

Data Path : Z:\voasrv\HPCHEM1\MSVOA\_X\Data\VX092722\  
 Data File : VX031695.D  
 Acq On : 27 Sep 2022 12:03  
 Operator : JC/MD  
 Sample : N4809-02  
 Misc : 5.0mL/MSVOA\_X/WATER  
 ALS Vial : 9 Sample Multiplier: 1

Instrument :  
 MSVOA\_X  
 ClientSampleId :  
 TP1-0923

Quant Time: Sep 28 06:29:39 2022  
 Quant Method : Z:\voasrv\HPCHEM1\MSVOA\_X\Method\82X092622W.M  
 Quant Title : SW846 8260  
 QLast Update : Tue Sep 27 01:44:18 2022  
 Response via : Initial Calibration

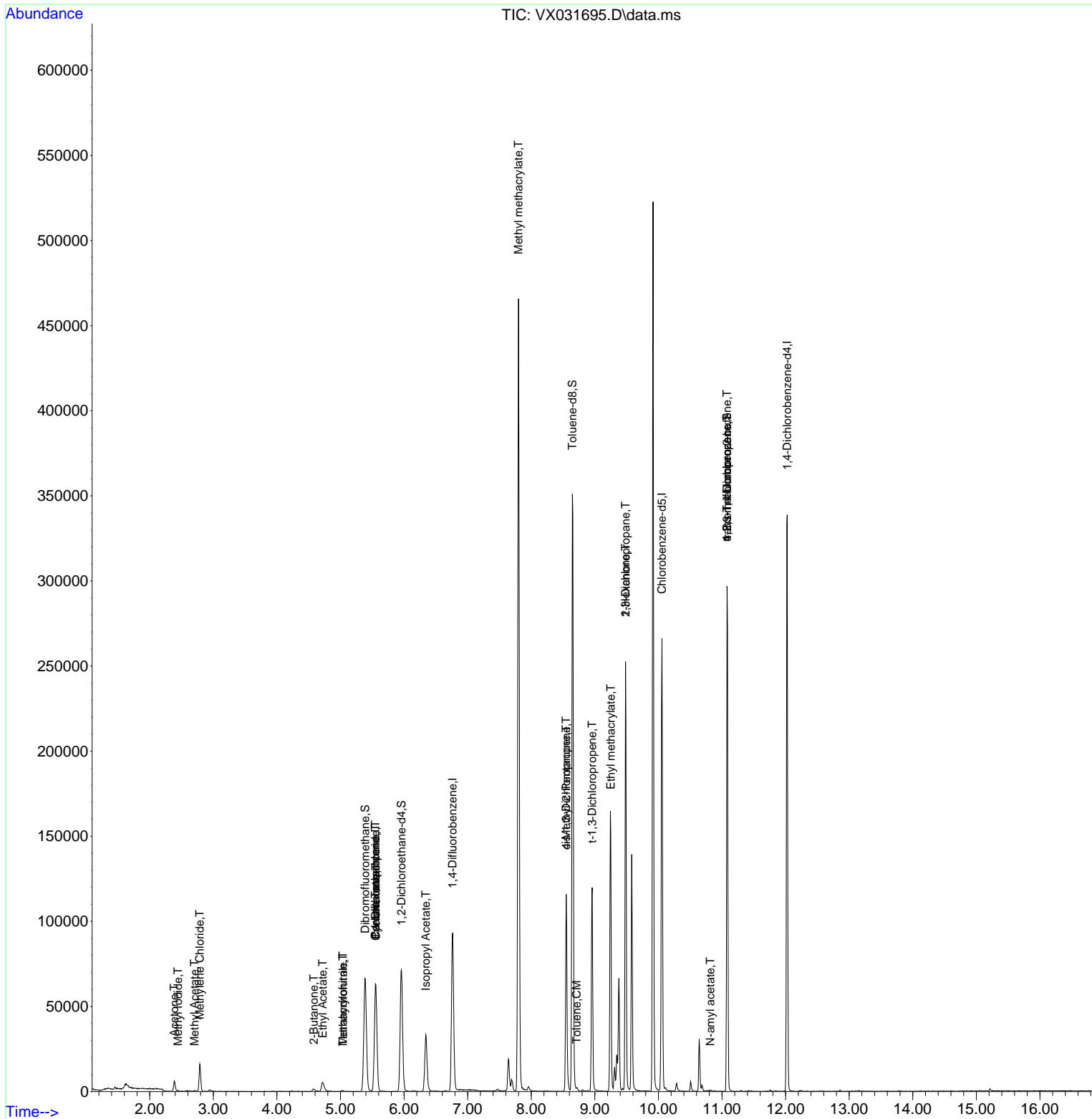
Compound	R.T.	QIon	Response	Conc	Units	Dev(Min)
-----						
Internal Standards						
1) Pentafluorobenzene	5.550	168	60665	50.000	ug/l	0.00
34) 1,4-Difluorobenzene	6.763	114	96597	50.000	ug/l	0.00
63) Chlorobenzene-d5	10.055	117	115962	50.000	ug/l	0.00
72) 1,4-Dichlorobenzene-d4	12.024	152	68943	50.000	ug/l	0.00
System Monitoring Compounds						
33) 1,2-Dichloroethane-d4	5.958	65	69012	53.599	ug/l	0.00
Spiked Amount	50.000	Range 74 - 125	Recovery	=	107.200%	
35) Dibromofluoromethane	5.385	113	55252	48.005	ug/l	0.00
Spiked Amount	50.000	Range 75 - 124	Recovery	=	96.000%	
50) Toluene-d8	8.647	98	211043	50.576	ug/l	0.00
Spiked Amount	50.000	Range 86 - 113	Recovery	=	101.160%	
62) 4-Bromofluorobenzene	11.079	95	74421	48.661	ug/l	0.00
Spiked Amount	50.000	Range 83 - 123	Recovery	=	97.320%	
Target Compounds						
						Qvalue
3) Chloromethane	1.301	50	42	Below Cal	#	41
5) Bromomethane	1.612	94	558	Below Cal	#	79
6) Chloroethane	1.660	64	120	Below Cal	#	43
10) Methyl Iodide	2.447	142	233	0.295	ug/l #	61
11) Tert butyl alcohol	2.947	59	889	Below Cal	#	73
12) 1,1-Dichloroethene	2.051	96	20	Below Cal	#	1
13) Acrolein	1.990	56	22	Below Cal	#	15
16) Acetone	2.386	43	7129	5.306	ug/l	99
17) Carbon Disulfide	2.502	76	145	Below Cal	#	75
18) Methyl Acetate	2.703	43	722	0.624	ug/l	92
20) Methylene Chloride	2.788	84	7074	7.241	ug/l	88
25) 2-Butanone	4.581	43	2385	3.881	ug/l	90
29) Tetrahydrofuran	5.038	42	486	1.259	ug/l #	53
31) Cyclohexane	5.556	56	1407	1.149	ug/l #	60
36) 1,1-Dichloropropene	5.550	75	4518	3.418	ug/l #	51
37) Ethyl Acetate	4.721	43	10062	7.547	ug/l	98
38) Carbon Tetrachloride	5.550	117	5977	4.012	ug/l #	17
41) Methacrylonitrile	5.038	41	170	0.251	ug/l #	34
43) Isopropyl Acetate	6.342	43	43355	20.661	ug/l	97
48) Methyl methacrylate	7.799	41	39754	43.077	ug/l #	46
51) 4-Methyl-2-Pentanone	8.549	43	38702	29.138	ug/l #	50
52) Toluene	8.714	92	562	0.208	ug/l	94
53) t-1,3-Dichloropropene	8.958	75	286	2.052	ug/l #	44
54) cis-1,3-Dichloropropene	8.549	75	18619	12.548	ug/l #	63
56) Ethyl methacrylate	9.250	69	474	0.318	ug/l #	1
57) 1,3-Dichloropropane	9.482	76	2214	1.200	ug/l #	43
59) 2-Hexanone	9.482	43	26207	26.445	ug/l #	56
74) N-amyl acetate	10.817	43	305	0.211	ug/l #	43
76) 1,2,3-Trichloropropane	11.079	75	40781	32.629	ug/l #	37
81) trans-1,4-Dichloro-2-b...	11.079	75	40781	107.279	ug/l #	11
-----						

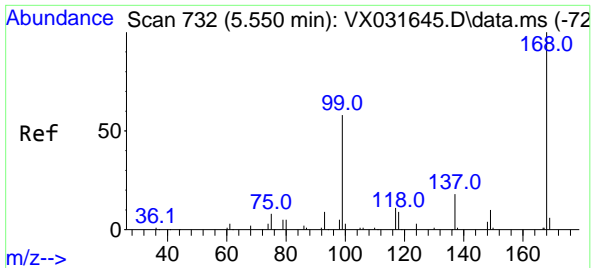
(#) = qualifier out of range (m) = manual integration (+) = signals summed

Data Path : Z:\voasrv\HPCHEM1\MSVOA\_X\Data\VX092722\  
 Data File : VX031695.D  
 Acq On : 27 Sep 2022 12:03  
 Operator : JC/MD  
 Sample : N4809-02  
 Misc : 5.0mL/MSVOA\_X/WATER  
 ALS Vial : 9 Sample Multiplier: 1

Instrument :  
 MSVOA\_X  
 ClientSampleId :  
 TP1-0923

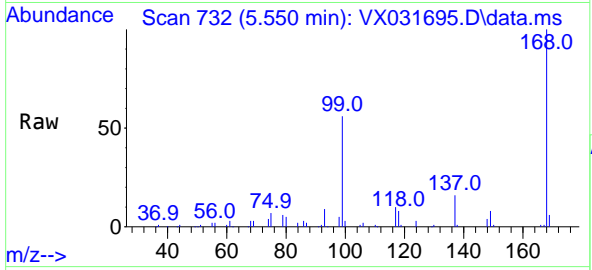
Quant Time: Sep 28 06:29:39 2022  
 Quant Method : Z:\voasrv\HPCHEM1\MSVOA\_X\Method\82X092622W.M  
 Quant Title : SW846 8260  
 QLast Update : Tue Sep 27 01:44:18 2022  
 Response via : Initial Calibration



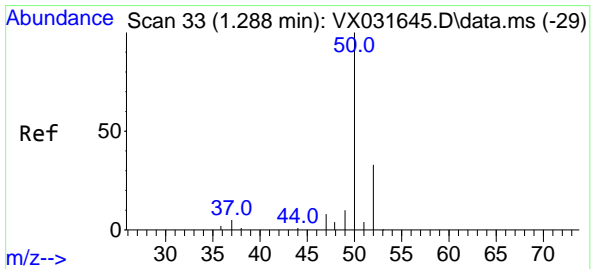
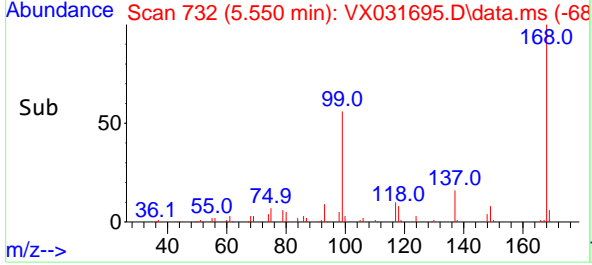
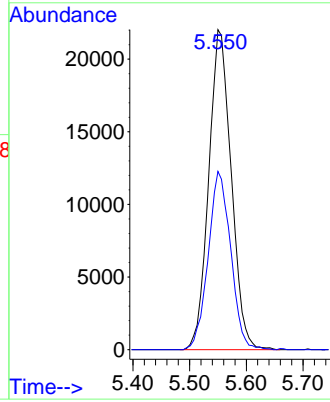


#1  
 Pentafluorobenzene  
 Concen: 50.000 ug/l  
 RT: 5.550 min Scan# 71  
 Delta R.T. -0.006 min  
 Lab File: VX031695.D  
 Acq: 27 Sep 2022 12:03

Instrument : MSVOA\_X  
 ClientSampleId : TP1-0923

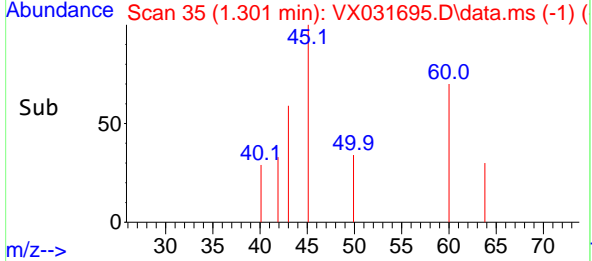
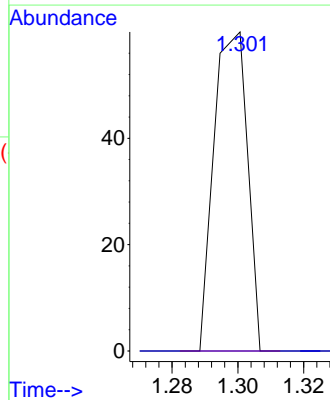
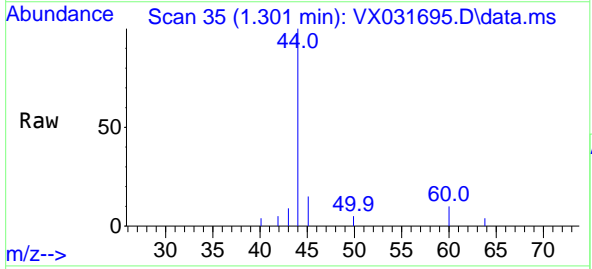


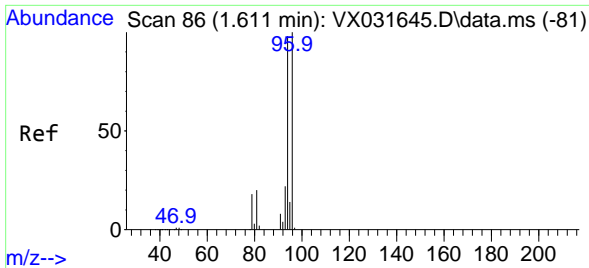
Tgt Ion:168 Resp: 60665  
 Ion Ratio Lower Upper  
 168 100  
 99 55.7 48.8 73.2



#3  
 Chloromethane  
 Concen: Below Cal  
 RT: 1.301 min Scan# 35  
 Delta R.T. 0.013 min  
 Lab File: VX031695.D  
 Acq: 27 Sep 2022 12:03

Tgt Ion: 50 Resp: 42  
 Ion Ratio Lower Upper  
 50 100  
 52 0.0 26.9 40.3#

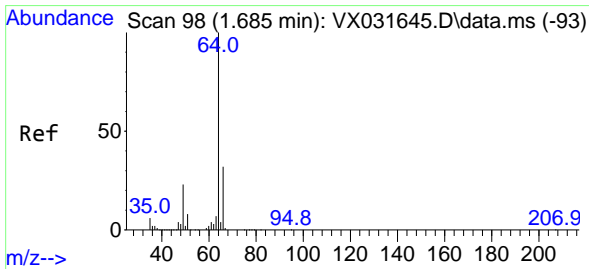
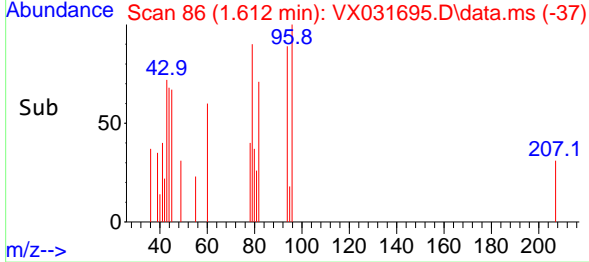
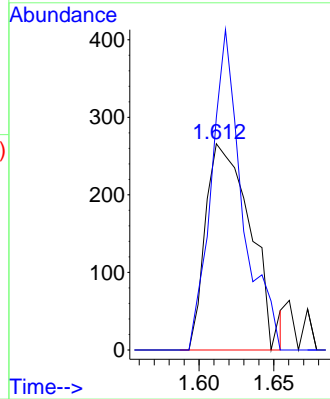
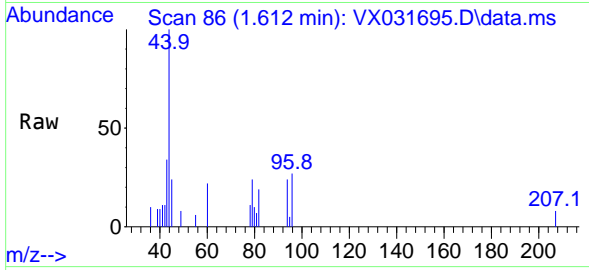




#5  
 Bromomethane  
 Concen: Below Cal  
 RT: 1.612 min Scan# 80  
 Delta R.T. 0.001 min  
 Lab File: VX031695.D  
 Acq: 27 Sep 2022 12:03

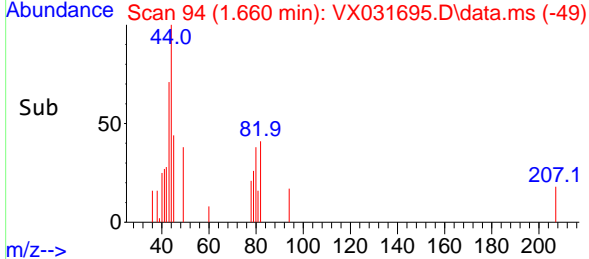
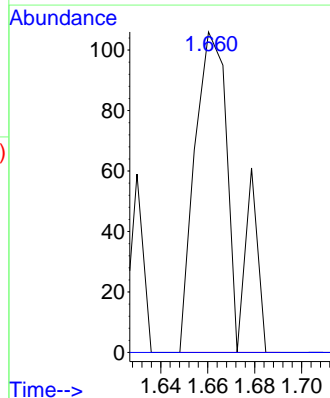
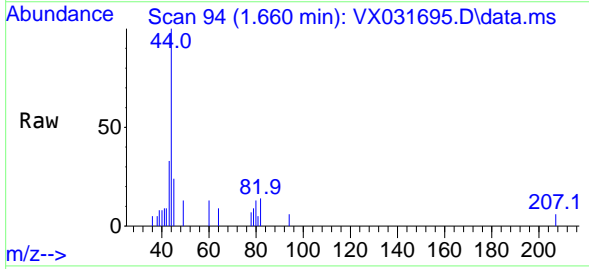
Instrument : MSVOA\_X  
 ClientSampleId : TP1-0923

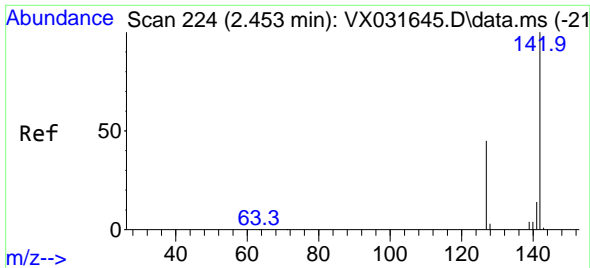
Tgt Ion: 94 Resp: 558  
 Ion Ratio Lower Upper  
 94 100  
 96 112.8 74.4 111.6#



#6  
 Chloroethane  
 Concen: Below Cal  
 RT: 1.660 min Scan# 94  
 Delta R.T. -0.025 min  
 Lab File: VX031695.D  
 Acq: 27 Sep 2022 12:03

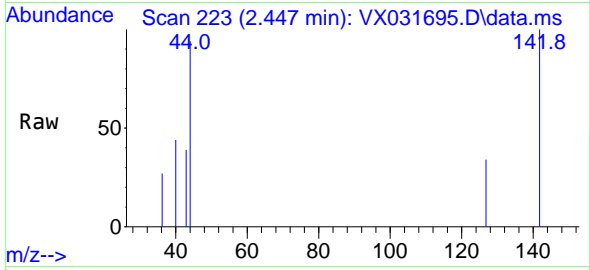
Tgt Ion: 64 Resp: 120  
 Ion Ratio Lower Upper  
 64 100  
 66 0.0 25.0 37.4#



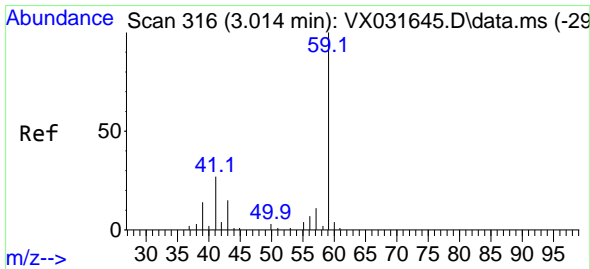
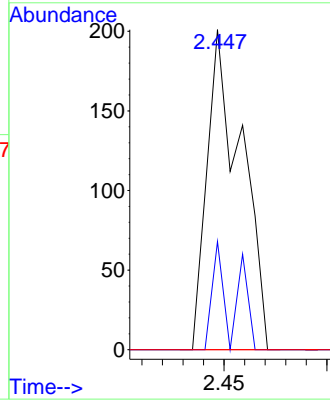
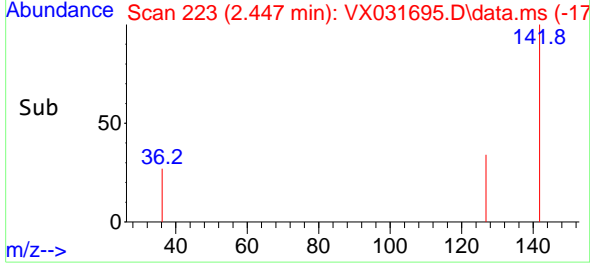


#10  
Methyl Iodide  
Concen: 0.295 ug/l  
RT: 2.447 min Scan# 21  
Delta R.T. -0.006 min  
Lab File: VX031695.D  
Acq: 27 Sep 2022 12:03

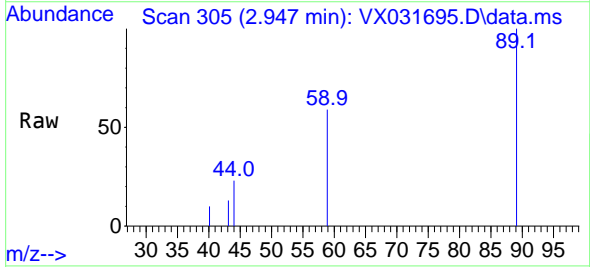
Instrument : MSVOA\_X  
ClientSampleId : TP1-0923



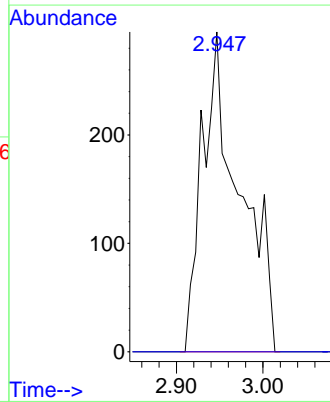
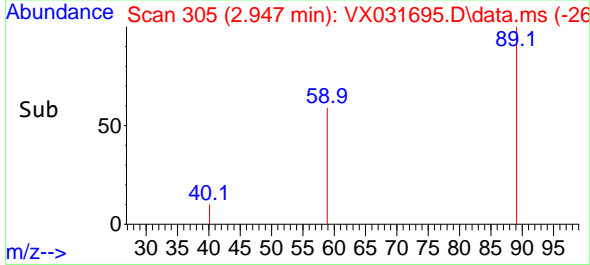
Tgt Ion:142 Resp: 233  
Ion Ratio Lower Upper  
142 100  
127 20.2 37.4 56.0#  
141 0.0 11.6 17.4#

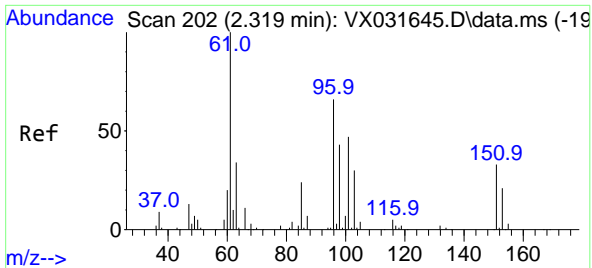


#11  
Tert butyl alcohol  
Concen: Below Cal  
RT: 2.947 min Scan# 305  
Delta R.T. -0.042 min  
Lab File: VX031695.D  
Acq: 27 Sep 2022 12:03



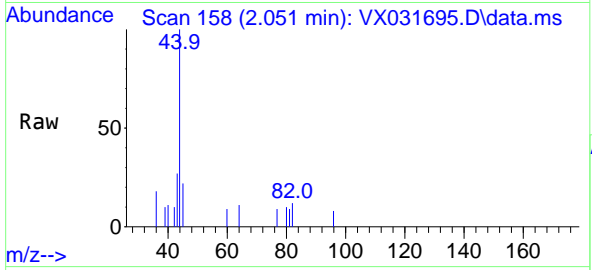
Tgt Ion: 59 Resp: 889  
Ion Ratio Lower Upper  
59 100  
57 0.0 8.2 12.2#



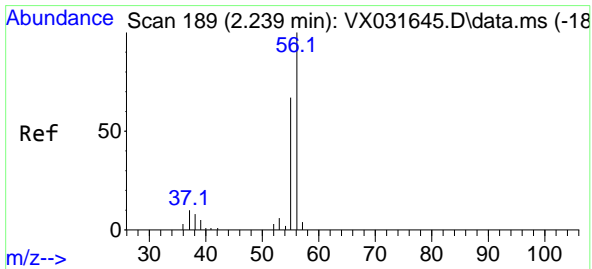
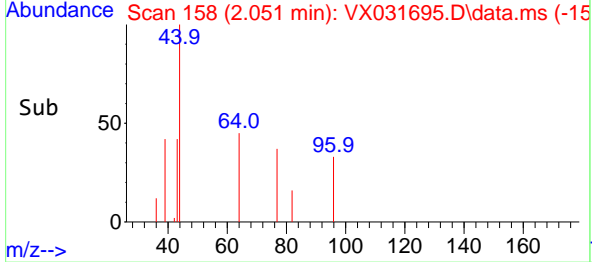
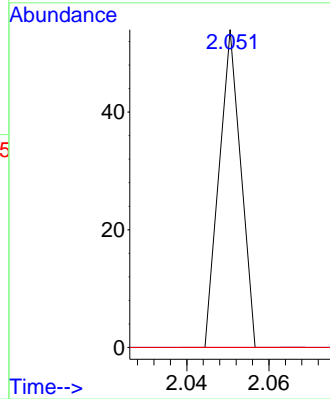


#12  
 1,1-Dichloroethene  
 Concen: Below Cal  
 RT: 2.051 min Scan# 11  
 Delta R.T. -0.268 min  
 Lab File: VX031695.D  
 Acq: 27 Sep 2022 12:03

Instrument : MSVOA\_X  
 ClientSampleId : TP1-0923

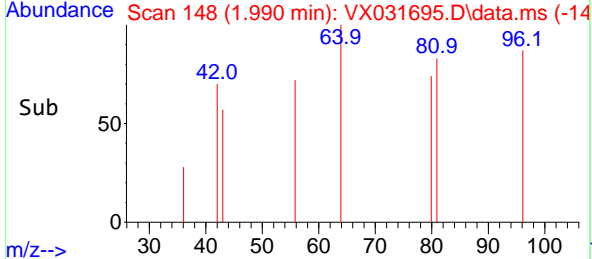
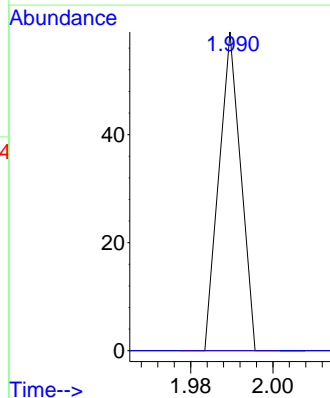
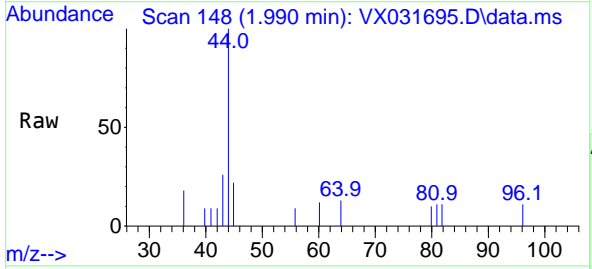


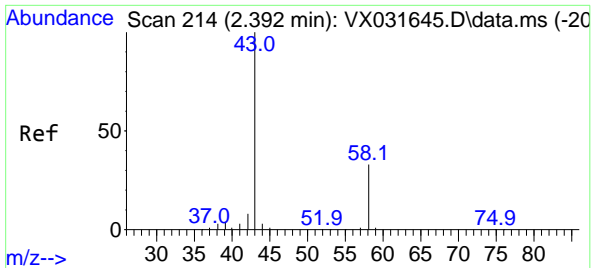
Tgt Ion: 96 Resp: 20  
 Ion Ratio Lower Upper  
 96 100  
 61 0.0 135.3 202.9#  
 98 0.0 49.4 74.2#



#13  
 Acrolein  
 Concen: Below Cal  
 RT: 1.990 min Scan# 148  
 Delta R.T. -0.249 min  
 Lab File: VX031695.D  
 Acq: 27 Sep 2022 12:03

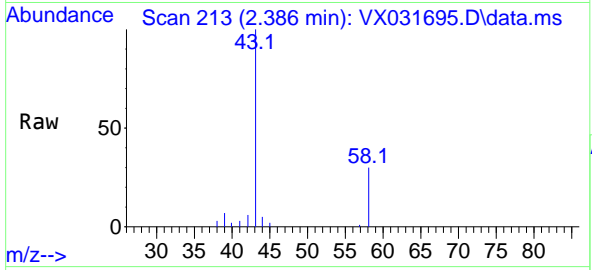
Tgt Ion: 56 Resp: 22  
 Ion Ratio Lower Upper  
 56 100  
 55 0.0 56.0 84.0#



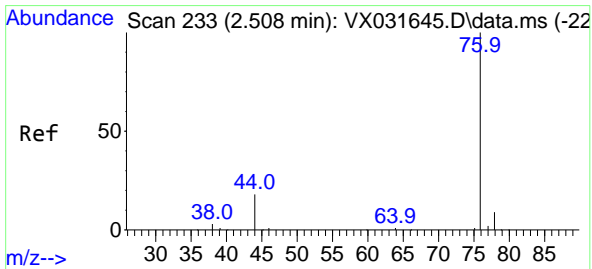
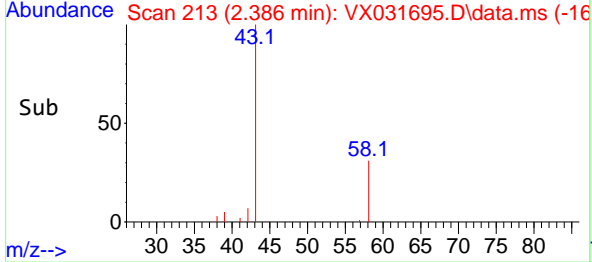
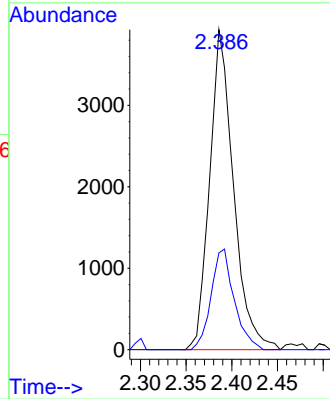


#16  
 Acetone  
 Concen: 5.306 ug/l  
 RT: 2.386 min Scan# 214  
 Delta R.T. -0.000 min  
 Lab File: VX031695.D  
 Acq: 27 Sep 2022 12:03

Instrument : MSVOA\_X  
 ClientSampleId : TP1-0923

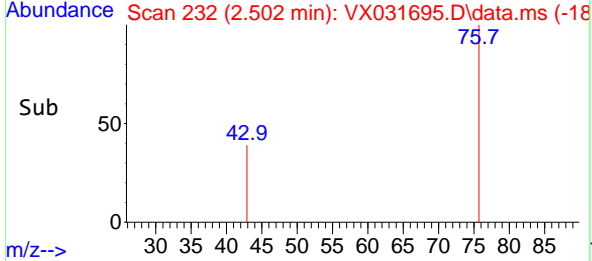
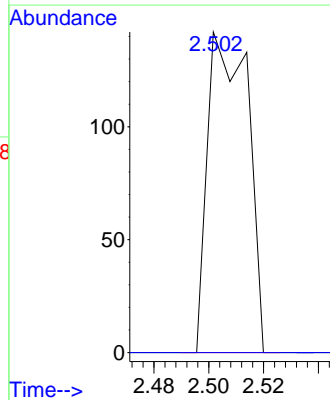
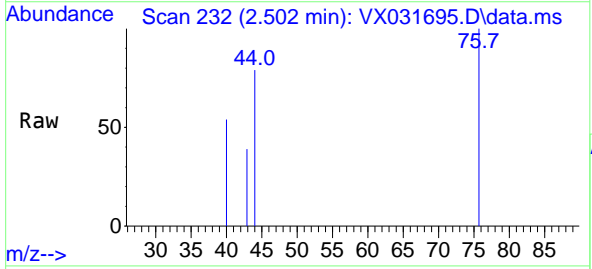


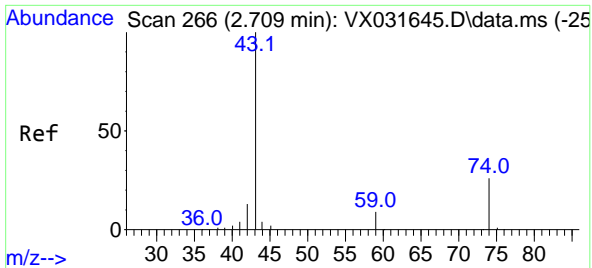
Tgt Ion: 43 Resp: 7129  
 Ion Ratio Lower Upper  
 43 100  
 58 30.2 23.8 35.8



#17  
 Carbon Disulfide  
 Concen: Below Cal  
 RT: 2.502 min Scan# 232  
 Delta R.T. -0.012 min  
 Lab File: VX031695.D  
 Acq: 27 Sep 2022 12:03

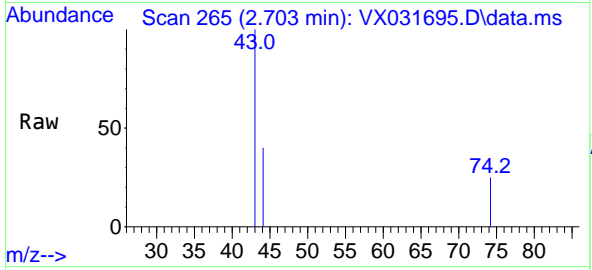
Tgt Ion: 76 Resp: 145  
 Ion Ratio Lower Upper  
 76 100  
 78 0.0 7.2 10.8#



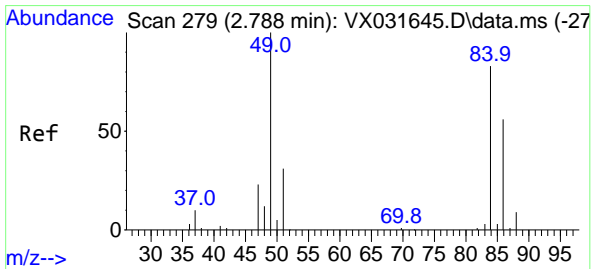
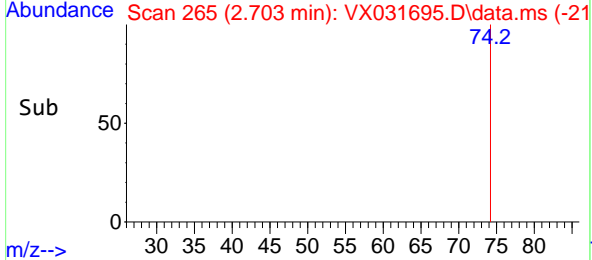
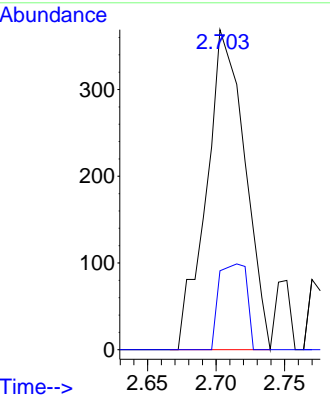


#18  
 Methyl Acetate  
 Concen: 0.624 ug/l  
 RT: 2.703 min Scan# 20  
 Delta R.T. -0.006 min  
 Lab File: VX031695.D  
 Acq: 27 Sep 2022 12:03

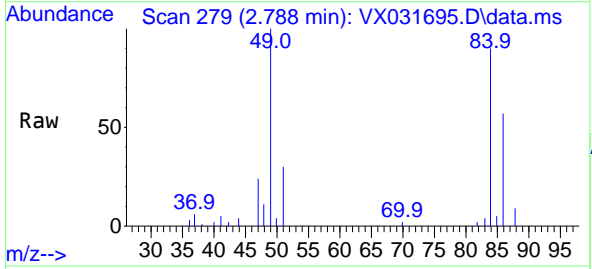
Instrument : MSVOA\_X  
 ClientSampleId : TP1-0923



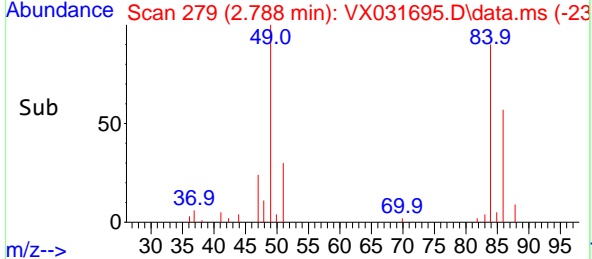
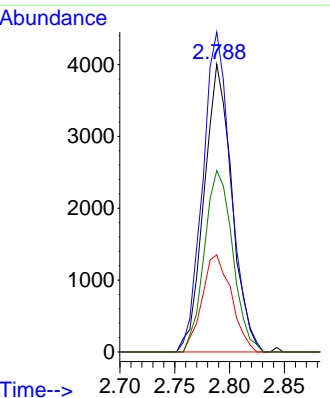
Tgt Ion: 43 Resp: 722  
 Ion Ratio Lower Upper  
 43 100  
 74 19.3 18.6 27.8



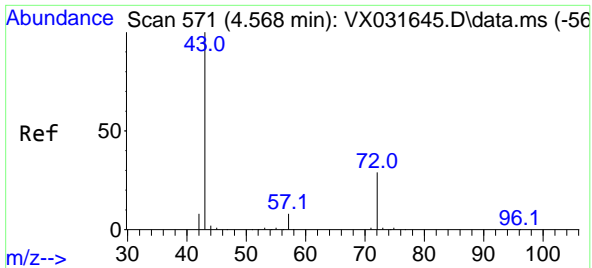
#20  
 Methylene Chloride  
 Concen: 7.241 ug/l  
 RT: 2.788 min Scan# 279  
 Delta R.T. 0.000 min  
 Lab File: VX031695.D  
 Acq: 27 Sep 2022 12:03



Tgt Ion: 84 Resp: 7074  
 Ion Ratio Lower Upper  
 84 100  
 49 111.2 105.9 158.9  
 51 33.7 32.2 48.2  
 86 63.0 50.8 76.2

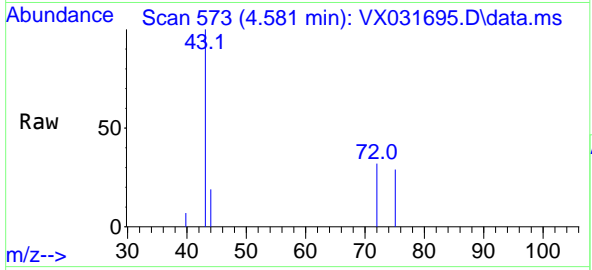




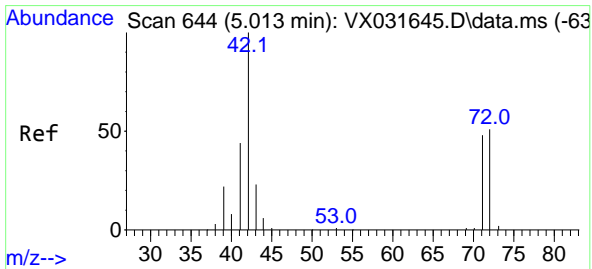
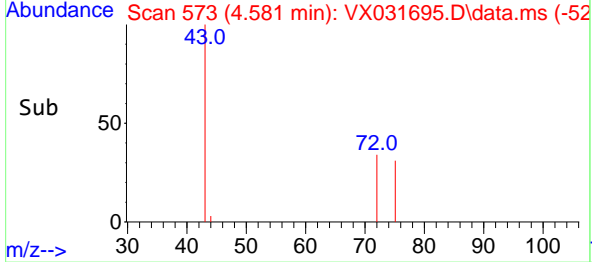
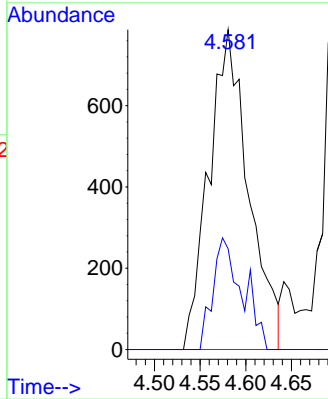


#25  
 2-Butanone  
 Concen: 3.881 ug/l  
 RT: 4.581 min Scan# 51  
 Delta R.T. 0.019 min  
 Lab File: VX031695.D  
 Acq: 27 Sep 2022 12:03

Instrument : MSVOA\_X  
 ClientSampleId : TP1-0923

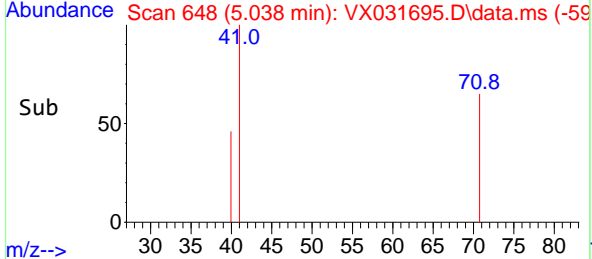
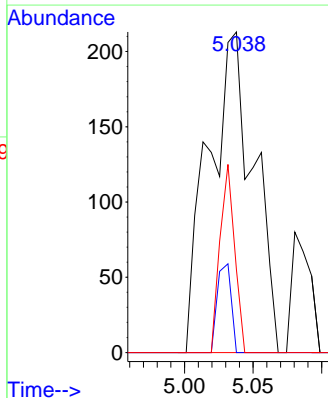
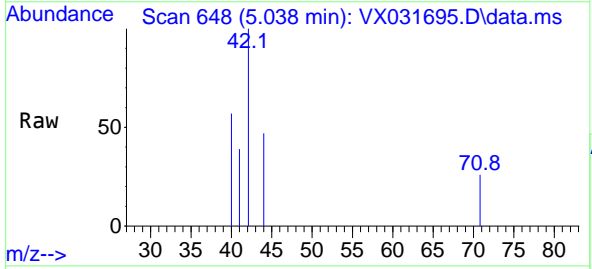


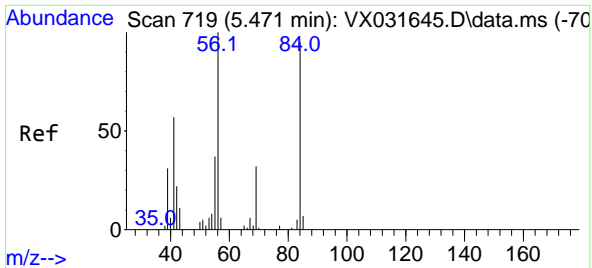
Tgt Ion: 43 Resp: 2385  
 Ion Ratio Lower Upper  
 43 100  
 72 31.5 21.1 31.7



#29  
 Tetrahydrofuran  
 Concen: 1.259 ug/l  
 RT: 5.038 min Scan# 648  
 Delta R.T. 0.025 min  
 Lab File: VX031695.D  
 Acq: 27 Sep 2022 12:03

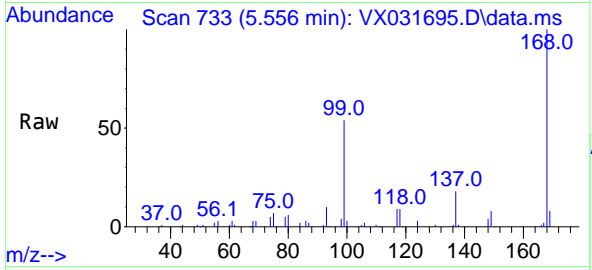
Tgt Ion: 42 Resp: 486  
 Ion Ratio Lower Upper  
 42 100  
 72 8.4 36.4 54.6#  
 71 19.1 33.5 50.3#



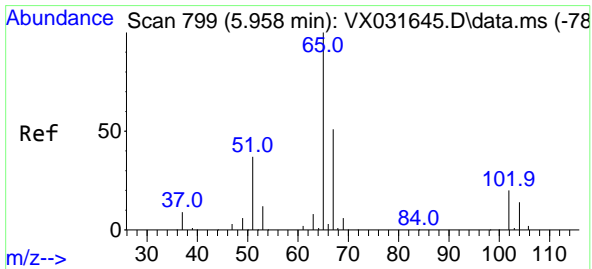
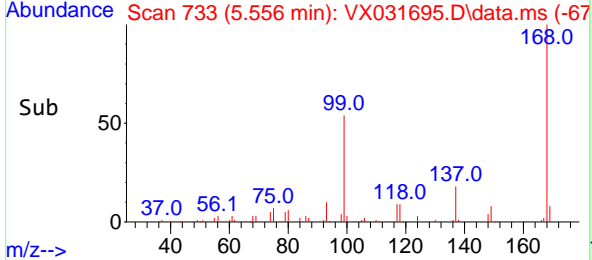
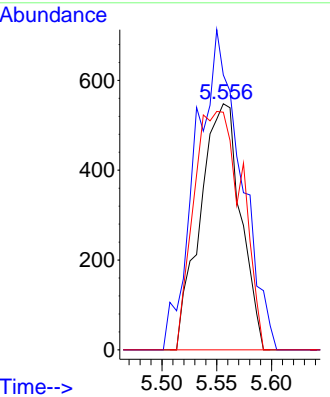


#31  
 Cyclohexane  
 Concen: 1.149 ug/l  
 RT: 5.556 min Scan# 719  
 Delta R.T. 0.085 min  
 Lab File: VX031695.D  
 Acq: 27 Sep 2022 12:03

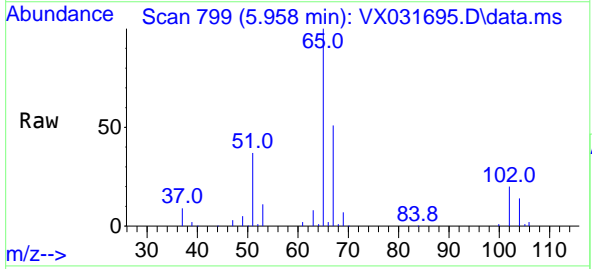
Instrument : MSVOA\_X  
 ClientSampleId : TP1-0923



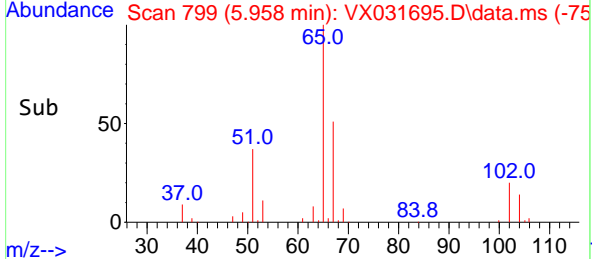
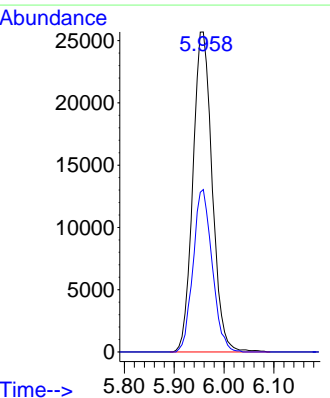
Tgt Ion: 56 Resp: 1407  
 Ion Ratio Lower Upper  
 56 100  
 69 101.8 25.1 37.7#  
 84 96.5 70.2 105.4

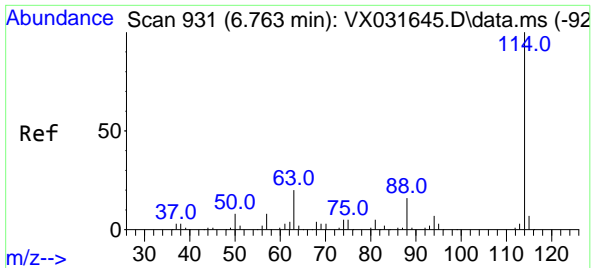


#33  
 1,2-Dichloroethane-d4  
 Concen: 53.599 ug/l  
 RT: 5.958 min Scan# 799  
 Delta R.T. 0.000 min  
 Lab File: VX031695.D  
 Acq: 27 Sep 2022 12:03



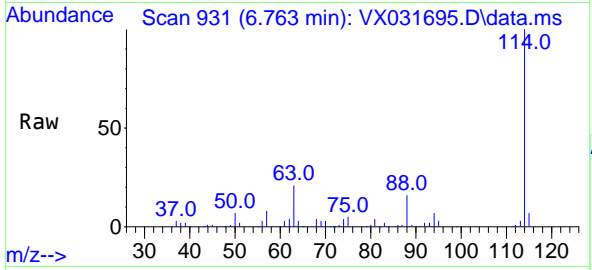
Tgt Ion: 65 Resp: 69012  
 Ion Ratio Lower Upper  
 65 100  
 67 50.3 0.0 102.4





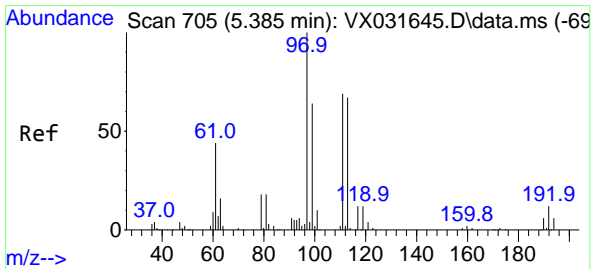
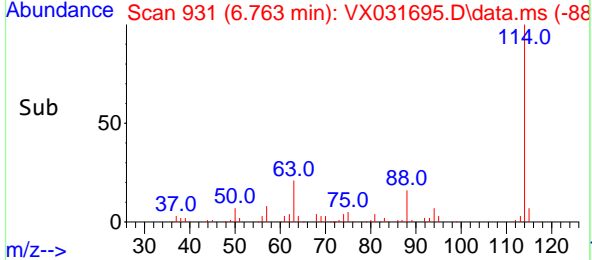
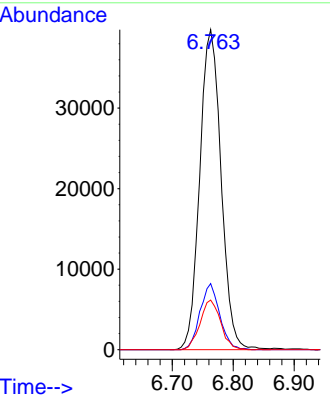
#34  
 1,4-Difluorobenzene  
 Concen: 50.000 ug/l  
 RT: 6.763 min Scan# 911  
 Delta R.T. 0.000 min  
 Lab File: VX031695.D  
 Acq: 27 Sep 2022 12:03

Instrument : MSVOA\_X  
 ClientSampleId : TP1-0923

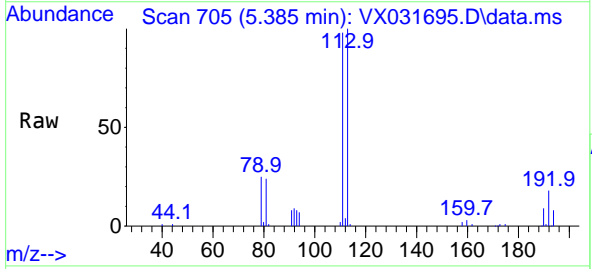


Tgt Ion:114 Resp: 96597

Ion	Ratio	Lower	Upper
114	100		
63	20.6	0.0	42.6
88	15.5	0.0	33.0

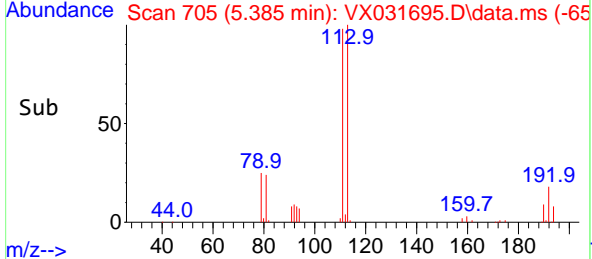
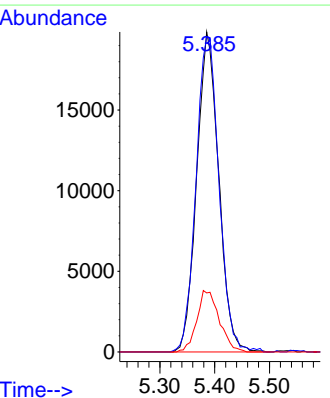


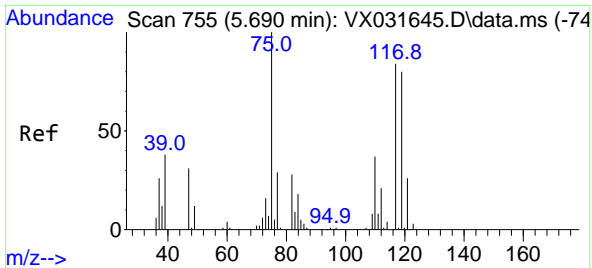
#35  
 Dibromofluoromethane  
 Concen: 48.005 ug/l  
 RT: 5.385 min Scan# 705  
 Delta R.T. -0.006 min  
 Lab File: VX031695.D  
 Acq: 27 Sep 2022 12:03



Tgt Ion:113 Resp: 55252

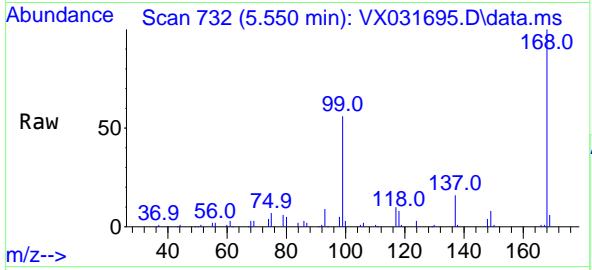
Ion	Ratio	Lower	Upper
113	100		
111	103.0	82.4	123.6
192	19.5	14.1	21.1





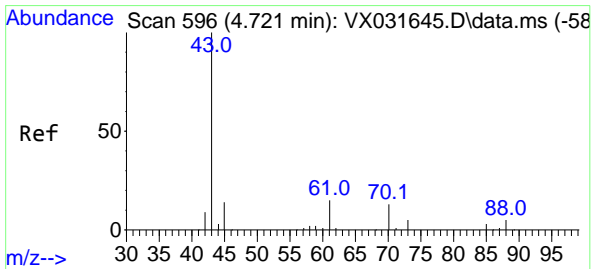
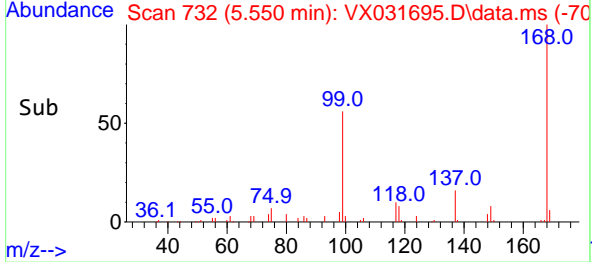
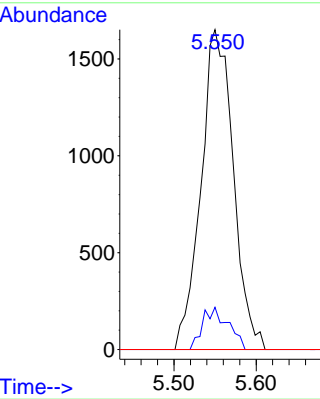
#36  
 1,1-Dichloropropene  
 Concen: 3.418 ug/l  
 RT: 5.550 min Scan# 71  
 Delta R.T. -0.140 min  
 Lab File: VX031695.D  
 Acq: 27 Sep 2022 12:03

Instrument : MSVOA\_X  
 ClientSampleId : TP1-0923

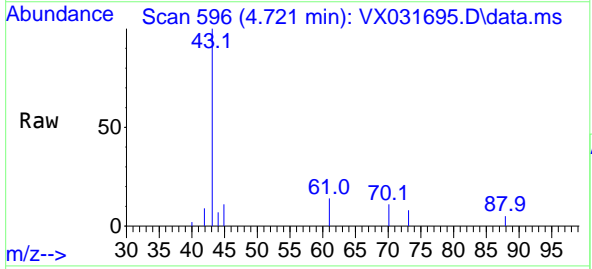


Tgt Ion: 75 Resp: 4518

Ion	Ratio	Lower	Upper
75	100		
110	10.4	17.5	52.5#
77	0.0	24.9	37.3#

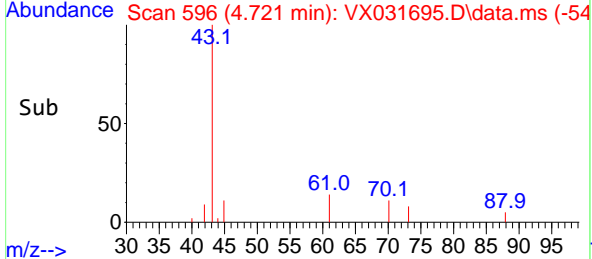
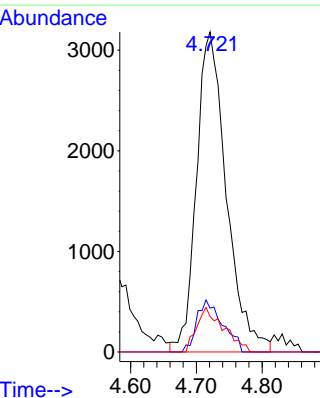


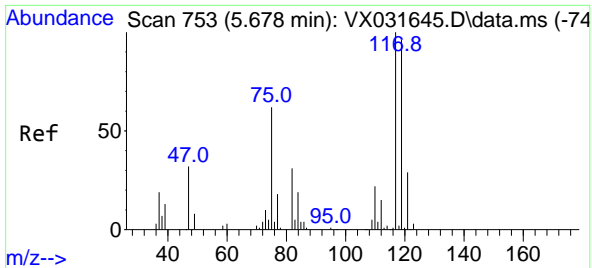
#37  
 Ethyl Acetate  
 Concen: 7.547 ug/l  
 RT: 4.721 min Scan# 596  
 Delta R.T. -0.000 min  
 Lab File: VX031695.D  
 Acq: 27 Sep 2022 12:03



Tgt Ion: 43 Resp: 10062

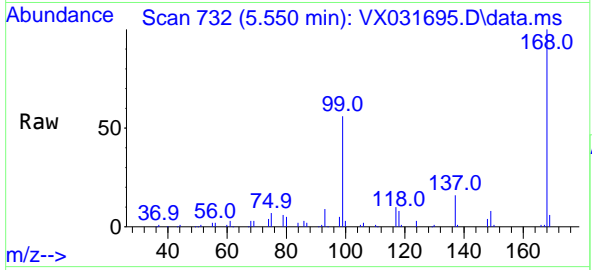
Ion	Ratio	Lower	Upper
43	100		
61	14.1	11.1	16.7
70	12.5	8.6	13.0





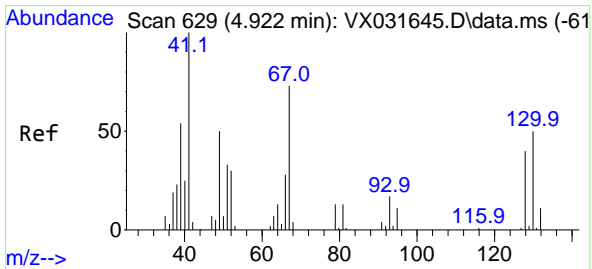
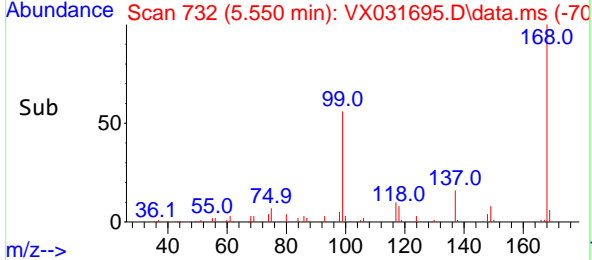
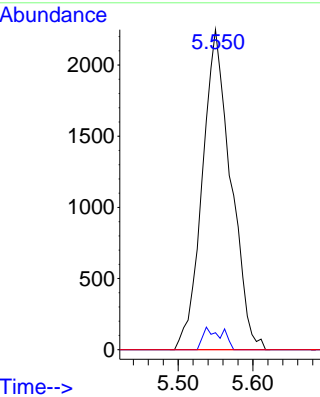
#38  
 Carbon Tetrachloride  
 Concen: 4.012 ug/l  
 RT: 5.550 min Scan# 71  
 Delta R.T. -0.128 min  
 Lab File: VX031695.D  
 Acq: 27 Sep 2022 12:03

Instrument : MSVOA\_X  
 Client SampleId : TP1-0923

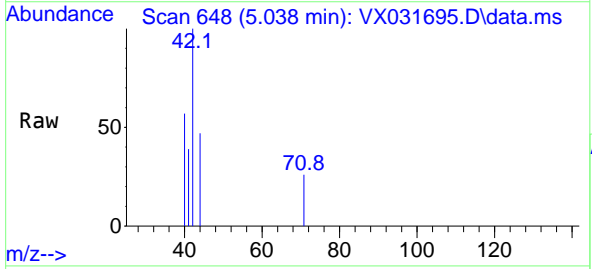


Tgt Ion: 117 Resp: 5977

Ion	Ratio	Lower	Upper
117	100		
119	5.3	74.6	112.0#
121	0.0	25.3	37.9#

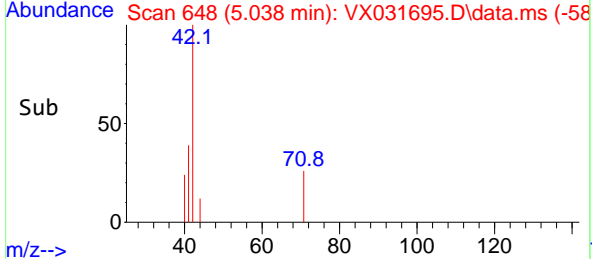
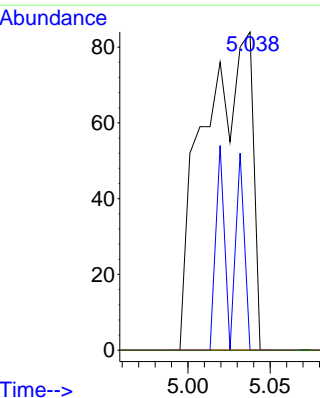


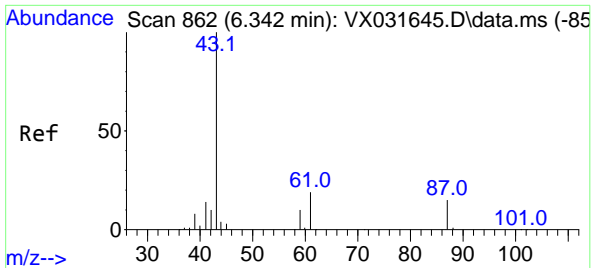
#41  
 Methacrylonitrile  
 Concen: 0.251 ug/l  
 RT: 5.038 min Scan# 648  
 Delta R.T. 0.110 min  
 Lab File: VX031695.D  
 Acq: 27 Sep 2022 12:03



Tgt Ion: 41 Resp: 170

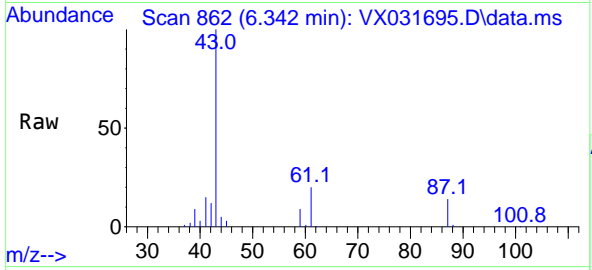
Ion	Ratio	Lower	Upper
41	100		
39	22.9	45.0	67.6#
67	0.0	58.2	87.4#
52	0.0	25.0	37.6#



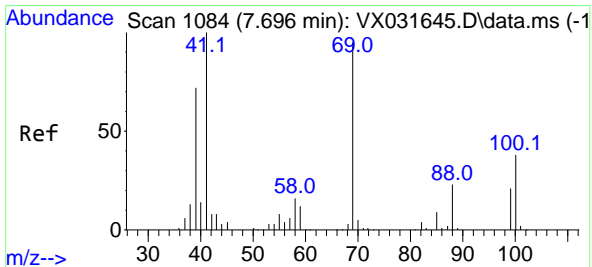
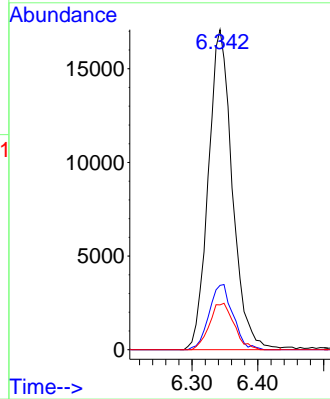
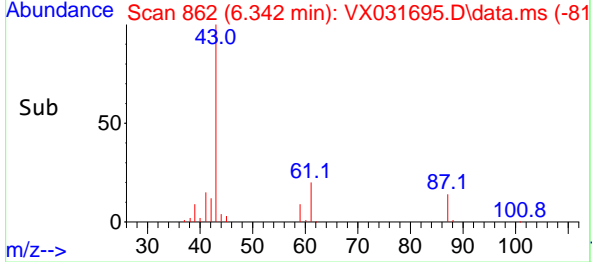


#43  
 Isopropyl Acetate  
 Concen: 20.661 ug/l  
 RT: 6.342 min Scan# 80  
 Delta R.T. 0.000 min  
 Lab File: VX031695.D  
 Acq: 27 Sep 2022 12:03

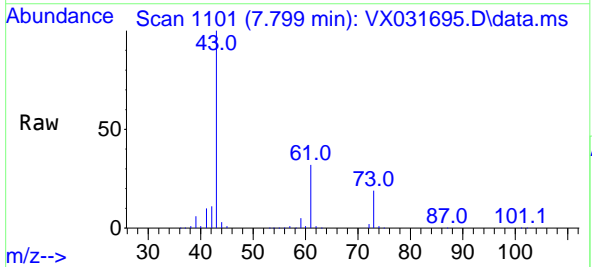
Instrument : MSVOA\_X  
 ClientSampleId : TP1-0923



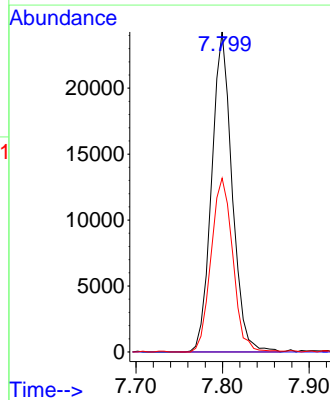
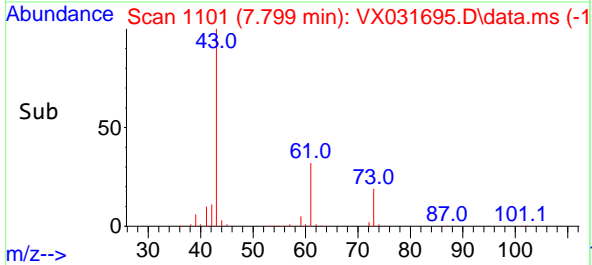
Tgt Ion: 43 Resp: 43355  
 Ion Ratio Lower Upper  
 43 100  
 61 20.2 15.3 22.9  
 87 14.9 10.6 15.8

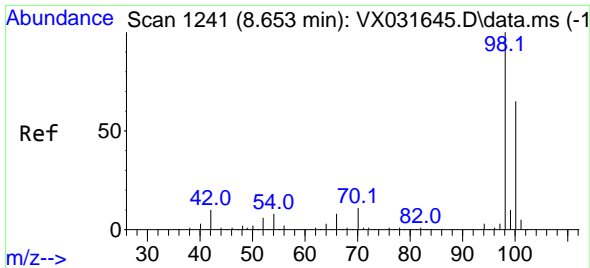


#48  
 Methyl methacrylate  
 Concen: 43.077 ug/l  
 RT: 7.799 min Scan# 1101  
 Delta R.T. 0.103 min  
 Lab File: VX031695.D  
 Acq: 27 Sep 2022 12:03



Tgt Ion: 41 Resp: 39754  
 Ion Ratio Lower Upper  
 41 100  
 69 0.0 64.6 96.8#  
 39 57.7 51.4 77.0

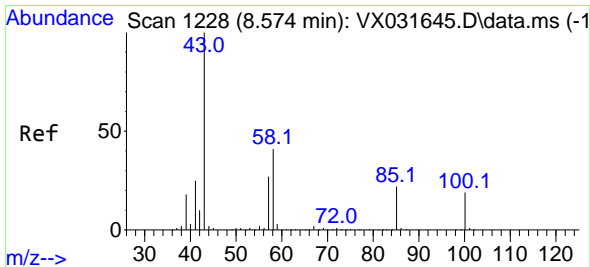
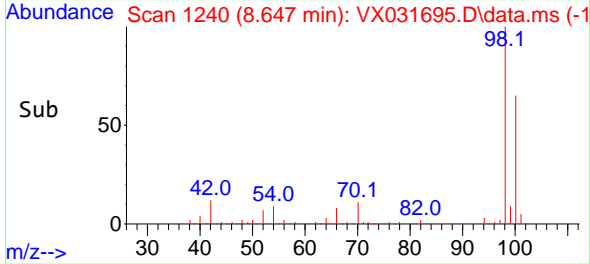
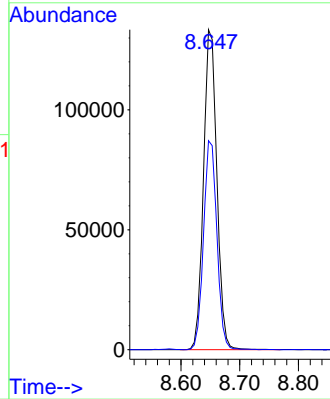
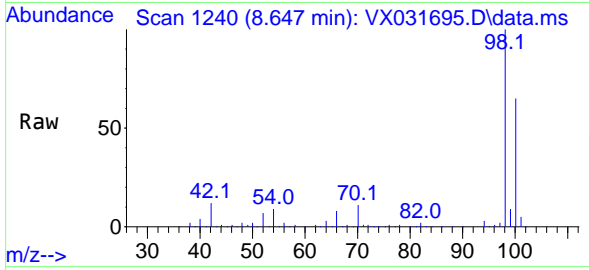




#50  
 Toluene-d8  
 Concen: 50.576 ug/l  
 RT: 8.647 min Scan# 1111  
 Delta R.T. -0.006 min  
 Lab File: VX031695.D  
 Acq: 27 Sep 2022 12:03

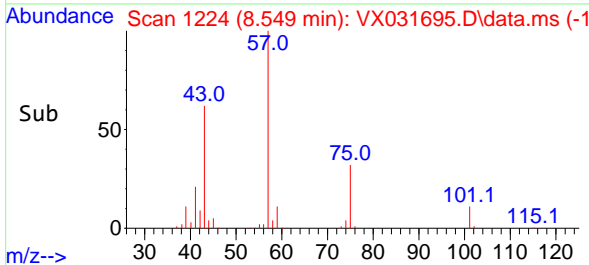
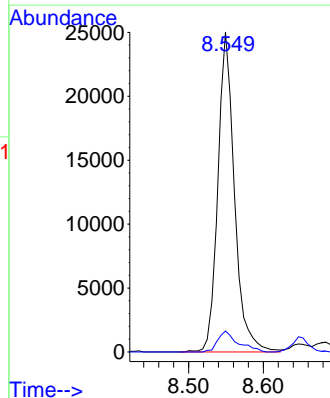
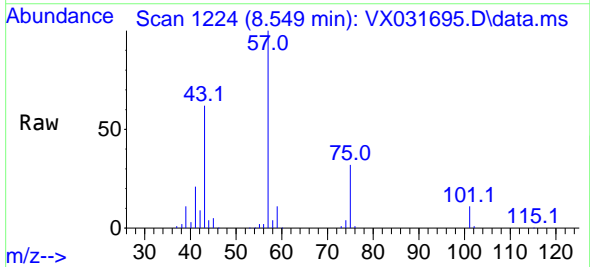
Instrument : MSVOA\_X  
 ClientSampleId : TP1-0923

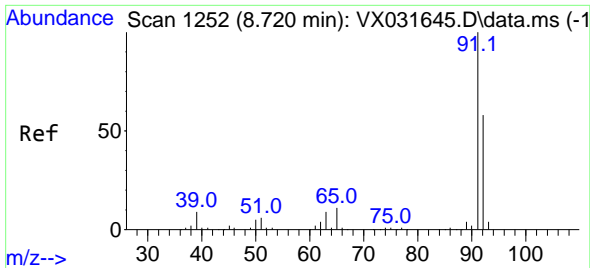
Tgt Ion: 98 Resp: 211043  
 Ion Ratio Lower Upper  
 98 100  
 100 65.4 52.5 78.7



#51  
 4-Methyl-2-Pentanone  
 Concen: 29.138 ug/l  
 RT: 8.549 min Scan# 1224  
 Delta R.T. -0.031 min  
 Lab File: VX031695.D  
 Acq: 27 Sep 2022 12:03

Tgt Ion: 43 Resp: 38702  
 Ion Ratio Lower Upper  
 43 100  
 58 7.9 30.6 46.0#

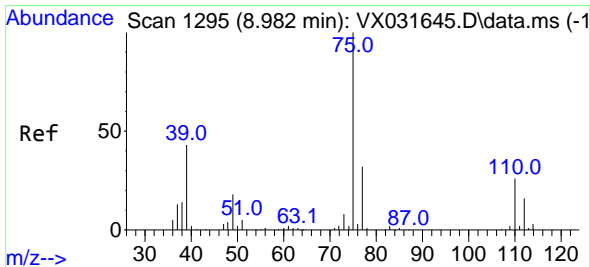
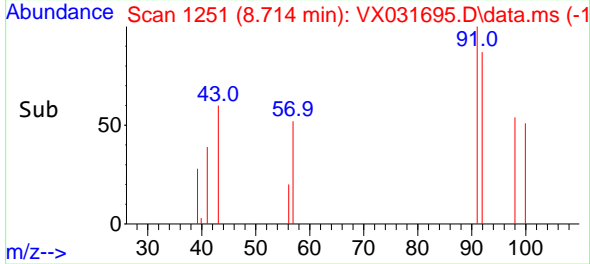
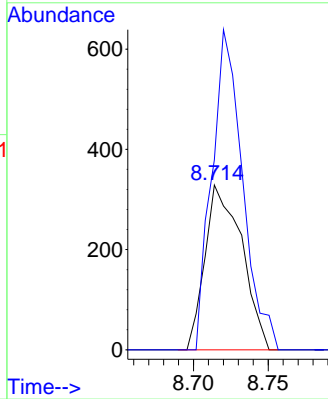
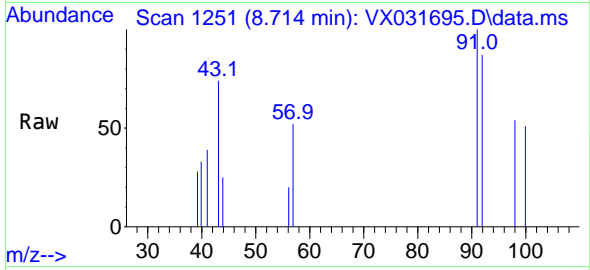




#52  
 Toluene  
 Concen: 0.208 ug/l  
 RT: 8.714 min Scan# 1251  
 Delta R.T. -0.006 min  
 Lab File: VX031695.D  
 Acq: 27 Sep 2022 12:03

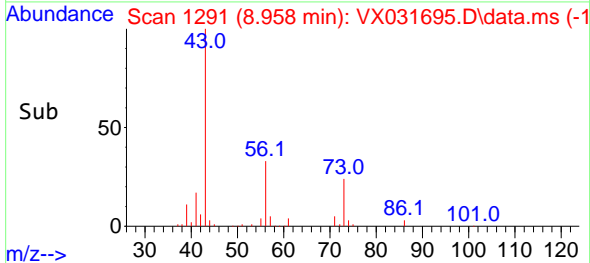
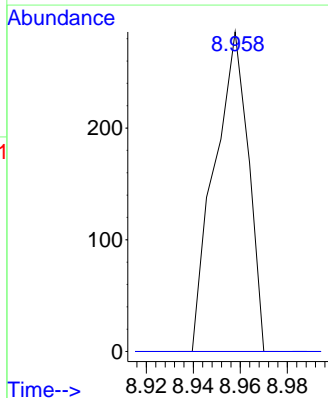
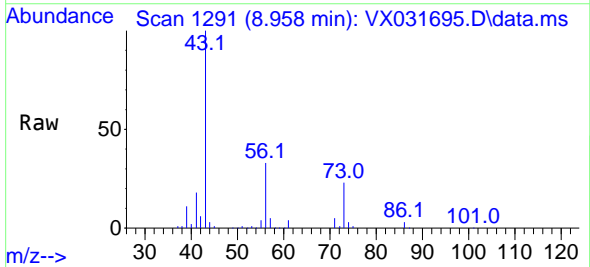
Instrument : MSVOA\_X  
 ClientSampleId : TP1-0923

Tgt Ion: 92 Resp: 562  
 Ion Ratio Lower Upper  
 92 100  
 91 162.5 137.1 205.7

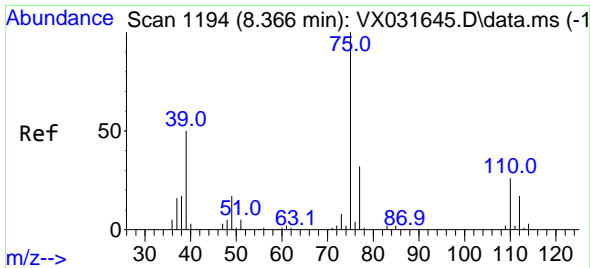


#53  
 t-1,3-Dichloropropene  
 Concen: 2.052 ug/l  
 RT: 8.958 min Scan# 1291  
 Delta R.T. -0.024 min  
 Lab File: VX031695.D  
 Acq: 27 Sep 2022 12:03

Tgt Ion: 75 Resp: 286  
 Ion Ratio Lower Upper  
 75 100  
 77 0.0 24.8 37.2#



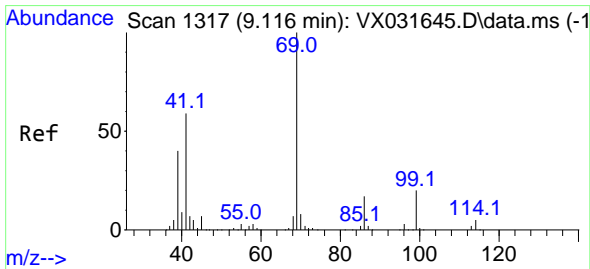
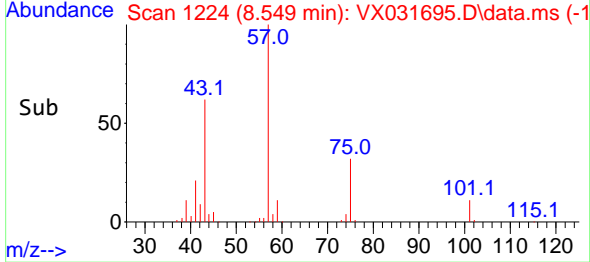
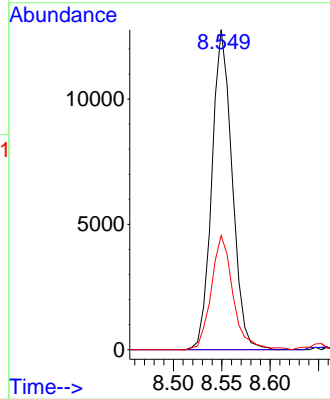
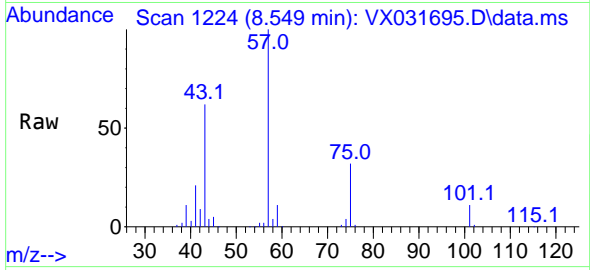




#54  
 cis-1,3-Dichloropropene  
 Concen: 12.548 ug/l  
 RT: 8.549 min Scan# 1194  
 Delta R.T. 0.183 min  
 Lab File: VX031695.D  
 Acq: 27 Sep 2022 12:03

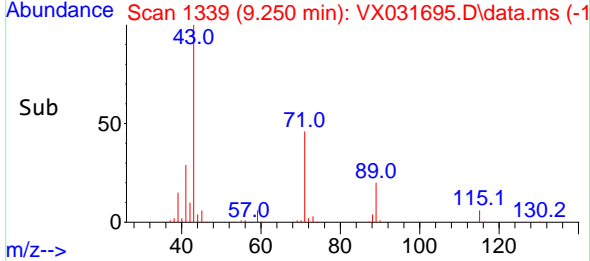
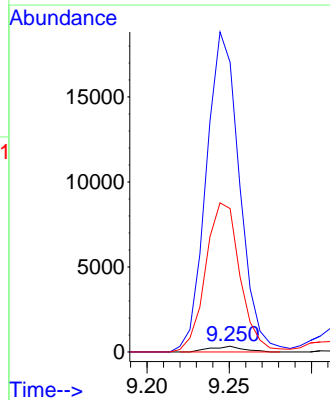
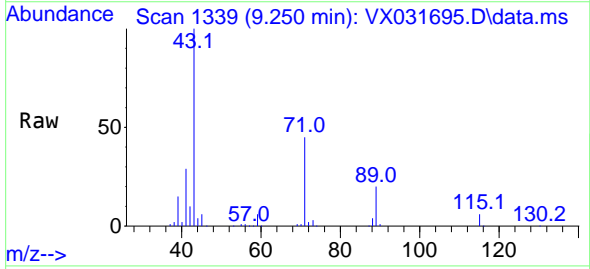
Instrument : MSVOA\_X  
 ClientSampleId : TP1-0923

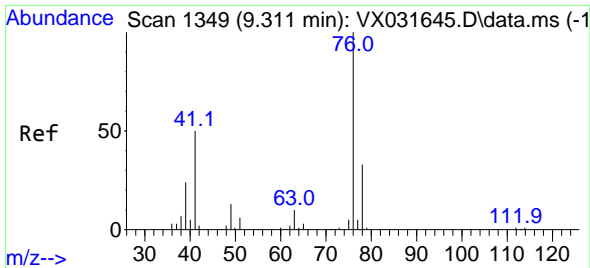
Tgt Ion: 75 Resp: 18619  
 Ion Ratio Lower Upper  
 75 100  
 77 0.0 24.4 36.6#  
 39 35.6 43.7 65.5#



#56  
 Ethyl methacrylate  
 Concen: 0.318 ug/l  
 RT: 9.250 min Scan# 1339  
 Delta R.T. 0.134 min  
 Lab File: VX031695.D  
 Acq: 27 Sep 2022 12:03

Tgt Ion: 69 Resp: 474  
 Ion Ratio Lower Upper  
 69 100  
 41 5594.5 54.2 81.4#  
 39 2703.4 34.2 51.2#

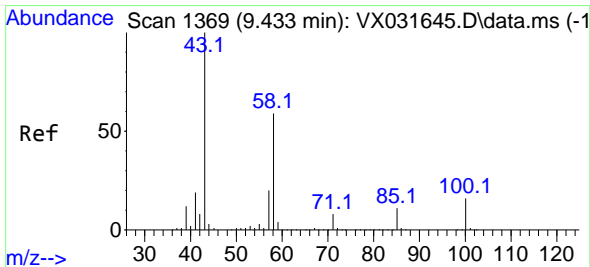
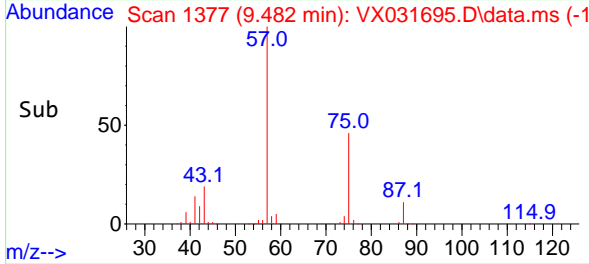
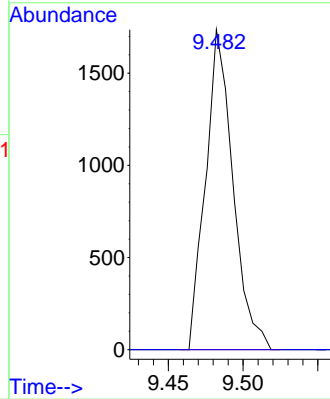
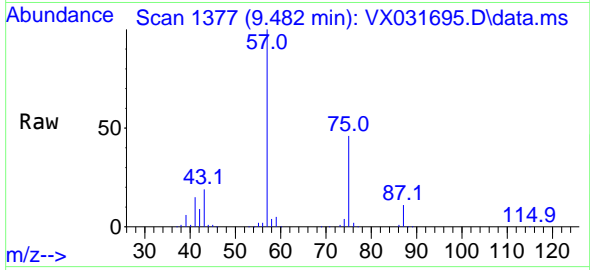




#57  
 1,3-Dichloropropane  
 Concen: 1.200 ug/l  
 RT: 9.482 min Scan# 1377  
 Delta R.T. 0.171 min  
 Lab File: VX031695.D  
 Acq: 27 Sep 2022 12:03

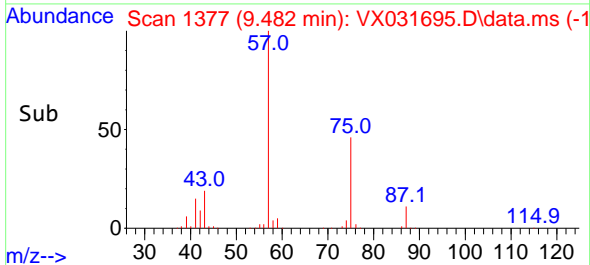
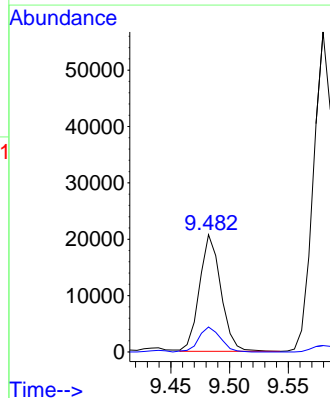
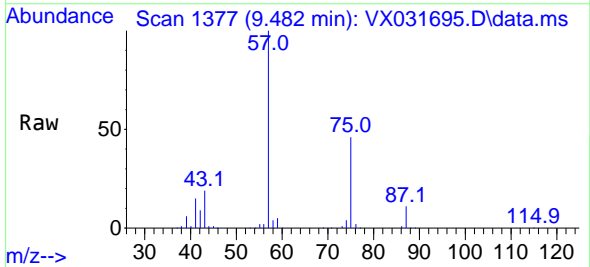
Instrument : MSVOA\_X  
 ClientSampleId : TP1-0923

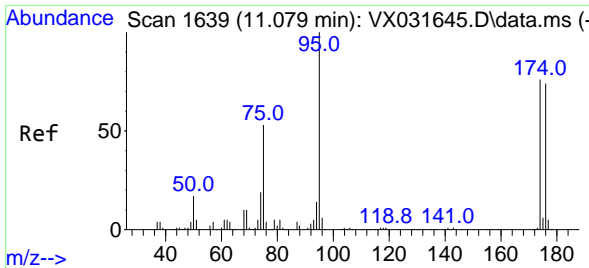
Tgt Ion: 76 Resp: 2214  
 Ion Ratio Lower Upper  
 76 100  
 78 0.0 25.5 38.3#



#59  
 2-Hexanone  
 Concen: 26.445 ug/l  
 RT: 9.482 min Scan# 1377  
 Delta R.T. 0.049 min  
 Lab File: VX031695.D  
 Acq: 27 Sep 2022 12:03

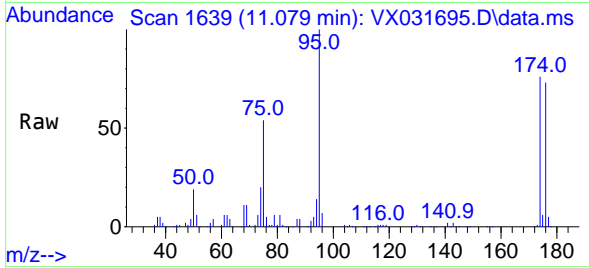
Tgt Ion: 43 Resp: 26207  
 Ion Ratio Lower Upper  
 43 100  
 58 21.8 26.7 80.0#



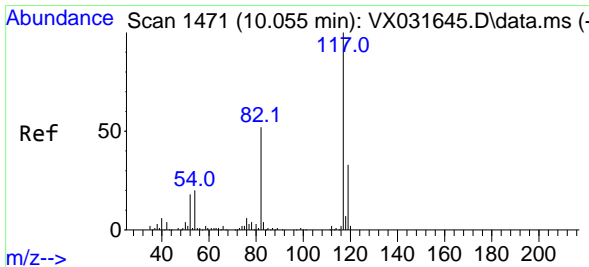
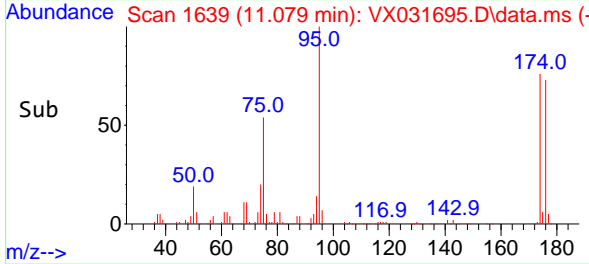
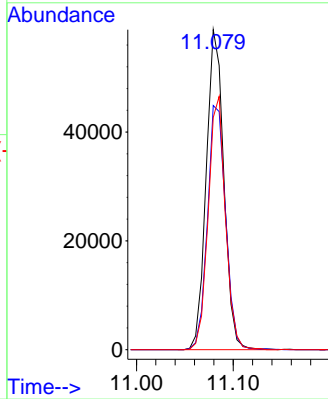


#62  
 4-Bromofluorobenzene  
 Concen: 48.661 ug/l  
 RT: 11.079 min Scan# 1639  
 Delta R.T. 0.000 min  
 Lab File: VX031695.D  
 Acq: 27 Sep 2022 12:03

Instrument : MSVOA\_X  
 ClientSampleId : TP1-0923

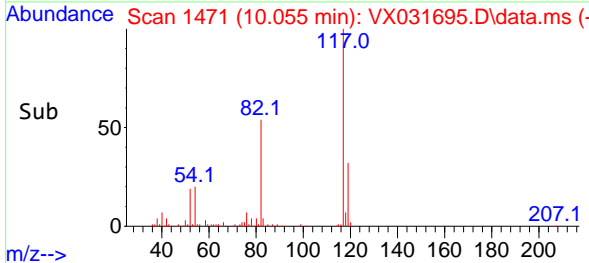
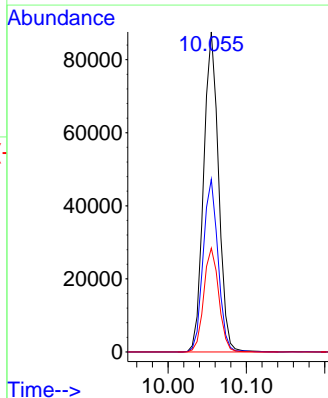
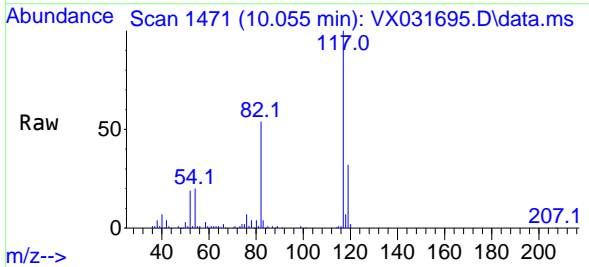


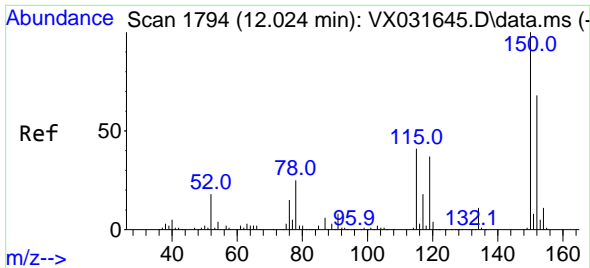
Tgt Ion: 95 Resp: 74421  
 Ion Ratio Lower Upper  
 95 100  
 174 79.1 0.0 153.2  
 176 77.4 0.0 144.0



#63  
 Chlorobenzene-d5  
 Concen: 50.000 ug/l  
 RT: 10.055 min Scan# 1471  
 Delta R.T. 0.000 min  
 Lab File: VX031695.D  
 Acq: 27 Sep 2022 12:03

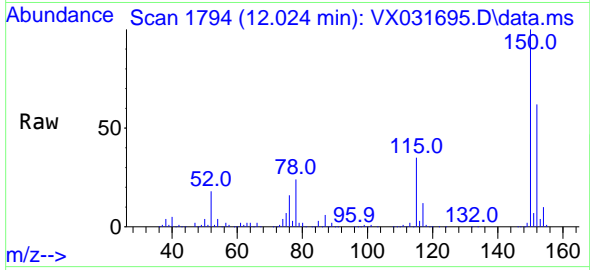
Tgt Ion: 117 Resp: 115962  
 Ion Ratio Lower Upper  
 117 100  
 82 54.0 46.8 70.2  
 119 32.4 26.4 39.6



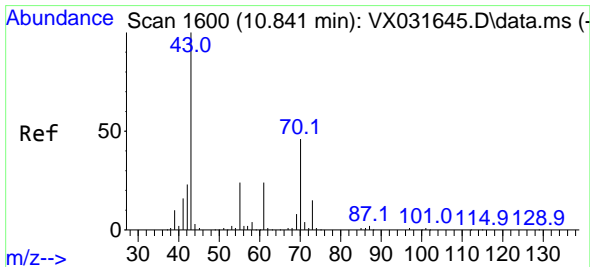
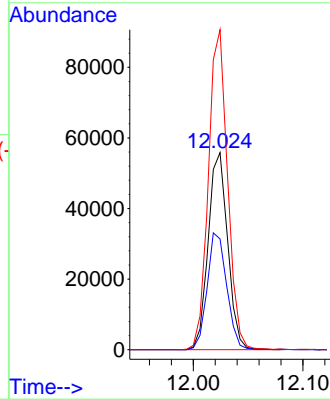
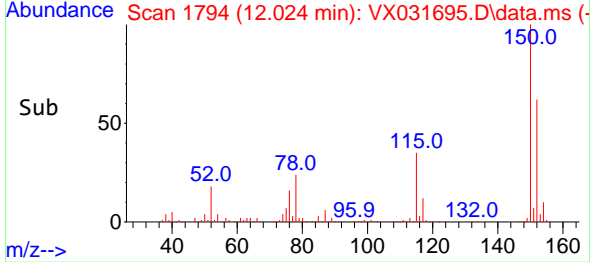


#72  
 1,4-Dichlorobenzene-d4  
 Concen: 50.000 ug/l  
 RT: 12.024 min Scan# 11  
 Delta R.T. 0.000 min  
 Lab File: VX031695.D  
 Acq: 27 Sep 2022 12:03

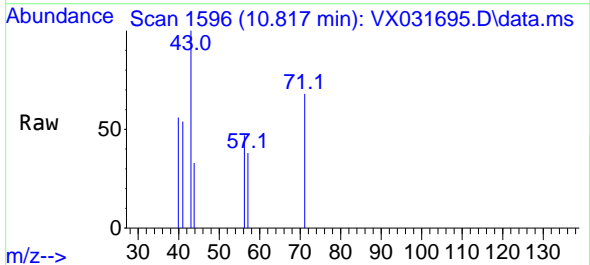
Instrument : MSVOA\_X  
 ClientSampleId : TP1-0923



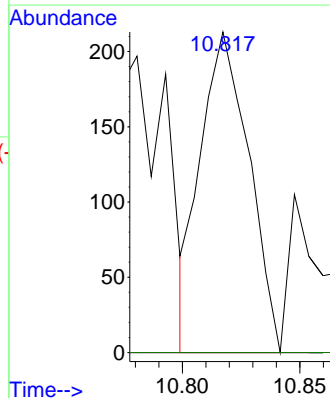
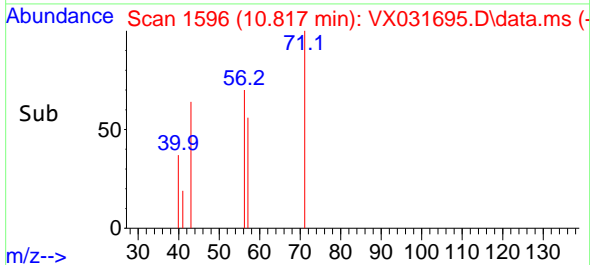
Tgt Ion:152 Resp: 68943  
 Ion Ratio Lower Upper  
 152 100  
 115 59.5 43.4 130.1  
 150 159.8 0.0 346.8

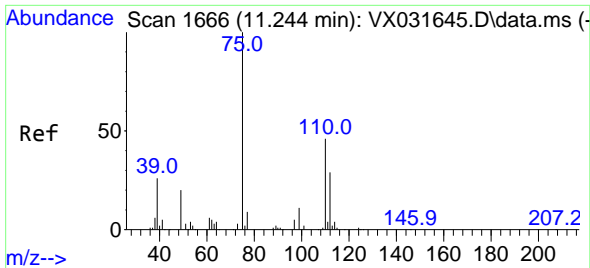


#74  
 N-ethyl acetate  
 Concen: 0.211 ug/l  
 RT: 10.817 min Scan# 1596  
 Delta R.T. -0.025 min  
 Lab File: VX031695.D  
 Acq: 27 Sep 2022 12:03



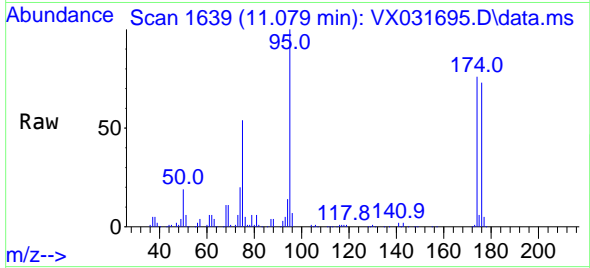
Tgt Ion: 43 Resp: 305  
 Ion Ratio Lower Upper  
 43 100  
 70 0.0 33.4 50.2#  
 55 0.0 18.2 27.2#  
 61 0.0 19.3 28.9#



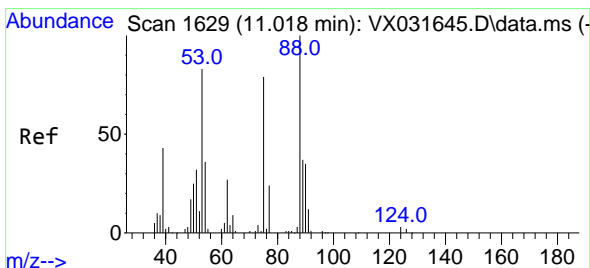
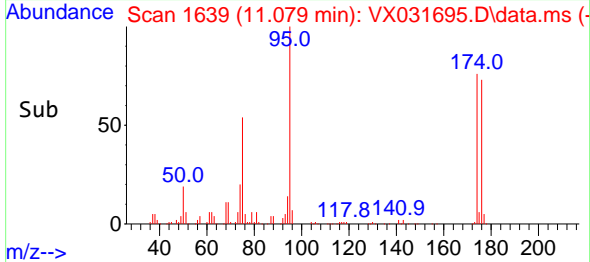
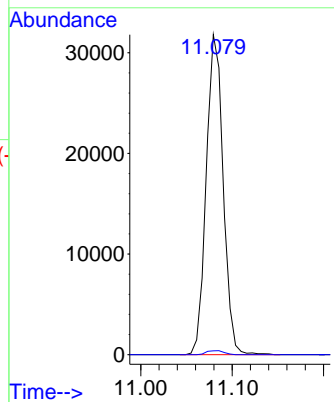


#76  
 1,2,3-Trichloropropane  
 Concen: 32.629 ug/l  
 RT: 11.079 min Scan# 1639  
 Delta R.T. -0.159 min  
 Lab File: VX031695.D  
 Acq: 27 Sep 2022 12:03

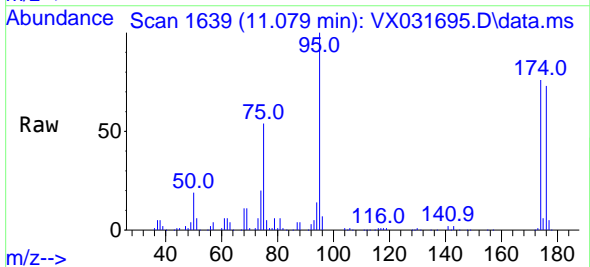
Instrument : MSVOA\_X  
 ClientSampleId : TP1-0923



Tgt Ion: 75 Resp: 40781  
 Ion Ratio Lower Upper  
 75 100  
 77 1.3 20.3 60.9#



#81  
 trans-1,4-Dichloro-2-butene  
 Concen: 107.279 ug/l  
 RT: 11.079 min Scan# 1639  
 Delta R.T. 0.061 min  
 Lab File: VX031695.D  
 Acq: 27 Sep 2022 12:03



Tgt Ion: 75 Resp: 40781  
 Ion Ratio Lower Upper  
 75 100  
 53 0.0 77.6 116.4#  
 89 0.0 37.4 56.0#

