

Data Path : Z:\voasrv\HPCHEM1\MSVOA_X\Data\VX092722\
 Data File : VX031705.D
 Acq On : 27 Sep 2022 16:34
 Operator : JC/MD
 Sample : N4791-06DL 10X
 Misc : 5.0mL/MSVOA_X/WATER
 ALS Vial : 19 Sample Multiplier: 1

Instrument :
 MSVOA_X
 ClientSampleId :
 BP-VPB-RW5-GW-568-570DL

Quant Time: Sep 27 18:21:42 2022
 Quant Method : Z:\voasrv\HPCHEM1\MSVOA_X\Method\82X092622W.M
 Quant Title : SW846 8260
 QLast Update : Tue Sep 27 01:44:18 2022
 Response via : Initial Calibration

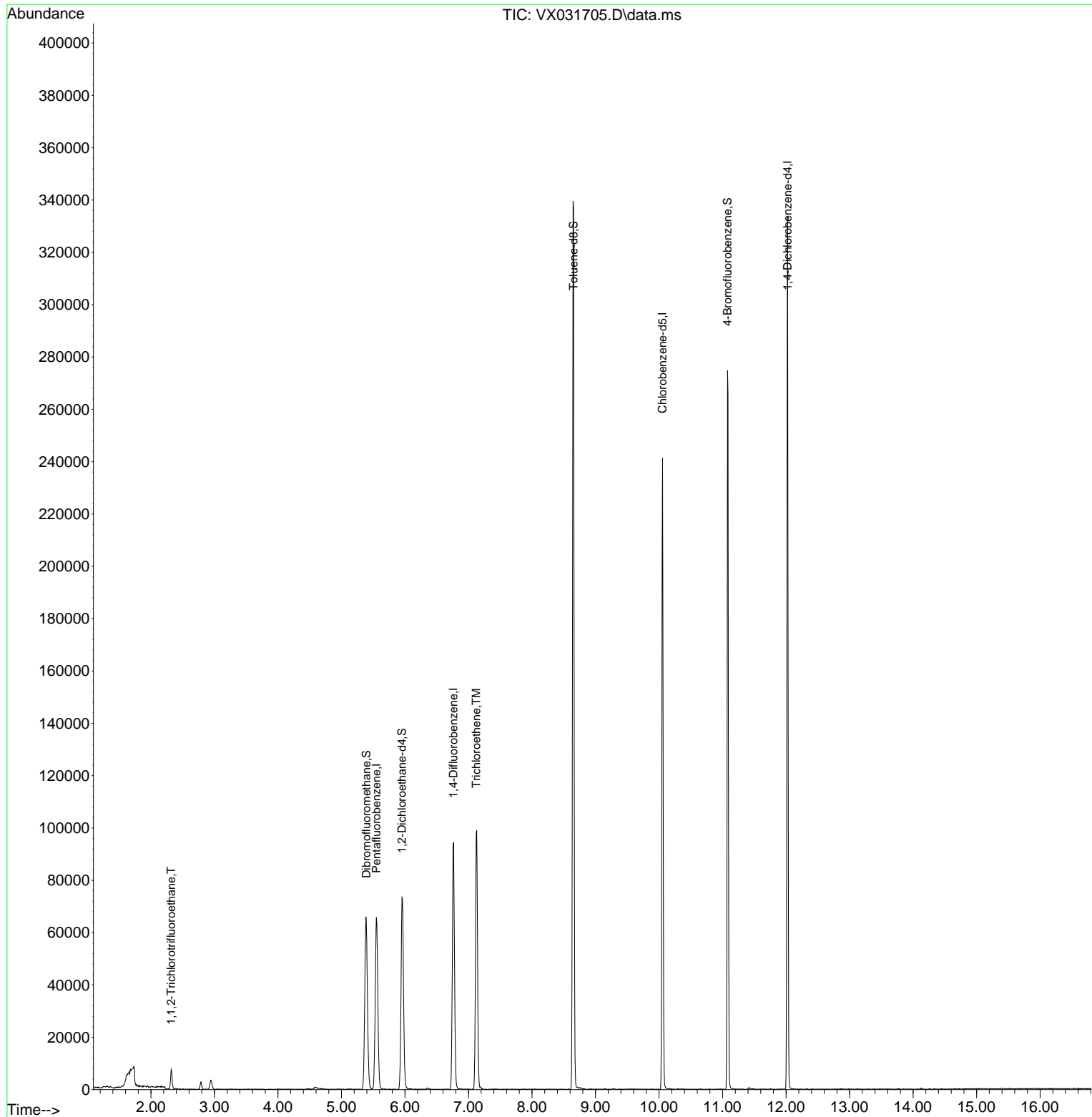
Compound	R.T.	QIon	Response	Conc	Units	Dev(Min)
Internal Standards						
1) Pentafluorobenzene	5.550	168	62040	50.000	ug/l	0.00
34) 1,4-Difluorobenzene	6.763	114	96903	50.000	ug/l	0.00
63) Chlorobenzene-d5	10.055	117	106124	50.000	ug/l	0.00
72) 1,4-Dichlorobenzene-d4	12.024	152	64591	50.000	ug/l	0.00
System Monitoring Compounds						
33) 1,2-Dichloroethane-d4	5.952	65	70903	53.847	ug/l	0.00
Spiked Amount	50.000	Range	74 - 125	Recovery	=	107.700%
35) Dibromofluoromethane	5.391	113	55750	48.284	ug/l	0.00
Spiked Amount	50.000	Range	75 - 124	Recovery	=	96.560%
50) Toluene-d8	8.653	98	203593	48.637	ug/l	0.00
Spiked Amount	50.000	Range	86 - 113	Recovery	=	97.280%
62) 4-Bromofluorobenzene	11.079	95	67934	44.279	ug/l	0.00
Spiked Amount	50.000	Range	83 - 123	Recovery	=	88.560%
Target Compounds						
9) 1,1,2-Trichlorotrifluo...	2.319	101	1905	2.310	ug/l	89
44) Trichloroethene	7.123	130	37729	32.799	ug/l	93

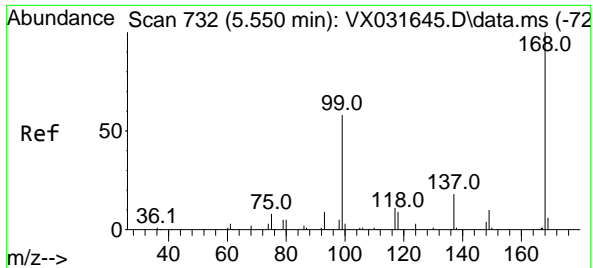
(#) = qualifier out of range (m) = manual integration (+) = signals summed

Data Path : Z:\voasrv\HPCHEM1\MSVOA_X\Data\VX092722\
 Data File : VX031705.D
 Acq On : 27 Sep 2022 16:34
 Operator : JC/MD
 Sample : N4791-06DL 10X
 Misc : 5.0mL/MSVOA_X/WATER
 ALS Vial : 19 Sample Multiplier: 1

Instrument :
 MSVOA_X
 ClientSampleId :
 BP-VPB-RW5-GW-568-570DL

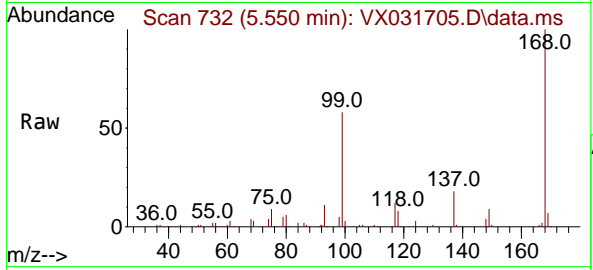
Quant Time: Sep 27 18:21:42 2022
 Quant Method : Z:\voasrv\HPCHEM1\MSVOA_X\Method\82X092622W.M
 Quant Title : SW846 8260
 QLast Update : Tue Sep 27 01:44:18 2022
 Response via : Initial Calibration



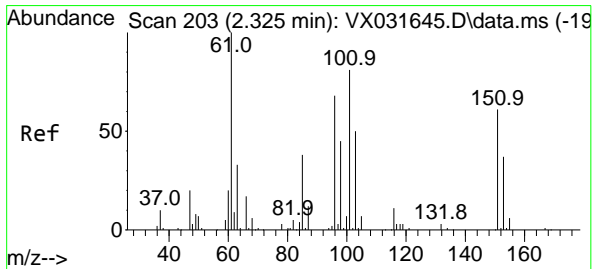
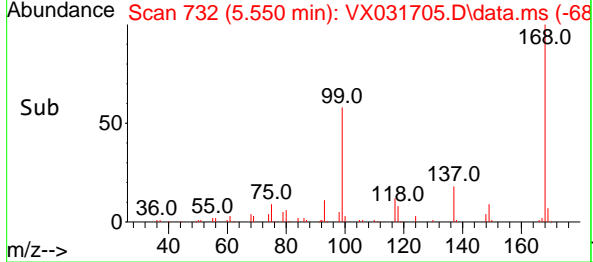
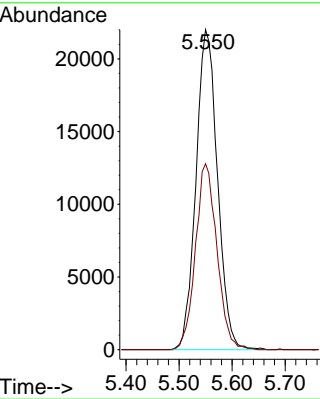


#1
 Pentafluorobenzene
 Concen: 50.000 ug/l
 RT: 5.550 min Scan# 71
 Delta R.T. -0.006 min
 Lab File: VX031705.D
 Acq: 27 Sep 2022 16:34

Instrument : MSVOA_X
 ClientSampleId : BP-VPB-RW5-GW-568-570DL

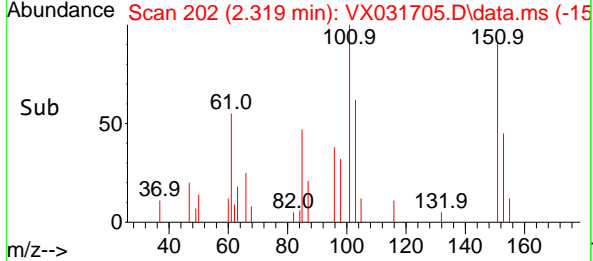
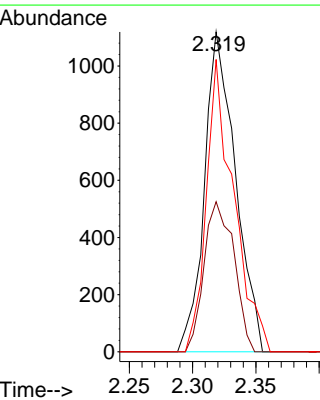
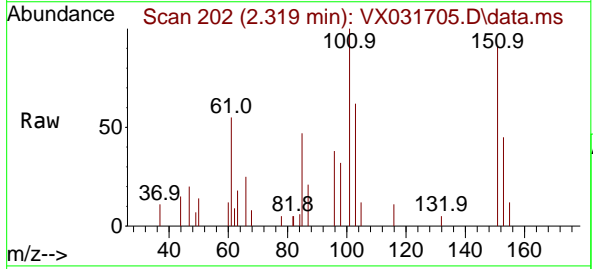


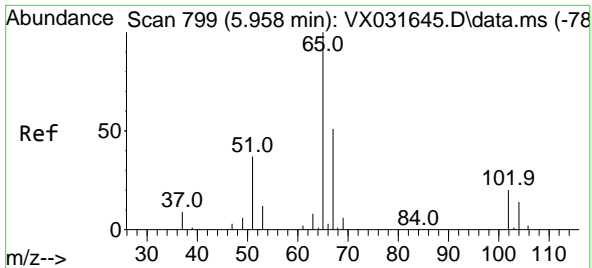
Tgt Ion:168 Resp: 62040
 Ion Ratio Lower Upper
 168 100
 99 58.1 48.8 73.2



#9
 1,1,2-Trichlorotrifluoroethane
 Concen: 2.310 ug/l
 RT: 2.319 min Scan# 202
 Delta R.T. -0.012 min
 Lab File: VX031705.D
 Acq: 27 Sep 2022 16:34

Tgt Ion:101 Resp: 1905
 Ion Ratio Lower Upper
 101 100
 85 45.3 38.6 57.8
 151 80.8 54.0 81.0

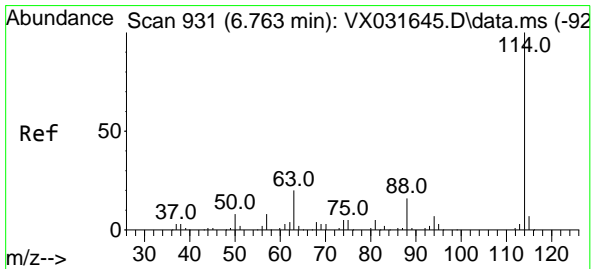
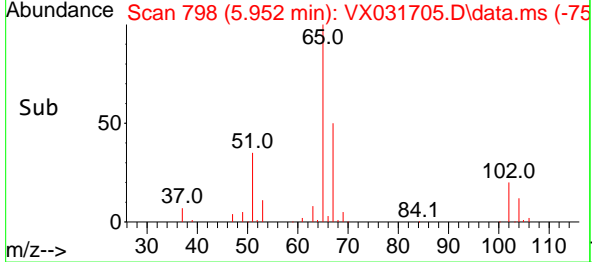
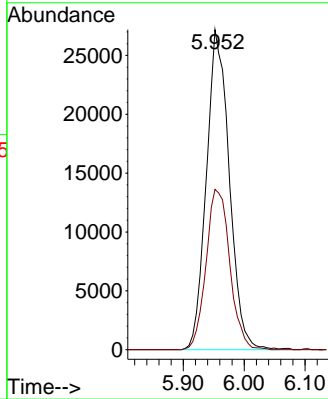
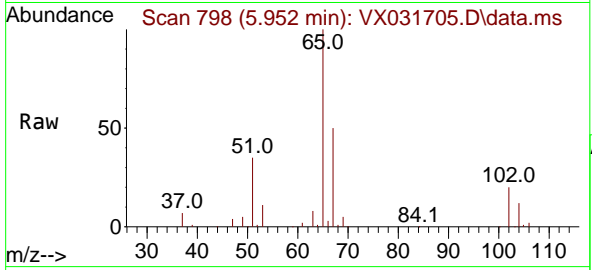




#33
 1,2-Dichloroethane-d4
 Concen: 53.847 ug/l
 RT: 5.952 min Scan# 798
 Delta R.T. -0.006 min
 Lab File: VX031705.D
 Acq: 27 Sep 2022 16:34

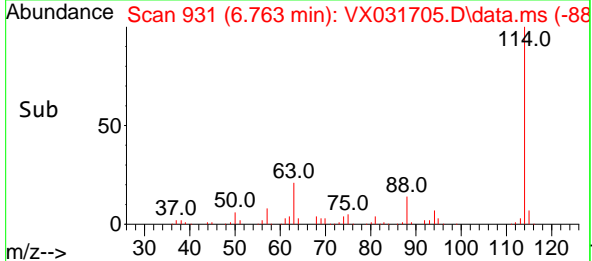
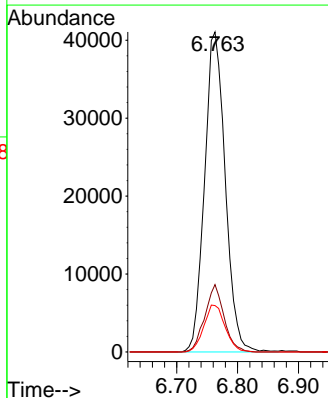
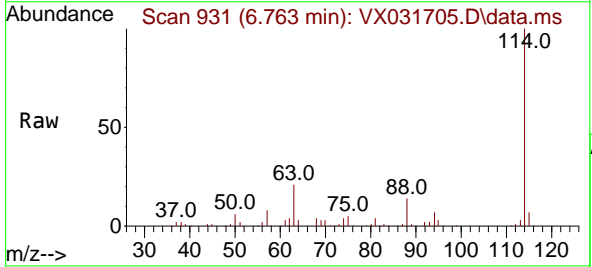
Instrument : MSVOA_X
 ClientSampleId : BP-VPB-RW5-GW-568-570DL

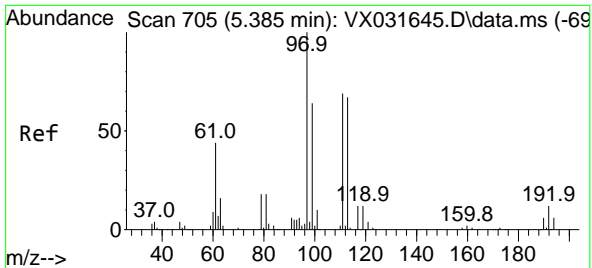
Tgt Ion: 65 Resp: 70903
 Ion Ratio Lower Upper
 65 100
 67 52.1 0.0 102.4



#34
 1,4-Difluorobenzene
 Concen: 50.000 ug/l
 RT: 6.763 min Scan# 931
 Delta R.T. -0.000 min
 Lab File: VX031705.D
 Acq: 27 Sep 2022 16:34

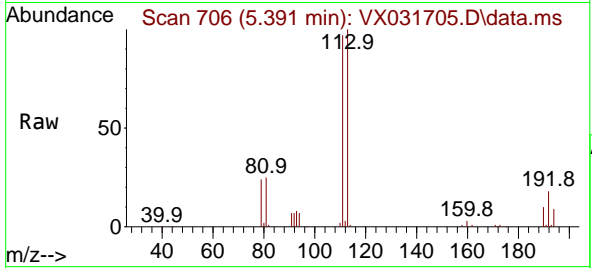
Tgt Ion:114 Resp: 96903
 Ion Ratio Lower Upper
 114 100
 63 21.0 0.0 42.6
 88 14.5 0.0 33.0



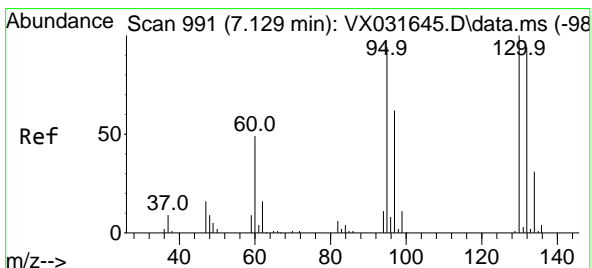
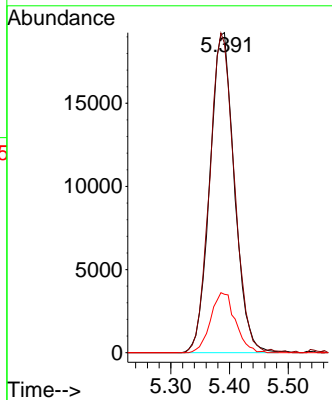
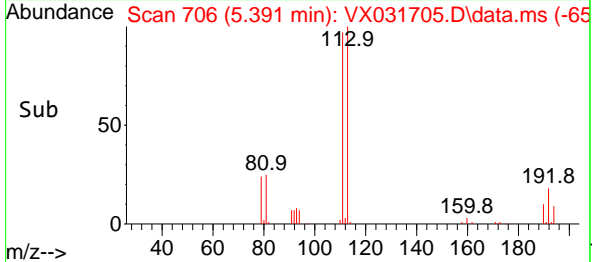


#35
 Dibromofluoromethane
 Concen: 48.284 ug/l
 RT: 5.391 min Scan# 706
 Delta R.T. 0.000 min
 Lab File: VX031705.D
 Acq: 27 Sep 2022 16:34

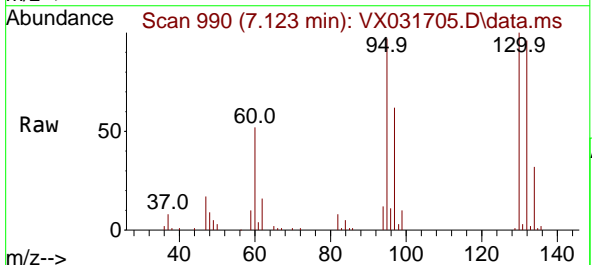
Instrument : MSVOA_X
 ClientSampleId : BP-VPB-RW5-GW-568-570DL



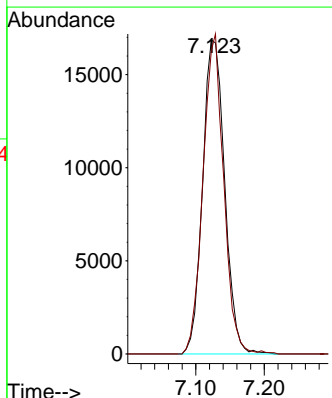
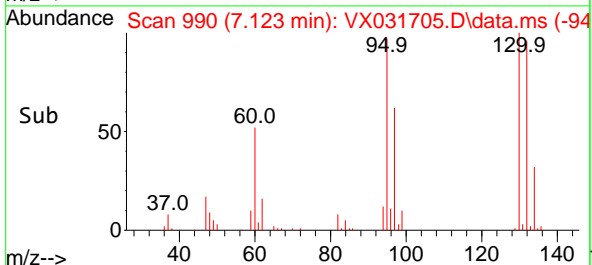
Tgt Ion:113 Resp: 55750
 Ion Ratio Lower Upper
 113 100
 111 100.7 82.4 123.6
 192 18.9 14.1 21.1

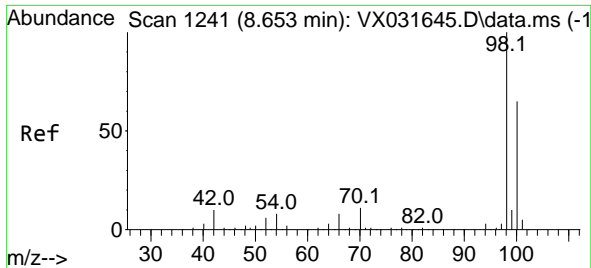


#44
 Trichloroethene
 Concen: 32.799 ug/l
 RT: 7.123 min Scan# 990
 Delta R.T. -0.006 min
 Lab File: VX031705.D
 Acq: 27 Sep 2022 16:34



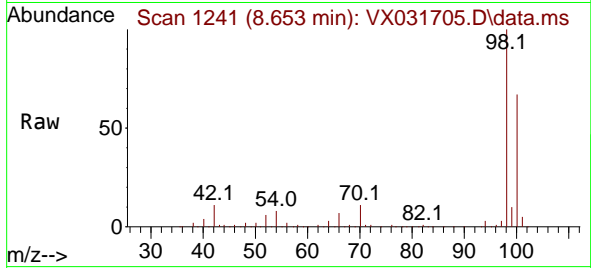
Tgt Ion:130 Resp: 37729
 Ion Ratio Lower Upper
 130 100
 95 96.7 0.0 206.8



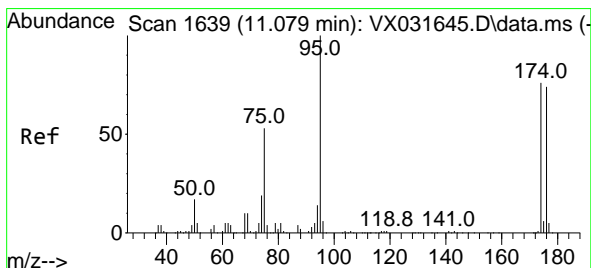
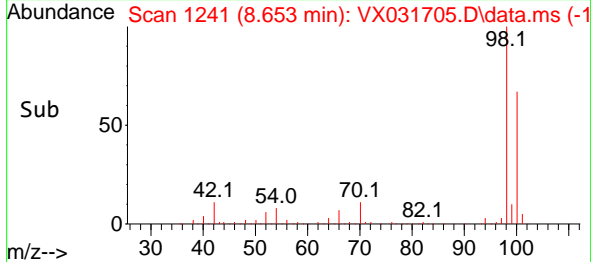
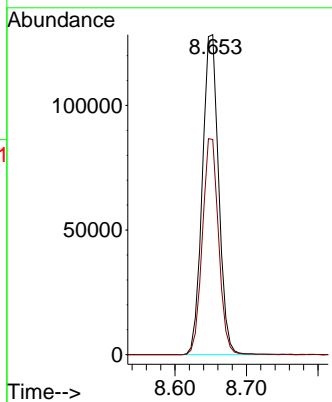


#50
 Toluene-d8
 Concen: 48.637 ug/l
 RT: 8.653 min Scan# 11
 Delta R.T. -0.000 min
 Lab File: VX031705.D
 Acq: 27 Sep 2022 16:34

Instrument : MSVOA_X
 ClientSampleId : BP-VPB-RW5-GW-568-570DL

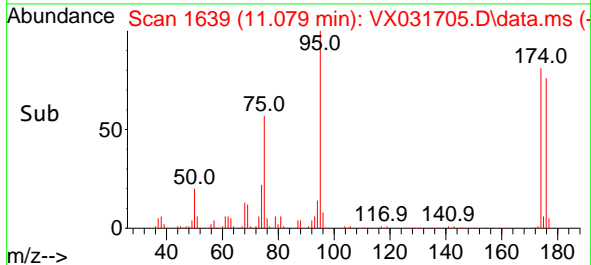
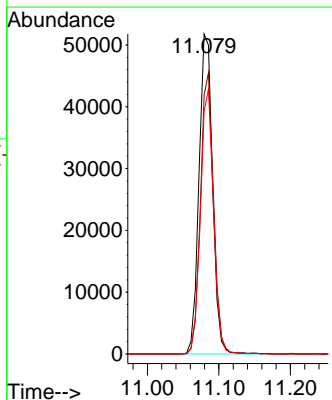
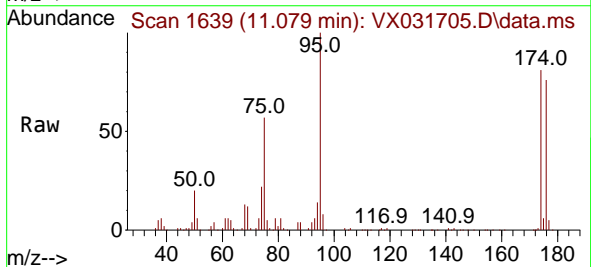


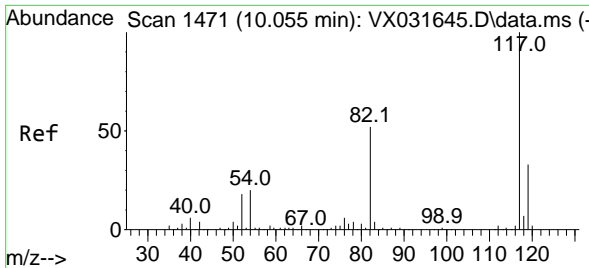
Tgt Ion: 98 Resp: 203593
 Ion Ratio Lower Upper
 98 100
 100 66.9 52.5 78.7



#62
 4-Bromofluorobenzene
 Concen: 44.279 ug/l
 RT: 11.079 min Scan# 1639
 Delta R.T. 0.000 min
 Lab File: VX031705.D
 Acq: 27 Sep 2022 16:34

Tgt Ion: 95 Resp: 67934
 Ion Ratio Lower Upper
 95 100
 174 85.4 0.0 153.2
 176 80.5 0.0 144.0



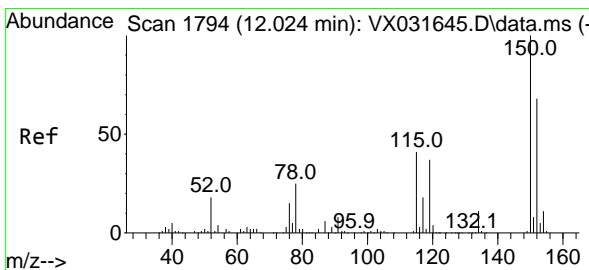
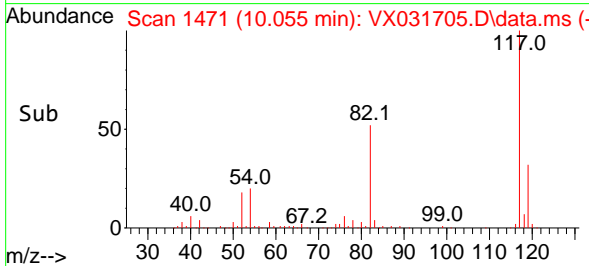
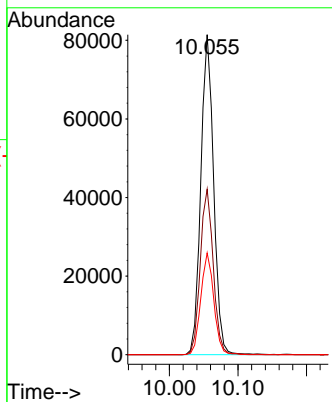
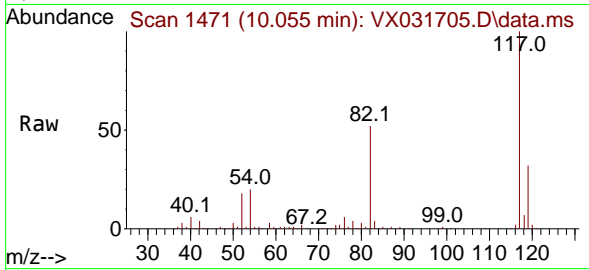


#63
 Chlorobenzene-d5
 Concen: 50.000 ug/l
 RT: 10.055 min Scan# 1471
 Delta R.T. 0.000 min
 Lab File: VX031705.D
 Acq: 27 Sep 2022 16:34

Instrument : MSVOA_X
 ClientSampleId : BP-VPB-RW5-GW-568-570DL

Tgt Ion:117 Resp: 106124

Ion	Ratio	Lower	Upper
117	100		
82	51.7	46.8	70.2
119	31.8	26.4	39.6



#72
 1,4-Dichlorobenzene-d4
 Concen: 50.000 ug/l
 RT: 12.024 min Scan# 1794
 Delta R.T. 0.000 min
 Lab File: VX031705.D
 Acq: 27 Sep 2022 16:34

Tgt Ion:152 Resp: 64591

Ion	Ratio	Lower	Upper
152	100		
115	59.8	43.4	130.1
150	159.6	0.0	346.8

