

Data Path : Z:\voasrv\HPCHEM1\MSVOA_X\Data\VX010825\
 Data File : VX044621.D
 Acq On : 08 Jan 2025 12:33
 Operator : JC/MD
 Sample : IBLK
 Misc : 5.0mL/MSVOA_X/WATER
 ALS Vial : 8 Sample Multiplier: 1

Instrument :
 MSVOA_X
 ClientSampleId :
 IBLK

Quant Time: Jan 09 00:27:25 2025
 Quant Method : Z:\voasrv\HPCHEM1\MSVOA_X\Method\82X010725W.M
 Quant Title : SW846 8260
 QLast Update : Wed Jan 08 03:57:12 2025
 Response via : Initial Calibration

Compound	R.T.	QIon	Response	Conc	Units	Dev(Min)

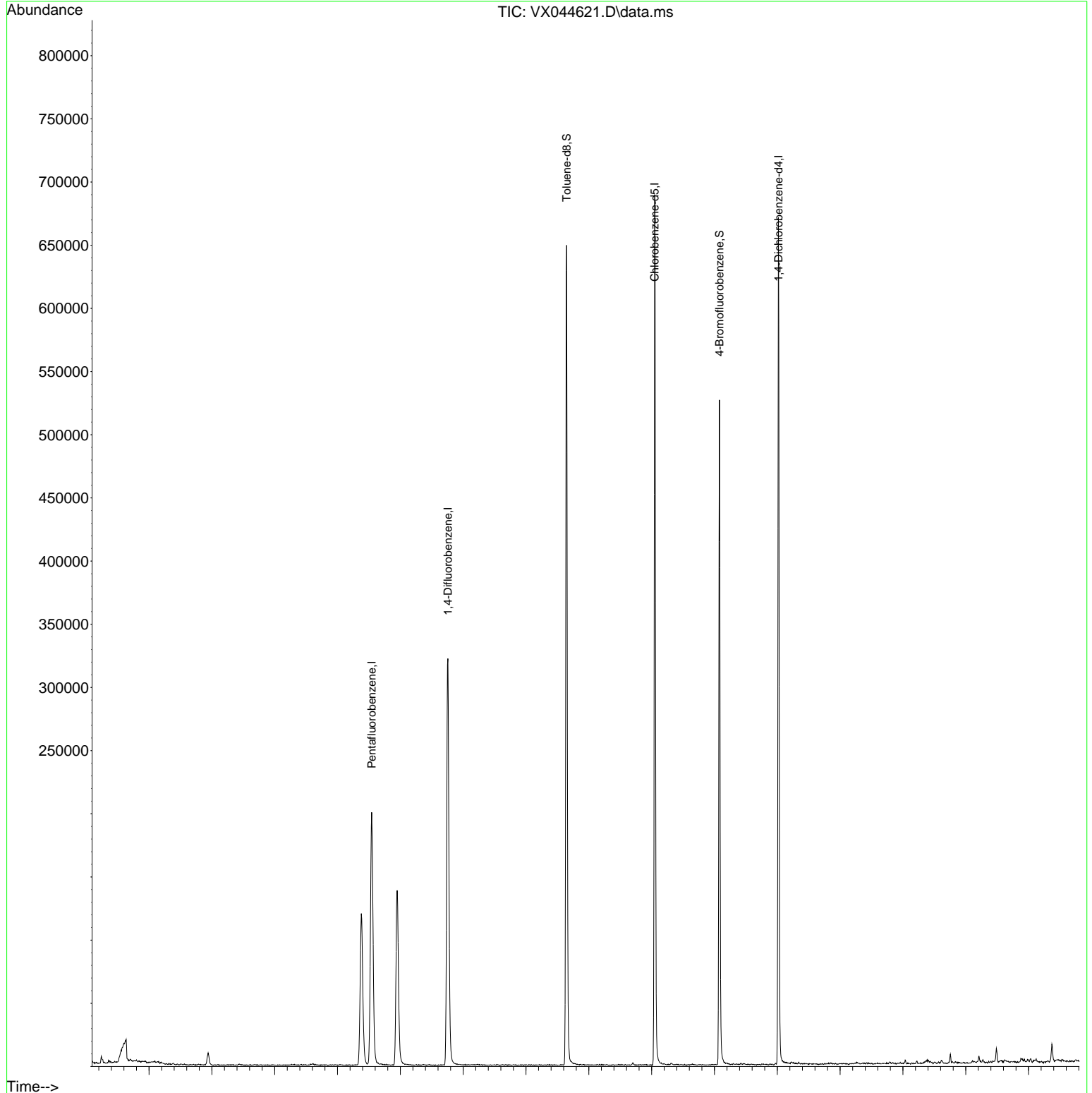
Internal Standards						
1) Pentafluorobenzene	5.544	168	176700	50.000	ug/l	0.00
34) 1,4-Difluorobenzene	6.757	114	324894	50.000	ug/l	0.00
63) Chlorobenzene-d5	10.049	117	296033	50.000	ug/l	0.00
72) 1,4-Dichlorobenzene-d4	12.018	152	129935	50.000	ug/l	0.00
System Monitoring Compounds						
33) 1,2-Dichloroethane-d4	5.946	65	145140	50.943	ug/l	0.00
Spiked Amount	50.000	Range 74 - 125	Recovery	=	101.880%	
35) Dibromofluoromethane	5.385	113	102400	45.964	ug/l	0.00
Spiked Amount	50.000	Range 75 - 124	Recovery	=	91.920%	
50) Toluene-d8	8.647	98	389814	51.225	ug/l	0.00
Spiked Amount	50.000	Range 86 - 113	Recovery	=	102.440%	
62) 4-Bromofluorobenzene	11.079	95	138018	51.384	ug/l	0.00
Spiked Amount	50.000	Range 77 - 121	Recovery	=	102.760%	
Target Compounds						
16) Acetone	2.380	43	1039	1.157	ug/l #	Qvalue 69

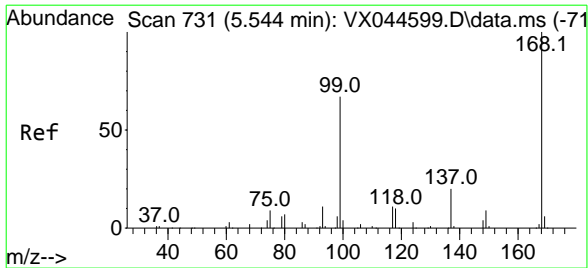
(#) = qualifier out of range (m) = manual integration (+) = signals summed

Data Path : Z:\voasrv\HPCHEM1\MSVOA_X\Data\VX010825\
 Data File : VX044621.D
 Acq On : 08 Jan 2025 12:33
 Operator : JC/MD
 Sample : IBLK
 Misc : 5.0mL/MSVOA_X/WATER
 ALS Vial : 8 Sample Multiplier: 1

Instrument :
 MSVOA_X
 ClientSampleId :
 IBLK

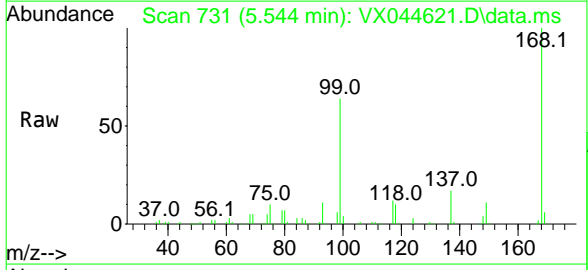
Quant Time: Jan 09 00:27:25 2025
 Quant Method : Z:\voasrv\HPCHEM1\MSVOA_X\Method\82X010725W.M
 Quant Title : SW846 8260
 QLast Update : Wed Jan 08 03:57:12 2025
 Response via : Initial Calibration



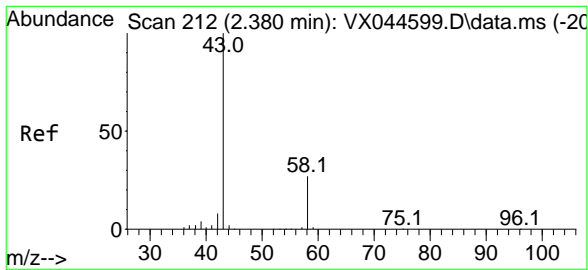
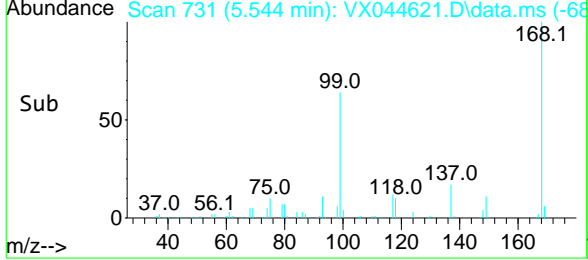
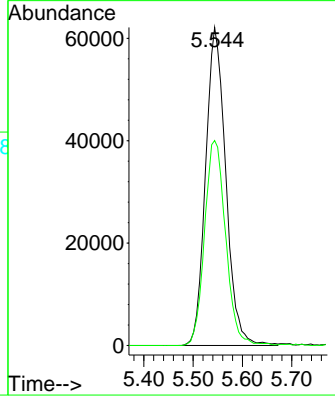


#1
 Pentafluorobenzene
 Concen: 50.000 ug/l
 RT: 5.544 min Scan# 73
 Delta R.T. -0.000 min
 Lab File: VX044621.D
 Acq: 08 Jan 2025 12:33

Instrument : MSVOA_X
 ClientSampleId : IBLK

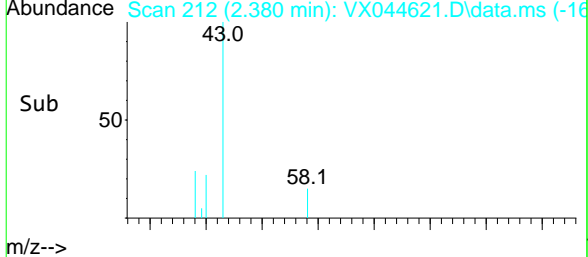
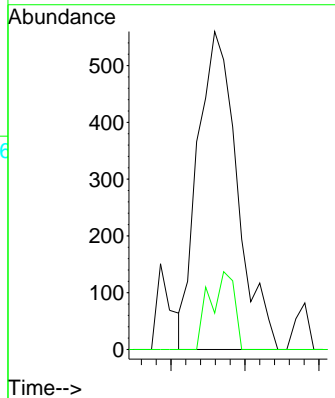
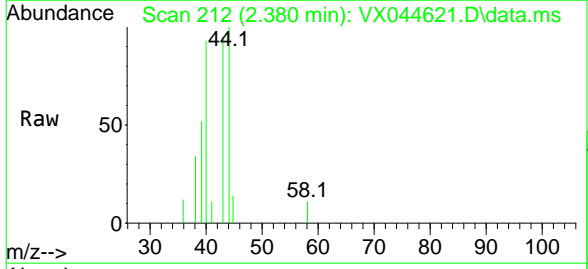


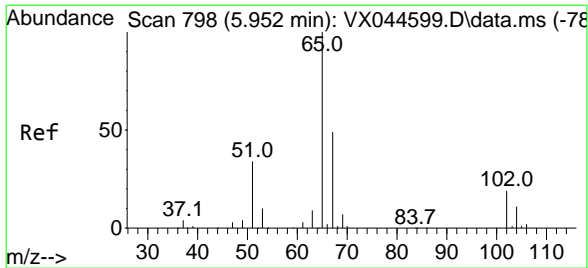
Tgt Ion: 168 Resp: 176700
 Ion Ratio Lower Upper
 168 100
 99 64.5 53.5 80.3



#16
 Acetone
 Concen: 1.157 ug/l
 RT: 2.380 min Scan# 212
 Delta R.T. -0.000 min
 Lab File: VX044621.D
 Acq: 08 Jan 2025 12:33

Tgt Ion: 43 Resp: 1039
 Ion Ratio Lower Upper
 43 100
 58 11.4 22.0 33.0#

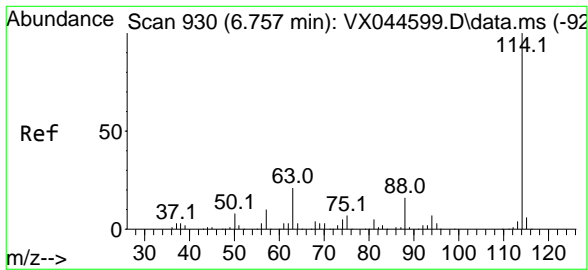
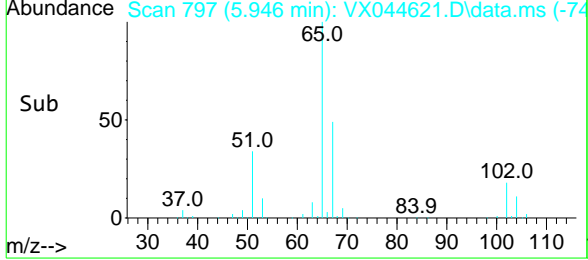
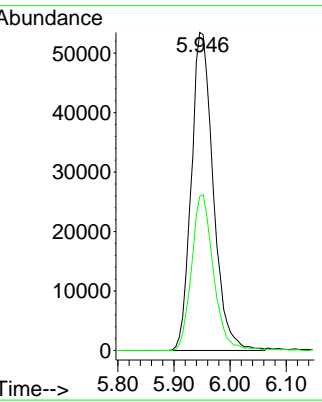
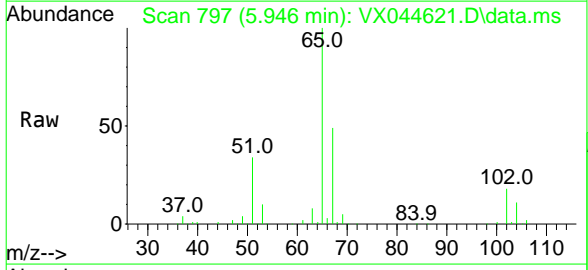




#33
 1,2-Dichloroethane-d4
 Concen: 50.943 ug/l
 RT: 5.946 min Scan# 79
 Delta R.T. -0.006 min
 Lab File: VX044621.D
 Acq: 08 Jan 2025 12:33

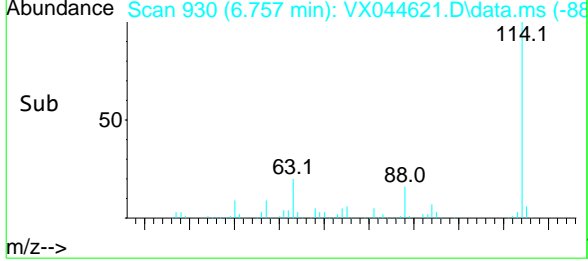
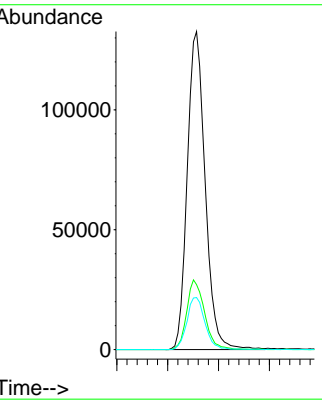
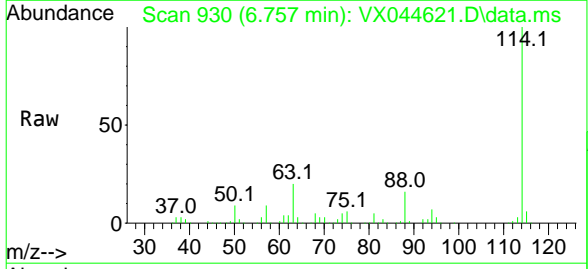
Instrument : MSVOA_X
 ClientSampleId : IBLK

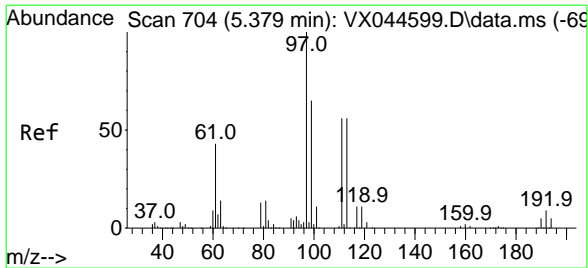
Tgt Ion	Resp	Lower	Upper
65	100		
67	48.7	0.0	99.0



#34
 1,4-Difluorobenzene
 Concen: 50.000 ug/l
 RT: 6.757 min Scan# 930
 Delta R.T. -0.000 min
 Lab File: VX044621.D
 Acq: 08 Jan 2025 12:33

Tgt Ion	Resp	Lower	Upper
114	100		
63	20.4	0.0	42.6
88	16.4	0.0	32.6

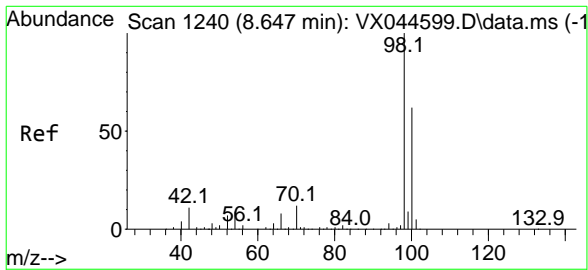
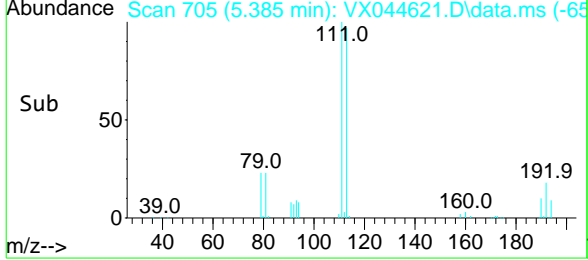
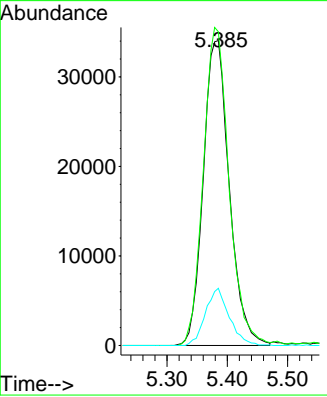
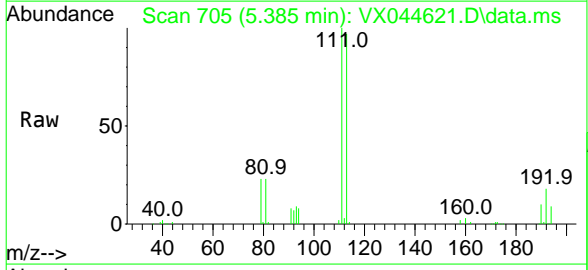




#35
 Dibromofluoromethane
 Concen: 45.964 ug/l
 RT: 5.385 min Scan# 70
 Delta R.T. 0.006 min
 Lab File: VX044621.D
 Acq: 08 Jan 2025 12:33

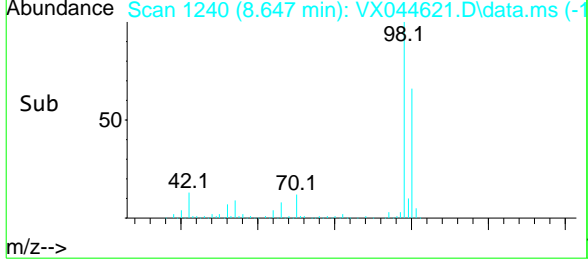
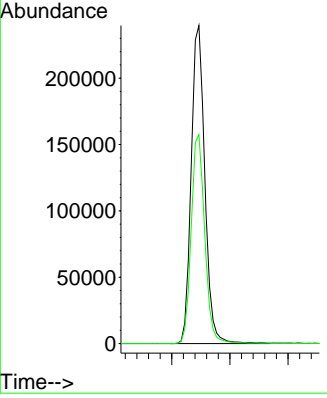
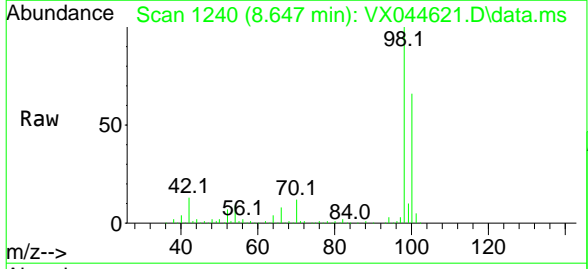
Instrument : MSVOA_X
 ClientSampleId : IBLK

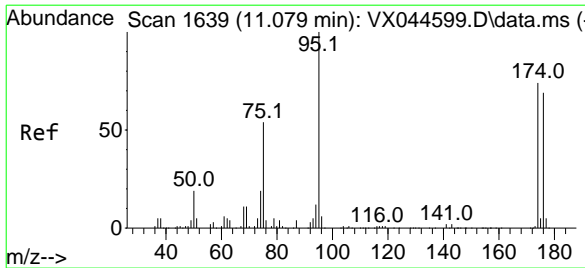
Tgt Ion	Resp	Lower	Upper
113	102400		
111	102.8	83.3	124.9
192	17.1	14.3	21.5



#50
 Toluene-d8
 Concen: 51.225 ug/l
 RT: 8.647 min Scan# 1240
 Delta R.T. -0.000 min
 Lab File: VX044621.D
 Acq: 08 Jan 2025 12:33

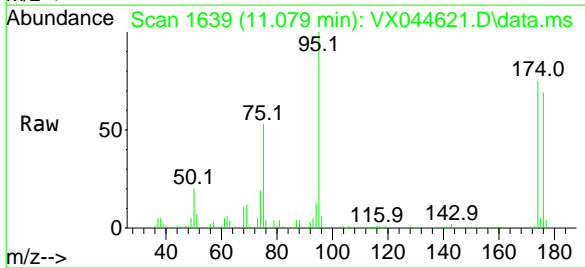
Tgt Ion	Resp	Lower	Upper
98	389814		
100	65.3	52.5	78.7



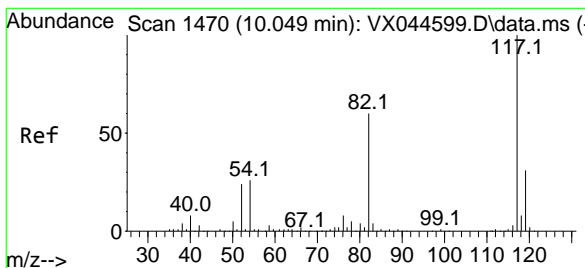
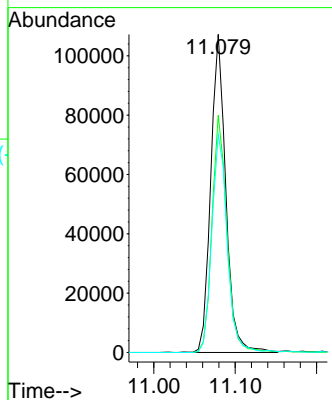
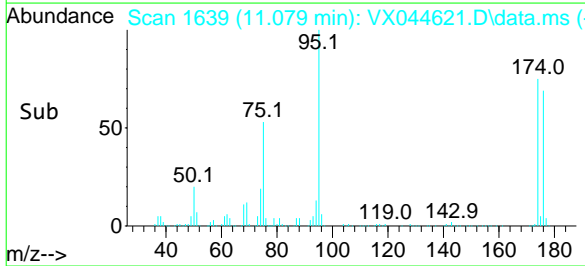


#62
 4-Bromofluorobenzene
 Concen: 51.384 ug/l
 RT: 11.079 min Scan# 1639
 Delta R.T. -0.000 min
 Lab File: VX044621.D
 Acq: 08 Jan 2025 12:33

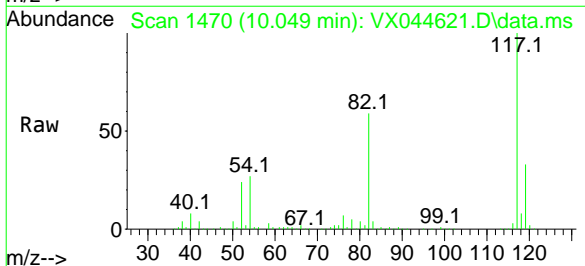
Instrument : MSVOA_X
 ClientSampleId : IBLK



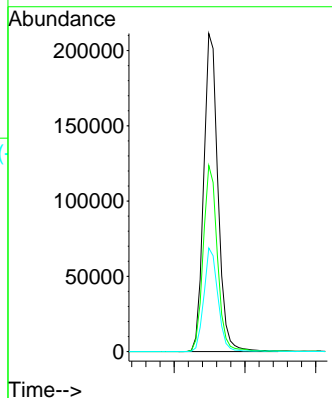
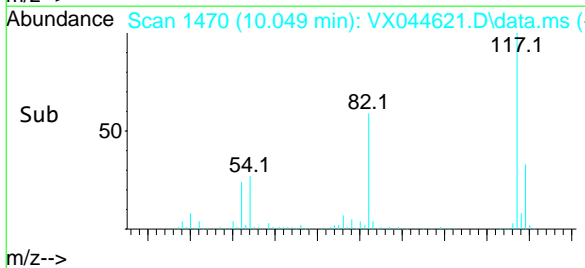
Tgt Ion: 95 Resp: 138018
 Ion Ratio Lower Upper
 95 100
 174 74.2 0.0 148.8
 176 70.1 0.0 139.8

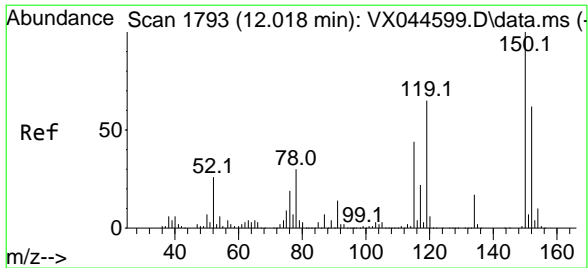


#63
 Chlorobenzene-d5
 Concen: 50.000 ug/l
 RT: 10.049 min Scan# 1470
 Delta R.T. -0.000 min
 Lab File: VX044621.D
 Acq: 08 Jan 2025 12:33



Tgt Ion: 117 Resp: 296033
 Ion Ratio Lower Upper
 117 100
 82 58.5 47.8 71.6
 119 32.6 25.0 37.6





#72
 1,4-Dichlorobenzene-d4
 Concen: 50.000 ug/l
 RT: 12.018 min Scan# 17
 Delta R.T. -0.000 min
 Lab File: VX044621.D
 Acq: 08 Jan 2025 12:33

Instrument : MSVOA_X
 ClientSampleId : IBLK

Tgt Ion:152 Resp: 129935

Ion	Ratio	Lower	Upper
152	100		
115	62.5	44.4	133.1
150	158.4	0.0	355.0

