

Data Path : Z:\voasrv\HPCHEM1\MSVOA_X\Data\VX010825\
 Data File : VX044628.D
 Acq On : 08 Jan 2025 15:13
 Operator : JC/MD
 Sample : Q1033-01
 Misc : 5.0mL/MSVOA_X/WATER
 ALS Vial : 15 Sample Multiplier: 1

Instrument :
 MSVOA_X
 ClientSampleId :
 28612

Quant Time: Jan 09 00:30:41 2025
 Quant Method : Z:\voasrv\HPCHEM1\MSVOA_X\Method\82X010725W.M
 Quant Title : SW846 8260
 QLast Update : Wed Jan 08 03:57:12 2025
 Response via : Initial Calibration

Compound	R.T.	QIon	Response	Conc	Units	Dev(Min)

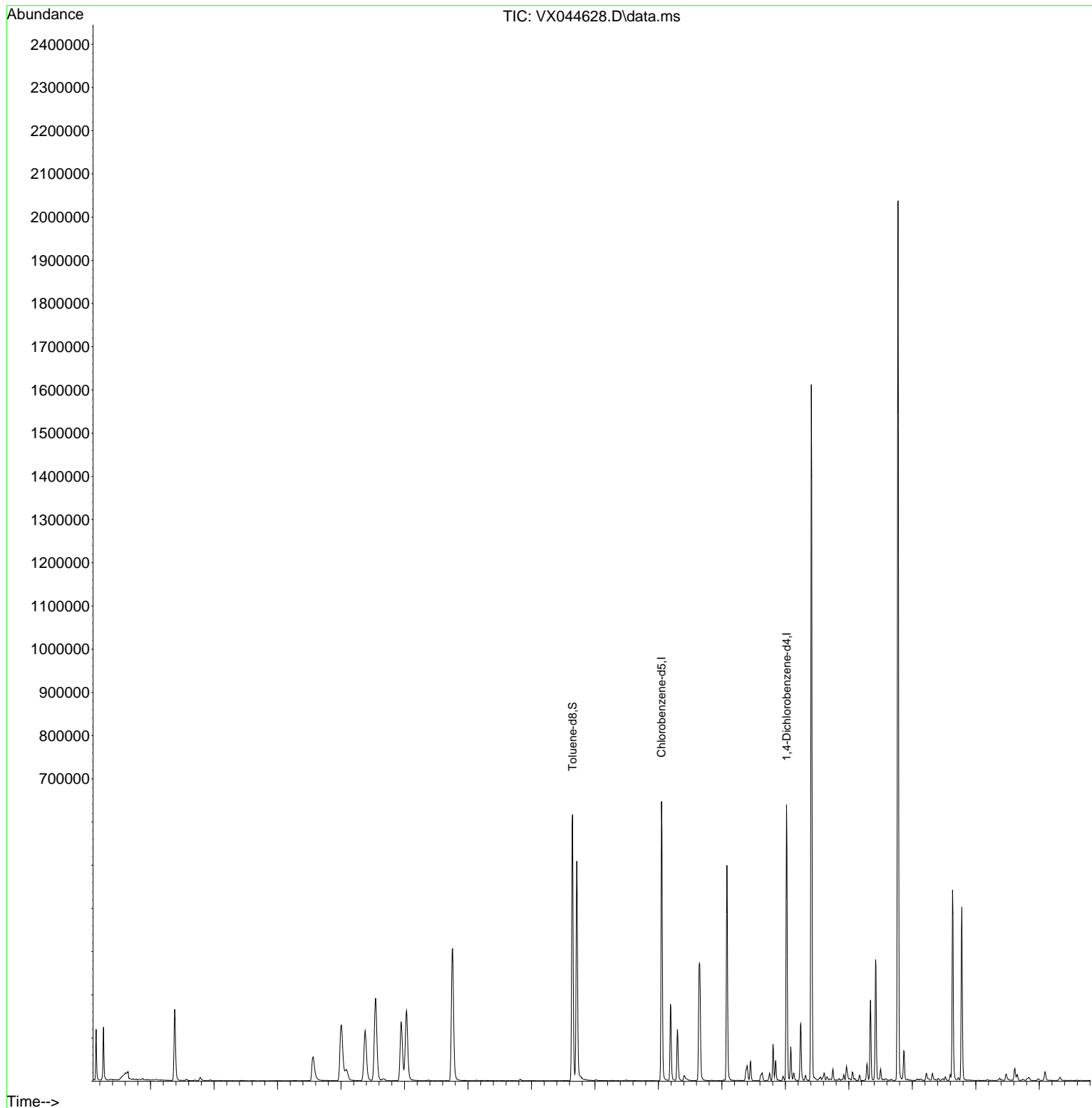
Internal Standards						
1) Pentafluorobenzene	5.544	168	168464	50.000	ug/l	0.00
34) 1,4-Difluorobenzene	6.757	114	306197	50.000	ug/l	0.00
63) Chlorobenzene-d5	10.049	117	274369	50.000	ug/l	0.00
72) 1,4-Dichlorobenzene-d4	12.018	152	124701	50.000	ug/l	0.00
System Monitoring Compounds						
33) 1,2-Dichloroethane-d4	5.946	65	138770	51.088	ug/l	0.00
Spiked Amount	50.000	Range 74 - 125	Recovery	=	102.180%	
35) Dibromofluoromethane	5.379	113	98820	47.065	ug/l	0.00
Spiked Amount	50.000	Range 75 - 124	Recovery	=	94.140%	
50) Toluene-d8	8.647	98	366134	51.051	ug/l	0.00
Spiked Amount	50.000	Range 86 - 113	Recovery	=	102.100%	
62) 4-Bromofluorobenzene	11.079	95	133269	52.646	ug/l	0.00
Spiked Amount	50.000	Range 77 - 121	Recovery	=	105.300%	
Target Compounds						
						Qvalue
7) Trichlorofluoromethane	1.874	101	1891	0.557	ug/l	86
16) Acetone	2.380	43	184424	215.419	ug/l	99
18) Methyl Acetate	2.697	43	1658	0.656	ug/l	95
20) Methylene Chloride	2.782	84	3082	1.411	ug/l	88
25) 2-Butanone	4.562	43	111943	90.590	ug/l	98
29) Tetrahydrofuran	5.007	42	128698	152.087	ug/l	99
30) Chloroform	5.087	83	26467	6.539	ug/l	96
38) Carbon Tetrachloride	5.678	117	4036	1.340	ug/l #	83
40) Benzene	6.031	78	191812	22.438	ug/l	99
47) Bromodichloromethane	7.824	83	2606	0.883	ug/l	94
52) Toluene	8.714	92	181567	35.202	ug/l	98
67) Ethyl Benzene	10.195	91	104752	10.476	ug/l	97
68) m/p-Xylenes	10.299	106	28223	7.681	ug/l	98
69) o-Xylene	10.640	106	42989	11.591	ug/l	99
70) Styrene	10.653	104	81248	13.696	ug/l	99
80) 1,3,5-Trimethylbenzene	11.451	105	20052	2.618	ug/l	99
84) 1,2,4-Trimethylbenzene	11.750	105	7437	0.966	ug/l	99

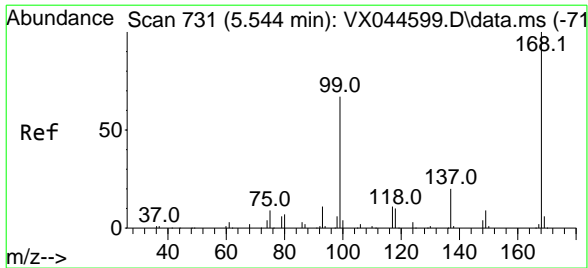
(#) = qualifier out of range (m) = manual integration (+) = signals summed

Data Path : Z:\voasrv\HPCHEM1\MSVOA_X\Data\VX010825\
 Data File : VX044628.D
 Acq On : 08 Jan 2025 15:13
 Operator : JC/MD
 Sample : Q1033-01
 Misc : 5.0mL/MSVOA_X/WATER
 ALS Vial : 15 Sample Multiplier: 1

Instrument :
 MSVOA_X
 ClientSampleId :
 28612

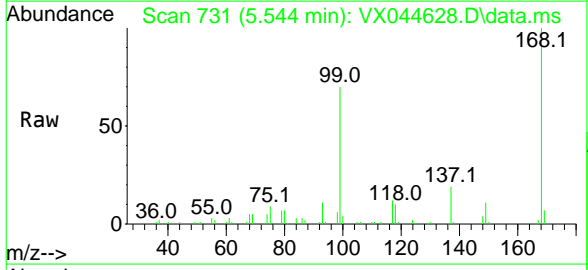
Quant Time: Jan 09 00:30:41 2025
 Quant Method : Z:\voasrv\HPCHEM1\MSVOA_X\Method\82X010725W.M
 Quant Title : SW846 8260
 QLast Update : Wed Jan 08 03:57:12 2025
 Response via : Initial Calibration



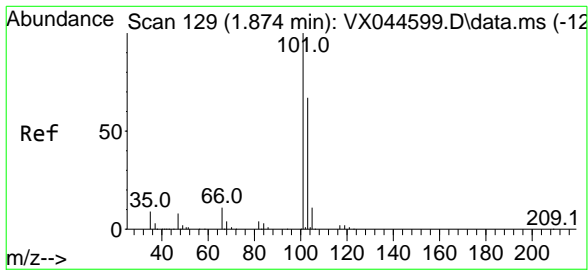
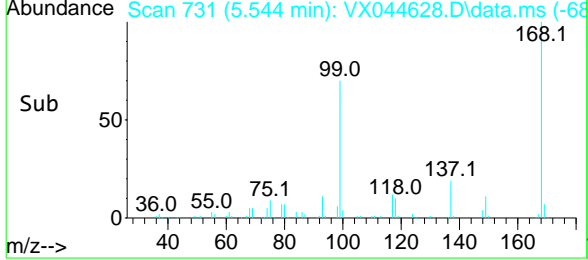
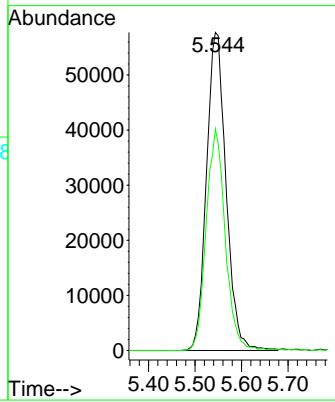


#1
 Pentafluorobenzene
 Concen: 50.000 ug/l
 RT: 5.544 min Scan# 73
 Delta R.T. -0.000 min
 Lab File: VX044628.D
 Acq: 08 Jan 2025 15:13

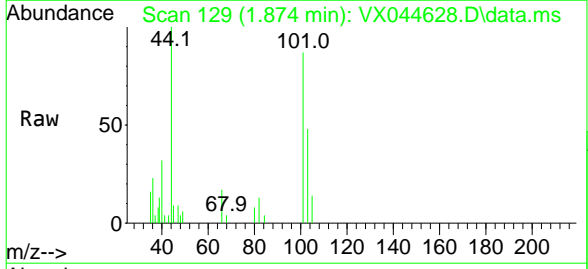
Instrument : MSVOA_X
 ClientSampleId : 28612



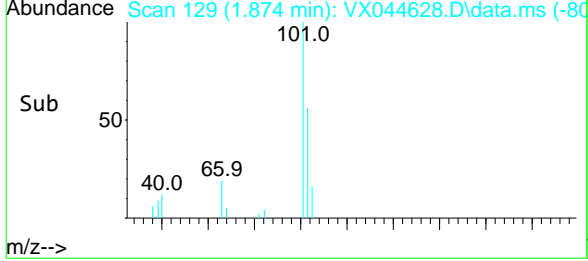
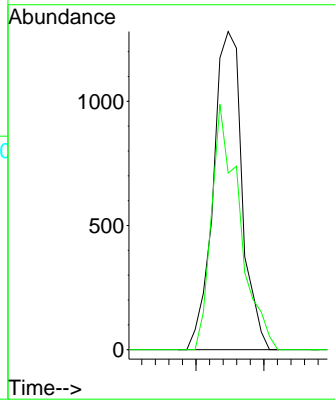
Tgt Ion:168 Resp: 168464
 Ion Ratio Lower Upper
 168 100
 99 69.7 53.5 80.3

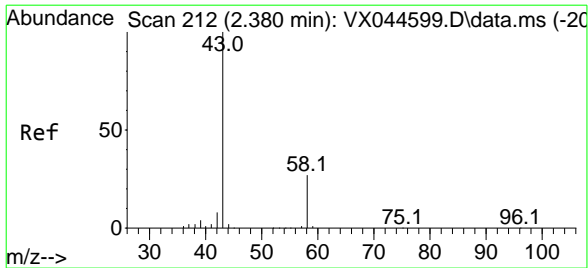


#7
 Trichlorofluoromethane
 Concen: 0.557 ug/l
 RT: 1.874 min Scan# 129
 Delta R.T. 0.000 min
 Lab File: VX044628.D
 Acq: 08 Jan 2025 15:13



Tgt Ion:101 Resp: 1891
 Ion Ratio Lower Upper
 101 100
 103 55.5 53.3 79.9

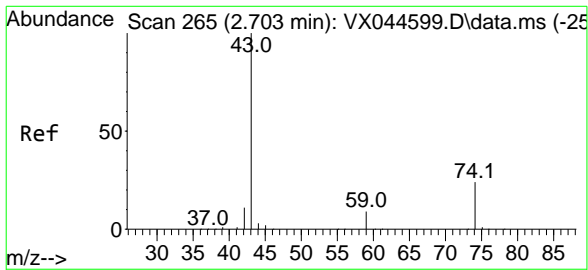
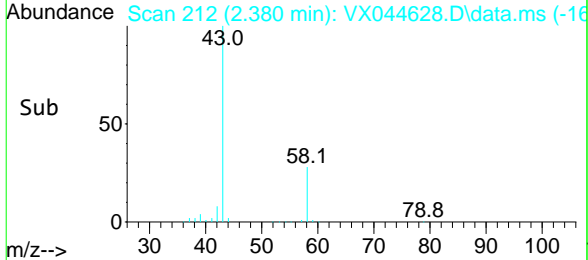
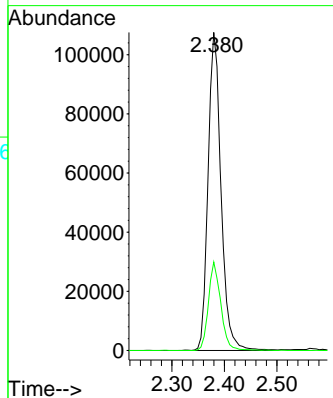
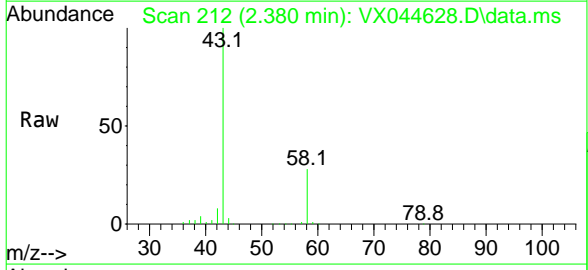




#16
 Acetone
 Concen: 215.419 ug/l
 RT: 2.380 min Scan# 21
 Delta R.T. 0.000 min
 Lab File: VX044628.D
 Acq: 08 Jan 2025 15:13

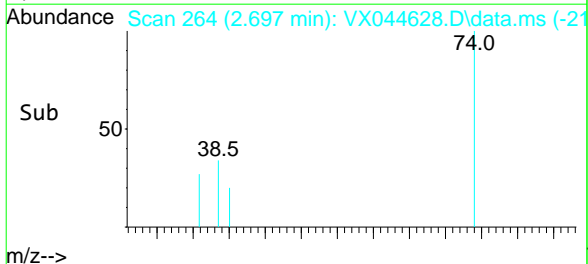
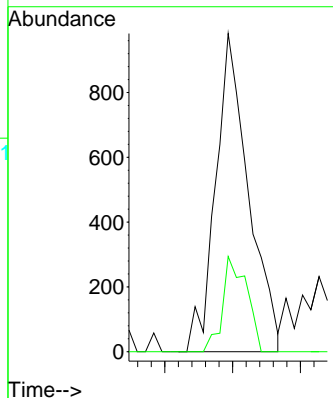
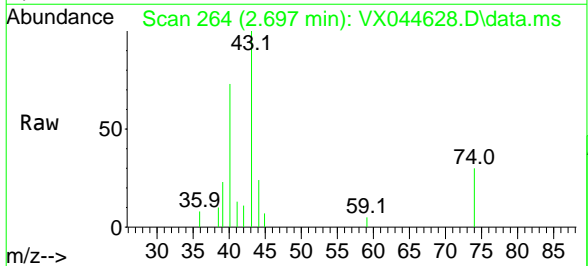
Instrument :
 MSVOA_X
 ClientSampleId :
 28612

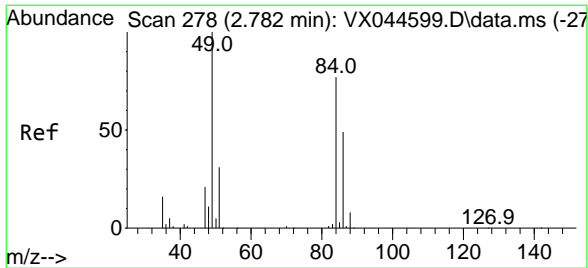
Tgt Ion: 43 Resp: 184424
 Ion Ratio Lower Upper
 43 100
 58 27.8 22.0 33.0



#18
 Methyl Acetate
 Concen: 0.656 ug/l
 RT: 2.697 min Scan# 264
 Delta R.T. -0.006 min
 Lab File: VX044628.D
 Acq: 08 Jan 2025 15:13

Tgt Ion: 43 Resp: 1658
 Ion Ratio Lower Upper
 43 100
 74 21.8 19.3 28.9

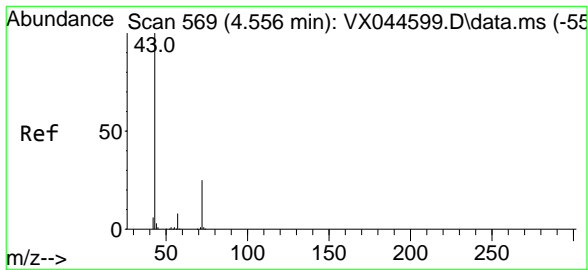
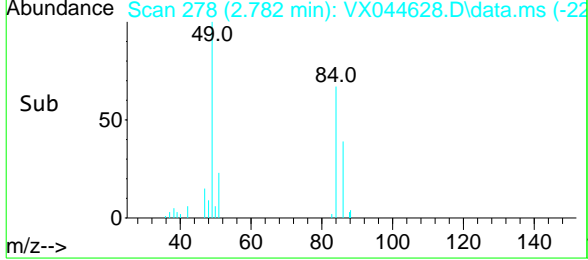
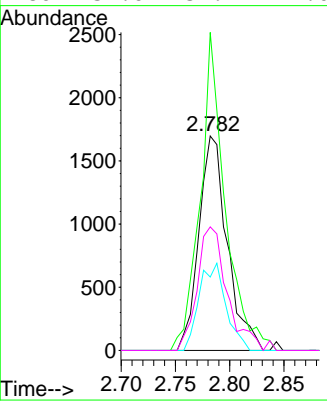
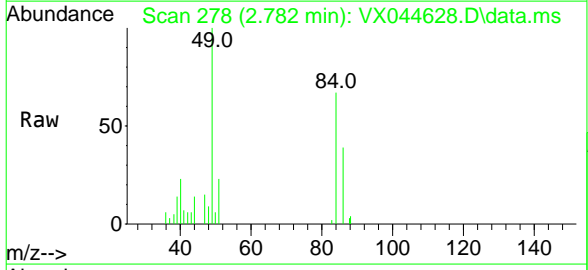




#20
 Methylene Chloride
 Concen: 1.411 ug/l
 RT: 2.782 min Scan# 27
 Delta R.T. 0.000 min
 Lab File: VX044628.D
 Acq: 08 Jan 2025 15:13

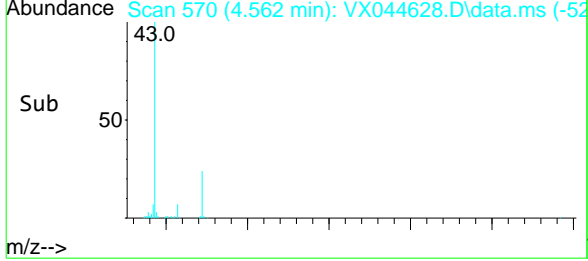
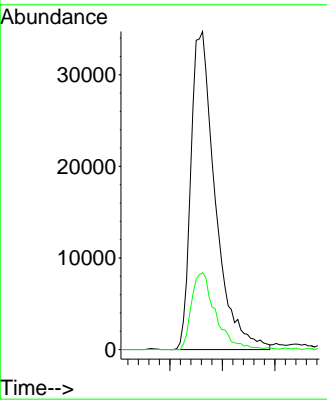
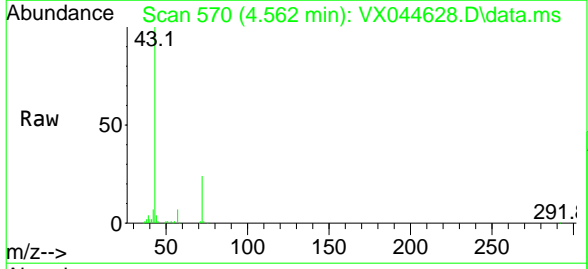
Instrument : MSVOA_X
 ClientSampleId : 28612

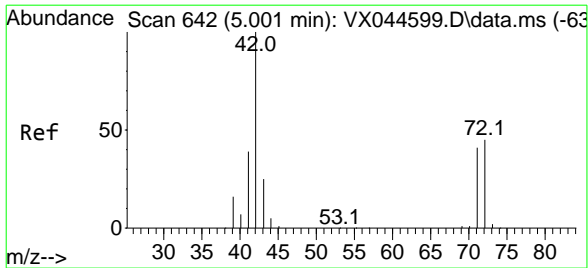
Tgt Ion	Resp	Lower	Upper
84	3082		
49	148.3	104.4	156.6
51	34.2	32.0	48.0
86	57.6	51.4	77.0



#25
 2-Butanone
 Concen: 90.590 ug/l
 RT: 4.562 min Scan# 570
 Delta R.T. 0.006 min
 Lab File: VX044628.D
 Acq: 08 Jan 2025 15:13

Tgt Ion	Resp	Lower	Upper
43	111943		
72	24.2	20.2	30.2

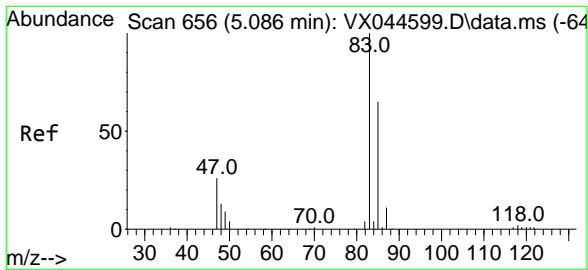
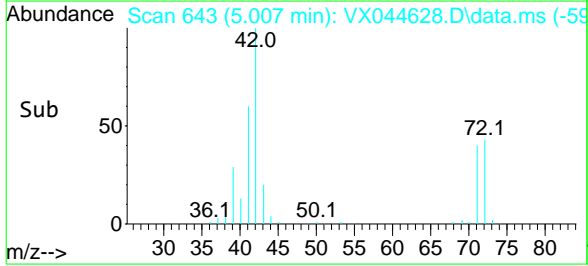
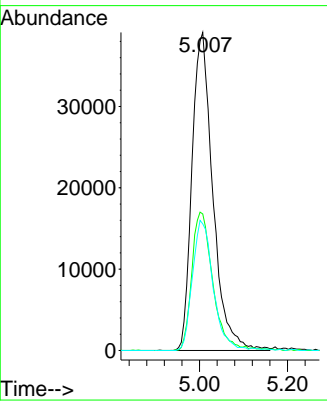
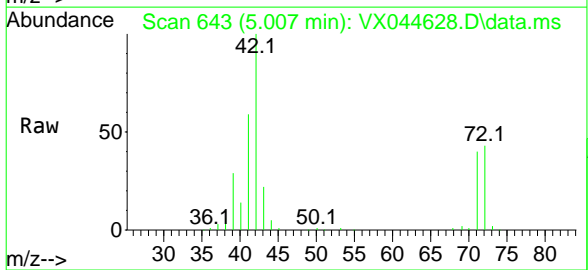




#29
 Tetrahydrofuran
 Concen: 152.087 ug/l
 RT: 5.007 min Scan# 64
 Delta R.T. 0.006 min
 Lab File: VX044628.D
 Acq: 08 Jan 2025 15:13

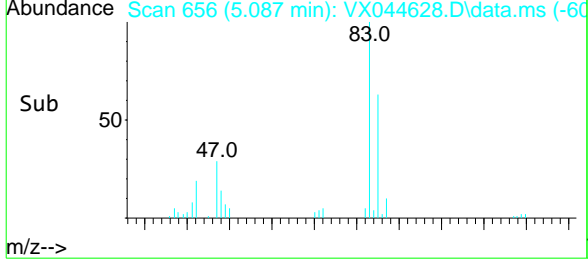
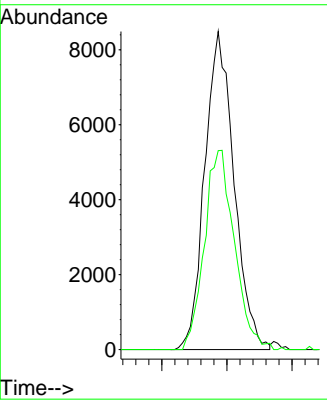
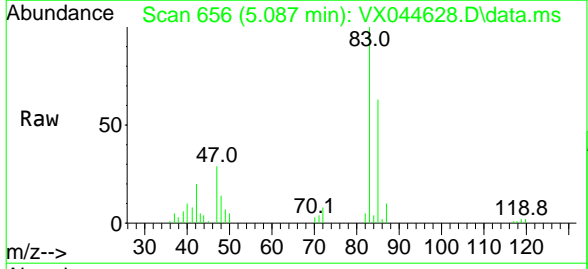
Instrument : MSVOA_X
 ClientSampleId : 28612

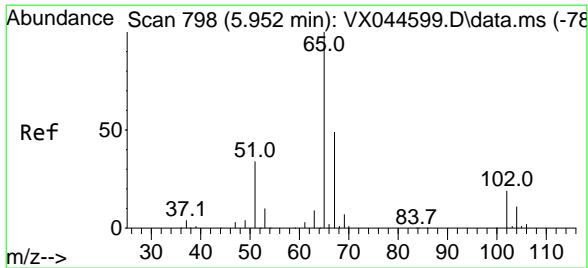
Tgt Ion	Resp	Lower	Upper
42	100		
72	44.1	36.1	54.1
71	40.4	33.0	49.6



#30
 Chloroform
 Concen: 6.539 ug/l
 RT: 5.087 min Scan# 656
 Delta R.T. 0.000 min
 Lab File: VX044628.D
 Acq: 08 Jan 2025 15:13

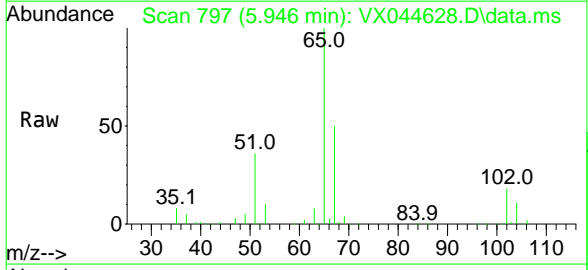
Tgt Ion	Resp	Lower	Upper
83	100		
85	62.5	52.3	78.5



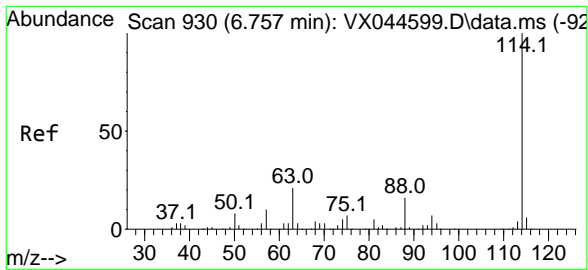
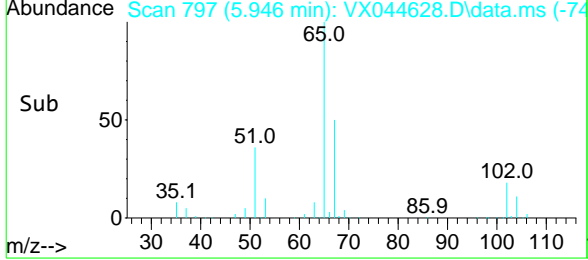
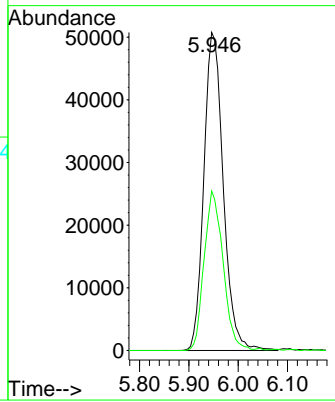


#33
 1,2-Dichloroethane-d4
 Concen: 51.088 ug/l
 RT: 5.946 min Scan# 79
 Delta R.T. -0.006 min
 Lab File: VX044628.D
 Acq: 08 Jan 2025 15:13

Instrument : MSVOA_X
 ClientSampleId : 28612

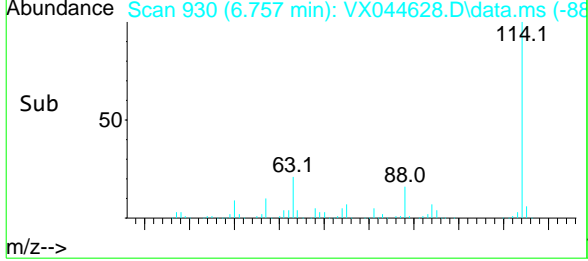
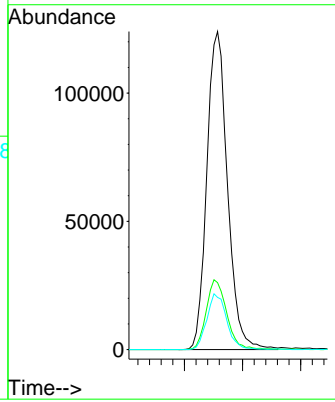
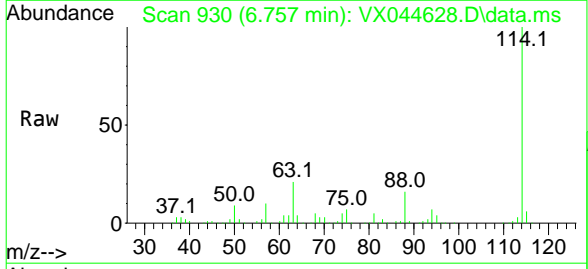


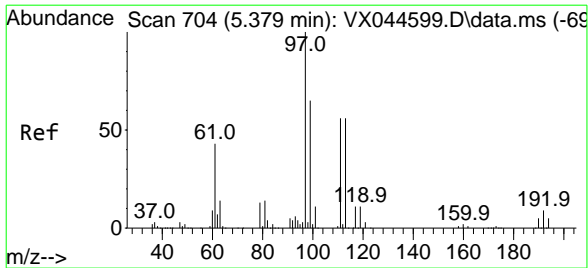
Tgt Ion: 65 Resp: 138770
 Ion Ratio Lower Upper
 65 100
 67 49.1 0.0 99.0



#34
 1,4-Difluorobenzene
 Concen: 50.000 ug/l
 RT: 6.757 min Scan# 930
 Delta R.T. 0.000 min
 Lab File: VX044628.D
 Acq: 08 Jan 2025 15:13

Tgt Ion: 114 Resp: 306197
 Ion Ratio Lower Upper
 114 100
 63 21.0 0.0 42.6
 88 16.4 0.0 32.6

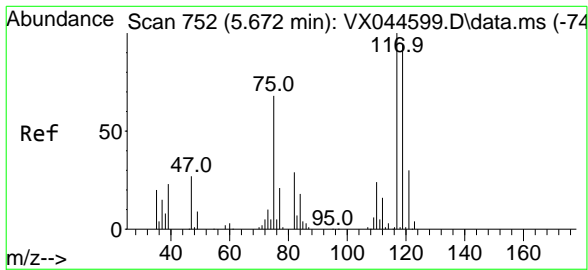
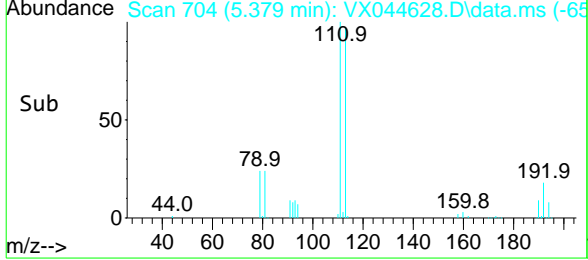
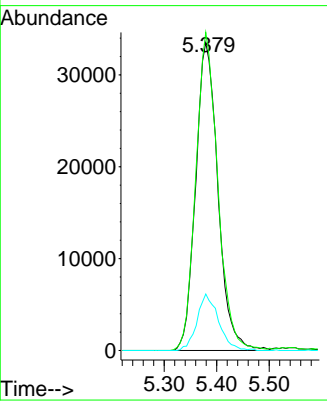
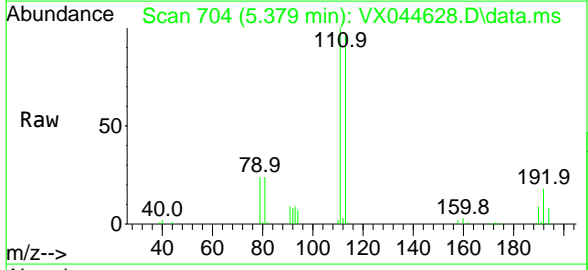




#35
 Dibromofluoromethane
 Concen: 47.065 ug/l
 RT: 5.379 min Scan# 704
 Delta R.T. 0.000 min
 Lab File: VX044628.D
 Acq: 08 Jan 2025 15:13

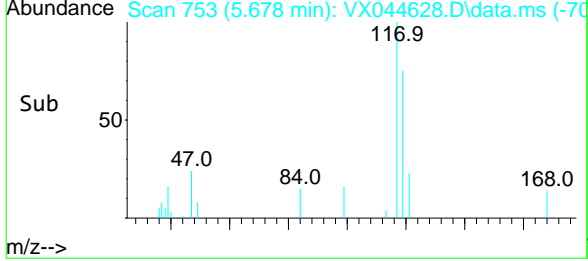
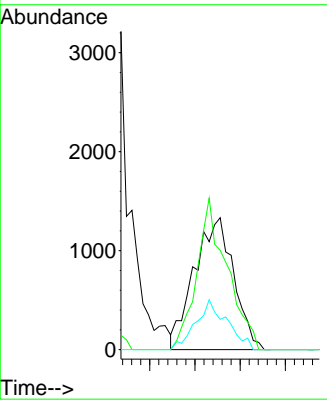
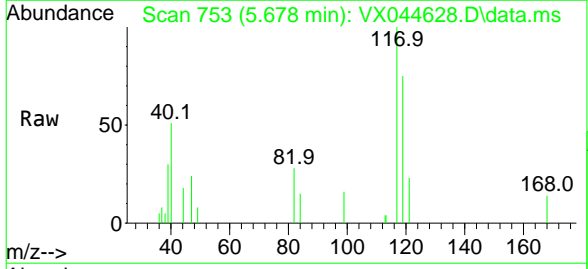
Instrument : MSVOA_X
 ClientSampleId : 28612

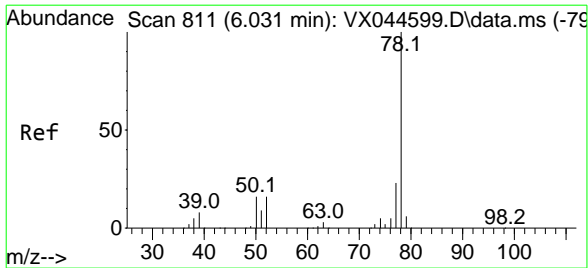
Tgt Ion	Resp	Lower	Upper
113	98820		
111	102.1	83.3	124.9
192	17.7	14.3	21.5



#38
 Carbon Tetrachloride
 Concen: 1.340 ug/l
 RT: 5.678 min Scan# 753
 Delta R.T. 0.006 min
 Lab File: VX044628.D
 Acq: 08 Jan 2025 15:13

Tgt Ion	Resp	Lower	Upper
117	4036		
119	75.3	74.5	111.7
121	23.0	24.1	36.1#

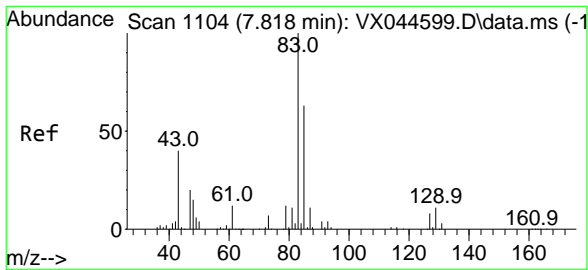
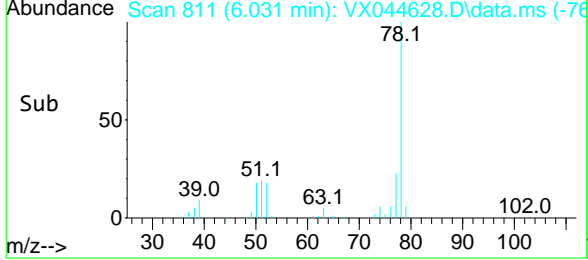
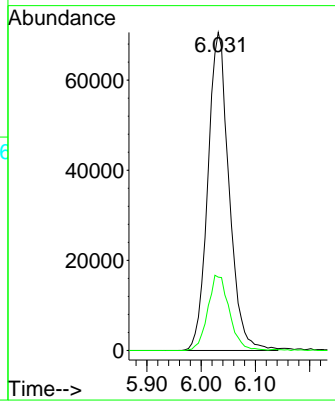
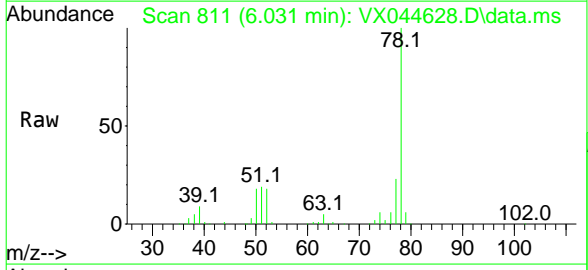




#40
Benzene
Concen: 22.438 ug/l
RT: 6.031 min Scan# 81
Delta R.T. 0.000 min
Lab File: VX044628.D
Acq: 08 Jan 2025 15:13

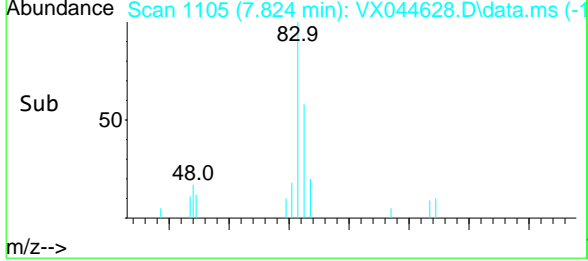
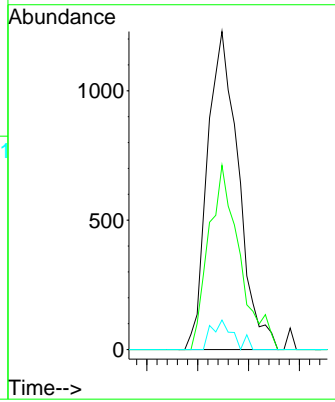
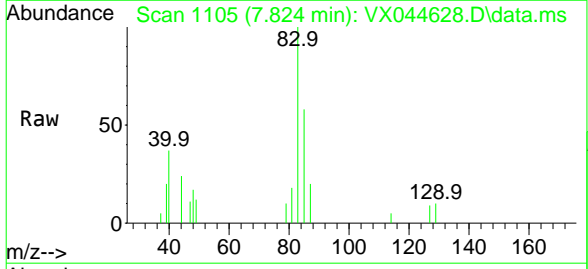
Instrument : MSVOA_X
ClientSampleId : 28612

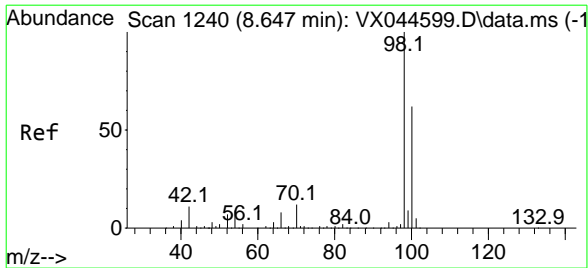
Tgt Ion: 78 Resp: 191812
Ion Ratio Lower Upper
78 100
77 23.1 18.8 28.2



#47
Bromodichloromethane
Concen: 0.883 ug/l
RT: 7.824 min Scan# 1105
Delta R.T. 0.006 min
Lab File: VX044628.D
Acq: 08 Jan 2025 15:13

Tgt Ion: 83 Resp: 2606
Ion Ratio Lower Upper
83 100
85 57.9 50.4 75.6
127 9.3 6.2 9.4

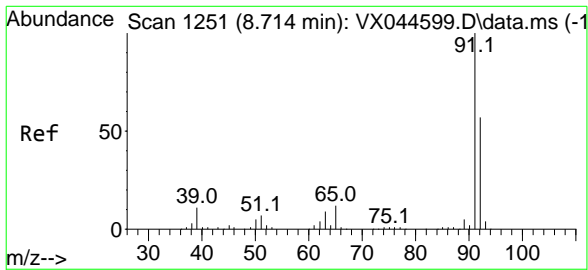
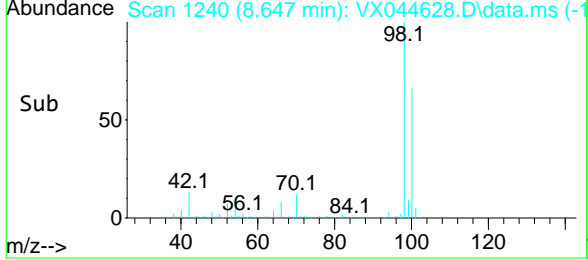
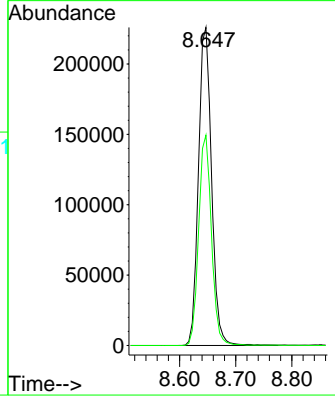
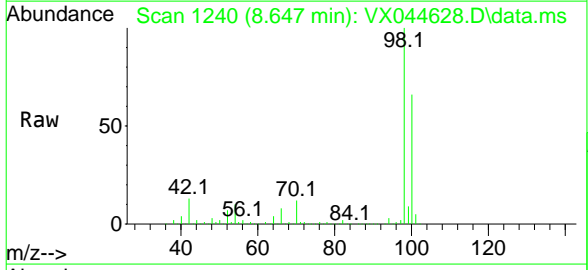




#50
 Toluene-d8
 Concen: 51.051 ug/l
 RT: 8.647 min Scan# 12
 Delta R.T. 0.000 min
 Lab File: VX044628.D
 Acq: 08 Jan 2025 15:13

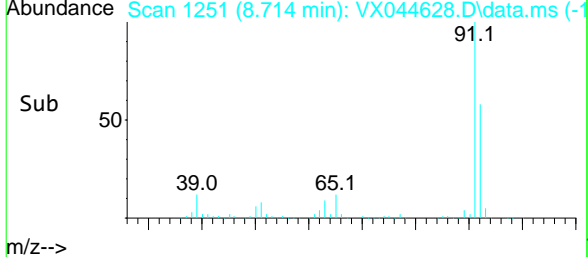
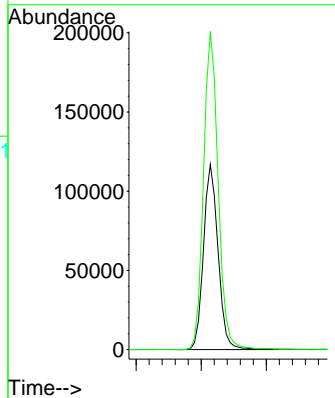
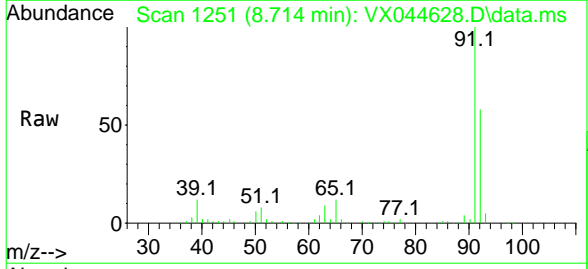
Instrument : MSVOA_X
 ClientSampleId : 28612

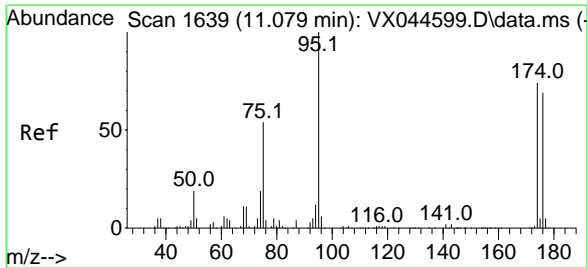
Tgt Ion: 98 Resp: 366134
 Ion Ratio Lower Upper
 98 100
 100 64.7 52.5 78.7



#52
 Toluene
 Concen: 35.202 ug/l
 RT: 8.714 min Scan# 1251
 Delta R.T. 0.000 min
 Lab File: VX044628.D
 Acq: 08 Jan 2025 15:13

Tgt Ion: 92 Resp: 181567
 Ion Ratio Lower Upper
 92 100
 91 173.1 140.6 210.8

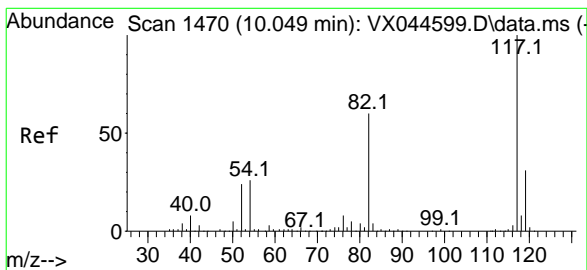
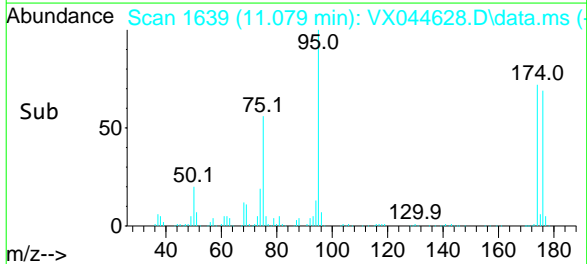
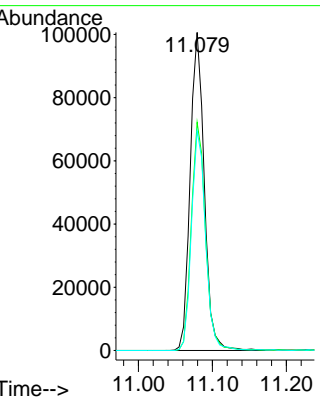
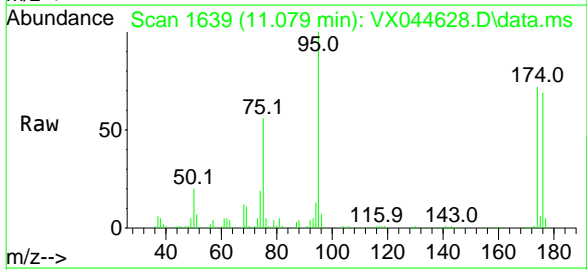




#62
 4-Bromofluorobenzene
 Concen: 52.646 ug/l
 RT: 11.079 min Scan# 1639
 Delta R.T. 0.000 min
 Lab File: VX044628.D
 Acq: 08 Jan 2025 15:13

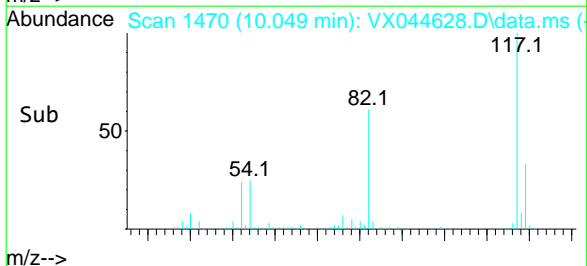
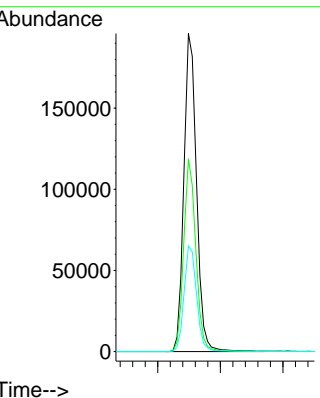
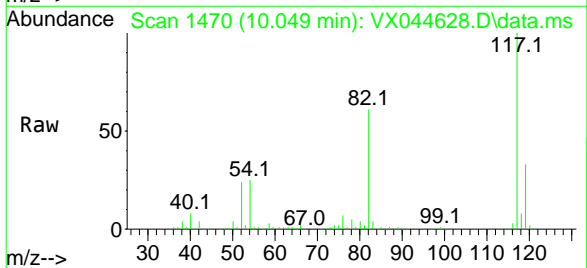
Instrument : MSVOA_X
 ClientSampleId : 28612

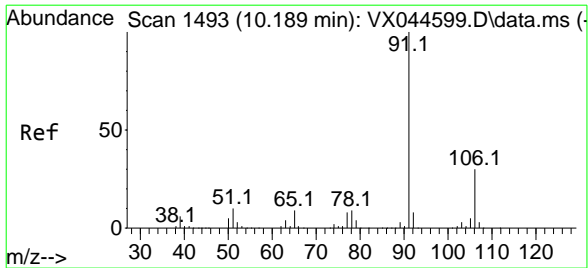
Tgt Ion:	Resp:	Lower:	Upper:
95	133269	100	
174	71.9	0.0	148.8
176	68.9	0.0	139.8



#63
 Chlorobenzene-d5
 Concen: 50.000 ug/l
 RT: 10.049 min Scan# 1470
 Delta R.T. 0.000 min
 Lab File: VX044628.D
 Acq: 08 Jan 2025 15:13

Tgt Ion:	Resp:	Lower:	Upper:
117	274369	100	
82	60.6	47.8	71.6
119	33.2	25.0	37.6

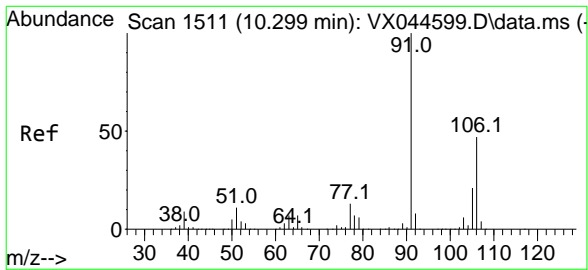
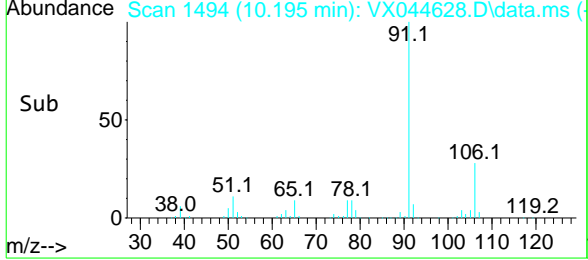
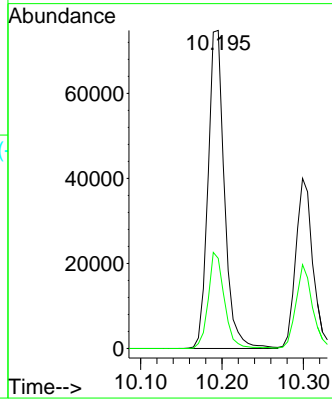
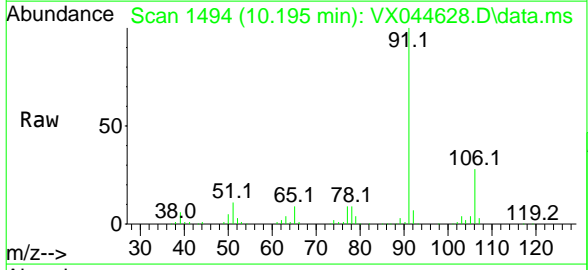




#67
 Ethyl Benzene
 Concen: 10.476 ug/l
 RT: 10.195 min Scan# 1494
 Delta R.T. 0.006 min
 Lab File: VX044628.D
 Acq: 08 Jan 2025 15:13

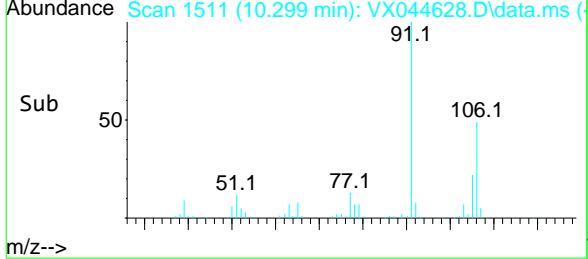
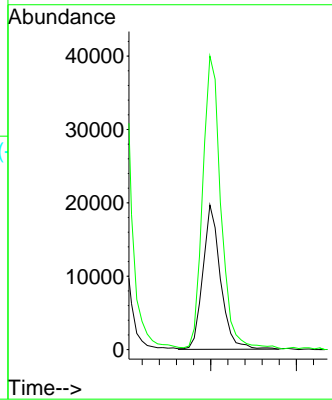
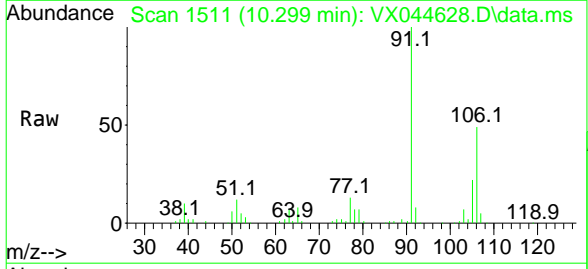
Instrument : MSVOA_X
 ClientSampleId : 28612

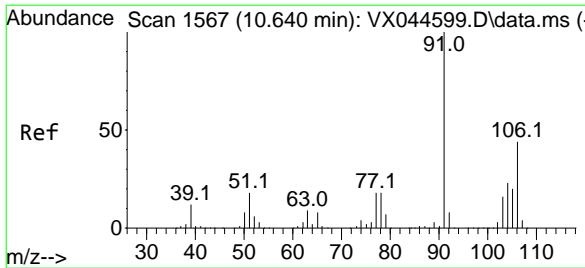
Tgt Ion: 91 Resp: 104752
 Ion Ratio Lower Upper
 91 100
 106 28.3 23.8 35.8



#68
 m/p-Xylenes
 Concen: 7.681 ug/l
 RT: 10.299 min Scan# 1511
 Delta R.T. 0.000 min
 Lab File: VX044628.D
 Acq: 08 Jan 2025 15:13

Tgt Ion:106 Resp: 28223
 Ion Ratio Lower Upper
 106 100
 91 209.6 170.4 255.6

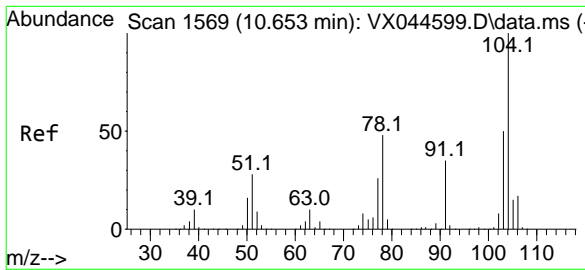
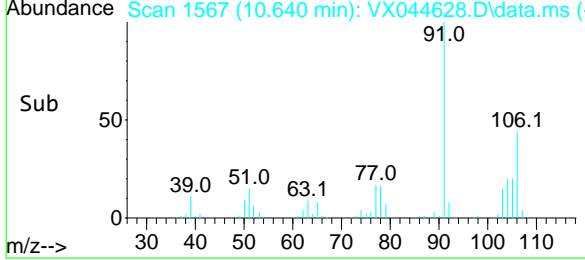
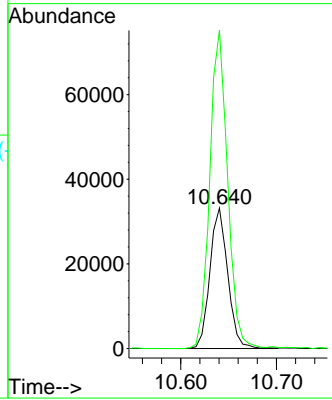
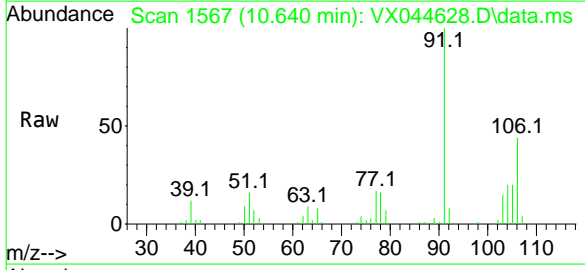




#69
 o-Xylene
 Concen: 11.591 ug/l
 RT: 10.640 min Scan# 1567
 Delta R.T. 0.000 min
 Lab File: VX044628.D
 Acq: 08 Jan 2025 15:13

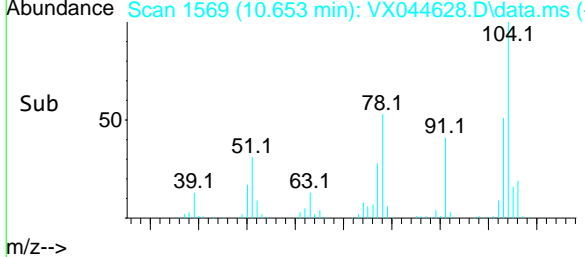
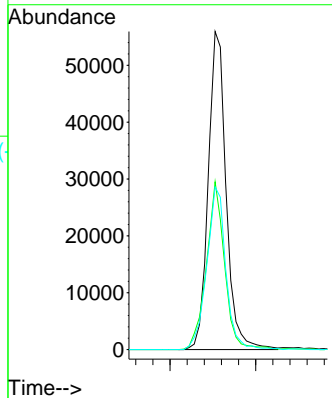
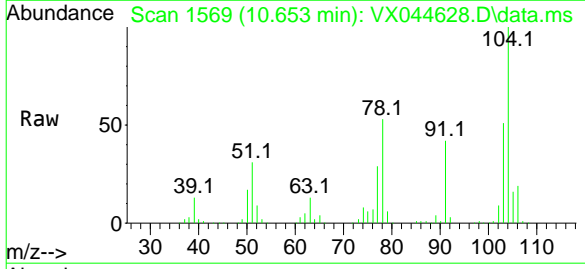
Instrument : MSVOA_X
 ClientSampleId : 28612

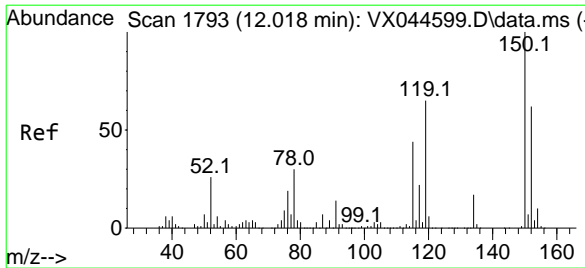
Tgt Ion:106 Resp: 42989
 Ion Ratio Lower Upper
 106 100
 91 225.9 112.3 336.8



#70
 Styrene
 Concen: 13.696 ug/l
 RT: 10.653 min Scan# 1569
 Delta R.T. 0.000 min
 Lab File: VX044628.D
 Acq: 08 Jan 2025 15:13

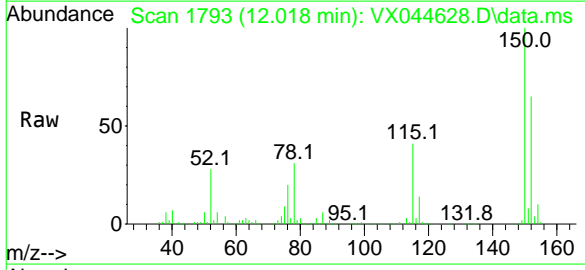
Tgt Ion:104 Resp: 81248
 Ion Ratio Lower Upper
 104 100
 78 53.5 44.0 66.0
 103 54.5 43.8 65.6



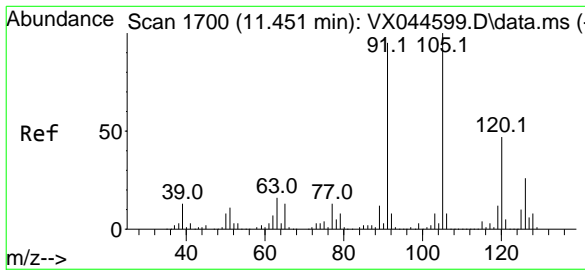
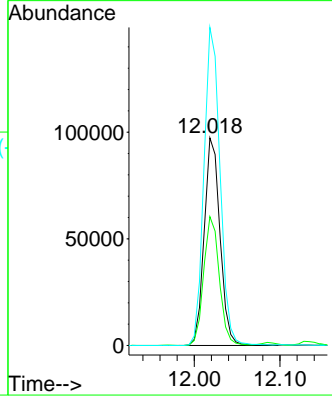
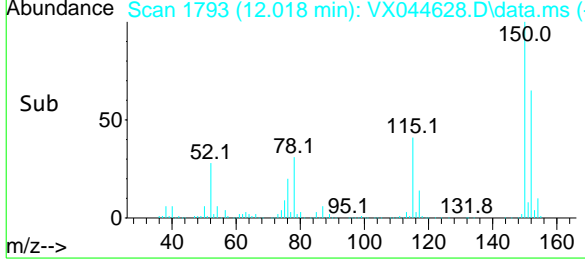


#72
 1,4-Dichlorobenzene-d4
 Concen: 50.000 ug/l
 RT: 12.018 min Scan# 1793
 Delta R.T. 0.000 min
 Lab File: VX044628.D
 Acq: 08 Jan 2025 15:13

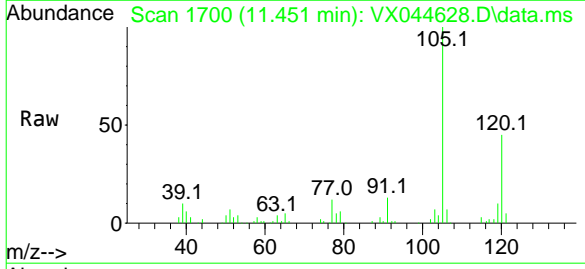
Instrument : MSVOA_X
 ClientSampleId : 28612



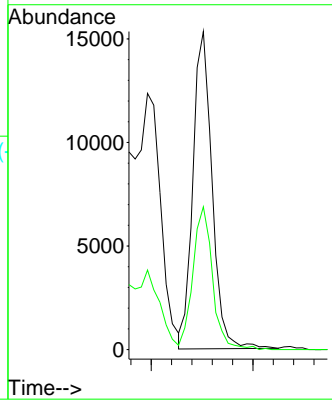
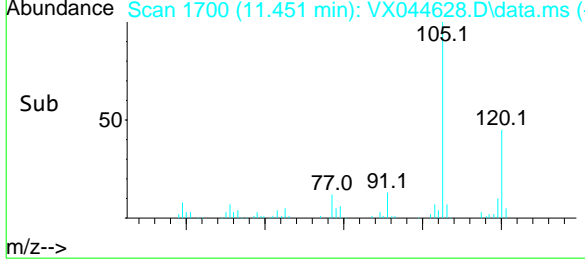
Tgt Ion:152 Resp: 124701
 Ion Ratio Lower Upper
 152 100
 115 61.5 44.4 133.1
 150 156.0 0.0 355.0

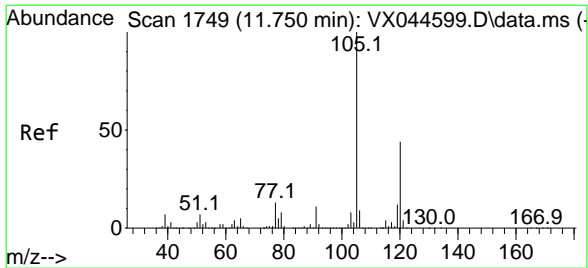


#80
 1,3,5-Trimethylbenzene
 Concen: 2.618 ug/l
 RT: 11.451 min Scan# 1700
 Delta R.T. 0.000 min
 Lab File: VX044628.D
 Acq: 08 Jan 2025 15:13



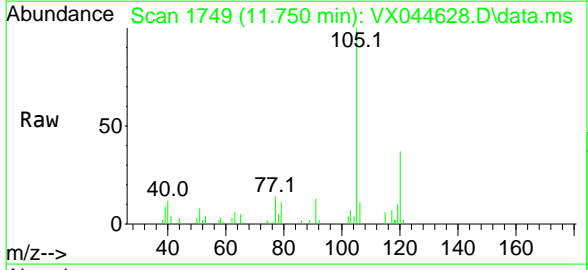
Tgt Ion:105 Resp: 20052
 Ion Ratio Lower Upper
 105 100
 120 46.2 23.5 70.5





#84
 1,2,4-Trimethylbenzene
 Concen: 0.966 ug/l
 RT: 11.750 min Scan# 17
 Delta R.T. 0.000 min
 Lab File: VX044628.D
 Acq: 08 Jan 2025 15:13

Instrument : MSVOA_X
 ClientSampleId : 28612



Tgt Ion: 105 Resp: 7437

Ion	Ratio	Lower	Upper
105	100		
120	43.0	21.9	65.7

