

Data Path : Z:\VOASRV\HPCHEM1\MSVOA X\DATA\VX010919\  
 Data File : VX006963.D  
 Acq On : 09 Jan 2019 14:20  
 Operator : JC/MD  
 Sample : K1098-01  
 Misc : 5.0mL/MSVOA X/WATER  
 ALS Vial : 9 Sample Multiplier: 1

Instrument :  
 MSVOA\_X  
 ClientSampled :  
 S32-0650

Quant Time: Jan 10 00:55:37 2019  
 Quant Method : Z:\VOASRV\HPCHEM1\MSVOA\_X\METHOD\82X010819W.M  
 Quant Title : SW846 8260  
 QLast Update : Tue Jan 08 14:06:59 2019  
 Response via : Initial Calibration

Internal Standards	R.T.	QIon	Response	Conc	Units	Dev(Min)
1) Pentafluorobenzene	5.67	168	659714	50.00	ug/l	0.00
34) 1,4-Difluorobenzene	6.86	114	1001018	50.00	ug/l	0.00
63) Chlorobenzene-d5	10.11	117	911467	50.00	ug/l	0.00
72) 1,4-Dichlorobenzene-d4	12.08	152	438981	50.00	ug/l	0.00

## System Monitoring Compounds

33) 1,2-Dichloroethane-d4	6.07	65	342226	49.64	ug/l	0.00
Spiked Amount	50.000		Recovery	=	99.28%	
35) Dibromofluoromethane	5.50	113	311985	48.67	ug/l	0.00
Spiked Amount	50.000		Recovery	=	97.34%	
50) Toluene-d8	8.71	98	1181167	50.34	ug/l	0.00
Spiked Amount	50.000		Recovery	=	100.68%	
62) 4-Bromofluorobenzene	11.13	95	409953	50.12	ug/l	0.00
Spiked Amount	50.000		Recovery	=	100.24%	

## Target Compounds

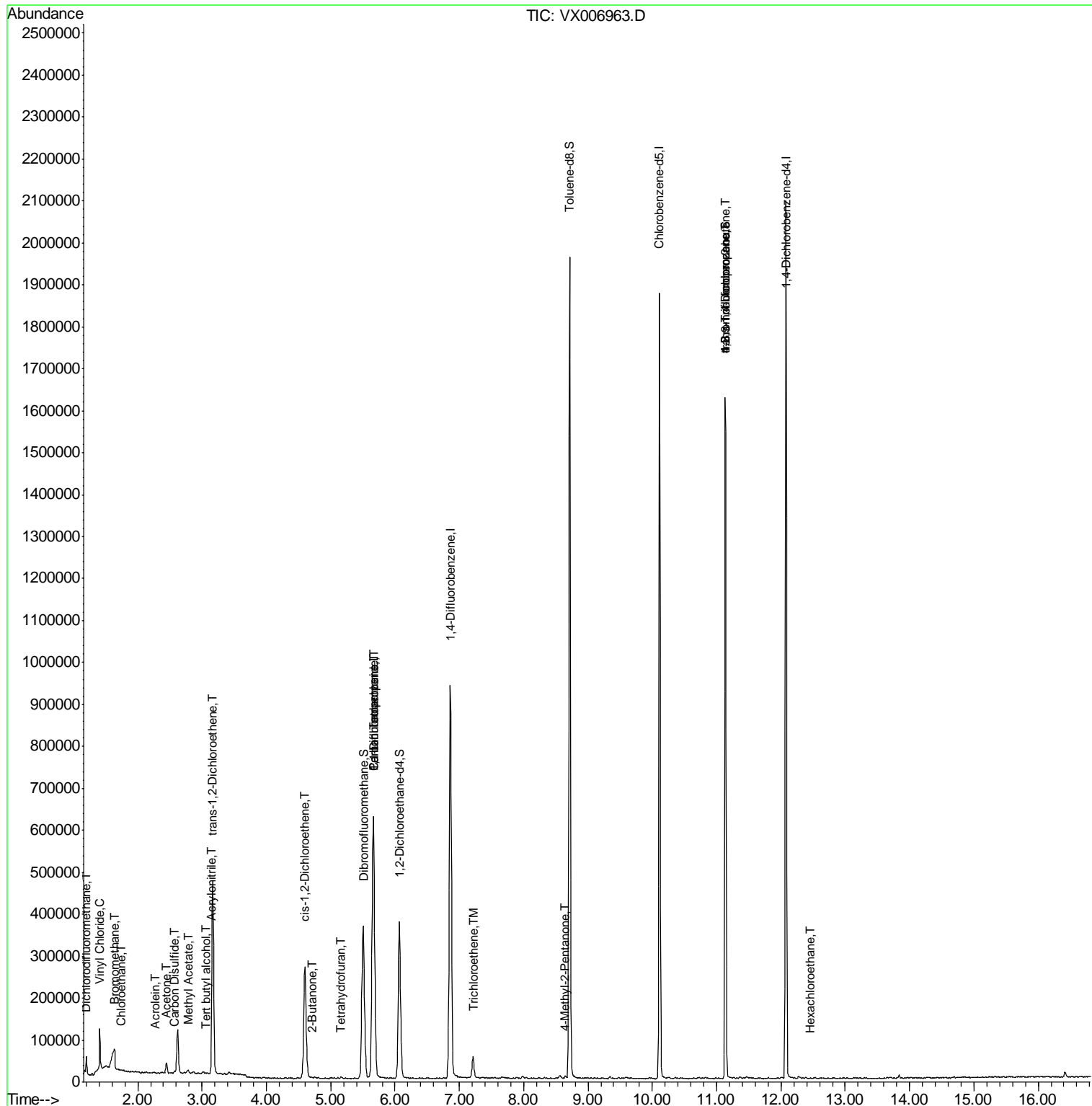
					Qvalue
2) Dichlorodifluoromethane	1.20	85	22249	4.107 ug/l	94
4) Vinyl Chloride	1.41	62	59698	8.800 ug/l	100
5) Bromomethane	1.64	94	1662	0.229 ug/l	91
6) Chloroethane	1.75	64	1442	0.304 ug/l	100
11) Tert butyl alcohol	3.06	59	2542	1.563 ug/l	96
13) Acrolein	2.28	56	154	3.301 ug/l #	1
15) Acrylonitrile	3.15	53	1158	0.310 ug/l #	30
16) Acetone	2.45	43	28577	8.384 ug/l	96
17) Carbon Disulfide	2.57	76	6712	0.430 ug/l #	93
18) Methyl Acetate	2.78	43	12038	1.220 ug/l	94
20) Methylene Chloride	2.85	84	2102	Below Cal #	71
21) trans-1,2-Dichloroethene	3.17	96	189355	28.024 ug/l	96
25) 2-Butanone	4.71	43	4965	1.018 ug/l	90
27) cis-1,2-Dichloroethene	4.60	96	177392	23.801 ug/l	93
29) Tetrahydrofuran	5.17	42	1434	0.452 ug/l #	53
36) 1,1-Dichloropropene	5.67	75	40005	4.597 ug/l #	49
38) Carbon Tetrachloride	5.67	117	59128	6.753 ug/l #	14
44) Trichloroethene	7.21	130	21235	2.669 ug/l	83
49) 1,4-Dioxane	7.76	88	55	Below Cal #	1
51) 4-Methyl-2-Pentanone	8.65	43	3936	0.416 ug/l	95
76) 1,2,3-Trichloropropane	11.13	75	198518	22.316 ug/l #	40
81) trans-1,4-Dichloro-2-buten	11.13	75	198518	66.034 ug/l #	10
90) Hexachloroethane	12.46	117	114	2.933 ug/l	79

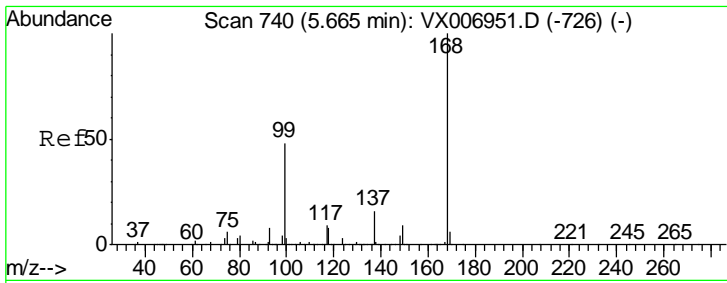
(#) = qualifier out of range (m) = manual integration (+) = signals summed

Data Path : Z:\VOASRV\HPCHEM1\MSVOA X\DATA\VX010919\  
 Data File : VX006963.D  
 Acq On : 09 Jan 2019 14:20  
 Operator : JC/MD  
 Sample : K1098-01  
 Misc : 5.0mL/MSVOA X/WATER  
 ALS Vial : 9 Sample Multiplier: 1

Instrument :  
 MSVOA\_X  
 Client Sampled :  
 S32-0650

Quant Time: Jan 10 00:55:37 2019  
 Quant Method : Z:\VOASRV\HPCHEM1\MSVOA\_X\METHOD\82X010819W.M  
 Quant Title : SW846 8260  
 QLast Update : Tue Jan 08 14:06:59 2019  
 Response via : Initial Calibration

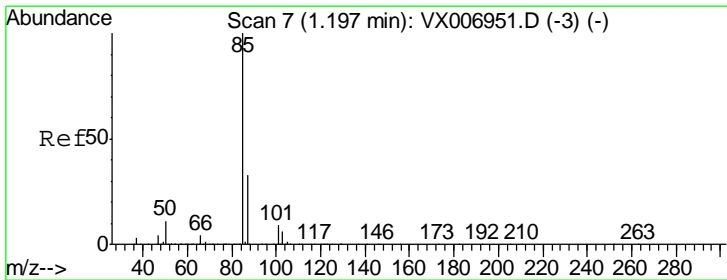
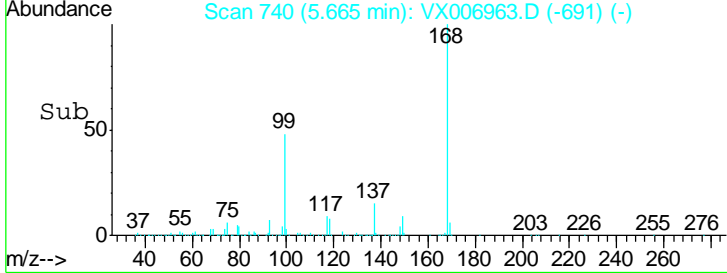
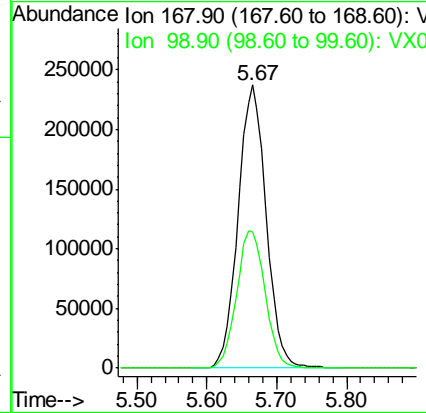
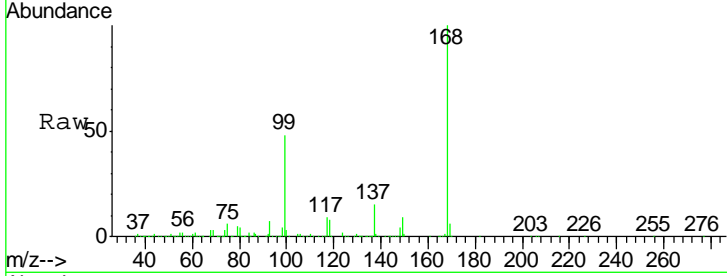




#1  
 Pentafluorobenzene  
 Concen: 50.000 ug/l  
 RT: 5.67 min Scan# 740  
 Delta R.T. -0.00 min  
 Lab File: VX006963.D  
 Acq: 09 Jan 2019 14:20

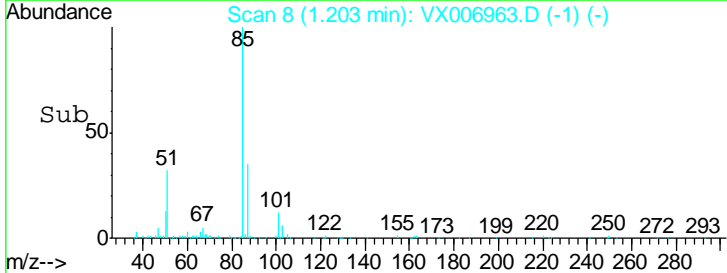
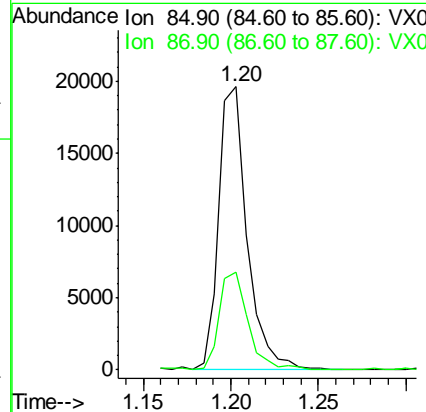
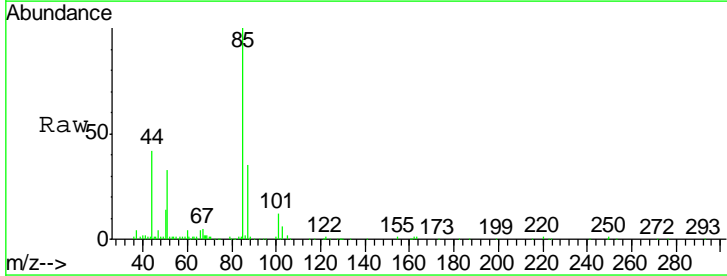
Instrument : MSVOA\_X  
 ClientSampleID : S32-0650

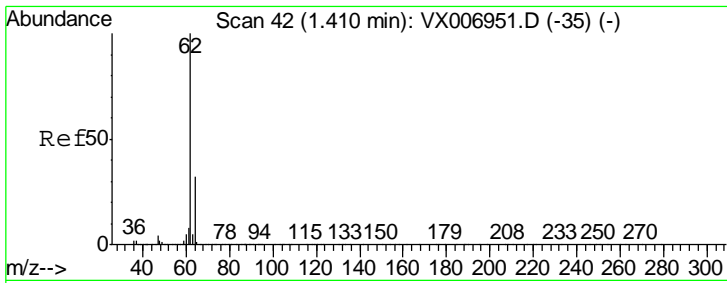
Tgt Ion	Resp	Lower	Upper
168	100		
99	48.2	41.8	62.8



#2  
 Dichlorodifluoromethane  
 Concen: 4.107 ug/l  
 RT: 1.20 min Scan# 8  
 Delta R.T. 0.01 min  
 Lab File: VX006963.D  
 Acq: 09 Jan 2019 14:20

Tgt Ion	Resp	Lower	Upper
85	100		
87	34.8	15.9	47.6

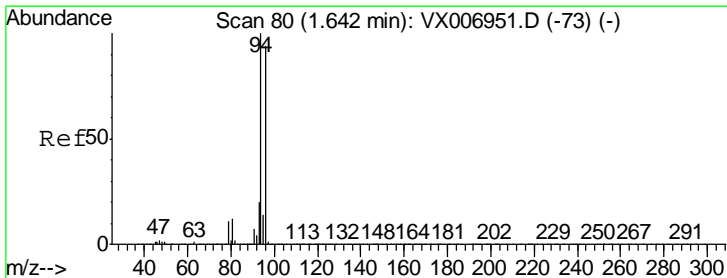
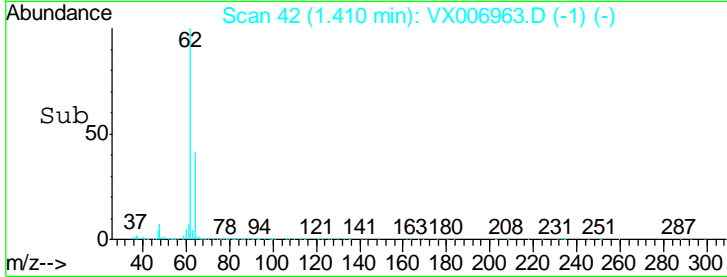
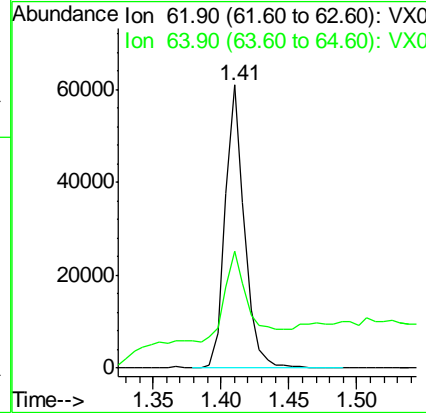
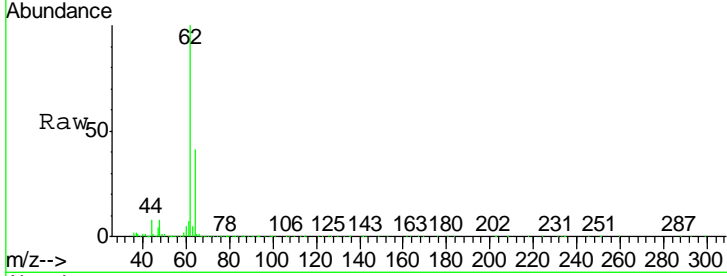




#4  
 Vinyl Chloride  
 Concen: 8.800 ug/l  
 RT: 1.41 min Scan# 42  
 Delta R.T. -0.00 min  
 Lab File: VX006963.D  
 Acq: 09 Jan 2019 14:20

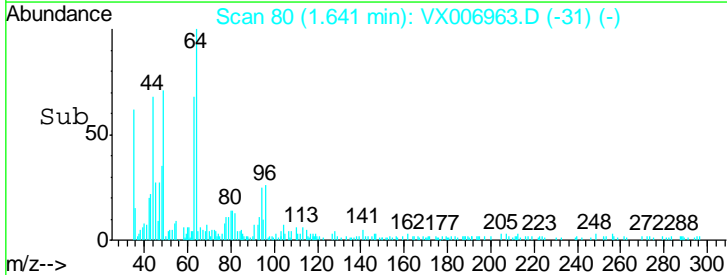
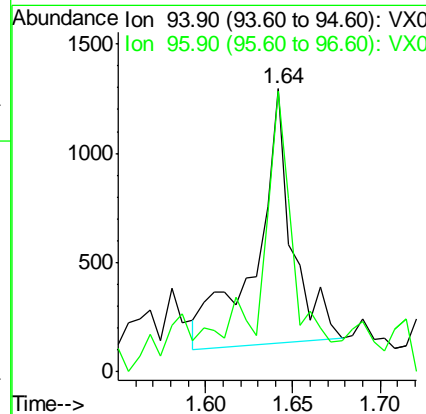
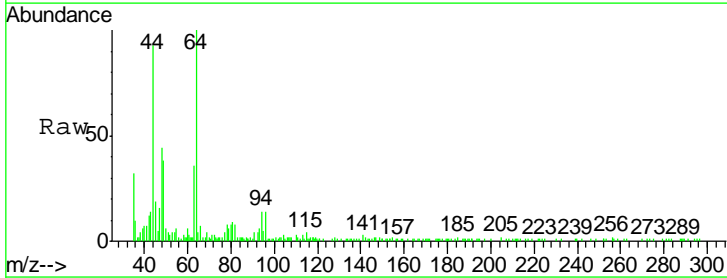
Instrument :  
 MSVOA\_X  
 ClientSampled :  
 S32-0650

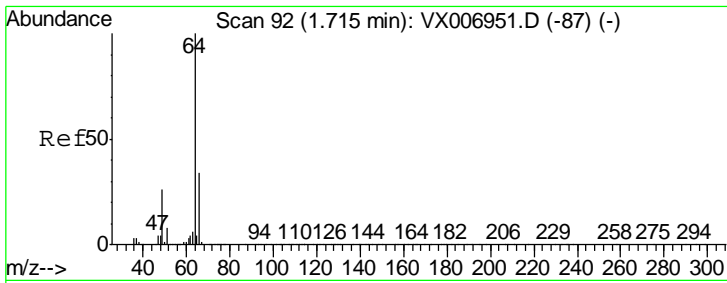
Tgt Ion: 62 Resp: 59698  
 Ion Ratio Lower Upper  
 62 100  
 64 31.7 25.1 37.7



#5  
 Bromomethane  
 Concen: 0.229 ug/l  
 RT: 1.64 min Scan# 80  
 Delta R.T. -0.00 min  
 Lab File: VX006963.D  
 Acq: 09 Jan 2019 14:20

Tgt Ion: 94 Resp: 1662  
 Ion Ratio Lower Upper  
 94 100  
 96 99.9 73.4 110.2

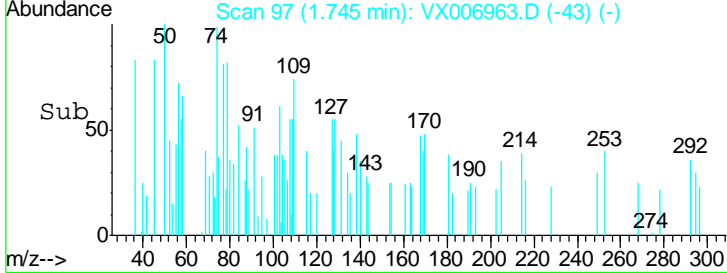
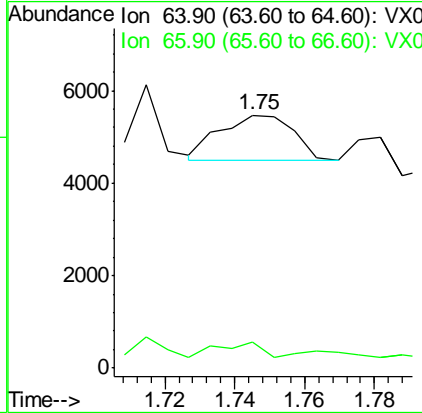
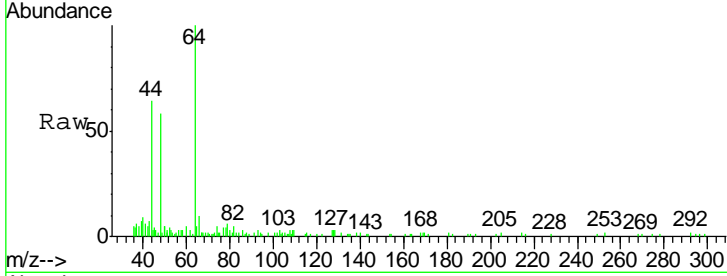




#6  
 Chloroethane  
 Concen: 0.304 ug/l  
 RT: 1.75 min Scan# 97  
 Delta R.T. 0.03 min  
 Lab File: VX006963.D  
 Acq: 09 Jan 2019 14:20

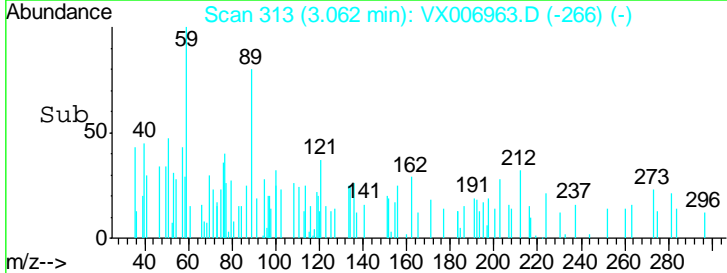
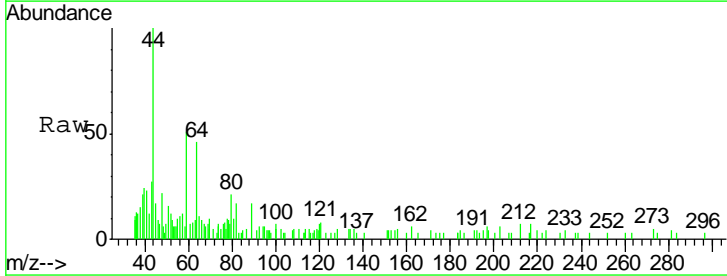
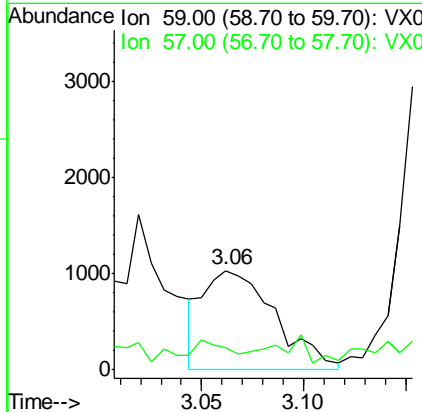
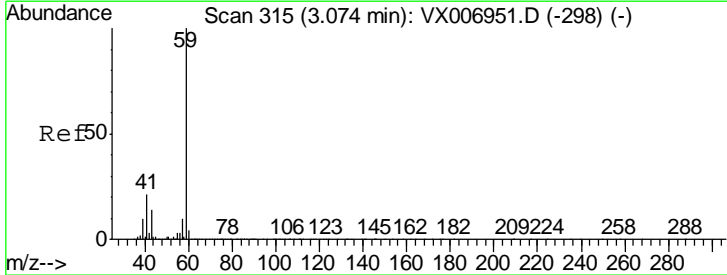
**Instrument :**  
 MSVOA\_X  
**ClientSampled :**  
 S32-0650

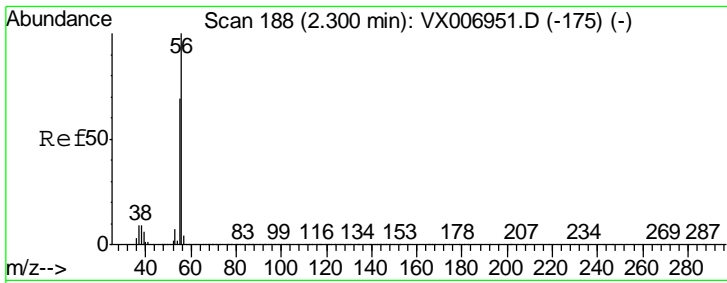
Tgt Ion	Resp	Lower	Upper
64	100		
66	32.9	26.4	39.6



#11  
 Tert butyl alcohol  
 Concen: 1.563 ug/l  
 RT: 3.06 min Scan# 313  
 Delta R.T. -0.01 min  
 Lab File: VX006963.D  
 Acq: 09 Jan 2019 14:20

Tgt Ion	Resp	Lower	Upper
59	100		
57	12.0	8.5	12.7

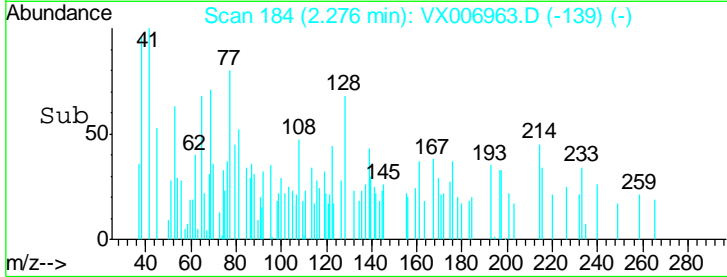
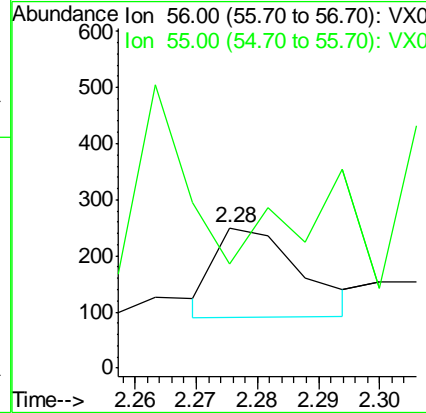
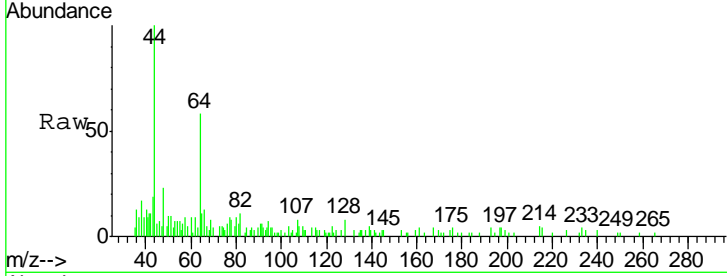




#13  
 Acrolein  
 Concen: 3.301 ug/l  
 RT: 2.28 min Scan# 184  
 Delta R.T. -0.02 min  
 Lab File: VX006963.D  
 Acq: 09 Jan 2019 14:20

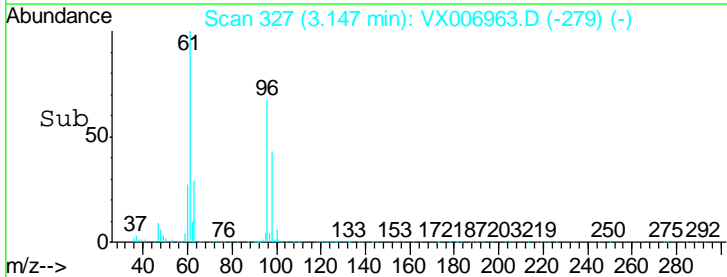
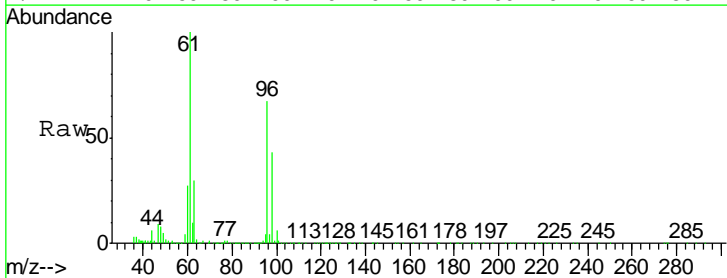
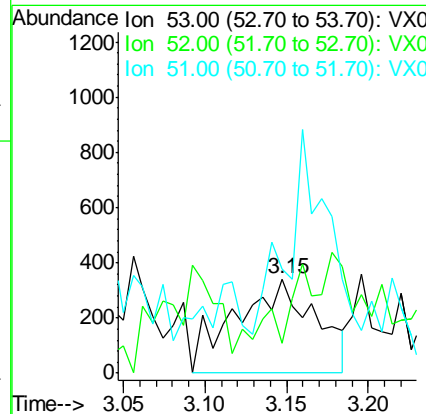
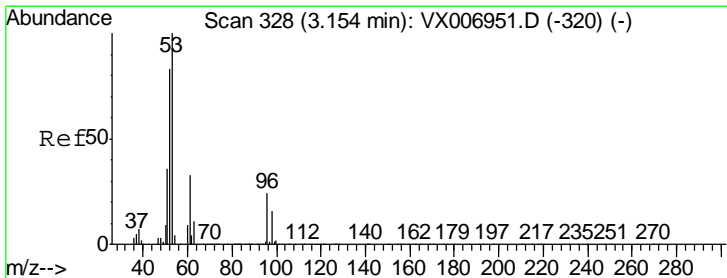
Instrument :  
 MSVOA\_X  
 ClientSampled :  
 S32-0650

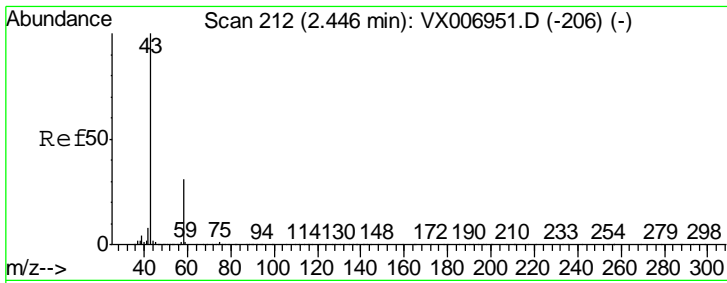
Tgt Ion	Resp	Lower	Upper
56	100		
55	223.4	58.2	87.4#



#15  
 Acrylonitrile  
 Concen: 0.310 ug/l  
 RT: 3.15 min Scan# 327  
 Delta R.T. -0.01 min  
 Lab File: VX006963.D  
 Acq: 09 Jan 2019 14:20

Tgt Ion	Resp	Lower	Upper
53	100		
52	38.8	66.0	99.0#
51	105.4	28.6	42.8#

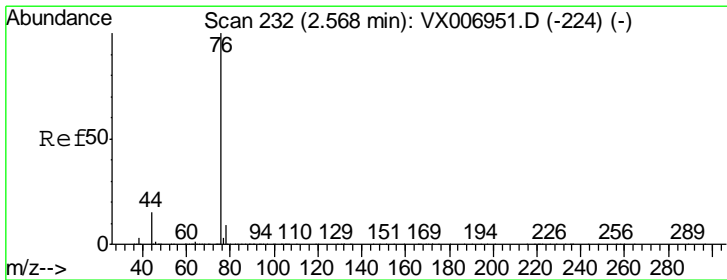
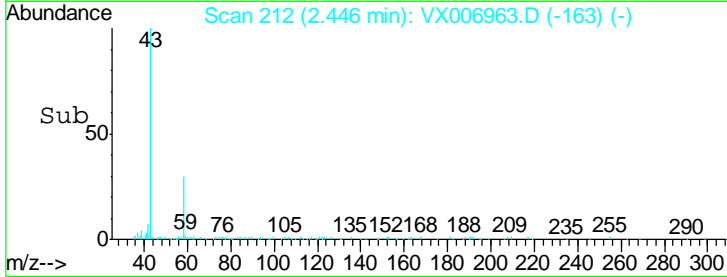
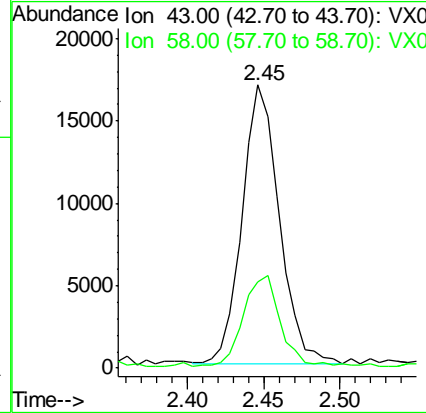
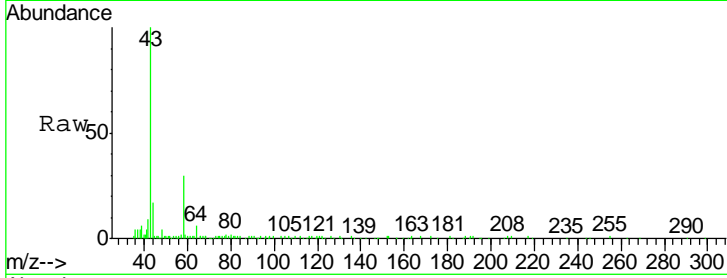




#16  
 Acetone  
 Concen: 8.384 ug/l  
 RT: 2.45 min Scan# 212  
 Delta R.T. -0.00 min  
 Lab File: VX006963.D  
 Acq: 09 Jan 2019 14:20

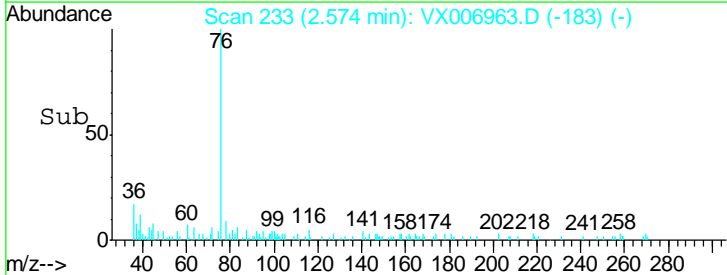
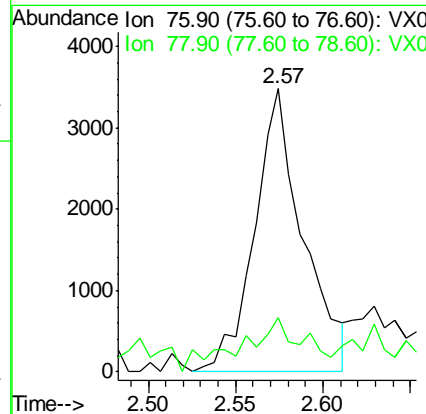
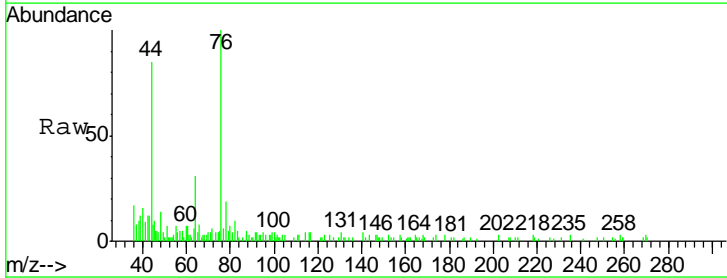
Instrument :  
 MSVOA\_X  
 ClientSampled :  
 S32-0650

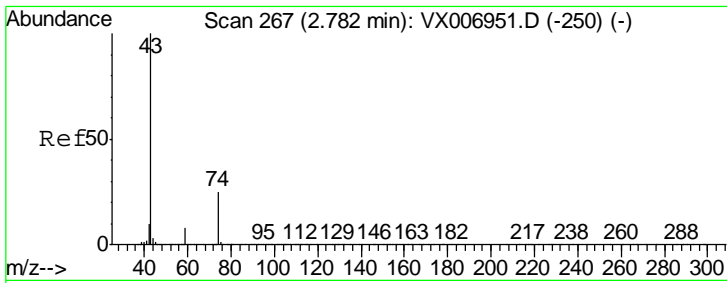
Tgt Ion: 43 Resp: 28577  
 Ion Ratio Lower Upper  
 43 100  
 58 29.2 25.0 37.6



#17  
 Carbon Disulfide  
 Concen: 0.430 ug/l  
 RT: 2.57 min Scan# 233  
 Delta R.T. 0.01 min  
 Lab File: VX006963.D  
 Acq: 09 Jan 2019 14:20

Tgt Ion: 76 Resp: 6712  
 Ion Ratio Lower Upper  
 76 100  
 78 11.3 7.0 10.6#

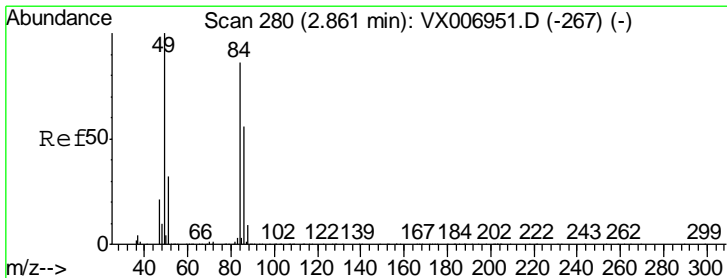
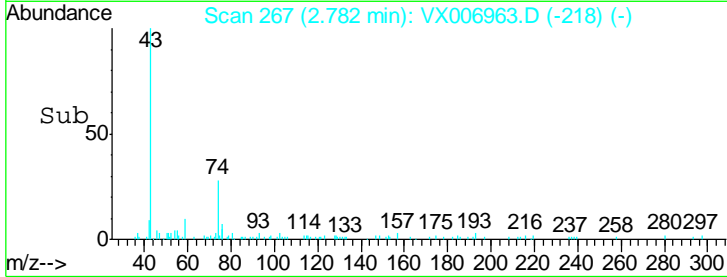
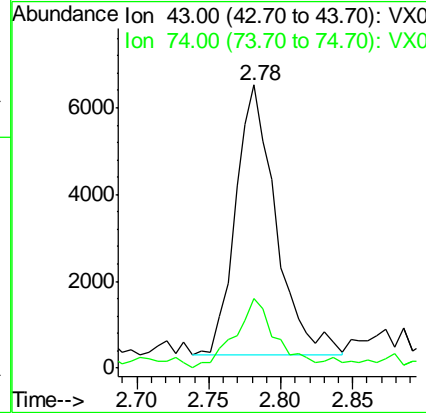
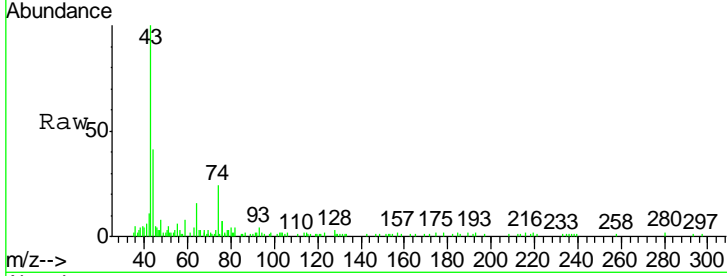




#18  
Methyl Acetate  
Concen: 1.220 ug/l  
RT: 2.78 min Scan# 267  
Delta R.T. -0.00 min  
Lab File: VX006963.D  
Acq: 09 Jan 2019 14:20

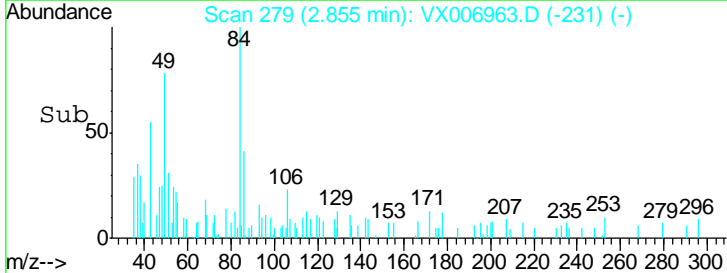
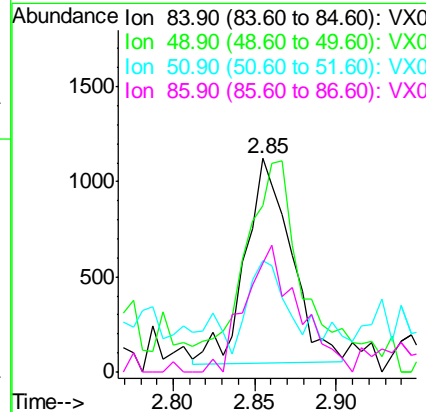
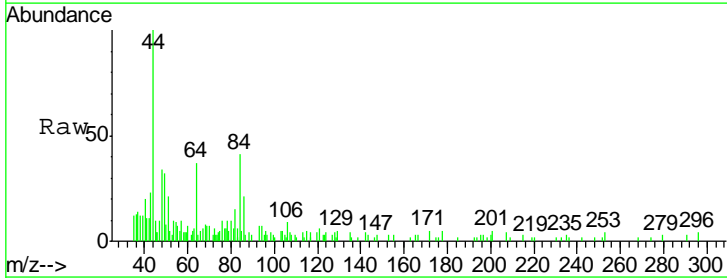
Instrument :  
MSVOA\_X  
ClientSampled :  
S32-0650

Tgt Ion	Resp	Lower	Upper
43	12038		
74	26.0	18.6	28.0

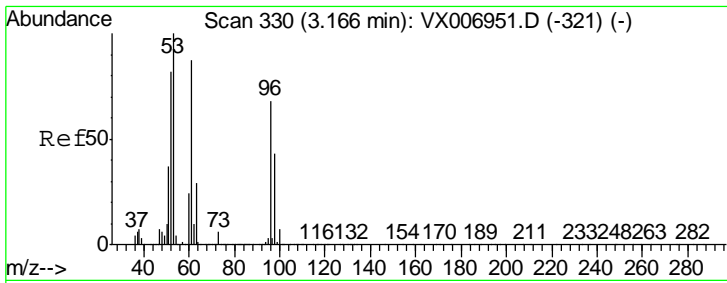


#20  
Methylene Chloride  
Concen: Below Cal  
RT: 2.85 min Scan# 279  
Delta R.T. -0.01 min  
Lab File: VX006963.D  
Acq: 09 Jan 2019 14:20

Tgt Ion	Resp	Lower	Upper
84	2102		
49	70.5	91.8	137.6#
51	49.9	28.5	42.7#
86	54.0	50.2	75.2



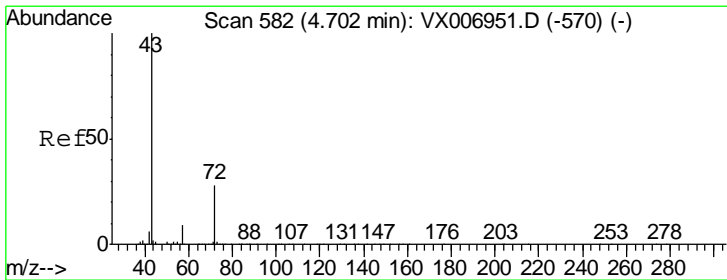
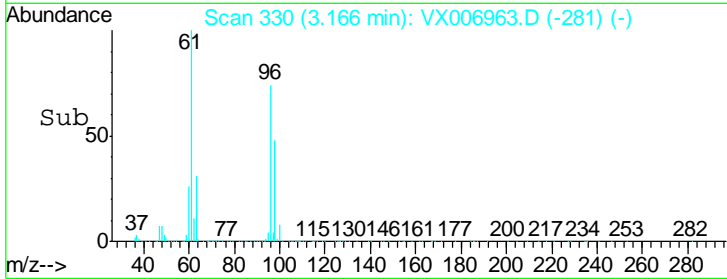
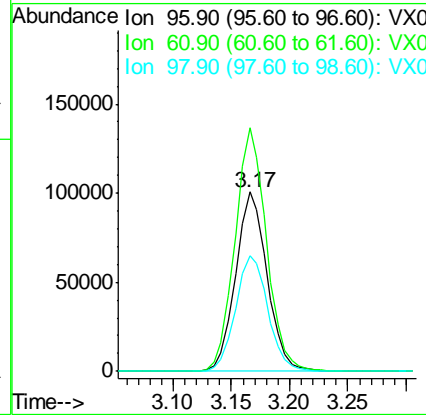
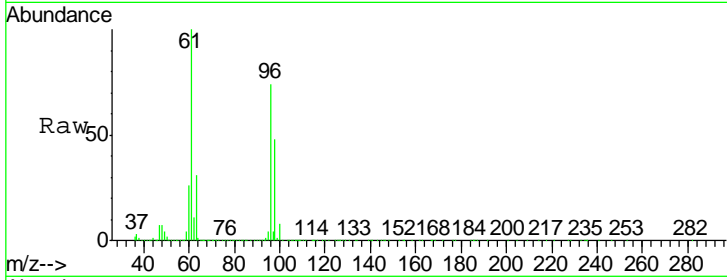




#21  
 trans-1,2-Dichloroethene  
 Concen: 28.024 ug/l  
 RT: 3.17 min Scan# 330  
 Delta R.T. -0.00 min  
 Lab File: VX006963.D  
 Acq: 09 Jan 2019 14:20

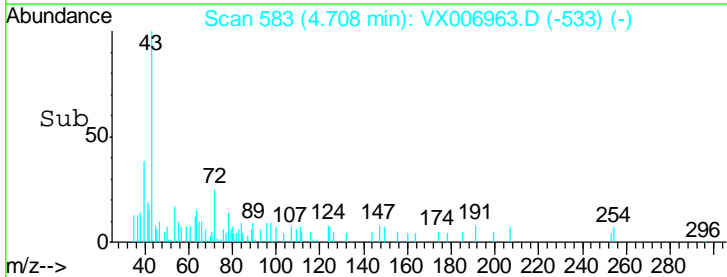
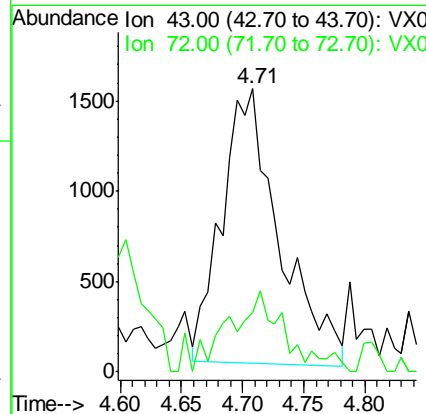
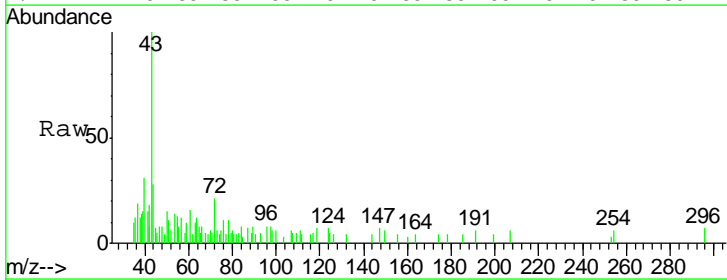
**Instrument :**  
 MSVOA\_X  
**ClientSampled :**  
 S32-0650

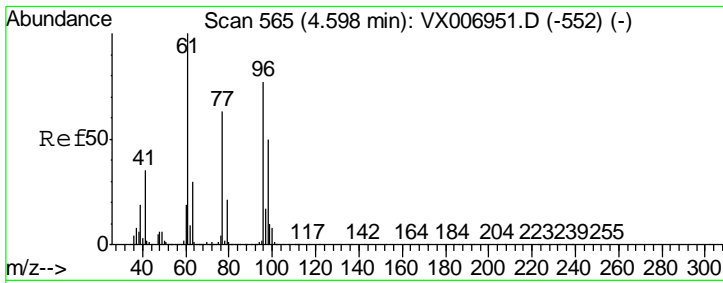
Tgt Ion	Resp	Lower	Upper
96	189355		
61	135.6	103.7	155.5
98	64.6	51.0	76.6



#25  
 2-Butanone  
 Concen: 1.018 ug/l  
 RT: 4.71 min Scan# 583  
 Delta R.T. 0.01 min  
 Lab File: VX006963.D  
 Acq: 09 Jan 2019 14:20

Tgt Ion	Resp	Lower	Upper
43	4965		
72	22.8	22.4	33.6

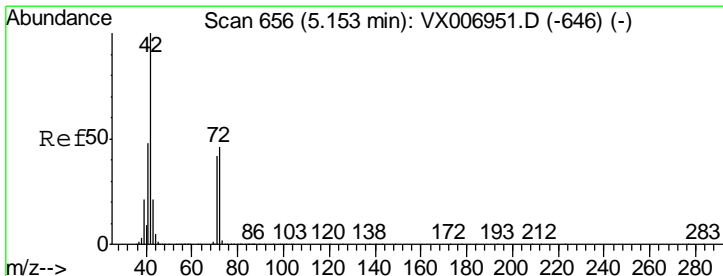
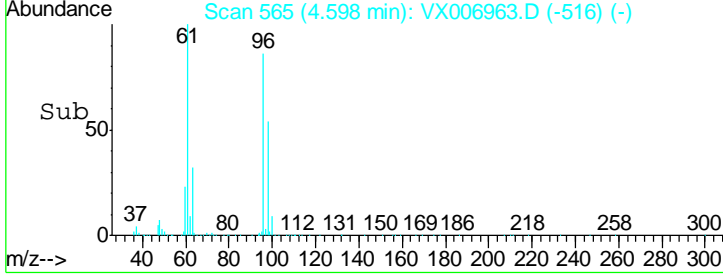
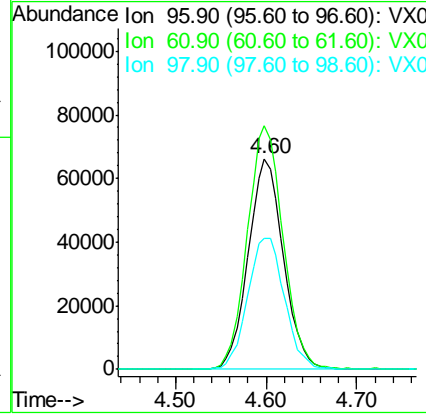
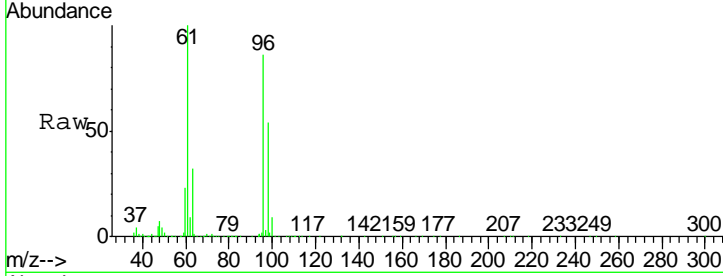




#27  
 cis-1,2-Dichloroethene  
 Concen: 23.801 ug/l  
 RT: 4.60 min Scan# 565  
 Delta R.T. -0.00 min  
 Lab File: VX006963.D  
 Acq: 09 Jan 2019 14:20

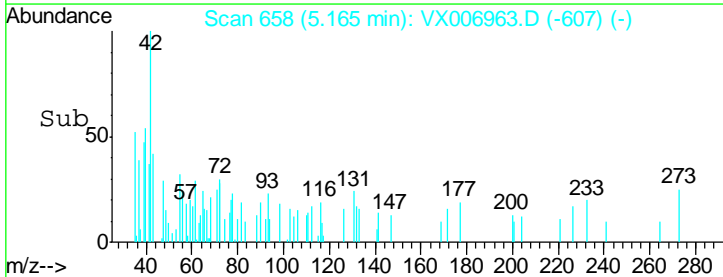
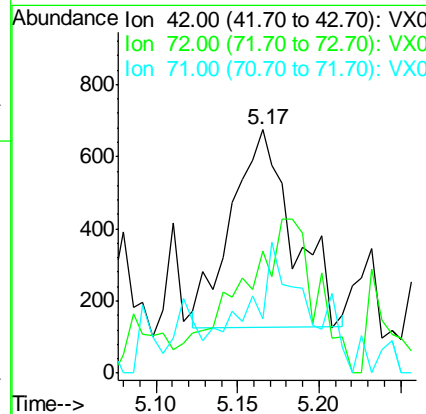
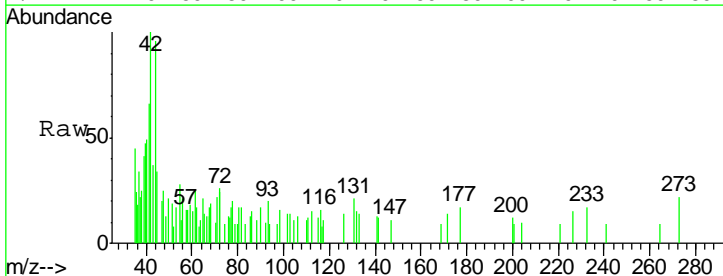
Instrument :  
 MSVOA\_X  
 ClientSampled :  
 S32-0650

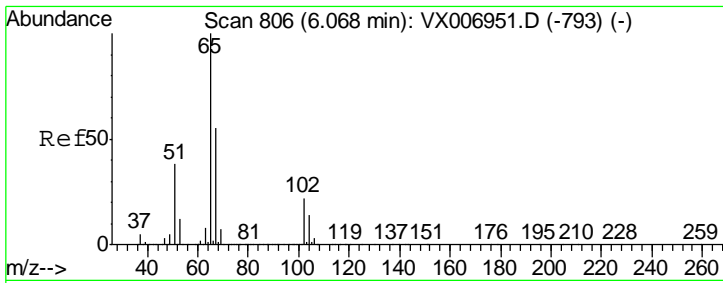
Tgt Ion	Resp	Lower	Upper
96	177392		
61	117.2	0.0	258.6
98	65.6	0.0	132.0



#29  
 Tetrahydrofuran  
 Concen: 0.452 ug/l  
 RT: 5.17 min Scan# 658  
 Delta R.T. 0.01 min  
 Lab File: VX006963.D  
 Acq: 09 Jan 2019 14:20

Tgt Ion	Resp	Lower	Upper
42	1434		
72	97.7	38.9	58.3#
71	58.8	36.2	54.4#

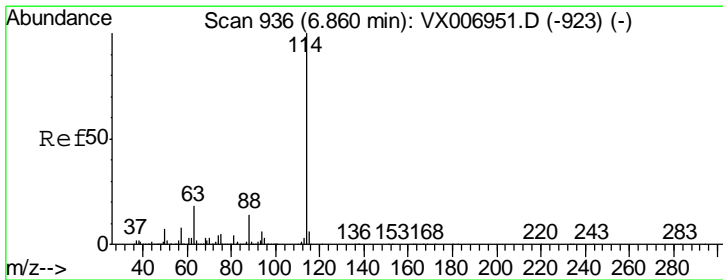
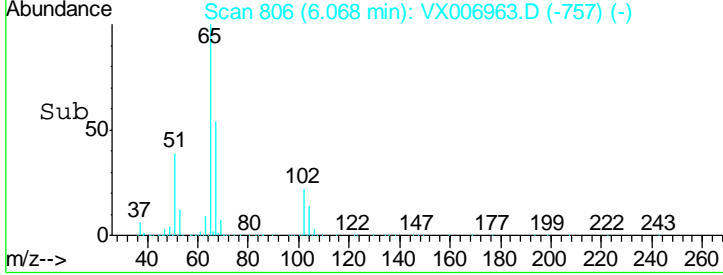
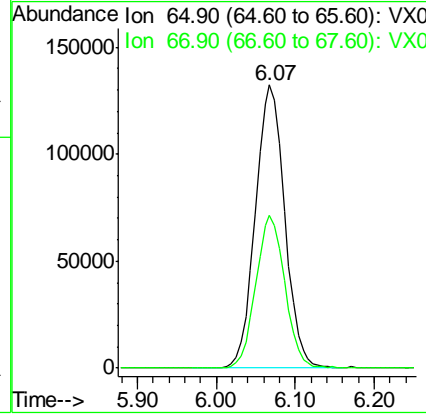
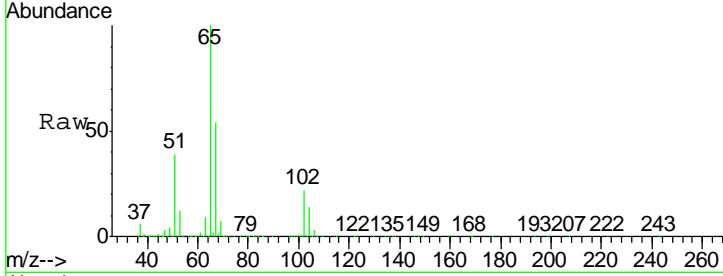




#33  
 1,2-Dichloroethane-d4  
 Concen: 49.637 ug/l  
 RT: 6.07 min Scan# 806  
 Delta R.T. -0.00 min  
 Lab File: VX006963.D  
 Acq: 09 Jan 2019 14:20

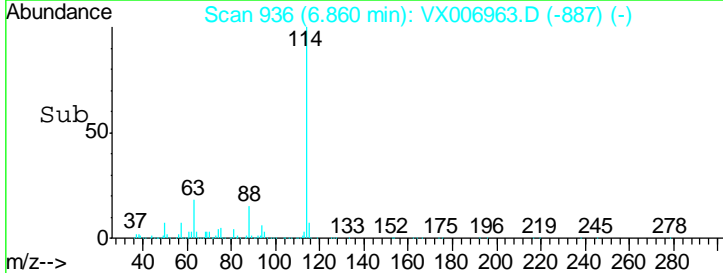
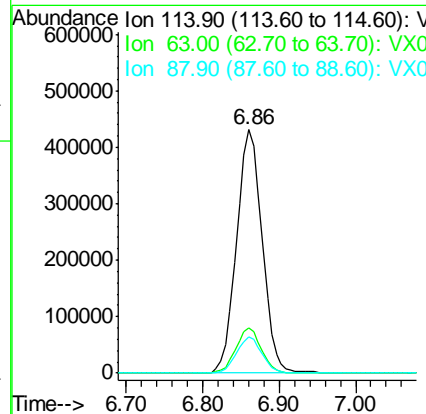
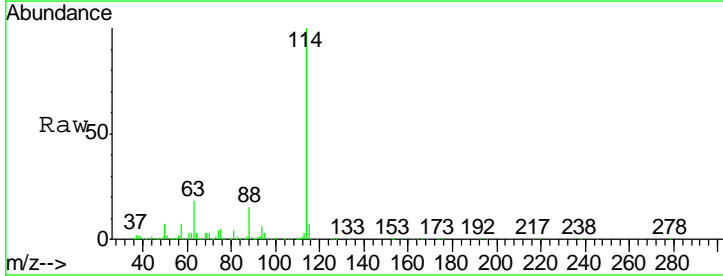
Instrument :  
 MSVOA\_X  
 ClientSampleId :  
 S32-0650

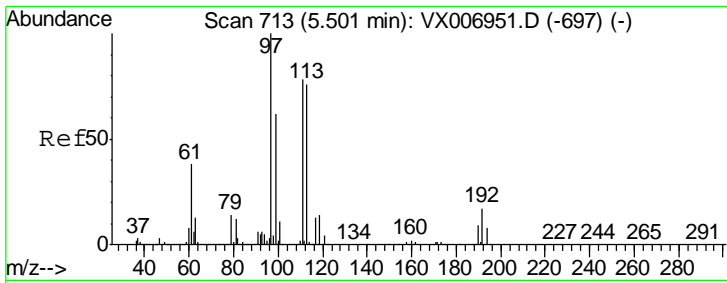
Tgt Ion	Resp	Lower	Upper
65	342226		
67	53.4	0.0	105.0



#34  
 1,4-Difluorobenzene  
 Concen: 50.000 ug/l  
 RT: 6.86 min Scan# 936  
 Delta R.T. -0.00 min  
 Lab File: VX006963.D  
 Acq: 09 Jan 2019 14:20

Tgt Ion	Resp	Lower	Upper
114	1001018		
63	18.4	0.0	34.8
88	15.0	0.0	28.8

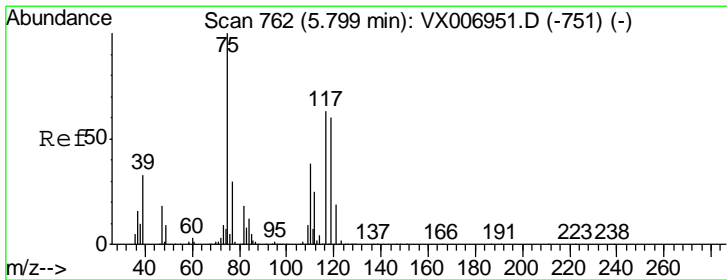
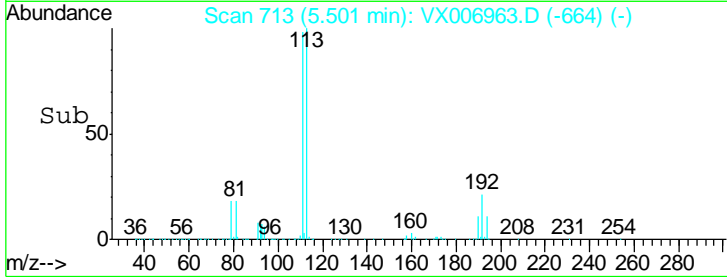
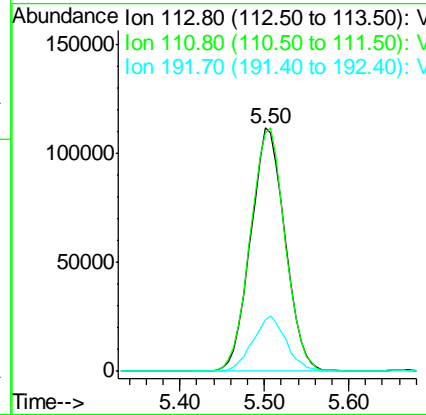
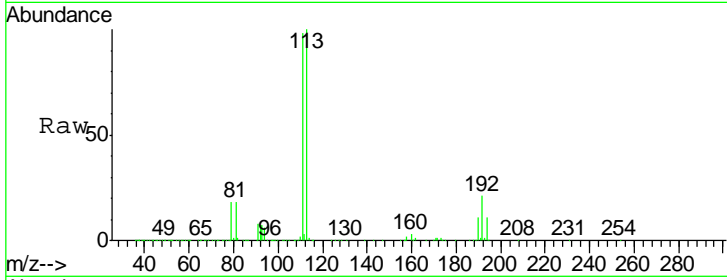




#35  
 Dibromofluoromethane  
 Concen: 48.668 ug/l  
 RT: 5.50 min Scan# 713  
 Delta R.T. -0.00 min  
 Lab File: VX006963.D  
 Acq: 09 Jan 2019 14:20

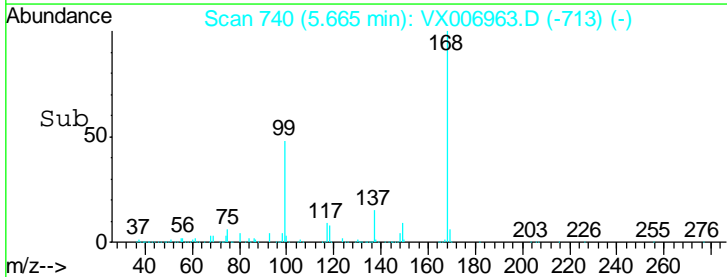
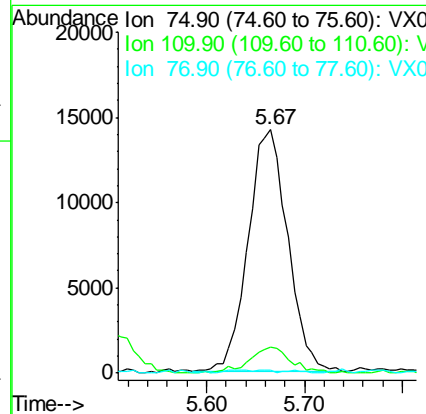
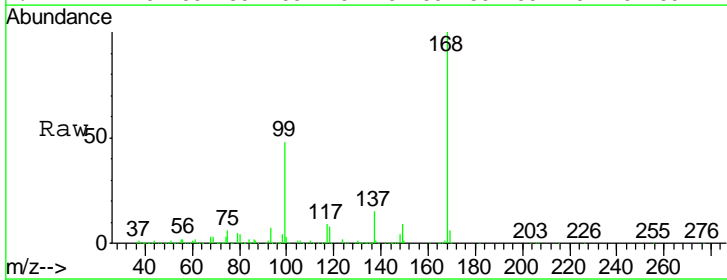
Instrument :  
 MSVOA\_X  
 ClientSampled :  
 S32-0650

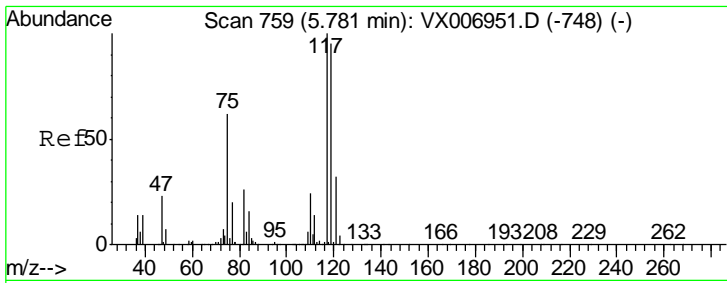
Tgt Ion	Resp	Lower	Upper
113	311985		
111	101.1	81.6	122.4
192	22.1	16.7	25.1



#36  
 1,1-Dichloropropene  
 Concen: 4.597 ug/l  
 RT: 5.67 min Scan# 740  
 Delta R.T. -0.13 min  
 Lab File: VX006963.D  
 Acq: 09 Jan 2019 14:20

Tgt Ion	Resp	Lower	Upper
75	40005		
110	11.3	20.2	60.5#
77	0.4	24.8	37.2#

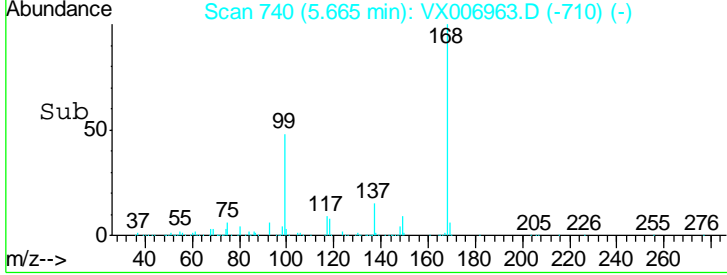
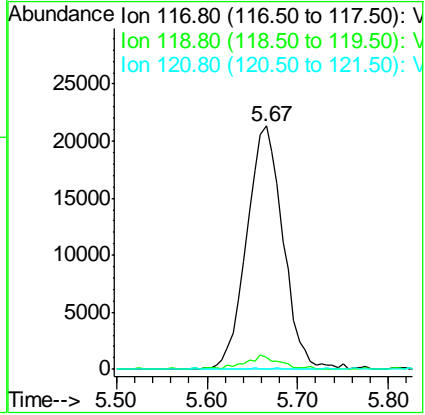
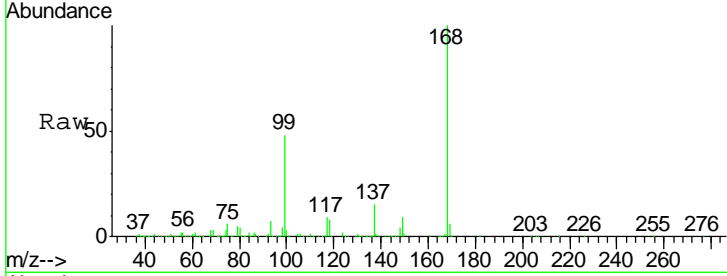




#38  
 Carbon Tetrachloride  
 Concen: 6.753 ug/l  
 RT: 5.67 min Scan# 740  
 Delta R.T. -0.12 min  
 Lab File: VX006963.D  
 Acq: 09 Jan 2019 14:20

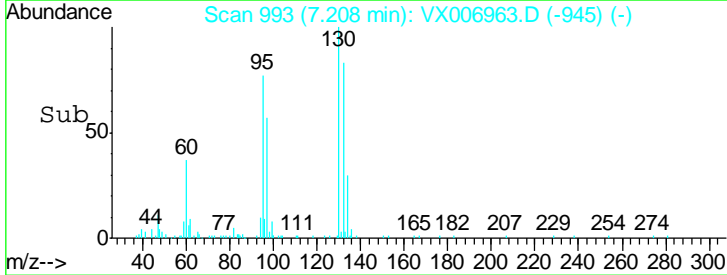
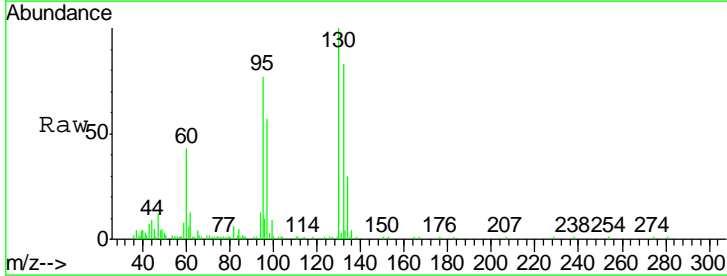
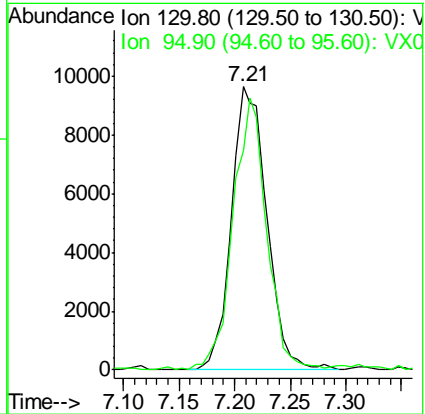
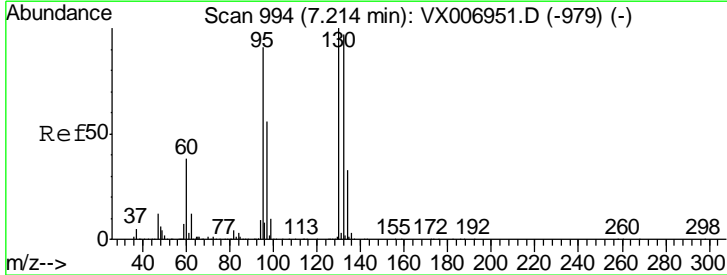
**Instrument :**  
 MSVOA\_X  
**ClientSampled :**  
 S32-0650

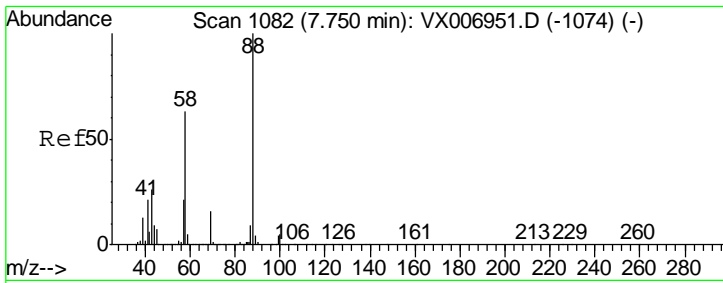
Tgt Ion	Resp	Lower	Upper
117	59128		
119	4.5	79.4	119.2#
121	0.0	24.0	36.0#



#44  
 Trichloroethene  
 Concen: 2.669 ug/l  
 RT: 7.21 min Scan# 993  
 Delta R.T. -0.01 min  
 Lab File: VX006963.D  
 Acq: 09 Jan 2019 14:20

Tgt Ion	Resp	Lower	Upper
130	21235		
95	77.5	0.0	187.0

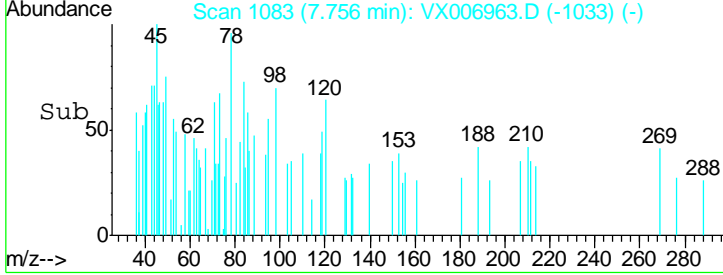
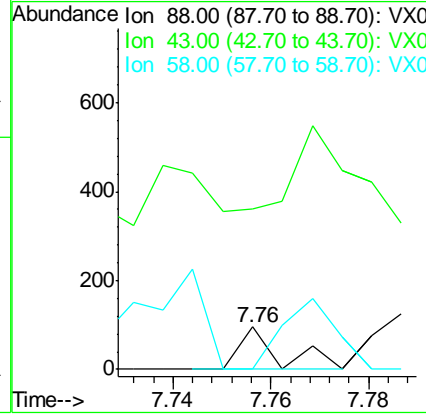
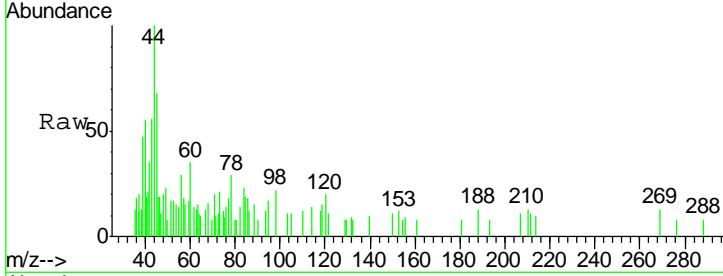




#49  
 1,4-Dioxane  
 Concen: Below Cal  
 RT: 7.76 min Scan# 1083  
 Delta R.T. 0.01 min  
 Lab File: VX006963.D  
 Acq: 09 Jan 2019 14:20

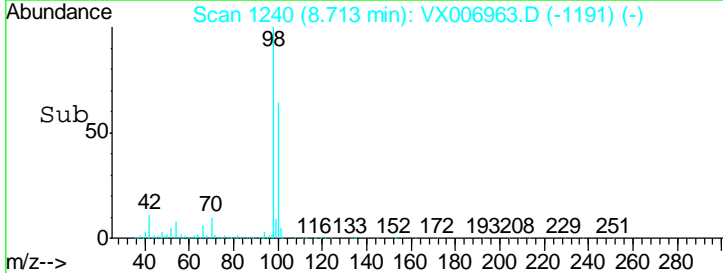
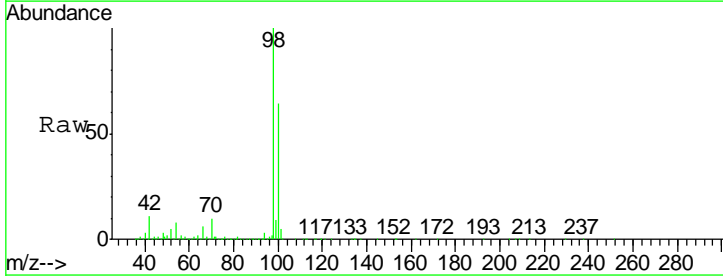
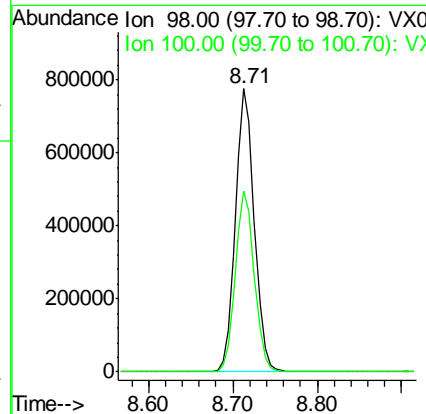
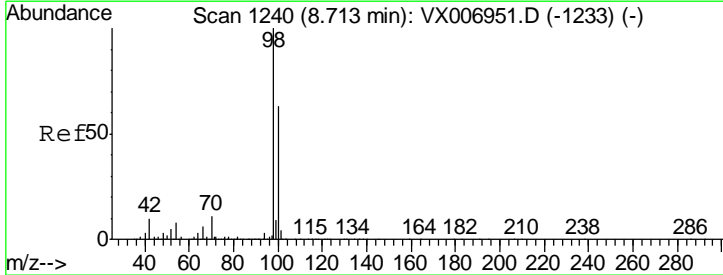
**Instrument :**  
 MSVOA\_X  
**ClientSampled :**  
 S32-0650

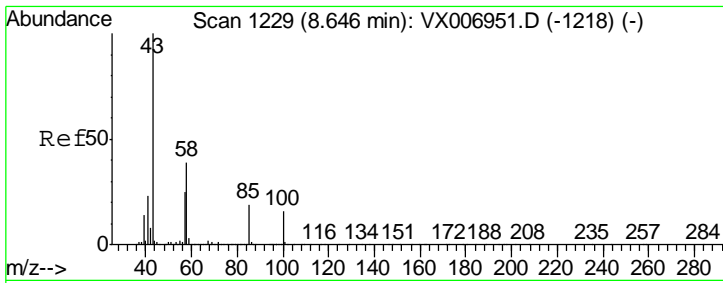
Tgt Ion	Resp	Lower	Upper
88	100		
43	489.1	22.2	33.4#
58	221.8	51.0	76.4#



#50  
 Toluene-d8  
 Concen: 50.339 ug/l  
 RT: 8.71 min Scan# 1240  
 Delta R.T. -0.00 min  
 Lab File: VX006963.D  
 Acq: 09 Jan 2019 14:20

Tgt Ion	Resp	Lower	Upper
98	100		
100	64.0	52.0	78.0

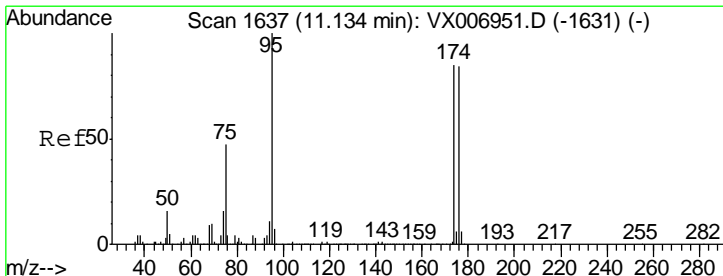
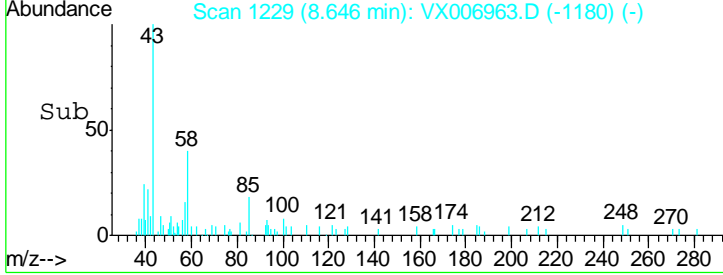
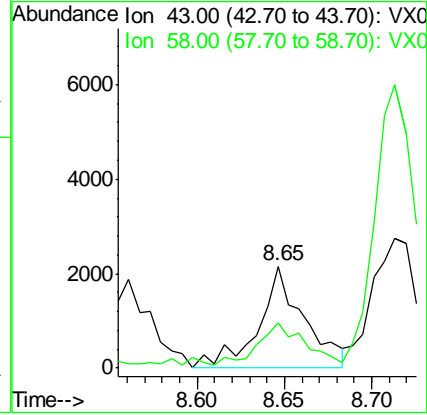
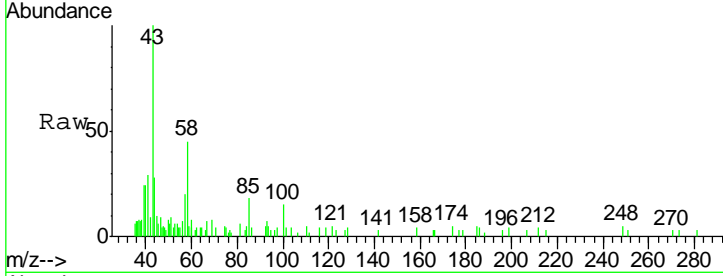




#51  
 4-Methyl-2-Pentanone  
 Concen: 0.416 ug/l  
 RT: 8.65 min Scan# 1229  
 Delta R.T. -0.00 min  
 Lab File: VX006963.D  
 Acq: 09 Jan 2019 14:20

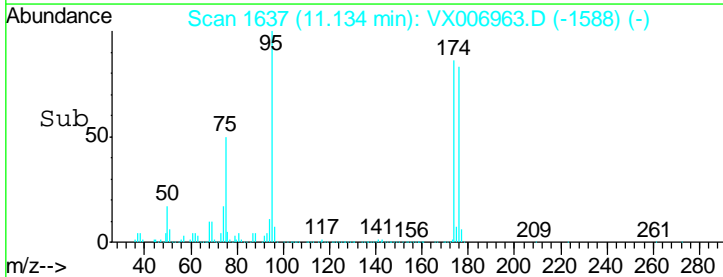
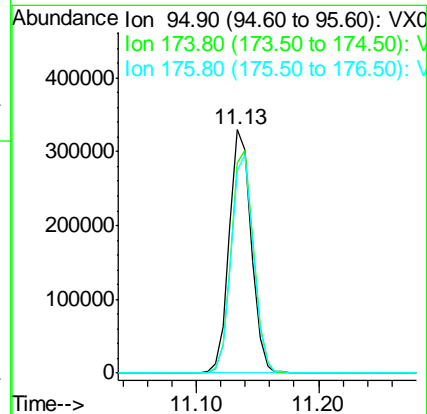
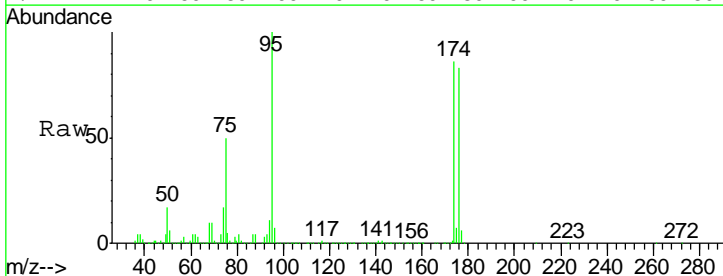
Instrument :  
 MSVOA\_X  
 ClientSampled :  
 S32-0650

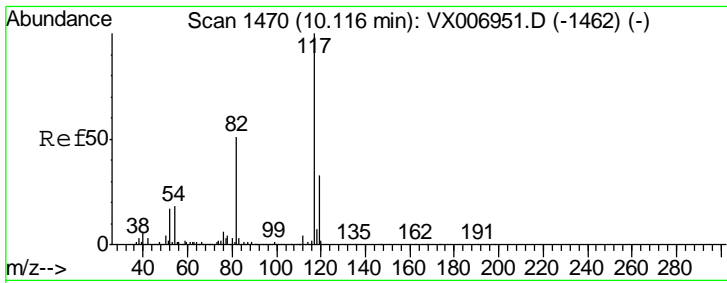
Tgt Ion	Resp	Lower	Upper
43	100		
58	42.9	31.8	47.6



#62  
 4-Bromofluorobenzene  
 Concen: 50.115 ug/l  
 RT: 11.13 min Scan# 1637  
 Delta R.T. -0.00 min  
 Lab File: VX006963.D  
 Acq: 09 Jan 2019 14:20

Tgt Ion	Resp	Lower	Upper
95	100		
174	93.0	0.0	182.2
176	90.3	0.0	178.8

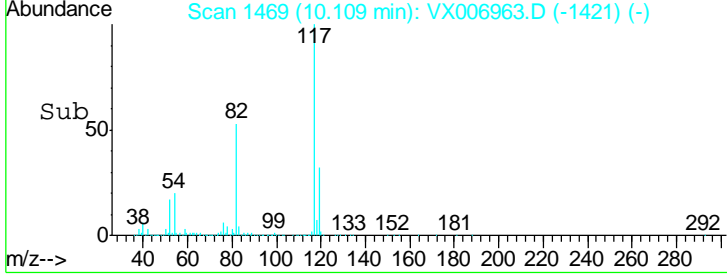
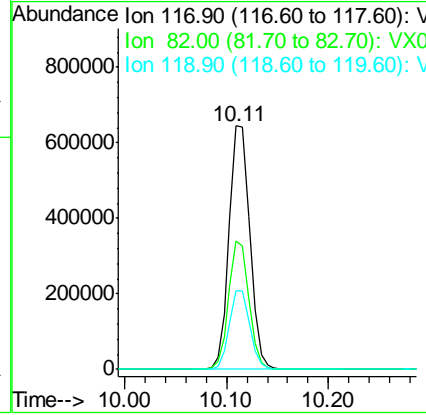
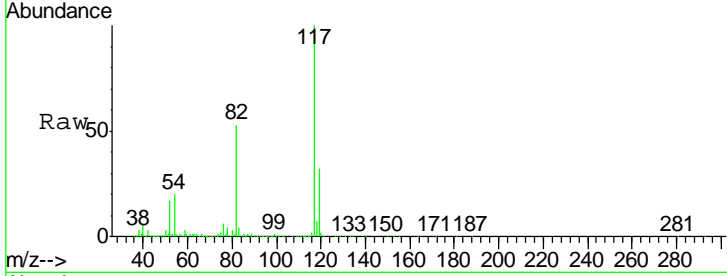




#63  
 Chlorobenzene-d5  
 Concen: 50.000 ug/l  
 RT: 10.11 min Scan# 1469  
 Delta R.T. -0.01 min  
 Lab File: VX006963.D  
 Acq: 09 Jan 2019 14:20

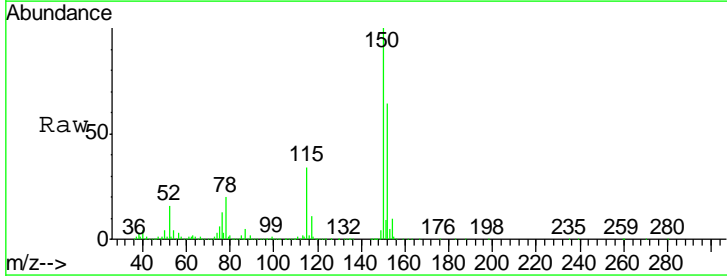
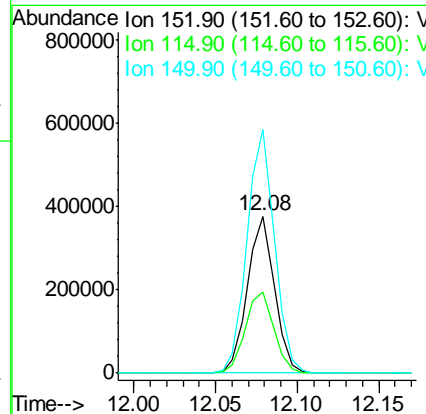
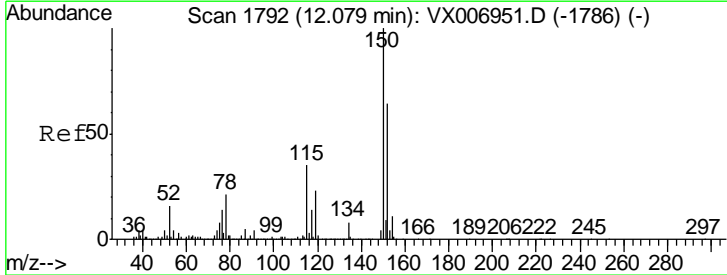
Instrument : MSVOA\_X  
 ClientSampled : S32-0650

Tgt Ion	Resp	Lower	Upper
117	911467		
82	52.7	41.0	61.6
119	32.4	25.4	38.0

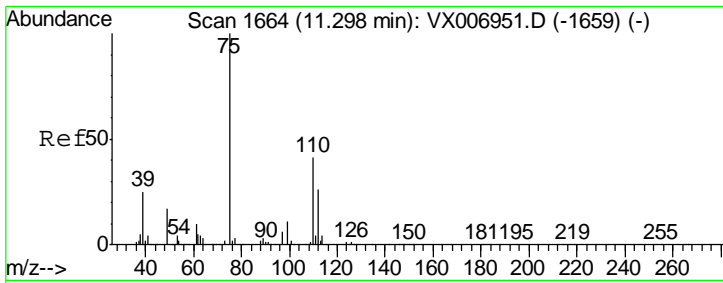


#72  
 1,4-Dichlorobenzene-d4  
 Concen: 50.000 ug/l  
 RT: 12.08 min Scan# 1792  
 Delta R.T. -0.00 min  
 Lab File: VX006963.D  
 Acq: 09 Jan 2019 14:20

Tgt Ion	Resp	Lower	Upper
152	438981		
115	54.5	39.1	117.2
150	157.3	0.0	344.8



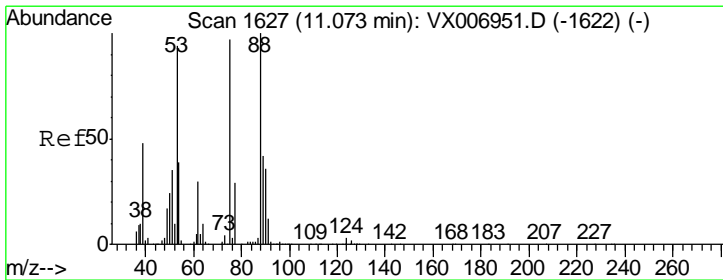
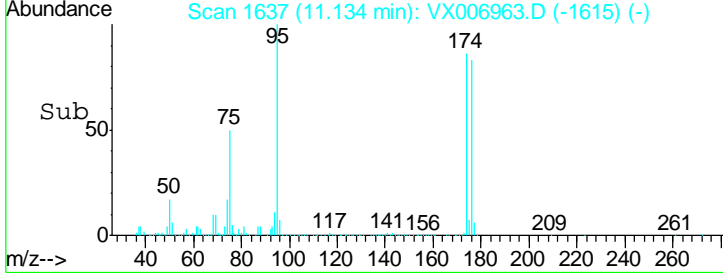
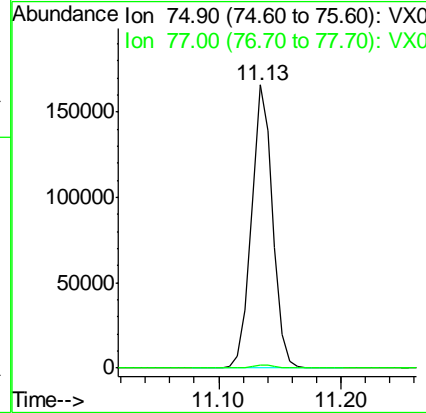
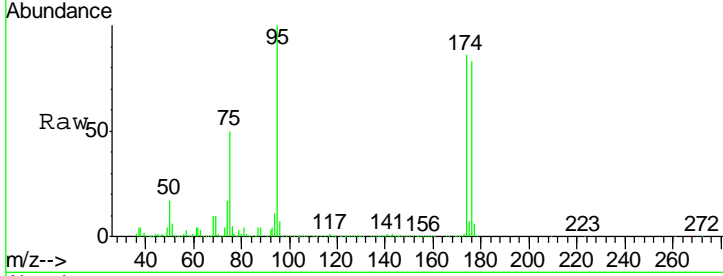




#76  
 1,2,3-Trichloropropane  
 Concen: 22.316 ug/l  
 RT: 11.13 min Scan# 1637  
 Delta R.T. -0.16 min  
 Lab File: VX006963.D  
 Acq: 09 Jan 2019 14:20

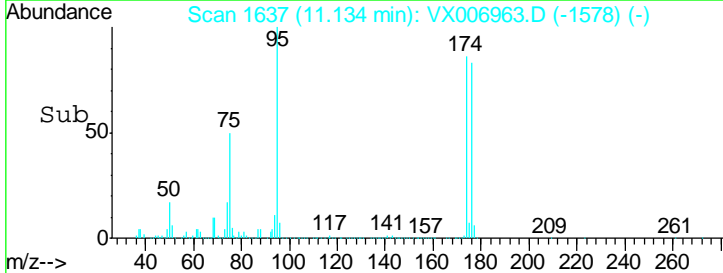
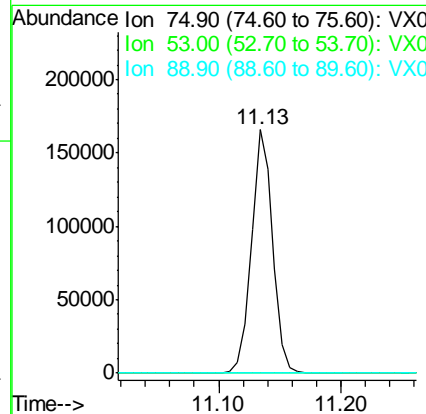
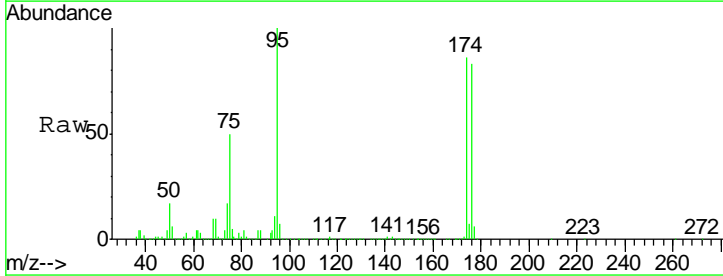
Instrument :  
 MSVOA\_X  
 ClientSampled :  
 S32-0650

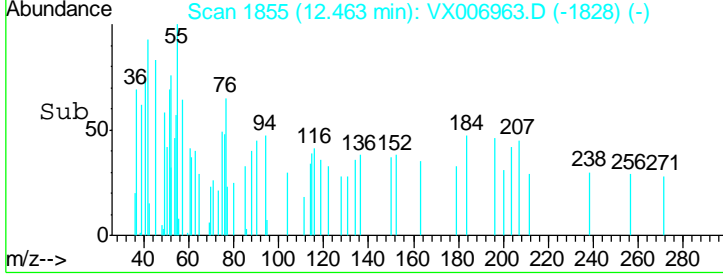
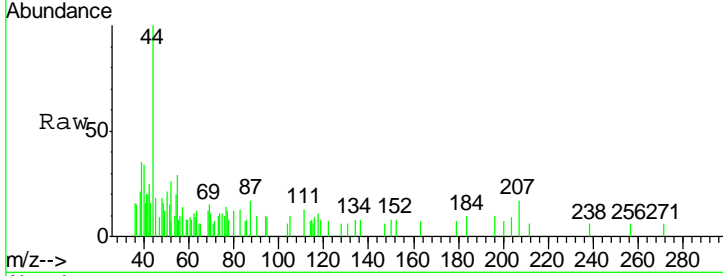
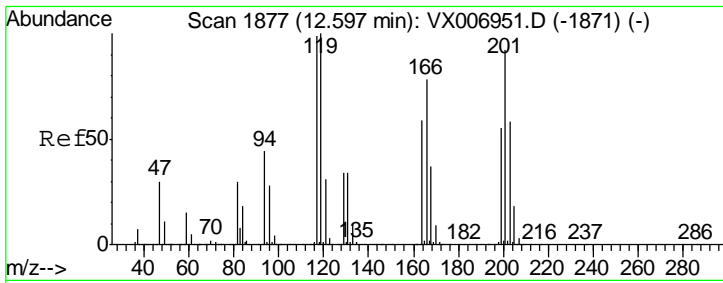
Tgt Ion: 75 Resp: 198518  
 Ion Ratio Lower Upper  
 75 100  
 77 1.2 18.5 55.5#



#81  
 trans-1,4-Dichloro-2-butene  
 Concen: 66.034 ug/l  
 RT: 11.13 min Scan# 1637  
 Delta R.T. 0.06 min  
 Lab File: VX006963.D  
 Acq: 09 Jan 2019 14:20

Tgt Ion: 75 Resp: 198518  
 Ion Ratio Lower Upper  
 75 100  
 53 0.0 79.7 119.5#  
 89 0.1 38.0 57.0#





#90  
 Hexachloroethane  
 Concen: 2.933 ug/l  
 RT: 12.46 min Scan# 1855  
 Delta R.T. -0.13 min  
 Lab File: VX006963.D  
 Acq: 09 Jan 2019 14:20

Instrument : MSVOA\_X  
 ClientSampled : S32-0650

Tot Ion	Ratio	Lower	Upper
117	100		
201	66.7	42.9	128.7

