

Data Path : Z:\voasrv\HPCHEM1\MSVOA_X\Data\VX020524\
 Data File : VX040126.D
 Acq On : 05 Feb 2024 19:08
 Operator : JC/MD
 Sample : P1337-19
 Misc : 5.0mL/MSVOA_X/WATER
 ALS Vial : 27 Sample Multiplier: 1

Instrument :
 MSVOA_X
 ClientSampleId :
 TP-6

Quant Time: Feb 06 03:05:53 2024
 Quant Method : Z:\voasrv\HPCHEM1\MSVOA_X\Method\82X013024W.M
 Quant Title : SW846 8260
 QLast Update : Thu Feb 01 05:44:39 2024
 Response via : Initial Calibration

Compound	R.T.	QIon	Response	Conc	Units	Dev(Min)

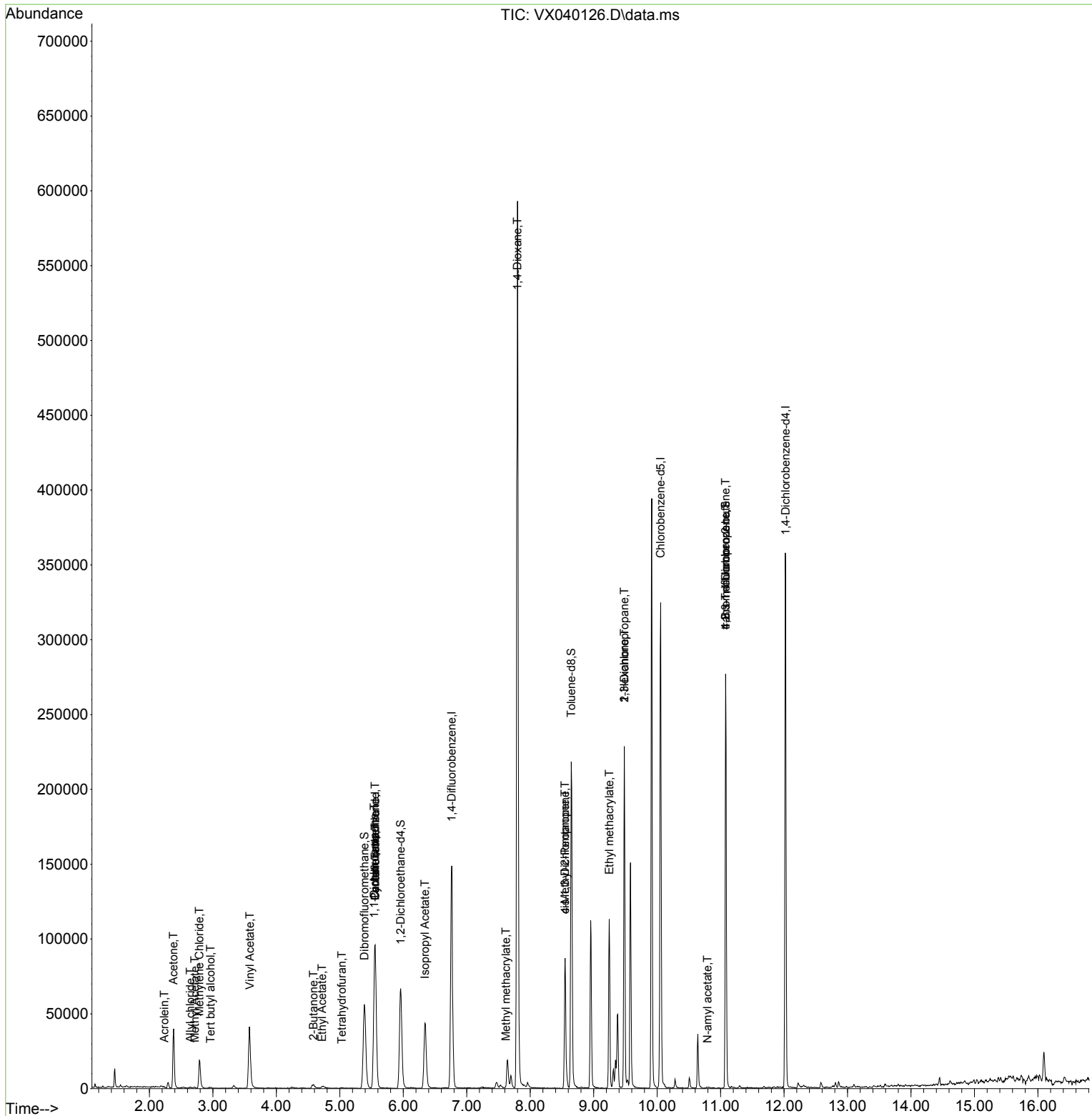
Internal Standards						
1) Pentafluorobenzene	5.556	168	87356	50.000	ug/l	0.00
34) 1,4-Difluorobenzene	6.763	114	132708	50.000	ug/l	0.00
63) Chlorobenzene-d5	10.055	117	135969	50.000	ug/l	0.00
72) 1,4-Dichlorobenzene-d4	12.024	152	71048	50.000	ug/l	0.00
System Monitoring Compounds						
33) 1,2-Dichloroethane-d4	5.958	65	63596	45.236	ug/l	0.00
Spiked Amount	50.000	Range 78 - 117	Recovery	=	90.480%	
35) Dibromofluoromethane	5.385	113	48441	53.621	ug/l	0.00
Spiked Amount	50.000	Range 75 - 124	Recovery	=	107.240%	
50) Toluene-d8	8.647	98	123550	36.570	ug/l	0.00
Spiked Amount	50.000	Range 92 - 112	Recovery	=	73.140%#	
62) 4-Bromofluorobenzene	11.079	95	72536	55.760	ug/l	0.00
Spiked Amount	50.000	Range 83 - 123	Recovery	=	111.520%	
Target Compounds						
						Qvalue
11) Tert butyl alcohol	2.965	59	819	3.211	ug/l #	78
13) Acrolein	2.233	56	300	1.227	ug/l	94
14) Allyl chloride	2.642	41	688	0.388	ug/l #	52
16) Acetone	2.380	43	40212	61.045	ug/l #	89
18) Methyl Acetate	2.715	43	1030	0.660	ug/l	91
20) Methylene Chloride	2.788	84	8742	7.468	ug/l	94
23) Vinyl Acetate	3.581	43	696	0.227	ug/l #	73
25) 2-Butanone	4.587	43	4134	4.515	ug/l #	81
29) Tetrahydrofuran	5.032	42	243	0.417	ug/l #	40
31) Cyclohexane	5.556	56	2163	1.228	ug/l #	11
36) 1,1-Dichloropropene	5.544	75	7930	6.070	ug/l #	50
37) Ethyl Acetate	4.721	43	1317	0.923	ug/l #	69
38) Carbon Tetrachloride	5.556	117	9872	7.897	ug/l #	15
43) Isopropyl Acetate	6.342	43	61912	27.515	ug/l	100
48) Methyl methacrylate	7.617	41	1664	1.501	ug/l #	16
49) 1,4-Dioxane	7.799	88	23	0.955	ug/l #	1
51) 4-Methyl-2-Pentanone	8.549	43	34034	22.157	ug/l #	46
54) cis-1,3-Dichloropropene	8.549	75	12085	8.130	ug/l #	69
56) Ethyl methacrylate	9.244	69	296	0.206	ug/l #	1
57) 1,3-Dichloropropane	9.482	76	1848	1.143	ug/l #	42
59) 2-Hexanone	9.482	43	27685	22.606	ug/l #	52
74) N-amyl acetate	10.793	43	658	0.483	ug/l #	44
76) 1,2,3-Trichloropropane	11.079	75	39101	25.844	ug/l #	38
81) trans-1,4-Dichloro-2-b...	11.079	75	39101	76.003	ug/l #	5
90) Hexachloroethane	12.652	117	25	Below Cal	#	17

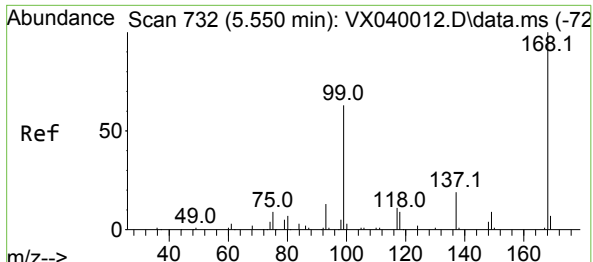
(#) = qualifier out of range (m) = manual integration (+) = signals summed

Data Path : Z:\voasrv\HPCHEM1\MSVOA_X\Data\VX020524\
 Data File : VX040126.D
 Acq On : 05 Feb 2024 19:08
 Operator : JC/MD
 Sample : P1337-19
 Misc : 5.0mL/MSVOA_X/WATER
 ALS Vial : 27 Sample Multiplier: 1

Instrument :
 MSVOA_X
 ClientSampleId :
 TP-6

Quant Time: Feb 06 03:05:53 2024
 Quant Method : Z:\voasrv\HPCHEM1\MSVOA_X\Method\82X013024W.M
 Quant Title : SW846 8260
 QLast Update : Thu Feb 01 05:44:39 2024
 Response via : Initial Calibration

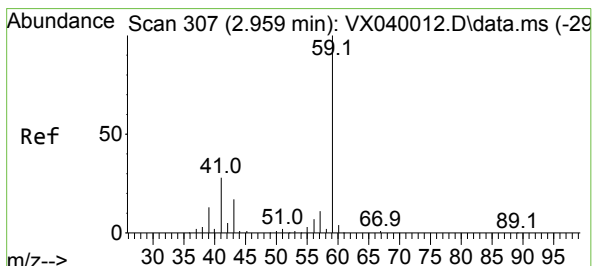
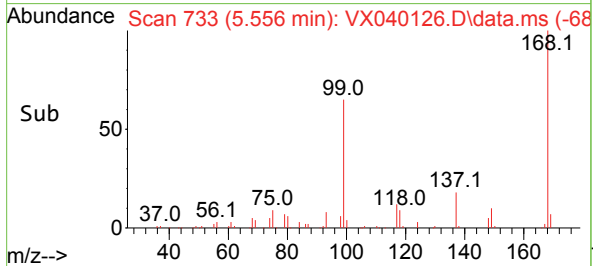
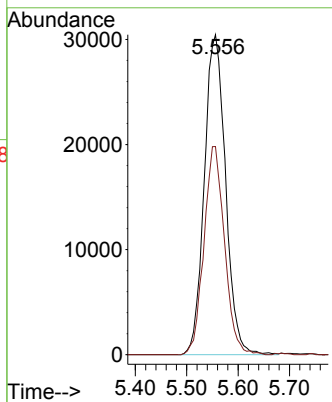
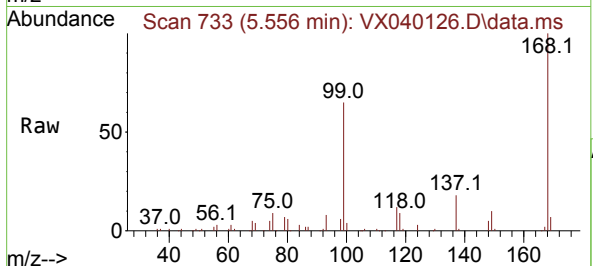




#1
 Pentafluorobenzene
 Concen: 50.000 ug/l
 RT: 5.556 min Scan# 71
 Delta R.T. 0.006 min
 Lab File: VX040126.D
 Acq: 05 Feb 2024 19:08

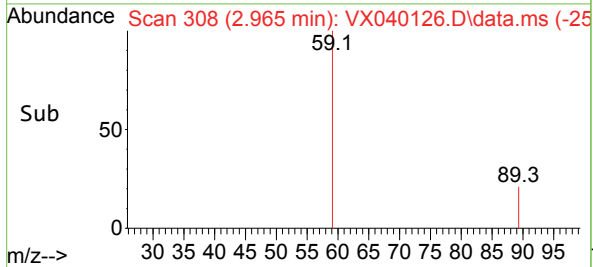
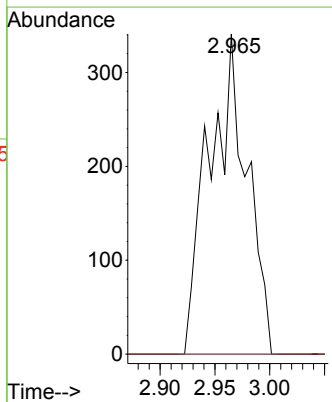
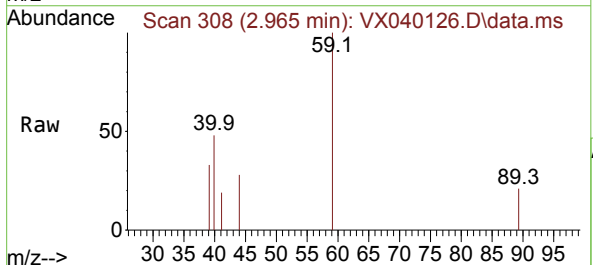
Instrument :
 MSVOA_X
 ClientSampleId :
 TP-6

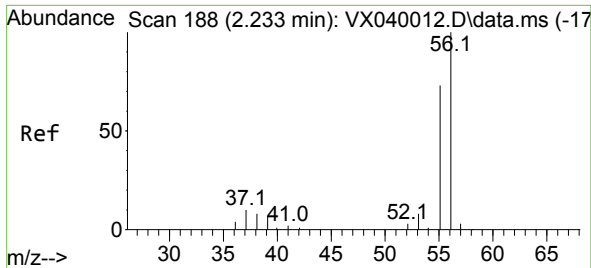
Tgt Ion:168 Resp: 87356
 Ion Ratio Lower Upper
 168 100
 99 65.0 56.6 85.0



#11
 Tert butyl alcohol
 Concen: 3.211 ug/l
 RT: 2.965 min Scan# 308
 Delta R.T. 0.006 min
 Lab File: VX040126.D
 Acq: 05 Feb 2024 19:08

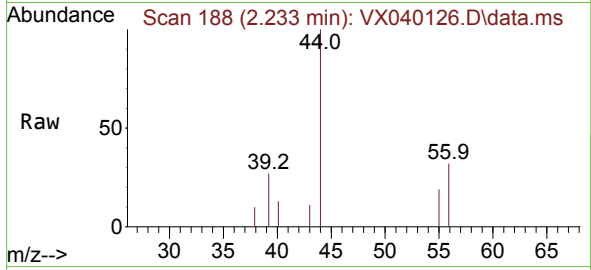
Tgt Ion: 59 Resp: 819
 Ion Ratio Lower Upper
 59 100
 57 0.0 6.0 9.0#



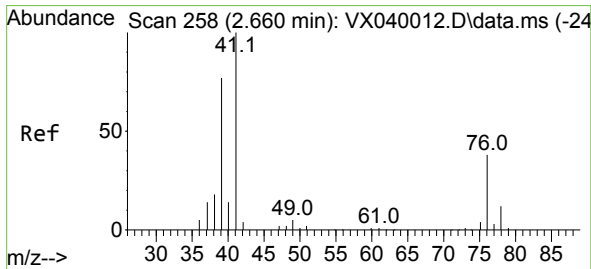
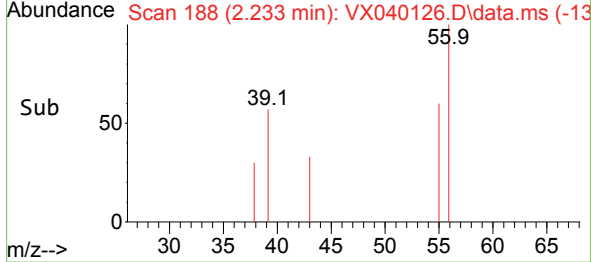
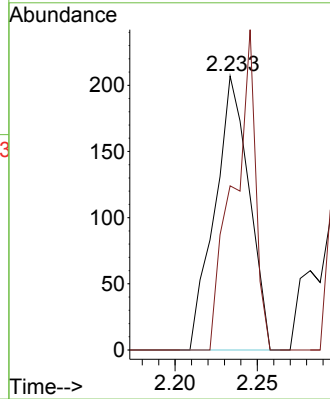


#13
 Acrolein
 Concen: 1.227 ug/l
 RT: 2.233 min Scan# 11
 Delta R.T. 0.000 min
 Lab File: VX040126.D
 Acq: 05 Feb 2024 19:08

Instrument : MSVOA_X
 ClientSampleId : TP-6

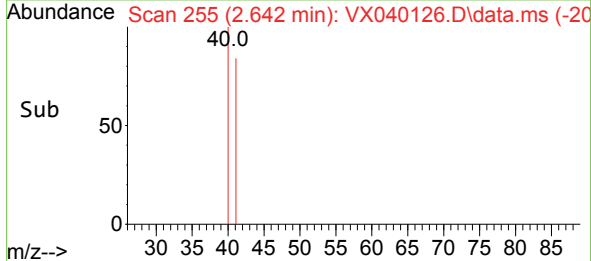
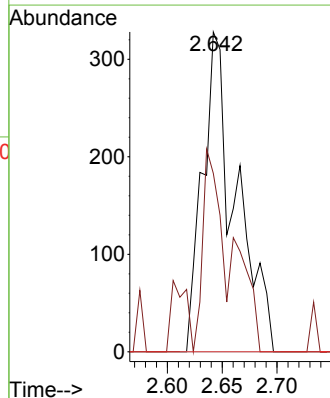
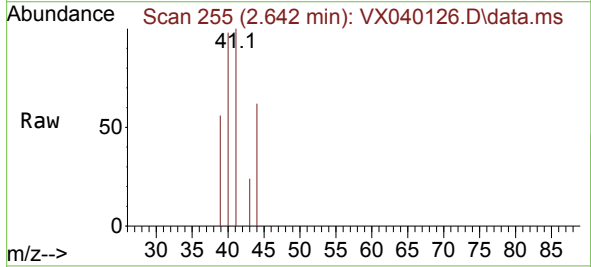


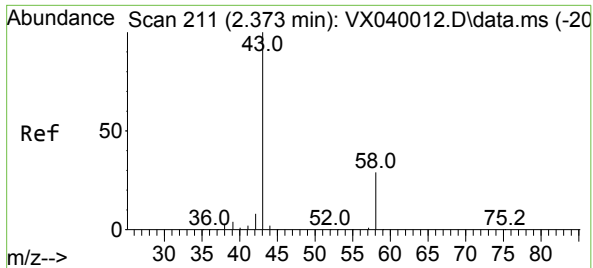
Tgt Ion: 56 Resp: 300
 Ion Ratio Lower Upper
 56 100
 55 76.3 57.1 85.7



#14
 Allyl chloride
 Concen: 0.388 ug/l
 RT: 2.642 min Scan# 255
 Delta R.T. -0.018 min
 Lab File: VX040126.D
 Acq: 05 Feb 2024 19:08

Tgt Ion: 41 Resp: 688
 Ion Ratio Lower Upper
 41 100
 39 33.7 55.8 83.6#
 76 0.0 24.3 36.5#

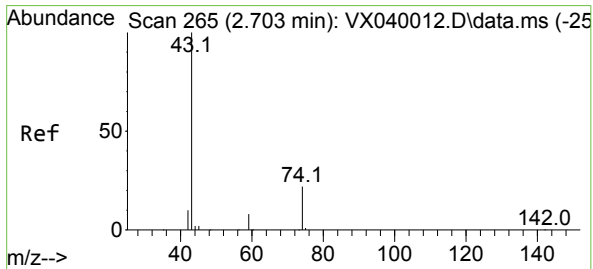
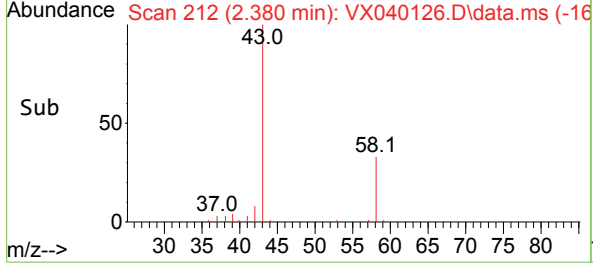
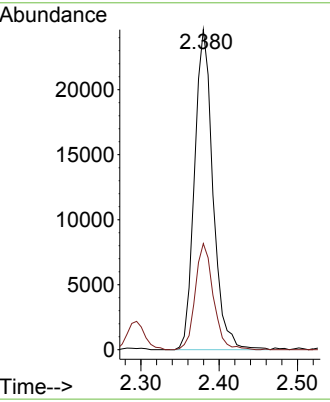
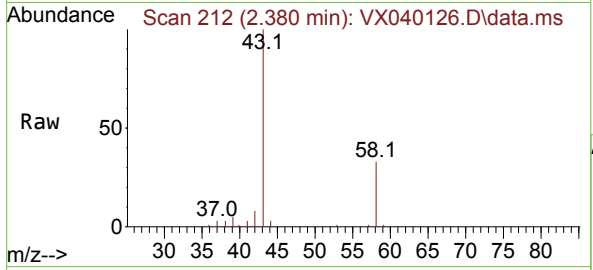




#16
 Acetone
 Concen: 61.045 ug/l
 RT: 2.380 min Scan# 211
 Delta R.T. 0.006 min
 Lab File: VX040126.D
 Acq: 05 Feb 2024 19:08

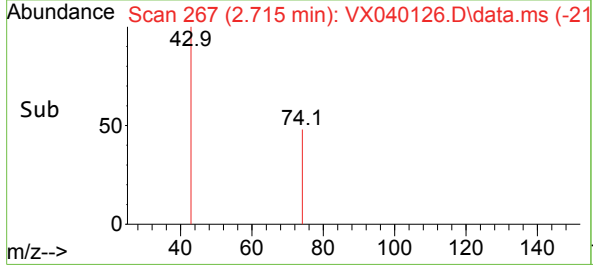
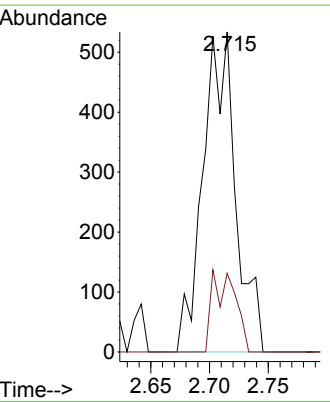
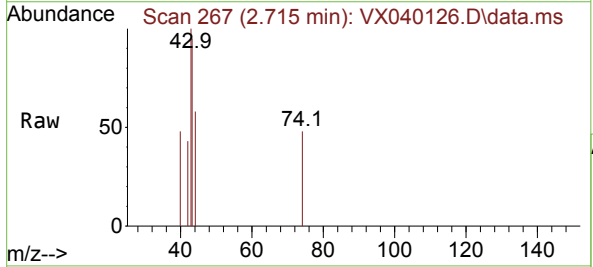
Instrument : MSVOA_X
 ClientSampleId : TP-6

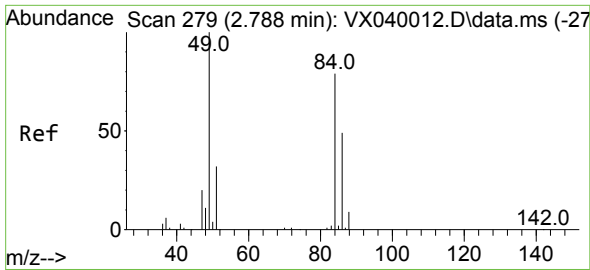
Tgt Ion: 43 Resp: 40212
 Ion Ratio Lower Upper
 43 100
 58 33.1 21.9 32.9#



#18
 Methyl Acetate
 Concen: 0.660 ug/l
 RT: 2.715 min Scan# 267
 Delta R.T. 0.012 min
 Lab File: VX040126.D
 Acq: 05 Feb 2024 19:08

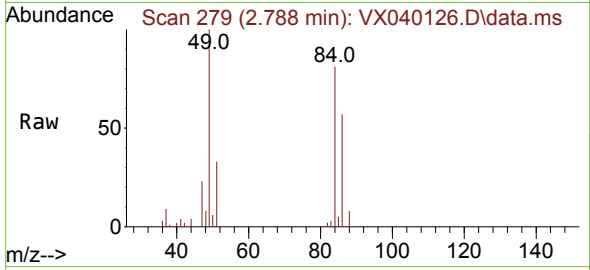
Tgt Ion: 43 Resp: 1030
 Ion Ratio Lower Upper
 43 100
 74 17.9 17.8 26.8





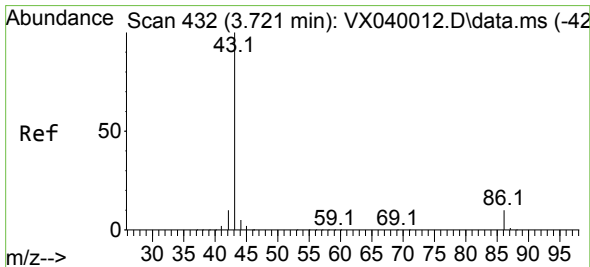
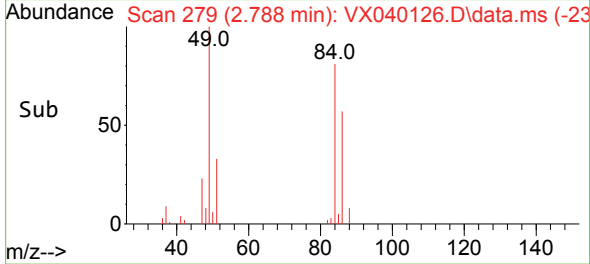
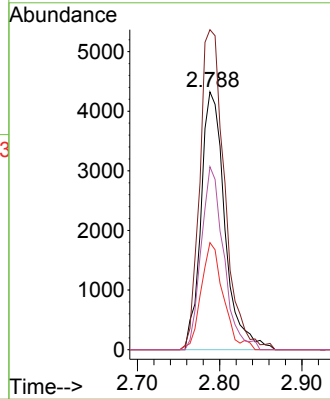
#20
 Methylene Chloride
 Concen: 7.468 ug/l
 RT: 2.788 min Scan# 21
 Delta R.T. 0.000 min
 Lab File: VX040126.D
 Acq: 05 Feb 2024 19:08

Instrument :
 MSVOA_X
 ClientSampleId :
 TP-6



Tgt Ion: 84 Resp: 8742

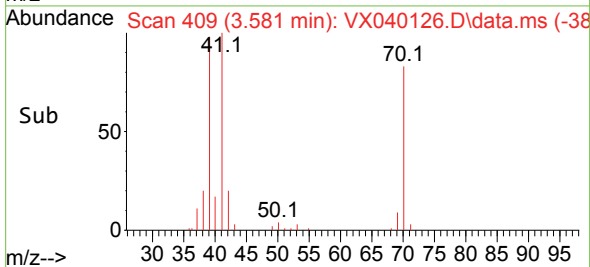
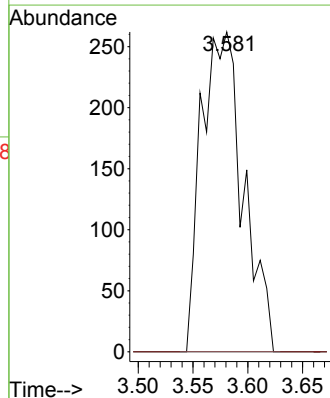
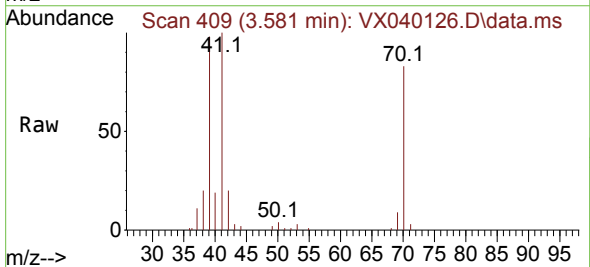
Ion	Ratio	Lower	Upper
84	100		
49	124.1	103.6	155.4
51	41.5	33.8	50.6
86	71.0	49.4	74.0

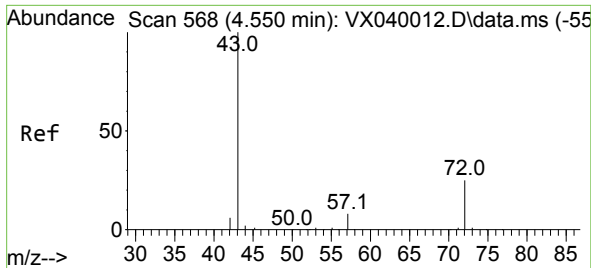


#23
 Vinyl Acetate
 Concen: 0.227 ug/l
 RT: 3.581 min Scan# 409
 Delta R.T. -0.140 min
 Lab File: VX040126.D
 Acq: 05 Feb 2024 19:08

Tgt Ion: 43 Resp: 696

Ion	Ratio	Lower	Upper
43	100		
86	0.0	7.8	11.8#

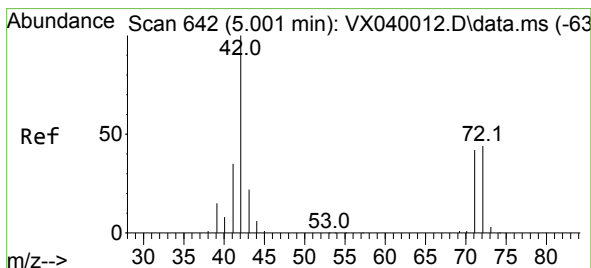
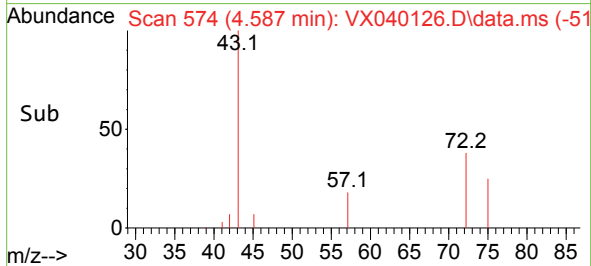
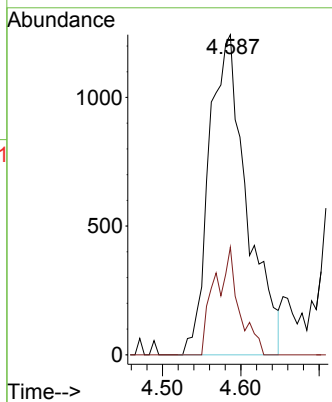
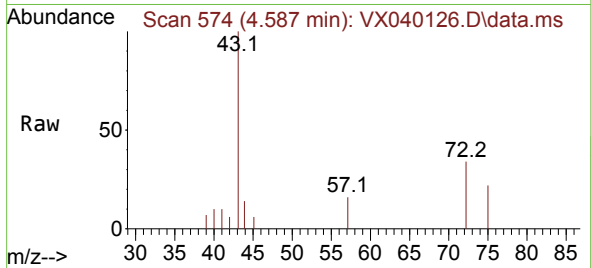




#25
 2-Butanone
 Concen: 4.515 ug/l
 RT: 4.587 min Scan# 51
 Delta R.T. 0.037 min
 Lab File: VX040126.D
 Acq: 05 Feb 2024 19:08

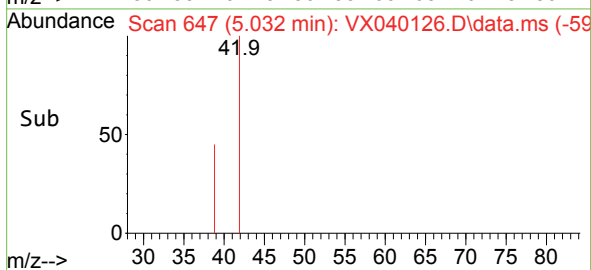
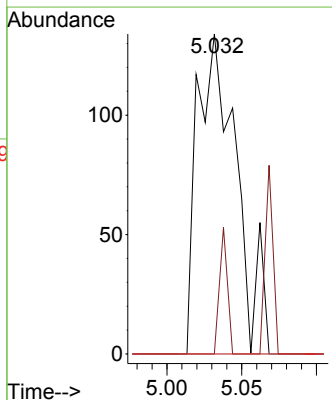
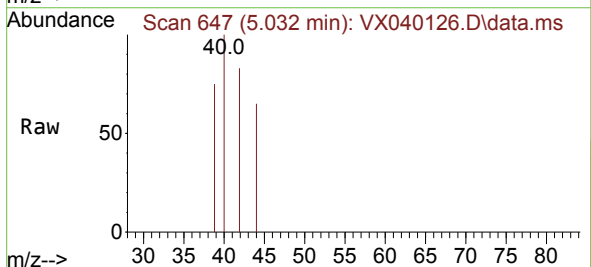
Instrument : MSVOA_X
 ClientSampleId : TP-6

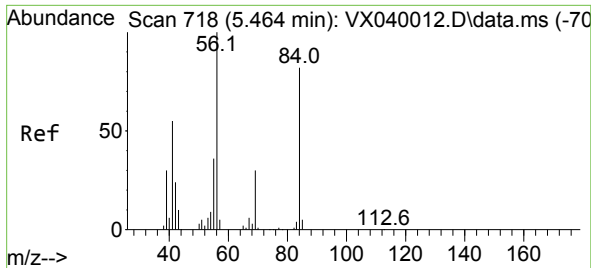
Tgt Ion: 43 Resp: 4134
 Ion Ratio Lower Upper
 43 100
 72 33.6 19.4 29.2#



#29
 Tetrahydrofuran
 Concen: 0.417 ug/l
 RT: 5.032 min Scan# 647
 Delta R.T. 0.031 min
 Lab File: VX040126.D
 Acq: 05 Feb 2024 19:08

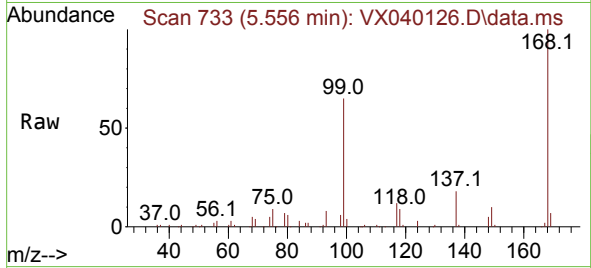
Tgt Ion: 42 Resp: 243
 Ion Ratio Lower Upper
 42 100
 72 7.8 34.2 51.4#
 71 0.0 32.2 48.2#



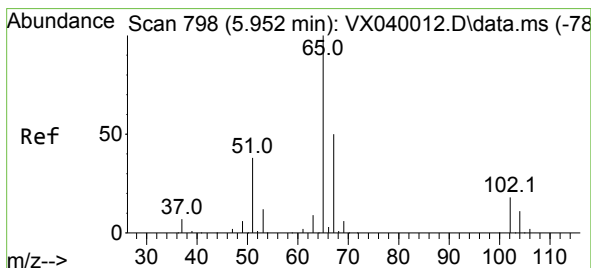
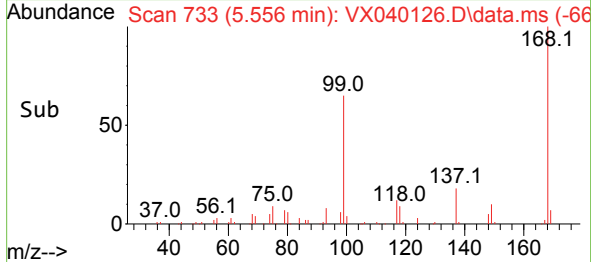
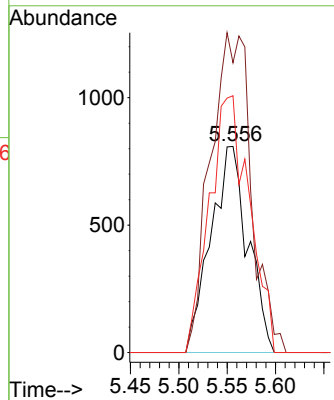


#31
 Cyclohexane
 Concen: 1.228 ug/l
 RT: 5.556 min Scan# 711
 Delta R.T. 0.092 min
 Lab File: VX040126.D
 Acq: 05 Feb 2024 19:08

Instrument : MSVOA_X
 ClientSampleId : TP-6

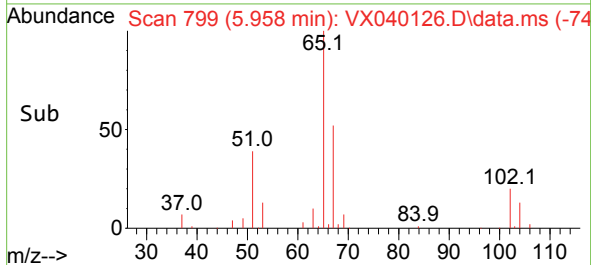
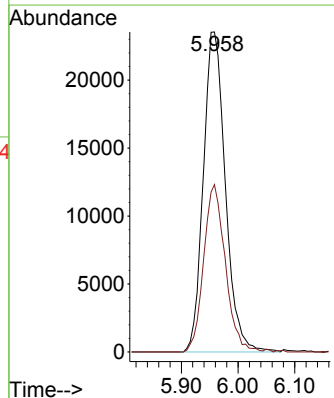
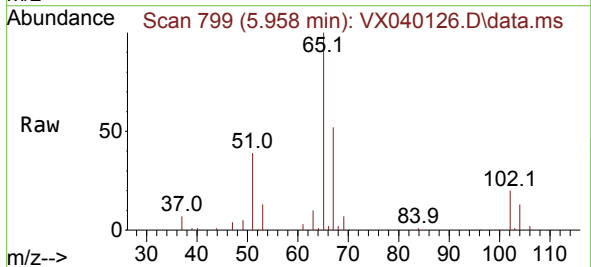


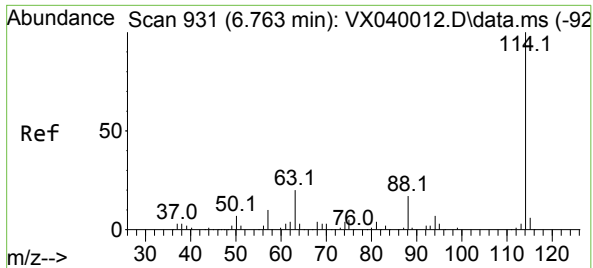
Tgt Ion: 56 Resp: 2163
 Ion Ratio Lower Upper
 56 100
 69 140.5 23.4 35.2#
 84 124.6 65.9 98.9#



#33
 1,2-Dichloroethane-d4
 Concen: 45.236 ug/l
 RT: 5.958 min Scan# 799
 Delta R.T. 0.006 min
 Lab File: VX040126.D
 Acq: 05 Feb 2024 19:08

Tgt Ion: 65 Resp: 63596
 Ion Ratio Lower Upper
 65 100
 67 51.3 0.0 100.2



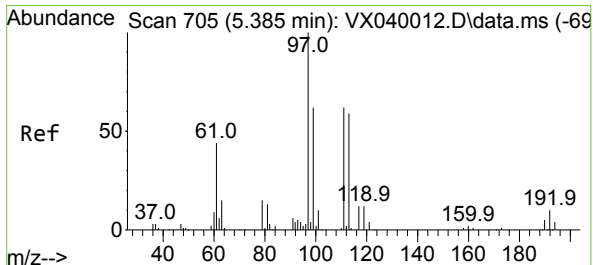
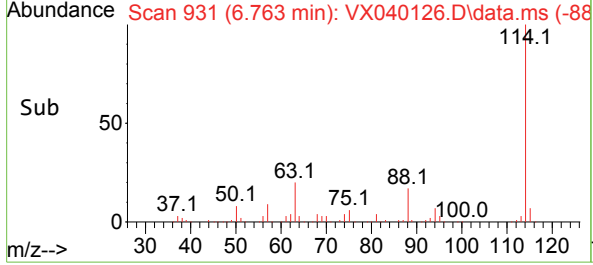
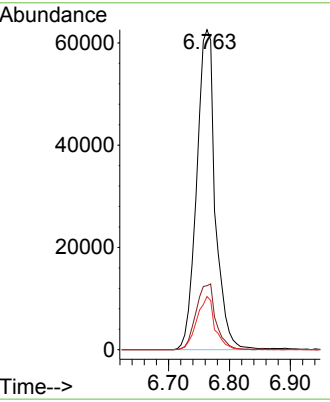
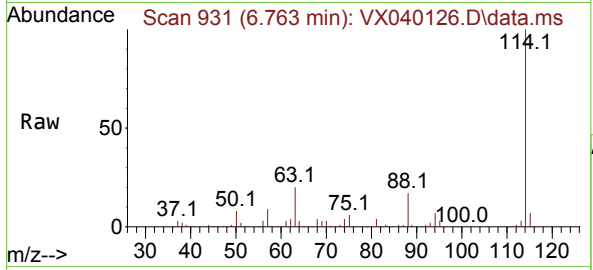


#34
 1,4-Difluorobenzene
 Concen: 50.000 ug/l
 RT: 6.763 min Scan# 91
 Delta R.T. 0.000 min
 Lab File: VX040126.D
 Acq: 05 Feb 2024 19:08

Instrument : MSVOA_X
 ClientSampleId : TP-6

Tgt Ion:114 Resp: 132708

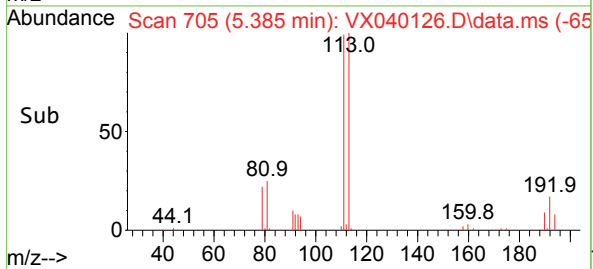
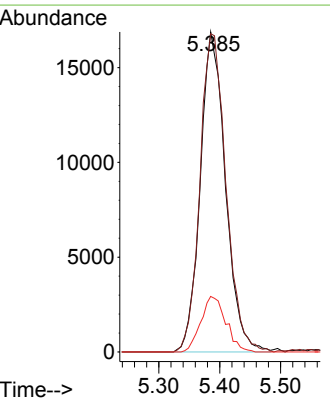
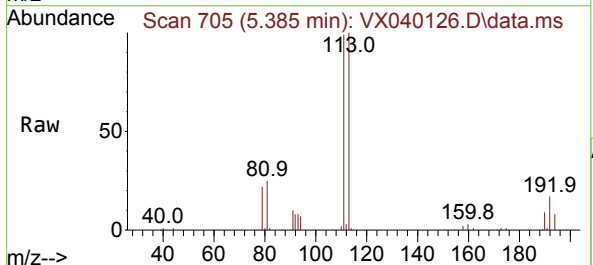
Ion	Ratio	Lower	Upper
114	100		
63	20.0	0.0	45.0
88	16.6	0.0	36.6

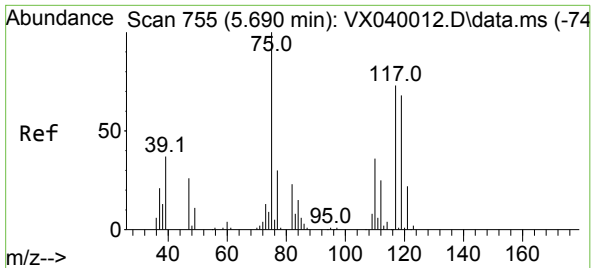


#35
 Dibromofluoromethane
 Concen: 53.621 ug/l
 RT: 5.385 min Scan# 705
 Delta R.T. 0.000 min
 Lab File: VX040126.D
 Acq: 05 Feb 2024 19:08

Tgt Ion:113 Resp: 48441

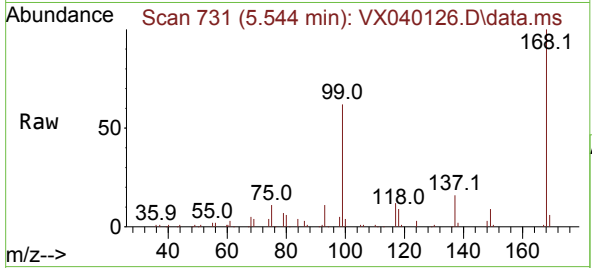
Ion	Ratio	Lower	Upper
113	100		
111	102.8	82.9	124.3
192	17.3	13.3	19.9





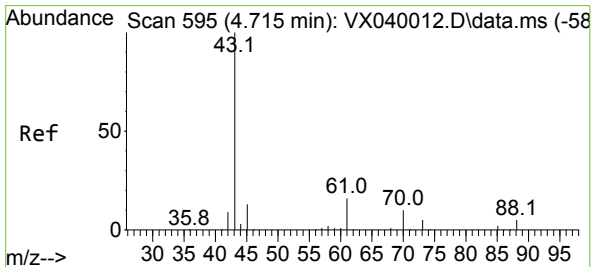
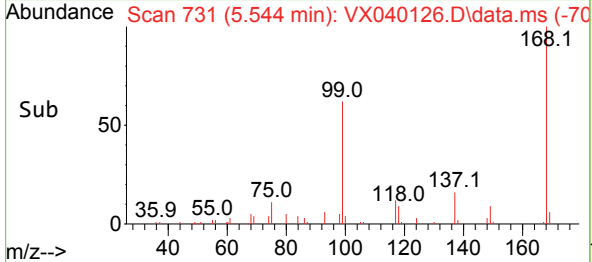
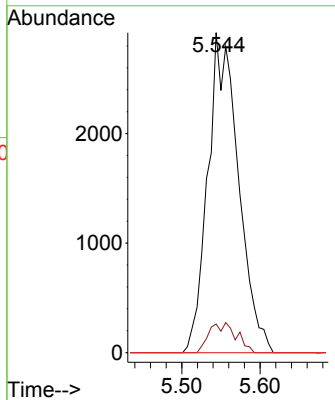
#36
 1,1-Dichloropropene
 Concen: 6.070 ug/l
 RT: 5.544 min Scan# 711
 Delta R.T. -0.146 min
 Lab File: VX040126.D
 Acq: 05 Feb 2024 19:08

Instrument : MSVOA_X
 ClientSampleId : TP-6



Tgt Ion: 75 Resp: 7930

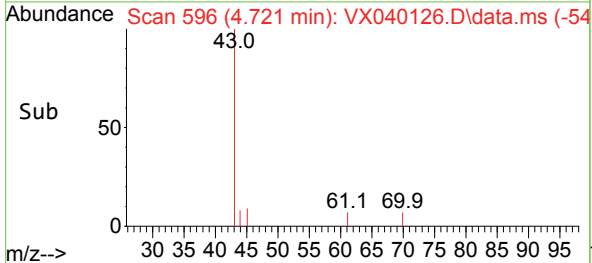
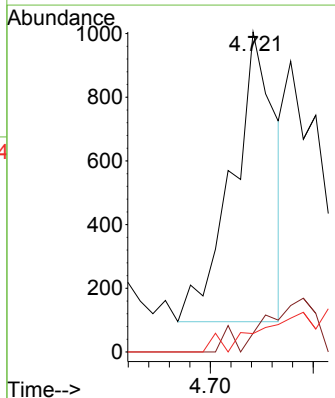
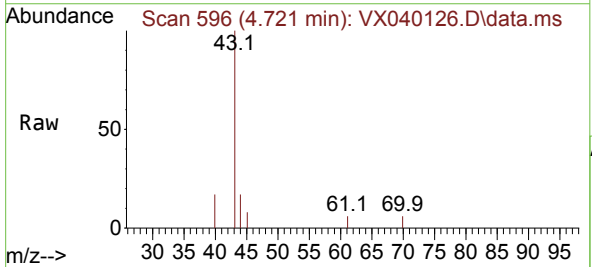
Ion	Ratio	Lower	Upper
75	100		
110	8.3	17.0	50.9#
77	0.0	24.7	37.1#

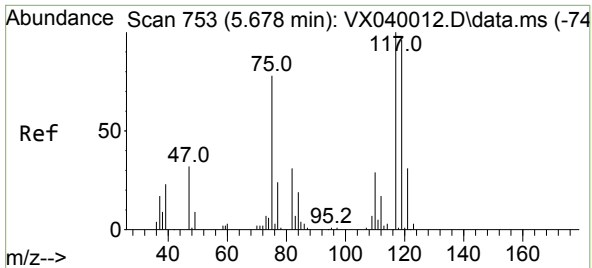


#37
 Ethyl Acetate
 Concen: 0.923 ug/l
 RT: 4.721 min Scan# 596
 Delta R.T. 0.006 min
 Lab File: VX040126.D
 Acq: 05 Feb 2024 19:08

Tgt Ion: 43 Resp: 1317

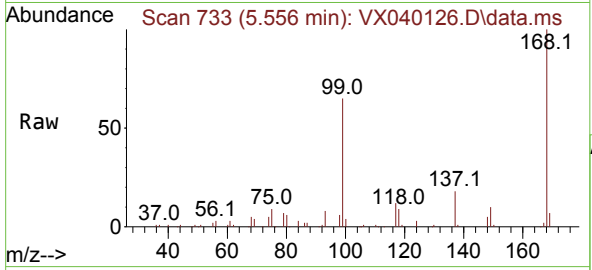
Ion	Ratio	Lower	Upper
43	100		
61	0.0	10.6	16.0#
70	0.0	8.3	12.5#



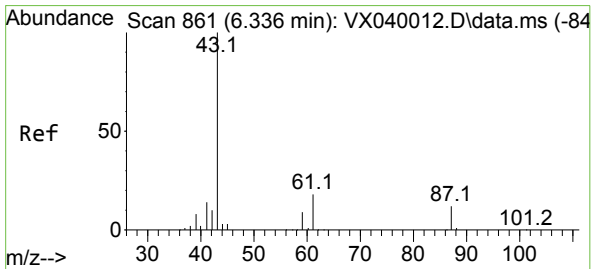
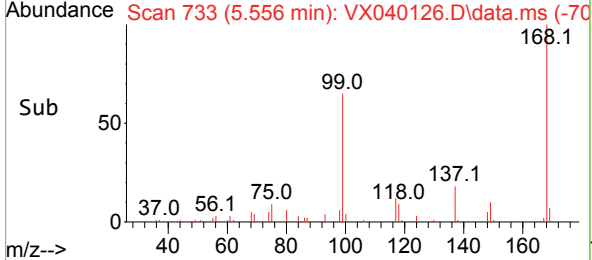
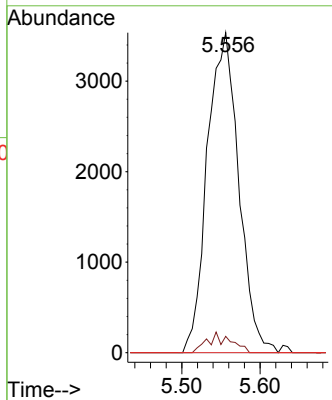


#38
 Carbon Tetrachloride
 Concen: 7.897 ug/l
 RT: 5.556 min Scan# 711
 Delta R.T. -0.122 min
 Lab File: VX040126.D
 Acq: 05 Feb 2024 19:08

Instrument : MSVOA_X
 ClientSampleId : TP-6

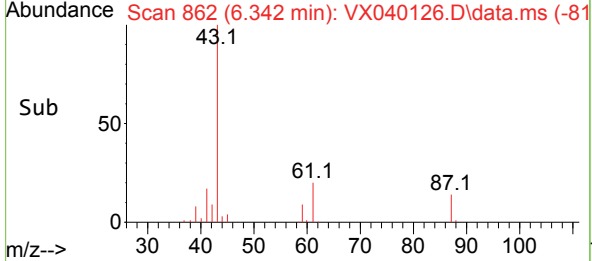
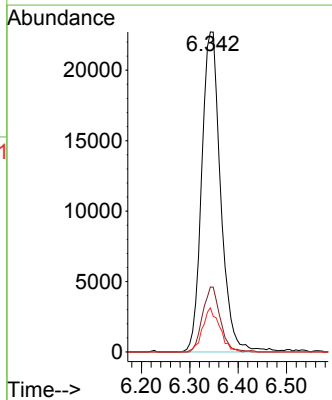
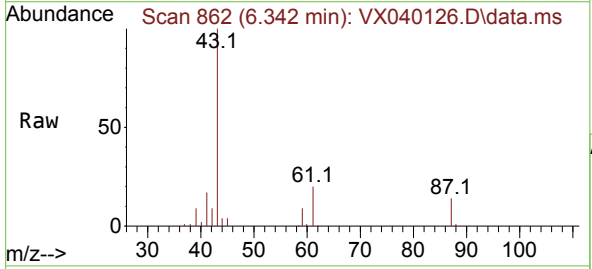


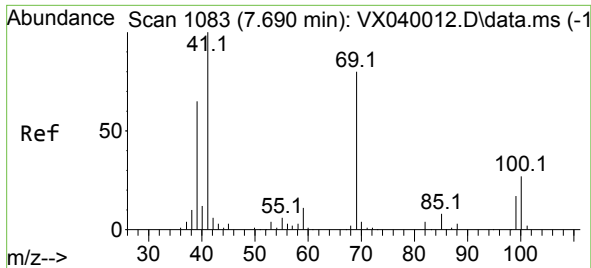
Tgt Ion:117 Resp: 9872
 Ion Ratio Lower Upper
 117 100
 119 5.1 78.2 117.2#
 121 0.0 24.4 36.6#



#43
 Isopropyl Acetate
 Concen: 27.515 ug/l
 RT: 6.342 min Scan# 862
 Delta R.T. 0.006 min
 Lab File: VX040126.D
 Acq: 05 Feb 2024 19:08

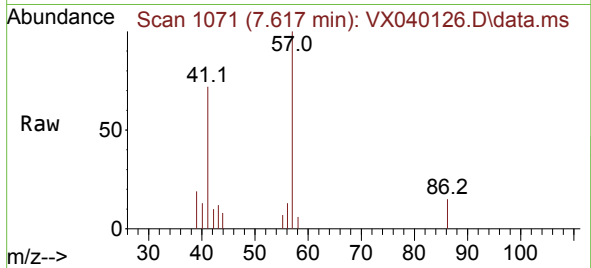
Tgt Ion: 43 Resp: 61912
 Ion Ratio Lower Upper
 43 100
 61 18.9 15.2 22.8
 87 12.4 9.8 14.6



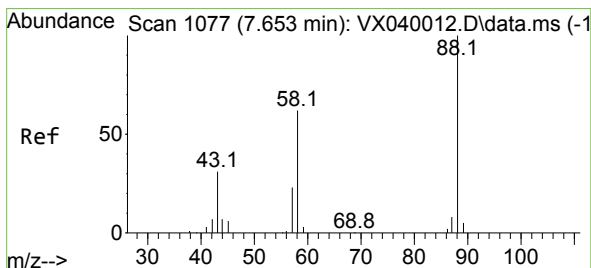
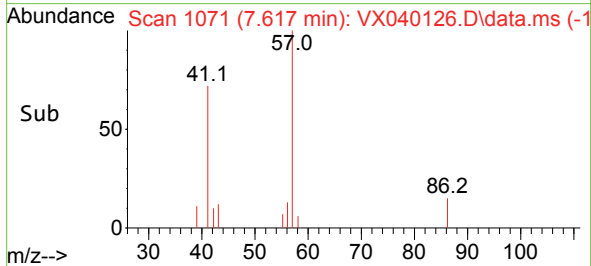
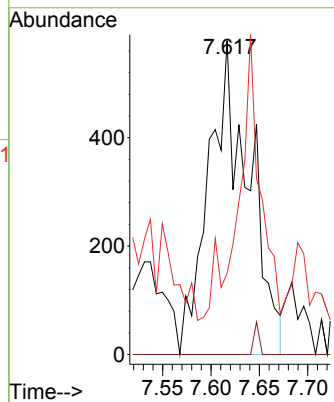


#48
 Methyl methacrylate
 Concen: 1.501 ug/l
 RT: 7.617 min Scan# 1101
 Delta R.T. -0.073 min
 Lab File: VX040126.D
 Acq: 05 Feb 2024 19:08

Instrument : MSVOA_X
 ClientSampleId : TP-6

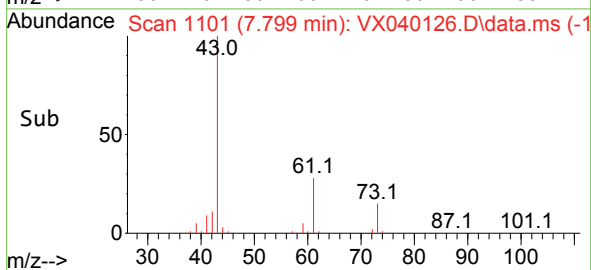
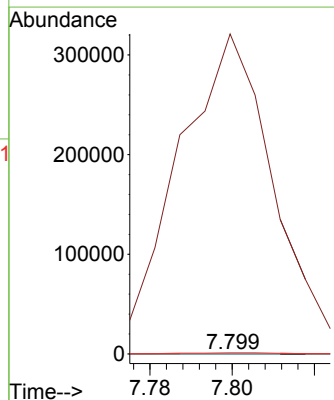
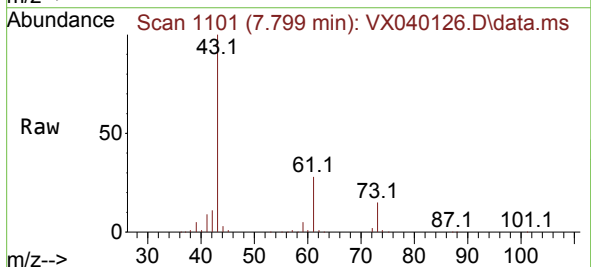


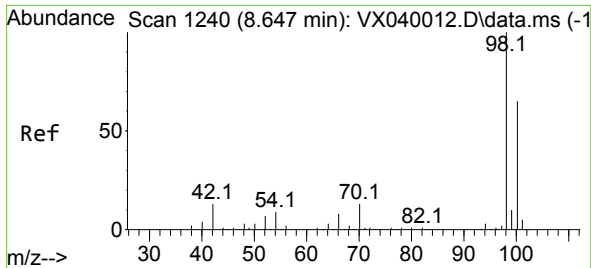
Tgt Ion: 41 Resp: 1664
 Ion Ratio Lower Upper
 41 100
 69 0.0 59.2 88.8#
 39 0.0 47.7 71.5#



#49
 1,4-Dioxane
 Concen: 0.955 ug/l
 RT: 7.799 min Scan# 1101
 Delta R.T. 0.146 min
 Lab File: VX040126.D
 Acq: 05 Feb 2024 19:08

Tgt Ion: 88 Resp: 23
 Ion Ratio Lower Upper
 88 100
 43 2329221.7 0.0 0.0#
 58 9047.8 60.1 90.1#

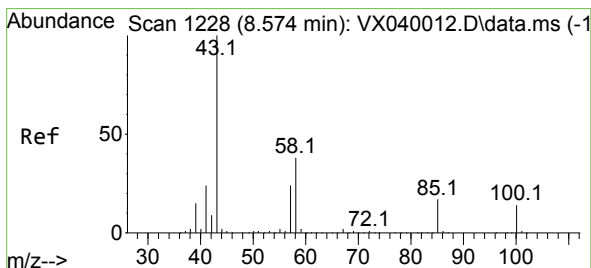
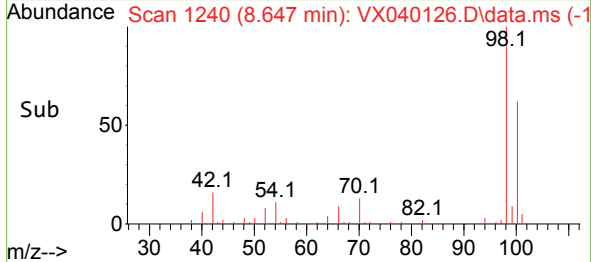
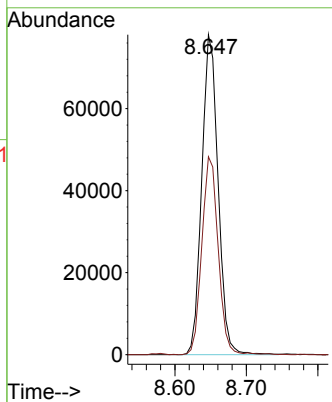
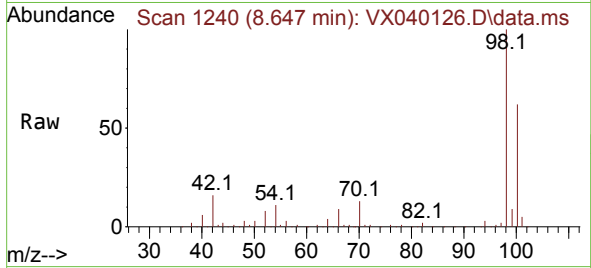




#50
 Toluene-d8
 Concen: 36.570 ug/l
 RT: 8.647 min Scan# 11
 Delta R.T. 0.000 min
 Lab File: VX040126.D
 Acq: 05 Feb 2024 19:08

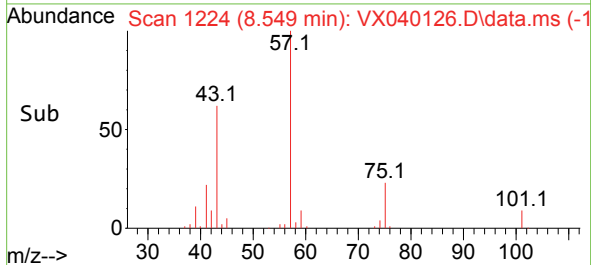
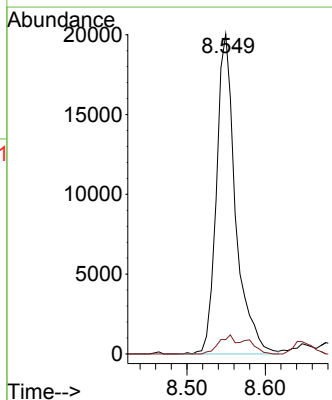
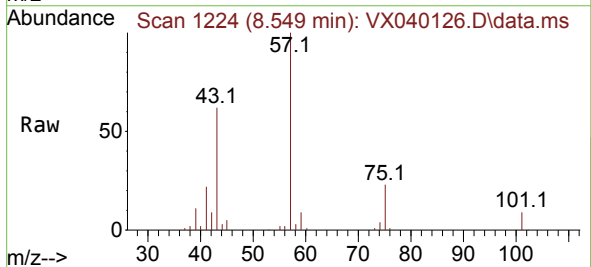
Instrument :
 MSVOA_X
 ClientSampleId :
 TP-6

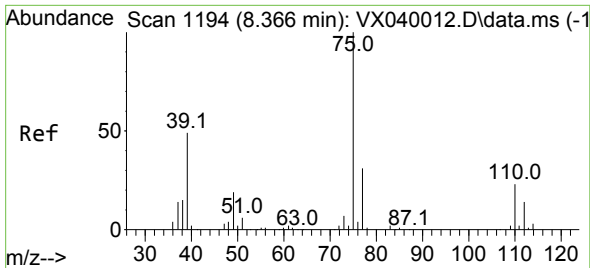
Tgt Ion: 98 Resp: 123550
 Ion Ratio Lower Upper
 98 100
 100 62.2 53.1 79.7



#51
 4-Methyl-2-Pentanone
 Concen: 22.157 ug/l
 RT: 8.549 min Scan# 1224
 Delta R.T. -0.024 min
 Lab File: VX040126.D
 Acq: 05 Feb 2024 19:08

Tgt Ion: 43 Resp: 34034
 Ion Ratio Lower Upper
 43 100
 58 5.6 30.4 45.6#

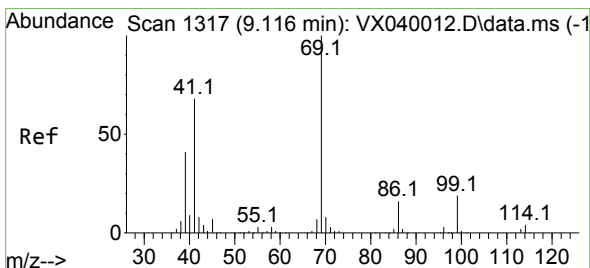
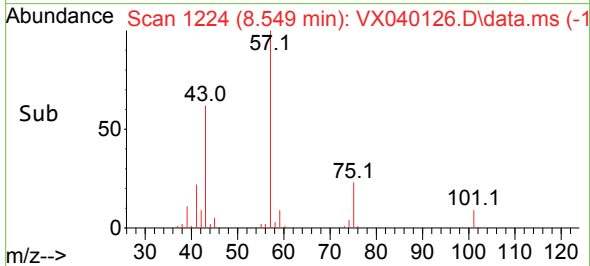
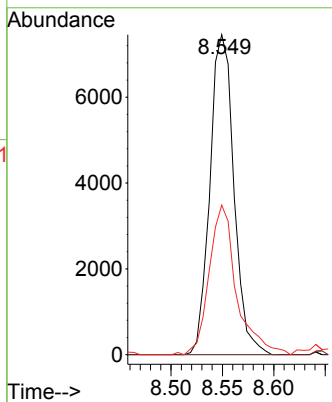
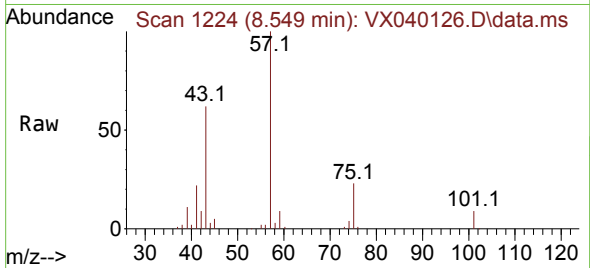




#54
 cis-1,3-Dichloropropene
 Concen: 8.130 ug/l
 RT: 8.549 min Scan# 1194
 Delta R.T. 0.183 min
 Lab File: VX040126.D
 Acq: 05 Feb 2024 19:08

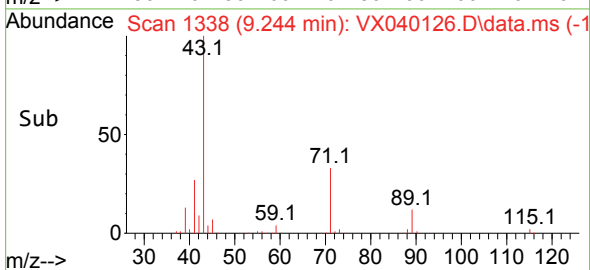
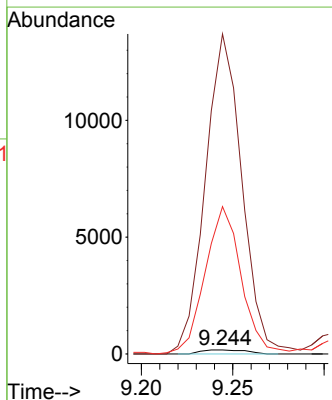
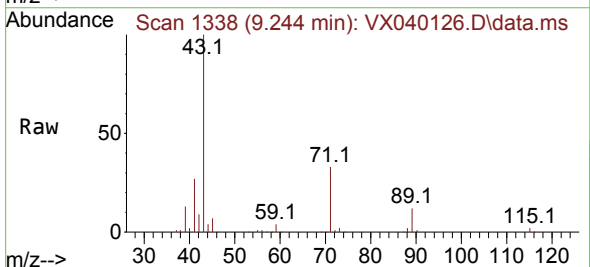
Instrument : MSVOA_X
 ClientSampleId : TP-6

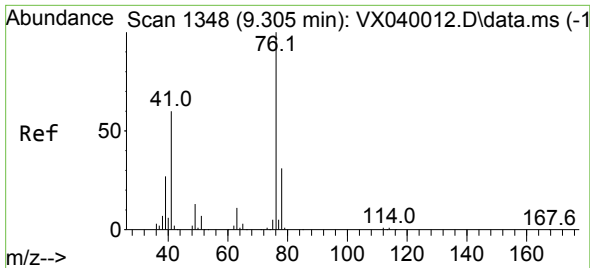
Tgt Ion	Resp	Lower	Upper
75	12085		
75	100		
77	0.0	25.3	37.9#
39	46.0	46.7	70.1#



#56
 Ethyl methacrylate
 Concen: 0.206 ug/l
 RT: 9.244 min Scan# 1338
 Delta R.T. 0.128 min
 Lab File: VX040126.D
 Acq: 05 Feb 2024 19:08

Tgt Ion	Resp	Lower	Upper
69	296		
69	100		
41	6470.6	56.8	85.2#
39	2941.9	32.0	48.0#

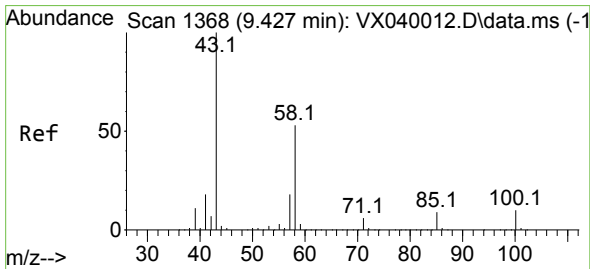
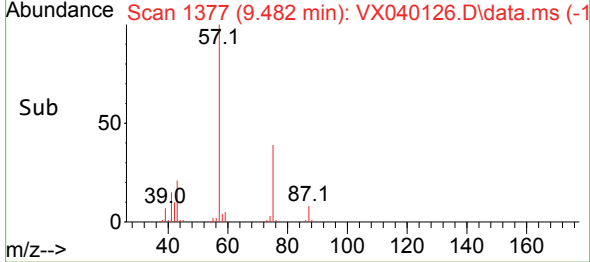
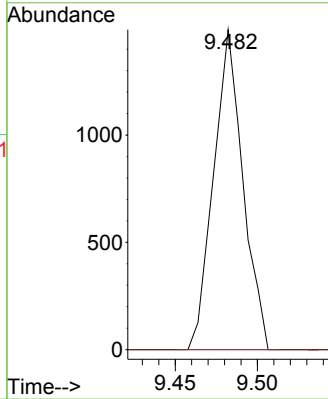
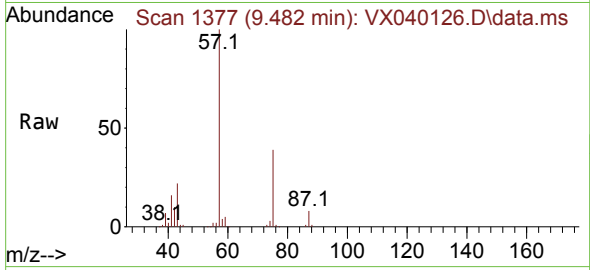




#57
 1,3-Dichloropropane
 Concen: 1.143 ug/l
 RT: 9.482 min Scan# 1377
 Delta R.T. 0.177 min
 Lab File: VX040126.D
 Acq: 05 Feb 2024 19:08

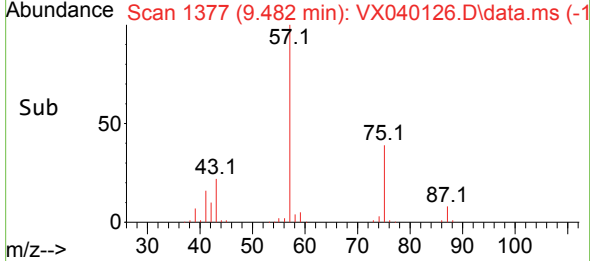
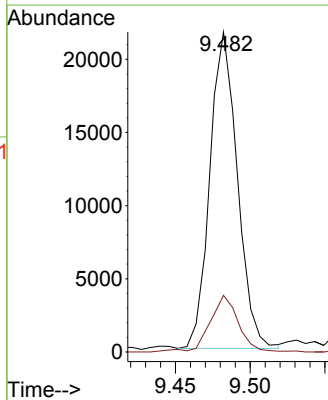
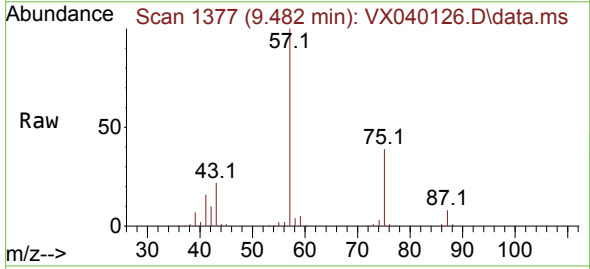
Instrument : MSVOA_X
 ClientSampleId : TP-6

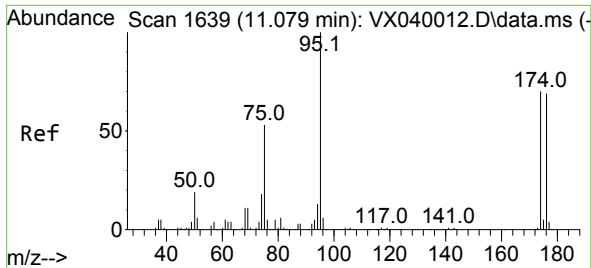
Tgt Ion: 76 Resp: 1848
 Ion Ratio Lower Upper
 76 100
 78 0.0 26.1 39.1#



#59
 2-Hexanone
 Concen: 22.606 ug/l
 RT: 9.482 min Scan# 1377
 Delta R.T. 0.055 min
 Lab File: VX040126.D
 Acq: 05 Feb 2024 19:08

Tgt Ion: 43 Resp: 27685
 Ion Ratio Lower Upper
 43 100
 58 18.6 26.2 78.5#



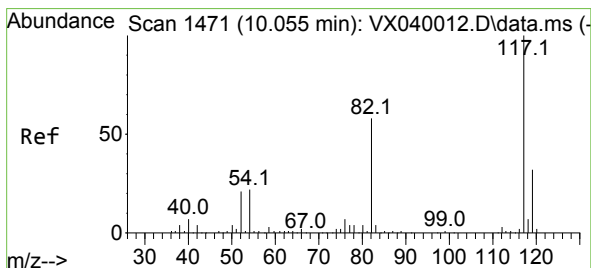
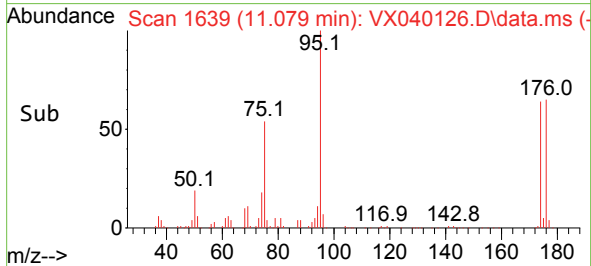
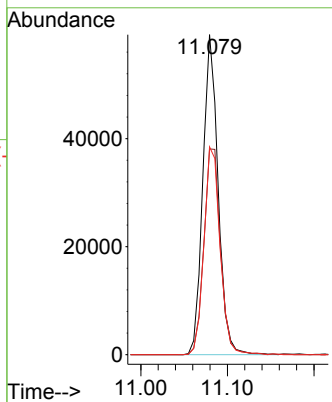
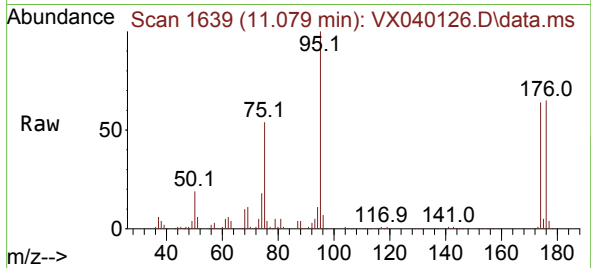


#62
 4-Bromofluorobenzene
 Concen: 55.760 ug/l
 RT: 11.079 min Scan# 1639
 Delta R.T. 0.000 min
 Lab File: VX040126.D
 Acq: 05 Feb 2024 19:08

Instrument :
 MSVOA_X
 ClientSampleId :
 TP-6

Tgt Ion: 95 Resp: 72536

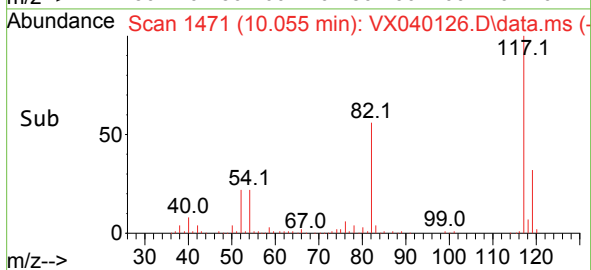
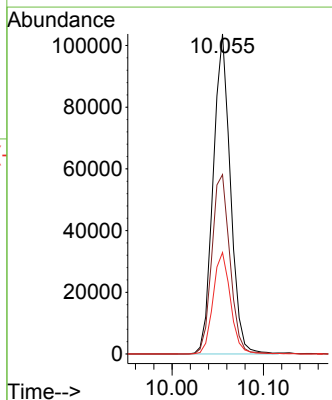
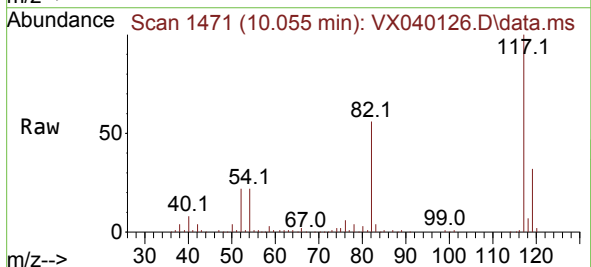
Ion	Ratio	Lower	Upper
95	100		
174	70.1	0.0	135.6
176	68.7	0.0	131.0

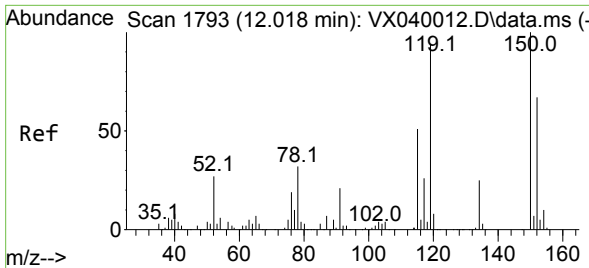


#63
 Chlorobenzene-d5
 Concen: 50.000 ug/l
 RT: 10.055 min Scan# 1471
 Delta R.T. 0.000 min
 Lab File: VX040126.D
 Acq: 05 Feb 2024 19:08

Tgt Ion: 117 Resp: 135969

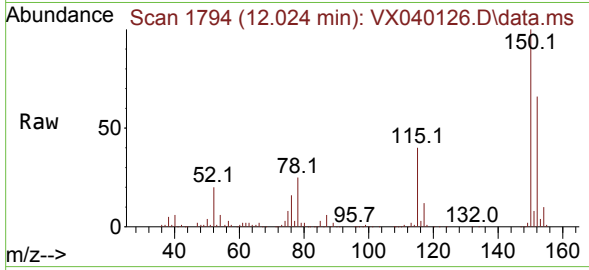
Ion	Ratio	Lower	Upper
117	100		
82	56.1	46.2	69.4
119	31.7	25.5	38.3



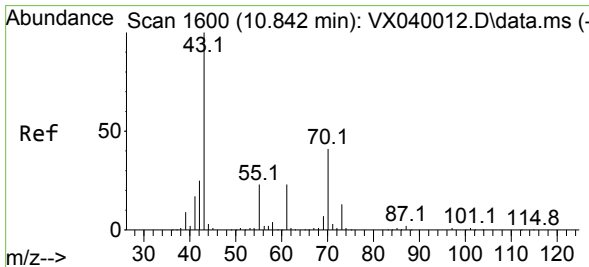
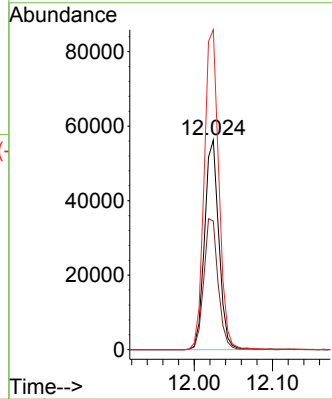
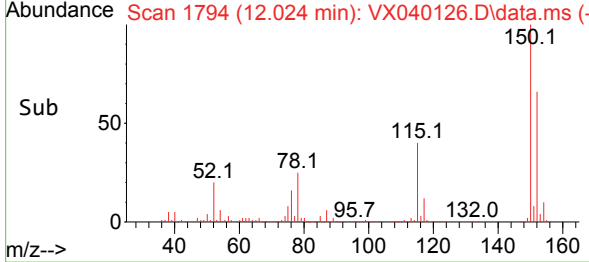


#72
 1,4-Dichlorobenzene-d4
 Concen: 50.000 ug/l
 RT: 12.024 min Scan# 11
 Delta R.T. 0.006 min
 Lab File: VX040126.D
 Acq: 05 Feb 2024 19:08

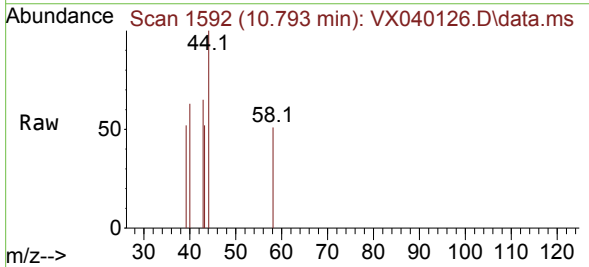
Instrument :
 MSVOA_X
 ClientSampleId :
 TP-6



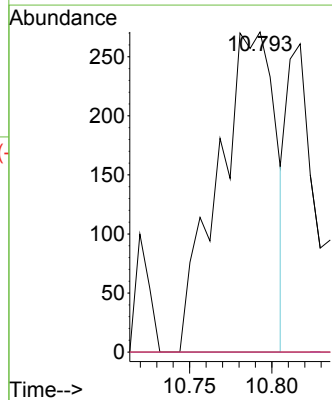
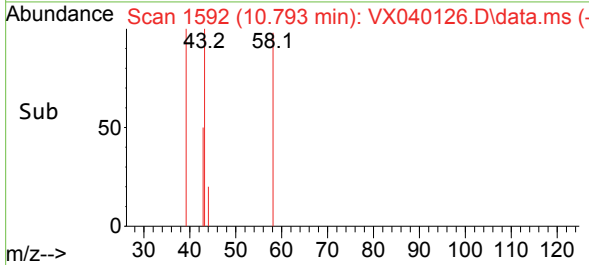
Tgt Ion:152 Resp: 71048
 Ion Ratio Lower Upper
 152 100
 115 63.1 43.3 129.9
 150 156.8 0.0 345.0

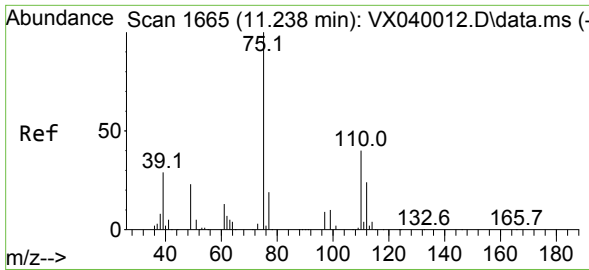


#74
 N-amy1 acetate
 Concen: 0.483 ug/l
 RT: 10.793 min Scan# 1592
 Delta R.T. -0.049 min
 Lab File: VX040126.D
 Acq: 05 Feb 2024 19:08



Tgt Ion: 43 Resp: 658
 Ion Ratio Lower Upper
 43 100
 70 0.0 32.9 49.3#
 55 0.0 19.3 28.9#
 61 0.0 18.8 28.2#

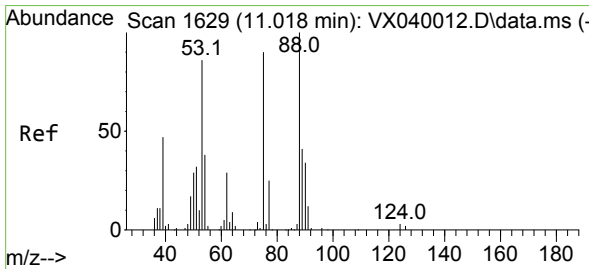
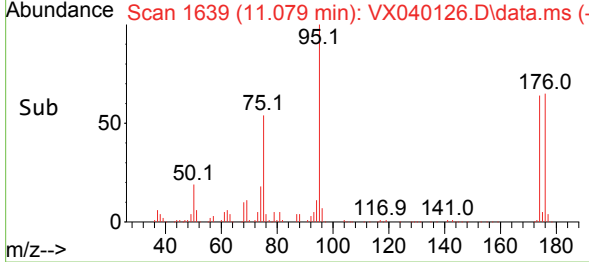
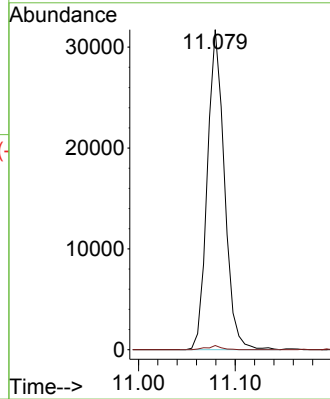
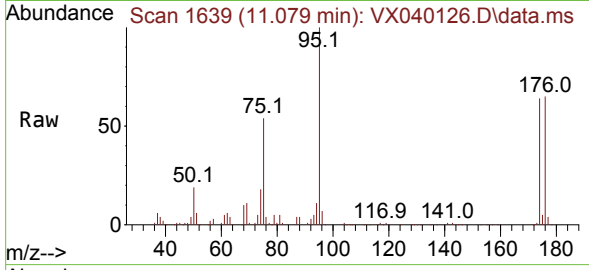




#76
 1,2,3-Trichloropropane
 Concen: 25.844 ug/l
 RT: 11.079 min Scan# 1639
 Delta R.T. -0.158 min
 Lab File: VX040126.D
 Acq: 05 Feb 2024 19:08

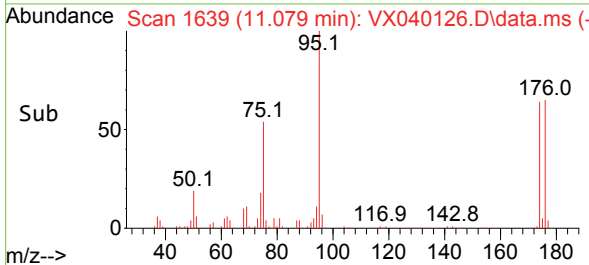
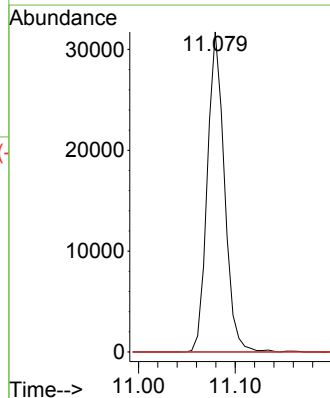
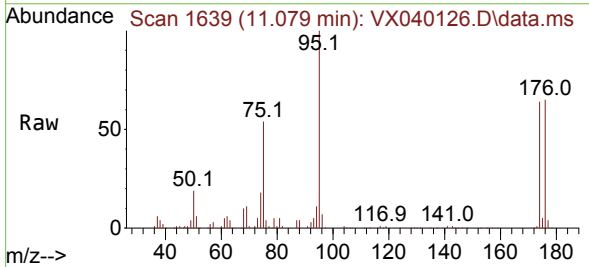
Instrument : MSVOA_X
 ClientSampleId : TP-6

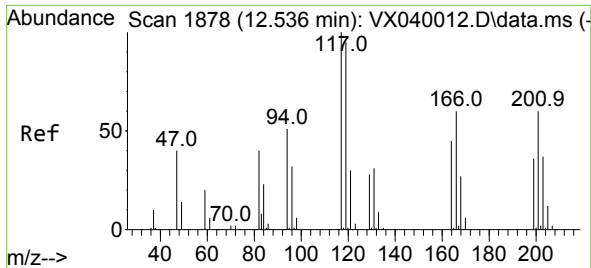
Tgt Ion: 75 Resp: 39101
 Ion Ratio Lower Upper
 75 100
 77 1.1 19.1 57.5#



#81
 trans-1,4-Dichloro-2-butene
 Concen: 76.003 ug/l
 RT: 11.079 min Scan# 1639
 Delta R.T. 0.061 min
 Lab File: VX040126.D
 Acq: 05 Feb 2024 19:08

Tgt Ion: 75 Resp: 39101
 Ion Ratio Lower Upper
 75 100
 53 0.0 90.5 135.7#
 89 0.0 36.9 55.3#





#90
 Hexachloroethane
 Concen: Below Cal
 RT: 12.652 min Scan# 11
 Delta R.T. 0.116 min
 Lab File: VX040126.D
 Acq: 05 Feb 2024 19:08

Instrument :
 MSVOA_X
 ClientSampleId :
 TP-6

Tgt Ion:117 Resp: 25
 Ion Ratio Lower Upper
 117 100
 201 0.0 32.9 98.6#

