

Data Path : W:\HPCHEM1\MSVOA X\DATA\VX030118\
 Data File : VX000180.D
 Acq On : 01 Mar 2018 12:50
 Operator : JC/MD
 Sample : VX0301WBL01
 Misc : 5.0mL/MSVOA X/WATER
 ALS Vial : 1 Sample Multiplier: 1

Instrument :
 Client Sampled :
 VX0301WBL01

Quant Time: Mar 02 03:39:35 2018
 Quant Method : W:\HPCHEM1\MSVOA X\METHOD\624X022018W.M
 Quant Title : METHOD 624 VOLATILE ORGANIC ANALYSIS
 QLast Update : Wed Feb 21 06:17:26 2018
 Response via : Initial Calibration

Internal Standards	R.T.	QIon	Response	Conc	Units	Dev(Min)
1) Bromochloromethane	5.03	128	24050	30.00	ug/l	0.00
28) 1,4-Difluorobenzene	6.87	114	151043	30.00	ug/l	0.00
57) Chlorobenzene-d5	10.12	117	145505	30.00	ug/l	0.00

System Monitoring Compounds

27) 1,2-Dichloroethane-d4	6.08	65	61862	33.24	ug/l	0.00
Spiked Amount	30.000	Range	50 - 169	Recovery	=	110.80%
60) 4-Bromofluorobenzene	11.15	95	68178	28.64	ug/l	0.00
Spiked Amount	30.000	Range	56 - 143	Recovery	=	95.47%
63) Toluene-d8	8.72	98	189824	30.46	ug/l	0.00
Spiked Amount	30.000	Range	66 - 137	Recovery	=	101.53%

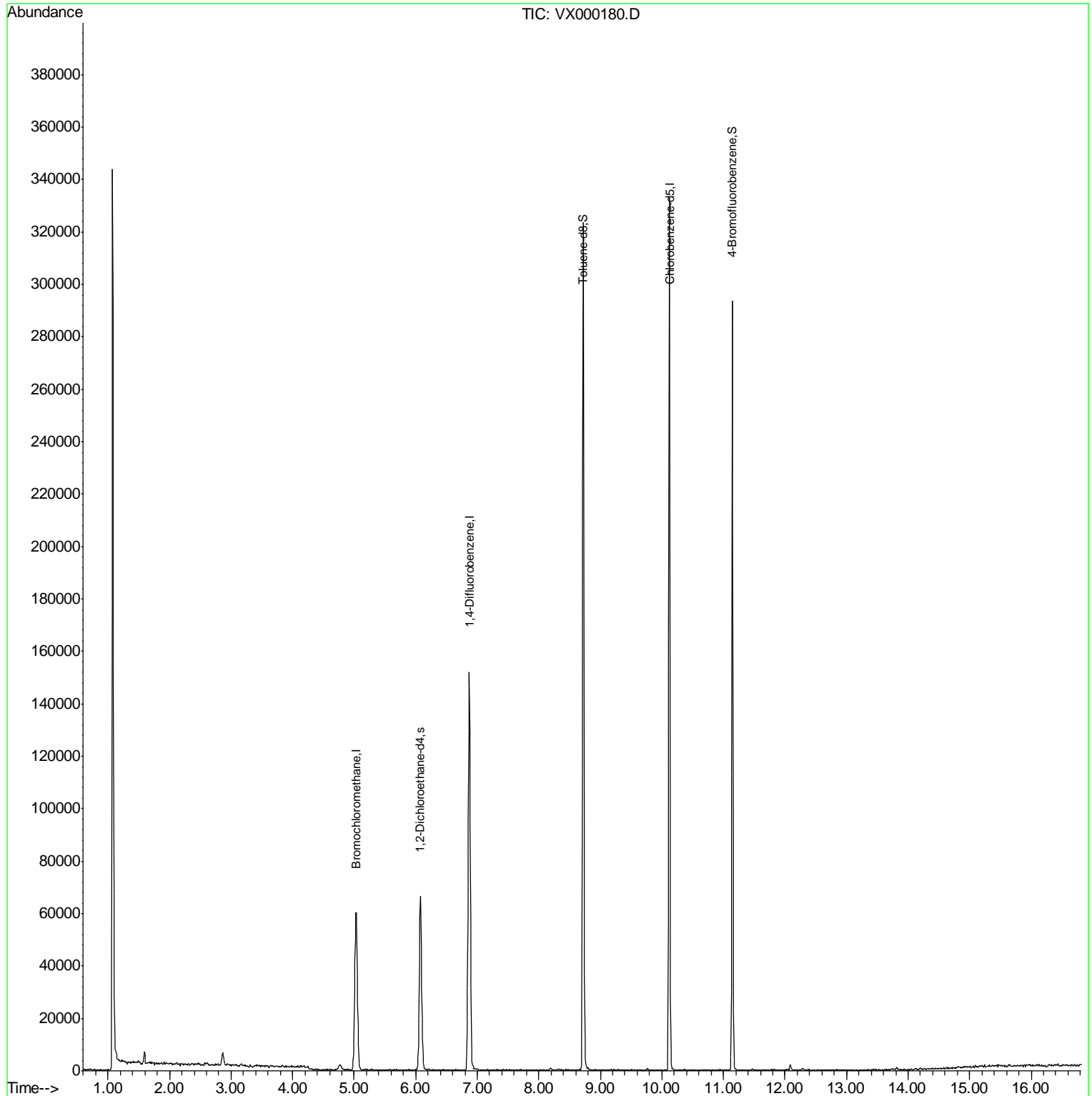
Target Compounds Ovalue

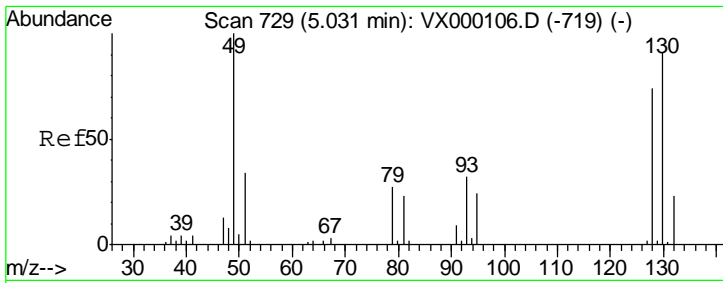
(#) = qualifier out of range (m) = manual integration (+) = signals summed

Data Path : W:\HPCHEM1\MSVOA X\DATA\VX030118\
Data File : VX000180.D
Acq On : 01 Mar 2018 12:50
Operator : JC/MD
Sample : VX0301WBL01
Misc : 5.0mL/MSVOA X/WATER
ALS Vial : 1 Sample Multiplier: 1

Instrument :
Client Sample ID :
VX0301WBL01

Quant Time: Mar 02 03:39:35 2018
Quant Method : W:\HPCHEM1\MSVOA X\METHOD\624X022018W.M
Quant Title : METHOD 624 VOLATILE ORGANIC ANALYSIS
QLast Update : Wed Feb 21 06:17:26 2018
Response via : Initial Calibration

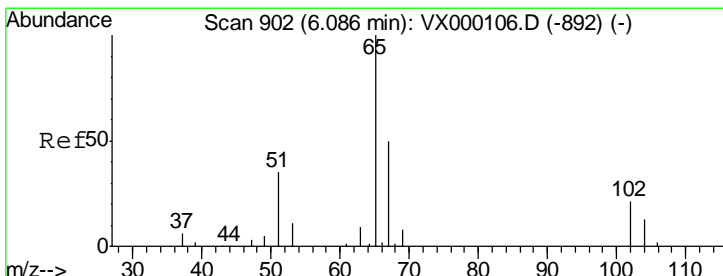
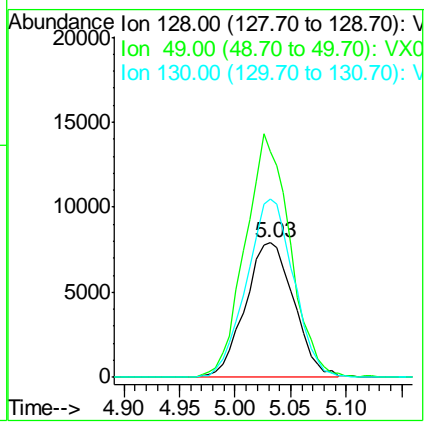
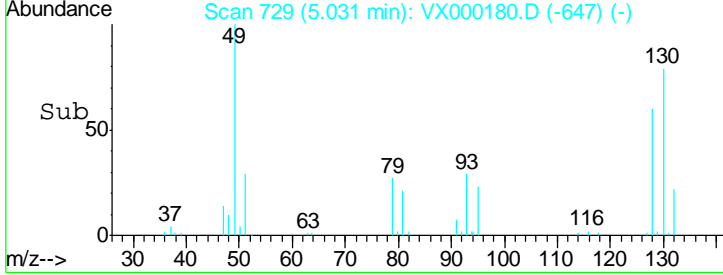
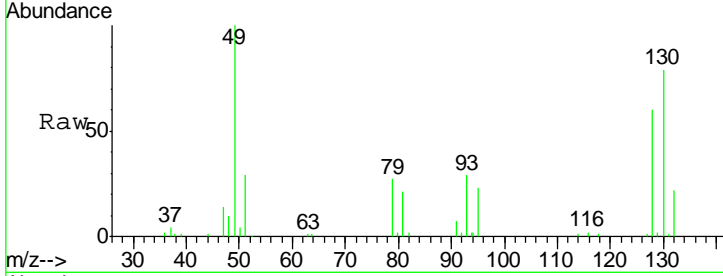




#1
 Bromochloromethane
 Concen: 30.00 ug/l
 RT: 5.03 min Scan# 729
 Delta R.T. 0.00 min
 Lab File: VX000180.D
 Acq: 01 Mar 2018 12:50

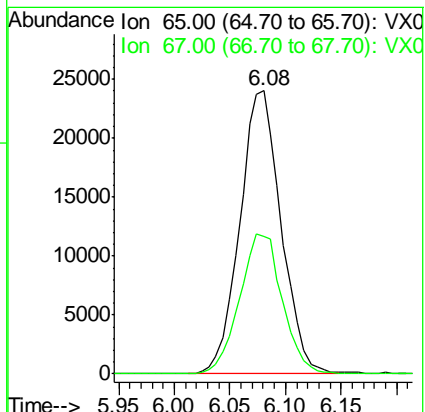
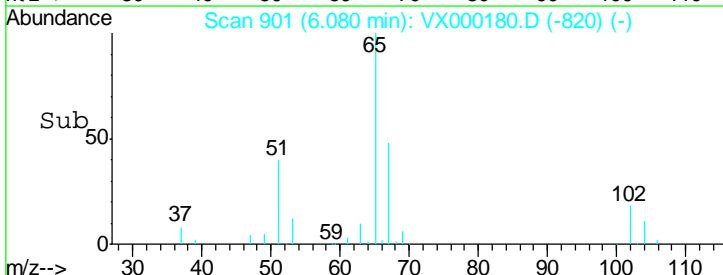
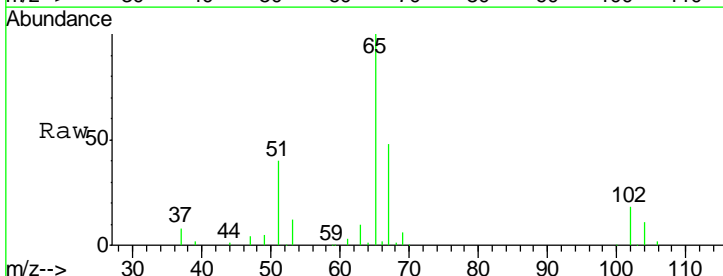
Instrument :
ClientSampled :
 VX0301WBL01

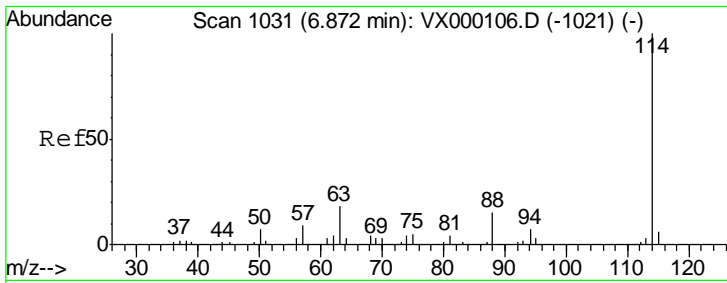
Tgt Ion	Resp	Lower	Upper
128	100		
49	166.6	0.0	378.3
130	128.2	0.0	324.3



#27
 1,2-Dichloroethane-d4
 Concen: 33.24 ug/l
 RT: 6.08 min Scan# 901
 Delta R.T. -0.01 min
 Lab File: VX000180.D
 Acq: 01 Mar 2018 12:50

Tgt Ion	Resp	Lower	Upper
65	100		
67	51.0	41.4	62.2

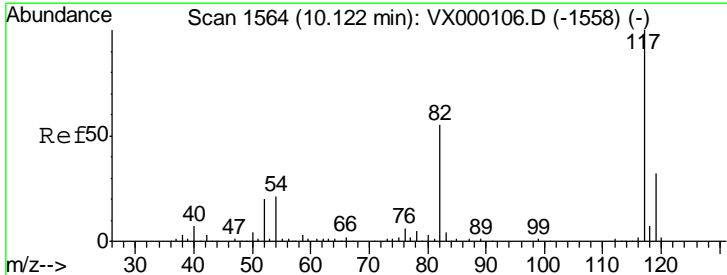
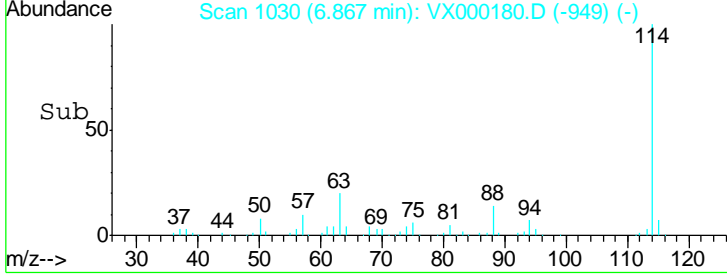
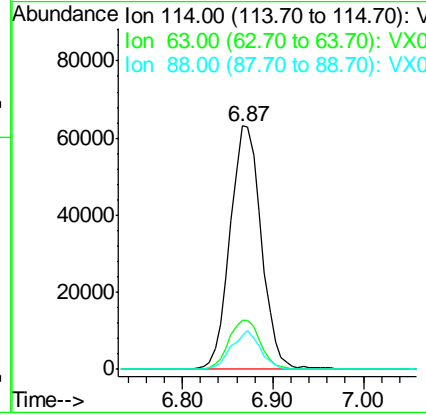
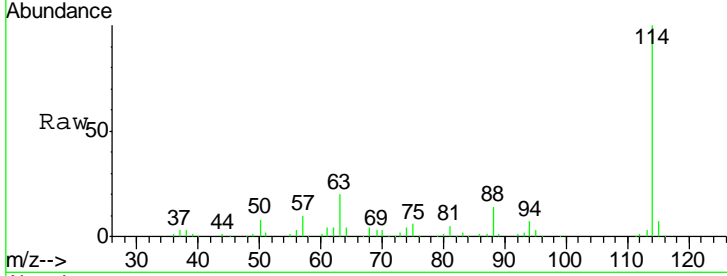




#28
 1,4-Difluorobenzene
 Concen: 30.00 ug/l
 RT: 6.87 min Scan# 1030
 Delta R.T. -0.01 min
 Lab File: VX000180.D
 Acq: 01 Mar 2018 12:50

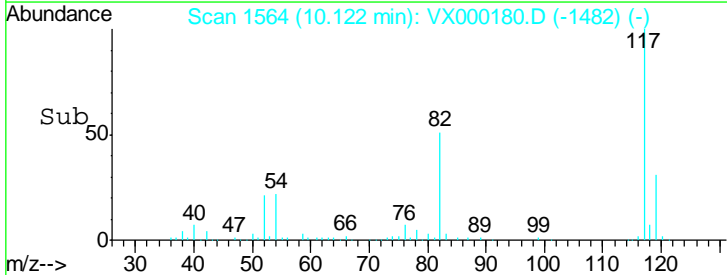
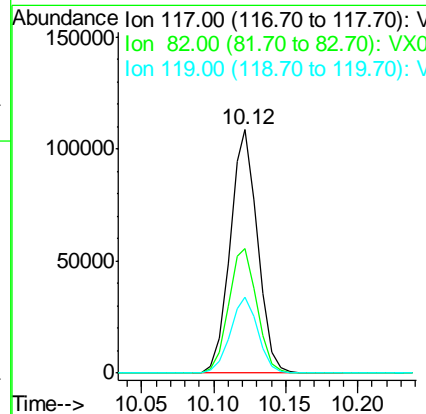
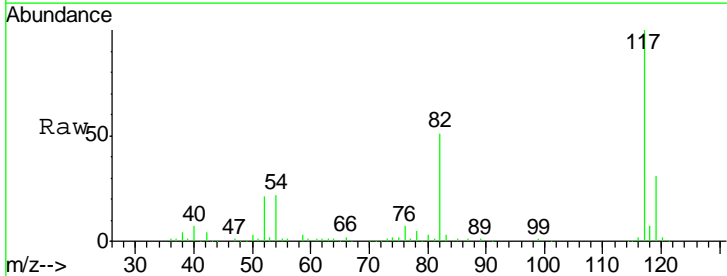
Instrument :
 ClientSampleId :
 VX0301WBL01

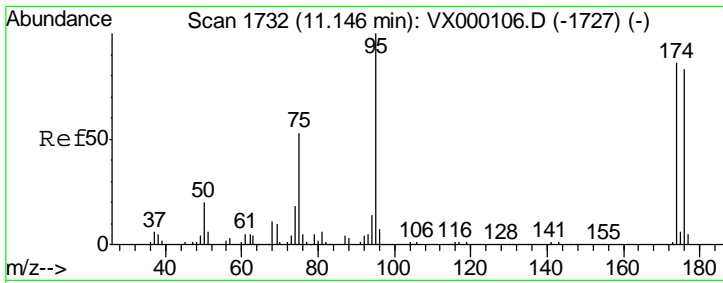
Tgt Ion	Resp	Lower	Upper
114	151043		
63	20.6	15.0	22.4
88	14.6	11.8	17.8



#57
 Chlorobenzene-d5
 Concen: 30.00 ug/l
 RT: 10.12 min Scan# 1564
 Delta R.T. 0.00 min
 Lab File: VX000180.D
 Acq: 01 Mar 2018 12:50

Tgt Ion	Resp	Lower	Upper
117	145505		
82	52.7	43.0	64.4
119	31.4	25.8	38.8

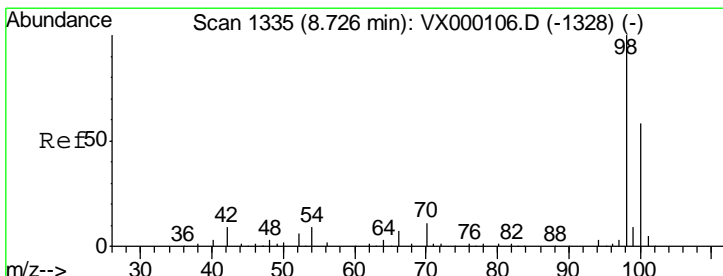
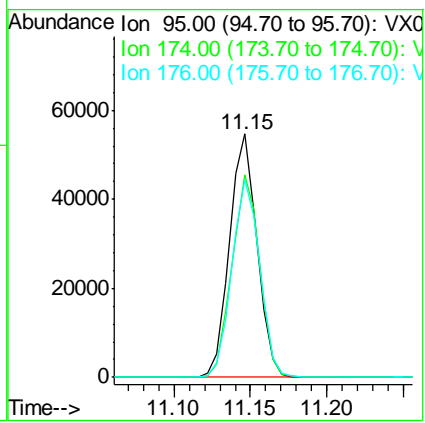
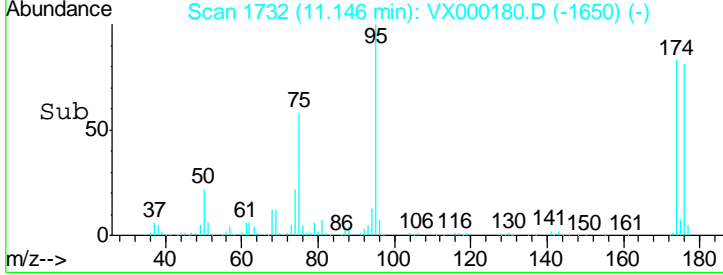
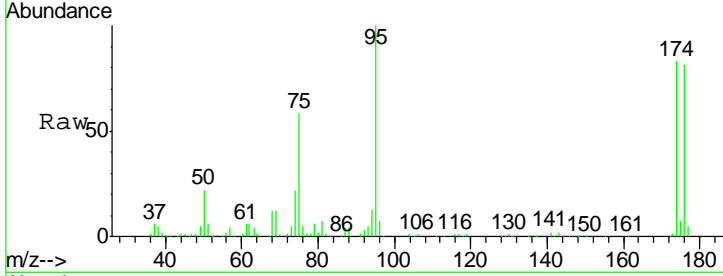




#60
 4-Bromofluorobenzene
 Concen: 28.64 ug/l
 RT: 11.15 min Scan# 1732
 Delta R.T. 0.00 min
 Lab File: VX000180.D
 Acq: 01 Mar 2018 12:50

Instrument :
 Client Sampled :
 VX0301WBL01

Tgt Ion	Resp	Lower	Upper
95	68178		
174	83.6	71.1	106.7
176	82.0	69.3	103.9



#63
 Toluene-d8
 Concen: 30.46 ug/l
 RT: 8.72 min Scan# 1334
 Delta R.T. -0.01 min
 Lab File: VX000180.D
 Acq: 01 Mar 2018 12:50

Tgt Ion	Resp	Lower	Upper
98	189824		
100	62.5	50.0	75.0

