

Data Path : W:\HPCHEM1\MSVOA X\DATA\VX030818\  
 Data File : VX000215.D  
 Acq On : 08 Mar 2018 10:29  
 Operator : JC/MD  
 Sample : VX0308WBL01  
 Misc : 5.0mL/MSVOA X/WATER  
 ALS Vial : 1 Sample Multiplier: 1

Instrument :  
 MSVOA\_X  
 ClientSampleId :  
 VX0308WBL01

Quant Time: Mar 08 13:07:36 2018  
 Quant Method : W:\HPCHEM1\MSVOA X\METHOD\624X022018W.M  
 Quant Title : METHOD 624 VOLATILE ORGANIC ANALYSIS  
 QLast Update : Wed Feb 21 06:17:26 2018  
 Response via : Initial Calibration

Internal Standards	R.T.	QIon	Response	Conc	Units	Dev(Min)
1) Bromochloromethane	5.03	128	24647	30.00	ug/l	0.00
28) 1,4-Difluorobenzene	6.87	114	148995	30.00	ug/l	0.00
57) Chlorobenzene-d5	10.12	117	140356	30.00	ug/l	0.00

System Monitoring Compounds

27) 1,2-Dichloroethane-d4	6.07	65	61361	32.17	ug/l	-0.01
Spiked Amount	30.000	Range	50 - 169	Recovery	=	107.23%
60) 4-Bromofluorobenzene	11.15	95	67076	29.21	ug/l	0.00
Spiked Amount	30.000	Range	56 - 143	Recovery	=	97.37%
63) Toluene-d8	8.72	98	187053	31.11	ug/l	0.00
Spiked Amount	30.000	Range	66 - 137	Recovery	=	103.70%

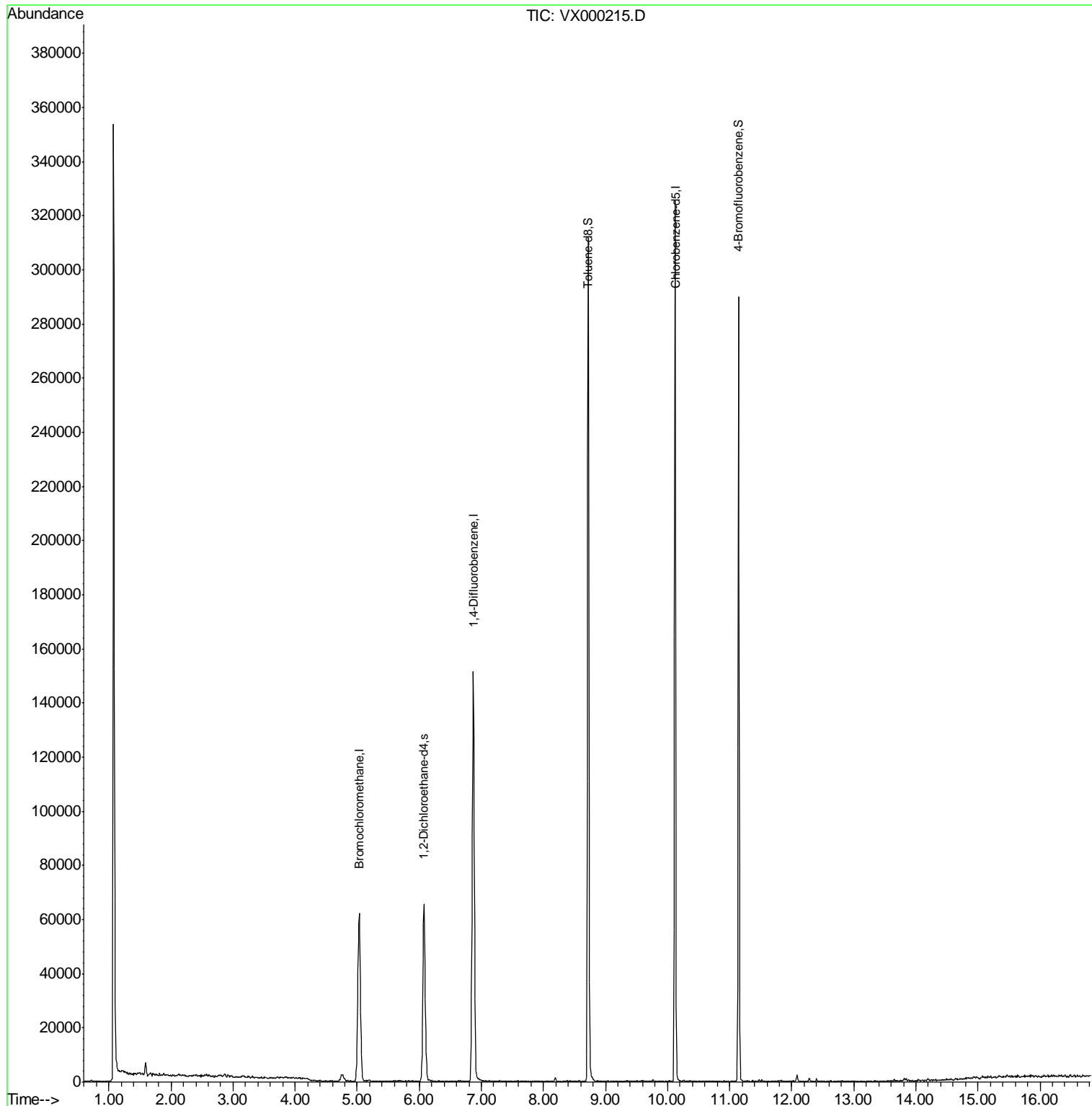
Target Compounds Ovalue

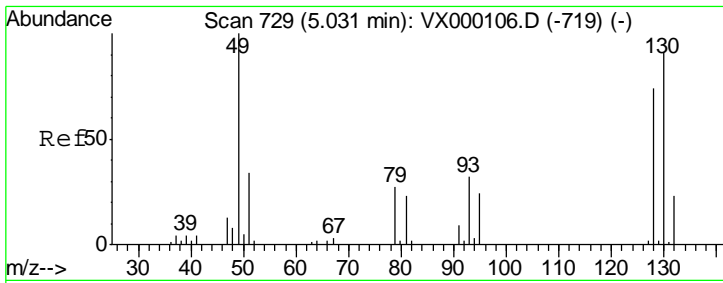
(#) = qualifier out of range (m) = manual integration (+) = signals summed

Data Path : W:\HPCHEM1\MSVOA X\DATA\VX030818\  
 Data File : VX000215.D  
 Acq On : 08 Mar 2018 10:29  
 Operator : JC/MD  
 Sample : VX0308WBL01  
 Misc : 5.0mL/MSVOA X/WATER  
 ALS Vial : 1 Sample Multiplier: 1

Instrument :  
 MSVOA\_X  
 ClientSampleID :  
 VX0308WBL01

Quant Time: Mar 08 13:07:36 2018  
 Quant Method : W:\HPCHEM1\MSVOA X\METHOD\624X022018W.M  
 Quant Title : METHOD 624 VOLATILE ORGANIC ANALYSIS  
 QLast Update : Wed Feb 21 06:17:26 2018  
 Response via : Initial Calibration

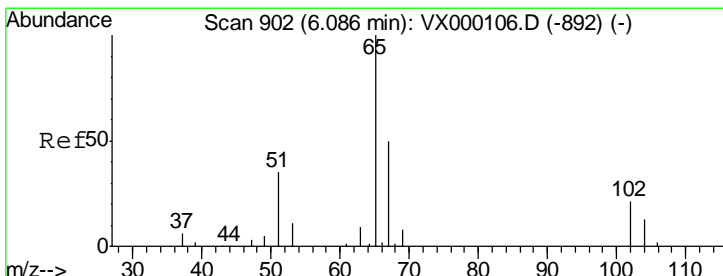
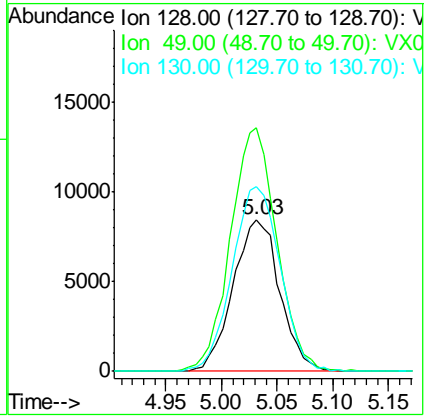
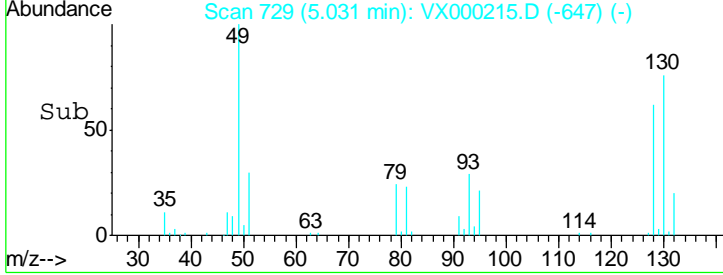
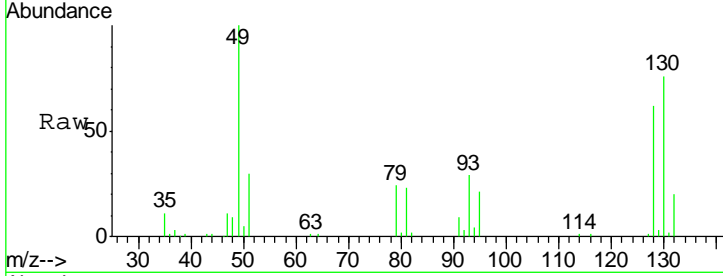




#1  
 Bromochloromethane  
 Concen: 30.00 ug/l  
 RT: 5.03 min Scan# 729  
 Delta R.T. 0.00 min  
 Lab File: VX000215.D  
 Acq: 08 Mar 2018 10:29

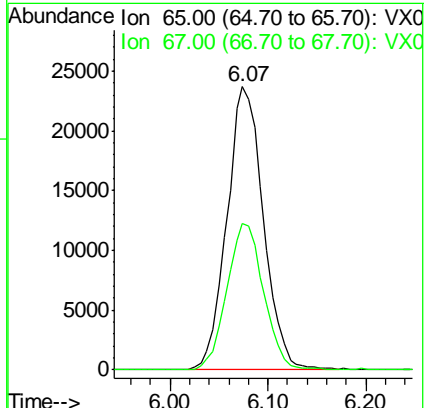
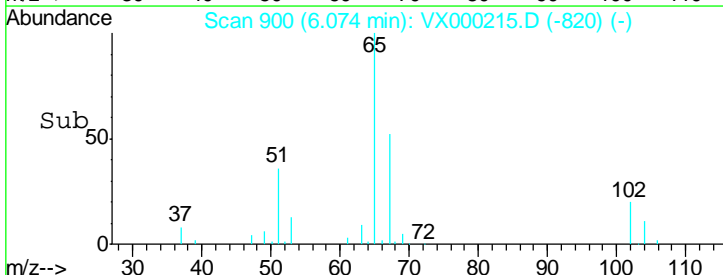
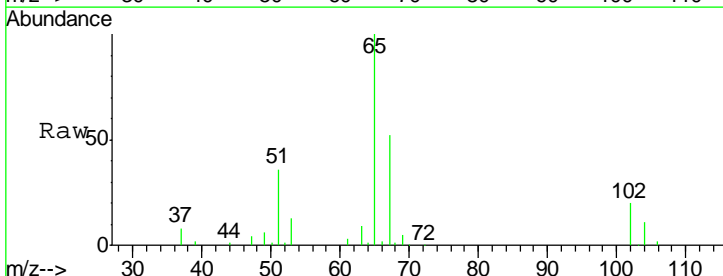
**Instrument :**  
 MSVOA\_X  
**ClientSampled :**  
 VX0308WBL01

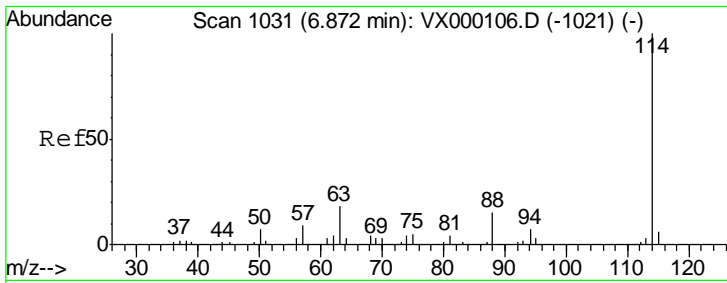
Tgt Ion	Resp	Lower	Upper
128	100		
49	159.2	0.0	378.3
130	125.6	0.0	324.3



#27  
 1,2-Dichloroethane-d4  
 Concen: 32.17 ug/l  
 RT: 6.07 min Scan# 900  
 Delta R.T. -0.01 min  
 Lab File: VX000215.D  
 Acq: 08 Mar 2018 10:29

Tgt Ion	Resp	Lower	Upper
65	100		
67	51.8	41.4	62.2

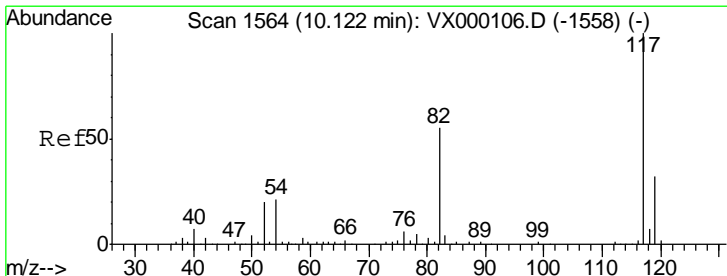
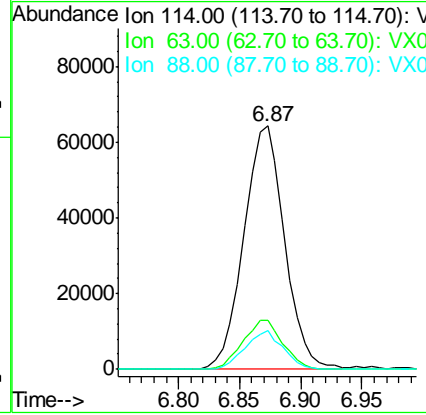
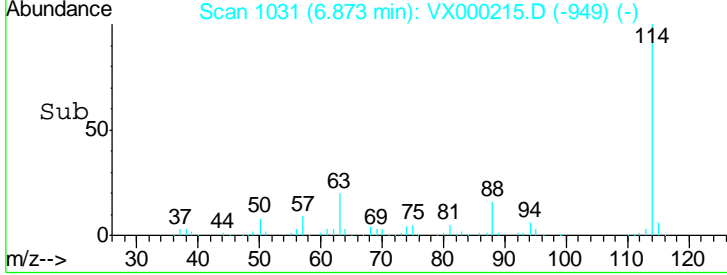
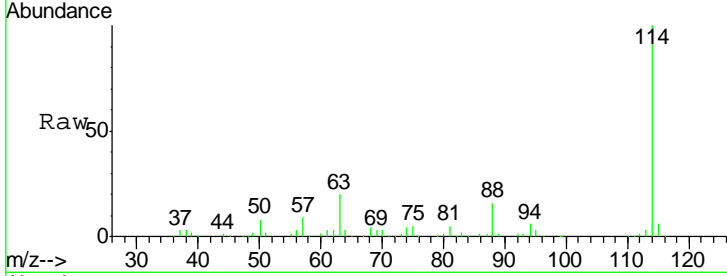




#28  
 1,4-Difluorobenzene  
 Concen: 30.00 ug/l  
 RT: 6.87 min Scan# 1031  
 Delta R.T. 0.00 min  
 Lab File: VX000215.D  
 Acq: 08 Mar 2018 10:29

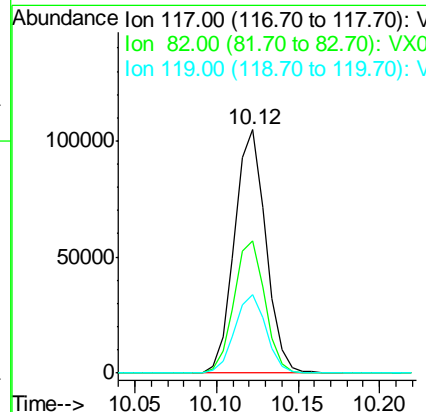
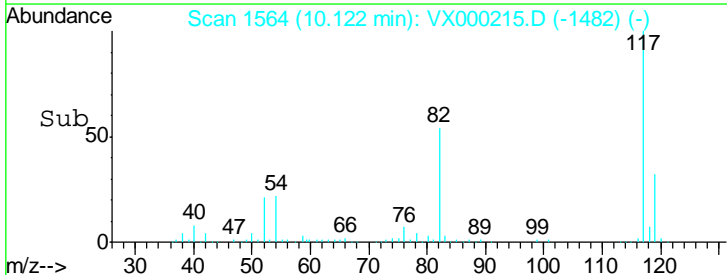
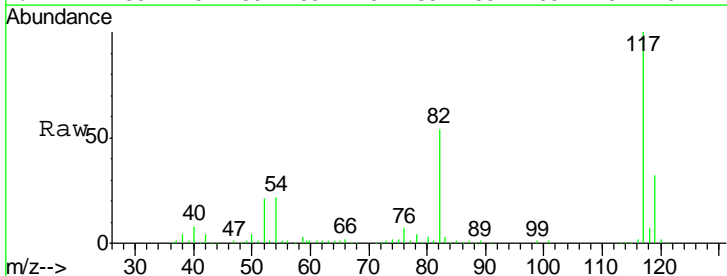
Instrument :  
 MSVOA\_X  
 ClientSampled :  
 VX0308WBL01

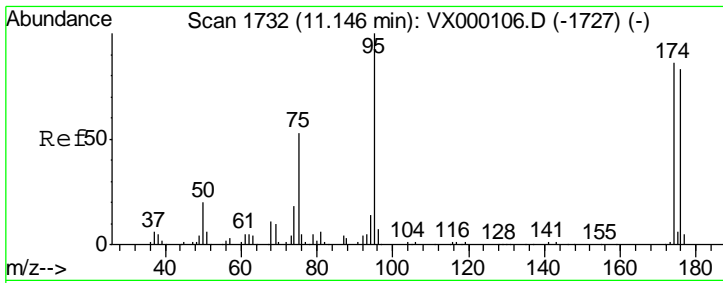
Tgt Ion	Resp	Lower	Upper
114	100		
63	19.9	15.0	22.4
88	14.8	11.8	17.8



#57  
 Chlorobenzene-d5  
 Concen: 30.00 ug/l  
 RT: 10.12 min Scan# 1564  
 Delta R.T. 0.00 min  
 Lab File: VX000215.D  
 Acq: 08 Mar 2018 10:29

Tgt Ion	Resp	Lower	Upper
117	100		
82	53.9	43.0	64.4
119	32.1	25.8	38.8

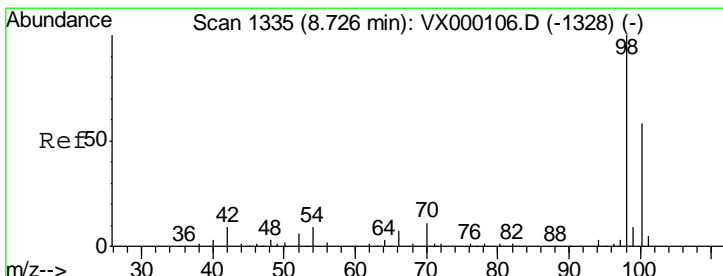
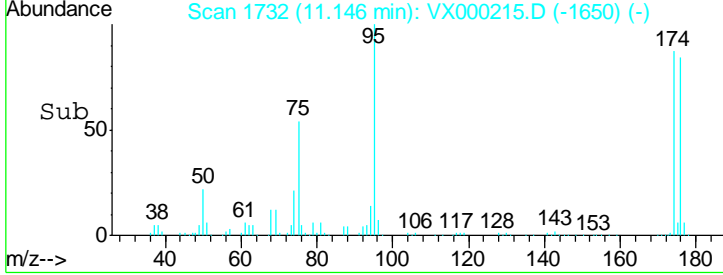
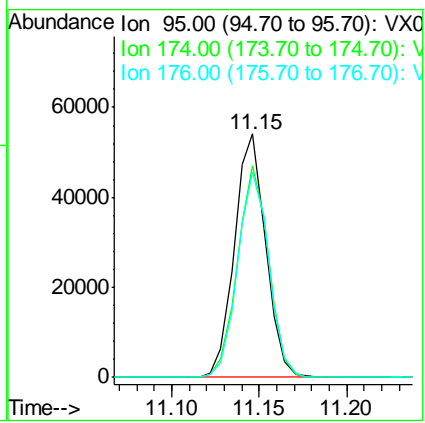
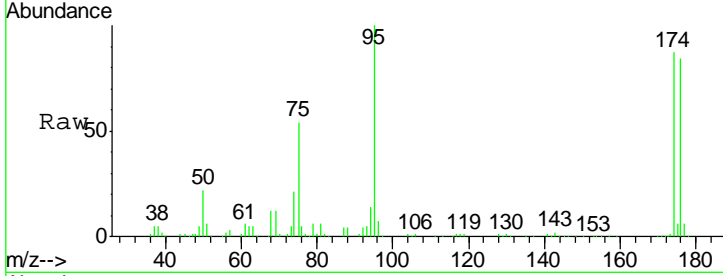




#60  
 4-Bromofluorobenzene  
 Concen: 29.21 ug/l  
 RT: 11.15 min Scan# 1732  
 Delta R.T. 0.00 min  
 Lab File: VX000215.D  
 Acq: 08 Mar 2018 10:29

Instrument : MSVOA\_X  
 ClientSampled : VX0308WBL01

Tgt Ion	Resp	Lower	Upper
95	67076		
174	86.5	71.1	106.7
176	84.2	69.3	103.9



#63  
 Toluene-d8  
 Concen: 31.11 ug/l  
 RT: 8.72 min Scan# 1334  
 Delta R.T. -0.01 min  
 Lab File: VX000215.D  
 Acq: 08 Mar 2018 10:29

Tgt Ion	Resp	Lower	Upper
98	187053		
100	62.5	50.0	75.0

