

Data File : VX000348.D
 Acq On : 16 Mar 2018 15:04
 Operator : JC/MD
 Sample : J1808-01 10X
 Misc : 5.32g/5.0mL/100uL/5.0mL/MSVOA_X/MEOH
 ALS Vial : 6 Sample Multiplier: 1

Instrument :
 MSVOA_X
 ClientSampleId :
 SB-04-12-13

Manual Integrations
APPROVED
 apatel
 3/19/2018 5:32:01 PM

Quant Time: Mar 17 00:47:46 2018
 Quant Method : W:\HPCHEM1\MSVOA_X\METHOD\82X031418W.M
 Quant Title : SW846 8260
 QLast Update : Thu Mar 15 03:39:21 2018
 Response via : Initial Calibration

Internal Standards	R.T.	QIon	Response	Conc	Units	Dev(Min)
1) Pentafluorobenzene	5.68	168	104931	50.00	ug/l	0.00
34) 1,4-Difluorobenzene	6.87	114	176422	50.00	ug/l	0.00
63) Chlorobenzene-d5	10.12	117	168477	50.00	ug/l	0.00
72) 1,4-Dichlorobenzene-d4	12.09	152	81368	50.00	ug/l	0.00

System Monitoring Compounds

33) 1,2-Dichloroethane-d4	6.08	65	71918	49.55	ug/l	0.00
Spiked Amount	50.000		Recovery	=	99.10%	
35) Dibromofluoromethane	5.51	113	53991	48.50	ug/l	0.00
Spiked Amount	50.000		Recovery	=	97.00%	
50) Toluene-d8	8.73	98	223900	48.22	ug/l	0.00
Spiked Amount	50.000		Recovery	=	96.44%	
62) 4-Bromofluorobenzene	11.15	95	75349	40.46	ug/l	0.00
Spiked Amount	50.000		Recovery	=	80.92%	

Target Compounds

						Qvalue
20) Methylene Chloride	2.87	84	2740	2.18	ug/l	93
39) Methylcyclohexane	7.47	83	14880	7.96	ug/l	96
52) Toluene	8.79	92	4947	1.55	ug/l	98
67) Ethyl Benzene	10.26	91	65380	11.18	ug/l	94
68) m/p-Xylenes	10.37	106	69711	30.59	ug/l	98
69) o-Xylene	10.71	106	17505	7.91	ug/l	98
73) Isopropylbenzene	11.02	105	12606	2.57	ug/l	99
78) n-propylbenzene	11.37	91	57480	9.73	ug/l	97
80) 1,3,5-Trimethylbenzene	11.51	105	76240	18.26	ug/l	99
84) 1,2,4-Trimethylbenzene	11.82	105	201636	46.98	ug/l	100
85) sec-Butylbenzene	11.95	105	5575m	1.09	ug/l	
86) p-Isopropyltoluene	12.07	119	4242	0.93	ug/l	87
95) Naphthalene	13.84	128	42022	6.88	ug/l	98

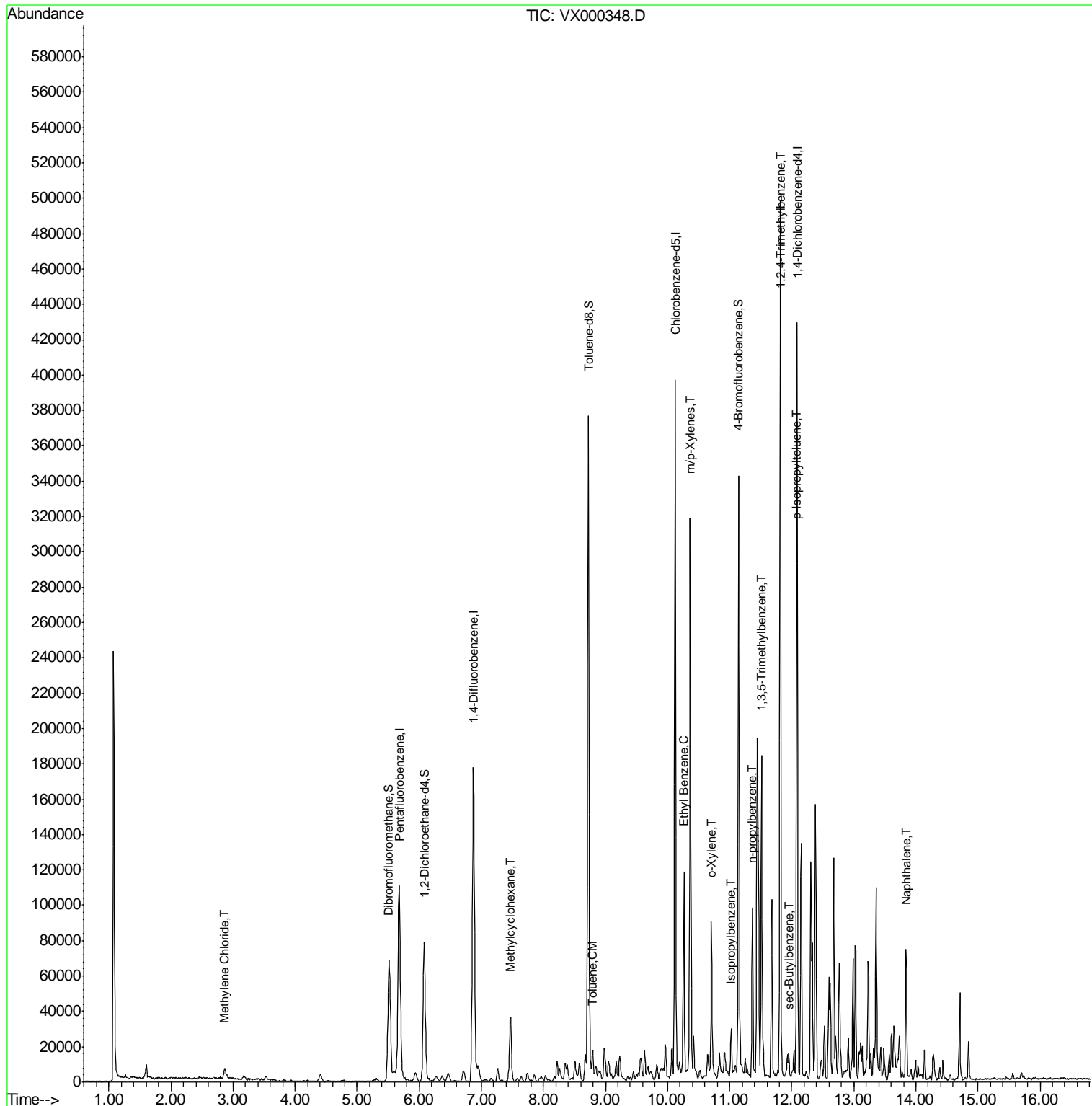
(#) = qualifier out of range (m) = manual integration (+) = signals summed

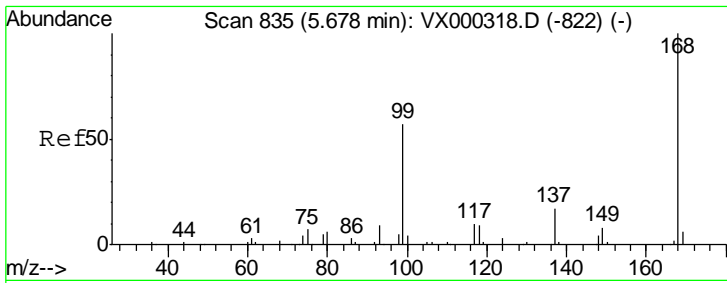
Data File : VX000348.D
Acq On : 16 Mar 2018 15:04
Operator : JC/MD
Sample : J1808-01 10X
Misc : 5.32g/5.0mL/100uL/5.0mL/MSVOA_X/MEOH
ALS Vial : 6 Sample Multiplier: 1

Instrument :
MSVOA_X
Client Sampled :
SB-04-12-13

Manual Integrations
APPROVED
apatel
3/19/2018 5:32:01 PM

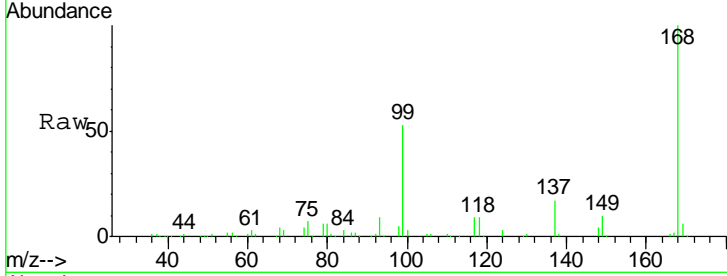
Quant Time: Mar 17 00:47:46 2018
Quant Method : W:\HPCHEM1\MSVOA_X\METHOD\82X031418W.M
Quant Title : SW846 8260
QLast Update : Thu Mar 15 03:39:21 2018
Response via : Initial Calibration





#1
 Pentafluorobenzene
 Concen: 50.00 ug/l
 RT: 5.68 min Scan# 835
 Delta R.T. 0.00 min
 Lab File: VX000348.D
 Acq: 16 Mar 2018 15:04

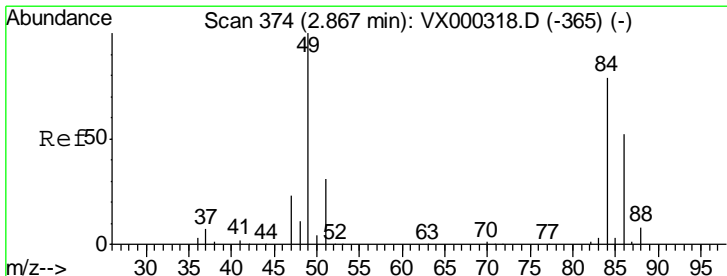
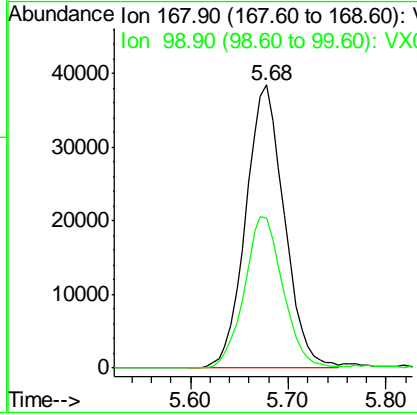
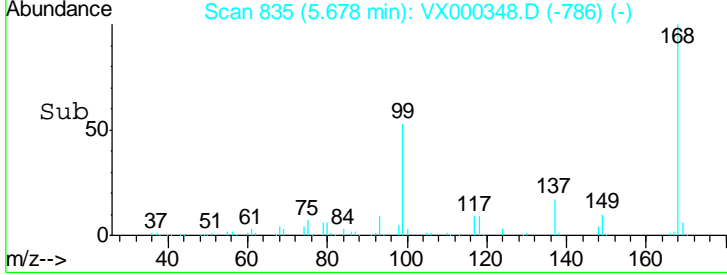
Instrument : MSVOA_X
 ClientSampled : SB-04-12-13



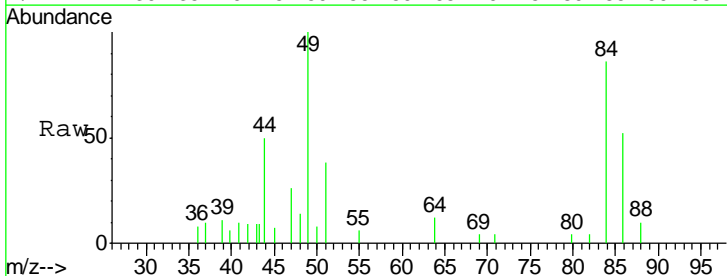
Tgt Ion: 168 Resp: 104931

Ion	Ratio	Lower	Upper
168	100		
99	53.1	45.8	68.6

Manual Integrations
APPROVED
 apatel
 3/19/2018 5:32:01 PM

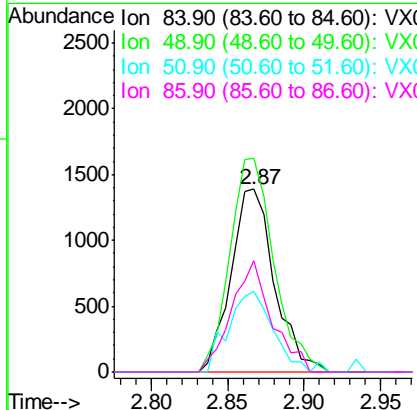
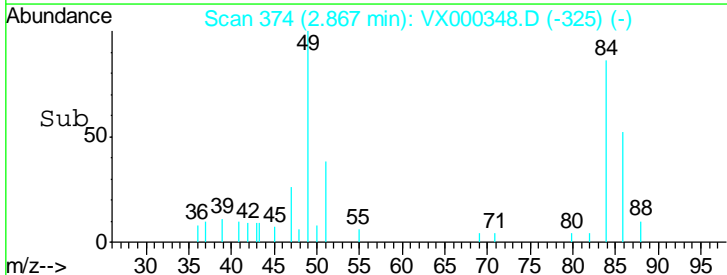


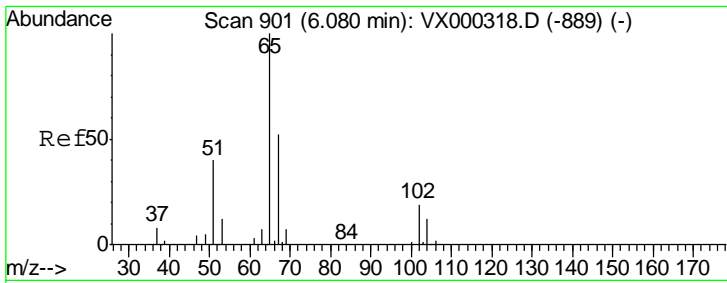
#20
 Methylene Chloride
 Concen: 2.18 ug/l
 RT: 2.87 min Scan# 374
 Delta R.T. 0.00 min
 Lab File: VX000348.D
 Acq: 16 Mar 2018 15:04



Tgt Ion: 84 Resp: 2740

Ion	Ratio	Lower	Upper
84	100		
49	116.8	100.6	151.0
51	44.1	31.6	47.4
86	60.7	52.6	78.8





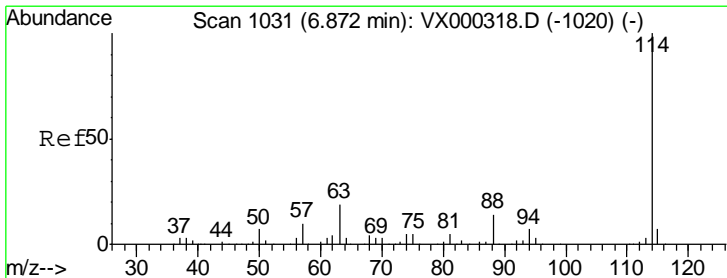
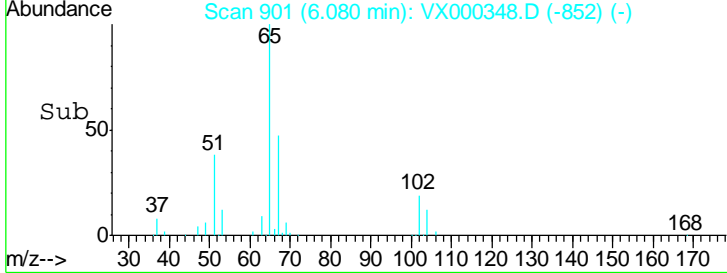
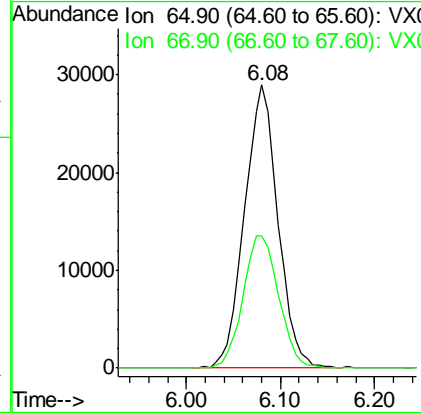
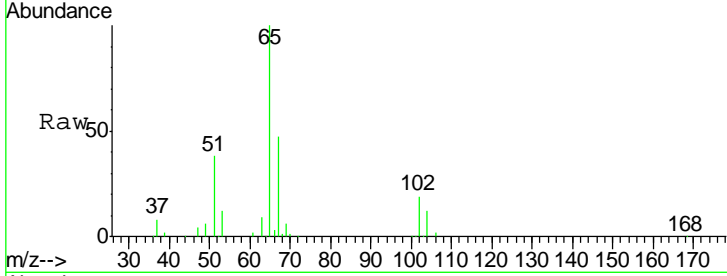
#33
 1,2-Dichloroethane-d4
 Concen: 49.55 ug/l
 RT: 6.08 min Scan# 901
 Delta R.T. 0.00 min
 Lab File: VX000348.D
 Acq: 16 Mar 2018 15:04

Instrument :
 MSVOA_X
ClientSampled :
 SB-04-12-13

Tgt Ion: 65 Resp: 71918

Ion	Ratio	Lower	Upper
65	100		
67	50.0	0.0	103.2

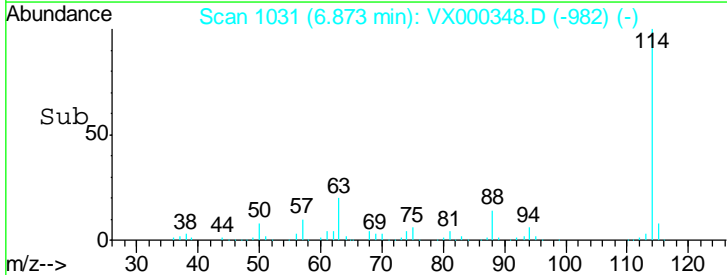
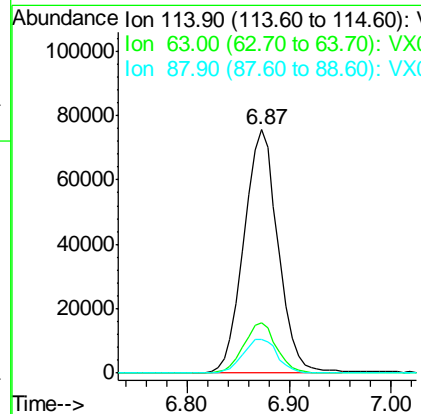
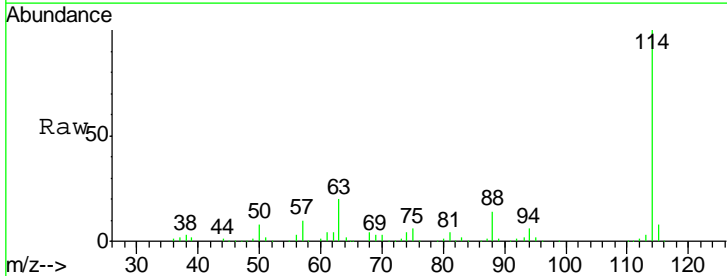
Manual Integrations
APPROVED
 apatel
 3/19/2018 5:32:01 PM

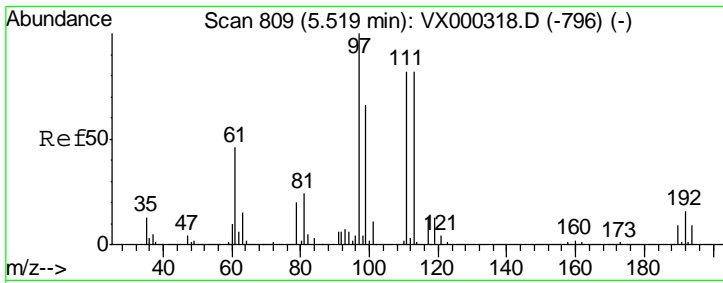


#34
 1,4-Difluorobenzene
 Concen: 50.00 ug/l
 RT: 6.87 min Scan# 1031
 Delta R.T. 0.00 min
 Lab File: VX000348.D
 Acq: 16 Mar 2018 15:04

Tgt Ion: 114 Resp: 176422

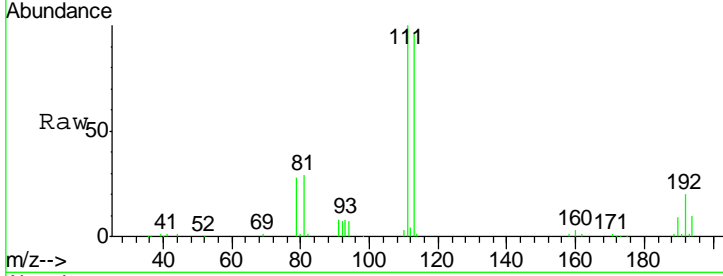
Ion	Ratio	Lower	Upper
114	100		
63	20.4	0.0	38.4
88	13.7	0.0	27.0





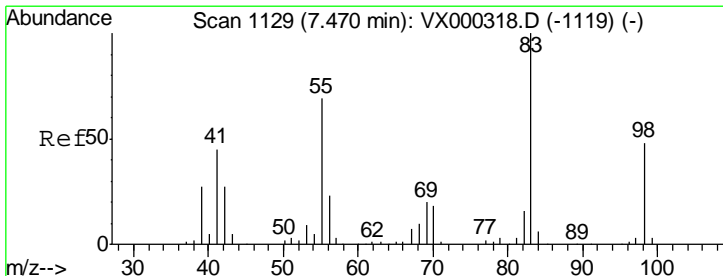
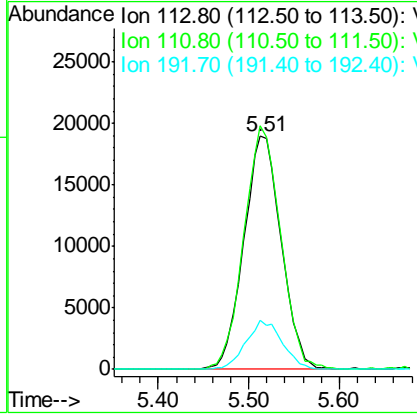
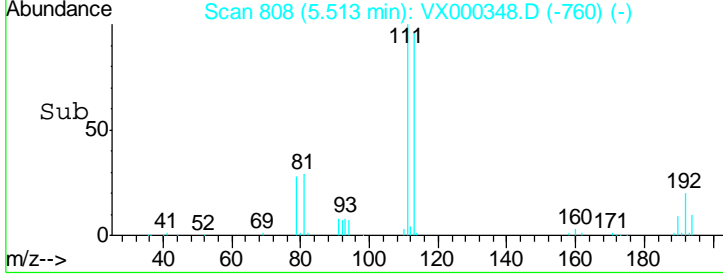
#35
 Dibromofluoromethane
 Concen: 48.50 ug/l
 RT: 5.51 min Scan# 808
 Delta R.T. -0.01 min
 Lab File: VX000348.D
 Acq: 16 Mar 2018 15:04

Instrument :
 MSVOA_X
ClientSampled :
 SB-04-12-13

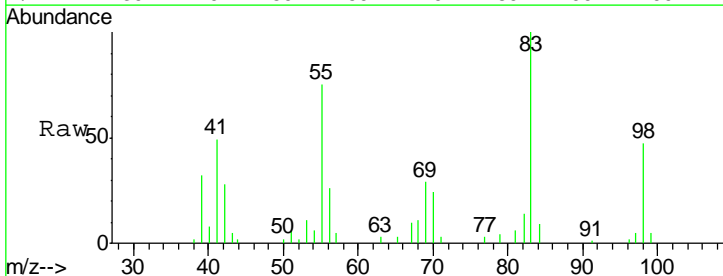


Tgt Ion	Resp	Lower	Upper
113	53991		
113	100		
111	102.4	82.4	123.6
192	20.5	15.8	23.6

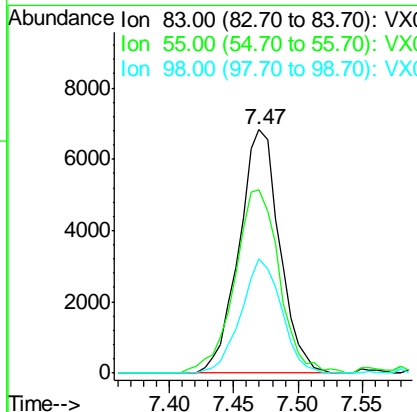
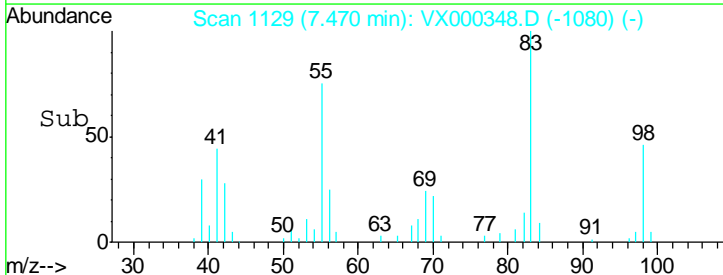
Manual Integrations
APPROVED
 apatel
 3/19/2018 5:32:01 PM

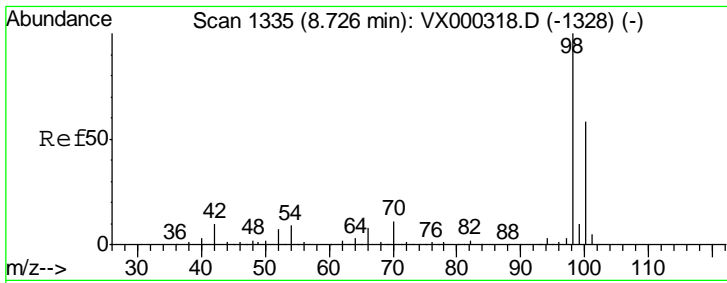


#39
 Methylcyclohexane
 Concen: 7.96 ug/l
 RT: 7.47 min Scan# 1129
 Delta R.T. 0.00 min
 Lab File: VX000348.D
 Acq: 16 Mar 2018 15:04



Tgt Ion	Resp	Lower	Upper
83	14880		
83	100		
55	73.8	55.5	83.3
98	46.8	38.2	57.4



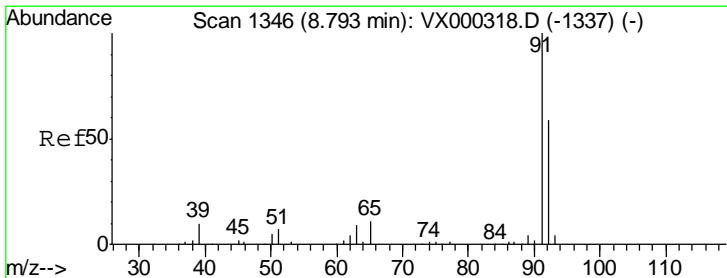
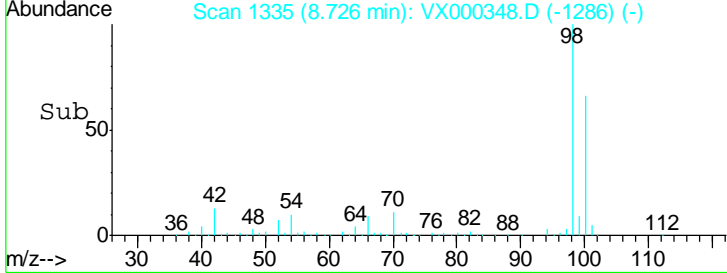
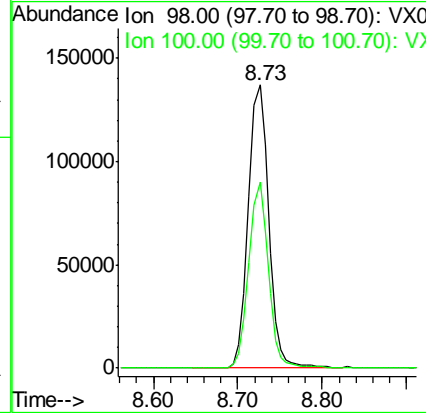
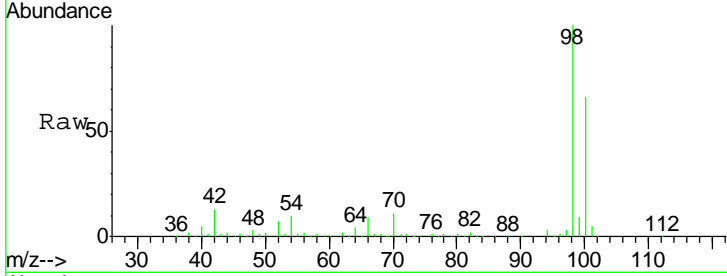


#50
 Toluene-d8
 Concen: 48.22 ug/l
 RT: 8.73 min Scan# 1335
 Delta R.T. 0.00 min
 Lab File: VX000348.D
 Acq: 16 Mar 2018 15:04

Instrument :
 MSVOA_X
ClientSampled :
 SB-04-12-13

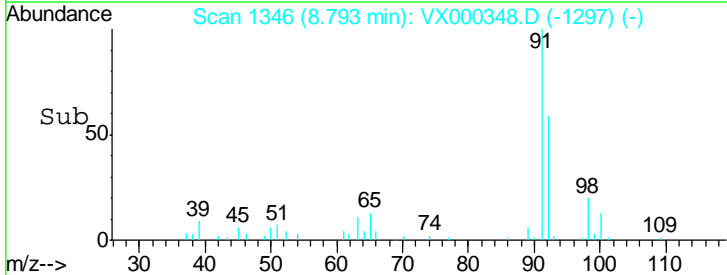
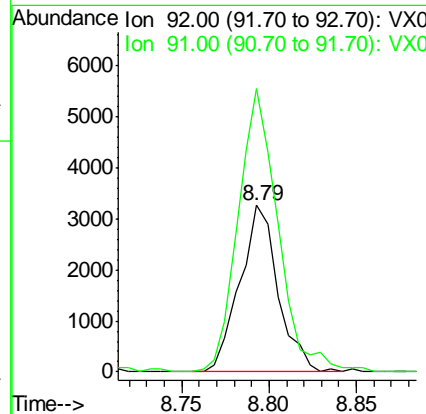
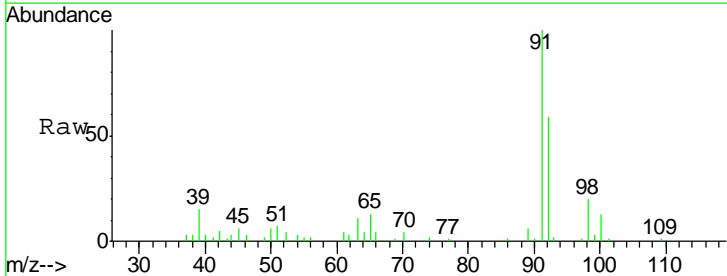
Tgt Ion: 98 Resp: 223900
 Ion Ratio Lower Upper
 98 100
 100 62.9 51.2 76.8

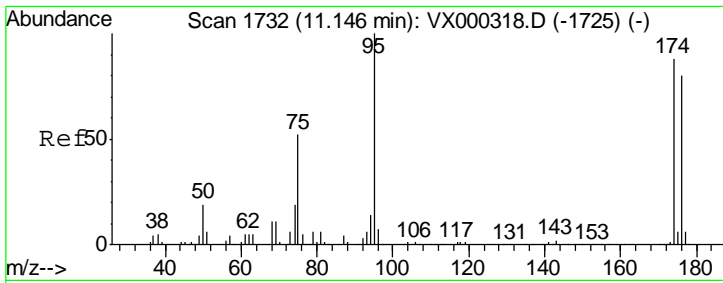
Manual Integrations
APPROVED
 apatel
 3/19/2018 5:32:01 PM



#52
 Toluene
 Concen: 1.55 ug/l
 RT: 8.79 min Scan# 1346
 Delta R.T. 0.00 min
 Lab File: VX000348.D
 Acq: 16 Mar 2018 15:04

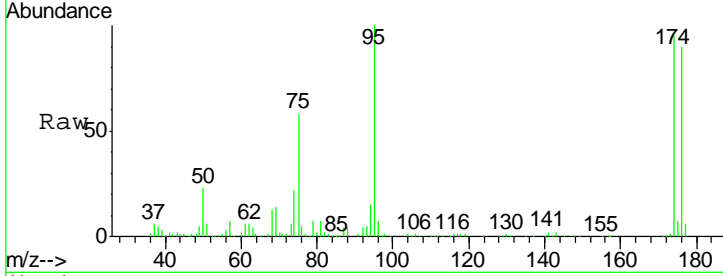
Tgt Ion: 92 Resp: 4947
 Ion Ratio Lower Upper
 92 100
 91 177.7 140.2 210.2





#62
 4-Bromofluorobenzene
 Concen: 40.46 ug/l
 RT: 11.15 min Scan# 1732
 Delta R.T. 0.00 min
 Lab File: VX000348.D
 Acq: 16 Mar 2018 15:04

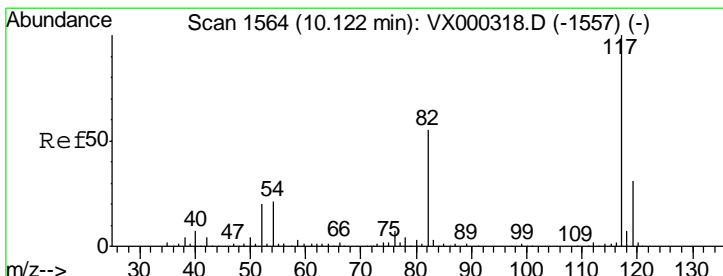
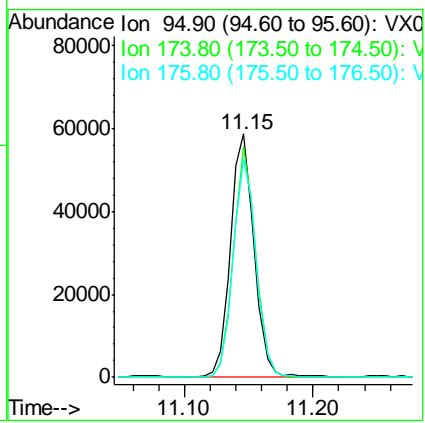
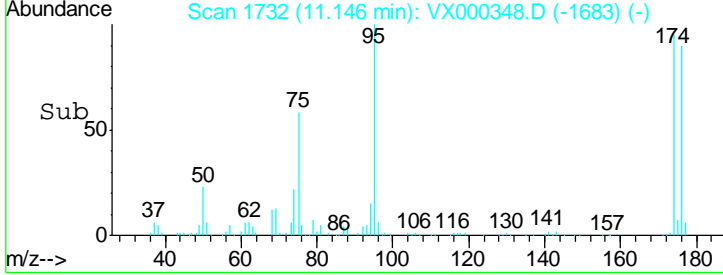
Instrument : MSVOA_X
 Client Sampled : SB-04-12-13



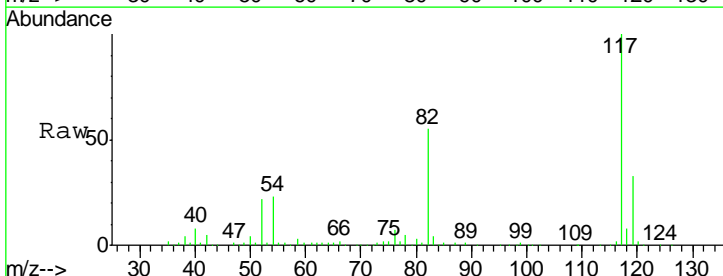
Tgt Ion: 95 Resp: 75349

Ion	Ratio	Lower	Upper
95	100		
174	89.7	0.0	173.6
176	87.1	0.0	164.6

Manual Integrations
APPROVED
 apatel
 3/19/2018 5:32:01 PM

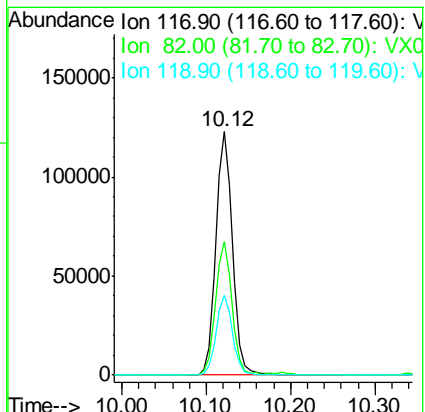
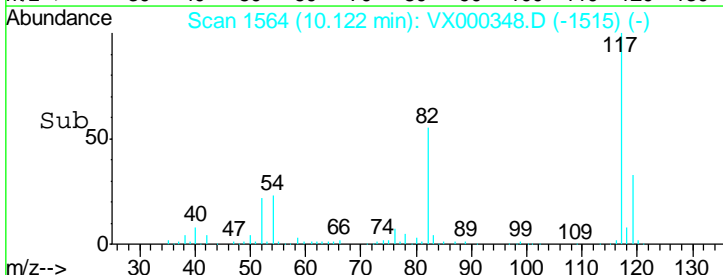


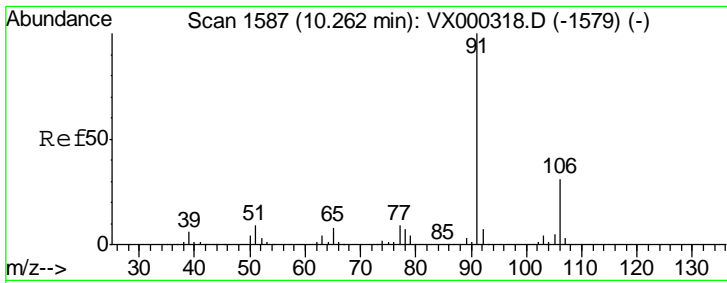
#63
 Chlorobenzene-d5
 Concen: 50.00 ug/l
 RT: 10.12 min Scan# 1564
 Delta R.T. 0.00 min
 Lab File: VX000348.D
 Acq: 16 Mar 2018 15:04



Tgt Ion: 117 Resp: 168477

Ion	Ratio	Lower	Upper
117	100		
82	54.6	43.8	65.8
119	32.9	24.9	37.3



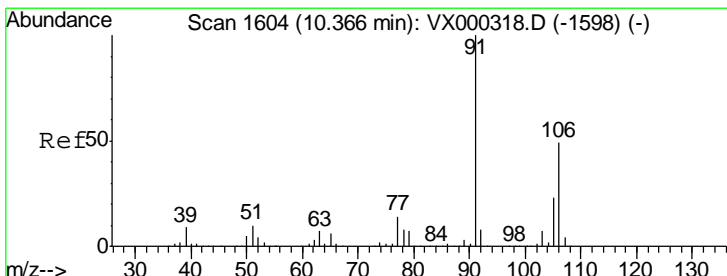
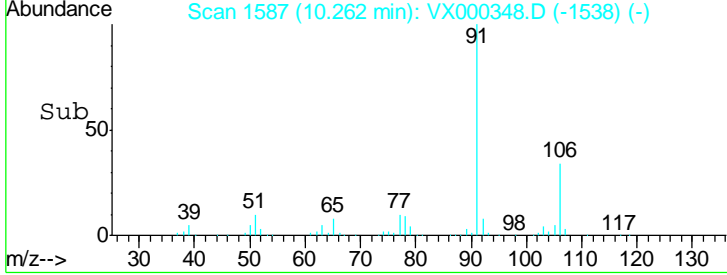
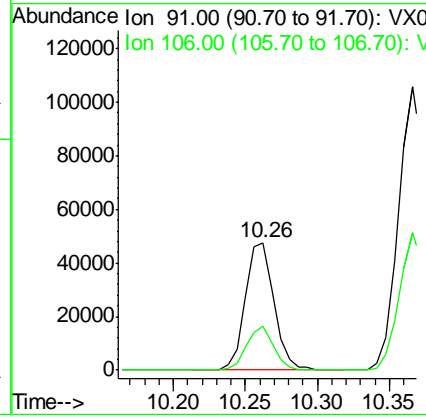
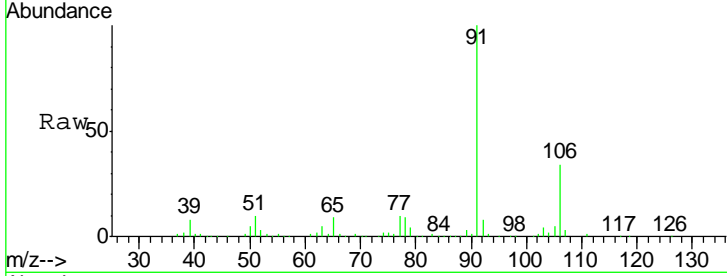


#67
 Ethyl Benzene
 Concen: 11.18 ug/l
 RT: 10.26 min Scan# 1587
 Delta R.T. 0.00 min
 Lab File: VX000348.D
 Acq: 16 Mar 2018 15:04

Instrument : MSVOA_X
 ClientSampled : SB-04-12-13

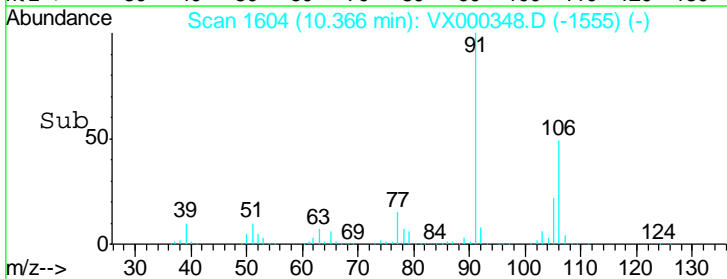
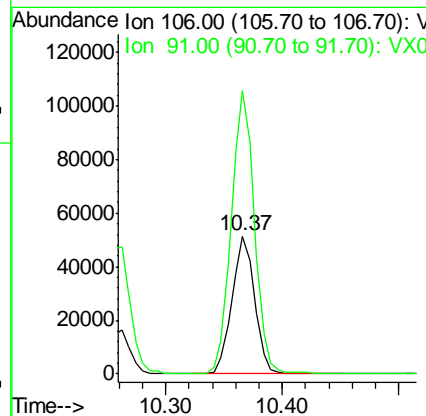
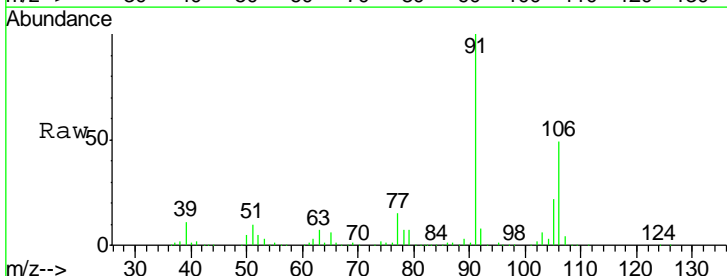
Tgt Ion: 91 Resp: 65380
 Ion Ratio Lower Upper
 91 100
 106 34.4 25.0 37.6

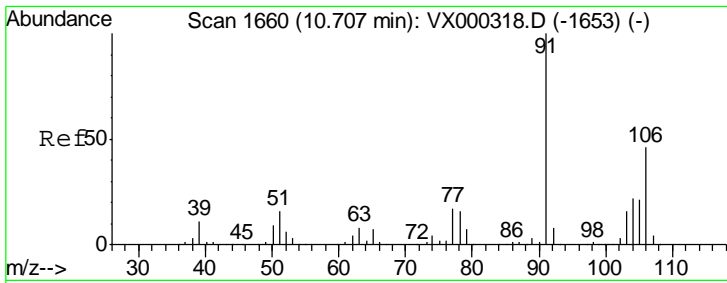
Manual Integrations
APPROVED
 apatel
 3/19/2018 5:32:01 PM



#68
 m/p-Xylenes
 Concen: 30.59 ug/l
 RT: 10.37 min Scan# 1604
 Delta R.T. 0.00 min
 Lab File: VX000348.D
 Acq: 16 Mar 2018 15:04

Tgt Ion: 106 Resp: 69711
 Ion Ratio Lower Upper
 106 100
 91 207.8 163.4 245.2



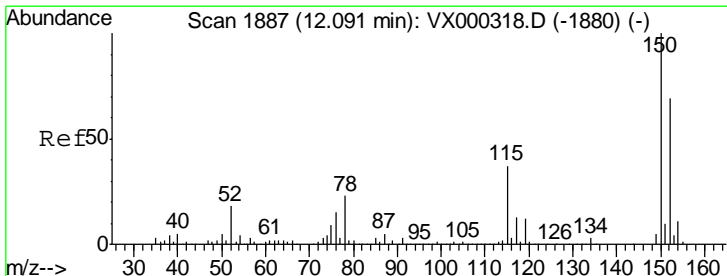
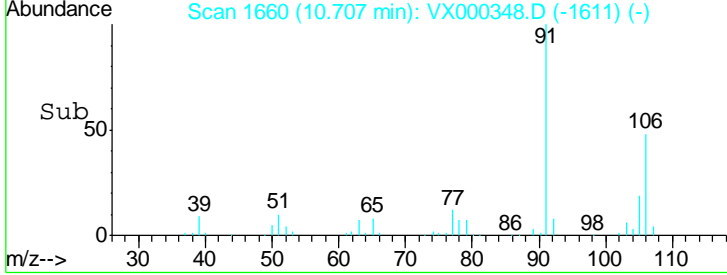
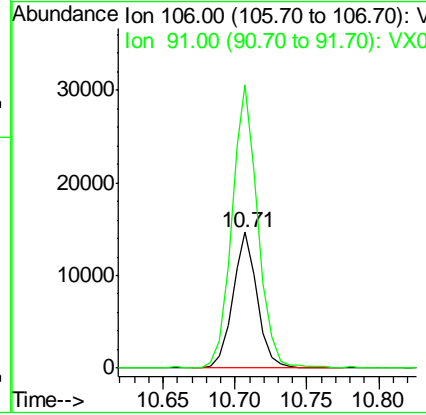
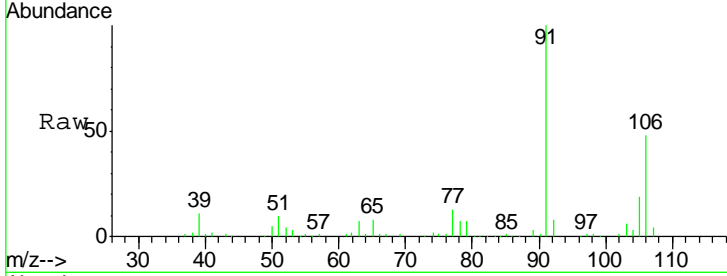


#69
 o-Xylene
 Concen: 7.91 ug/l
 RT: 10.71 min Scan# 1660
 Delta R.T. 0.00 min
 Lab File: VX000348.D
 Acq: 16 Mar 2018 15:04

Instrument : MSVOA_X
 Client Sampled : SB-04-12-13

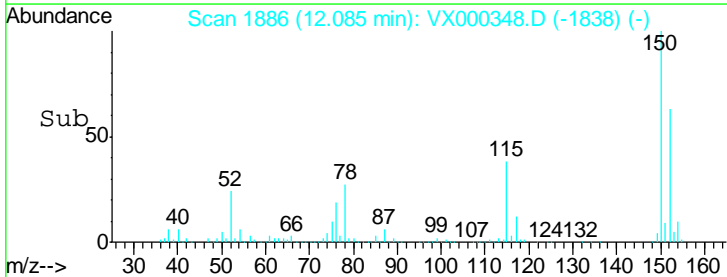
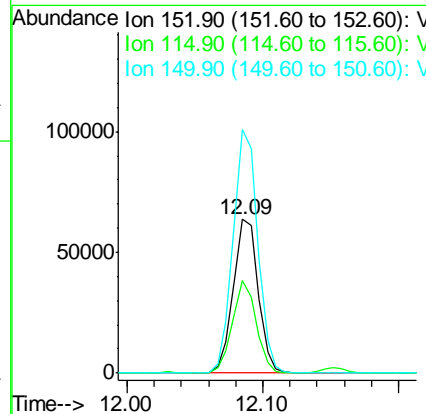
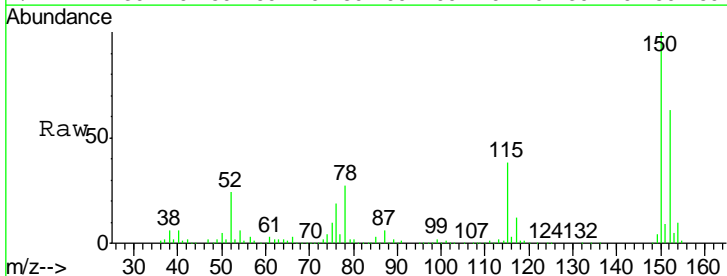
Tgt Ion: 106 Resp: 17505
 Ion Ratio Lower Upper
 106 100
 91 217.0 106.5 319.6

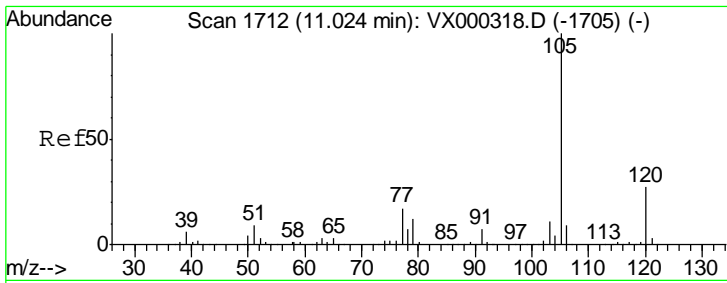
Manual Integrations
APPROVED
 apatel
 3/19/2018 5:32:01 PM



#72
 1,4-Dichlorobenzene-d4
 Concen: 50.00 ug/l
 RT: 12.09 min Scan# 1886
 Delta R.T. -0.01 min
 Lab File: VX000348.D
 Acq: 16 Mar 2018 15:04

Tgt Ion: 152 Resp: 81368
 Ion Ratio Lower Upper
 152 100
 115 57.4 39.8 119.3
 150 156.3 0.0 344.4



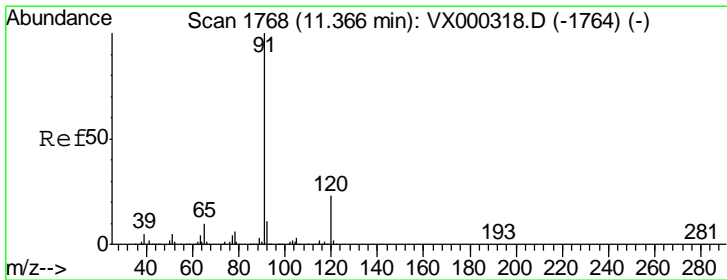
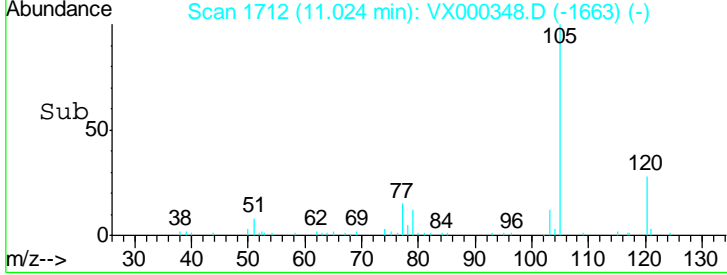
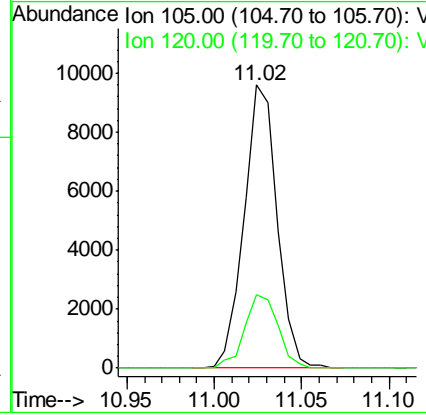
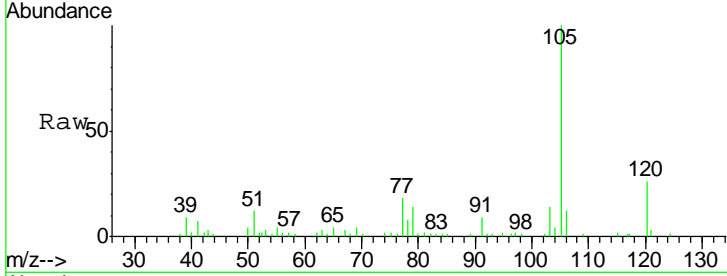


#73
 Isopropylbenzene
 Concen: 2.57 ug/l
 RT: 11.02 min Scan# 1712
 Delta R.T. 0.00 min
 Lab File: VX000348.D
 Acq: 16 Mar 2018 15:04

Instrument : MSVOA_X
 ClientSampled : SB-04-12-13

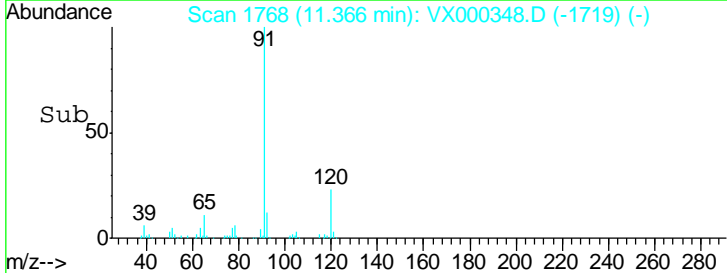
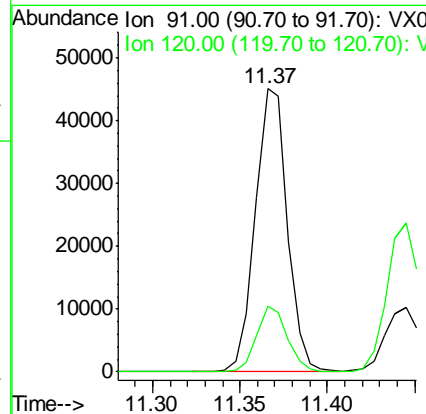
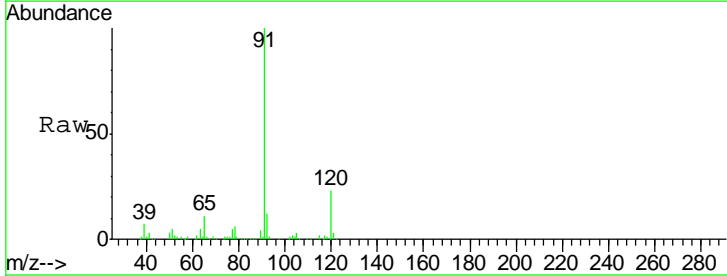
Tgt Ion	Resp	Lower	Upper
105	12606		
120	26.5	13.6	40.7

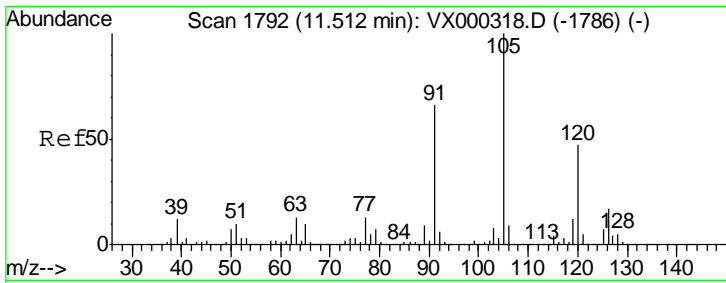
Manual Integrations APPROVED
 apatel
 3/19/2018 5:32:01 PM



#78
 n-propylbenzene
 Concen: 9.73 ug/l
 RT: 11.37 min Scan# 1768
 Delta R.T. 0.00 min
 Lab File: VX000348.D
 Acq: 16 Mar 2018 15:04

Tgt Ion	Resp	Lower	Upper
91	57480		
120	22.3	11.8	35.3





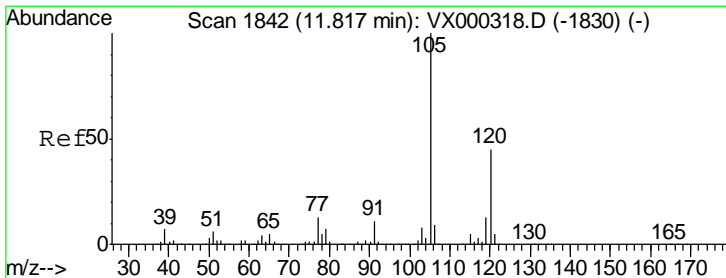
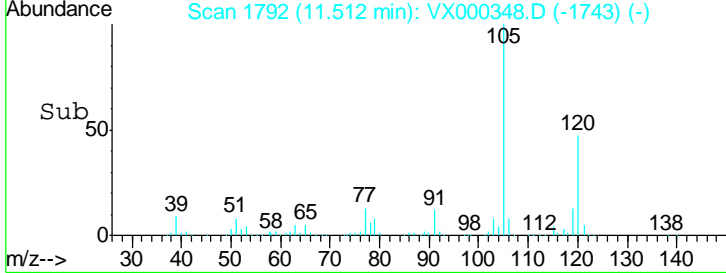
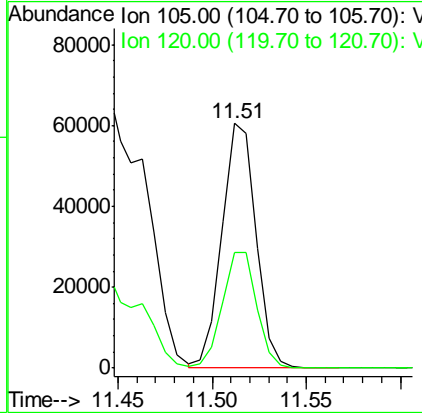
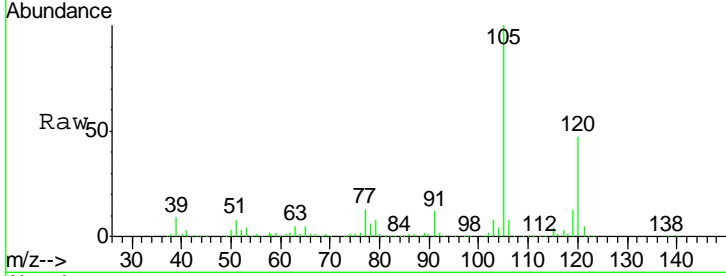
#80
 1,3,5-Trimethylbenzene
 Concen: 18.26 ug/l
 RT: 11.51 min Scan# 1792
 Delta R.T. 0.00 min
 Lab File: VX000348.D
 Acq: 16 Mar 2018 15:04

Instrument : MSVOA_X
 Client Sampled : SB-04-12-13

Tgt Ion: 105 Resp: 76240
 Ion Ratio Lower Upper
 105 100
 120 47.7 24.1 72.4

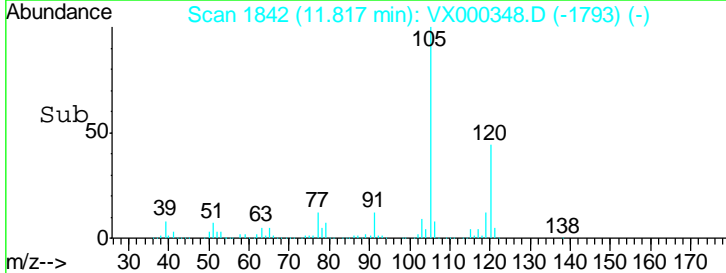
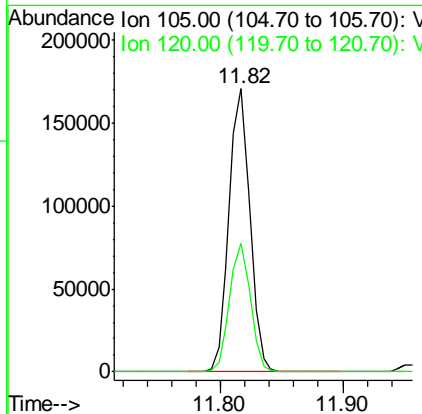
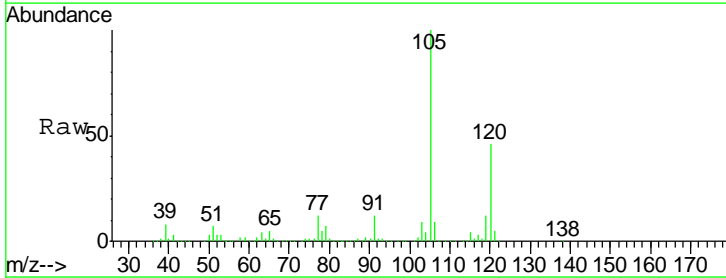
Manual Integrations
 APPROVED

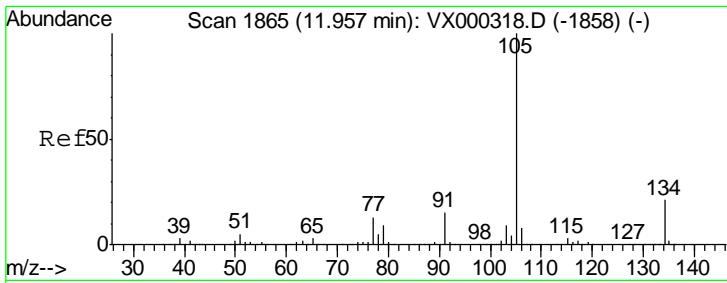
apatel
 3/19/2018 5:32:01 PM



#84
 1,2,4-Trimethylbenzene
 Concen: 46.98 ug/l
 RT: 11.82 min Scan# 1842
 Delta R.T. 0.00 min
 Lab File: VX000348.D
 Acq: 16 Mar 2018 15:04

Tgt Ion: 105 Resp: 201636
 Ion Ratio Lower Upper
 105 100
 120 45.2 22.4 67.3





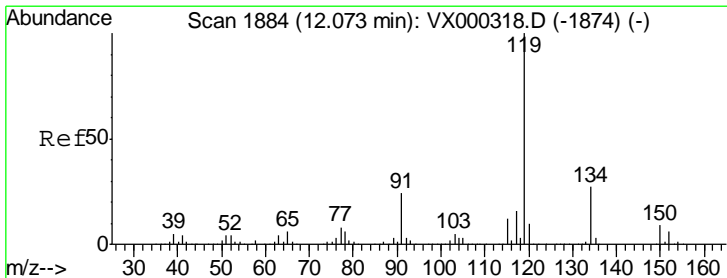
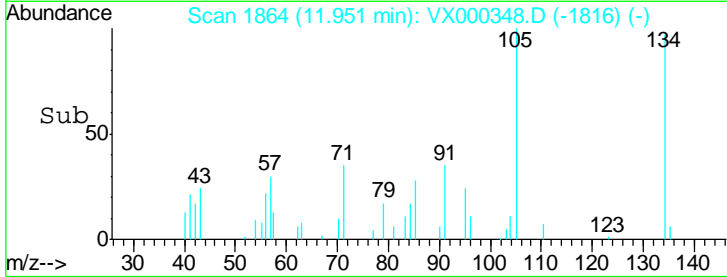
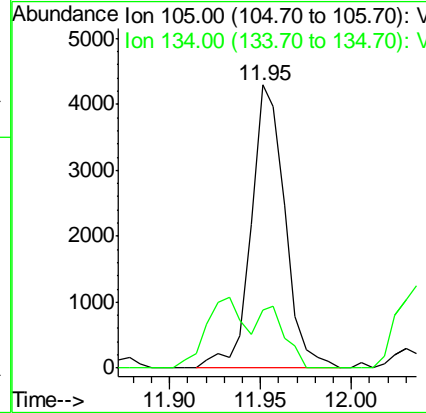
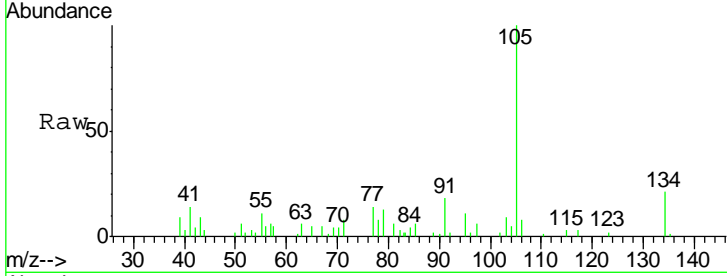
#85
 sec-Butylbenzene
 Concen: 1.09 ug/l m
 RT: 11.95 min Scan# 1864
 Delta R.T. -0.01 min
 Lab File: VX000348.D
 Acq: 16 Mar 2018 15:04

Instrument :
 MSVOA_X
 ClientSampled :
 SB-04-12-13

Tgt Ion: 105 Resp: 5575
 Ion Ratio Lower Upper
 105 100
 134 0.0 10.3 30.8#

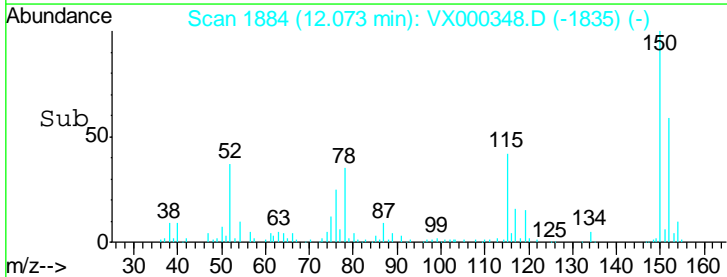
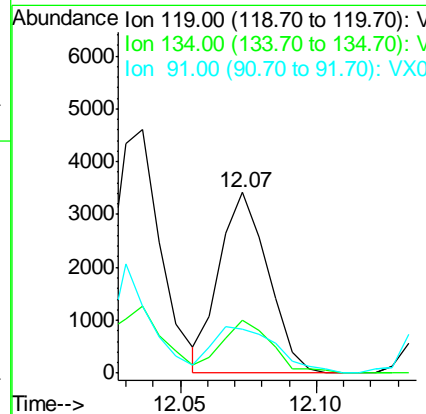
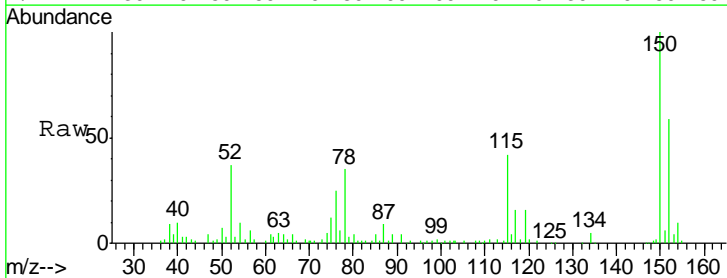
Manual Integrations
 APPROVED

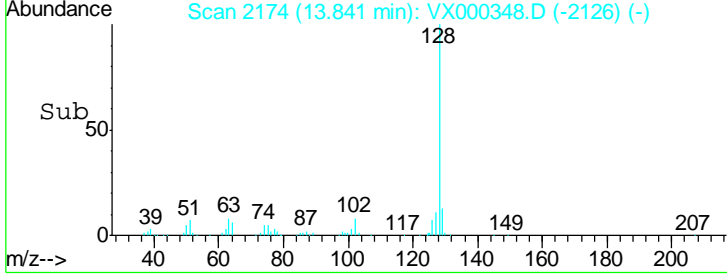
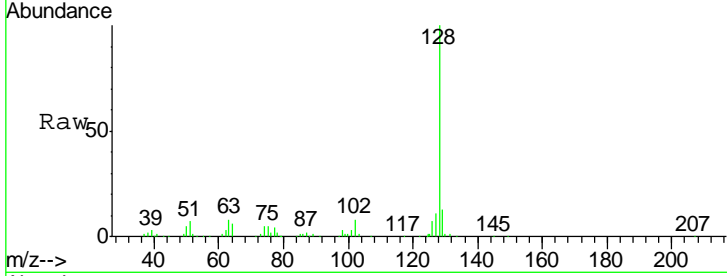
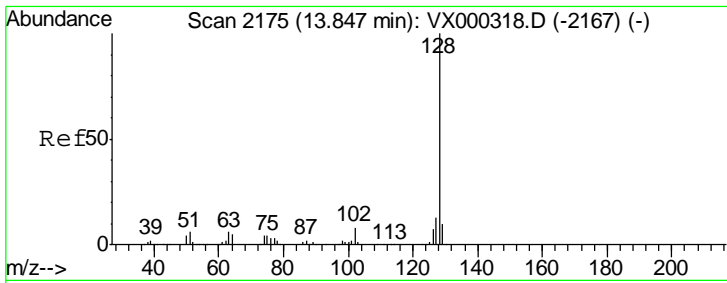
apatel
 3/19/2018 5:32:01 PM



#86
 p-Isopropyltoluene
 Concen: 0.93 ug/l
 RT: 12.07 min Scan# 1884
 Delta R.T. 0.00 min
 Lab File: VX000348.D
 Acq: 16 Mar 2018 15:04

Tgt Ion: 119 Resp: 4242
 Ion Ratio Lower Upper
 119 100
 134 30.1 13.3 39.9
 91 34.3 12.0 36.1





#95
 Naphthalene
 Concen: 6.88 ug/l
 RT: 13.84 min Scan# 2174
 Delta R.T. -0.01 min
 Lab File: VX000348.D
 Acq: 16 Mar 2018 15:04

Tgt Ion: 128 Resp: 42022

Ion	Ratio	Lower	Upper
128	100		
127	13.3	10.6	15.8
129	12.7	8.9	13.3

Instrument : MSVOA_X
 Client Sampled : SB-04-12-13

Manual Integrations APPROVED
 apatel
 3/19/2018 5:32:01 PM

