

Data File : VX000402.D  
 Acq On : 22 Mar 2018 13:32  
 Operator : JC/MD  
 Sample : J1990-03  
 Misc : 5.0mL/MSVOA\_X/WATER  
 ALS Vial : 6 Sample Multiplier: 1

Instrument :  
 MSVOA\_X  
 ClientSampled :  
 WELL-B

Quant Time: Mar 23 05:42:27 2018  
 Quant Method : W:\HPCHEM1\MSVOA\_X\METHOD\82X032018W.M  
 Quant Title : SW846 8260  
 QLast Update : Wed Mar 21 04:52:42 2018  
 Response via : Initial Calibration

Internal Standards	R.T.	QIon	Response	Conc	Units	Dev(Min)
1) Pentafluorobenzene	5.68	168	95251	50.00	ug/l	0.00
34) 1,4-Difluorobenzene	6.87	114	167293	50.00	ug/l	0.00
63) Chlorobenzene-d5	10.12	117	152358	50.00	ug/l	0.00
72) 1,4-Dichlorobenzene-d4	12.09	152	71012	50.00	ug/l	0.00

System Monitoring Compounds

33) 1,2-Dichloroethane-d4	6.08	65	66201	53.24	ug/l	0.00
Spiked Amount	50.000		Recovery	=	106.48%	
35) Dibromofluoromethane	5.51	113	53575	50.83	ug/l	0.00
Spiked Amount	50.000		Recovery	=	101.66%	
50) Toluene-d8	8.73	98	206936	47.40	ug/l	0.00
Spiked Amount	50.000		Recovery	=	94.80%	
62) 4-Bromofluorobenzene	11.15	95	64746	36.94	ug/l	0.00
Spiked Amount	50.000		Recovery	=	73.88%	

Target Compounds

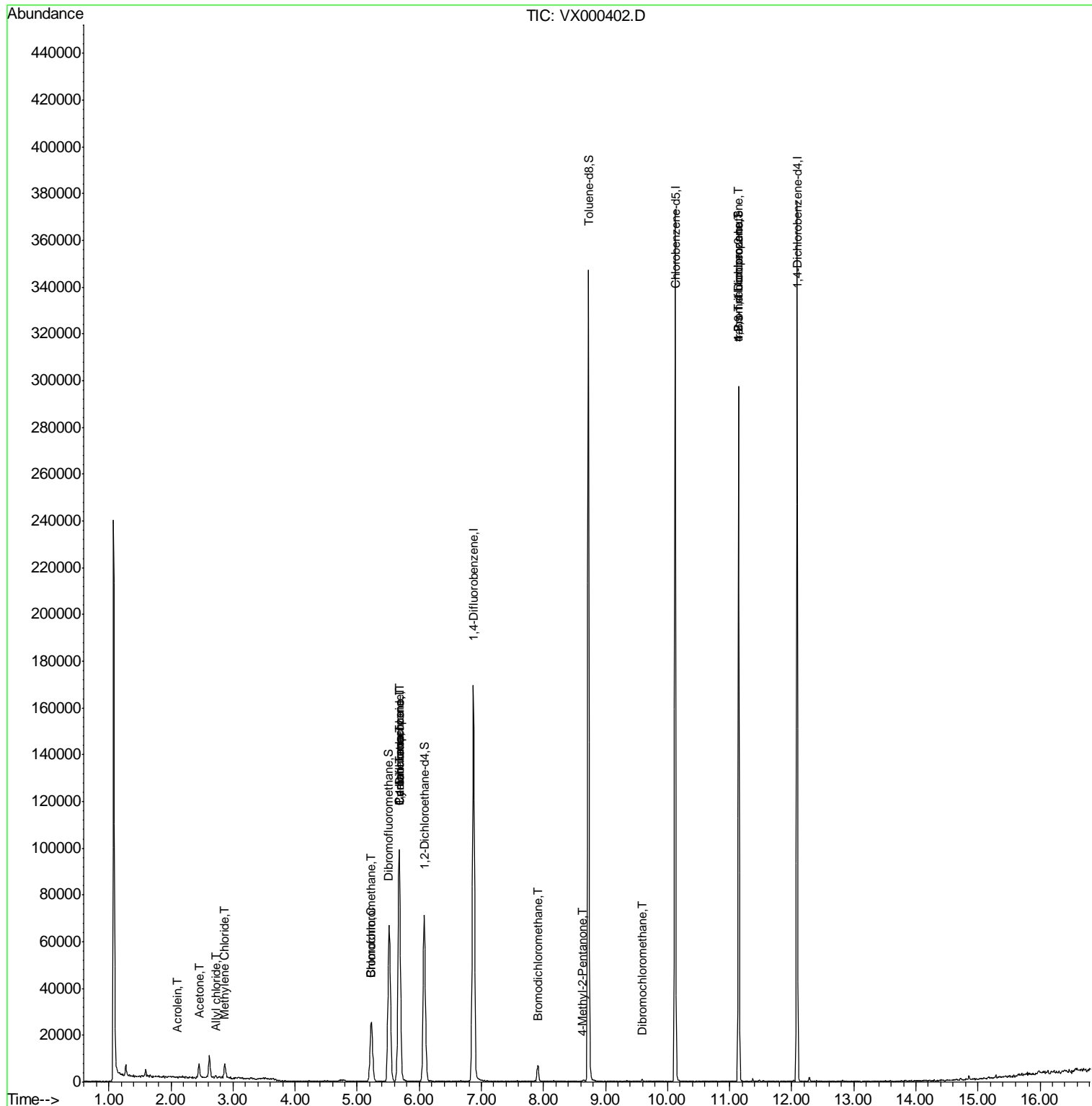
						Qvalue
6) Chloroethane	1.74	64	63	Below Cal	#	44
13) Acrolein	2.11	56	43	14.87	ug/l #	13
14) Allyl chloride	2.71	41	934	0.41	ug/l #	42
16) Acetone	2.45	43	6889	6.66	ug/l	92
20) Methylene Chloride	2.87	84	2483	2.08	ug/l	94
28) Bromochloromethane	5.22	49	2906	3.47	ug/l #	12
30) Chloroform	5.23	83	28136	14.80	ug/l	96
31) Cyclohexane	5.68	56	2191	1.40	ug/l #	52
36) 1,1-Dichloropropene	5.67	75	7240	4.62	ug/l #	52
38) Carbon Tetrachloride	5.67	117	9552	5.81	ug/l #	18
47) Bromodichloromethane	7.91	83	3914	2.43	ug/l #	88
51) 4-Methyl-2-Pentanone	8.63	43	607	0.25	ug/l #	37
60) Dibromochloromethane	9.59	129	346	4.32	ug/l	65
76) 1,2,3-Trichloropropane	11.15	75	38259	25.07	ug/l #	35
81) trans-1,4-Dichloro-2-buten	11.15	75	38259	81.16	ug/l #	9

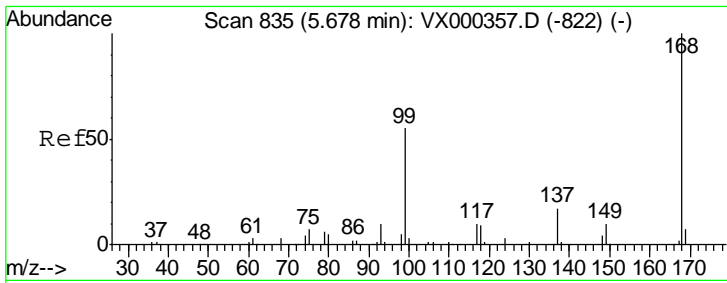
(#) = qualifier out of range (m) = manual integration (+) = signals summed

Data File : VX000402.D  
Acq On : 22 Mar 2018 13:32  
Operator : JC/MD  
Sample : J1990-03  
Misc : 5.0mL/MSVOA\_X/WATER  
ALS Vial : 6 Sample Multiplier: 1

Instrument :  
MSVOA\_X  
Client Sampled :  
WELL-B

Quant Time: Mar 23 05:42:27 2018  
Quant Method : W:\HPCHEM1\MSVOA\_X\METHOD\82X032018W.M  
Quant Title : SW846 8260  
QLast Update : Wed Mar 21 04:52:42 2018  
Response via : Initial Calibration

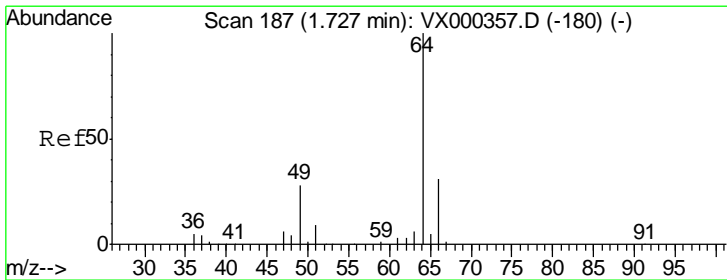
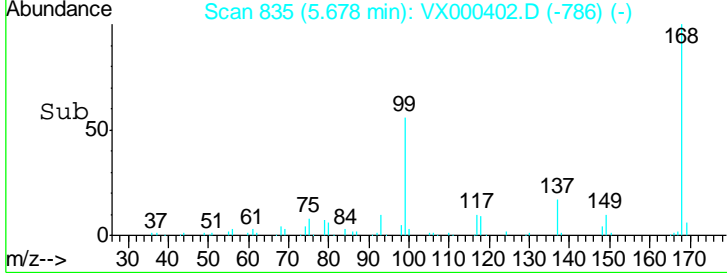
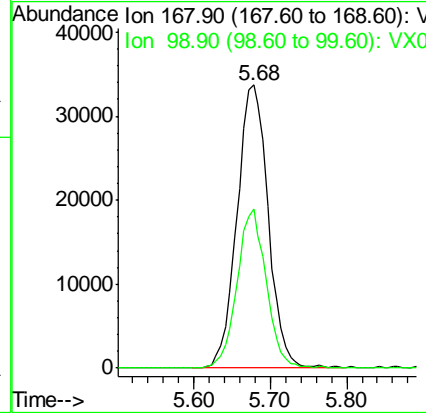
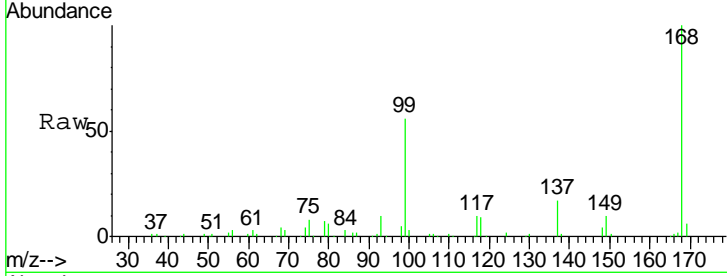




#1  
 Pentafluorobenzene  
 Concen: 50.00 ug/l  
 RT: 5.68 min Scan# 835  
 Delta R.T. 0.00 min  
 Lab File: VX000402.D  
 Acq: 22 Mar 2018 13:32

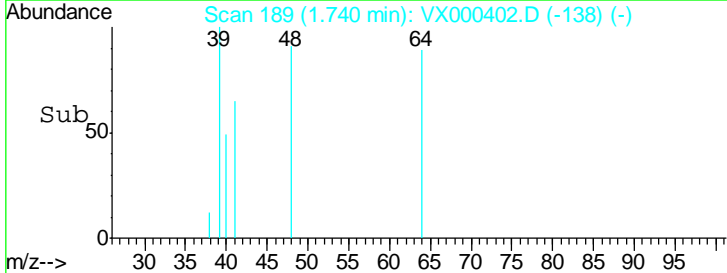
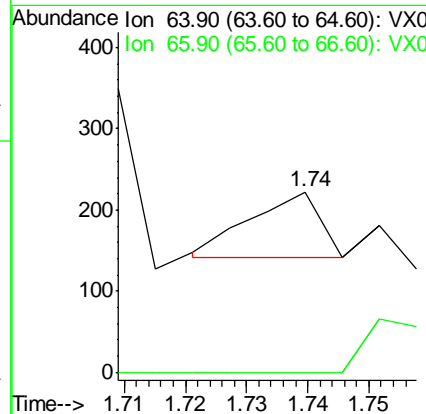
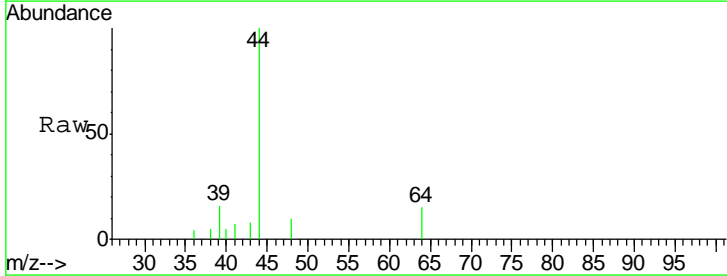
Instrument : MSVOA\_X  
 ClientSampled : WELL-B

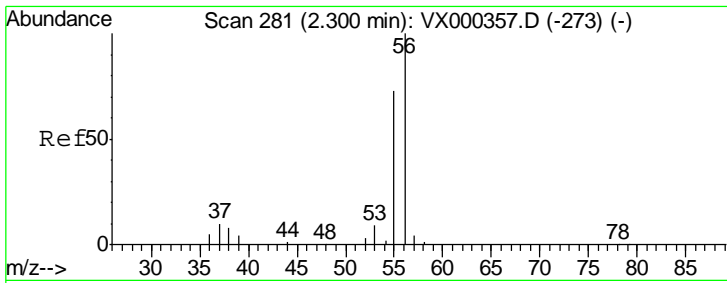
Tgt Ion: 168 Resp: 95251  
 Ion Ratio Lower Upper  
 168 100  
 99 56.3 45.8 68.6



#6  
 Chloroethane  
 Concen: Below Cal  
 RT: 1.74 min Scan# 189  
 Delta R.T. 0.01 min  
 Lab File: VX000402.D  
 Acq: 22 Mar 2018 13:32

Tgt Ion: 64 Resp: 63  
 Ion Ratio Lower Upper  
 64 100  
 66 0.0 24.8 37.2#

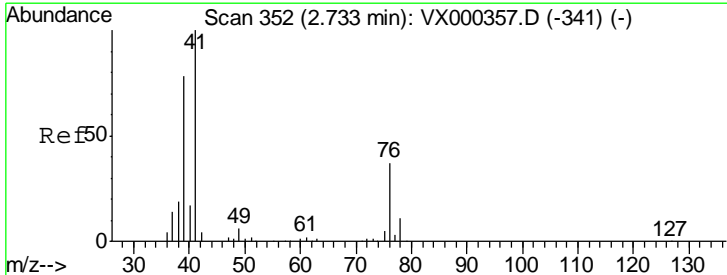
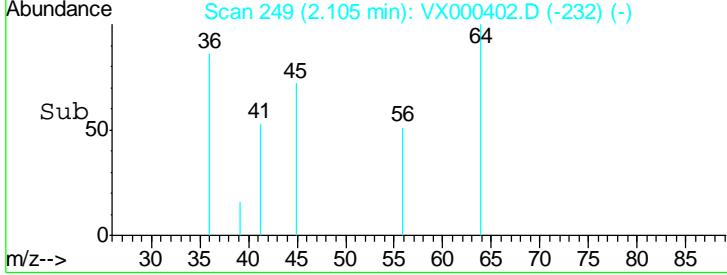
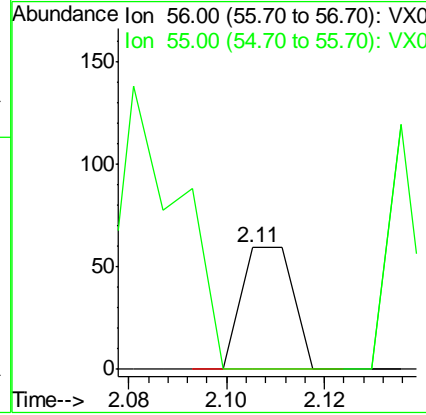
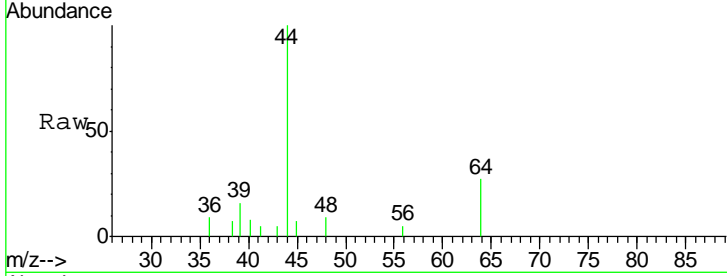




#13  
 Acrolein  
 Concen: 14.87 ug/l  
 RT: 2.11 min Scan# 249  
 Delta R.T. -0.19 min  
 Lab File: VX000402.D  
 Acq: 22 Mar 2018 13:32

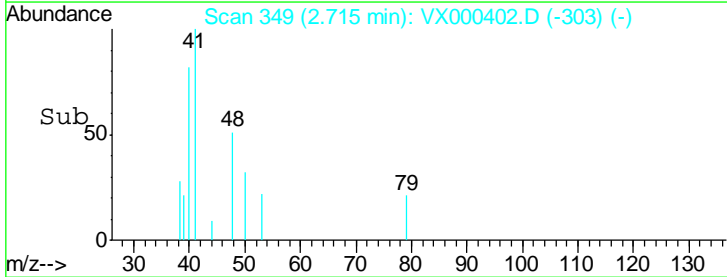
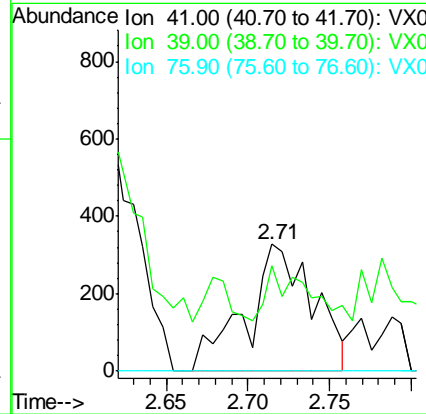
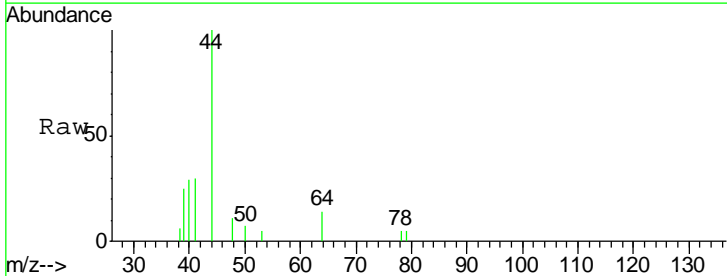
Instrument : MSVOA\_X  
 ClientSampled : WELL-B

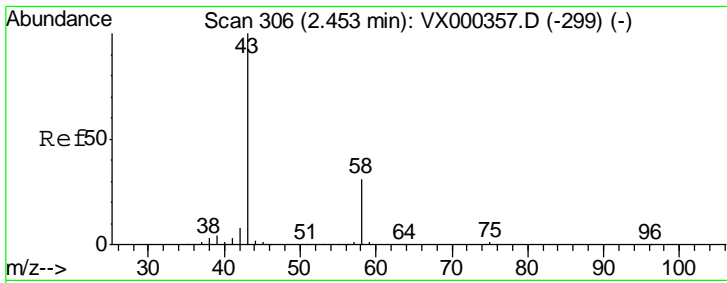
Tgt Ion	Resp	Lower	Upper
56	100		
55	0.0	58.8	88.2#



#14  
 Allyl chloride  
 Concen: 0.41 ug/l  
 RT: 2.71 min Scan# 349  
 Delta R.T. -0.02 min  
 Lab File: VX000402.D  
 Acq: 22 Mar 2018 13:32

Tgt Ion	Resp	Lower	Upper
41	100		
39	23.9	57.6	86.4#
76	0.0	27.3	40.9#

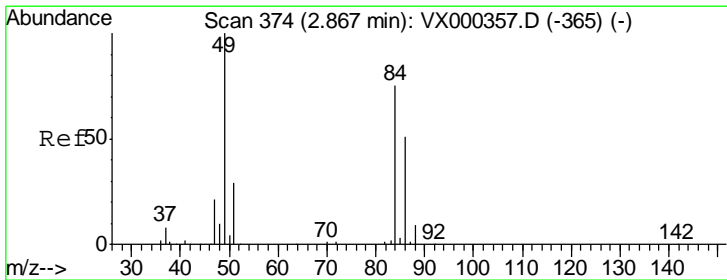
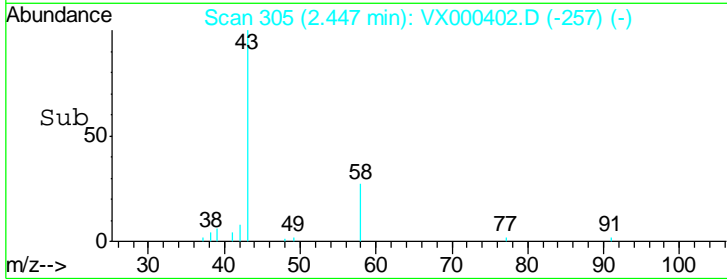
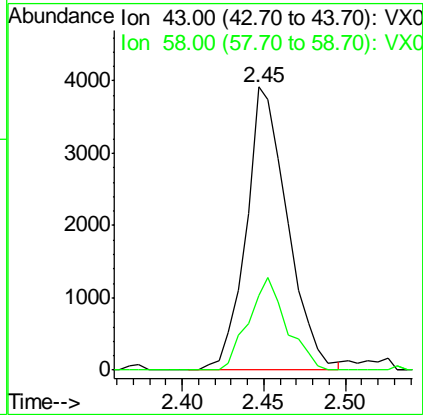
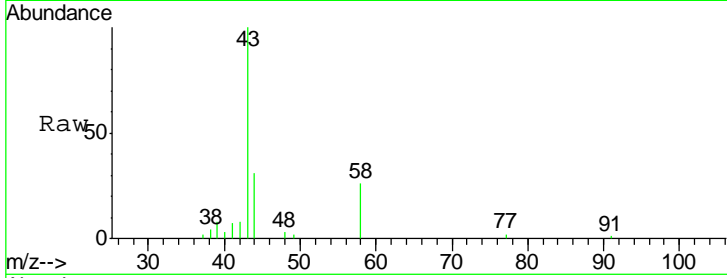




#16  
 Acetone  
 Concen: 6.66 ug/l  
 RT: 2.45 min Scan# 305  
 Delta R.T. -0.01 min  
 Lab File: VX000402.D  
 Acq: 22 Mar 2018 13:32

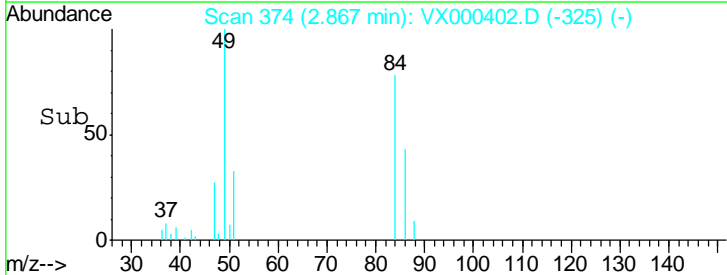
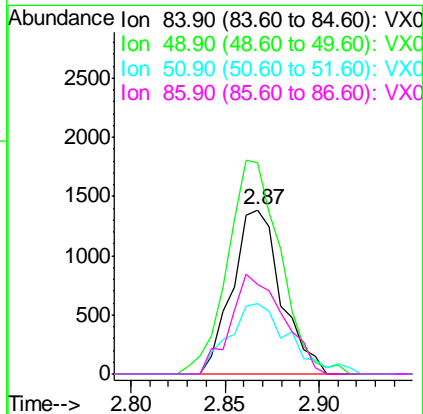
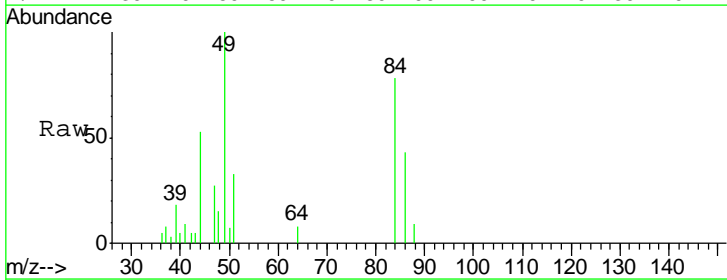
Instrument :  
 MSVOA\_X  
 ClientSampled :  
 WELL-B

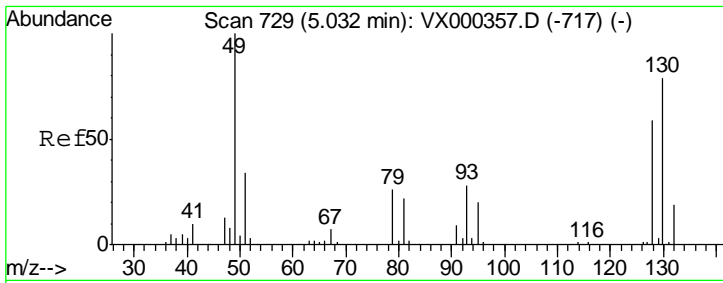
Tgt Ion: 43 Resp: 6889  
 Ion Ratio Lower Upper  
 43 100  
 58 26.4 24.7 37.1



#20  
 Methylene Chloride  
 Concen: 2.08 ug/l  
 RT: 2.87 min Scan# 374  
 Delta R.T. 0.00 min  
 Lab File: VX000402.D  
 Acq: 22 Mar 2018 13:32

Tgt Ion: 84 Resp: 2483  
 Ion Ratio Lower Upper  
 84 100  
 49 123.9 100.6 151.0  
 51 42.7 31.6 47.4  
 86 54.8 52.6 78.8

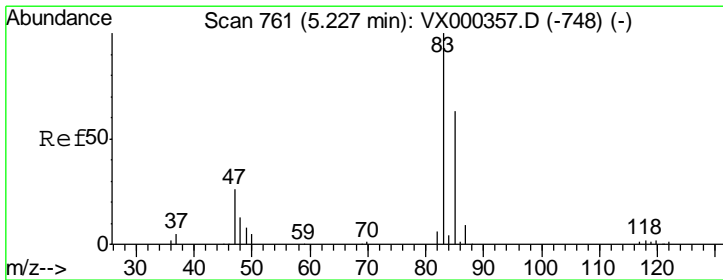
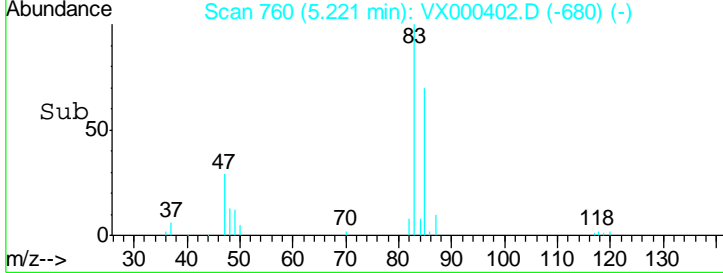
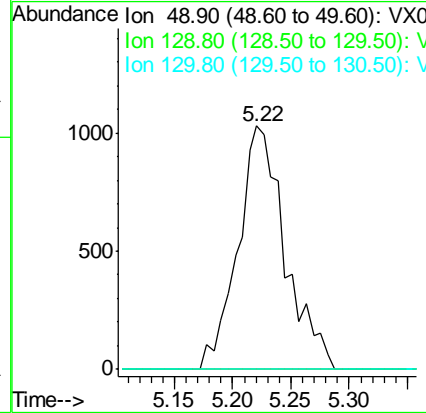
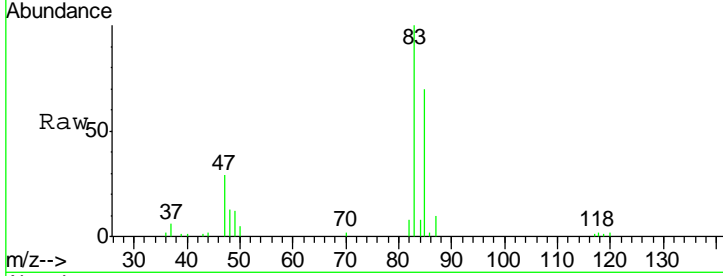




#28  
 Bromochloromethane  
 Concen: 3.47 ug/l  
 RT: 5.22 min Scan# 760  
 Delta R.T. 0.19 min  
 Lab File: VX000402.D  
 Acq: 22 Mar 2018 13:32

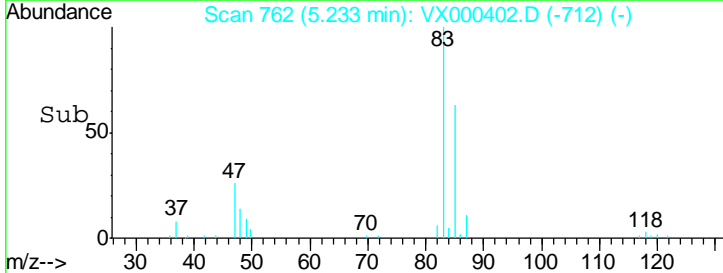
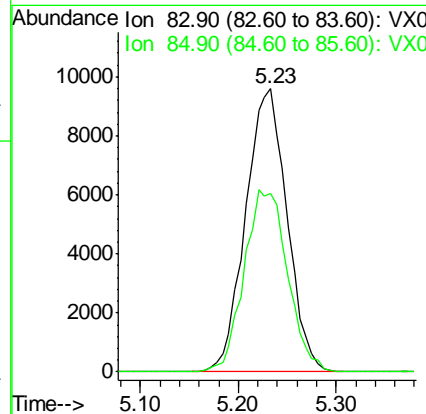
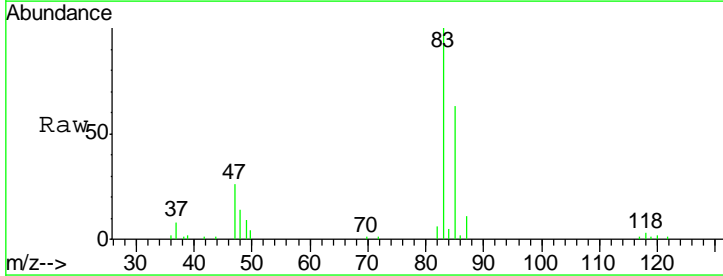
Instrument :  
 MSVOA\_X  
 ClientSampled :  
 WELL-B

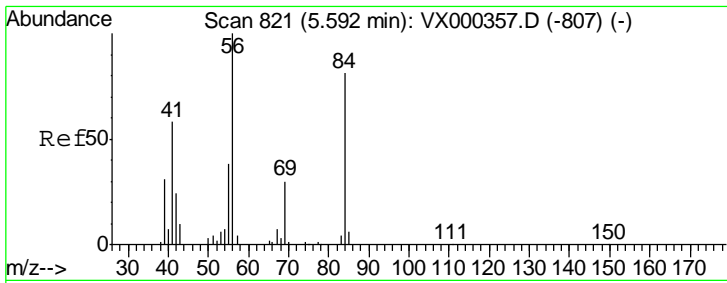
Tgt Ion	Resp	Lower	Upper
49	100		
129	0.0	0.0	5.0
130	0.0	64.0	96.0



#30  
 Chloroform  
 Concen: 14.80 ug/l  
 RT: 5.23 min Scan# 762  
 Delta R.T. 0.01 min  
 Lab File: VX000402.D  
 Acq: 22 Mar 2018 13:32

Tgt Ion	Resp	Lower	Upper
83	100		
85	63.2	53.3	79.9

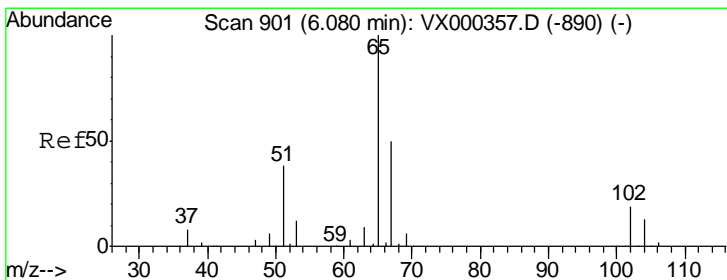
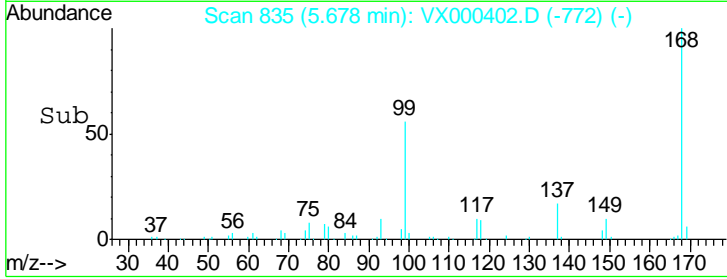
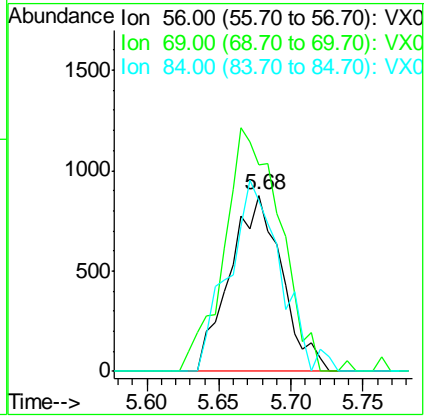
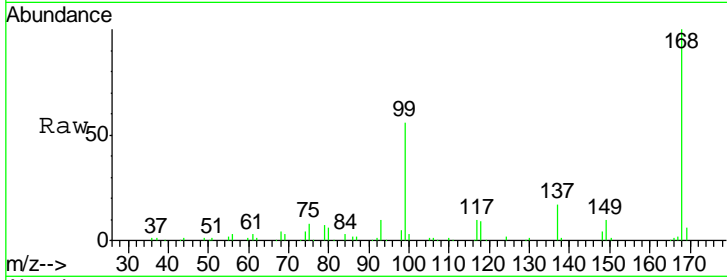




#31  
 Cyclohexane  
 Concen: 1.40 ug/l  
 RT: 5.68 min Scan# 835  
 Delta R.T. 0.09 min  
 Lab File: VX000402.D  
 Acq: 22 Mar 2018 13:32

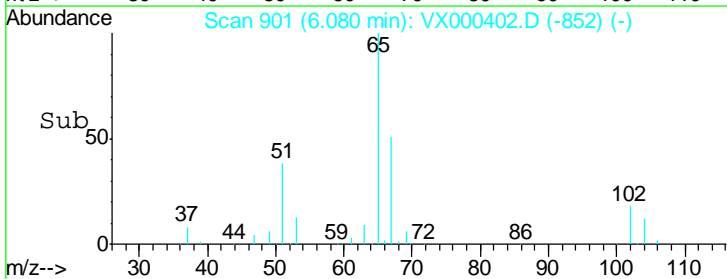
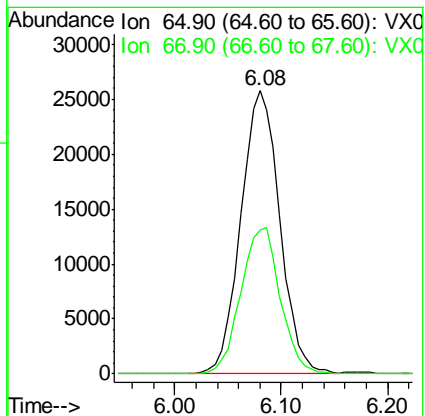
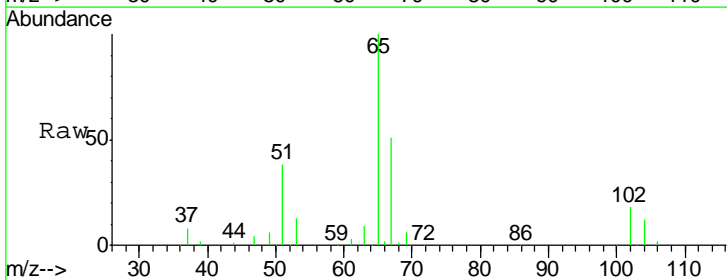
Instrument : MSVOA\_X  
 ClientSampled : WELL-B

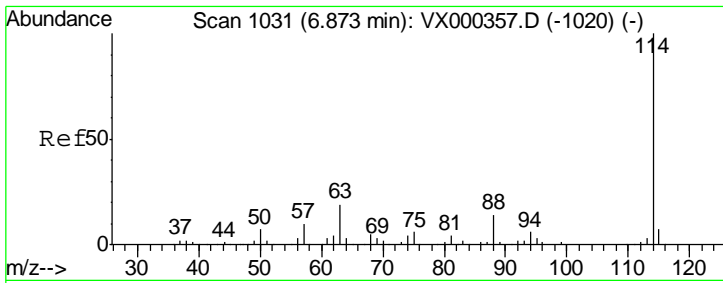
Tgt Ion	Resp	Lower	Upper
56	2191		
69	117.5	23.4	35.0#
84	97.1	71.0	106.4



#33  
 1,2-Dichloroethane-d4  
 Concen: 53.24 ug/l  
 RT: 6.08 min Scan# 901  
 Delta R.T. 0.00 min  
 Lab File: VX000402.D  
 Acq: 22 Mar 2018 13:32

Tgt Ion	Resp	Lower	Upper
65	66201		
67	52.4	0.0	103.2

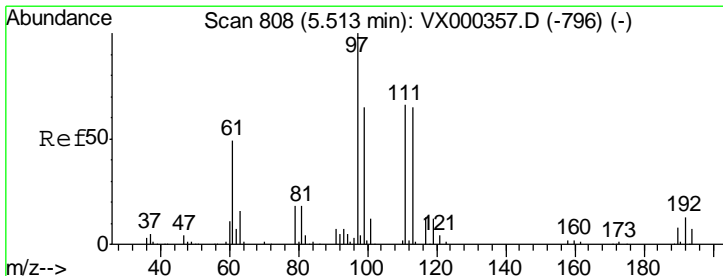
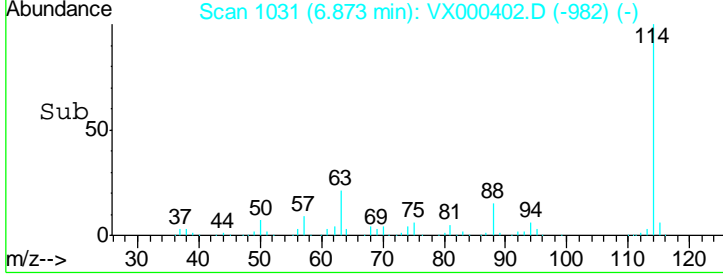
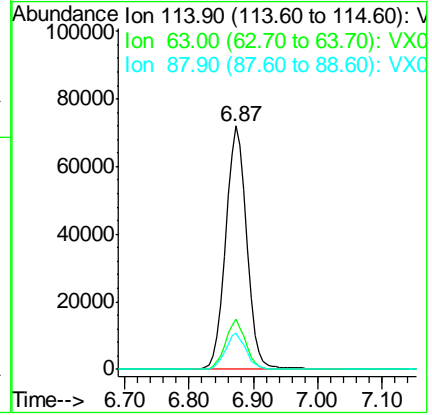
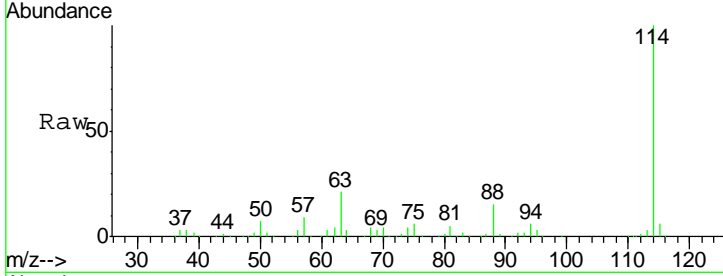




#34  
 1,4-Difluorobenzene  
 Concen: 50.00 ug/l  
 RT: 6.87 min Scan# 1031  
 Delta R.T. 0.00 min  
 Lab File: VX000402.D  
 Acq: 22 Mar 2018 13:32

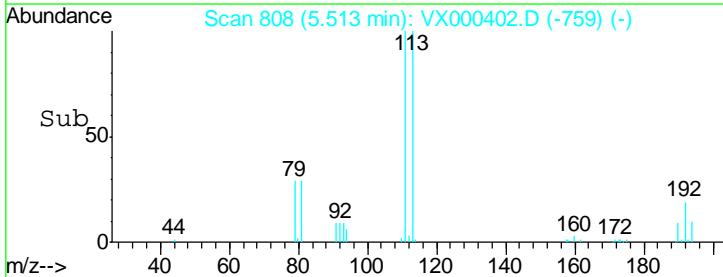
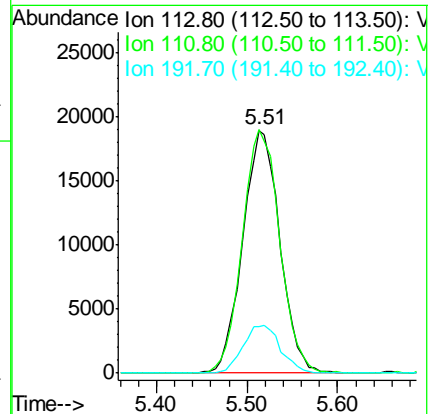
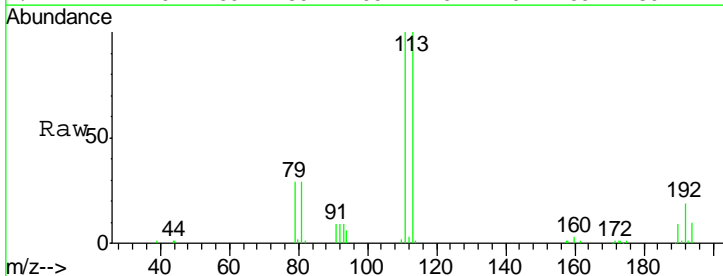
Instrument : MSVOA\_X  
 ClientSampled : WELL-B

Tgt Ion	Resp	Lower	Upper
114	167293		
63	20.5	0.0	38.4
88	14.6	0.0	27.0

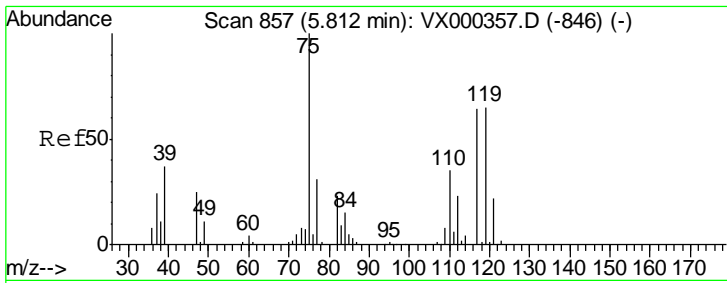


#35  
 Dibromofluoromethane  
 Concen: 50.83 ug/l  
 RT: 5.51 min Scan# 808  
 Delta R.T. 0.00 min  
 Lab File: VX000402.D  
 Acq: 22 Mar 2018 13:32

Tgt Ion	Resp	Lower	Upper
113	53575		
111	101.5	82.4	123.6
192	19.8	15.8	23.6



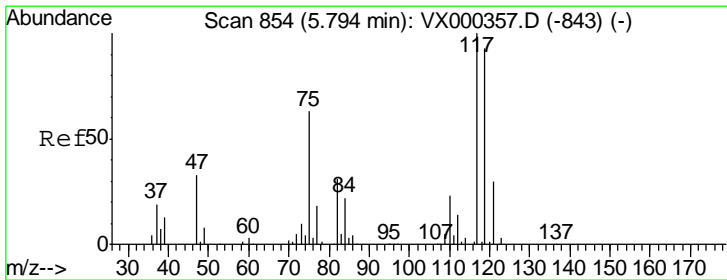
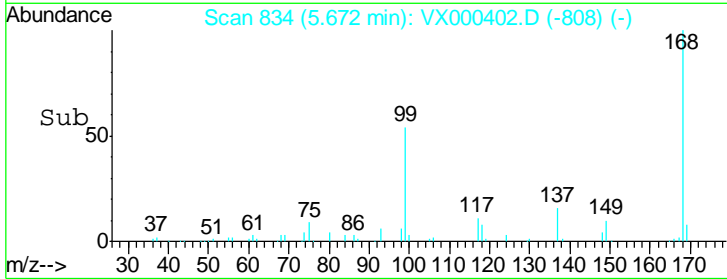
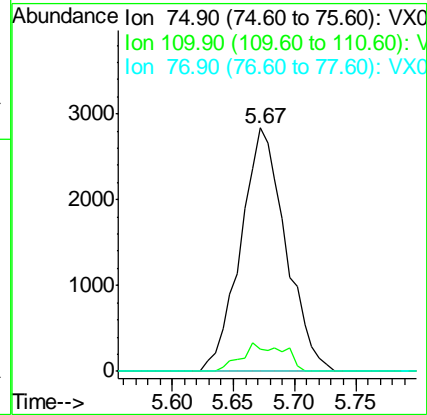
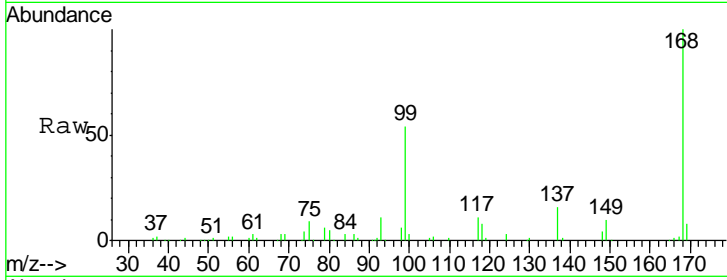




#36  
 1,1-Dichloropropene  
 Concen: 4.62 ug/l  
 RT: 5.67 min Scan# 834  
 Delta R.T. -0.14 min  
 Lab File: VX000402.D  
 Acq: 22 Mar 2018 13:32

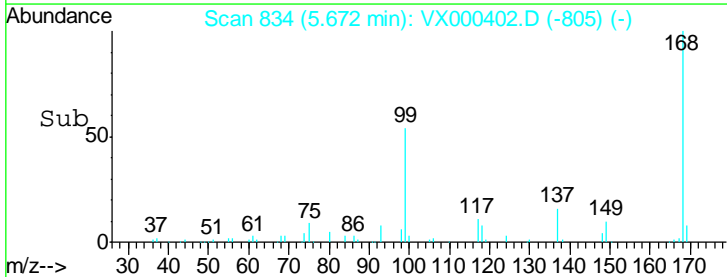
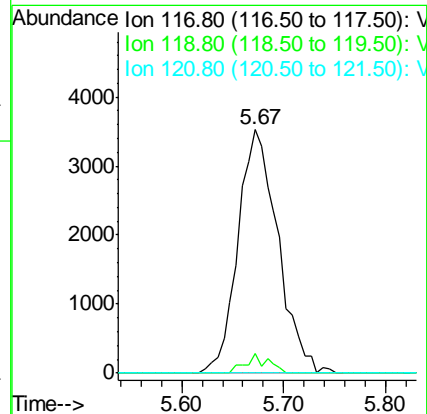
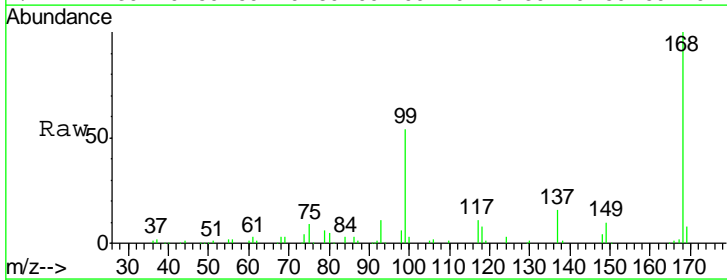
Instrument :  
 MSVOA\_X  
 ClientSampled :  
 WELL-B

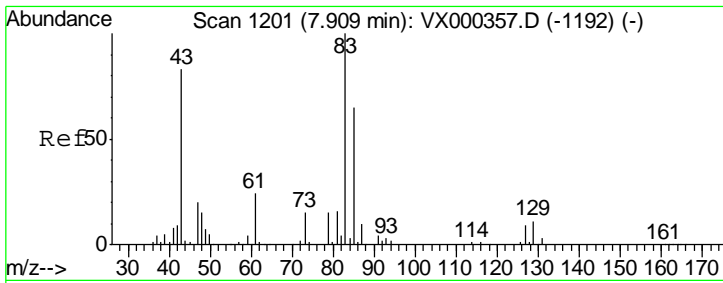
Tgt Ion	Resp	Lower	Upper
75	100		
110	10.9	17.9	53.7#
77	0.0	24.0	36.0#



#38  
 Carbon Tetrachloride  
 Concen: 5.81 ug/l  
 RT: 5.67 min Scan# 834  
 Delta R.T. -0.12 min  
 Lab File: VX000402.D  
 Acq: 22 Mar 2018 13:32

Tgt Ion	Resp	Lower	Upper
117	100		
119	8.2	77.4	116.2#
121	0.0	24.8	37.2#

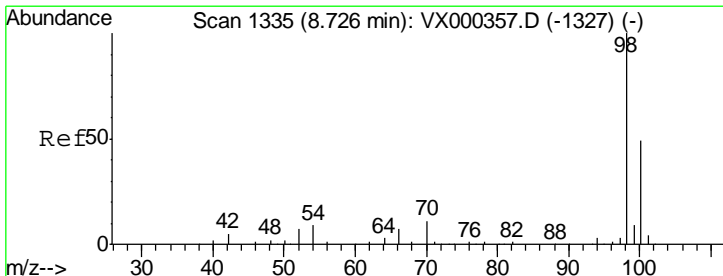
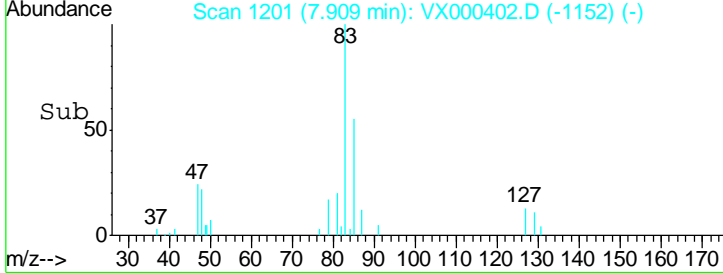
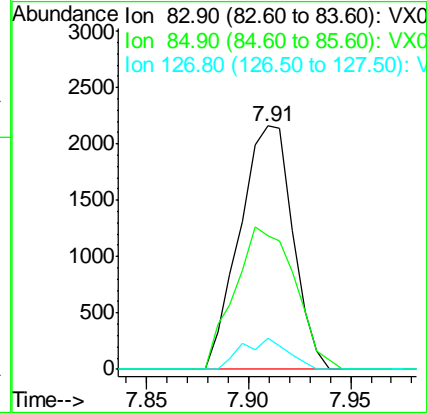
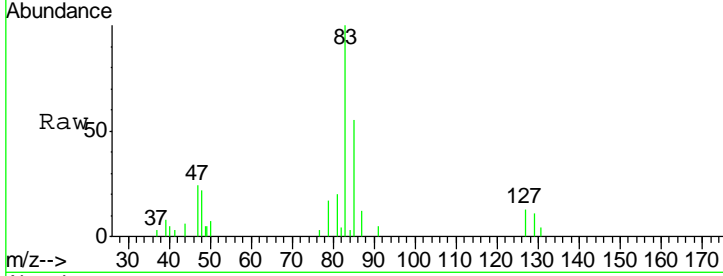




#47  
 Bromodichloromethane  
 Concen: 2.43 ug/l  
 RT: 7.91 min Scan# 1201  
 Delta R.T. 0.00 min  
 Lab File: VX000402.D  
 Acq: 22 Mar 2018 13:32

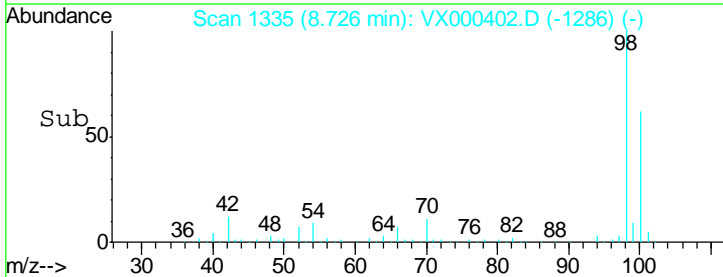
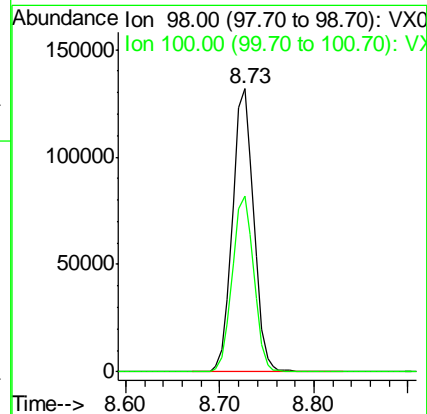
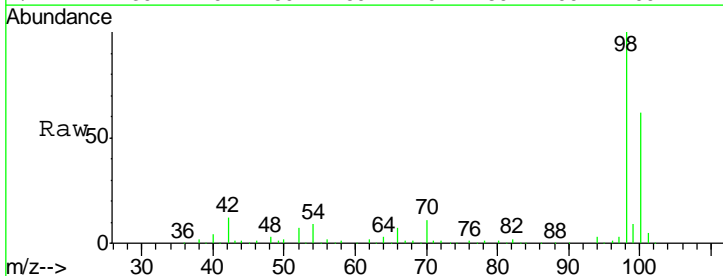
Instrument :  
 MSVOA\_X  
 ClientSampled :  
 WELL-B

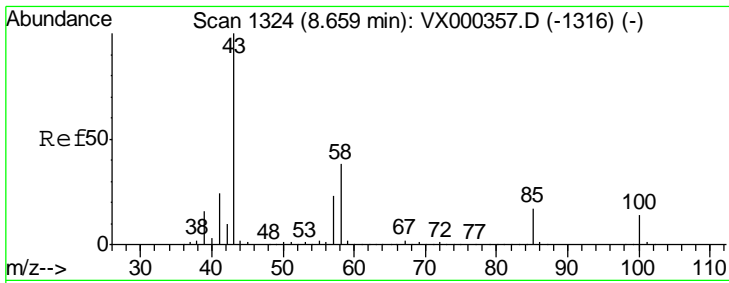
Tgt Ion	Resp	Lower	Upper
83	3914		
85	54.6	51.4	77.0
127	12.7	7.0	10.6#



#50  
 Toluene-d8  
 Concen: 47.40 ug/l  
 RT: 8.73 min Scan# 1335  
 Delta R.T. 0.00 min  
 Lab File: VX000402.D  
 Acq: 22 Mar 2018 13:32

Tgt Ion	Resp	Lower	Upper
98	206936		
100	63.2	51.2	76.8

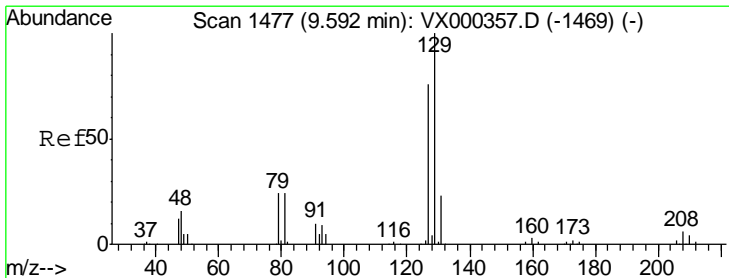
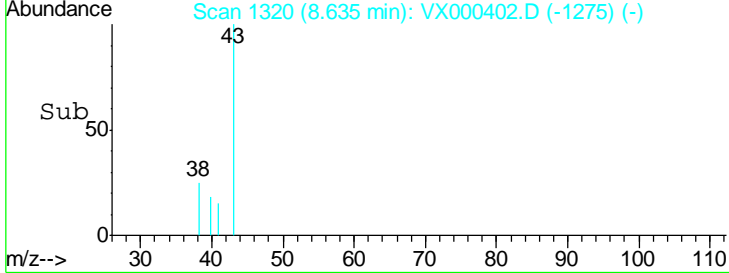
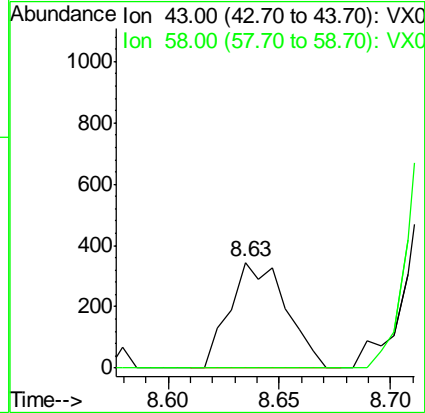
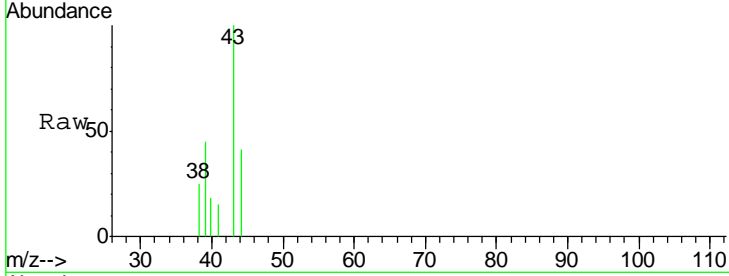




#51  
 4-Methyl-2-Pentanone  
 Concen: 0.25 ug/l  
 RT: 8.63 min Scan# 1320  
 Delta R.T. -0.02 min  
 Lab File: VX000402.D  
 Acq: 22 Mar 2018 13:32

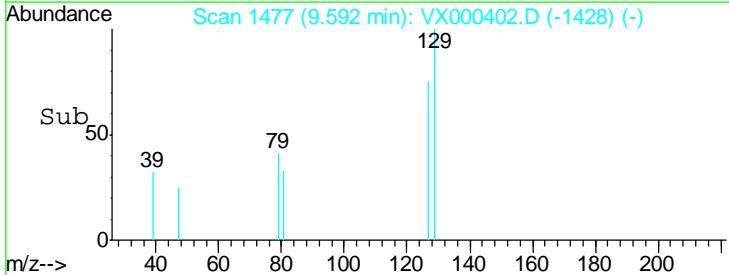
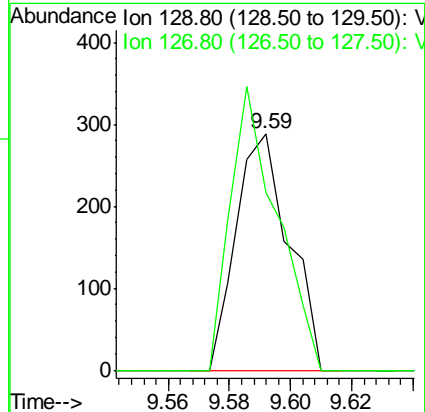
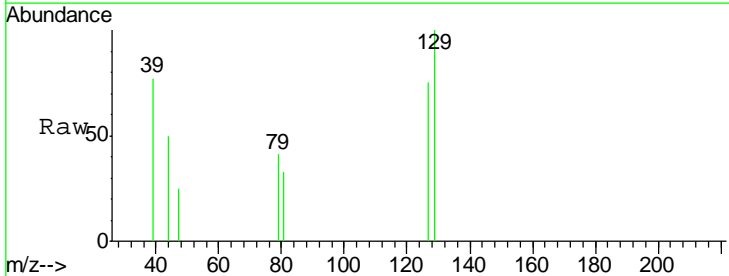
Instrument : MSVOA\_X  
 ClientSampled : WELL-B

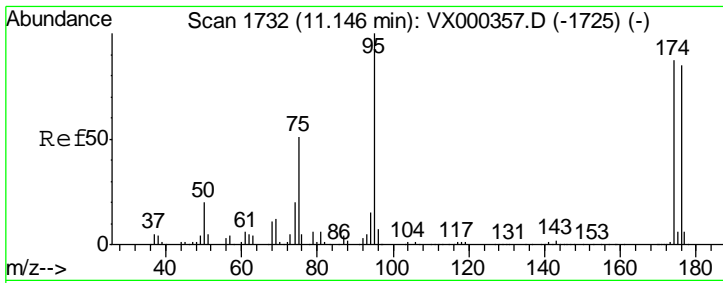
Tgt Ion: 43 Resp: 607  
 Ion Ratio Lower Upper  
 43 100  
 58 0.0 30.3 45.5#



#60  
 Dibromochloromethane  
 Concen: 4.32 ug/l  
 RT: 9.59 min Scan# 1477  
 Delta R.T. 0.00 min  
 Lab File: VX000402.D  
 Acq: 22 Mar 2018 13:32

Tgt Ion: 129 Resp: 346  
 Ion Ratio Lower Upper  
 129 100  
 127 105.5 37.9 113.6

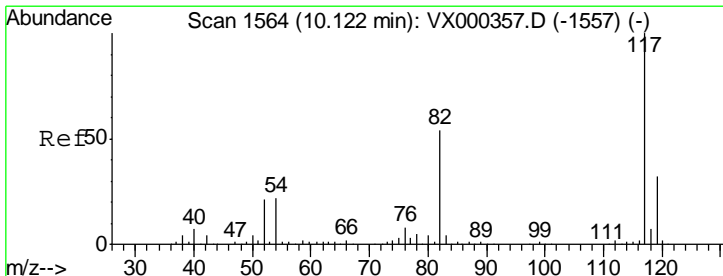
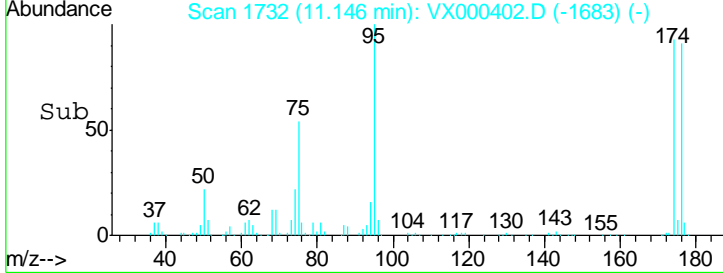
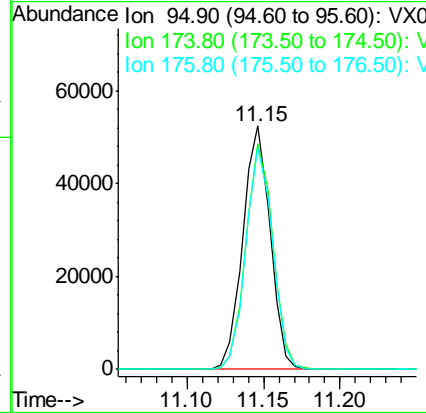
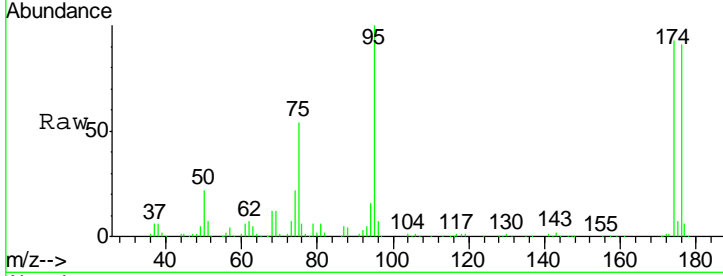




#62  
 4-Bromofluorobenzene  
 Concen: 36.94 ug/l  
 RT: 11.15 min Scan# 1732  
 Delta R.T. 0.00 min  
 Lab File: VX000402.D  
 Acq: 22 Mar 2018 13:32

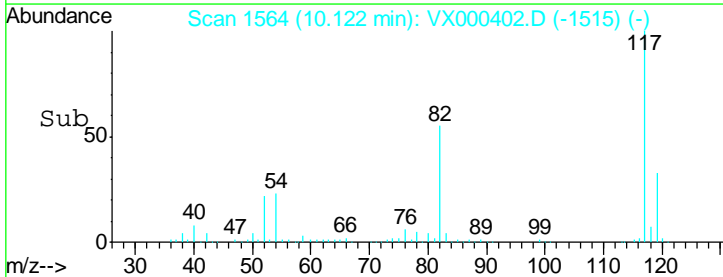
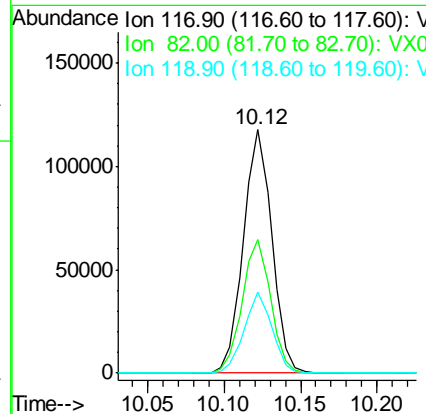
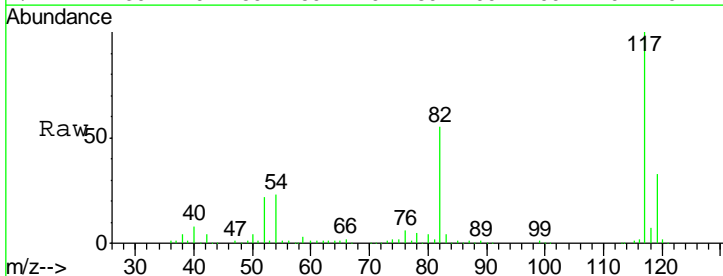
Instrument : MSVOA\_X  
 ClientSampled : WELL-B

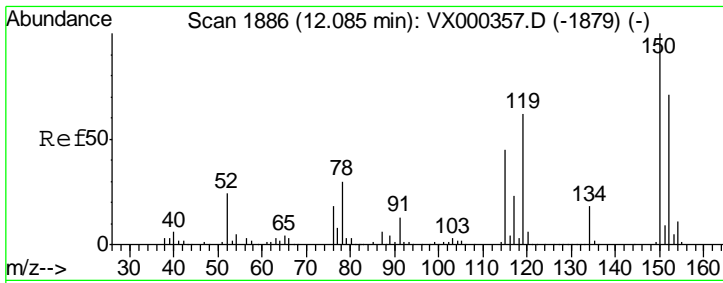
Tgt Ion	Resp	Lower	Upper
95	64746		
174	92.3	0.0	173.6
176	89.7	0.0	164.6



#63  
 Chlorobenzene-d5  
 Concen: 50.00 ug/l  
 RT: 10.12 min Scan# 1564  
 Delta R.T. 0.00 min  
 Lab File: VX000402.D  
 Acq: 22 Mar 2018 13:32

Tgt Ion	Resp	Lower	Upper
117	152358		
82	55.0	43.8	65.8
119	33.3	24.9	37.3

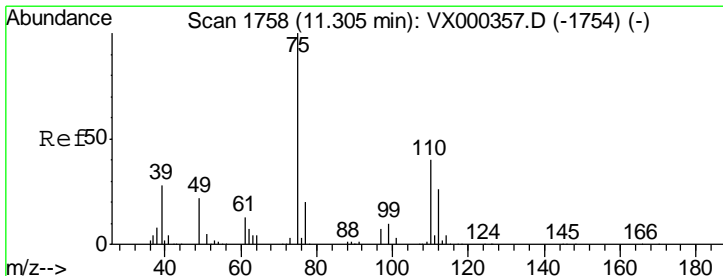
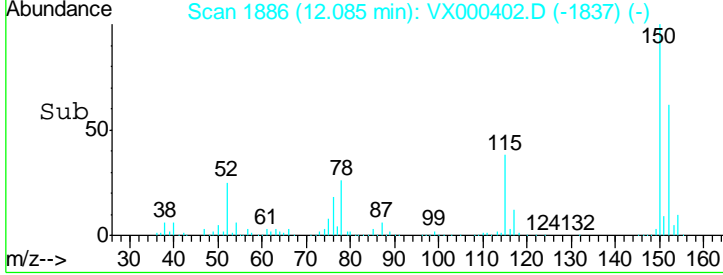
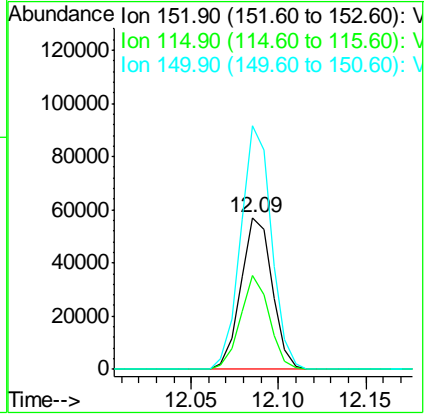
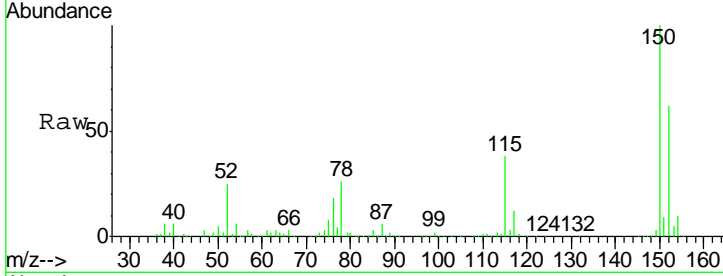




#72  
 1,4-Dichlorobenzene-d4  
 Concen: 50.00 ug/l  
 RT: 12.09 min Scan# 1886  
 Delta R.T. 0.00 min  
 Lab File: VX000402.D  
 Acq: 22 Mar 2018 13:32

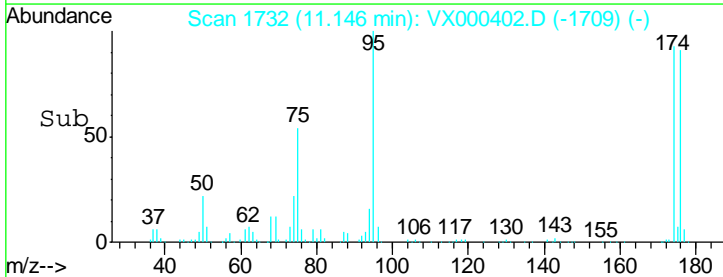
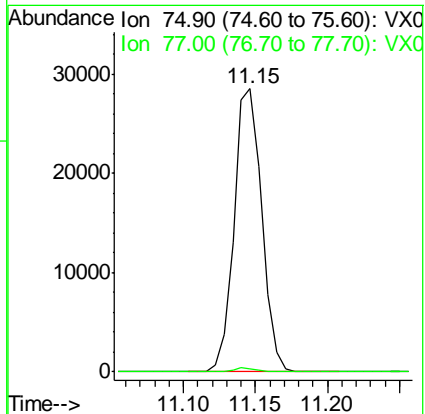
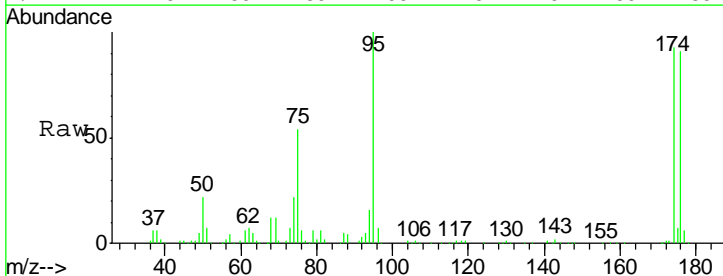
Instrument : MSVOA\_X  
 ClientSampled : WELL-B

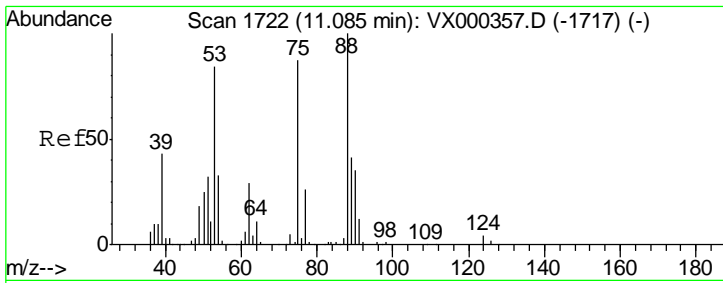
Tgt Ion	Resp	Lower	Upper
152	100		
115	57.5	39.8	119.3
150	157.9	0.0	344.4



#76  
 1,2,3-Trichloropropane  
 Concen: 25.07 ug/l  
 RT: 11.15 min Scan# 1732  
 Delta R.T. -0.16 min  
 Lab File: VX000402.D  
 Acq: 22 Mar 2018 13:32

Tgt Ion	Resp	Lower	Upper
75	100		
77	1.2	21.4	64.2#

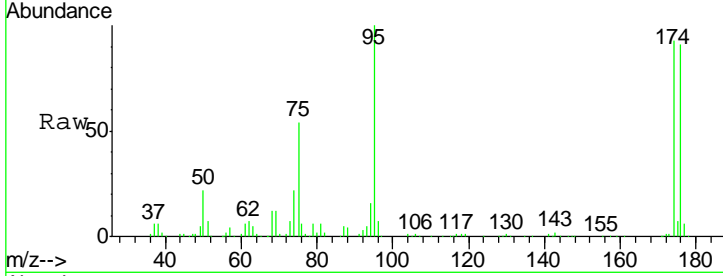




#81  
 trans-1,4-Dichloro-2-butene  
 Concen: 81.16 ug/l  
 RT: 11.15 min Scan# 1732  
 Delta R.T. 0.06 min  
 Lab File: VX000402.D  
 Acq: 22 Mar 2018 13:32

Instrument :  
 MSVOA\_X  
 ClientSampled :  
 WELL-B

Tgt Ion	Resp	Lower	Upper
75	38259		
75	100		
53	0.0	80.7	121.1#
89	0.0	39.4	59.0#



Abundance Ion 74.90 (74.60 to 75.60): VX0  
 Ion 53.00 (52.70 to 53.70): VX0  
 Ion 88.90 (88.60 to 89.60): VX0

