

Data Path : W:\HPCHEM1\MSVOA X\DATA\VX032218\
 Data File : VX000401.D
 Acq On : 22 Mar 2018 13:06
 Operator : JC/MD
 Sample : J1992-03
 Misc : 5.0mL/MSVOA X/WATER
 ALS Vial : 5 Sample Multiplier: 1

Instrument :
 MSVOA_X
Client Sampled :
 DRUM-1-4-B

Quant Time: Mar 23 06:00:40 2018
 Quant Method : W:\HPCHEM1\MSVOA_X\METHOD\82X032018W.M
 Quant Title : SW846 8260
 QLast Update : Wed Mar 21 04:52:42 2018
 Response via : Initial Calibration

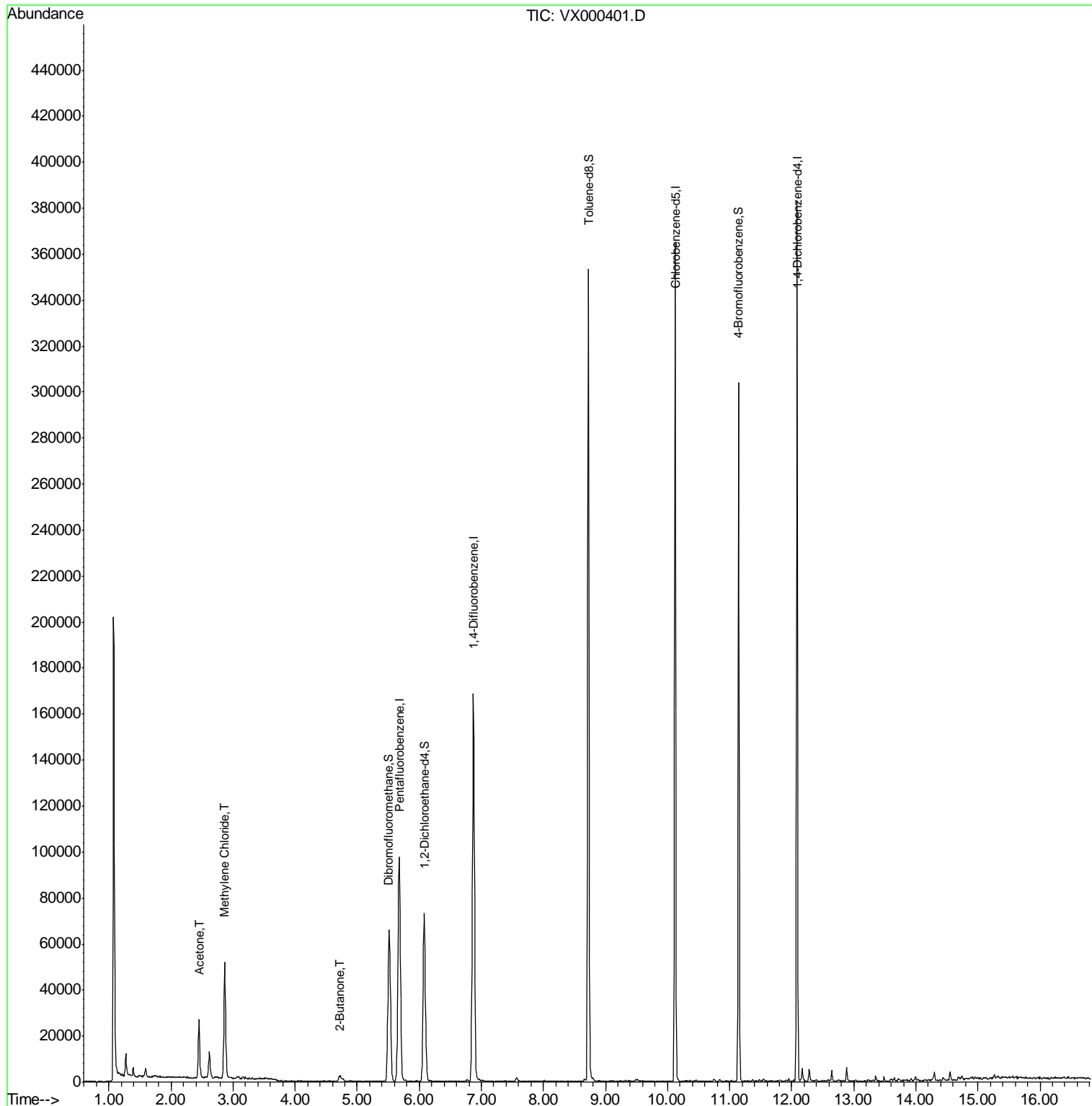
Internal Standards	R.T.	QIon	Response	Conc	Units	Dev(Min)
1) Pentafluorobenzene	5.68	168	96317	50.00	ug/l	0.00
34) 1,4-Difluorobenzene	6.87	114	162183	50.00	ug/l	0.00
63) Chlorobenzene-d5	10.12	117	154314	50.00	ug/l	0.00
72) 1,4-Dichlorobenzene-d4	12.08	152	72554	50.00	ug/l	0.00
System Monitoring Compounds						
33) 1,2-Dichloroethane-d4	6.08	65	67516	53.70	ug/l	0.00
Spiked Amount	50.000		Recovery	=	107.40%	
35) Dibromofluoromethane	5.51	113	52089	50.97	ug/l	0.00
Spiked Amount	50.000		Recovery	=	101.94%	
50) Toluene-d8	8.73	98	204332	48.28	ug/l	0.00
Spiked Amount	50.000		Recovery	=	96.56%	
62) 4-Bromofluorobenzene	11.15	95	66706	38.87	ug/l	0.00
Spiked Amount	50.000		Recovery	=	77.74%	
Target Compounds						
16) Acetone	2.45	43	26321	25.17	ug/l	96
20) Methylene Chloride	2.87	84	22647	18.75	ug/l	90
25) 2-Butanone	4.72	43	4334	3.69	ug/l	94

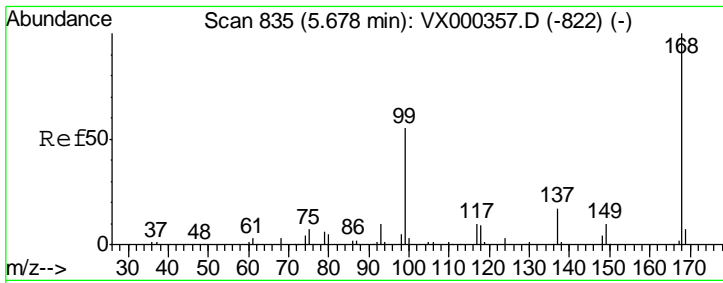
(#) = qualifier out of range (m) = manual integration (+) = signals summed

Data Path : W:\HPCHEM1\MSVOA X\DATA\VX032218\
 Data File : VX000401.D
 Acq On : 22 Mar 2018 13:06
 Operator : JC/MD
 Sample : J1992-03
 Misc : 5.0mL/MSVOA X/WATER
 ALS Vial : 5 Sample Multiplier: 1

Instrument :
 MSVOA_X
 Client Sampled :
 DRUM-1-4-B

Quant Time: Mar 23 06:00:40 2018
 Quant Method : W:\HPCHEM1\MSVOA_X\METHOD\82X032018W.M
 Quant Title : SW846 8260
 QLast Update : Wed Mar 21 04:52:42 2018
 Response via : Initial Calibration

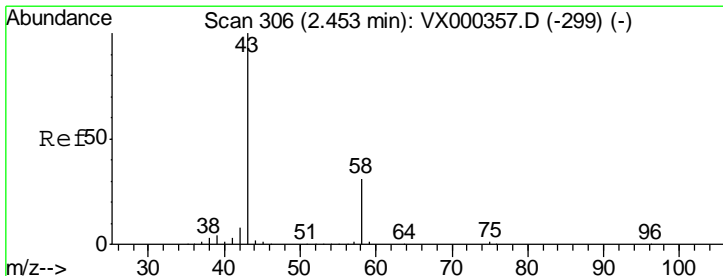
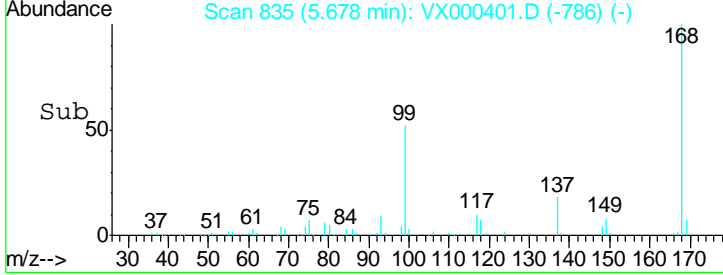
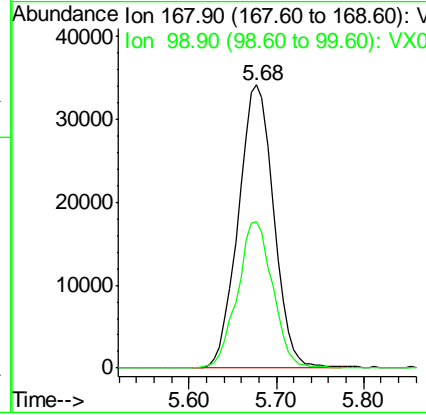
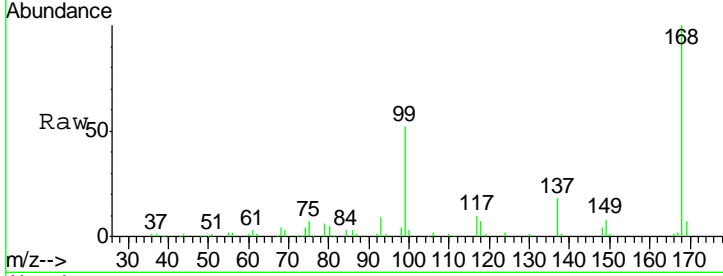




#1
 Pentafluorobenzene
 Concen: 50.00 ug/l
 RT: 5.68 min Scan# 835
 Delta R.T. -0.00 min
 Lab File: VX000401.D
 Acq: 22 Mar 2018 13:06

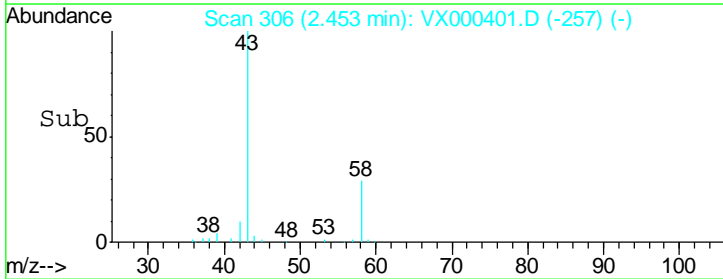
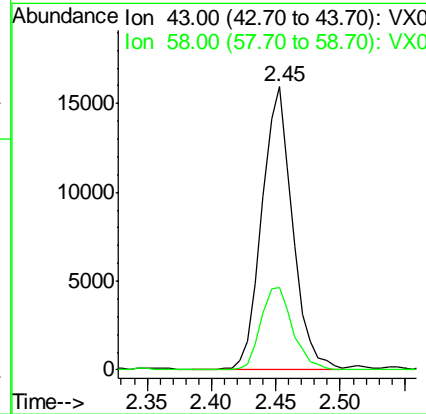
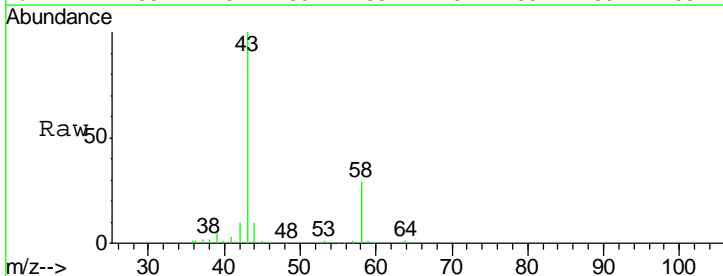
Instrument :
 MSVOA_X
ClientSampled :
 DRUM-1-4-B

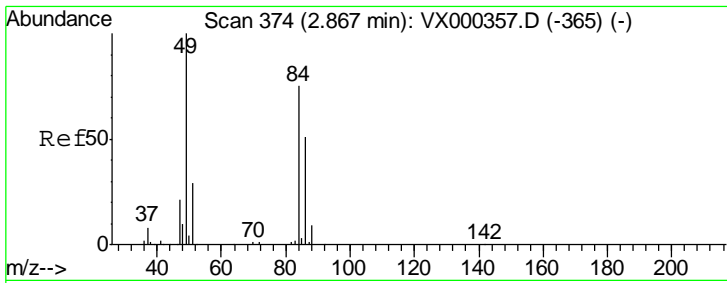
Tgt Ion	Resp	Lower	Upper
168	100		
99	51.6	45.8	68.6



#16
 Acetone
 Concen: 25.17 ug/l
 RT: 2.45 min Scan# 306
 Delta R.T. -0.00 min
 Lab File: VX000401.D
 Acq: 22 Mar 2018 13:06

Tgt Ion	Resp	Lower	Upper
43	100		
58	28.9	24.7	37.1

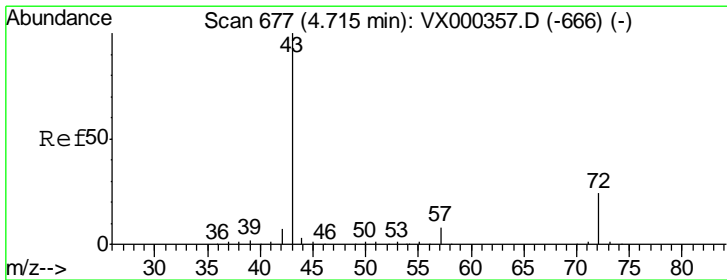
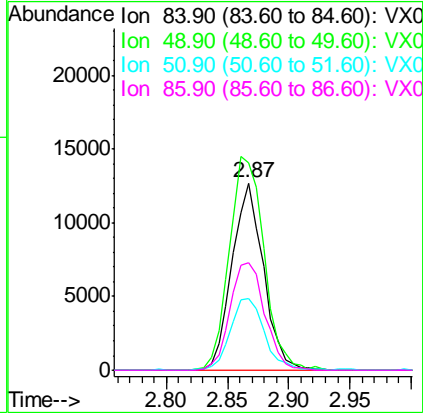
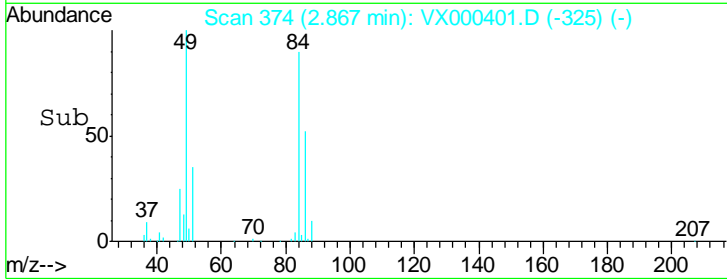
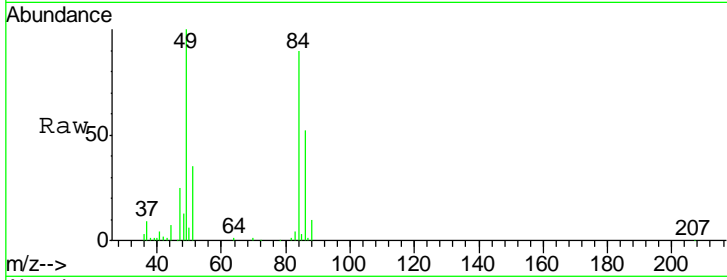




#20
 Methylene Chloride
 Concen: 18.75 ug/l
 RT: 2.87 min Scan# 374
 Delta R.T. -0.00 min
 Lab File: VX000401.D
 Acq: 22 Mar 2018 13:06

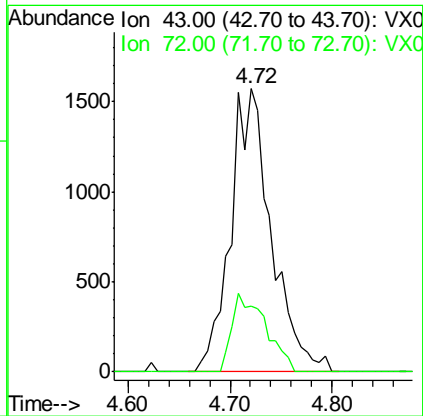
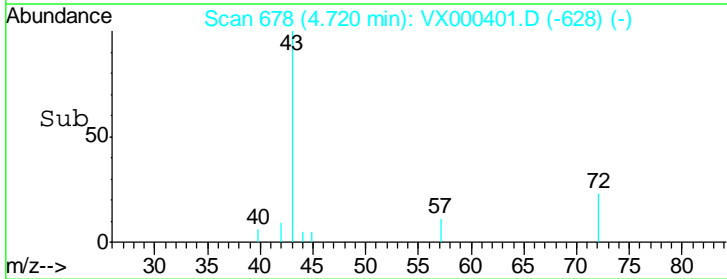
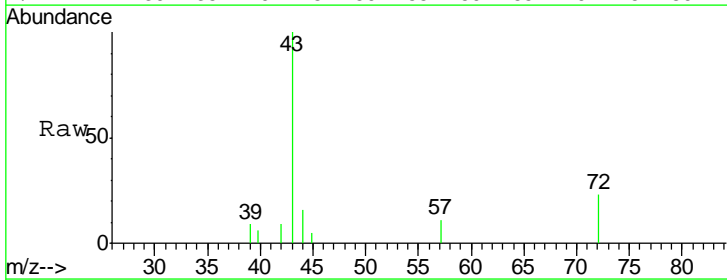
Instrument :
 MSVOA_X
ClientSampled :
 DRUM-1-4-B

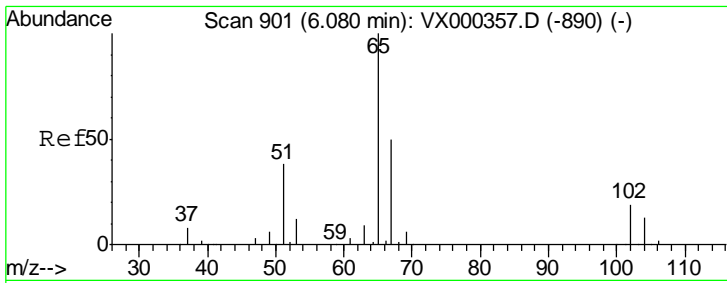
Tgt Ion	Resp	Lower	Upper
84	100		
49	110.8	100.6	151.0
51	38.4	31.6	47.4
86	57.3	52.6	78.8



#25
 2-Butanone
 Concen: 3.69 ug/l
 RT: 4.72 min Scan# 678
 Delta R.T. 0.01 min
 Lab File: VX000401.D
 Acq: 22 Mar 2018 13:06

Tgt Ion	Resp	Lower	Upper
43	100		
72	23.2	21.0	31.6

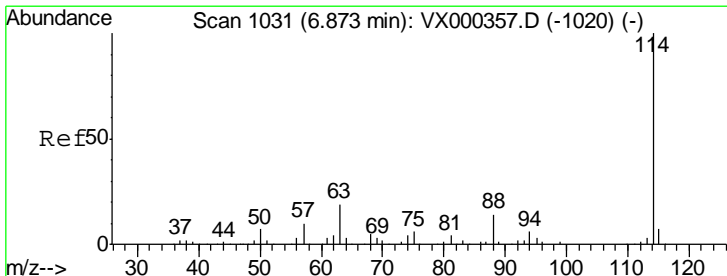
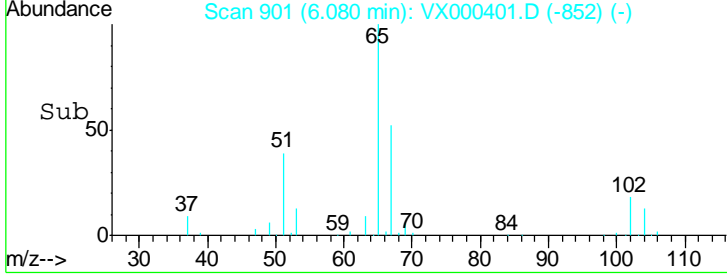
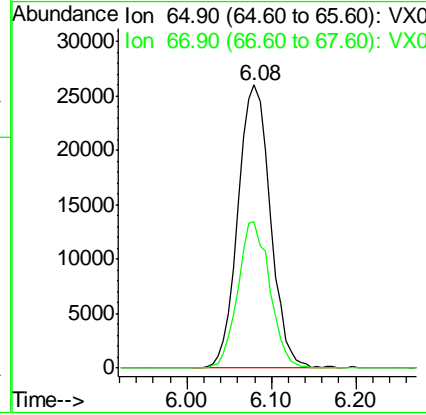
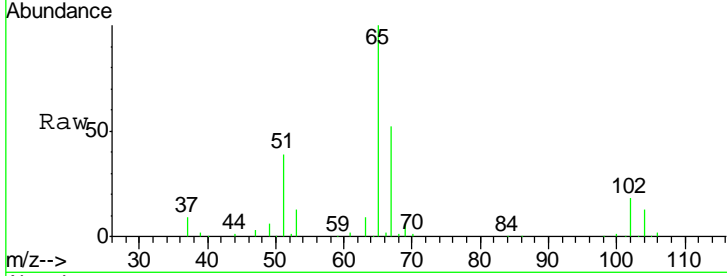




#33
 1,2-Dichloroethane-d4
 Concen: 53.70 ug/l
 RT: 6.08 min Scan# 901
 Delta R.T. -0.00 min
 Lab File: VX000401.D
 Acq: 22 Mar 2018 13:06

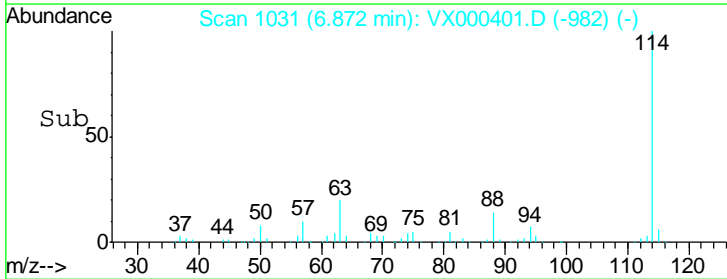
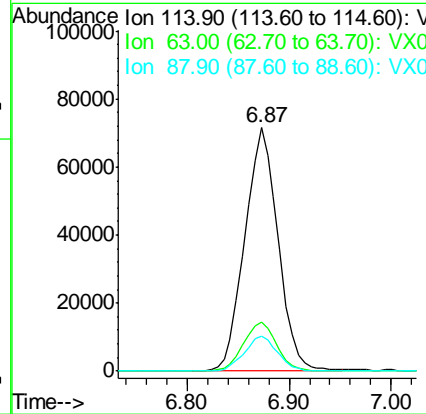
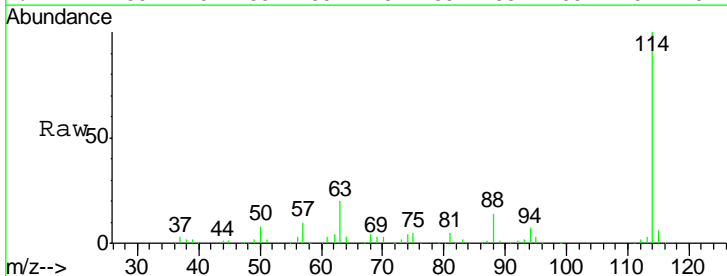
Instrument :
 MSVOA_X
ClientSampled :
 DRUM-1-4-B

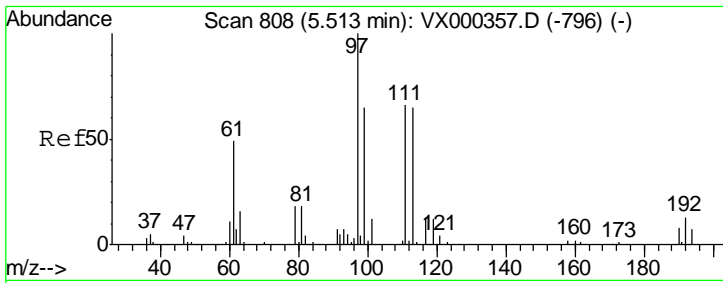
Tgt Ion	Resp	Lower	Upper
65	67516		
67	51.0	0.0	103.2



#34
 1,4-Difluorobenzene
 Concen: 50.00 ug/l
 RT: 6.87 min Scan# 1031
 Delta R.T. -0.00 min
 Lab File: VX000401.D
 Acq: 22 Mar 2018 13:06

Tgt Ion	Resp	Lower	Upper
114	162183		
63	20.2	0.0	38.4
88	14.4	0.0	27.0

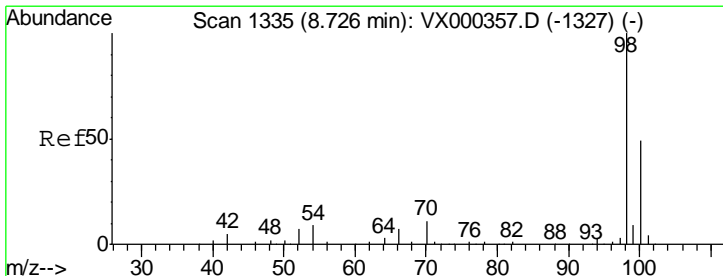
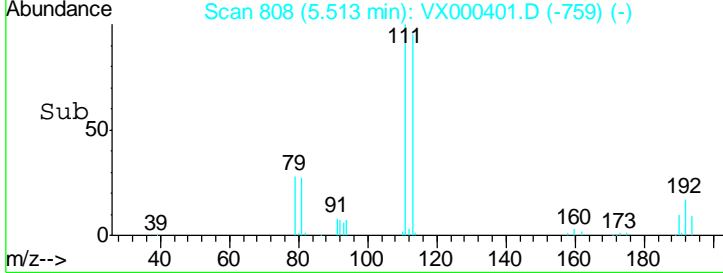
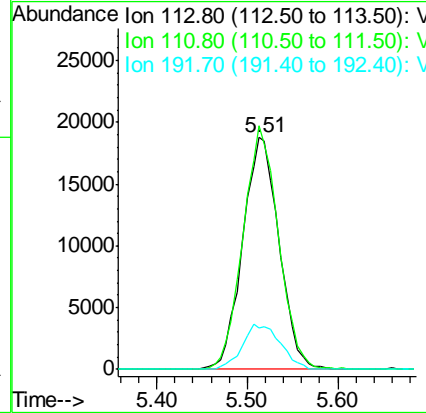
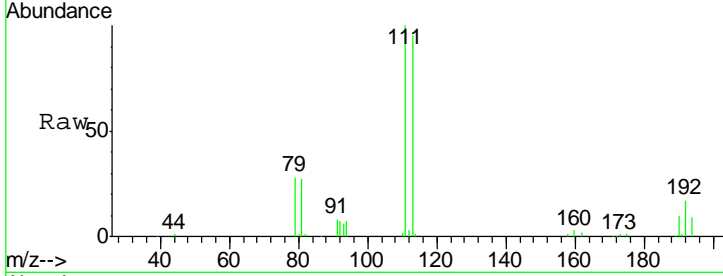




#35
 Dibromofluoromethane
 Concen: 50.97 ug/l
 RT: 5.51 min Scan# 808
 Delta R.T. -0.00 min
 Lab File: VX000401.D
 Acq: 22 Mar 2018 13:06

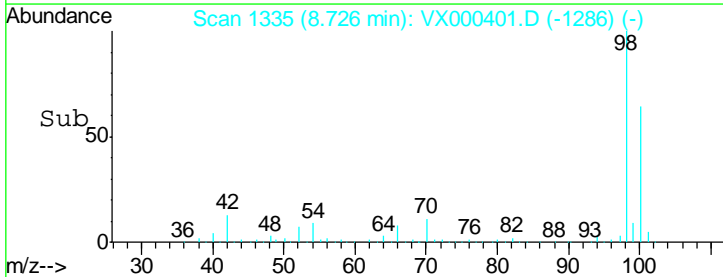
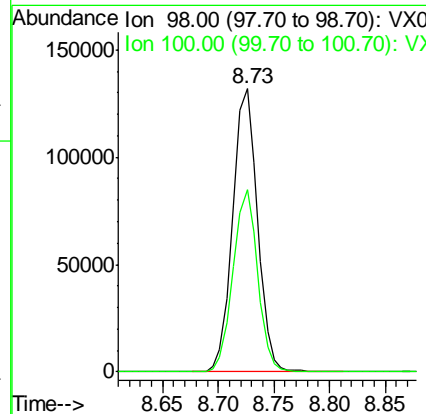
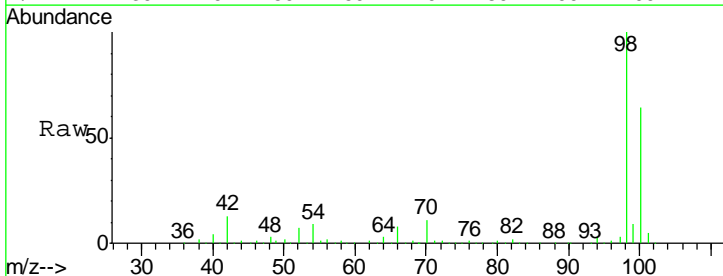
Instrument :
 MSVOA_X
 ClientSampled :
 DRUM-1-4-B

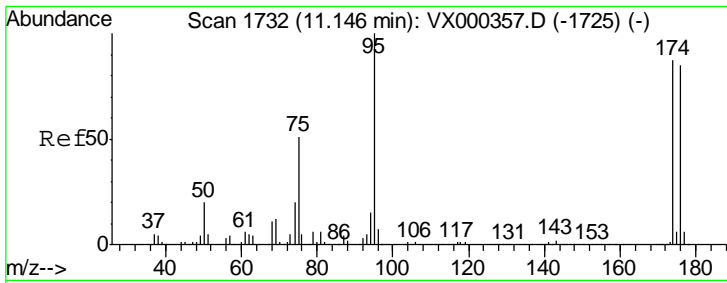
Tgt Ion	Resp	Lower	Upper
113	52089		
111	102.6	82.4	123.6
192	20.2	15.8	23.6



#50
 Toluene-d8
 Concen: 48.28 ug/l
 RT: 8.73 min Scan# 1335
 Delta R.T. -0.00 min
 Lab File: VX000401.D
 Acq: 22 Mar 2018 13:06

Tgt Ion	Resp	Lower	Upper
98	204332		
100	63.9	51.2	76.8

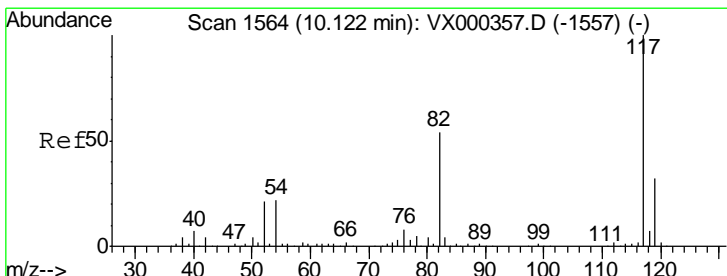
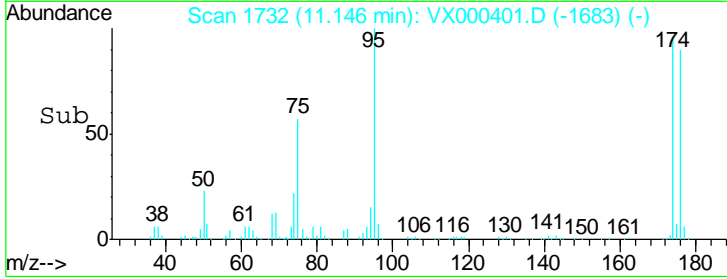
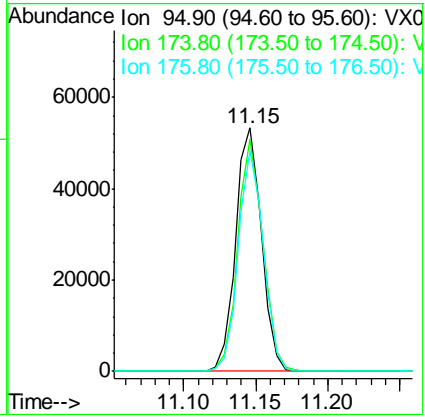
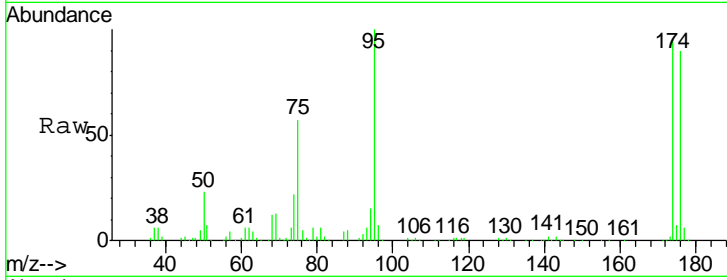




#62
 4-Bromofluorobenzene
 Concen: 38.87 ug/l
 RT: 11.15 min Scan# 1732
 Delta R.T. 0.00 min
 Lab File: VX000401.D
 Acq: 22 Mar 2018 13:06

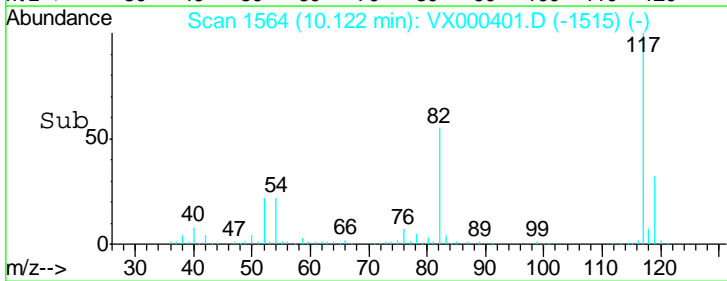
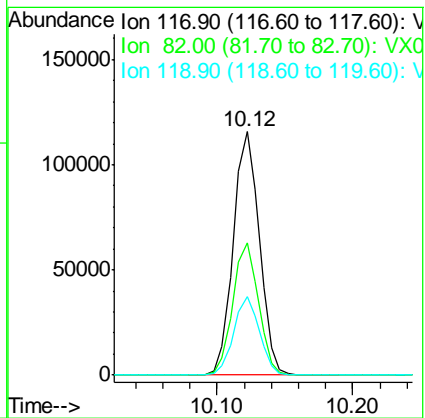
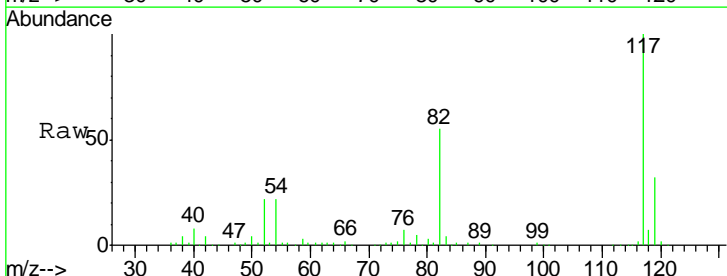
Instrument : MSVOA_X
 ClientSampled : DRUM-1-4-B

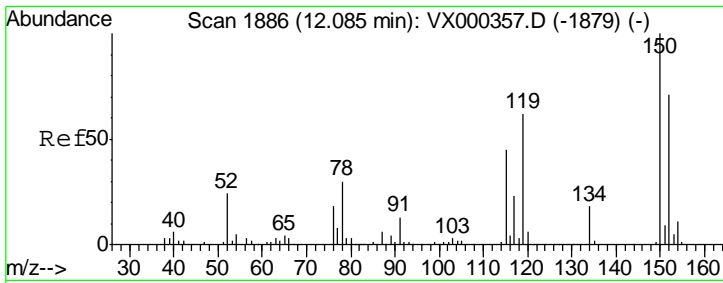
Tgt Ion	Resp	Lower	Upper
95	66706		
174	92.8	0.0	173.6
176	87.7	0.0	164.6



#63
 Chlorobenzene-d5
 Concen: 50.00 ug/l
 RT: 10.12 min Scan# 1564
 Delta R.T. -0.00 min
 Lab File: VX000401.D
 Acq: 22 Mar 2018 13:06

Tgt Ion	Resp	Lower	Upper
117	154314		
82	54.5	43.8	65.8
119	32.0	24.9	37.3





#72
 1,4-Dichlorobenzene-d4
 Concen: 50.00 ug/l
 RT: 12.08 min Scan# 1886
 Delta R.T. -0.00 min
 Lab File: VX000401.D
 Acq: 22 Mar 2018 13:06

Instrument : MSVOA_X
 ClientSampled : DRUM-1-4-B

Tot Ion	Resp	Lower	Upper
152	100		
115	54.8	39.8	119.3
150	156.3	0.0	344.4

