

Data Path : W:\HPCHEM1\MSVOA X\DATA\VX032218\  
 Data File : VX000409.D  
 Acq On : 22 Mar 2018 16:29  
 Operator : JC/MD  
 Sample : J2005-04  
 Misc : 5.0mL/MSVOA X/WATER  
 ALS Vial : 13 Sample Multiplier: 1

Instrument :  
 MSVOA\_X  
 ClientSampleId :  
 CARBON-2-031918

Quant Time: Mar 23 06:14:37 2018  
 Quant Method : W:\HPCHEM1\MSVOA\_X\METHOD\82X032018W.M  
 Quant Title : SW846 8260  
 QLast Update : Wed Mar 21 04:52:42 2018  
 Response via : Initial Calibration

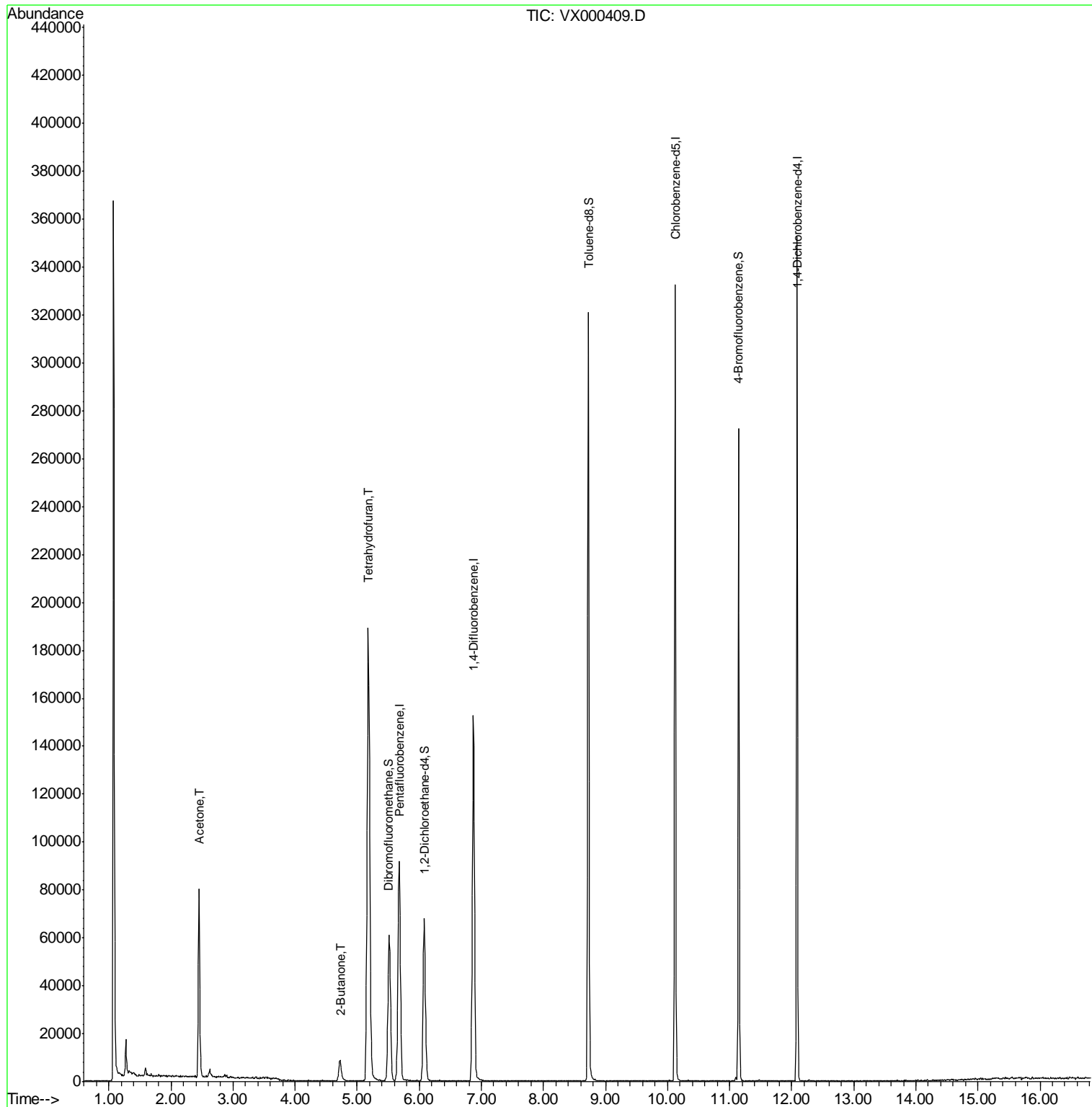
Internal Standards	R.T.	QIon	Response	Conc	Units	Dev(Min)
1) Pentafluorobenzene	5.68	168	87250	50.00	ug/l	0.00
34) 1,4-Difluorobenzene	6.87	114	150831	50.00	ug/l	0.00
63) Chlorobenzene-d5	10.12	117	141747	50.00	ug/l	0.00
72) 1,4-Dichlorobenzene-d4	12.09	152	65872	50.00	ug/l	0.00
System Monitoring Compounds						
33) 1,2-Dichloroethane-d4	6.08	65	61222	53.75	ug/l	0.00
Spiked Amount	50.000		Recovery	=	107.50%	
35) Dibromofluoromethane	5.51	113	48755	51.30	ug/l	0.00
Spiked Amount	50.000		Recovery	=	102.60%	
50) Toluene-d8	8.73	98	185559	47.14	ug/l	0.00
Spiked Amount	50.000		Recovery	=	94.28%	
62) 4-Bromofluorobenzene	11.15	95	60647	38.14	ug/l	0.00
Spiked Amount	50.000		Recovery	=	76.28%	
Target Compounds						
16) Acetone	2.45	43	83932	88.59	ug/l	95
25) 2-Butanone	4.72	43	15452	14.51	ug/l	98
29) Tetrahydrofuran	5.18	42	165374	252.40	ug/l	98

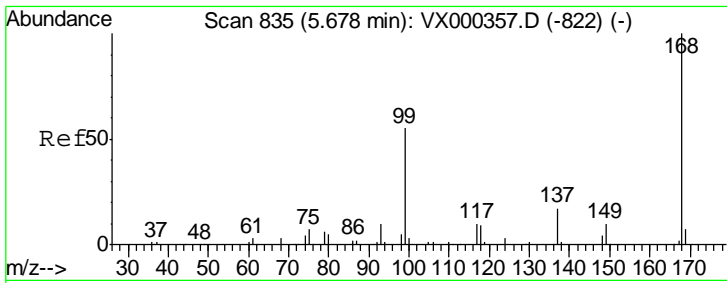
(#) = qualifier out of range (m) = manual integration (+) = signals summed

Data Path : W:\HPCHEM1\MSVOA X\DATA\VX032218\  
 Data File : VX000409.D  
 Acq On : 22 Mar 2018 16:29  
 Operator : JC/MD  
 Sample : J2005-04  
 Misc : 5.0mL/MSVOA X/WATER  
 ALS Vial : 13 Sample Multiplier: 1

Instrument :  
 MSVOA\_X  
 Client Sampled :  
 CARBON-2-031918

Quant Time: Mar 23 06:14:37 2018  
 Quant Method : W:\HPCHEM1\MSVOA\_X\METHOD\82X032018W.M  
 Quant Title : SW846 8260  
 QLast Update : Wed Mar 21 04:52:42 2018  
 Response via : Initial Calibration

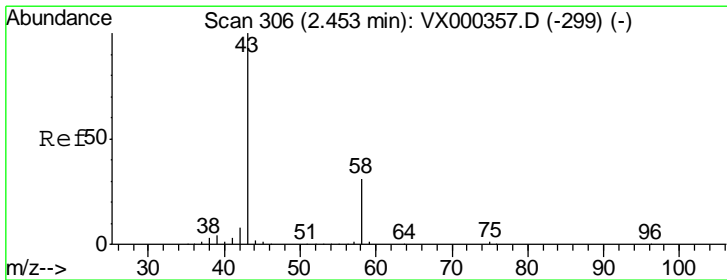
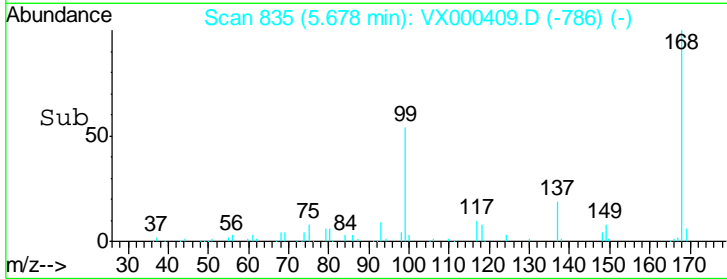
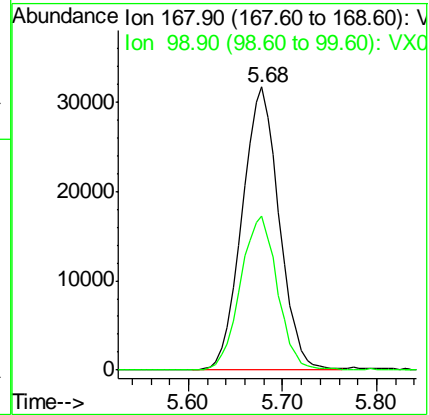
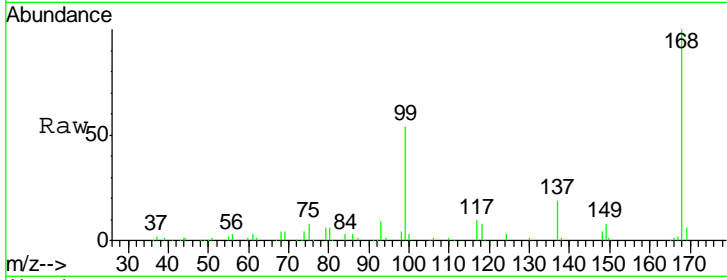




#1  
 Pentafluorobenzene  
 Concen: 50.00 ug/l  
 RT: 5.68 min Scan# 835  
 Delta R.T. -0.00 min  
 Lab File: VX000409.D  
 Acq: 22 Mar 2018 16:29

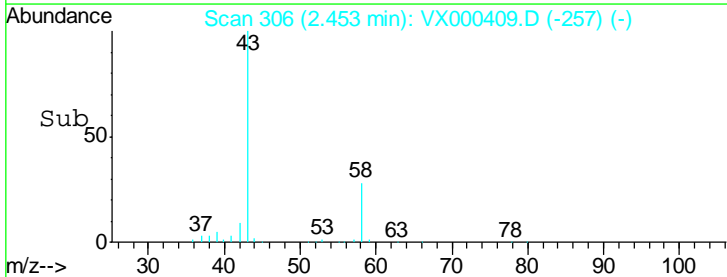
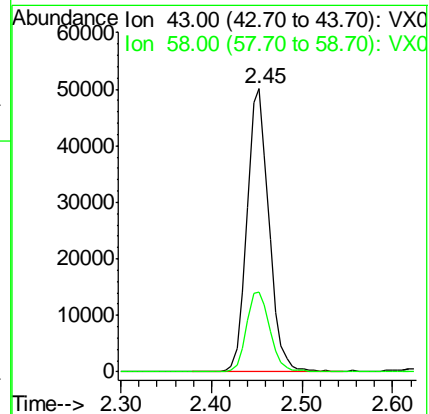
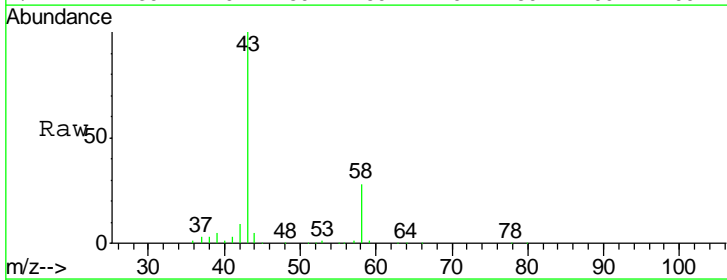
Instrument :  
 MSVOA\_X  
 ClientSampled :  
 CARBON-2-031918

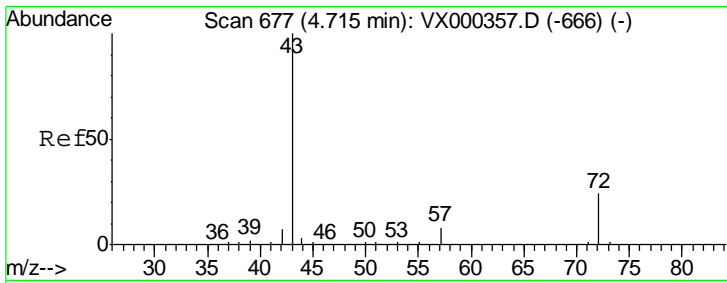
Tgt Ion: 168 Resp: 87250  
 Ion Ratio Lower Upper  
 168 100  
 99 54.5 45.8 68.6



#16  
 Acetone  
 Concen: 88.59 ug/l  
 RT: 2.45 min Scan# 306  
 Delta R.T. -0.00 min  
 Lab File: VX000409.D  
 Acq: 22 Mar 2018 16:29

Tgt Ion: 43 Resp: 83932  
 Ion Ratio Lower Upper  
 43 100  
 58 28.1 24.7 37.1

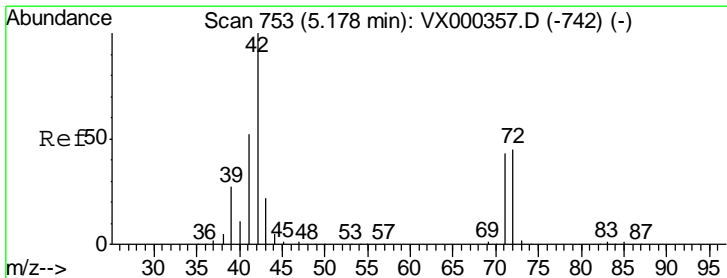
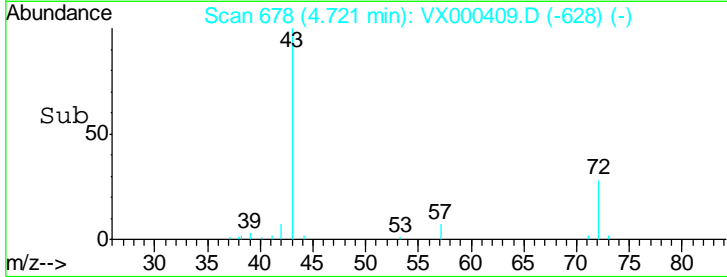
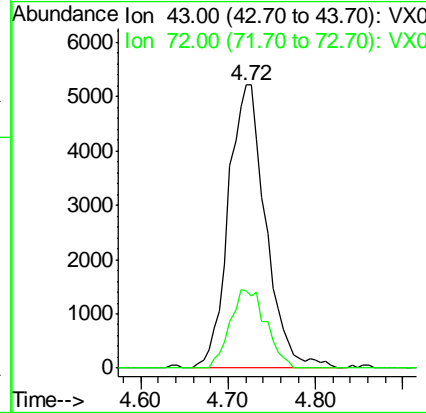
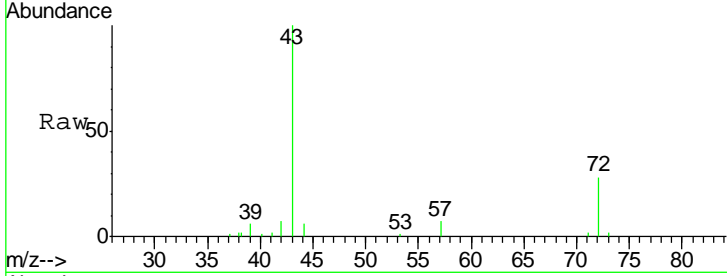




#25  
 2-Butanone  
 Concen: 14.51 ug/l  
 RT: 4.72 min Scan# 678  
 Delta R.T. 0.01 min  
 Lab File: VX000409.D  
 Acq: 22 Mar 2018 16:29

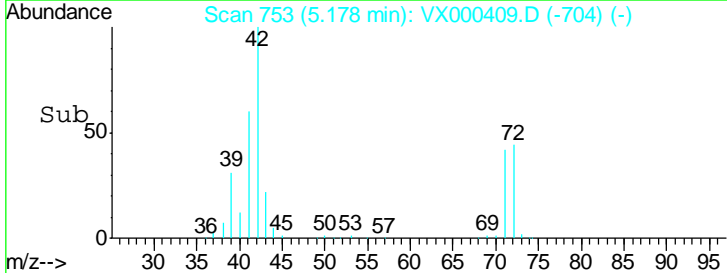
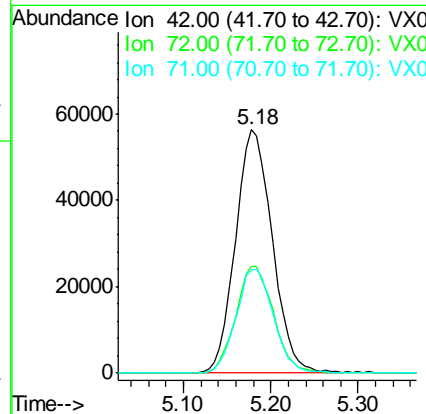
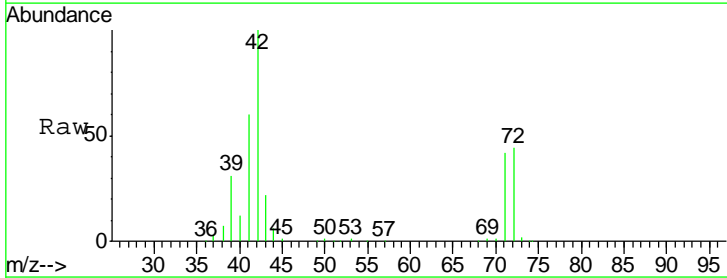
Instrument :  
 MSVOA\_X  
 ClientSampleId :  
 CARBON-2-031918

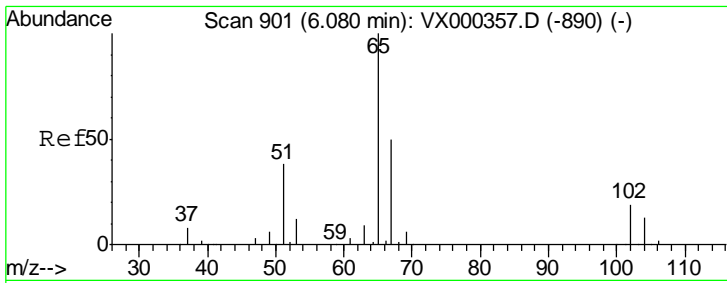
Tgt Ion	Resp	Lower	Upper
43	15452		
72	27.5	21.0	31.6



#29  
 Tetrahydrofuran  
 Concen: 252.40 ug/l  
 RT: 5.18 min Scan# 753  
 Delta R.T. -0.00 min  
 Lab File: VX000409.D  
 Acq: 22 Mar 2018 16:29

Tgt Ion	Resp	Lower	Upper
42	165374		
72	44.7	37.9	56.9
71	43.3	34.4	51.6

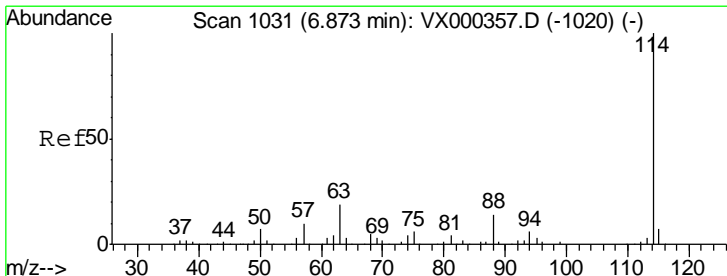
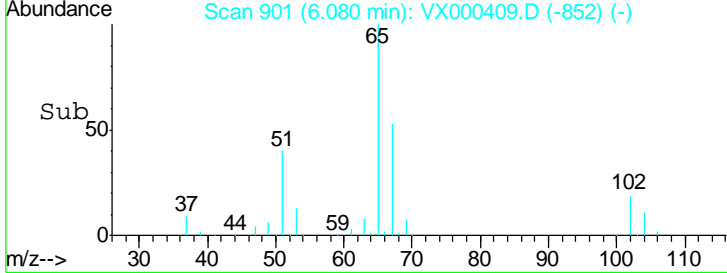
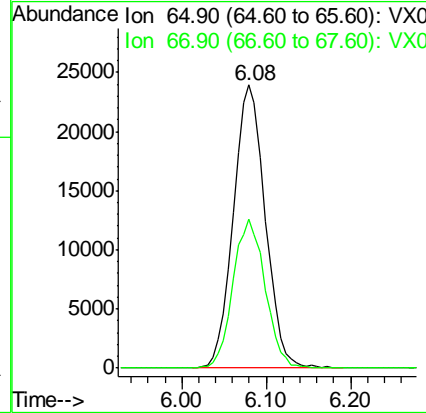
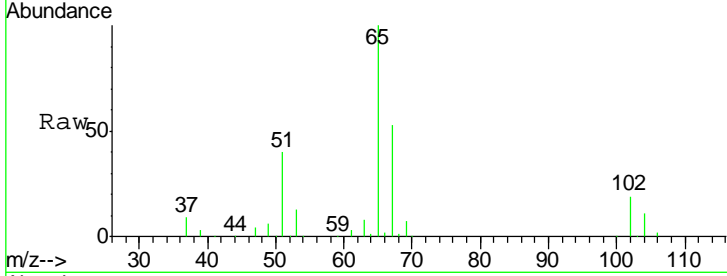




#33  
 1,2-Dichloroethane-d4  
 Concen: 53.75 ug/l  
 RT: 6.08 min Scan# 901  
 Delta R.T. 0.00 min  
 Lab File: VX000409.D  
 Acq: 22 Mar 2018 16:29

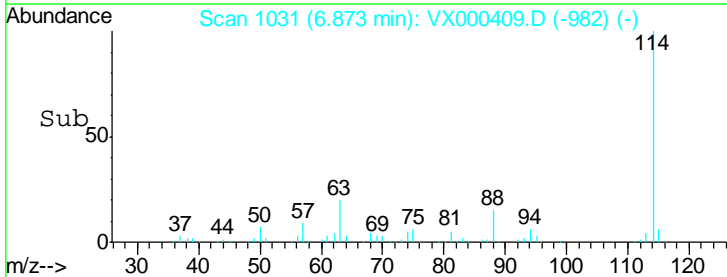
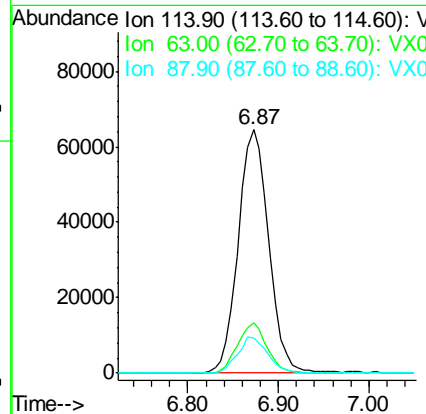
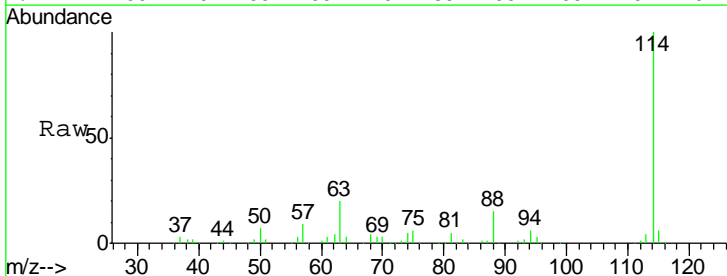
Instrument :  
 MSVOA\_X  
 ClientSampled :  
 CARBON-2-031918

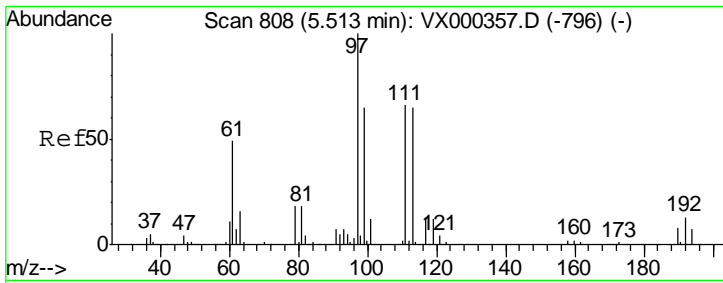
Tgt Ion	Resp	Lower	Upper
65	61222		
67	53.2	0.0	103.2



#34  
 1,4-Difluorobenzene  
 Concen: 50.00 ug/l  
 RT: 6.87 min Scan# 1031  
 Delta R.T. -0.00 min  
 Lab File: VX000409.D  
 Acq: 22 Mar 2018 16:29

Tgt Ion	Resp	Lower	Upper
114	150831		
63	20.4	0.0	38.4
88	14.6	0.0	27.0

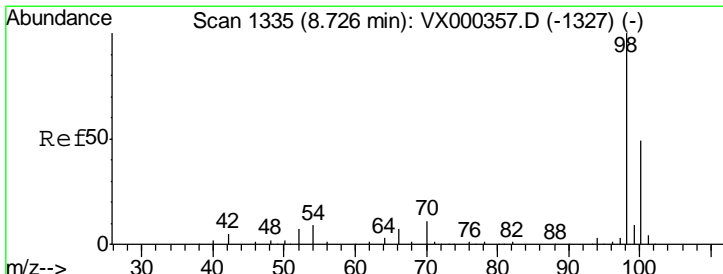
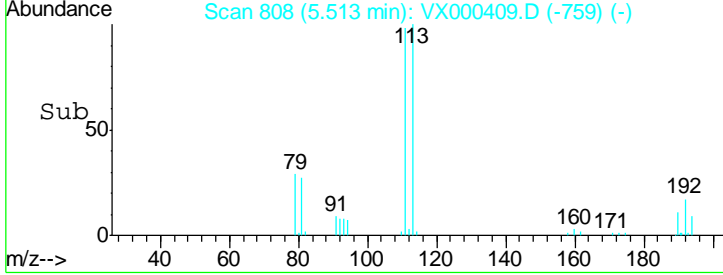
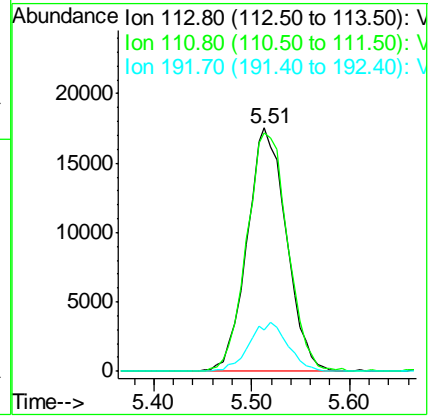
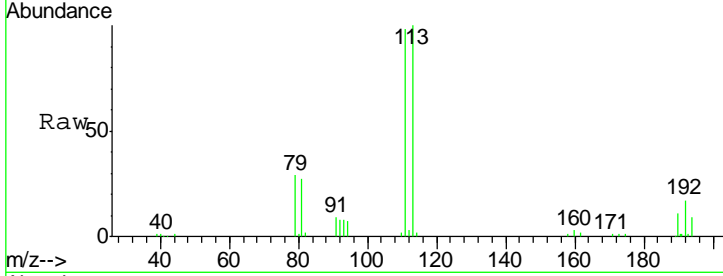




#35  
 Dibromofluoromethane  
 Concen: 51.30 ug/l  
 RT: 5.51 min Scan# 808  
 Delta R.T. -0.00 min  
 Lab File: VX000409.D  
 Acq: 22 Mar 2018 16:29

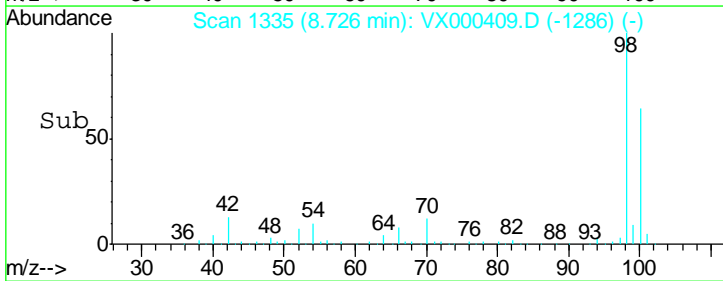
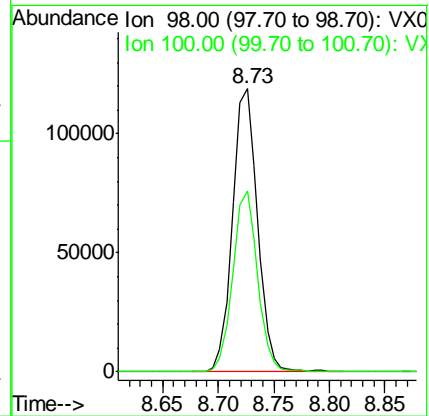
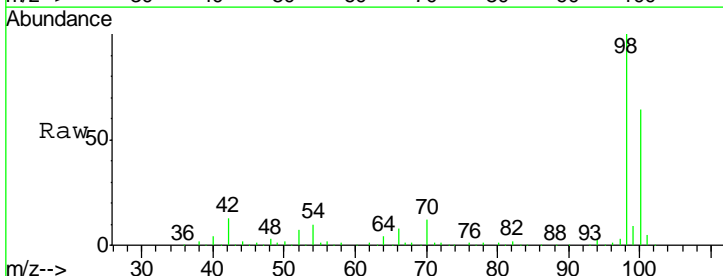
**Instrument :**  
 MSVOA\_X  
**ClientSampled :**  
 CARBON-2-031918

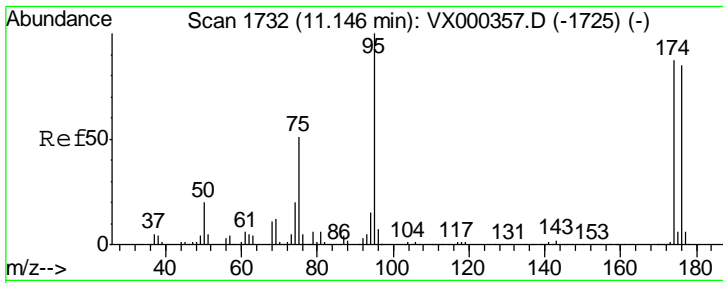
Tgt Ion	Resp	Lower	Upper
113	48755		
111	101.9	82.4	123.6
192	19.9	15.8	23.6



#50  
 Toluene-d8  
 Concen: 47.14 ug/l  
 RT: 8.73 min Scan# 1335  
 Delta R.T. -0.00 min  
 Lab File: VX000409.D  
 Acq: 22 Mar 2018 16:29

Tgt Ion	Resp	Lower	Upper
98	185559		
100	63.2	51.2	76.8

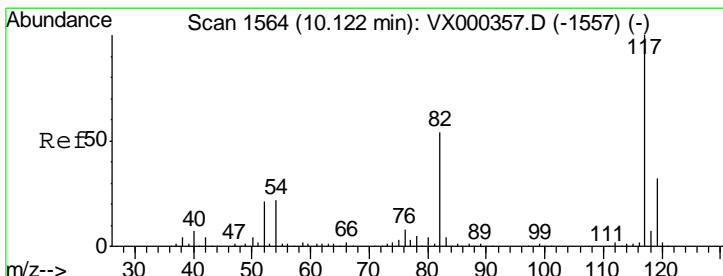
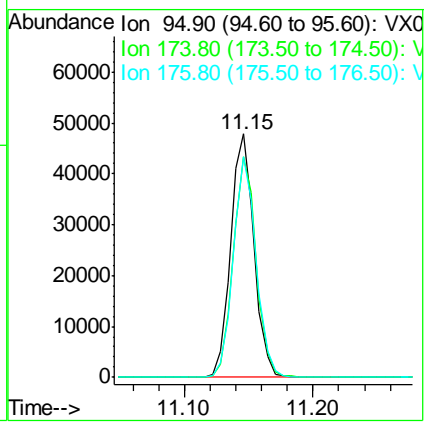
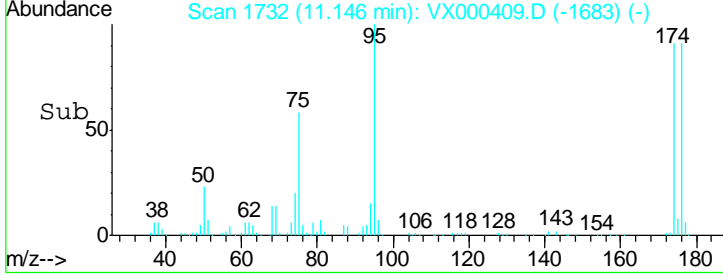
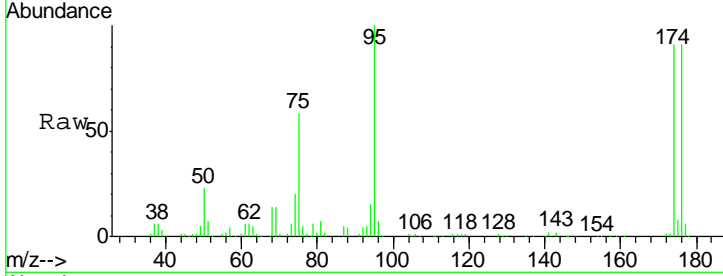




#62  
 4-Bromofluorobenzene  
 Concen: 38.14 ug/l  
 RT: 11.15 min Scan# 1732  
 Delta R.T. 0.00 min  
 Lab File: VX000409.D  
 Acq: 22 Mar 2018 16:29

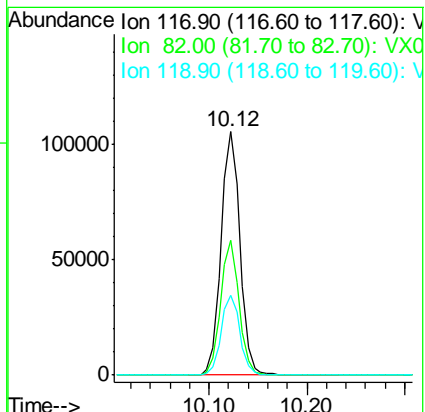
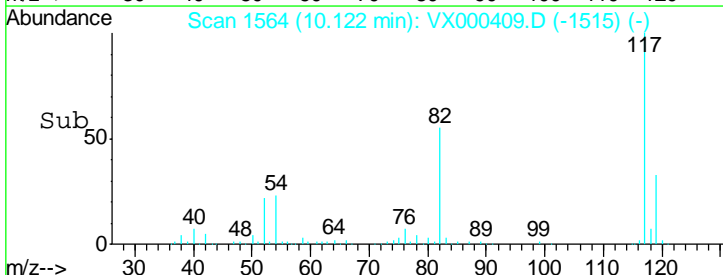
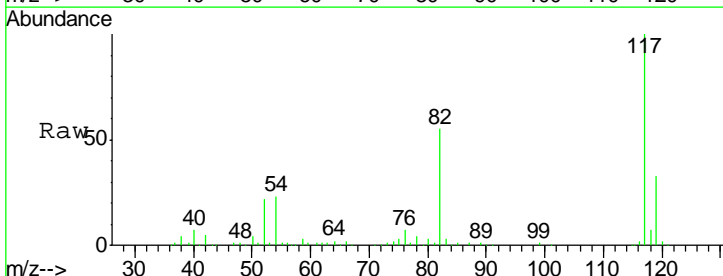
Instrument :  
 MSVOA\_X  
 ClientSampled :  
 CARBON-2-031918

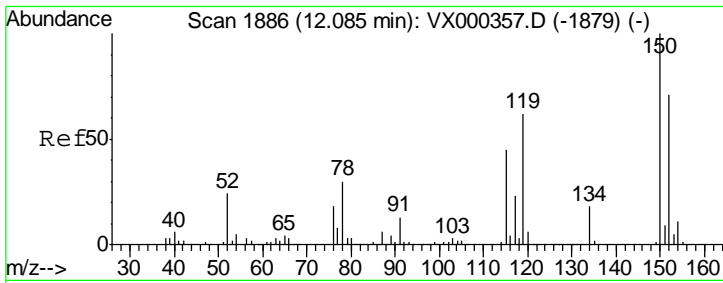
Tgt Ion	Resp	Lower	Upper
95	60647		
174	89.0	0.0	173.6
176	88.5	0.0	164.6



#63  
 Chlorobenzene-d5  
 Concen: 50.00 ug/l  
 RT: 10.12 min Scan# 1564  
 Delta R.T. -0.00 min  
 Lab File: VX000409.D  
 Acq: 22 Mar 2018 16:29

Tgt Ion	Resp	Lower	Upper
117	141747		
82	55.1	43.8	65.8
119	32.8	24.9	37.3





#72  
 1,4-Dichlorobenzene-d4  
 Concen: 50.00 ug/l  
 RT: 12.09 min Scan# 1886  
 Delta R.T. -0.00 min  
 Lab File: VX000409.D  
 Acq: 22 Mar 2018 16:29

Instrument :  
 MSVOA\_X  
 ClientSampled :  
 CARBON-2-031918

Tot Ion	Resp	Lower	Upper
152	100		
115	56.9	39.8	119.3
150	157.8	0.0	344.4

