

Data Path : W:\HPCHEM1\MSVOA X\DATA\VX032218\
 Data File : VX000415.D
 Acq On : 22 Mar 2018 19:02
 Operator : JC/MD
 Sample : J2005-10
 Misc : 5.0mL/MSVOA X/WATER
 ALS Vial : 19 Sample Multiplier: 1

Instrument :
 MSVOA_X
 ClientSampleId :
 MW-8D-031918

Quant Time: Mar 23 07:00:22 2018
 Quant Method : W:\HPCHEM1\MSVOA_X\METHOD\82X032018W.M
 Quant Title : SW846 8260
 QLast Update : Wed Mar 21 04:52:42 2018
 Response via : Initial Calibration

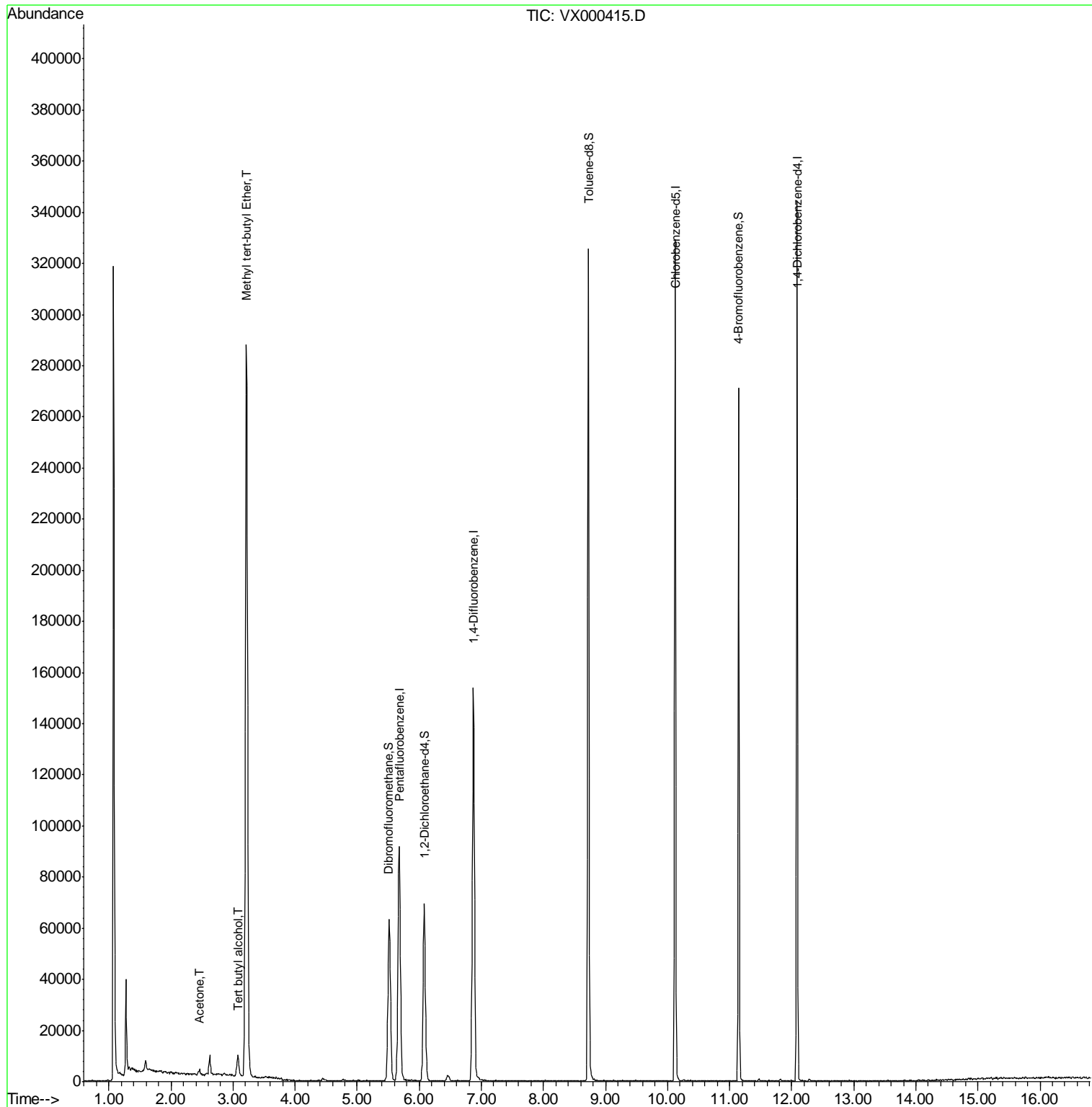
Internal Standards	R.T.	QIon	Response	Conc	Units	Dev(Min)
1) Pentafluorobenzene	5.68	168	88606	50.00	ug/l	0.00
34) 1,4-Difluorobenzene	6.87	114	150062	50.00	ug/l	0.00
63) Chlorobenzene-d5	10.12	117	140639	50.00	ug/l	0.00
72) 1,4-Dichlorobenzene-d4	12.09	152	64558	50.00	ug/l	0.00
System Monitoring Compounds						
33) 1,2-Dichloroethane-d4	6.08	65	62921	54.40	ug/l	0.00
Spiked Amount	50.000		Recovery	=	108.80%	
35) Dibromofluoromethane	5.51	113	49009	51.83	ug/l	0.00
Spiked Amount	50.000		Recovery	=	103.66%	
50) Toluene-d8	8.73	98	185335	47.33	ug/l	0.00
Spiked Amount	50.000		Recovery	=	94.66%	
62) 4-Bromofluorobenzene	11.15	95	58020	36.91	ug/l	0.00
Spiked Amount	50.000		Recovery	=	73.82%	
Target Compounds						
11) Tert butyl alcohol	3.08	59	9345	23.49	ug/l	# 72
16) Acetone	2.45	43	2126	2.21	ug/l	100
19) Methyl tert-butyl Ether	3.21	73	324850	91.46	ug/l	98

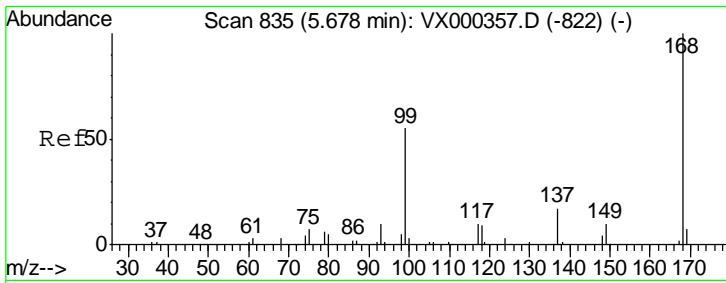
(#) = qualifier out of range (m) = manual integration (+) = signals summed

Data Path : W:\HPCHEM1\MSVOA X\DATA\VX032218\
 Data File : VX000415.D
 Acq On : 22 Mar 2018 19:02
 Operator : JC/MD
 Sample : J2005-10
 Misc : 5.0mL/MSVOA X/WATER
 ALS Vial : 19 Sample Multiplier: 1

Instrument :
 MSVOA_X
 Client Sampled :
 MW-8D-031918

Quant Time: Mar 23 07:00:22 2018
 Quant Method : W:\HPCHEM1\MSVOA_X\METHOD\82X032018W.M
 Quant Title : SW846 8260
 QLast Update : Wed Mar 21 04:52:42 2018
 Response via : Initial Calibration

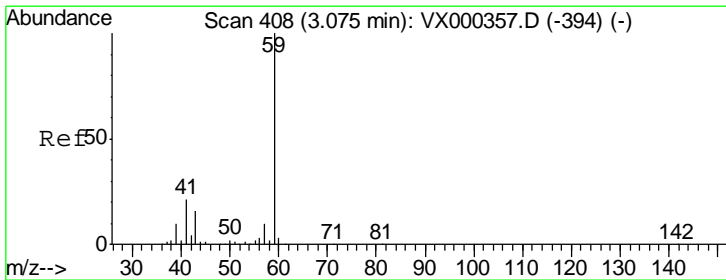
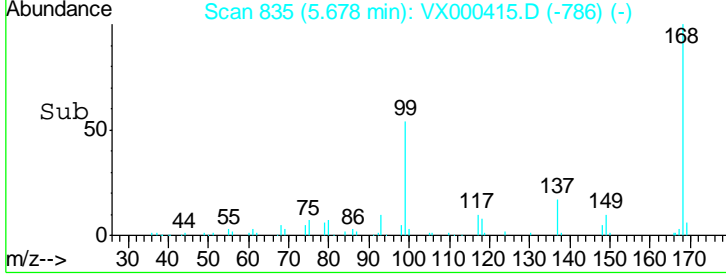
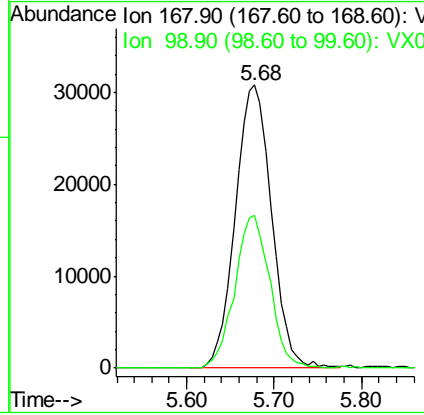
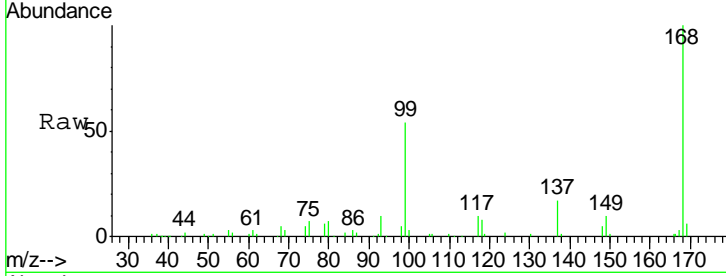




#1
 Pentafluorobenzene
 Concen: 50.00 ug/l
 RT: 5.68 min Scan# 835
 Delta R.T. -0.00 min
 Lab File: VX000415.D
 Acq: 22 Mar 2018 19:02

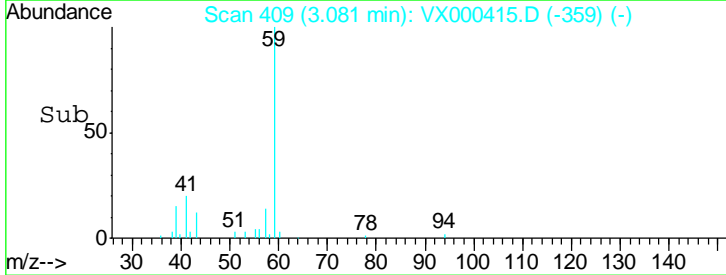
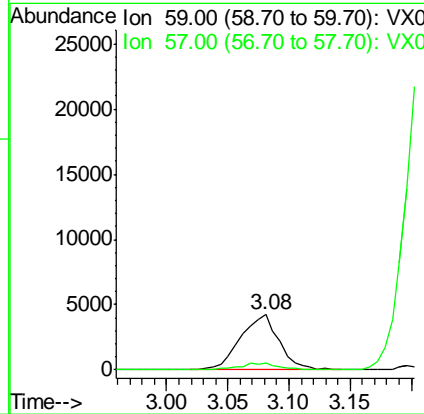
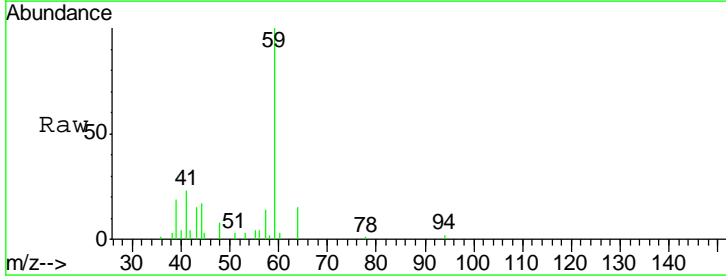
Instrument :
 MSVOA_X
ClientSampled :
 MW-8D-031918

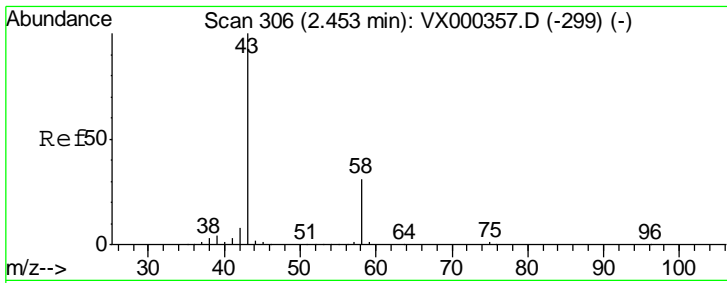
Tgt Ion	Resp	Lower	Upper
168	100		
99	54.1	45.8	68.6



#11
 Tert butyl alcohol
 Concen: 23.49 ug/l
 RT: 3.08 min Scan# 409
 Delta R.T. 0.01 min
 Lab File: VX000415.D
 Acq: 22 Mar 2018 19:02

Tgt Ion	Resp	Lower	Upper
59	100		
57	0.0	8.4	12.6#

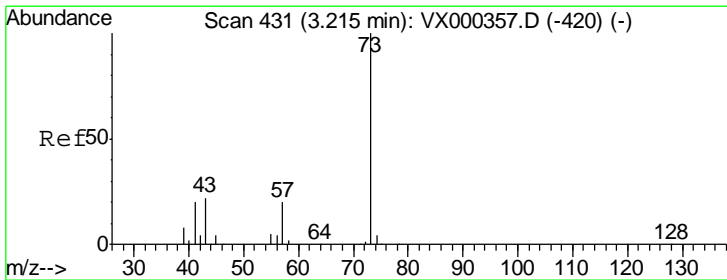
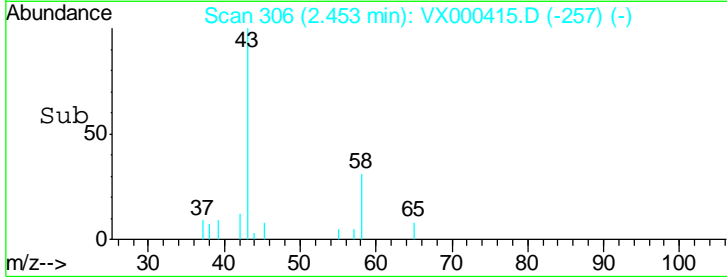
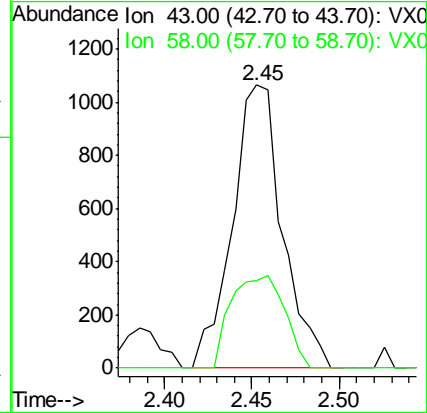
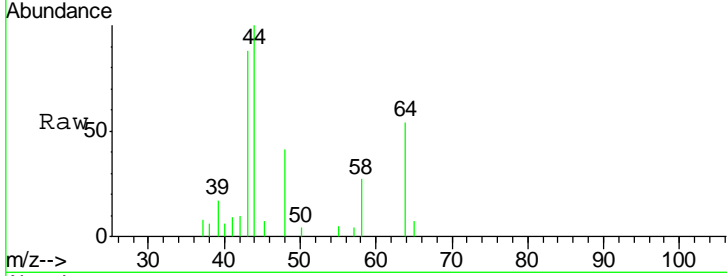




#16
 Acetone
 Concen: 2.21 ug/l
 RT: 2.45 min Scan# 306
 Delta R.T. -0.00 min
 Lab File: VX000415.D
 Acq: 22 Mar 2018 19:02

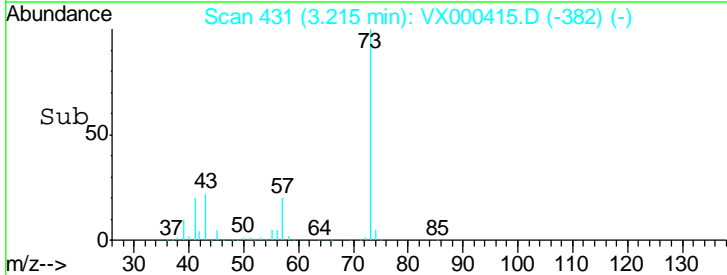
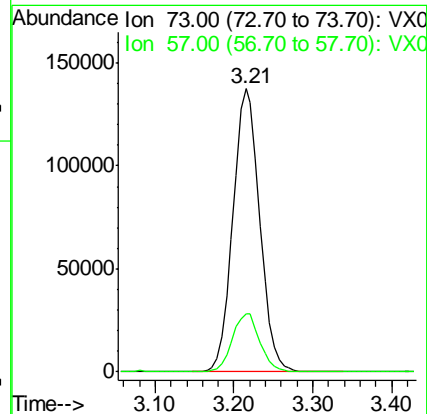
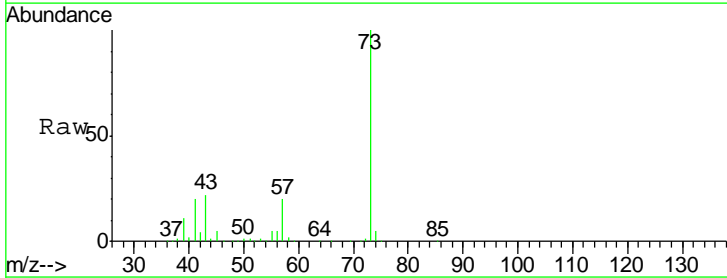
Instrument :
 MSVOA_X
 ClientSampled :
 MW-8D-031918

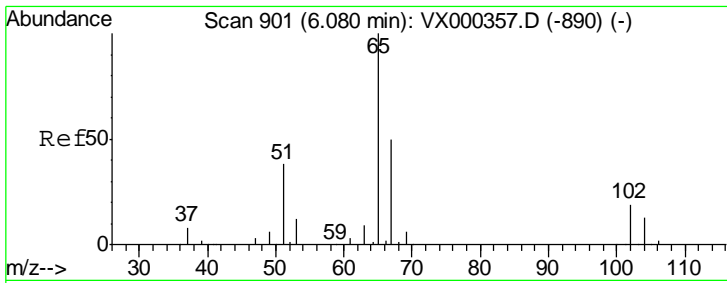
Tgt Ion: 43 Resp: 2126
 Ion Ratio Lower Upper
 43 100
 58 31.1 24.7 37.1



#19
 Methyl tert-butyl Ether
 Concen: 91.46 ug/l
 RT: 3.21 min Scan# 431
 Delta R.T. -0.00 min
 Lab File: VX000415.D
 Acq: 22 Mar 2018 19:02

Tgt Ion: 73 Resp: 324850
 Ion Ratio Lower Upper
 73 100
 57 20.4 17.2 25.8

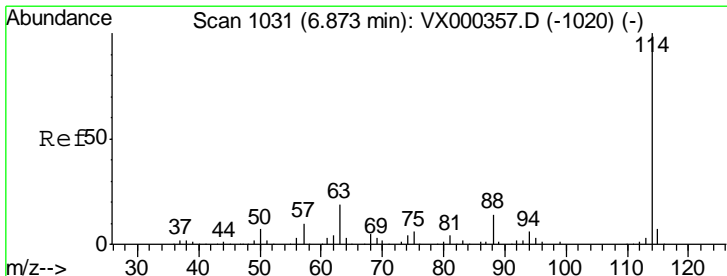
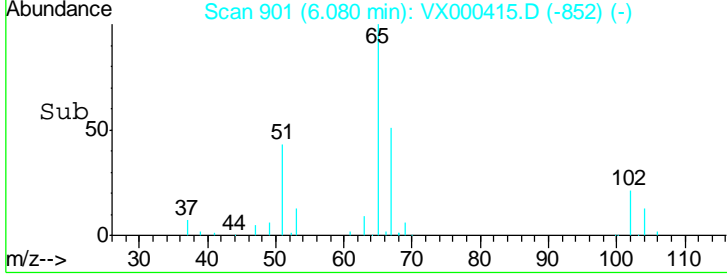
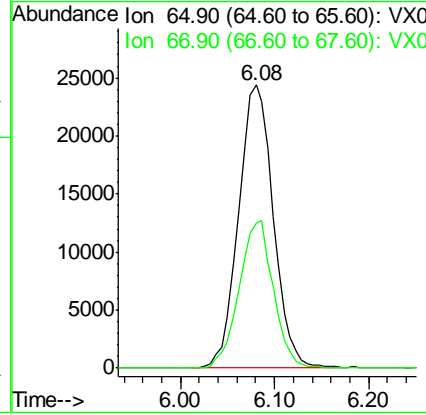
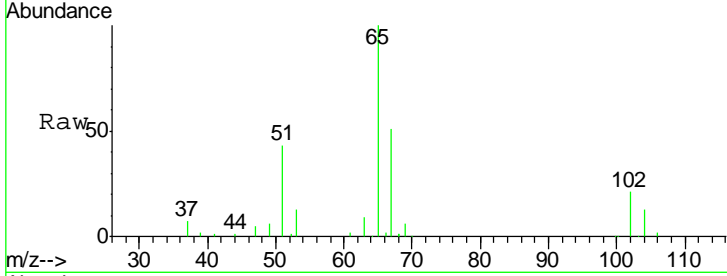




#33
 1,2-Dichloroethane-d4
 Concen: 54.40 ug/l
 RT: 6.08 min Scan# 901
 Delta R.T. 0.00 min
 Lab File: VX000415.D
 Acq: 22 Mar 2018 19:02

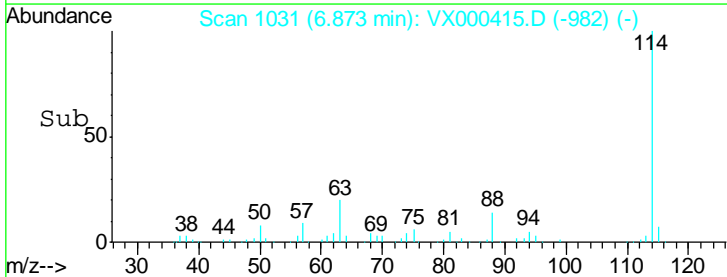
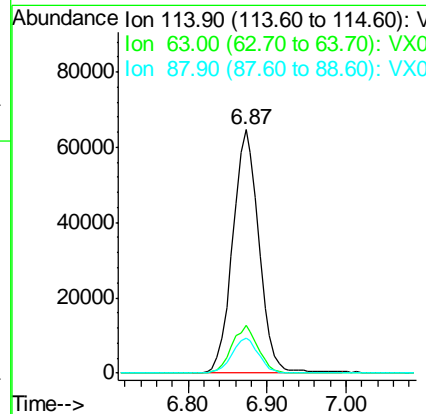
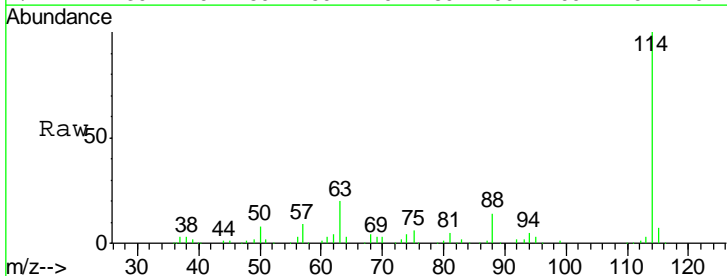
Instrument :
 MSVOA_X
ClientSampled :
 MW-8D-031918

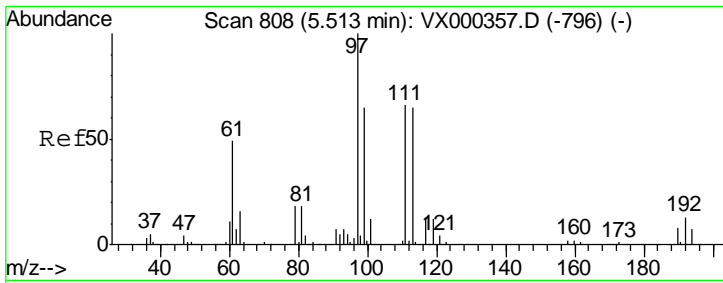
Tgt Ion	Resp	Lower	Upper
65	100		
67	51.3	0.0	103.2



#34
 1,4-Difluorobenzene
 Concen: 50.00 ug/l
 RT: 6.87 min Scan# 1031
 Delta R.T. -0.00 min
 Lab File: VX000415.D
 Acq: 22 Mar 2018 19:02

Tgt Ion	Resp	Lower	Upper
114	100		
63	19.9	0.0	38.4
88	14.4	0.0	27.0

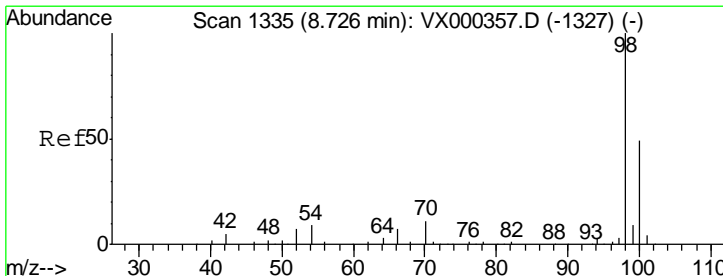
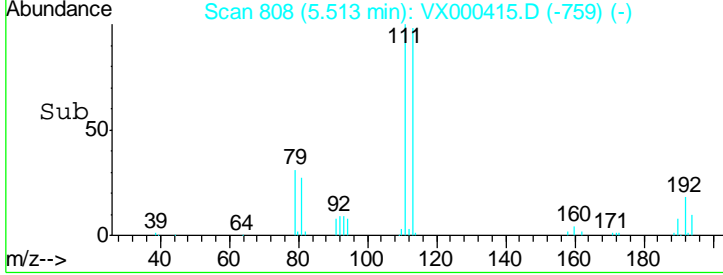
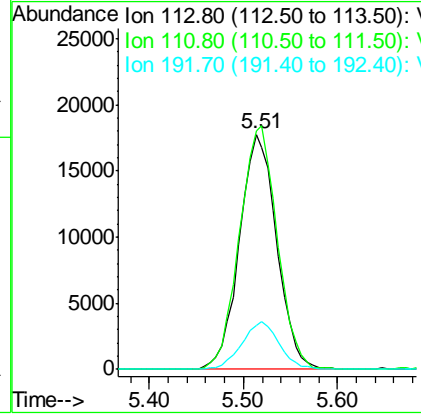
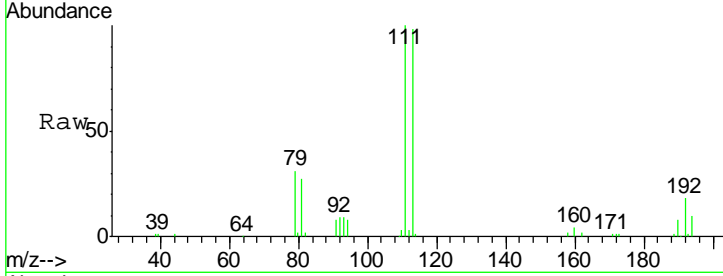




#35
 Dibromofluoromethane
 Concen: 51.83 ug/l
 RT: 5.51 min Scan# 808
 Delta R.T. -0.00 min
 Lab File: VX000415.D
 Acq: 22 Mar 2018 19:02

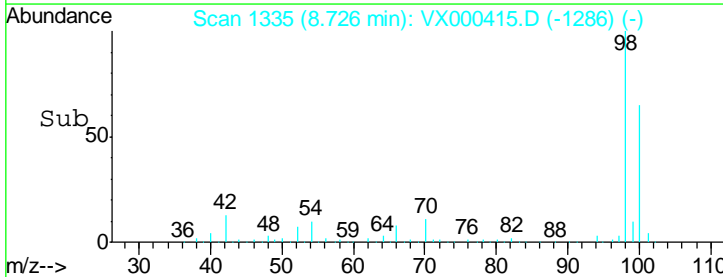
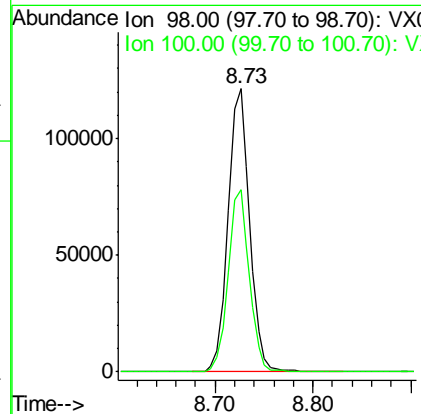
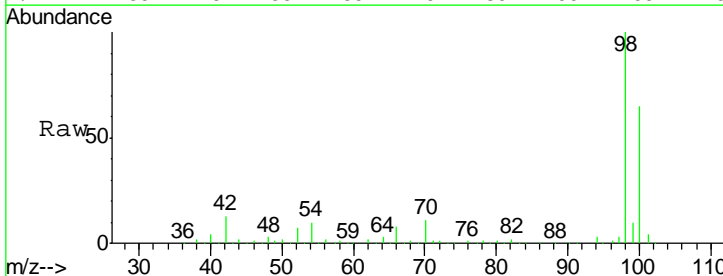
Instrument :
 MSVOA_X
ClientSampleId :
 MW-8D-031918

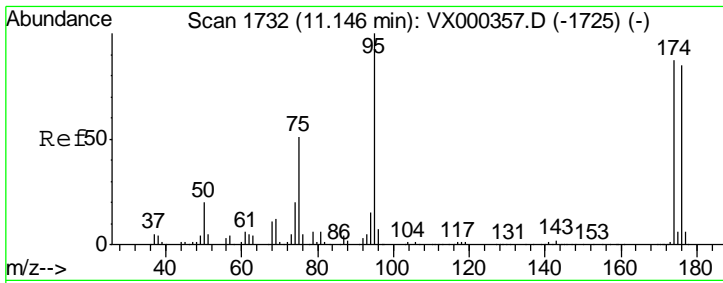
Tgt Ion	Resp	Lower	Upper
113	49009		
111	105.2	82.4	123.6
192	20.4	15.8	23.6



#50
 Toluene-d8
 Concen: 47.33 ug/l
 RT: 8.73 min Scan# 1335
 Delta R.T. -0.00 min
 Lab File: VX000415.D
 Acq: 22 Mar 2018 19:02

Tgt Ion	Resp	Lower	Upper
98	185335		
100	63.6	51.2	76.8

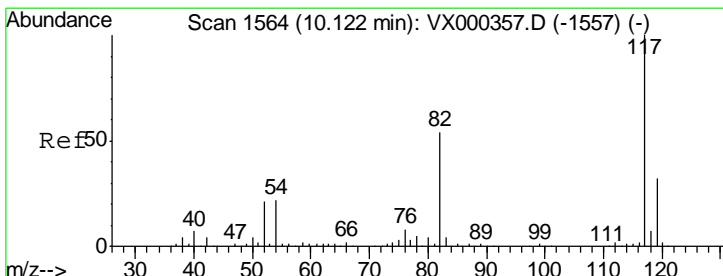
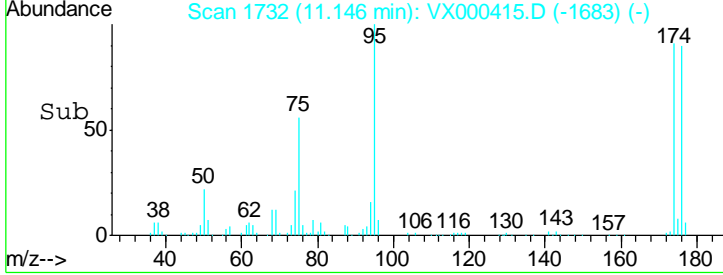
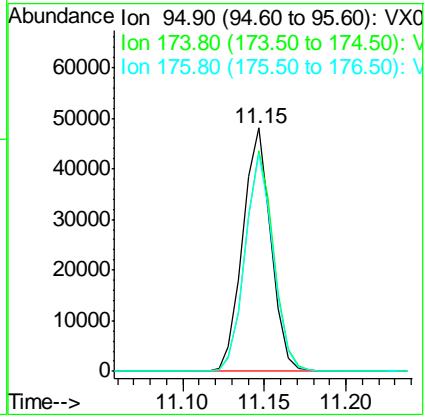
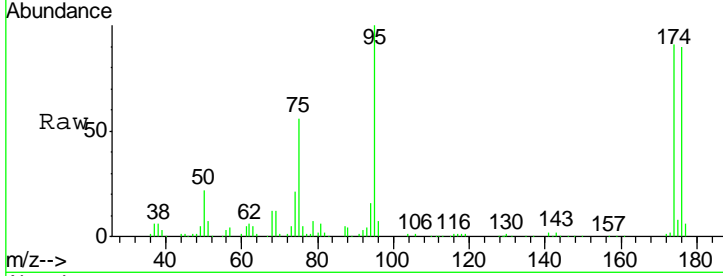




#62
 4-Bromofluorobenzene
 Concen: 36.91 ug/l
 RT: 11.15 min Scan# 1732
 Delta R.T. 0.00 min
 Lab File: VX000415.D
 Acq: 22 Mar 2018 19:02

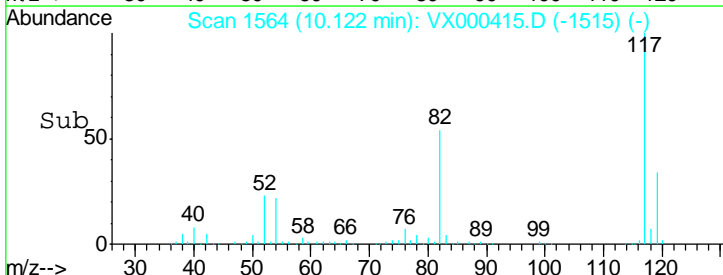
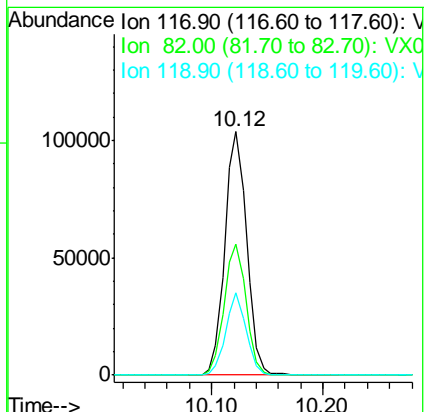
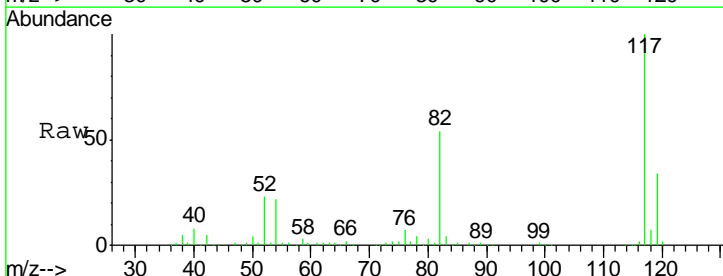
Instrument : MSVOA_X
 ClientSampled : MW-8D-031918

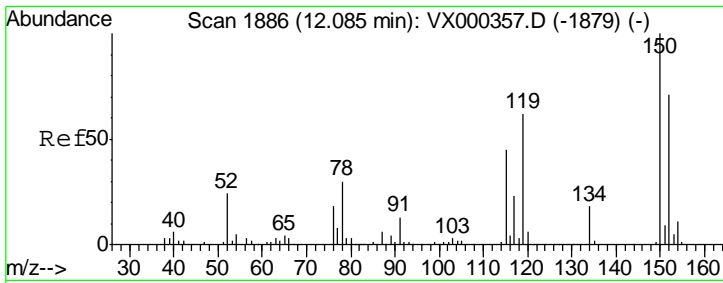
Tgt Ion	Resp	Lower	Upper
95	58020		
174	91.4	0.0	173.6
176	89.4	0.0	164.6



#63
 Chlorobenzene-d5
 Concen: 50.00 ug/l
 RT: 10.12 min Scan# 1564
 Delta R.T. -0.00 min
 Lab File: VX000415.D
 Acq: 22 Mar 2018 19:02

Tgt Ion	Resp	Lower	Upper
117	140639		
82	53.6	43.8	65.8
119	33.6	24.9	37.3





#72
 1,4-Dichlorobenzene-d4
 Concen: 50.00 ug/l
 RT: 12.09 min Scan# 1886
 Delta R.T. -0.00 min
 Lab File: VX000415.D
 Acq: 22 Mar 2018 19:02

Instrument :
 MSVOA_X
ClientSampled :
 MW-8D-031918

Tot Ion	Resp	Lower	Upper
152	100		
115	55.9	39.8	119.3
150	153.8	0.0	344.4

