

Data Path : W:\HPCHEM1\MSVOA X\DATA\VX032218\
 Data File : VX000417.D
 Acq On : 22 Mar 2018 19:53
 Operator : JC/MD
 Sample : J2005-12
 Misc : 5.0mL/MSVOA X/WATER
 ALS Vial : 21 Sample Multiplier: 1

Instrument :
 MSVOA_X
 ClientSampleId :
 BR-3-031918

Quant Time: Mar 23 07:03:49 2018
 Quant Method : W:\HPCHEM1\MSVOA_X\METHOD\82X032018W.M
 Quant Title : SW846 8260
 QLast Update : Wed Mar 21 04:52:42 2018
 Response via : Initial Calibration

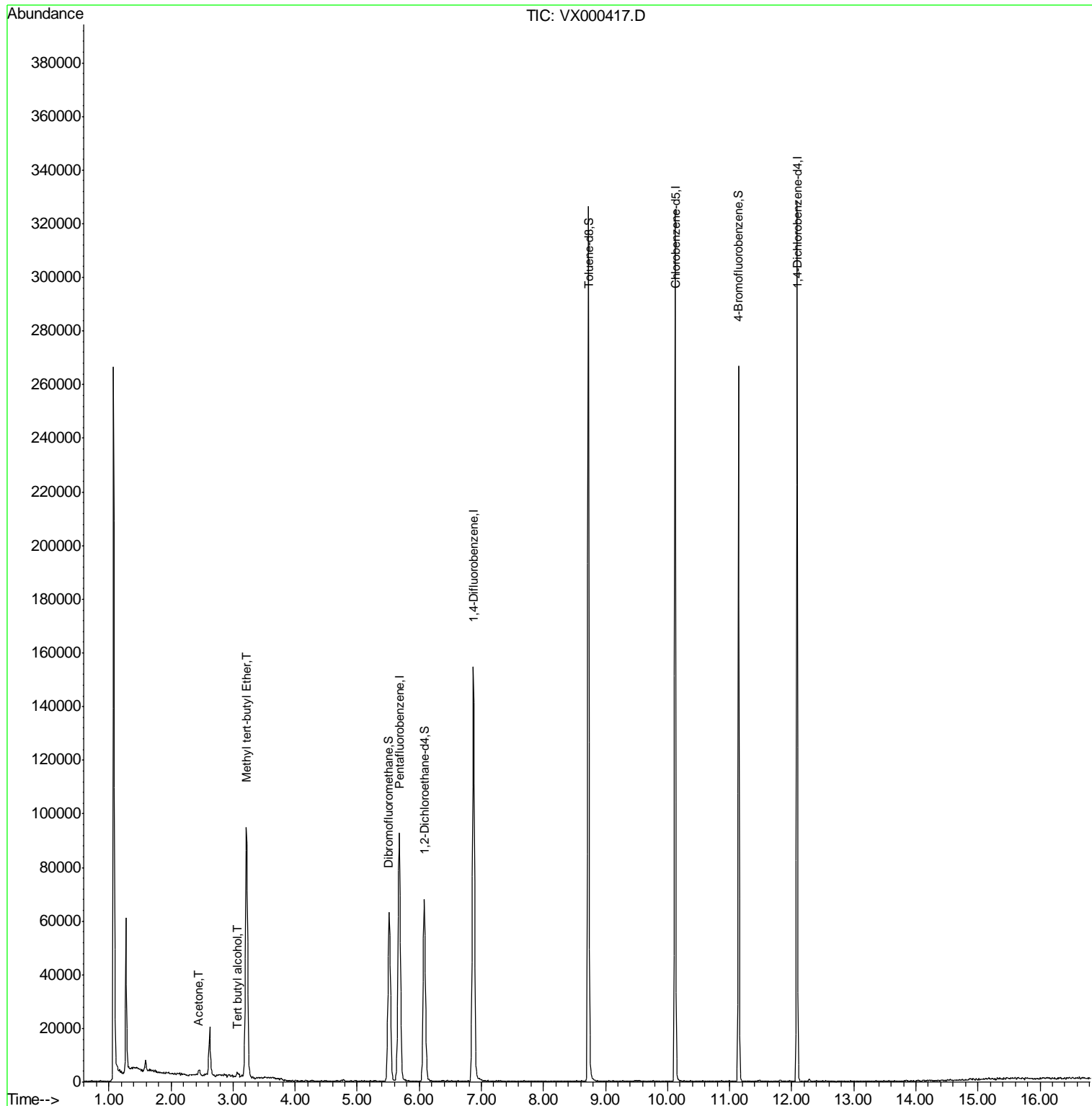
Internal Standards	R.T.	QIon	Response	Conc	Units	Dev(Min)
1) Pentafluorobenzene	5.68	168	87328	50.00	ug/l	0.00
34) 1,4-Difluorobenzene	6.87	114	151801	50.00	ug/l	0.00
63) Chlorobenzene-d5	10.12	117	138828	50.00	ug/l	0.00
72) 1,4-Dichlorobenzene-d4	12.09	152	61463	50.00	ug/l	0.00
System Monitoring Compounds						
33) 1,2-Dichloroethane-d4	6.08	65	63065	55.32	ug/l	0.00
Spiked Amount	50.000		Recovery	=	110.64%	
35) Dibromofluoromethane	5.51	113	49970	52.24	ug/l	0.00
Spiked Amount	50.000		Recovery	=	104.48%	
50) Toluene-d8	8.73	98	188125	47.49	ug/l	0.00
Spiked Amount	50.000		Recovery	=	94.98%	
62) 4-Bromofluorobenzene	11.15	95	56877	35.96	ug/l	0.00
Spiked Amount	50.000		Recovery	=	71.92%	
Target Compounds						
11) Tert butyl alcohol	3.07	59	1831	4.67	ug/l #	72
16) Acetone	2.45	43	2199	2.32	ug/l #	77
19) Methyl tert-butyl Ether	3.21	73	106649	30.46	ug/l	95

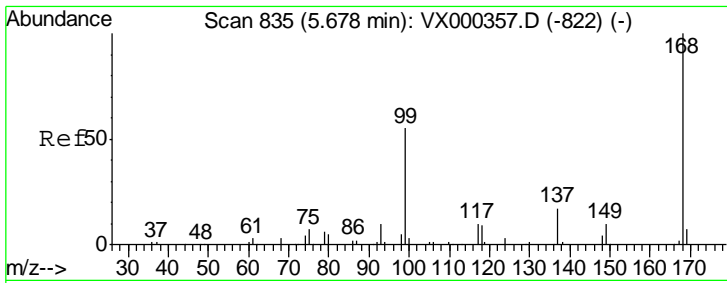
(#) = qualifier out of range (m) = manual integration (+) = signals summed

Data Path : W:\HPCHEM1\MSVOA X\DATA\VX032218\
 Data File : VX000417.D
 Acq On : 22 Mar 2018 19:53
 Operator : JC/MD
 Sample : J2005-12
 Misc : 5.0mL/MSVOA X/WATER
 ALS Vial : 21 Sample Multiplier: 1

Instrument :
 MSVOA_X
 Client Sampled :
 BR-3-031918

Quant Time: Mar 23 07:03:49 2018
 Quant Method : W:\HPCHEM1\MSVOA_X\METHOD\82X032018W.M
 Quant Title : SW846 8260
 QLast Update : Wed Mar 21 04:52:42 2018
 Response via : Initial Calibration

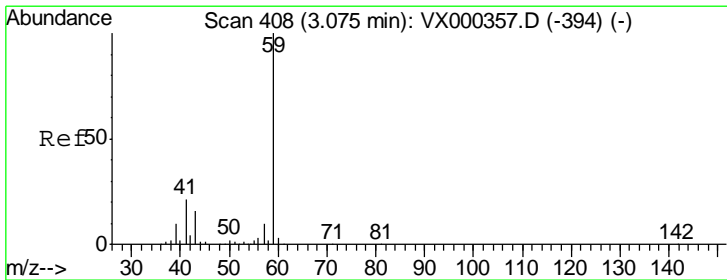
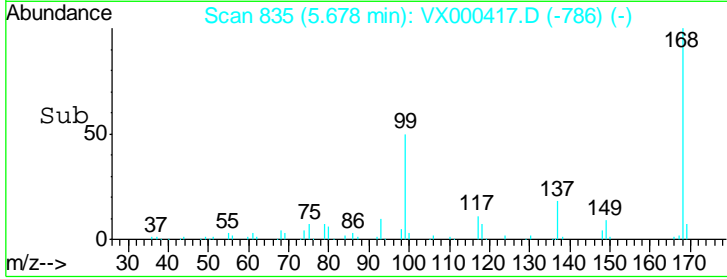
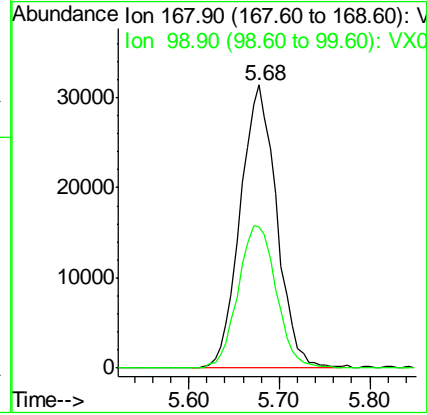
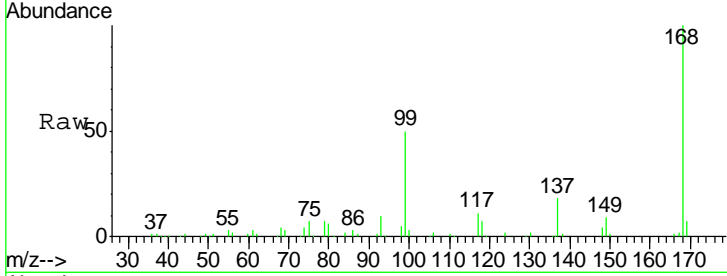




#1
 Pentafluorobenzene
 Concen: 50.00 ug/l
 RT: 5.68 min Scan# 835
 Delta R.T. -0.00 min
 Lab File: VX000417.D
 Acq: 22 Mar 2018 19:53

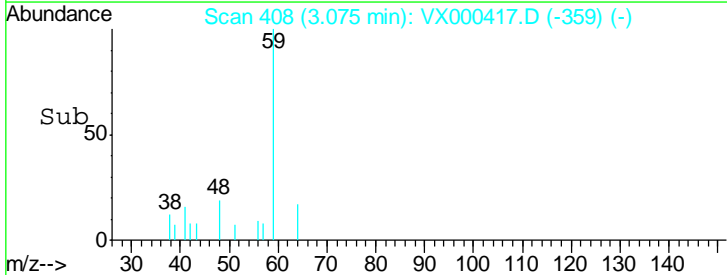
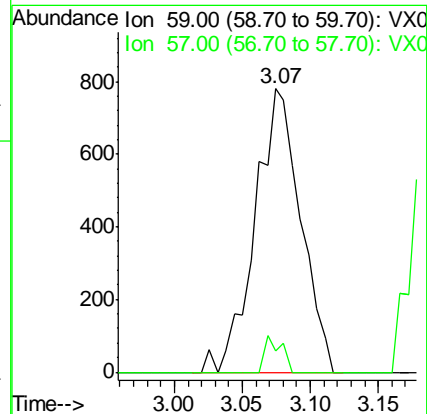
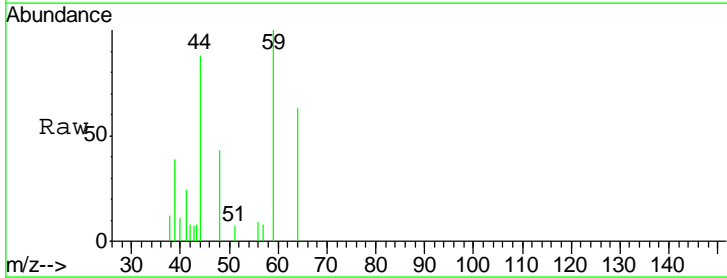
Instrument :
 MSVOA_X
 ClientSampled :
 BR-3-031918

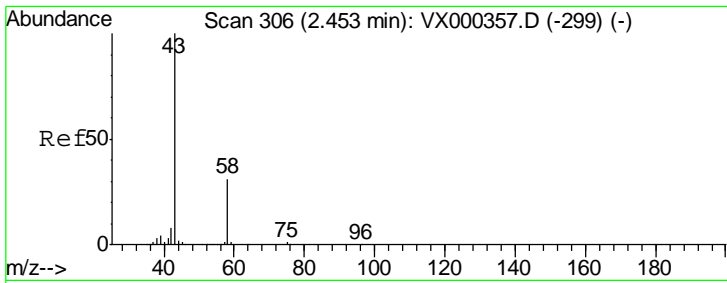
Tgt Ion: 168 Resp: 87328
 Ion Ratio Lower Upper
 168 100
 99 49.8 45.8 68.6



#11
 Tert butyl alcohol
 Concen: 4.67 ug/l
 RT: 3.07 min Scan# 408
 Delta R.T. -0.00 min
 Lab File: VX000417.D
 Acq: 22 Mar 2018 19:53

Tgt Ion: 59 Resp: 1831
 Ion Ratio Lower Upper
 59 100
 57 0.0 8.4 12.6#

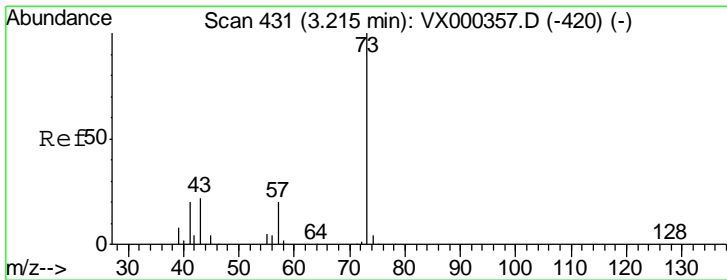
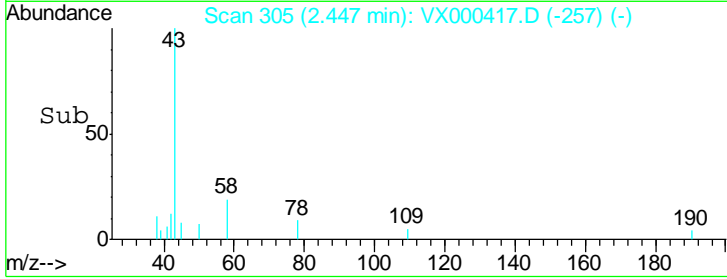
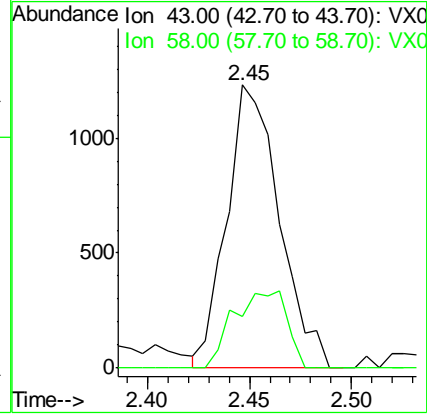
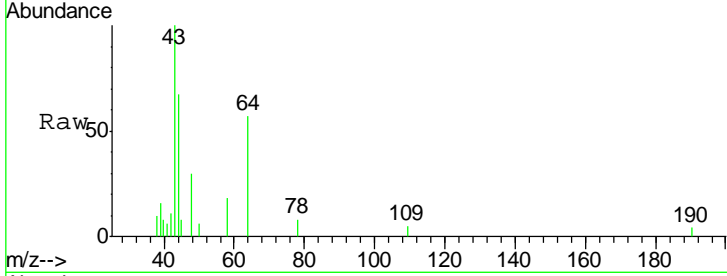




#16
 Acetone
 Concen: 2.32 ug/l
 RT: 2.45 min Scan# 305
 Delta R.T. -0.01 min
 Lab File: VX000417.D
 Acq: 22 Mar 2018 19:53

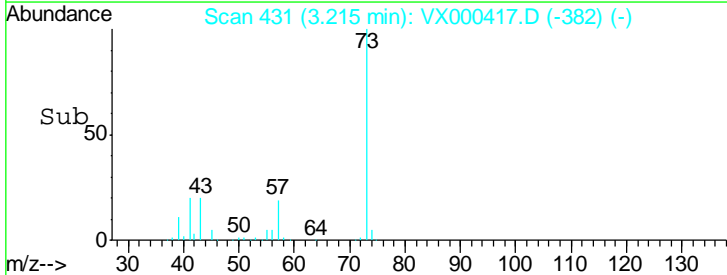
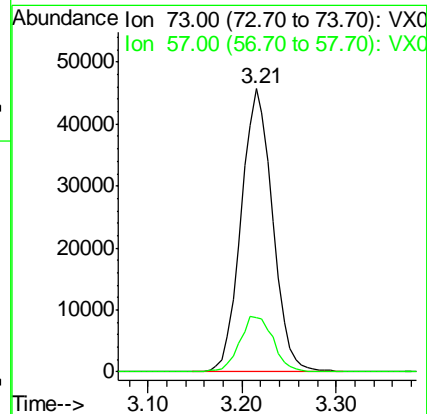
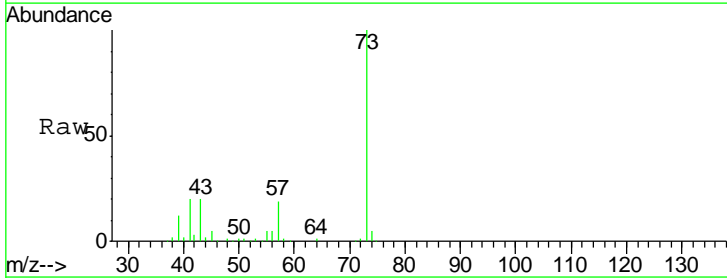
Instrument :
 MSVOA_X
 ClientSampleID :
 BR-3-031918

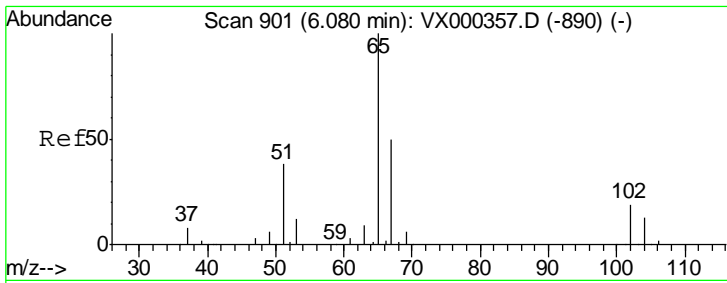
Tgt Ion: 43 Resp: 2199
 Ion Ratio Lower Upper
 43 100
 58 18.0 24.7 37.1#



#19
 Methyl tert-butyl Ether
 Concen: 30.46 ug/l
 RT: 3.21 min Scan# 431
 Delta R.T. -0.00 min
 Lab File: VX000417.D
 Acq: 22 Mar 2018 19:53

Tgt Ion: 73 Resp: 106649
 Ion Ratio Lower Upper
 73 100
 57 19.1 17.2 25.8

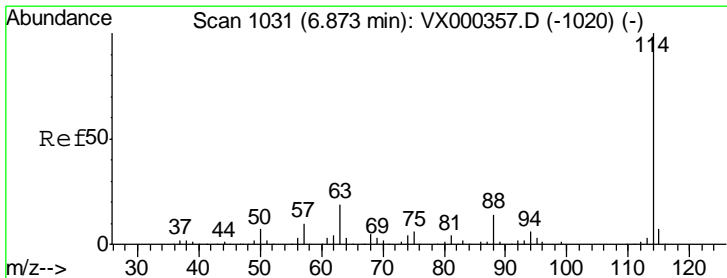
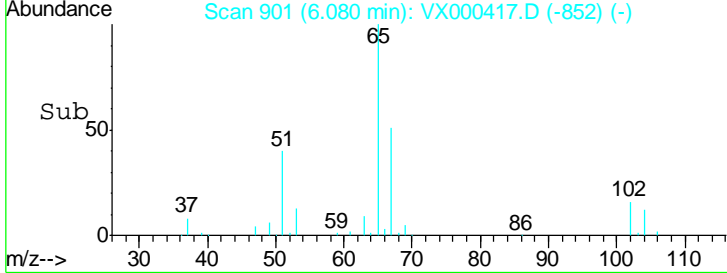
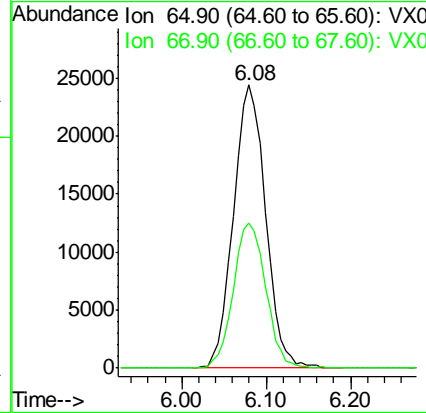
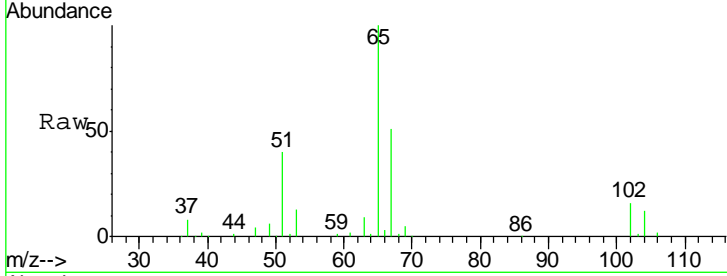




#33
 1,2-Dichloroethane-d4
 Concen: 55.32 ug/l
 RT: 6.08 min Scan# 901
 Delta R.T. 0.00 min
 Lab File: VX000417.D
 Acq: 22 Mar 2018 19:53

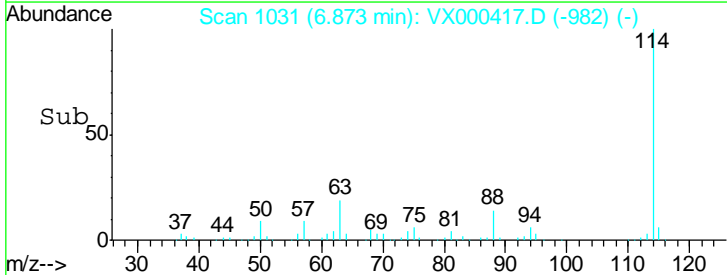
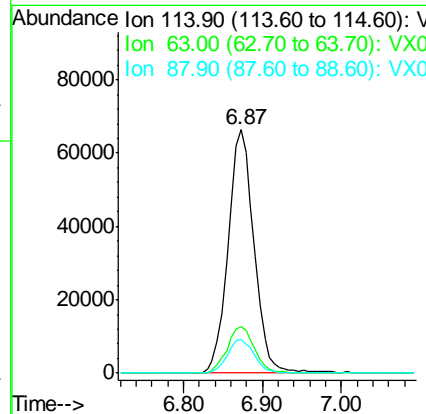
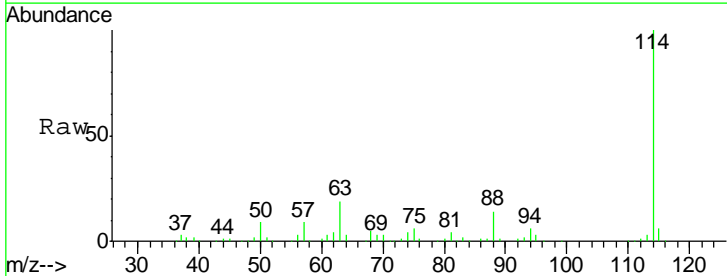
Instrument :
 MSVOA_X
 ClientSampleId :
 BR-3-031918

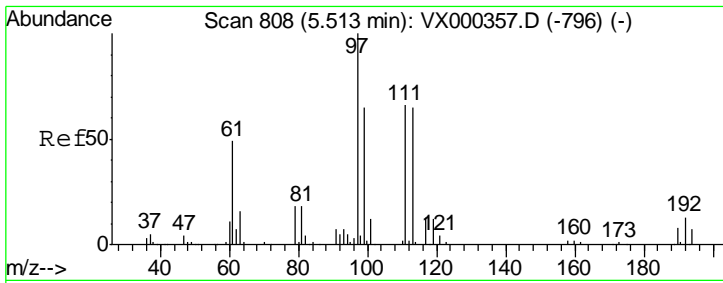
Tgt Ion	Resp	Lower	Upper
65	100		
67	51.7	0.0	103.2



#34
 1,4-Difluorobenzene
 Concen: 50.00 ug/l
 RT: 6.87 min Scan# 1031
 Delta R.T. -0.00 min
 Lab File: VX000417.D
 Acq: 22 Mar 2018 19:53

Tgt Ion	Resp	Lower	Upper
114	100		
63	19.0	0.0	38.4
88	13.9	0.0	27.0

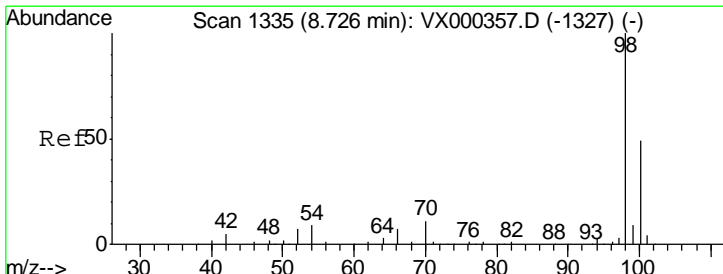
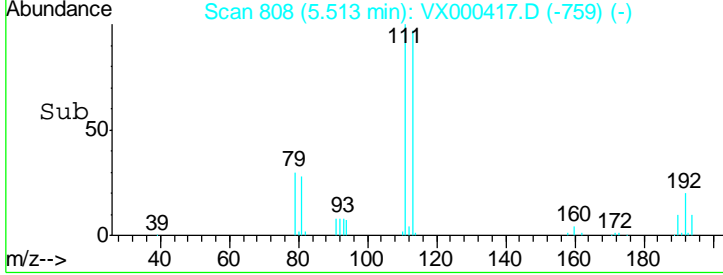
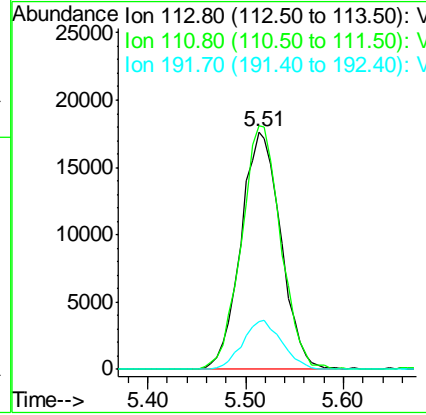
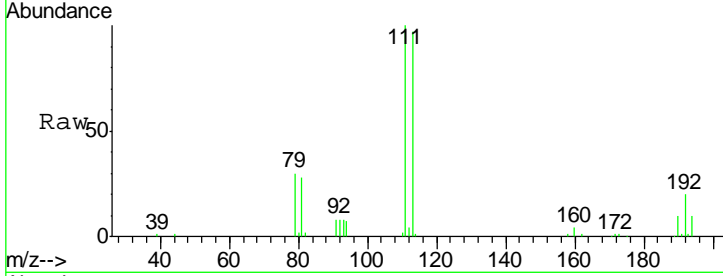




#35
 Dibromofluoromethane
 Concen: 52.24 ug/l
 RT: 5.51 min Scan# 808
 Delta R.T. -0.00 min
 Lab File: VX000417.D
 Acq: 22 Mar 2018 19:53

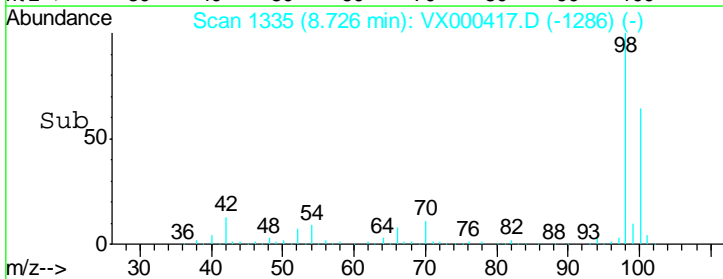
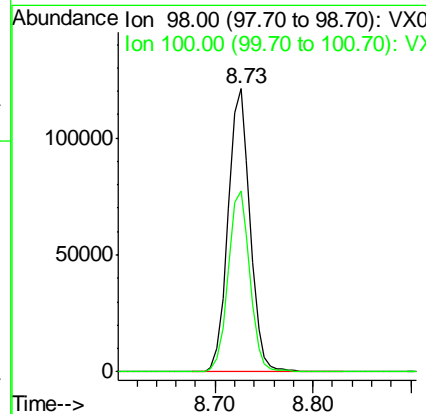
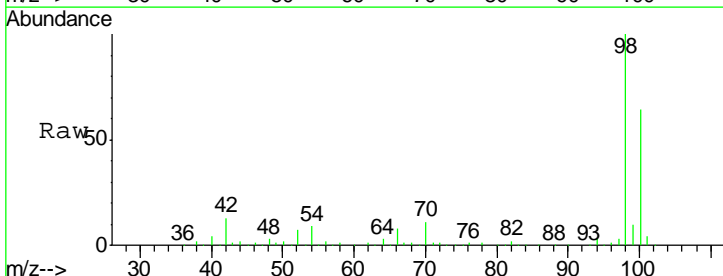
Instrument :
 MSVOA_X
ClientSampled :
 BR-3-031918

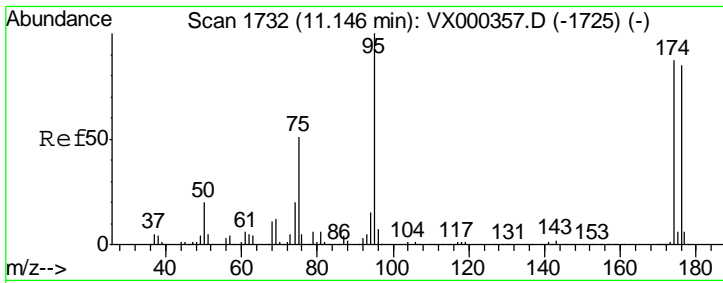
Tgt Ion	Resp	Lower	Upper
113	49970		
113	100		
111	100.9	82.4	123.6
192	20.4	15.8	23.6



#50
 Toluene-d8
 Concen: 47.49 ug/l
 RT: 8.73 min Scan# 1335
 Delta R.T. -0.00 min
 Lab File: VX000417.D
 Acq: 22 Mar 2018 19:53

Tgt Ion	Resp	Lower	Upper
98	188125		
98	100		
100	63.5	51.2	76.8

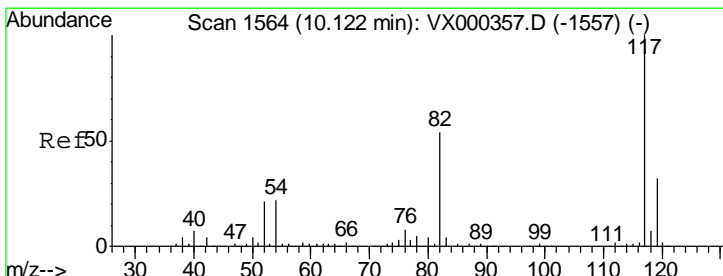
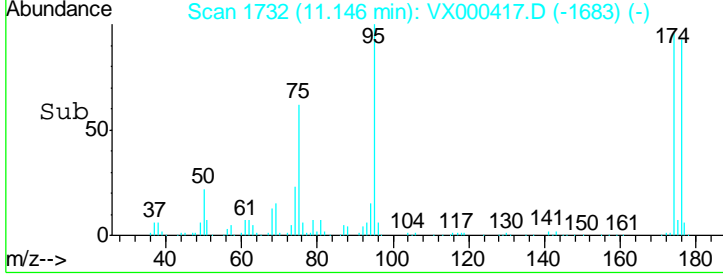
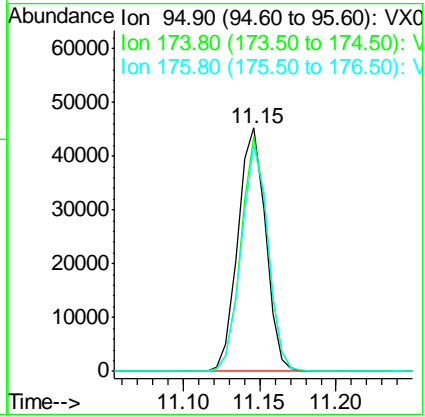
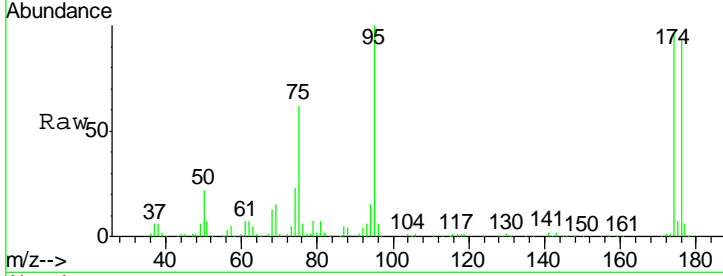




#62
 4-Bromofluorobenzene
 Concen: 35.96 ug/l
 RT: 11.15 min Scan# 1732
 Delta R.T. 0.00 min
 Lab File: VX000417.D
 Acq: 22 Mar 2018 19:53

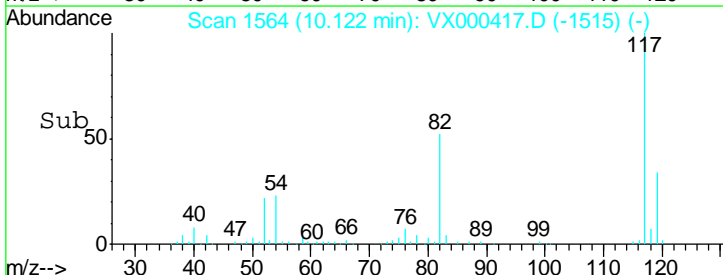
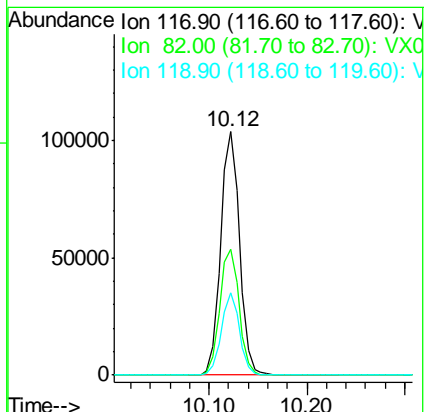
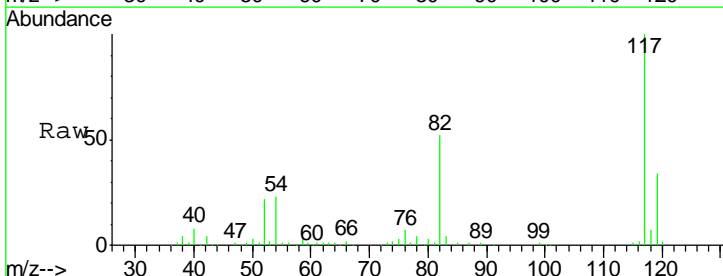
Instrument : MSVOA_X
 ClientSampled : BR-3-031918

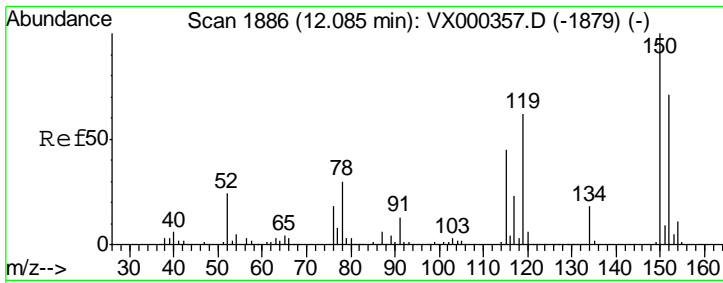
Tgt Ion	Resp	Lower	Upper
95	56877		
174	92.6	0.0	173.6
176	90.1	0.0	164.6



#63
 Chlorobenzene-d5
 Concen: 50.00 ug/l
 RT: 10.12 min Scan# 1564
 Delta R.T. -0.00 min
 Lab File: VX000417.D
 Acq: 22 Mar 2018 19:53

Tgt Ion	Resp	Lower	Upper
117	138828		
82	51.7	43.8	65.8
119	33.9	24.9	37.3





#72
 1,4-Dichlorobenzene-d4
 Concen: 50.00 ug/l
 RT: 12.09 min Scan# 1886
 Delta R.T. -0.00 min
 Lab File: VX000417.D
 Acq: 22 Mar 2018 19:53

Instrument : MSVOA_X
 ClientSampled : BR-3-031918

Tot Ion	Resp	Lower	Upper
152	100		
115	56.9	39.8	119.3
150	156.3	0.0	344.4

