

Data File : VX000542.D
 Acq On : 30 Mar 2018 04:44
 Operator : JC/MD
 Sample : J1755-06 5X
 Misc : 5.0mL/MSVOA_X/WATER
 ALS Vial : 40 Sample Multiplier: 1

Instrument :
 MSVOA_X
 ClientSampleId :
 OK-02-032818

Quant Time: Mar 30 07:05:08 2018
 Quant Method : W:\HPCHEM1\MSVOA_X\METHOD\82X032018W.M
 Quant Title : SW846 8260
 QLast Update : Wed Mar 21 04:52:42 2018
 Response via : Initial Calibration

Internal Standards	R.T.	QIon	Response	Conc	Units	Dev(Min)
1) Pentafluorobenzene	5.67	168	105971	50.00	ug/l	0.00
34) 1,4-Difluorobenzene	6.87	114	185919	50.00	ug/l	0.00
63) Chlorobenzene-d5	10.12	117	189238	50.00	ug/l	0.00
72) 1,4-Dichlorobenzene-d4	12.09	152	103524	50.00	ug/l	0.00

System Monitoring Compounds

33) 1,2-Dichloroethane-d4	6.07	65	75828	54.82	ug/l	0.00
Spiked Amount	50.000		Recovery	=	109.64%	
35) Dibromofluoromethane	5.52	113	58744	50.15	ug/l	0.00
Spiked Amount	50.000		Recovery	=	100.30%	
50) Toluene-d8	8.73	98	240654	49.60	ug/l	0.00
Spiked Amount	50.000		Recovery	=	99.20%	
62) 4-Bromofluorobenzene	11.15	95	84082	42.12	ug/l	0.00
Spiked Amount	50.000		Recovery	=	84.24%	

Target Compounds

						Qvalue
6) Chloroethane	1.71	64	236	Below Cal	#	44
8) Diethyl Ether	2.20	74	1093	1.30	ug/l	92
10) Methyl Iodide	2.52	142	63	4.32	ug/l #	78
11) Tert butyl alcohol	3.03	59	401	0.84	ug/l #	72
13) Acrolein	2.32	56	25	14.73	ug/l #	13
16) Acetone	2.45	43	8396	7.30	ug/l	89
20) Methylene Chloride	2.87	84	1146	0.86	ug/l #	83
25) 2-Butanone	4.71	43	401	0.31	ug/l #	87
31) Cyclohexane	5.66	56	2755	1.58	ug/l #	50
36) 1,1-Dichloropropene	5.68	75	7971	4.58	ug/l #	52
38) Carbon Tetrachloride	5.67	117	10904	5.97	ug/l #	15
43) Isopropyl Acetate	6.49	43	1185	0.33	ug/l #	74
74) N-amyl acetate	6.49	43	1185	Below Cal	#	59
76) 1,2,3-Trichloropropane	11.15	75	48501	21.80	ug/l #	35
81) trans-1,4-Dichloro-2-buten	11.15	75	48501	70.58	ug/l #	9
95) Naphthalene	13.84	128	2336	0.28	ug/l #	93

(#) = qualifier out of range (m) = manual integration (+) = signals summed

Data File : VX000542.D

Acq On : 30 Mar 2018 04:44

Operator : JC/MD

Sample : J1755-06 5X

Misc : 5.0mL/MSVOA_X/WATER

ALS Vial : 40 Sample Multiplier: 1

Instrument :
MSVOA_X
Client Sampled :
OK-02-032818

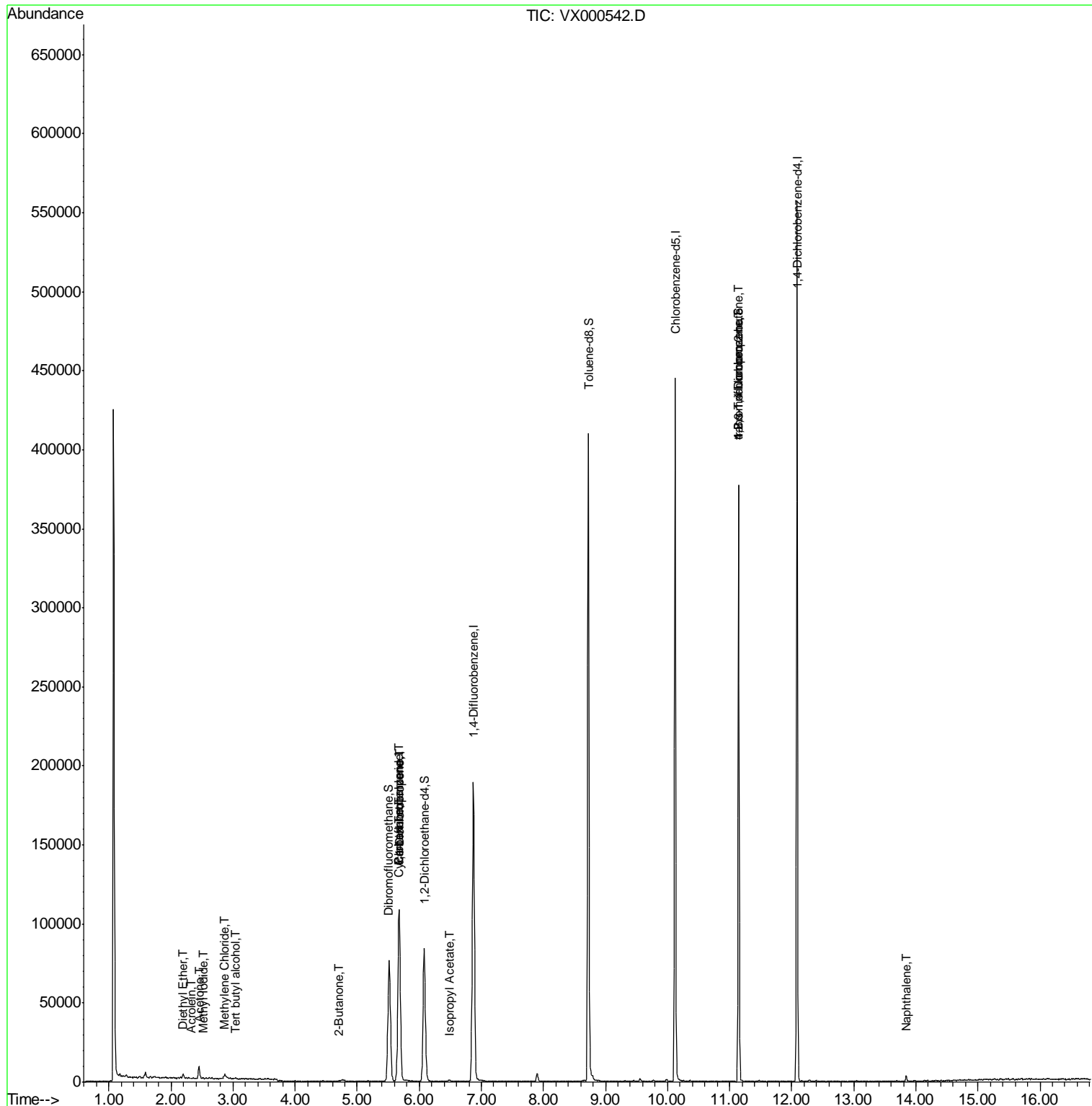
Quant Time: Mar 30 07:05:08 2018

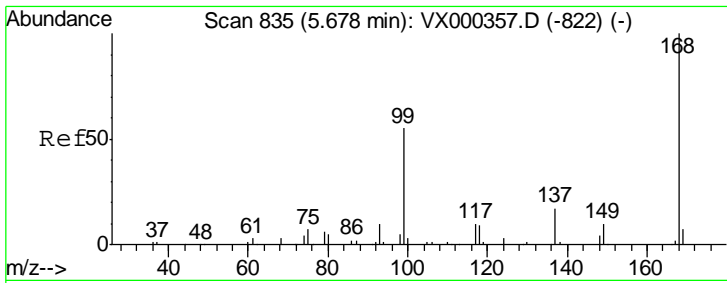
Quant Method : W:\HPCHEM1\MSVOA_X\METHOD\82X032018W.M

Quant Title : SW846 8260

QLast Update : Wed Mar 21 04:52:42 2018

Response via : Initial Calibration

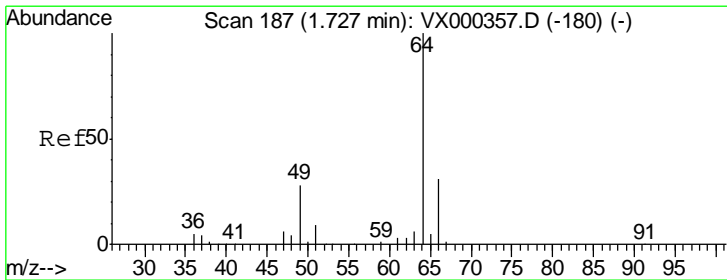
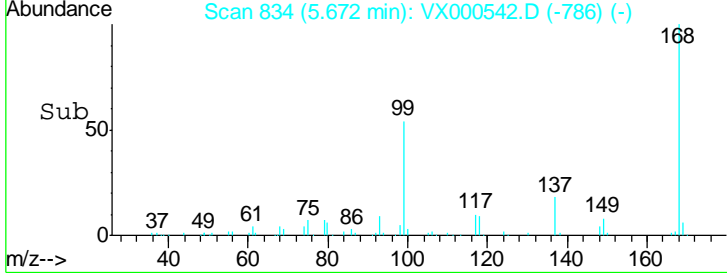
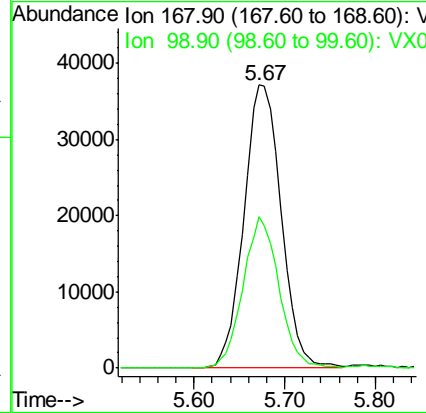
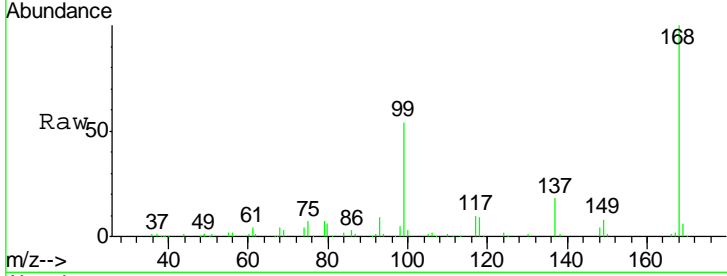




#1
 Pentafluorobenzene
 Concen: 50.00 ug/l
 RT: 5.67 min Scan# 834
 Delta R.T. -0.01 min
 Lab File: VX000542.D
 Acq: 30 Mar 2018 04:44

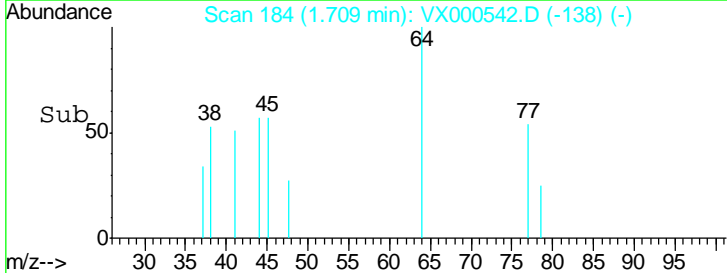
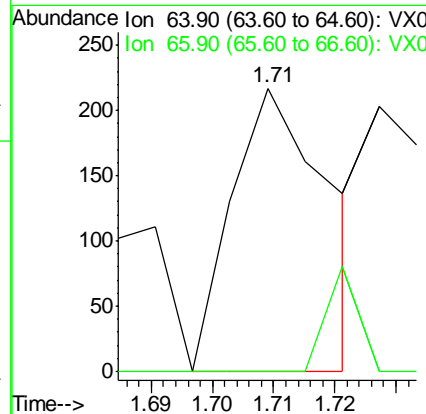
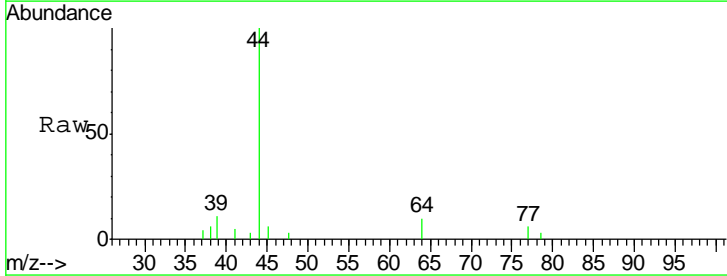
Instrument : MSVOA_X
 ClientSampled : OK-02-032818

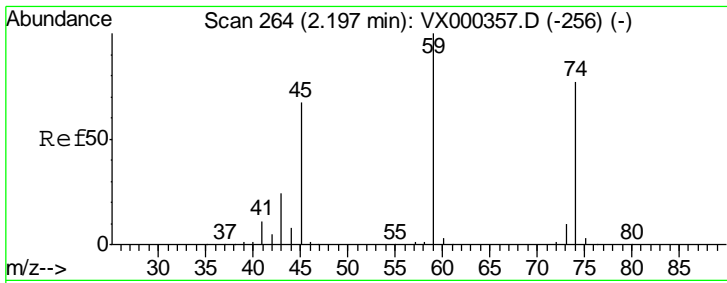
Tgt Ion: 168 Resp: 105971
 Ion Ratio Lower Upper
 168 100
 99 53.6 45.8 68.6



#6
 Chloroethane
 Concen: Below Cal
 RT: 1.71 min Scan# 184
 Delta R.T. -0.02 min
 Lab File: VX000542.D
 Acq: 30 Mar 2018 04:44

Tgt Ion: 64 Resp: 236
 Ion Ratio Lower Upper
 64 100
 66 0.0 24.8 37.2#



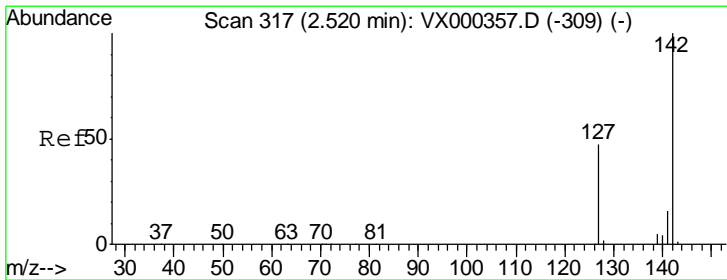
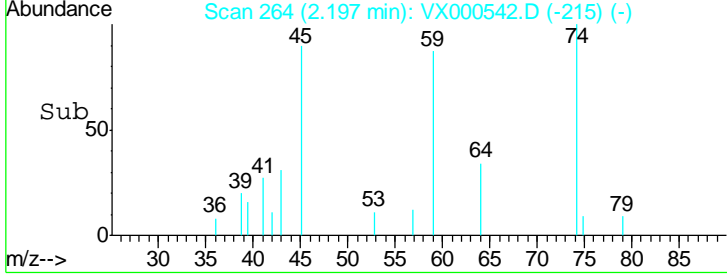
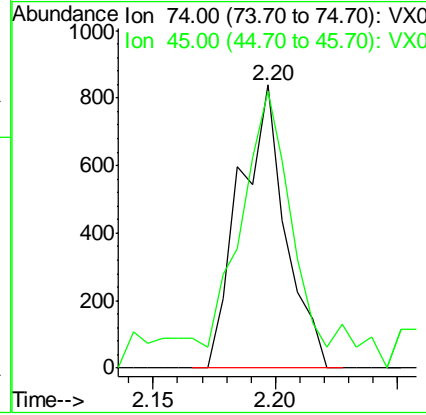
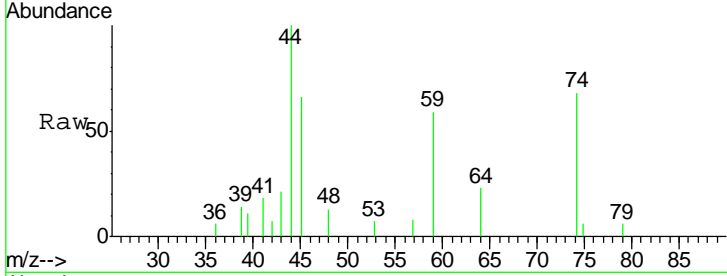


#8
 Diethyl Ether
 Concen: 1.30 ug/l
 RT: 2.20 min Scan# 264
 Delta R.T. -0.00 min
 Lab File: VX000542.D
 Acq: 30 Mar 2018 04:44

Instrument : MSVOA_X
 ClientSampleId : OK-02-032818

Tgt Ion: 74 Resp: 1093

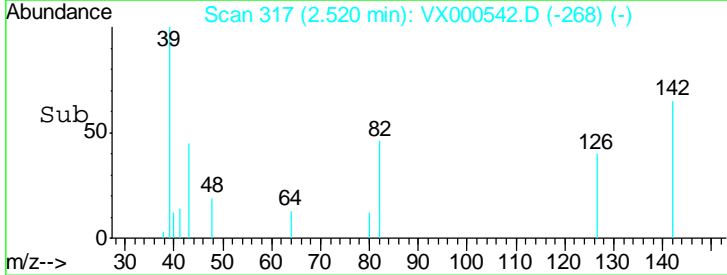
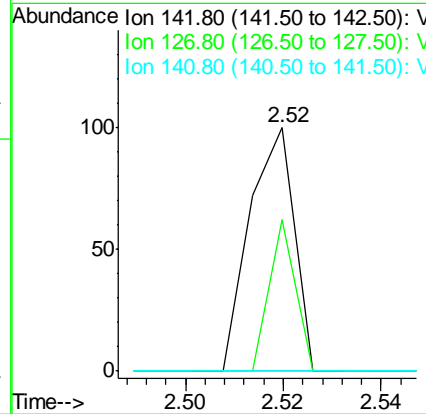
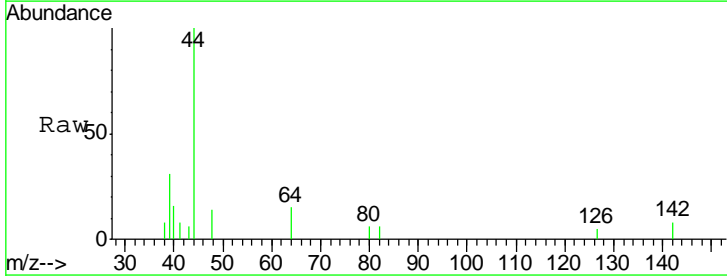
Ion	Ratio	Lower	Upper
74	100		
45	97.3	45.1	135.3

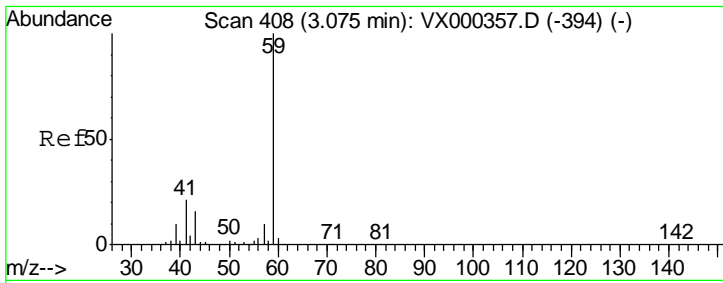


#10
 Methyl Iodide
 Concen: 4.32 ug/l
 RT: 2.52 min Scan# 317
 Delta R.T. 0.00 min
 Lab File: VX000542.D
 Acq: 30 Mar 2018 04:44

Tgt Ion: 142 Resp: 63

Ion	Ratio	Lower	Upper
142	100		
127	36.5	39.2	58.8#
141	0.0	11.7	17.5#

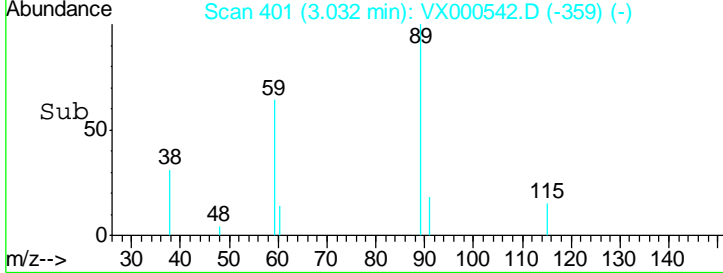
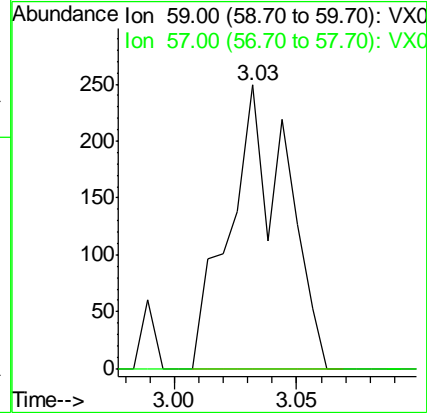
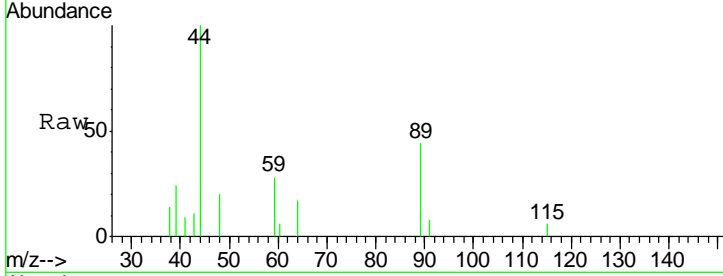




#11
 Tert butyl alcohol
 Concen: 0.84 ug/l
 RT: 3.03 min Scan# 401
 Delta R.T. -0.04 min
 Lab File: VX000542.D
 Acq: 30 Mar 2018 04:44

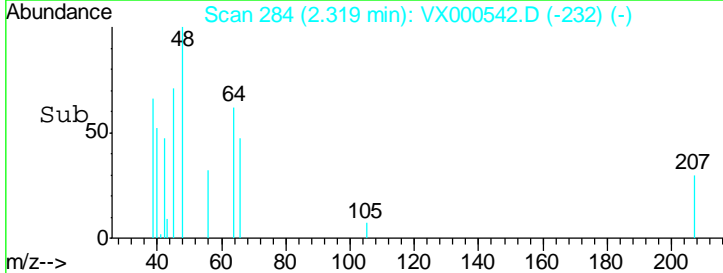
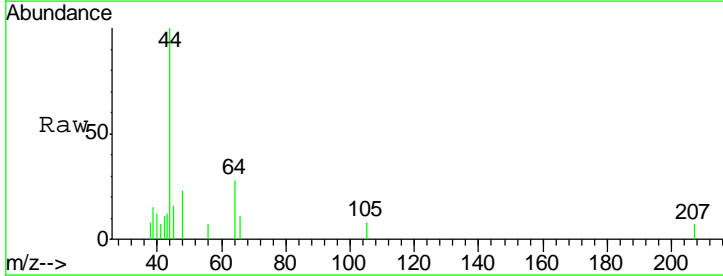
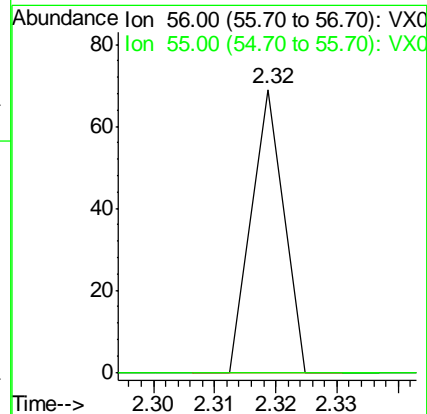
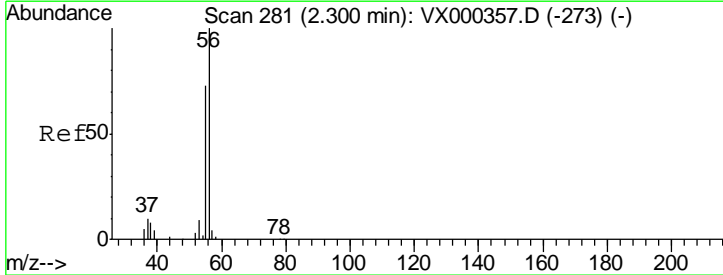
Instrument :
 MSVOA_X
 ClientSampled :
 OK-02-032818

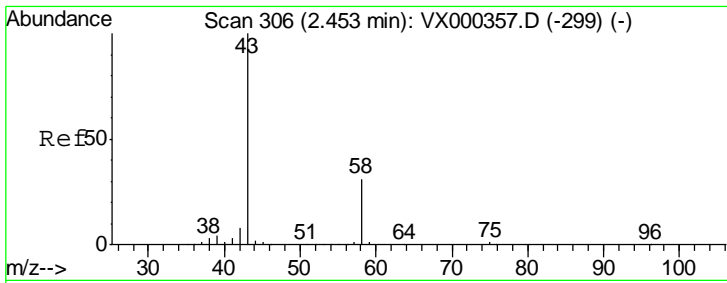
Tgt Ion: 59 Resp: 401
 Ion Ratio Lower Upper
 59 100
 57 0.0 8.4 12.6#



#13
 Acrolein
 Concen: 14.73 ug/l
 RT: 2.32 min Scan# 284
 Delta R.T. 0.02 min
 Lab File: VX000542.D
 Acq: 30 Mar 2018 04:44

Tgt Ion: 56 Resp: 25
 Ion Ratio Lower Upper
 56 100
 55 0.0 58.8 88.2#

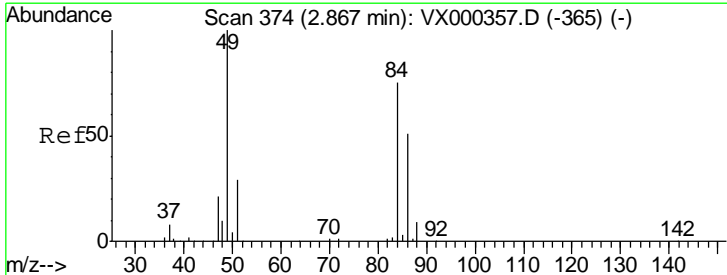
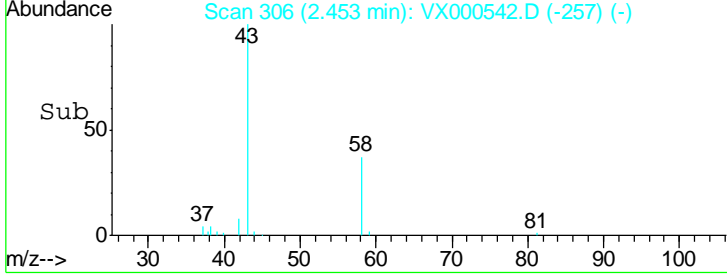
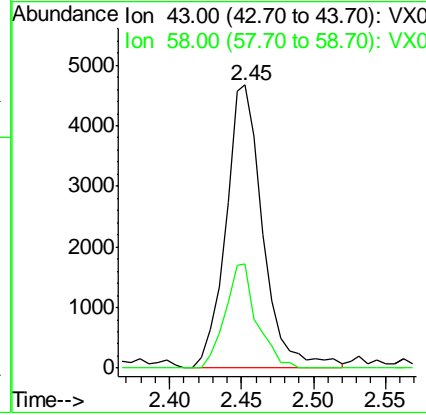
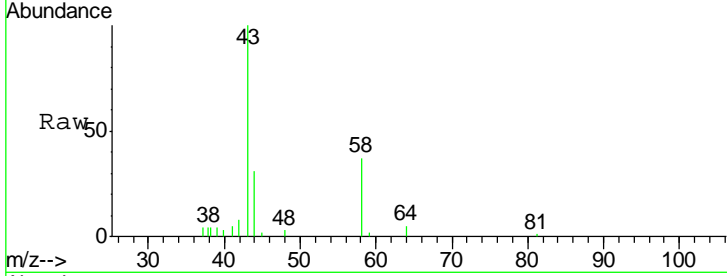




#16
 Acetone
 Concen: 7.30 ug/l
 RT: 2.45 min Scan# 306
 Delta R.T. -0.00 min
 Lab File: VX000542.D
 Acq: 30 Mar 2018 04:44

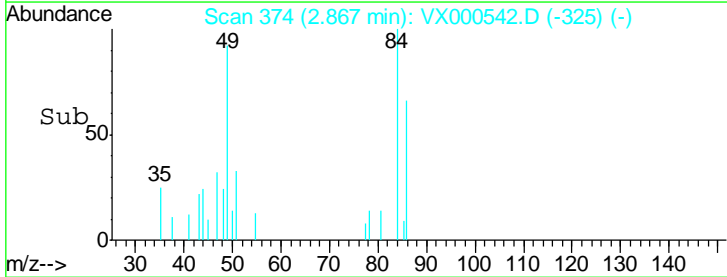
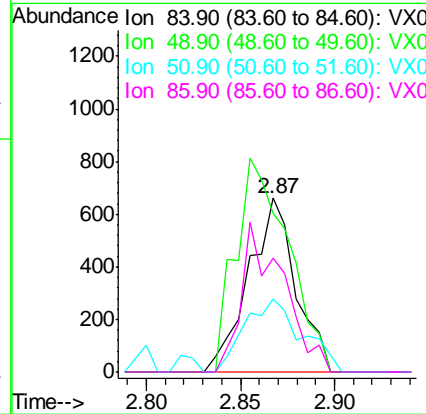
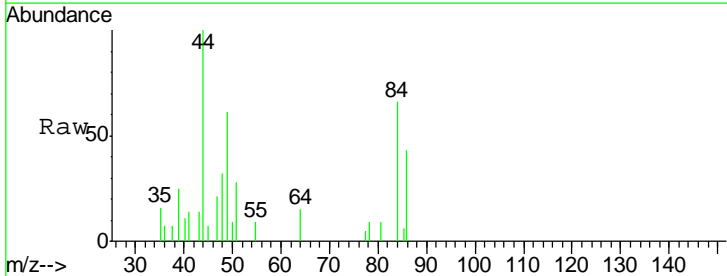
Instrument :
 MSVOA_X
ClientSampled :
 OK-02-032818

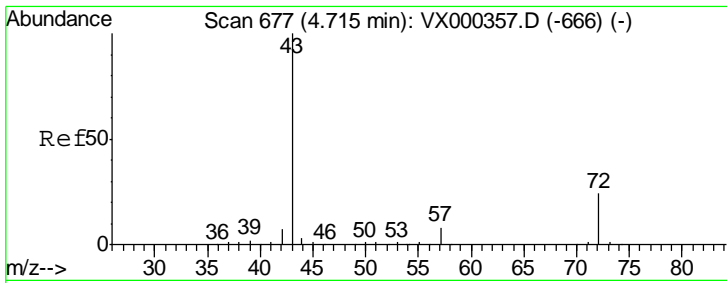
Tgt Ion	Resp	Lower	Upper
43	100		
58	36.8	24.7	37.1



#20
 Methylene Chloride
 Concen: 0.86 ug/l
 RT: 2.87 min Scan# 374
 Delta R.T. -0.00 min
 Lab File: VX000542.D
 Acq: 30 Mar 2018 04:44

Tgt Ion	Resp	Lower	Upper
84	100		
49	91.8	100.6	151.0#
51	42.4	31.6	47.4
86	65.8	52.6	78.8

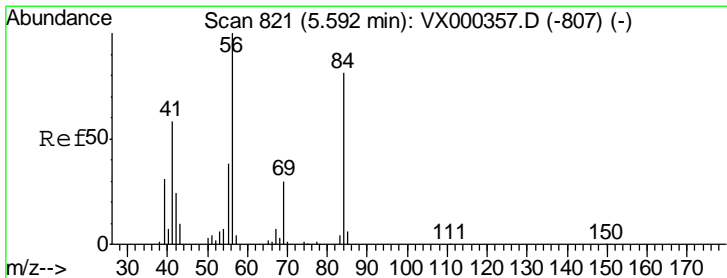
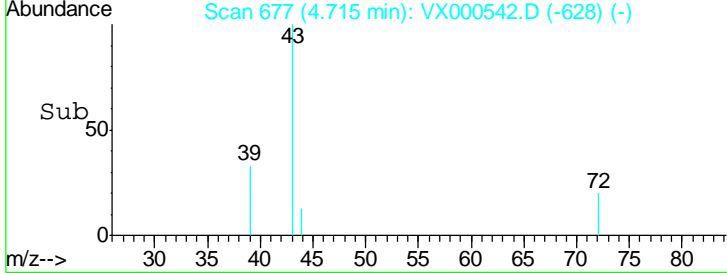
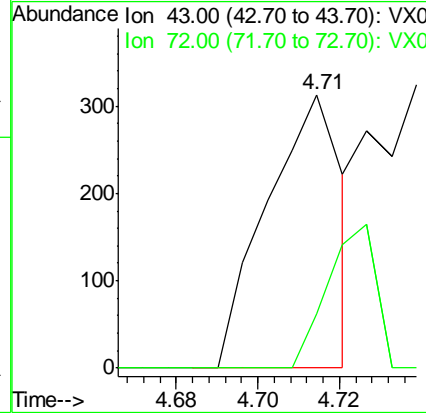
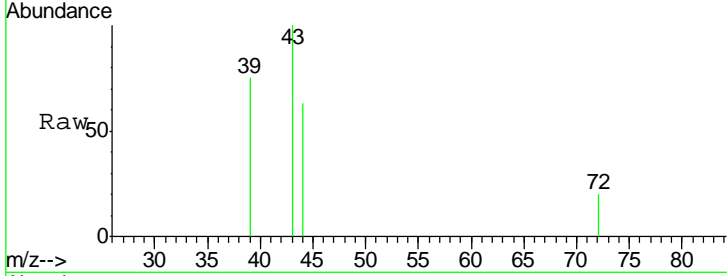




#25
 2-Butanone
 Concen: 0.31 ug/l
 RT: 4.71 min Scan# 677
 Delta R.T. -0.00 min
 Lab File: VX000542.D
 Acq: 30 Mar 2018 04:44

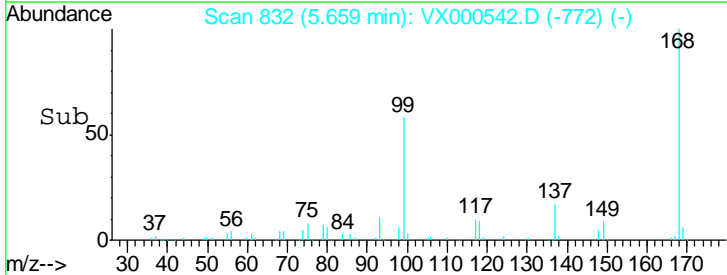
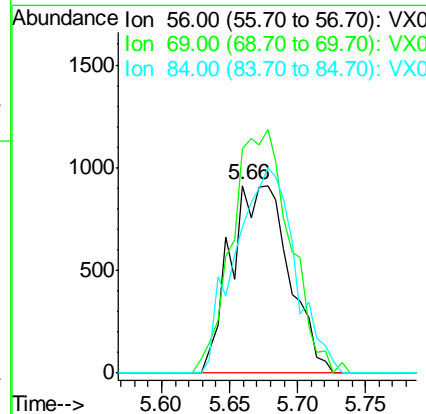
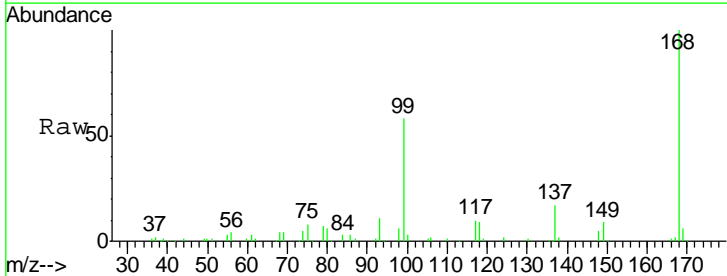
Instrument :
 MSVOA_X
 ClientSampled :
 OK-02-032818

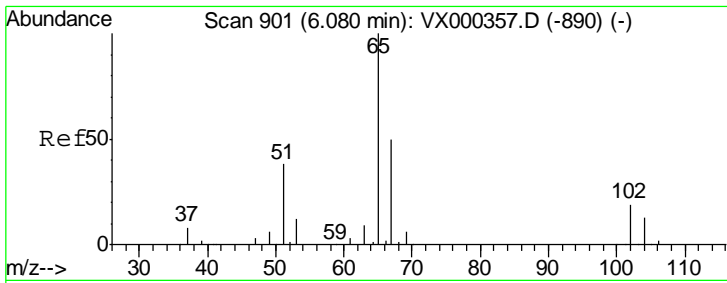
Tgt Ion: 43 Resp: 401
 Ion Ratio Lower Upper
 43 100
 72 19.8 21.0 31.6#



#31
 Cyclohexane
 Concen: 1.58 ug/l
 RT: 5.66 min Scan# 832
 Delta R.T. 0.07 min
 Lab File: VX000542.D
 Acq: 30 Mar 2018 04:44

Tgt Ion: 56 Resp: 2755
 Ion Ratio Lower Upper
 56 100
 69 119.4 23.4 35.0#
 84 78.1 71.0 106.4

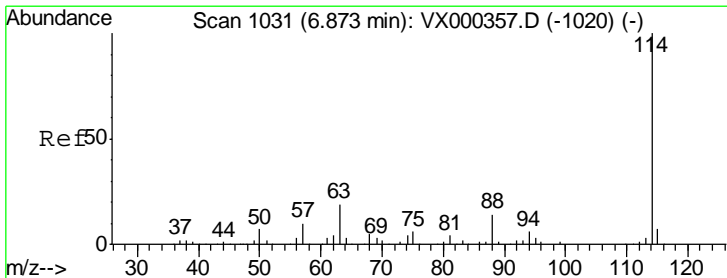
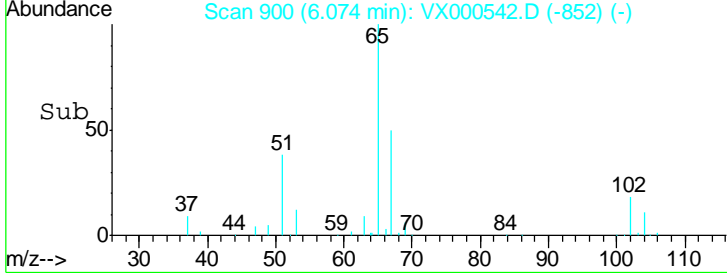
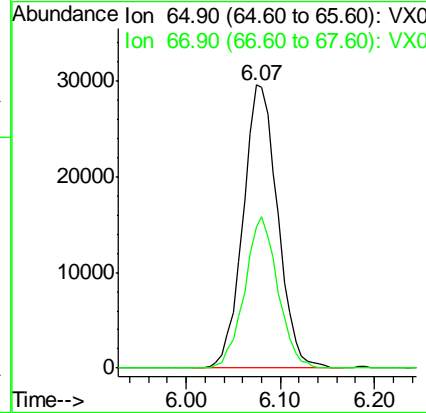
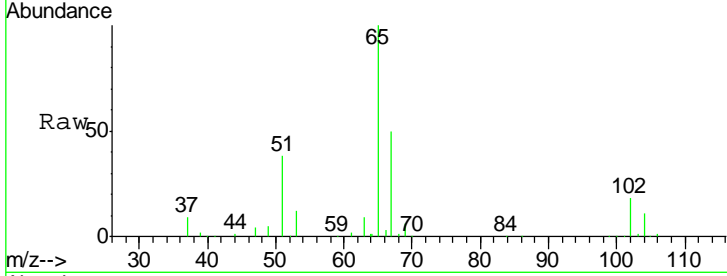




#33
 1,2-Dichloroethane-d4
 Concen: 54.82 ug/l
 RT: 6.07 min Scan# 900
 Delta R.T. -0.01 min
 Lab File: VX000542.D
 Acq: 30 Mar 2018 04:44

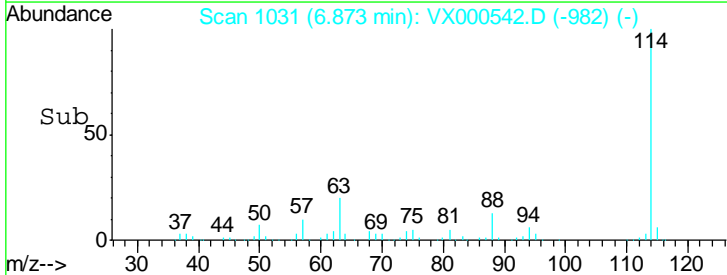
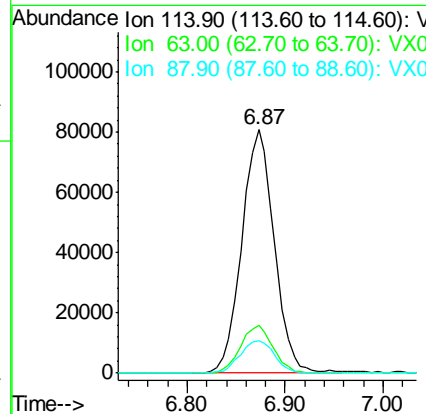
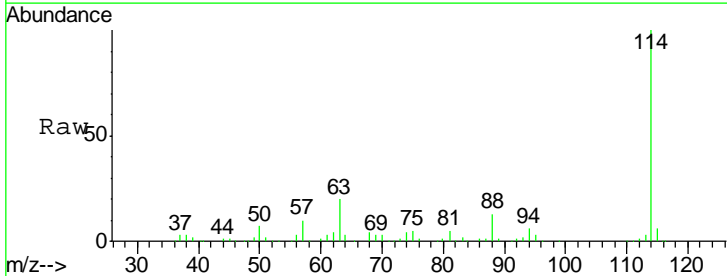
Instrument :
 MSVOA_X
ClientSampled :
 OK-02-032818

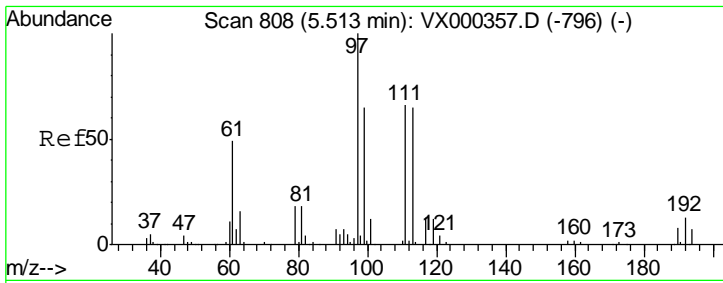
Tgt Ion: 65 Resp: 75828
 Ion Ratio Lower Upper
 65 100
 67 51.2 0.0 103.2



#34
 1,4-Difluorobenzene
 Concen: 50.00 ug/l
 RT: 6.87 min Scan# 1031
 Delta R.T. -0.00 min
 Lab File: VX000542.D
 Acq: 30 Mar 2018 04:44

Tgt Ion: 114 Resp: 185919
 Ion Ratio Lower Upper
 114 100
 63 19.7 0.0 38.4
 88 13.1 0.0 27.0

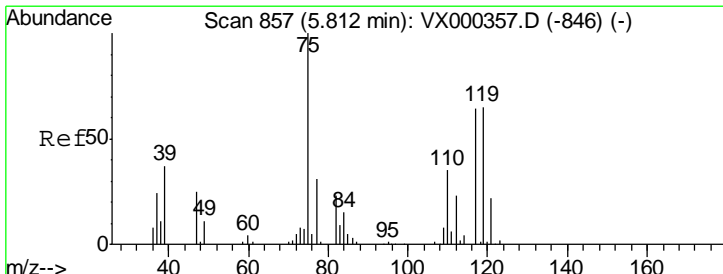
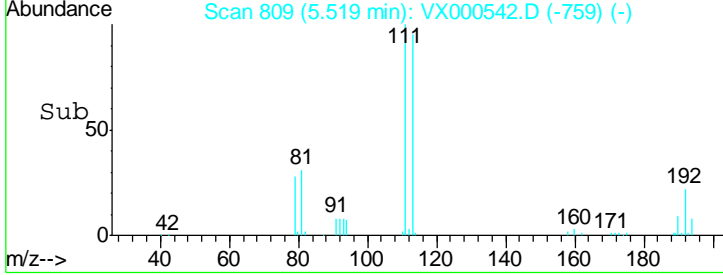
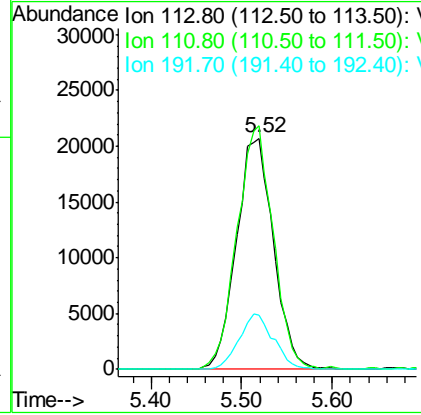
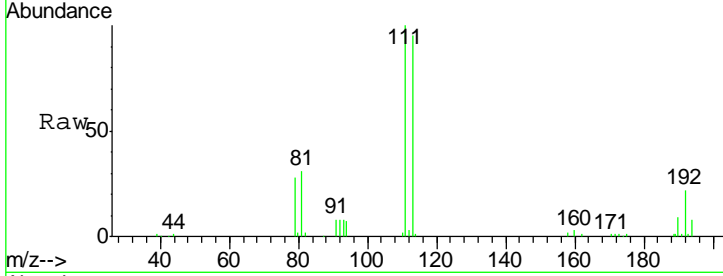




#35
 Dibromofluoromethane
 Concen: 50.15 ug/l
 RT: 5.52 min Scan# 809
 Delta R.T. 0.01 min
 Lab File: VX000542.D
 Acq: 30 Mar 2018 04:44

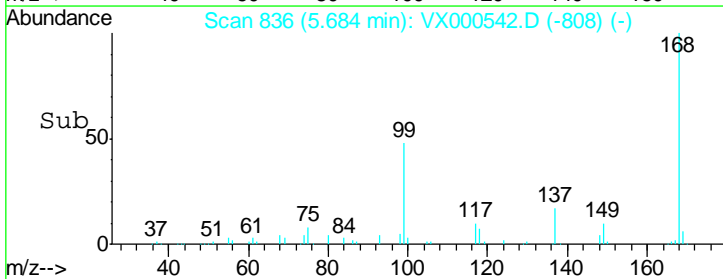
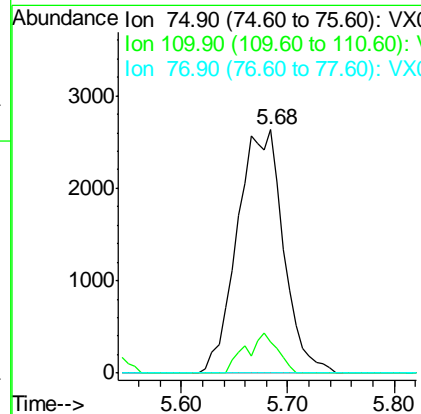
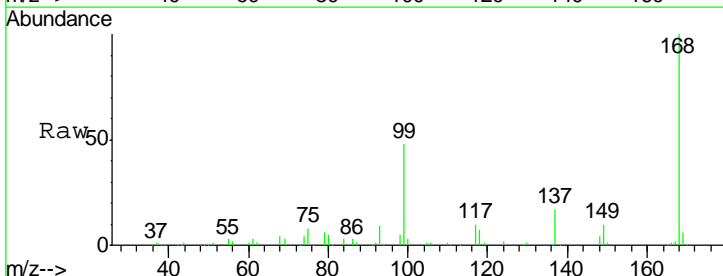
Instrument :
 MSVOA_X
ClientSampled :
 OK-02-032818

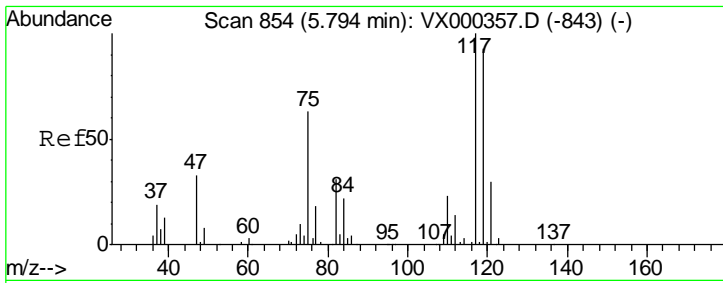
Tgt Ion	Resp	Lower	Upper
113	58744		
113	100		
111	102.5	82.4	123.6
192	22.4	15.8	23.6



#36
 1,1-Dichloropropene
 Concen: 4.58 ug/l
 RT: 5.68 min Scan# 836
 Delta R.T. -0.13 min
 Lab File: VX000542.D
 Acq: 30 Mar 2018 04:44

Tgt Ion	Resp	Lower	Upper
75	7971		
75	100		
110	11.4	17.9	53.7#
77	0.0	24.0	36.0#

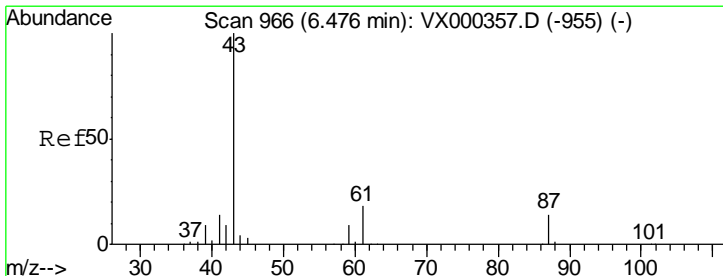
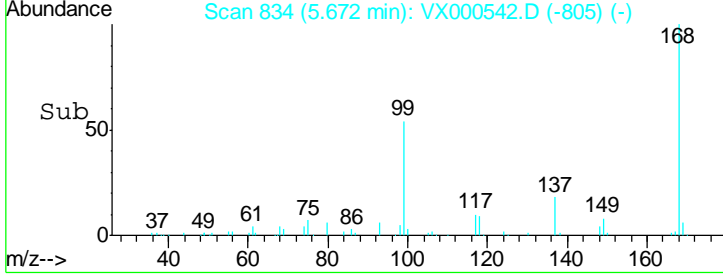
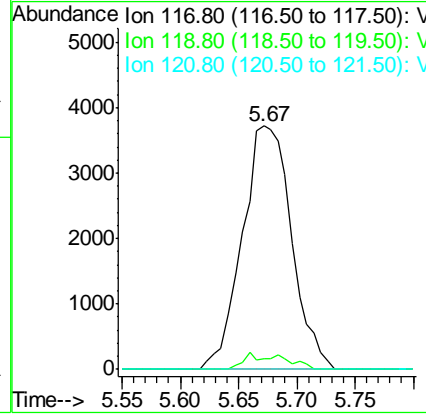
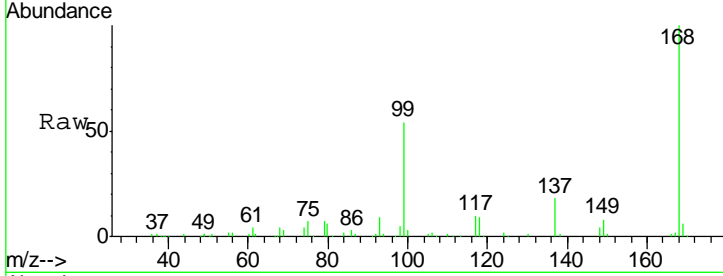




#38
 Carbon Tetrachloride
 Concen: 5.97 ug/l
 RT: 5.67 min Scan# 834
 Delta R.T. -0.12 min
 Lab File: VX000542.D
 Acq: 30 Mar 2018 04:44

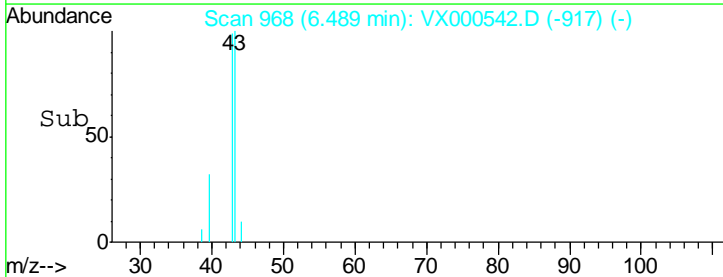
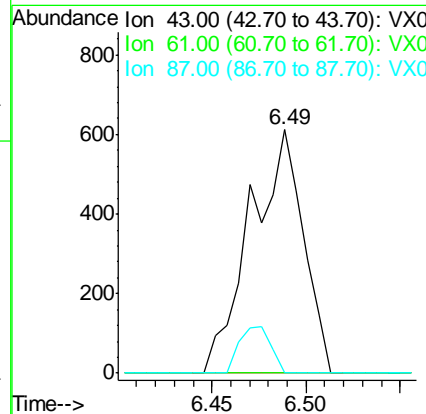
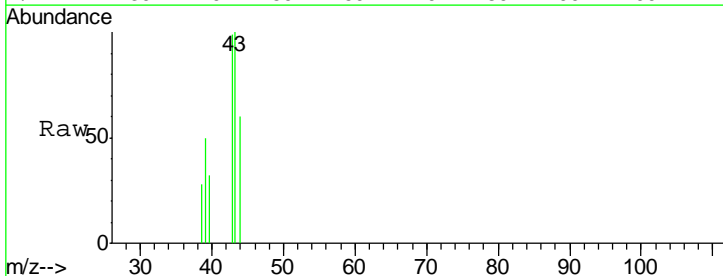
Instrument : MSVOA_X
 ClientSampled : OK-02-032818

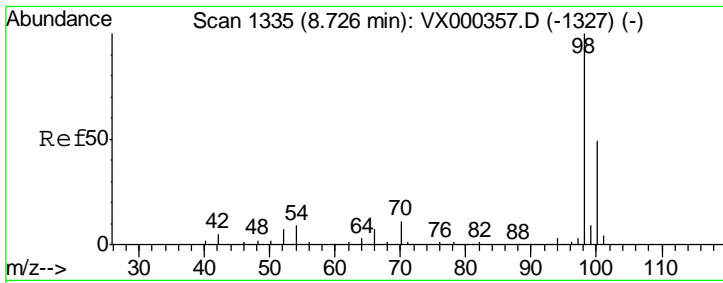
Tgt Ion	Resp	Lower	Upper
117	10904		
119	4.5	77.4	116.2#
121	0.0	24.8	37.2#



#43
 Isopropyl Acetate
 Concen: 0.33 ug/l
 RT: 6.49 min Scan# 968
 Delta R.T. 0.01 min
 Lab File: VX000542.D
 Acq: 30 Mar 2018 04:44

Tgt Ion	Resp	Lower	Upper
43	1185		
61	0.0	14.4	21.6#
87	11.4	11.0	16.4

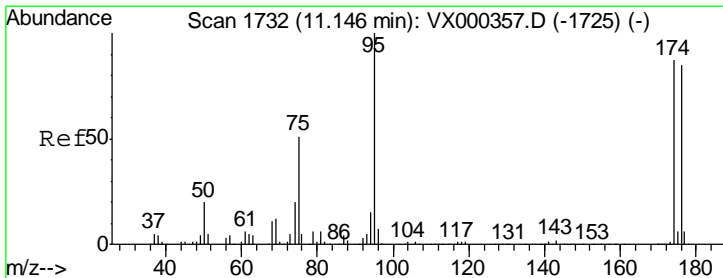
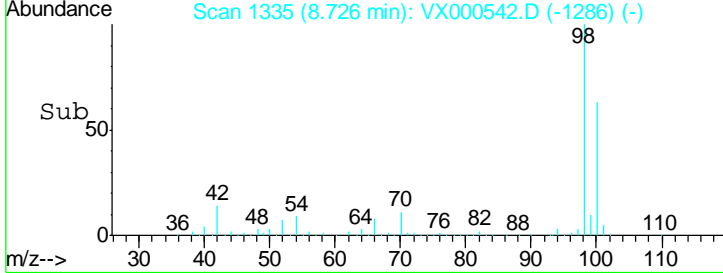
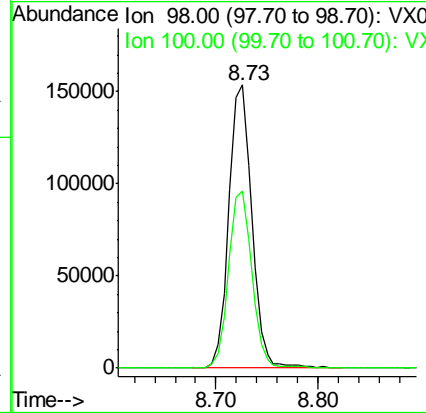
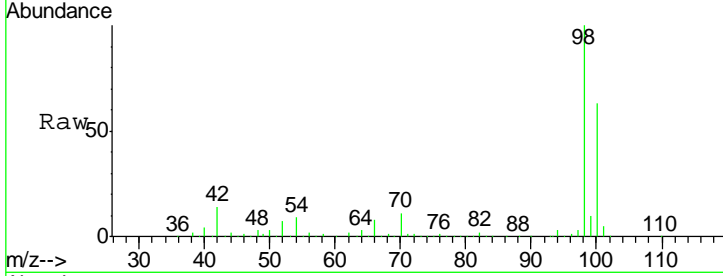




#50
 Toluene-d8
 Concen: 49.60 ug/l
 RT: 8.73 min Scan# 1335
 Delta R.T. -0.00 min
 Lab File: VX000542.D
 Acq: 30 Mar 2018 04:44

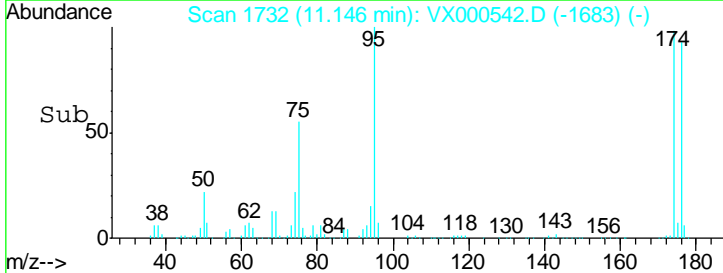
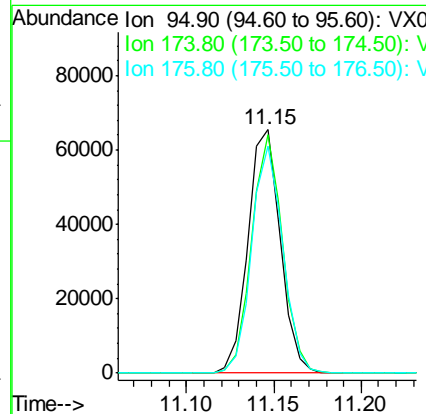
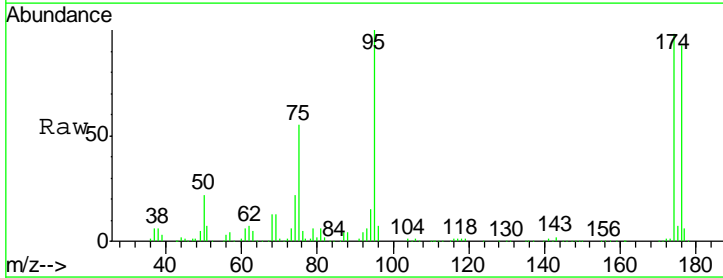
Instrument :
 MSVOA_X
ClientSampled :
 OK-02-032818

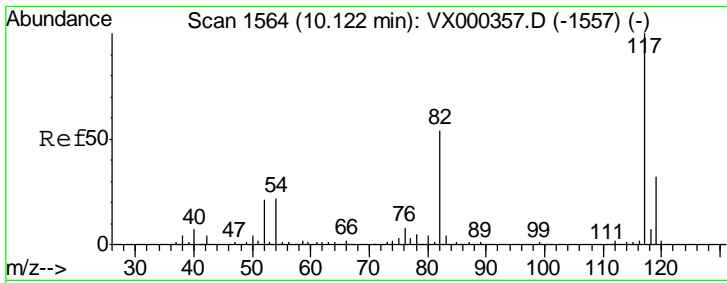
Tgt Ion: 98 Resp: 240654
 Ion Ratio Lower Upper
 98 100
 100 63.2 51.2 76.8



#62
 4-Bromofluorobenzene
 Concen: 42.12 ug/l
 RT: 11.15 min Scan# 1732
 Delta R.T. 0.00 min
 Lab File: VX000542.D
 Acq: 30 Mar 2018 04:44

Tgt Ion: 95 Resp: 84082
 Ion Ratio Lower Upper
 95 100
 174 93.7 0.0 173.6
 176 89.9 0.0 164.6



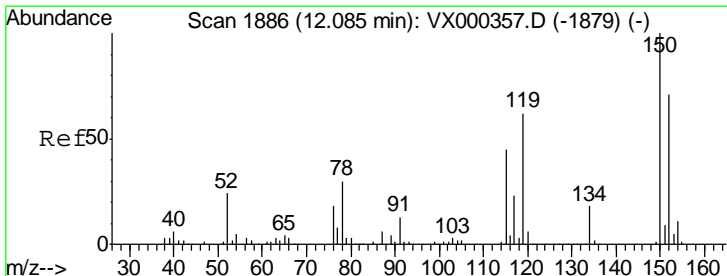
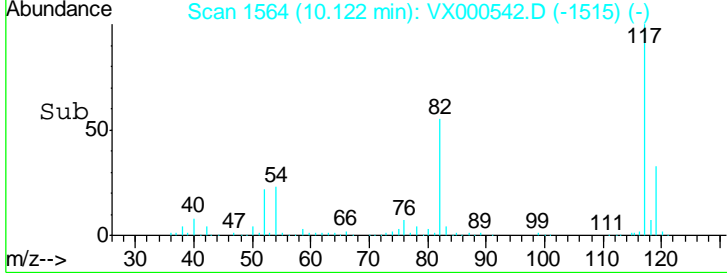
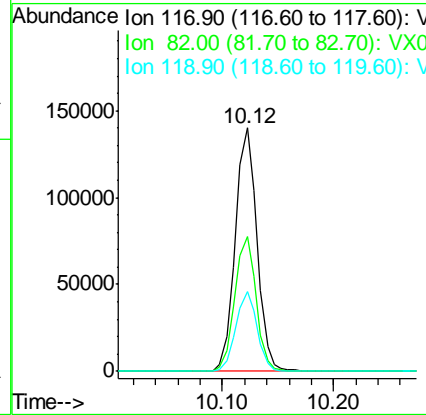
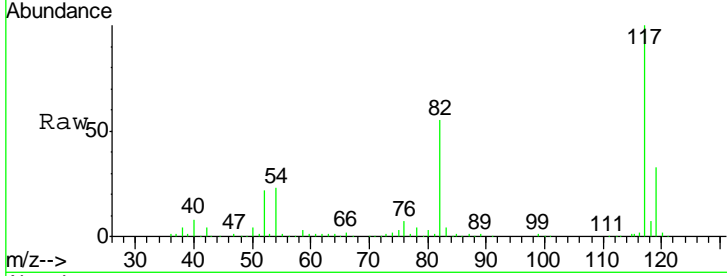


#63
 Chlorobenzene-d5
 Concen: 50.00 ug/l
 RT: 10.12 min Scan# 1564
 Delta R.T. -0.00 min
 Lab File: VX000542.D
 Acq: 30 Mar 2018 04:44

Instrument : MSVOA_X
 ClientSampled : OK-02-032818

Tgt Ion:117 Resp: 189238

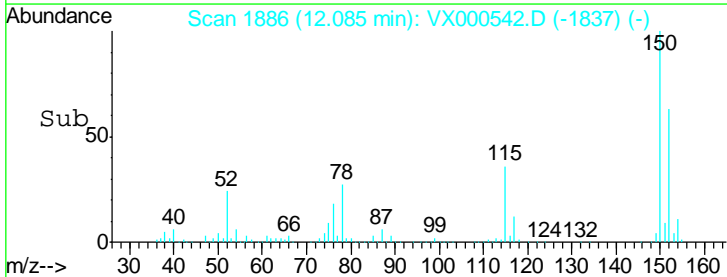
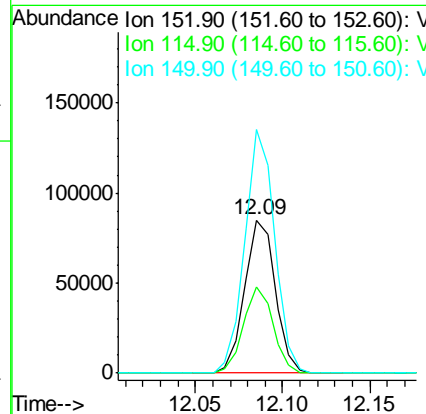
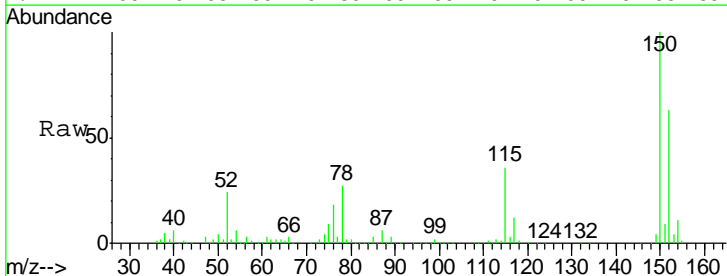
Ion	Ratio	Lower	Upper
117	100		
82	55.2	43.8	65.8
119	32.7	24.9	37.3

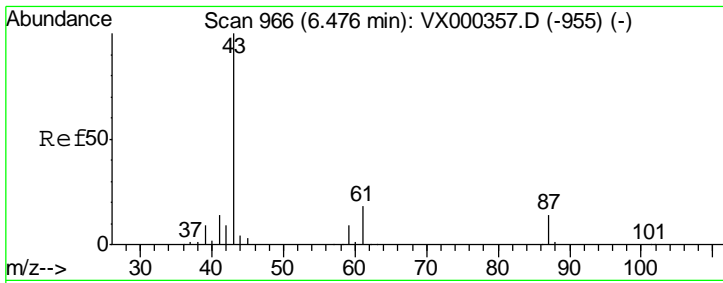


#72
 1,4-Dichlorobenzene-d4
 Concen: 50.00 ug/l
 RT: 12.09 min Scan# 1886
 Delta R.T. -0.00 min
 Lab File: VX000542.D
 Acq: 30 Mar 2018 04:44

Tgt Ion:152 Resp: 103524

Ion	Ratio	Lower	Upper
152	100		
115	55.0	39.8	119.3
150	155.5	0.0	344.4

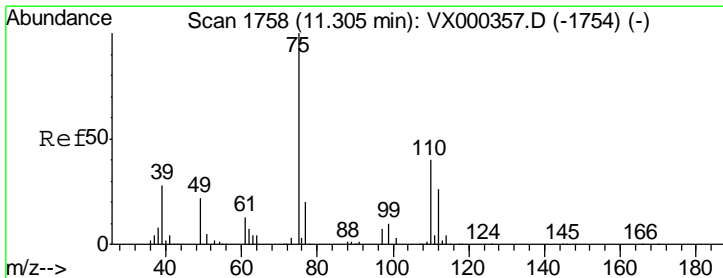
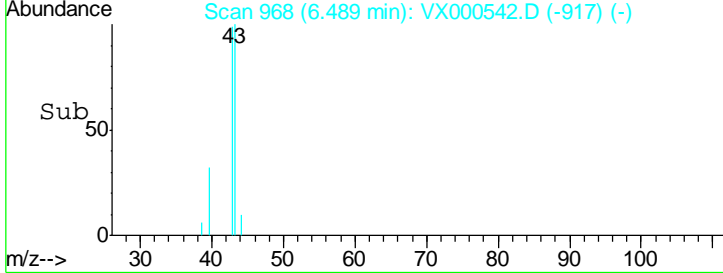
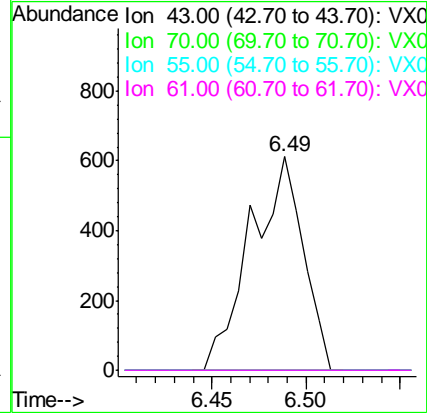
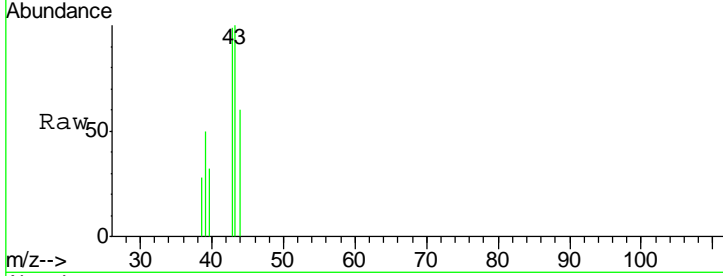




#74
 N-amyI acetate
 Concen: Below Cal
 RT: 6.49 min Scan# 968
 Delta R.T. 0.01 min
 Lab File: VX000542.D
 Acq: 30 Mar 2018 04:44

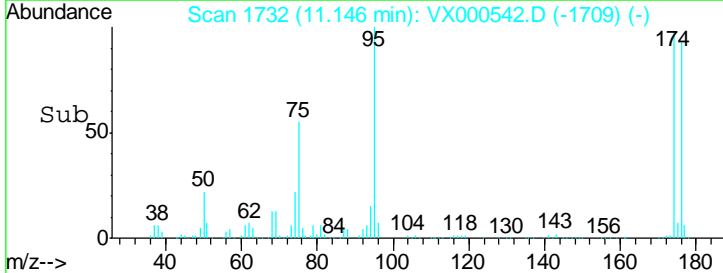
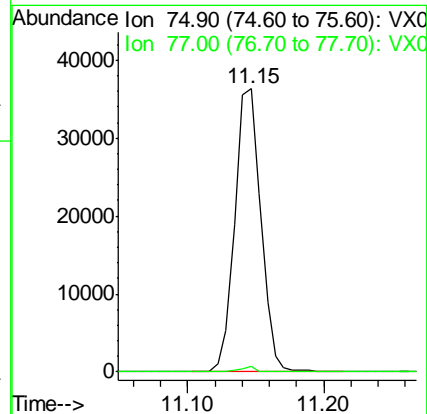
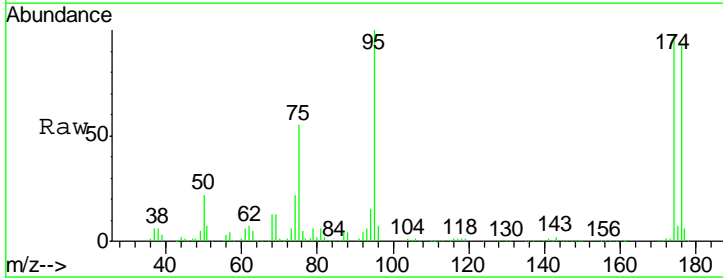
Instrument :
 MSVOA_X
 ClientSampleId :
 OK-02-032818

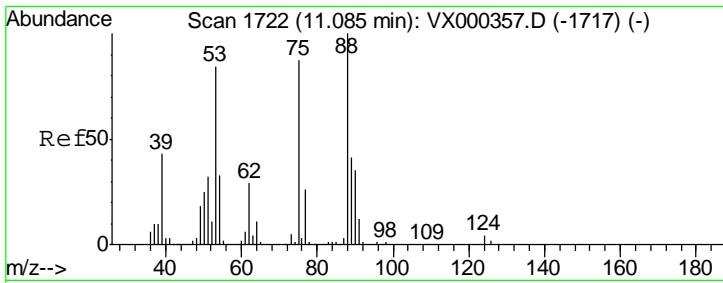
Tgt Ion	Resp	Lower	Upper
43	1185		
70	0.0	0.0	0.0
55	0.0	0.0	0.0
61	0.0	14.4	21.6#



#76
 1,2,3-Trichloropropane
 Concen: 21.80 ug/l
 RT: 11.15 min Scan# 1732
 Delta R.T. -0.16 min
 Lab File: VX000542.D
 Acq: 30 Mar 2018 04:44

Tgt Ion	Resp	Lower	Upper
75	48501		
77	1.3	21.4	64.2#

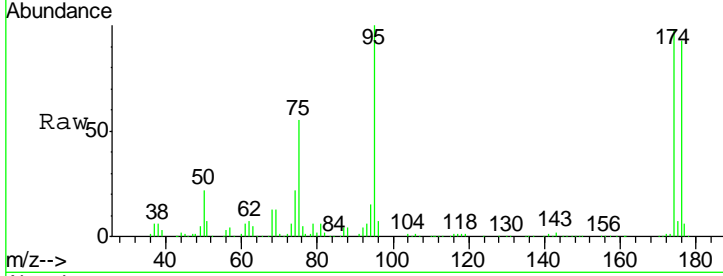




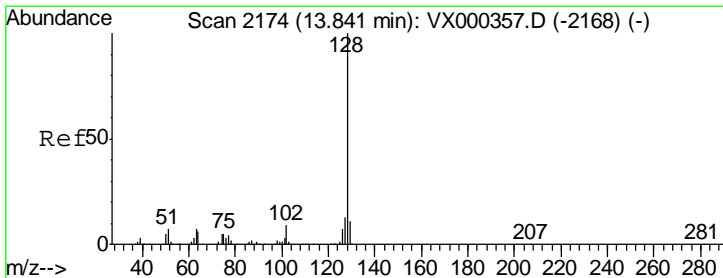
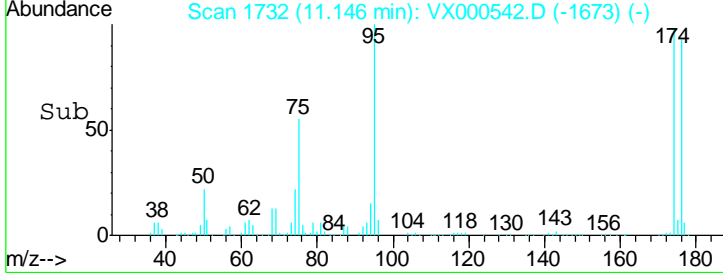
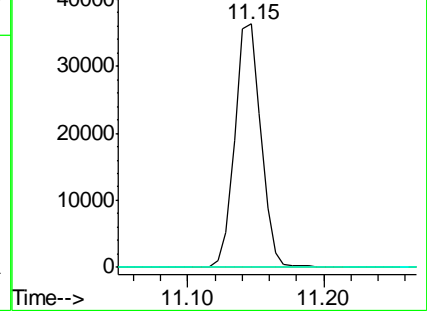
#81
 trans-1,4-Dichloro-2-butene
 Concen: 70.58 ug/l
 RT: 11.15 min Scan# 1732
 Delta R.T. 0.06 min
 Lab File: VX000542.D
 Acq: 30 Mar 2018 04:44

Instrument :
 MSVOA_X
 ClientSampled :
 OK-02-032818

Tgt Ion	Resp	Lower	Upper
75	48501		
53	0.0	80.7	121.1#
89	0.0	39.4	59.0#

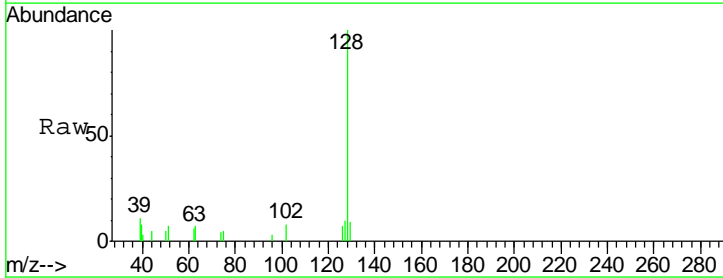


Abundance Ion 74.90 (74.60 to 75.60): VX0
 Ion 53.00 (52.70 to 53.70): VX0
 Ion 88.90 (88.60 to 89.60): VX0



#95
 Naphthalene
 Concen: 0.28 ug/l
 RT: 13.84 min Scan# 2174
 Delta R.T. -0.00 min
 Lab File: VX000542.D
 Acq: 30 Mar 2018 04:44

Tgt Ion	Resp	Lower	Upper
128	2336		
127	9.8	10.6	15.8#
129	9.4	8.9	13.3



Abundance Ion 128.00 (127.70 to 128.70): V
 Ion 127.00 (126.70 to 127.70): V
 Ion 129.00 (128.70 to 129.70): V

