

Data Path : W:\HPCHEM1\MSVOA X\DATA\VX032918\
 Data File : VX000548.D
 Acq On : 30 Mar 2018 07:17
 Operator : JC/MD
 Sample : J2127-02
 Misc : 5.0mL/MSVOA X/WATER
 ALS Vial : 46 Sample Multiplier: 1

Instrument :
 MSVOA_X
 ClientSampleId :
 MW-2

Quant Time: Mar 30 08:50:29 2018
 Quant Method : W:\HPCHEM1\MSVOA_X\METHOD\82X032018W.M
 Quant Title : SW846 8260
 QLast Update : Wed Mar 21 04:52:42 2018
 Response via : Initial Calibration

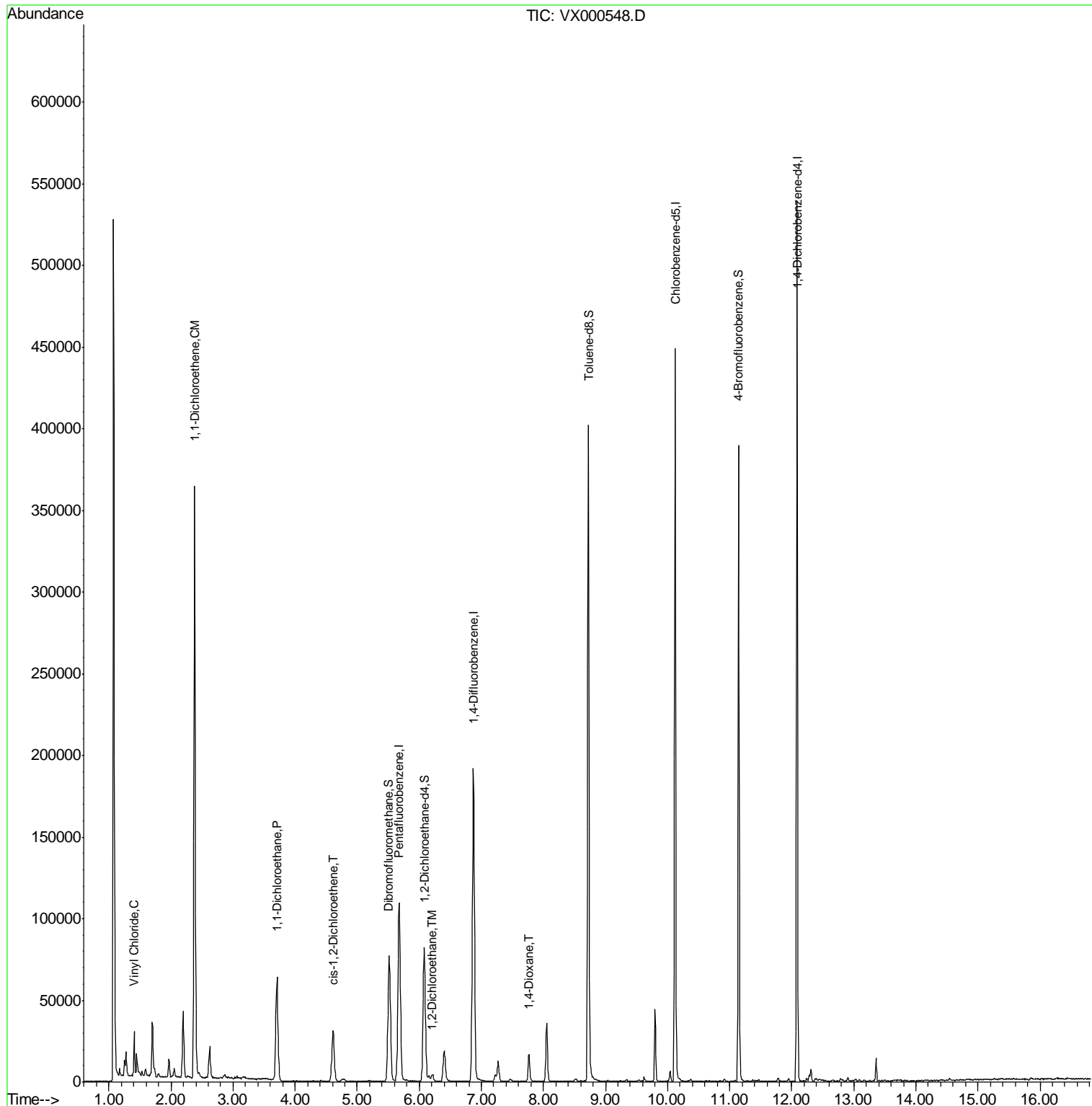
Internal Standards	R.T.	QIon	Response	Conc	Units	Dev(Min)
1) Pentafluorobenzene	5.67	168	104112	50.00	ug/l	0.00
34) 1,4-Difluorobenzene	6.87	114	189399	50.00	ug/l	0.00
63) Chlorobenzene-d5	10.12	117	189425	50.00	ug/l	0.00
72) 1,4-Dichlorobenzene-d4	12.09	152	103365	50.00	ug/l	0.00
System Monitoring Compounds						
33) 1,2-Dichloroethane-d4	6.08	65	74610	54.90	ug/l	0.00
Spiked Amount				50.000		
			Recovery	=	109.80%	
35) Dibromofluoromethane	5.51	113	58868	49.33	ug/l	0.00
Spiked Amount				50.000		
			Recovery	=	98.66%	
50) Toluene-d8	8.73	98	238056	48.16	ug/l	0.00
Spiked Amount				50.000		
			Recovery	=	96.32%	
62) 4-Bromofluorobenzene	11.15	95	83782	41.34	ug/l	0.00
Spiked Amount				50.000		
			Recovery	=	82.68%	
Target Compounds						
						Qvalue
4) Vinyl Chloride	1.41	62	16484	12.91	ug/l	99
12) 1,1-Dichloroethene	2.38	96	111473	98.78	ug/l	95
24) 1,1-Dichloroethane	3.71	63	68052	30.68	ug/l	99
27) cis-1,2-Dichloroethene	4.61	96	18514	15.74	ug/l	86
42) 1,2-Dichloroethane	6.21	62	3931	1.94	ug/l	97
49) 1,4-Dioxane	7.77	88	12042	327.12	ug/l	97

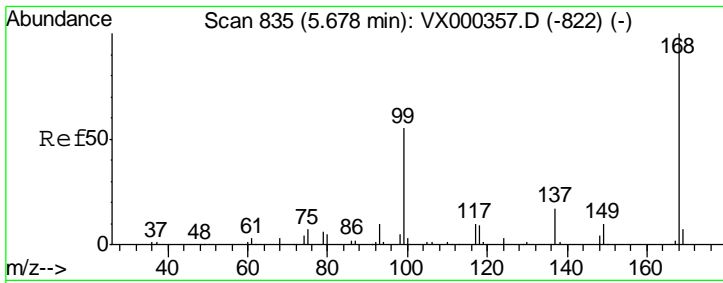
(#) = qualifier out of range (m) = manual integration (+) = signals summed

Data Path : W:\HPCHEM1\MSVOA X\DATA\VX032918\
 Data File : VX000548.D
 Acq On : 30 Mar 2018 07:17
 Operator : JC/MD
 Sample : J2127-02
 Misc : 5.0mL/MSVOA X/WATER
 ALS Vial : 46 Sample Multiplier: 1

Instrument :
 MSVOA_X
 Client Sampled :
 MW-2

Quant Time: Mar 30 08:50:29 2018
 Quant Method : W:\HPCHEM1\MSVOA_X\METHOD\82X032018W.M
 Quant Title : SW846 8260
 QLast Update : Wed Mar 21 04:52:42 2018
 Response via : Initial Calibration

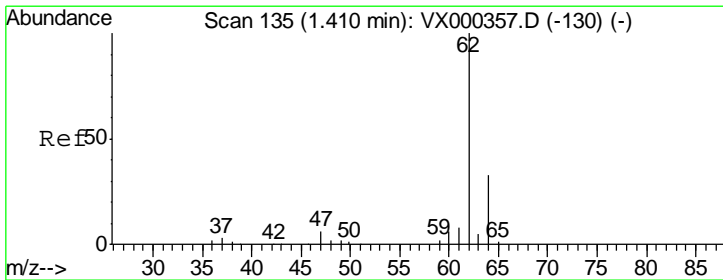
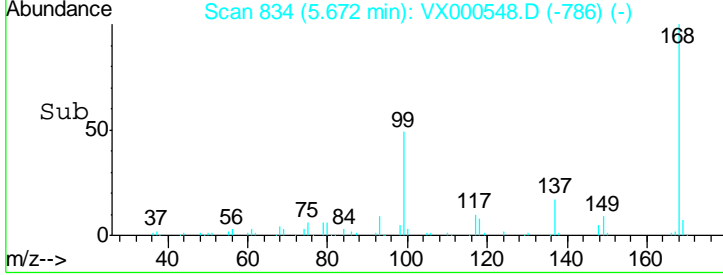
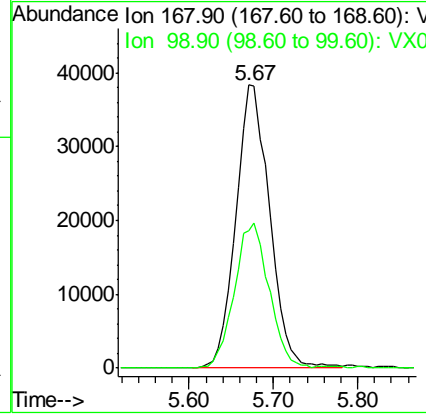
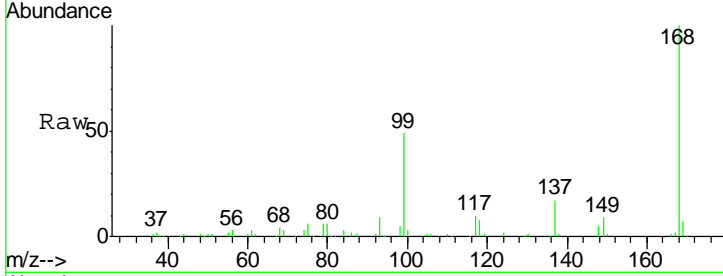




#1
 Pentafluorobenzene
 Concen: 50.00 ug/l
 RT: 5.67 min Scan# 834
 Delta R.T. -0.01 min
 Lab File: VX000548.D
 Acq: 30 Mar 2018 07:17

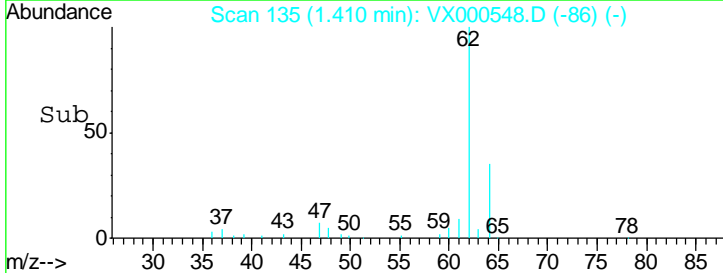
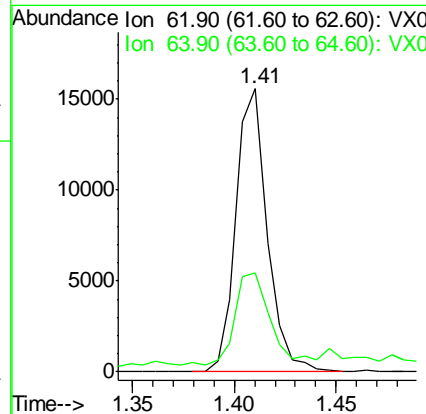
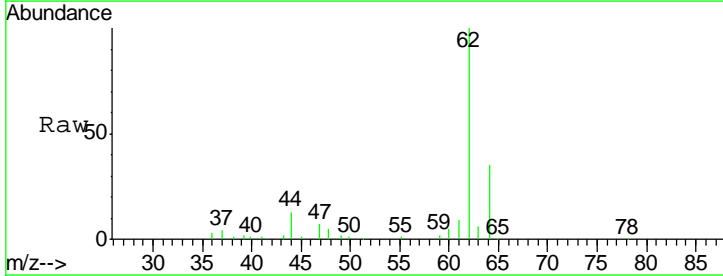
Instrument : MSVOA_X
 ClientSampled : MW-2

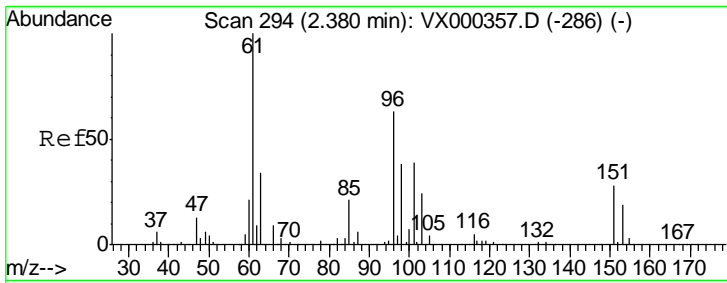
Tgt Ion	Resp	Lower	Upper
168	104112		
99	48.7	45.8	68.6



#4
 Vinyl Chloride
 Concen: 12.91 ug/l
 RT: 1.41 min Scan# 135
 Delta R.T. -0.00 min
 Lab File: VX000548.D
 Acq: 30 Mar 2018 07:17

Tgt Ion	Resp	Lower	Upper
62	16484		
64	31.8	24.8	37.2

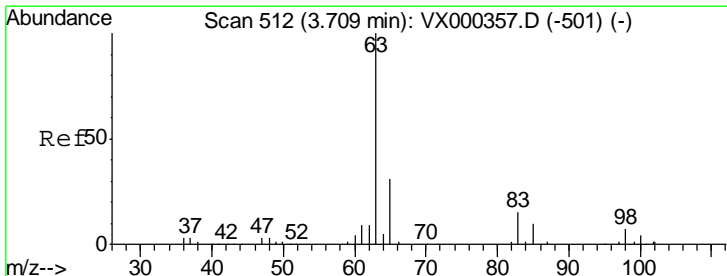
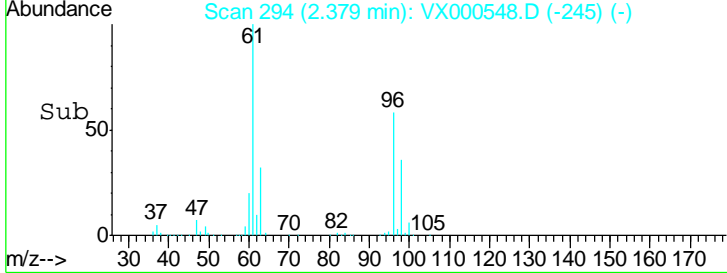
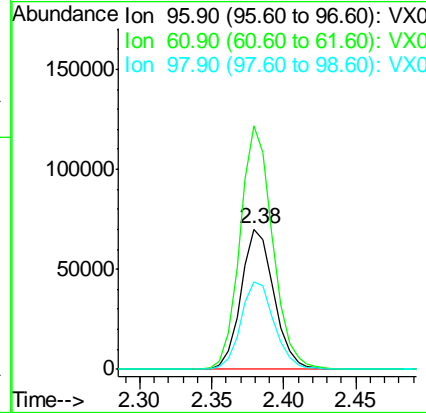
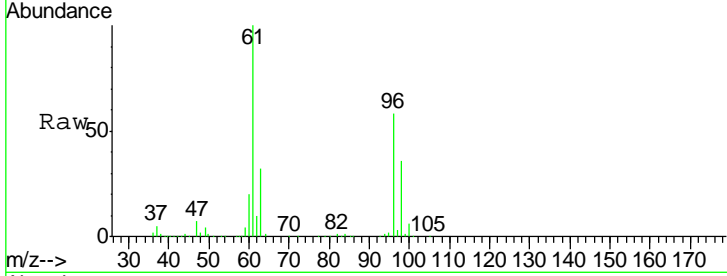




#12
 1,1-Dichloroethene
 Concen: 98.78 ug/l
 RT: 2.38 min Scan# 294
 Delta R.T. -0.00 min
 Lab File: VX000548.D
 Acq: 30 Mar 2018 07:17

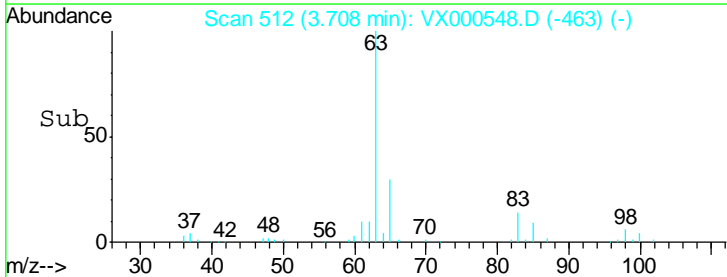
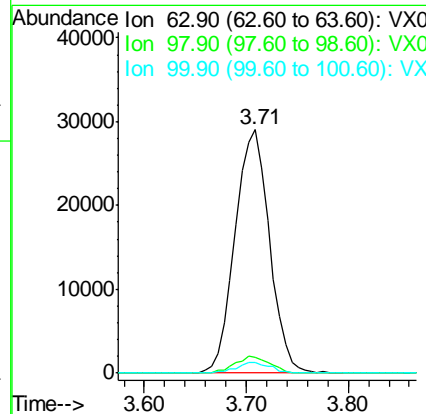
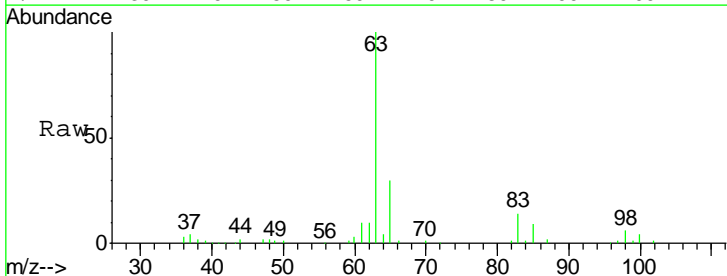
Instrument :
 MSVOA_X
 ClientSampled :
 MW-2

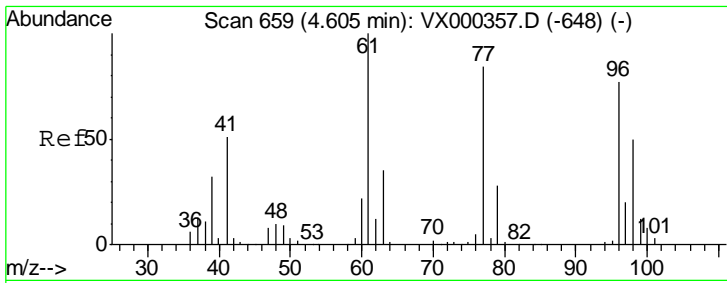
Tgt Ion	Resp	Lower	Upper
96	111473		
Ion Ratio			
96	100		
61	173.3	131.2	196.8
98	62.4	49.8	74.8



#24
 1,1-Dichloroethane
 Concen: 30.68 ug/l
 RT: 3.71 min Scan# 512
 Delta R.T. -0.00 min
 Lab File: VX000548.D
 Acq: 30 Mar 2018 07:17

Tgt Ion	Resp	Lower	Upper
63	68052		
Ion Ratio			
63	100		
98	6.4	3.3	9.9
100	4.3	2.0	5.8

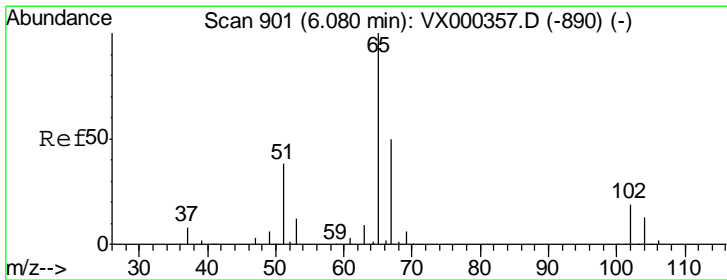
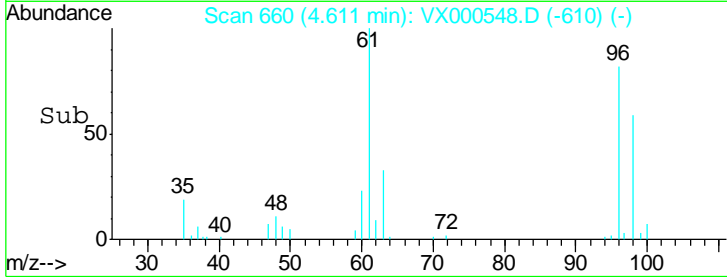
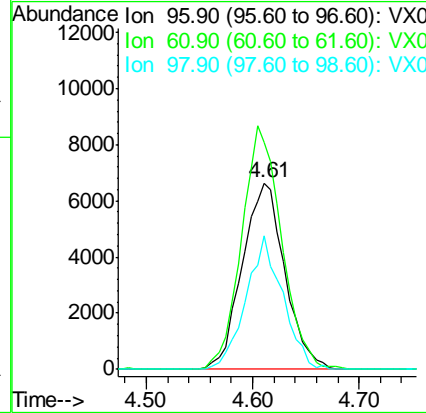
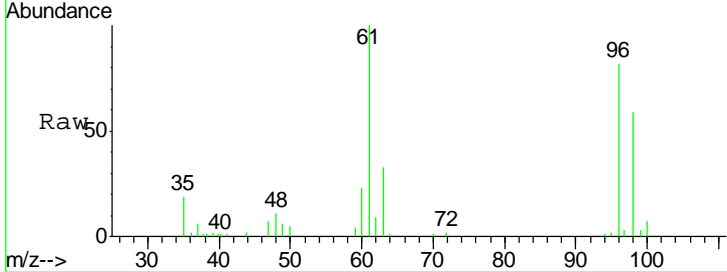




#27
 cis-1,2-Dichloroethene
 Concen: 15.74 ug/l
 RT: 4.61 min Scan# 660
 Delta R.T. 0.01 min
 Lab File: VX000548.D
 Acq: 30 Mar 2018 07:17

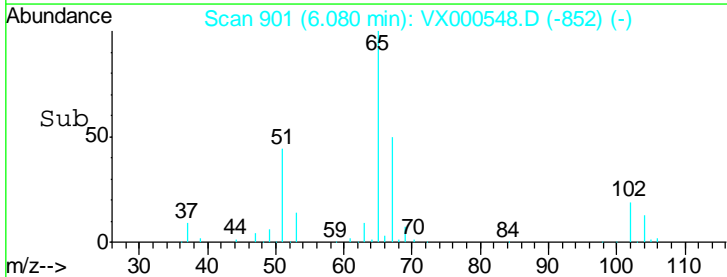
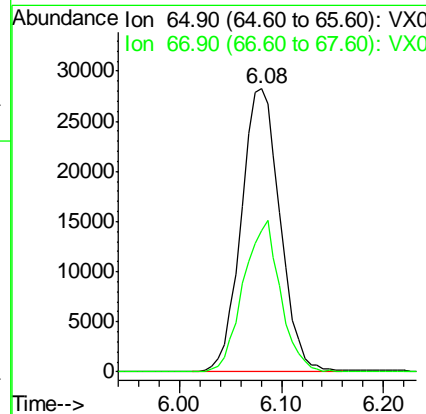
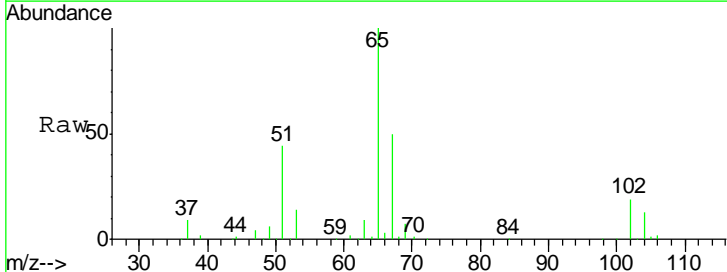
Instrument :
 MSVOA_X
ClientSampled :
 MW-2

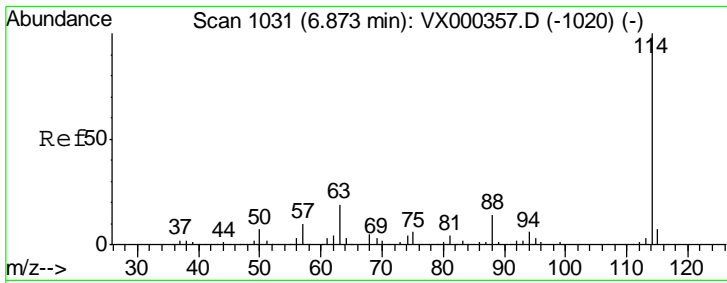
Tgt Ion	Resp	Lower	Upper
96	18514		
96	100		
61	123.4	0.0	291.6
98	62.2	0.0	132.0



#33
 1,2-Dichloroethane-d4
 Concen: 54.90 ug/l
 RT: 6.08 min Scan# 901
 Delta R.T. 0.00 min
 Lab File: VX000548.D
 Acq: 30 Mar 2018 07:17

Tgt Ion	Resp	Lower	Upper
65	74610		
65	100		
67	51.1	0.0	103.2

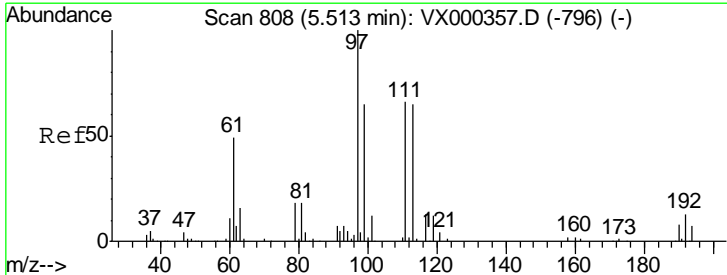
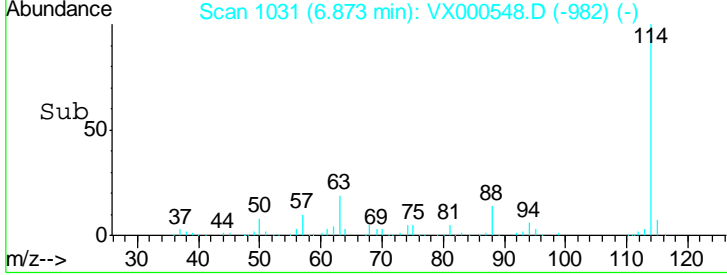
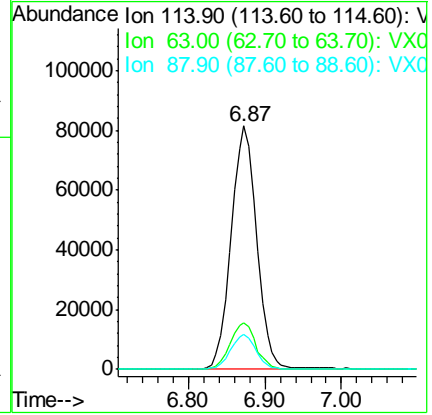
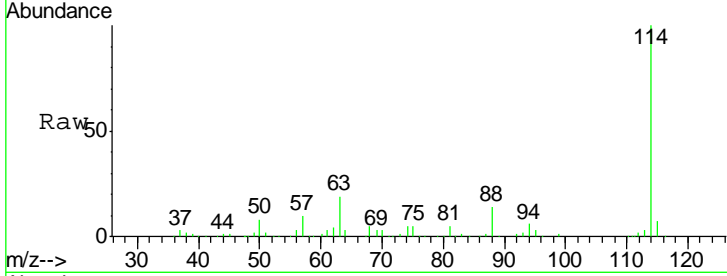




#34
 1,4-Difluorobenzene
 Concen: 50.00 ug/l
 RT: 6.87 min Scan# 1031
 Delta R.T. -0.00 min
 Lab File: VX000548.D
 Acq: 30 Mar 2018 07:17

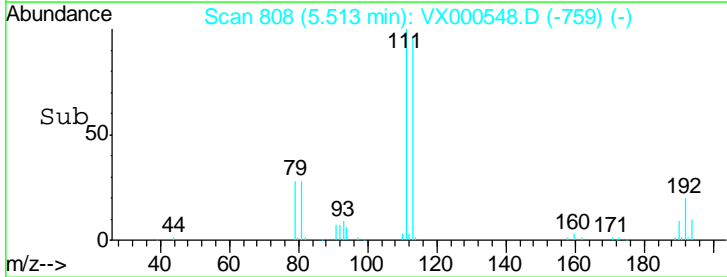
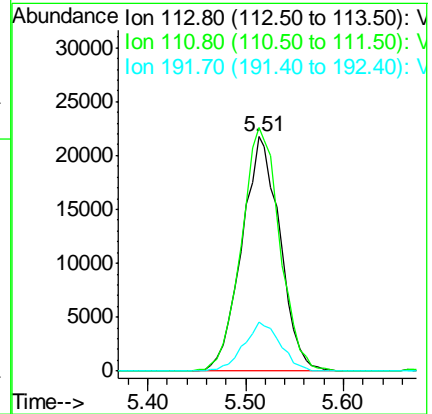
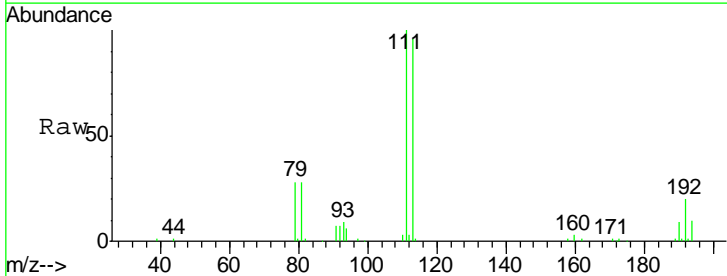
Instrument : MSVOA_X
 ClientSampled : MW-2

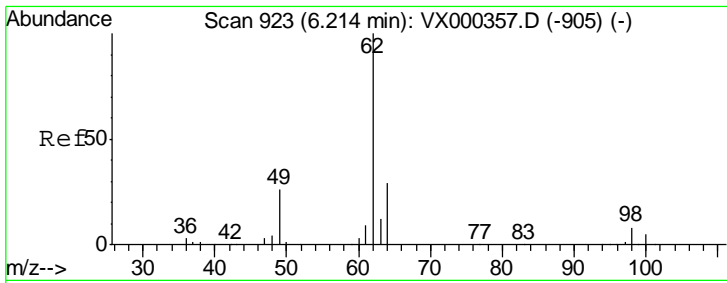
Tgt Ion	Resp	Lower	Upper
114	189399		
63	18.8	0.0	38.4
88	14.4	0.0	27.0



#35
 Dibromofluoromethane
 Concen: 49.33 ug/l
 RT: 5.51 min Scan# 808
 Delta R.T. -0.00 min
 Lab File: VX000548.D
 Acq: 30 Mar 2018 07:17

Tgt Ion	Resp	Lower	Upper
113	58868		
111	104.6	82.4	123.6
192	20.0	15.8	23.6

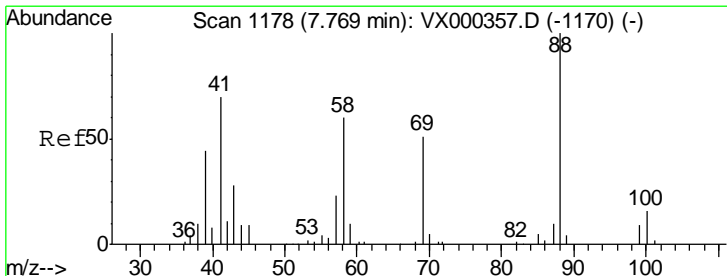
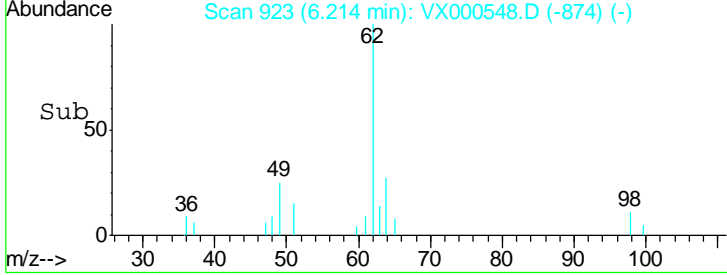
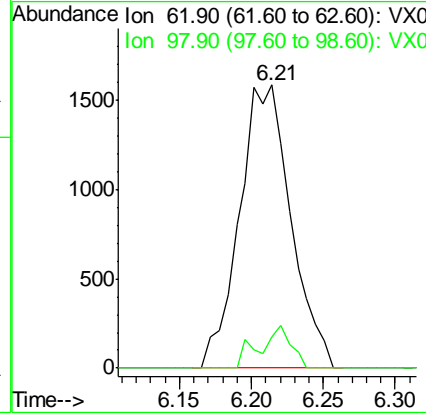
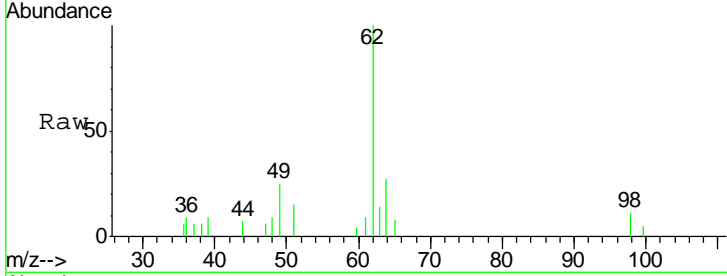




#42
 1,2-Dichloroethane
 Concen: 1.94 ug/l
 RT: 6.21 min Scan# 923
 Delta R.T. -0.00 min
 Lab File: VX000548.D
 Acq: 30 Mar 2018 07:17

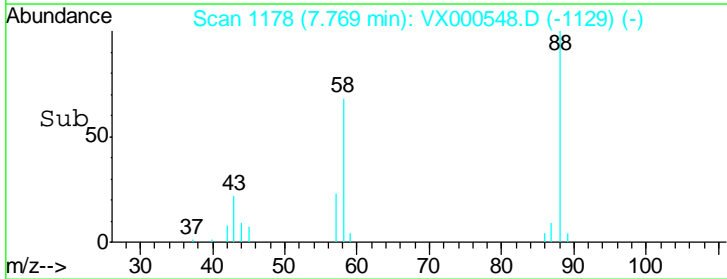
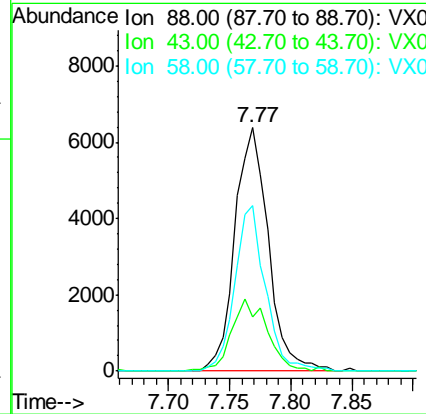
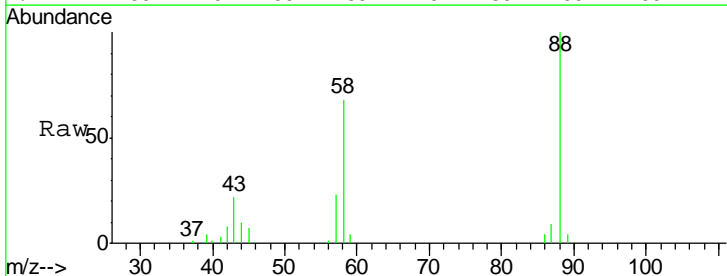
Instrument : MSVOA_X
 ClientSampled : MW-2

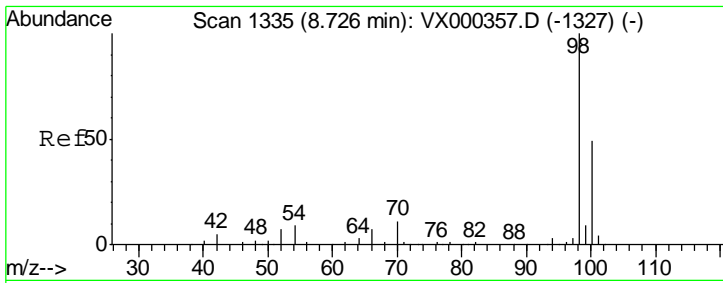
Tgt Ion	Resp	Lower	Upper
62	100		
98	9.0	0.0	15.8



#49
 1,4-Dioxane
 Concen: 327.12 ug/l
 RT: 7.77 min Scan# 1178
 Delta R.T. -0.00 min
 Lab File: VX000548.D
 Acq: 30 Mar 2018 07:17

Tgt Ion	Resp	Lower	Upper
88	100		
43	31.7	26.8	40.2
58	62.6	52.2	78.2

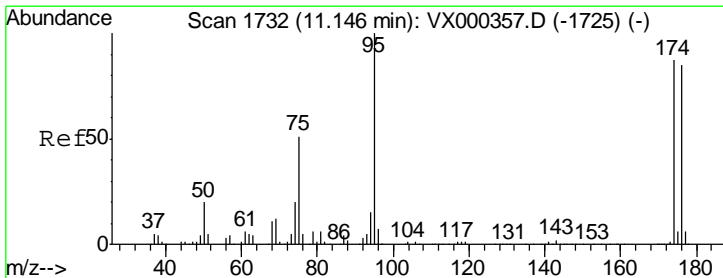
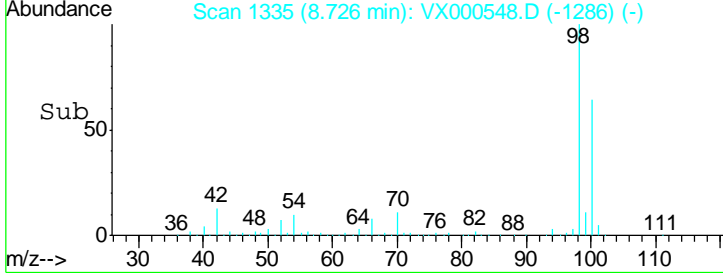
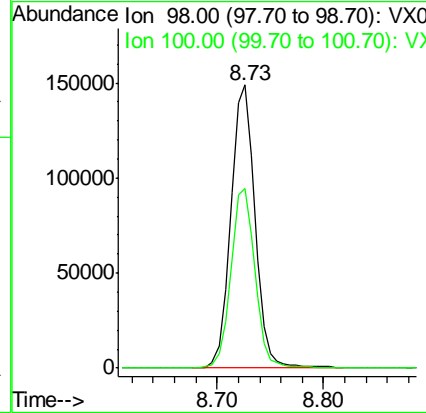
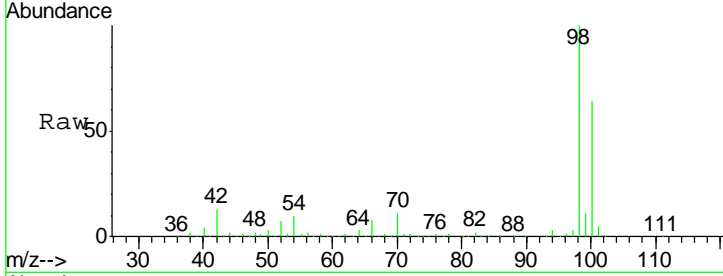




#50
 Toluene-d8
 Concen: 48.16 ug/l
 RT: 8.73 min Scan# 1335
 Delta R.T. -0.00 min
 Lab File: VX000548.D
 Acq: 30 Mar 2018 07:17

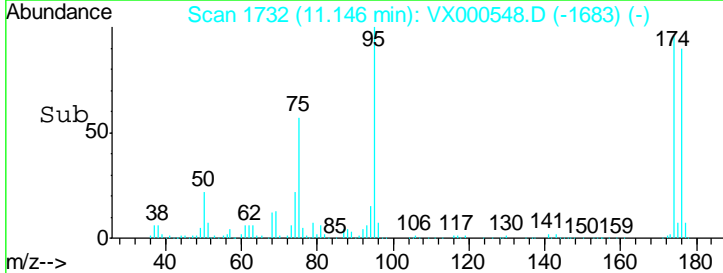
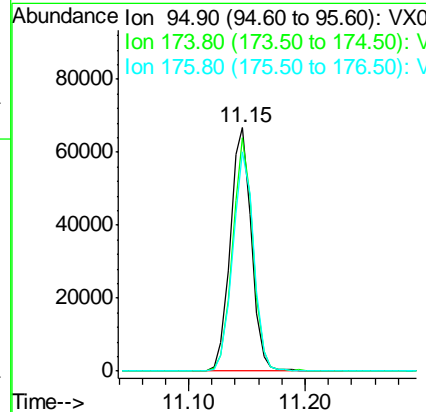
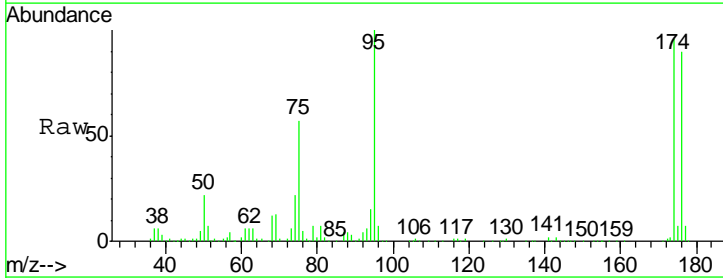
Instrument :
 MSVOA_X
 ClientSampled :
 MW-2

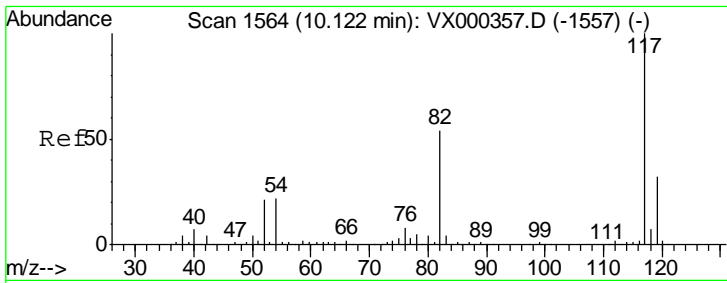
Tgt Ion	Resp	Lower	Upper
98	238056		
100	63.4	51.2	76.8



#62
 4-Bromofluorobenzene
 Concen: 41.34 ug/l
 RT: 11.15 min Scan# 1732
 Delta R.T. 0.00 min
 Lab File: VX000548.D
 Acq: 30 Mar 2018 07:17

Tgt Ion	Resp	Lower	Upper
95	83782		
174	92.6	0.0	173.6
176	89.7	0.0	164.6

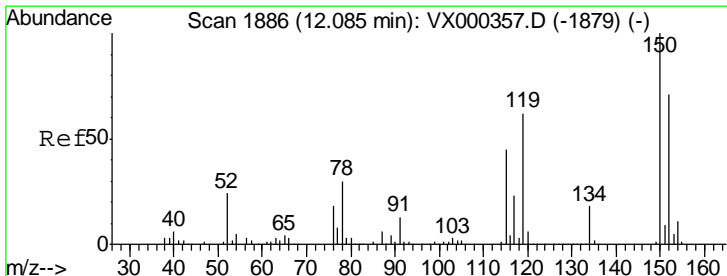
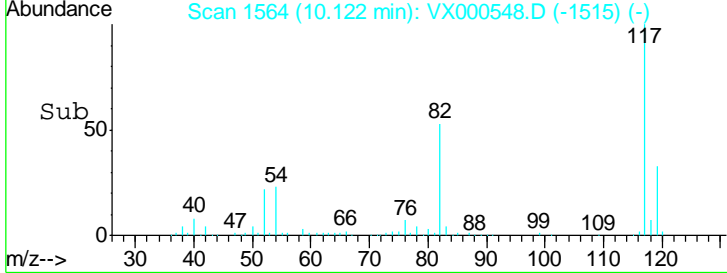
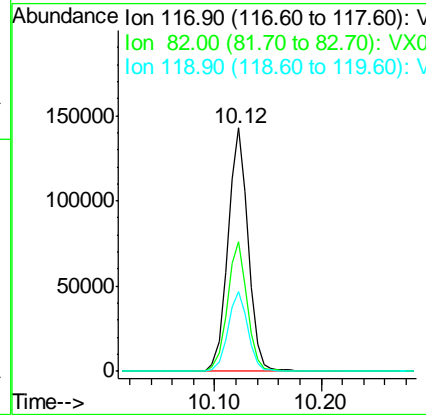
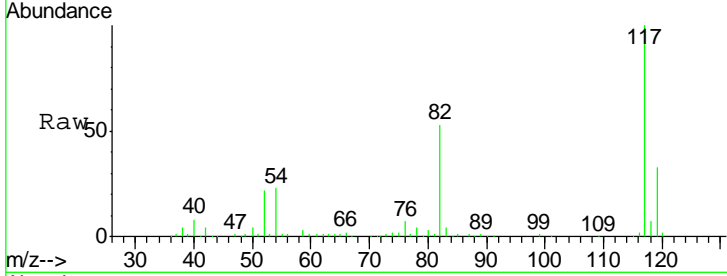




#63
 Chlorobenzene-d5
 Concen: 50.00 ug/l
 RT: 10.12 min Scan# 1564
 Delta R.T. -0.00 min
 Lab File: VX000548.D
 Acq: 30 Mar 2018 07:17

Instrument : MSVOA_X
 ClientSampled : MW-2

Tgt Ion	Resp	Lower	Upper
117	189425		
82	53.3	43.8	65.8
119	32.5	24.9	37.3



#72
 1,4-Dichlorobenzene-d4
 Concen: 50.00 ug/l
 RT: 12.09 min Scan# 1886
 Delta R.T. -0.00 min
 Lab File: VX000548.D
 Acq: 30 Mar 2018 07:17

Tgt Ion	Resp	Lower	Upper
152	103365		
115	55.5	39.8	119.3
150	155.2	0.0	344.4

