

Data Path : W:\HPCHEM1\MSVOA_X\DATA\VX040318\
 Data File : VX000653.D
 Acq On : 03 Apr 2018 14:43
 Operator : JC/MD
 Sample : J2185-17 5X
 Misc : 5.0mL/MSVOA_X/WATER
 ALS Vial : 7 Sample Multiplier: 1

Instrument :
 MSVOA_X
ClientSampleId :
 LOWER-CONCRETE-SLAB-2

Quant Time: Apr 04 03:01:32 2018
 Quant Method : W:\HPCHEM1\MSVOA_X\METHOD\82X032018W.M
 Quant Title : SW846 8260
 QLast Update : Wed Mar 21 04:52:42 2018
 Response via : Initial Calibration

Internal Standards	R.T.	QIon	Response	Conc	Units	Dev(Min)
1) Pentafluorobenzene	5.67	168	124430	50.00	ug/l	0.00
34) 1,4-Difluorobenzene	6.87	114	207226	50.00	ug/l	0.00
63) Chlorobenzene-d5	10.12	117	207717	50.00	ug/l	0.00
72) 1,4-Dichlorobenzene-d4	12.09	152	112031	50.00	ug/l	0.00

System Monitoring Compounds	R.T.	QIon	Response	Conc	Units	Dev(Min)
33) 1,2-Dichloroethane-d4	6.08	65	79345	48.85	ug/l	0.00
Spiked Amount				50.000		
Recovery				=	97.70%	
35) Dibromofluoromethane	5.51	113	60505	46.34	ug/l	0.00
Spiked Amount				50.000		
Recovery				=	92.68%	
50) Toluene-d8	8.72	98	261699	48.39	ug/l	0.00
Spiked Amount				50.000		
Recovery				=	96.78%	
62) 4-Bromofluorobenzene	11.15	95	91177	41.15	ug/l	0.00
Spiked Amount				50.000		
Recovery				=	82.30%	

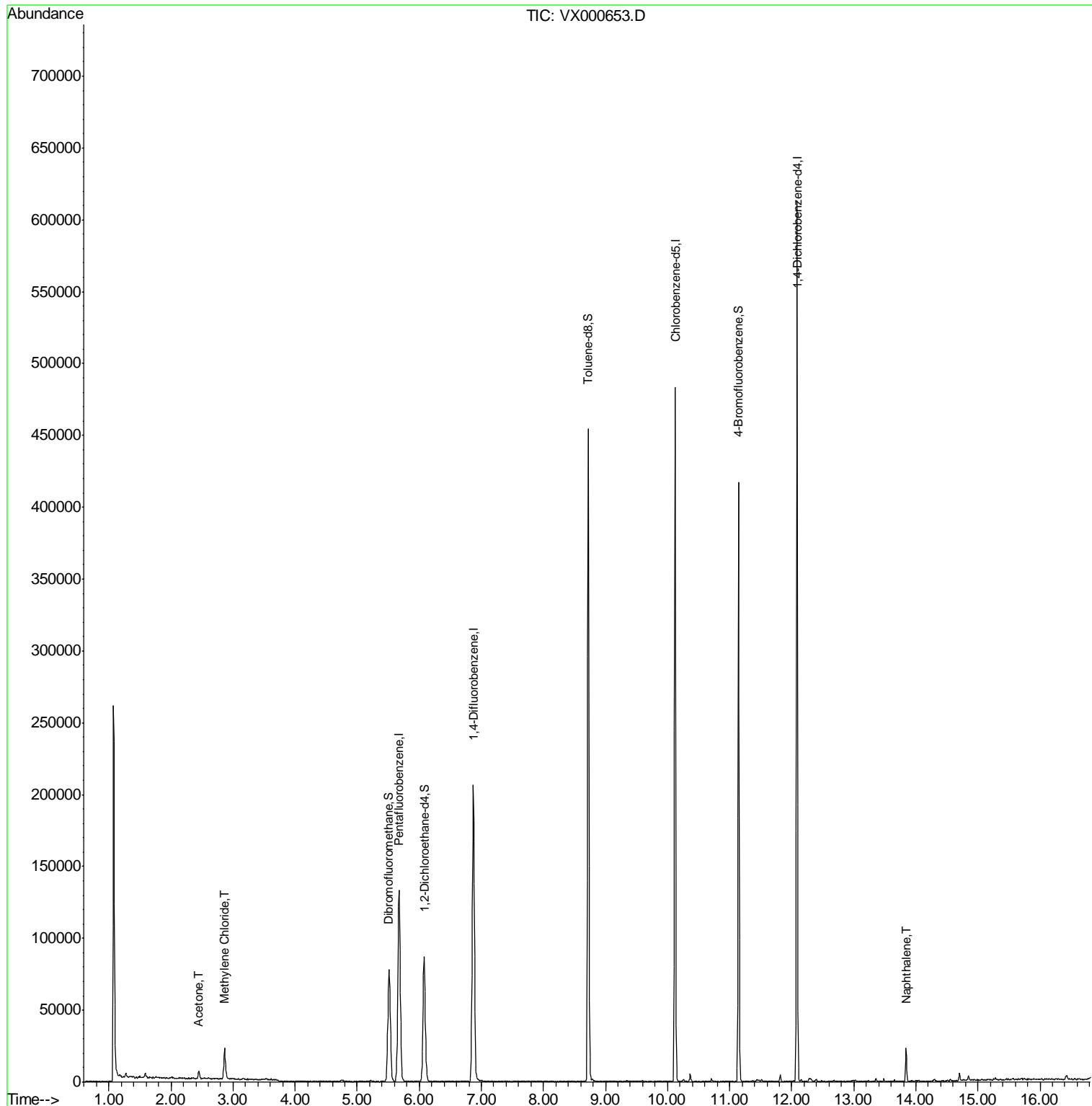
Target Compounds	R.T.	QIon	Response	Conc	Units	Qvalue
16) Acetone	2.45	43	5529	4.092	ug/l	96
20) Methylene Chloride	2.87	84	8714	5.584	ug/l #	83
95) Naphthalene	13.84	128	12583	1.375	ug/l	98

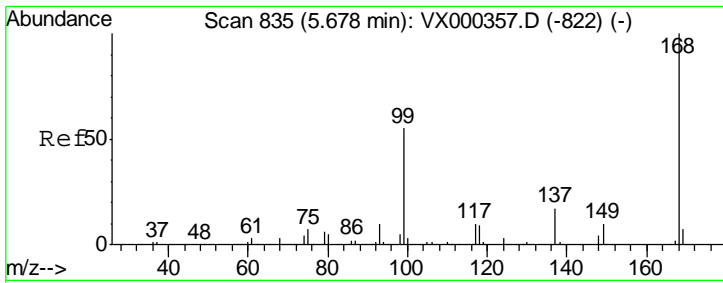
(#) = qualifier out of range (m) = manual integration (+) = signals summed

Data Path : W:\HPCHEM1\MSVOA_X\DATA\VX040318\
 Data File : VX000653.D
 Acq On : 03 Apr 2018 14:43
 Operator : JC/MD
 Sample : J2185-17 5X
 Misc : 5.0mL/MSVOA_X/WATER
 ALS Vial : 7 Sample Multiplier: 1

Instrument :
 MSVOA_X
ClientSampled :
 LOWER-CONCRETE-SLAB-2

Quant Time: Apr 04 03:01:32 2018
 Quant Method : W:\HPCHEM1\MSVOA_X\METHOD\82X032018W.M
 Quant Title : SW846 8260
 QLast Update : Wed Mar 21 04:52:42 2018
 Response via : Initial Calibration

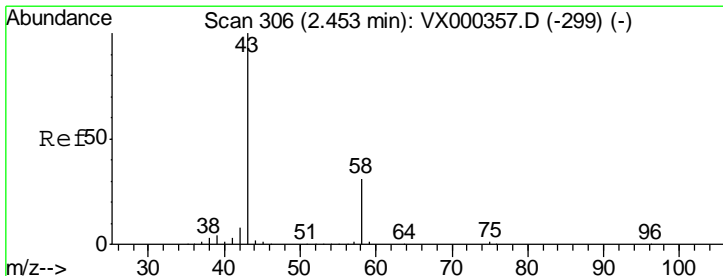
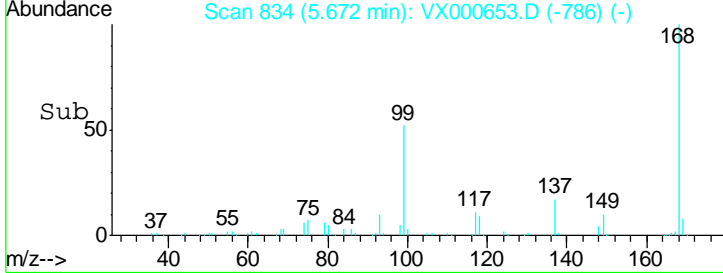
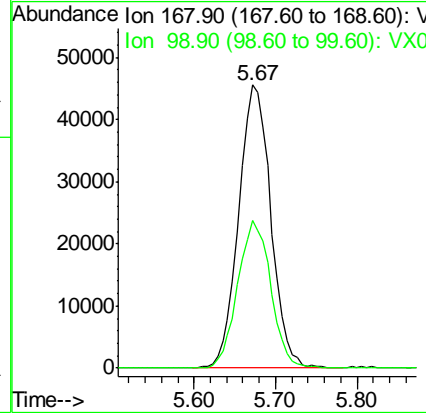
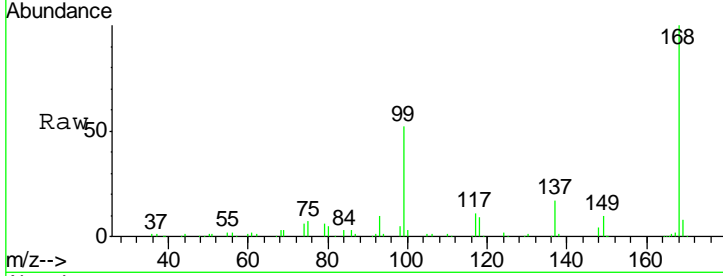




#1
 Pentafluorobenzene
 Concen: 50.000 ug/l
 RT: 5.67 min Scan# 834
 Delta R.T. -0.01 min
 Lab File: VX000653.D
 Acq: 03 Apr 2018 14:43

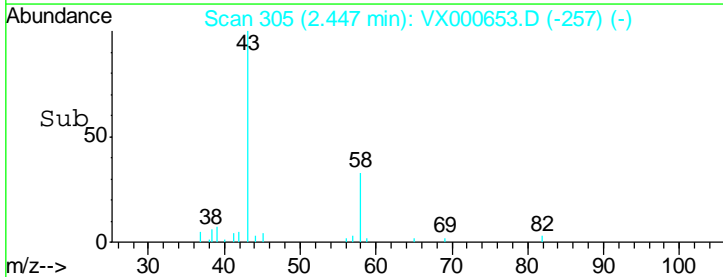
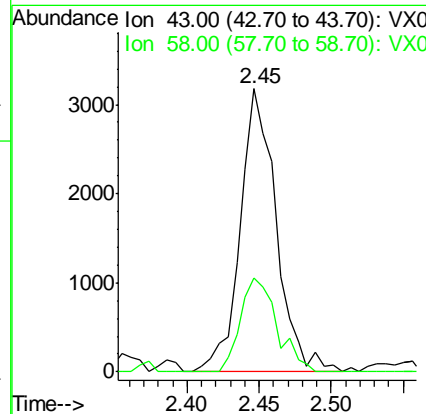
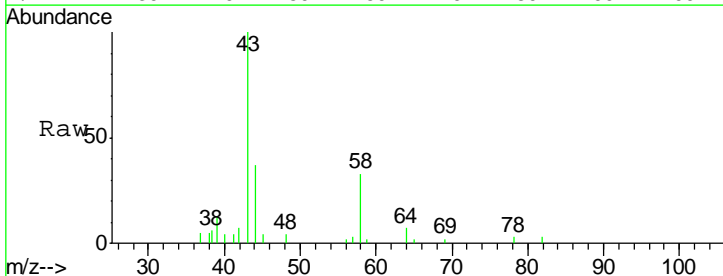
Instrument :
 MSVOA_X
ClientSampled :
 LOWER-CONCRETE-SLAB-2

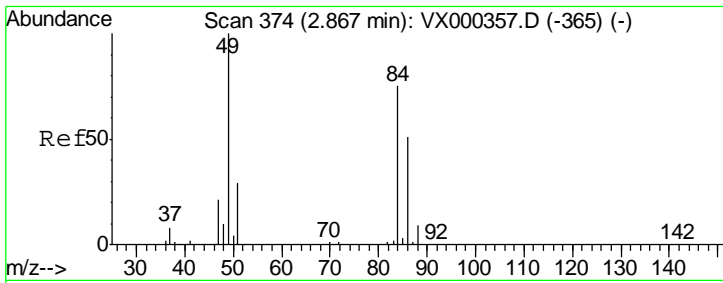
Tgt Ion: 168 Resp: 124430
 Ion Ratio Lower Upper
 168 100
 99 52.4 45.8 68.6



#16
 Acetone
 Concen: 4.092 ug/l
 RT: 2.45 min Scan# 305
 Delta R.T. -0.01 min
 Lab File: VX000653.D
 Acq: 03 Apr 2018 14:43

Tgt Ion: 43 Resp: 5529
 Ion Ratio Lower Upper
 43 100
 58 33.4 24.7 37.1

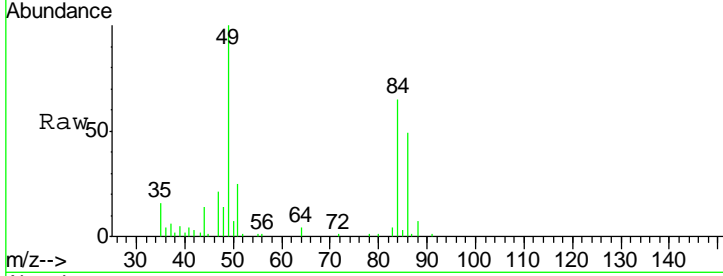




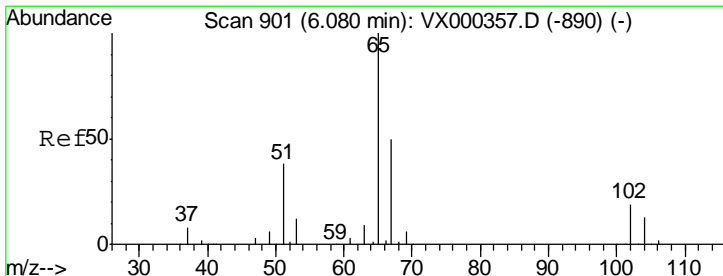
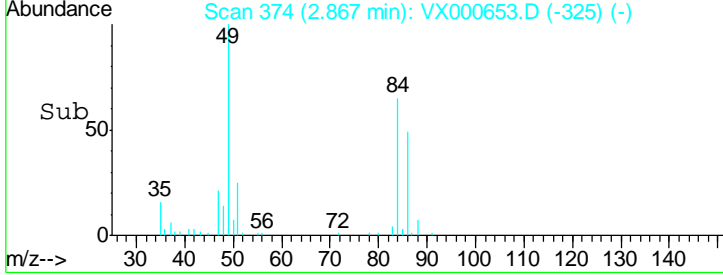
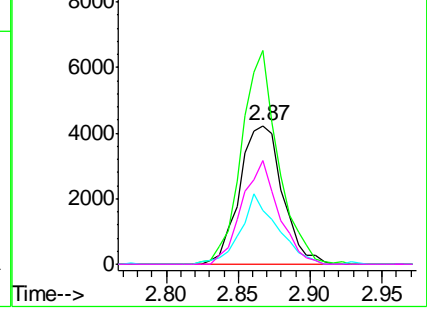
#20
 Methylene Chloride
 Concen: 5.584 ug/l
 RT: 2.87 min Scan# 374
 Delta R.T. -0.00 min
 Lab File: VX000653.D
 Acq: 03 Apr 2018 14:43

Instrument :
 MSVOA_X
ClientSampled :
 LOWER-CONCRETE-SLAB-2

Tgt Ion	Resp	Lower	Upper
84	8714		
49	154.3	100.6	151.0
51	38.7	31.6	47.4
86	75.1	52.6	78.8

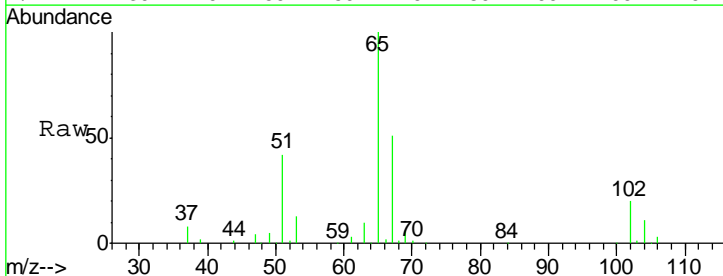


Abundance Ion 83.90 (83.60 to 84.60): VX0
 Ion 48.90 (48.60 to 49.60): VX0
 Ion 50.90 (50.60 to 51.60): VX0
 Ion 85.90 (85.60 to 86.60): VX0

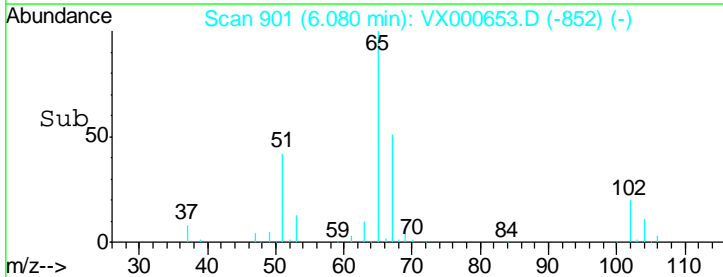
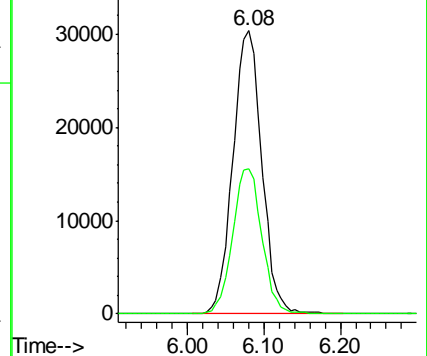


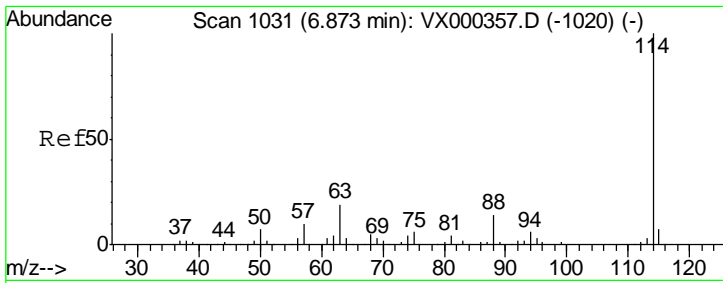
#33
 1,2-Dichloroethane-d4
 Concen: 48.850 ug/l
 RT: 6.08 min Scan# 901
 Delta R.T. 0.00 min
 Lab File: VX000653.D
 Acq: 03 Apr 2018 14:43

Tgt Ion	Resp	Lower	Upper
65	79345		
67	52.0	0.0	103.2



Abundance Ion 64.90 (64.60 to 65.60): VX0
 Ion 66.90 (66.60 to 67.60): VX0

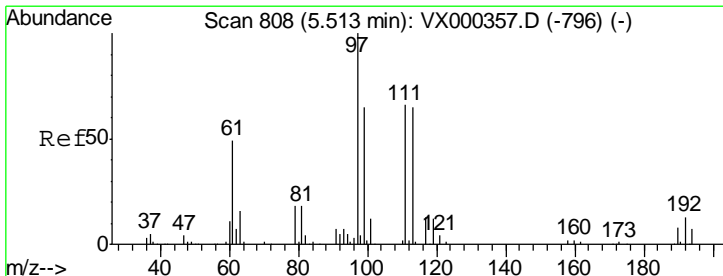
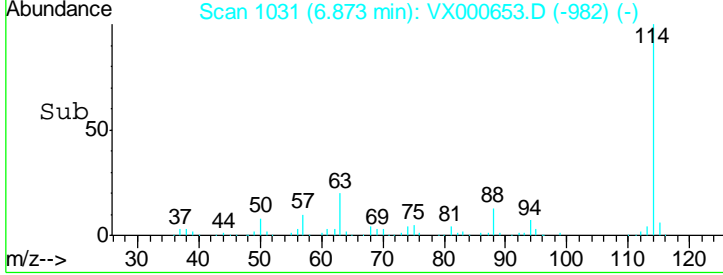
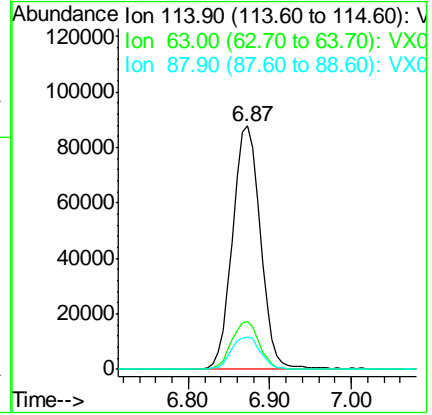
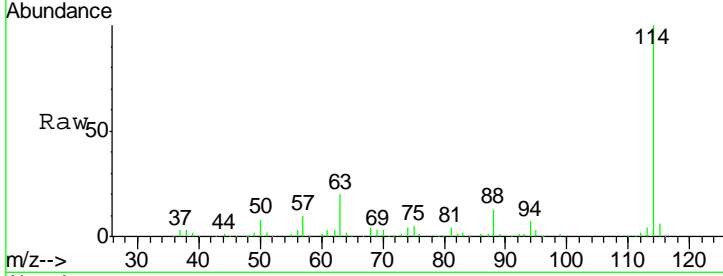




#34
 1,4-Difluorobenzene
 Concen: 50.000 ug/l
 RT: 6.87 min Scan# 1031
 Delta R.T. -0.00 min
 Lab File: VX000653.D
 Acq: 03 Apr 2018 14:43

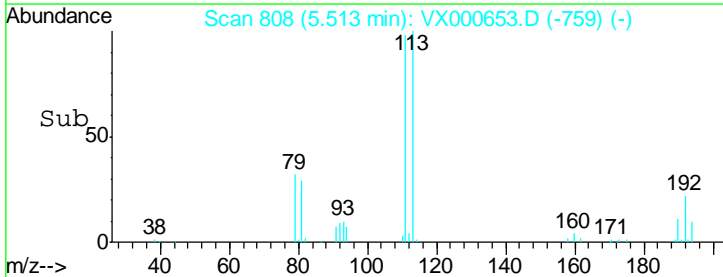
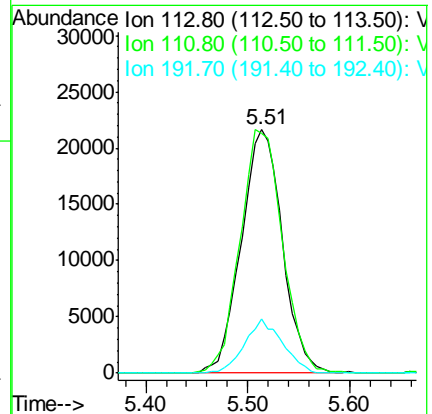
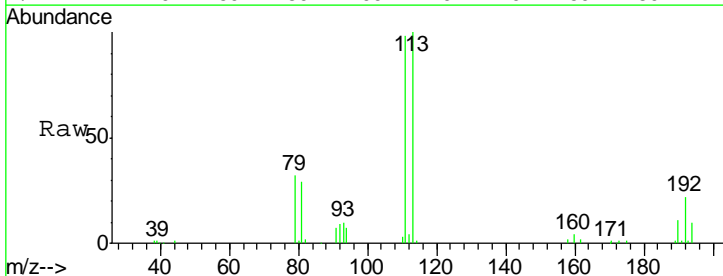
Instrument :
 MSVOA_X
ClientSampled :
 LOWER-CONCRETE-SLAB-2

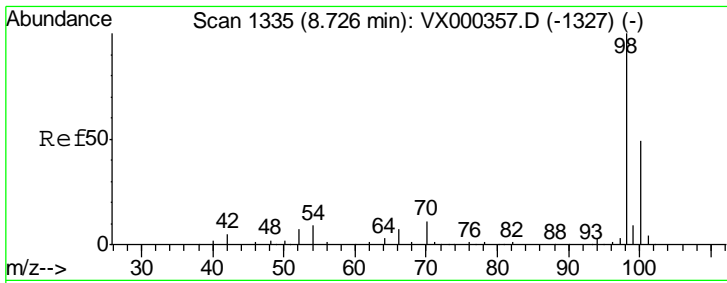
Tgt Ion	Resp	Lower	Upper
114	100		
63	19.8	0.0	38.4
88	13.2	0.0	27.0



#35
 Dibromofluoromethane
 Concen: 46.339 ug/l
 RT: 5.51 min Scan# 808
 Delta R.T. -0.00 min
 Lab File: VX000653.D
 Acq: 03 Apr 2018 14:43

Tgt Ion	Resp	Lower	Upper
113	100		
111	102.9	82.4	123.6
192	20.5	15.8	23.6

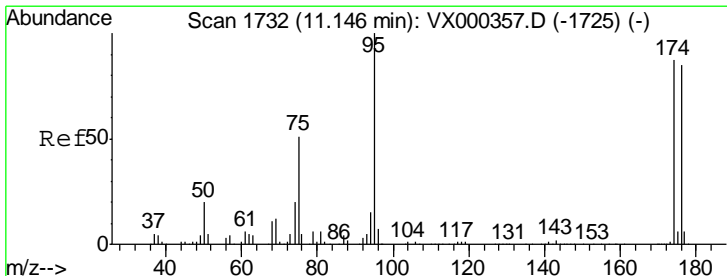
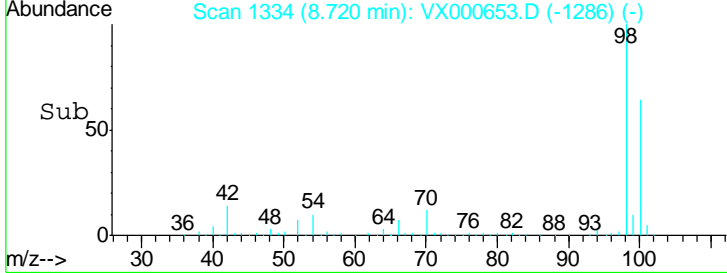
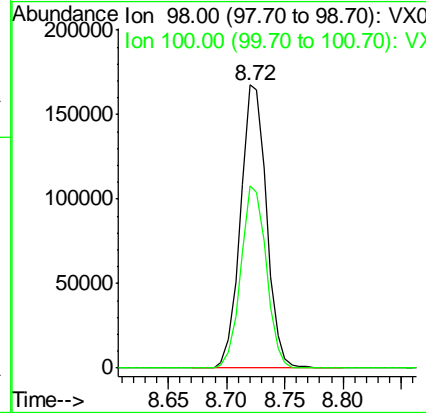
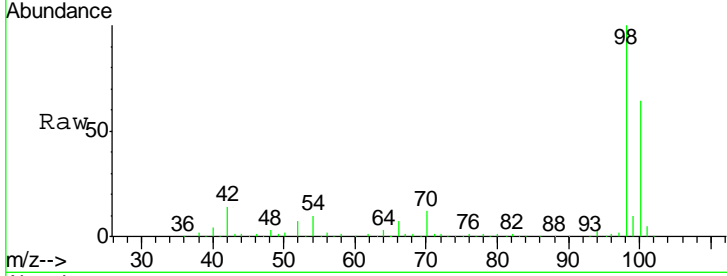




#50
 Toluene-d8
 Concen: 48.393 ug/l
 RT: 8.72 min Scan# 1334
 Delta R.T. -0.01 min
 Lab File: VX000653.D
 Acq: 03 Apr 2018 14:43

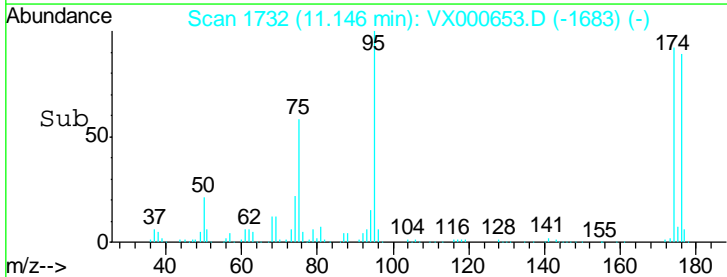
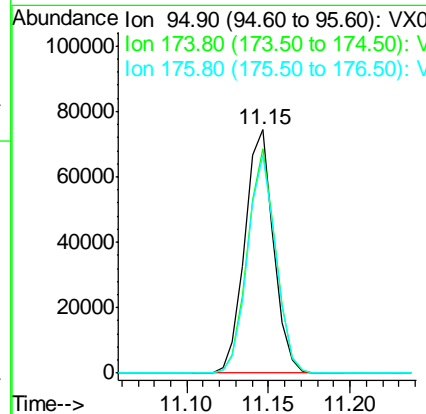
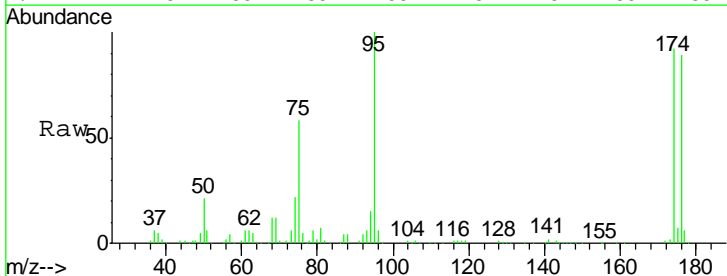
Instrument :
 MSVOA_X
ClientSampled :
 LOWER-CONCRETE-SLAB-2

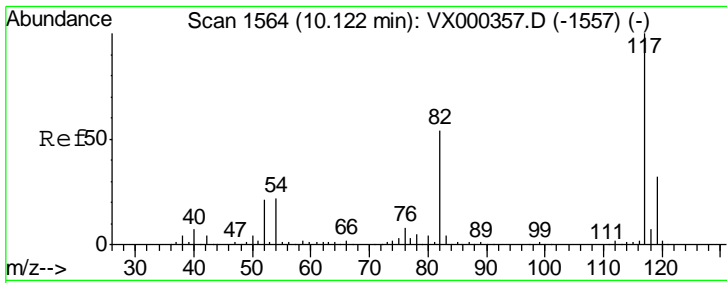
Tgt Ion: 98 Resp: 261699
 Ion Ratio Lower Upper
 98 100
 100 62.9 51.2 76.8



#62
 4-Bromofluorobenzene
 Concen: 41.148 ug/l
 RT: 11.15 min Scan# 1732
 Delta R.T. 0.00 min
 Lab File: VX000653.D
 Acq: 03 Apr 2018 14:43

Tgt Ion: 95 Resp: 91177
 Ion Ratio Lower Upper
 95 100
 174 90.8 0.0 173.6
 176 88.4 0.0 164.6

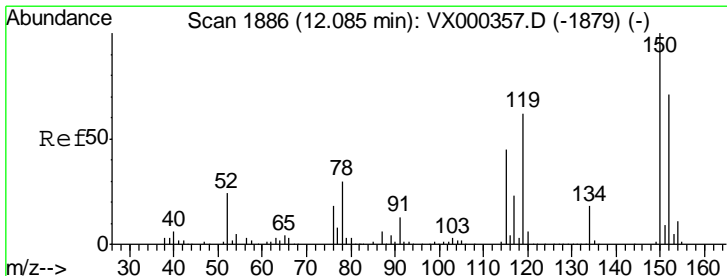
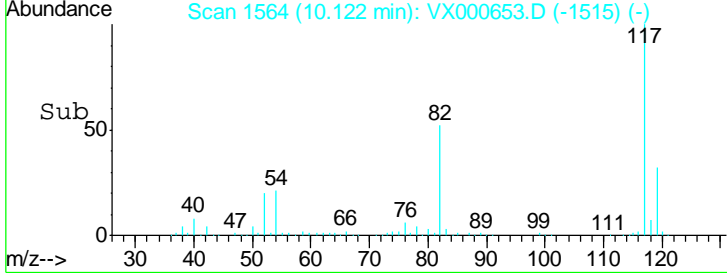
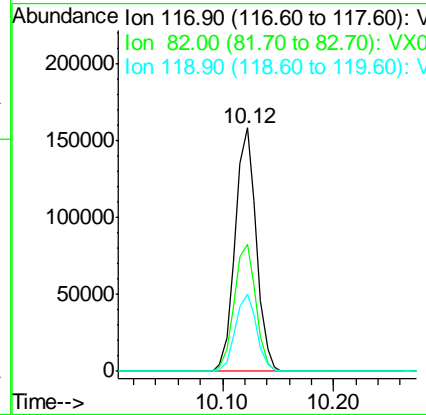
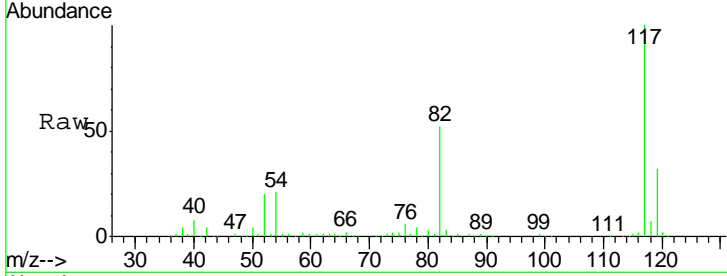




#63
 Chlorobenzene-d5
 Concen: 50.000 ug/l
 RT: 10.12 min Scan# 1564
 Delta R.T. -0.00 min
 Lab File: VX000653.D
 Acq: 03 Apr 2018 14:43

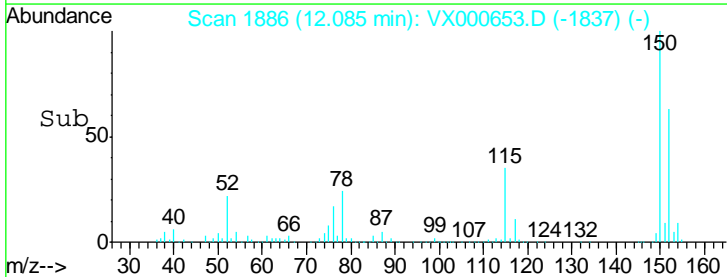
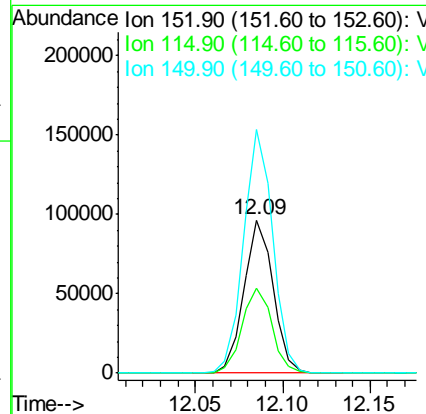
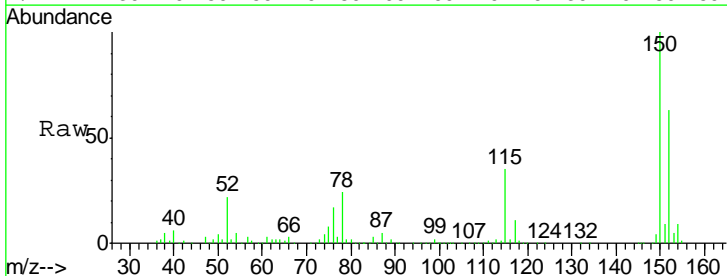
Instrument : MSVOA_X
 ClientSampled : LOWER-CONCRETE-SLAB-2

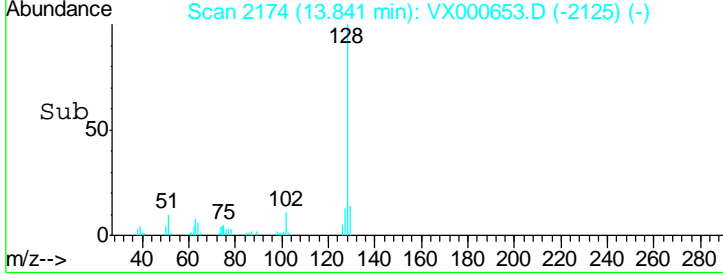
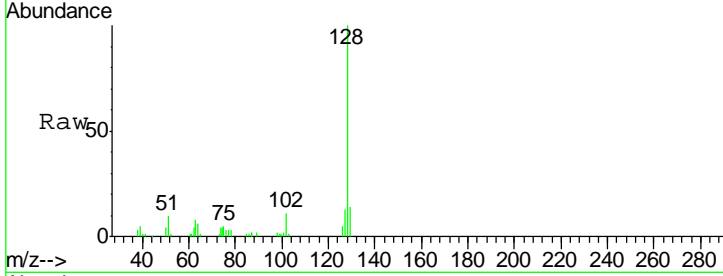
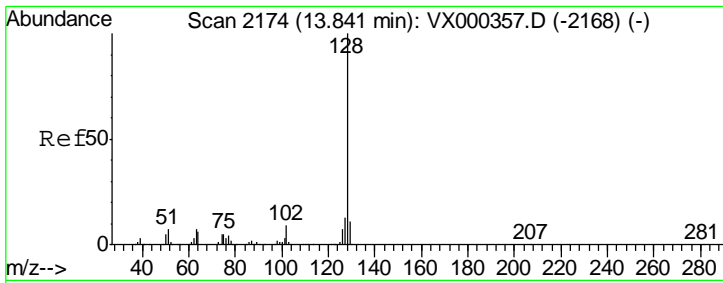
Tgt Ion	Resp	Lower	Upper
117	207717		
82	52.0	43.8	65.8
119	31.7	24.9	37.3



#72
 1,4-Dichlorobenzene-d4
 Concen: 50.000 ug/l
 RT: 12.09 min Scan# 1886
 Delta R.T. -0.00 min
 Lab File: VX000653.D
 Acq: 03 Apr 2018 14:43

Tgt Ion	Resp	Lower	Upper
152	112031		
115	56.6	39.8	119.3
150	158.1	0.0	344.4





#95
 Naphthalene
 Concen: 1.375 ug/l
 RT: 13.84 min Scan# 2174
 Delta R.T. -0.00 min
 Lab File: VX000653.D
 Acq: 03 Apr 2018 14:43

Instrument : MSVOA_X
 ClientSampled : LOWER-CONCRETE-SLAB-2

Tgt Ion	Resp	Lower	Upper
128	12583		
127	12.2	10.6	15.8
129	11.9	8.9	13.3

