

Data Path : W:\HPCHEM1\MSVOA\_X\DATA\VX041218\  
 Data File : VX000800.D  
 Acq On : 12 Apr 2018 14:24  
 Operator : JC/MD  
 Sample : J2307-06 5X  
 Misc : 5.0mL/MSVOA\_X/WATER  
 ALS Vial : 8 Sample Multiplier: 1

Instrument :  
 MSVOA\_X  
 ClientSampleId :  
 WC-PH3-SZ-03

Quant Time: Apr 13 06:53:55 2018  
 Quant Method : W:\HPCHEM1\MSVOA\_X\METHOD\82X041018W.M  
 Quant Title : SW846 8260  
 QLast Update : Tue Apr 10 15:49:28 2018  
 Response via : Initial Calibration

Internal Standards	R.T.	QIon	Response	Conc	Units	Dev(Min)
1) Pentafluorobenzene	5.67	168	279223	50.00	ug/l	0.00
34) 1,4-Difluorobenzene	6.87	114	364557	50.00	ug/l	0.00
63) Chlorobenzene-d5	10.12	117	329439	50.00	ug/l	0.00
72) 1,4-Dichlorobenzene-d4	12.09	152	205582	50.00	ug/l	0.00

System Monitoring Compounds

33) 1,2-Dichloroethane-d4	6.08	65	159250	45.23	ug/l	0.00
Spiked Amount	50.000		Recovery	=	90.46%	
35) Dibromofluoromethane	5.51	113	131983	46.99	ug/l	0.00
Spiked Amount	50.000		Recovery	=	93.98%	
50) Toluene-d8	8.72	98	501631	47.97	ug/l	0.00
Spiked Amount	50.000		Recovery	=	95.94%	
62) 4-Bromofluorobenzene	11.15	95	192272	44.44	ug/l	0.00
Spiked Amount	50.000		Recovery	=	88.88%	

Target Compounds

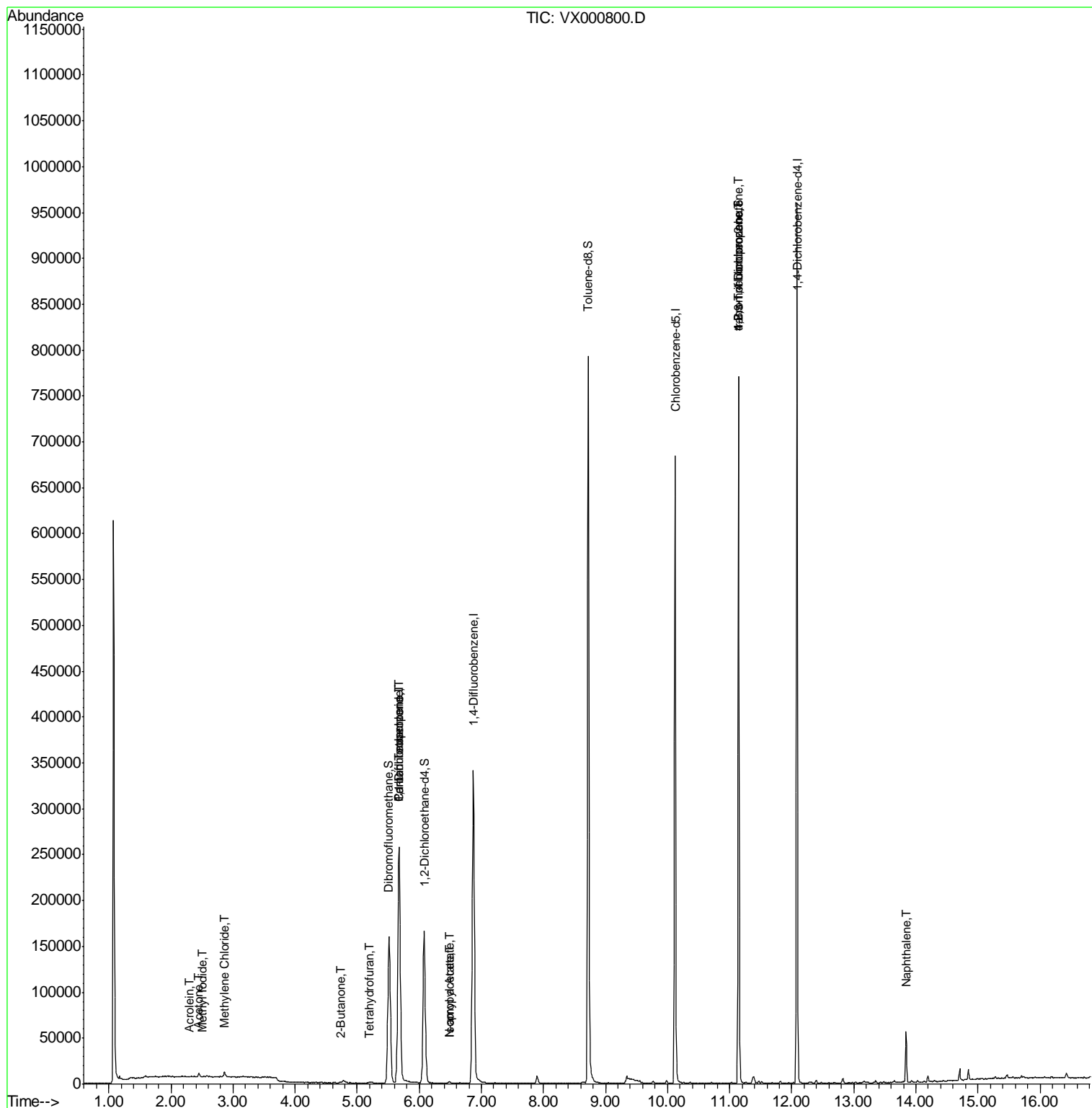
						Qvalue
5) Bromomethane	1.66	94	460	Below Cal	#	52
10) Methyl Iodide	2.51	142	341	8.37	ug/l #	58
13) Acrolein	2.29	56	74	0.24	ug/l #	23
16) Acetone	2.45	43	4045	3.33	ug/l	99
20) Methylene Chloride	2.86	84	2565	0.91	ug/l	95
25) 2-Butanone	4.73	43	611	0.30	ug/l #	50
29) Tetrahydrofuran	5.18	42	545	0.43	ug/l #	57
36) 1,1-Dichloropropene	5.67	75	16863	4.20	ug/l #	49
38) Carbon Tetrachloride	5.67	117	23699	5.27	ug/l #	15
43) Isopropyl Acetate	6.48	43	2060	0.31	ug/l #	95
74) N-amyl acetate	6.48	43	2060	0.35	ug/l #	98
76) 1,2,3-Trichloropropane	11.15	75	93078	26.25	ug/l #	36
81) trans-1,4-Dichloro-2-buten	11.15	75	93078	72.22	ug/l #	11
95) Naphthalene	13.84	128	33335	2.23	ug/l	99

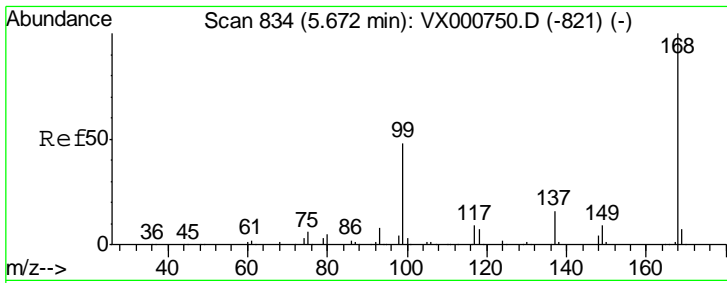
(#) = qualifier out of range (m) = manual integration (+) = signals summed

Data Path : W:\HPCHEM1\MSVOA\_X\DATA\VX041218\  
 Data File : VX000800.D  
 Acq On : 12 Apr 2018 14:24  
 Operator : JC/MD  
 Sample : J2307-06 5X  
 Misc : 5.0mL/MSVOA\_X/WATER  
 ALS Vial : 8 Sample Multiplier: 1

Instrument :  
 MSVOA\_X  
 Client Sampled :  
 WC-PH3-SZ-03

Quant Time: Apr 13 06:53:55 2018  
 Quant Method : W:\HPCHEM1\MSVOA\_X\METHOD\82X041018W.M  
 Quant Title : SW846 8260  
 QLast Update : Tue Apr 10 15:49:28 2018  
 Response via : Initial Calibration

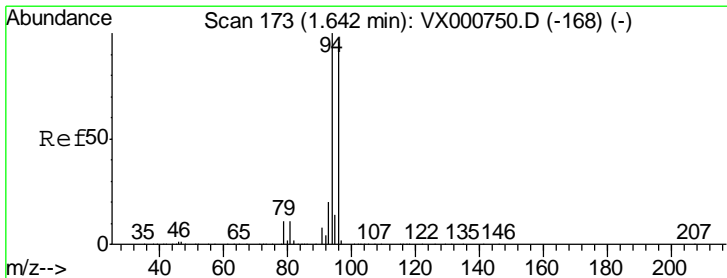
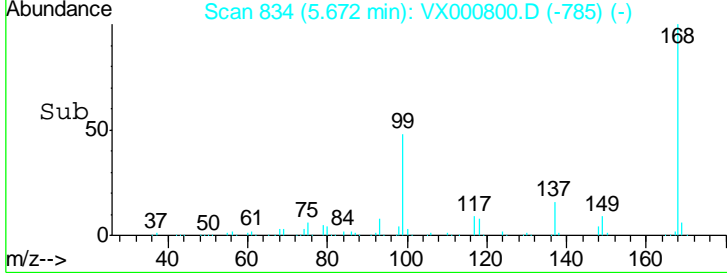
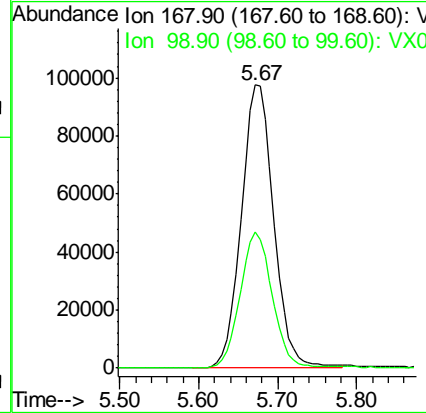
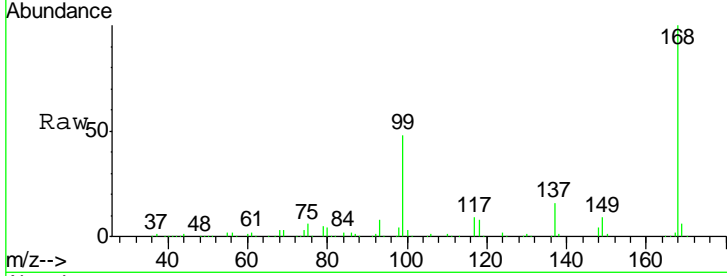




#1  
 Pentafluorobenzene  
 Concen: 50.00 ug/l  
 RT: 5.67 min Scan# 834  
 Delta R.T. -0.00 min  
 Lab File: VX000800.D  
 Acq: 12 Apr 2018 14:24

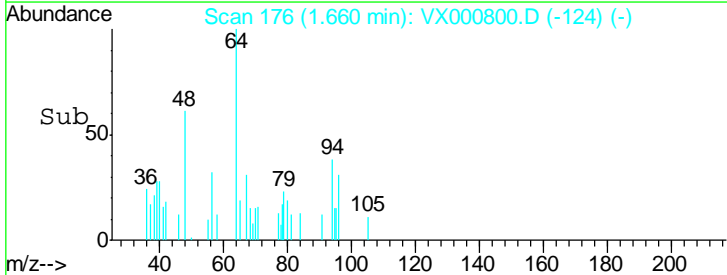
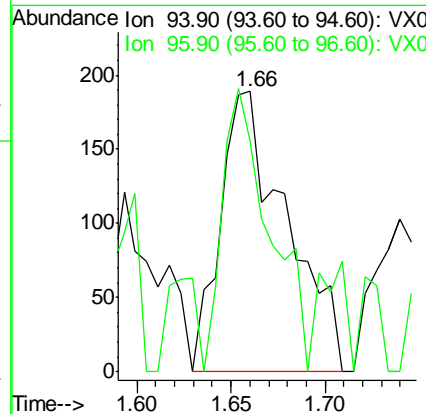
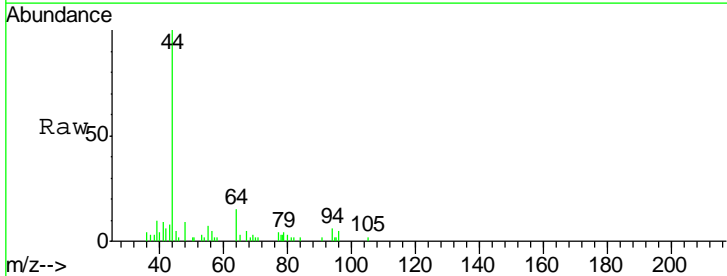
Instrument :  
 MSVOA\_X  
 ClientSampleId :  
 WC-PH3-SZ-03

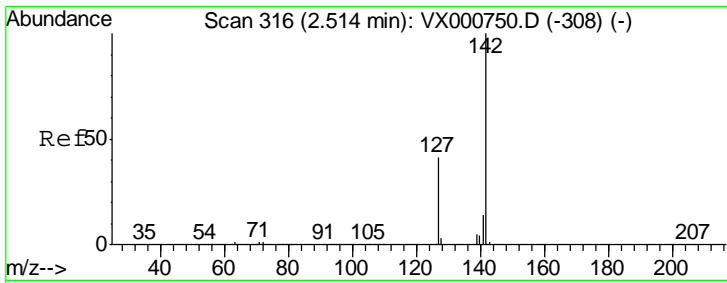
Tgt Ion: 168 Resp: 279223  
 Ion Ratio Lower Upper  
 168 100  
 99 48.1 38.3 57.5



#5  
 Bromomethane  
 Concen: Below Cal  
 RT: 1.66 min Scan# 176  
 Delta R.T. 0.02 min  
 Lab File: VX000800.D  
 Acq: 12 Apr 2018 14:24

Tgt Ion: 94 Resp: 460  
 Ion Ratio Lower Upper  
 94 100  
 96 49.2 77.0 115.6#

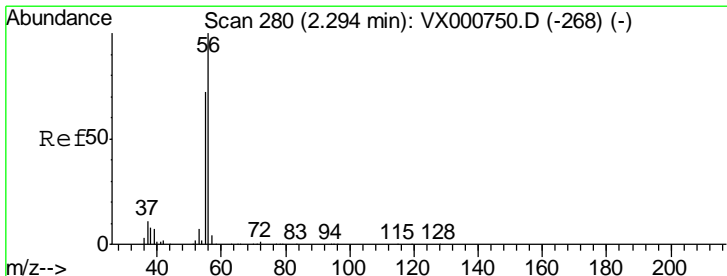
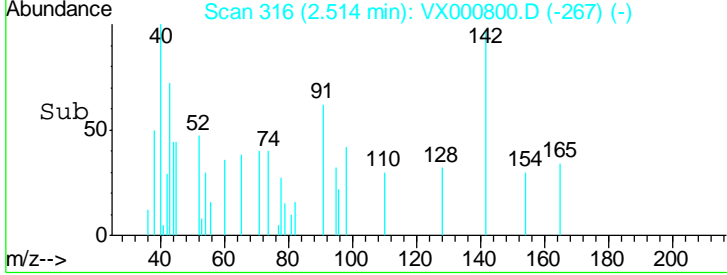
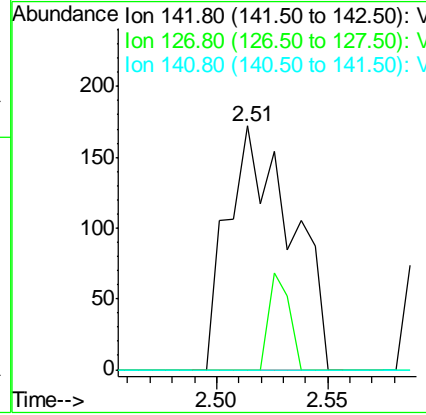
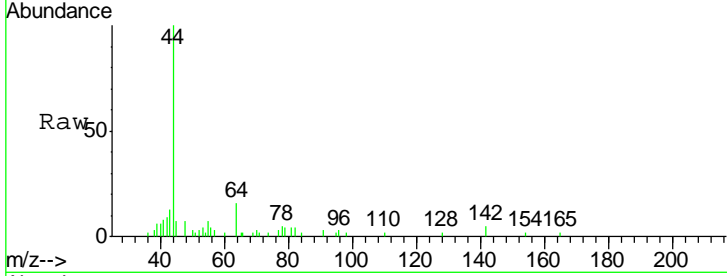




#10  
Methyl Iodide  
Concen: 8.37 ug/l  
RT: 2.51 min Scan# 316  
Delta R.T. 0.00 min  
Lab File: VX000800.D  
Acq: 12 Apr 2018 14:24

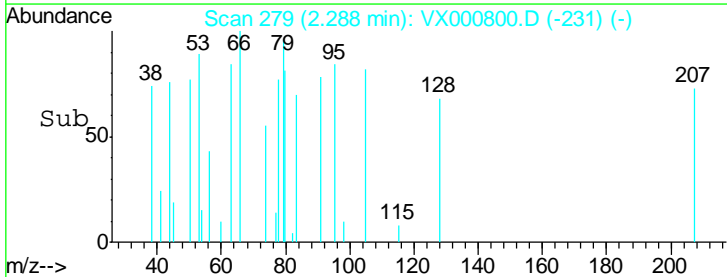
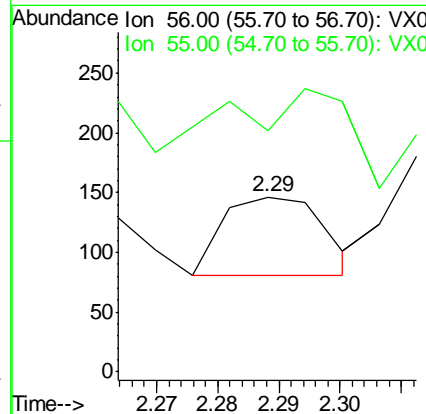
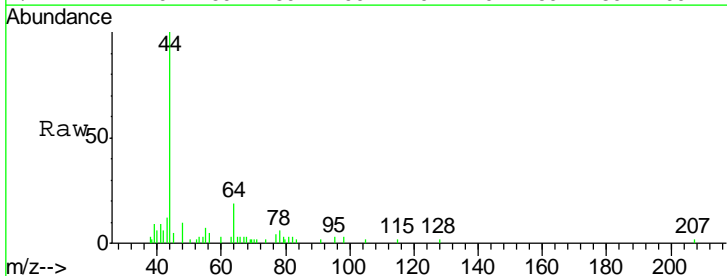
**Instrument :**  
MSVOA\_X  
**ClientSampled :**  
WC-PH3-SZ-03

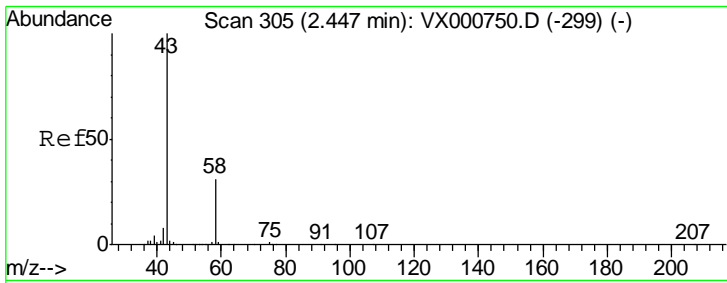
Tgt Ion	Resp	Lower	Upper
142	100		
127	12.9	32.6	49.0#
141	0.0	11.5	17.3#



#13  
Acrolein  
Concen: 0.24 ug/l  
RT: 2.29 min Scan# 279  
Delta R.T. -0.01 min  
Lab File: VX000800.D  
Acq: 12 Apr 2018 14:24

Tgt Ion	Resp	Lower	Upper
56	100		
55	137.8	58.7	88.1#

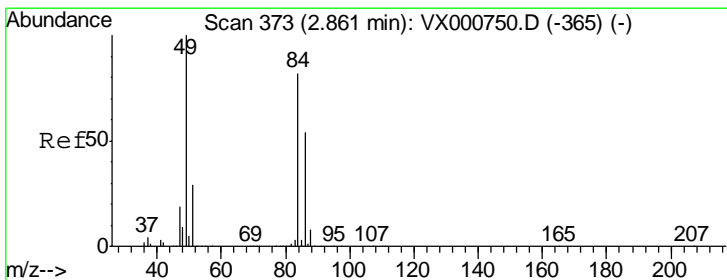
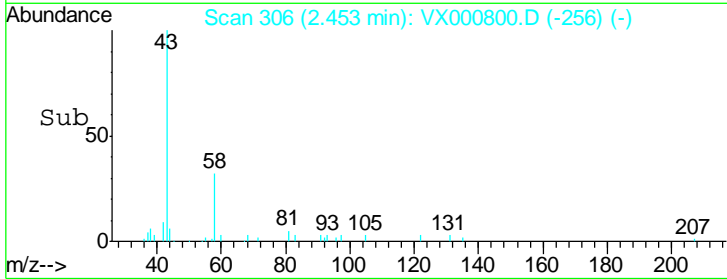
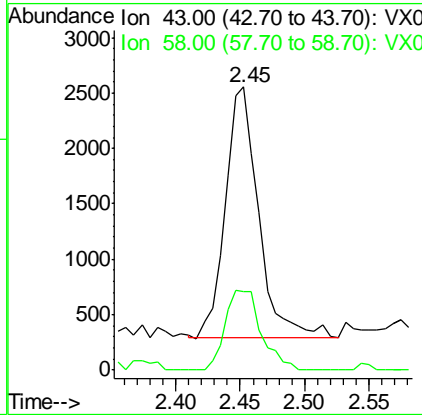
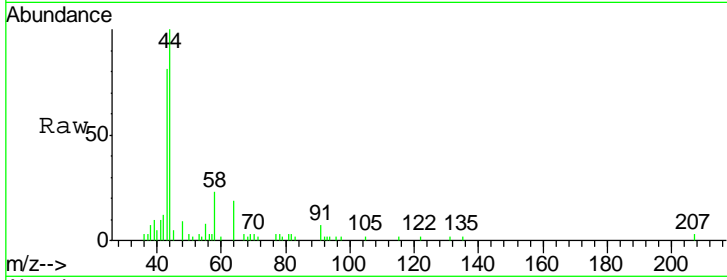




#16  
 Acetone  
 Concen: 3.33 ug/l  
 RT: 2.45 min Scan# 306  
 Delta R.T. 0.01 min  
 Lab File: VX000800.D  
 Acq: 12 Apr 2018 14:24

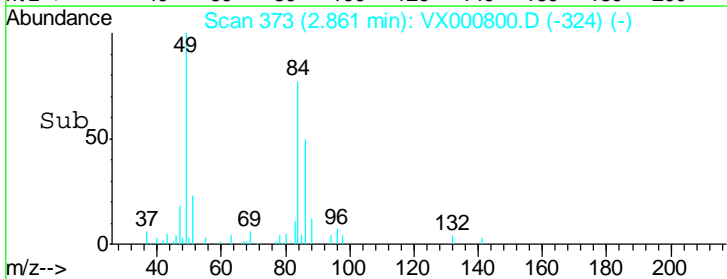
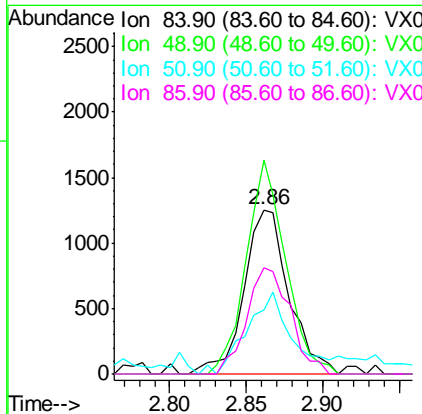
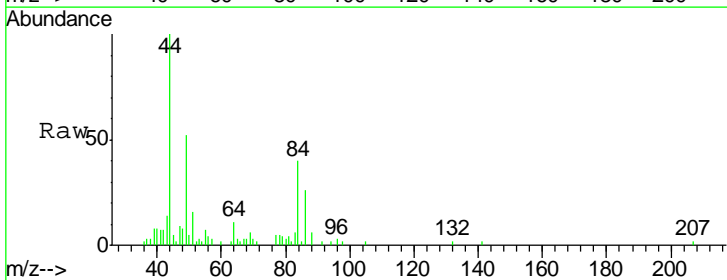
**Instrument :**  
 MSVOA\_X  
**ClientSampled :**  
 WC-PH3-SZ-03

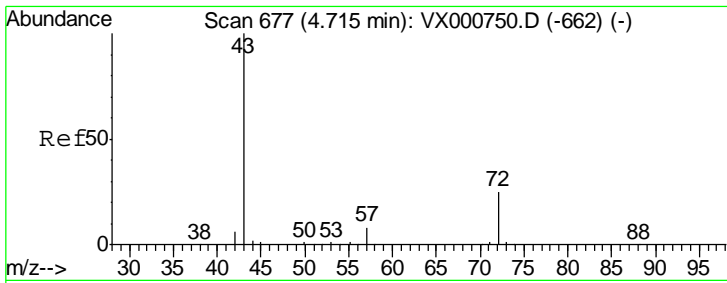
Tgt Ion	Resp	Lower	Upper
43	100		
58	31.5	24.6	37.0



#20  
 Methylene Chloride  
 Concen: 0.91 ug/l  
 RT: 2.86 min Scan# 373  
 Delta R.T. -0.00 min  
 Lab File: VX000800.D  
 Acq: 12 Apr 2018 14:24

Tgt Ion	Resp	Lower	Upper
84	100		
49	130.1	98.1	147.1
51	34.0	28.9	43.3
86	64.4	52.7	79.1

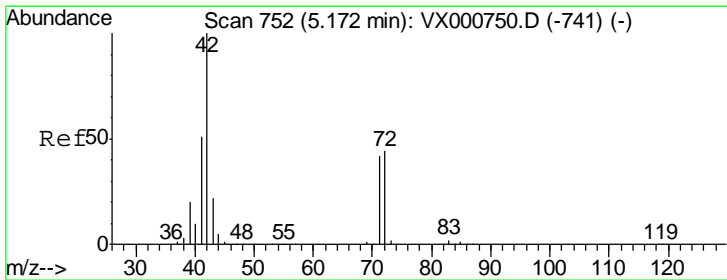
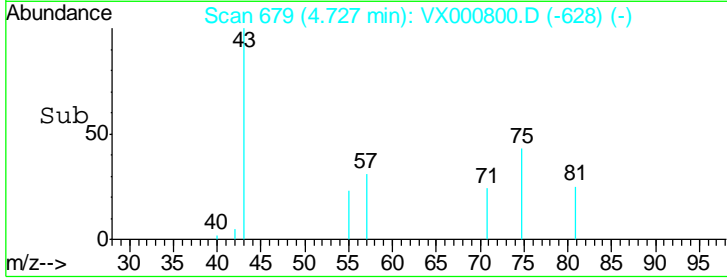
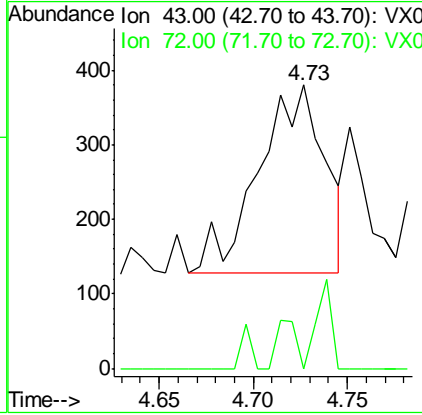
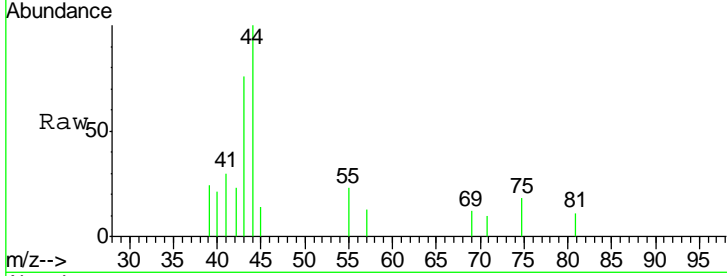




#25  
 2-Butanone  
 Concen: 0.30 ug/l  
 RT: 4.73 min Scan# 679  
 Delta R.T. 0.01 min  
 Lab File: VX000800.D  
 Acq: 12 Apr 2018 14:24

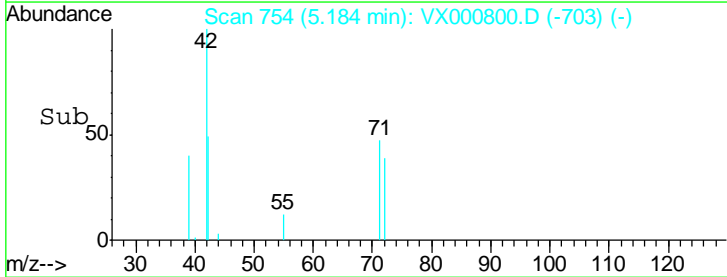
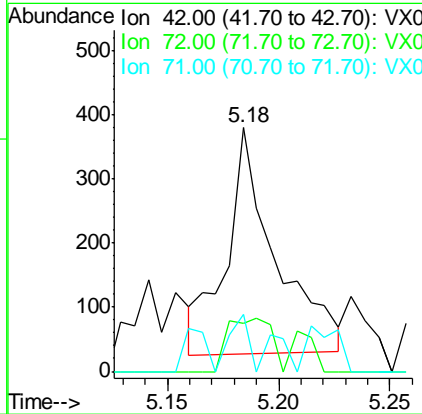
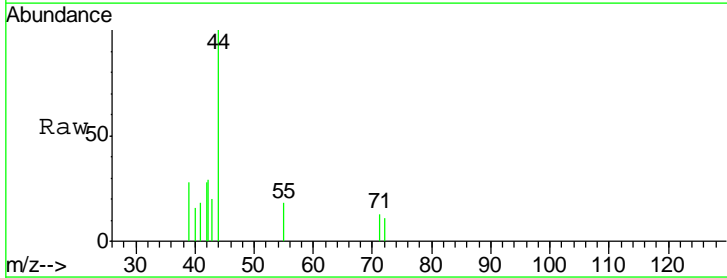
Instrument :  
 MSVOA\_X  
 ClientSampled :  
 WC-PH3-SZ-03

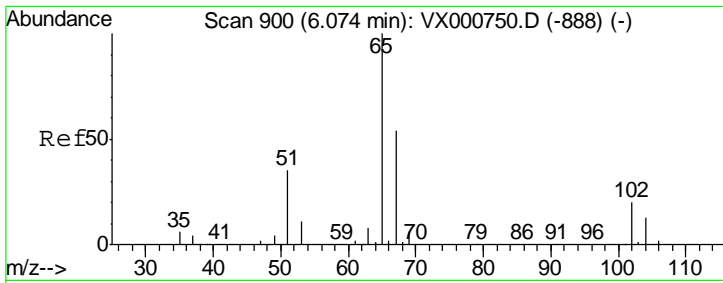
Tgt Ion: 43 Resp: 611  
 Ion Ratio Lower Upper  
 43 100  
 72 0.0 20.3 30.5#



#29  
 Tetrahydrofuran  
 Concen: 0.43 ug/l  
 RT: 5.18 min Scan# 754  
 Delta R.T. 0.01 min  
 Lab File: VX000800.D  
 Acq: 12 Apr 2018 14:24

Tgt Ion: 42 Resp: 545  
 Ion Ratio Lower Upper  
 42 100  
 72 20.7 35.1 52.7#  
 71 9.7 32.8 49.2#

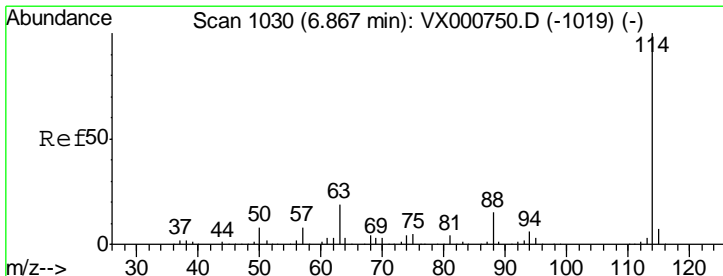
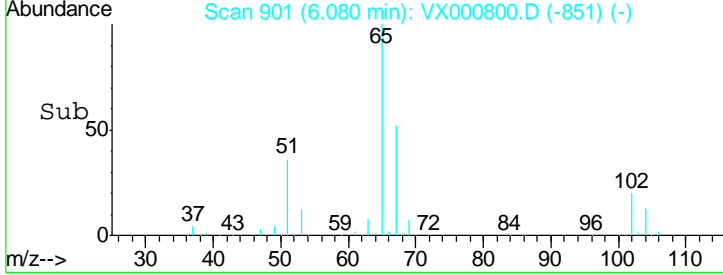
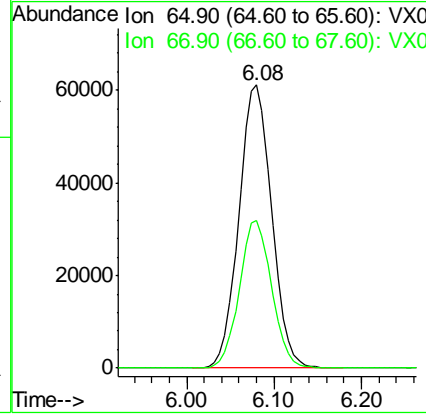
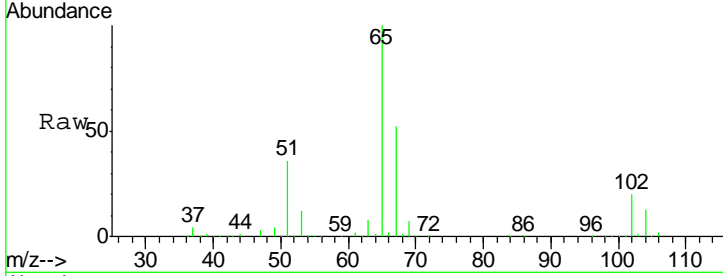




#33  
 1,2-Dichloroethane-d4  
 Concen: 45.23 ug/l  
 RT: 6.08 min Scan# 901  
 Delta R.T. 0.01 min  
 Lab File: VX000800.D  
 Acq: 12 Apr 2018 14:24

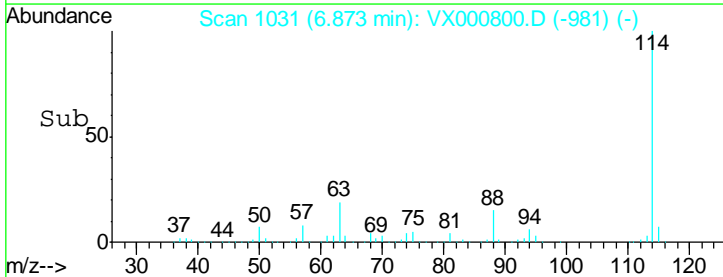
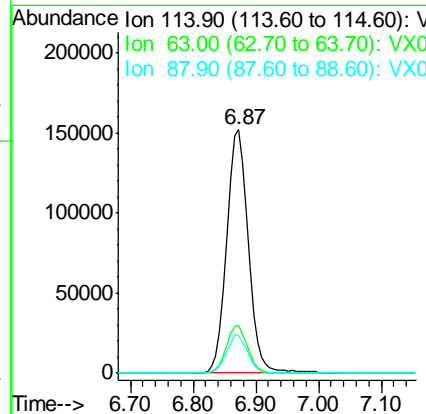
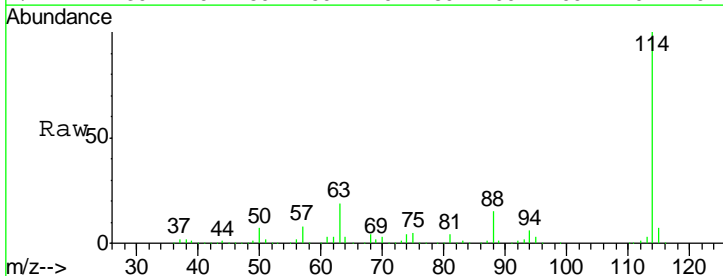
**Instrument :**  
 MSVOA\_X  
**ClientSampled :**  
 WC-PH3-SZ-03

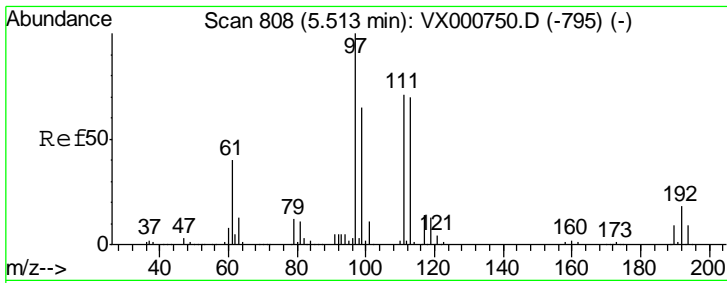
Tgt Ion: 65 Resp: 159250  
 Ion Ratio Lower Upper  
 65 100  
 67 51.6 0.0 103.8



#34  
 1,4-Difluorobenzene  
 Concen: 50.00 ug/l  
 RT: 6.87 min Scan# 1031  
 Delta R.T. 0.01 min  
 Lab File: VX000800.D  
 Acq: 12 Apr 2018 14:24

Tgt Ion: 114 Resp: 364557  
 Ion Ratio Lower Upper  
 114 100  
 63 19.5 0.0 38.4  
 88 15.4 0.0 31.0

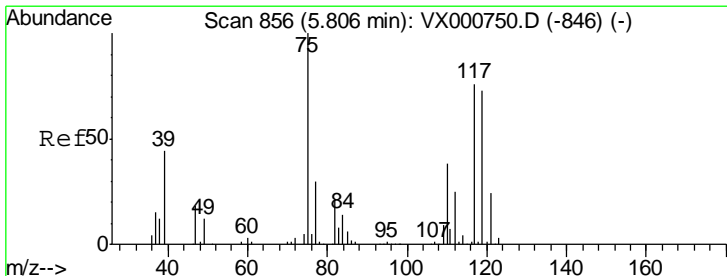
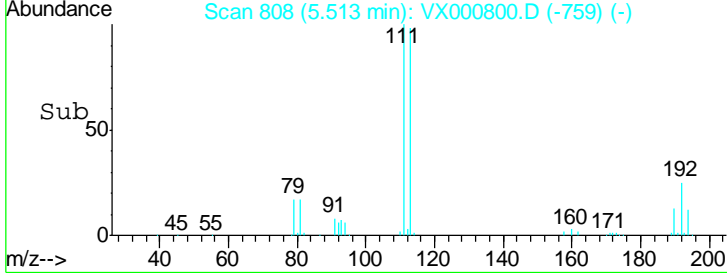
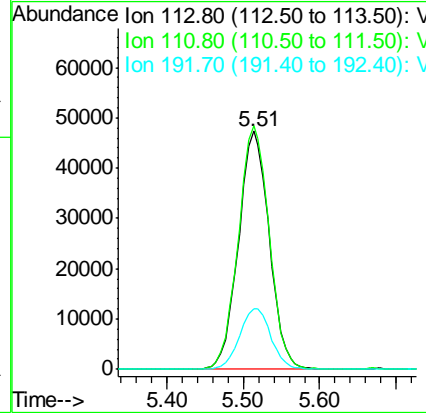
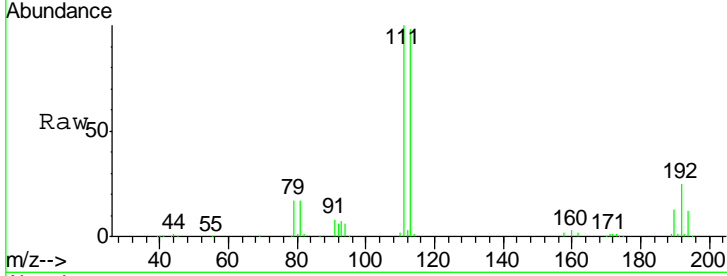




#35  
 Dibromofluoromethane  
 Concen: 46.99 ug/l  
 RT: 5.51 min Scan# 808  
 Delta R.T. -0.00 min  
 Lab File: VX000800.D  
 Acq: 12 Apr 2018 14:24

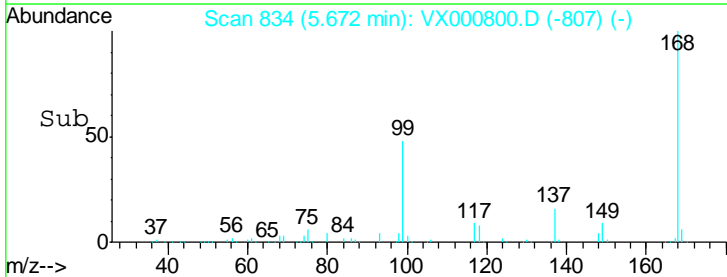
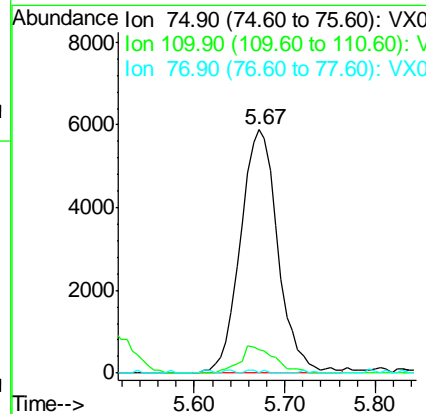
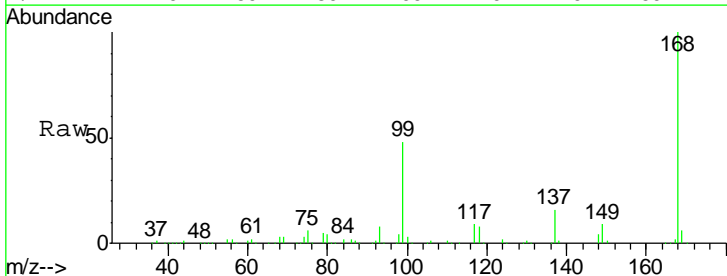
Instrument : MSVOA\_X  
 ClientSampled : WC-PH3-SZ-03

Tgt Ion	Resp	Lower	Upper
113	131983		
113	100		
111	102.8	81.5	122.3
192	25.9	20.4	30.6

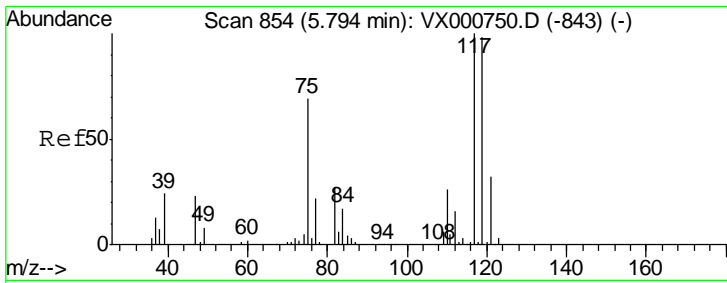


#36  
 1,1-Dichloropropene  
 Concen: 4.20 ug/l  
 RT: 5.67 min Scan# 834  
 Delta R.T. -0.13 min  
 Lab File: VX000800.D  
 Acq: 12 Apr 2018 14:24

Tgt Ion	Resp	Lower	Upper
75	16863		
75	100		
110	10.1	19.2	57.6#
77	0.3	25.4	38.2#



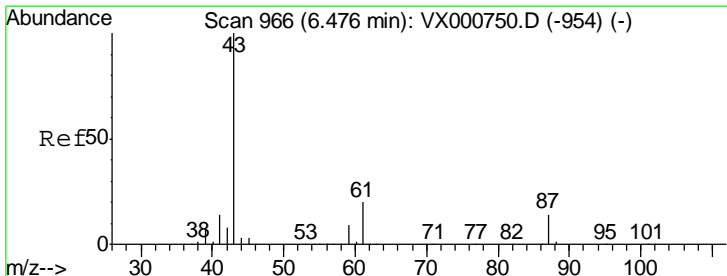
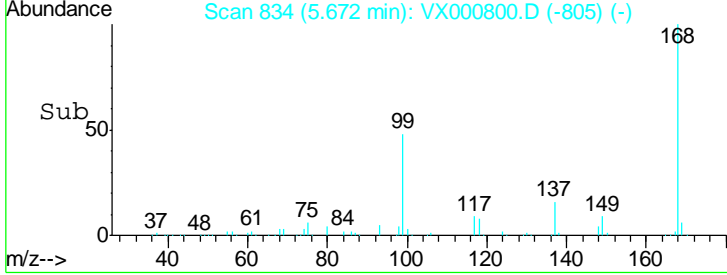
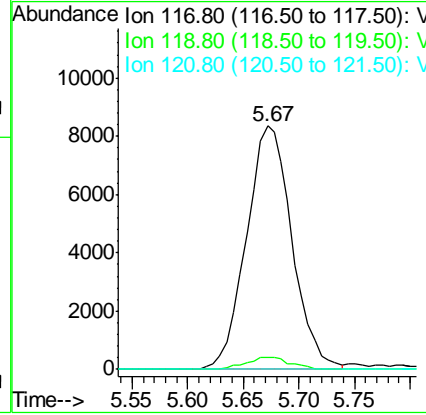
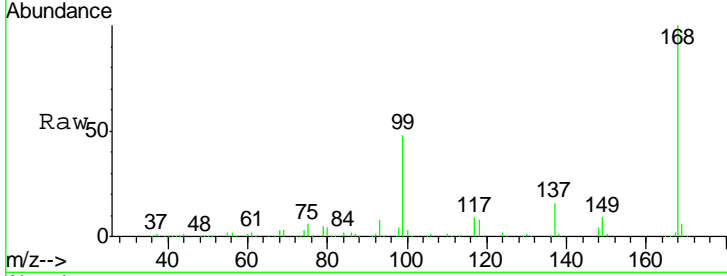




#38  
 Carbon Tetrachloride  
 Concen: 5.27 ug/l  
 RT: 5.67 min Scan# 834  
 Delta R.T. -0.12 min  
 Lab File: VX000800.D  
 Acq: 12 Apr 2018 14:24

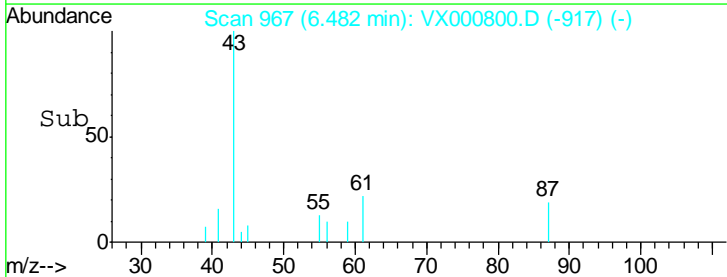
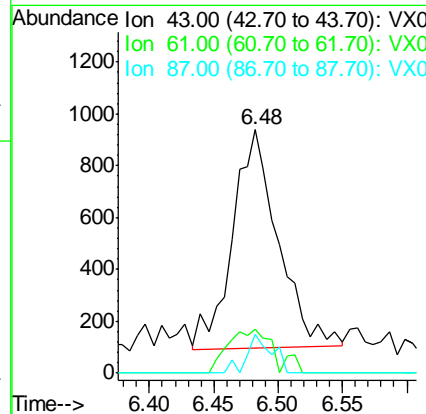
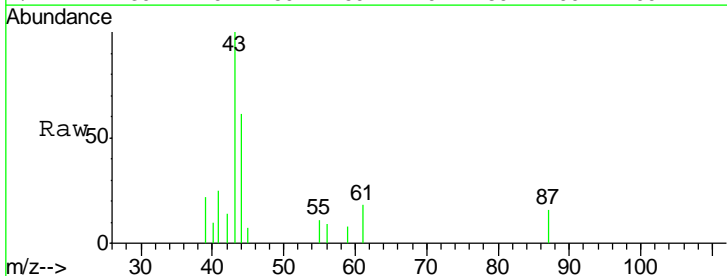
Instrument : MSVOA\_X  
 ClientSampled : WC-PH3-SZ-03

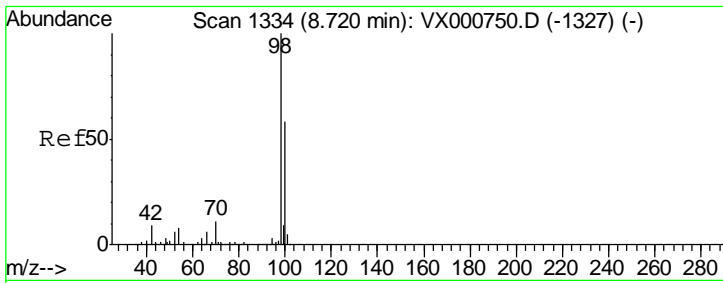
Tgt Ion	Resp	Lower	Upper
117	23699		
119	5.0	78.4	117.6#
121	0.0	25.4	38.0#



#43  
 Isopropyl Acetate  
 Concen: 0.31 ug/l  
 RT: 6.48 min Scan# 967  
 Delta R.T. 0.01 min  
 Lab File: VX000800.D  
 Acq: 12 Apr 2018 14:24

Tgt Ion	Resp	Lower	Upper
43	2060		
61	20.6	15.6	23.4
87	9.7	10.7	16.1#

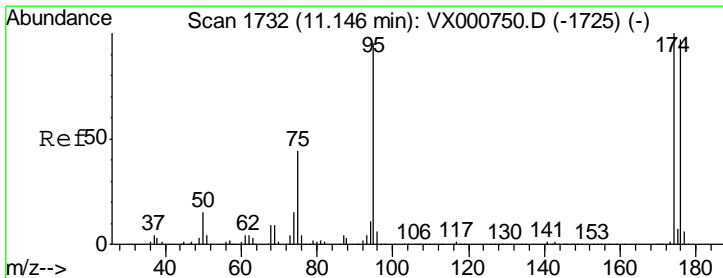
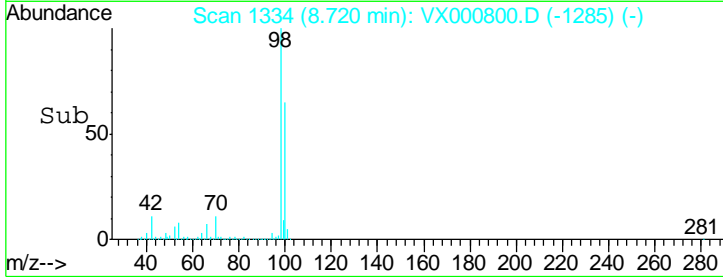
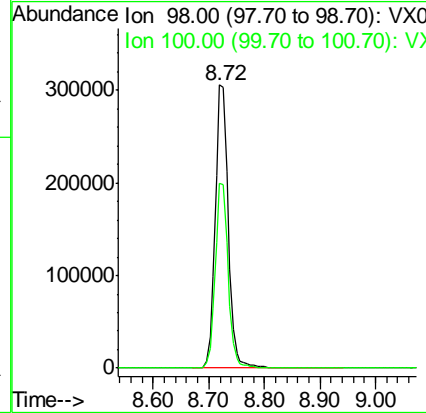
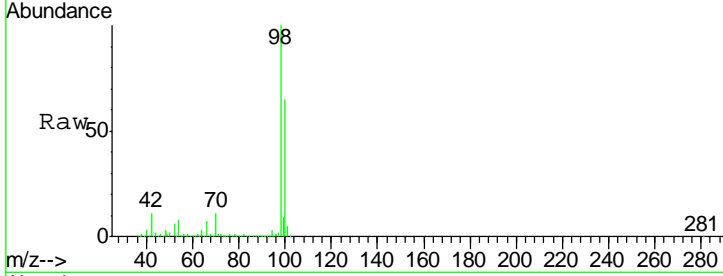




#50  
 Toluene-d8  
 Concen: 47.97 ug/l  
 RT: 8.72 min Scan# 1334  
 Delta R.T. -0.00 min  
 Lab File: VX000800.D  
 Acq: 12 Apr 2018 14:24

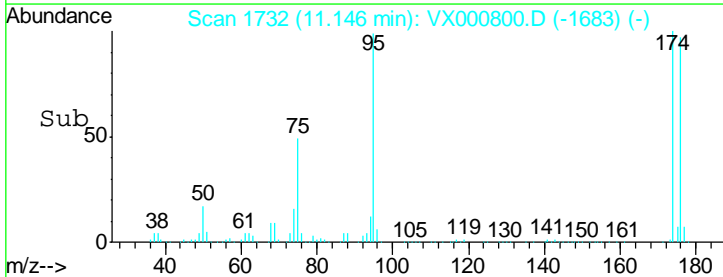
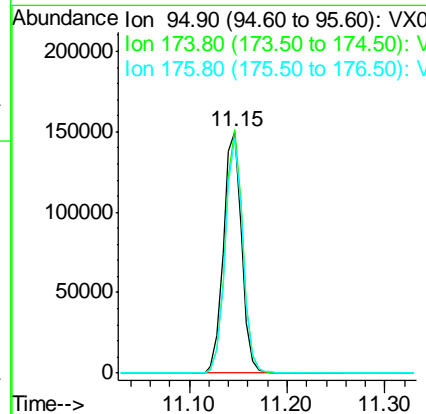
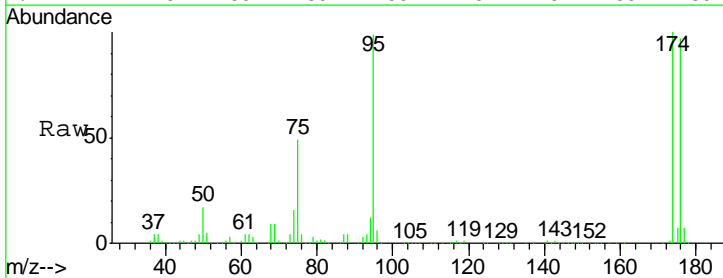
Instrument :  
 MSVOA\_X  
 ClientSampled :  
 WC-PH3-SZ-03

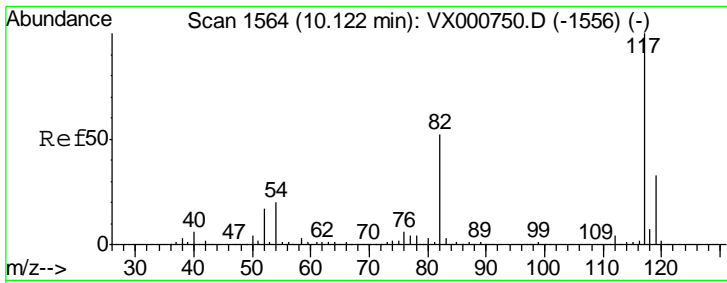
Tgt Ion: 98 Resp: 501631  
 Ion Ratio Lower Upper  
 98 100  
 100 64.8 52.6 79.0



#62  
 4-Bromofluorobenzene  
 Concen: 44.44 ug/l  
 RT: 11.15 min Scan# 1732  
 Delta R.T. -0.00 min  
 Lab File: VX000800.D  
 Acq: 12 Apr 2018 14:24

Tgt Ion: 95 Resp: 192272  
 Ion Ratio Lower Upper  
 95 100  
 174 97.6 0.0 198.4  
 176 94.8 0.0 194.4

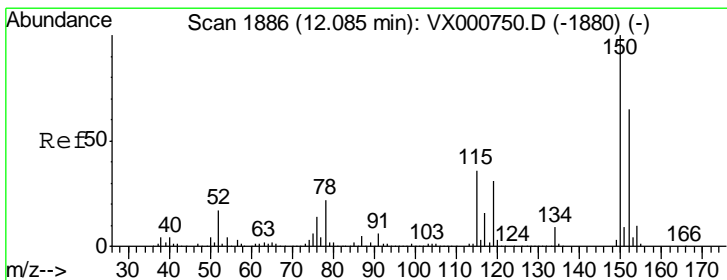
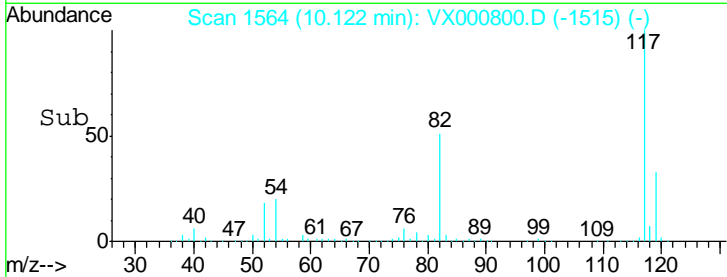
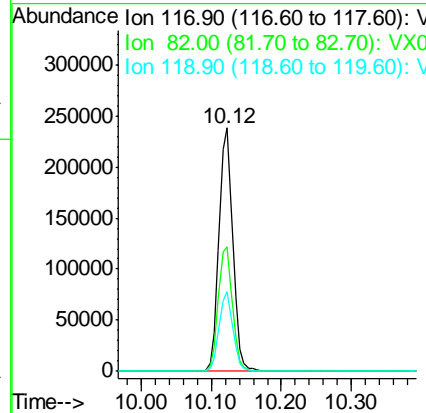
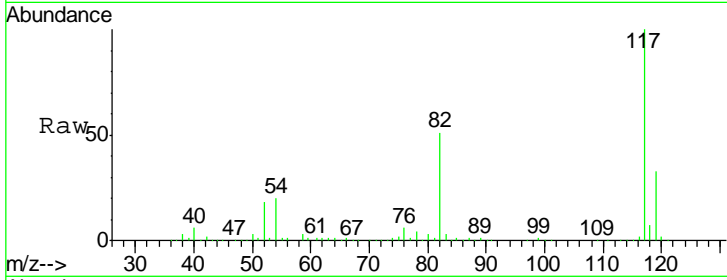




#63  
 Chlorobenzene-d5  
 Concen: 50.00 ug/l  
 RT: 10.12 min Scan# 1564  
 Delta R.T. -0.00 min  
 Lab File: VX000800.D  
 Acq: 12 Apr 2018 14:24

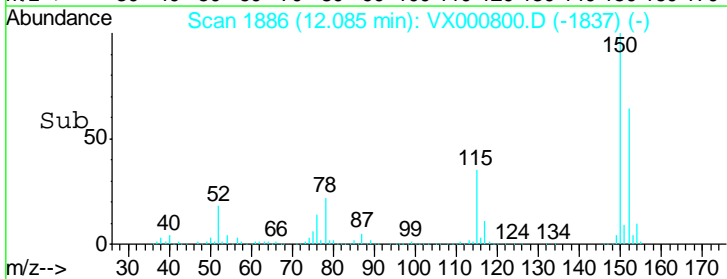
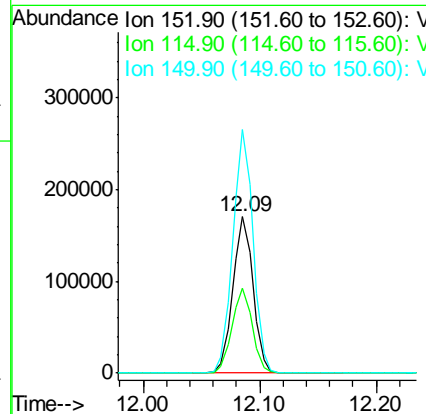
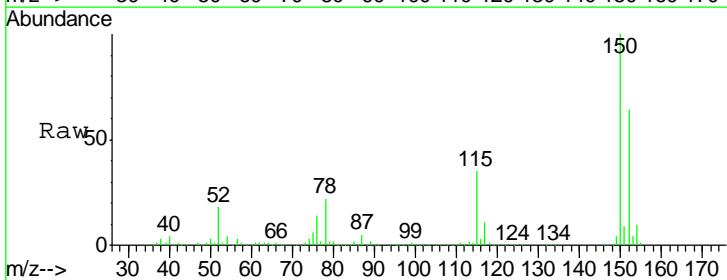
Instrument :  
 MSVOA\_X  
 ClientSampled :  
 WC-PH3-SZ-03

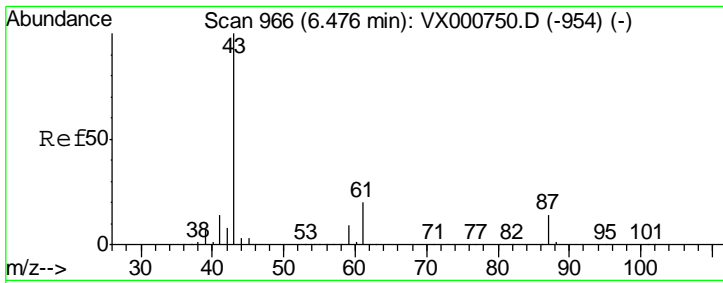
Tgt Ion	Resp	Lower	Upper
117	329439		
82	51.3	41.9	62.9
119	32.8	26.0	39.0



#72  
 1,4-Dichlorobenzene-d4  
 Concen: 50.00 ug/l  
 RT: 12.09 min Scan# 1886  
 Delta R.T. -0.00 min  
 Lab File: VX000800.D  
 Acq: 12 Apr 2018 14:24

Tgt Ion	Resp	Lower	Upper
152	205582		
115	54.2	37.9	113.7
150	155.6	0.0	348.0

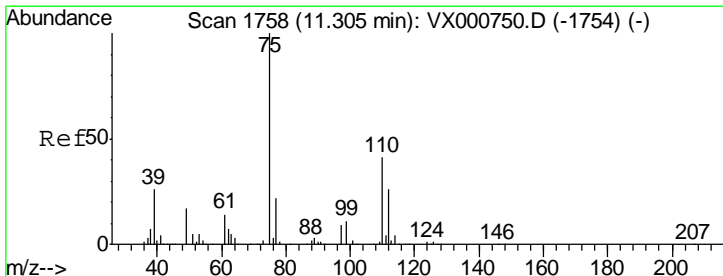
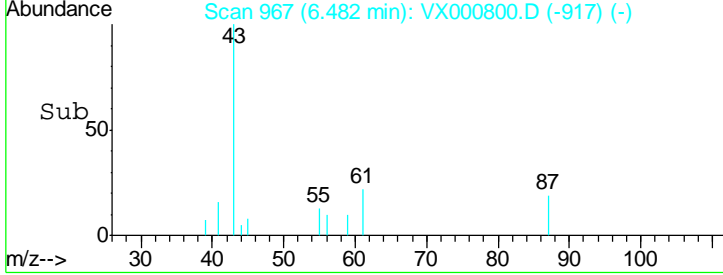
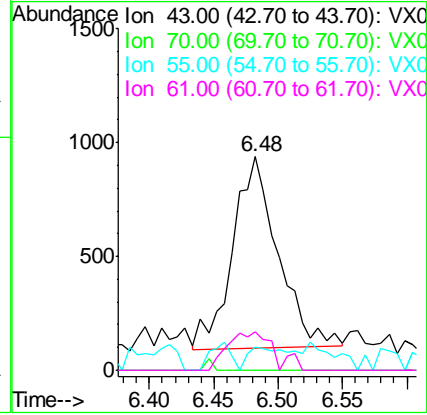
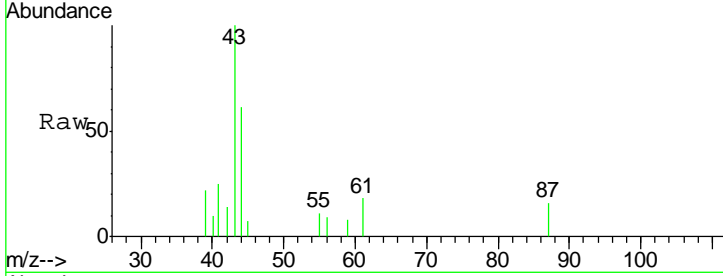




#74  
 N-amyl acetate  
 Concen: 0.35 ug/l  
 RT: 6.48 min Scan# 967  
 Delta R.T. 0.01 min  
 Lab File: VX000800.D  
 Acq: 12 Apr 2018 14:24

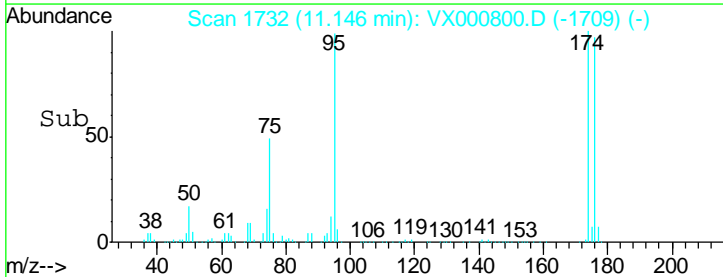
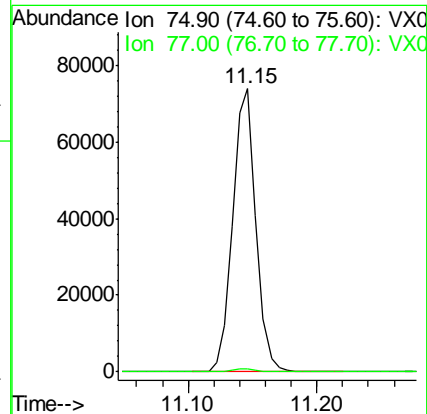
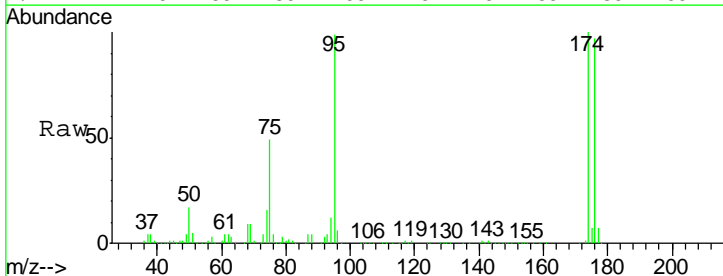
**Instrument :**  
 MSVOA\_X  
**ClientSampled :**  
 WC-PH3-SZ-03

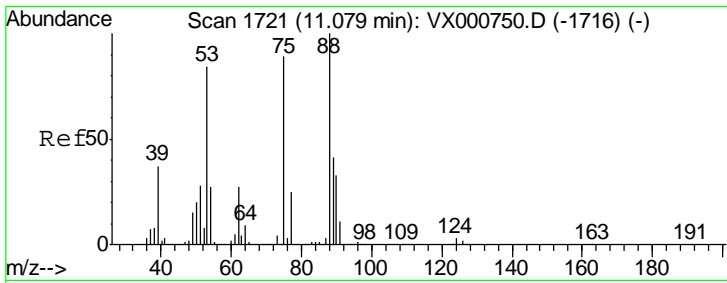
Tgt Ion	Resp	Lower	Upper
43	100		
70	0.0	0.0	0.0
55	9.3	0.0	0.0#
61	20.6	15.6	23.4



#76  
 1,2,3-Trichloropropane  
 Concen: 26.25 ug/l  
 RT: 11.15 min Scan# 1732  
 Delta R.T. -0.16 min  
 Lab File: VX000800.D  
 Acq: 12 Apr 2018 14:24

Tgt Ion	Resp	Lower	Upper
75	100		
77	1.1	20.5	61.5#

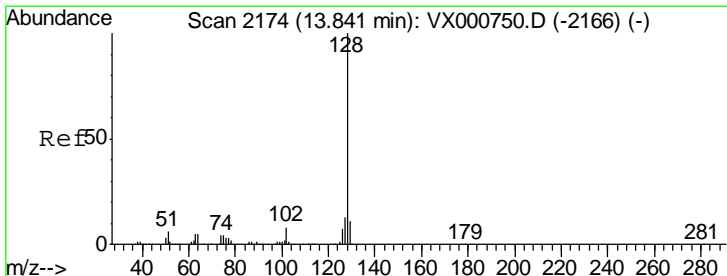
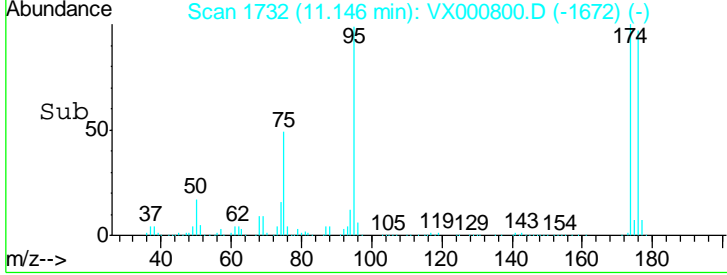
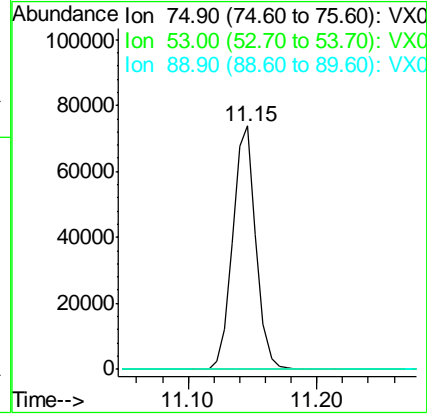
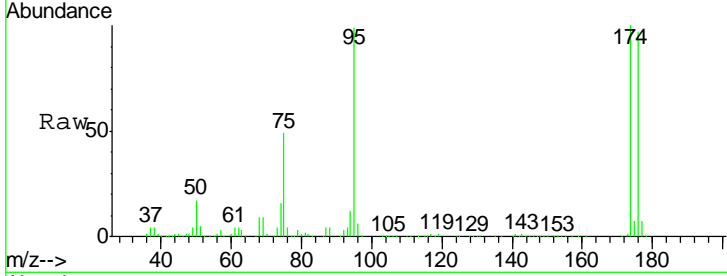




#81  
 trans-1,4-Dichloro-2-butene  
 Concen: 72.22 ug/l  
 RT: 11.15 min Scan# 1732  
 Delta R.T. 0.07 min  
 Lab File: VX000800.D  
 Acq: 12 Apr 2018 14:24

Instrument :  
 MSVOA\_X  
 ClientSampled :  
 WC-PH3-SZ-03

Tgt Ion	Resp	Lower	Upper
75	100		
53	0.0	75.4	113.0#
89	0.0	40.9	61.3#



#95  
 Naphthalene  
 Concen: 2.23 ug/l  
 RT: 13.84 min Scan# 2174  
 Delta R.T. -0.00 min  
 Lab File: VX000800.D  
 Acq: 12 Apr 2018 14:24

Tgt Ion	Resp	Lower	Upper
128	100		
127	12.8	10.4	15.6
129	11.1	8.7	13.1

