

Data File : VX000899.D
 Acq On : 15 Apr 2018 16:11
 Operator : JC/MD
 Sample : ZHE-13 5X
 Misc : 5.0mL/MSVOA_X/WATER
 ALS Vial : 12 Sample Multiplier: 1

Instrument :
 MSVOA_X
 ClientSampleId :
 PB108205ZHE#13 5X

Quant Time: Apr 16 07:38:59 2018
 Quant Method : W:\HPCHEM1\MSVOA_X\METHOD\82X041018W.M
 Quant Title : SW846 8260
 QLast Update : Tue Apr 10 15:49:28 2018
 Response via : Initial Calibration

Internal Standards	R.T.	QIon	Response	Conc	Units	Dev(Min)
1) Pentafluorobenzene	5.67	168	281979	50.00	ug/l	0.00
34) 1,4-Difluorobenzene	6.87	114	380893	50.00	ug/l	0.00
63) Chlorobenzene-d5	10.12	117	353771	50.00	ug/l	0.00
72) 1,4-Dichlorobenzene-d4	12.09	152	234008	50.00	ug/l	0.00

System Monitoring Compounds	R.T.	QIon	Response	Conc	Units	Dev(Min)
33) 1,2-Dichloroethane-d4	6.07	65	167610	47.14	ug/l	0.00
Spiked Amount				50.000		
			Recovery	=	94.28%	
35) Dibromofluoromethane	5.51	113	134934	45.98	ug/l	0.00
Spiked Amount				50.000		
			Recovery	=	91.96%	
50) Toluene-d8	8.72	98	529089	48.42	ug/l	0.00
Spiked Amount				50.000		
			Recovery	=	96.84%	
62) 4-Bromofluorobenzene	11.14	95	204466	45.23	ug/l	0.00
Spiked Amount				50.000		
			Recovery	=	90.46%	

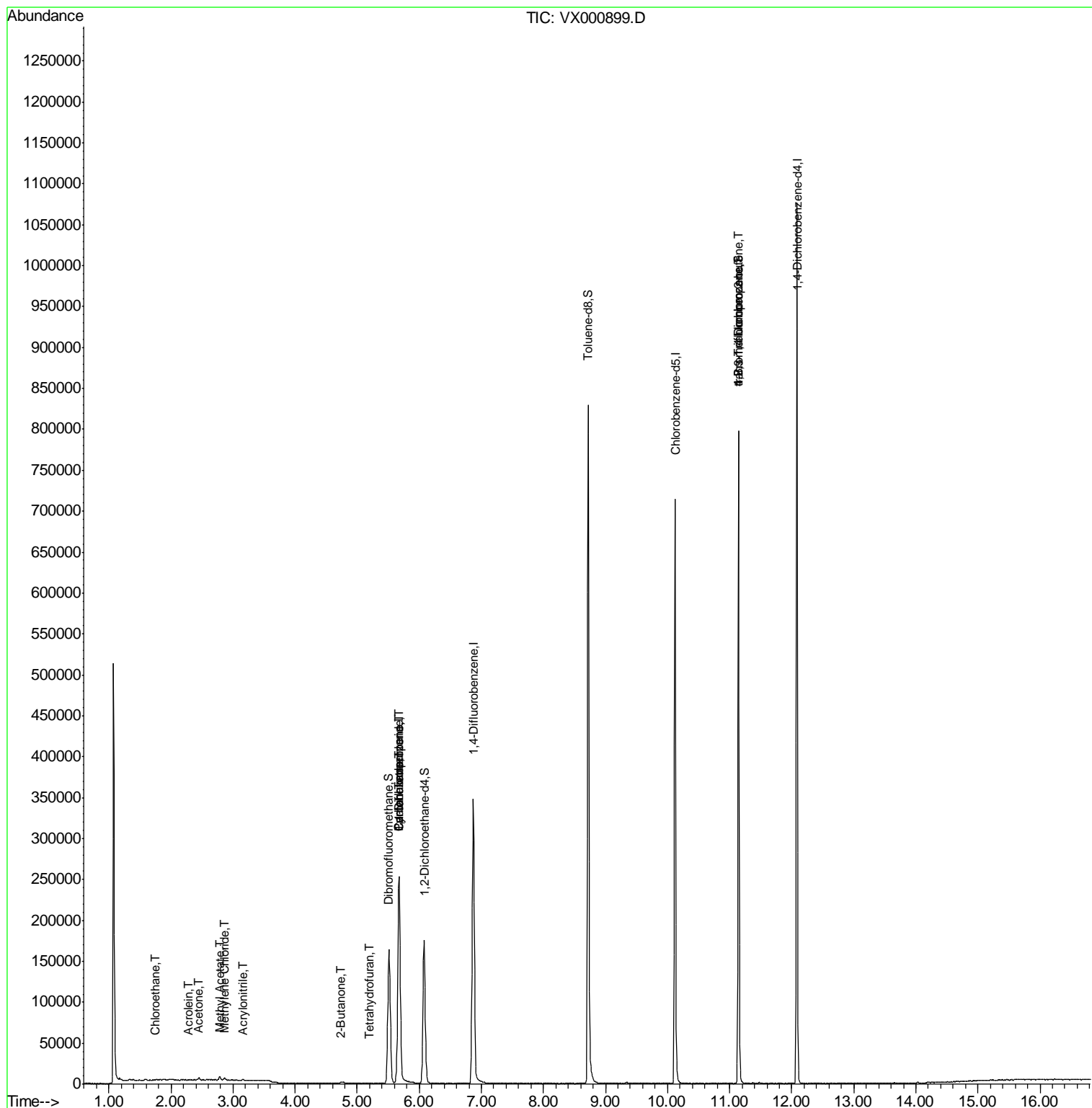
Target Compounds	R.T.	QIon	Response	Conc	Units	Qvalue
5) Bromomethane	1.65	94	277	Below Cal	#	45
6) Chloroethane	1.75	64	975	0.52	ug/l #	43
13) Acrolein	2.29	56	102	0.33	ug/l #	69
15) Acrylonitrile	3.16	53	271	0.20	ug/l #	83
16) Acetone	2.45	43	2669	2.18	ug/l	90
18) Methyl Acetate	2.78	43	5081	1.60	ug/l	99
20) Methylene Chloride	2.86	84	1184	0.42	ug/l #	84
25) 2-Butanone	4.72	43	1107	0.55	ug/l #	50
29) Tetrahydrofuran	5.19	42	485	0.38	ug/l #	61
31) Cyclohexane	5.67	56	4645	0.99	ug/l #	1
36) 1,1-Dichloropropene	5.68	75	16339	3.89	ug/l #	48
38) Carbon Tetrachloride	5.68	117	23886	5.09	ug/l #	15
76) 1,2,3-Trichloropropane	11.14	75	100870	24.99	ug/l #	36
81) trans-1,4-Dichloro-2-buten	11.14	75	100870	68.75	ug/l #	11

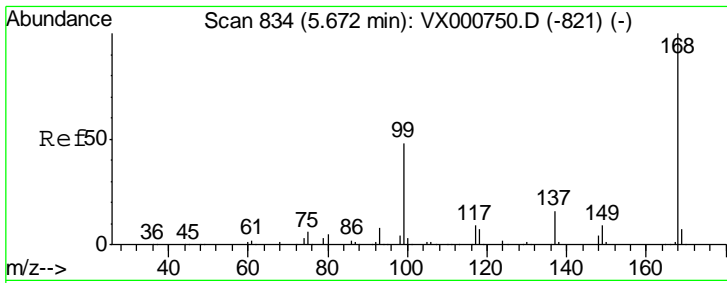
(#) = qualifier out of range (m) = manual integration (+) = signals summed

Data File : VX000899.D
Acq On : 15 Apr 2018 16:11
Operator : JC/MD
Sample : ZHE-13 5X
Misc : 5.0mL/MSVOA_X/WATER
ALS Vial : 12 Sample Multiplier: 1

Instrument :
MSVOA_X
ClientSampleId :
PB108205ZHE#13 5X

Quant Time: Apr 16 07:38:59 2018
Quant Method : W:\HPCHEM1\MSVOA_X\METHOD\82X041018W.M
Quant Title : SW846 8260
QLast Update : Tue Apr 10 15:49:28 2018
Response via : Initial Calibration

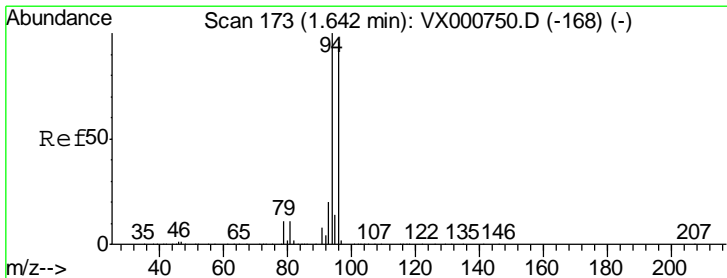
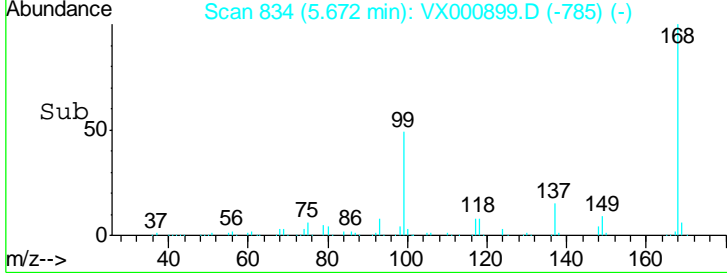
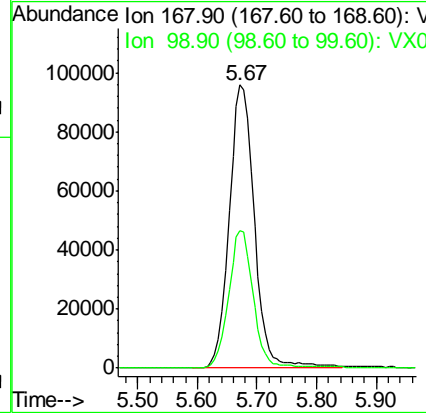
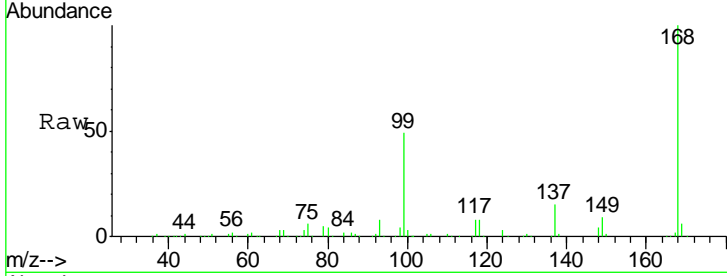




#1
 Pentafluorobenzene
 Concen: 50.00 ug/l
 RT: 5.67 min Scan# 834
 Delta R.T. -0.00 min
 Lab File: VX000899.D
 Acq: 15 Apr 2018 16:11

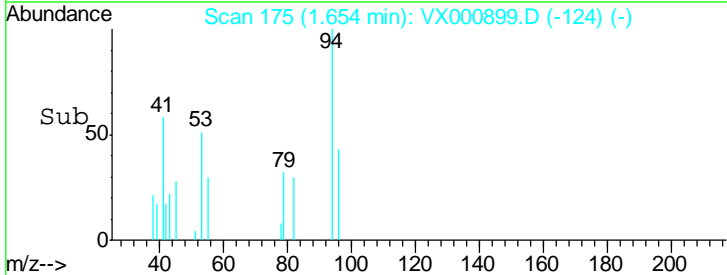
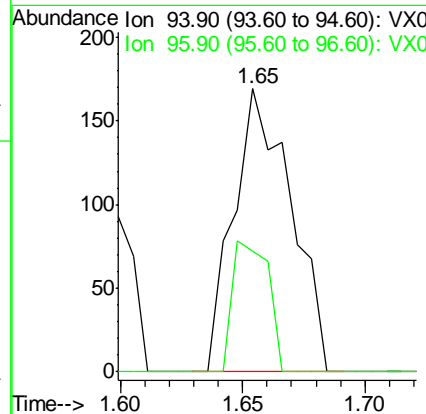
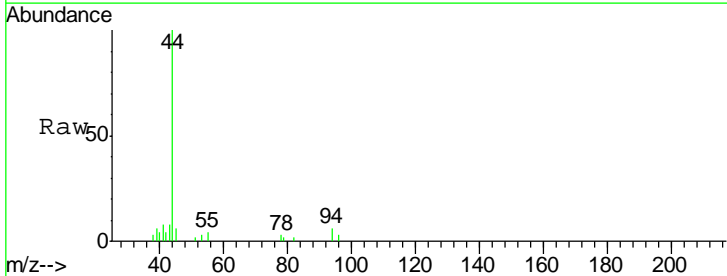
Instrument : MSVOA_X
 ClientSampled : PB108205ZHE#13 5X

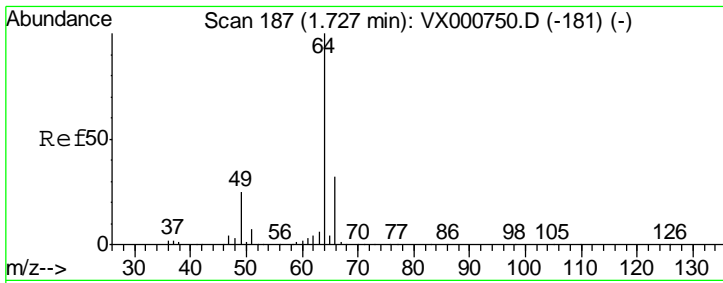
Tgt Ion: 168 Resp: 281979
 Ion Ratio Lower Upper
 168 100
 99 48.5 38.3 57.5



#5
 Bromomethane
 Concen: Below Cal
 RT: 1.65 min Scan# 175
 Delta R.T. 0.01 min
 Lab File: VX000899.D
 Acq: 15 Apr 2018 16:11

Tgt Ion: 94 Resp: 277
 Ion Ratio Lower Upper
 94 100
 96 42.6 77.0 115.6#

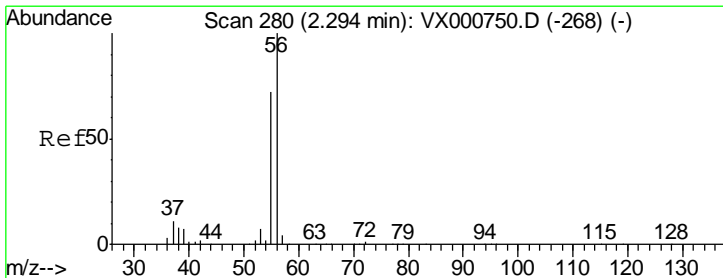
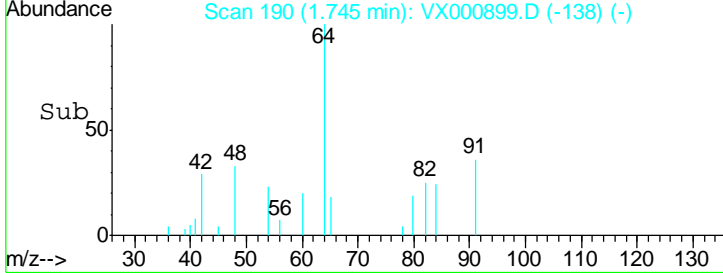
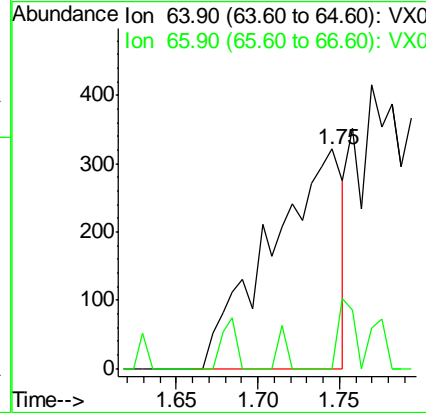
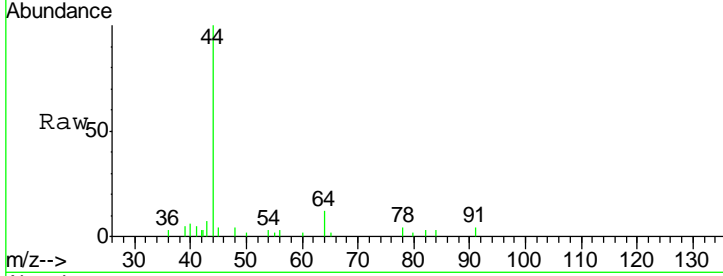




#6
 Chloroethane
 Concen: 0.52 ug/l
 RT: 1.75 min Scan# 190
 Delta R.T. 0.02 min
 Lab File: VX000899.D
 Acq: 15 Apr 2018 16:11

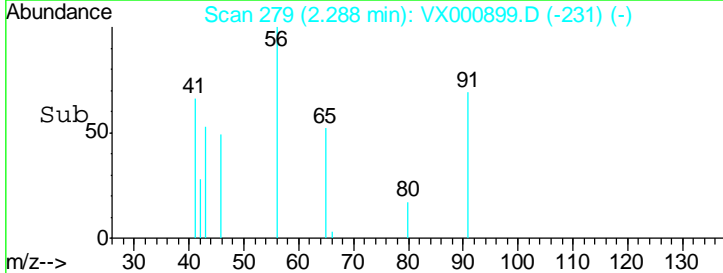
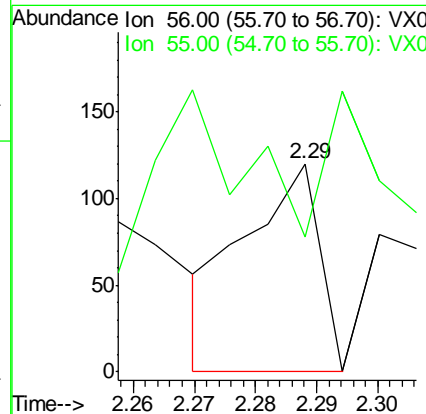
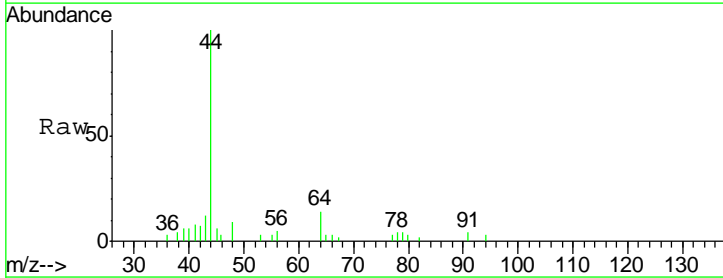
Instrument : MSVOA_X
 ClientSampleId : PB108205ZHE#13 5X

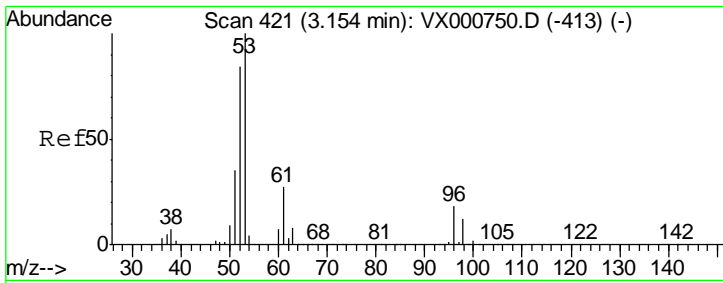
Tgt Ion: 64 Resp: 975
 Ion Ratio Lower Upper
 64 100
 66 0.0 25.3 37.9#



#13
 Acrolein
 Concen: 0.33 ug/l
 RT: 2.29 min Scan# 279
 Delta R.T. -0.01 min
 Lab File: VX000899.D
 Acq: 15 Apr 2018 16:11

Tgt Ion: 56 Resp: 102
 Ion Ratio Lower Upper
 56 100
 55 47.1 58.7 88.1#

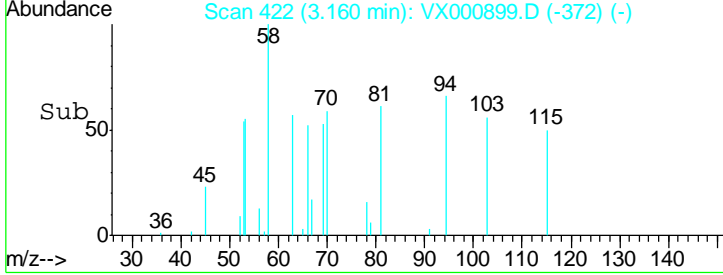
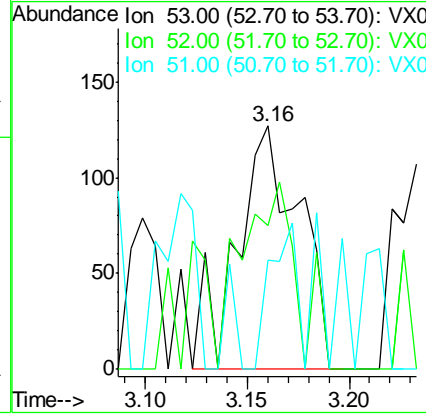
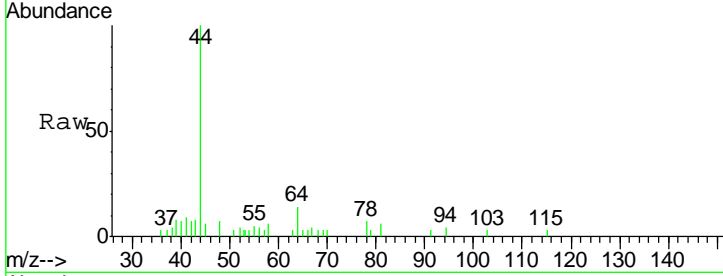




#15
 Acrylonitrile
 Concen: 0.20 ug/l
 RT: 3.16 min Scan# 422
 Delta R.T. 0.01 min
 Lab File: VX000899.D
 Acq: 15 Apr 2018 16:11

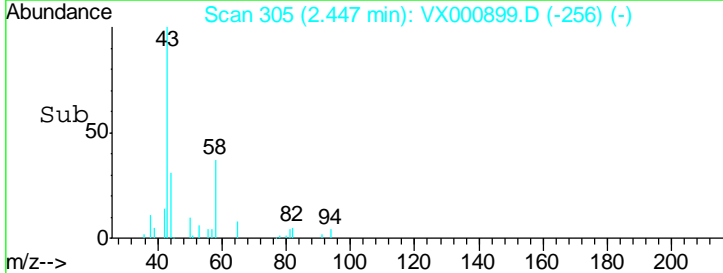
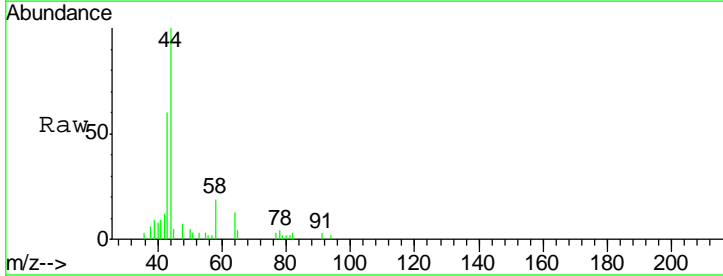
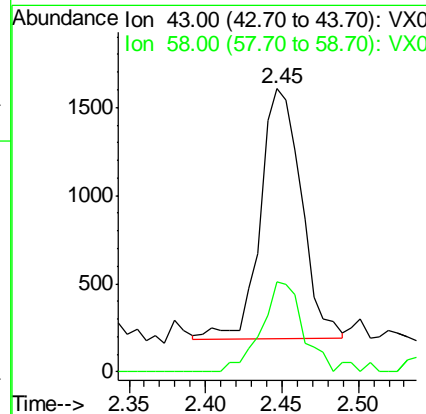
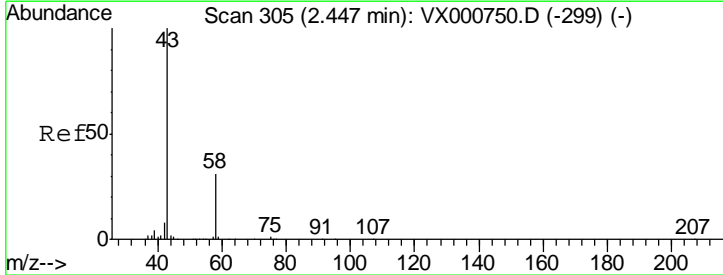
Instrument :
 MSVOA_X
ClientSampled :
 PB108205ZHE#13 5X

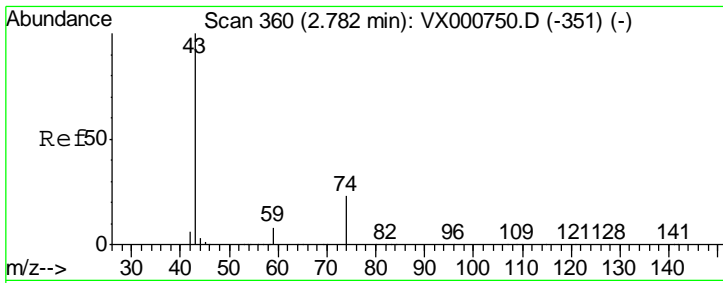
Tgt Ion	Resp	Lower	Upper
53	100		
52	67.9	66.5	99.7
51	25.5	28.8	43.2#



#16
 Acetone
 Concen: 2.18 ug/l
 RT: 2.45 min Scan# 305
 Delta R.T. -0.00 min
 Lab File: VX000899.D
 Acq: 15 Apr 2018 16:11

Tgt Ion	Resp	Lower	Upper
43	100		
58	36.4	24.6	37.0

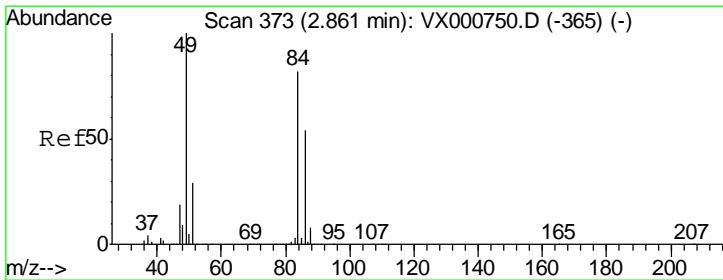
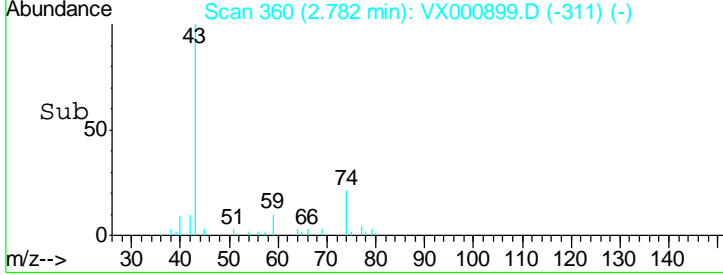
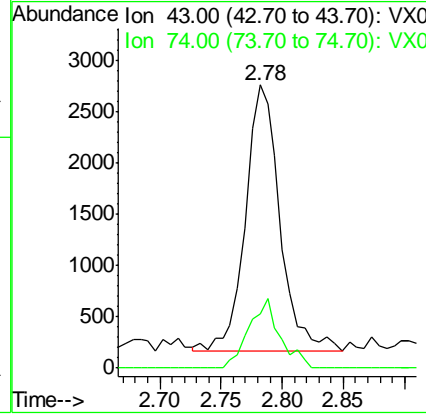
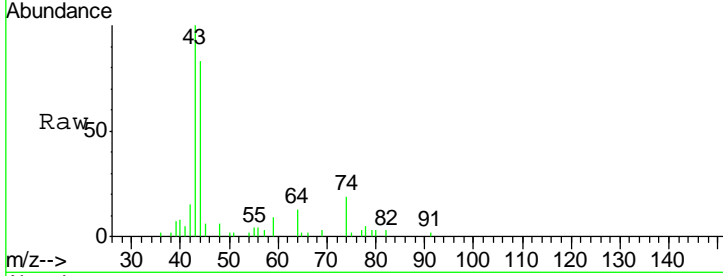




#18
 Methyl Acetate
 Concen: 1.60 ug/l
 RT: 2.78 min Scan# 360
 Delta R.T. -0.00 min
 Lab File: VX000899.D
 Acq: 15 Apr 2018 16:11

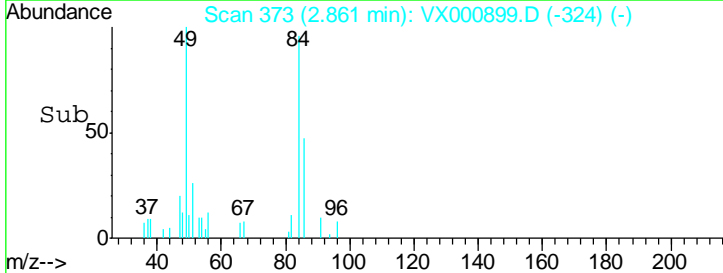
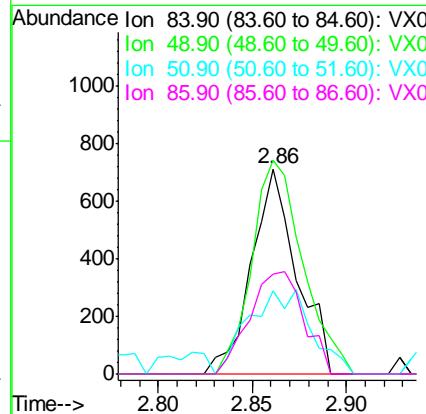
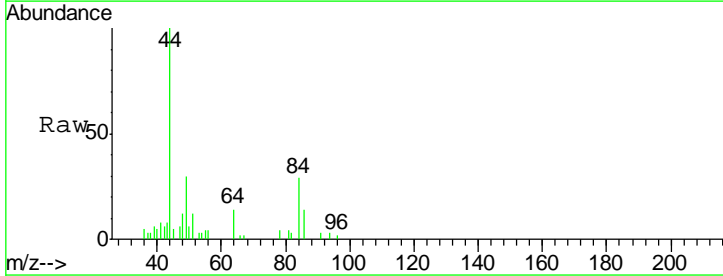
Instrument : MSVOA_X
 ClientSampleId : PB108205ZHE#13 5X

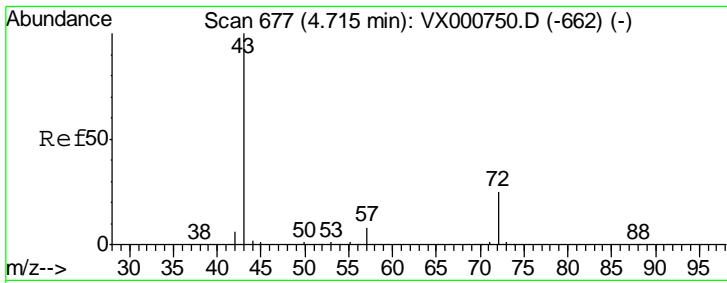
Tgt Ion	Resp	Lower	Upper
43	100		
74	23.6	19.1	28.7



#20
 Methylene Chloride
 Concen: 0.42 ug/l
 RT: 2.86 min Scan# 373
 Delta R.T. -0.00 min
 Lab File: VX000899.D
 Acq: 15 Apr 2018 16:11

Tgt Ion	Resp	Lower	Upper
84	100		
49	104.2	98.1	147.1
51	33.5	28.9	43.3
86	48.9	52.7	79.1#

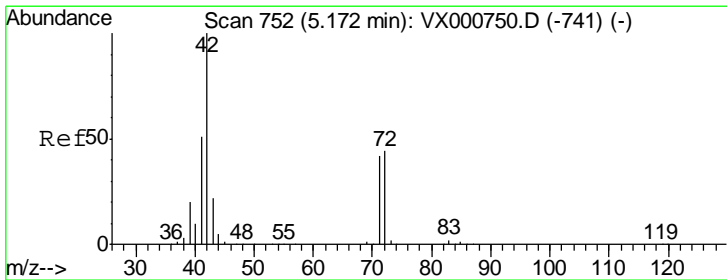
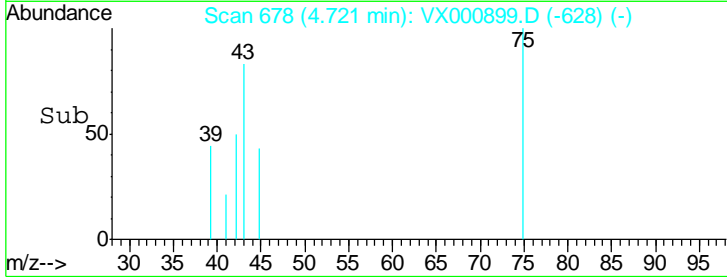
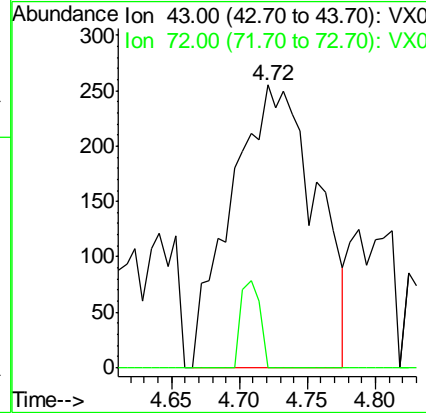
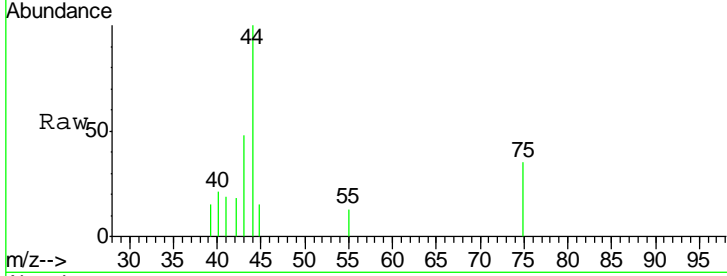




#25
 2-Butanone
 Concen: 0.55 ug/l
 RT: 4.72 min Scan# 678
 Delta R.T. 0.01 min
 Lab File: VX000899.D
 Acq: 15 Apr 2018 16:11

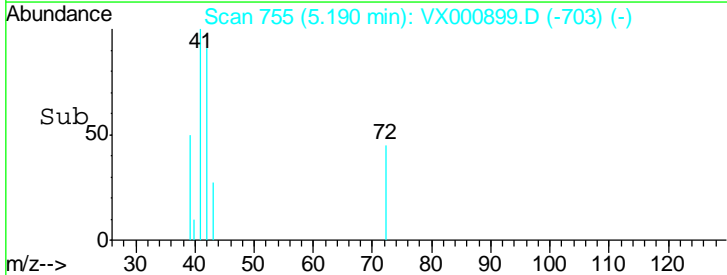
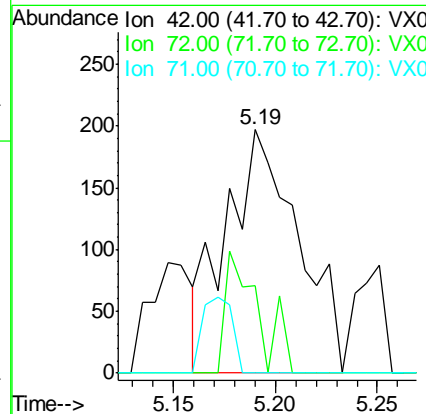
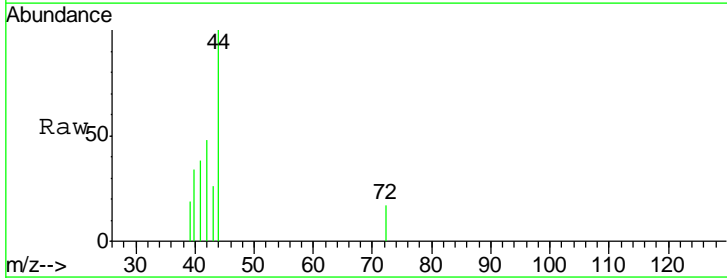
Instrument : MSVOA_X
 ClientSampled : PB108205ZHE#13 5X

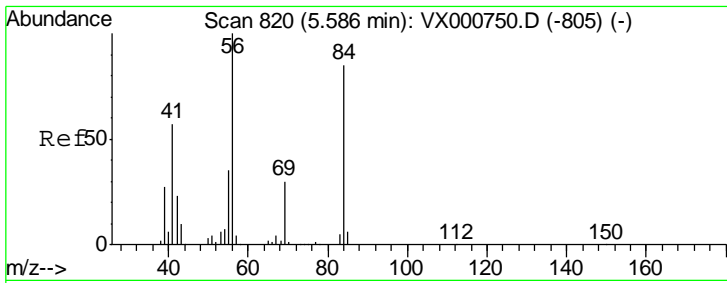
Tgt Ion: 43 Resp: 1107
 Ion Ratio Lower Upper
 43 100
 72 0.0 20.3 30.5#



#29
 Tetrahydrofuran
 Concen: 0.38 ug/l
 RT: 5.19 min Scan# 755
 Delta R.T. 0.02 min
 Lab File: VX000899.D
 Acq: 15 Apr 2018 16:11

Tgt Ion: 42 Resp: 485
 Ion Ratio Lower Upper
 42 100
 72 22.7 35.1 52.7#
 71 13.0 32.8 49.2#

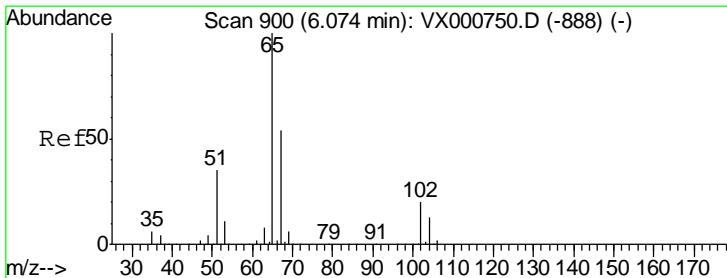
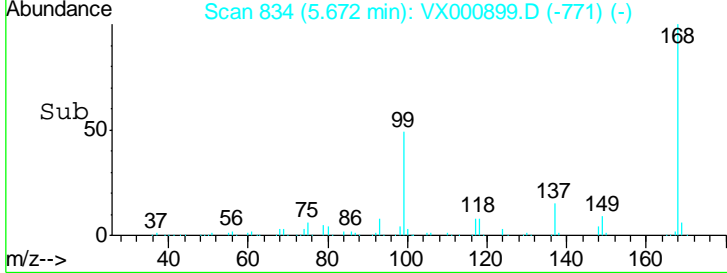
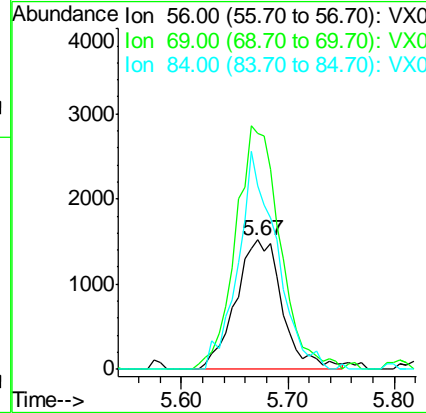
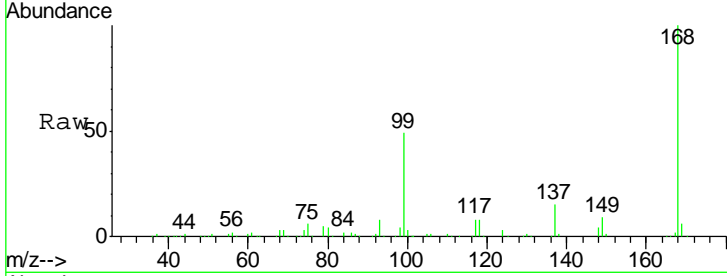




#31
 Cyclohexane
 Concen: 0.99 ug/l
 RT: 5.67 min Scan# 834
 Delta R.T. 0.09 min
 Lab File: VX000899.D
 Acq: 15 Apr 2018 16:11

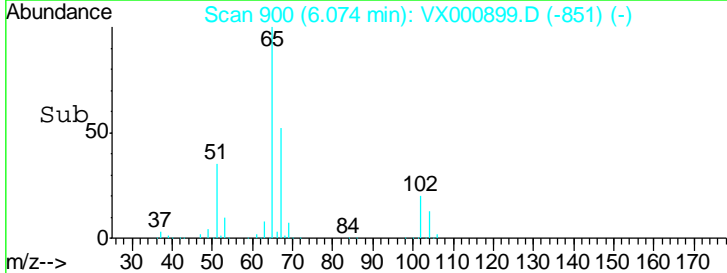
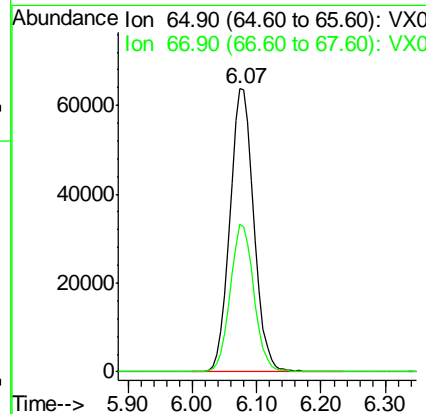
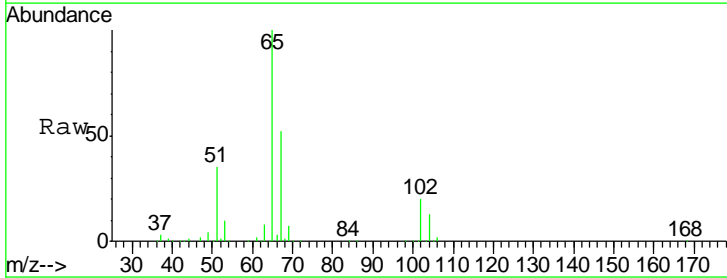
Instrument :
 MSVOA_X
ClientSampleId :
 PB108205ZHE#13 5X

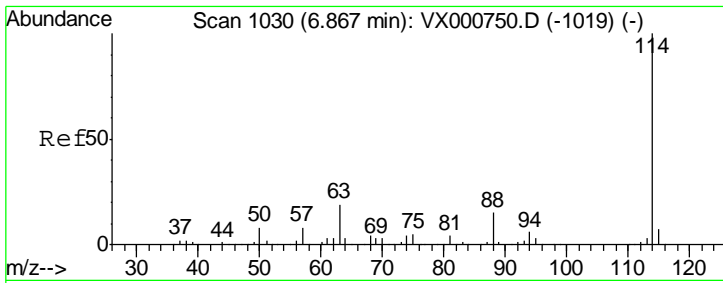
Tgt Ion	Resp	Lower	Upper
56	100		
69	182.6	24.2	36.4#
84	141.9	67.6	101.4#



#33
 1,2-Dichloroethane-d4
 Concen: 47.14 ug/l
 RT: 6.07 min Scan# 900
 Delta R.T. -0.00 min
 Lab File: VX000899.D
 Acq: 15 Apr 2018 16:11

Tgt Ion	Resp	Lower	Upper
65	100		
67	51.3	0.0	103.8

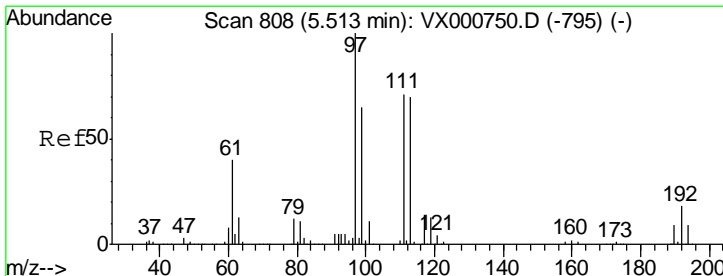
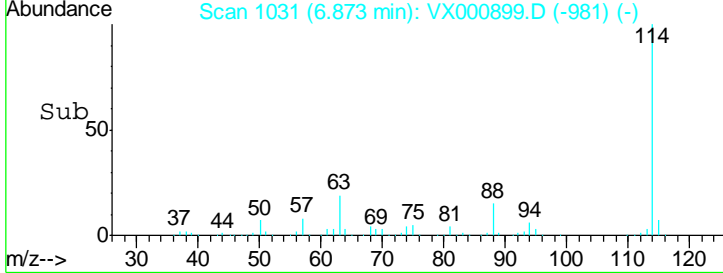
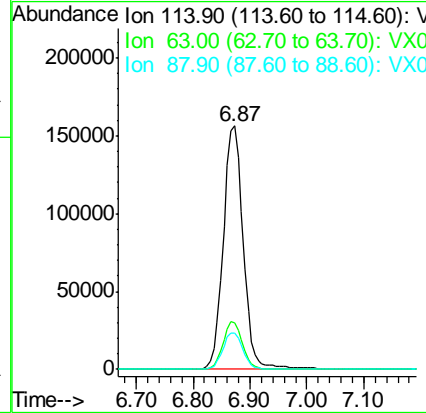
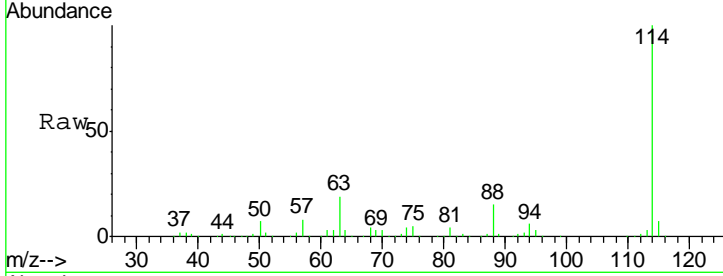




#34
 1,4-Difluorobenzene
 Concen: 50.00 ug/l
 RT: 6.87 min Scan# 1031
 Delta R.T. 0.01 min
 Lab File: VX000899.D
 Acq: 15 Apr 2018 16:11

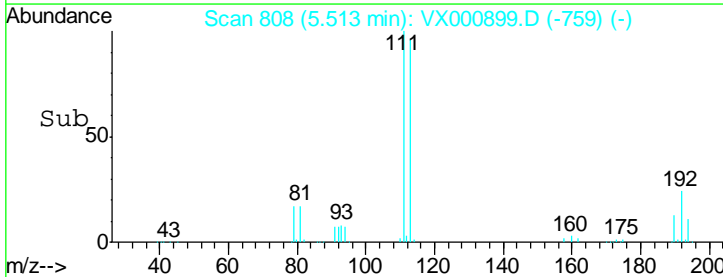
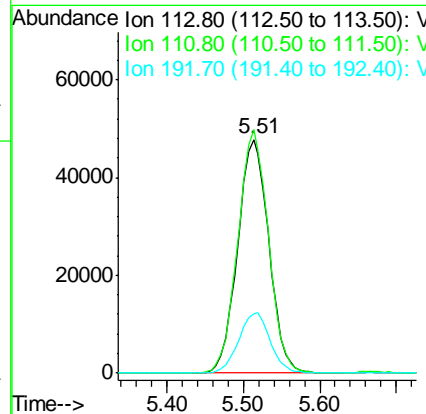
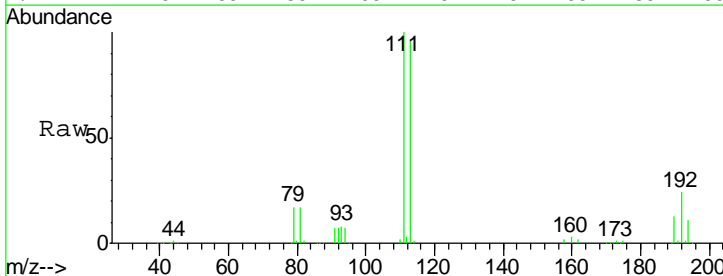
Instrument : MSVOA_X
 ClientSampleId : PB108205ZHE#13 5X

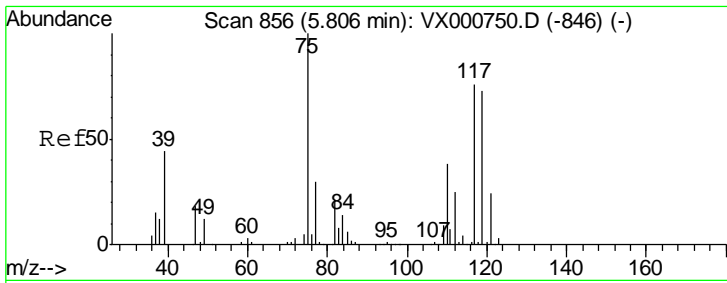
Tgt Ion	Resp	Lower	Upper
114	100		
63	19.1	0.0	38.4
88	14.9	0.0	31.0



#35
 Dibromofluoromethane
 Concen: 45.98 ug/l
 RT: 5.51 min Scan# 808
 Delta R.T. -0.00 min
 Lab File: VX000899.D
 Acq: 15 Apr 2018 16:11

Tgt Ion	Resp	Lower	Upper
113	100		
111	102.1	81.5	122.3
192	25.9	20.4	30.6

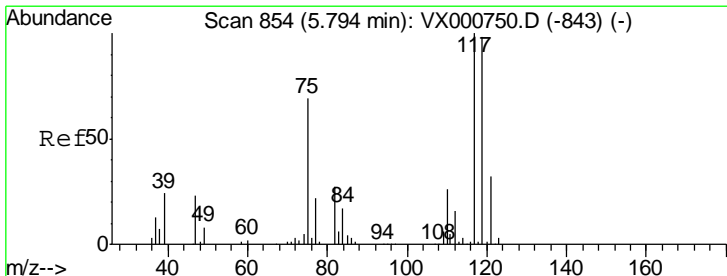
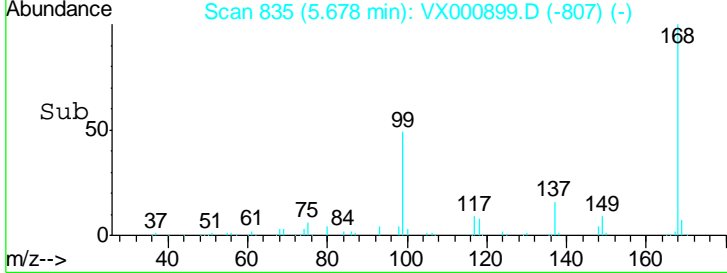
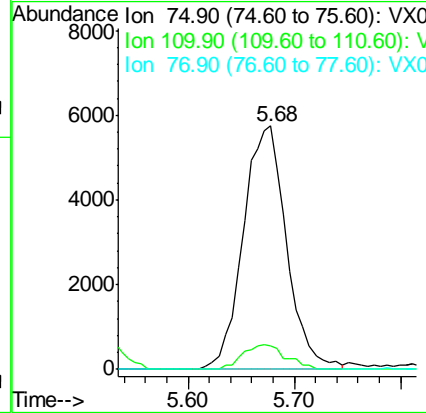
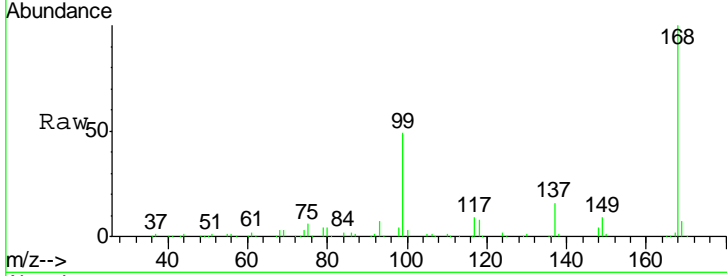




#36
 1,1-Dichloropropene
 Concen: 3.89 ug/l
 RT: 5.68 min Scan# 835
 Delta R.T. -0.13 min
 Lab File: VX000899.D
 Acq: 15 Apr 2018 16:11

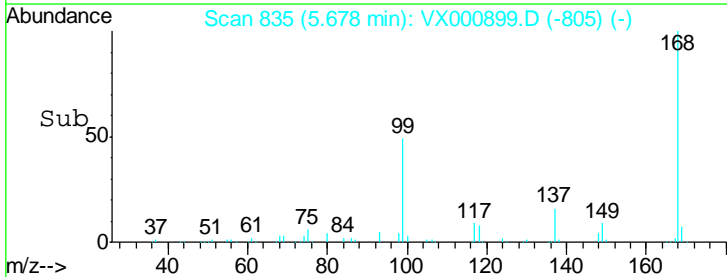
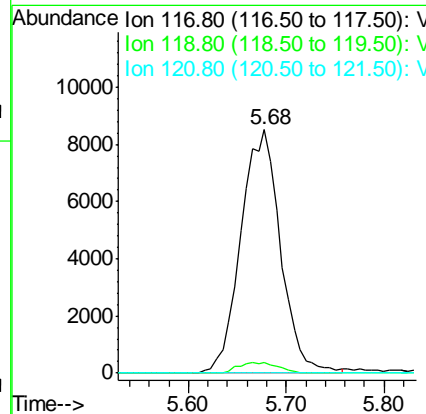
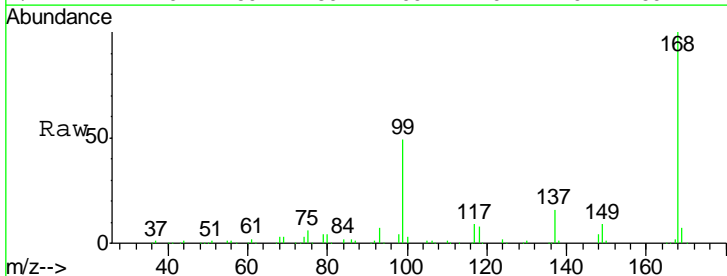
Instrument : MSVOA_X
 ClientSampled : PB108205ZHE#13 5X

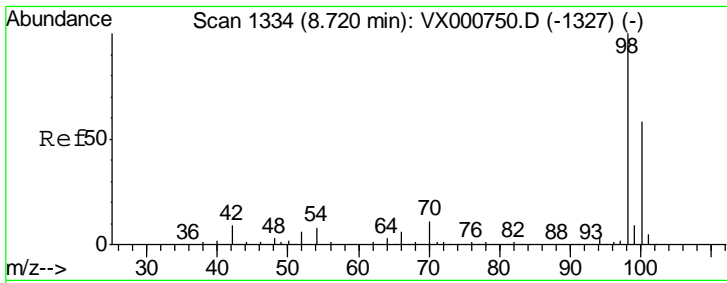
Tgt Ion	Resp	Lower	Upper
75	16339		
110	10.0	19.2	57.6#
77	0.0	25.4	38.2#



#38
 Carbon Tetrachloride
 Concen: 5.09 ug/l
 RT: 5.68 min Scan# 835
 Delta R.T. -0.12 min
 Lab File: VX000899.D
 Acq: 15 Apr 2018 16:11

Tgt Ion	Resp	Lower	Upper
117	23886		
119	4.4	78.4	117.6#
121	0.0	25.4	38.0#

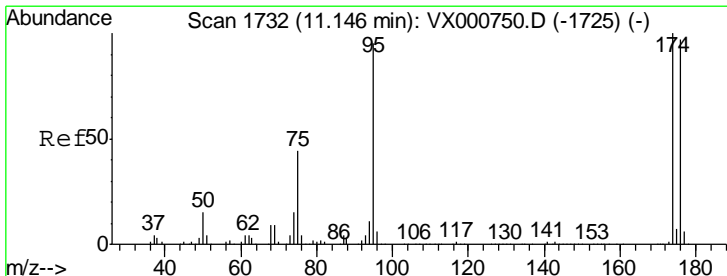
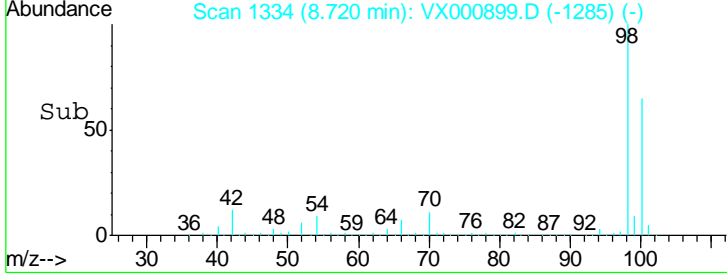
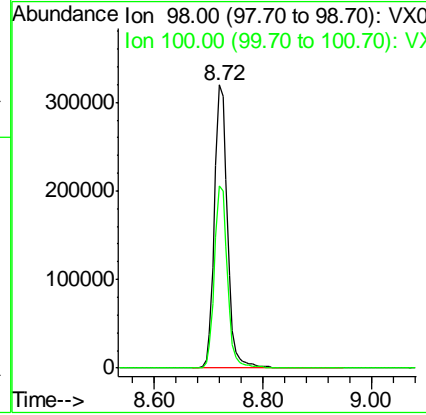
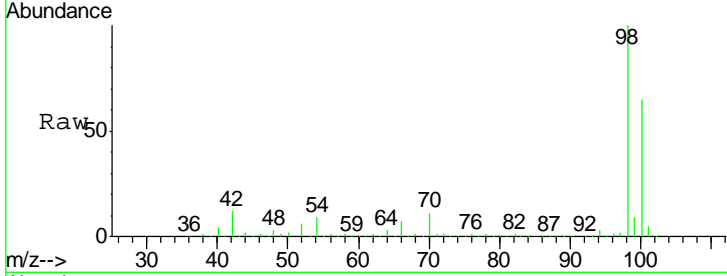




#50
 Toluene-d8
 Concen: 48.42 ug/l
 RT: 8.72 min Scan# 1334
 Delta R.T. -0.00 min
 Lab File: VX000899.D
 Acq: 15 Apr 2018 16:11

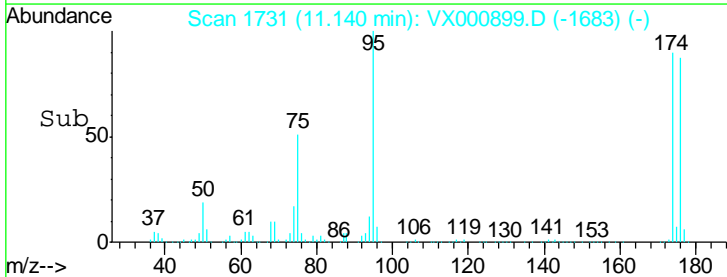
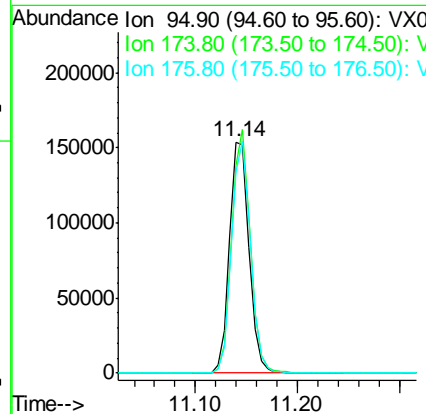
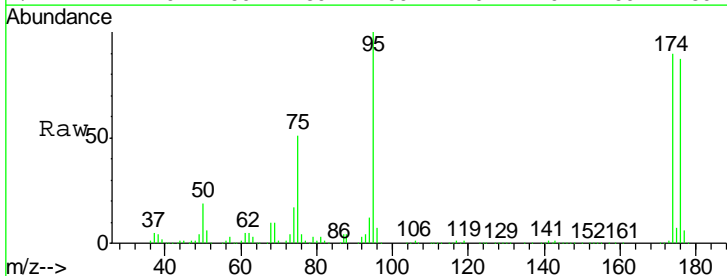
Instrument :
 MSVOA_X
ClientSampled :
 PB108205ZHE#13 5X

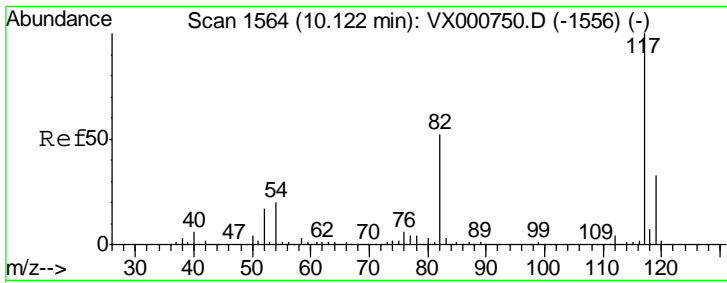
Tgt Ion: 98 Resp: 529089
 Ion Ratio Lower Upper
 98 100
 100 64.5 52.6 79.0



#62
 4-Bromofluorobenzene
 Concen: 45.23 ug/l
 RT: 11.14 min Scan# 1731
 Delta R.T. -0.01 min
 Lab File: VX000899.D
 Acq: 15 Apr 2018 16:11

Tgt Ion: 95 Resp: 204466
 Ion Ratio Lower Upper
 95 100
 174 99.7 0.0 198.4
 176 96.3 0.0 194.4

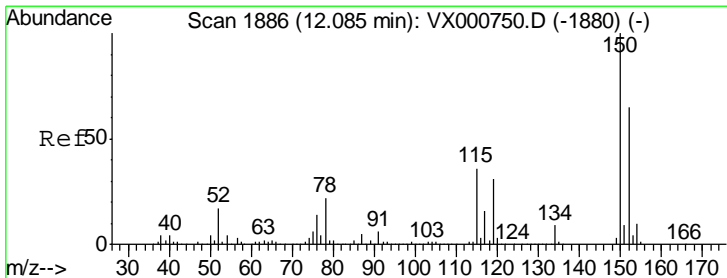
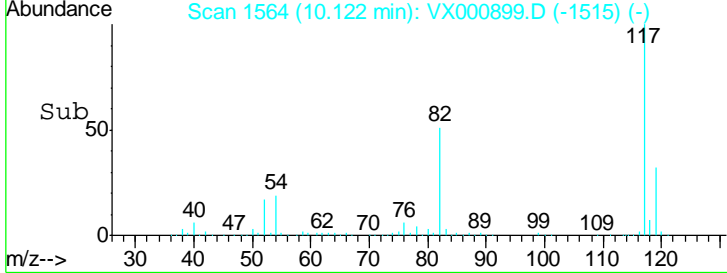
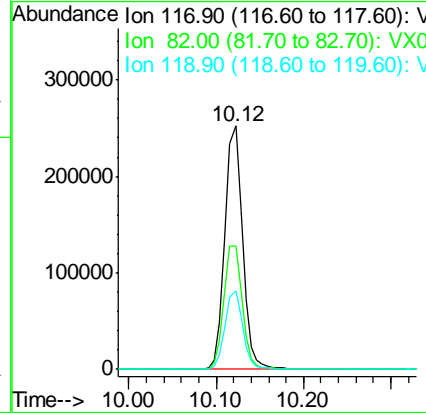
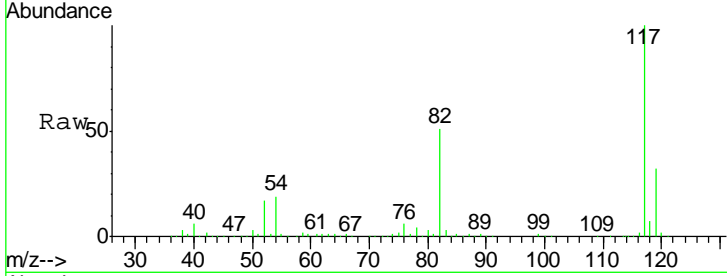




#63
 Chlorobenzene-d5
 Concen: 50.00 ug/l
 RT: 10.12 min Scan# 1564
 Delta R.T. -0.00 min
 Lab File: VX000899.D
 Acq: 15 Apr 2018 16:11

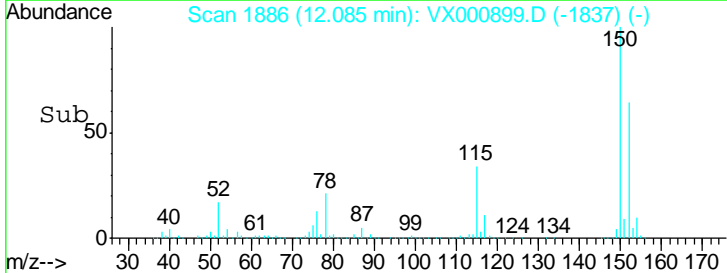
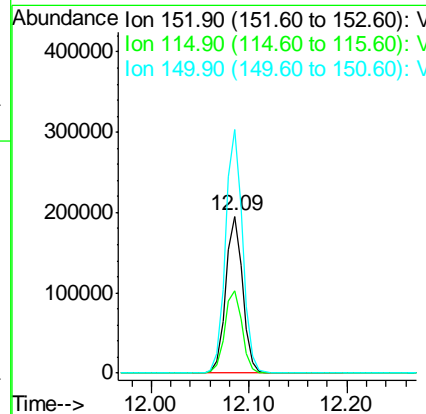
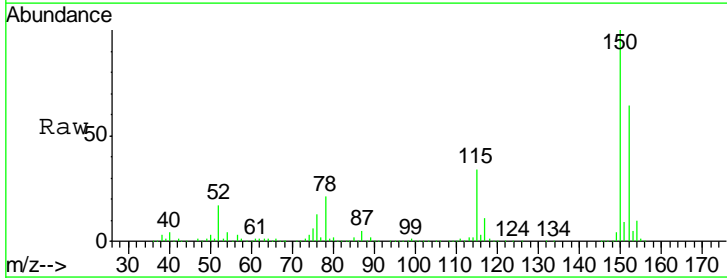
Instrument : MSVOA_X
 ClientSampled : PB108205ZHE#13 5X

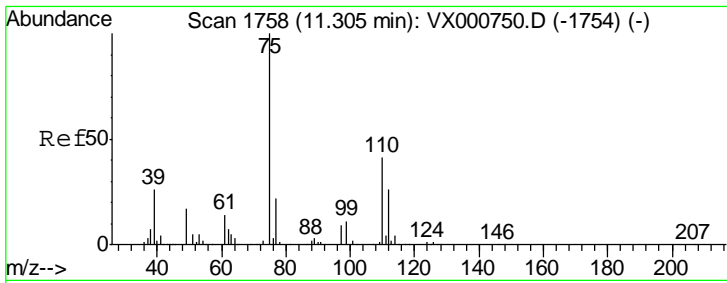
Tgt Ion	Resp	Lower	Upper
117	353771		
82	50.8	41.9	62.9
119	32.2	26.0	39.0



#72
 1,4-Dichlorobenzene-d4
 Concen: 50.00 ug/l
 RT: 12.09 min Scan# 1886
 Delta R.T. -0.00 min
 Lab File: VX000899.D
 Acq: 15 Apr 2018 16:11

Tgt Ion	Resp	Lower	Upper
152	234008		
115	53.9	37.9	113.7
150	155.9	0.0	348.0

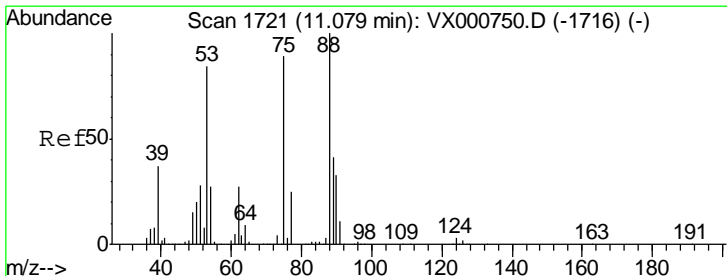
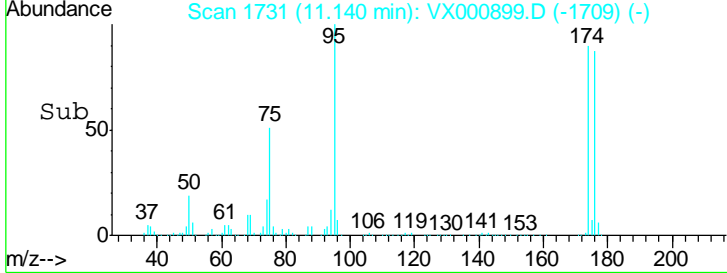
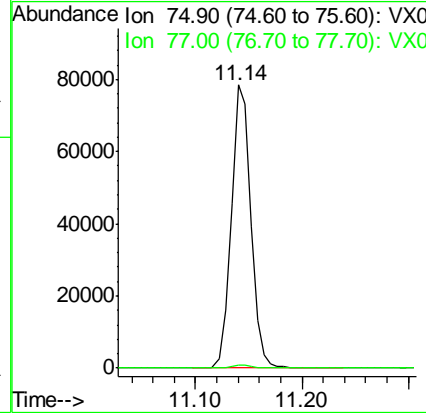
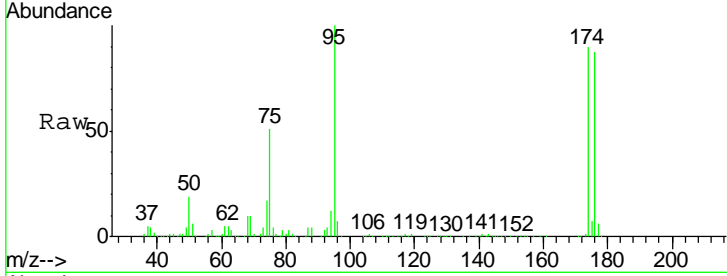




#76
 1,2,3-Trichloropropane
 Concen: 24.99 ug/l
 RT: 11.14 min Scan# 1731
 Delta R.T. -0.16 min
 Lab File: VX000899.D
 Acq: 15 Apr 2018 16:11

Instrument : MSVOA_X
 ClientSampled : PB108205ZHE#13 5X

Tgt Ion: 75 Resp: 100870
 Ion Ratio Lower Upper
 75 100
 77 1.1 20.5 61.5#



#81
 trans-1,4-Dichloro-2-butene
 Concen: 68.75 ug/l
 RT: 11.14 min Scan# 1731
 Delta R.T. 0.06 min
 Lab File: VX000899.D
 Acq: 15 Apr 2018 16:11

Tgt Ion: 75 Resp: 100870
 Ion Ratio Lower Upper
 75 100
 53 0.0 75.4 113.0#
 89 0.0 40.9 61.3#

