

Data Path : W:\HPCHEM1\MSVOA X\DATA\VX041518\
 Data File : VX000890.D
 Acq On : 15 Apr 2018 12:22
 Operator : JC/MD
 Sample : VX0415WBL01
 Misc : 5.0mL/MSVOA X/WATER
 ALS Vial : 3 Sample Multiplier: 1

Instrument :
 MSVOA_X
 ClientSampleId :
 VX0415WBL01

Quant Time: Apr 16 07:53:47 2018
 Quant Method : W:\HPCHEM1\MSVOA_X\METHOD\82X041018W.M
 Quant Title : SW846 8260
 QLast Update : Tue Apr 10 15:49:28 2018
 Response via : Initial Calibration

Internal Standards	R.T.	QIon	Response	Conc	Units	Dev(Min)
1) Pentafluorobenzene	5.67	168	268134	50.00	ug/l	0.00
34) 1,4-Difluorobenzene	6.87	114	359897	50.00	ug/l	0.00
63) Chlorobenzene-d5	10.12	117	322357	50.00	ug/l	0.00
72) 1,4-Dichlorobenzene-d4	12.09	152	203870	50.00	ug/l	0.00

System Monitoring Compounds

33) 1,2-Dichloroethane-d4	6.07	65	155550	46.01	ug/l	0.00
Spiked Amount	50.000		Recovery	=	92.02%	
35) Dibromofluoromethane	5.51	113	127027	45.81	ug/l	0.00
Spiked Amount	50.000		Recovery	=	91.62%	
50) Toluene-d8	8.72	98	495051	47.95	ug/l	0.00
Spiked Amount	50.000		Recovery	=	95.90%	
62) 4-Bromofluorobenzene	11.14	95	183272	42.91	ug/l	0.00
Spiked Amount	50.000		Recovery	=	85.82%	

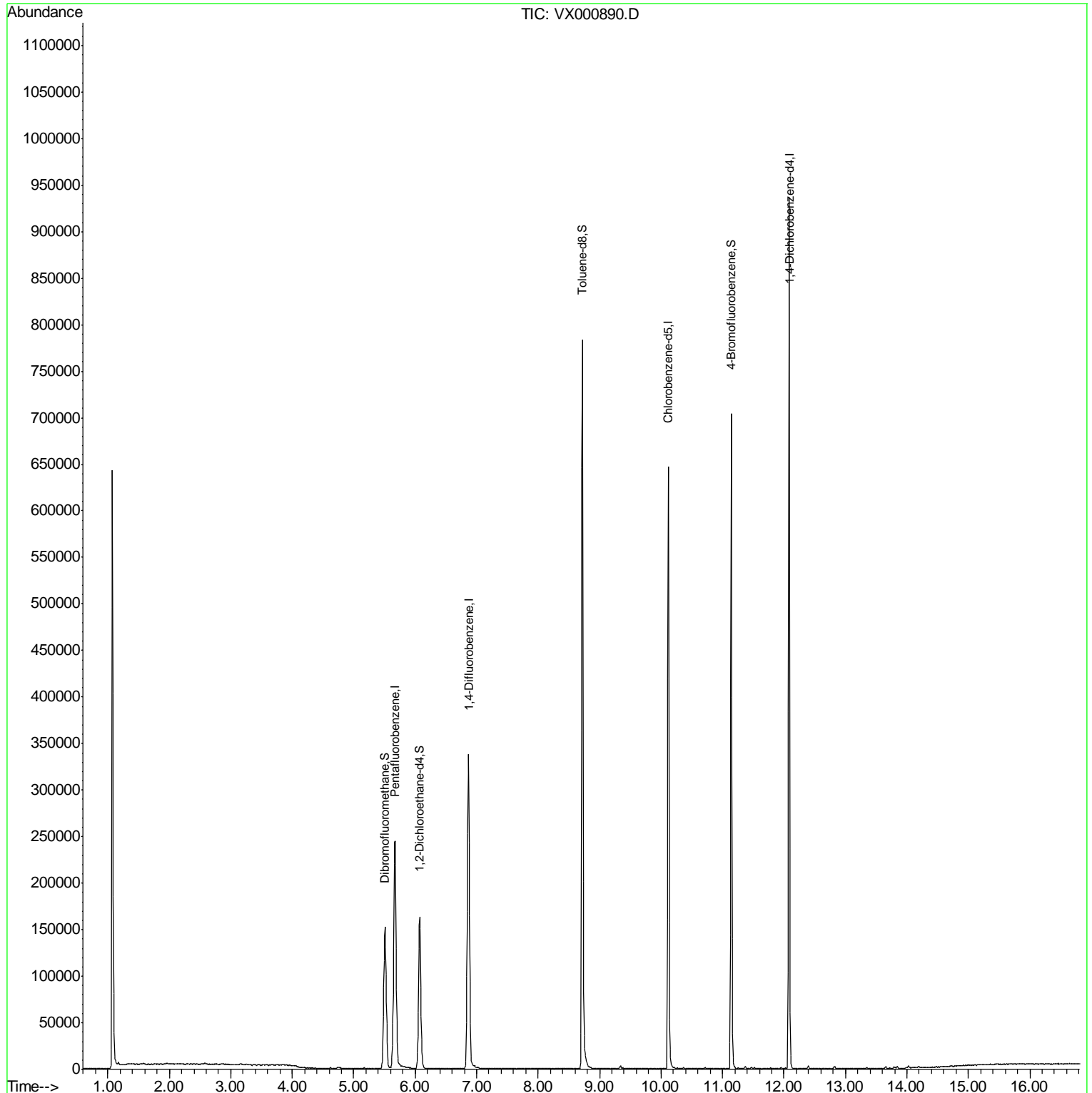
Target Compounds Qvalue

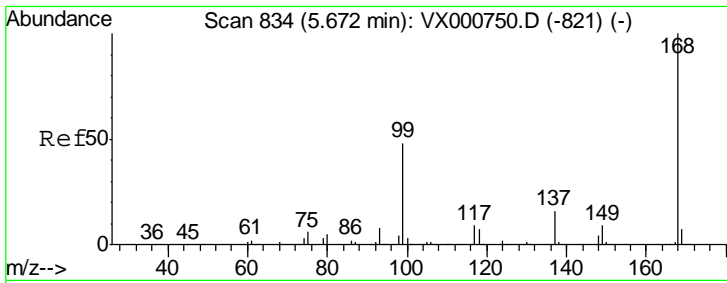
(#) = qualifier out of range (m) = manual integration (+) = signals summed

Data Path : W:\HPCHEM1\MSVOA X\DATA\VX041518\
Data File : VX000890.D
Acq On : 15 Apr 2018 12:22
Operator : JC/MD
Sample : VX0415WBL01
Misc : 5.0mL/MSVOA X/WATER
ALS Vial : 3 Sample Multiplier: 1

Instrument :
MSVOA_X
ClientSampled :
VX0415WBL01

Quant Time: Apr 16 07:53:47 2018
Quant Method : W:\HPCHEM1\MSVOA_X\METHOD\82X041018W.M
Quant Title : SW846 8260
QLast Update : Tue Apr 10 15:49:28 2018
Response via : Initial Calibration



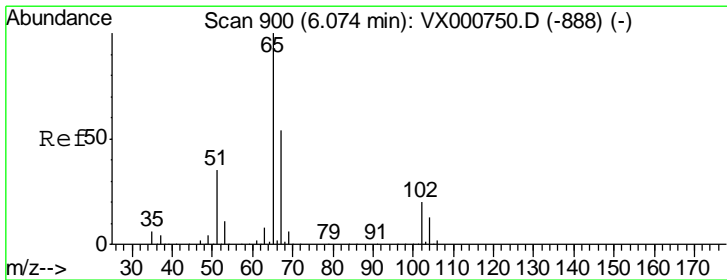
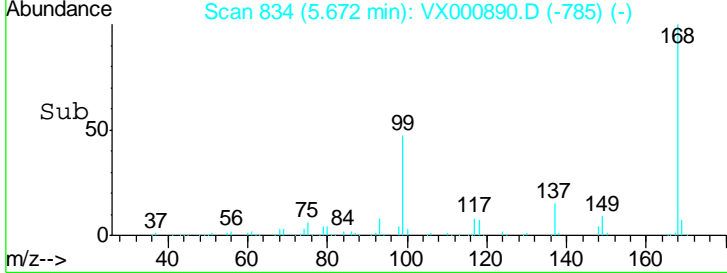
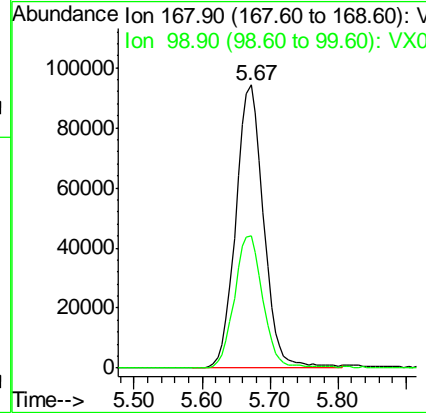
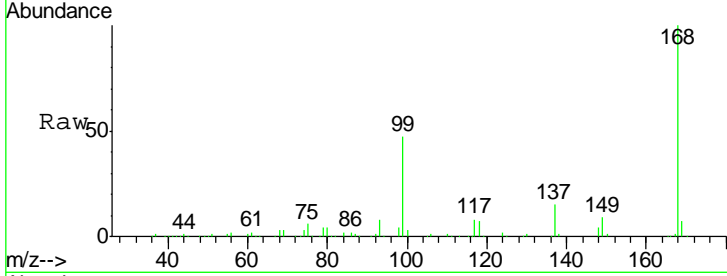


#1
 Pentafluorobenzene
 Concen: 50.00 ug/l
 RT: 5.67 min Scan# 834
 Delta R.T. 0.00 min
 Lab File: VX000890.D
 Acq: 15 Apr 2018 12:22

Instrument :
 MSVOA_X
ClientSampled :
 VX0415WBL01

Tgt Ion: 168 Resp: 268134

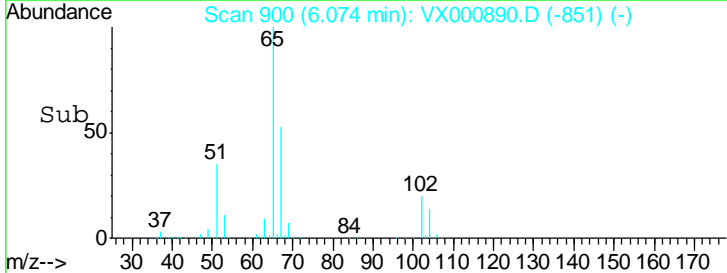
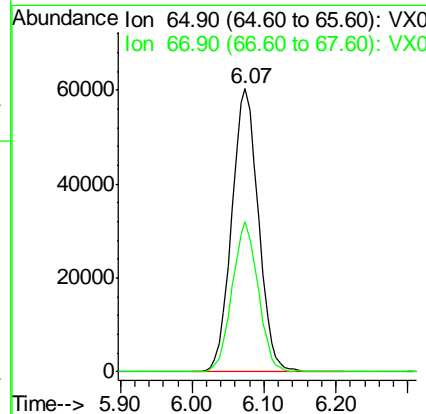
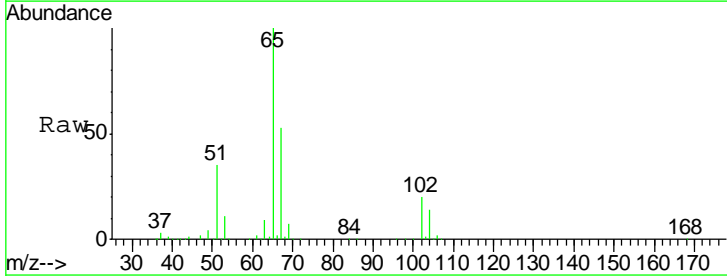
Ion	Ratio	Lower	Upper
168	100		
99	46.5	38.3	57.5

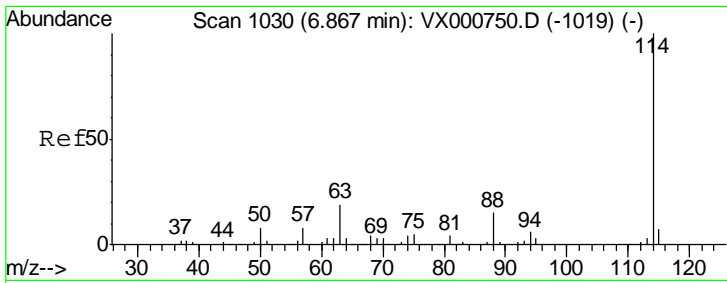


#33
 1,2-Dichloroethane-d4
 Concen: 46.01 ug/l
 RT: 6.07 min Scan# 900
 Delta R.T. 0.00 min
 Lab File: VX000890.D
 Acq: 15 Apr 2018 12:22

Tgt Ion: 65 Resp: 155550

Ion	Ratio	Lower	Upper
65	100		
67	51.8	0.0	103.8

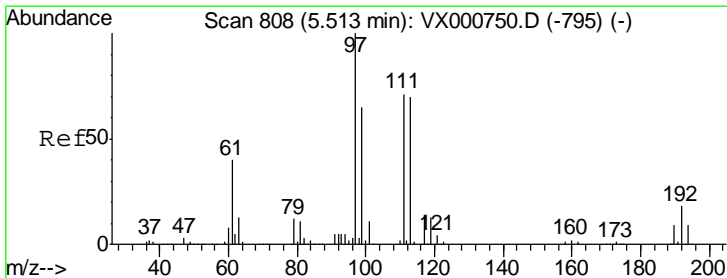
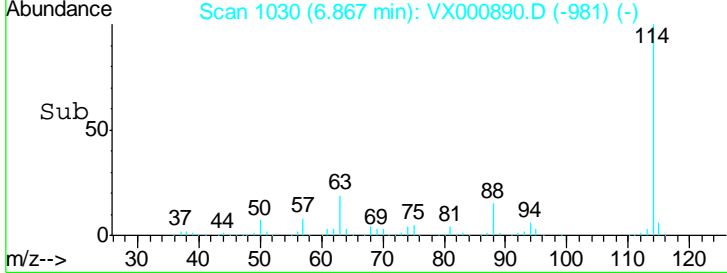
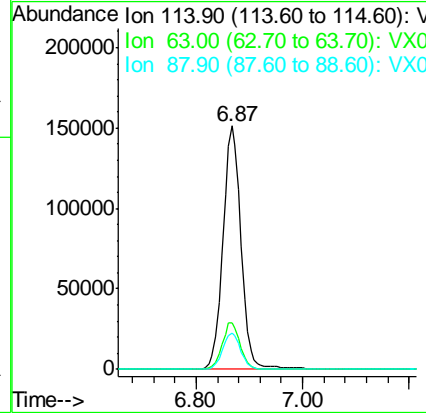
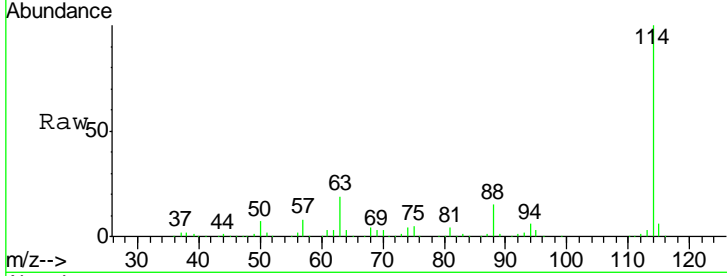




#34
 1,4-Difluorobenzene
 Concen: 50.00 ug/l
 RT: 6.87 min Scan# 1030
 Delta R.T. 0.00 min
 Lab File: VX000890.D
 Acq: 15 Apr 2018 12:22

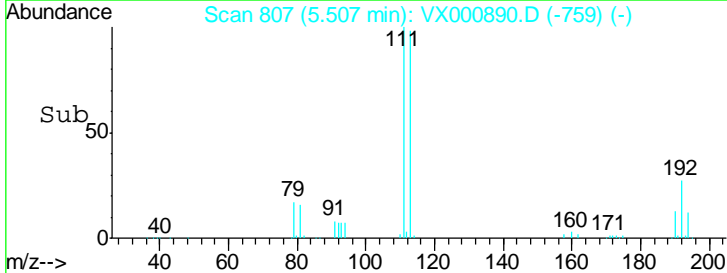
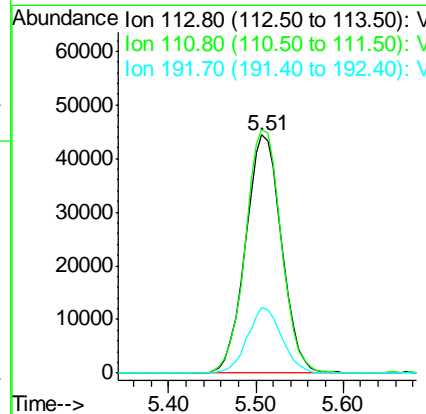
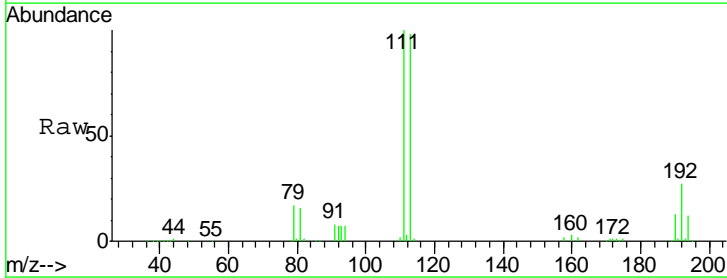
Instrument : MSVOA_X
 ClientSampleId : VX0415WBL01

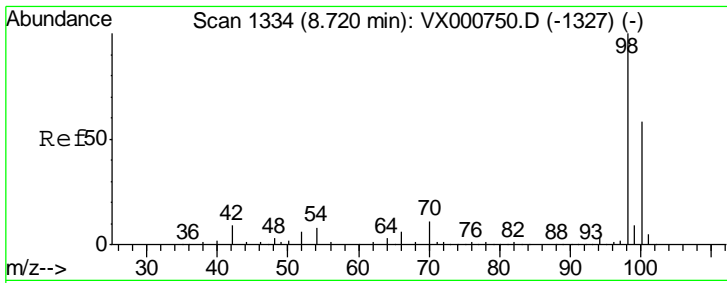
Tgt Ion	Resp	Lower	Upper
114	100		
63	19.0	0.0	38.4
88	14.8	0.0	31.0



#35
 Dibromofluoromethane
 Concen: 45.81 ug/l
 RT: 5.51 min Scan# 807
 Delta R.T. -0.01 min
 Lab File: VX000890.D
 Acq: 15 Apr 2018 12:22

Tgt Ion	Resp	Lower	Upper
113	100		
111	101.8	81.5	122.3
192	26.1	20.4	30.6

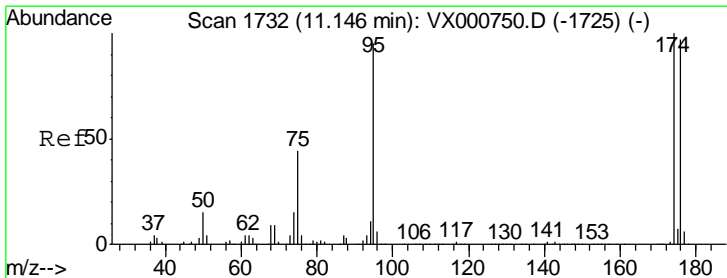
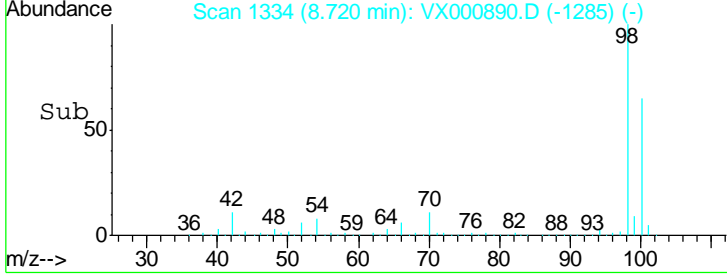
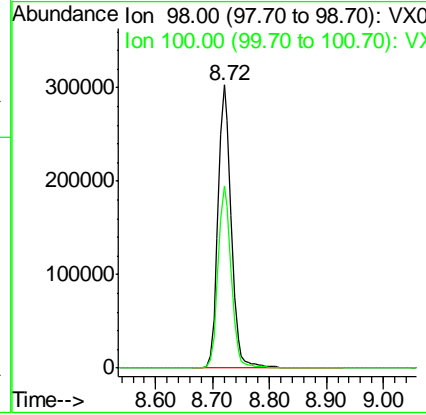
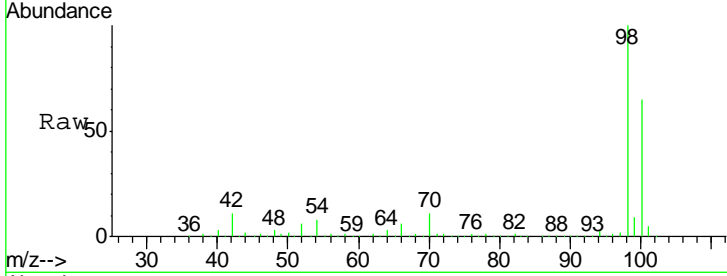




#50
 Toluene-d8
 Concen: 47.95 ug/l
 RT: 8.72 min Scan# 1334
 Delta R.T. 0.00 min
 Lab File: VX000890.D
 Acq: 15 Apr 2018 12:22

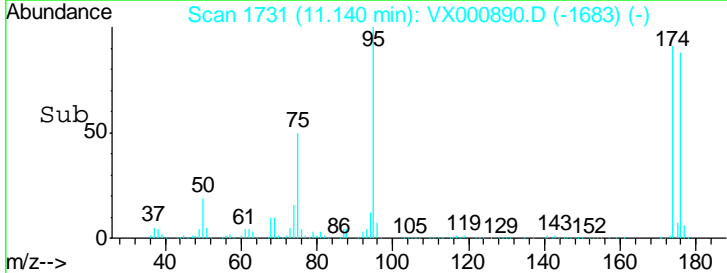
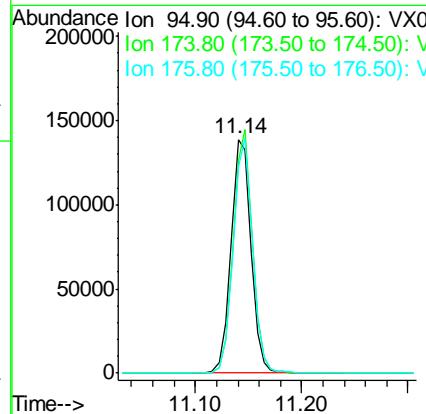
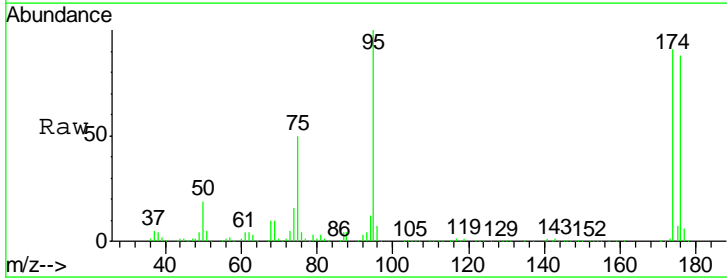
Instrument :
 MSVOA_X
ClientSampled :
 VX0415WBL01

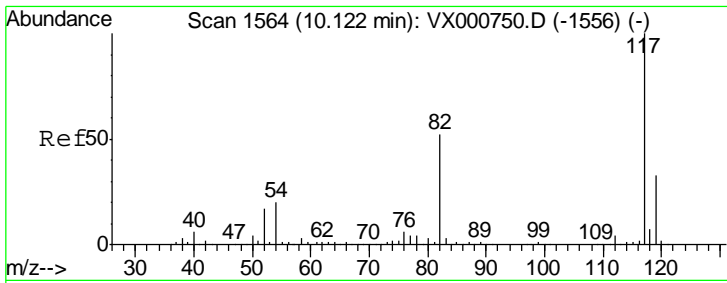
Tgt Ion: 98 Resp: 495051
 Ion Ratio Lower Upper
 98 100
 100 64.4 52.6 79.0



#62
 4-Bromofluorobenzene
 Concen: 42.91 ug/l
 RT: 11.14 min Scan# 1731
 Delta R.T. -0.01 min
 Lab File: VX000890.D
 Acq: 15 Apr 2018 12:22

Tgt Ion: 95 Resp: 183272
 Ion Ratio Lower Upper
 95 100
 174 99.9 0.0 198.4
 176 96.8 0.0 194.4

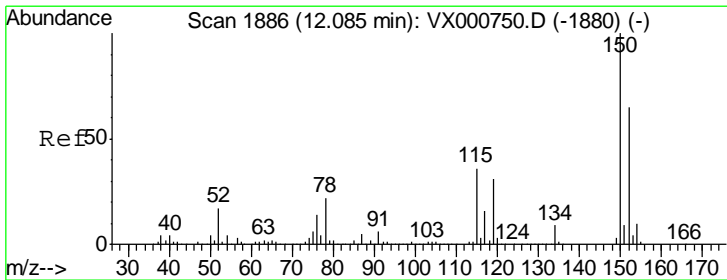
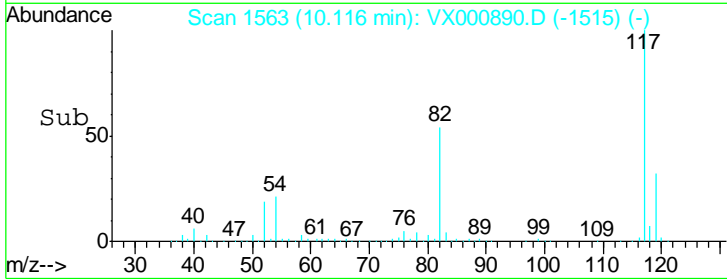
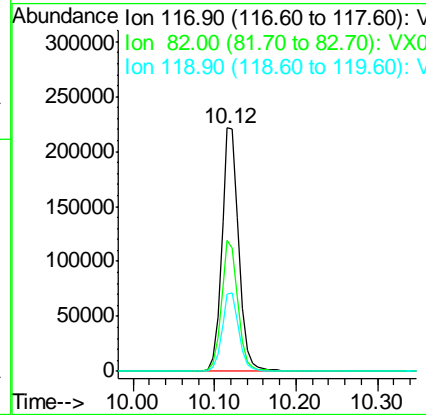
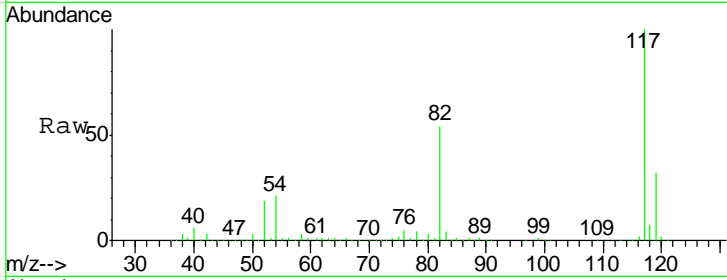




#63
 Chlorobenzene-d5
 Concen: 50.00 ug/l
 RT: 10.12 min Scan# 1563
 Delta R.T. -0.01 min
 Lab File: VX000890.D
 Acq: 15 Apr 2018 12:22

Instrument :
 MSVOA_X
 ClientSampled :
 VX0415WBL01

Tgt Ion	Resp	Lower	Upper
117	322357		
82	54.1	41.9	62.9
119	31.8	26.0	39.0



#72
 1,4-Dichlorobenzene-d4
 Concen: 50.00 ug/l
 RT: 12.09 min Scan# 1886
 Delta R.T. 0.00 min
 Lab File: VX000890.D
 Acq: 15 Apr 2018 12:22

Tgt Ion	Resp	Lower	Upper
152	203870		
115	53.0	37.9	113.7
150	156.7	0.0	348.0

