

Data Path : W:\HPCHEM1\MSVOA X\DATA\VX041618\
 Data File : VX000935.D
 Acq On : 16 Apr 2018 22:13
 Operator : JC/MD
 Sample : J2260-04
 Misc : 4.58g/10mL/100uL/5mL/MSVOA_X/MEOH
 ALS Vial : 24 Sample Multiplier: 1

Instrument :
 MSVOA_X
ClientSampleId :
 S-4-0-6-BELOW-GRADE(C)

Quant Time: Apr 17 10:35:00 2018
 Quant Method : W:\HPCHEM1\MSVOA_X\METHOD\82X041018W.M
 Quant Title : SW846 8260
 QLast Update : Tue Apr 10 15:49:28 2018
 Response via : Initial Calibration

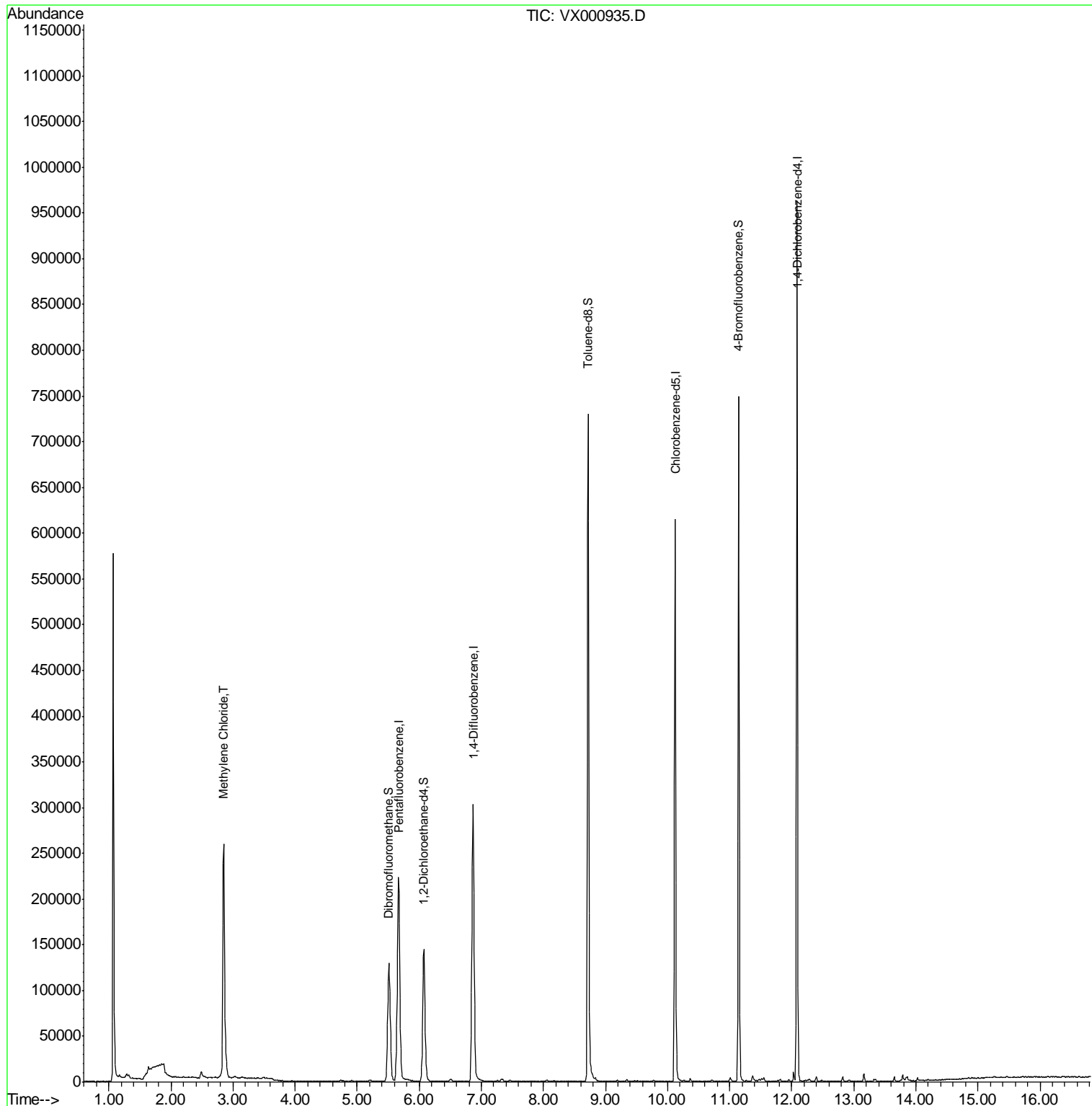
Internal Standards	R.T.	QIon	Response	Conc	Units	Dev(Min)
1) Pentafluorobenzene	5.67	168	241213	50.00	ug/l	0.00
34) 1,4-Difluorobenzene	6.87	114	327412	50.00	ug/l	0.00
63) Chlorobenzene-d5	10.12	117	309718	50.00	ug/l	0.00
72) 1,4-Dichlorobenzene-d4	12.09	152	206869	50.00	ug/l	0.00
System Monitoring Compounds						
33) 1,2-Dichloroethane-d4	6.07	65	142006	46.69	ug/l	0.00
Spiked Amount	50.000		Recovery	=	93.38%	
35) Dibromofluoromethane	5.51	113	108118	42.86	ug/l	0.00
Spiked Amount	50.000		Recovery	=	85.72%	
50) Toluene-d8	8.72	98	456108	48.56	ug/l	0.00
Spiked Amount	50.000		Recovery	=	97.12%	
62) 4-Bromofluorobenzene	11.15	95	184918	47.59	ug/l	0.00
Spiked Amount	50.000		Recovery	=	95.18%	
Target Compounds						Qvalue
20) Methylene Chloride	2.85	84	134344	55.07	ug/l	98

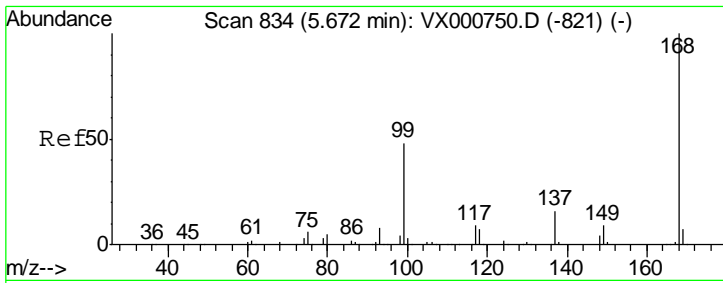
(#) = qualifier out of range (m) = manual integration (+) = signals summed

Data Path : W:\HPCHEM1\MSVOA X\DATA\VX041618\
 Data File : VX000935.D
 Acq On : 16 Apr 2018 22:13
 Operator : JC/MD
 Sample : J2260-04
 Misc : 4.58µ/10mL/100uL/5mL/MSVOA_X/MEOH
 ALS Vial : 24 Sample Multiplier: 1

Instrument :
 MSVOA_X
 ClientSampled :
 S-4-0-6-BELOW-GRADE(C)

Quant Time: Apr 17 10:35:00 2018
 Quant Method : W:\HPCHEM1\MSVOA_X\METHOD\82X041018W.M
 Quant Title : SW846 8260
 QLast Update : Tue Apr 10 15:49:28 2018
 Response via : Initial Calibration



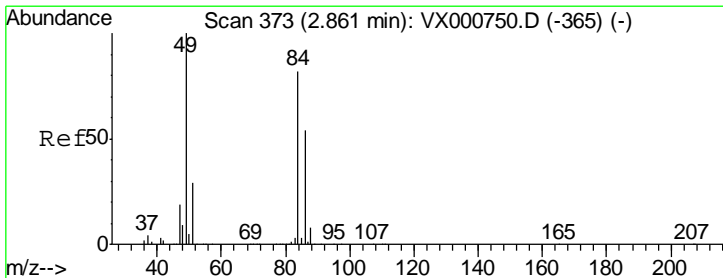
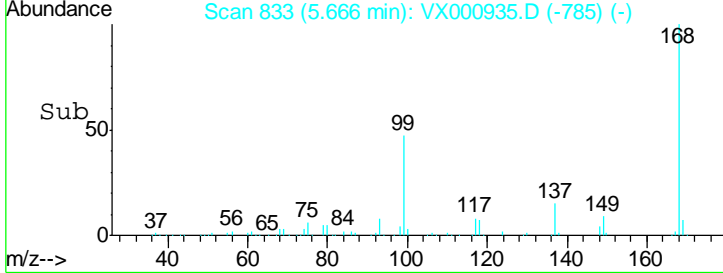
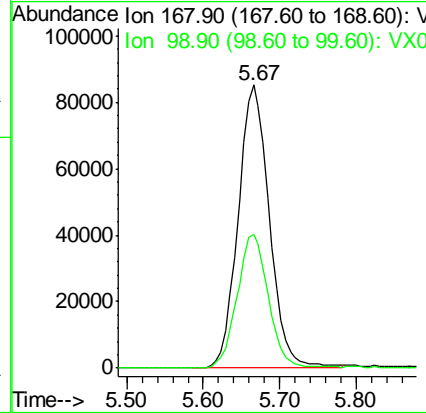
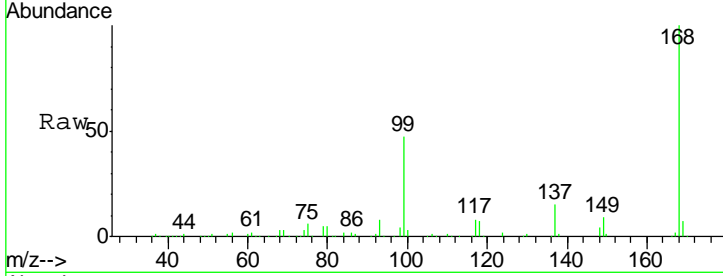


#1
 Pentafluorobenzene
 Concen: 50.00 ug/l
 RT: 5.67 min Scan# 833
 Delta R.T. -0.01 min
 Lab File: VX000935.D
 Acq: 16 Apr 2018 22:13

Instrument :
 MSVOA_X
 ClientSampleId :
 S-4-0-6-BELOW-GRADE(C)

Tot Ion: 168 Resp: 241213

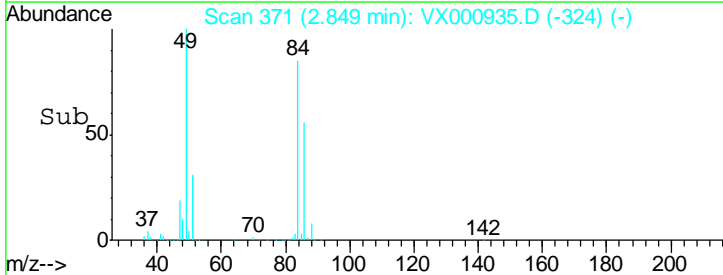
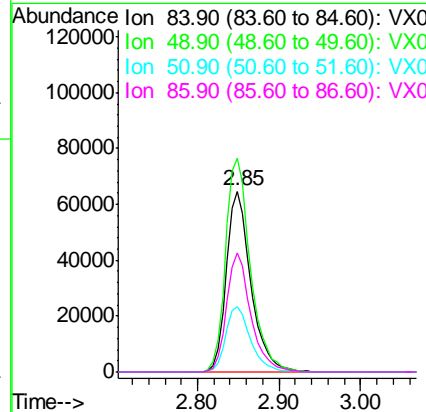
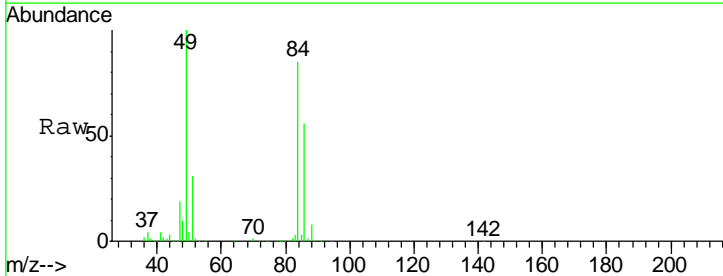
Ion	Ratio	Lower	Upper
168	100		
99	47.3	38.3	57.5

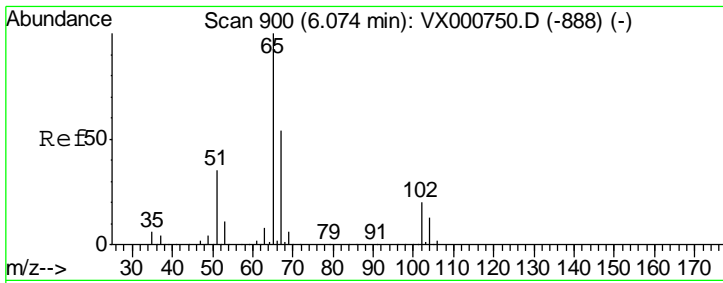


#20
 Methylene Chloride
 Concen: 55.07 ug/l
 RT: 2.85 min Scan# 371
 Delta R.T. -0.01 min
 Lab File: VX000935.D
 Acq: 16 Apr 2018 22:13

Tgt Ion: 84 Resp: 134344

Ion	Ratio	Lower	Upper
84	100		
49	117.9	98.1	147.1
51	36.1	28.9	43.3
86	66.1	52.7	79.1

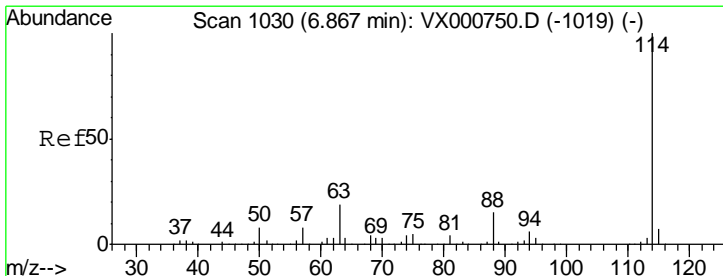
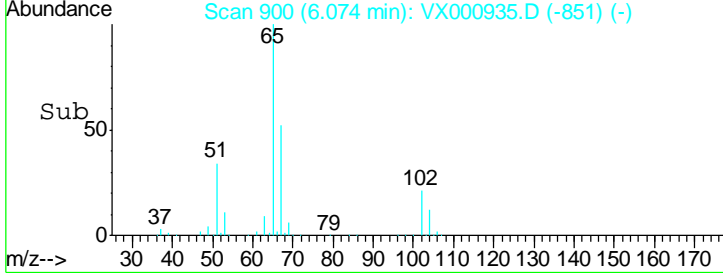
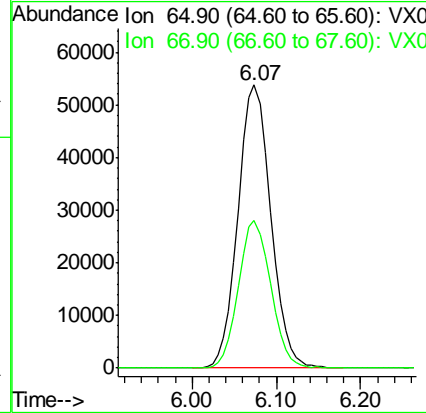
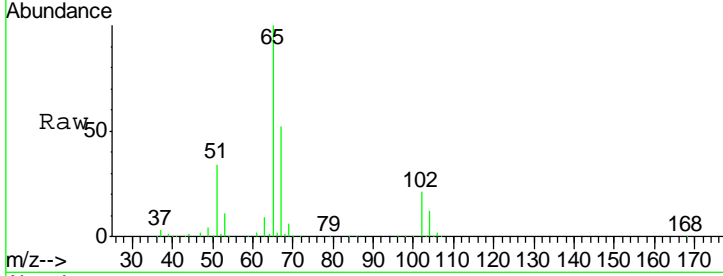




#33
 1,2-Dichloroethane-d4
 Concen: 46.69 ug/l
 RT: 6.07 min Scan# 900
 Delta R.T. -0.00 min
 Lab File: VX000935.D
 Acq: 16 Apr 2018 22:13

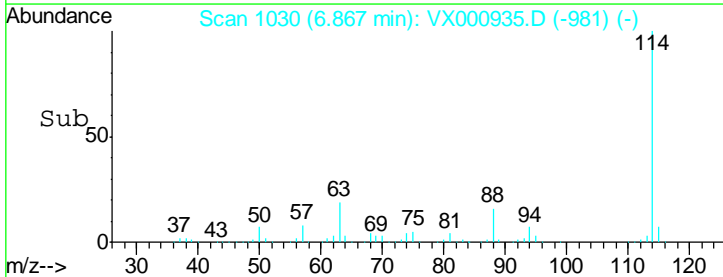
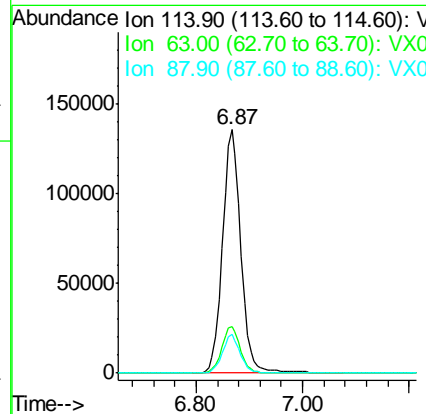
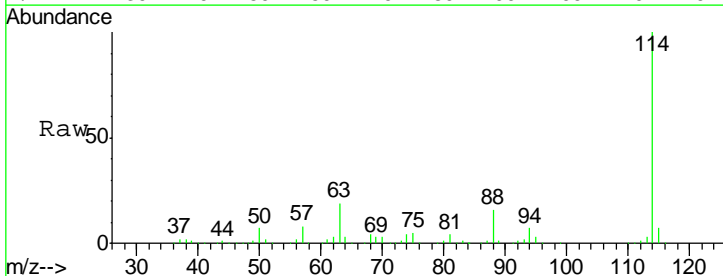
Instrument :
 MSVOA_X
ClientSampled :
 S-4-0-6-BELOW-GRADE(C)

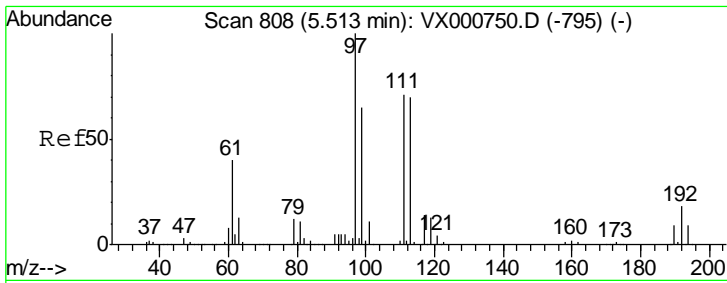
Tgt Ion	Resp	Lower	Upper
65	142006		
67	51.6	0.0	103.8



#34
 1,4-Difluorobenzene
 Concen: 50.00 ug/l
 RT: 6.87 min Scan# 1030
 Delta R.T. -0.00 min
 Lab File: VX000935.D
 Acq: 16 Apr 2018 22:13

Tgt Ion	Resp	Lower	Upper
114	327412		
63	19.2	0.0	38.4
88	15.9	0.0	31.0

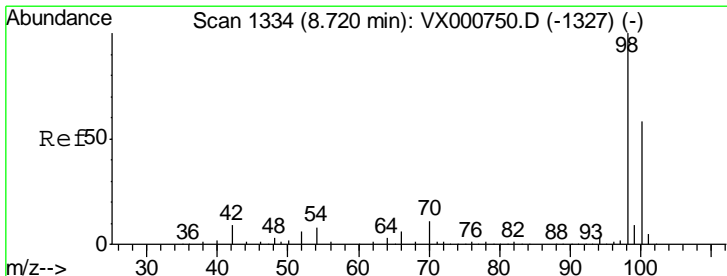
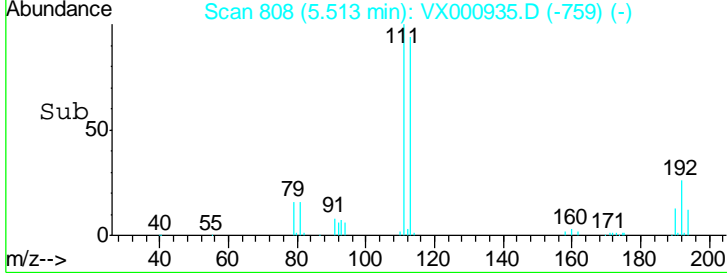
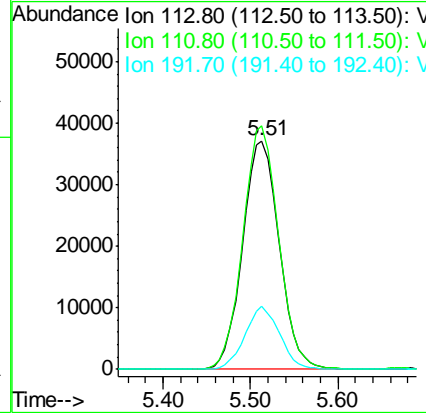
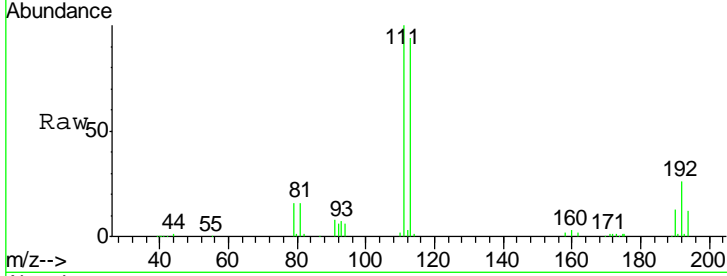




#35
 Dibromofluoromethane
 Concen: 42.86 ug/l
 RT: 5.51 min Scan# 808
 Delta R.T. -0.00 min
 Lab File: VX000935.D
 Acq: 16 Apr 2018 22:13

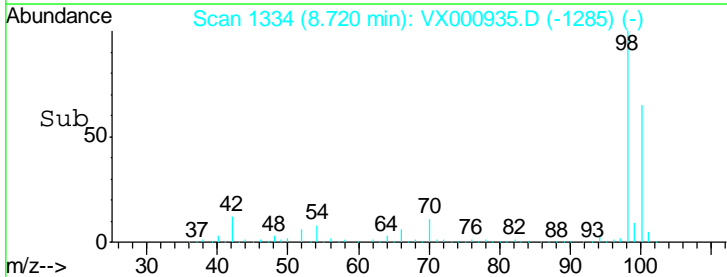
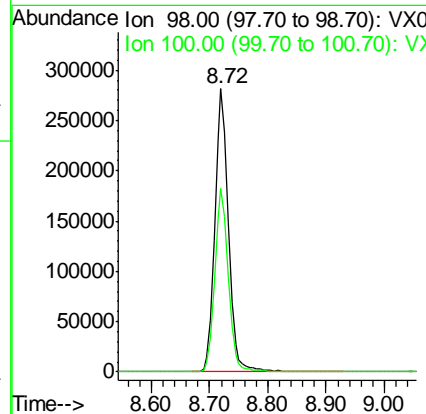
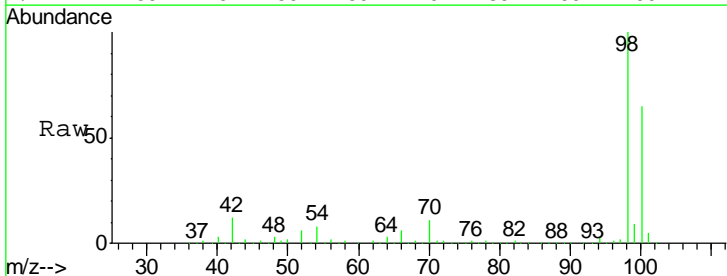
Instrument :
 MSVOA_X
ClientSampled :
 S-4-0-6-BELOW-GRADE(C)

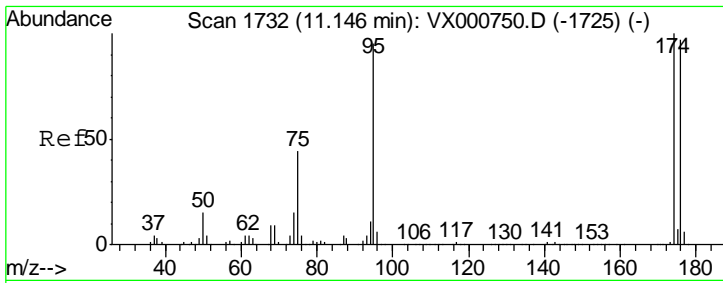
Tgt Ion	Resp	Lower	Upper
113	108118		
113	100		
111	104.3	81.5	122.3
192	26.3	20.4	30.6



#50
 Toluene-d8
 Concen: 48.56 ug/l
 RT: 8.72 min Scan# 1334
 Delta R.T. -0.00 min
 Lab File: VX000935.D
 Acq: 16 Apr 2018 22:13

Tgt Ion	Resp	Lower	Upper
98	456108		
98	100		
100	64.9	52.6	79.0

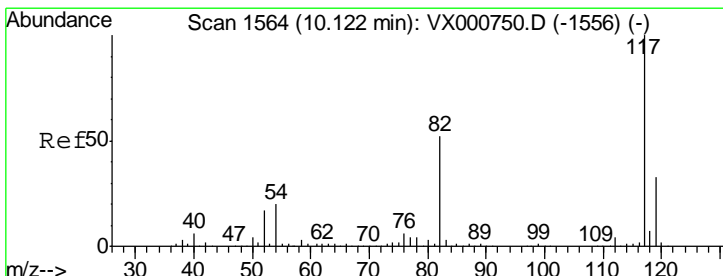
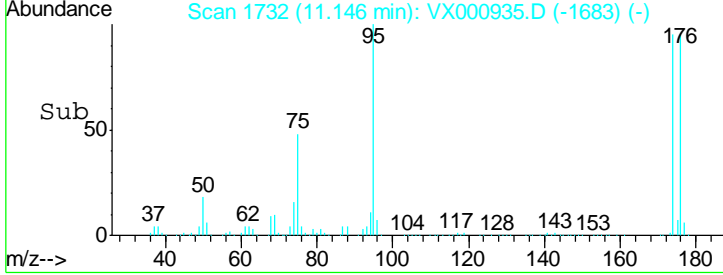
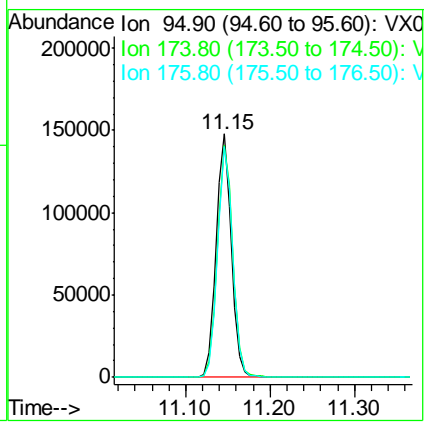
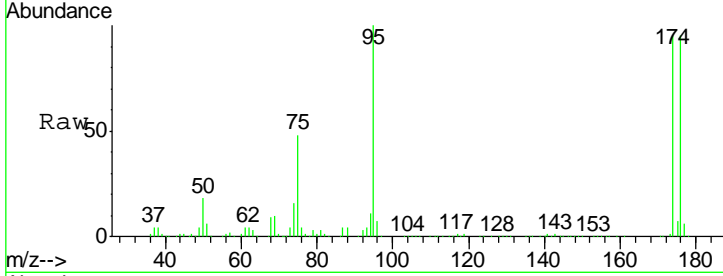




#62
 4-Bromofluorobenzene
 Concen: 47.59 ug/l
 RT: 11.15 min Scan# 1732
 Delta R.T. -0.00 min
 Lab File: VX000935.D
 Acq: 16 Apr 2018 22:13

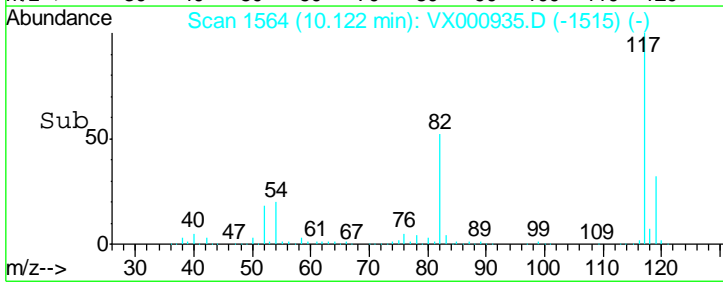
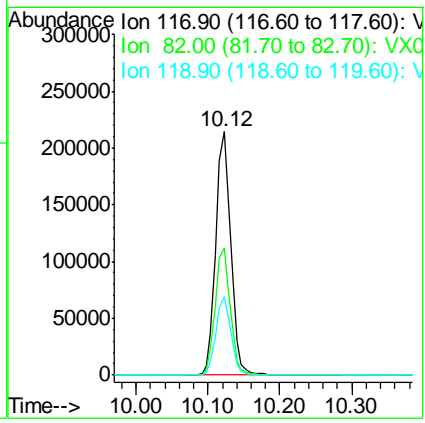
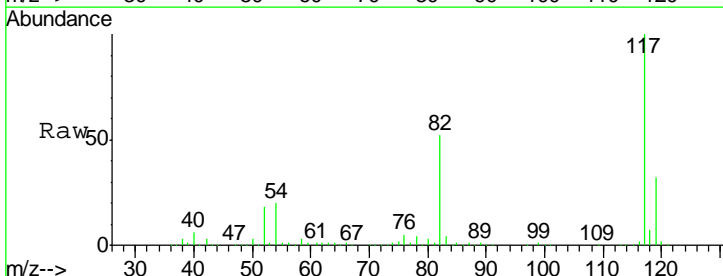
Instrument : MSVOA_X
 ClientSampled : S-4-0-6-BELOW-GRADE(C)

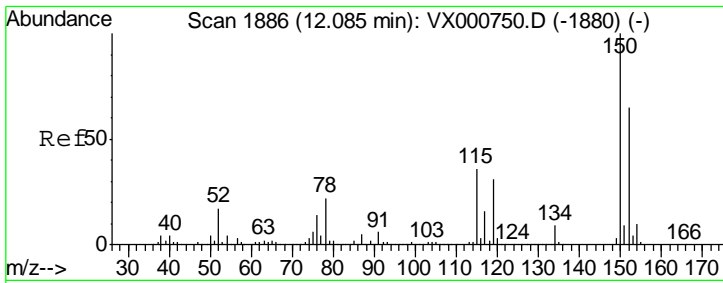
Tgt Ion	Resp	Lower	Upper
95	184918		
174	96.9	0.0	198.4
176	94.7	0.0	194.4



#63
 Chlorobenzene-d5
 Concen: 50.00 ug/l
 RT: 10.12 min Scan# 1564
 Delta R.T. -0.00 min
 Lab File: VX000935.D
 Acq: 16 Apr 2018 22:13

Tgt Ion	Resp	Lower	Upper
117	309718		
82	52.1	41.9	62.9
119	32.2	26.0	39.0





#72
 1,4-Dichlorobenzene-d4
 Concen: 50.00 ug/l
 RT: 12.09 min Scan# 1886
 Delta R.T. -0.00 min
 Lab File: VX000935.D
 Acq: 16 Apr 2018 22:13

Instrument :
 MSVOA_X
ClientSampled :
 S-4-0-6-BELOW-GRADE(C)

Tot Ion	Resp	Lower	Upper
152	100		
115	53.2	37.9	113.7
150	156.8	0.0	348.0

