

Data Path : W:\HPCHEM1\MSVOA X\DATA\VX041618\
 Data File : VX000937.D
 Acq On : 16 Apr 2018 23:04
 Operator : JC/MD
 Sample : PB108244ZHE#09 5X
 Misc : 5.0mL/MSVOA X/WATER
 ALS Vial : 26 Sample Multiplier: 1

Instrument :
 MSVOA_X
 ClientSampleId :
 PB108244ZHE#09

Quant Time: Apr 17 07:08:45 2018
 Quant Method : W:\HPCHEM1\MSVOA_X\METHOD\82X041018W.M
 Quant Title : SW846 8260
 QLast Update : Tue Apr 10 15:49:28 2018
 Response via : Initial Calibration

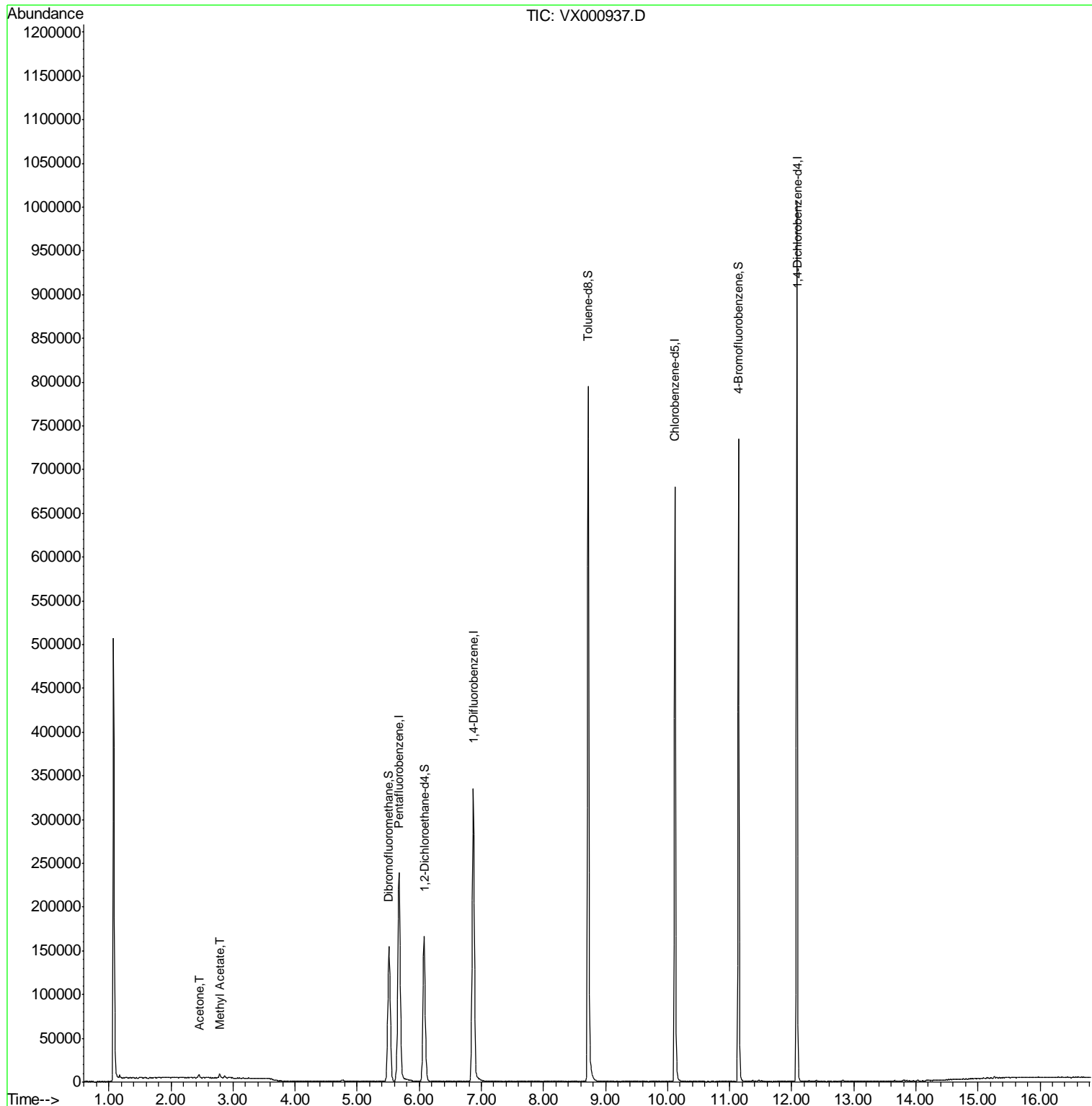
Internal Standards	R.T.	QIon	Response	Conc	Units	Dev(Min)
1) Pentafluorobenzene	5.67	168	258427	50.00	ug/l	0.00
34) 1,4-Difluorobenzene	6.87	114	360211	50.00	ug/l	0.00
63) Chlorobenzene-d5	10.12	117	331684	50.00	ug/l	0.00
72) 1,4-Dichlorobenzene-d4	12.09	152	214645	50.00	ug/l	0.00
System Monitoring Compounds						
33) 1,2-Dichloroethane-d4	6.08	65	159998	49.10	ug/l	0.00
Spiked Amount	50.000		Recovery	=	98.20%	
35) Dibromofluoromethane	5.51	113	126850	45.71	ug/l	0.00
Spiked Amount	50.000		Recovery	=	91.42%	
50) Toluene-d8	8.72	98	502485	48.63	ug/l	0.00
Spiked Amount	50.000		Recovery	=	97.26%	
62) 4-Bromofluorobenzene	11.14	95	192566	45.04	ug/l	0.00
Spiked Amount	50.000		Recovery	=	90.08%	
Target Compounds						
16) Acetone	2.45	43	3751	3.34	ug/l	100
18) Methyl Acetate	2.78	43	5104	1.76	ug/l	97

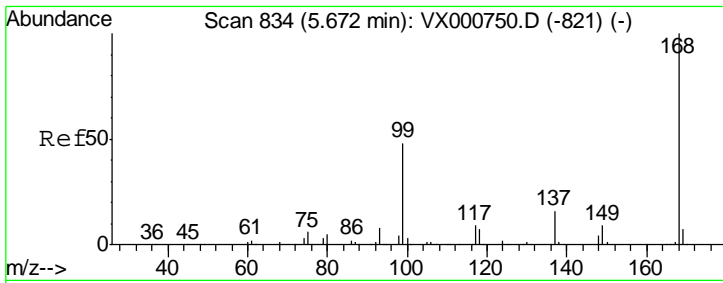
(#) = qualifier out of range (m) = manual integration (+) = signals summed

Data Path : W:\HPCHEM1\MSVOA X\DATA\VX041618\
 Data File : VX000937.D
 Acq On : 16 Apr 2018 23:04
 Operator : JC/MD
 Sample : PB108244ZHE#09 5X
 Misc : 5.0mL/MSVOA X/WATER
 ALS Vial : 26 Sample Multiplier: 1

Instrument :
 MSVOA_X
 ClientSampleId :
 PB108244ZHE#09

Quant Time: Apr 17 07:08:45 2018
 Quant Method : W:\HPCHEM1\MSVOA_X\METHOD\82X041018W.M
 Quant Title : SW846 8260
 QLast Update : Tue Apr 10 15:49:28 2018
 Response via : Initial Calibration



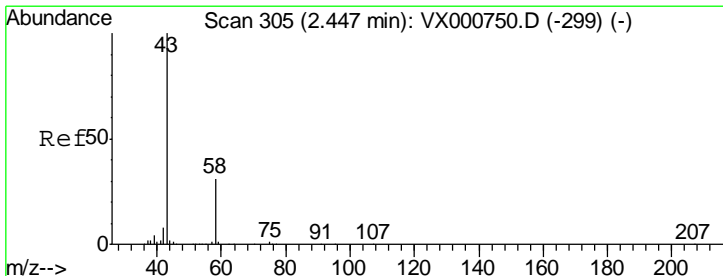
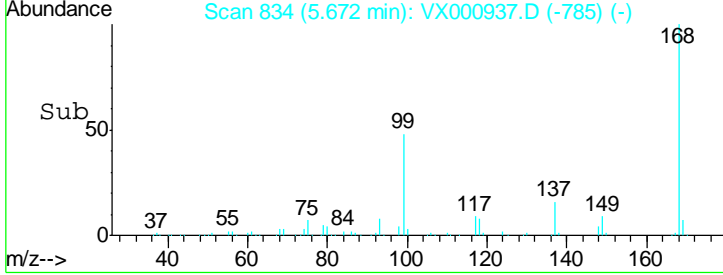
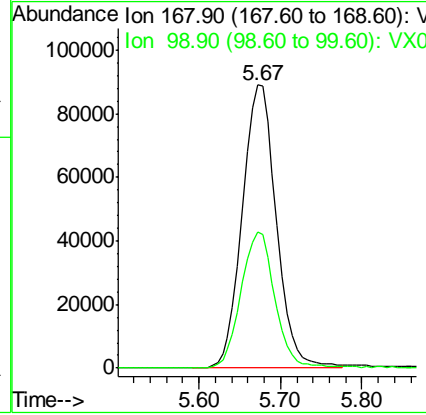
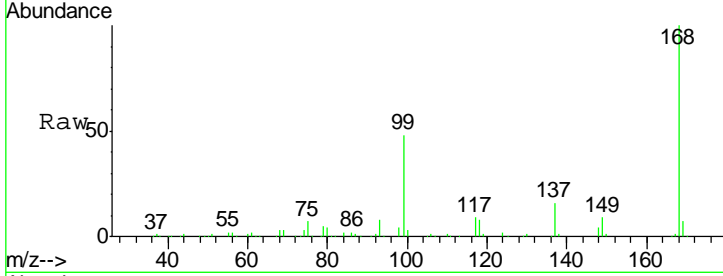


#1
 Pentafluorobenzene
 Concen: 50.00 ug/l
 RT: 5.67 min Scan# 834
 Delta R.T. 0.00 min
 Lab File: VX000937.D
 Acq: 16 Apr 2018 23:04

Instrument : MSVOA_X
 ClientSampled : PB108244ZHE#09

Tot Ion: 168 Resp: 258427

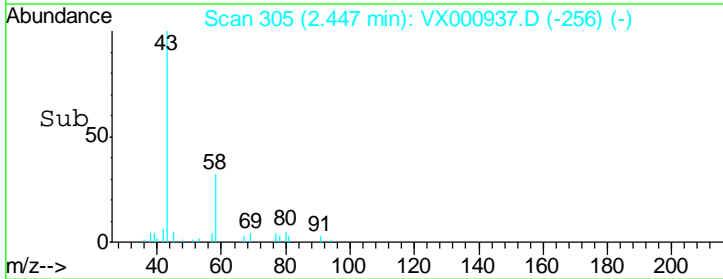
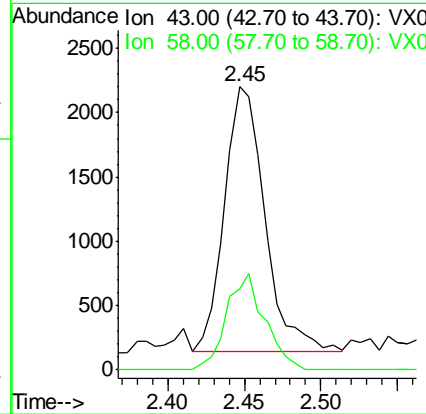
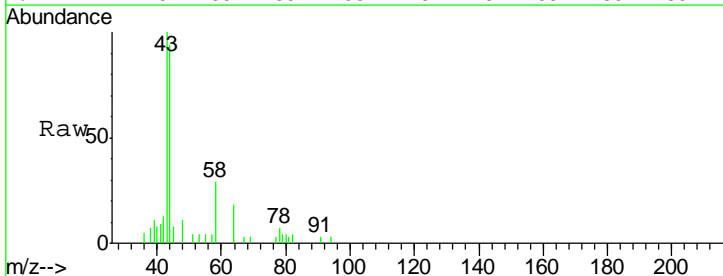
Ion	Ratio	Lower	Upper
168	100		
99	48.3	38.3	57.5

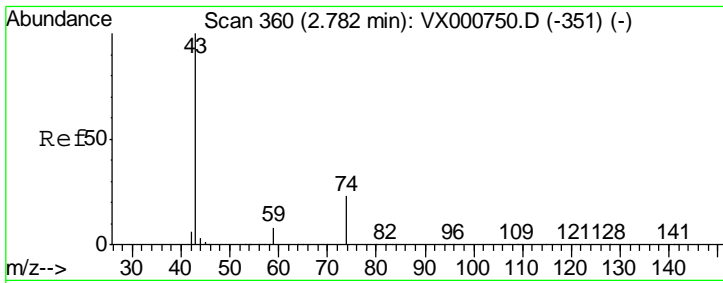


#16
 Acetone
 Concen: 3.34 ug/l
 RT: 2.45 min Scan# 305
 Delta R.T. 0.00 min
 Lab File: VX000937.D
 Acq: 16 Apr 2018 23:04

Tgt Ion: 43 Resp: 3751

Ion	Ratio	Lower	Upper
43	100		
58	30.6	24.6	37.0

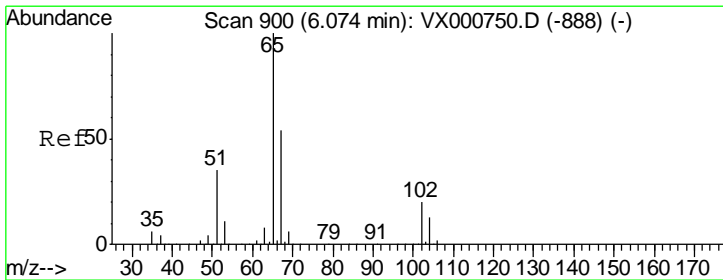
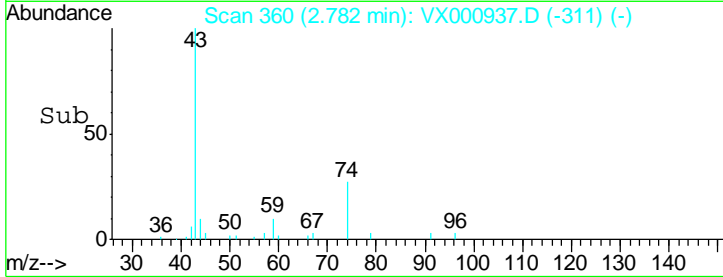
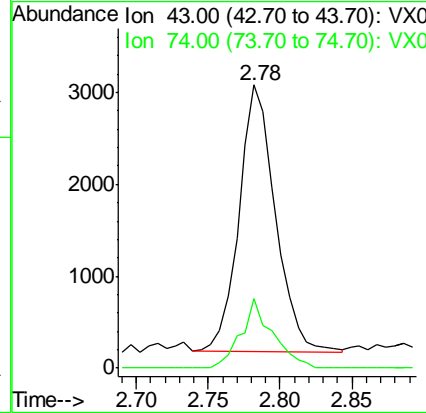
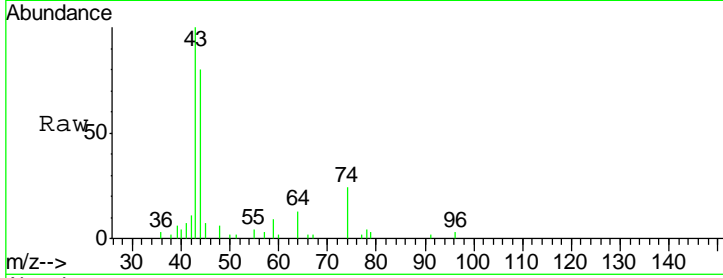




#18
 Methyl Acetate
 Concen: 1.76 ug/l
 RT: 2.78 min Scan# 360
 Delta R.T. -0.00 min
 Lab File: VX000937.D
 Acq: 16 Apr 2018 23:04

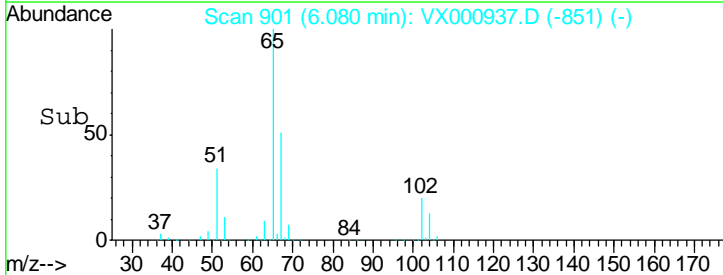
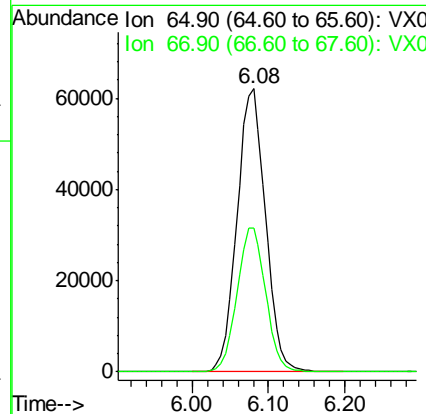
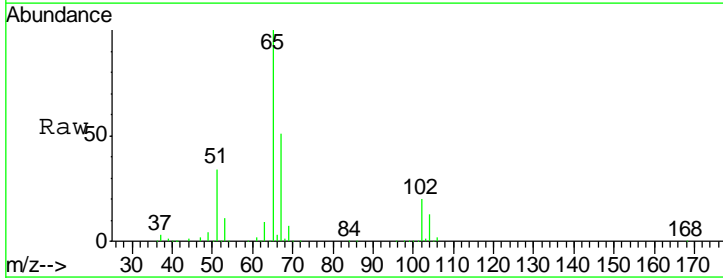
Instrument : MSVOA_X
 ClientSampled : PB108244ZHE#09

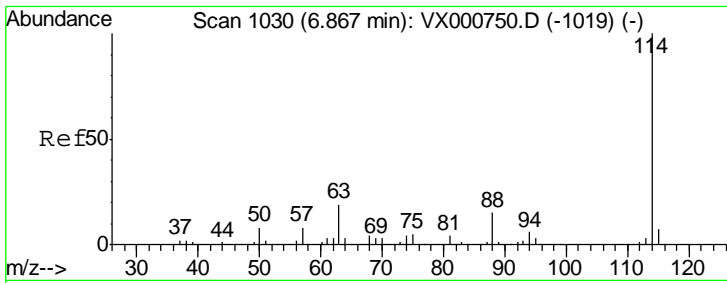
Tgt Ion	Resp	Lower	Upper
43	5104		
74	22.5	19.1	28.7



#33
 1,2-Dichloroethane-d4
 Concen: 49.10 ug/l
 RT: 6.08 min Scan# 901
 Delta R.T. 0.01 min
 Lab File: VX000937.D
 Acq: 16 Apr 2018 23:04

Tgt Ion	Resp	Lower	Upper
65	159998		
67	51.2	0.0	103.8

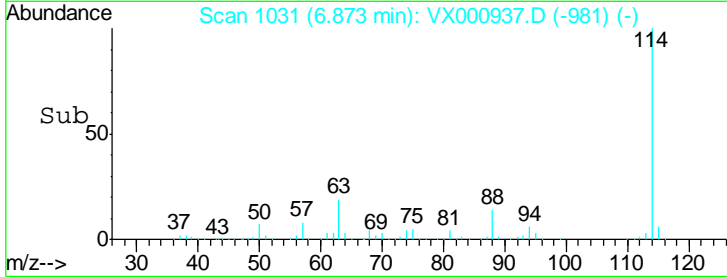
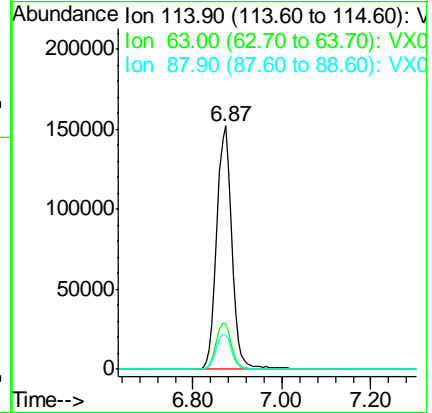
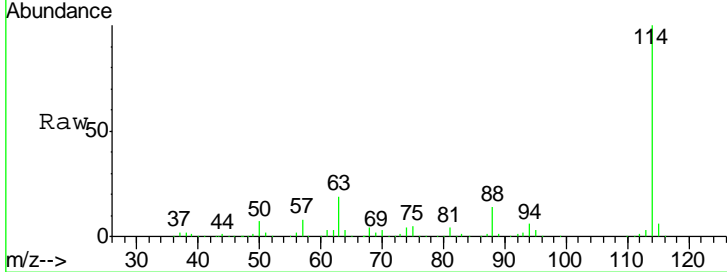




#34
 1,4-Difluorobenzene
 Concen: 50.00 ug/l
 RT: 6.87 min Scan# 1031
 Delta R.T. 0.01 min
 Lab File: VX000937.D
 Acq: 16 Apr 2018 23:04

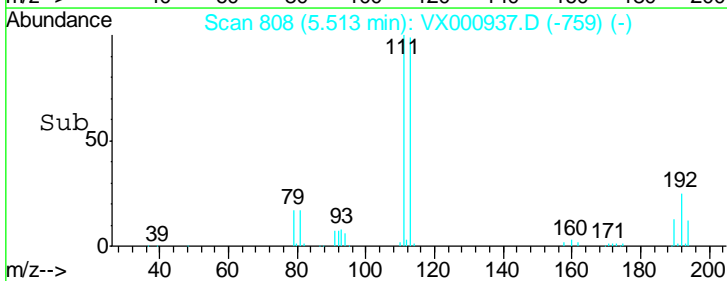
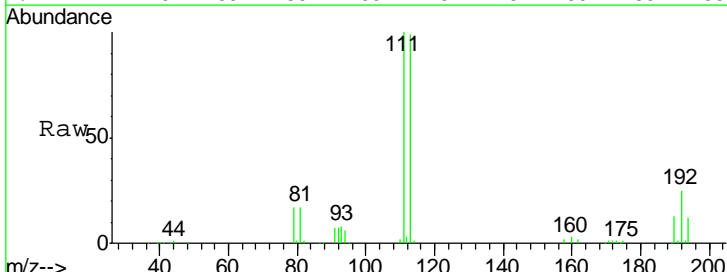
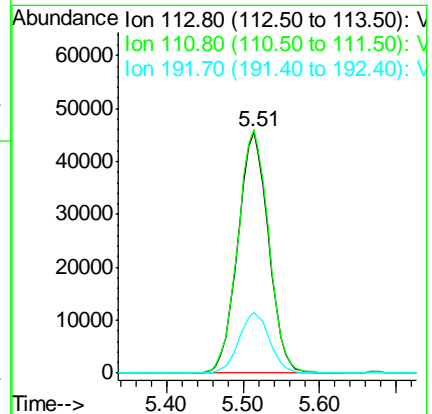
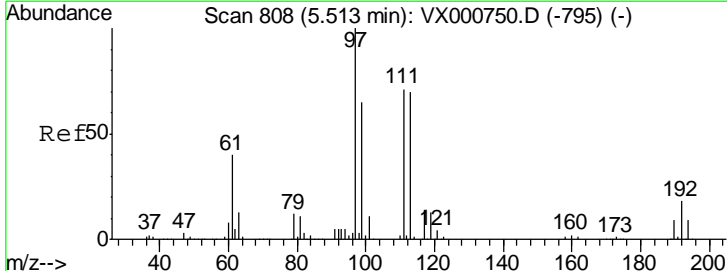
Instrument : MSVOA_X
 ClientSampleId : PB108244ZHE#09

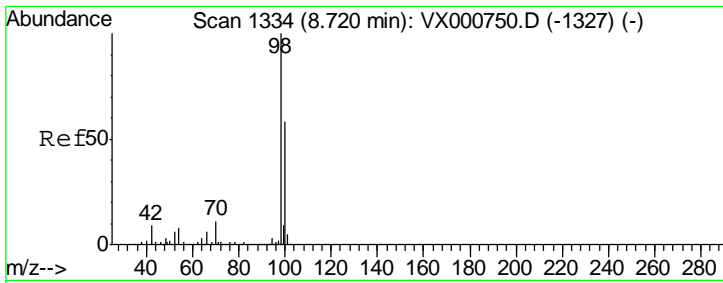
Tgt Ion	Resp	Lower	Upper
114	360211		
63	18.5	0.0	38.4
88	14.0	0.0	31.0



#35
 Dibromofluoromethane
 Concen: 45.71 ug/l
 RT: 5.51 min Scan# 808
 Delta R.T. -0.00 min
 Lab File: VX000937.D
 Acq: 16 Apr 2018 23:04

Tgt Ion	Resp	Lower	Upper
113	126850		
111	101.7	81.5	122.3
192	25.0	20.4	30.6

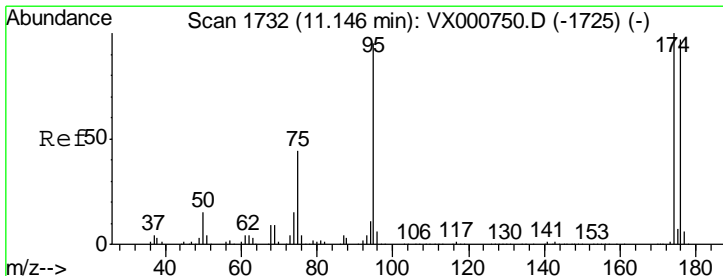
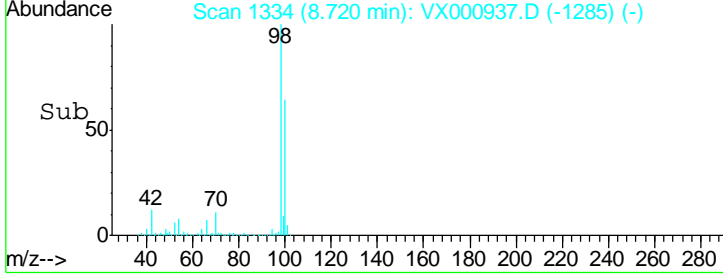
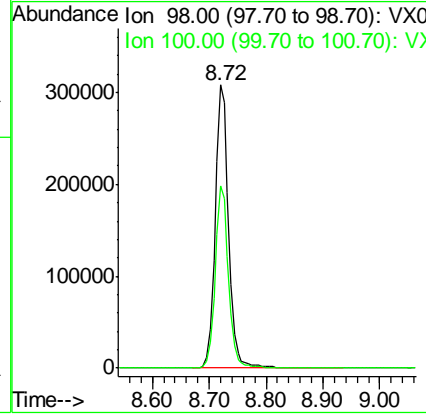
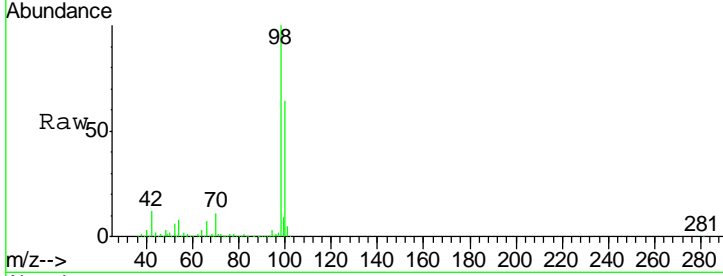




#50
 Toluene-d8
 Concen: 48.63 ug/l
 RT: 8.72 min Scan# 1334
 Delta R.T. 0.00 min
 Lab File: VX000937.D
 Acq: 16 Apr 2018 23:04

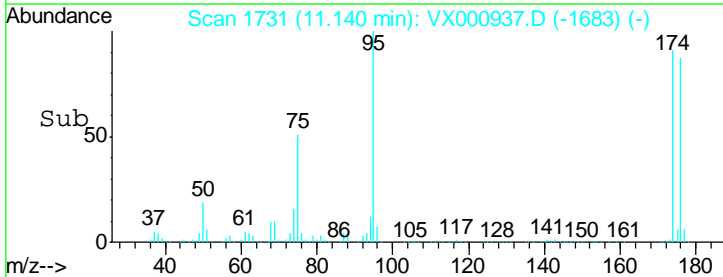
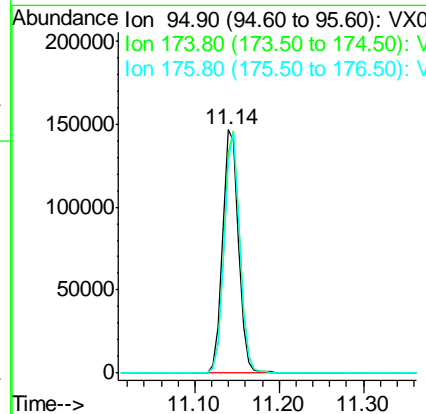
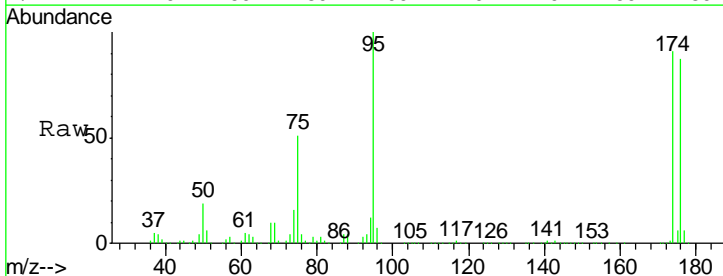
Instrument : MSVOA_X
 ClientSampled : PB108244ZHE#09

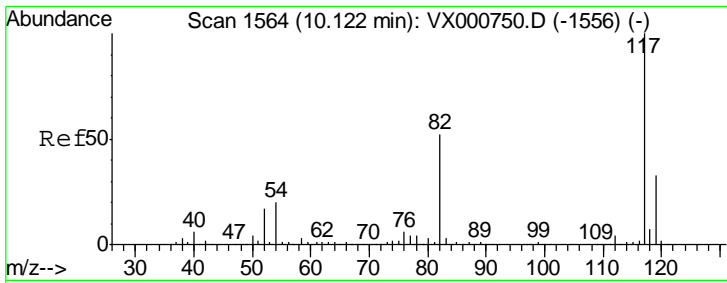
Tgt Ion: 98 Resp: 502485
 Ion Ratio Lower Upper
 98 100
 100 64.3 52.6 79.0



#62
 4-Bromofluorobenzene
 Concen: 45.04 ug/l
 RT: 11.14 min Scan# 1731
 Delta R.T. -0.01 min
 Lab File: VX000937.D
 Acq: 16 Apr 2018 23:04

Tgt Ion: 95 Resp: 192566
 Ion Ratio Lower Upper
 95 100
 174 98.0 0.0 198.4
 176 96.0 0.0 194.4

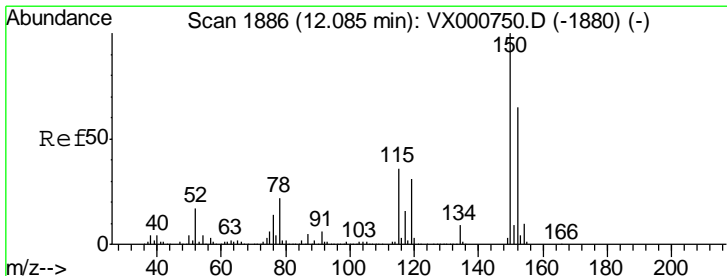
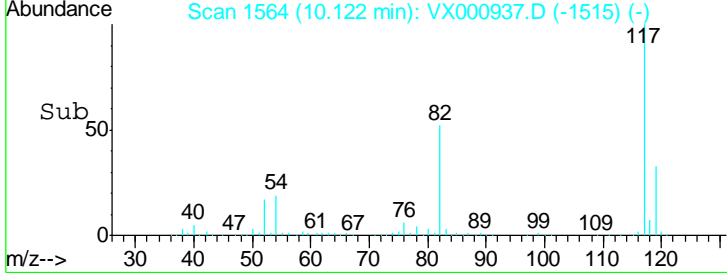
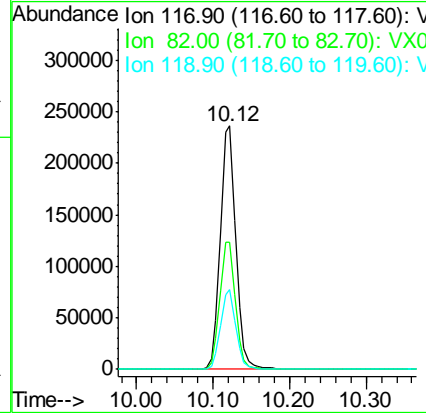
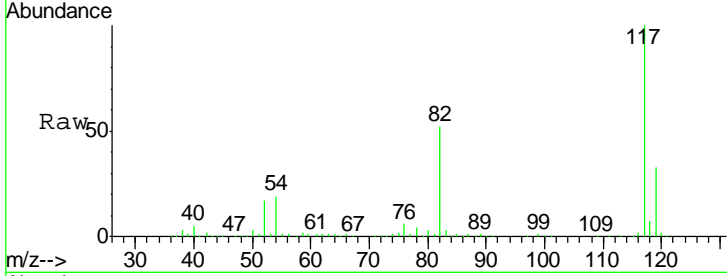




#63
 Chlorobenzene-d5
 Concen: 50.00 ug/l
 RT: 10.12 min Scan# 1564
 Delta R.T. 0.00 min
 Lab File: VX000937.D
 Acq: 16 Apr 2018 23:04

Instrument : MSVOA_X
 ClientSampled : PB108244ZHE#09

Tgt Ion	Resp	Lower	Upper
117	331684		
82	52.2	41.9	62.9
119	32.7	26.0	39.0



#72
 1,4-Dichlorobenzene-d4
 Concen: 50.00 ug/l
 RT: 12.09 min Scan# 1886
 Delta R.T. 0.00 min
 Lab File: VX000937.D
 Acq: 16 Apr 2018 23:04

Tgt Ion	Resp	Lower	Upper
152	214645		
115	53.4	37.9	113.7
150	155.8	0.0	348.0

