

Data Path : W:\HPCHEM1\MSVOA X\DATA\VX042018\
 Data File : VX001024.D
 Acq On : 20 Apr 2018 22:39
 Operator : JC/MD
 Sample : VX0420WBL02
 Misc : 5.0mL/MSVOA X/WATER
 ALS Vial : 28 Sample Multiplier: 1

Instrument :
 MSVOA_X
 ClientSampleId :

Quant Time: Apr 21 05:39:27 2018
 Quant Method : W:\HPCHEM1\MSVOA_X\METHOD\82X041918W.M
 Quant Title : SW846 8260
 QLast Update : Fri Apr 20 05:03:28 2018
 Response via : Initial Calibration

Internal Standards	R.T.	QIon	Response	Conc	Units	Dev(Min)
1) Pentafluorobenzene	5.67	168	235036	50.00	ug/l	0.00
34) 1,4-Difluorobenzene	6.87	114	327913	50.00	ug/l	0.00
63) Chlorobenzene-d5	10.12	117	308894	50.00	ug/l	0.00
72) 1,4-Dichlorobenzene-d4	12.09	152	209022	50.00	ug/l	0.00

System Monitoring Compounds

33) 1,2-Dichloroethane-d4	6.08	65	151329	50.79	ug/l	0.00
Spiked Amount	50.000		Recovery	=	101.58%	
35) Dibromofluoromethane	5.51	113	115701	46.27	ug/l	0.00
Spiked Amount	50.000		Recovery	=	92.54%	
50) Toluene-d8	8.72	98	462541	50.03	ug/l	0.00
Spiked Amount	50.000		Recovery	=	100.06%	
62) 4-Bromofluorobenzene	11.14	95	182272	46.97	ug/l	0.00
Spiked Amount	50.000		Recovery	=	93.94%	

Target Compounds

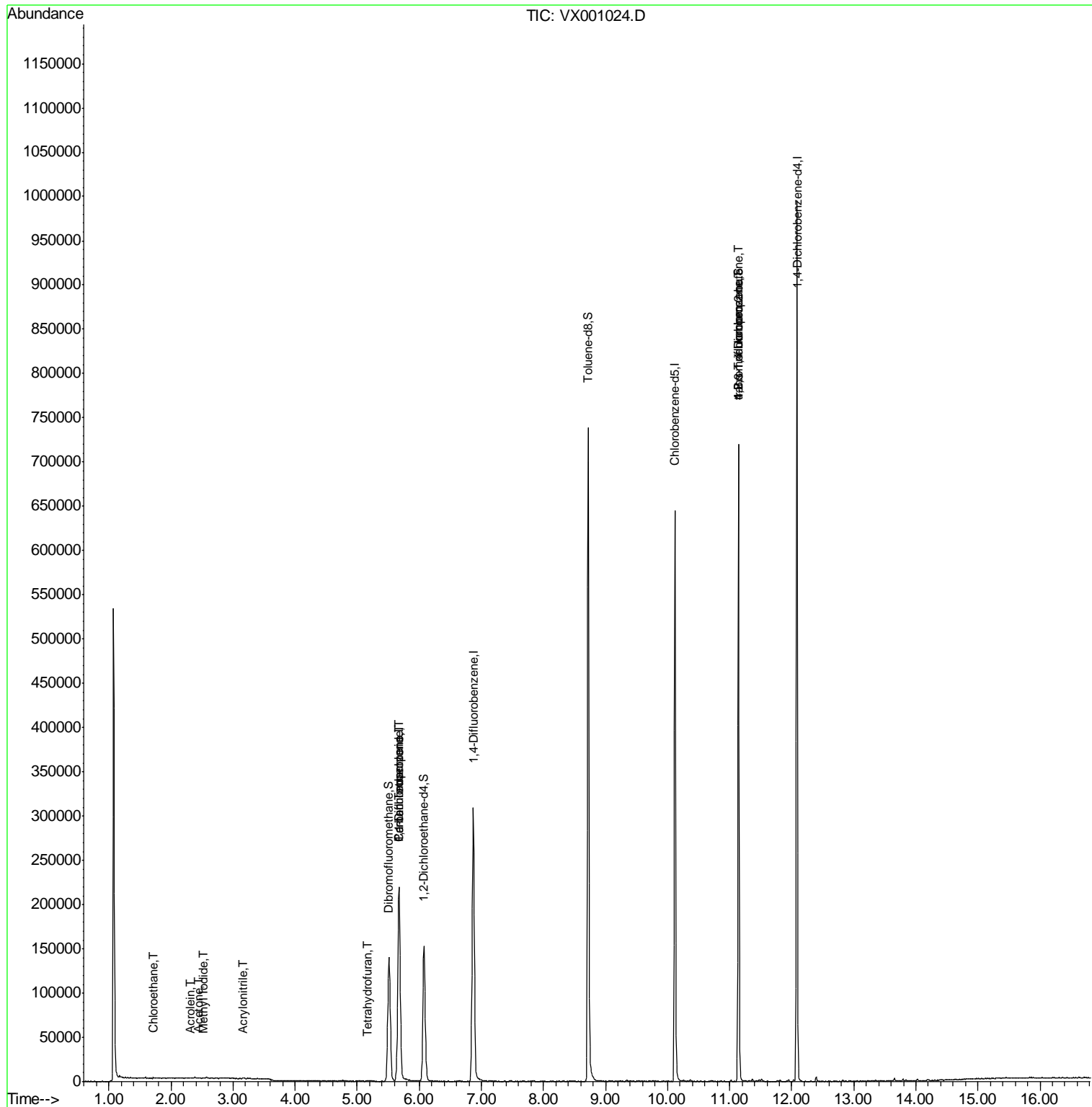
						Qvalue
5) Bromomethane	1.65	94	342	Below Cal	#	69
6) Chloroethane	1.72	64	458	0.27	ug/l #	43
10) Methyl Iodide	2.51	142	271	7.69	ug/l #	41
13) Acrolein	2.31	56	67	11.39	ug/l #	66
15) Acrylonitrile	3.15	53	343	0.28	ug/l #	55
16) Acetone	2.45	43	596	0.53	ug/l #	80
20) Methylene Chloride	2.87	84	367	Below Cal	#	83
29) Tetrahydrofuran	5.17	42	278	0.25	ug/l #	40
36) 1,1-Dichloropropene	5.68	75	14669	3.81	ug/l #	48
38) Carbon Tetrachloride	5.67	117	20640	5.29	ug/l #	16
76) 1,2,3-Trichloropropane	11.14	75	91368	25.19	ug/l #	38
81) trans-1,4-Dichloro-2-buten	11.14	75	91368	75.54	ug/l #	8

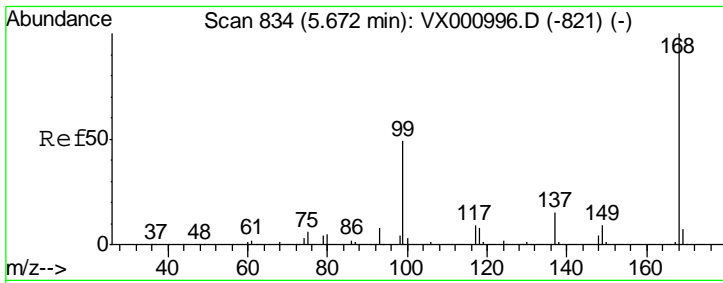
(#) = qualifier out of range (m) = manual integration (+) = signals summed

Data Path : W:\HPCHEM1\MSVOA X\DATA\VX042018\
Data File : VX001024.D
Acq On : 20 Apr 2018 22:39
Operator : JC/MD
Sample : VX0420WBL02
Misc : 5.0mL/MSVOA X/WATER
ALS Vial : 28 Sample Multiplier: 1

Instrument :
MSVOA_X
ClientSampled :

Quant Time: Apr 21 05:39:27 2018
Quant Method : W:\HPCHEM1\MSVOA_X\METHOD\82X041918W.M
Quant Title : SW846 8260
QLast Update : Fri Apr 20 05:03:28 2018
Response via : Initial Calibration

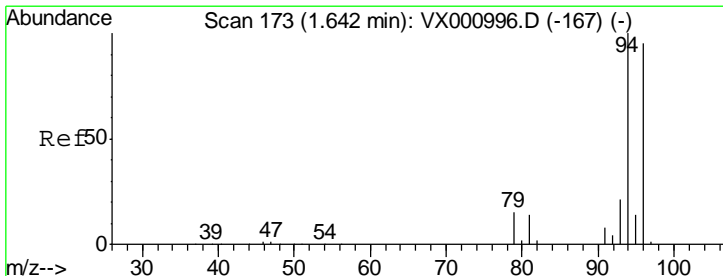
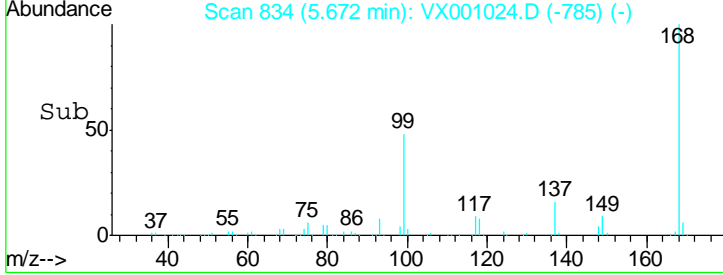
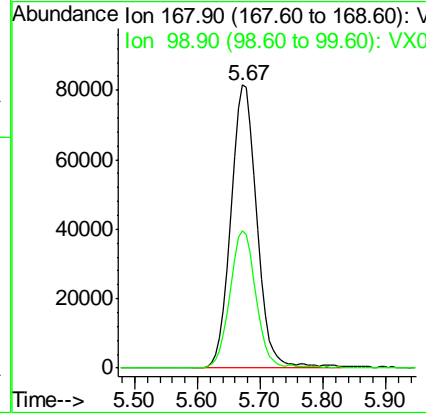
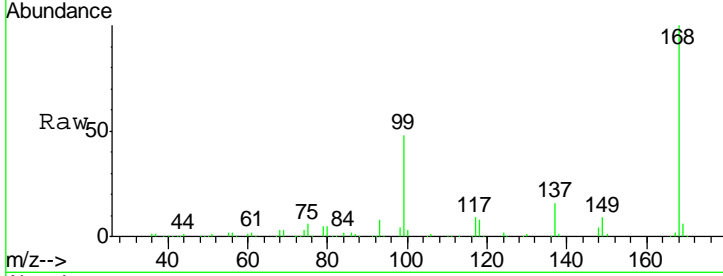




#1
 Pentafluorobenzene
 Concen: 50.00 ug/l
 RT: 5.67 min Scan# 834
 Delta R.T. 0.00 min
 Lab File: VX001024.D
 Acq: 20 Apr 2018 22:39

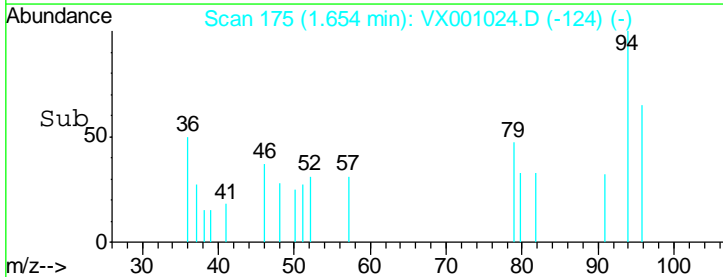
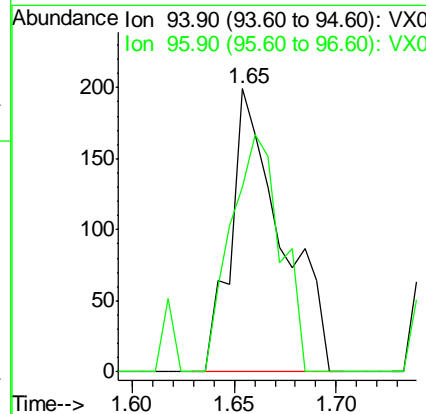
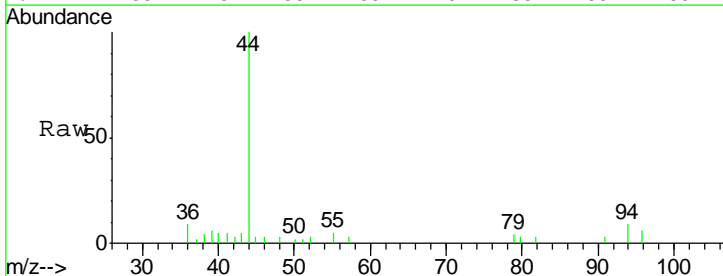
Instrument :
 MSVOA_X
 ClientSampled :

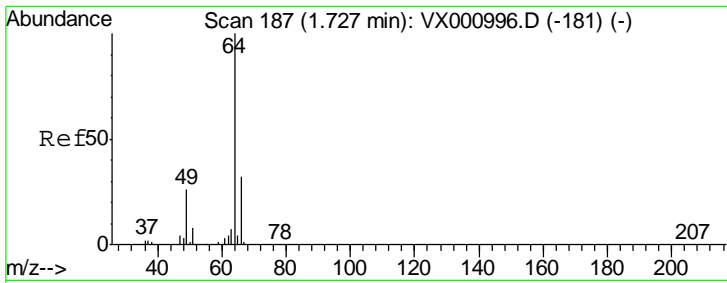
Tot Ion: 168 Resp: 235036
 Ion Ratio Lower Upper
 168 100
 99 48.5 39.2 58.8



#5
 Bromomethane
 Concen: Below Cal
 RT: 1.65 min Scan# 175
 Delta R.T. 0.01 min
 Lab File: VX001024.D
 Acq: 20 Apr 2018 22:39

Tgt Ion: 94 Resp: 342
 Ion Ratio Lower Upper
 94 100
 96 65.3 76.0 114.0#

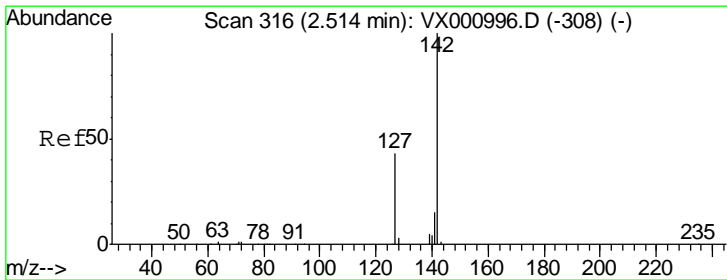
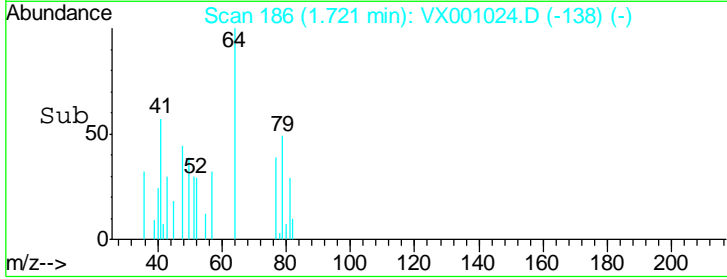
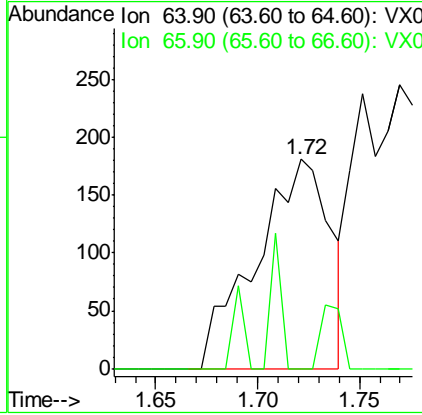
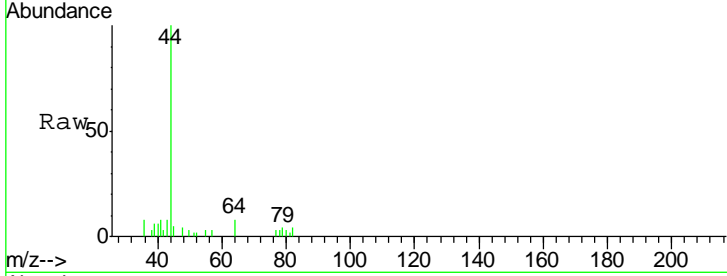




#6
 Chloroethane
 Concen: 0.27 ug/l
 RT: 1.72 min Scan# 186
 Delta R.T. -0.01 min
 Lab File: VX001024.D
 Acq: 20 Apr 2018 22:39

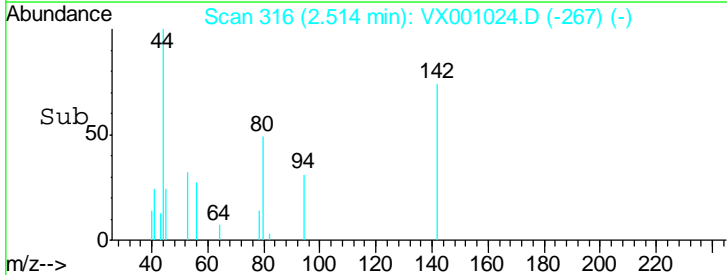
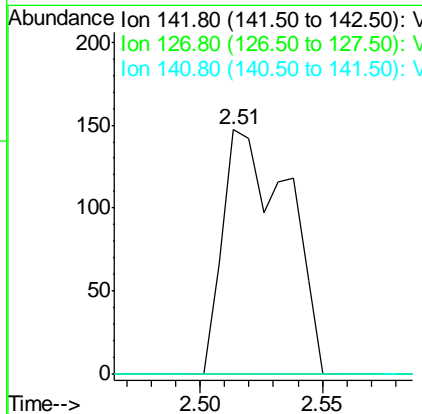
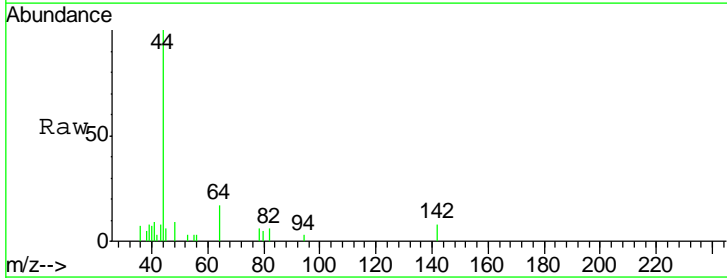
Instrument :
 MSVOA_X
 ClientSampled :

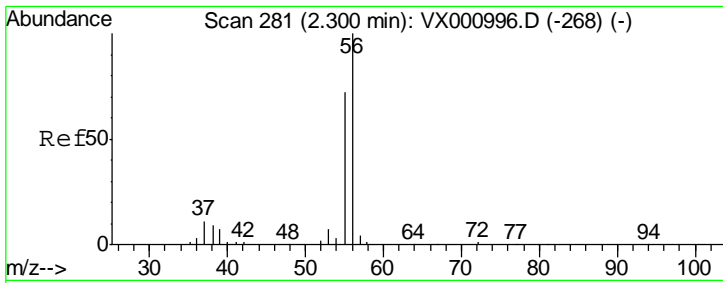
Tgt Ion	Ratio	Lower	Upper
64	100		
66	0.0	25.3	37.9#



#10
 Methyl Iodide
 Concen: 7.69 ug/l
 RT: 2.51 min Scan# 316
 Delta R.T. 0.00 min
 Lab File: VX001024.D
 Acq: 20 Apr 2018 22:39

Tgt Ion	Ratio	Lower	Upper
142	100		
127	0.0	34.0	51.0#
141	0.0	11.4	17.2#

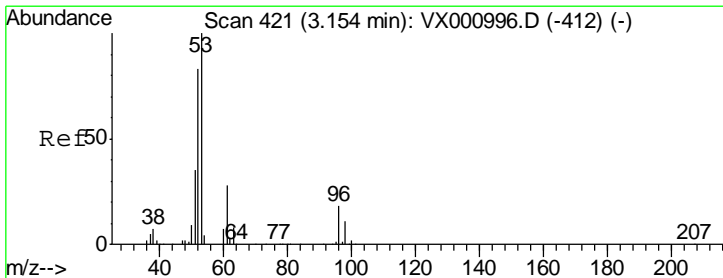
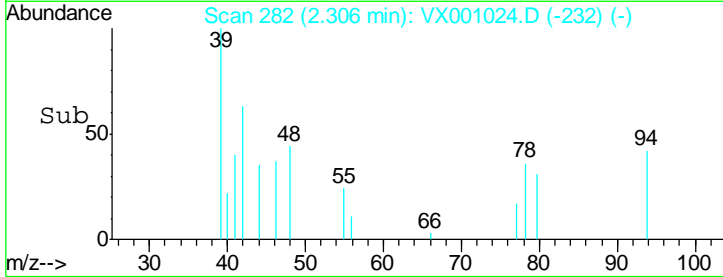
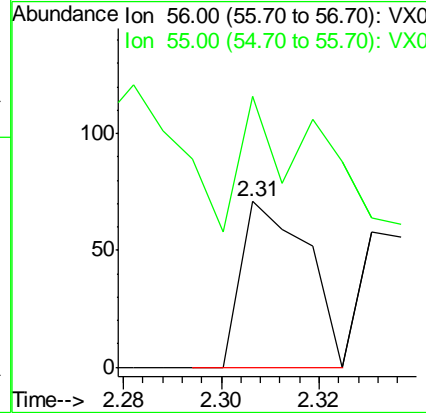
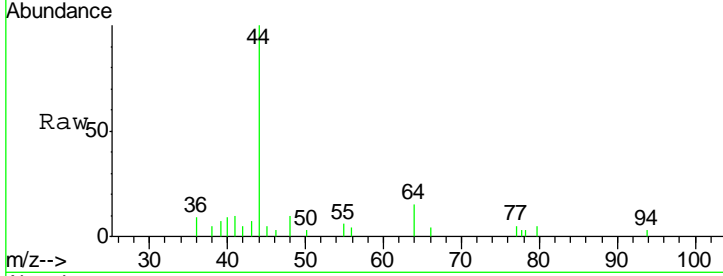




#13
 Acrolein
 Concen: 11.39 ug/l
 RT: 2.31 min Scan# 282
 Delta R.T. 0.01 min
 Lab File: VX001024.D
 Acq: 20 Apr 2018 22:39

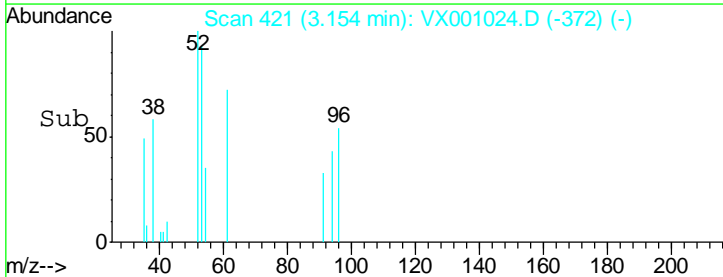
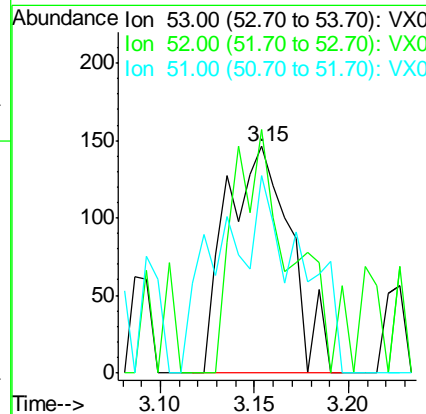
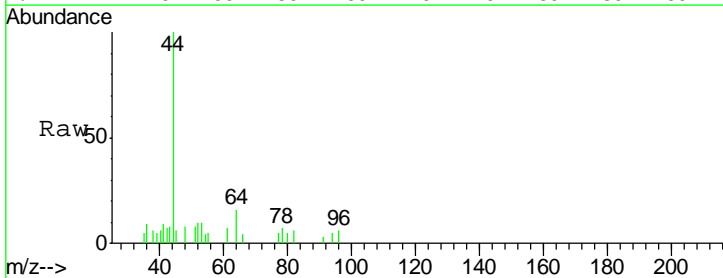
Instrument : MSVOA_X
 ClientSampled :

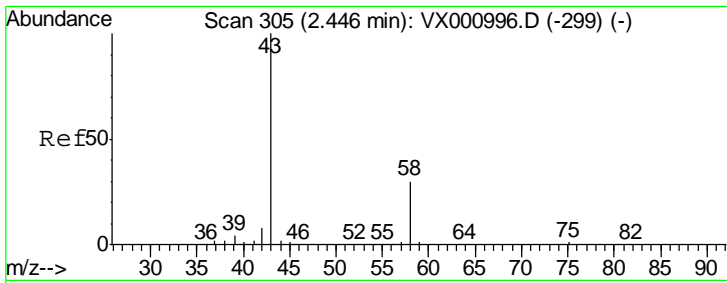
Tgt Ion: 56 Resp: 67
 Ion Ratio Lower Upper
 56 100
 55 100.0 57.4 86.2#



#15
 Acrylonitrile
 Concen: 0.28 ug/l
 RT: 3.15 min Scan# 421
 Delta R.T. 0.00 min
 Lab File: VX001024.D
 Acq: 20 Apr 2018 22:39

Tgt Ion: 53 Resp: 343
 Ion Ratio Lower Upper
 53 100
 52 93.3 66.4 99.6
 51 109.0 29.0 43.6#

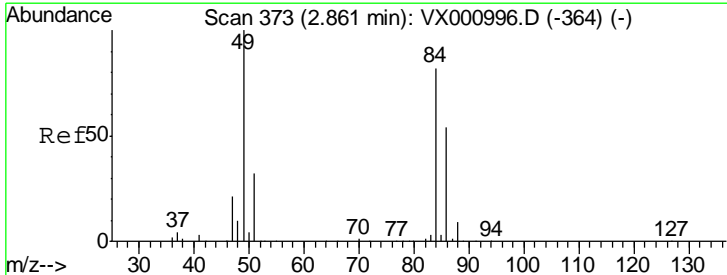
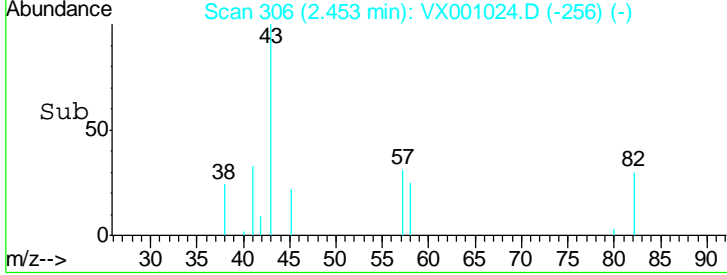
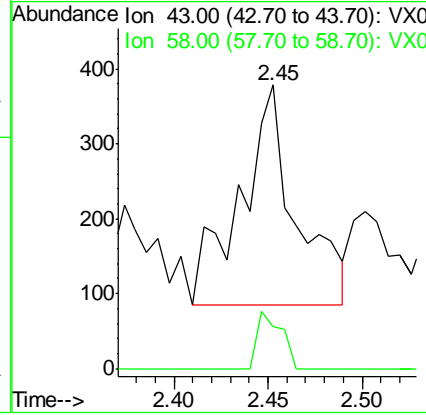
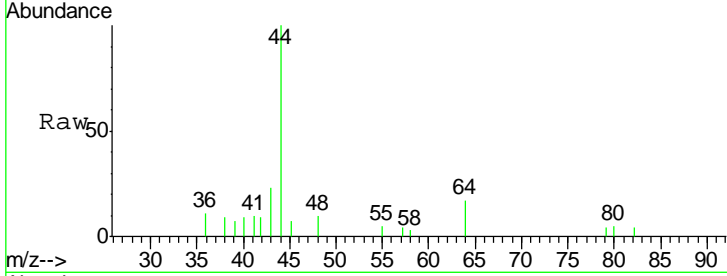




#16
 Acetone
 Concen: 0.53 ug/l
 RT: 2.45 min Scan# 306
 Delta R.T. 0.01 min
 Lab File: VX001024.D
 Acq: 20 Apr 2018 22:39

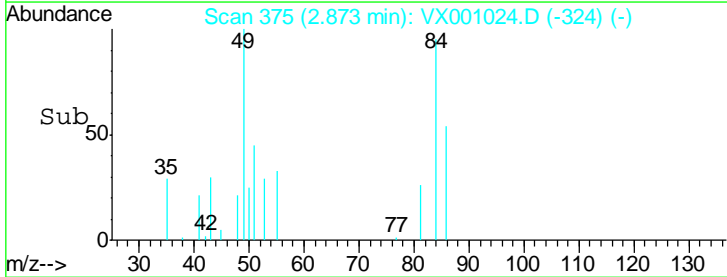
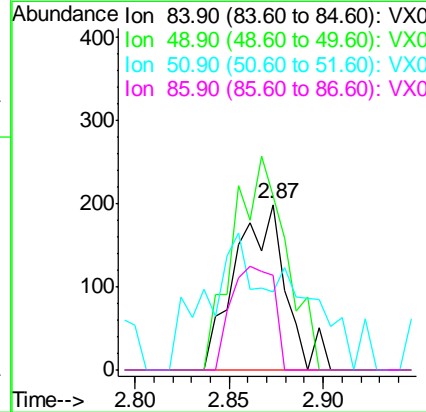
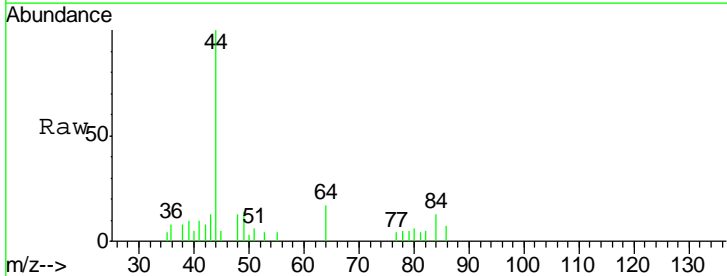
Instrument : MSVOA_X
 ClientSampled :

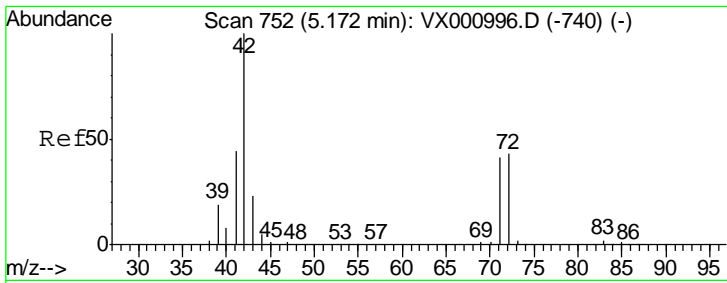
Tgt Ion	Resp	Lower	Upper
43	100		
58	18.8	23.7	35.5#



#20
 Methylene Chloride
 Concen: Below Cal
 RT: 2.87 min Scan# 375
 Delta R.T. 0.01 min
 Lab File: VX001024.D
 Acq: 20 Apr 2018 22:39

Tgt Ion	Resp	Lower	Upper
84	100		
49	105.1	97.1	145.7
51	16.2	30.8	46.2#
86	57.1	52.3	78.5

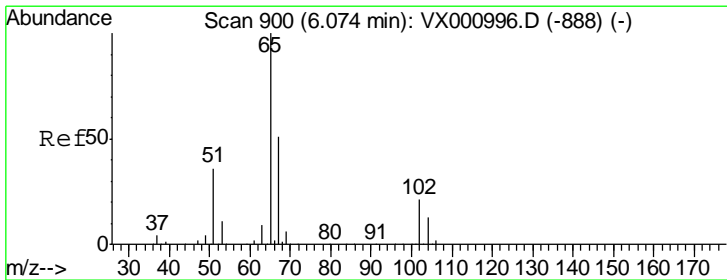
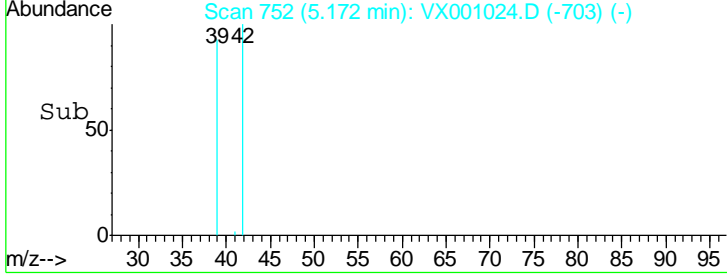
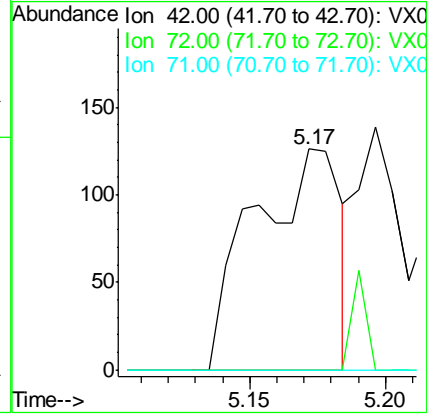
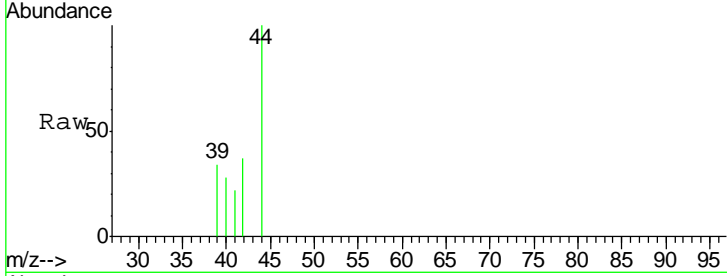




#29
 Tetrahydrofuran
 Concen: 0.25 ug/l
 RT: 5.17 min Scan# 752
 Delta R.T. 0.00 min
 Lab File: VX001024.D
 Acq: 20 Apr 2018 22:39

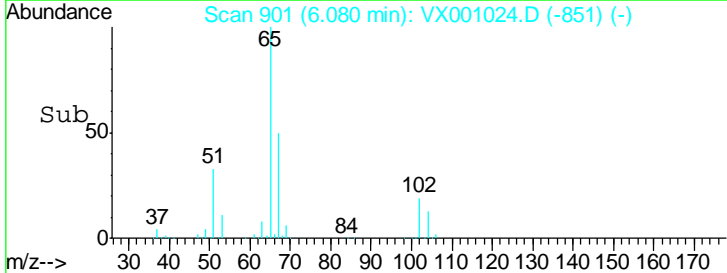
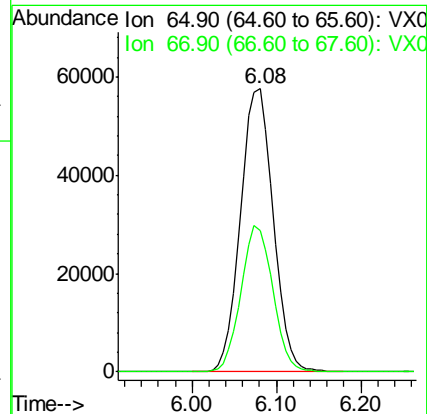
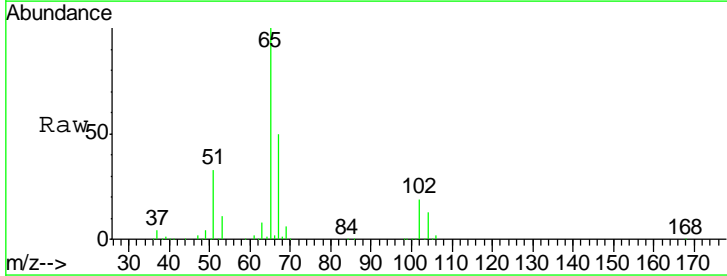
Instrument :
 MSVOA_X
 ClientSampled :

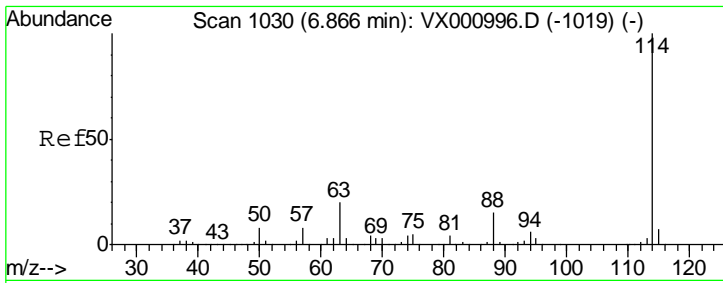
Tgt Ion	Ratio	Lower	Upper
42	100		
72	7.6	34.6	52.0#
71	0.0	32.6	49.0#



#33
 1,2-Dichloroethane-d4
 Concen: 50.79 ug/l
 RT: 6.08 min Scan# 901
 Delta R.T. 0.01 min
 Lab File: VX001024.D
 Acq: 20 Apr 2018 22:39

Tgt Ion	Ratio	Lower	Upper
65	100		
67	50.6	0.0	102.6

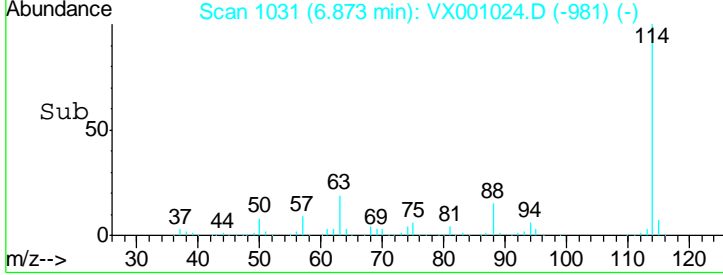
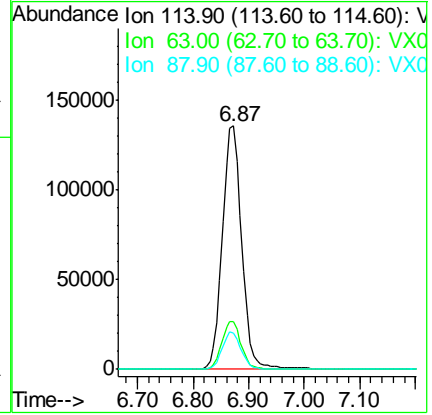
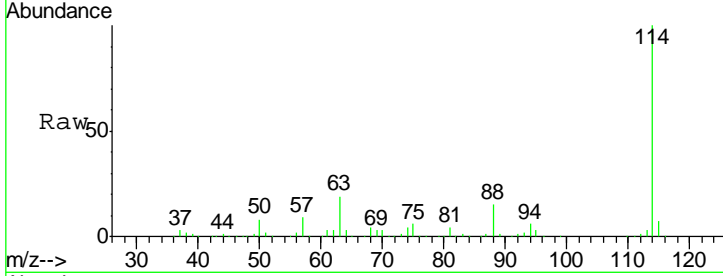




#34
 1,4-Difluorobenzene
 Concen: 50.00 ug/l
 RT: 6.87 min Scan# 1031
 Delta R.T. 0.01 min
 Lab File: VX001024.D
 Acq: 20 Apr 2018 22:39

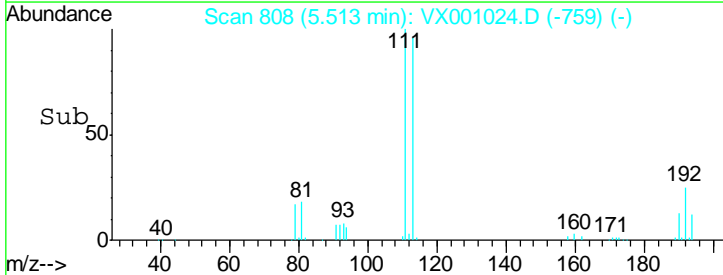
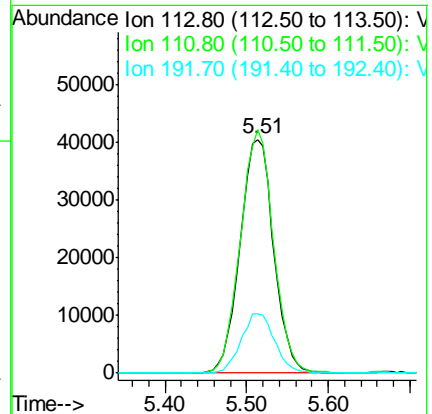
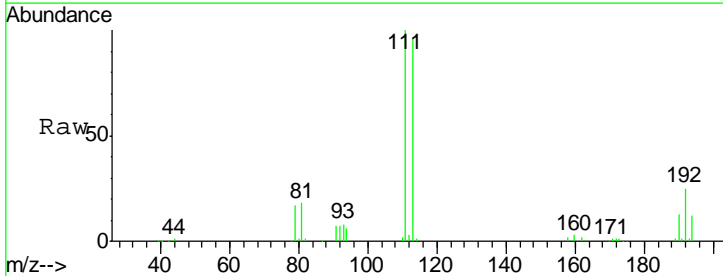
Instrument : MSVOA_X
 ClientSampled :

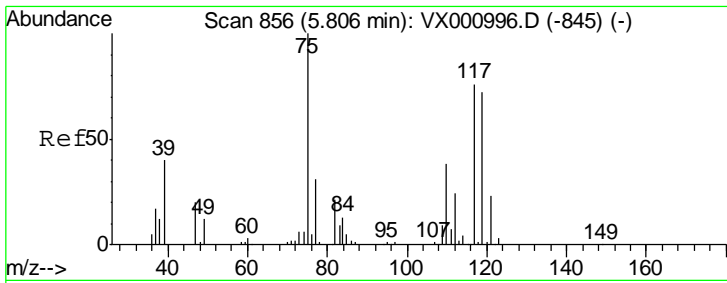
Tgt Ion	Resp	Lower	Upper
114	327913		
63	19.4	0.0	39.4
88	15.1	0.0	29.8



#35
 Dibromofluoromethane
 Concen: 46.27 ug/l
 RT: 5.51 min Scan# 808
 Delta R.T. 0.00 min
 Lab File: VX001024.D
 Acq: 20 Apr 2018 22:39

Tgt Ion	Resp	Lower	Upper
113	115701		
111	102.3	81.4	122.2
192	25.2	20.4	30.6

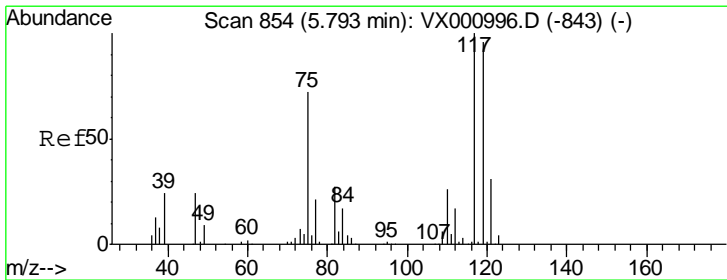
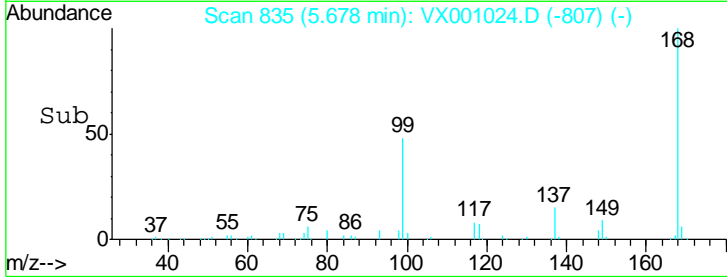
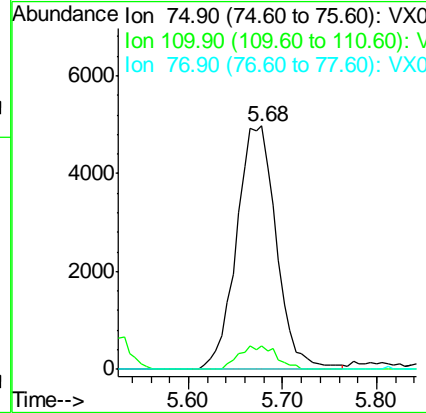
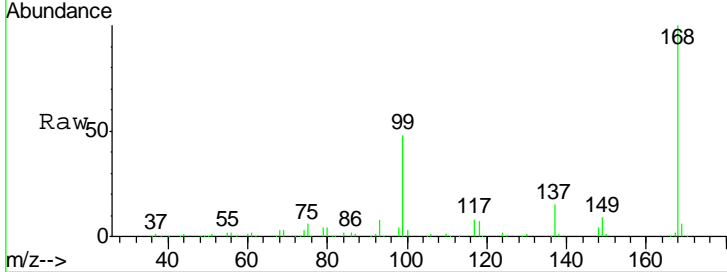




#36
 1,1-Dichloropropene
 Concen: 3.81 ug/l
 RT: 5.68 min Scan# 835
 Delta R.T. -0.13 min
 Lab File: VX001024.D
 Acq: 20 Apr 2018 22:39

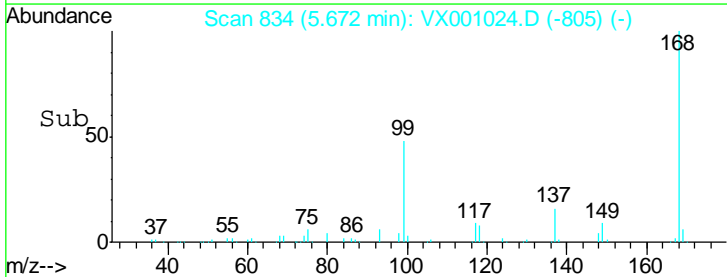
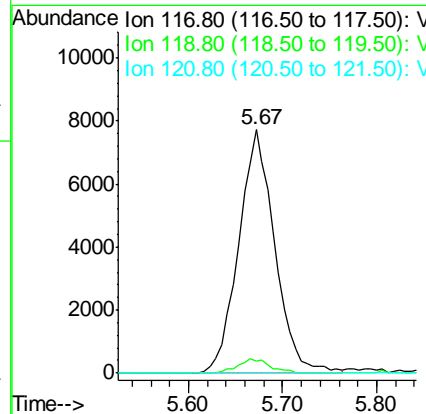
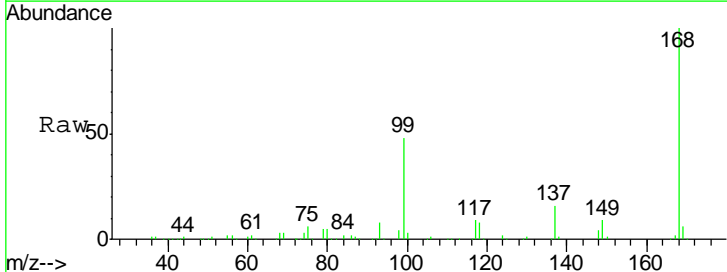
Instrument :
 MSVOA_X
 ClientSampled :

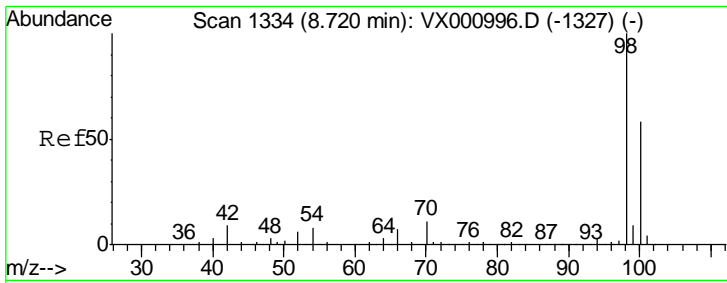
Tgt Ion	Resp	Lower	Upper
75	14669		
110	9.1	18.7	56.1#
77	0.0	25.0	37.4#



#38
 Carbon Tetrachloride
 Concen: 5.29 ug/l
 RT: 5.67 min Scan# 834
 Delta R.T. -0.12 min
 Lab File: VX001024.D
 Acq: 20 Apr 2018 22:39

Tgt Ion	Resp	Lower	Upper
117	20640		
119	4.8	76.5	114.7#
121	0.0	24.5	36.7#

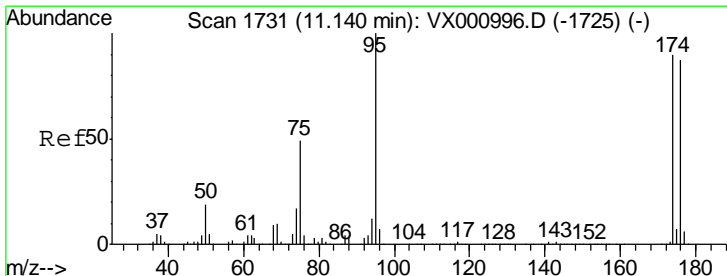
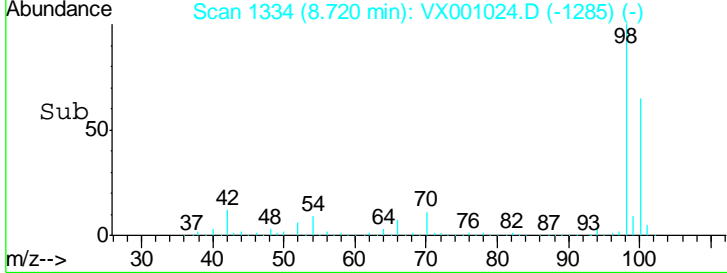
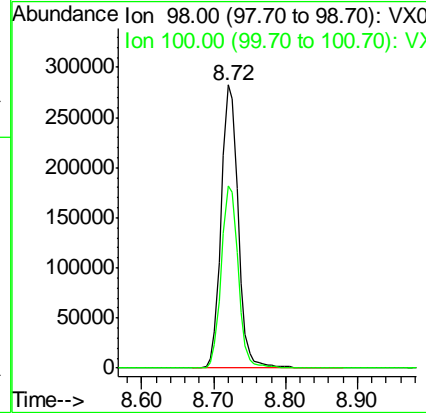
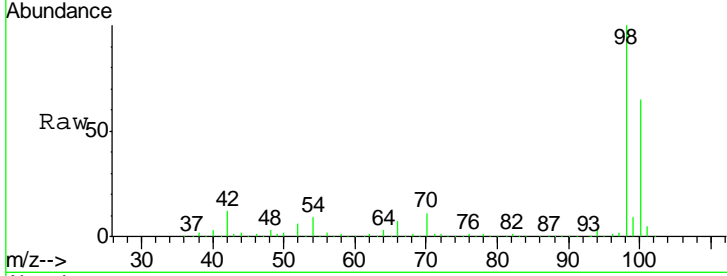




#50
 Toluene-d8
 Concen: 50.03 ug/l
 RT: 8.72 min Scan# 1334
 Delta R.T. 0.00 min
 Lab File: VX001024.D
 Acq: 20 Apr 2018 22:39

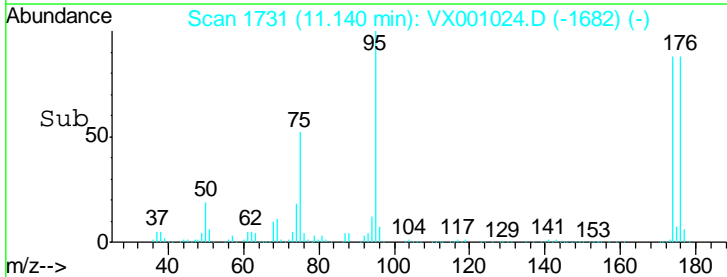
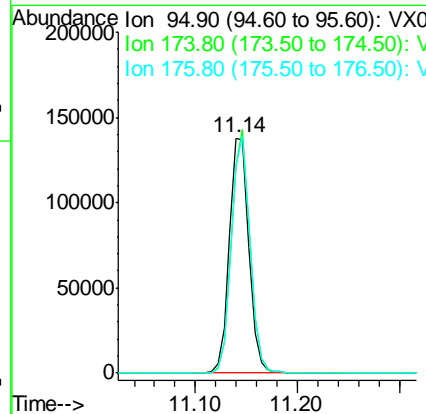
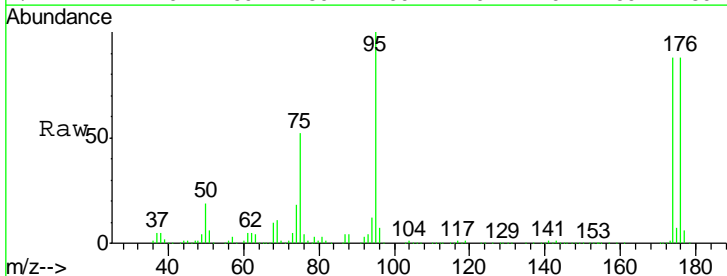
Instrument :
 MSVOA_X
 ClientSampled :

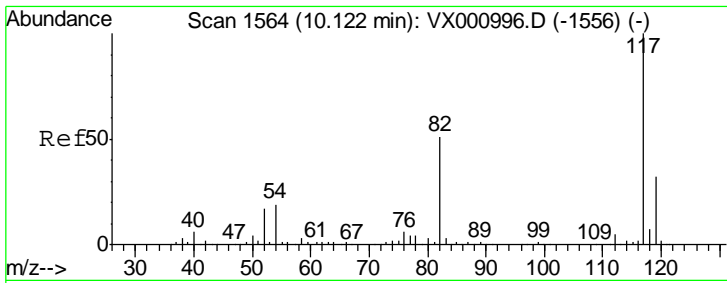
Tot Ion: 98 Resp: 462541
 Ion Ratio Lower Upper
 98 100
 100 64.4 51.9 77.9



#62
 4-Bromofluorobenzene
 Concen: 46.97 ug/l
 RT: 11.14 min Scan# 1731
 Delta R.T. 0.00 min
 Lab File: VX001024.D
 Acq: 20 Apr 2018 22:39

Tgt Ion: 95 Resp: 182272
 Ion Ratio Lower Upper
 95 100
 174 97.1 0.0 198.4
 176 95.8 0.0 192.0

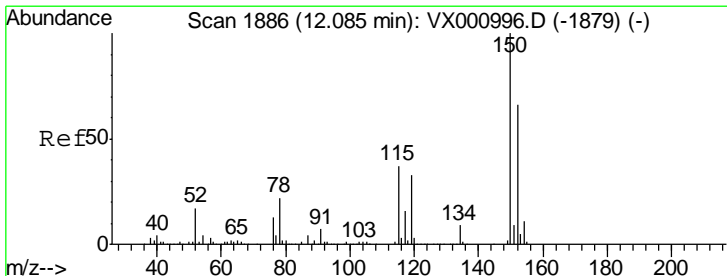
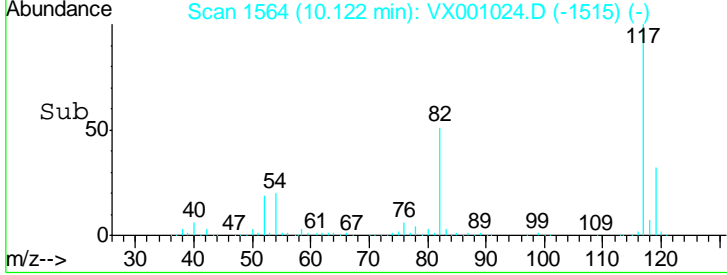
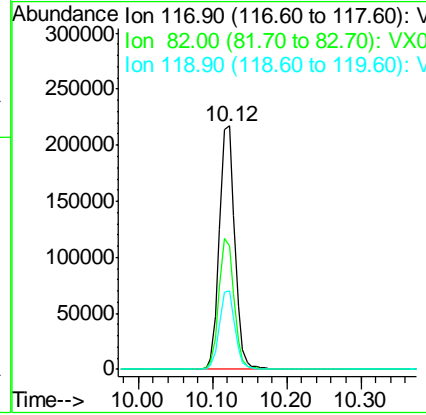
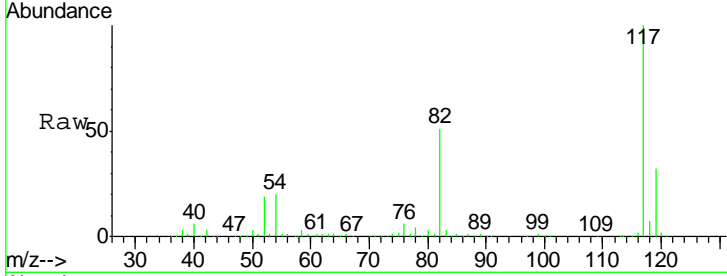




#63
 Chlorobenzene-d5
 Concen: 50.00 ug/l
 RT: 10.12 min Scan# 1564
 Delta R.T. 0.00 min
 Lab File: VX001024.D
 Acq: 20 Apr 2018 22:39

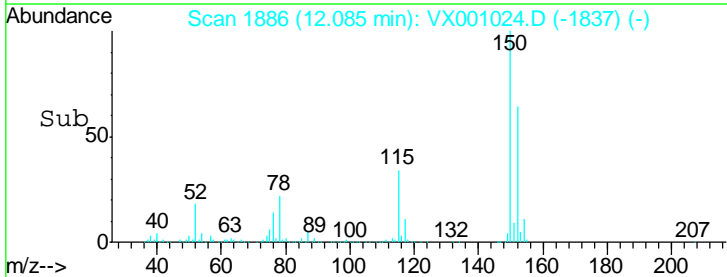
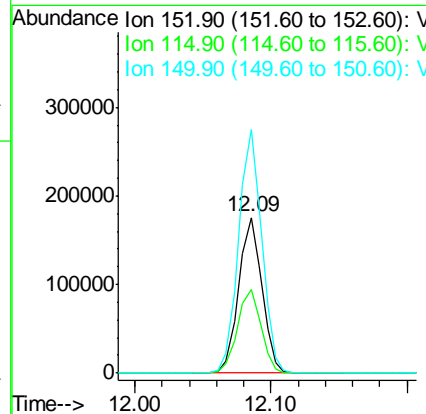
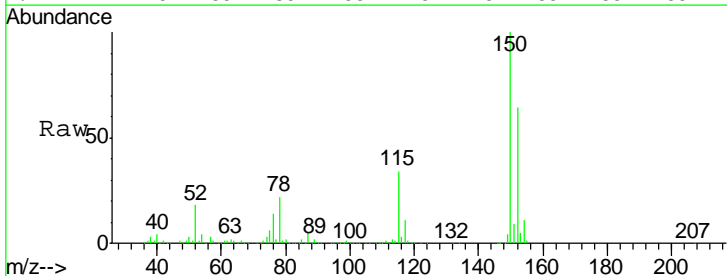
Instrument : MSVOA_X
 ClientSampled :

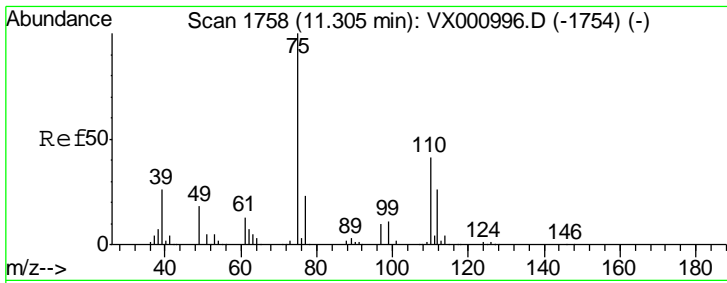
Tgt Ion	Resp	Lower	Upper
117	308894		
82	50.9	40.6	60.8
119	32.4	26.0	39.0



#72
 1,4-Dichlorobenzene-d4
 Concen: 50.00 ug/l
 RT: 12.09 min Scan# 1886
 Delta R.T. 0.00 min
 Lab File: VX001024.D
 Acq: 20 Apr 2018 22:39

Tgt Ion	Resp	Lower	Upper
152	209022		
115	54.4	38.2	114.6
150	156.3	0.0	350.4

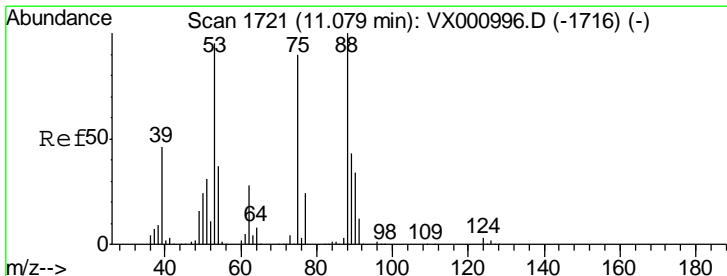
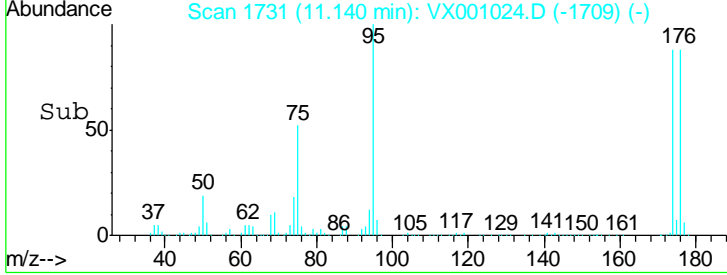
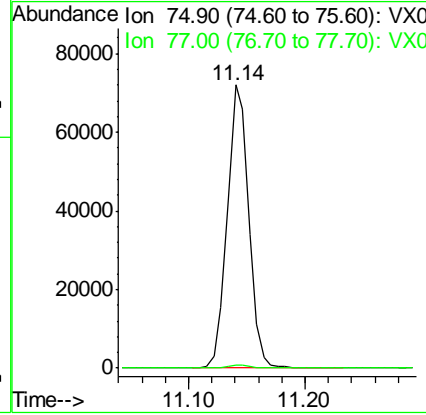
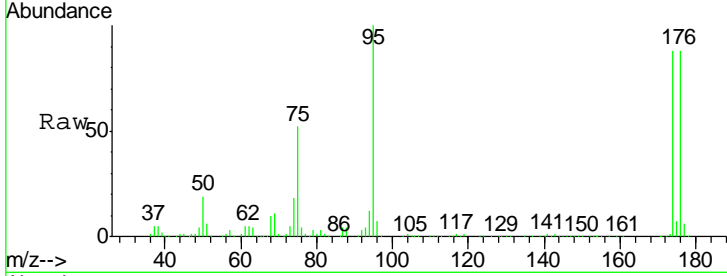




#76
 1,2,3-Trichloropropane
 Concen: 25.19 ug/l
 RT: 11.14 min Scan# 1731
 Delta R.T. -0.16 min
 Lab File: VX001024.D
 Acq: 20 Apr 2018 22:39

Instrument :
 MSVOA_X
 ClientSampled :

Tgt Ion: 75 Resp: 91368
 Ion Ratio Lower Upper
 75 100
 77 1.2 19.6 58.7#



#81
 trans-1,4-Dichloro-2-butene
 Concen: 75.54 ug/l
 RT: 11.14 min Scan# 1731
 Delta R.T. 0.06 min
 Lab File: VX001024.D
 Acq: 20 Apr 2018 22:39

Tgt Ion: 75 Resp: 91368
 Ion Ratio Lower Upper
 75 100
 53 0.0 83.4 125.2#
 89 0.0 39.7 59.5#

