

Data File : VX001080.D

Acq On : 24 Apr 2018 16:46

Operator : JC/MD

Sample : J2349-14DL 5X

Misc : 5.0mL/MSVOA_X/WATER

ALS Vial : 6 Sample Multiplier: 1

Instrument :
MSVOA_X
ClientSampleId :
LF012RW163-180411DL

Quant Time: Apr 25 07:18:44 2018

Quant Method : W:\HPCHEM1\MSVOA_X\METHOD\82X041918W.M

Quant Title : SW846 8260

QLast Update : Fri Apr 20 05:03:28 2018

Response via : Initial Calibration

Internal Standards	R.T.	QIon	Response	Conc	Units	Dev(Min)
1) Pentafluorobenzene	5.67	168	243463	50.00	ug/l	0.00
34) 1,4-Difluorobenzene	6.87	114	335350	50.00	ug/l	0.00
63) Chlorobenzene-d5	10.12	117	282554	50.00	ug/l	0.00
72) 1,4-Dichlorobenzene-d4	12.09	152	148736	50.00	ug/l	0.00

System Monitoring Compounds

33) 1,2-Dichloroethane-d4	6.07	65	170392	55.21	ug/l	0.00
Spiked Amount	50.000		Recovery	=	110.42%	
35) Dibromofluoromethane	5.51	113	131259	51.33	ug/l	0.00
Spiked Amount	50.000		Recovery	=	102.66%	
50) Toluene-d8	8.72	98	491354	51.96	ug/l	0.00
Spiked Amount	50.000		Recovery	=	103.92%	
62) 4-Bromofluorobenzene	11.14	95	161729	40.76	ug/l	0.00
Spiked Amount	50.000		Recovery	=	81.52%	

Target Compounds

						Qvalue
4) Vinyl Chloride	1.40	62	3644	1.25	ug/l	98
5) Bromomethane	1.65	94	660	Below	Cal	# 70
10) Methyl Iodide	2.53	142	470	7.76	ug/l	# 77
12) 1,1-Dichloroethene	2.37	96	909	0.38	ug/l	91
13) Acrolein	2.30	56	254	12.61	ug/l	# 14
15) Acrylonitrile	3.15	53	653	0.52	ug/l	# 82
16) Acetone	2.45	43	880	0.76	ug/l	# 86
17) Carbon Disulfide	2.57	76	1369	0.20	ug/l	# 88
20) Methylene Chloride	2.86	84	1723	Below	Cal	# 87
27) cis-1,2-Dichloroethene	4.60	96	112597	38.28	ug/l	89
29) Tetrahydrofuran	5.19	42	617	0.54	ug/l	# 64
38) Carbon Tetrachloride	5.67	117	21497	5.39	ug/l	# 17
44) Trichloroethene	7.23	130	793	0.24	ug/l	99
65) Chlorobenzene	10.15	112	15625	2.08	ug/l	98
76) 1,2,3-Trichloropropane	11.14	75	82466	31.96	ug/l	# 38
81) trans-1,4-Dichloro-2-buten	11.14	75	82466	94.95	ug/l	# 8
91) 1,2-Dichlorobenzene	12.40	146	2472	0.48	ug/l	95
93) 1,2,4-Trichlorobenzene	13.65	180	863	0.20	ug/l	93
94) Hexachlorobutadiene	13.79	225	504	0.26	ug/l	86

(#) = qualifier out of range (m) = manual integration (+) = signals summed

Data File : VX001080.D

Acq On : 24 Apr 2018 16:46

Operator : JC/MD

Sample : J2349-14DL 5X

Misc : 5.0mL/MSVOA_X/WATER

ALS Vial : 6 Sample Multiplier: 1

Instrument : MSVOA_X
Client Sample ID : LF012RW163-180411DL

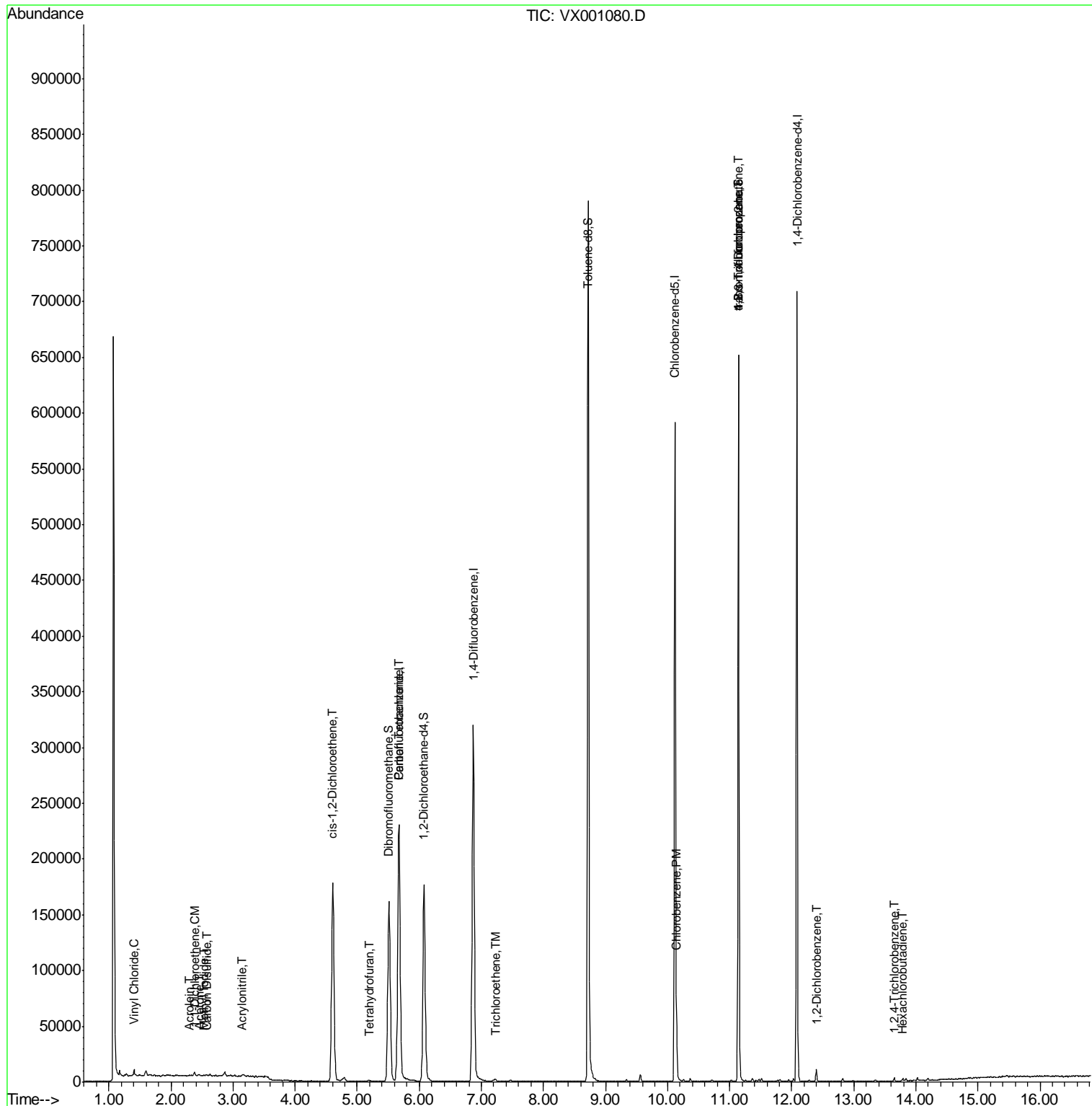
Quant Time: Apr 25 07:18:44 2018

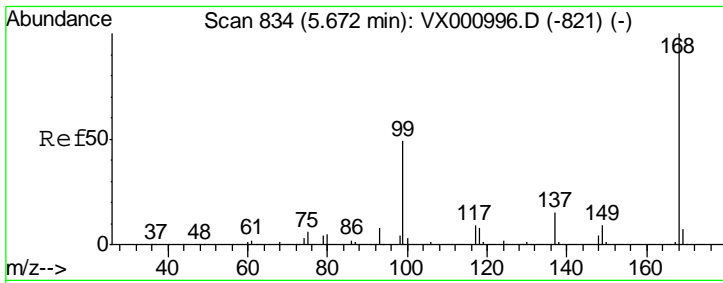
Quant Method : W:\HPCHEM1\MSVOA_X\METHOD\82X041918W.M

Quant Title : SW846 8260

QLast Update : Fri Apr 20 05:03:28 2018

Response via : Initial Calibration

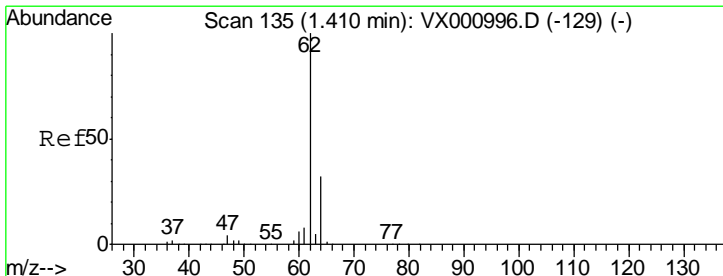
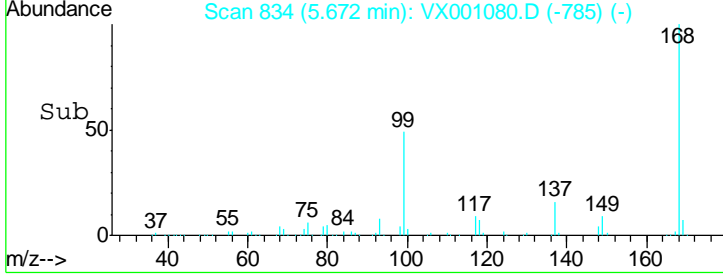
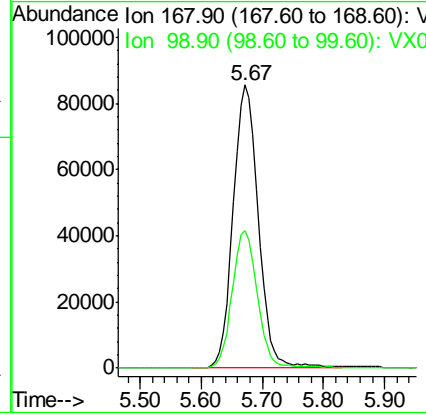
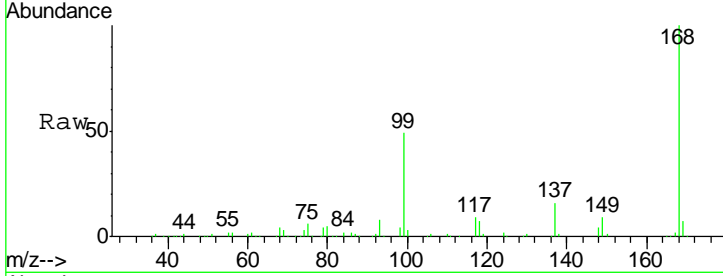




#1
 Pentafluorobenzene
 Concen: 50.00 ug/l
 RT: 5.67 min Scan# 834
 Delta R.T. 0.00 min
 Lab File: VX001080.D
 Acq: 24 Apr 2018 16:46

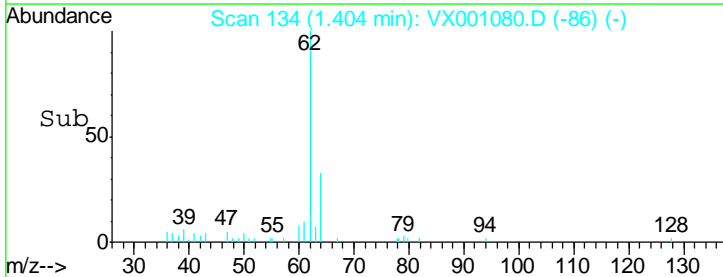
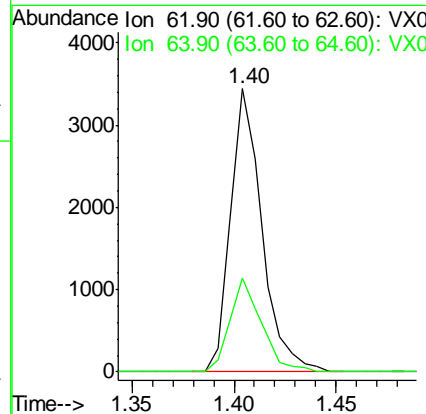
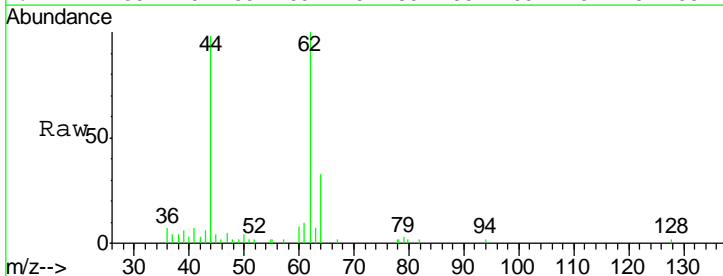
Instrument : MSVOA_X
 ClientSampleId : LF012RW163-180411DL

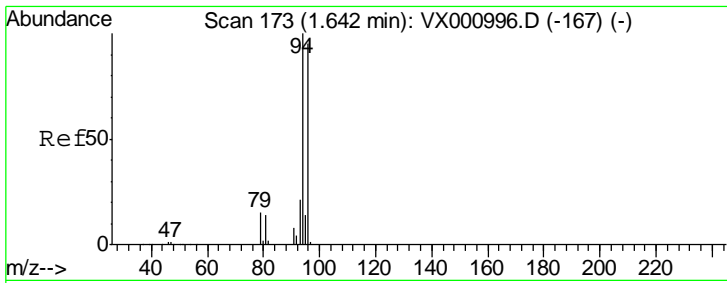
Tgt Ion: 168 Resp: 243463
 Ion Ratio Lower Upper
 168 100
 99 48.6 39.2 58.8



#4
 Vinyl Chloride
 Concen: 1.25 ug/l
 RT: 1.40 min Scan# 134
 Delta R.T. -0.01 min
 Lab File: VX001080.D
 Acq: 24 Apr 2018 16:46

Tgt Ion: 62 Resp: 3644
 Ion Ratio Lower Upper
 62 100
 64 33.2 25.6 38.4

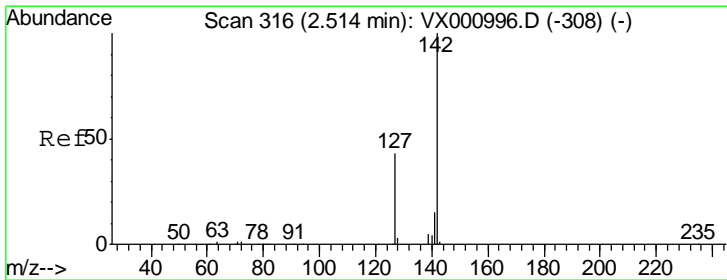
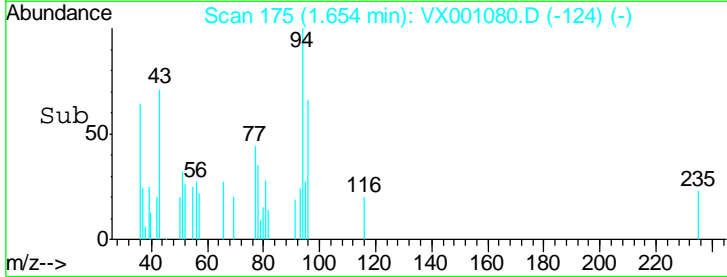
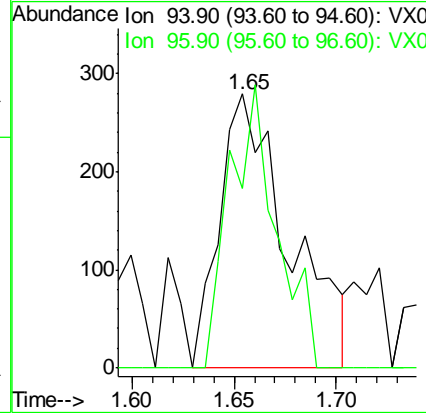
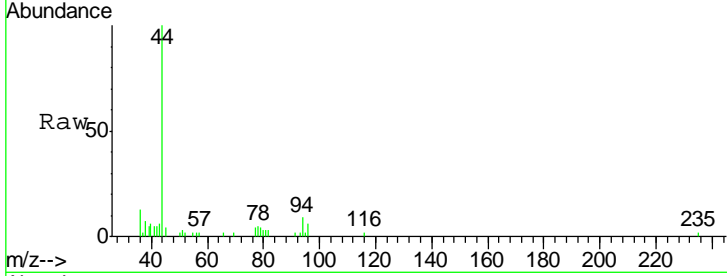




#5
 Bromomethane
 Concen: Below Cal
 RT: 1.65 min Scan# 175
 Delta R.T. 0.01 min
 Lab File: VX001080.D
 Acq: 24 Apr 2018 16:46

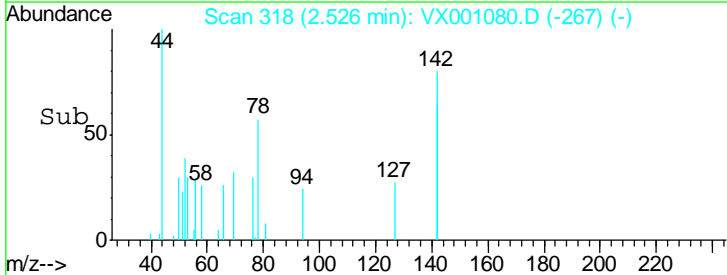
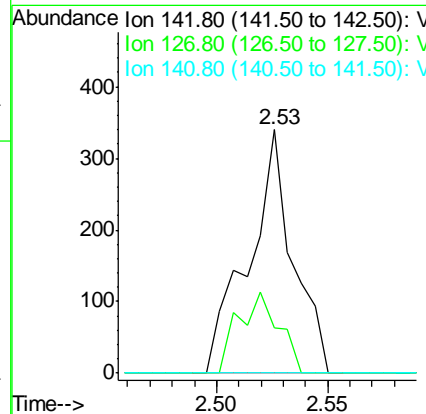
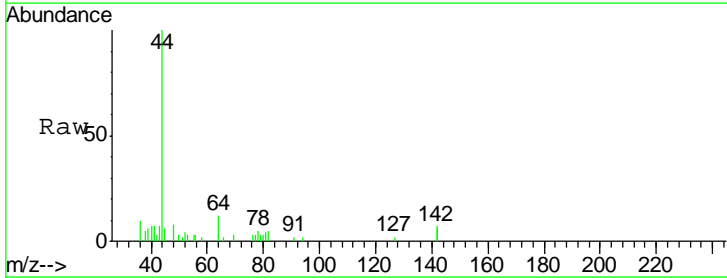
Instrument : MSVOA_X
 ClientSampleID : LF012RW163-180411DL

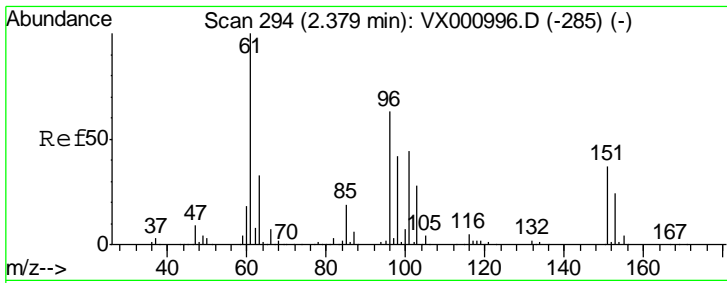
Tgt Ion: 94 Resp: 660
 Ion Ratio Lower Upper
 94 100
 96 65.6 76.0 114.0#



#10
 Methyl Iodide
 Concen: 7.76 ug/l
 RT: 2.53 min Scan# 318
 Delta R.T. 0.01 min
 Lab File: VX001080.D
 Acq: 24 Apr 2018 16:46

Tgt Ion: 142 Resp: 470
 Ion Ratio Lower Upper
 142 100
 127 30.2 34.0 51.0#
 141 0.0 11.4 17.2#

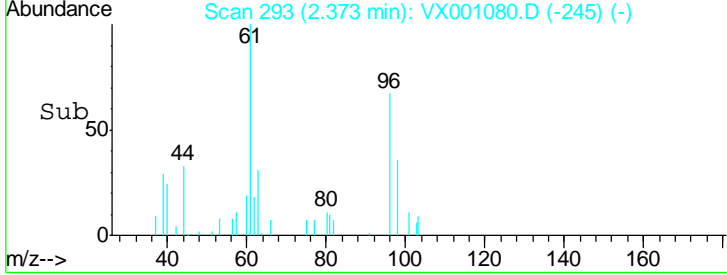
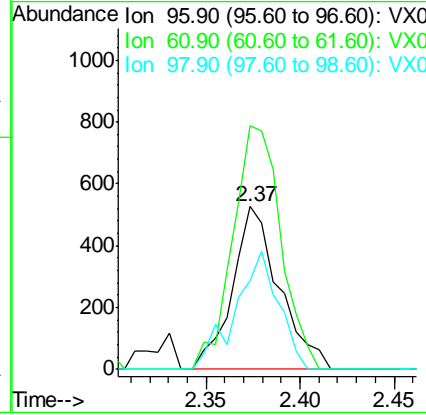
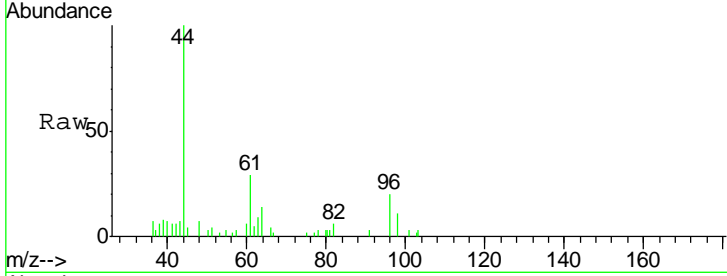




#12
 1,1-Dichloroethene
 Concen: 0.38 ug/l
 RT: 2.37 min Scan# 293
 Delta R.T. -0.01 min
 Lab File: VX001080.D
 Acq: 24 Apr 2018 16:46

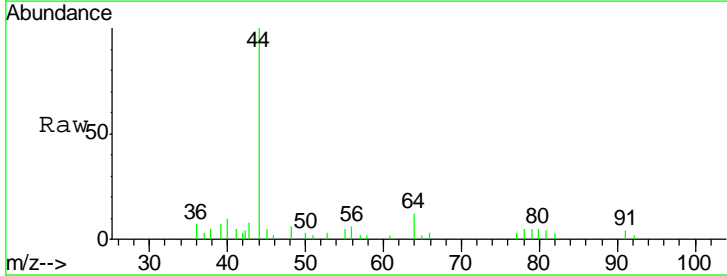
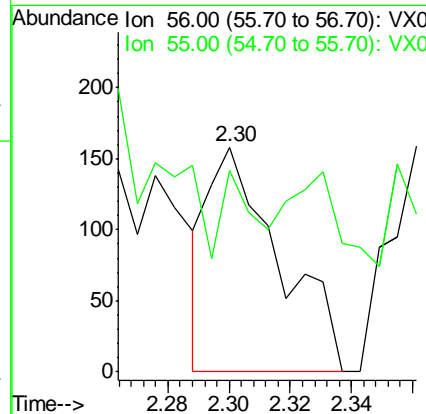
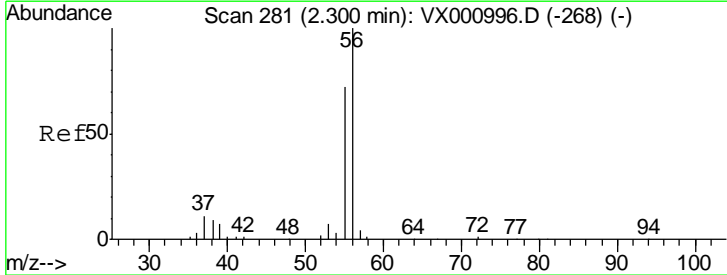
Instrument :
 MSVOA_X
ClientSampled :
 LF012RW163-180411DL

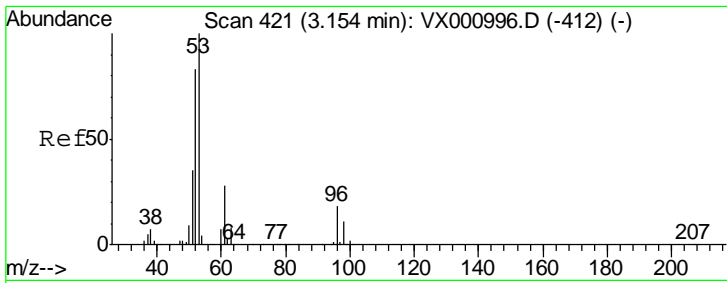
Tgt Ion	Resp	Lower	Upper
96	100		
61	149.5	126.4	189.6
98	54.5	52.6	78.8



#13
 Acrolein
 Concen: 12.61 ug/l
 RT: 2.30 min Scan# 281
 Delta R.T. 0.00 min
 Lab File: VX001080.D
 Acq: 24 Apr 2018 16:46

Tgt Ion	Resp	Lower	Upper
56	100		
55	0.0	57.4	86.2#

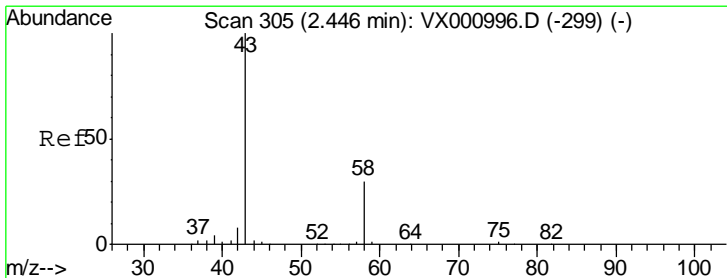
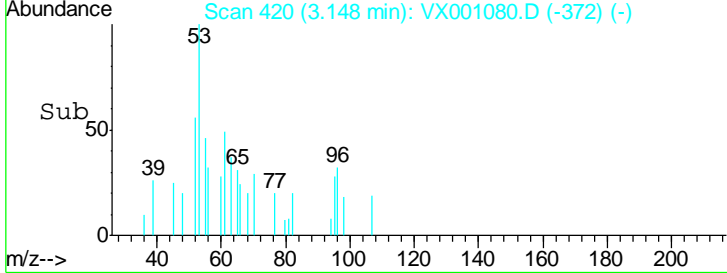
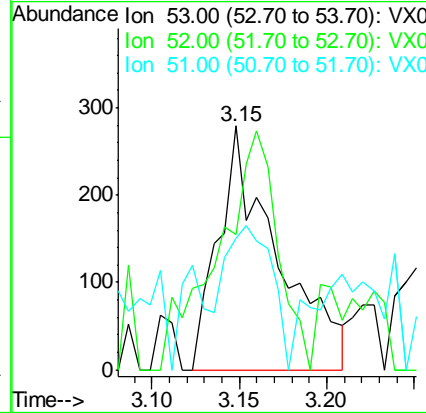
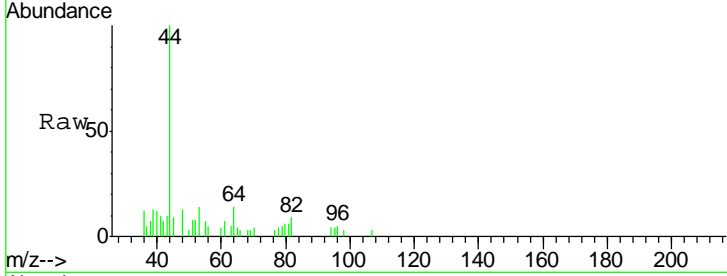




#15
 Acrylonitrile
 Concen: 0.52 ug/l
 RT: 3.15 min Scan# 420
 Delta R.T. -0.01 min
 Lab File: VX001080.D
 Acq: 24 Apr 2018 16:46

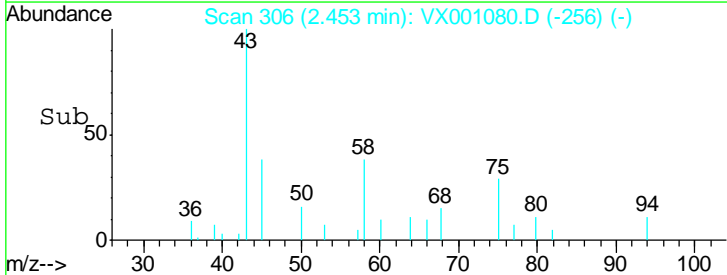
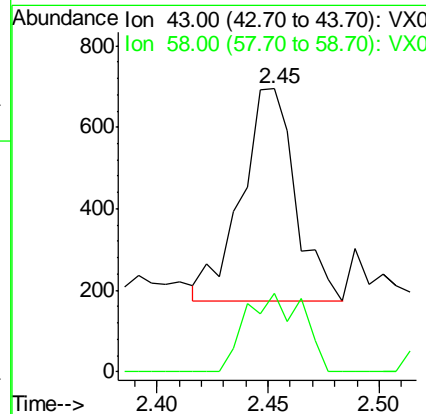
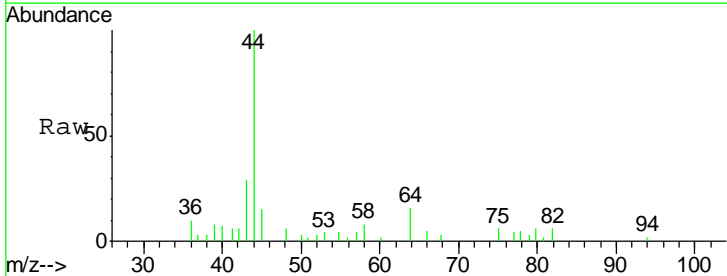
Instrument :
 MSVOA_X
ClientSampled :
 LF012RW163-180411DL

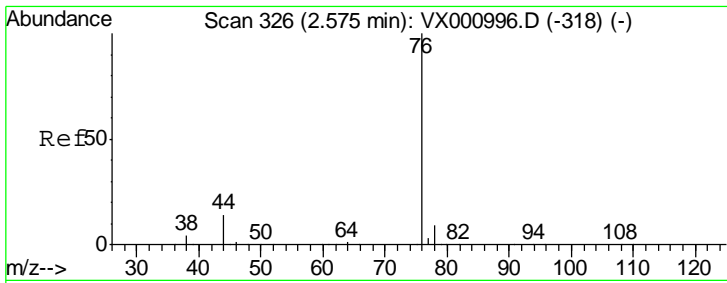
Tgt Ion	Resp	Lower	Upper
53	100		
52	99.4	66.4	99.6
51	46.1	29.0	43.6#



#16
 Acetone
 Concen: 0.76 ug/l
 RT: 2.45 min Scan# 306
 Delta R.T. 0.01 min
 Lab File: VX001080.D
 Acq: 24 Apr 2018 16:46

Tgt Ion	Resp	Lower	Upper
43	100		
58	37.1	23.7	35.5#

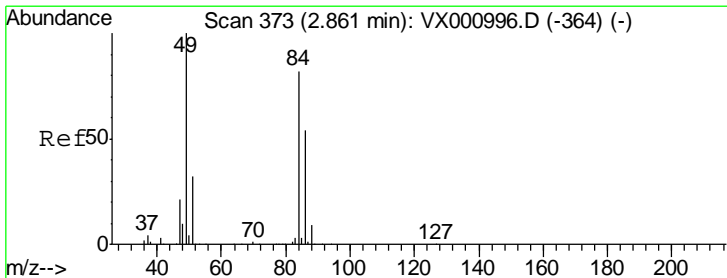
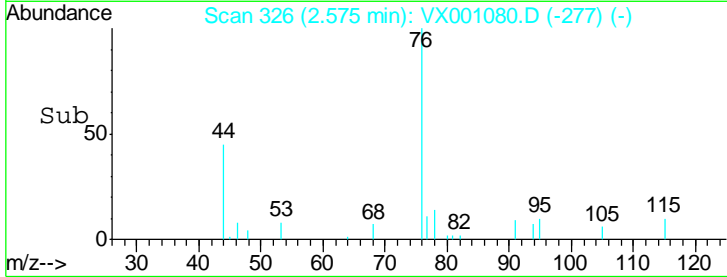
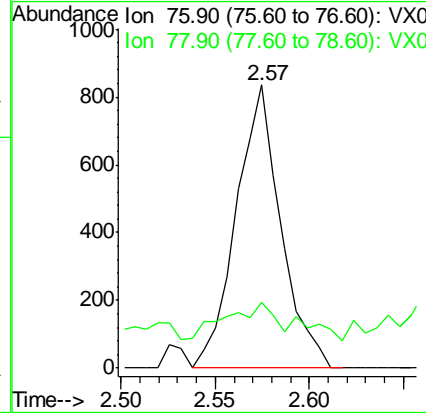
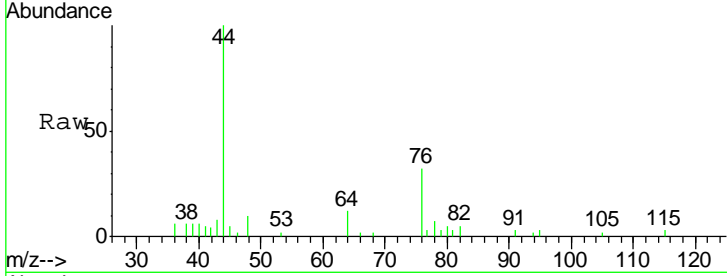




#17
 Carbon Disulfide
 Concen: 0.20 ug/l
 RT: 2.57 min Scan# 326
 Delta R.T. 0.00 min
 Lab File: VX001080.D
 Acq: 24 Apr 2018 16:46

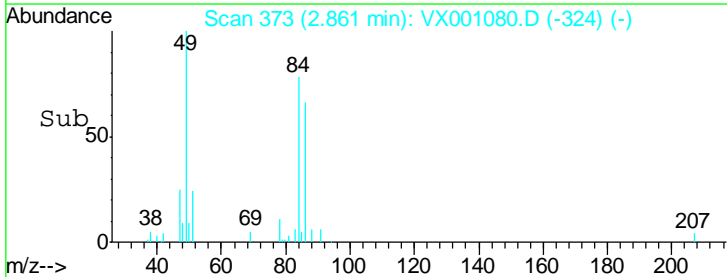
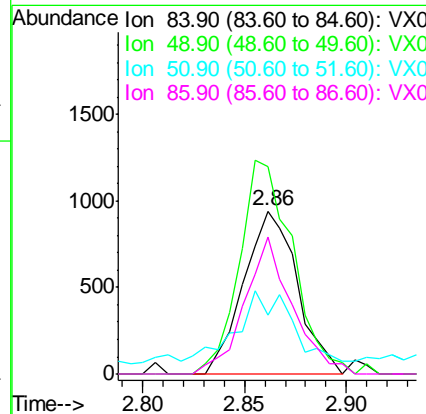
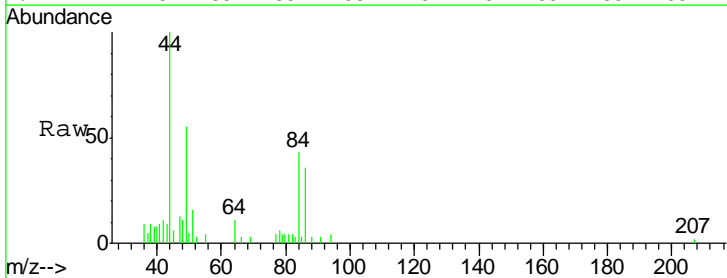
Instrument :
 MSVOA_X
 ClientSampleID :
 LF012RW163-180411DL

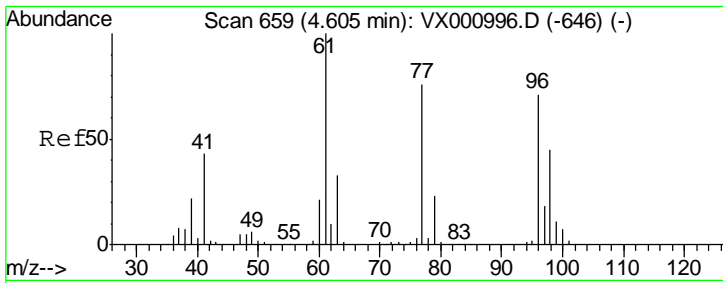
Tgt Ion: 76 Resp: 1369
 Ion Ratio Lower Upper
 76 100
 78 13.5 7.3 10.9#



#20
 Methylene Chloride
 Concen: Below Cal
 RT: 2.86 min Scan# 373
 Delta R.T. 0.00 min
 Lab File: VX001080.D
 Acq: 24 Apr 2018 16:46

Tgt Ion: 84 Resp: 1723
 Ion Ratio Lower Upper
 84 100
 49 127.5 97.1 145.7
 51 28.8 30.8 46.2#
 86 84.0 52.3 78.5#

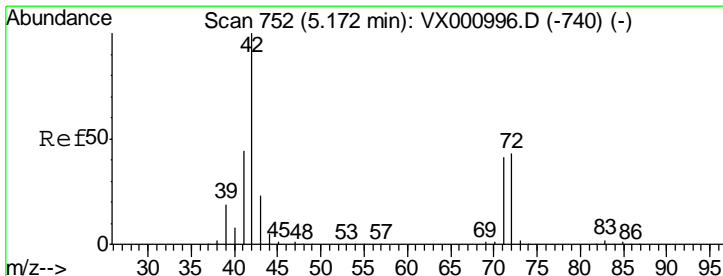
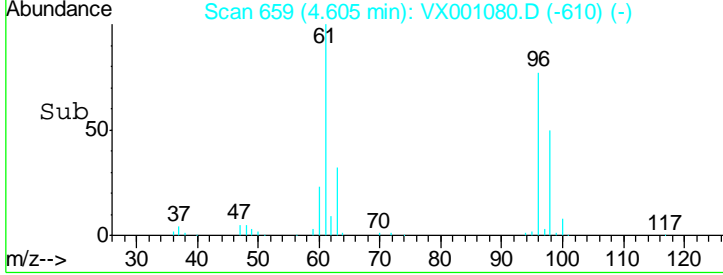
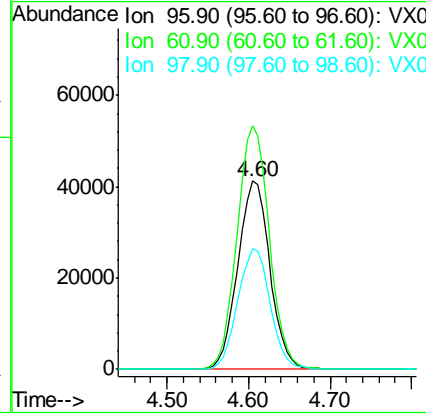
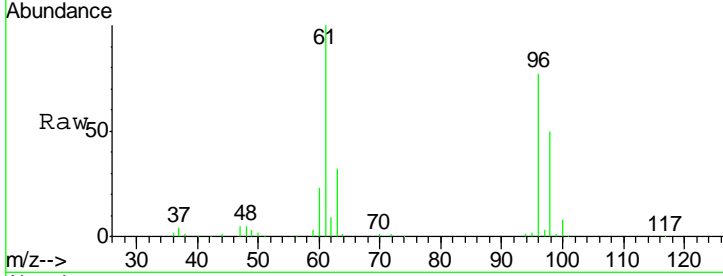




#27
 cis-1,2-Dichloroethene
 Concen: 38.28 ug/l
 RT: 4.60 min Scan# 659
 Delta R.T. 0.00 min
 Lab File: VX001080.D
 Acq: 24 Apr 2018 16:46

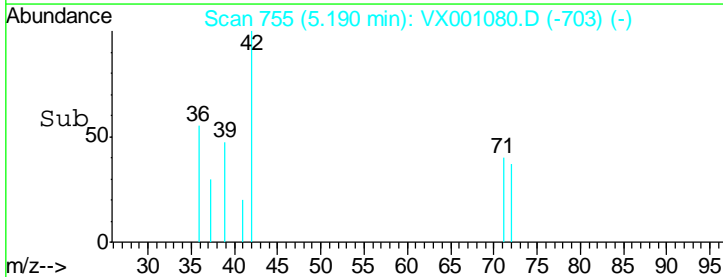
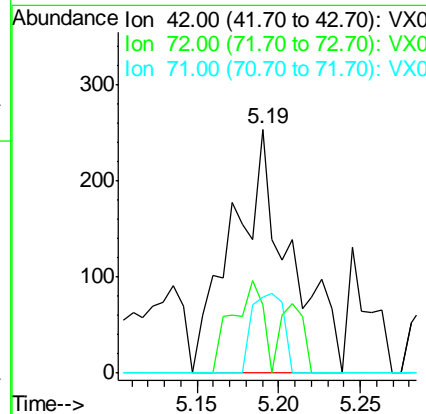
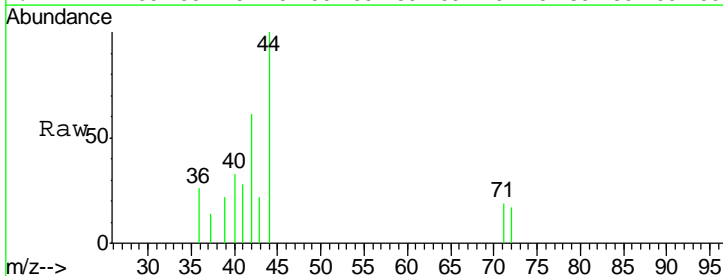
Instrument :
 MSVOA_X
ClientSampled :
 LF012RW163-180411DL

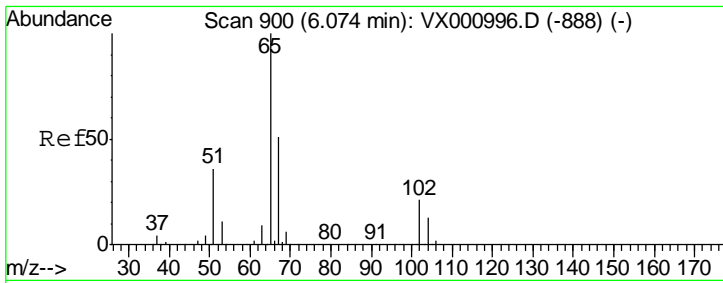
Tgt Ion	Resp	Lower	Upper
96	112597		
Ion Ratio			
96	100		
61	129.6	0.0	297.0
98	64.7	0.0	130.0



#29
 Tetrahydrofuran
 Concen: 0.54 ug/l
 RT: 5.19 min Scan# 755
 Delta R.T. 0.02 min
 Lab File: VX001080.D
 Acq: 24 Apr 2018 16:46

Tgt Ion	Resp	Lower	Upper
42	617		
Ion Ratio			
42	100		
72	20.4	34.6	52.0#
71	18.0	32.6	49.0#

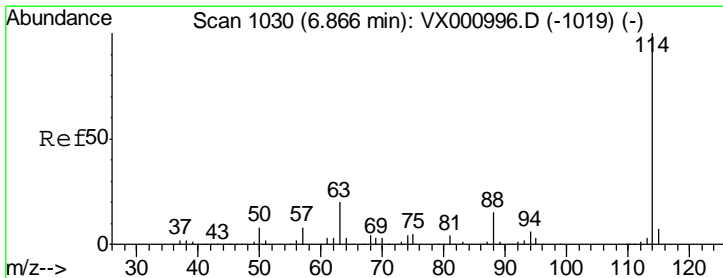
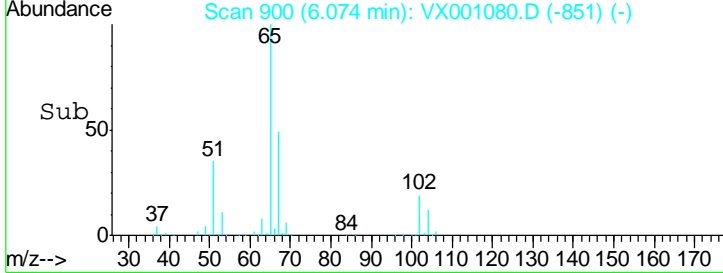
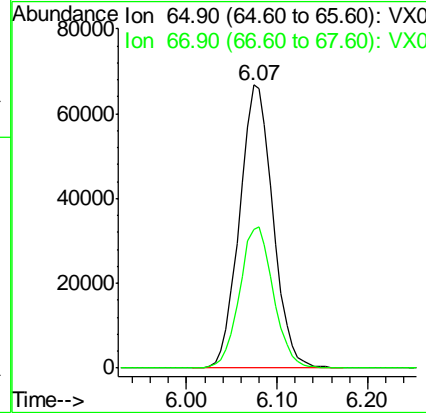
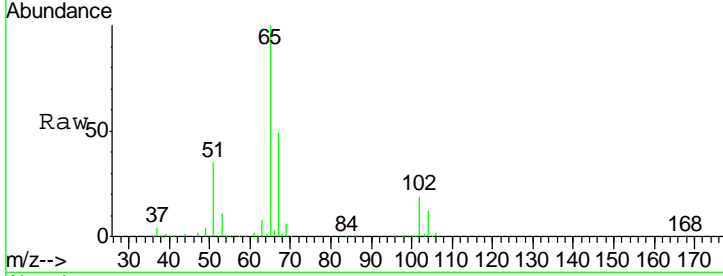




#33
 1,2-Dichloroethane-d4
 Concen: 55.21 ug/l
 RT: 6.07 min Scan# 900
 Delta R.T. 0.00 min
 Lab File: VX001080.D
 Acq: 24 Apr 2018 16:46

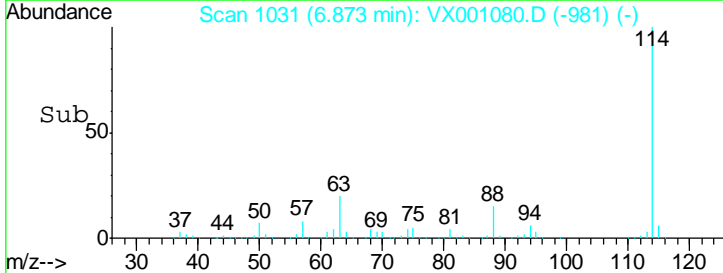
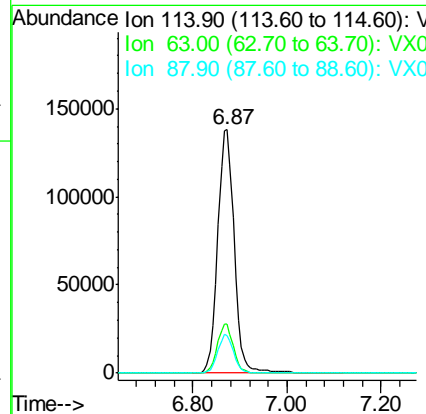
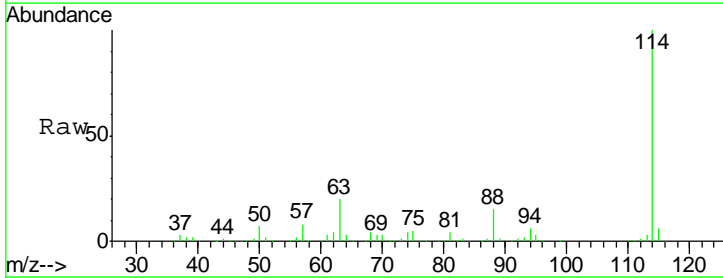
Instrument :
 MSVOA_X
ClientSampled :
 LF012RW163-180411DL

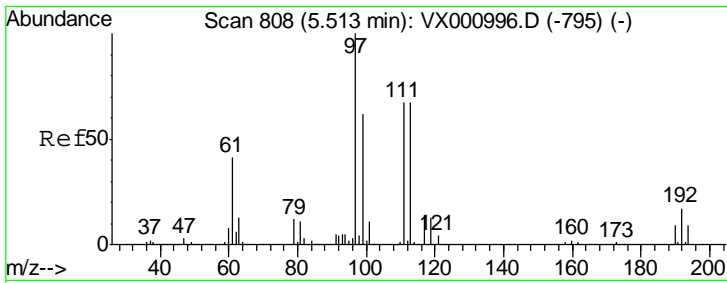
Tgt Ion	Resp	Lower	Upper
65	170392		
67	50.4	0.0	102.6



#34
 1,4-Difluorobenzene
 Concen: 50.00 ug/l
 RT: 6.87 min Scan# 1031
 Delta R.T. 0.01 min
 Lab File: VX001080.D
 Acq: 24 Apr 2018 16:46

Tgt Ion	Resp	Lower	Upper
114	335350		
63	20.2	0.0	39.4
88	15.4	0.0	29.8

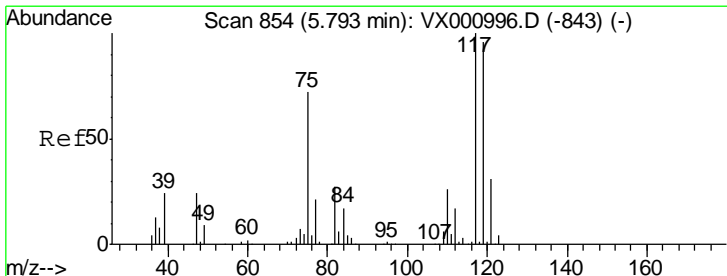
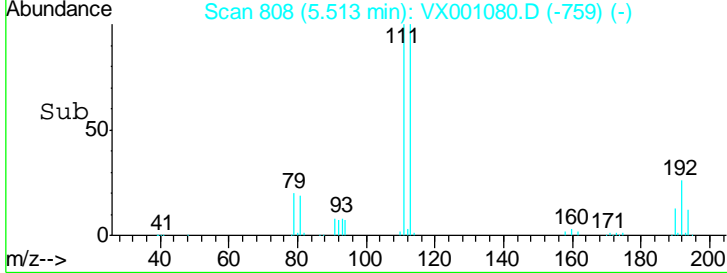
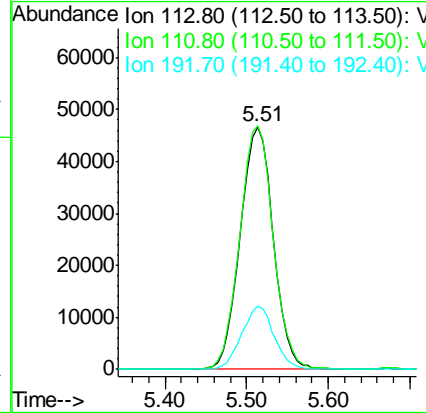
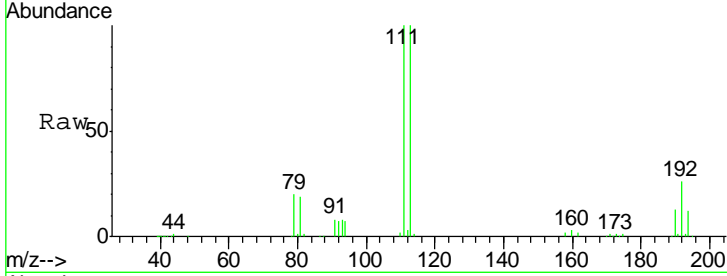




#35
 Dibromofluoromethane
 Concen: 51.33 ug/l
 RT: 5.51 min Scan# 808
 Delta R.T. 0.00 min
 Lab File: VX001080.D
 Acq: 24 Apr 2018 16:46

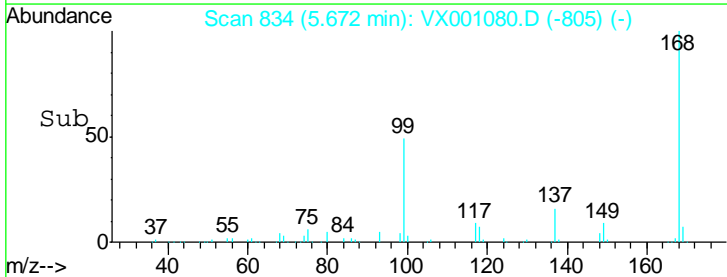
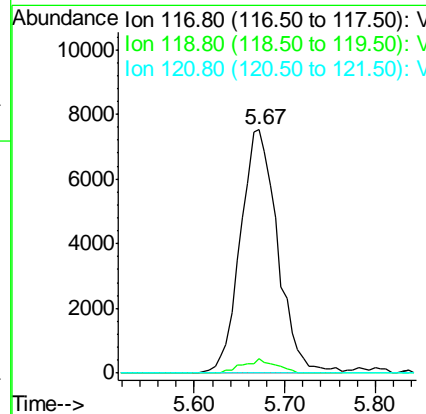
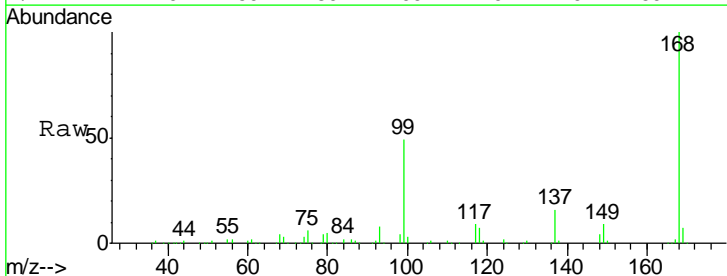
Instrument : MSVOA_X
 ClientSampleID : LF012RW163-180411DL

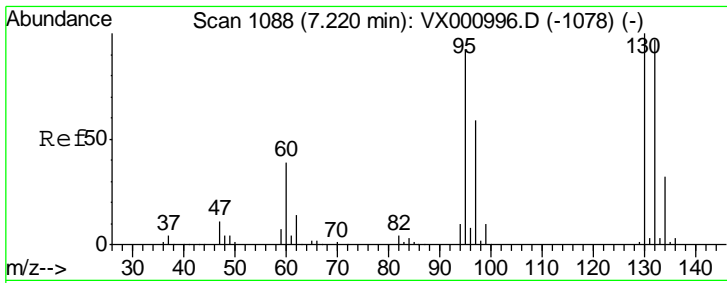
Tgt Ion	Resp	Lower	Upper
113	131259		
111	101.6	81.4	122.2
192	25.4	20.4	30.6



#38
 Carbon Tetrachloride
 Concen: 5.39 ug/l
 RT: 5.67 min Scan# 834
 Delta R.T. -0.12 min
 Lab File: VX001080.D
 Acq: 24 Apr 2018 16:46

Tgt Ion	Resp	Lower	Upper
117	21497		
119	5.7	76.5	114.7#
121	0.0	24.5	36.7#

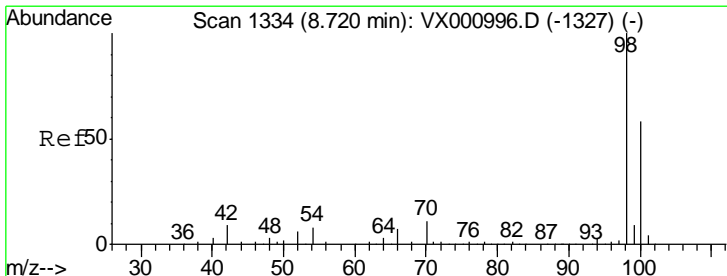
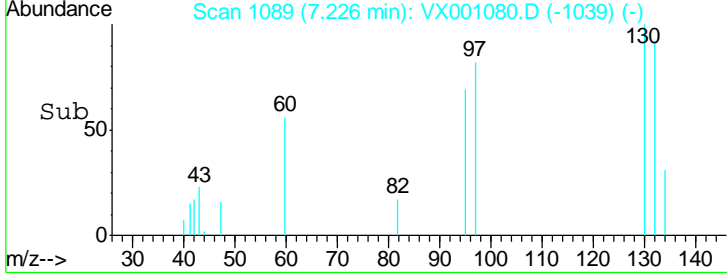
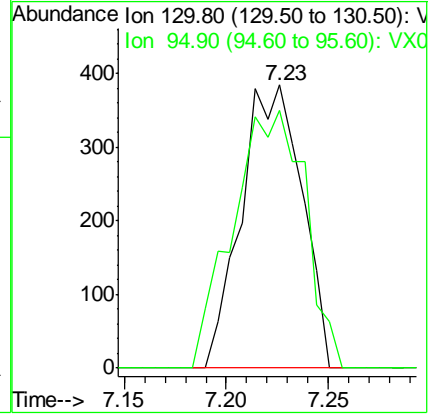
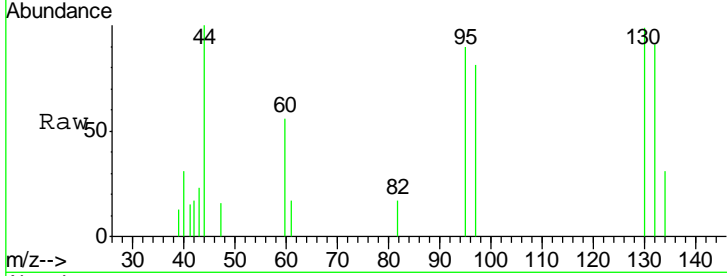




#44
 Trichloroethene
 Concen: 0.24 ug/l
 RT: 7.23 min Scan# 1089
 Delta R.T. 0.01 min
 Lab File: VX001080.D
 Acq: 24 Apr 2018 16:46

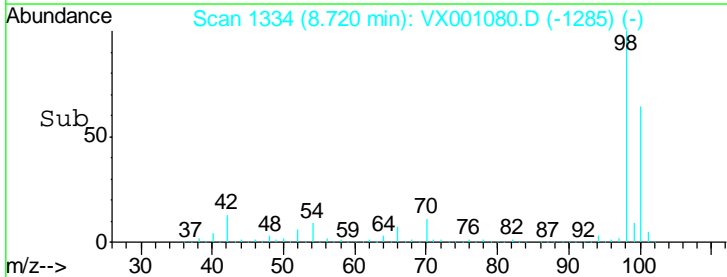
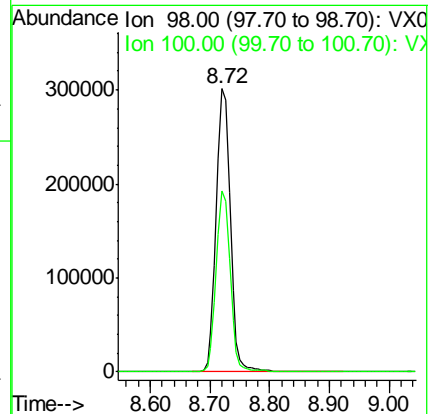
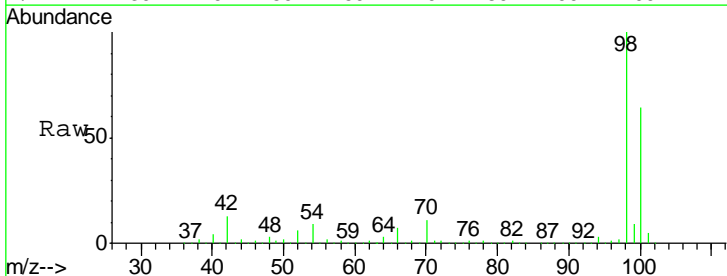
Instrument : MSVOA_X
 ClientSampled : LF012RW163-180411DL

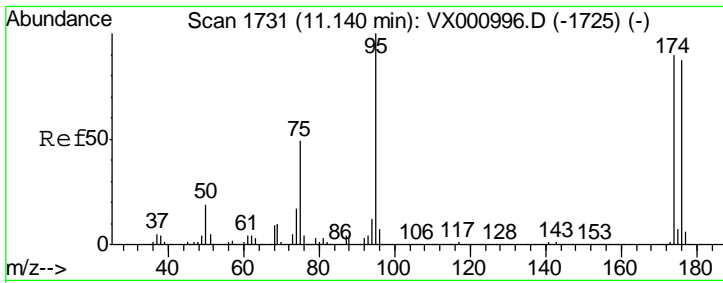
Tgt Ion: 130 Resp: 793
 Ion Ratio Lower Upper
 130 100
 95 90.9 0.0 184.2



#50
 Toluene-d8
 Concen: 51.96 ug/l
 RT: 8.72 min Scan# 1334
 Delta R.T. 0.00 min
 Lab File: VX001080.D
 Acq: 24 Apr 2018 16:46

Tgt Ion: 98 Resp: 491354
 Ion Ratio Lower Upper
 98 100
 100 63.6 51.9 77.9



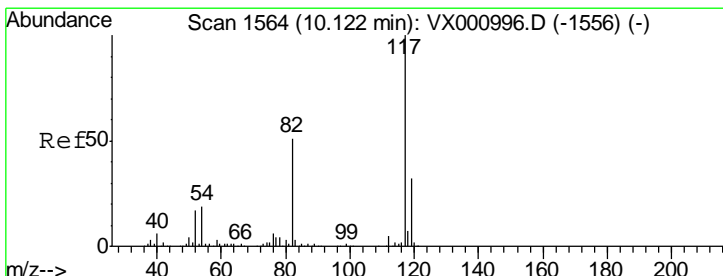
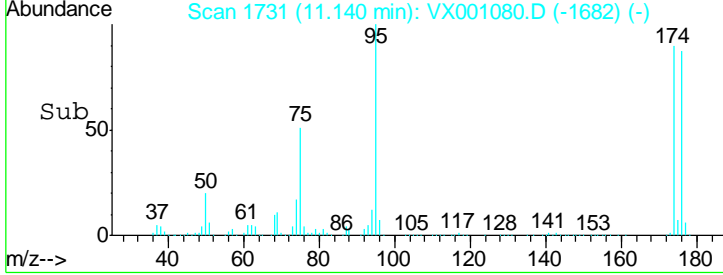
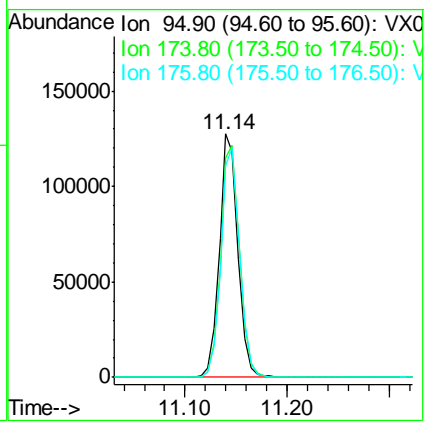
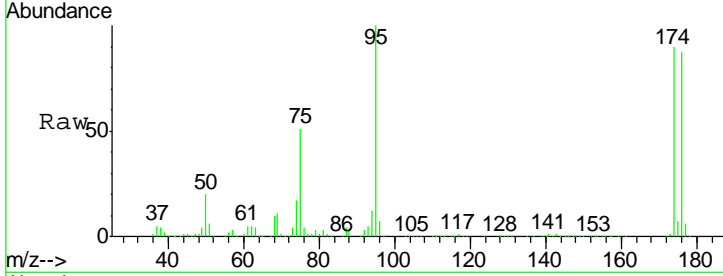


#62
 4-Bromofluorobenzene
 Concen: 40.76 ug/l
 RT: 11.14 min Scan# 1731
 Delta R.T. 0.00 min
 Lab File: VX001080.D
 Acq: 24 Apr 2018 16:46

Instrument : MSVOA_X
 ClientSampled : LF012RW163-180411DL

Tgt Ion: 95 Resp: 161729

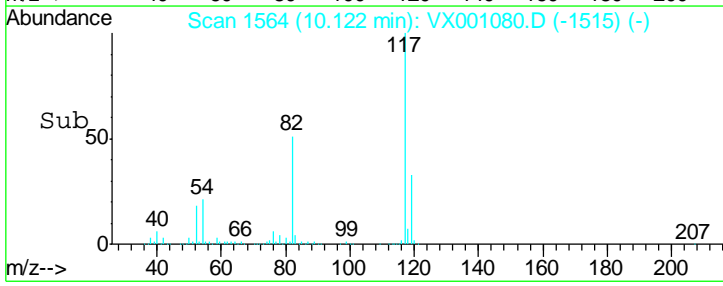
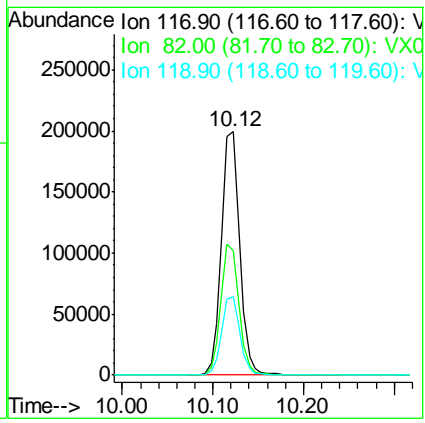
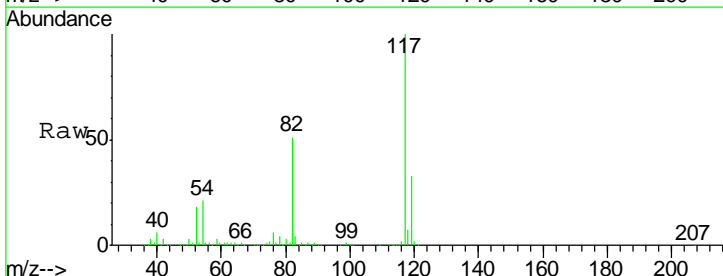
Ion	Ratio	Lower	Upper
95	100		
174	97.2	0.0	198.4
176	95.3	0.0	192.0

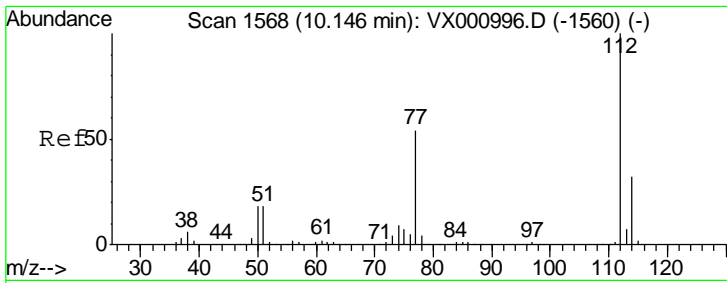


#63
 Chlorobenzene-d5
 Concen: 50.00 ug/l
 RT: 10.12 min Scan# 1564
 Delta R.T. 0.00 min
 Lab File: VX001080.D
 Acq: 24 Apr 2018 16:46

Tgt Ion: 117 Resp: 282554

Ion	Ratio	Lower	Upper
117	100		
82	51.0	40.6	60.8
119	32.5	26.0	39.0

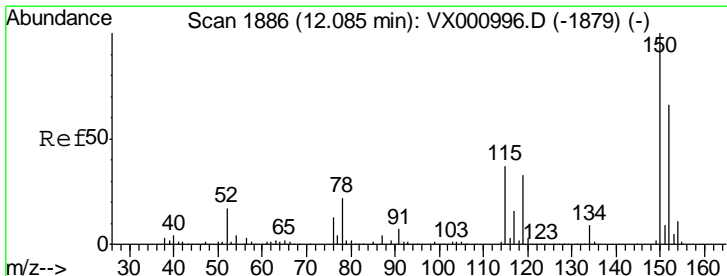
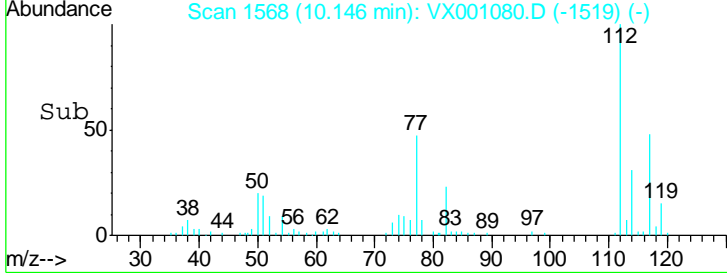
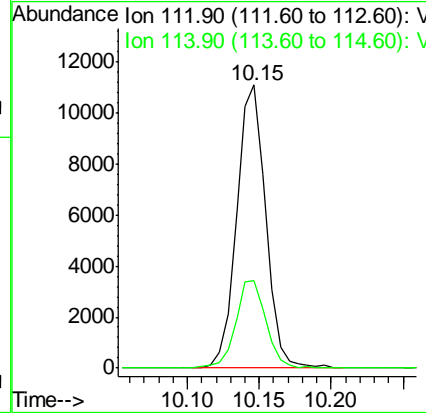
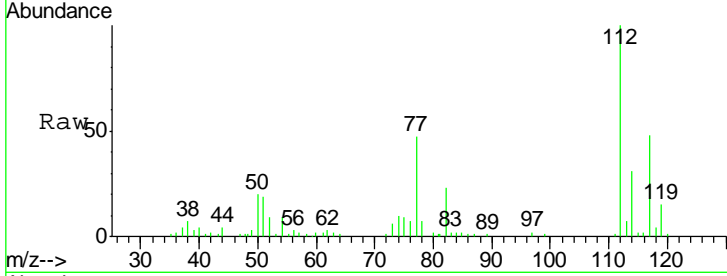




#65
 Chlorobenzene
 Concen: 2.08 ug/l
 RT: 10.15 min Scan# 1568
 Delta R.T. 0.00 min
 Lab File: VX001080.D
 Acq: 24 Apr 2018 16:46

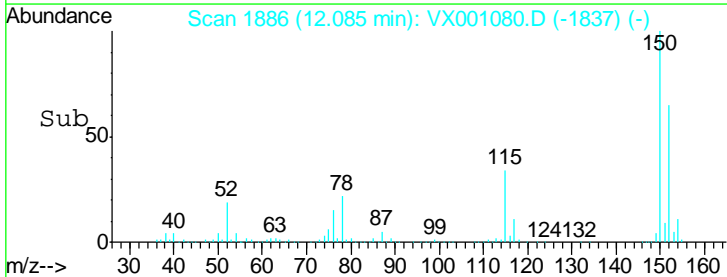
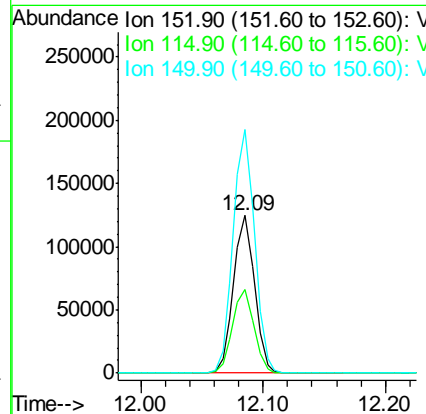
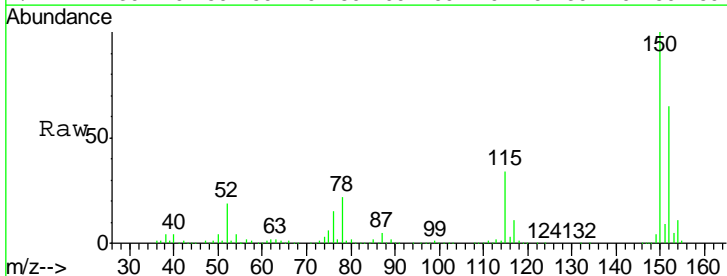
Instrument : MSVOA_X
 ClientSampleID : LF012RW163-180411DL

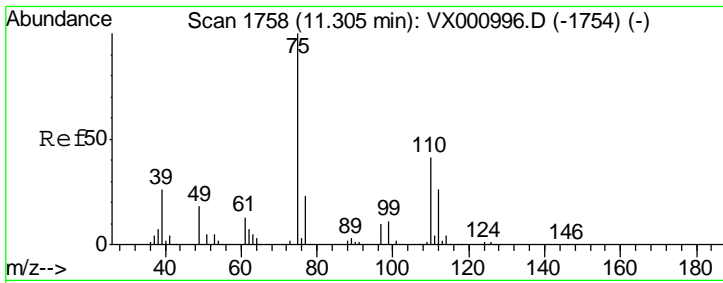
Tgt Ion: 112 Resp: 15625
 Ion Ratio Lower Upper
 112 100
 114 30.7 25.5 38.3



#72
 1,4-Dichlorobenzene-d4
 Concen: 50.00 ug/l
 RT: 12.09 min Scan# 1886
 Delta R.T. 0.00 min
 Lab File: VX001080.D
 Acq: 24 Apr 2018 16:46

Tgt Ion: 152 Resp: 148736
 Ion Ratio Lower Upper
 152 100
 115 53.7 38.2 114.6
 150 156.6 0.0 350.4

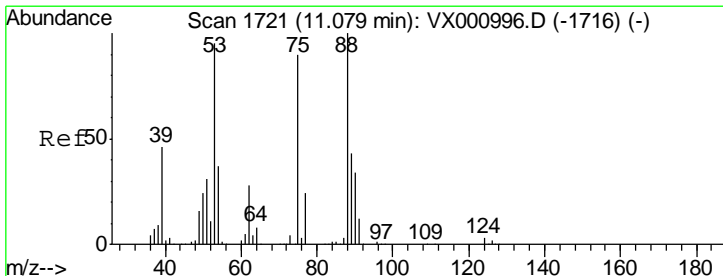
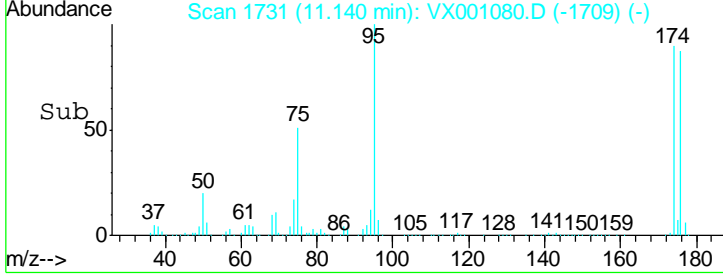
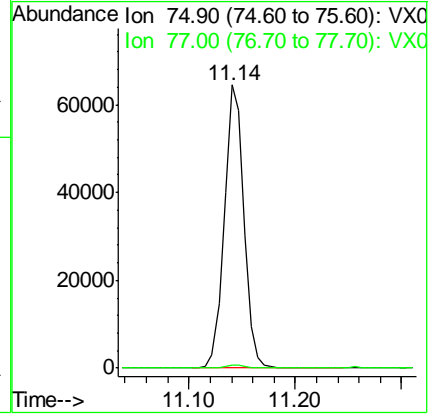
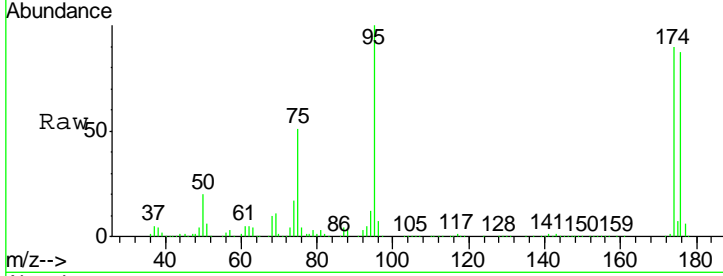




#76
 1,2,3-Trichloropropane
 Concen: 31.96 ug/l
 RT: 11.14 min Scan# 1731
 Delta R.T. -0.16 min
 Lab File: VX001080.D
 Acq: 24 Apr 2018 16:46

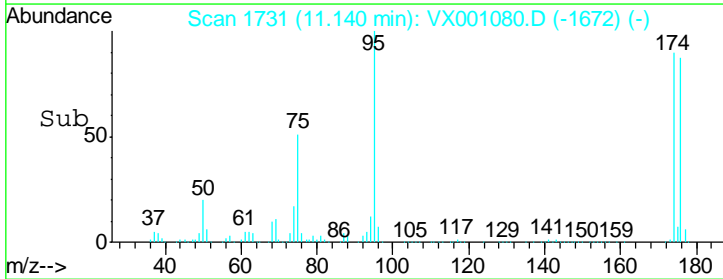
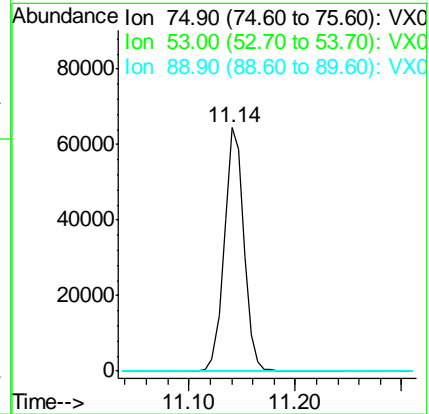
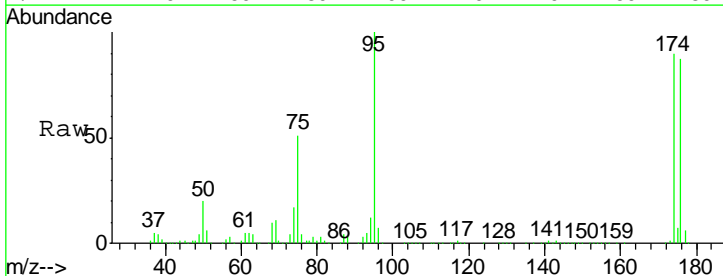
Instrument : MSVOA_X
 ClientSampled : LF012RW163-180411DL

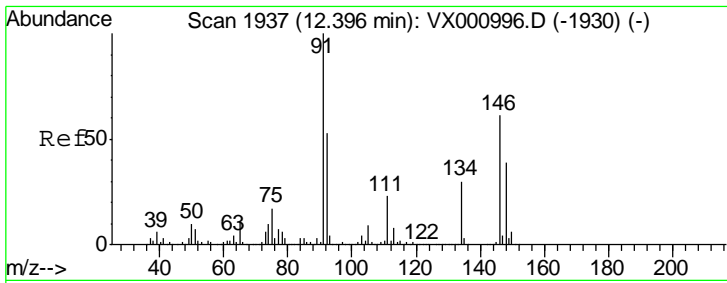
Tgt Ion: 75 Resp: 82466
 Ion Ratio Lower Upper
 75 100
 77 1.1 19.6 58.7#



#81
 trans-1,4-Dichloro-2-butene
 Concen: 94.95 ug/l
 RT: 11.14 min Scan# 1731
 Delta R.T. 0.06 min
 Lab File: VX001080.D
 Acq: 24 Apr 2018 16:46

Tgt Ion: 75 Resp: 82466
 Ion Ratio Lower Upper
 75 100
 53 0.0 83.4 125.2#
 89 0.0 39.7 59.5#

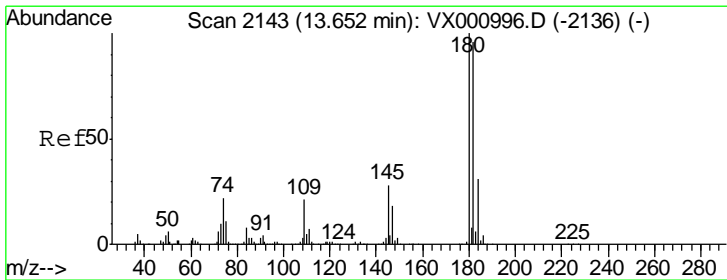
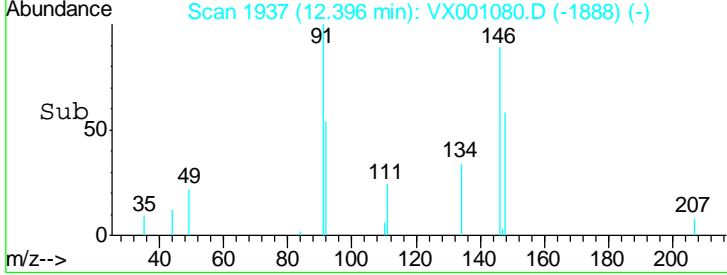
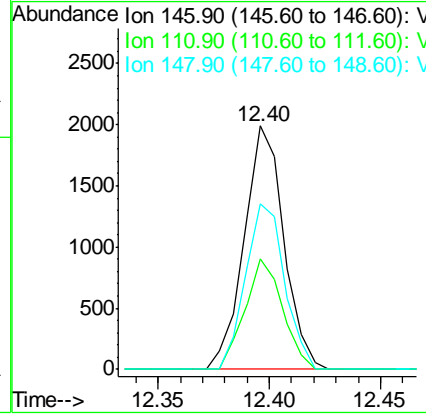
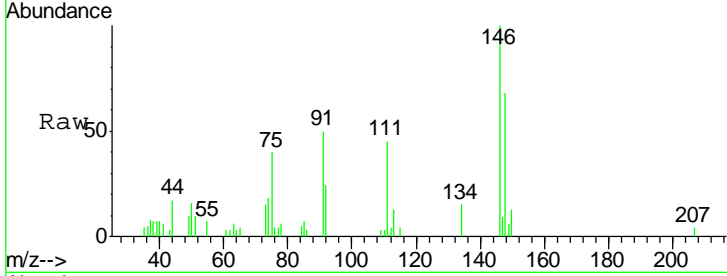




#91
 1,2-Dichlorobenzene
 Concen: 0.48 ug/l
 RT: 12.40 min Scan# 1937
 Delta R.T. 0.00 min
 Lab File: VX001080.D
 Acq: 24 Apr 2018 16:46

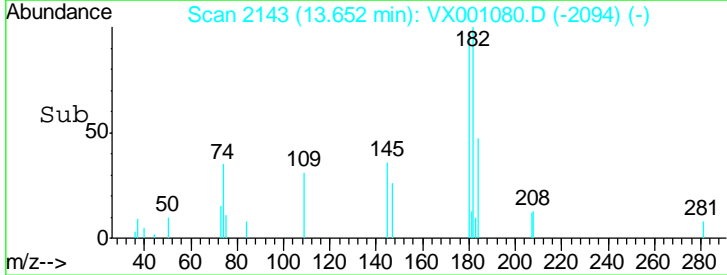
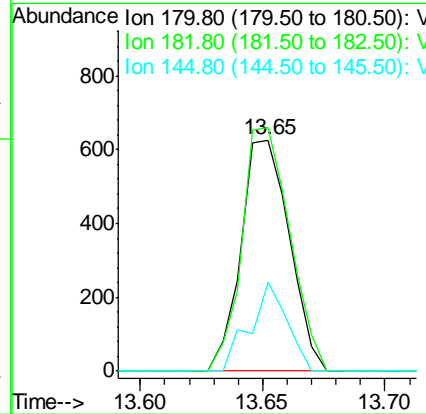
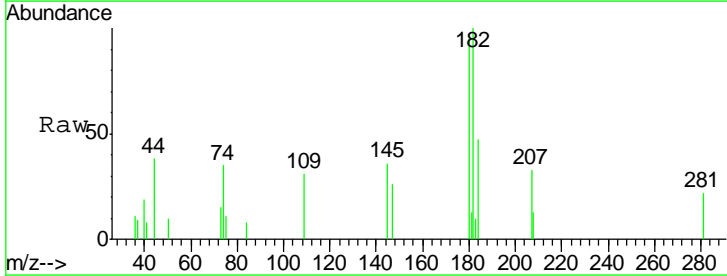
Instrument : MSVOA_X
 ClientSampleID : LF012RW163-180411DL

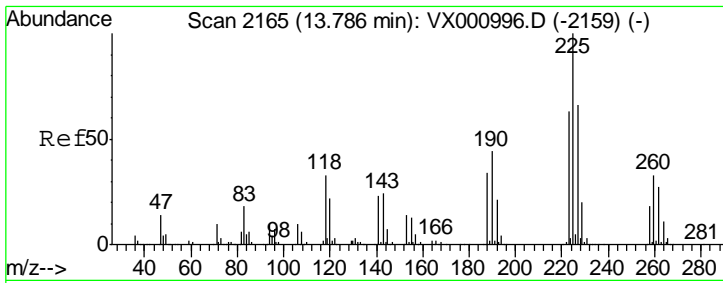
Tgt Ion	Resp	Lower	Upper
146	100		
111	42.9	18.6	56.0
148	66.9	32.3	96.8



#93
 1,2,4-Trichlorobenzene
 Concen: 0.20 ug/l
 RT: 13.65 min Scan# 2143
 Delta R.T. 0.00 min
 Lab File: VX001080.D
 Acq: 24 Apr 2018 16:46

Tgt Ion	Resp	Lower	Upper
180	100		
182	104.4	48.0	144.0
145	29.3	13.9	41.7





#94
 Hexachlorobutadiene
 Concen: 0.26 ug/l
 RT: 13.79 min Scan# 2165
 Delta R.T. 0.00 min
 Lab File: VX001080.D
 Acq: 24 Apr 2018 16:46

Instrument : MSVOA_X
 ClientSampleID : LF012RW163-180411DL

Tgt Ion	Resp	Lower	Upper
225	100		
223	54.6	31.5	94.5
227	51.4	32.6	97.8

