

Data File : VX001084.D

Acq On : 24 Apr 2018 18:28

Operator : JC/MD

Sample : J2377-15

Misc : 5.0mL/MSVOA\_X/WATER

ALS Vial : 10 Sample Multiplier: 1

Instrument :  
MSVOA\_X  
ClientSampleId :  
LF014MW015-180412

Quant Time: Apr 25 07:20:13 2018

Quant Method : W:\HPCHEM1\MSVOA\_X\METHOD\82X041918W.M

Quant Title : SW846 8260

QLast Update : Fri Apr 20 05:03:28 2018

Response via : Initial Calibration

Internal Standards	R.T.	QIon	Response	Conc	Units	Dev(Min)
1) Pentafluorobenzene	5.67	168	230563	50.00	ug/l	0.00
34) 1,4-Difluorobenzene	6.87	114	321318	50.00	ug/l	0.00
63) Chlorobenzene-d5	10.12	117	274516	50.00	ug/l	0.00
72) 1,4-Dichlorobenzene-d4	12.09	152	141642	50.00	ug/l	0.00

## System Monitoring Compounds

33) 1,2-Dichloroethane-d4	6.08	65	164900	56.42	ug/l	0.00
Spiked Amount	50.000		Recovery	=	112.84%	
35) Dibromofluoromethane	5.51	113	126784	51.75	ug/l	0.00
Spiked Amount	50.000		Recovery	=	103.50%	
50) Toluene-d8	8.72	98	478076	52.77	ug/l	0.00
Spiked Amount	50.000		Recovery	=	105.54%	
62) 4-Bromofluorobenzene	11.14	95	158908	41.79	ug/l	0.00
Spiked Amount	50.000		Recovery	=	83.58%	

## Target Compounds

						Qvalue
3) Chloromethane	1.34	50	833	0.31	ug/l	# 75
4) Vinyl Chloride	1.40	62	172144	62.38	ug/l	99
5) Bromomethane	1.64	94	59	Below	Cal	# 2
6) Chloroethane	1.95	64	331	0.20	ug/l	# 43
10) Methyl Iodide	2.51	142	116	7.64	ug/l	# 41
11) Tert butyl alcohol	3.08	59	233	0.53	ug/l	# 13
12) 1,1-Dichloroethene	2.38	96	768	0.34	ug/l	98
13) Acrolein	2.30	56	119	11.76	ug/l	# 14
16) Acetone	2.45	43	3224	2.93	ug/l	99
20) Methylene Chloride	2.87	84	971	Below	Cal	89
25) 2-Butanone	4.72	43	1165	0.68	ug/l	# 89
27) cis-1,2-Dichloroethene	4.61	96	124110	44.55	ug/l	89
29) Tetrahydrofuran	5.20	42	299	0.28	ug/l	# 34
36) 1,1-Dichloropropene	5.67	75	14893	3.94	ug/l	# 49
38) Carbon Tetrachloride	5.68	117	20489	5.36	ug/l	# 15
40) Benzene	6.15	78	8350	0.80	ug/l	91
42) 1,2-Dichloroethane	6.20	62	890	0.22	ug/l	# 76
51) 4-Methyl-2-Pentanone	8.72	43	2581	0.72	ug/l	# 1
52) Toluene	8.79	92	3519	0.51	ug/l	99
65) Chlorobenzene	10.15	112	172431	23.59	ug/l	98
76) 1,2,3-Trichloropropane	11.14	75	80798	32.88	ug/l	# 38
81) trans-1,4-Dichloro-2-buten	11.14	75	80798	97.59	ug/l	# 8
88) 1,4-Dichlorobenzene	12.10	146	13048	2.53	ug/l	86
91) 1,2-Dichlorobenzene	12.40	146	10357	2.13	ug/l	98

(#) = qualifier out of range (m) = manual integration (+) = signals summed

Data File : VX001084.D

Acq On : 24 Apr 2018 18:28

Operator : JC/MD

Sample : J2377-15

Misc : 5.0mL/MSVOA\_X/WATER

ALS Vial : 10 Sample Multiplier: 1

Instrument :  
MSVOA\_X  
Client Sample ID :  
LF014MW015-180412

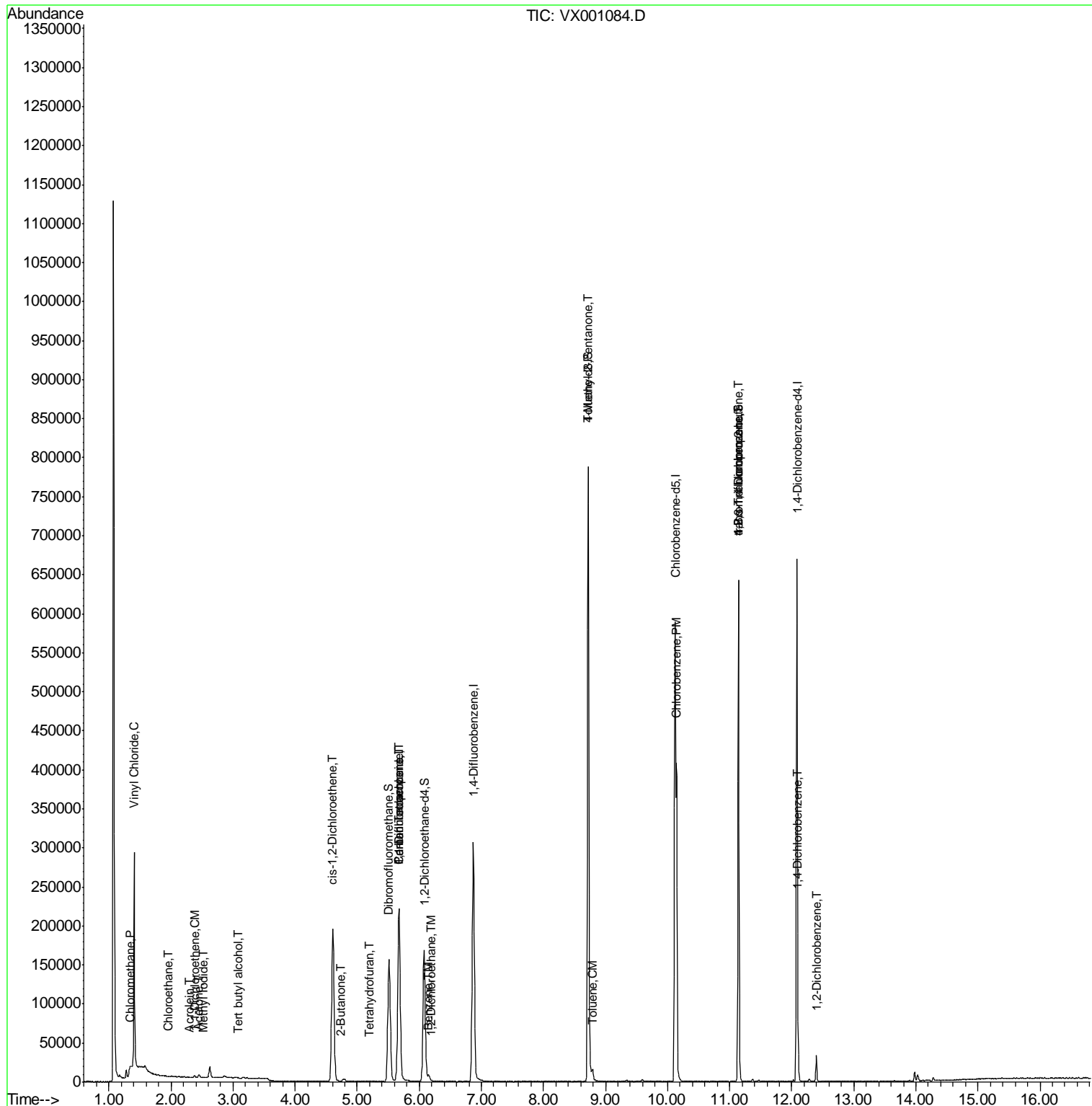
Quant Time: Apr 25 07:20:13 2018

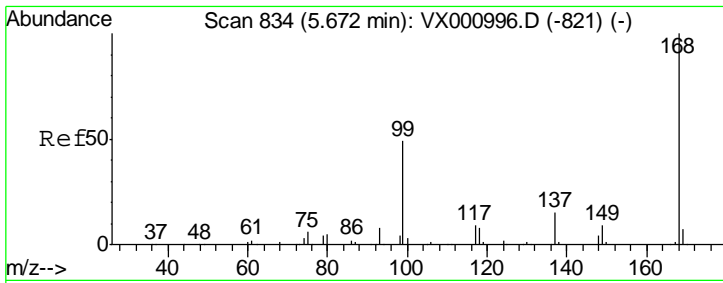
Quant Method : W:\HPCHEM1\MSVOA\_X\METHOD\82X041918W.M

Quant Title : SW846 8260

QLast Update : Fri Apr 20 05:03:28 2018

Response via : Initial Calibration

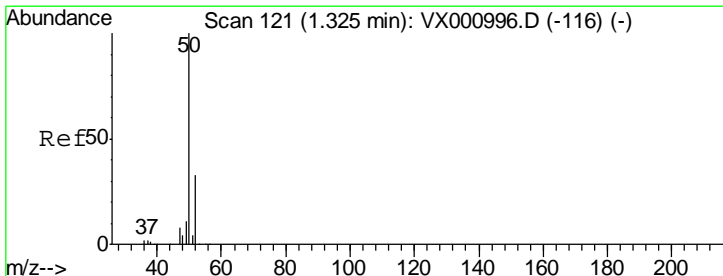
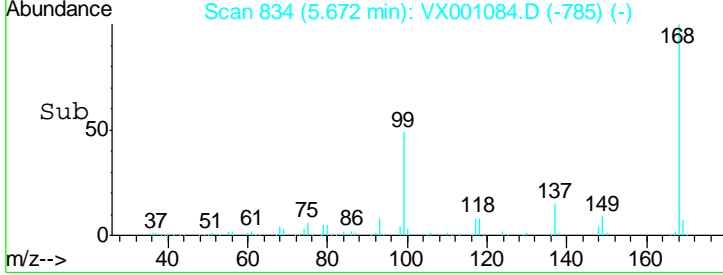
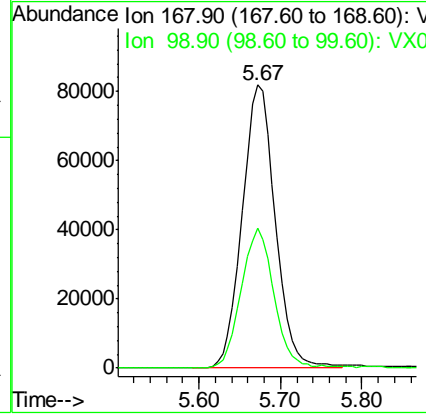
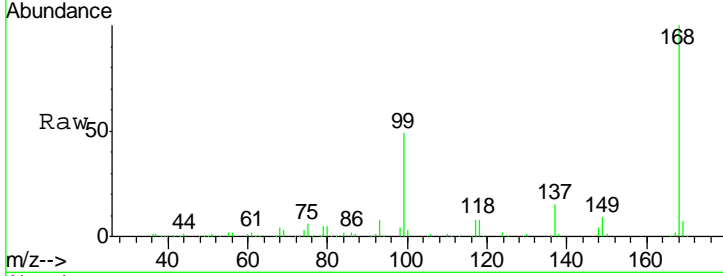




#1  
 Pentafluorobenzene  
 Concen: 50.00 ug/l  
 RT: 5.67 min Scan# 834  
 Delta R.T. 0.00 min  
 Lab File: VX001084.D  
 Acq: 24 Apr 2018 18:28

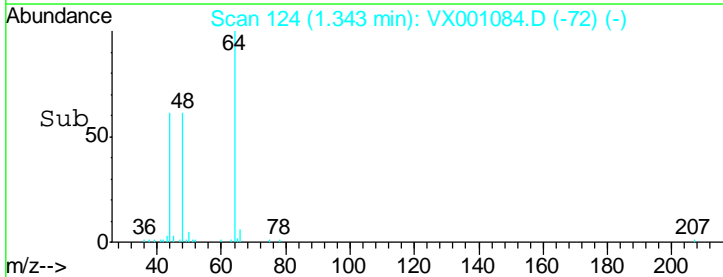
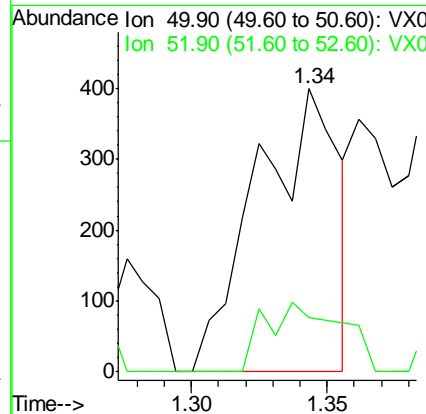
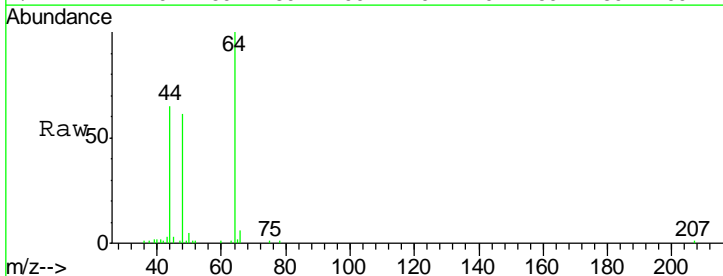
Instrument : MSVOA\_X  
 ClientSampleId : LF014MW015-180412

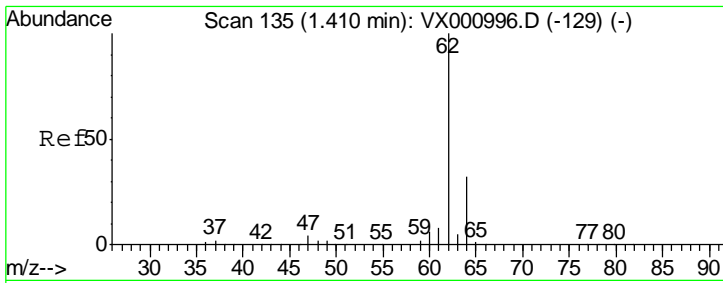
Tgt Ion: 168 Resp: 230563  
 Ion Ratio Lower Upper  
 168 100  
 99 49.4 39.2 58.8



#3  
 Chloromethane  
 Concen: 0.31 ug/l  
 RT: 1.34 min Scan# 124  
 Delta R.T. 0.02 min  
 Lab File: VX001084.D  
 Acq: 24 Apr 2018 18:28

Tgt Ion: 50 Resp: 833  
 Ion Ratio Lower Upper  
 50 100  
 52 19.0 26.3 39.5#

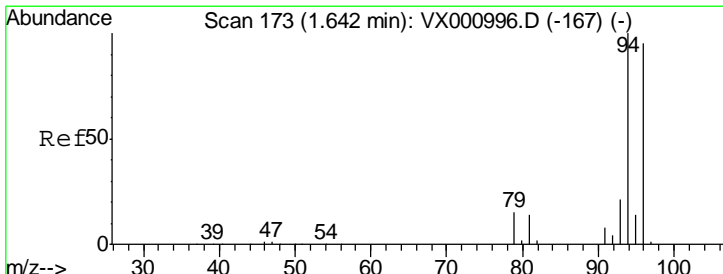
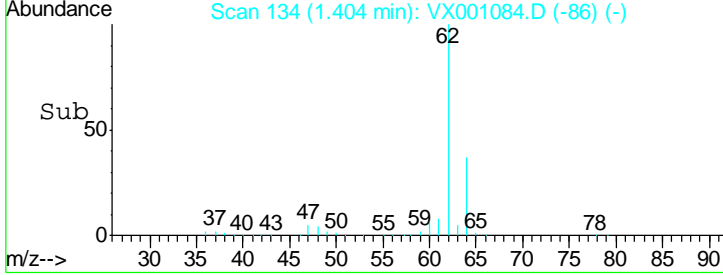
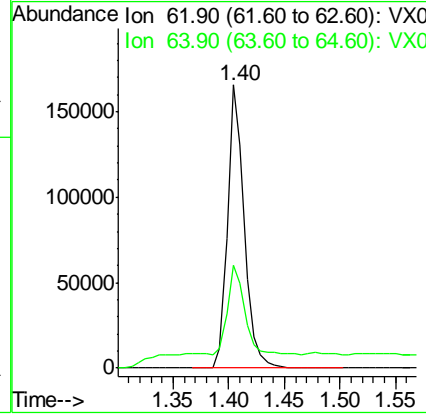
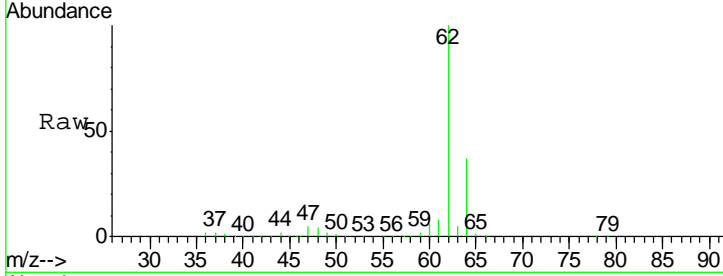




#4  
 Vinyl Chloride  
 Concen: 62.38 ug/l  
 RT: 1.40 min Scan# 134  
 Delta R.T. -0.01 min  
 Lab File: VX001084.D  
 Acq: 24 Apr 2018 18:28

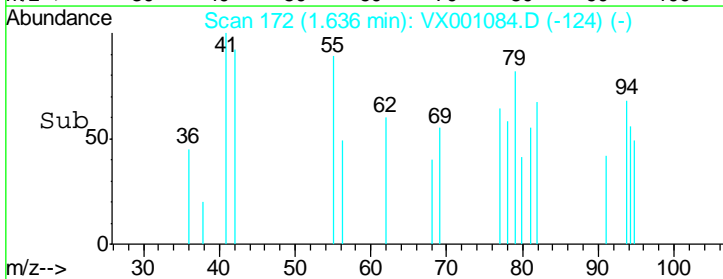
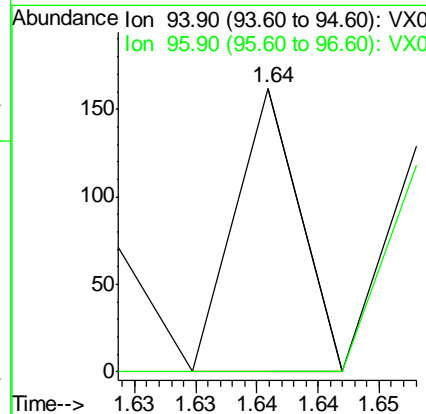
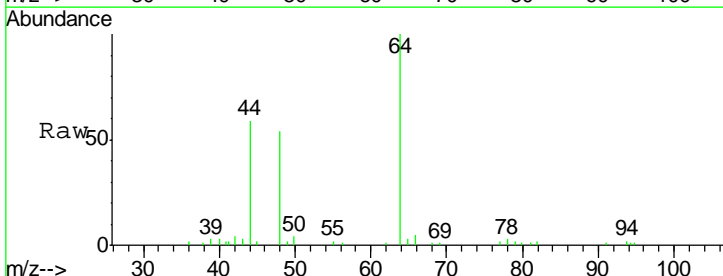
**Instrument :**  
 MSVOA\_X  
**ClientSampled :**  
 LF014MW015-180412

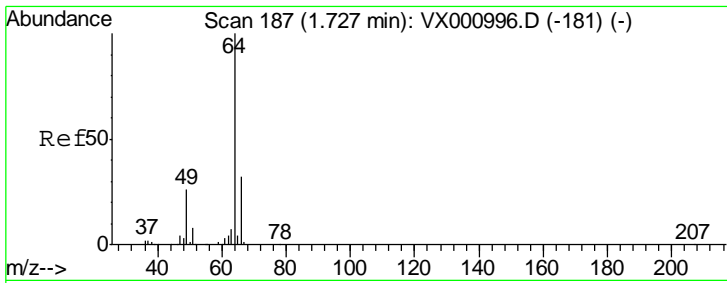
Tgt Ion: 62 Resp: 172144  
 Ion Ratio Lower Upper  
 62 100  
 64 31.7 25.6 38.4



#5  
 Bromomethane  
 Concen: Below Cal  
 RT: 1.64 min Scan# 172  
 Delta R.T. -0.01 min  
 Lab File: VX001084.D  
 Acq: 24 Apr 2018 18:28

Tgt Ion: 94 Resp: 59  
 Ion Ratio Lower Upper  
 94 100  
 96 0.0 76.0 114.0#

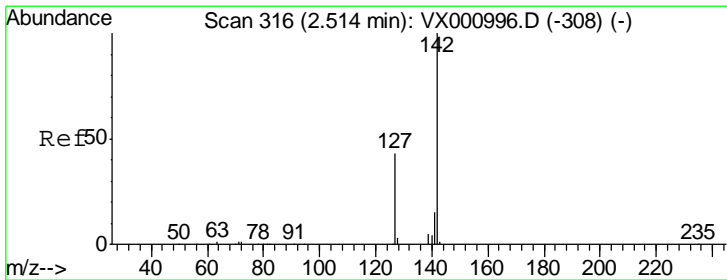
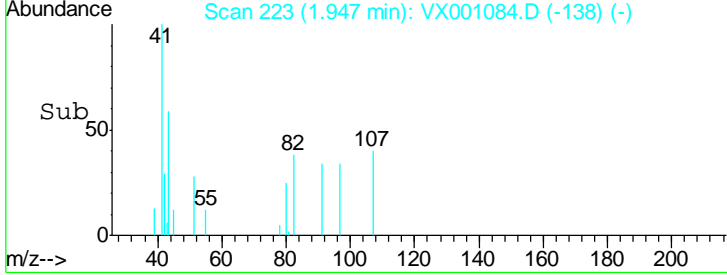
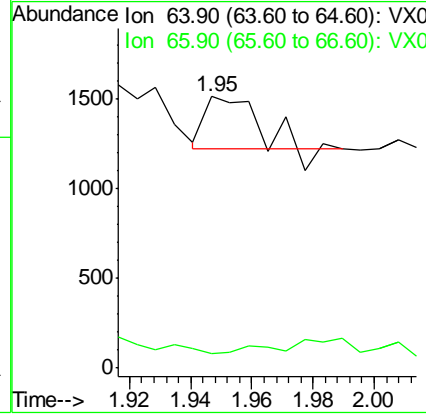
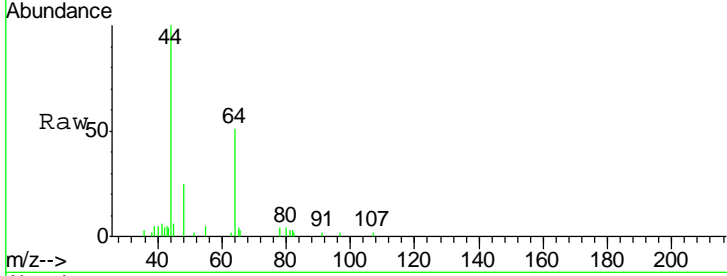




#6  
 Chloroethane  
 Concen: 0.20 ug/l  
 RT: 1.95 min Scan# 223  
 Delta R.T. 0.22 min  
 Lab File: VX001084.D  
 Acq: 24 Apr 2018 18:28

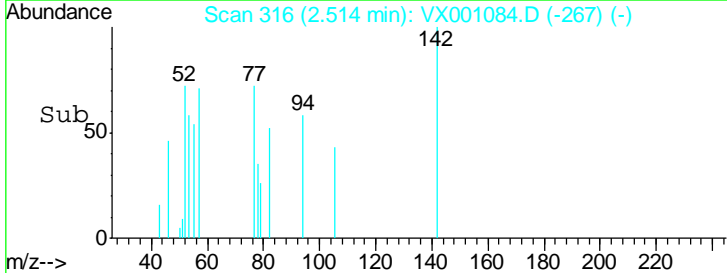
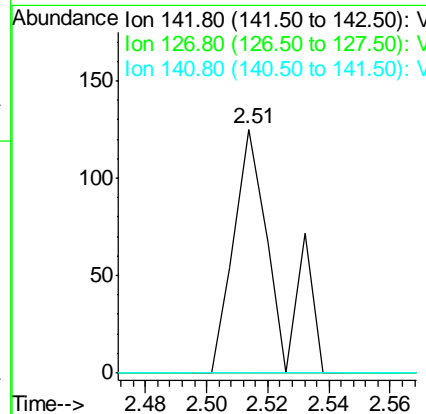
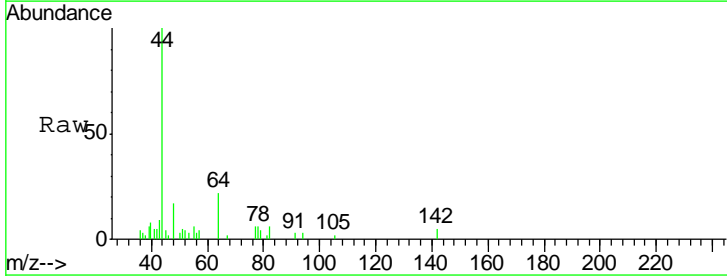
Instrument :  
 MSVOA\_X  
 ClientSampled :  
 LF014MW015-180412

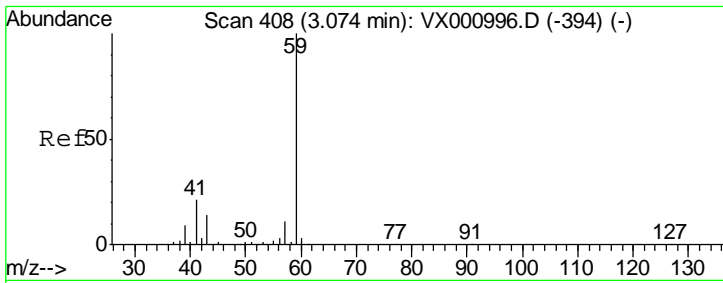
Tgt Ion: 64 Resp: 331  
 Ion Ratio Lower Upper  
 64 100  
 66 0.0 25.3 37.9#



#10  
 Methyl Iodide  
 Concen: 7.64 ug/l  
 RT: 2.51 min Scan# 316  
 Delta R.T. 0.00 min  
 Lab File: VX001084.D  
 Acq: 24 Apr 2018 18:28

Tgt Ion: 142 Resp: 116  
 Ion Ratio Lower Upper  
 142 100  
 127 0.0 34.0 51.0#  
 141 0.0 11.4 17.2#

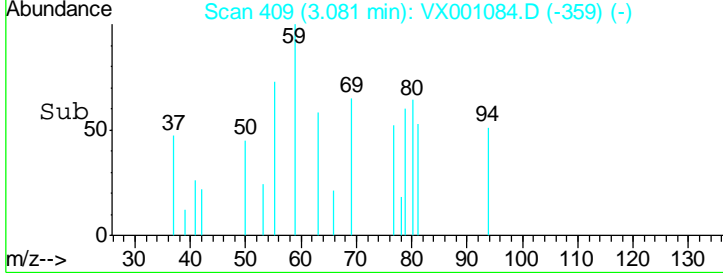
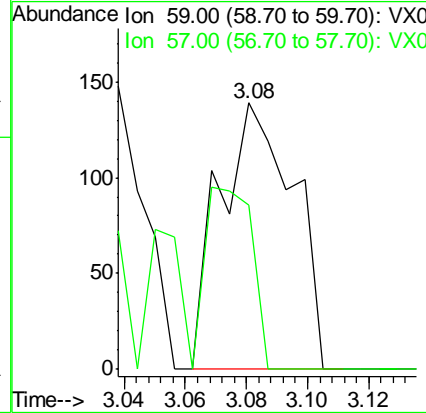
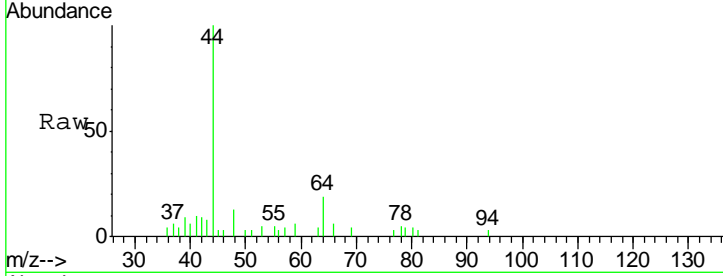




#11  
 Tert butyl alcohol  
 Concen: 0.53 ug/l  
 RT: 3.08 min Scan# 409  
 Delta R.T. 0.01 min  
 Lab File: VX001084.D  
 Acq: 24 Apr 2018 18:28

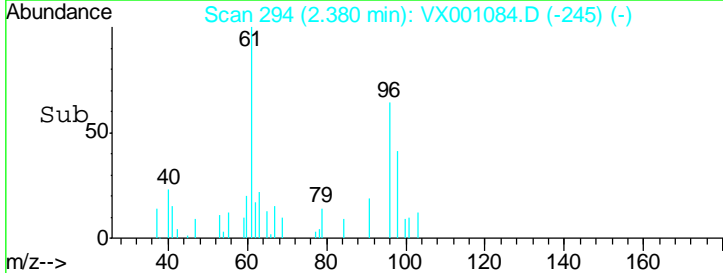
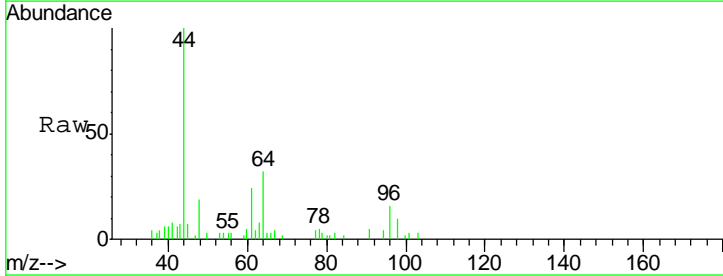
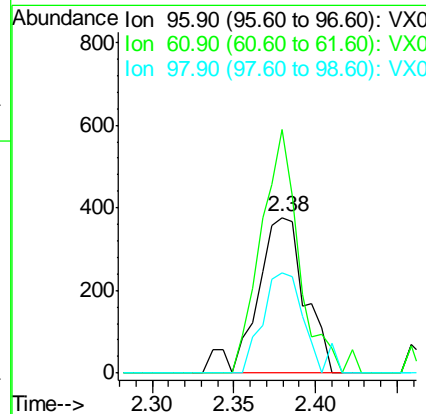
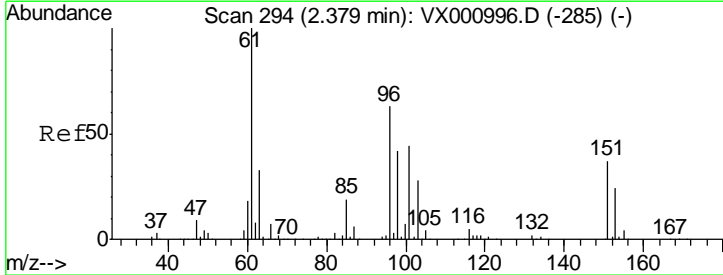
Instrument : MSVOA\_X  
 ClientSampled : LF014MW015-180412

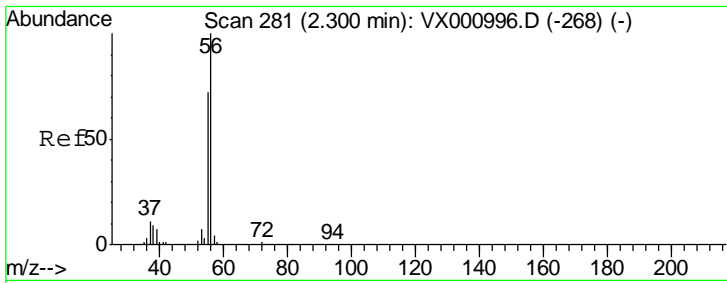
Tgt Ion	Resp	Lower	Upper
59	100		
57	42.9	8.3	12.5#



#12  
 1,1-Dichloroethene  
 Concen: 0.34 ug/l  
 RT: 2.38 min Scan# 294  
 Delta R.T. 0.00 min  
 Lab File: VX001084.D  
 Acq: 24 Apr 2018 18:28

Tgt Ion	Resp	Lower	Upper
96	100		
61	156.2	126.4	189.6
98	64.2	52.6	78.8

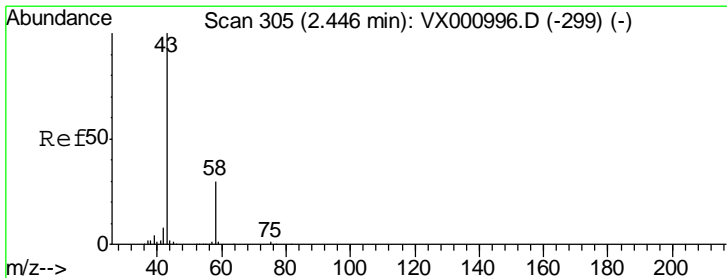
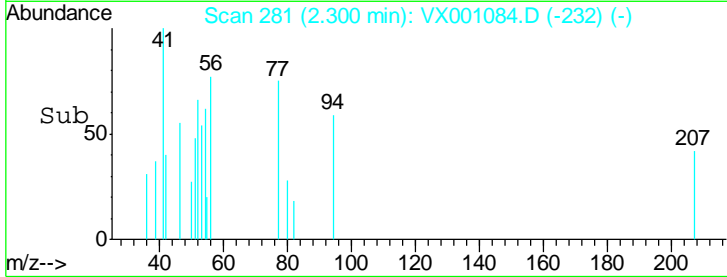
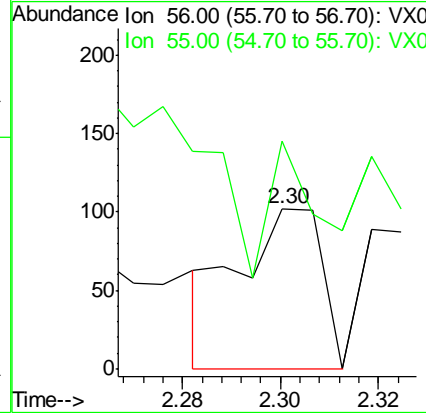
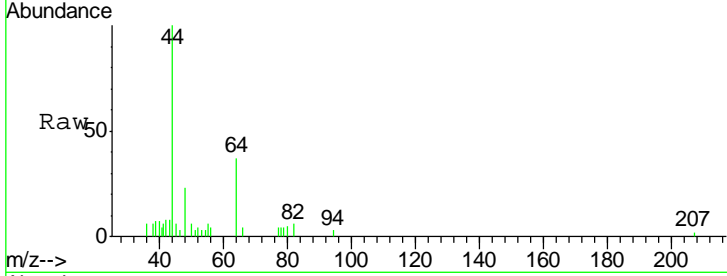




#13  
 Acrolein  
 Concen: 11.76 ug/l  
 RT: 2.30 min Scan# 281  
 Delta R.T. 0.00 min  
 Lab File: VX001084.D  
 Acq: 24 Apr 2018 18:28

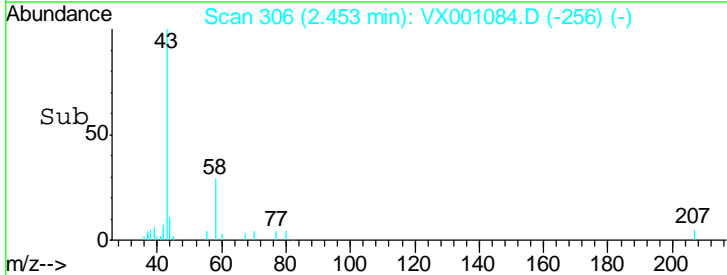
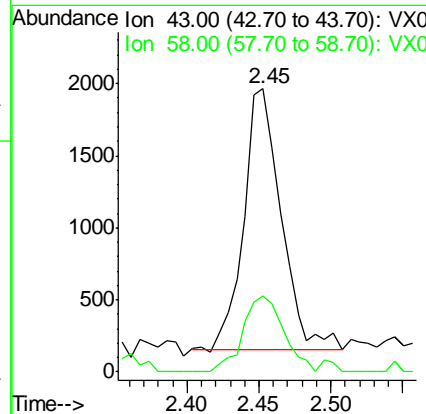
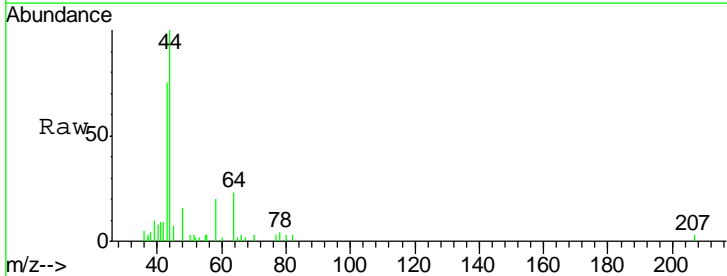
Instrument :  
 MSVOA\_X  
 ClientSampled :  
 LF014MW015-180412

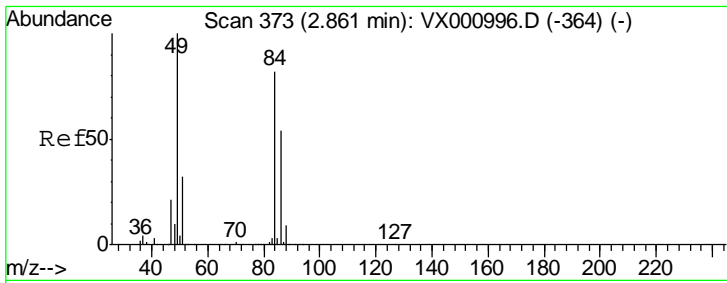
Tgt Ion: 56 Resp: 119  
 Ion Ratio Lower Upper  
 56 100  
 55 0.0 57.4 86.2#



#16  
 Acetone  
 Concen: 2.93 ug/l  
 RT: 2.45 min Scan# 306  
 Delta R.T. 0.01 min  
 Lab File: VX001084.D  
 Acq: 24 Apr 2018 18:28

Tgt Ion: 43 Resp: 3224  
 Ion Ratio Lower Upper  
 43 100  
 58 29.3 23.7 35.5

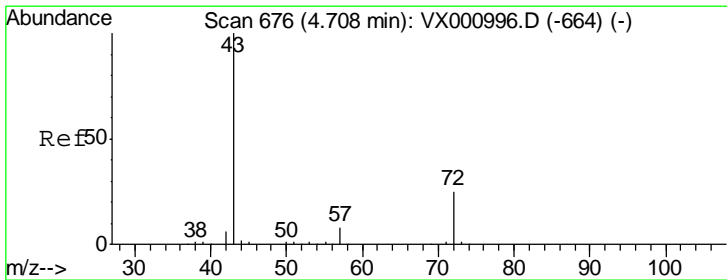
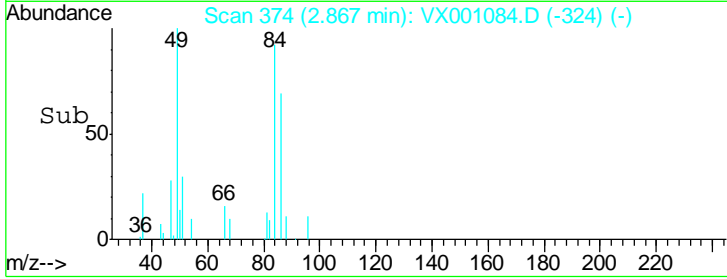
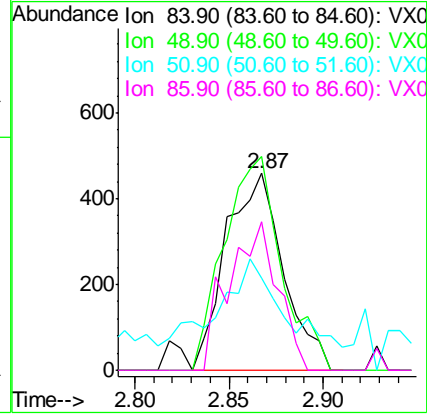
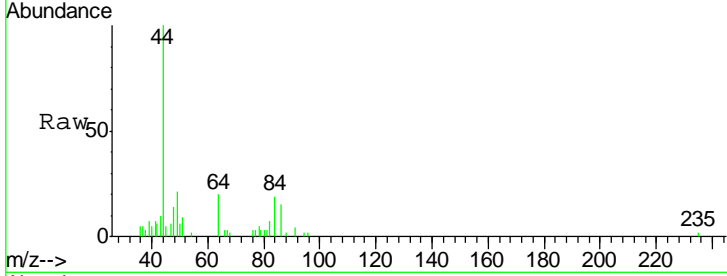




#20  
 Methylene Chloride  
 Concen: Below Cal  
 RT: 2.87 min Scan# 374  
 Delta R.T. 0.01 min  
 Lab File: VX001084.D  
 Acq: 24 Apr 2018 18:28

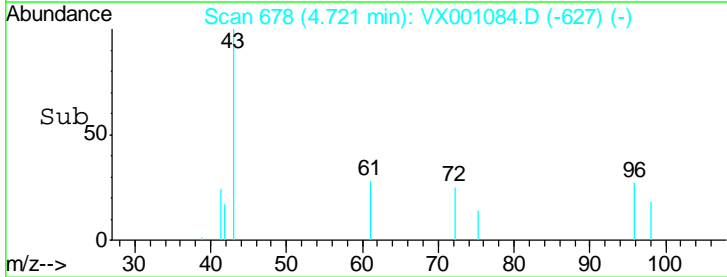
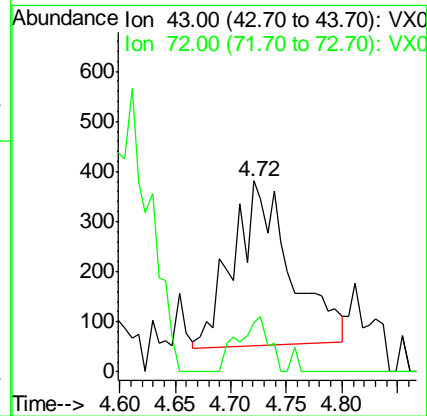
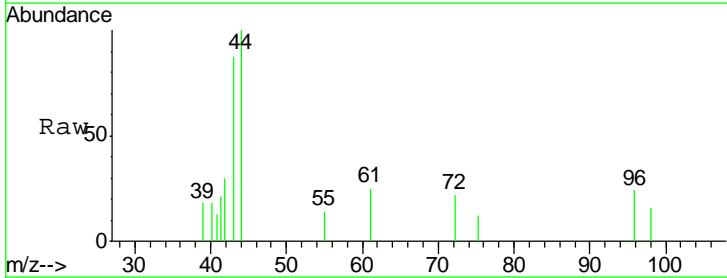
**Instrument :**  
 MSVOA\_X  
**ClientSampled :**  
 LF014MW015-180412

Tgt Ion	Resp	Lower	Upper
84	100		
49	108.5	97.1	145.7
51	34.9	30.8	46.2
86	75.4	52.3	78.5

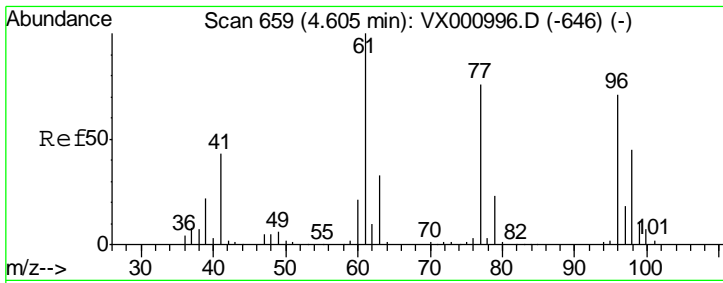


#25  
 2-Butanone  
 Concen: 0.68 ug/l  
 RT: 4.72 min Scan# 678  
 Delta R.T. 0.01 min  
 Lab File: VX001084.D  
 Acq: 24 Apr 2018 18:28

Tgt Ion	Resp	Lower	Upper
43	100		
72	30.3	19.9	29.9#



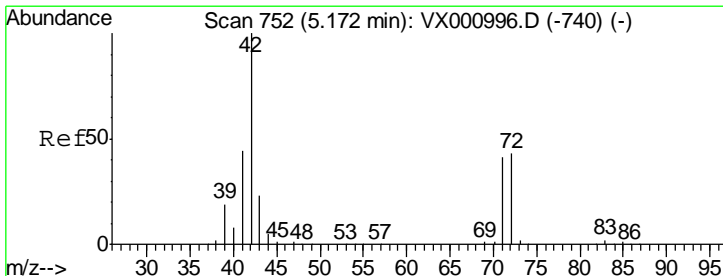
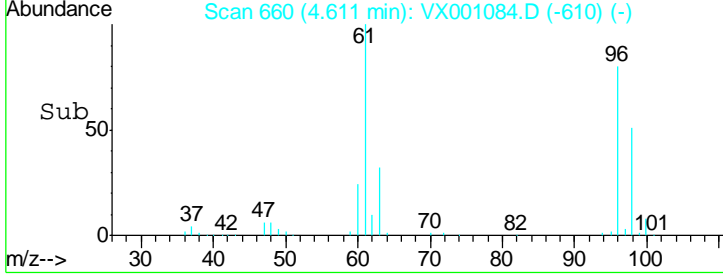
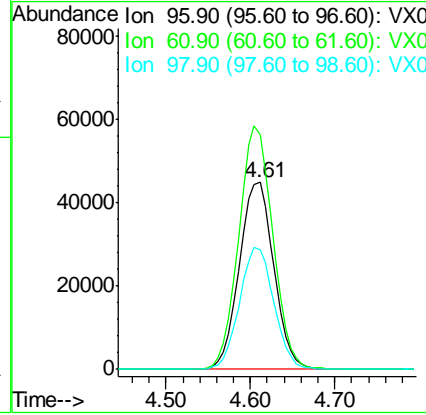
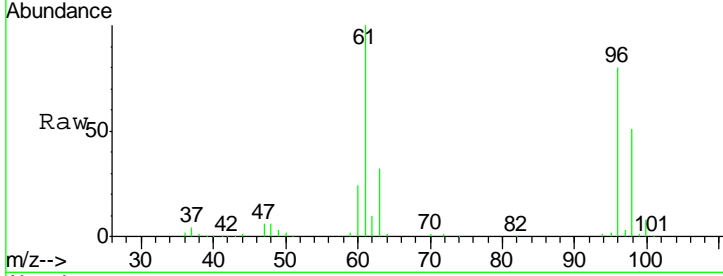




#27  
 cis-1,2-Dichloroethene  
 Concen: 44.55 ug/l  
 RT: 4.61 min Scan# 660  
 Delta R.T. 0.01 min  
 Lab File: VX001084.D  
 Acq: 24 Apr 2018 18:28

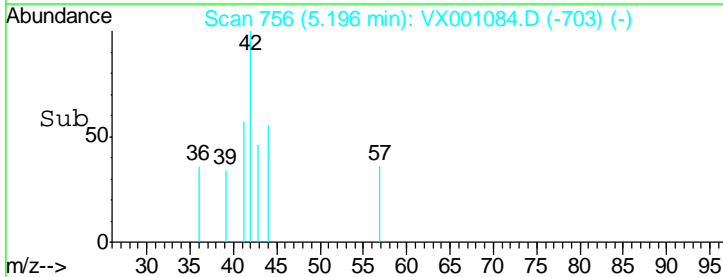
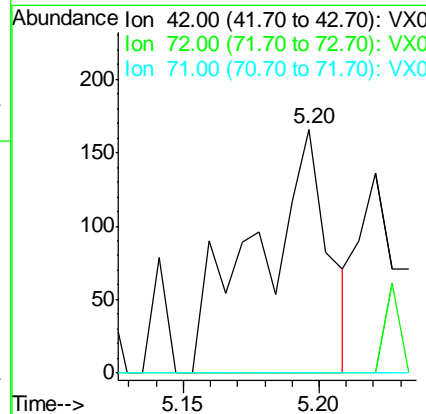
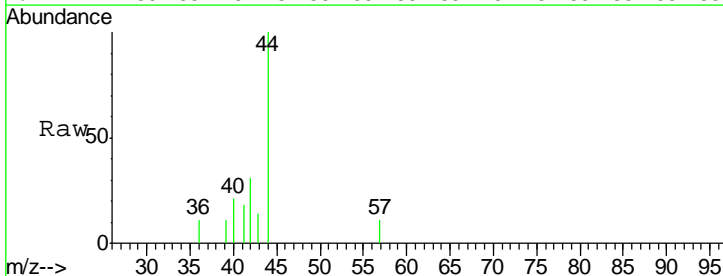
**Instrument :**  
 MSVOA\_X  
**ClientSampleId :**  
 LF014MW015-180412

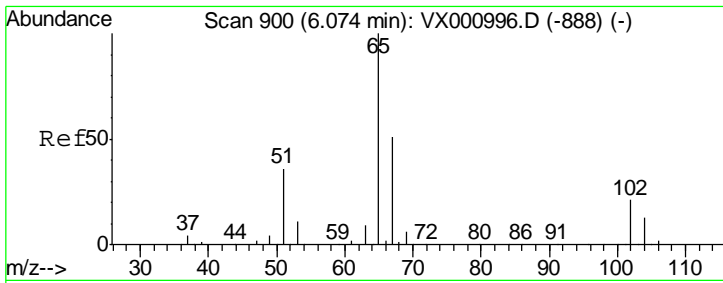
Tgt Ion	Resp	Lower	Upper
96	124110		
61	128.6	0.0	297.0
98	65.0	0.0	130.0



#29  
 Tetrahydrofuran  
 Concen: 0.28 ug/l  
 RT: 5.20 min Scan# 756  
 Delta R.T. 0.02 min  
 Lab File: VX001084.D  
 Acq: 24 Apr 2018 18:28

Tgt Ion	Resp	Lower	Upper
42	299		
72	0.0	34.6	52.0#
71	0.0	32.6	49.0#

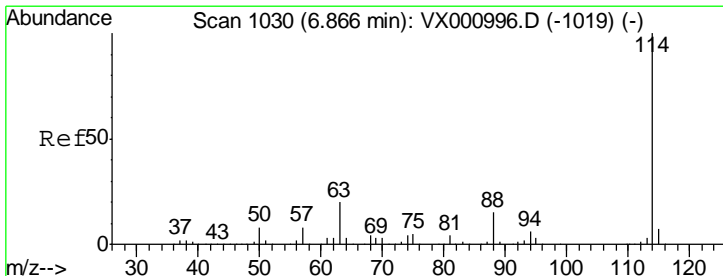
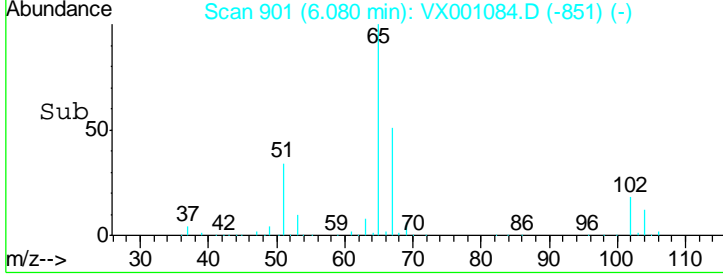
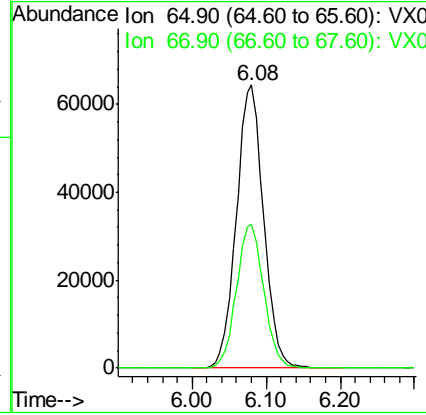
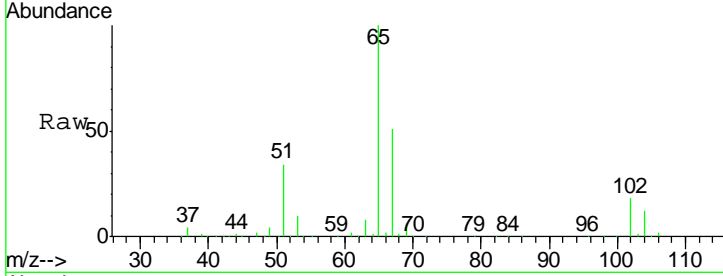




#33  
 1,2-Dichloroethane-d4  
 Concen: 56.42 ug/l  
 RT: 6.08 min Scan# 901  
 Delta R.T. 0.01 min  
 Lab File: VX001084.D  
 Acq: 24 Apr 2018 18:28

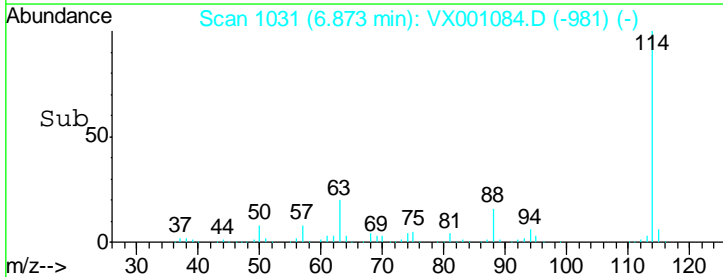
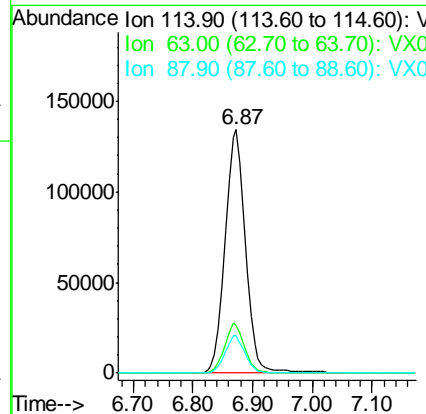
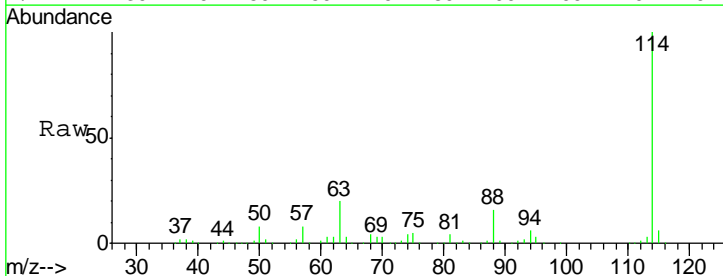
Instrument : MSVOA\_X  
 ClientSampled : LF014MW015-180412

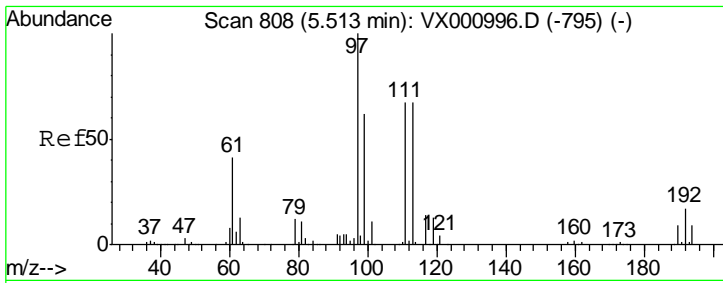
Tgt Ion: 65 Resp: 164900  
 Ion Ratio Lower Upper  
 65 100  
 67 51.1 0.0 102.6



#34  
 1,4-Difluorobenzene  
 Concen: 50.00 ug/l  
 RT: 6.87 min Scan# 1031  
 Delta R.T. 0.01 min  
 Lab File: VX001084.D  
 Acq: 24 Apr 2018 18:28

Tgt Ion: 114 Resp: 321318  
 Ion Ratio Lower Upper  
 114 100  
 63 19.6 0.0 39.4  
 88 15.6 0.0 29.8

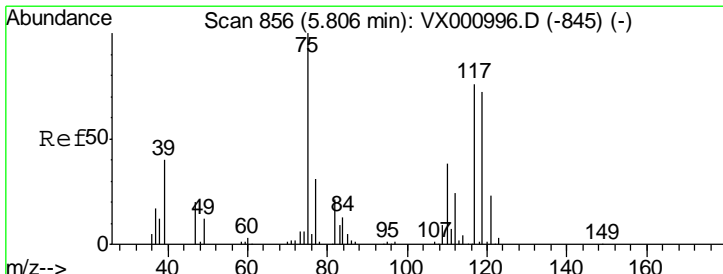
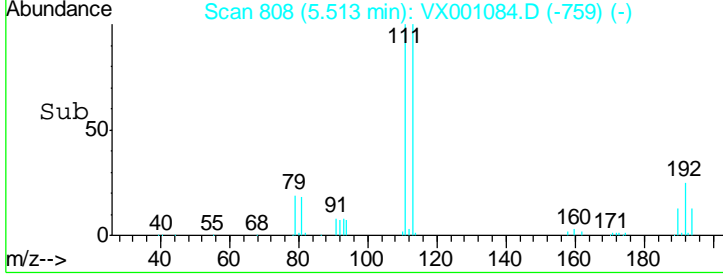
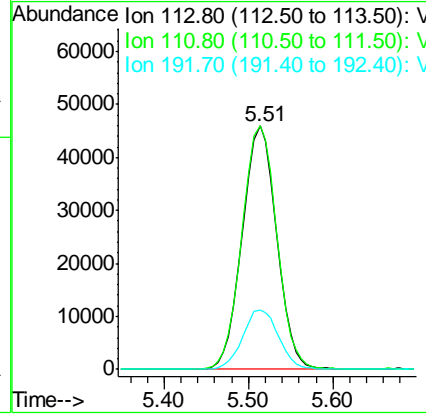
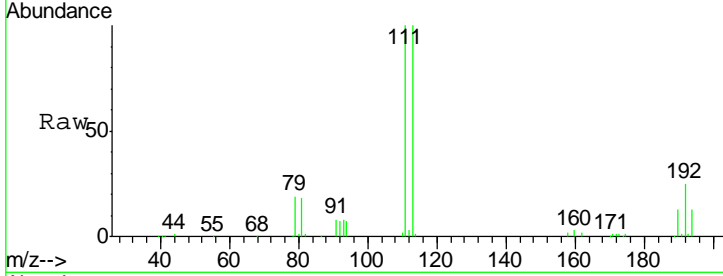




#35  
 Dibromofluoromethane  
 Concen: 51.75 ug/l  
 RT: 5.51 min Scan# 808  
 Delta R.T. 0.00 min  
 Lab File: VX001084.D  
 Acq: 24 Apr 2018 18:28

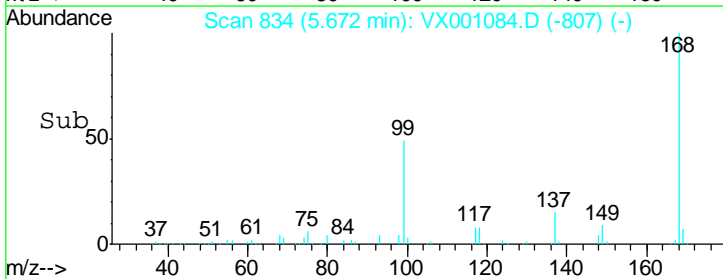
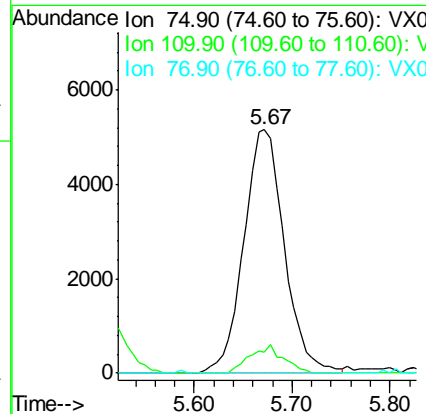
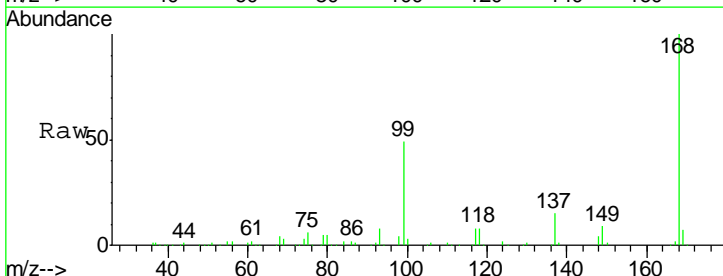
Instrument : MSVOA\_X  
 ClientSampleId : LF014MW015-180412

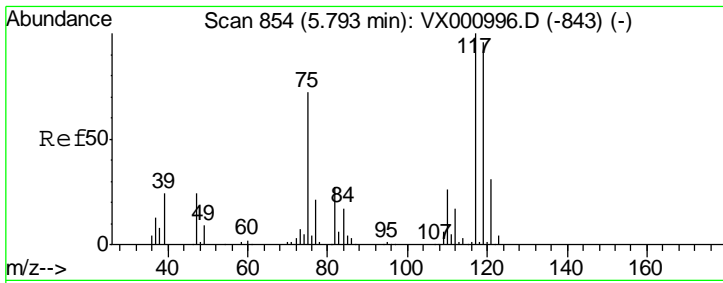
Tgt Ion	Resp	Lower	Upper
113	126784		
111	101.8	81.4	122.2
192	25.5	20.4	30.6



#36  
 1,1-Dichloropropene  
 Concen: 3.94 ug/l  
 RT: 5.67 min Scan# 834  
 Delta R.T. -0.13 min  
 Lab File: VX001084.D  
 Acq: 24 Apr 2018 18:28

Tgt Ion	Resp	Lower	Upper
75	14893		
110	9.4	18.7	56.1#
77	0.0	25.0	37.4#

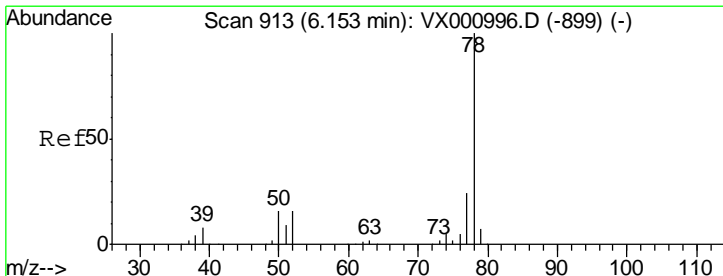
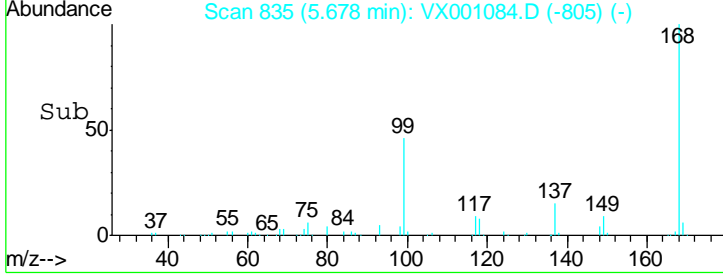
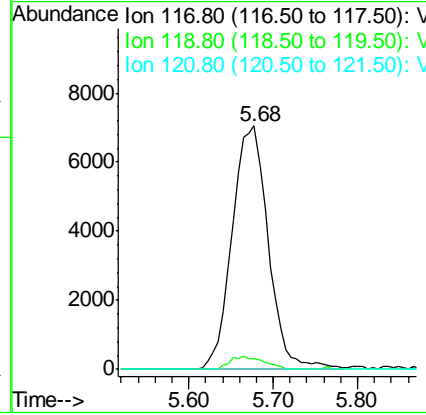
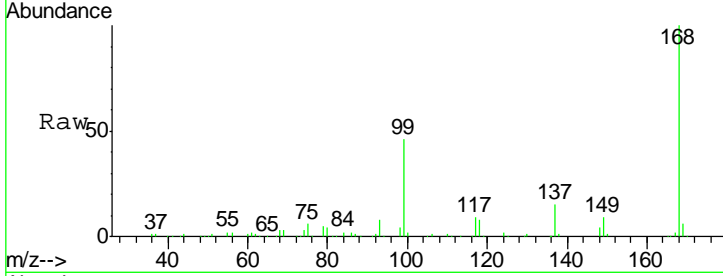




#38  
 Carbon Tetrachloride  
 Concen: 5.36 ug/l  
 RT: 5.68 min Scan# 835  
 Delta R.T. -0.12 min  
 Lab File: VX001084.D  
 Acq: 24 Apr 2018 18:28

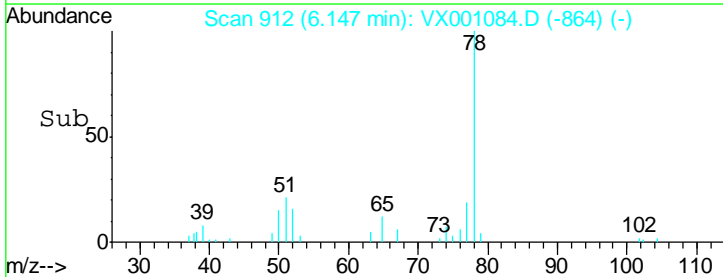
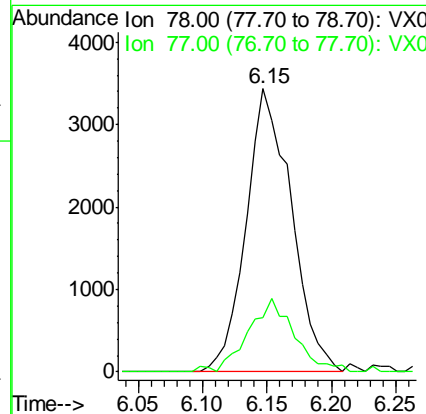
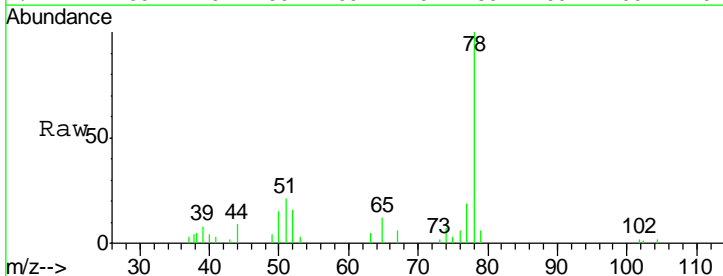
**Instrument :**  
 MSVOA\_X  
**ClientSampled :**  
 LF014MW015-180412

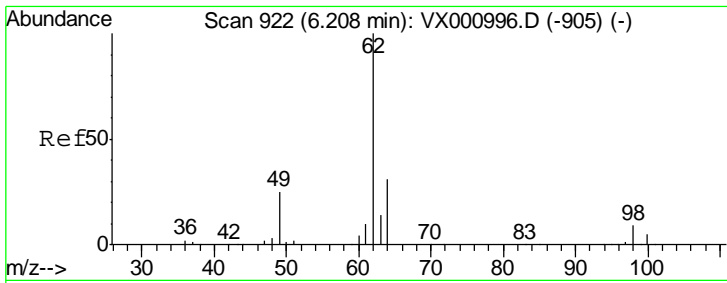
Tgt Ion	Resp	Lower	Upper
117	20489		
119	4.3	76.5	114.7#
121	0.0	24.5	36.7#



#40  
 Benzene  
 Concen: 0.80 ug/l  
 RT: 6.15 min Scan# 912  
 Delta R.T. -0.01 min  
 Lab File: VX001084.D  
 Acq: 24 Apr 2018 18:28

Tgt Ion	Resp	Lower	Upper
78	8350		
77	19.1	18.9	28.3

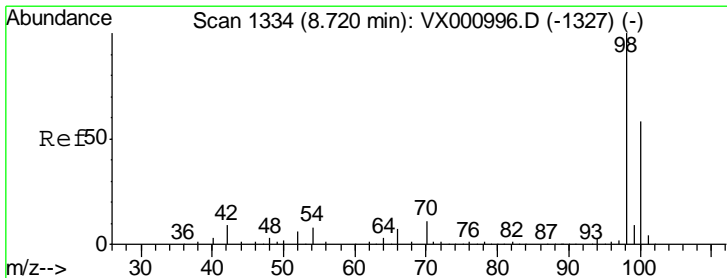
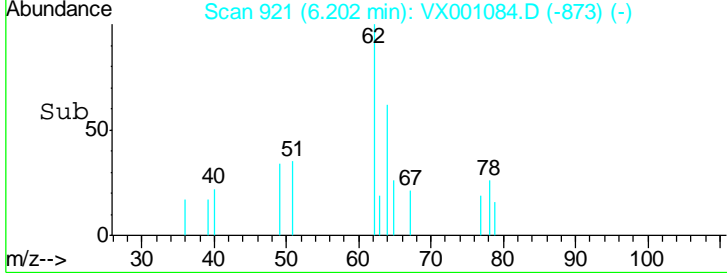
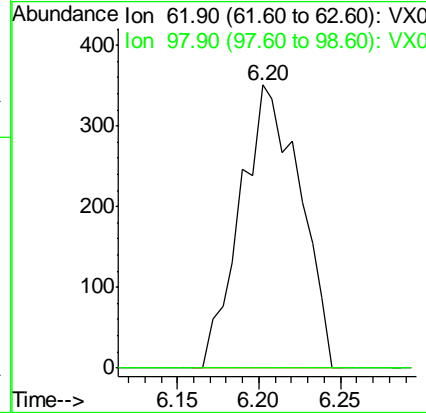
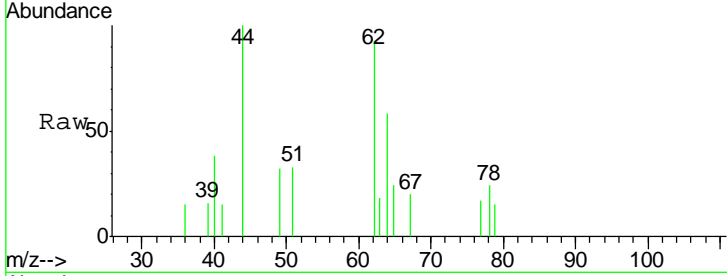




#42  
 1,2-Dichloroethane  
 Concen: 0.22 ug/l  
 RT: 6.20 min Scan# 921  
 Delta R.T. -0.01 min  
 Lab File: VX001084.D  
 Acq: 24 Apr 2018 18:28

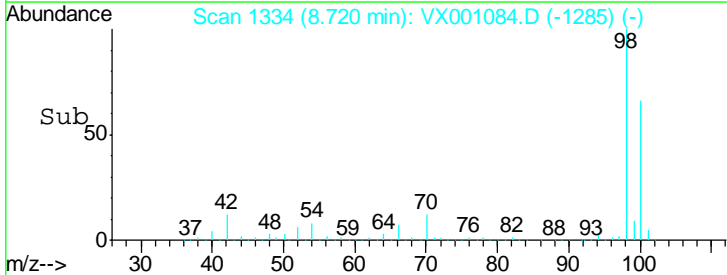
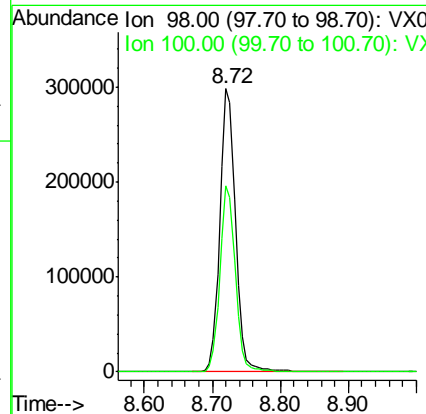
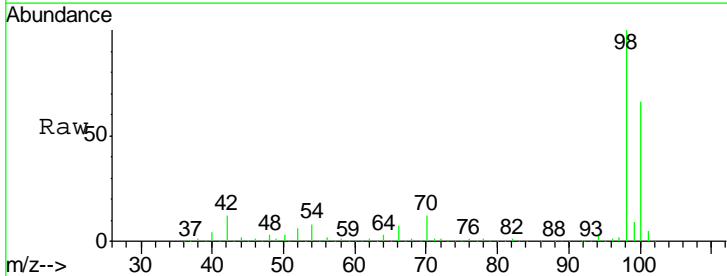
**Instrument :**  
 MSVOA\_X  
**ClientSampled :**  
 LF014MW015-180412

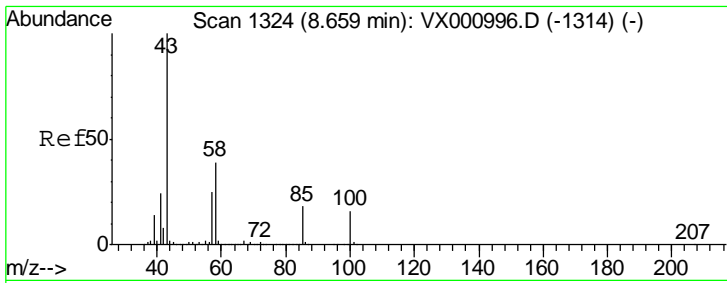
Tgt Ion	Resp	Lower	Upper
62	100	0.0	17.6
98	0.0	0.0	17.6



#50  
 Toluene-d8  
 Concen: 52.77 ug/l  
 RT: 8.72 min Scan# 1334  
 Delta R.T. 0.00 min  
 Lab File: VX001084.D  
 Acq: 24 Apr 2018 18:28

Tgt Ion	Resp	Lower	Upper
98	100	64.9	77.9
100	64.9	51.9	77.9

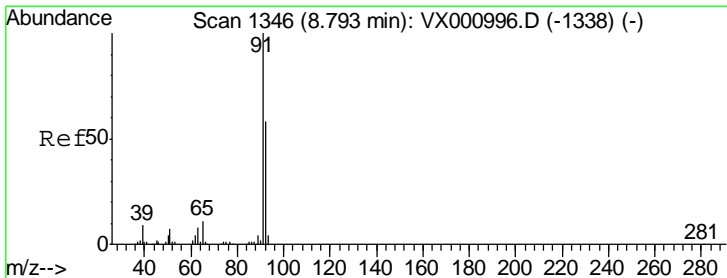
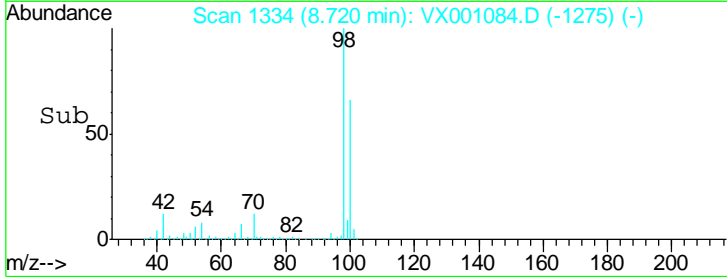
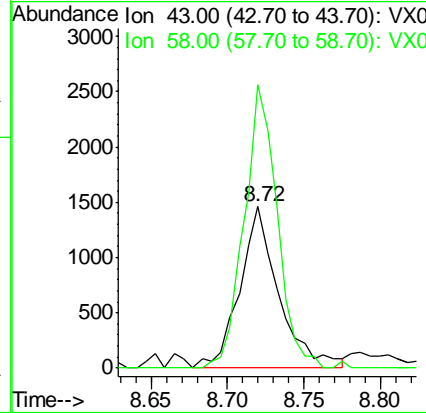
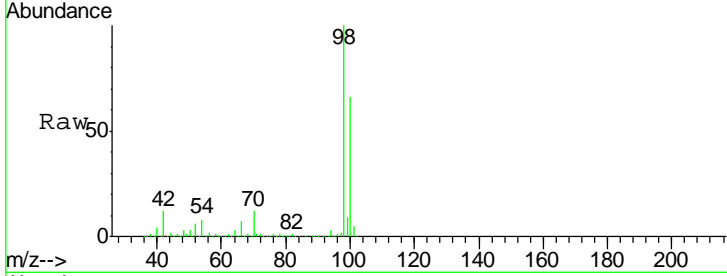




#51  
 4-Methyl-2-Pentanone  
 Concen: 0.72 ug/l  
 RT: 8.72 min Scan# 1334  
 Delta R.T. 0.06 min  
 Lab File: VX001084.D  
 Acq: 24 Apr 2018 18:28

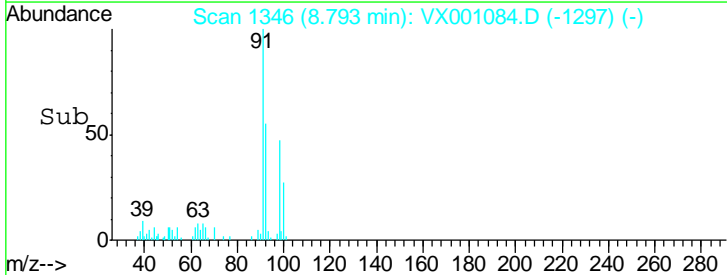
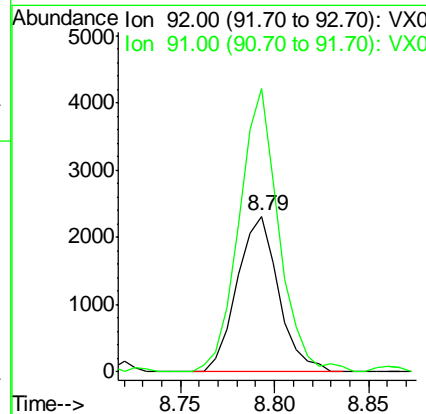
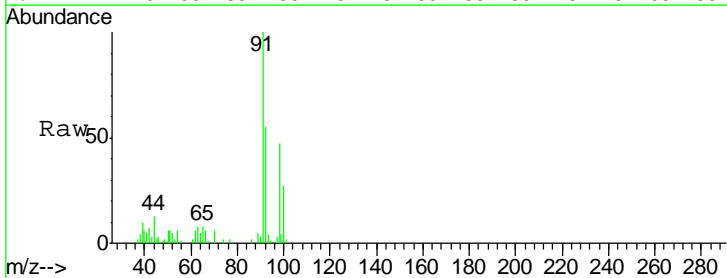
Instrument : MSVOA\_X  
 ClientSampleId : LF014MW015-180412

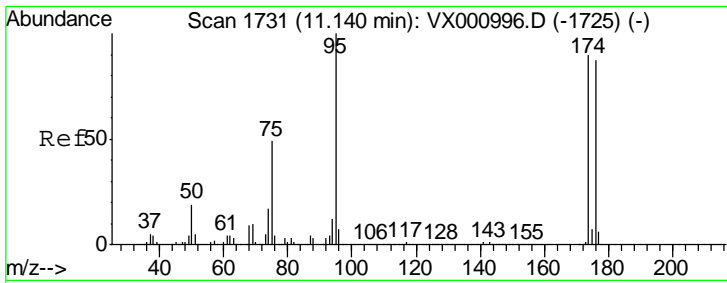
Tgt Ion: 43 Resp: 2581  
 Ion Ratio Lower Upper  
 43 100  
 58 148.5 30.2 45.4#



#52  
 Toluene  
 Concen: 0.51 ug/l  
 RT: 8.79 min Scan# 1346  
 Delta R.T. 0.00 min  
 Lab File: VX001084.D  
 Acq: 24 Apr 2018 18:28

Tgt Ion: 92 Resp: 3519  
 Ion Ratio Lower Upper  
 92 100  
 91 174.3 138.2 207.4

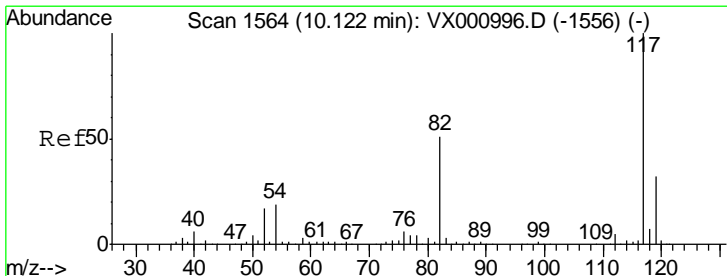
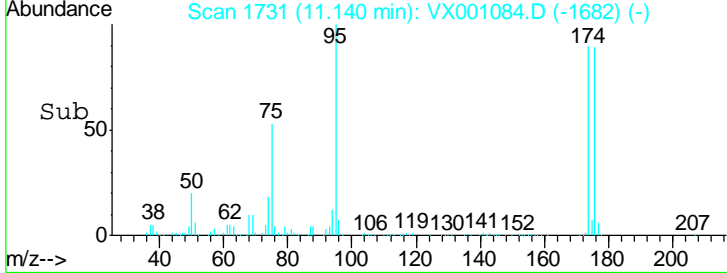
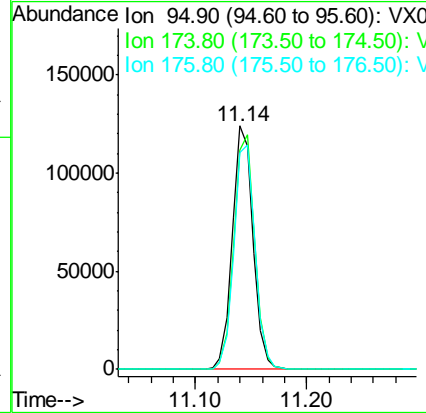
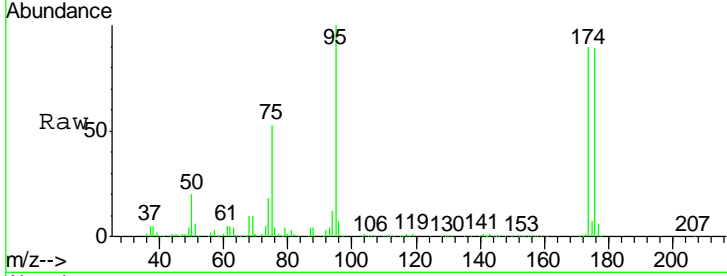




#62  
 4-Bromofluorobenzene  
 Concen: 41.79 ug/l  
 RT: 11.14 min Scan# 1731  
 Delta R.T. 0.00 min  
 Lab File: VX001084.D  
 Acq: 24 Apr 2018 18:28

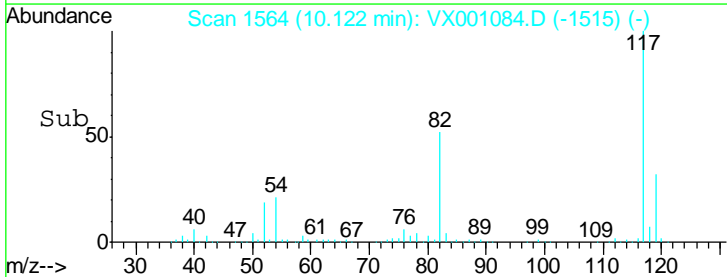
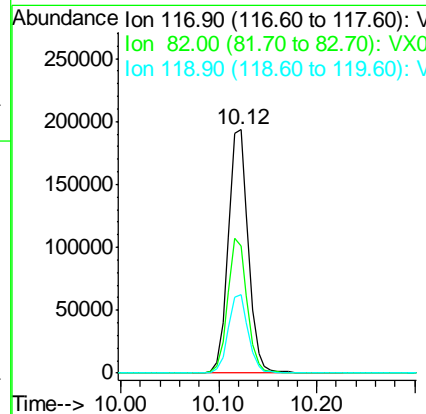
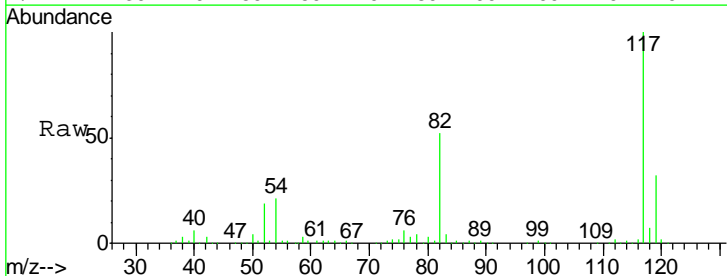
Instrument : MSVOA\_X  
 ClientSampled : LF014MW015-180412

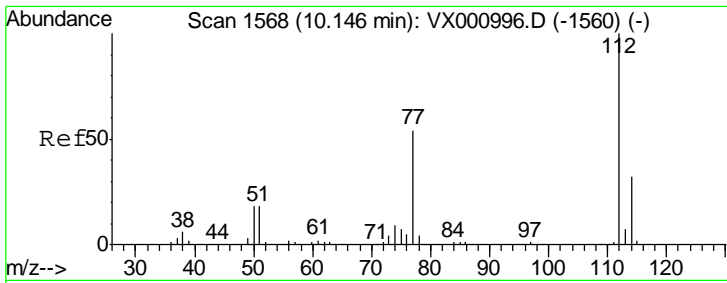
Tgt Ion	Resp	Lower	Upper
95	158908		
174	97.5	0.0	198.4
176	94.6	0.0	192.0



#63  
 Chlorobenzene-d5  
 Concen: 50.00 ug/l  
 RT: 10.12 min Scan# 1564  
 Delta R.T. 0.00 min  
 Lab File: VX001084.D  
 Acq: 24 Apr 2018 18:28

Tgt Ion	Resp	Lower	Upper
117	274516		
82	52.2	40.6	60.8
119	32.0	26.0	39.0



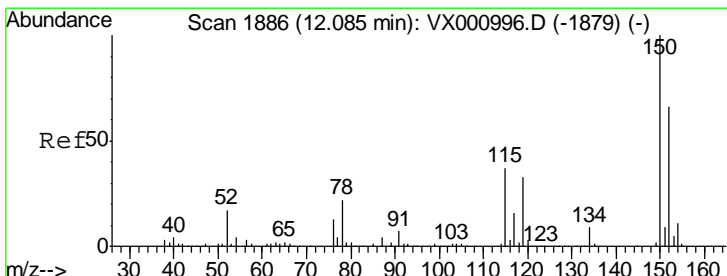
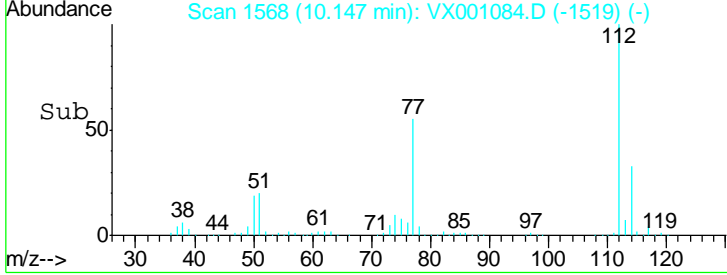
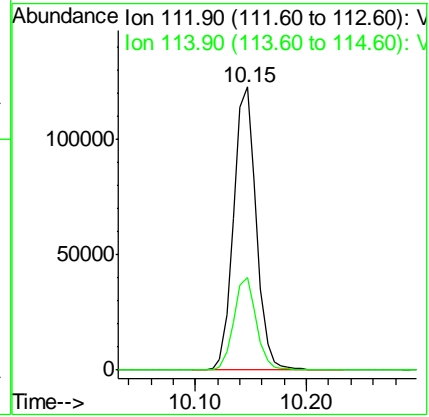
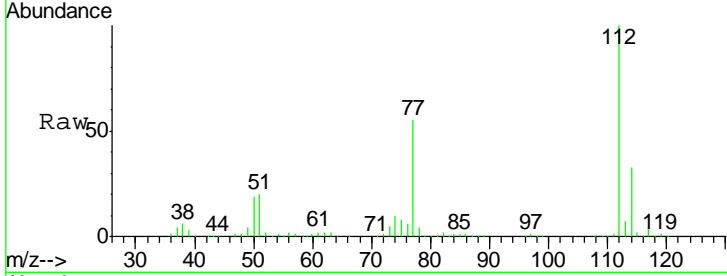


#65  
 Chlorobenzene  
 Concen: 23.59 ug/l  
 RT: 10.15 min Scan# 1568  
 Delta R.T. 0.00 min  
 Lab File: VX001084.D  
 Acq: 24 Apr 2018 18:28

Instrument :  
 MSVOA\_X  
 ClientSampled :  
 LF014MW015-180412

Tgt Ion: 112 Resp: 172431

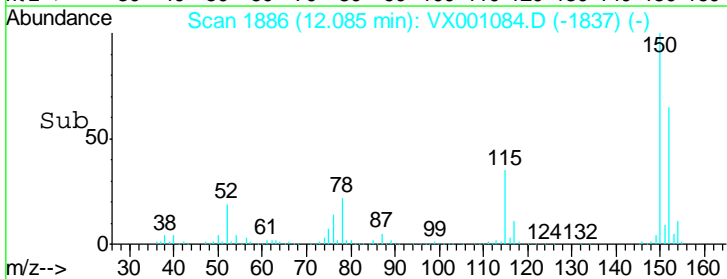
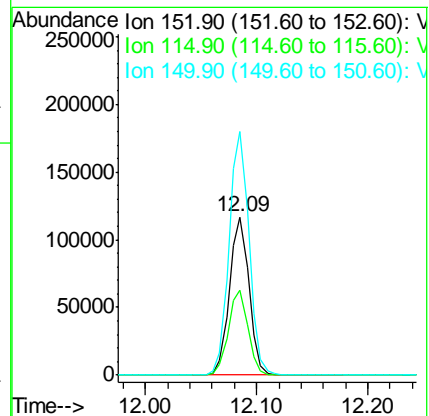
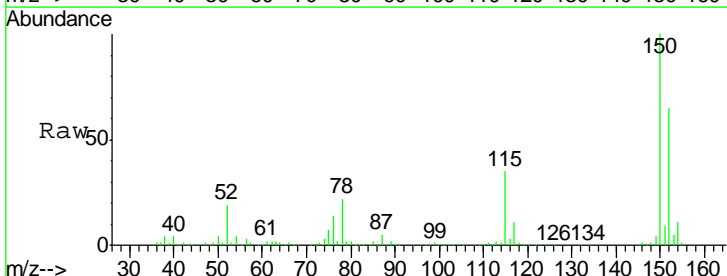
Ion	Ratio	Lower	Upper
112	100		
114	32.8	25.5	38.3



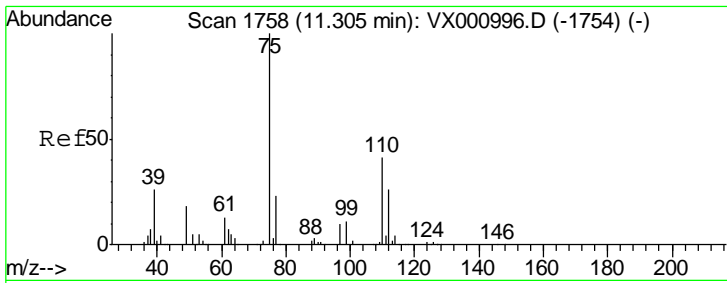
#72  
 1,4-Dichlorobenzene-d4  
 Concen: 50.00 ug/l  
 RT: 12.09 min Scan# 1886  
 Delta R.T. 0.00 min  
 Lab File: VX001084.D  
 Acq: 24 Apr 2018 18:28

Tgt Ion: 152 Resp: 141642

Ion	Ratio	Lower	Upper
152	100		
115	54.0	38.2	114.6
150	156.9	0.0	350.4



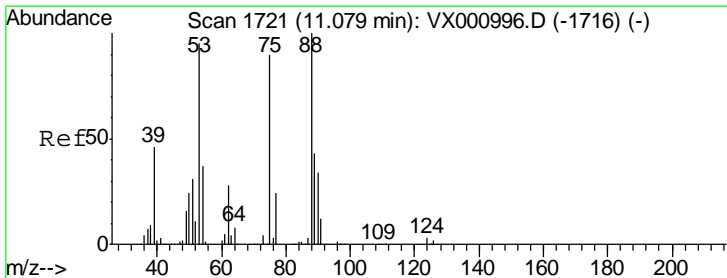
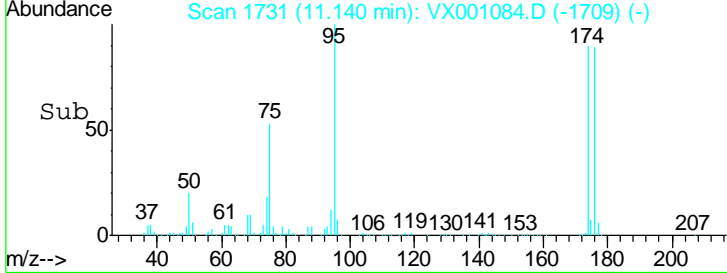
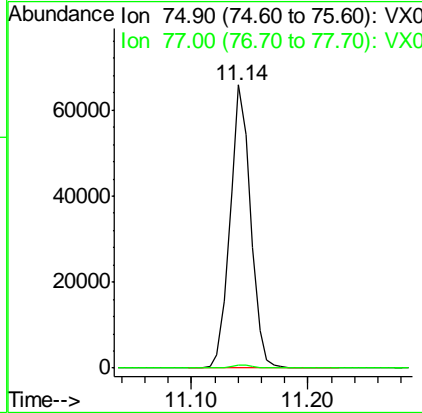
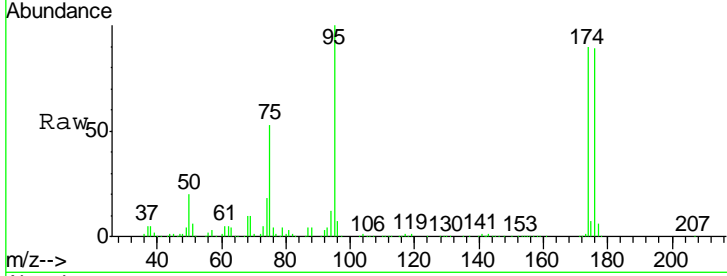




#76  
 1,2,3-Trichloropropane  
 Concen: 32.88 ug/l  
 RT: 11.14 min Scan# 1731  
 Delta R.T. -0.16 min  
 Lab File: VX001084.D  
 Acq: 24 Apr 2018 18:28

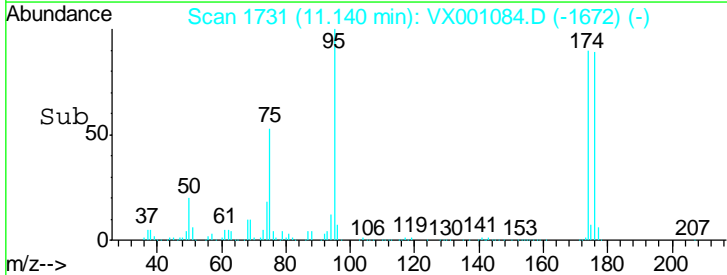
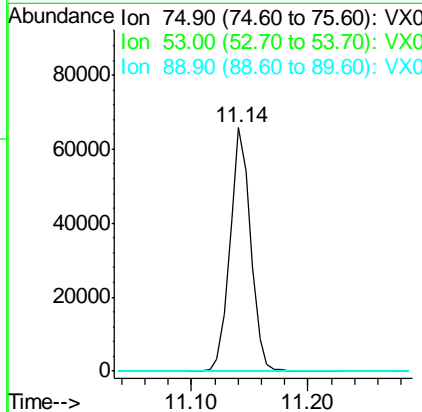
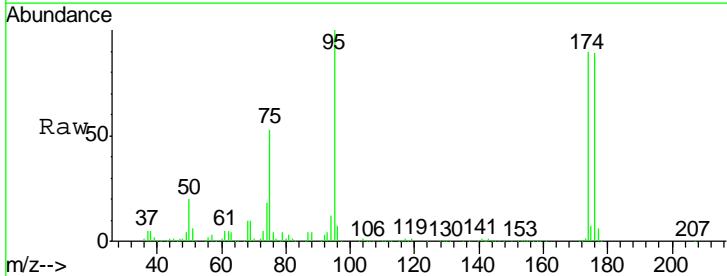
Instrument : MSVOA\_X  
 ClientSampled : LF014MW015-180412

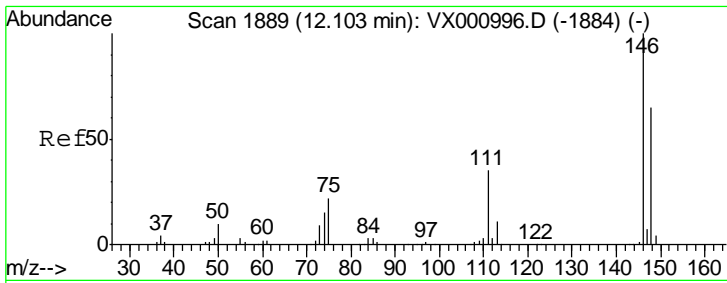
Tgt Ion: 75 Resp: 80798  
 Ion Ratio Lower Upper  
 75 100  
 77 1.4 19.6 58.7#



#81  
 trans-1,4-Dichloro-2-butene  
 Concen: 97.59 ug/l  
 RT: 11.14 min Scan# 1731  
 Delta R.T. 0.06 min  
 Lab File: VX001084.D  
 Acq: 24 Apr 2018 18:28

Tgt Ion: 75 Resp: 80798  
 Ion Ratio Lower Upper  
 75 100  
 53 0.1 83.4 125.2#  
 89 0.0 39.7 59.5#

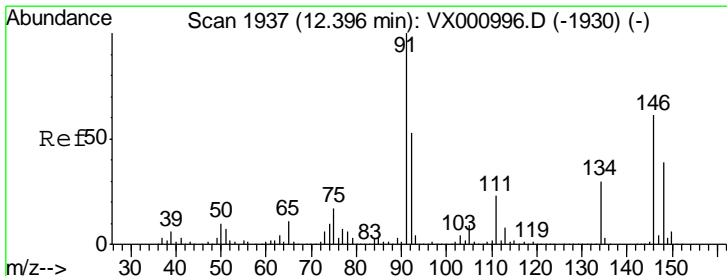
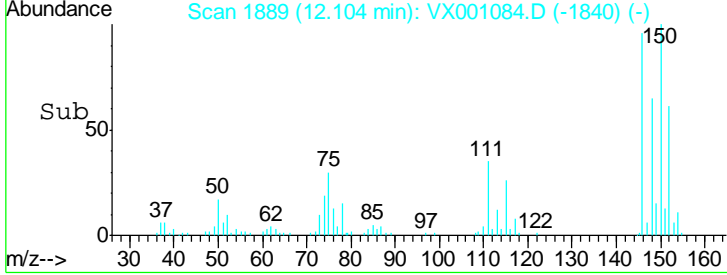
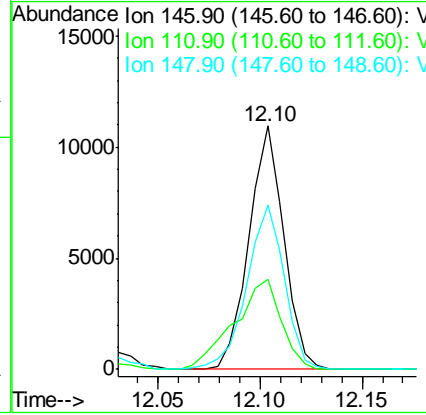
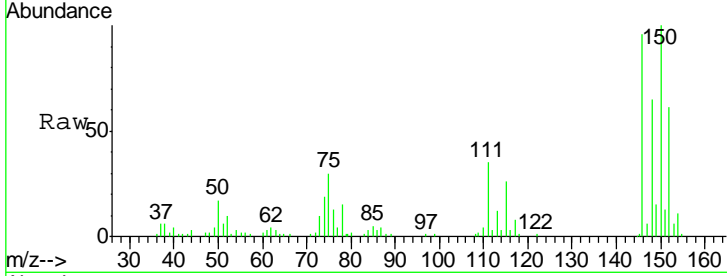




#88  
 1,4-Dichlorobenzene  
 Concen: 2.53 ug/l  
 RT: 12.10 min Scan# 1889  
 Delta R.T. 0.00 min  
 Lab File: VX001084.D  
 Acq: 24 Apr 2018 18:28

Instrument : MSVOA\_X  
 ClientSampled : LF014MW015-180412

Tgt Ion	Resp	Lower	Upper
146	13048		
111	49.7	18.0	54.0
148	72.2	32.4	97.0



#91  
 1,2-Dichlorobenzene  
 Concen: 2.13 ug/l  
 RT: 12.40 min Scan# 1937  
 Delta R.T. 0.00 min  
 Lab File: VX001084.D  
 Acq: 24 Apr 2018 18:28

Tgt Ion	Resp	Lower	Upper
146	10357		
111	36.6	18.6	56.0
148	62.8	32.3	96.8

