

Data Path : W:\HPCHEM1\MSVOA X\DATA\VX042718\
 Data File : VX001202.D
 Acq On : 28 Apr 2018 05:40
 Operator : JC/MD
 Sample : J2507-01
 Misc : 5.0mL/MSVOA X/WATER
 ALS Vial : 42 Sample Multiplier: 1

Instrument :
 MSVOA_X
 ClientSampleId :
 LF001MW003-180419

Integration Parameters: RTEINT.P

Integrator: RTE
 Smoothing : ON Filtering: 5
 Sampling : 1 Min Area: 3 % of largest Peak
 Start Thrs: 0.2 Max Peaks: 100
 Stop Thrs : 0 Peak Location: TOP

If leading or trailing edge < 100 prefer < Baseline drop else tangent >
 Peak separation: 5

Method : W:\HPCHEM1\MSVOA_X\METHOD\82X042618W.M
 Title : SW846 8260

Signal : TIC

peak #	R.T. min	first scan	max scan	last scan	PK TY	peak height	corr. area	corr. % max.	% of total
1	1.075	76	80	94	rBV	1595921	1747716	100.00%	22.273%
2	1.404	129	134	141	rBV	40741	47513	2.72%	0.606%
3	4.605	648	659	670	rBV	17696	48175	2.76%	0.614%
4	4.763	673	685	700	rBV2	13539	49746	2.85%	0.634%
5	5.513	794	808	819	rBV	146911	412553	23.61%	5.258%
6	5.672	823	834	849	rBV	183028	513853	29.40%	6.549%
7	6.074	890	900	910	rBV	157045	411826	23.56%	5.248%
8	6.482	959	967	978	rVB2	6606	17565	1.01%	0.224%
9	6.873	1019	1031	1048	rBV	259382	618422	35.38%	7.881%
10	8.720	1326	1334	1356	rBV	732402	1182405	67.65%	15.069%
11	9.561	1465	1472	1484	rBV	89155	132004	7.55%	1.682%
12	10.116	1556	1563	1586	rBV2	507151	978576	55.99%	12.471%
13	11.140	1726	1731	1746	rBV	635154	820228	46.93%	10.453%
14	12.085	1880	1886	1896	rVB	629498	813489	46.55%	10.367%
15	12.396	1932	1937	1943	rVB	42320	52650	3.01%	0.671%

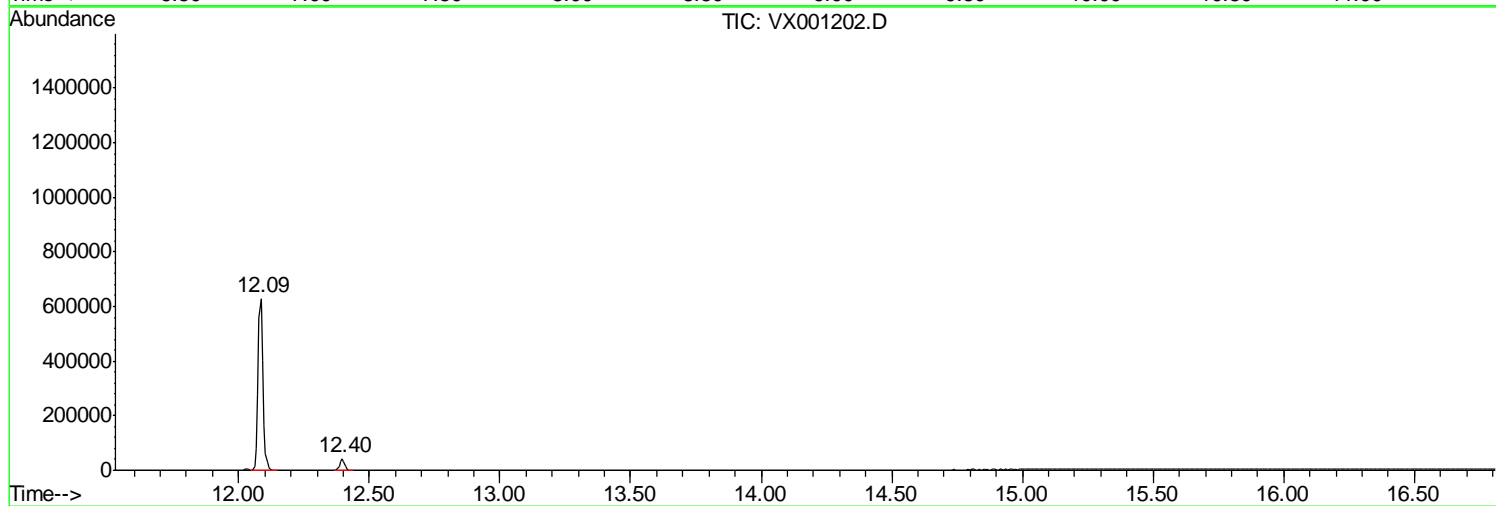
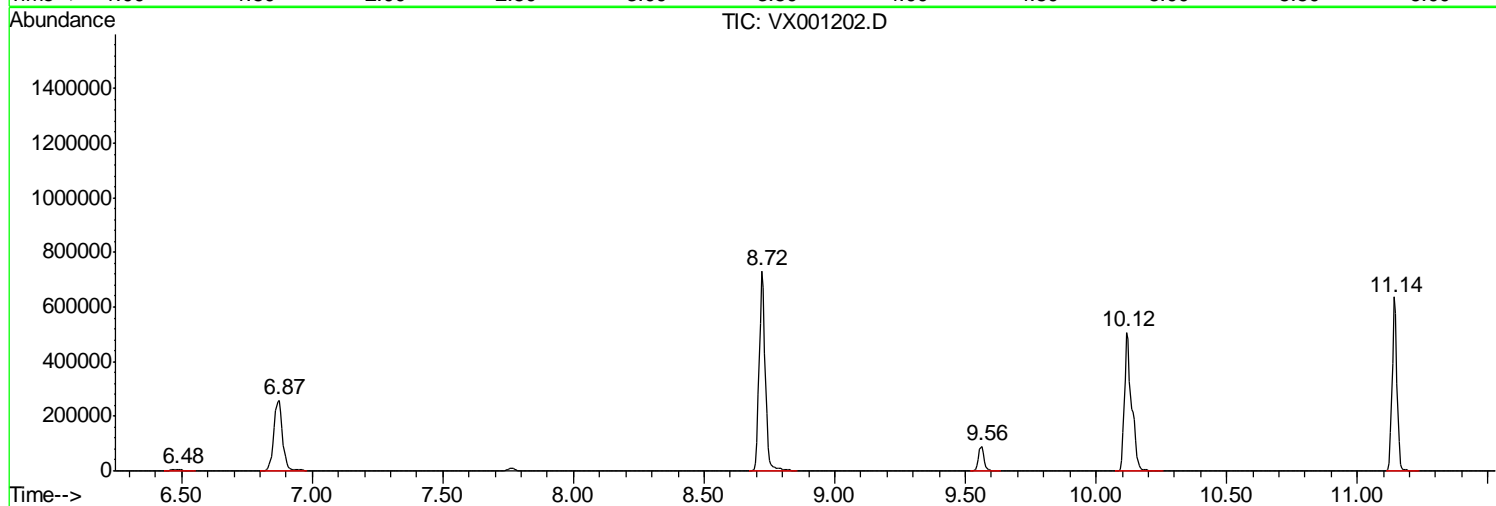
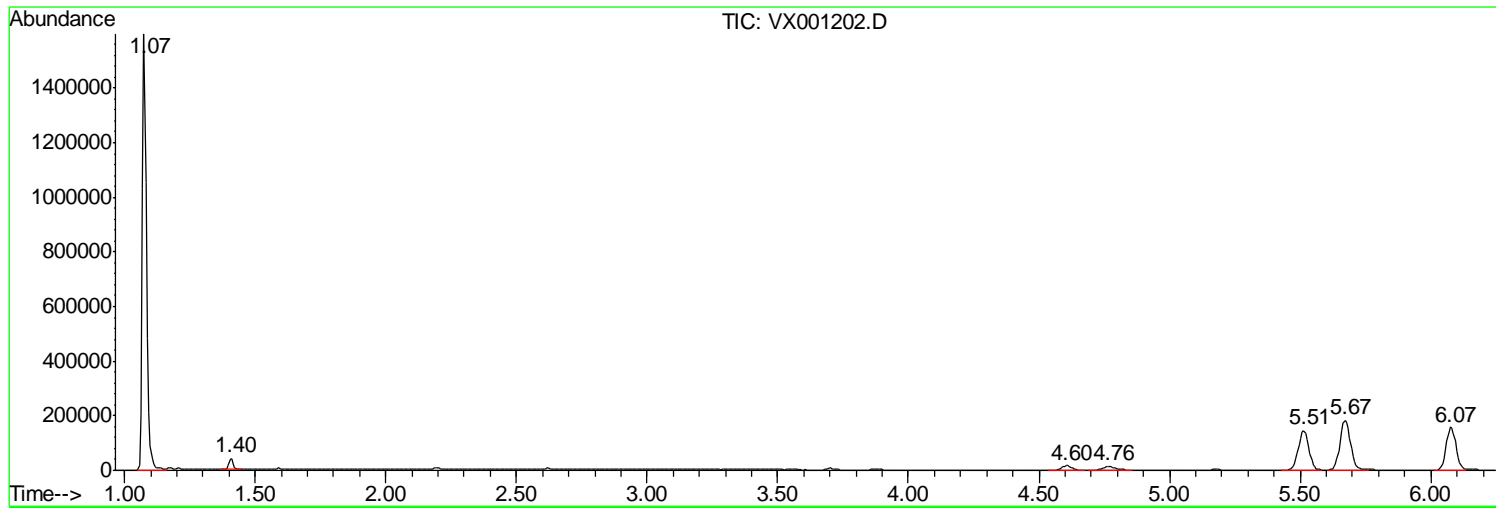
Sum of corrected areas: 7846721

Data Path : W:\HPCHEM1\MSVOA X\DATA\VX042718\
Data File : VX001202.D
Acq On : 28 Apr 2018 05:40
Operator : JC/MD
Sample : J2507-01
Misc : 5.0mL/MSVOA X/WATER
ALS Vial : 42 Sample Multiplier: 1

Instrument :
MSVOA_X
ClientSampleId :
LF001MW003-180419

Quant Method : W:\HPCHEM1\MSVOA_X\METHOD\82X042618W.M
Quant Title : SW846 8260

TIC Library : C:\DATABASE\NIST11.L
TIC Integration Parameters: LSCINT.P



Data Path : W:\HPCHEM1\MSVOA X\DATA\VX042718\
 Data File : VX001202.D
 Acq On : 28 Apr 2018 05:40
 Operator : JC/MD
 Sample : J2507-01
 Misc : 5.0mL/MSVOA X/WATER
 ALS Vial : 42 Sample Multiplier: 1

Instrument :
 MSVOA_X
 ClientSampleID :
 LF001MW003-180419

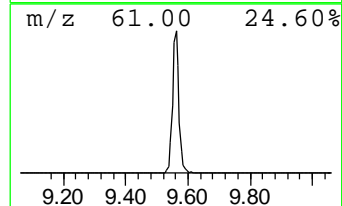
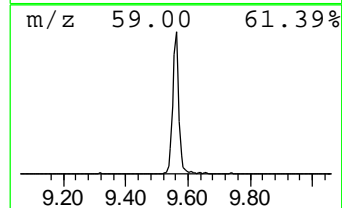
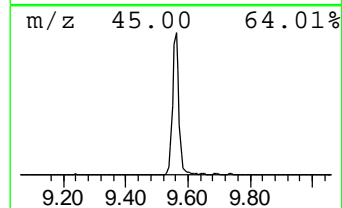
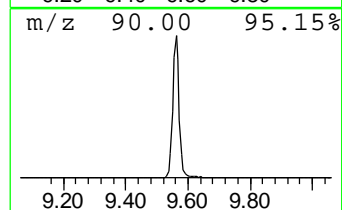
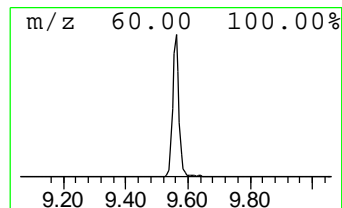
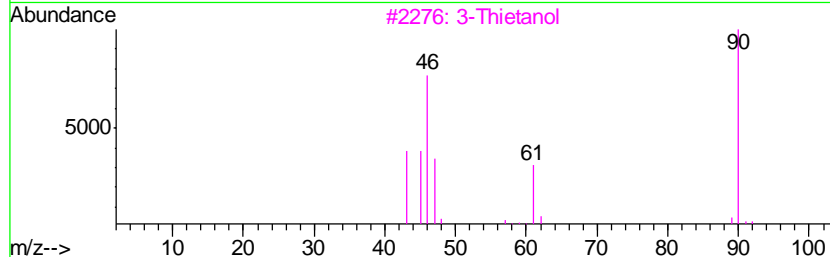
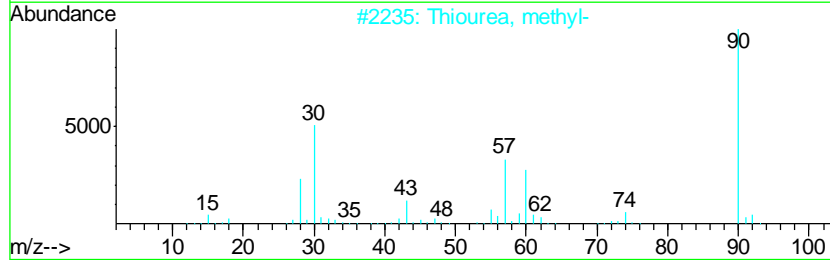
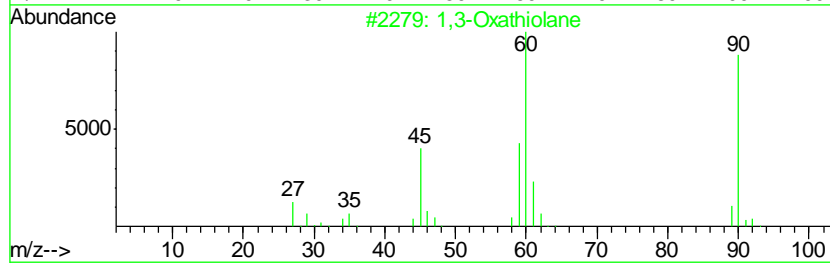
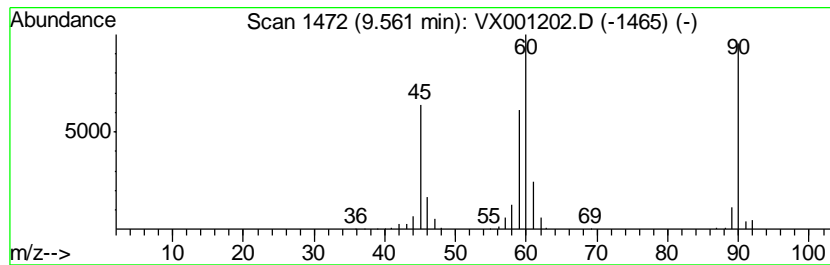
Quant Method : W:\HPCHEM1\MSVOA_X\METHOD\82X042618W.M
 Quant Title : SW846 8260

TIC Library : C:\DATABASE\NIST11.L
 TIC Integration Parameters: LSCINT.P

 Peak Number 2 1,3-Oxathiolane Concentration Rank 2

R.T.	EstConc	Area	Relative to ISTD	R.T.
9.56	6.74 ug/l	132004	Chlorobenzene-d5	10.12

Hit#	of	Tentative ID	MW	MolForm	CAS#	Qual
1	5	1,3-Oxathiolane	90	C3H6OS	002094-97-5	91
2		Thiourea, methyl-	90	C2H6N2S	000598-52-7	50
3		3-Thietanol	90	C3H6OS	010304-16-2	42
4		Hydrazinecarboxylic acid, methyl...	90	C2H6N2O2	006294-89-9	38
5		Acrolein, 2-chloro-	90	C3H3ClO	000683-51-2	36



Data Path : W:\HPCHEM1\MSVOA_X\DATA\VX042718\
Data File : VX001202.D
Acq On : 28 Apr 2018 05:40
Operator : JC/MD
Sample : J2507-01
Misc : 5.0mL/MSVOA_X/WATER
ALS Vial : 42 Sample Multiplier: 1

Instrument :
MSVOA_X
ClientSampleId :
LF001MW003-180419

Quant Method : W:\HPCHEM1\MSVOA_X\METHOD\82X042618W.M
Quant Title : SW846 8260

TIC Library : C:\DATABASE\NIST11.L
TIC Integration Parameters: LSCINT.P

TIC Top Hit name	RT	EstConc	Units	Response	--Internal Standard--			
					#	RT	Resp	Conc
1,3-Oxathiolane	9.56	6.7	ug/l	132004	3	10.12	978576	50.0