

Data Path : W:\HPCHEM1\MSVOA X\DATA\VX042818\
 Data File : VX001239.D
 Acq On : 29 Apr 2018 03:02
 Operator : JC/MD
 Sample : J2600-08
 Misc : 5.0mL/MSVOA X/WATER
 ALS Vial : 36 Sample Multiplier: 1

Instrument :
 MSVOA_X
ClientSampled :
 BP-TT-AOC22-MW10-20180424

Quant Time: Apr 30 03:38:32 2018
 Quant Method : W:\HPCHEM1\MSVOA_X\METHOD\82X042618W.M
 Quant Title : SW846 8260
 QLast Update : Fri Apr 27 01:51:42 2018
 Response via : Initial Calibration

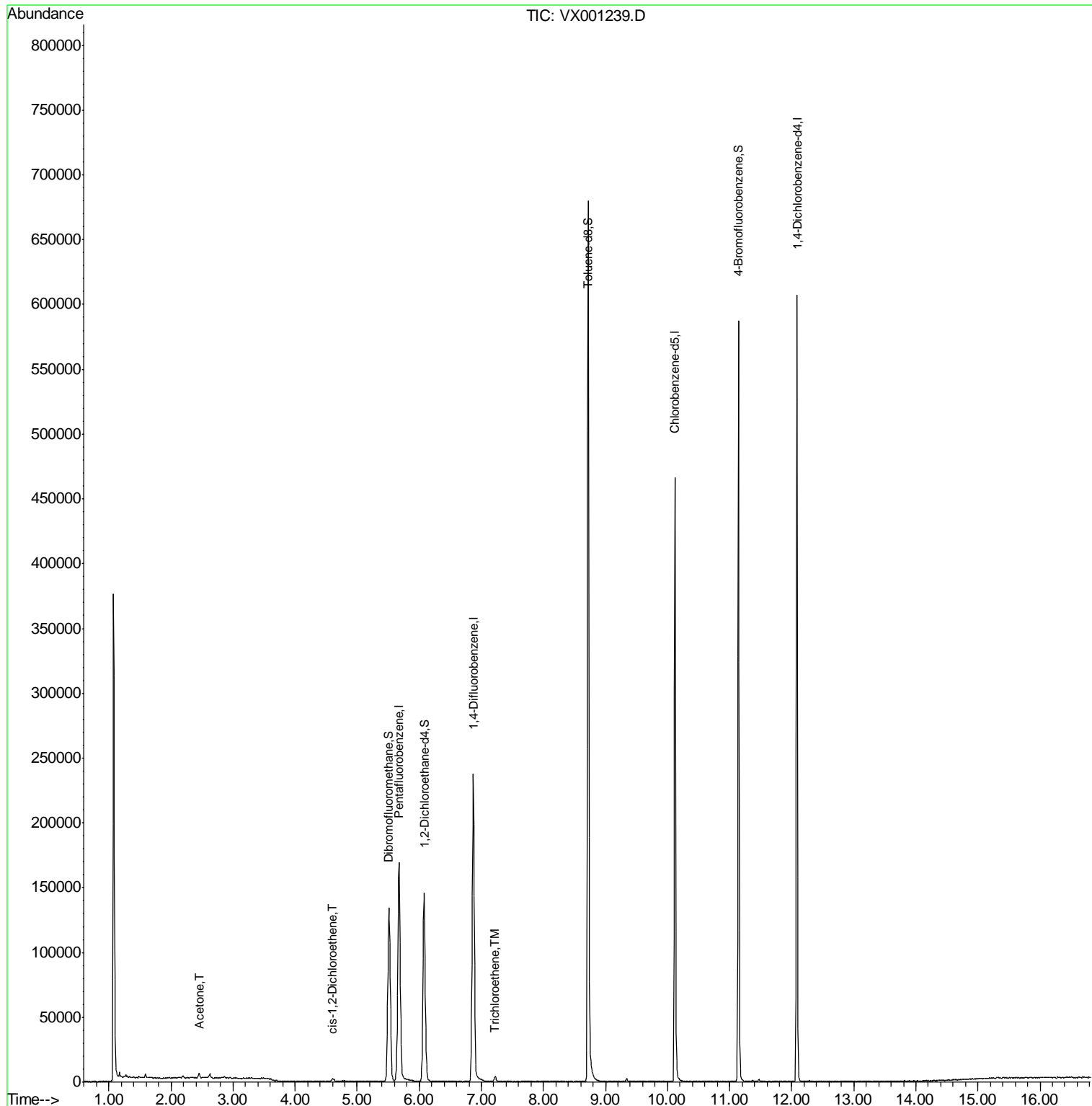
Internal Standards	R.T.	QIon	Response	Conc	Units	Dev(Min)
1) Pentafluorobenzene	5.67	168	178703	50.00	ug/l	0.00
34) 1,4-Difluorobenzene	6.87	114	247764	50.00	ug/l	0.00
63) Chlorobenzene-d5	10.12	117	223458	50.00	ug/l	0.00
72) 1,4-Dichlorobenzene-d4	12.08	152	130813	50.00	ug/l	0.00
System Monitoring Compounds						
33) 1,2-Dichloroethane-d4	6.08	65	135441	48.89	ug/l	0.00
Spiked Amount	50.000		Recovery	=	97.78%	
35) Dibromofluoromethane	5.51	113	108657	52.98	ug/l	0.00
Spiked Amount	50.000		Recovery	=	105.96%	
50) Toluene-d8	8.72	98	412557	53.31	ug/l	0.00
Spiked Amount	50.000		Recovery	=	106.62%	
62) 4-Bromofluorobenzene	11.14	95	140675	46.53	ug/l	0.00
Spiked Amount	50.000		Recovery	=	93.06%	
Target Compounds						
16) Acetone	2.45	43	4165	3.66	ug/l	97
27) cis-1,2-Dichloroethene	4.60	96	1241	0.57	ug/l	88
44) Trichloroethene	7.21	130	1506	0.64	ug/l	86

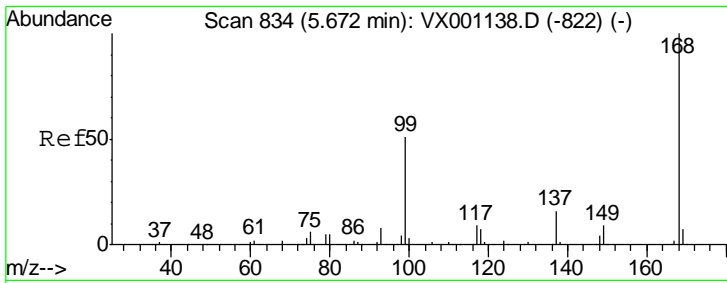
(#) = qualifier out of range (m) = manual integration (+) = signals summed

Data Path : W:\HPCHEM1\MSVOA X\DATA\VX042818\
 Data File : VX001239.D
 Acq On : 29 Apr 2018 03:02
 Operator : JC/MD
 Sample : J2600-08
 Misc : 5.0mL/MSVOA X/WATER
 ALS Vial : 36 Sample Multiplier: 1

Instrument :
 MSVOA_X
ClientSampled :
 BP-TT-AOC22-MW10-20180424

Quant Time: Apr 30 03:38:32 2018
 Quant Method : W:\HPCHEM1\MSVOA_X\METHOD\82X042618W.M
 Quant Title : SW846 8260
 QLast Update : Fri Apr 27 01:51:42 2018
 Response via : Initial Calibration

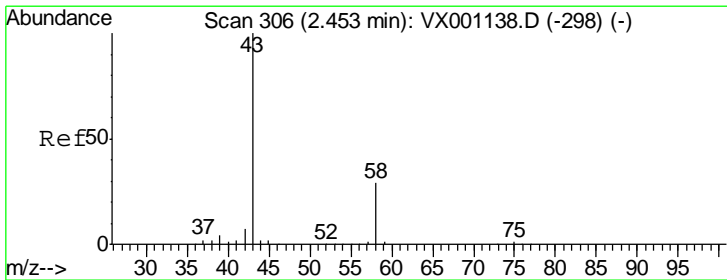
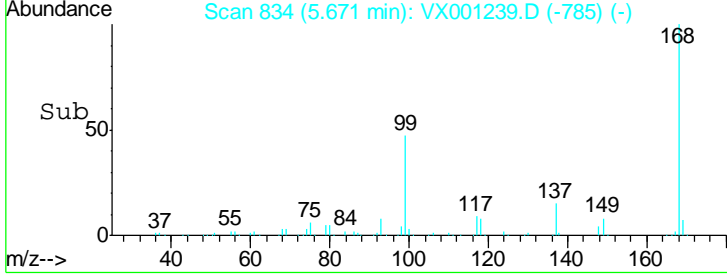
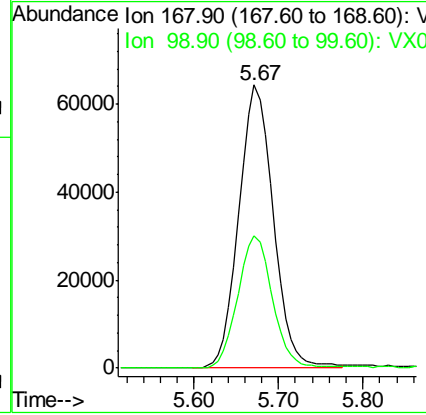
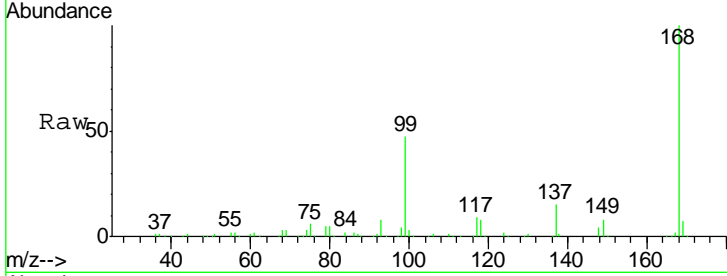




#1
 Pentafluorobenzene
 Concen: 50.00 ug/l
 RT: 5.67 min Scan# 834
 Delta R.T. -0.00 min
 Lab File: VX001239.D
 Acq: 29 Apr 2018 03:02

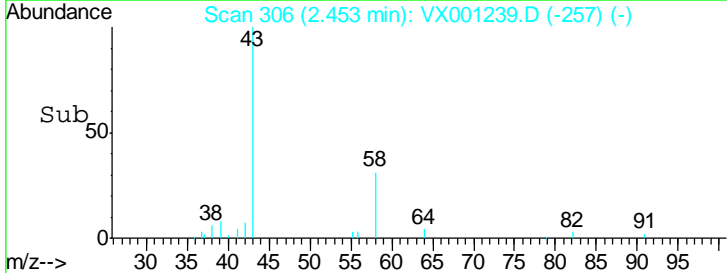
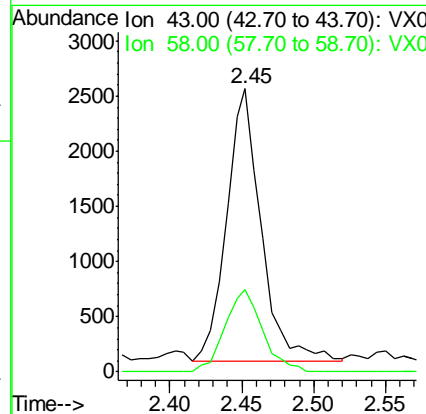
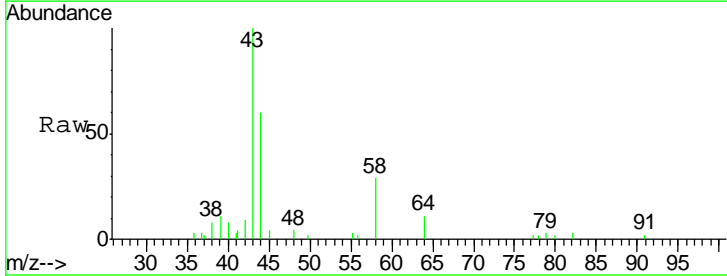
Instrument :
 MSVOA_X
 ClientSampleId :
 BP-TT-AOC22-MW10-20180424

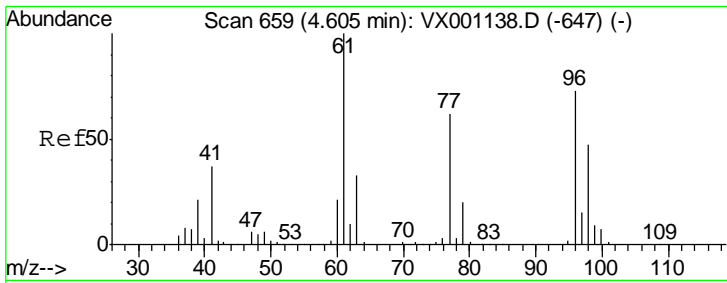
Tgt Ion: 168 Resp: 178703
 Ion Ratio Lower Upper
 168 100
 99 46.6 40.6 60.8



#16
 Acetone
 Concen: 3.66 ug/l
 RT: 2.45 min Scan# 306
 Delta R.T. -0.00 min
 Lab File: VX001239.D
 Acq: 29 Apr 2018 03:02

Tgt Ion: 43 Resp: 4165
 Ion Ratio Lower Upper
 43 100
 58 30.4 23.0 34.6

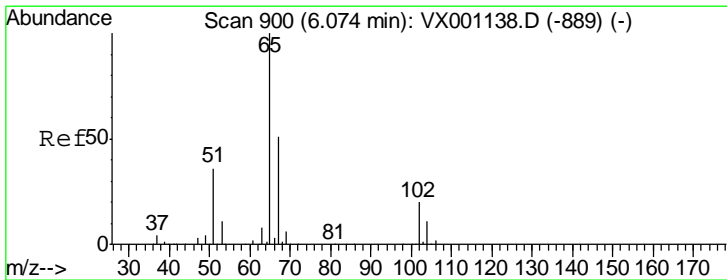
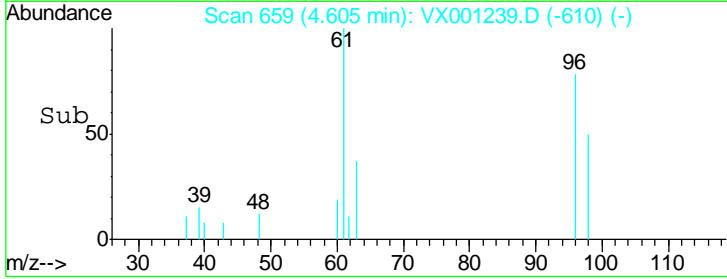
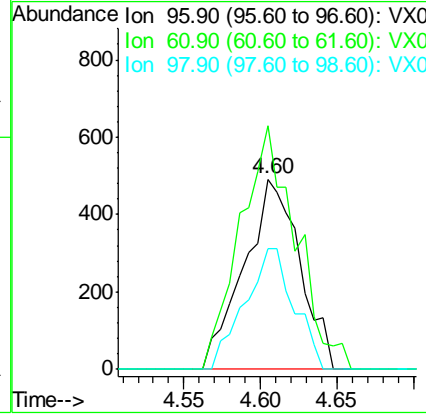
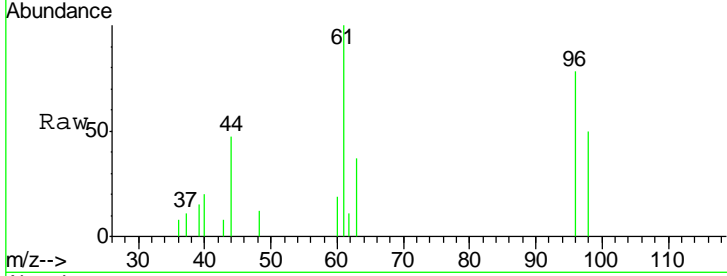




#27
 cis-1,2-Dichloroethene
 Concen: 0.57 ug/l
 RT: 4.60 min Scan# 659
 Delta R.T. -0.00 min
 Lab File: VX001239.D
 Acq: 29 Apr 2018 03:02

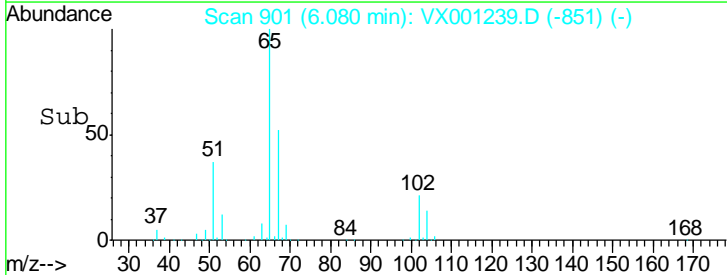
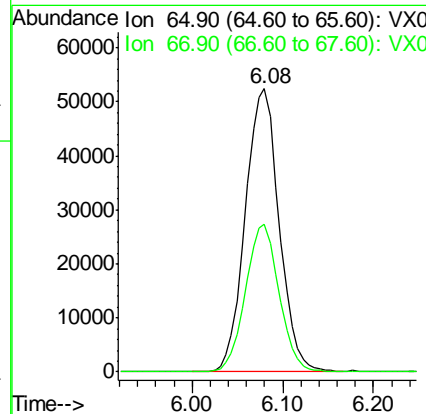
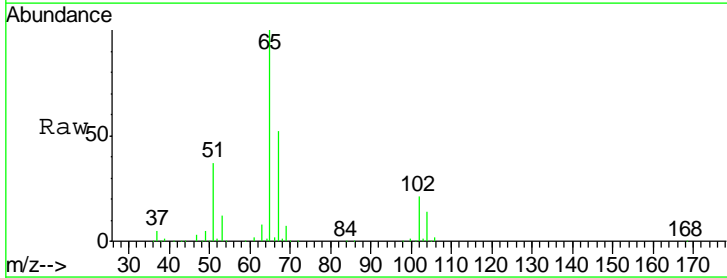
Instrument :
 MSVOA_X
ClientSampled :
 BP-TT-AOC22-MW10-20180424

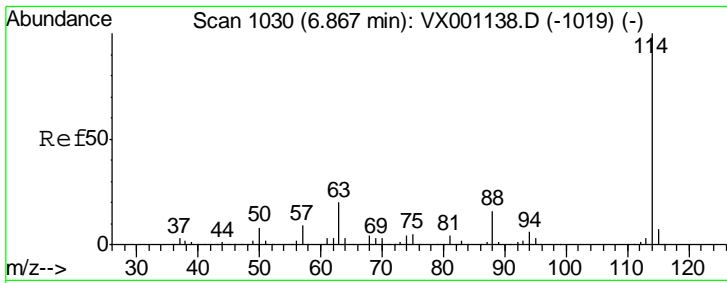
Tgt Ion	Resp	Lower	Upper
96	1241		
61	128.1	0.0	289.0
98	56.2	0.0	128.2



#33
 1,2-Dichloroethane-d4
 Concen: 48.89 ug/l
 RT: 6.08 min Scan# 901
 Delta R.T. 0.01 min
 Lab File: VX001239.D
 Acq: 29 Apr 2018 03:02

Tgt Ion	Resp	Lower	Upper
65	135441		
67	51.8	0.0	102.2

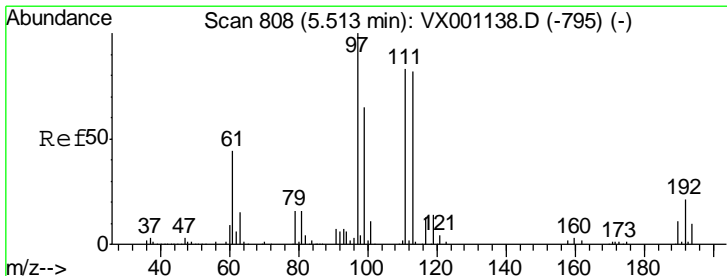
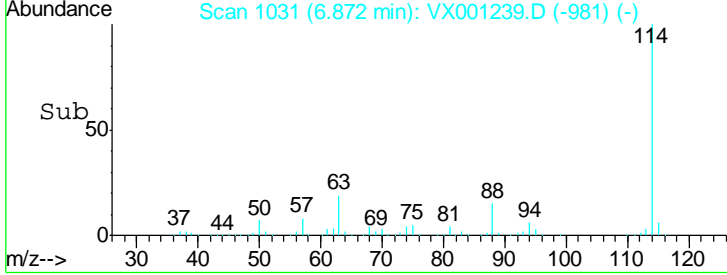
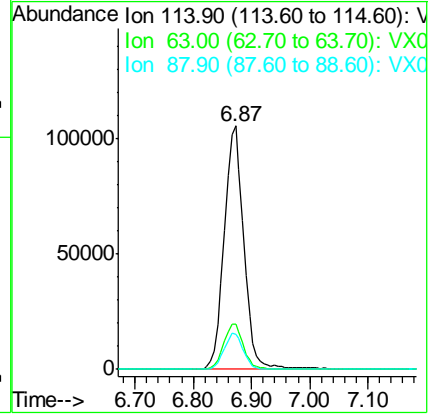
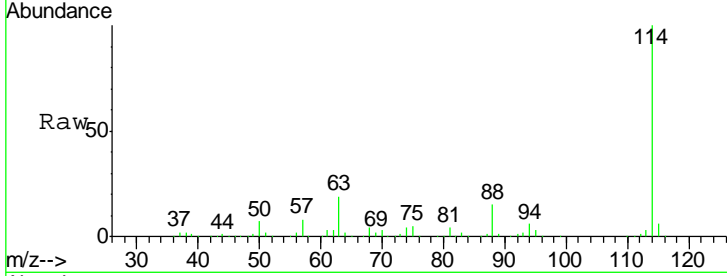




#34
 1,4-Difluorobenzene
 Concen: 50.00 ug/l
 RT: 6.87 min Scan# 1031
 Delta R.T. 0.01 min
 Lab File: VX001239.D
 Acq: 29 Apr 2018 03:02

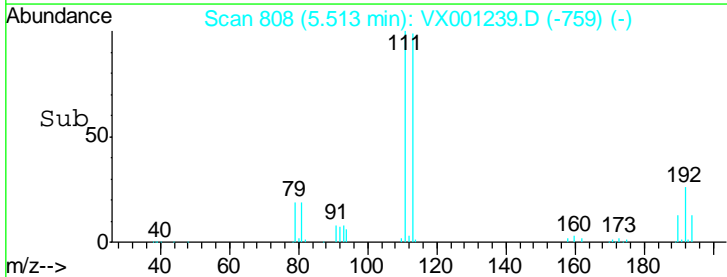
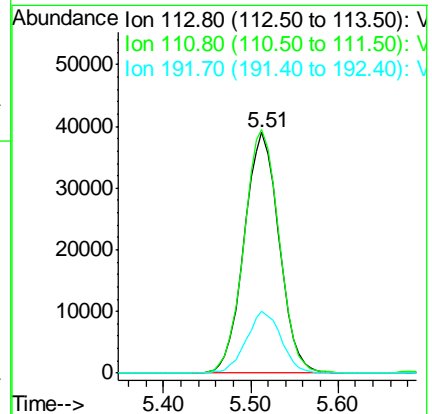
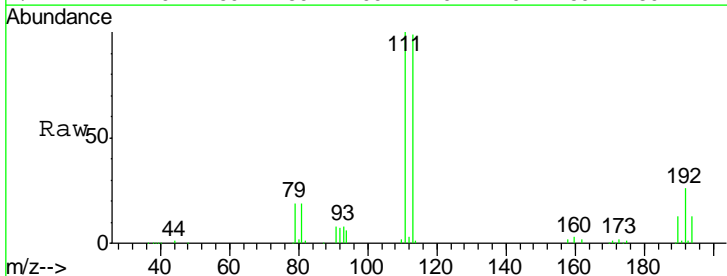
Instrument :
 MSVOA_X
 ClientSampled :
 BP-TT-AOC22-MW10-20180424

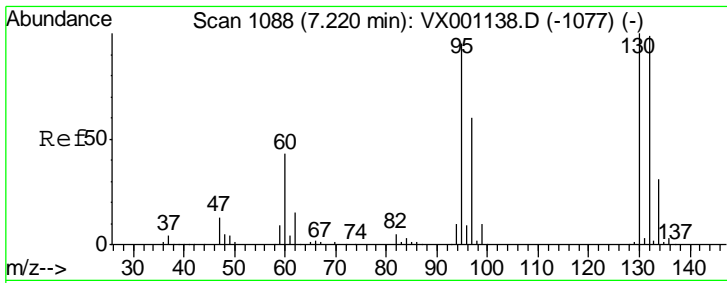
Tgt Ion	Resp	Lower	Upper
114	247764		
63	18.5	0.0	40.4
88	14.6	0.0	31.8



#35
 Dibromofluoromethane
 Concen: 52.98 ug/l
 RT: 5.51 min Scan# 808
 Delta R.T. -0.00 min
 Lab File: VX001239.D
 Acq: 29 Apr 2018 03:02

Tgt Ion	Resp	Lower	Upper
113	108657		
111	101.5	82.2	123.4
192	25.7	20.6	30.8

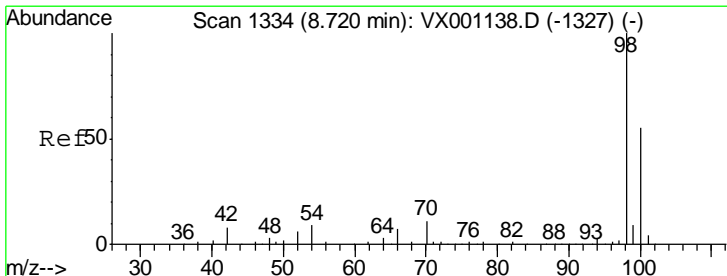
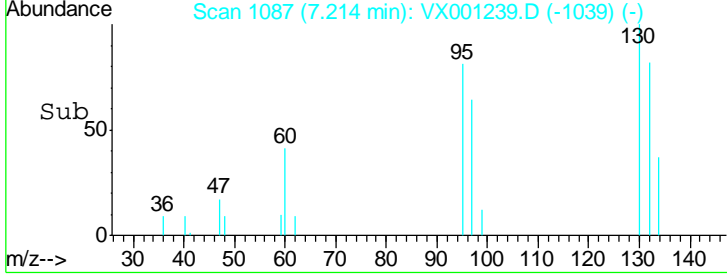
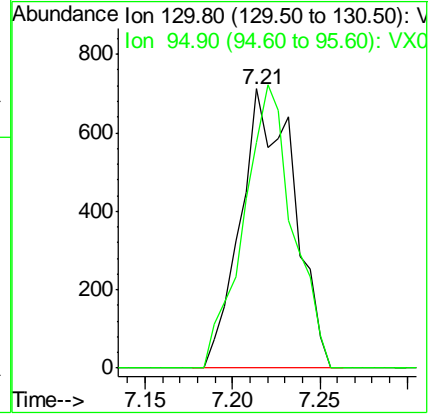
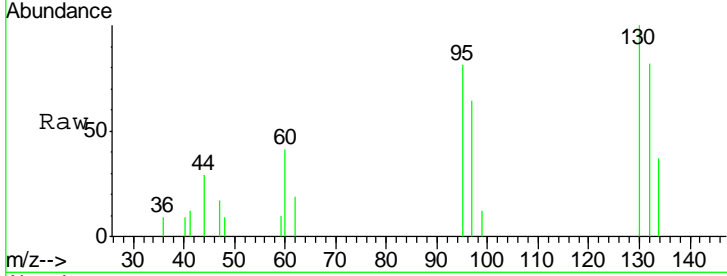




#44
 Trichloroethene
 Concen: 0.64 ug/l
 RT: 7.21 min Scan# 1087
 Delta R.T. -0.01 min
 Lab File: VX001239.D
 Acq: 29 Apr 2018 03:02

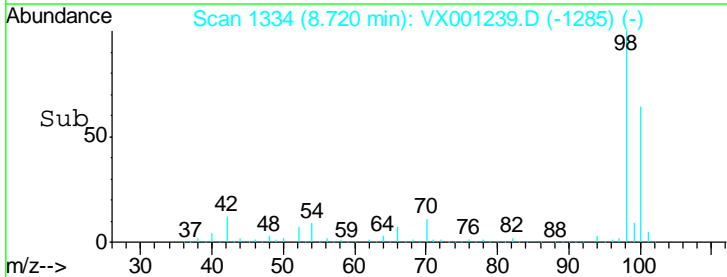
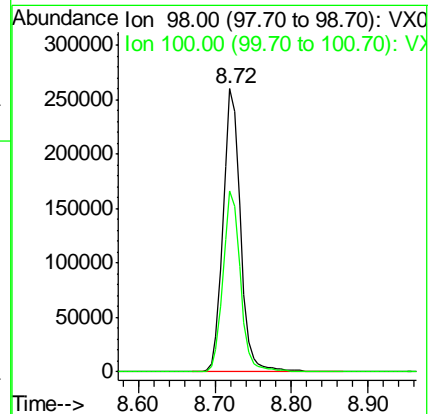
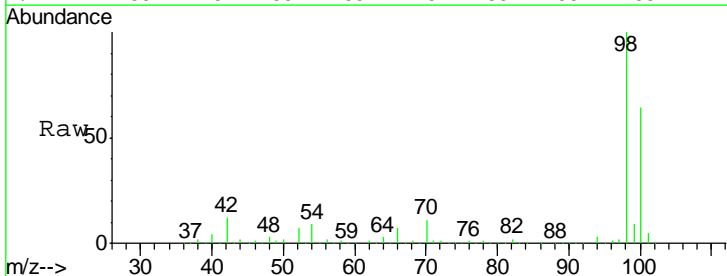
Instrument : MSVOA_X
 ClientSampled : BP-TT-AOC22-MW10-20180424

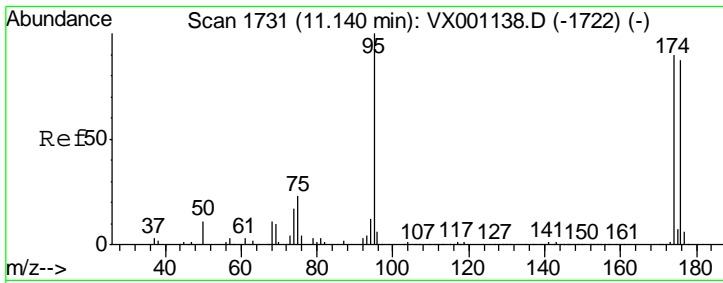
Tgt Ion	Resp	Lower	Upper
130	100		
95	81.0	0.0	189.6



#50
 Toluene-d8
 Concen: 53.31 ug/l
 RT: 8.72 min Scan# 1334
 Delta R.T. -0.00 min
 Lab File: VX001239.D
 Acq: 29 Apr 2018 03:02

Tgt Ion	Resp	Lower	Upper
98	100		
100	64.1	51.8	77.6

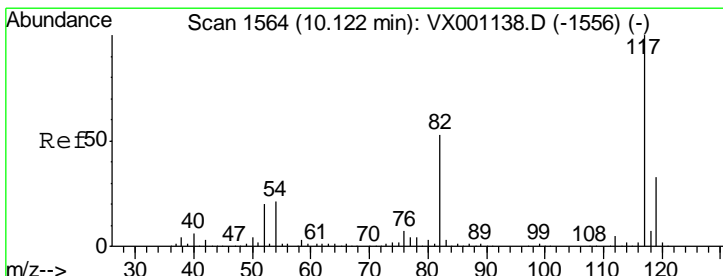
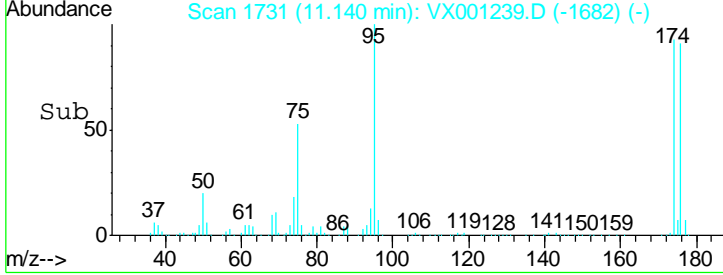
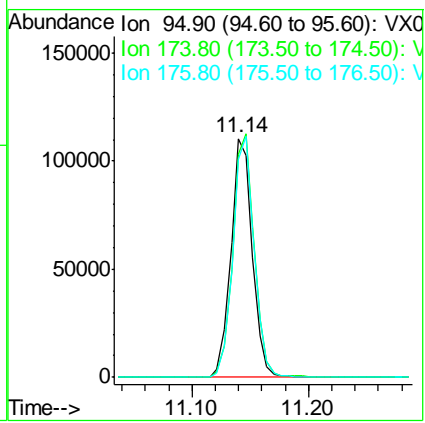
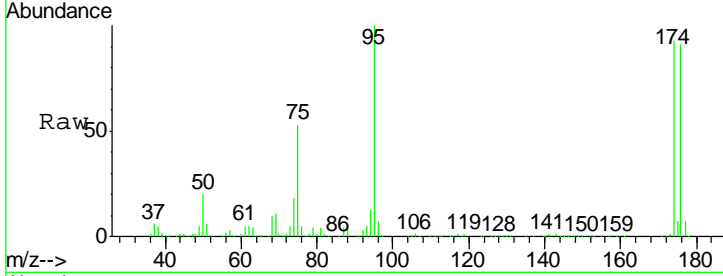




#62
 4-Bromofluorobenzene
 Concen: 46.53 ug/l
 RT: 11.14 min Scan# 1731
 Delta R.T. -0.00 min
 Lab File: VX001239.D
 Acq: 29 Apr 2018 03:02

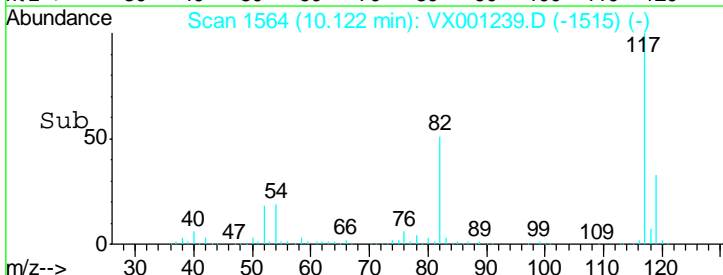
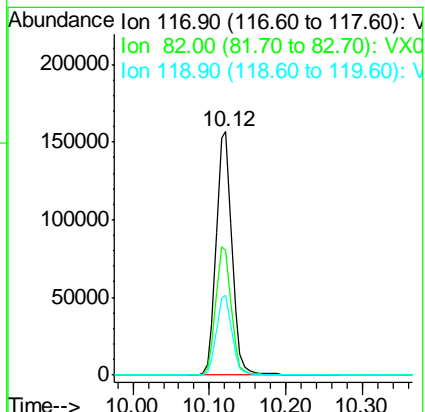
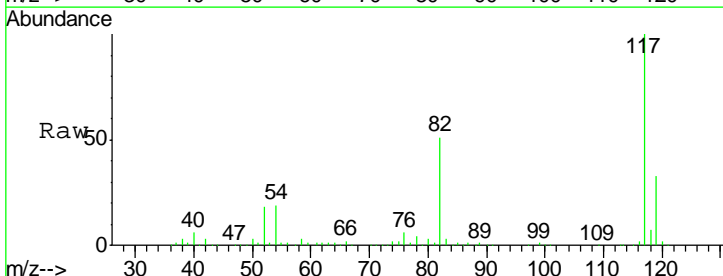
Instrument : MSVOA_X
 ClientSampled : BP-TT-AOC22-MW10-20180424

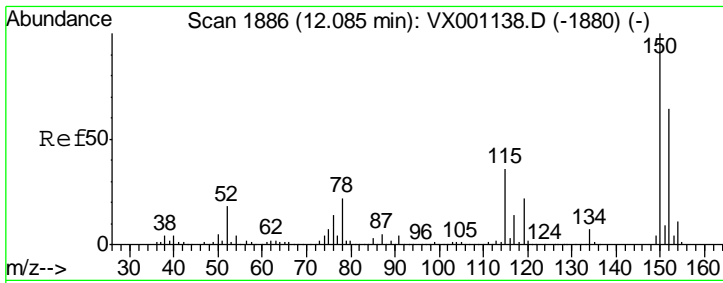
Tgt Ion	Resp	Lower	Upper
95	140675		
174	102.1	0.0	194.4
176	100.8	0.0	190.2



#63
 Chlorobenzene-d5
 Concen: 50.00 ug/l
 RT: 10.12 min Scan# 1564
 Delta R.T. -0.00 min
 Lab File: VX001239.D
 Acq: 29 Apr 2018 03:02

Tgt Ion	Resp	Lower	Upper
117	223458		
82	50.9	42.1	63.1
119	32.5	26.1	39.1





#72
 1,4-Dichlorobenzene-d4
 Concen: 50.00 ug/l
 RT: 12.08 min Scan# 1886
 Delta R.T. -0.00 min
 Lab File: VX001239.D
 Acq: 29 Apr 2018 03:02

Instrument : MSVOA_X
 ClientSampled : BP-TT-AOC22-MW10-20180424

Tot Ion	Resp	Lower	Upper
152	130813		
115	51.6	38.0	114.0
150	155.9	0.0	349.6

