

Data Path : W:\HPCHEM1\MSVOA X\DATA\VX042818\
 Data File : VX001211.D
 Acq On : 28 Apr 2018 14:13
 Operator : JC/MD
 Sample : J2564-06
 Misc : 5.0mL/MSVOA X/WATER
 ALS Vial : 6 Sample Multiplier: 1

Instrument :
 MSVOA_X
 ClientSampled :
 LS-UB-102

Integration Parameters: RTEINT.P

Integrator: RTE
 Smoothing : ON
 Sampling : 1
 Start Thrs: 0.2
 Stop Thrs : 0

Filtering: 5
 Min Area: 3 % of largest Peak
 Max Peaks: 100
 Peak Location: TOP

If leading or trailing edge < 100 prefer < Baseline drop else tangent >
 Peak separation: 5

Method : W:\HPCHEM1\MSVOA_X\METHOD\82X042618W.M
 Title : SW846 8260

Signal : TIC

peak #	R.T. min	first scan	max scan	last scan	PK TY	peak height	corr. area	corr. % max.	% of total
1	1.075	76	80	93	rBV	998058	1131500	13.70%	4.934%
2	2.453	300	306	316	rBV	73525	135589	1.64%	0.591%
3	4.714	668	677	700	rVB2	27367	88668	1.07%	0.387%
4	5.178	742	753	768	rBV3	38318	127305	1.54%	0.555%
5	5.513	796	808	823	rBV	113609	319148	3.87%	1.392%
6	5.672	823	834	849	rBV	170215	476329	5.77%	2.077%
7	6.074	890	900	918	rBV	120798	319220	3.87%	1.392%
8	6.866	1020	1030	1042	rBV	237017	561360	6.80%	2.448%
9	8.720	1328	1334	1341	rBV	549437	884888	10.72%	3.858%
10	8.793	1341	1346	1359	rVB	111980	187554	2.27%	0.818%
11	10.116	1556	1563	1573	rBV	462615	678409	8.22%	2.958%
12	11.024	1707	1712	1720	rBV	169277	219399	2.66%	0.957%
13	11.140	1726	1731	1737	rBV	498180	652081	7.90%	2.843%
14	12.085	1881	1886	1893	rBV	628544	813719	9.86%	3.548%
15	12.305	1915	1922	1930	rBV	6835635	8256234	100.00%	36.000%
16	12.591	1964	1969	1974	rBV2	64432	89857	1.09%	0.392%
17	12.676	1974	1983	1986	rBV	255377	343428	4.16%	1.497%
18	12.762	1992	1997	2004	rVB2	356322	520135	6.30%	2.268%
19	12.951	2024	2028	2030	rBV	77337	104856	1.27%	0.457%
20	12.981	2030	2033	2037	rVB	223783	260529	3.16%	1.136%
21	13.231	2070	2074	2084	rVB	605696	739239	8.95%	3.223%
22	13.353	2089	2094	2099	rVB2	944079	1244774	15.08%	5.428%
23	13.402	2099	2102	2106	rBV	117809	139703	1.69%	0.609%
24	13.487	2111	2116	2121	rVB	230784	293086	3.55%	1.278%
25	13.609	2132	2136	2139	rBV	84895	112800	1.37%	0.492%
26	13.646	2139	2142	2146	rVV2	94000	132430	1.60%	0.577%
27	13.725	2153	2155	2161	rVB2	143304	201947	2.45%	0.881%
28	13.853	2172	2176	2181	rVB2	53974	102456	1.24%	0.447%
29	13.993	2190	2199	2202	rBV3	70984	118985	1.44%	0.519%
30	14.140	2218	2223	2226	rBV2	61352	89613	1.09%	0.391%
31	14.280	2241	2246	2256	rBV2	125528	259490	3.14%	1.131%
32	14.383	2259	2263	2268	rVV	68642	104630	1.27%	0.456%
33	14.438	2268	2272	2276	rVB	116423	148208	1.80%	0.646%
34	14.548	2285	2290	2294	rBV2	87004	127383	1.54%	0.555%

Data Path : W:\HPCHEM1\MSVOA X\DATA\VX042818\
Data File : VX001211.D
Acq On : 28 Apr 2018 14:13
Operator : JC/MD
Sample : J2564-06
Misc : 5.0mL/MSVOA X/WATER
ALS Vial : 6 Sample Multiplier: 1

Instrument :
MSVOA_X
ClientSampleId :
LS-UB-102

Integration Parameters: RTEINT.P
Integrator: RTE
Smoothing : ON Filtering: 5
Sampling : 1 Min Area: 3 % of largest Peak
Start Thrs: 0.2 Max Peaks: 100
Stop Thrs : 0 Peak Location: TOP

If leading or trailing edge < 100 prefer < Baseline drop else tangent >
Peak separation: 5

Method : W:\HPCHEM1\MSVOA_X\METHOD\82X042618W.M
Title : SW846 8260

35	14.700	2311	2315	2319	rVV	256933	303041	3.67%	1.321%
36	14.847	2334	2339	2348	rBV	809582	1033031	12.51%	4.504%
37	15.450	2432	2438	2441	rBV	64337	98469	1.19%	0.429%
38	15.554	2448	2455	2460	rBV	226734	366252	4.44%	1.597%
39	15.694	2471	2478	2482	rBV	262444	438330	5.31%	1.911%
40	15.731	2482	2484	2491	rVB	140572	202109	2.45%	0.881%
41	15.926	2506	2516	2526	rVB2	89433	240750	2.92%	1.050%
42	16.078	2535	2541	2552	rVB	50160	93000	1.13%	0.406%
43	16.426	2590	2598	2607	rBV2	84439	173908	2.11%	0.758%

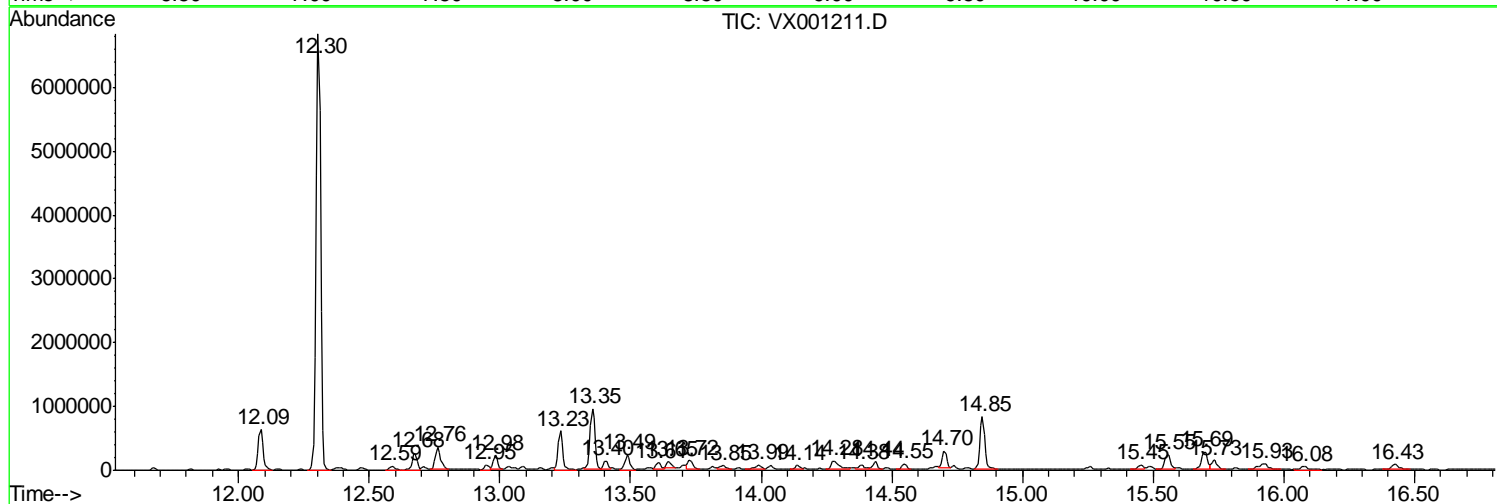
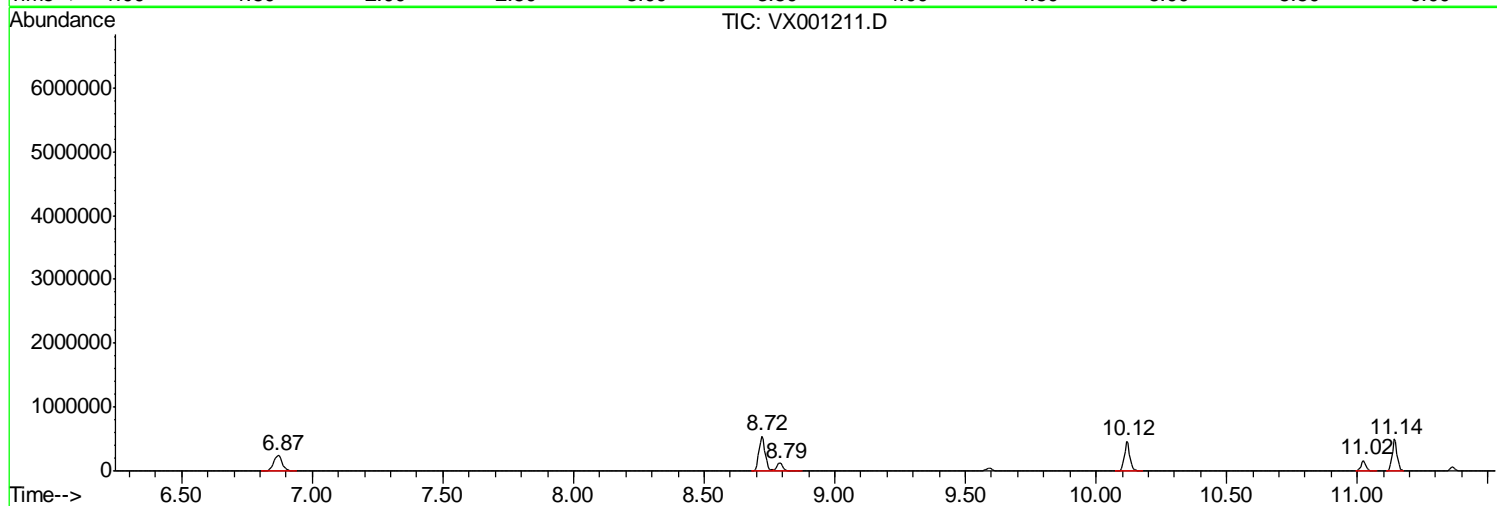
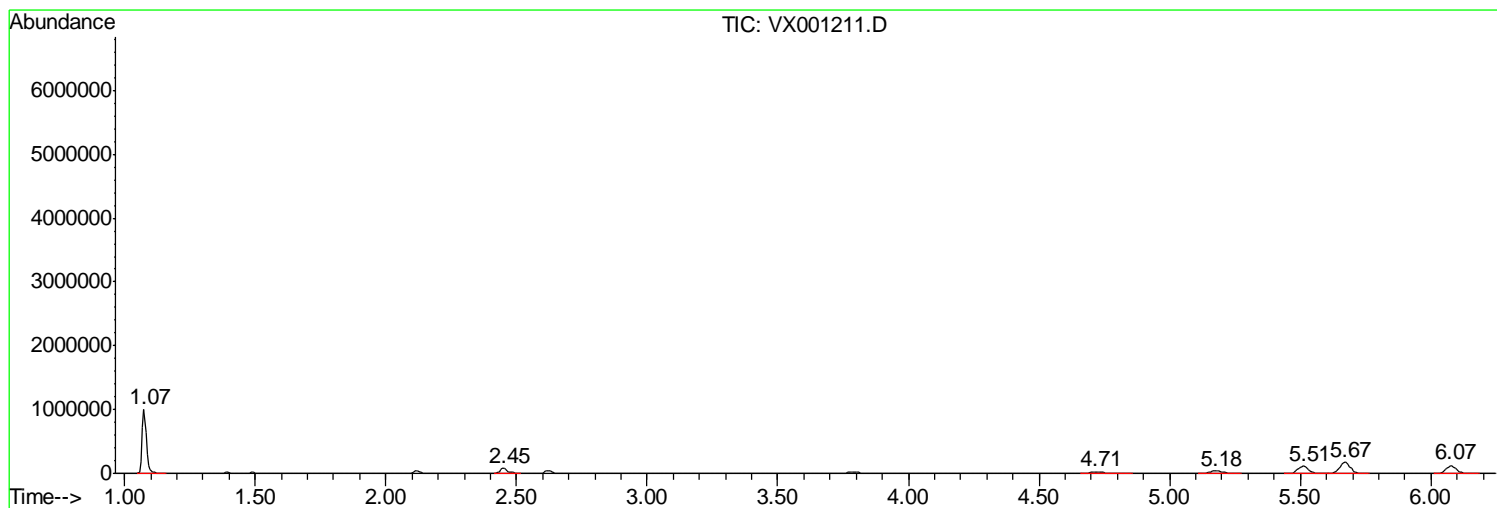
Sum of corrected areas: 22933842

Data Path : W:\HPCHEM1\MSVOA X\DATA\VX042818\
 Data File : VX001211.D
 Acq On : 28 Apr 2018 14:13
 Operator : JC/MD
 Sample : J2564-06
 Misc : 5.0mL/MSVOA X/WATER
 ALS Vial : 6 Sample Multiplier: 1

Instrument :
 MSVOA_X
 ClientSampled :
 LS-UB-102

Quant Method : W:\HPCHEM1\MSVOA_X\METHOD\82X042618W.M
 Quant Title : SW846 8260

TIC Library : C:\DATABASE\NIST11.L
 TIC Integration Parameters: LSCINT.P



Data Path : W:\HPCHEM1\MSVOA X\DATA\VX042818\
 Data File : VX001211.D
 Acq On : 28 Apr 2018 14:13
 Operator : JC/MD
 Sample : J2564-06
 Misc : 5.0mL/MSVOA X/WATER
 ALS Vial : 6 Sample Multiplier: 1

Instrument :
 MSVOA_X
 ClientSampleID :
 LS-UB-102

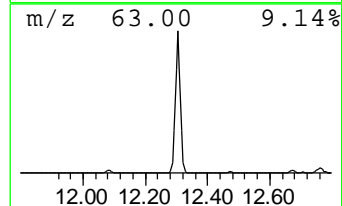
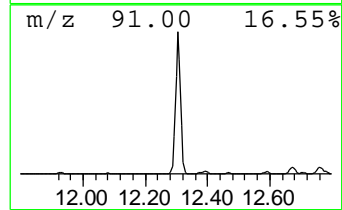
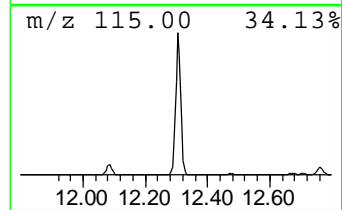
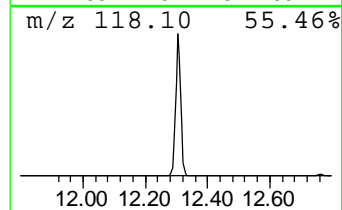
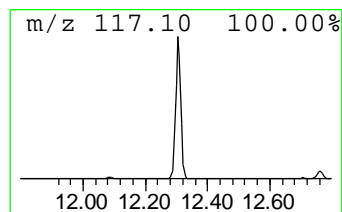
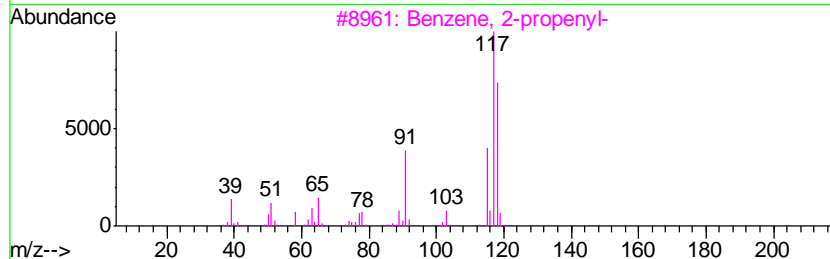
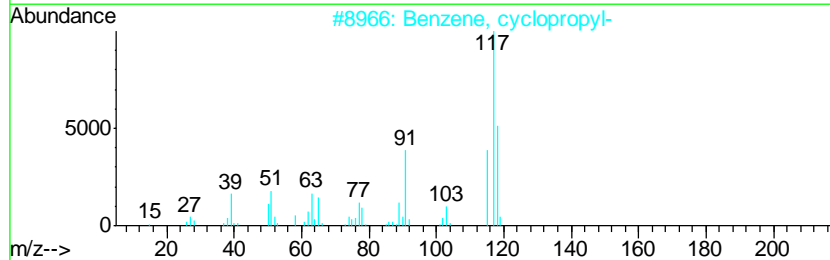
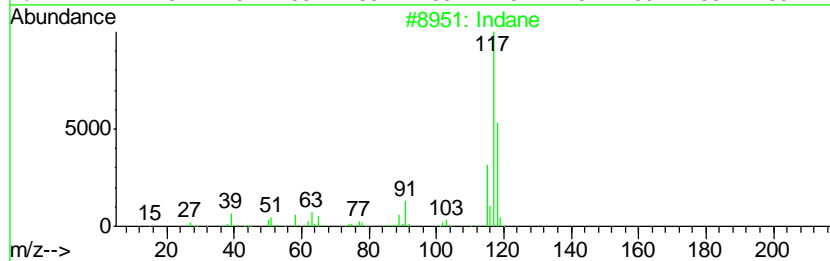
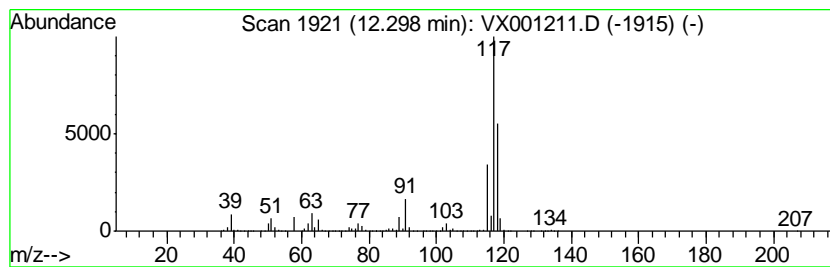
Quant Method : W:\HPCHEM1\MSVOA_X\METHOD\82X042618W.M
 Quant Title : SW846 8260

TIC Library : C:\DATABASE\NIST11.L
 TIC Integration Parameters: LSCINT.P

 Peak Number 2 Indane Concentration Rank 1

R.T.	EstConc	Area	Relative to ISTD	R.T.
12.30	507.32 ug/l	8256230	1,4-Dichlorobenzene-d4	12.09

Hit#	of	Tentative ID	MW	MolForm	CAS#	Qual
1	5	Indane	118	C9H10	000496-11-7	93
2		Benzene, cyclopropyl-	118	C9H10	000873-49-4	81
3		Benzene, 2-propenyl-	118	C9H10	000300-57-2	74
4		Deltacyclene	118	C9H10	007785-10-6	72
5		Tetracyclo[3.3.1.0(2,8).0(4,6)]-...	118	C9H10	1000191-13-7	64



Data Path : W:\HPCHEM1\MSVOA X\DATA\VX042818\
 Data File : VX001211.D
 Acq On : 28 Apr 2018 14:13
 Operator : JC/MD
 Sample : J2564-06
 Misc : 5.0mL/MSVOA X/WATER
 ALS Vial : 6 Sample Multiplier: 1

Instrument :
 MSVOA_X
 ClientSampled :
 LS-UB-102

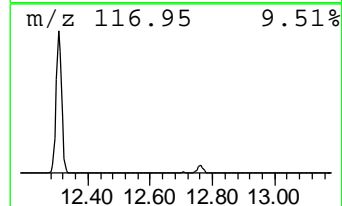
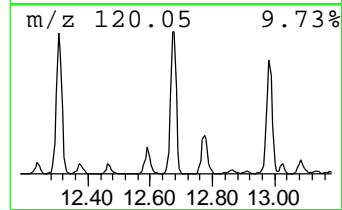
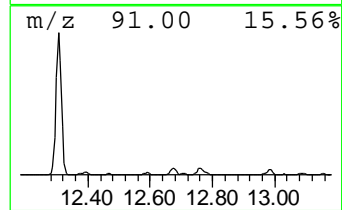
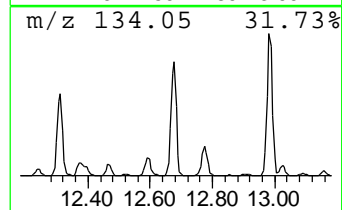
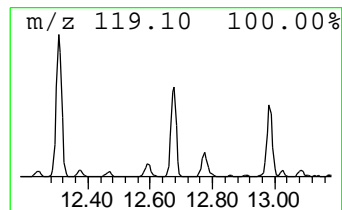
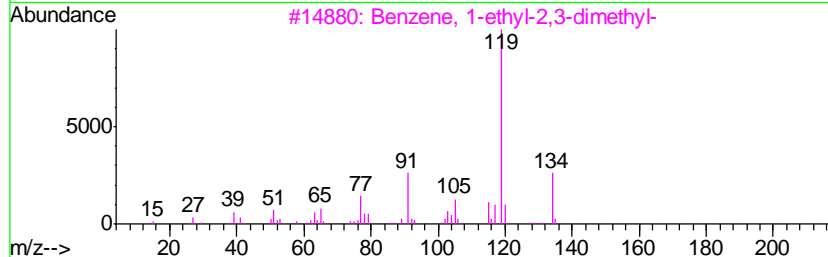
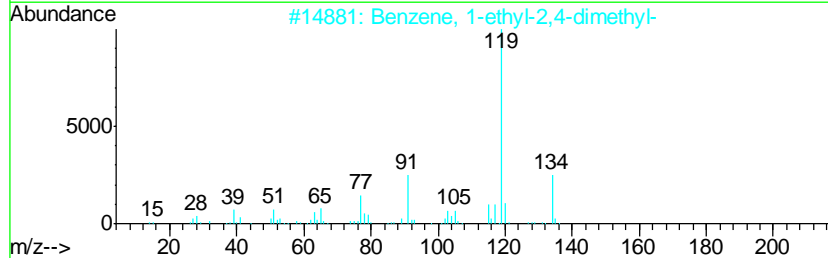
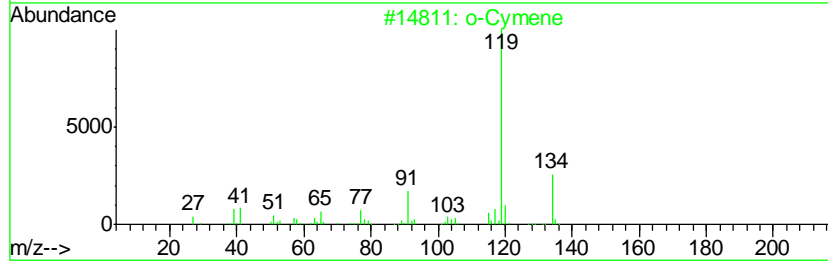
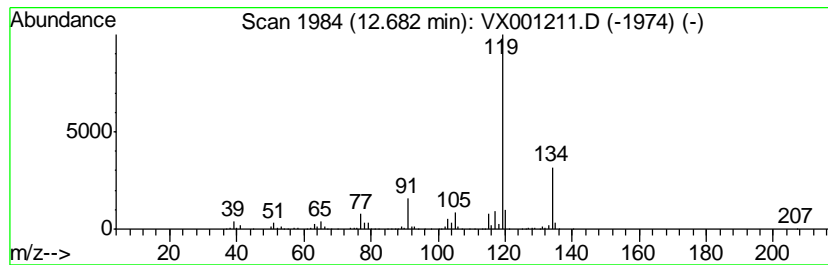
Quant Method : W:\HPCHEM1\MSVOA_X\METHOD\82X042618W.M
 Quant Title : SW846 8260

TIC Library : C:\DATABASE\NIST11.L
 TIC Integration Parameters: LSCINT.P

 Peak Number 3 o-Cymene Concentration Rank 9

R.T.	EstConc	Area	Relative to ISTD	R.T.
12.68	21.10 ug/l	343428	1,4-Dichlorobenzene-d4	12.09

Hit#	of	Tentative ID	MW	MolForm	CAS#	Qual
1	5	o-Cymene	134	C10H14	000527-84-4	97
2		Benzene, 1-ethyl-2,4-dimethyl-	134	C10H14	000874-41-9	95
3		Benzene, 1-ethyl-2,3-dimethyl-	134	C10H14	000933-98-2	95
4		Benzene, 2-ethyl-1,3-dimethyl-	134	C10H14	002870-04-4	95
5		p-Cymene	134	C10H14	000099-87-6	94



Data Path : W:\HPCHEM1\MSVOA X\DATA\VX042818\
 Data File : VX001211.D
 Acq On : 28 Apr 2018 14:13
 Operator : JC/MD
 Sample : J2564-06
 Misc : 5.0mL/MSVOA X/WATER
 ALS Vial : 6 Sample Multiplier: 1

Instrument :
 MSVOA_X
 Client Sampled :
 LS-UB-102

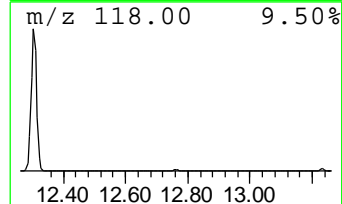
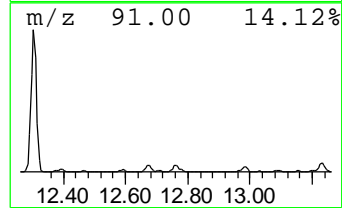
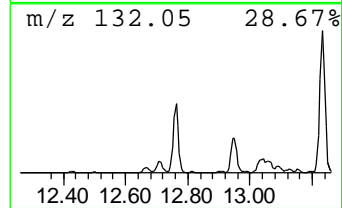
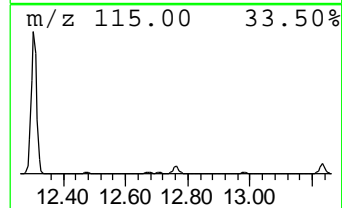
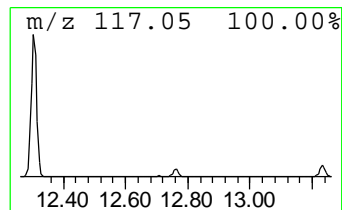
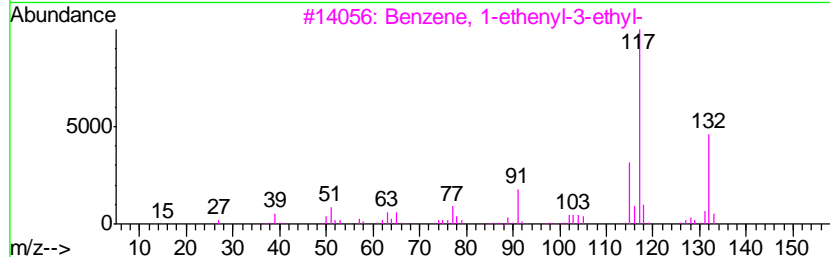
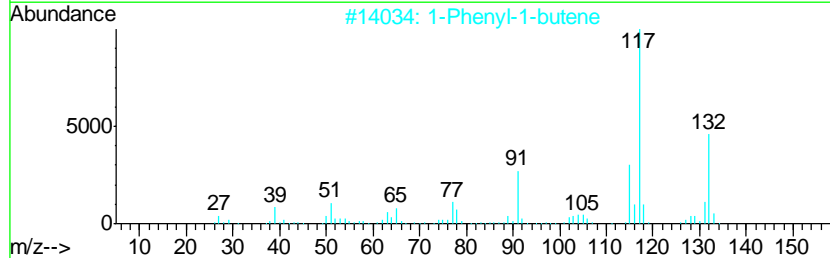
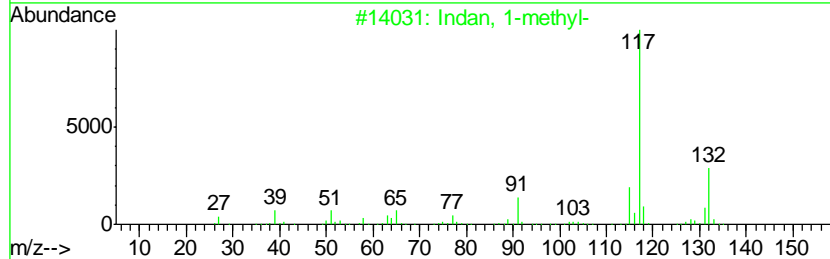
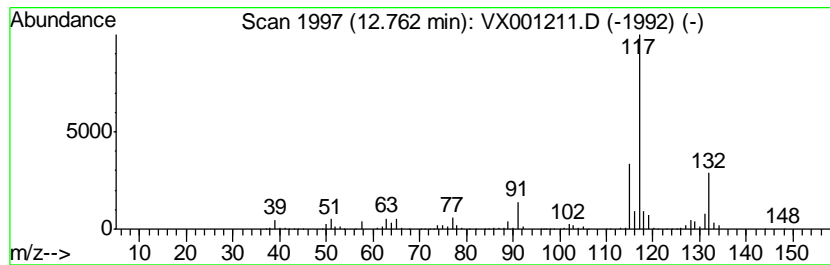
Quant Method : W:\HPCHEM1\MSVOA_X\METHOD\82X042618W.M
 Quant Title : SW846 8260

TIC Library : C:\DATABASE\NIST11.L
 TIC Integration Parameters: LSCINT.P

 Peak Number 4 Indan, 1-methyl- Concentration Rank 6

R.T.	EstConc	Area	Relative to ISTD	R.T.
12.76	31.96 ug/l	520135	1,4-Dichlorobenzene-d4	12.09

Hit#	of	Tentative ID	MW	MolForm	CAS#	Qual
1	5	Indan, 1-methyl-	132	C10H12	000767-58-8	87
2		1-Phenyl-1-butene	132	C10H12	000824-90-8	87
3		Benzene, 1-ethenyl-3-ethyl-	132	C10H12	007525-62-4	87
4		Benzene, 1-ethenyl-4-ethyl-	132	C10H12	003454-07-7	87
5		Benzene, (2-methyl-2-propenyl)-	132	C10H12	003290-53-7	86



Data Path : W:\HPCHEM1\MSVOA X\DATA\VX042818\
 Data File : VX001211.D
 Acq On : 28 Apr 2018 14:13
 Operator : JC/MD
 Sample : J2564-06
 Misc : 5.0mL/MSVOA X/WATER
 ALS Vial : 6 Sample Multiplier: 1

Instrument :
 MSVOA_X
 ClientSampleID :
 LS-UB-102

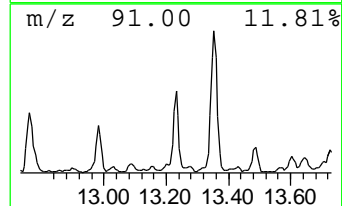
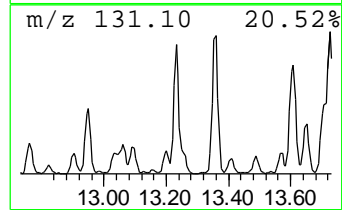
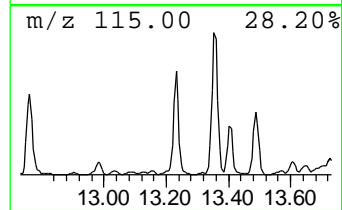
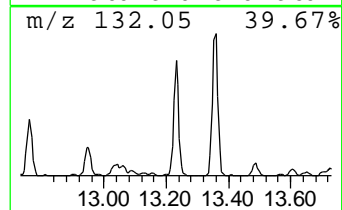
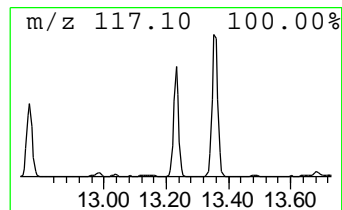
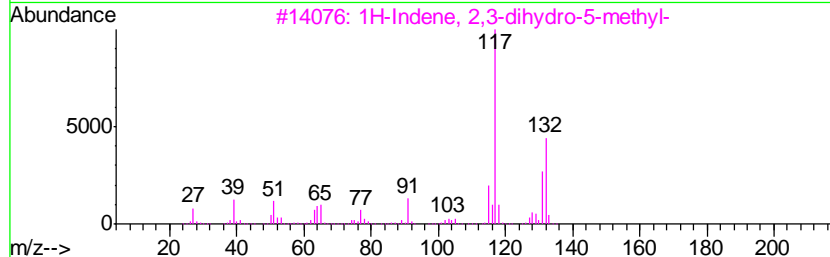
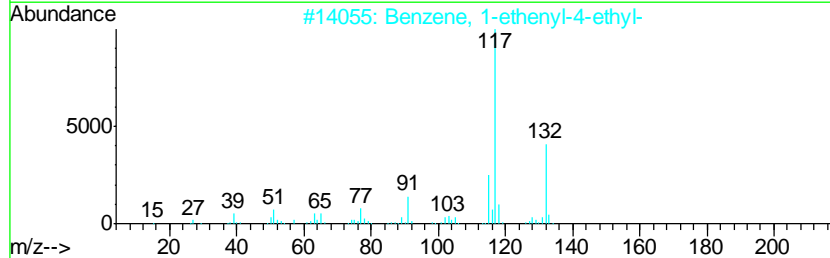
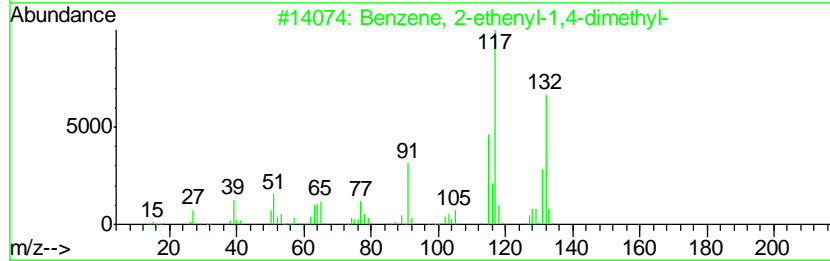
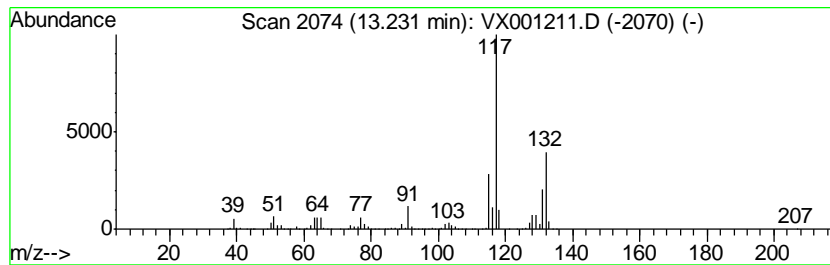
Quant Method : W:\HPCHEM1\MSVOA_X\METHOD\82X042618W.M
 Quant Title : SW846 8260

TIC Library : C:\DATABASE\NIST11.L
 TIC Integration Parameters: LSCINT.P

 Peak Number 5 Benzene, 2-ethenyl-1,4-dime... Concentration Rank 5

R.T.	EstConc	Area	Relative to ISTD	R.T.
13.23	45.42 ug/l	739239	1,4-Dichlorobenzene-d4	12.09

Hit#	of	Tentative ID	MW	MolForm	CAS#	Qual
1	5	Benzene, 2-ethenyl-1,4-dimethyl-	132	C10H12	002039-89-6	96
2		Benzene, 1-ethenyl-4-ethyl-	132	C10H12	003454-07-7	94
3		1H-Indene, 2,3-dihydro-5-methyl-	132	C10H12	000874-35-1	93
4		Benzene, 1-ethenyl-3-ethyl-	132	C10H12	007525-62-4	90
5		3-Phenylbut-1-ene	132	C10H12	000934-10-1	90



Data Path : W:\HPCHEM1\MSVOA X\DATA\VX042818\
 Data File : VX001211.D
 Acq On : 28 Apr 2018 14:13
 Operator : JC/MD
 Sample : J2564-06
 Misc : 5.0mL/MSVOA X/WATER
 ALS Vial : 6 Sample Multiplier: 1

Instrument :
 MSVOA_X
 Client Sampled :
 LS-UB-102

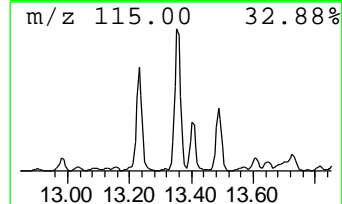
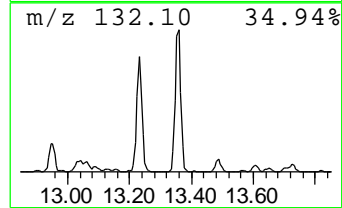
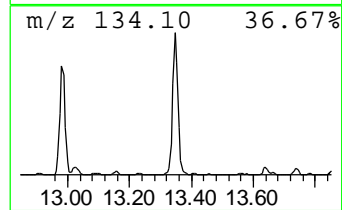
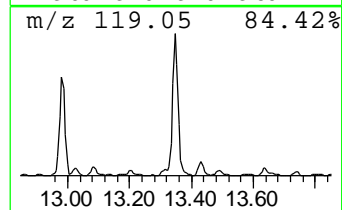
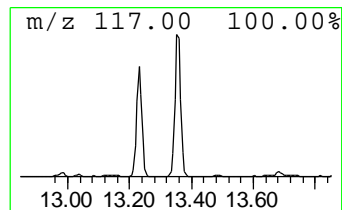
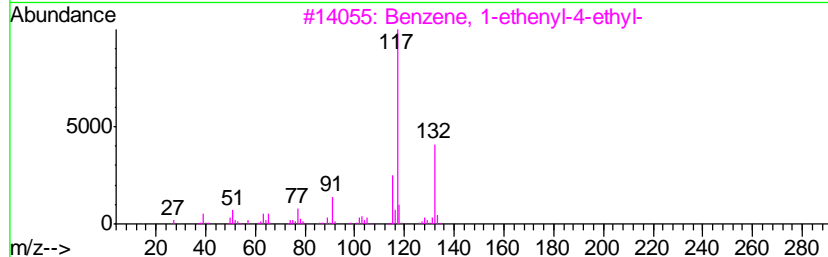
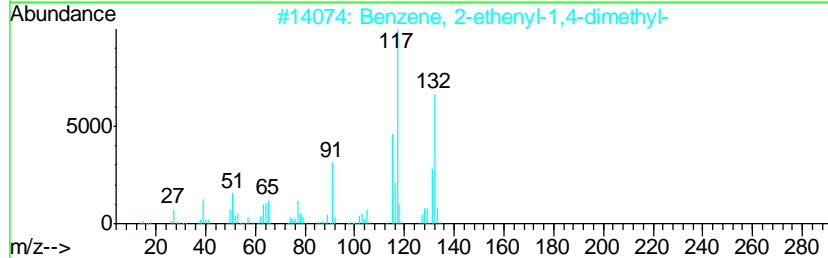
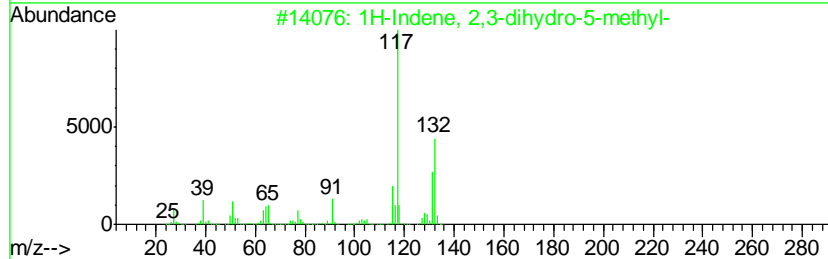
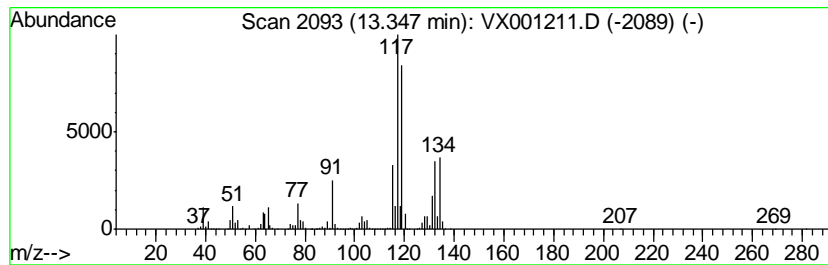
Quant Method : W:\HPCHEM1\MSVOA_X\METHOD\82X042618W.M
 Quant Title : SW846 8260

TIC Library : C:\DATABASE\NIST11.L
 TIC Integration Parameters: LSCINT.P

 Peak Number 6 1H-Indene, 2,3-dihydro-5-me... Concentration Rank 3

R.T.	EstConc	Area	Relative to ISTD	R.T.
13.35	76.49 ug/l	1244770	1,4-Dichlorobenzene-d4	12.09

Hit#	of	Tentative ID	MW	MolForm	CAS#	Qual
1	5	1H-Indene, 2,3-dihydro-5-methyl-	132	C10H12	000874-35-1	95
2		Benzene, 2-ethenyl-1,4-dimethyl-	132	C10H12	002039-89-6	95
3		Benzene, 1-ethenyl-4-ethyl-	132	C10H12	003454-07-7	94
4		1H-Indene, 2,3-dihydro-4-methyl-	132	C10H12	000824-22-6	93
5		Benzene, 2-butenyl-	132	C10H12	001560-06-1	87



Data Path : W:\HPCHEM1\MSVOA X\DATA\VX042818\
 Data File : VX001211.D
 Acq On : 28 Apr 2018 14:13
 Operator : JC/MD
 Sample : J2564-06
 Misc : 5.0mL/MSVOA X/WATER
 ALS Vial : 6 Sample Multiplier: 1

Instrument :
 MSVOA_X
 Client Sampled :
 LS-UB-102

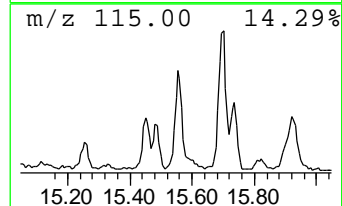
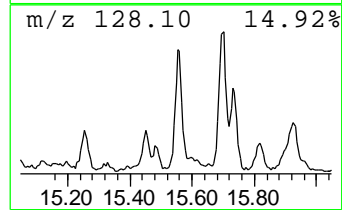
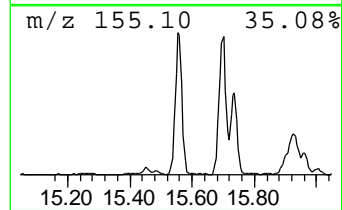
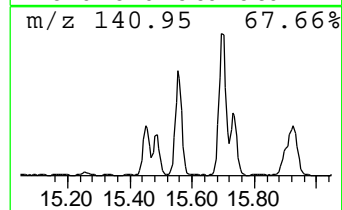
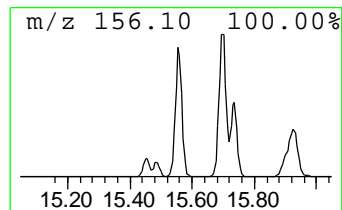
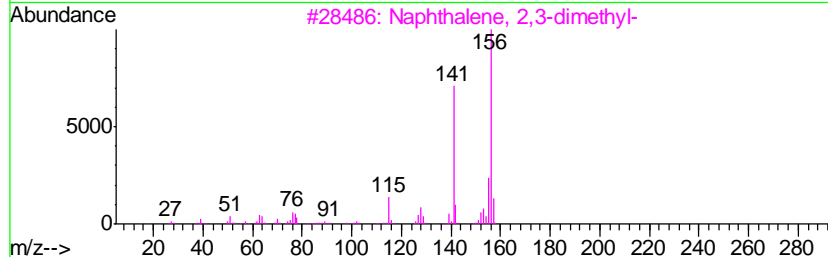
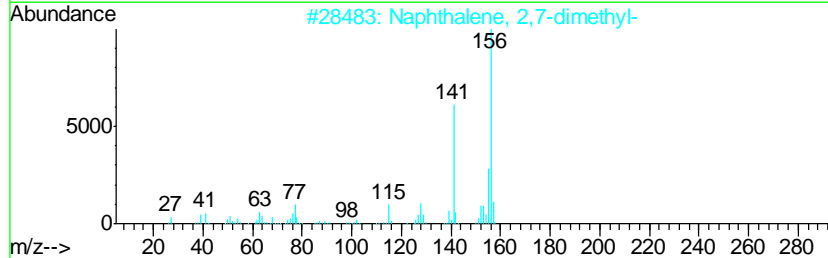
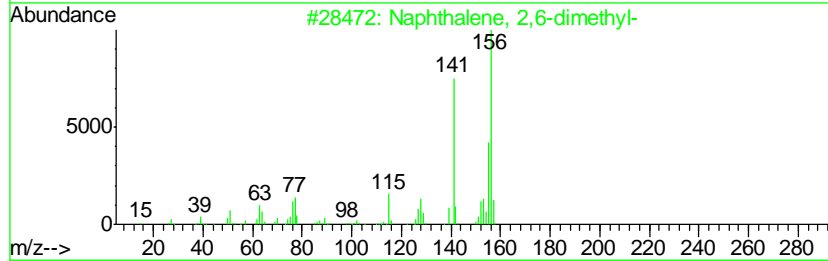
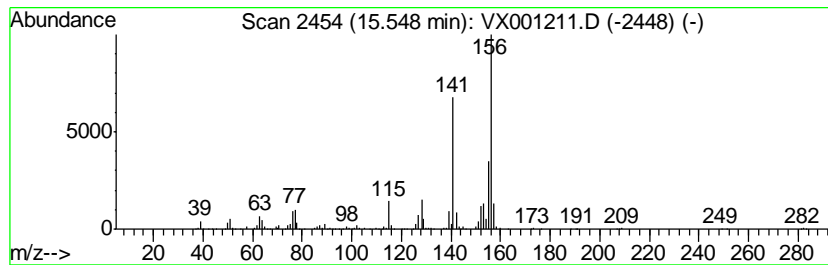
Quant Method : W:\HPCHEM1\MSVOA_X\METHOD\82X042618W.M
 Quant Title : SW846 8260

TIC Library : C:\DATABASE\NIST11.L
 TIC Integration Parameters: LSCINT.P

 Peak Number 9 Naphthalene, 2,6-dimethyl- Concentration Rank 8

R.T.	EstConc	Area	Relative to ISTD	R.T.
15.55	22.50 ug/l	366252	1,4-Dichlorobenzene-d4	12.09

Hit#	of	Tentative ID	MW	MolForm	CAS#	Qual
1	5	Naphthalene, 2,6-dimethyl-	156	C12H12	000581-42-0	97
2		Naphthalene, 2,7-dimethyl-	156	C12H12	000582-16-1	97
3		Naphthalene, 2,3-dimethyl-	156	C12H12	000581-40-8	97
4		Naphthalene, 1,6-dimethyl-	156	C12H12	000575-43-9	96
5		Naphthalene, 1,7-dimethyl-	156	C12H12	000575-37-1	96



Data Path : W:\HPCHEM1\MSVOA X\DATA\VX042818\
 Data File : VX001211.D
 Acq On : 28 Apr 2018 14:13
 Operator : JC/MD
 Sample : J2564-06
 Misc : 5.0mL/MSVOA X/WATER
 ALS Vial : 6 Sample Multiplier: 1

Instrument :
 MSVOA_X
 ClientSampleID :
 LS-UB-102

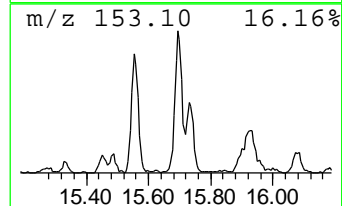
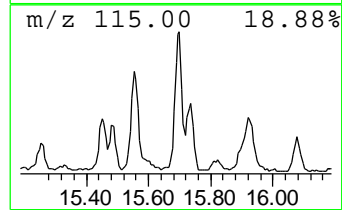
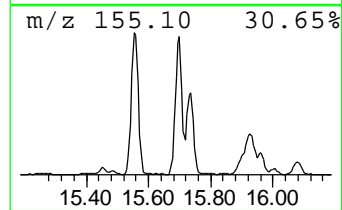
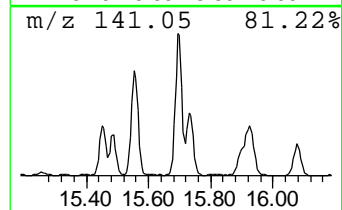
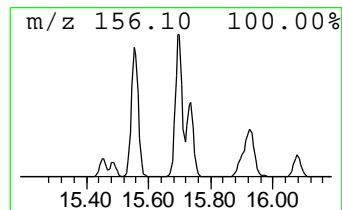
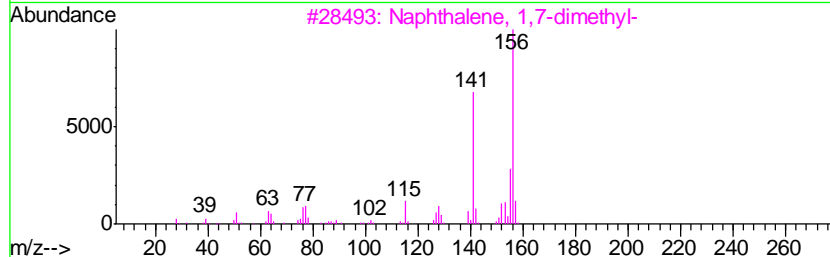
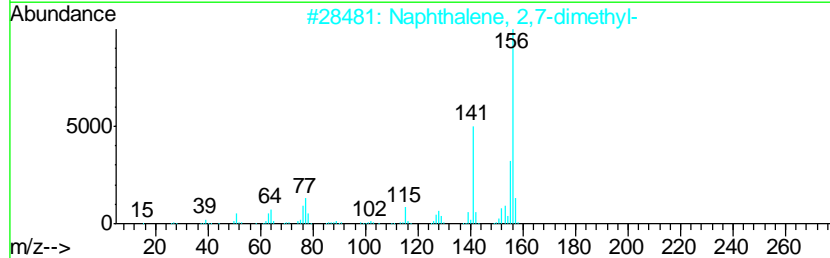
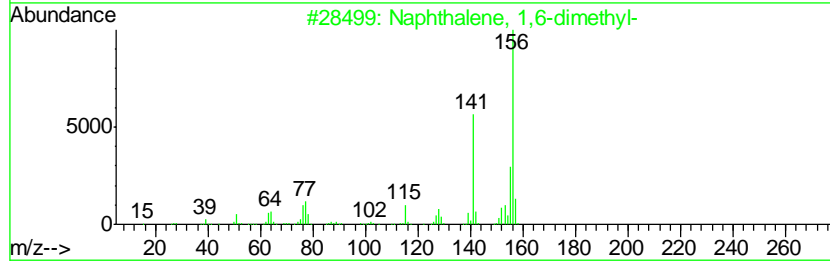
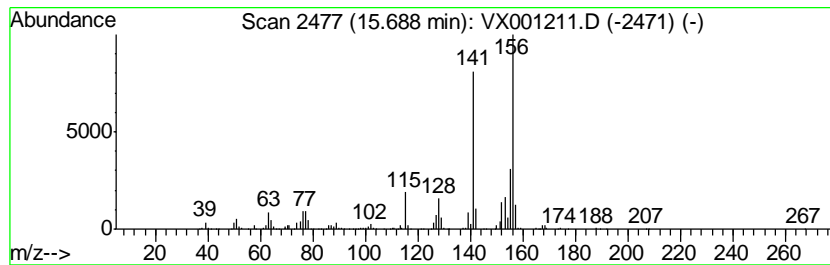
Quant Method : W:\HPCHEM1\MSVOA_X\METHOD\82X042618W.M
 Quant Title : SW846 8260

TIC Library : C:\DATABASE\NIST11.L
 TIC Integration Parameters: LSCINT.P

 Peak Number 10 Naphthalene, 1,6-dimethyl- Concentration Rank 7

R.T.	EstConc	Area	Relative to ISTD	R.T.
15.69	26.93 ug/l	438330	1,4-Dichlorobenzene-d4	12.09

Hit#	of	Tentative ID	MW	MolForm	CAS#	Qual
1	5	Naphthalene, 1,6-dimethyl-	156	C12H12	000575-43-9	97
2		Naphthalene, 2,7-dimethyl-	156	C12H12	000582-16-1	97
3		Naphthalene, 1,7-dimethyl-	156	C12H12	000575-37-1	97
4		Naphthalene, 1,5-dimethyl-	156	C12H12	000571-61-9	97
5		Naphthalene, 2,6-dimethyl-	156	C12H12	000581-42-0	97



Data Path : W:\HPCHEM1\MSVOA_X\DATA\VX042818\
Data File : VX001211.D
Acq On : 28 Apr 2018 14:13
Operator : JC/MD
Sample : J2564-06
Misc : 5.0mL/MSVOA_X/WATER
ALS Vial : 6 Sample Multiplier: 1

Instrument :
MSVOA_X
ClientSampleId :
LS-UB-102

Quant Method : W:\HPCHEM1\MSVOA_X\METHOD\82X042618W.M
Quant Title : SW846 8260

TIC Library : C:\DATABASE\NIST11.L
TIC Integration Parameters: LSCINT.P

TIC Top Hit name	RT	EstConc	Units	Response	--Internal Standard--			
					#	RT	Resp	Conc
Indane	12.30	507.3	ug/l	8256230	4	12.09	813719	50.0
o-Cymene	12.68	21.1	ug/l	343428	4	12.09	813719	50.0
Indan, 1-methyl-	12.76	32.0	ug/l	520135	4	12.09	813719	50.0
Benzene, 2-etheny...	13.23	45.4	ug/l	739239	4	12.09	813719	50.0
1H-Indene, 2,3-di...	13.35	76.5	ug/l	1244770	4	12.09	813719	50.0
Naphthalene, 2,6-...	15.55	22.5	ug/l	366252	4	12.09	813719	50.0
Naphthalene, 1,6-...	15.69	26.9	ug/l	438330	4	12.09	813719	50.0