

Data Path : W:\HPCHEM1\MSVOA\_X\DATA\VX050618\  
 Data File : VX001445.D  
 Acq On : 06 May 2018 15:44  
 Operator : JC/MD  
 Sample : J2659-08  
 Misc : 5.0mL/MSVOA\_X/WATER  
 ALS Vial : 10 Sample Multiplier: 1

Instrument :  
 MSVOA\_X  
 ClientSampleId :  
 BPS1-TT-MW302D-20180428

Quant Time: May 07 07:09:47 2018  
 Quant Method : W:\HPCHEM1\MSVOA\_X\METHOD\82X050518W.M  
 Quant Title : SW846 8260  
 QLast Update : Sun May 06 07:59:25 2018  
 Response via : Initial Calibration

| Internal Standards         | R.T.  | QIon | Response | Conc  | Units | Dev(Min) |
|----------------------------|-------|------|----------|-------|-------|----------|
| 1) Pentafluorobenzene      | 5.67  | 168  | 290315   | 50.00 | ug/l  | 0.00     |
| 34) 1,4-Difluorobenzene    | 6.87  | 114  | 405012   | 50.00 | ug/l  | 0.00     |
| 63) Chlorobenzene-d5       | 10.12 | 117  | 352908   | 50.00 | ug/l  | 0.00     |
| 72) 1,4-Dichlorobenzene-d4 | 12.09 | 152  | 198417   | 50.00 | ug/l  | 0.00     |

## System Monitoring Compounds

|                           |        |     |          |       |         |      |
|---------------------------|--------|-----|----------|-------|---------|------|
| 33) 1,2-Dichloroethane-d4 | 6.07   | 65  | 255716   | 61.28 | ug/l    | 0.00 |
| Spiked Amount             | 50.000 |     | Recovery | =     | 122.56% |      |
| 35) Dibromofluoromethane  | 5.51   | 113 | 197008   | 54.69 | ug/l    | 0.00 |
| Spiked Amount             | 50.000 |     | Recovery | =     | 109.38% |      |
| 50) Toluene-d8            | 8.72   | 98  | 679703   | 51.69 | ug/l    | 0.00 |
| Spiked Amount             | 50.000 |     | Recovery | =     | 103.38% |      |
| 62) 4-Bromofluorobenzene  | 11.14  | 95  | 228243   | 45.21 | ug/l    | 0.00 |
| Spiked Amount             | 50.000 |     | Recovery | =     | 90.42%  |      |

## Target Compounds

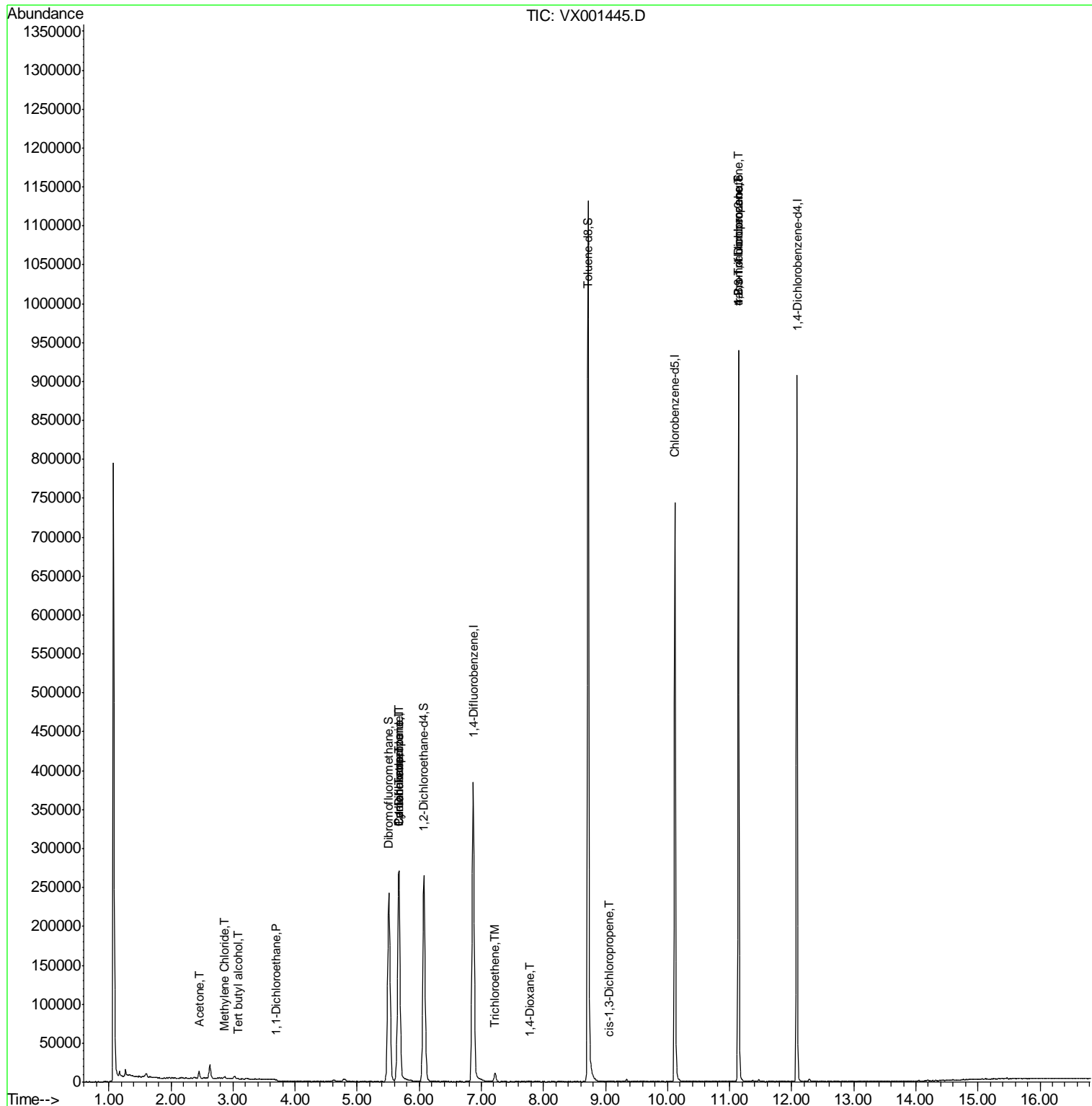
|                                |       |     |        |            |   | Qvalue |
|--------------------------------|-------|-----|--------|------------|---|--------|
| 5) Bromomethane                | 1.65  | 94  | 962    | Below Cal  |   | 97     |
| 11) Tert butyl alcohol         | 3.08  | 59  | 369    | 0.42 ug/l  | # | 72     |
| 13) Acrolein                   | 2.31  | 56  | 53     | Below Cal  | # | 61     |
| 16) Acetone                    | 2.45  | 43  | 9742   | 5.14 ug/l  |   | 100    |
| 20) Methylene Chloride         | 2.86  | 84  | 1359   | 0.36 ug/l  | # | 91     |
| 24) 1,1-Dichloroethane         | 3.70  | 63  | 1758   | 0.28 ug/l  | # | 93     |
| 31) Cyclohexane                | 5.67  | 56  | 5143   | 0.96 ug/l  | # | 9      |
| 36) 1,1-Dichloropropene        | 5.67  | 75  | 17770  | 3.45 ug/l  | # | 50     |
| 38) Carbon Tetrachloride       | 5.67  | 117 | 25036  | 4.56 ug/l  | # | 17     |
| 44) Trichloroethene            | 7.22  | 130 | 4739   | 1.03 ug/l  |   | 93     |
| 49) 1,4-Dioxane                | 7.77  | 88  | 333    | 3.27 ug/l  | # | 41     |
| 54) cis-1,3-Dichloropropene    | 9.05  | 75  | 25     | 2.27 ug/l  | # | 34     |
| 76) 1,2,3-Trichloropropane     | 11.14 | 75  | 116143 | 28.86 ug/l | # | 38     |
| 81) trans-1,4-Dichloro-2-buten | 11.14 | 75  | 116143 | 88.42 ug/l | # | 7      |

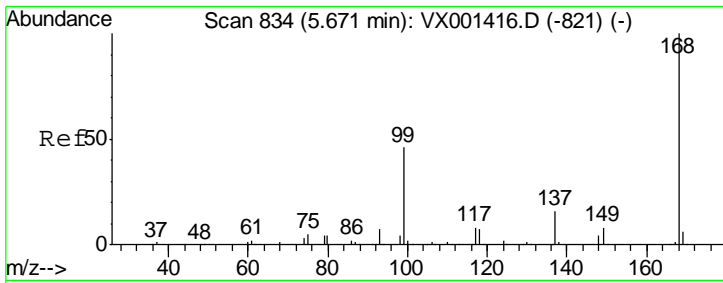
(#) = qualifier out of range (m) = manual integration (+) = signals summed

Data Path : W:\HPCHEM1\MSVOA\_X\DATA\VX050618\  
 Data File : VX001445.D  
 Acq On : 06 May 2018 15:44  
 Operator : JC/MD  
 Sample : J2659-08  
 Misc : 5.0mL/MSVOA\_X/WATER  
 ALS Vial : 10 Sample Multiplier: 1

Instrument :  
 MSVOA\_X  
 Client Sampled :  
 BPS1-TT-MW302D-20180428

Quant Time: May 07 07:09:47 2018  
 Quant Method : W:\HPCHEM1\MSVOA\_X\METHOD\82X050518W.M  
 Quant Title : SW846 8260  
 QLast Update : Sun May 06 07:59:25 2018  
 Response via : Initial Calibration

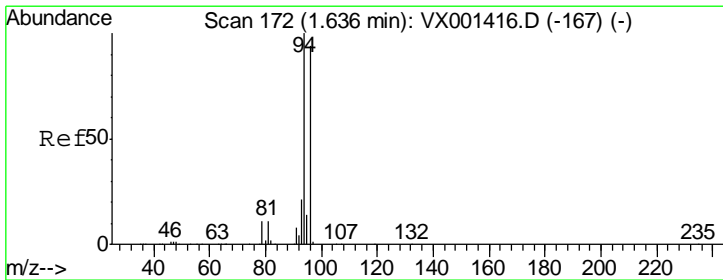
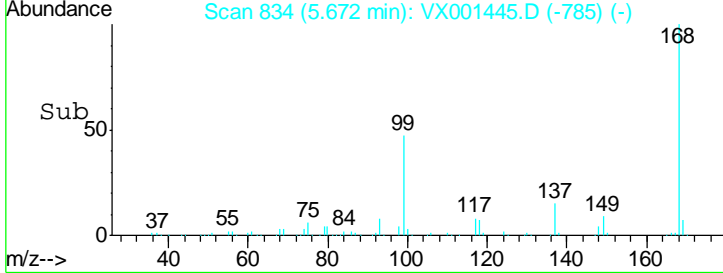
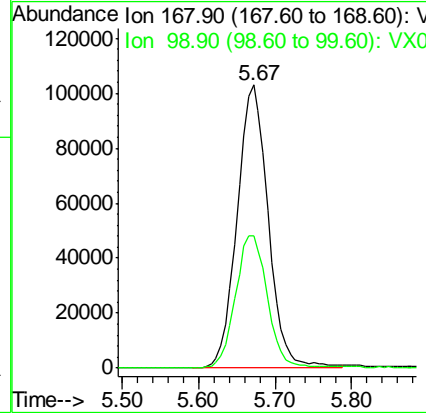
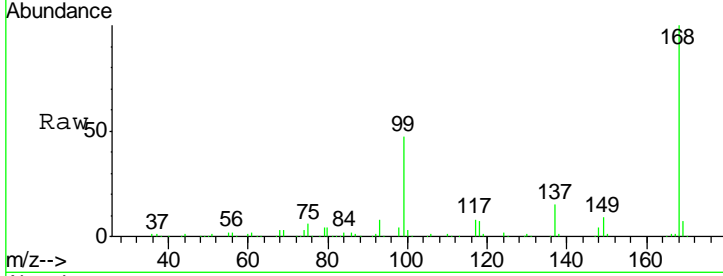




#1  
 Pentafluorobenzene  
 Concen: 50.00 ug/l  
 RT: 5.67 min Scan# 834  
 Delta R.T. 0.00 min  
 Lab File: VX001445.D  
 Acq: 06 May 2018 15:44

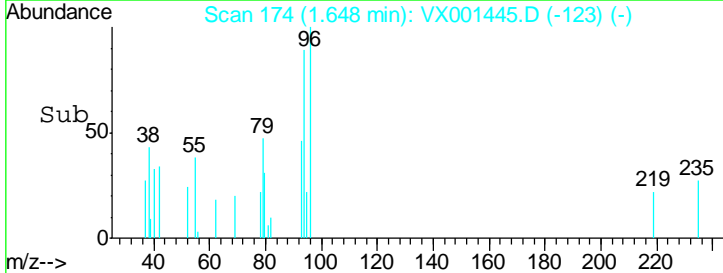
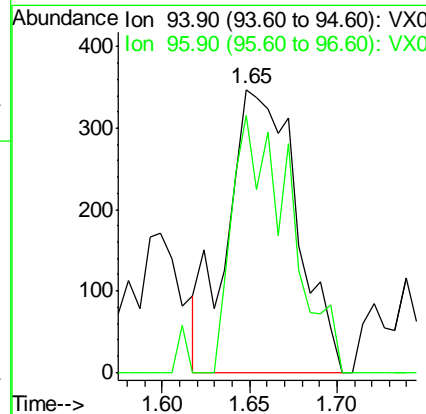
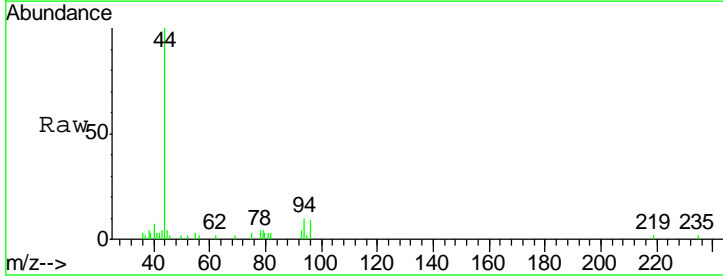
Instrument : MSVOA\_X  
 ClientSampleId : BPS1-TT-MW302D-20180428

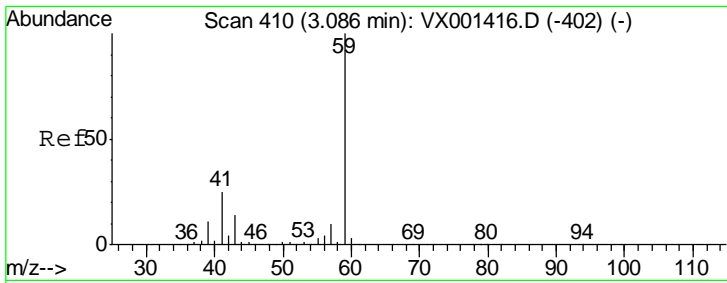
Tgt Ion: 168 Resp: 290315  
 Ion Ratio Lower Upper  
 168 100  
 99 46.7 36.6 54.8



#5  
 Bromomethane  
 Concen: Below Cal  
 RT: 1.65 min Scan# 174  
 Delta R.T. 0.01 min  
 Lab File: VX001445.D  
 Acq: 06 May 2018 15:44

Tgt Ion: 94 Resp: 962  
 Ion Ratio Lower Upper  
 94 100  
 96 90.8 75.0 112.6

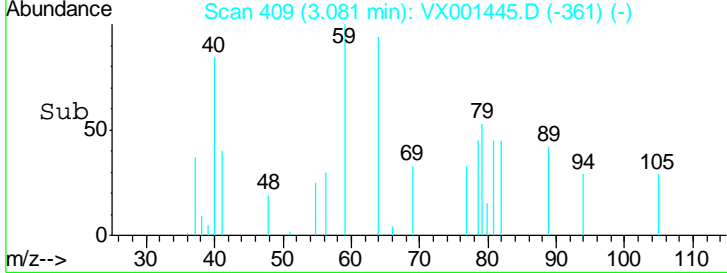
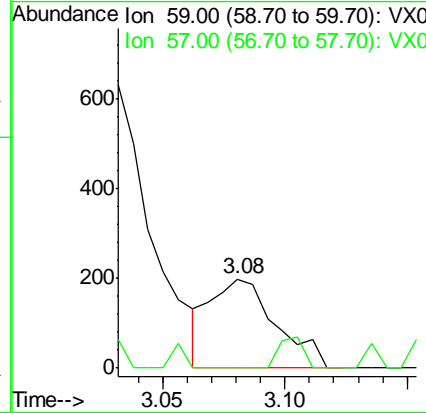
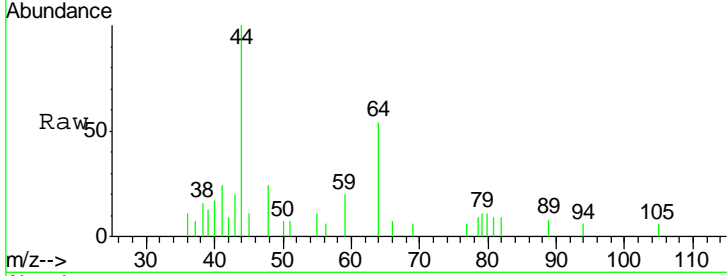




#11  
 Tert butyl alcohol  
 Concen: 0.42 ug/l  
 RT: 3.08 min Scan# 409  
 Delta R.T. -0.01 min  
 Lab File: VX001445.D  
 Acq: 06 May 2018 15:44

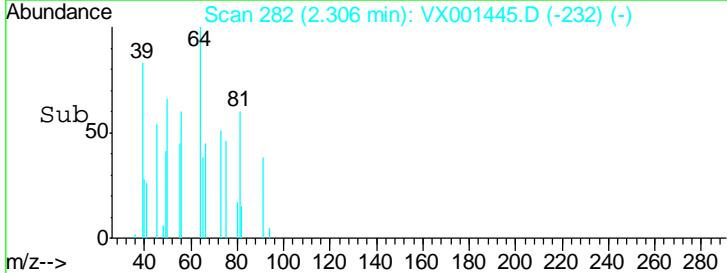
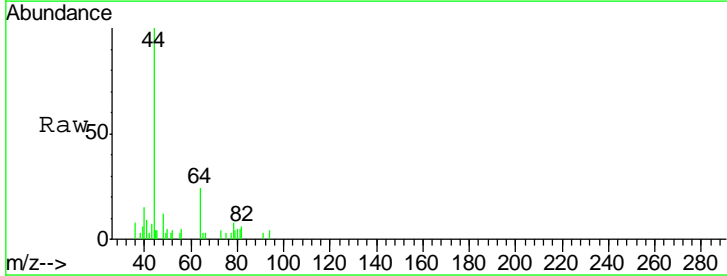
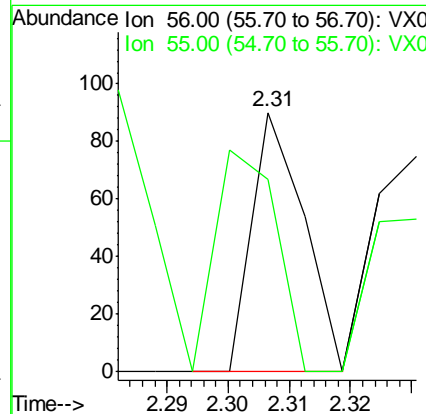
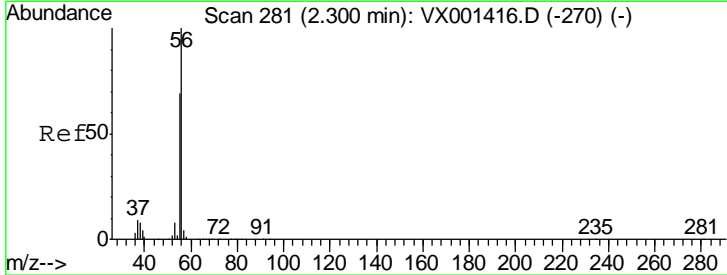
**Instrument :**  
 MSVOA\_X  
**ClientSampled :**  
 BPS1-TT-MW302D-20180428

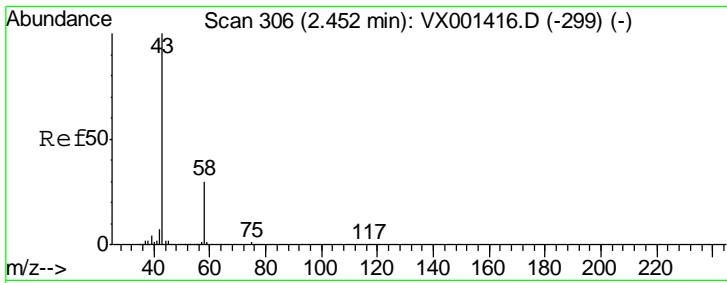
Tgt Ion: 59 Resp: 369  
 Ion Ratio Lower Upper  
 59 100  
 57 0.0 8.2 12.4#



#13  
 Acrolein  
 Concen: Below Cal  
 RT: 2.31 min Scan# 282  
 Delta R.T. 0.01 min  
 Lab File: VX001445.D  
 Acq: 06 May 2018 15:44

Tgt Ion: 56 Resp: 53  
 Ion Ratio Lower Upper  
 56 100  
 55 100.0 54.5 81.7#

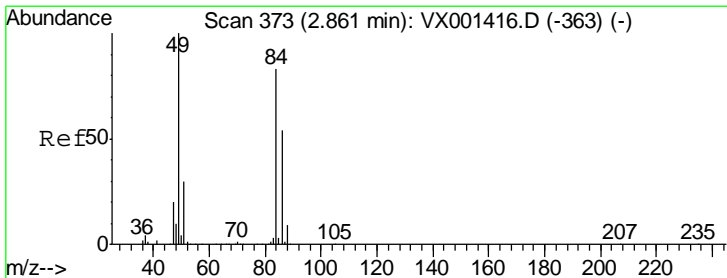
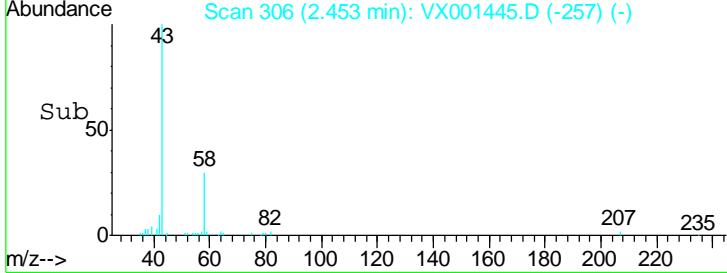
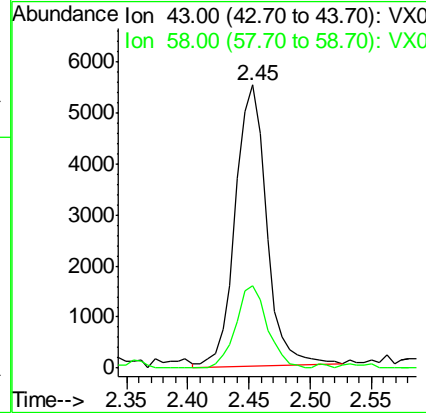
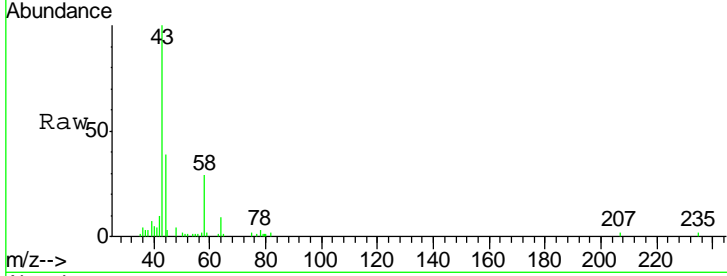




#16  
 Acetone  
 Concen: 5.14 ug/l  
 RT: 2.45 min Scan# 306  
 Delta R.T. 0.00 min  
 Lab File: VX001445.D  
 Acq: 06 May 2018 15:44

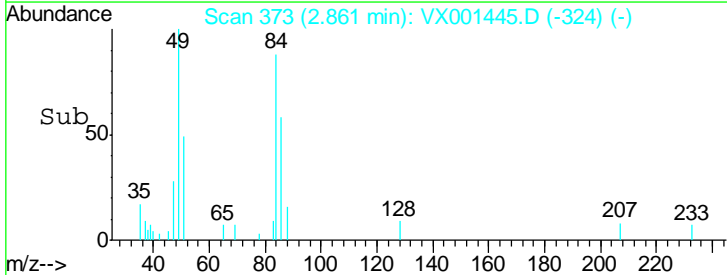
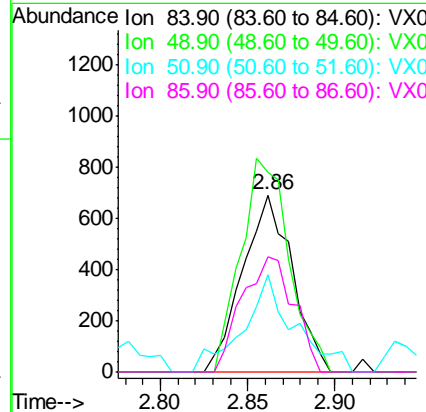
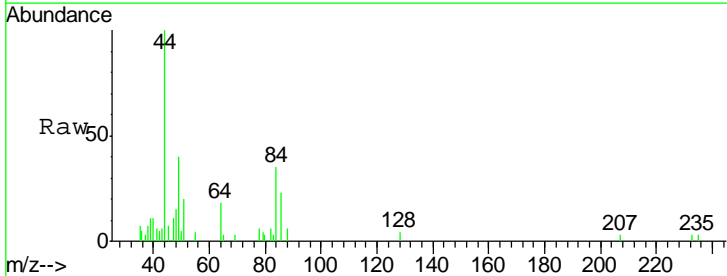
**Instrument :**  
 MSVOA\_X  
**ClientSampled :**  
 BPS1-TT-MW302D-20180428

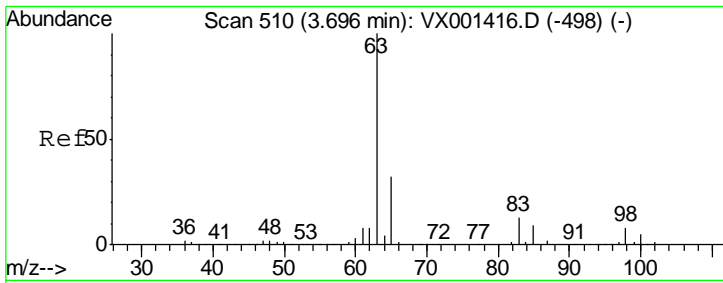
| Tgt Ion | Resp | Lower | Upper |
|---------|------|-------|-------|
| 43      | 9742 |       |       |
| 58      | 29.8 | 23.8  | 35.8  |



#20  
 Methylene Chloride  
 Concen: 0.36 ug/l  
 RT: 2.86 min Scan# 373  
 Delta R.T. 0.00 min  
 Lab File: VX001445.D  
 Acq: 06 May 2018 15:44

| Tgt Ion | Resp  | Lower | Upper |
|---------|-------|-------|-------|
| 84      | 1359  |       |       |
| 49      | 113.2 | 96.6  | 144.8 |
| 51      | 55.1  | 29.0  | 43.4# |
| 86      | 65.4  | 52.2  | 78.4  |

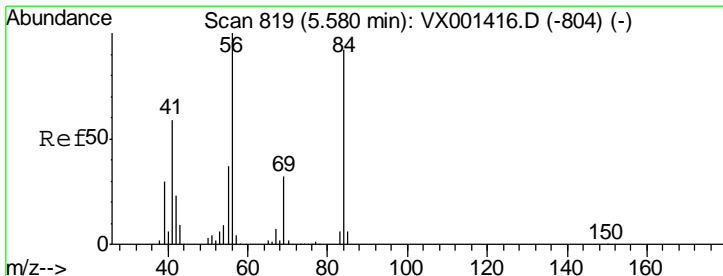
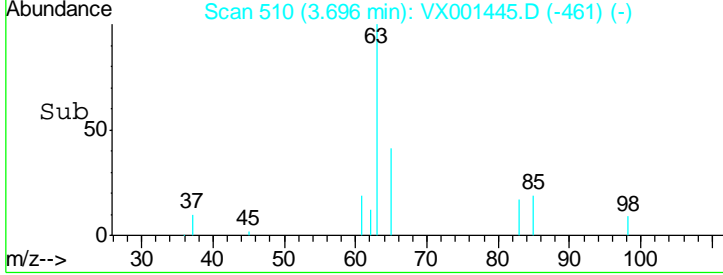
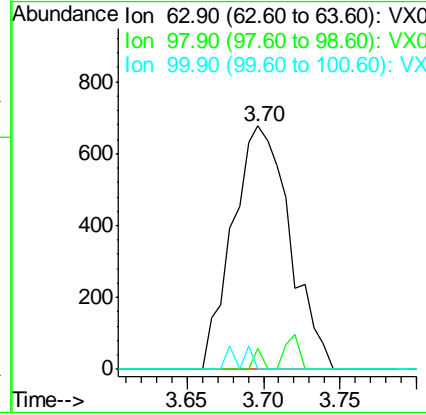
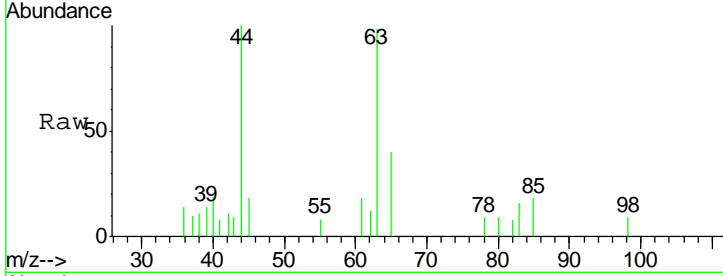




#24  
 1,1-Dichloroethane  
 Concen: 0.28 ug/l  
 RT: 3.70 min Scan# 510  
 Delta R.T. 0.00 min  
 Lab File: VX001445.D  
 Acq: 06 May 2018 15:44

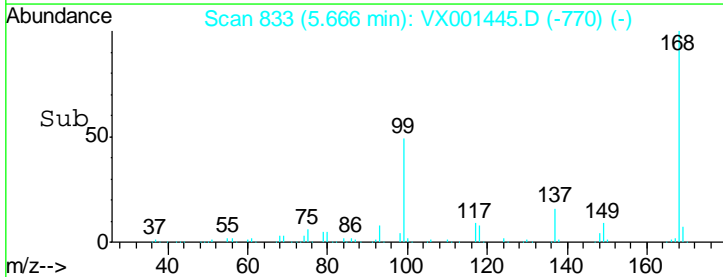
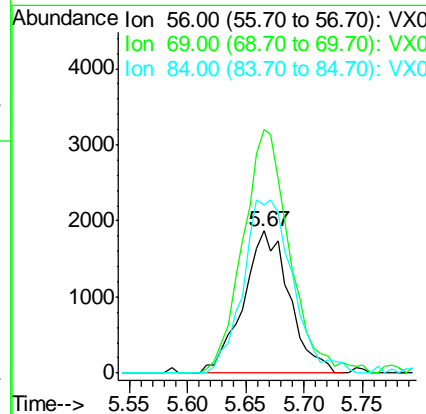
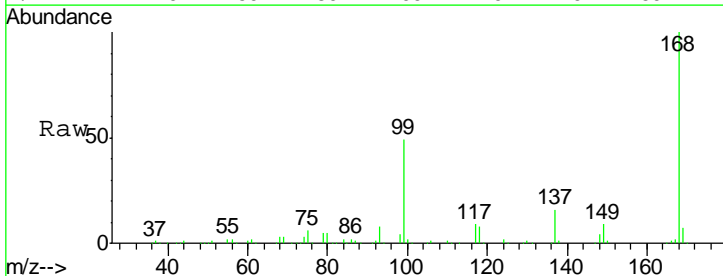
Instrument :  
 MSVOA\_X  
 ClientSampleId :  
 BPS1-TT-MW302D-20180428

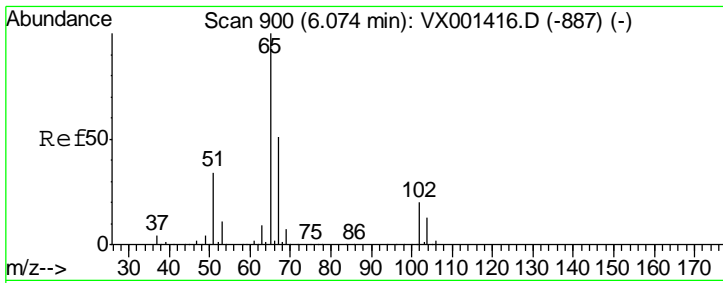
| Tgt Ion | Resp | Lower | Upper |
|---------|------|-------|-------|
| 63      | 1758 |       |       |
| 98      | 8.7  | 3.8   | 11.4  |
| 100     | 0.0  | 2.4   | 7.1#  |



#31  
 Cyclohexane  
 Concen: 0.96 ug/l  
 RT: 5.67 min Scan# 833  
 Delta R.T. 0.09 min  
 Lab File: VX001445.D  
 Acq: 06 May 2018 15:44

| Tgt Ion | Resp  | Lower | Upper  |
|---------|-------|-------|--------|
| 56      | 5143  |       |        |
| 69      | 171.0 | 25.4  | 38.0#  |
| 84      | 126.3 | 73.8  | 110.8# |

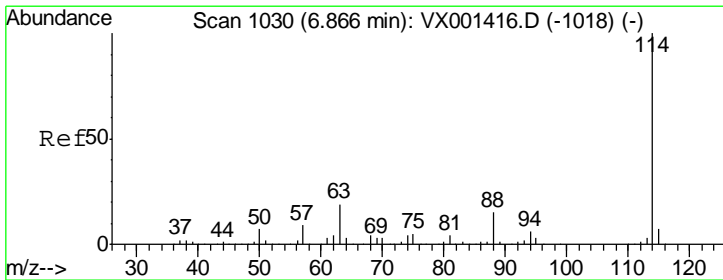
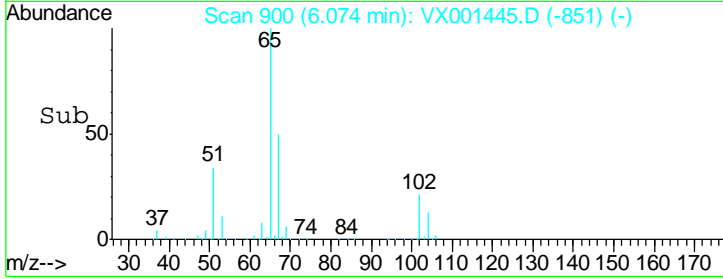
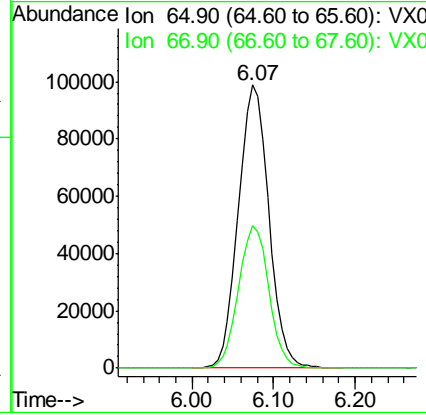
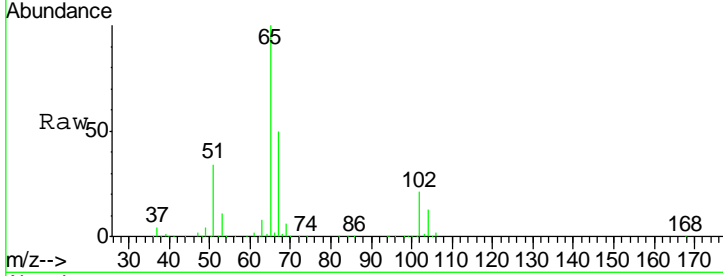




#33  
 1,2-Dichloroethane-d4  
 Concen: 61.28 ug/l  
 RT: 6.07 min Scan# 900  
 Delta R.T. 0.00 min  
 Lab File: VX001445.D  
 Acq: 06 May 2018 15:44

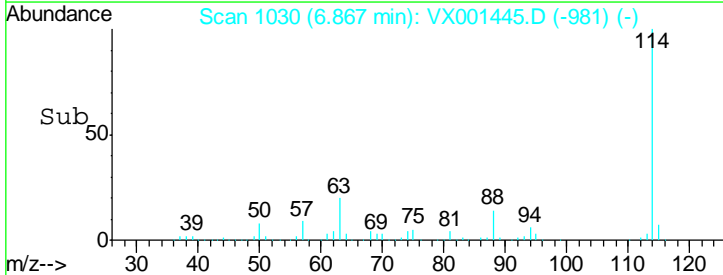
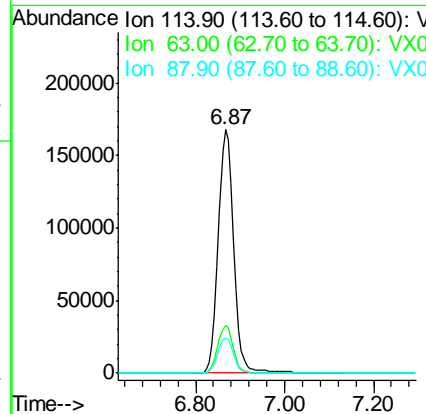
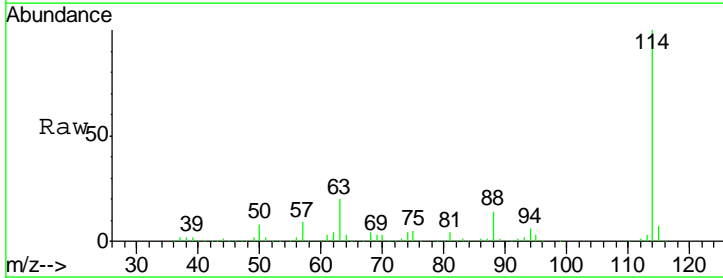
**Instrument :**  
 MSVOA\_X  
**ClientSampled :**  
 BPS1-TT-MW302D-20180428

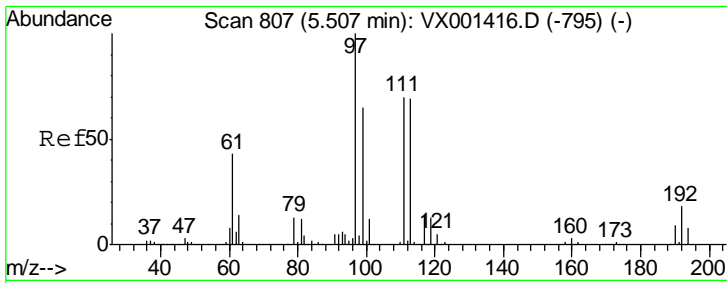
Tgt Ion: 65 Resp: 255716  
 Ion Ratio Lower Upper  
 65 100  
 67 50.4 0.0 101.8



#34  
 1,4-Difluorobenzene  
 Concen: 50.00 ug/l  
 RT: 6.87 min Scan# 1030  
 Delta R.T. 0.00 min  
 Lab File: VX001445.D  
 Acq: 06 May 2018 15:44

Tgt Ion: 114 Resp: 405012  
 Ion Ratio Lower Upper  
 114 100  
 63 19.8 0.0 38.6  
 88 14.5 0.0 30.8

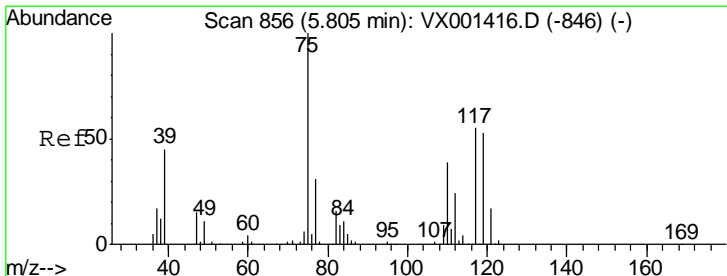
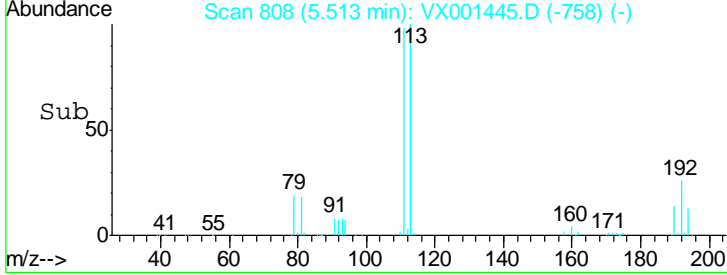
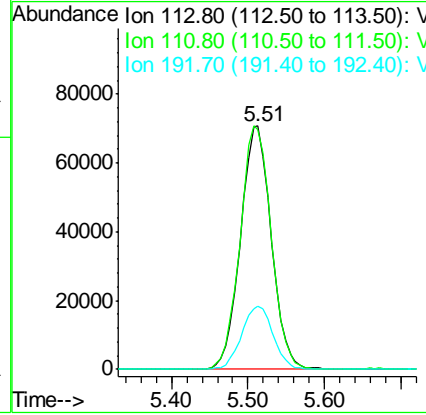
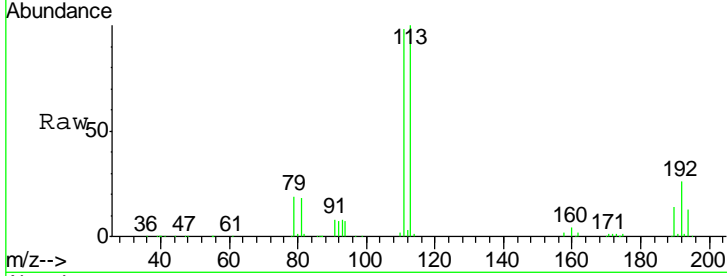




#35  
 Dibromofluoromethane  
 Concen: 54.69 ug/l  
 RT: 5.51 min Scan# 808  
 Delta R.T. 0.01 min  
 Lab File: VX001445.D  
 Acq: 06 May 2018 15:44

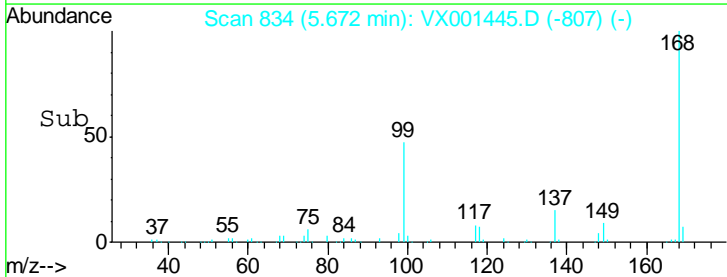
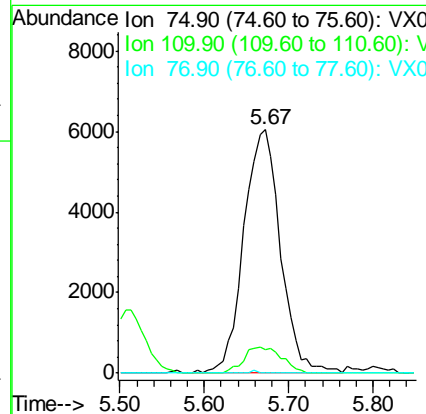
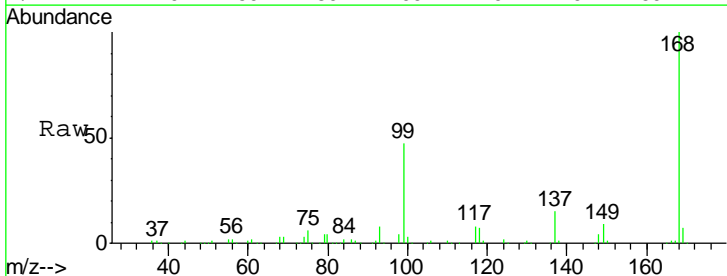
**Instrument :**  
 MSVOA\_X  
**ClientSampleId :**  
 BPS1-TT-MW302D-20180428

| Tgt Ion | Resp   | Lower | Upper |
|---------|--------|-------|-------|
| 113     | 197008 |       |       |
| 111     | 101.4  | 82.2  | 123.2 |
| 192     | 26.6   | 21.4  | 32.0  |

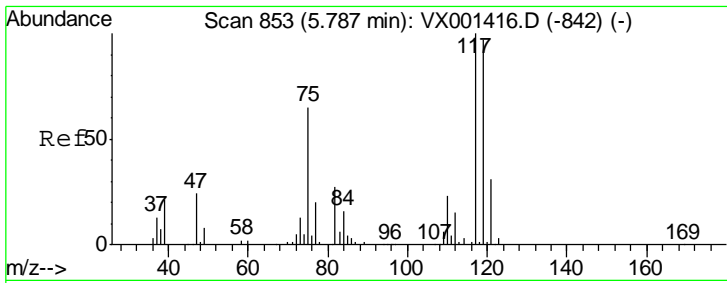


#36  
 1,1-Dichloropropene  
 Concen: 3.45 ug/l  
 RT: 5.67 min Scan# 834  
 Delta R.T. -0.13 min  
 Lab File: VX001445.D  
 Acq: 06 May 2018 15:44

| Tgt Ion | Resp  | Lower | Upper |
|---------|-------|-------|-------|
| 75      | 17770 |       |       |
| 110     | 11.1  | 18.9  | 56.7# |
| 77      | 0.2   | 24.9  | 37.3# |



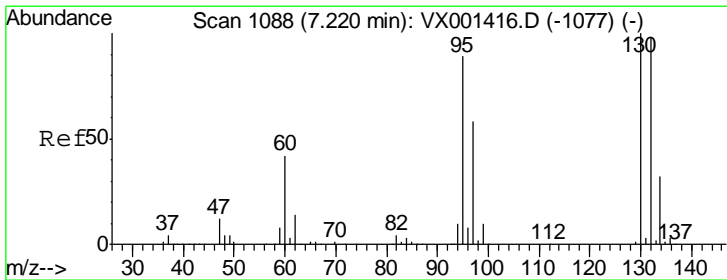
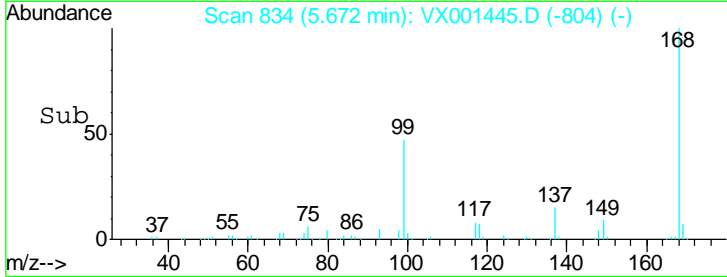
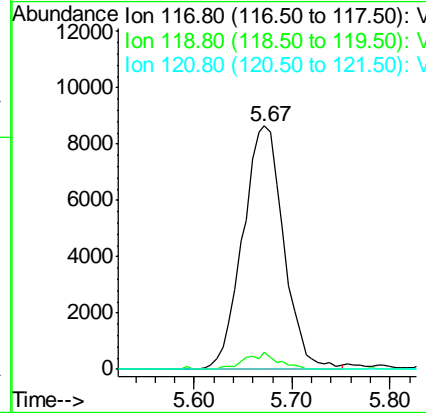
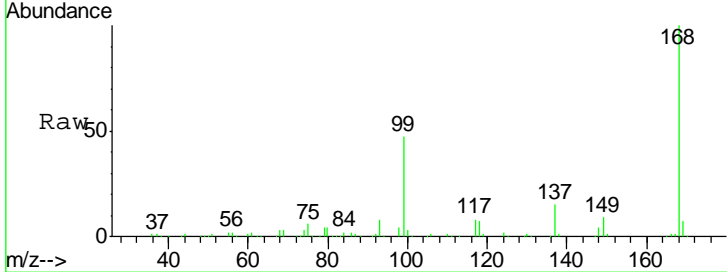




#38  
 Carbon Tetrachloride  
 Concen: 4.56 ug/l  
 RT: 5.67 min Scan# 834  
 Delta R.T. -0.12 min  
 Lab File: VX001445.D  
 Acq: 06 May 2018 15:44

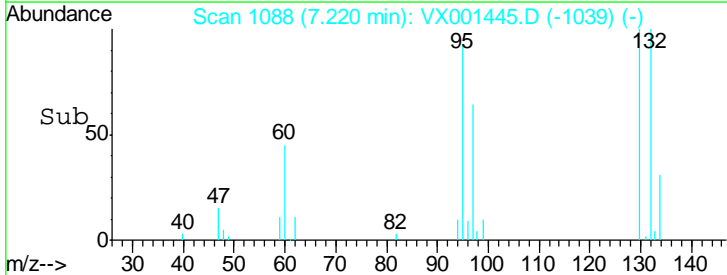
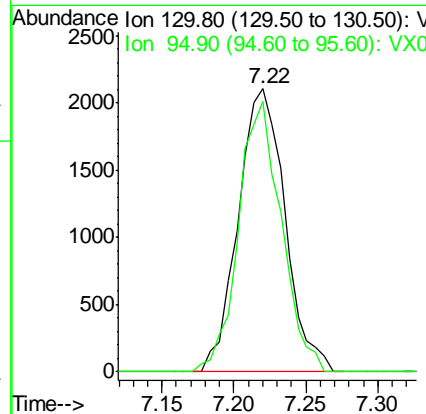
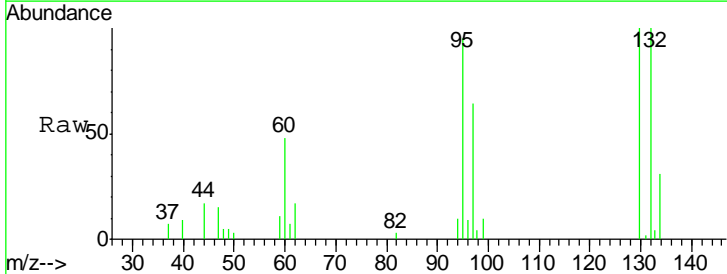
Instrument :  
 MSVOA\_X  
 ClientSampleId :  
 BPS1-TT-MW302D-20180428

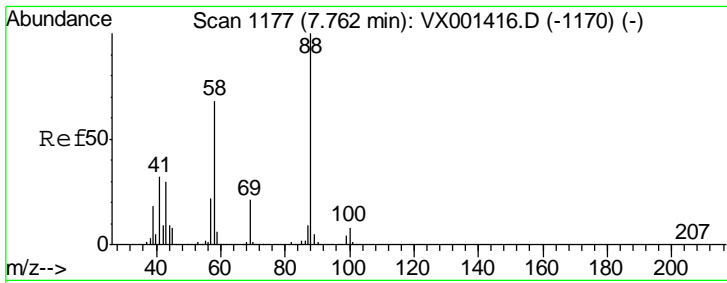
| Tgt Ion | Resp  | Lower | Upper  |
|---------|-------|-------|--------|
| 117     | 25036 |       |        |
| 119     | 7.0   | 77.0  | 115.6# |
| 121     | 0.0   | 25.1  | 37.7#  |



#44  
 Trichloroethene  
 Concen: 1.03 ug/l  
 RT: 7.22 min Scan# 1088  
 Delta R.T. 0.00 min  
 Lab File: VX001445.D  
 Acq: 06 May 2018 15:44

| Tgt Ion | Resp | Lower | Upper |
|---------|------|-------|-------|
| 130     | 4739 |       |       |
| 130     | 100  |       |       |
| 95      | 95.7 | 0.0   | 178.4 |

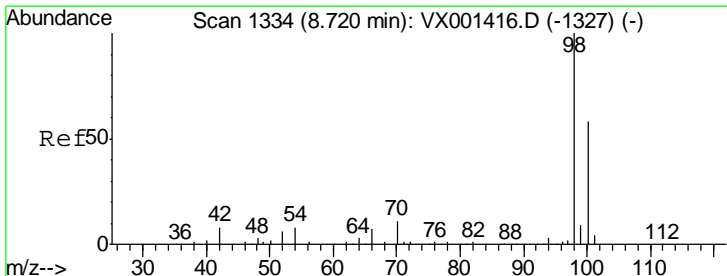
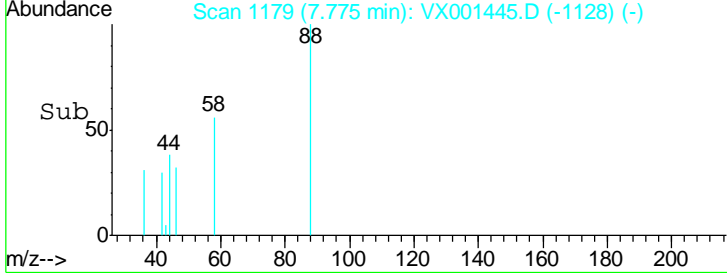
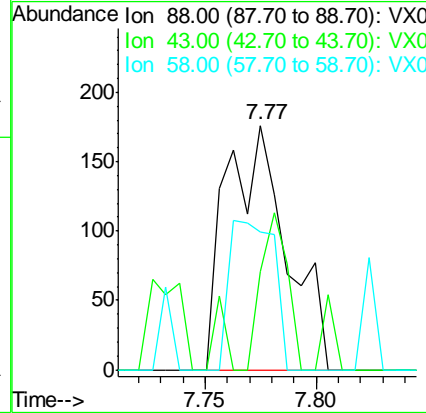
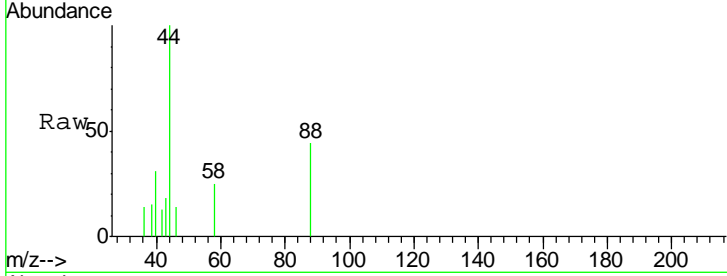




#49  
 1,4-Dioxane  
 Concen: 3.27 ug/l  
 RT: 7.77 min Scan# 1179  
 Delta R.T. 0.01 min  
 Lab File: VX001445.D  
 Acq: 06 May 2018 15:44

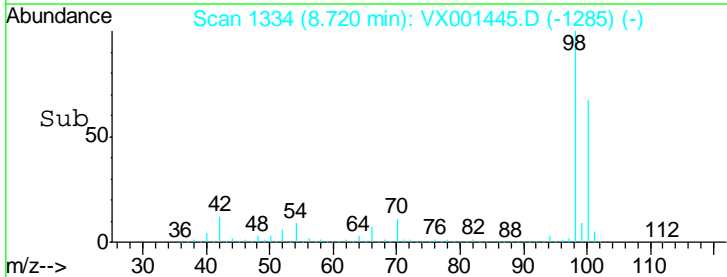
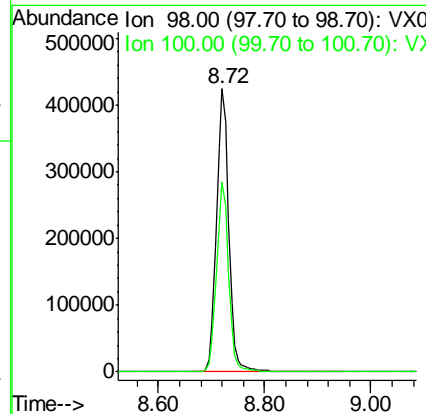
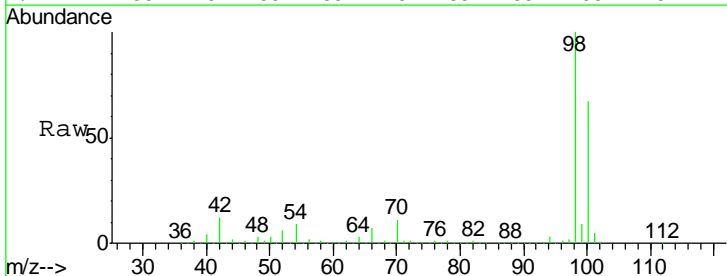
**Instrument :**  
 MSVOA\_X  
**ClientSampled :**  
 BPS1-TT-MW302D-20180428

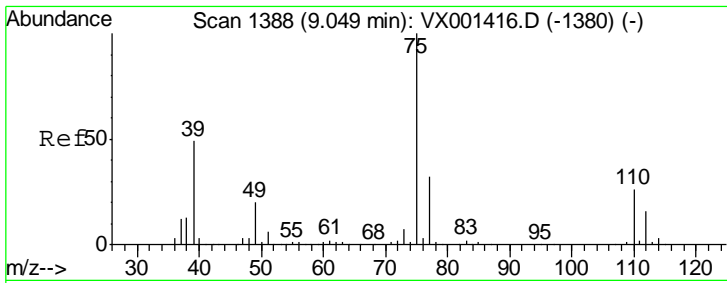
| Tgt Ion | Resp | Lower | Upper |
|---------|------|-------|-------|
| 88      | 100  |       |       |
| 43      | 28.5 | 26.4  | 39.6  |
| 58      | 0.0  | 54.1  | 81.1# |



#50  
 Toluene-d8  
 Concen: 51.69 ug/l  
 RT: 8.72 min Scan# 1334  
 Delta R.T. 0.00 min  
 Lab File: VX001445.D  
 Acq: 06 May 2018 15:44

| Tgt Ion | Resp | Lower | Upper |
|---------|------|-------|-------|
| 98      | 100  |       |       |
| 100     | 66.1 | 54.0  | 81.0  |

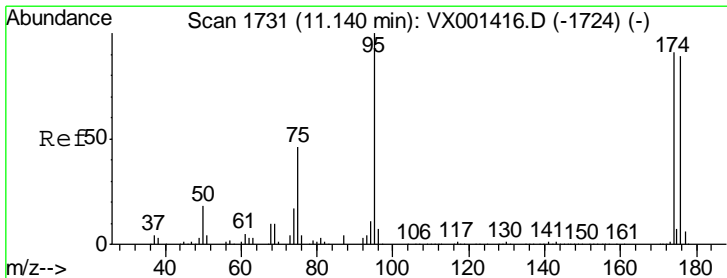
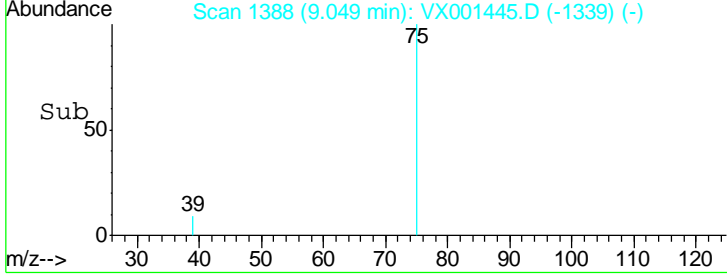
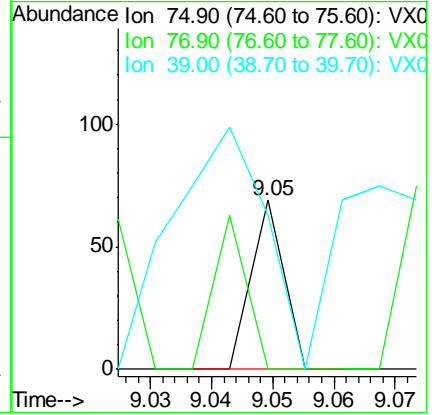
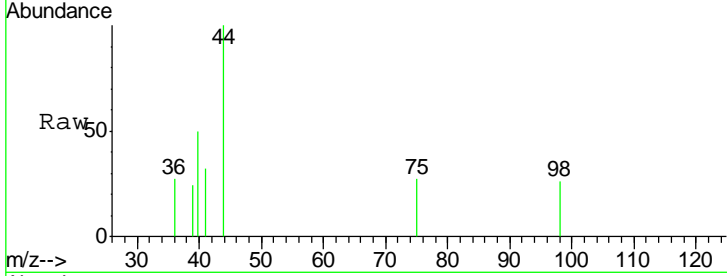




#54  
 cis-1,3-Dichloropropene  
 Concen: 2.27 ug/l  
 RT: 9.05 min Scan# 1388  
 Delta R.T. 0.00 min  
 Lab File: VX001445.D  
 Acq: 06 May 2018 15:44

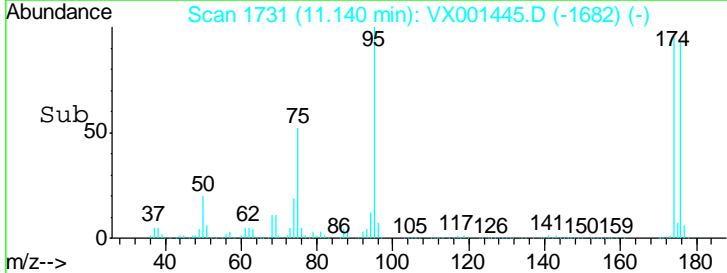
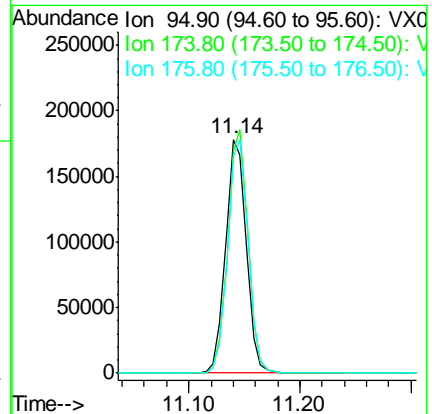
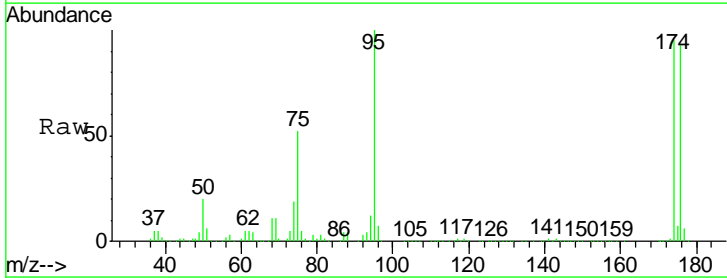
Instrument :  
 MSVOA\_X  
 ClientSampleId :  
 BPS1-TT-MW302D-20180428

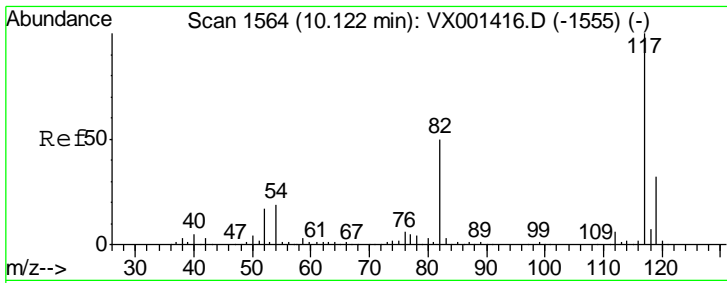
| Tgt Ion | Resp | Lower | Upper |
|---------|------|-------|-------|
| 75      | 100  |       |       |
| 77      | 0.0  | 25.5  | 38.3# |
| 39      | 0.0  | 38.9  | 58.3# |



#62  
 4-Bromofluorobenzene  
 Concen: 45.21 ug/l  
 RT: 11.14 min Scan# 1731  
 Delta R.T. 0.00 min  
 Lab File: VX001445.D  
 Acq: 06 May 2018 15:44

| Tgt Ion | Resp  | Lower | Upper |
|---------|-------|-------|-------|
| 95      | 100   |       |       |
| 174     | 102.2 | 0.0   | 202.0 |
| 176     | 99.0  | 0.0   | 197.4 |

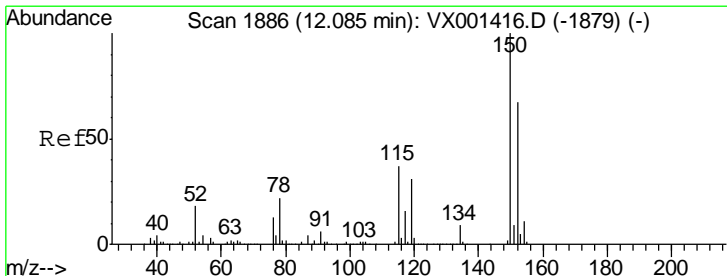
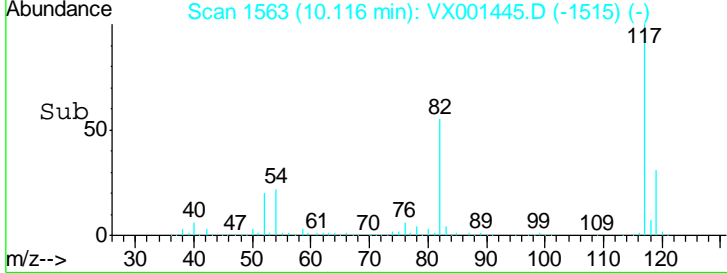
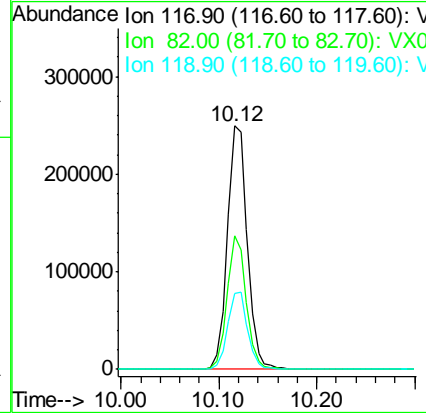
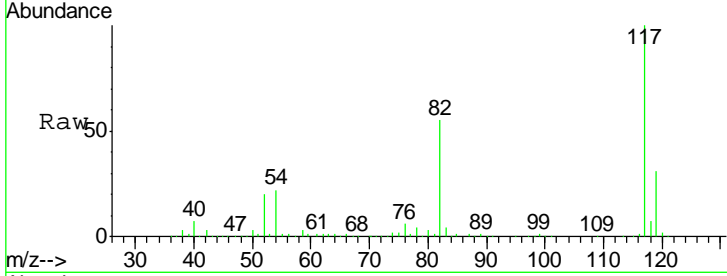




#63  
 Chlorobenzene-d5  
 Concen: 50.00 ug/l  
 RT: 10.12 min Scan# 1563  
 Delta R.T. -0.01 min  
 Lab File: VX001445.D  
 Acq: 06 May 2018 15:44

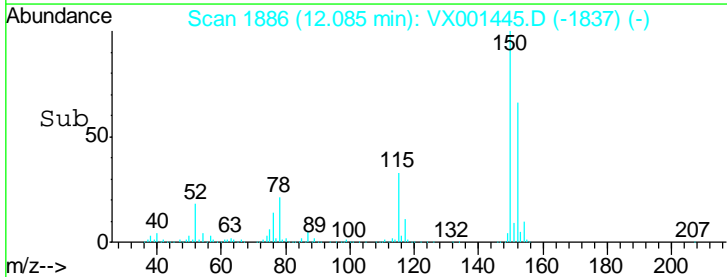
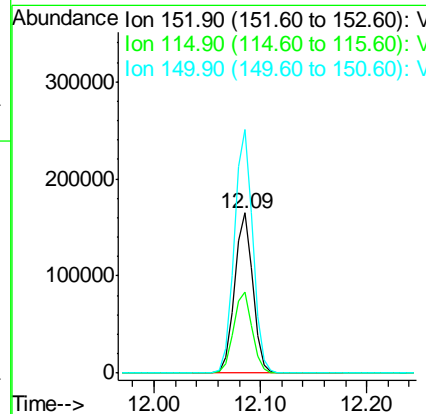
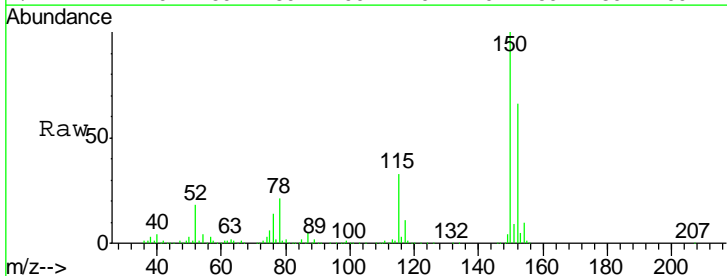
Instrument : MSVOA\_X  
 ClientSampled : BPS1-TT-MW302D-20180428

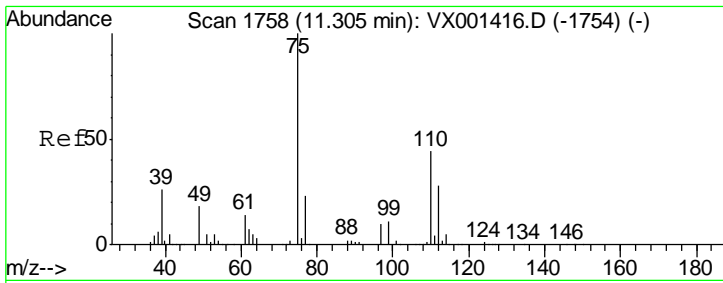
| Tgt Ion | Resp   | Lower | Upper |
|---------|--------|-------|-------|
| 117     | 352908 |       |       |
| 82      | 54.6   | 40.0  | 60.0  |
| 119     | 31.4   | 25.8  | 38.8  |



#72  
 1,4-Dichlorobenzene-d4  
 Concen: 50.00 ug/l  
 RT: 12.09 min Scan# 1886  
 Delta R.T. 0.00 min  
 Lab File: VX001445.D  
 Acq: 06 May 2018 15:44

| Tgt Ion | Resp   | Lower | Upper |
|---------|--------|-------|-------|
| 152     | 198417 |       |       |
| 115     | 51.8   | 37.7  | 113.1 |
| 150     | 153.9  | 0.0   | 349.4 |

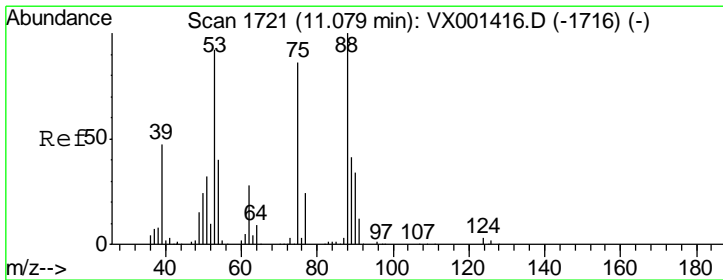
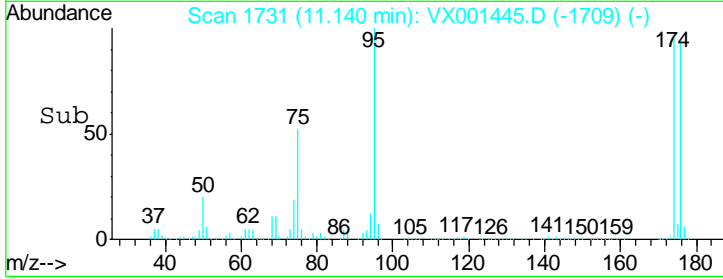
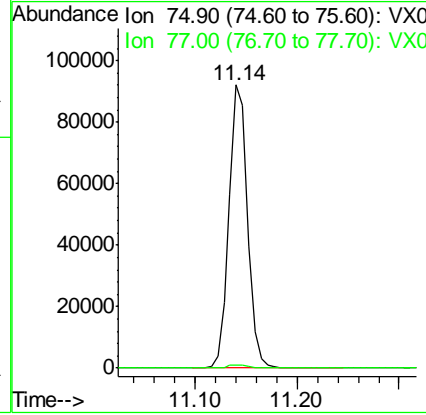
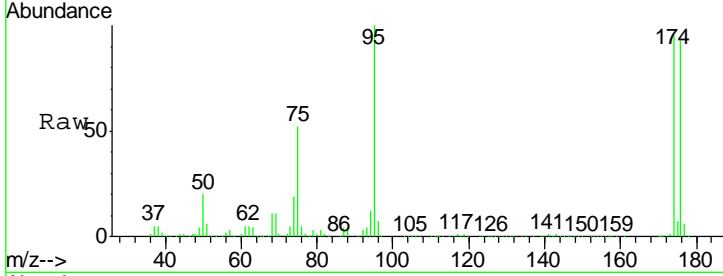




#76  
 1,2,3-Trichloropropane  
 Concen: 28.86 ug/l  
 RT: 11.14 min Scan# 1731  
 Delta R.T. -0.16 min  
 Lab File: VX001445.D  
 Acq: 06 May 2018 15:44

Instrument :  
 MSVOA\_X  
 ClientSampled :  
 BPS1-TT-MW302D-20180428

Tgt Ion: 75 Resp: 116143  
 Ion Ratio Lower Upper  
 75 100  
 77 1.2 19.6 58.7#



#81  
 trans-1,4-Dichloro-2-butene  
 Concen: 88.42 ug/l  
 RT: 11.14 min Scan# 1731  
 Delta R.T. 0.06 min  
 Lab File: VX001445.D  
 Acq: 06 May 2018 15:44

Tgt Ion: 75 Resp: 116143  
 Ion Ratio Lower Upper  
 75 100  
 53 0.1 84.5 126.7#  
 89 0.0 39.5 59.3#

