

Data Path : W:\HPCHEM1\MSVOA X\DATA\VX050718\
 Data File : VX001492.D
 Acq On : 08 May 2018 03:46
 Operator : JC/MD
 Sample : J2754-16 5X
 Misc : 5.0mL/MSVOA X/WATER
 ALS Vial : 35 Sample Multiplier: 1

Instrument :
 MSVOA_X
 ClientSampled :
 LS-SOIL-PILE-2B

Quant Time: May 08 07:53:08 2018
 Quant Method : W:\HPCHEM1\MSVOA_X\METHOD\82X050518W.M
 Quant Title : SW846 8260
 QLast Update : Sun May 06 07:59:25 2018
 Response via : Initial Calibration

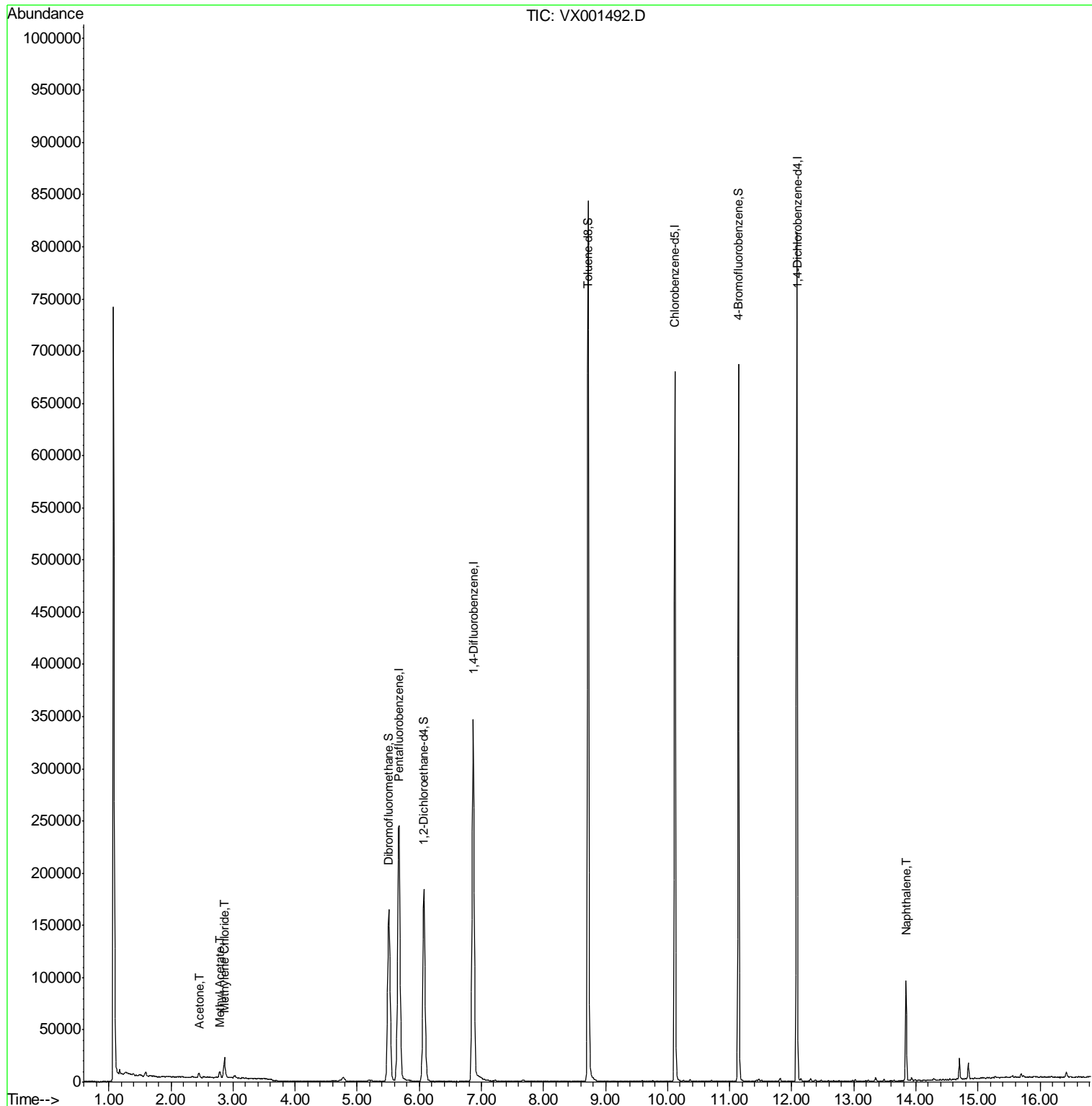
Internal Standards	R.T.	QIon	Response	Conc	Units	Dev(Min)
1) Pentafluorobenzene	5.67	168	260790	50.00	ug/l	0.00
34) 1,4-Difluorobenzene	6.87	114	357143	50.00	ug/l	0.00
63) Chlorobenzene-d5	10.12	117	317371	50.00	ug/l	0.00
72) 1,4-Dichlorobenzene-d4	12.09	152	175994	50.00	ug/l	0.00
System Monitoring Compounds						
33) 1,2-Dichloroethane-d4	6.07	65	175416	46.80	ug/l	0.00
Spiked Amount	50.000		Recovery	=	93.60%	
35) Dibromofluoromethane	5.51	113	135423	42.63	ug/l	0.00
Spiked Amount	50.000		Recovery	=	85.26%	
50) Toluene-d8	8.72	98	496660	42.83	ug/l	0.00
Spiked Amount	50.000		Recovery	=	85.66%	
62) 4-Bromofluorobenzene	11.14	95	163541	36.74	ug/l	0.00
Spiked Amount	50.000		Recovery	=	73.48%	
Target Compounds						
16) Acetone	2.45	43	4773	2.80	ug/l	92
18) Methyl Acetate	2.78	43	6616	1.48	ug/l	100
20) Methylene Chloride	2.86	84	8560	2.54	ug/l	91
95) Naphthalene	13.84	128	60096	4.61	ug/l	100

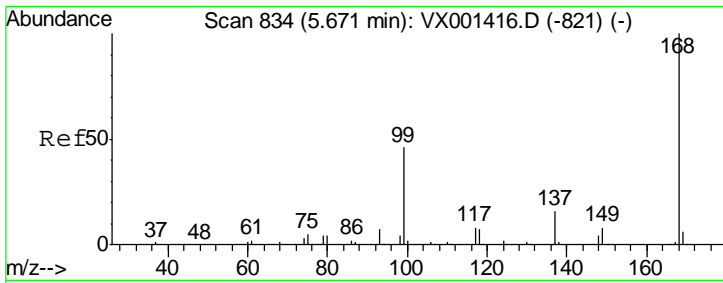
(#) = qualifier out of range (m) = manual integration (+) = signals summed

Data Path : W:\HPCHEM1\MSVOA X\DATA\VX050718\
 Data File : VX001492.D
 Acq On : 08 May 2018 03:46
 Operator : JC/MD
 Sample : J2754-16 5X
 Misc : 5.0mL/MSVOA X/WATER
 ALS Vial : 35 Sample Multiplier: 1

Instrument :
 MSVOA_X
 Client Sampled :
 LS-SOIL-PILE-2B

Quant Time: May 08 07:53:08 2018
 Quant Method : W:\HPCHEM1\MSVOA_X\METHOD\82X050518W.M
 Quant Title : SW846 8260
 QLast Update : Sun May 06 07:59:25 2018
 Response via : Initial Calibration

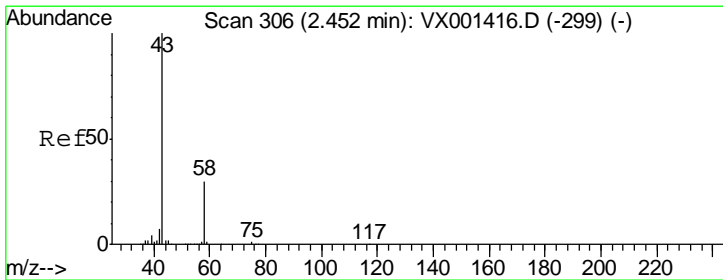
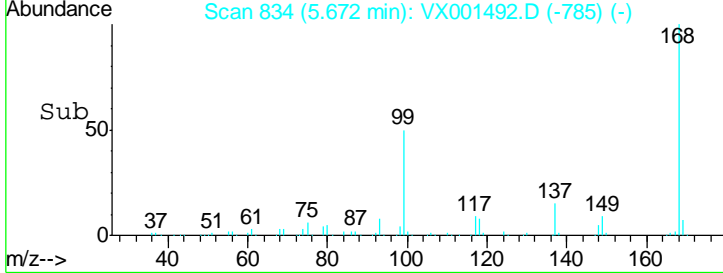
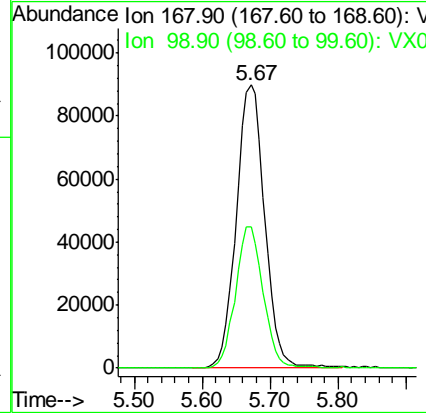
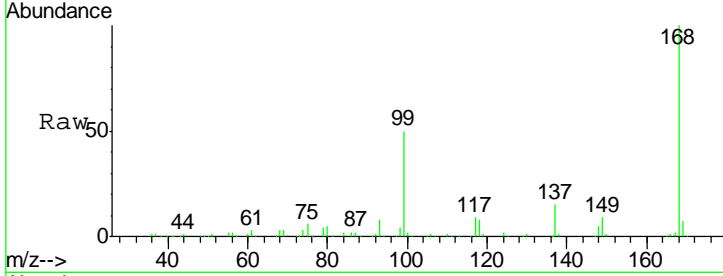




#1
 Pentafluorobenzene
 Concen: 50.00 ug/l
 RT: 5.67 min Scan# 834
 Delta R.T. 0.00 min
 Lab File: VX001492.D
 Acq: 08 May 2018 03:46

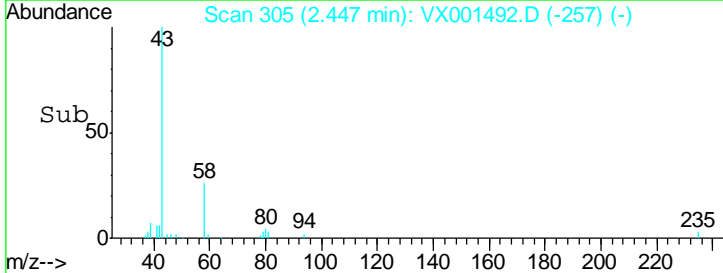
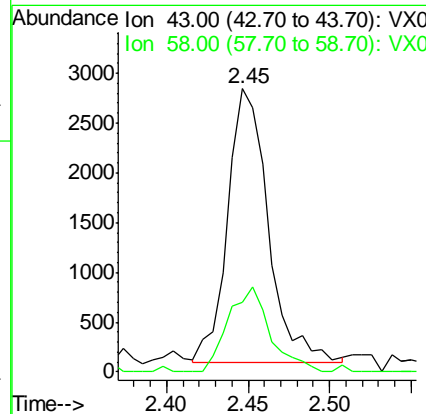
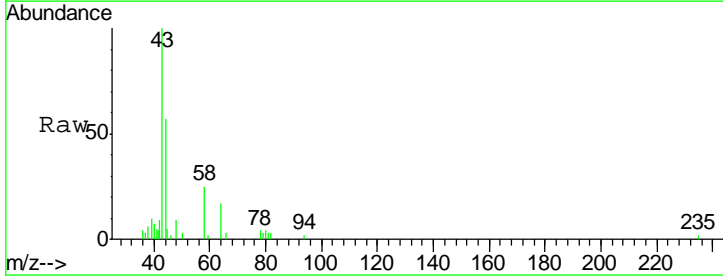
Instrument :
 MSVOA_X
ClientSampled :
 LS-SOIL-PILE-2B

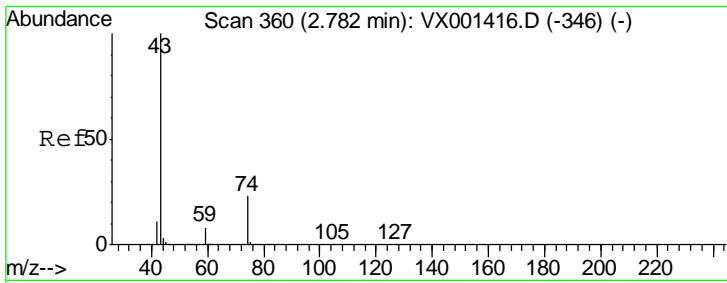
Tgt Ion	Resp	Lower	Upper
168	100		
99	49.9	36.6	54.8



#16
 Acetone
 Concen: 2.80 ug/l
 RT: 2.45 min Scan# 305
 Delta R.T. -0.01 min
 Lab File: VX001492.D
 Acq: 08 May 2018 03:46

Tgt Ion	Resp	Lower	Upper
43	100		
58	25.7	23.8	35.8

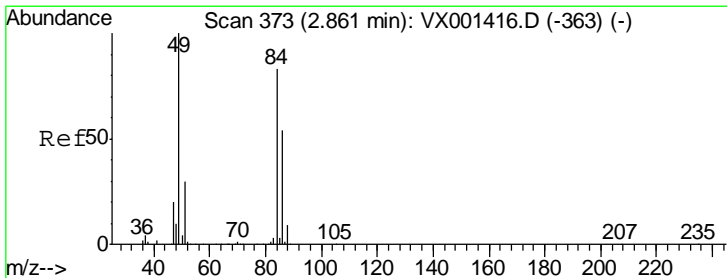
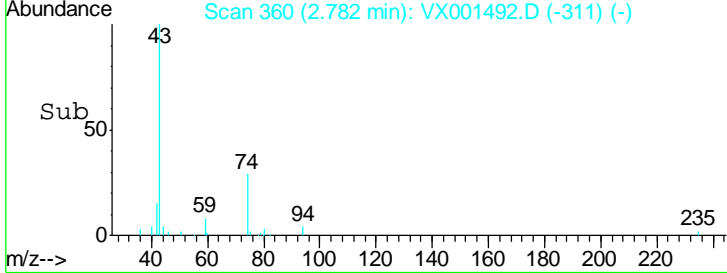
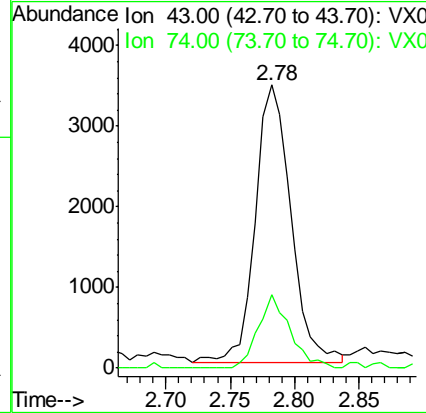
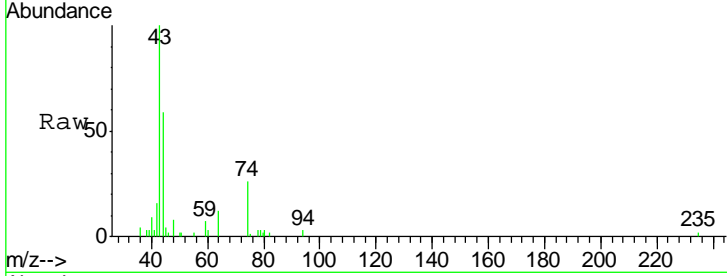




#18
 Methyl Acetate
 Concen: 1.48 ug/l
 RT: 2.78 min Scan# 360
 Delta R.T. 0.00 min
 Lab File: VX001492.D
 Acq: 08 May 2018 03:46

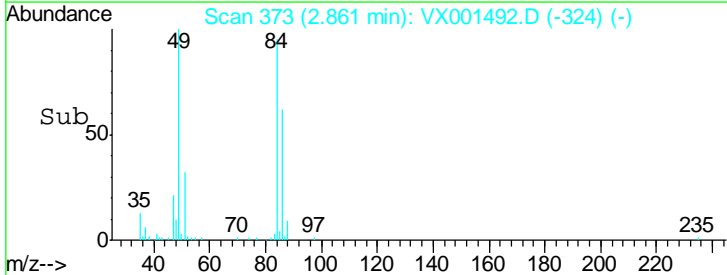
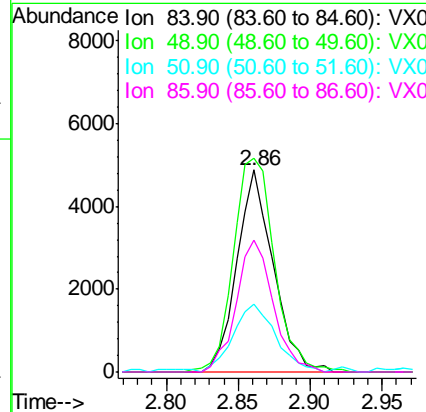
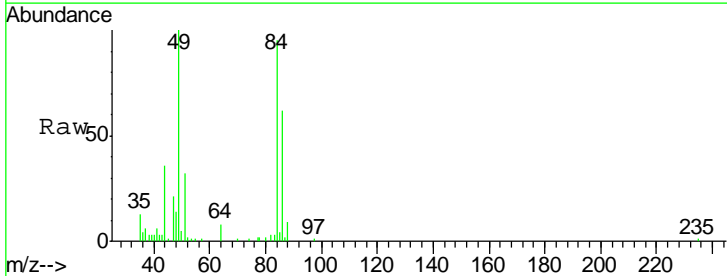
Instrument :
 MSVOA_X
ClientSampled :
 LS-SOIL-PILE-2B

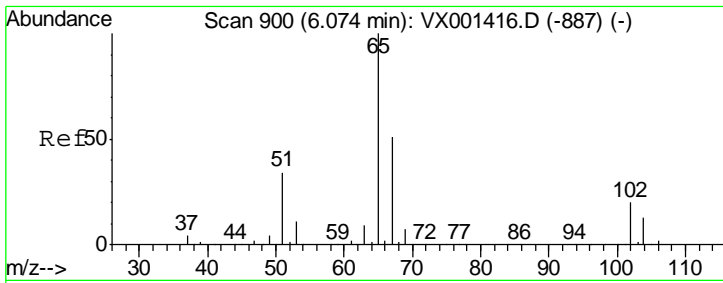
Tgt Ion	Resp	Lower	Upper
43	6616		
74	23.3	18.6	27.8



#20
 Methylene Chloride
 Concen: 2.54 ug/l
 RT: 2.86 min Scan# 373
 Delta R.T. 0.00 min
 Lab File: VX001492.D
 Acq: 08 May 2018 03:46

Tgt Ion	Resp	Lower	Upper
84	8560		
49	104.6	96.6	144.8
51	32.5	29.0	43.4
86	65.4	52.2	78.4

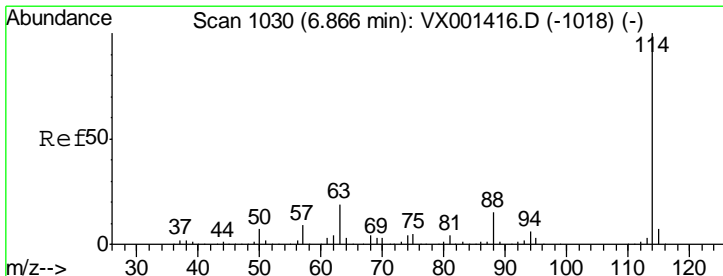
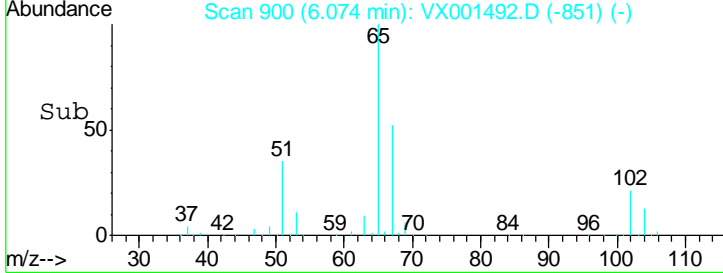
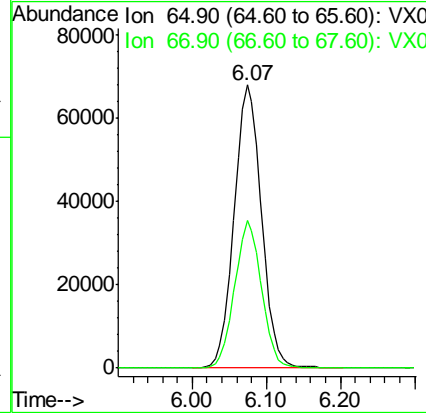
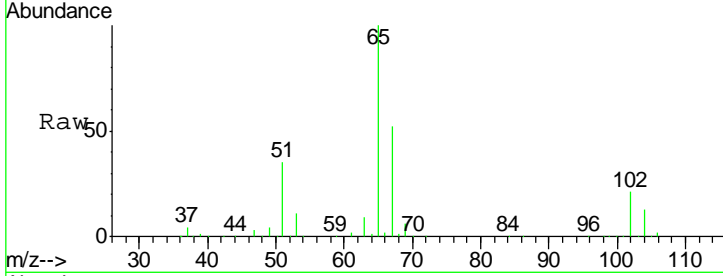




#33
 1,2-Dichloroethane-d4
 Concen: 46.80 ug/l
 RT: 6.07 min Scan# 900
 Delta R.T. 0.00 min
 Lab File: VX001492.D
 Acq: 08 May 2018 03:46

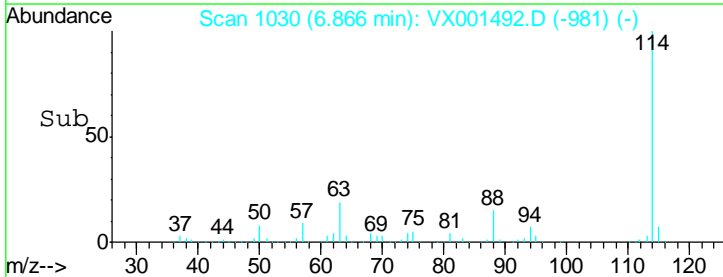
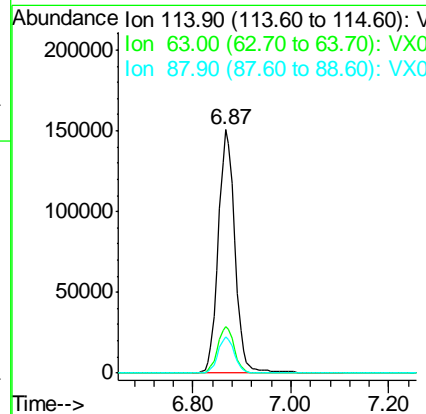
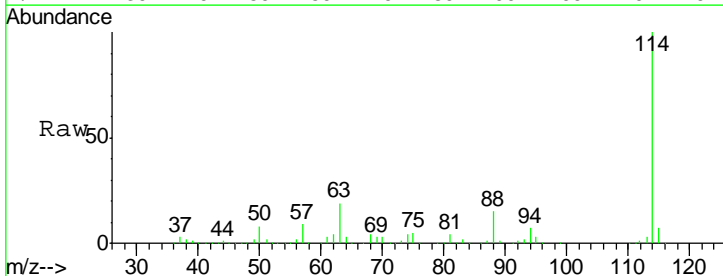
Instrument :
 MSVOA_X
ClientSampled :
 LS-SOIL-PILE-2B

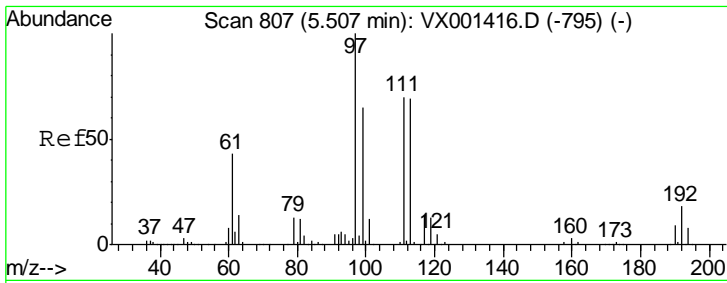
Tgt Ion	Resp	Lower	Upper
65	175416		
67	51.0	0.0	101.8



#34
 1,4-Difluorobenzene
 Concen: 50.00 ug/l
 RT: 6.87 min Scan# 1030
 Delta R.T. 0.00 min
 Lab File: VX001492.D
 Acq: 08 May 2018 03:46

Tgt Ion	Resp	Lower	Upper
114	357143		
63	19.4	0.0	38.6
88	15.1	0.0	30.8



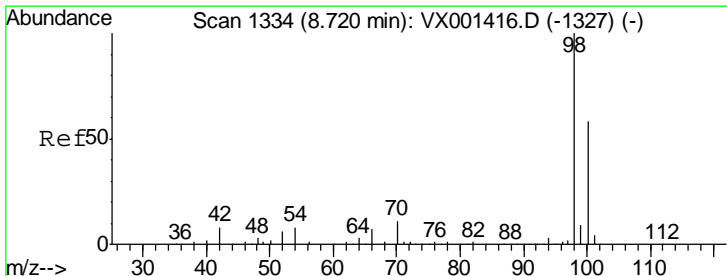
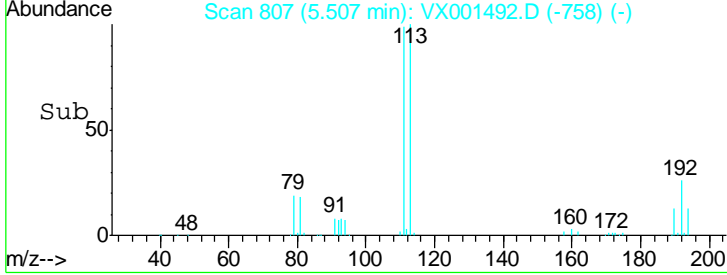
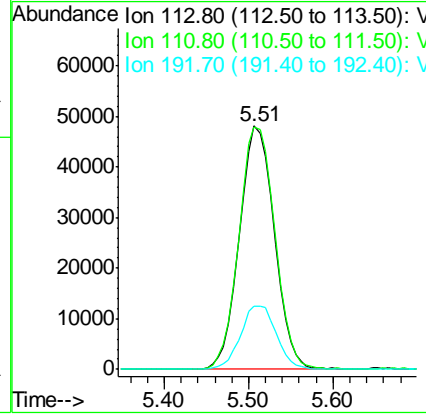
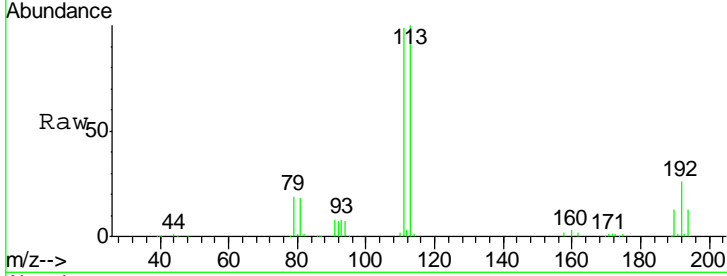


#35
 Dibromofluoromethane
 Concen: 42.63 ug/l
 RT: 5.51 min Scan# 807
 Delta R.T. 0.00 min
 Lab File: VX001492.D
 Acq: 08 May 2018 03:46

Instrument : MSVOA_X
 ClientSampled : LS-SOIL-PILE-2B

Tot Ion:113 Resp: 135423

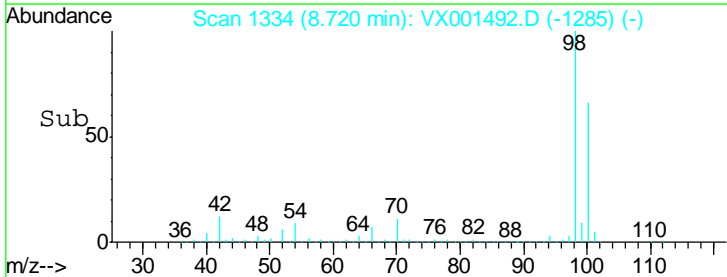
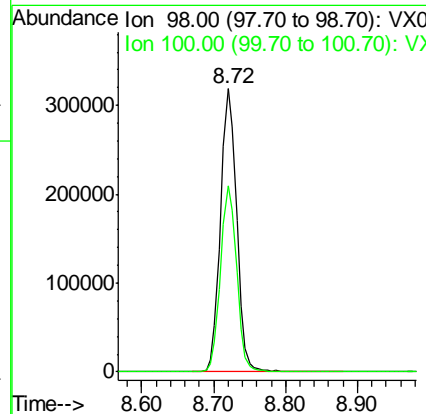
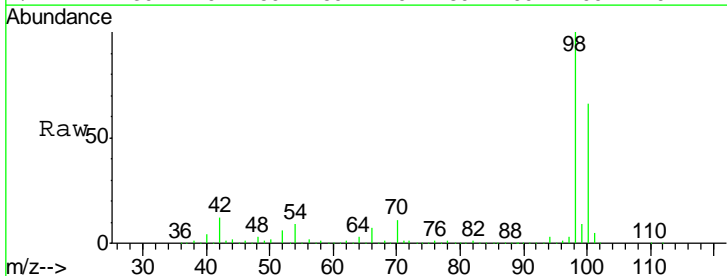
Ion	Ratio	Lower	Upper
113	100		
111	102.2	82.2	123.2
192	26.7	21.4	32.0

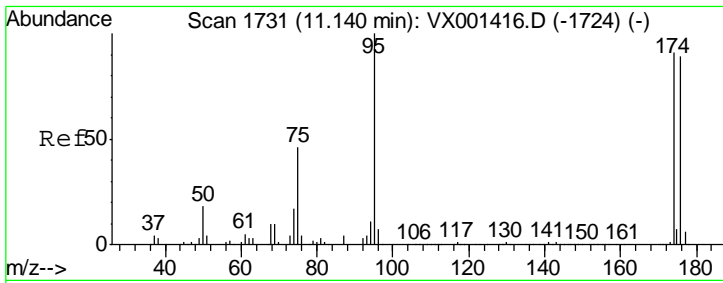


#50
 Toluene-d8
 Concen: 42.83 ug/l
 RT: 8.72 min Scan# 1334
 Delta R.T. 0.00 min
 Lab File: VX001492.D
 Acq: 08 May 2018 03:46

Tgt Ion: 98 Resp: 496660

Ion	Ratio	Lower	Upper
98	100		
100	65.5	54.0	81.0

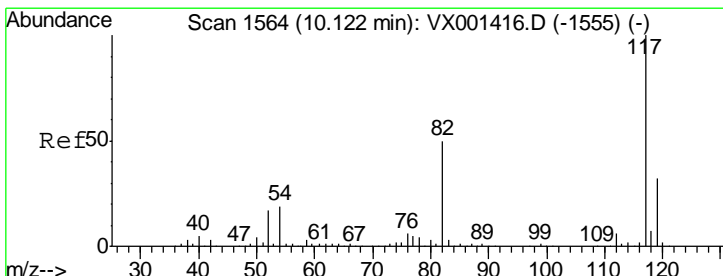
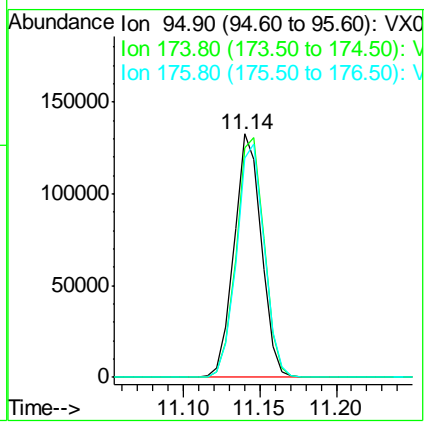
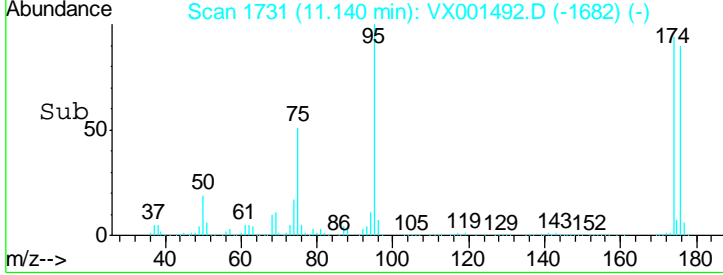
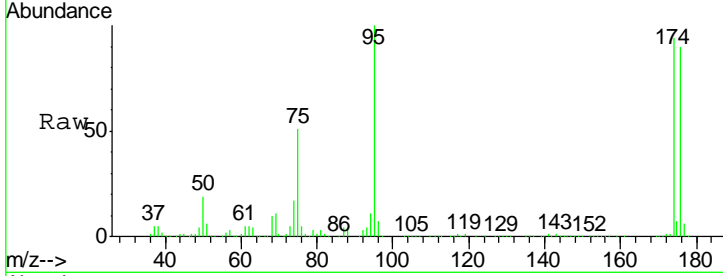




#62
 4-Bromofluorobenzene
 Concen: 36.74 ug/l
 RT: 11.14 min Scan# 1731
 Delta R.T. 0.00 min
 Lab File: VX001492.D
 Acq: 08 May 2018 03:46

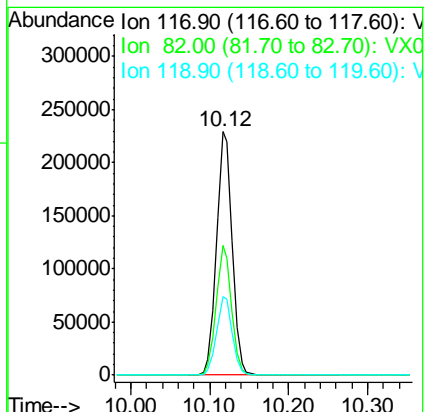
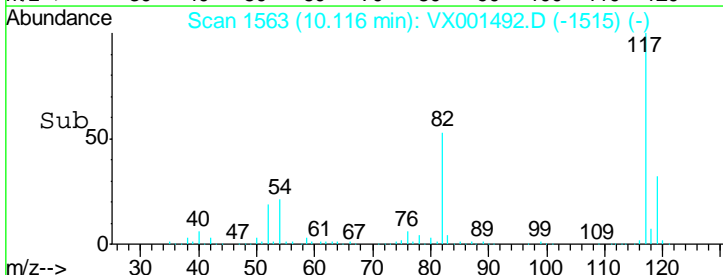
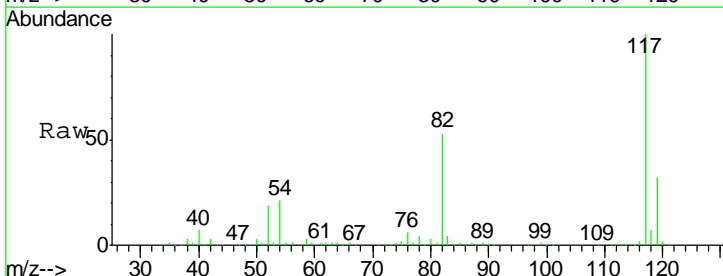
Instrument : MSVOA_X
 ClientSampled : LS-SOIL-PILE-2B

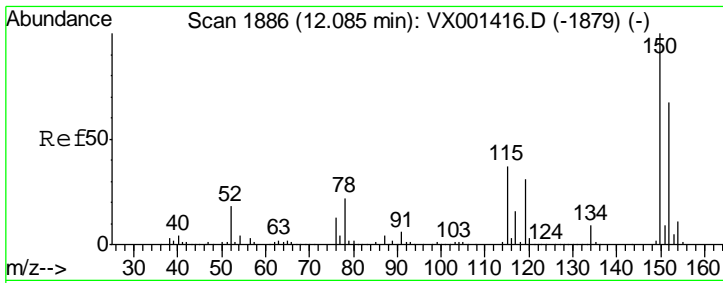
Tgt Ion	Resp	Lower	Upper
95	163541		
174	100.7	0.0	202.0
176	97.8	0.0	197.4



#63
 Chlorobenzene-d5
 Concen: 50.00 ug/l
 RT: 10.12 min Scan# 1563
 Delta R.T. -0.01 min
 Lab File: VX001492.D
 Acq: 08 May 2018 03:46

Tgt Ion	Resp	Lower	Upper
117	317371		
82	53.4	40.0	60.0
119	32.1	25.8	38.8

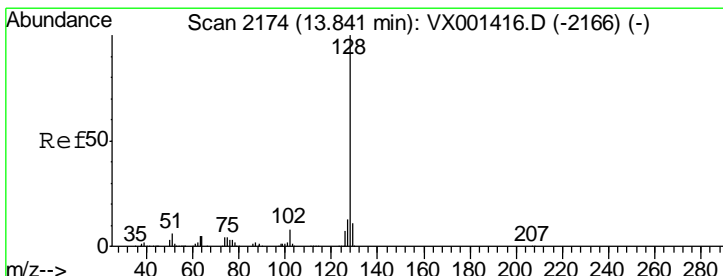
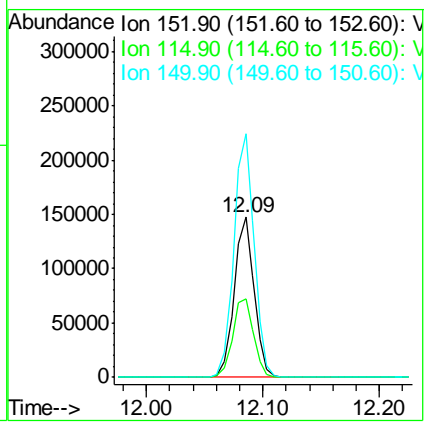
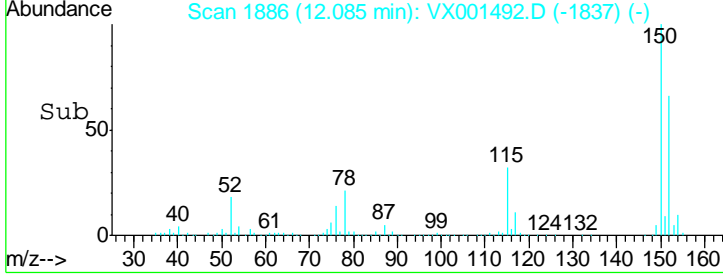
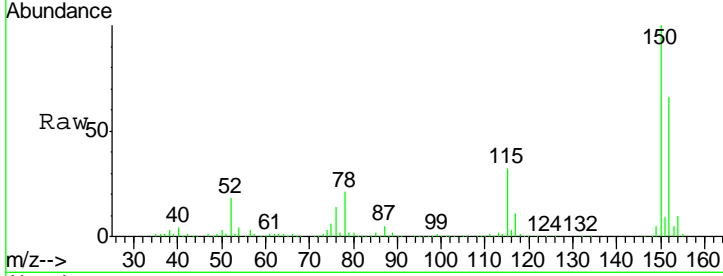




#72
 1,4-Dichlorobenzene-d4
 Concen: 50.00 ug/l
 RT: 12.09 min Scan# 1886
 Delta R.T. 0.00 min
 Lab File: VX001492.D
 Acq: 08 May 2018 03:46

Instrument : MSVOA_X
 ClientSampled : LS-SOIL-PILE-2B

Tgt Ion	Resp	Lower	Upper
152	100		
115	51.8	37.7	113.1
150	154.1	0.0	349.4



#95
 Naphthalene
 Concen: 4.61 ug/l
 RT: 13.84 min Scan# 2174
 Delta R.T. 0.00 min
 Lab File: VX001492.D
 Acq: 08 May 2018 03:46

Tgt Ion	Resp	Lower	Upper
128	100		
127	12.8	10.4	15.6
129	11.0	8.7	13.1

