

Data File : VX001590.D  
 Acq On : 10 May 2018 07:20  
 Operator : JC/MD  
 Sample : J2807-04 5X  
 Misc : 5.0mL/MSVOA\_X/WATER  
 ALS Vial : 40 Sample Multiplier: 1

**Instrument :**  
 MSVOA\_X  
**Client Sampled :**  
 BLACK-BROWN-SOIL

Quant Time: May 10 08:28:33 2018  
 Quant Method : W:\HPCHEM1\MSVOA\_X\METHOD\82X050518W.M  
 Quant Title : SW846 8260  
 QLast Update : Sun May 06 07:59:25 2018  
 Response via : Initial Calibration

Internal Standards	R.T.	QIon	Response	Conc	Units	Dev(Min)
1) Pentafluorobenzene	5.67	168	274910	50.00	ug/l	0.00
34) 1,4-Difluorobenzene	6.87	114	381191	50.00	ug/l	0.00
63) Chlorobenzene-d5	10.12	117	336645	50.00	ug/l	0.00
72) 1,4-Dichlorobenzene-d4	12.08	152	184416	50.00	ug/l	0.00

System Monitoring Compounds	R.T.	QIon	Response	Conc	Units	Dev(Min)
33) 1,2-Dichloroethane-d4	6.07	65	184495	46.69	ug/l	0.00
Spiked Amount				50.000		
Recovery				=	93.38%	
35) Dibromofluoromethane	5.51	113	141941	41.86	ug/l	0.00
Spiked Amount				50.000		
Recovery				=	83.72%	
50) Toluene-d8	8.72	98	526360	42.53	ug/l	0.00
Spiked Amount				50.000		
Recovery				=	85.06%	
62) 4-Bromofluorobenzene	11.14	95	170391	35.86	ug/l	0.00
Spiked Amount				50.000		
Recovery				=	71.72%	

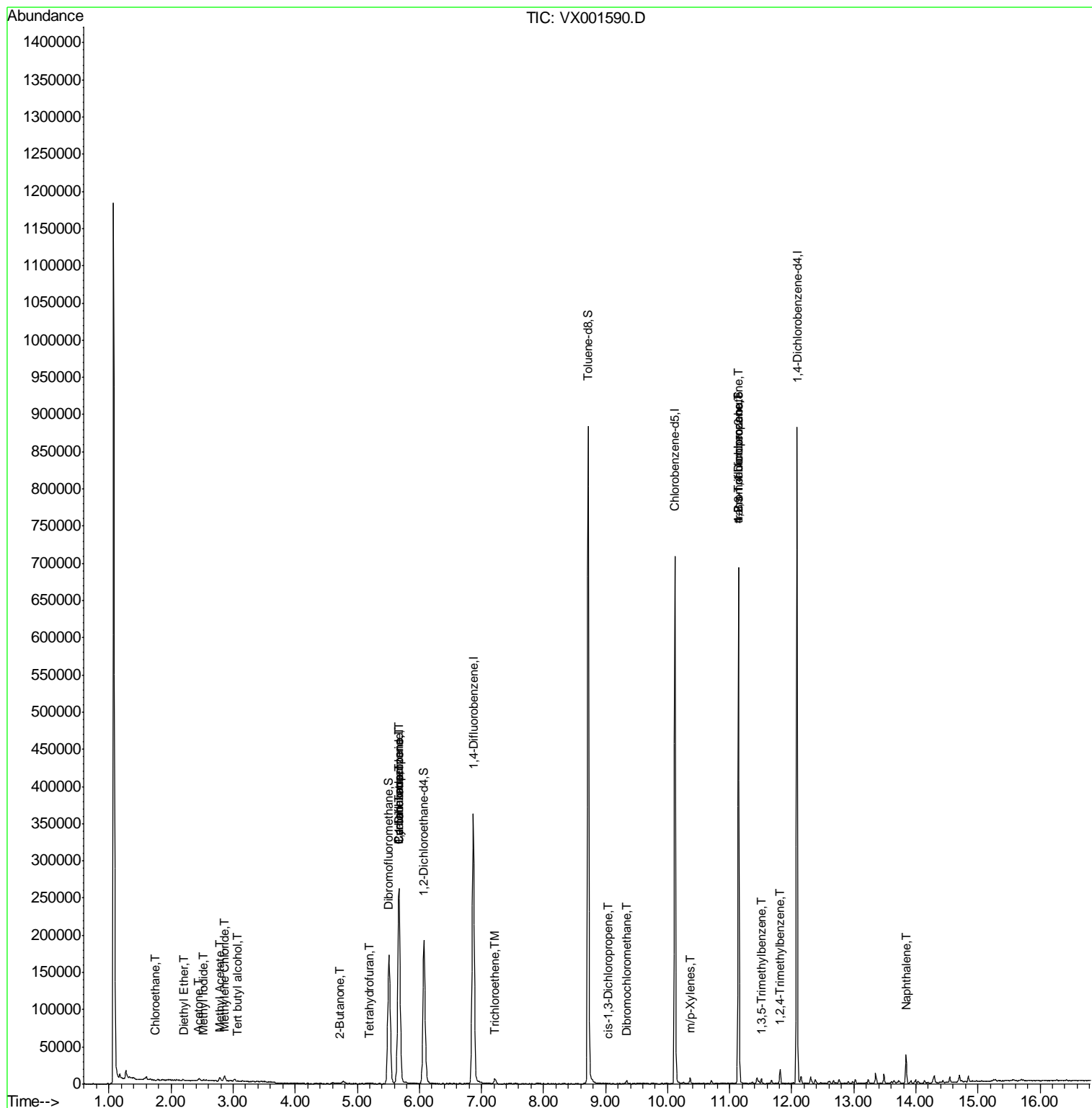
Target Compounds	R.T.	QIon	Response	Conc	Units	Qvalue
5) Bromomethane	1.65	94	731	Below Cal	#	77
6) Chloroethane	1.74	64	562	0.23	ug/l #	87
8) Diethyl Ether	2.20	74	484	0.22	ug/l	95
10) Methyl Iodide	2.52	142	1847	0.39	ug/l	98
11) Tert butyl alcohol	3.07	59	546	0.66	ug/l #	72
13) Acrolein	2.29	56	71	Below Cal	#	1
16) Acetone	2.45	43	4173	2.33	ug/l #	81
18) Methyl Acetate	2.78	43	5409	1.15	ug/l	96
20) Methylene Chloride	2.87	84	2731	0.77	ug/l	95
25) 2-Butanone	4.71	43	1070	0.41	ug/l	94
29) Tetrahydrofuran	5.19	42	907	0.55	ug/l #	58
31) Cyclohexane	5.67	56	5100	1.00	ug/l #	39
36) 1,1-Dichloropropene	5.67	75	17213	3.55	ug/l #	49
38) Carbon Tetrachloride	5.67	117	24210	4.68	ug/l #	16
44) Trichloroethene	7.21	130	2526	0.58	ug/l	92
54) cis-1,3-Dichloropropene	9.04	75	127	2.29	ug/l #	34
60) Dibromochloromethane	9.34	129	902	0.24	ug/l #	11
68) m/p-Xylenes	10.37	106	1925	0.30	ug/l	99
76) 1,2,3-Trichloropropane	11.14	75	84937	22.71	ug/l #	38
80) 1,3,5-Trimethylbenzene	11.51	105	2423	0.23	ug/l	96
81) trans-1,4-Dichloro-2-buten	11.14	75	84937	70.48	ug/l #	7
84) 1,2,4-Trimethylbenzene	11.81	105	8093	0.74	ug/l	95
95) Naphthalene	13.84	128	22039	1.61	ug/l	99

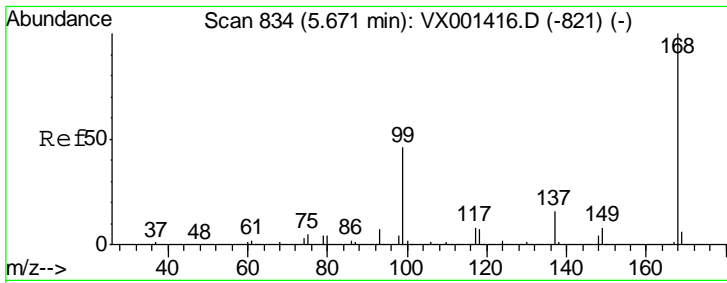
(#) = qualifier out of range (m) = manual integration (+) = signals summed

Data File : VX001590.D  
Acq On : 10 May 2018 07:20  
Operator : JC/MD  
Sample : J2807-04 5X  
Misc : 5.0mL/MSVOA\_X/WATER  
ALS Vial : 40 Sample Multiplier: 1

Instrument :  
MSVOA\_X  
Client Sampled :  
BLACK-BROWN-SOIL

Quant Time: May 10 08:28:33 2018  
Quant Method : W:\HPCHEM1\MSVOA\_X\METHOD\82X050518W.M  
Quant Title : SW846 8260  
QLast Update : Sun May 06 07:59:25 2018  
Response via : Initial Calibration

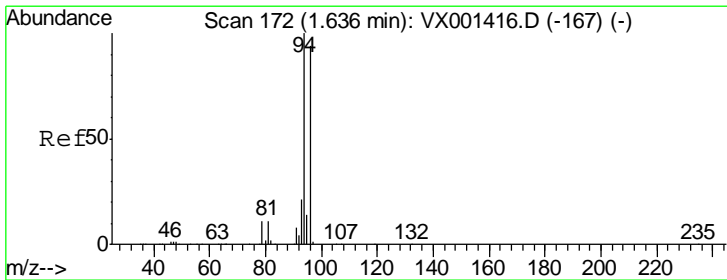
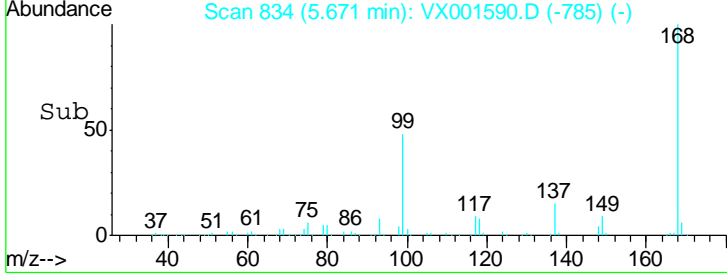
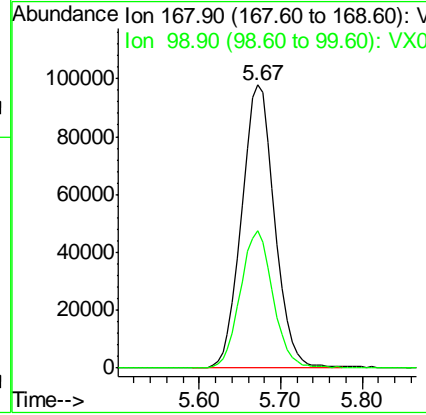
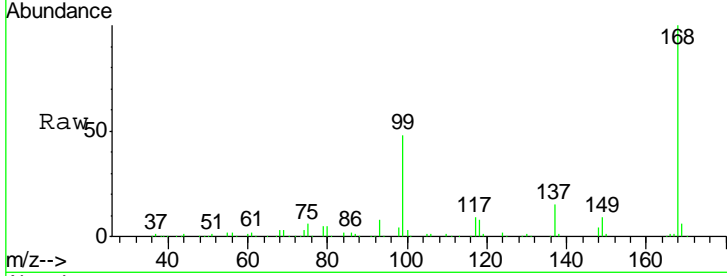




#1  
 Pentafluorobenzene  
 Concen: 50.00 ug/l  
 RT: 5.67 min Scan# 834  
 Delta R.T. 0.00 min  
 Lab File: VX001590.D  
 Acq: 10 May 2018 07:20

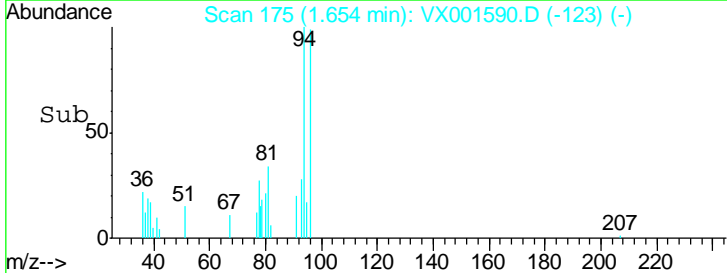
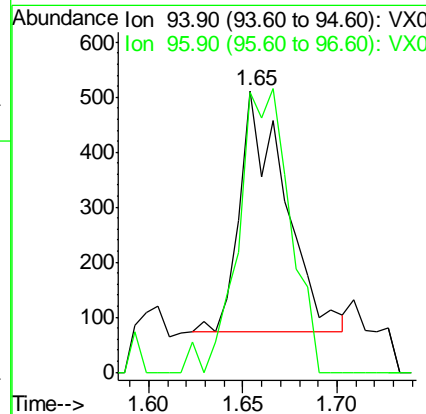
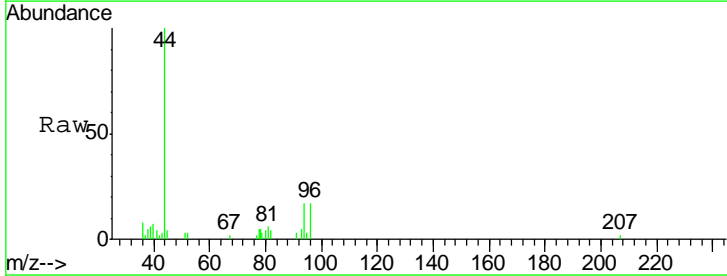
**Instrument :**  
 MSVOA\_X  
**ClientSampled :**  
 BLACK-BROWN-SOIL

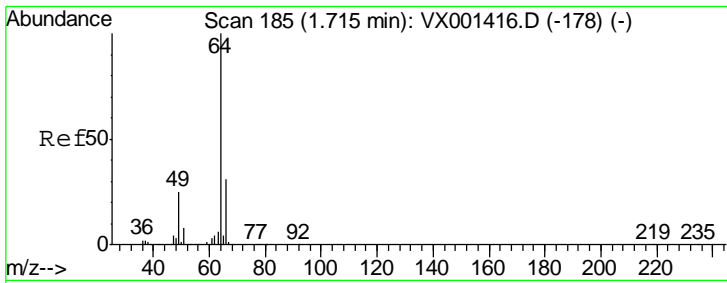
Tgt Ion: 168 Resp: 274910  
 Ion Ratio Lower Upper  
 168 100  
 99 48.4 36.6 54.8



#5  
 Bromomethane  
 Concen: Below Cal  
 RT: 1.65 min Scan# 175  
 Delta R.T. 0.02 min  
 Lab File: VX001590.D  
 Acq: 10 May 2018 07:20

Tgt Ion: 94 Resp: 731  
 Ion Ratio Lower Upper  
 94 100  
 96 115.9 75.0 112.6#

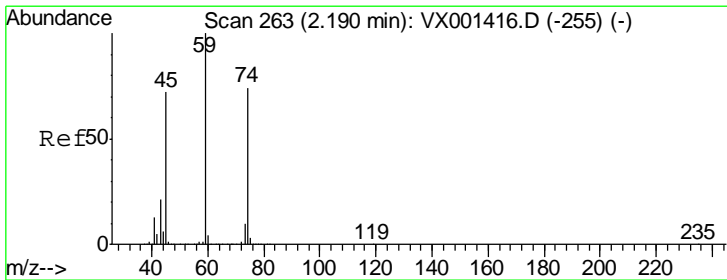
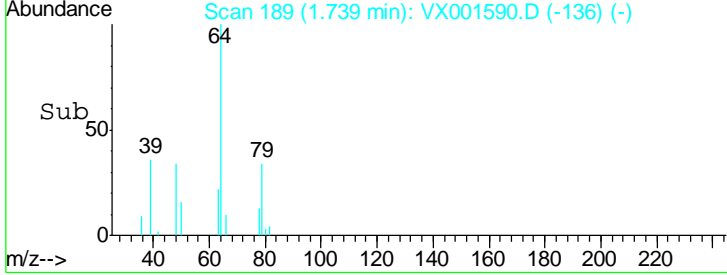
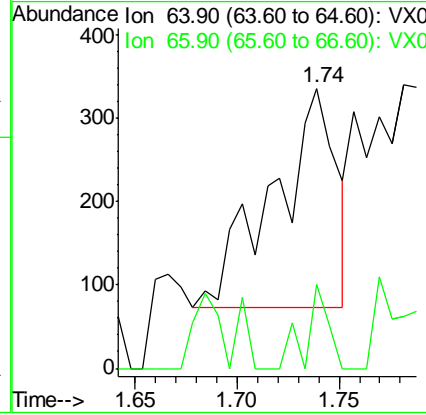
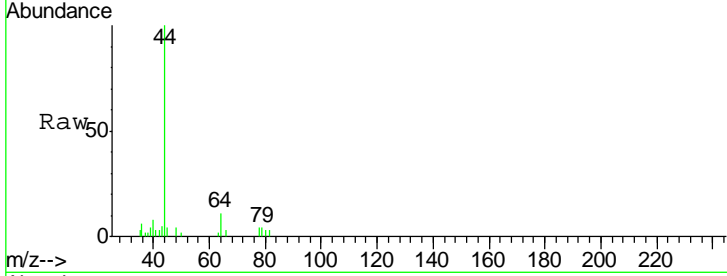




#6  
 Chloroethane  
 Concen: 0.23 ug/l  
 RT: 1.74 min Scan# 189  
 Delta R.T. 0.03 min  
 Lab File: VX001590.D  
 Acq: 10 May 2018 07:20

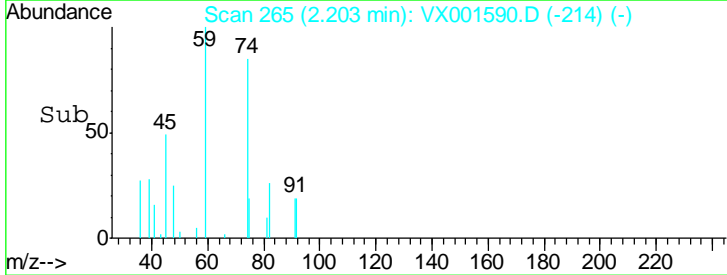
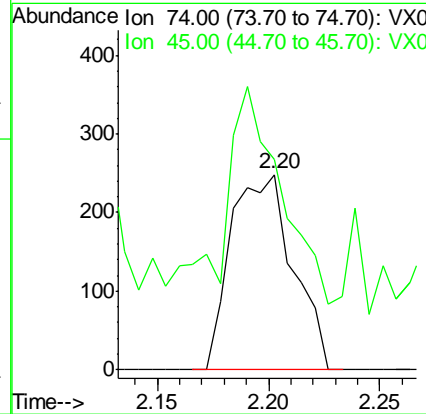
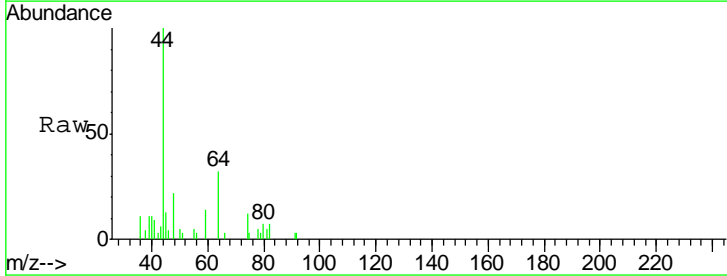
**Instrument :**  
 MSVOA\_X  
**ClientSampled :**  
 BLACK-BROWN-SOIL

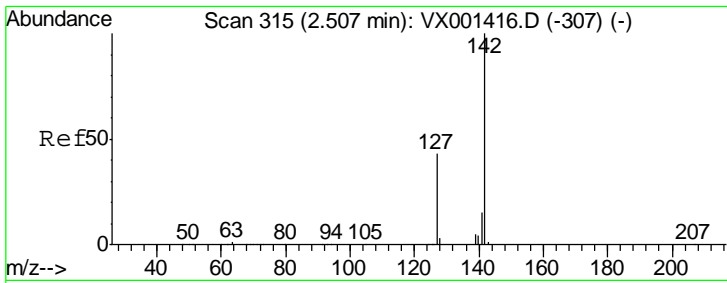
Tgt Ion: 64 Resp: 562  
 Ion Ratio Lower Upper  
 64 100  
 66 38.5 25.1 37.7#



#8  
 Diethyl Ether  
 Concen: 0.22 ug/l  
 RT: 2.20 min Scan# 265  
 Delta R.T. 0.01 min  
 Lab File: VX001590.D  
 Acq: 10 May 2018 07:20

Tgt Ion: 74 Resp: 484  
 Ion Ratio Lower Upper  
 74 100  
 45 100.2 47.9 143.6

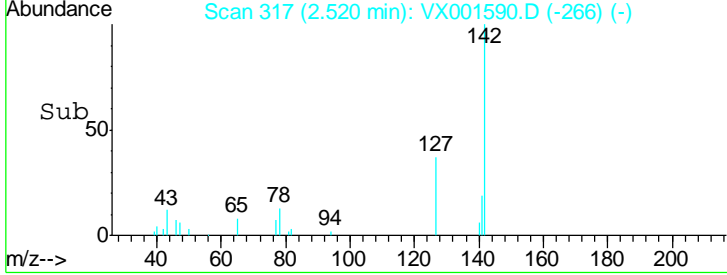
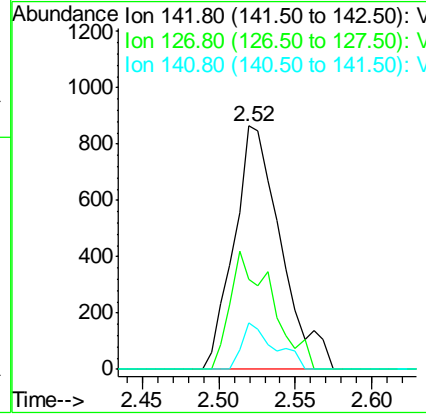
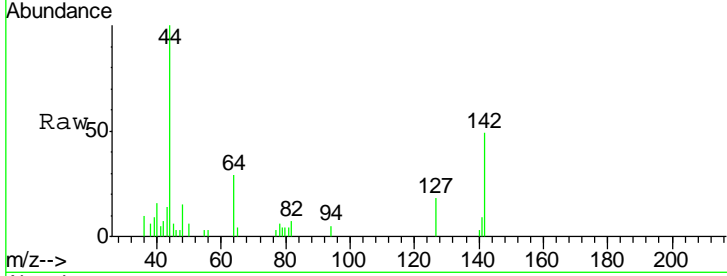




#10  
 Methyl Iodide  
 Concen: 0.39 ug/l  
 RT: 2.52 min Scan# 317  
 Delta R.T. 0.01 min  
 Lab File: VX001590.D  
 Acq: 10 May 2018 07:20

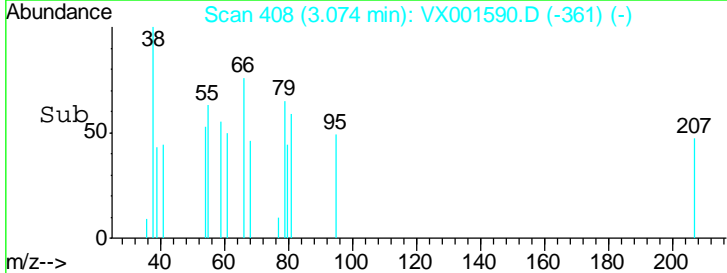
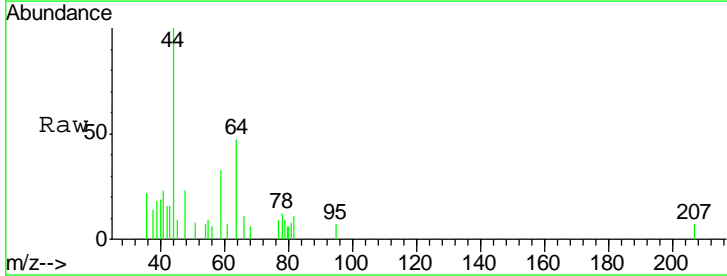
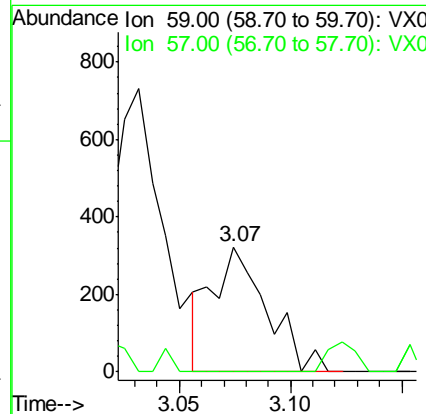
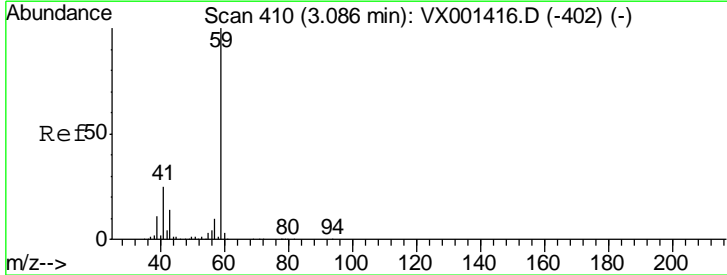
**Instrument :**  
 MSVOA\_X  
**ClientSampled :**  
 BLACK-BROWN-SOIL

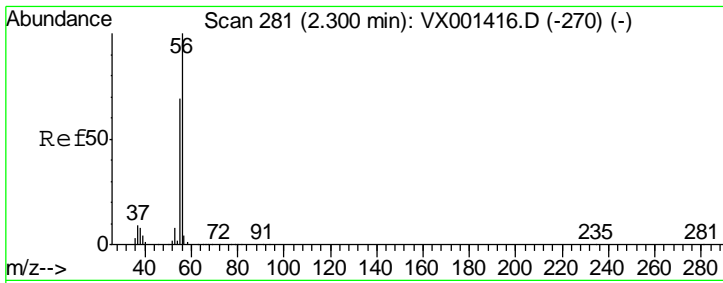
Tgt Ion	Resp	Lower	Upper
142	1847		
127	43.3	33.6	50.4
141	13.4	11.4	17.2



#11  
 Tert butyl alcohol  
 Concen: 0.66 ug/l  
 RT: 3.07 min Scan# 408  
 Delta R.T. -0.01 min  
 Lab File: VX001590.D  
 Acq: 10 May 2018 07:20

Tgt Ion	Resp	Lower	Upper
59	546		
57	0.0	8.2	12.4#

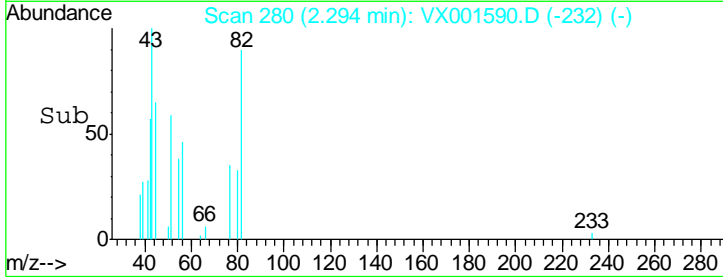
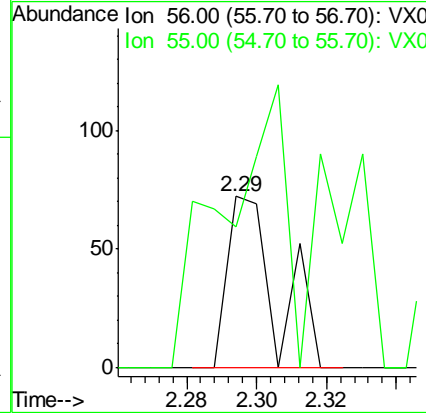
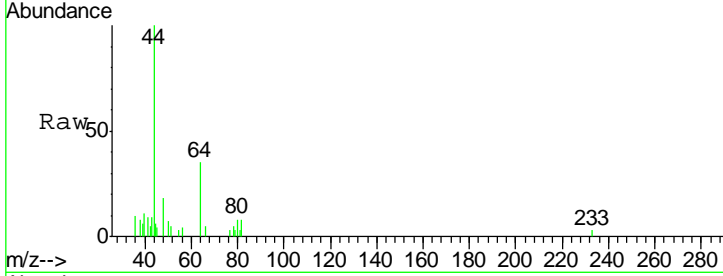




#13  
 Acrolein  
 Concen: Below Cal  
 RT: 2.29 min Scan# 280  
 Delta R.T. -0.01 min  
 Lab File: VX001590.D  
 Acq: 10 May 2018 07:20

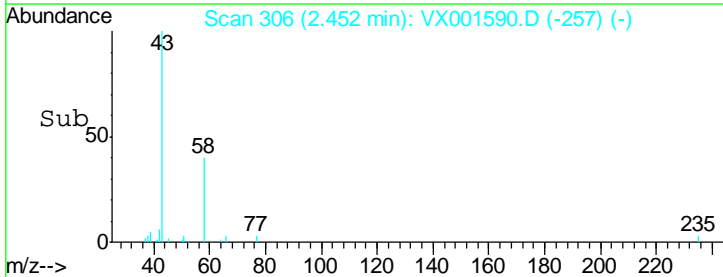
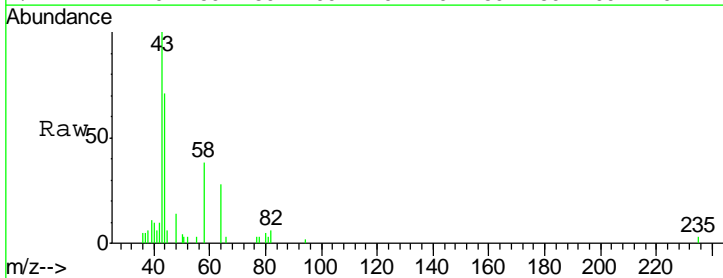
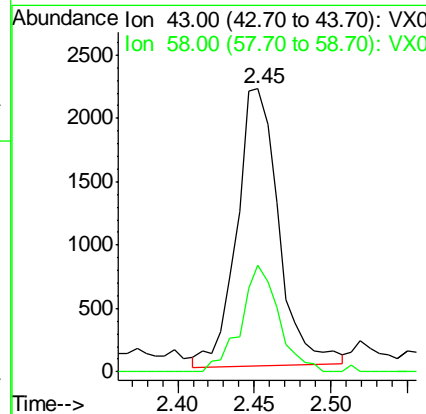
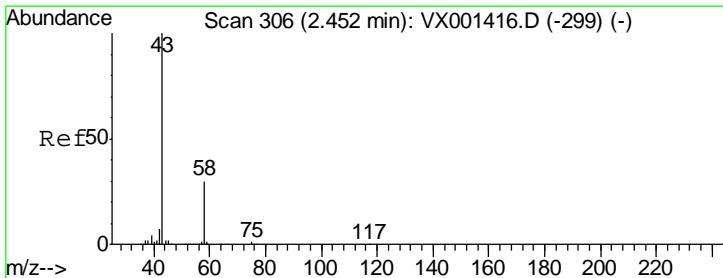
**Instrument :**  
 MSVOA\_X  
**ClientSampled :**  
 BLACK-BROWN-SOIL

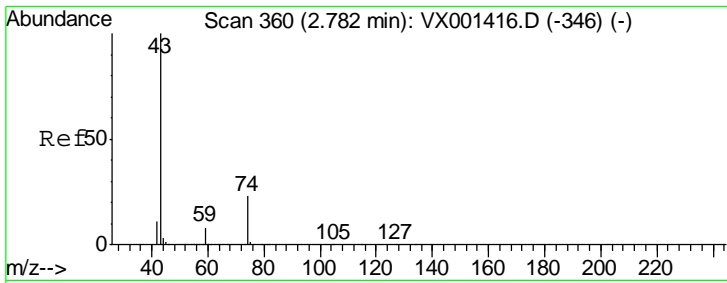
Tgt Ion: 56 Resp: 71  
 Ion Ratio Lower Upper  
 56 100  
 55 208.5 54.5 81.7#



#16  
 Acetone  
 Concen: 2.33 ug/l  
 RT: 2.45 min Scan# 306  
 Delta R.T. 0.00 min  
 Lab File: VX001590.D  
 Acq: 10 May 2018 07:20

Tgt Ion: 43 Resp: 4173  
 Ion Ratio Lower Upper  
 43 100  
 58 40.0 23.8 35.8#

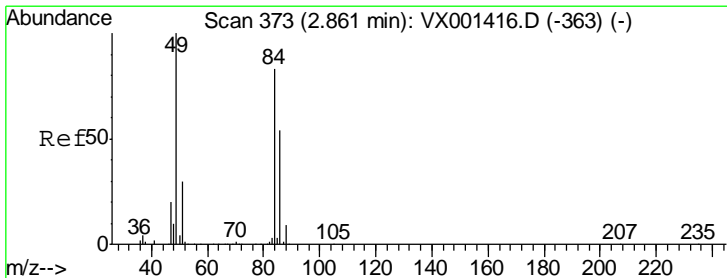
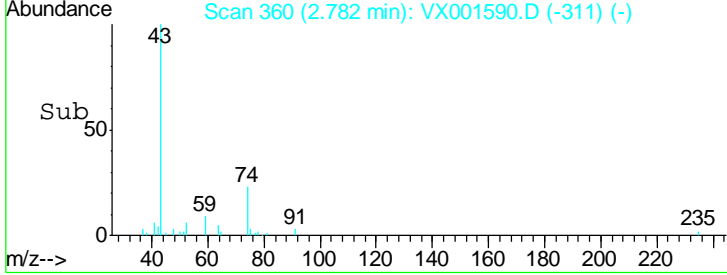
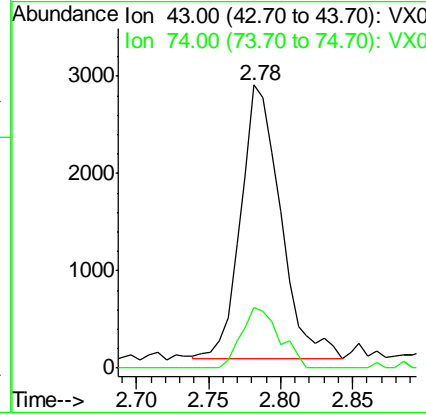
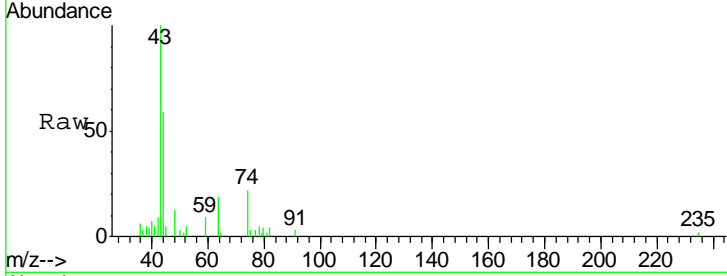




#18  
 Methyl Acetate  
 Concen: 1.15 ug/l  
 RT: 2.78 min Scan# 360  
 Delta R.T. 0.00 min  
 Lab File: VX001590.D  
 Acq: 10 May 2018 07:20

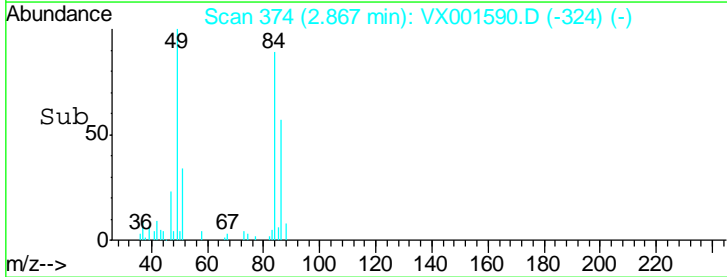
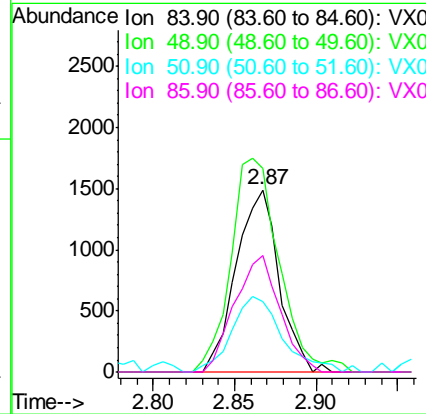
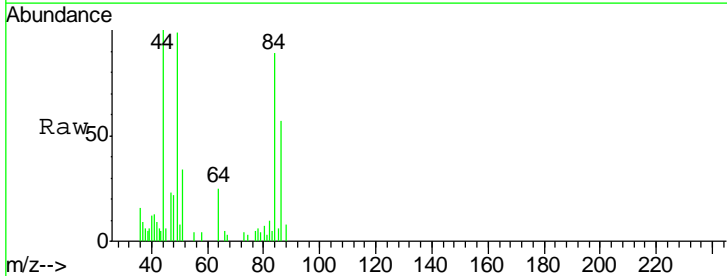
**Instrument :**  
 MSVOA\_X  
**ClientSampled :**  
 BLACK-BROWN-SOIL

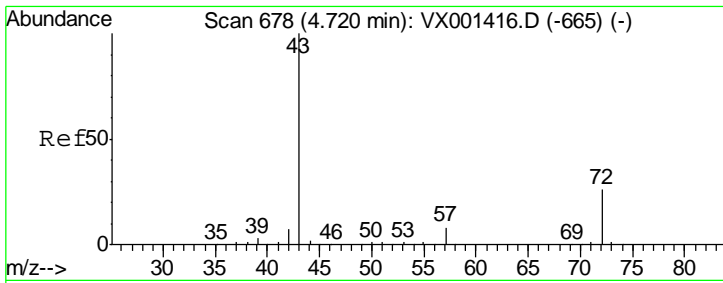
Tgt Ion: 43 Resp: 5409  
 Ion Ratio Lower Upper  
 43 100  
 74 21.1 18.6 27.8



#20  
 Methylene Chloride  
 Concen: 0.77 ug/l  
 RT: 2.87 min Scan# 374  
 Delta R.T. 0.01 min  
 Lab File: VX001590.D  
 Acq: 10 May 2018 07:20

Tgt Ion: 84 Resp: 2731  
 Ion Ratio Lower Upper  
 84 100  
 49 112.0 96.6 144.8  
 51 38.5 29.0 43.4  
 86 64.2 52.2 78.4

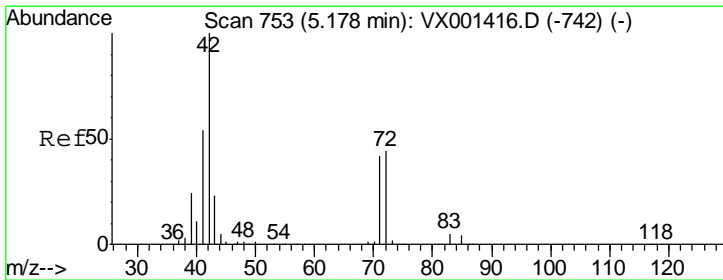
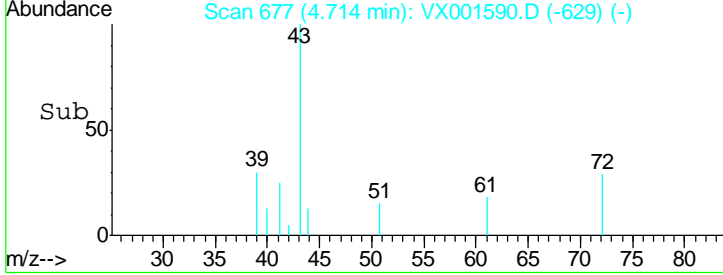
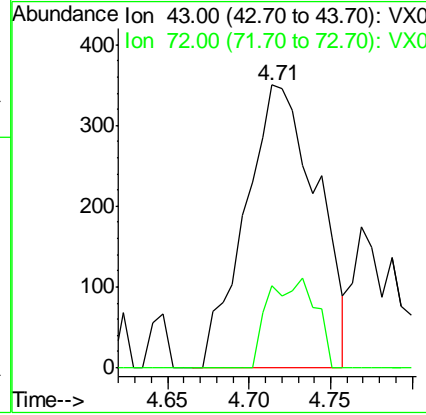
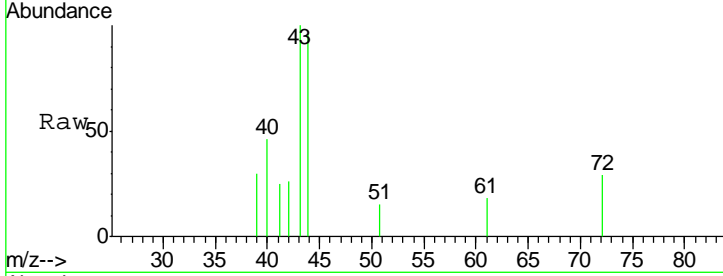




#25  
 2-Butanone  
 Concen: 0.41 ug/l  
 RT: 4.71 min Scan# 677  
 Delta R.T. -0.01 min  
 Lab File: VX001590.D  
 Acq: 10 May 2018 07:20

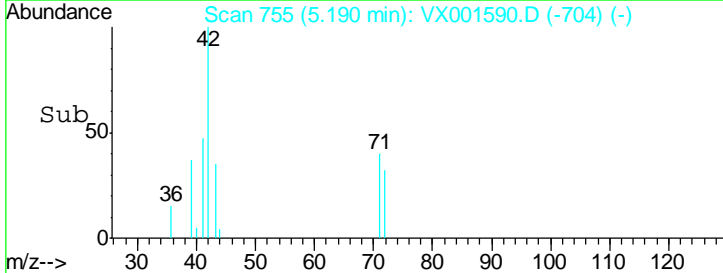
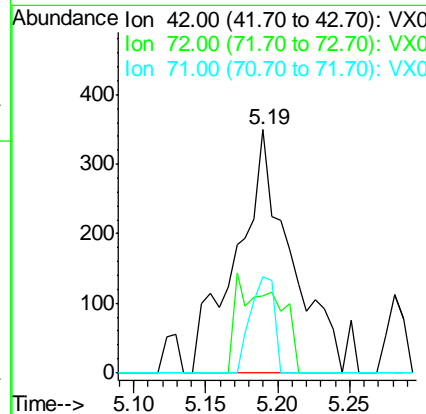
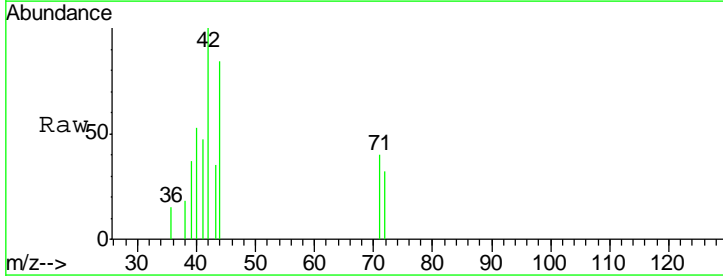
**Instrument :**  
 MSVOA\_X  
**ClientSampled :**  
 BLACK-BROWN-SOIL

Tgt Ion	Resp	Lower	Upper
43	1070		
72	28.9	20.7	31.1

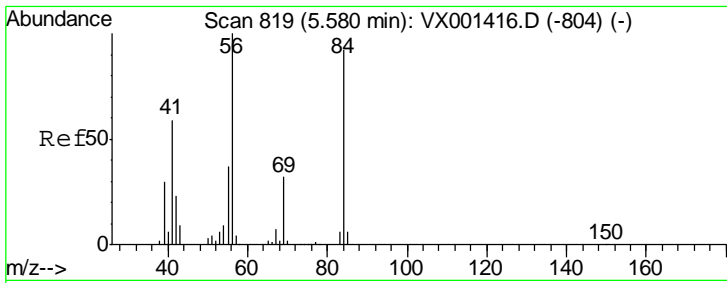


#29  
 Tetrahydrofuran  
 Concen: 0.55 ug/l  
 RT: 5.19 min Scan# 755  
 Delta R.T. 0.01 min  
 Lab File: VX001590.D  
 Acq: 10 May 2018 07:20

Tgt Ion	Resp	Lower	Upper
42	907		
72	14.0	35.4	53.2#
71	17.4	33.0	49.4#



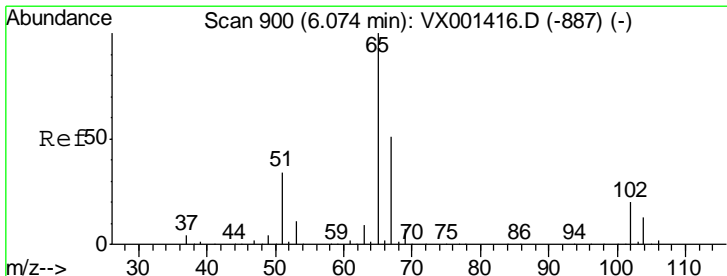
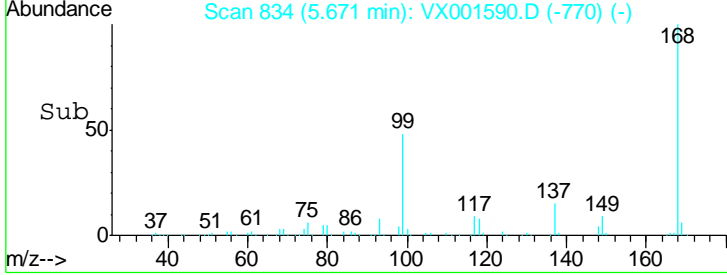
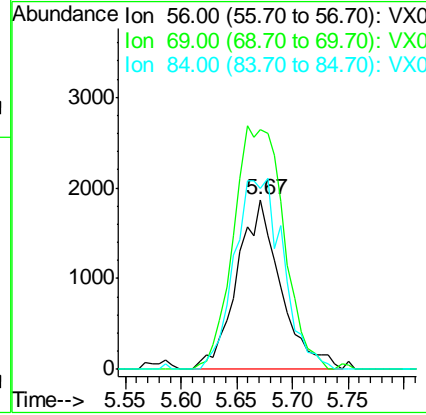
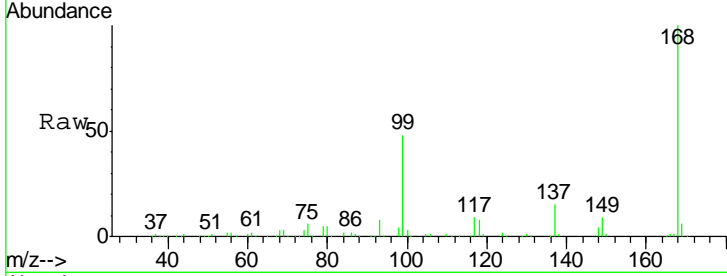




#31  
 Cyclohexane  
 Concen: 1.00 ug/l  
 RT: 5.67 min Scan# 834  
 Delta R.T. 0.09 min  
 Lab File: VX001590.D  
 Acq: 10 May 2018 07:20

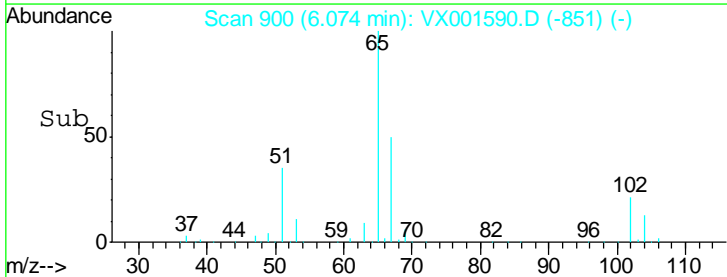
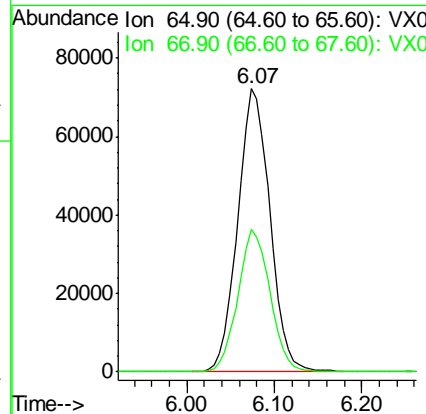
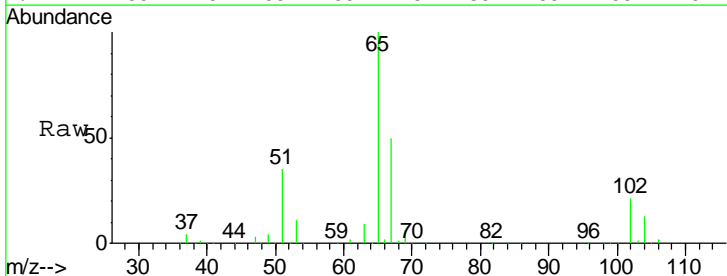
**Instrument :**  
 MSVOA\_X  
**ClientSampled :**  
 BLACK-BROWN-SOIL

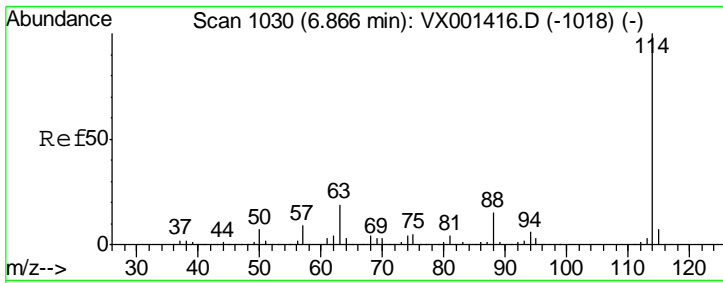
Tgt Ion	Resp	Lower	Upper
56	5100		
69	141.4	25.4	38.0#
84	106.2	73.8	110.8



#33  
 1,2-Dichloroethane-d4  
 Concen: 46.69 ug/l  
 RT: 6.07 min Scan# 900  
 Delta R.T. 0.00 min  
 Lab File: VX001590.D  
 Acq: 10 May 2018 07:20

Tgt Ion	Resp	Lower	Upper
65	184495		
67	50.2	0.0	101.8

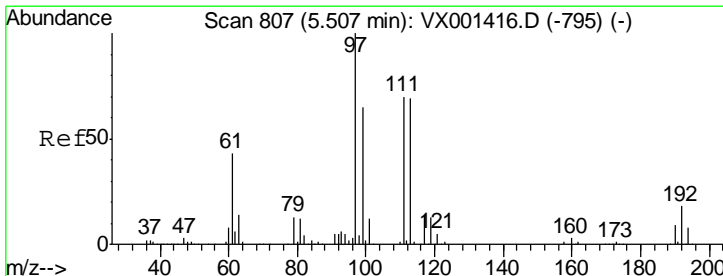
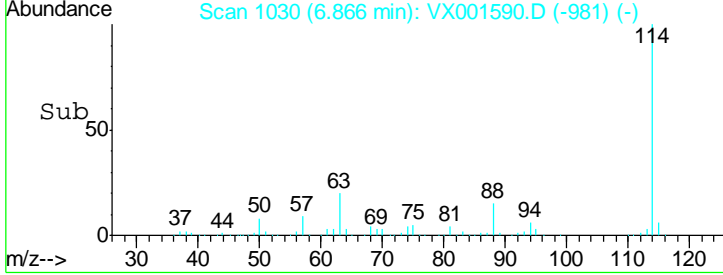
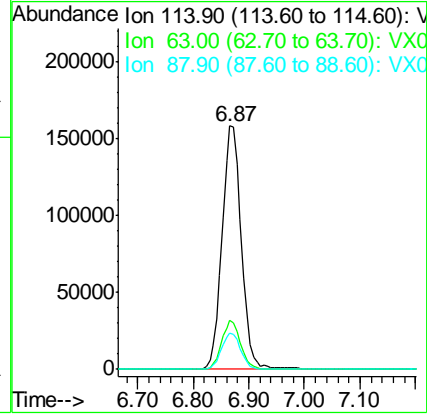
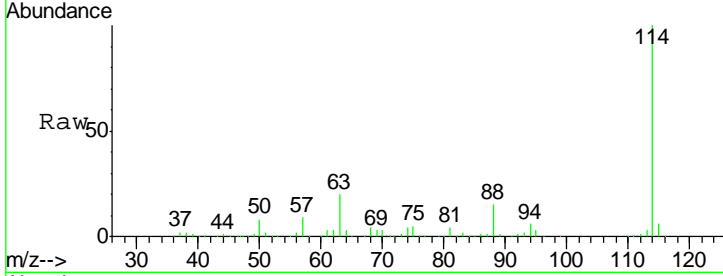




#34  
 1,4-Difluorobenzene  
 Concen: 50.00 ug/l  
 RT: 6.87 min Scan# 1030  
 Delta R.T. 0.00 min  
 Lab File: VX001590.D  
 Acq: 10 May 2018 07:20

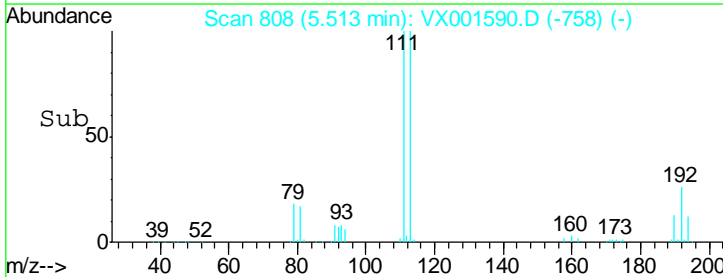
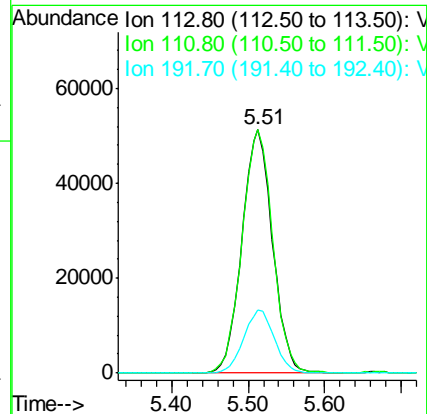
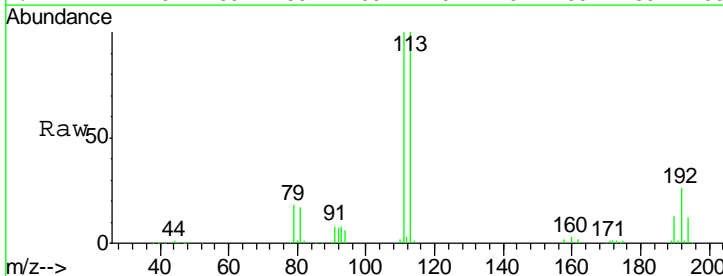
**Instrument :**  
 MSVOA\_X  
**ClientSampled :**  
 BLACK-BROWN-SOIL

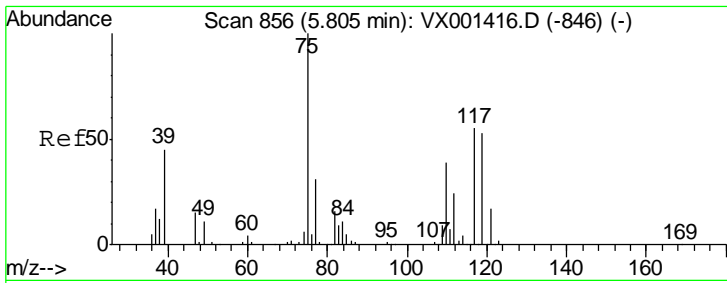
Tgt Ion	Resp	Lower	Upper
114	381191		
63	20.0	0.0	38.6
88	15.1	0.0	30.8



#35  
 Dibromofluoromethane  
 Concen: 41.86 ug/l  
 RT: 5.51 min Scan# 808  
 Delta R.T. 0.01 min  
 Lab File: VX001590.D  
 Acq: 10 May 2018 07:20

Tgt Ion	Resp	Lower	Upper
113	141941		
111	101.0	82.2	123.2
192	26.1	21.4	32.0

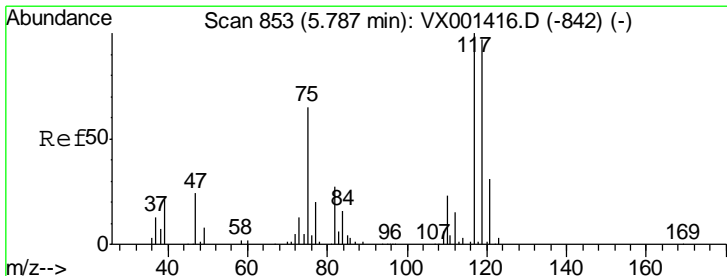
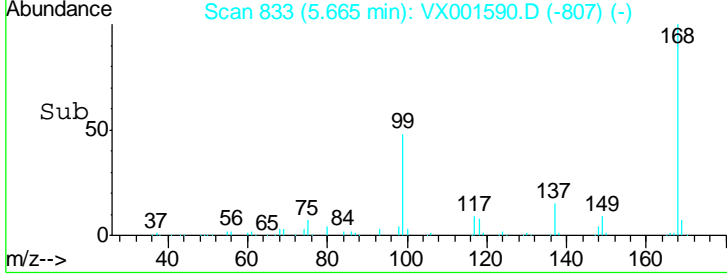
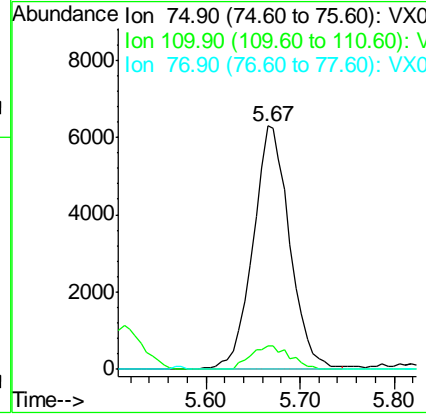
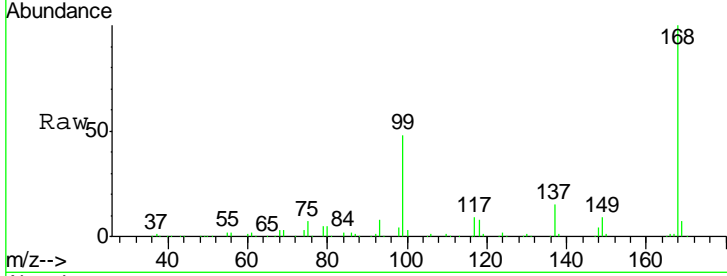




#36  
 1,1-Dichloropropene  
 Concen: 3.55 ug/l  
 RT: 5.67 min Scan# 833  
 Delta R.T. -0.14 min  
 Lab File: VX001590.D  
 Acq: 10 May 2018 07:20

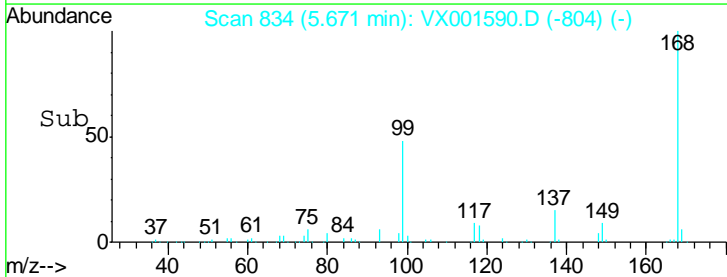
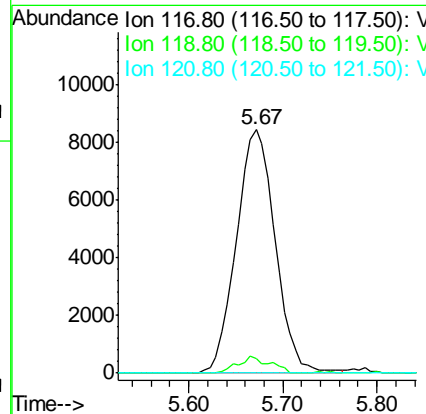
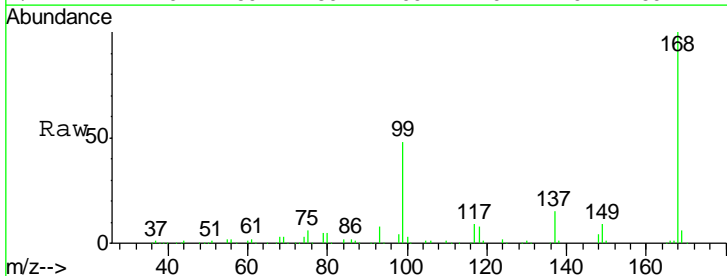
**Instrument :**  
 MSVOA\_X  
**ClientSampled :**  
 BLACK-BROWN-SOIL

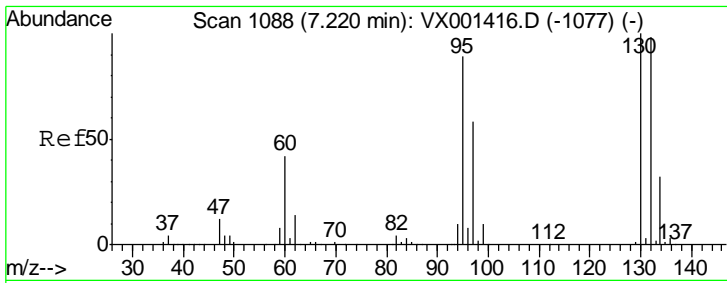
Tgt Ion	Resp	Lower	Upper
75	17213		
110	10.2	18.9	56.7#
77	0.0	24.9	37.3#



#38  
 Carbon Tetrachloride  
 Concen: 4.68 ug/l  
 RT: 5.67 min Scan# 834  
 Delta R.T. -0.12 min  
 Lab File: VX001590.D  
 Acq: 10 May 2018 07:20

Tgt Ion	Resp	Lower	Upper
117	24210		
119	5.9	77.0	115.6#
121	0.0	25.1	37.7#

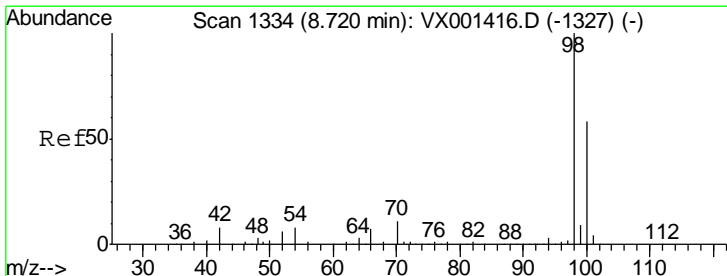
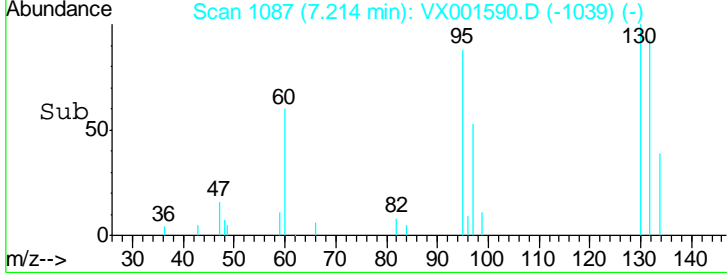
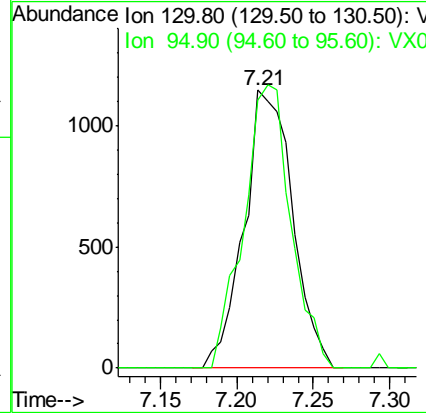
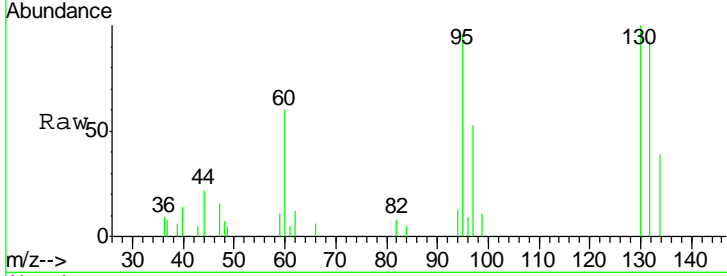




#44  
 Trichloroethene  
 Concen: 0.58 ug/l  
 RT: 7.21 min Scan# 1087  
 Delta R.T. -0.01 min  
 Lab File: VX001590.D  
 Acq: 10 May 2018 07:20

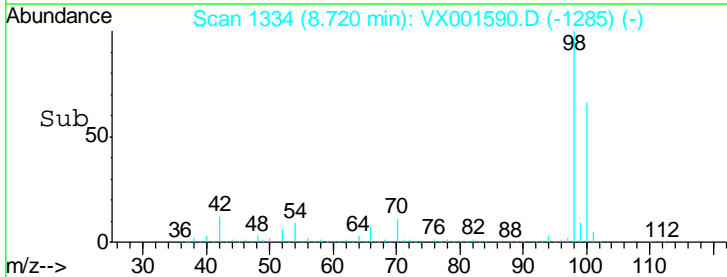
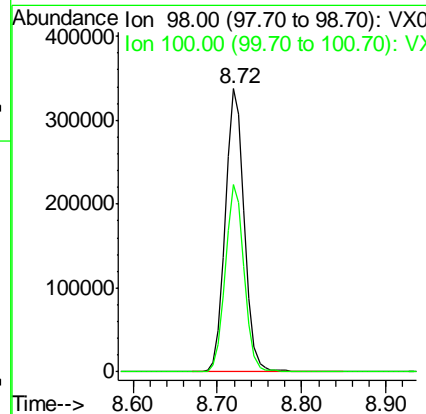
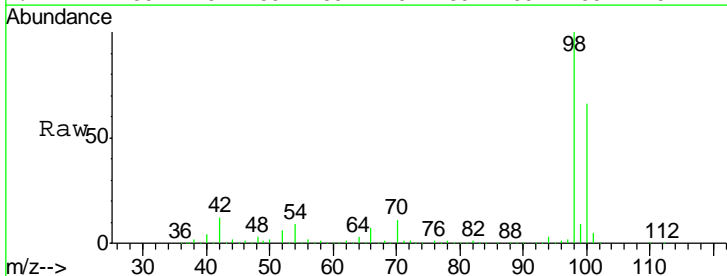
**Instrument :**  
 MSVOA\_X  
**ClientSampled :**  
 BLACK-BROWN-SOIL

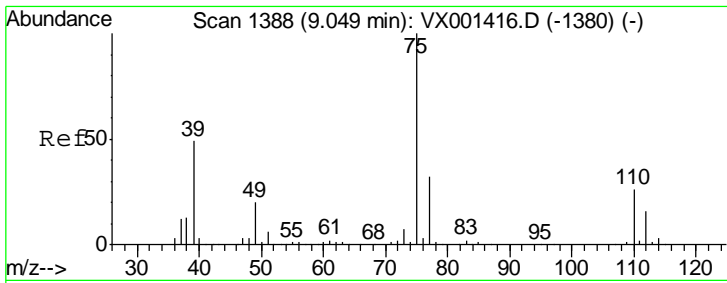
Tgt Ion: 130 Resp: 2526  
 Ion Ratio Lower Upper  
 130 100  
 95 96.3 0.0 178.4



#50  
 Toluene-d8  
 Concen: 42.53 ug/l  
 RT: 8.72 min Scan# 1334  
 Delta R.T. 0.00 min  
 Lab File: VX001590.D  
 Acq: 10 May 2018 07:20

Tgt Ion: 98 Resp: 526360  
 Ion Ratio Lower Upper  
 98 100  
 100 65.7 54.0 81.0

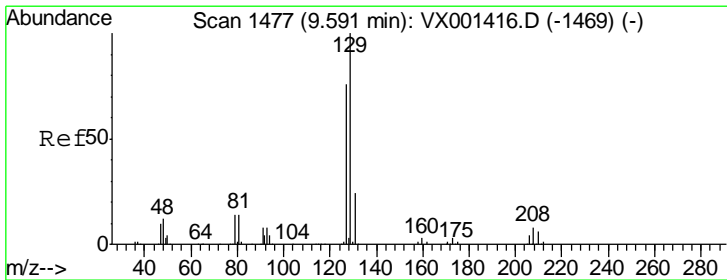
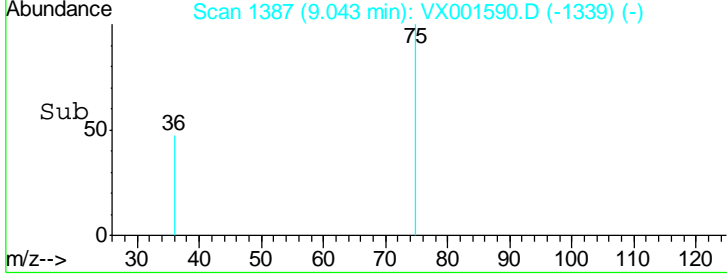
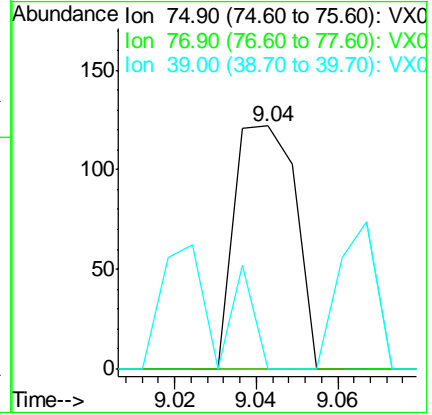
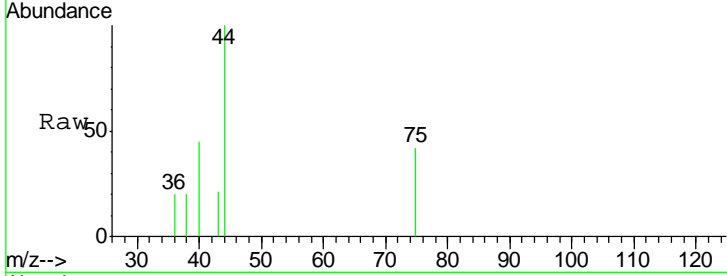




#54  
 cis-1,3-Dichloropropene  
 Concen: 2.29 ug/l  
 RT: 9.04 min Scan# 1387  
 Delta R.T. -0.01 min  
 Lab File: VX001590.D  
 Acq: 10 May 2018 07:20

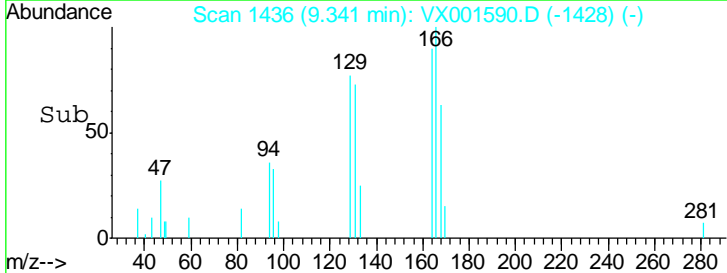
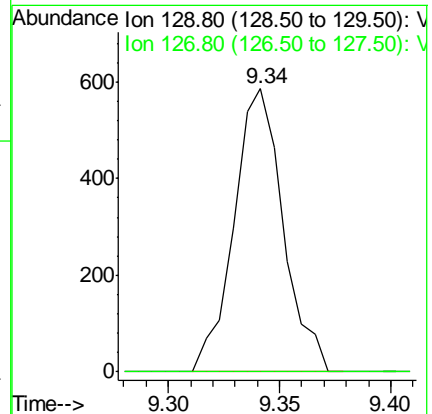
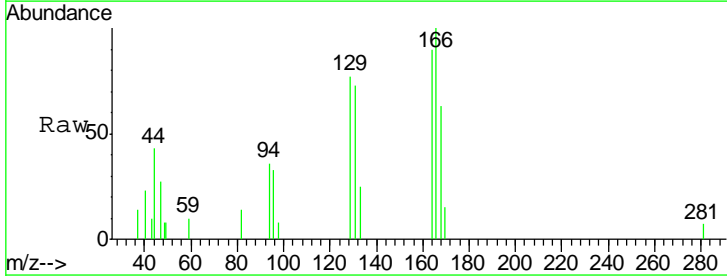
**Instrument :**  
 MSVOA\_X  
**ClientSampled :**  
 BLACK-BROWN-SOIL

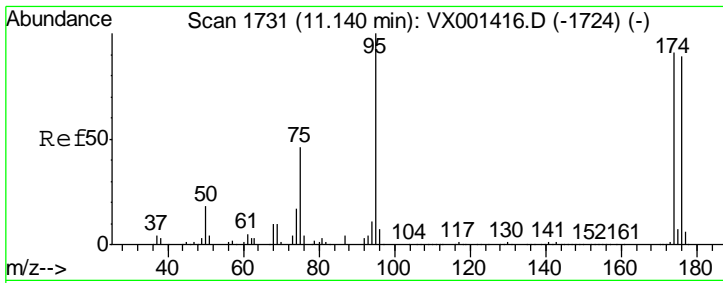
Tgt Ion	Resp	Lower	Upper
75	100		
77	0.0	25.5	38.3#
39	0.0	38.9	58.3#



#60  
 Dibromochloromethane  
 Concen: 0.24 ug/l  
 RT: 9.34 min Scan# 1436  
 Delta R.T. -0.25 min  
 Lab File: VX001590.D  
 Acq: 10 May 2018 07:20

Tgt Ion	Resp	Lower	Upper
129	100		
127	0.0	38.1	114.5#



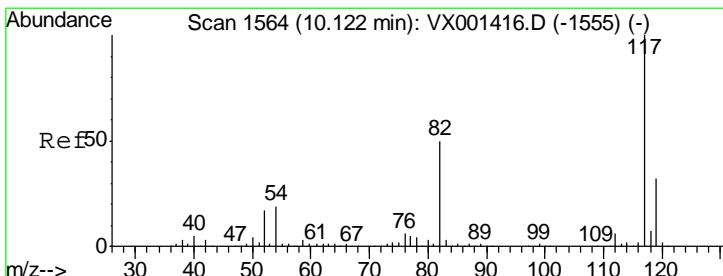
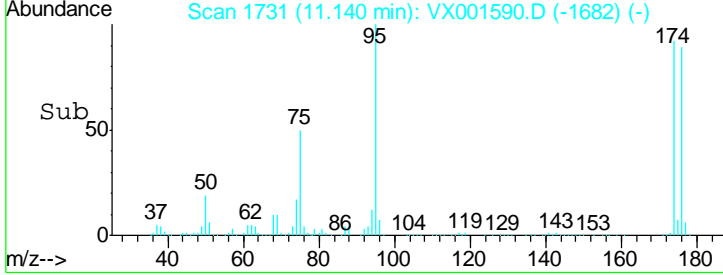
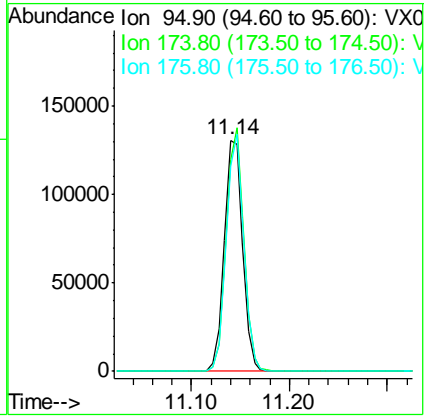
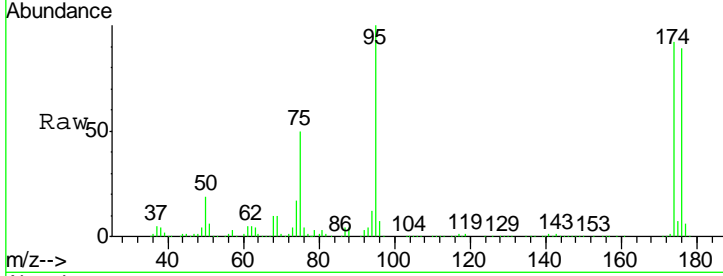


#62  
 4-Bromofluorobenzene  
 Concen: 35.86 ug/l  
 RT: 11.14 min Scan# 1731  
 Delta R.T. 0.00 min  
 Lab File: VX001590.D  
 Acq: 10 May 2018 07:20

Instrument :  
 MSVOA\_X  
 ClientSampled :  
 BLACK-BROWN-SOIL

Tgt Ion: 95 Resp: 170391

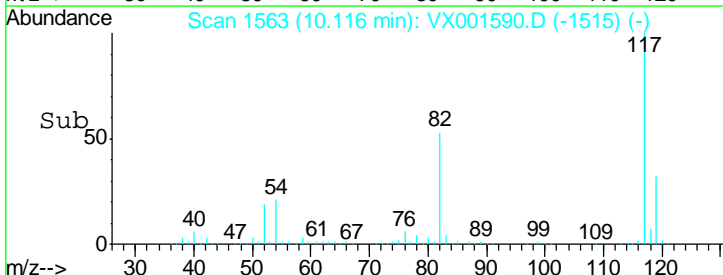
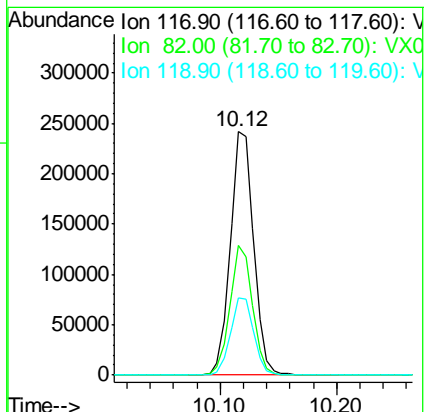
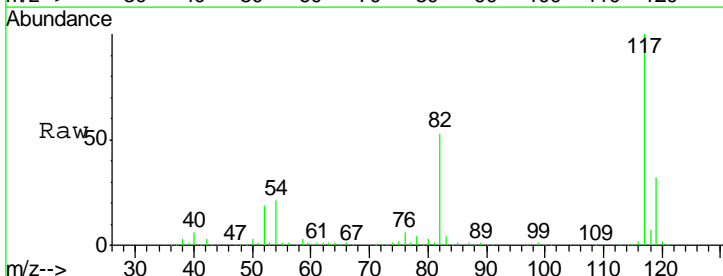
Ion	Ratio	Lower	Upper
95	100		
174	100.6	0.0	202.0
176	97.4	0.0	197.4

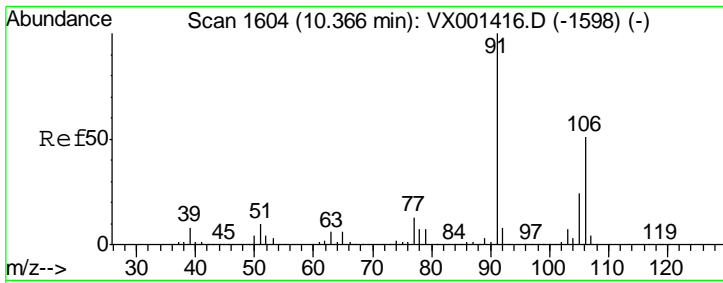


#63  
 Chlorobenzene-d5  
 Concen: 50.00 ug/l  
 RT: 10.12 min Scan# 1563  
 Delta R.T. -0.01 min  
 Lab File: VX001590.D  
 Acq: 10 May 2018 07:20

Tgt Ion: 117 Resp: 336645

Ion	Ratio	Lower	Upper
117	100		
82	53.1	40.0	60.0
119	31.6	25.8	38.8

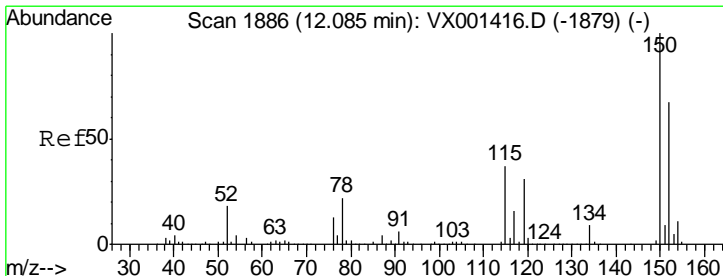
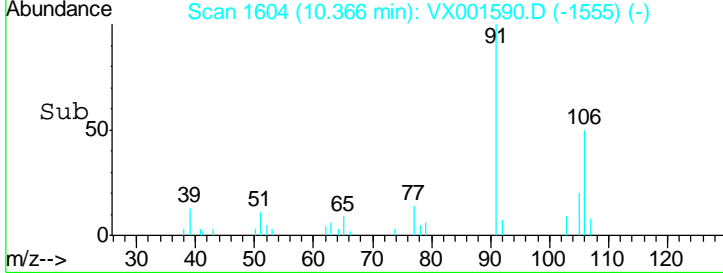
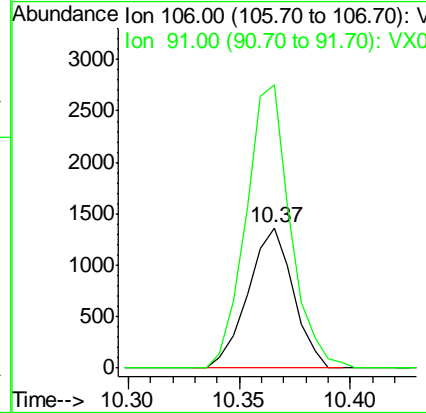
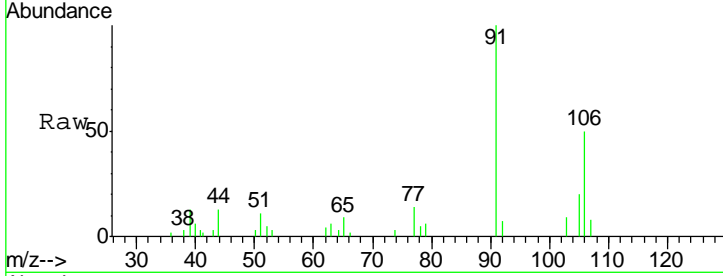




#68  
 m/p-Xylenes  
 Concen: 0.30 ug/l  
 RT: 10.37 min Scan# 1604  
 Delta R.T. 0.00 min  
 Lab File: VX001590.D  
 Acq: 10 May 2018 07:20

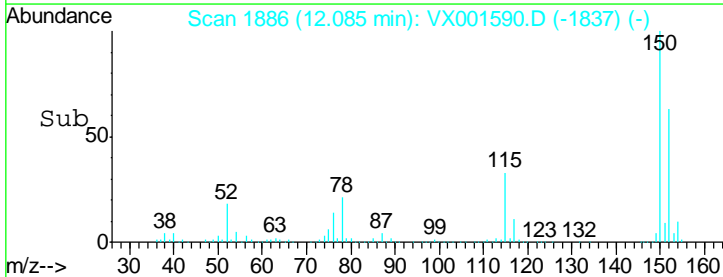
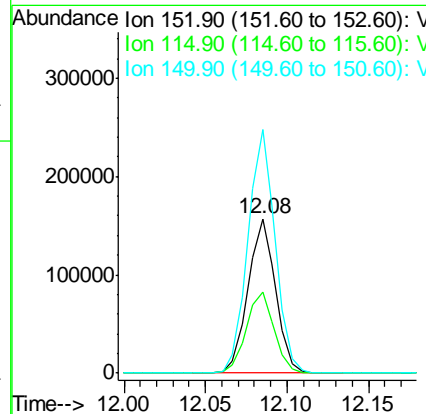
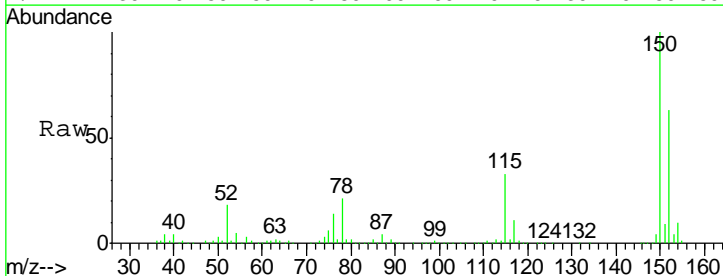
**Instrument :**  
 MSVOA\_X  
**ClientSampled :**  
 BLACK-BROWN-SOIL

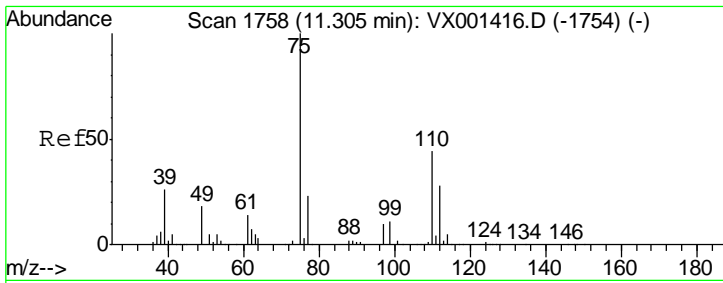
Tgt Ion:106 Resp: 1925  
 Ion Ratio Lower Upper  
 106 100  
 91 198.2 157.5 236.3



#72  
 1,4-Dichlorobenzene-d4  
 Concen: 50.00 ug/l  
 RT: 12.08 min Scan# 1886  
 Delta R.T. 0.00 min  
 Lab File: VX001590.D  
 Acq: 10 May 2018 07:20

Tgt Ion:152 Resp: 184416  
 Ion Ratio Lower Upper  
 152 100  
 115 53.2 37.7 113.1  
 150 156.3 0.0 349.4

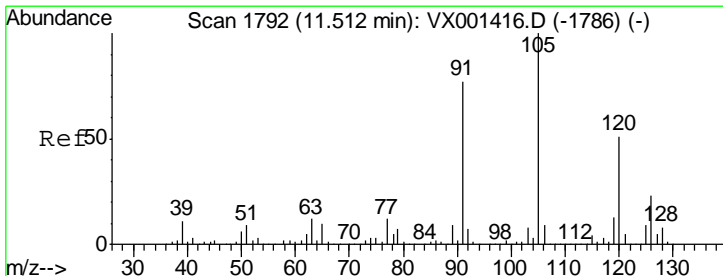
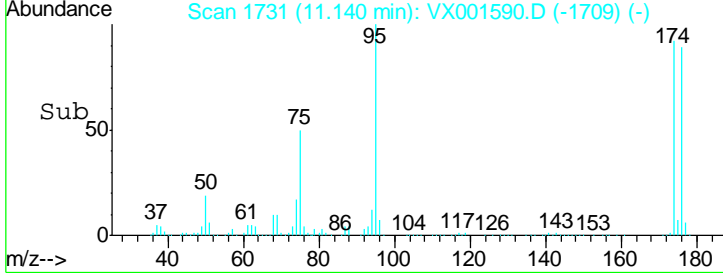
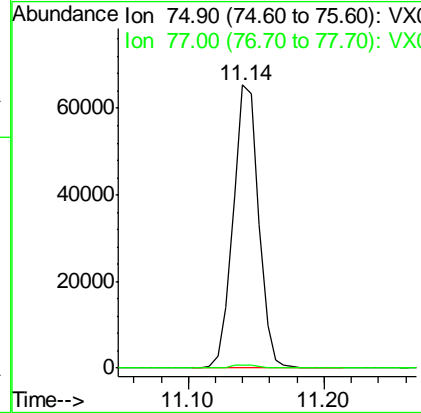
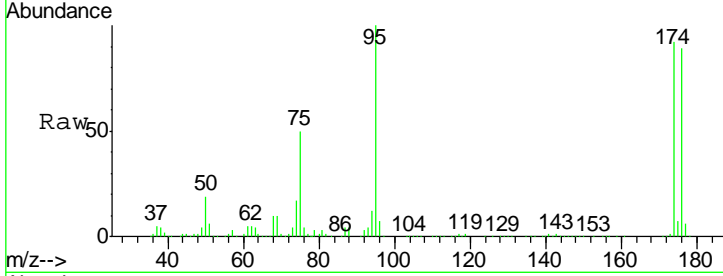




#76  
 1,2,3-Trichloropropane  
 Concen: 22.71 ug/l  
 RT: 11.14 min Scan# 1731  
 Delta R.T. -0.16 min  
 Lab File: VX001590.D  
 Acq: 10 May 2018 07:20

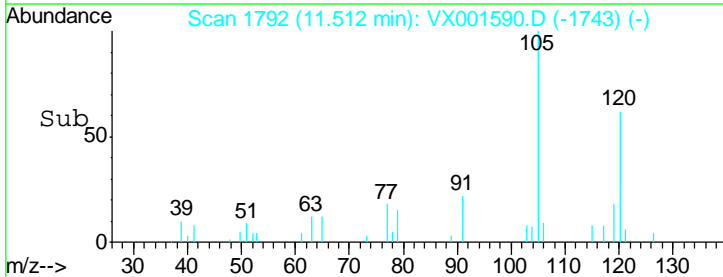
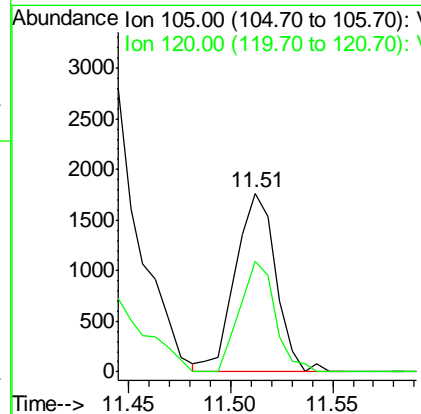
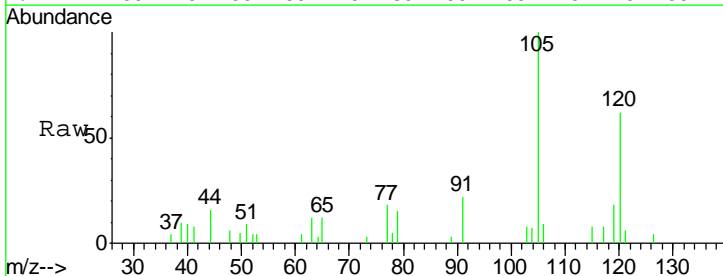
Instrument : MSVOA\_X  
 ClientSampled : BLACK-BROWN-SOIL

Tgt Ion: 75 Resp: 84937  
 Ion Ratio Lower Upper  
 75 100  
 77 1.3 19.6 58.7#

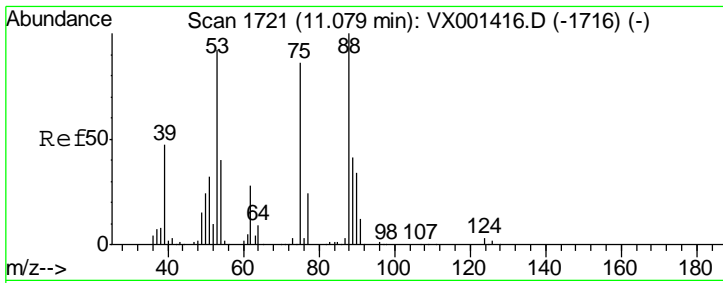


#80  
 1,3,5-Trimethylbenzene  
 Concen: 0.23 ug/l  
 RT: 11.51 min Scan# 1792  
 Delta R.T. 0.00 min  
 Lab File: VX001590.D  
 Acq: 10 May 2018 07:20

Tgt Ion: 105 Resp: 2423  
 Ion Ratio Lower Upper  
 105 100  
 120 54.5 25.7 77.1



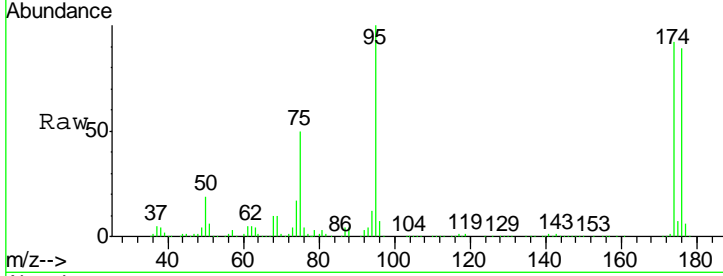




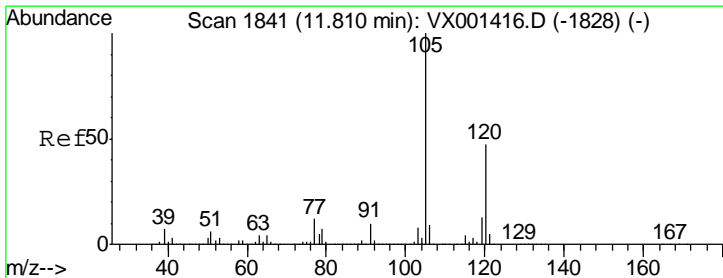
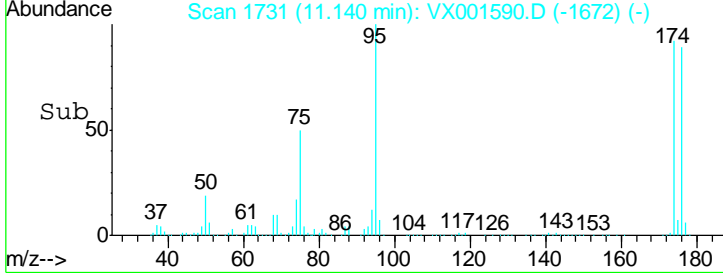
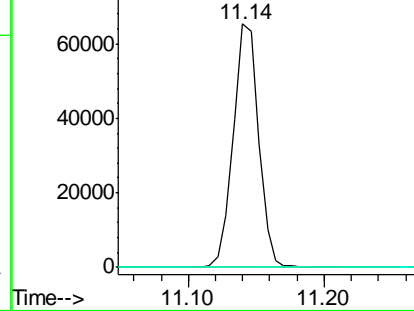
#81  
 trans-1,4-Dichloro-2-butene  
 Concen: 70.48 ug/l  
 RT: 11.14 min Scan# 1731  
 Delta R.T. 0.06 min  
 Lab File: VX001590.D  
 Acq: 10 May 2018 07:20

Instrument :  
 MSVOA\_X  
 ClientSampled :  
 BLACK-BROWN-SOIL

Tgt Ion	Resp	Lower	Upper
75	100		
53	0.1	84.5	126.7#
89	0.0	39.5	59.3#

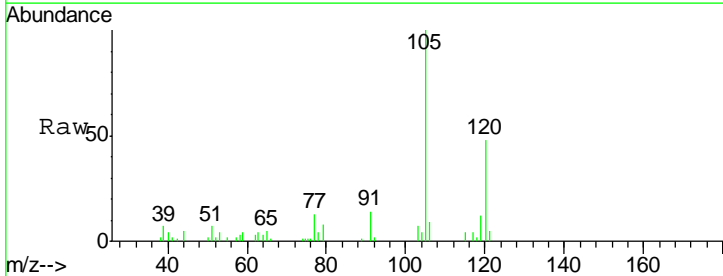


Abundance Ion 74.90 (74.60 to 75.60): VX0  
 Ion 53.00 (52.70 to 53.70): VX0  
 Ion 88.90 (88.60 to 89.60): VX0

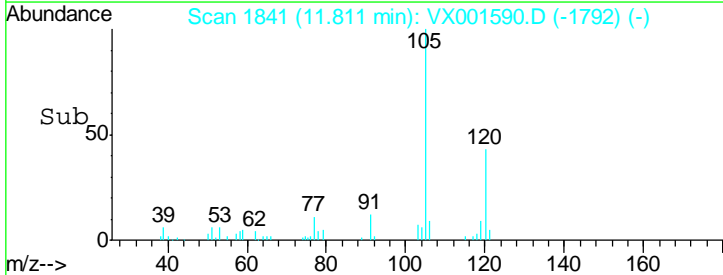
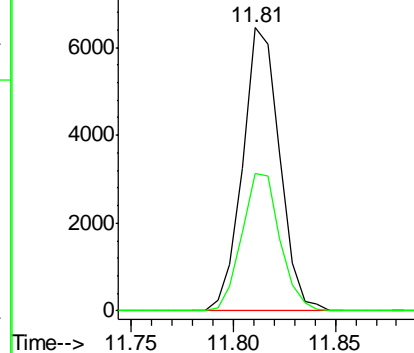


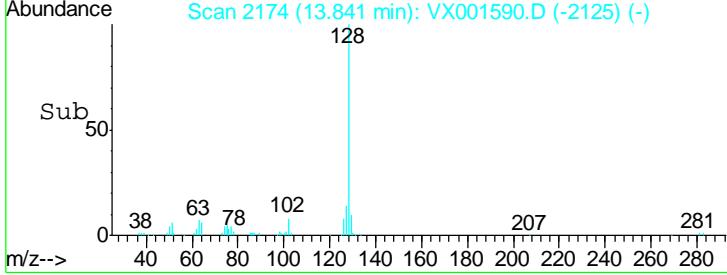
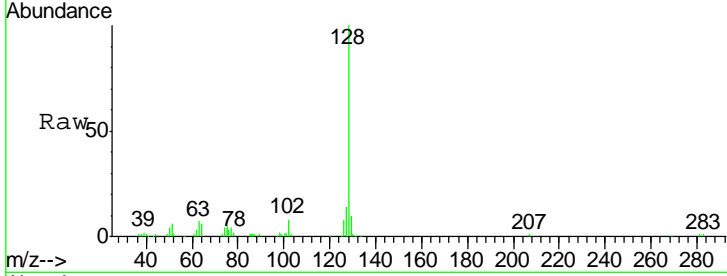
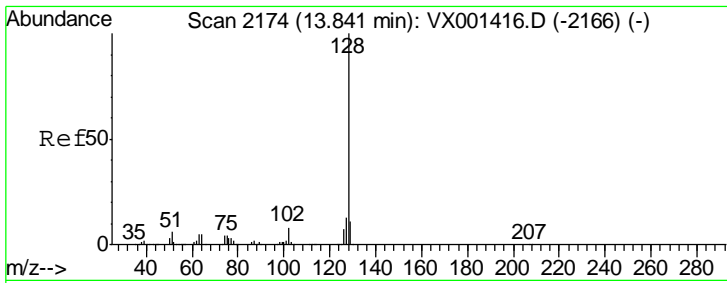
#84  
 1,2,4-Trimethylbenzene  
 Concen: 0.74 ug/l  
 RT: 11.81 min Scan# 1841  
 Delta R.T. 0.00 min  
 Lab File: VX001590.D  
 Acq: 10 May 2018 07:20

Tgt Ion	Resp	Lower	Upper
105	100		
120	50.3	23.4	70.2



Abundance Ion 105.00 (104.70 to 105.70): V  
 Ion 120.00 (119.70 to 120.70): V





#95  
 Naphthalene  
 Concen: 1.61 ug/l  
 RT: 13.84 min Scan# 2174  
 Delta R.T. 0.00 min  
 Lab File: VX001590.D  
 Acq: 10 May 2018 07:20

**Instrument :**  
 MSVOA\_X  
**ClientSampled :**  
 BLACK-BROWN-SOIL

Tgt Ion	Resp	Lower	Upper
128	22039		
127	13.5	10.4	15.6
129	10.7	8.7	13.1

