

Data Path : W:\HPCHEM1\MSVOA X\DATA\VX051218\  
 Data File : VX001669.D  
 Acq On : 12 May 2018 16:16  
 Operator : JC/MD  
 Sample : J2741-05DL 5X  
 Misc : 5.0mL/MSVOA X/WATER  
 ALS Vial : 12 Sample Multiplier: 1

Instrument :  
 MSVOA\_X  
 ClientSampleID :  
 M-19-180501DL

Quant Time: May 14 07:13:44 2018  
 Quant Method : W:\HPCHEM1\MSVOA\_X\METHOD\82X050518W.M  
 Quant Title : SW846 8260  
 QLast Update : Sun May 06 07:59:25 2018  
 Response via : Initial Calibration

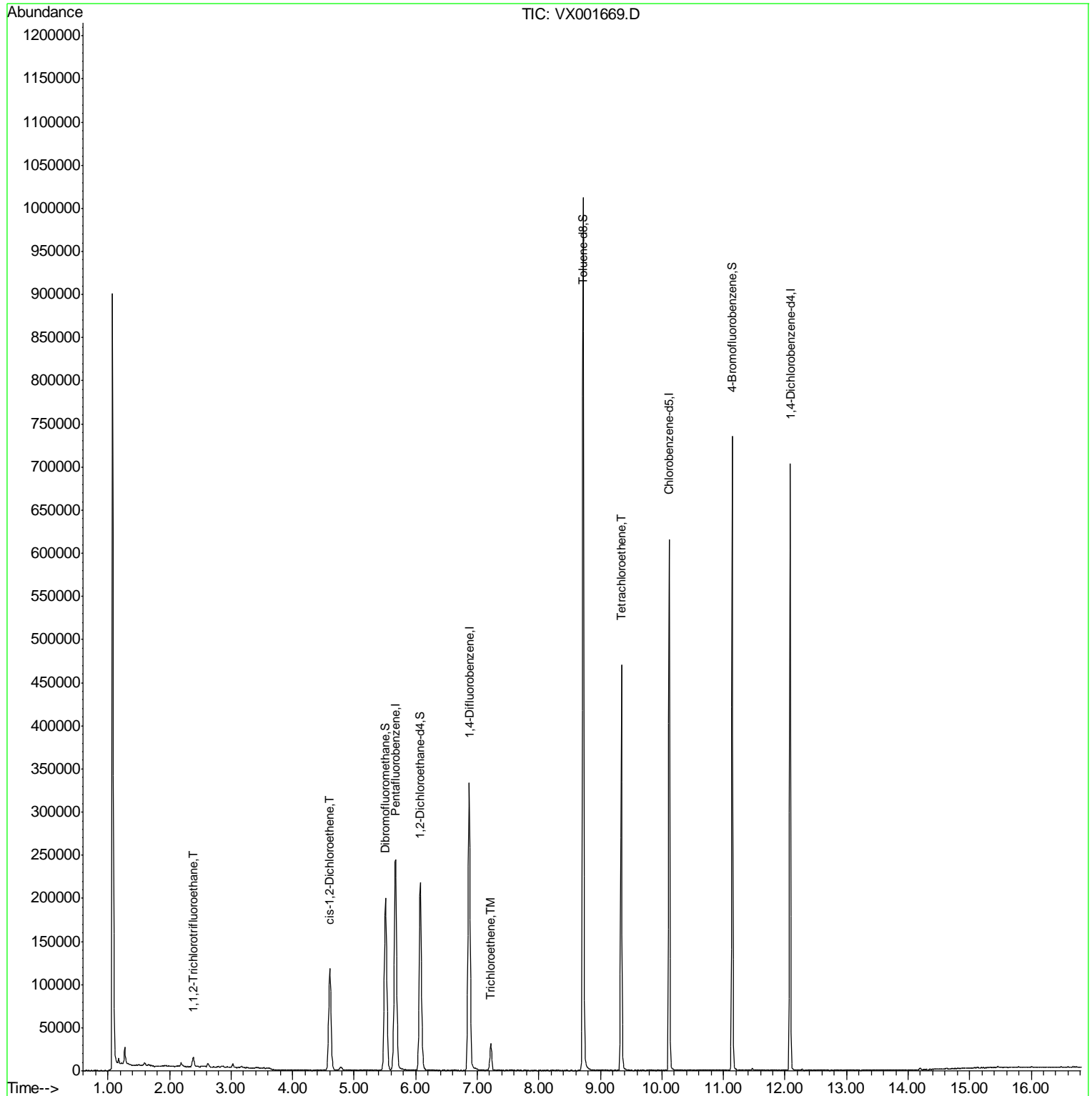
Internal Standards	R.T.	QIon	Response	Conc	Units	Dev(Min)
1) Pentafluorobenzene	5.67	168	260296	50.00	ug/l	0.00
34) 1,4-Difluorobenzene	6.87	114	348505	50.00	ug/l	0.00
63) Chlorobenzene-d5	10.12	117	298478	50.00	ug/l	0.00
72) 1,4-Dichlorobenzene-d4	12.09	152	155898	50.00	ug/l	0.00
System Monitoring Compounds						
33) 1,2-Dichloroethane-d4	6.07	65	208264	55.67	ug/l	0.00
Spiked Amount	50.000		Recovery	=	111.34%	
35) Dibromofluoromethane	5.51	113	165472	53.38	ug/l	0.00
Spiked Amount	50.000		Recovery	=	106.76%	
50) Toluene-d8	8.72	98	574435	50.77	ug/l	0.00
Spiked Amount	50.000		Recovery	=	101.54%	
62) 4-Bromofluorobenzene	11.14	95	182031	41.91	ug/l	0.00
Spiked Amount	50.000		Recovery	=	83.82%	
Target Compounds						
9) 1,1,2-Trichlorotrifluoroet	2.39	101	4471	1.42	ug/l	98
27) cis-1,2-Dichloroethene	4.60	96	76761	22.42	ug/l	86
44) Trichloroethene	7.22	130	12536	3.17	ug/l	100
64) Tetrachloroethene	9.34	164	101715	24.45	ug/l	99

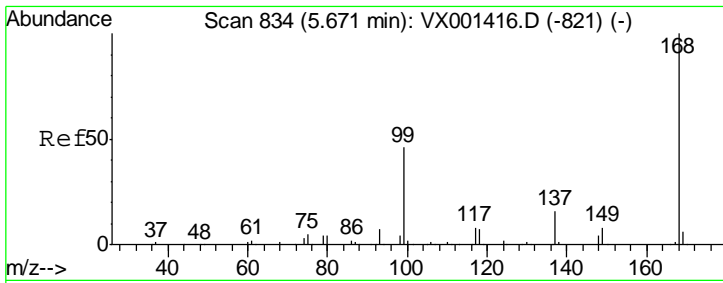
(#) = qualifier out of range (m) = manual integration (+) = signals summed

Data Path : W:\HPCHEM1\MSVOA X\DATA\VX051218\  
Data File : VX001669.D  
Acq On : 12 May 2018 16:16  
Operator : JC/MD  
Sample : J2741-05DL 5X  
Misc : 5.0mL/MSVOA X/WATER  
ALS Vial : 12 Sample Multiplier: 1

Instrument :  
MSVOA\_X  
ClientSampleId :  
M-19-180501DL

Quant Time: May 14 07:13:44 2018  
Quant Method : W:\HPCHEM1\MSVOA\_X\METHOD\82X050518W.M  
Quant Title : SW846 8260  
QLast Update : Sun May 06 07:59:25 2018  
Response via : Initial Calibration

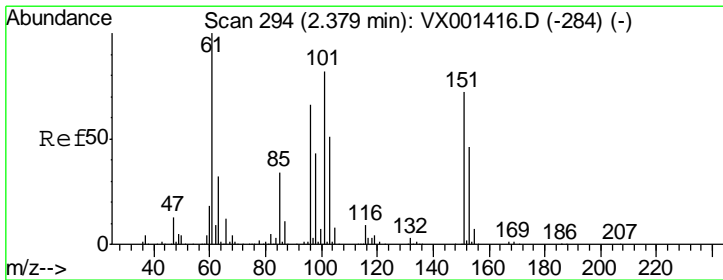
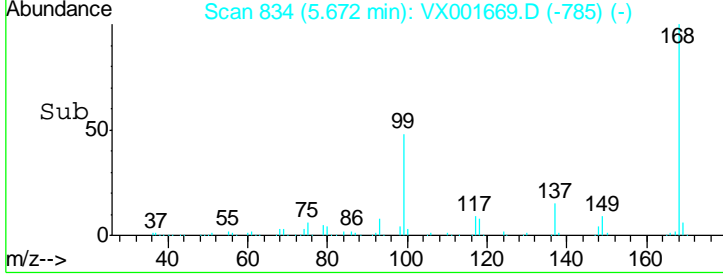
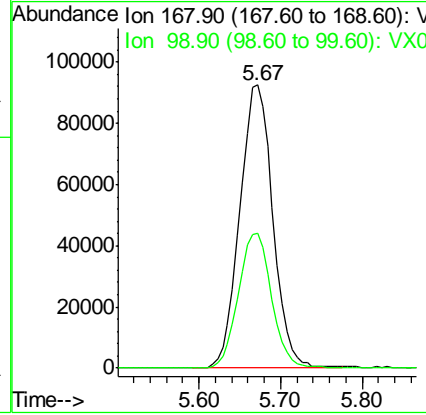
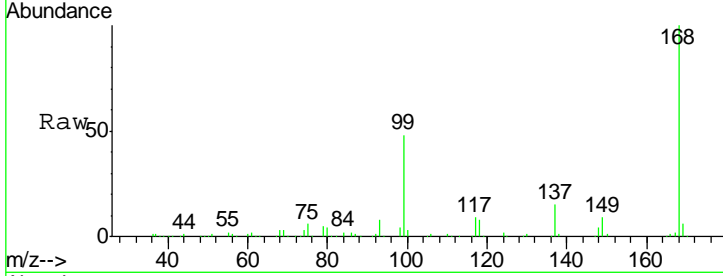




#1  
 Pentafluorobenzene  
 Concen: 50.00 ug/l  
 RT: 5.67 min Scan# 834  
 Delta R.T. 0.00 min  
 Lab File: VX001669.D  
 Acq: 12 May 2018 16:16

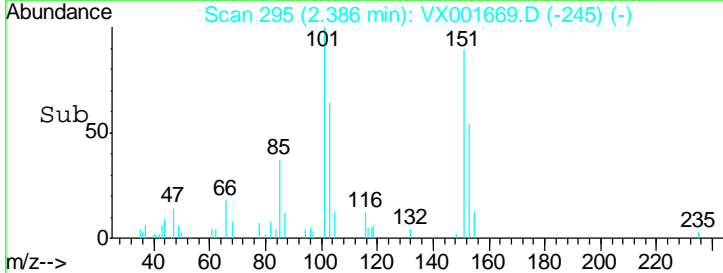
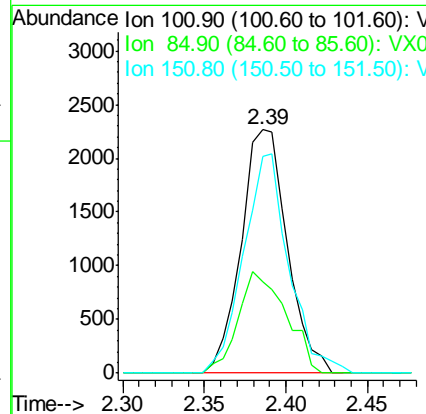
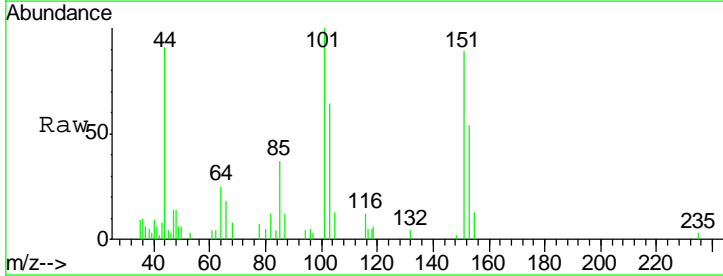
Instrument :  
 MSVOA\_X  
 ClientSampleID :  
 M-19-180501DL

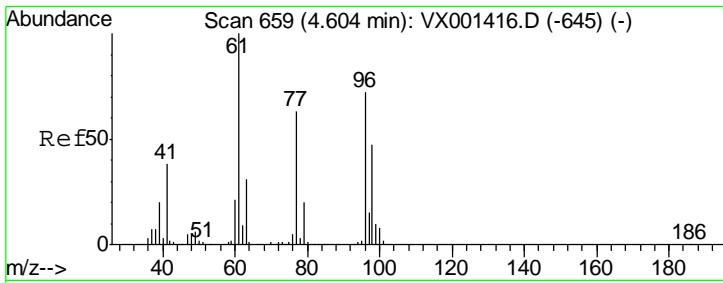
Tgt Ion	Resp	Lower	Upper
168	100		
99	47.6	36.6	54.8



#9  
 1,1,2-Trichlorotrifluoroethane  
 Concen: 1.42 ug/l  
 RT: 2.39 min Scan# 295  
 Delta R.T. 0.01 min  
 Lab File: VX001669.D  
 Acq: 12 May 2018 16:16

Tgt Ion	Resp	Lower	Upper
101	100		
85	43.1	33.7	50.5
151	88.3	72.3	108.5

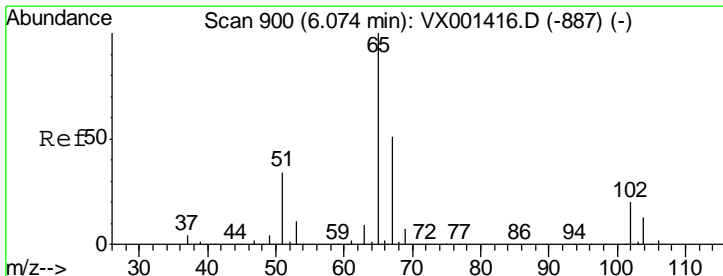
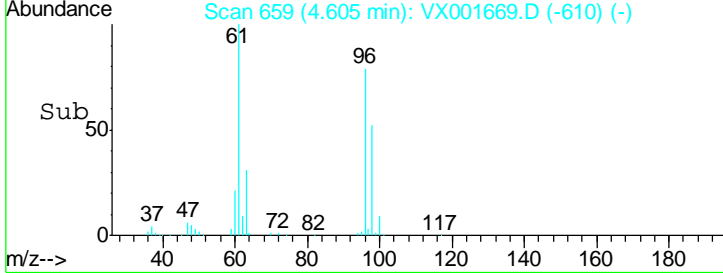
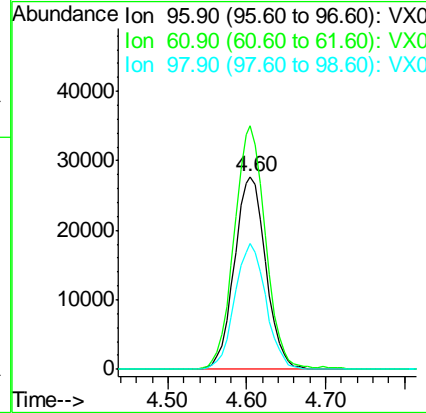
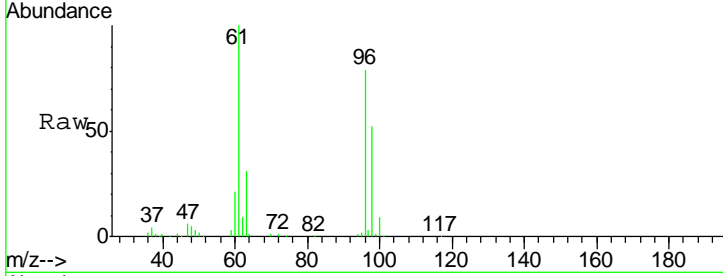




#27  
 cis-1,2-Dichloroethene  
 Concen: 22.42 ug/l  
 RT: 4.60 min Scan# 659  
 Delta R.T. 0.00 min  
 Lab File: VX001669.D  
 Acq: 12 May 2018 16:16

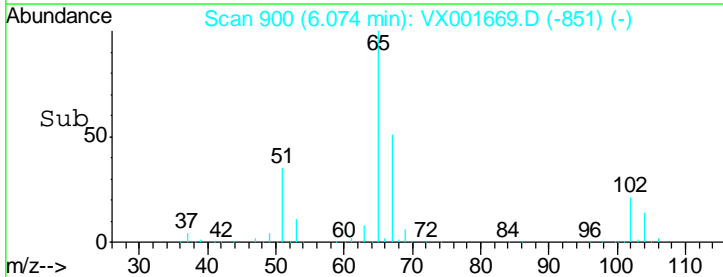
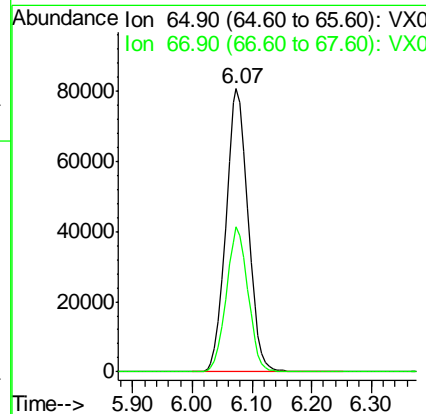
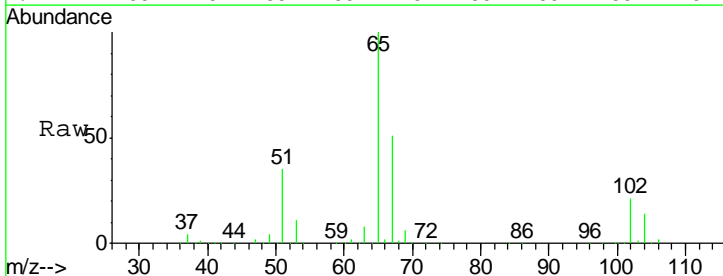
**Instrument :**  
 MSVOA\_X  
**ClientSampled :**  
 M-19-180501DL

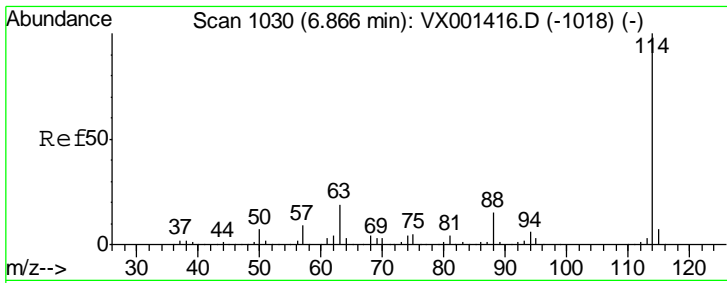
Tgt Ion	Resp	Lower	Upper
96	76761		
61	125.8	0.0	301.6
98	65.0	0.0	131.6



#33  
 1,2-Dichloroethane-d4  
 Concen: 55.67 ug/l  
 RT: 6.07 min Scan# 900  
 Delta R.T. 0.00 min  
 Lab File: VX001669.D  
 Acq: 12 May 2018 16:16

Tgt Ion	Resp	Lower	Upper
65	208264		
67	50.3	0.0	101.8

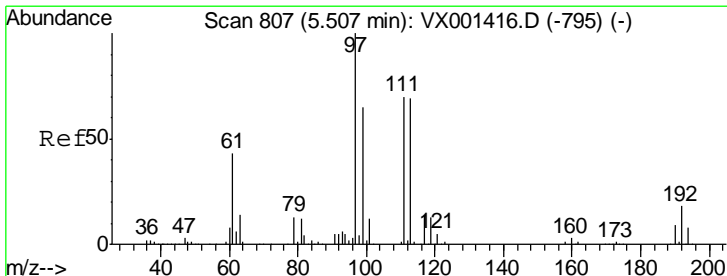
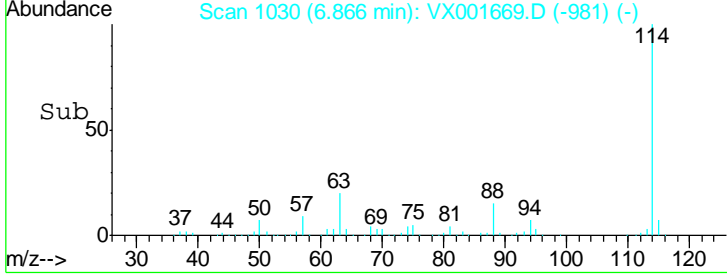
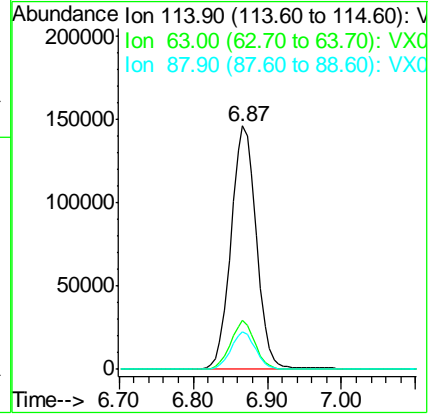
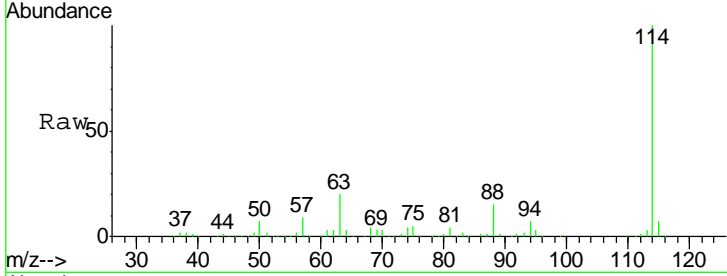




#34  
 1,4-Difluorobenzene  
 Concen: 50.00 ug/l  
 RT: 6.87 min Scan# 1030  
 Delta R.T. 0.00 min  
 Lab File: VX001669.D  
 Acq: 12 May 2018 16:16

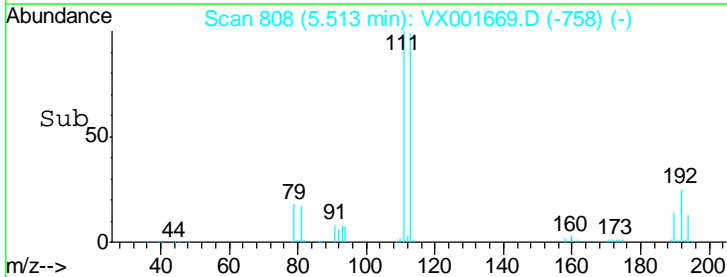
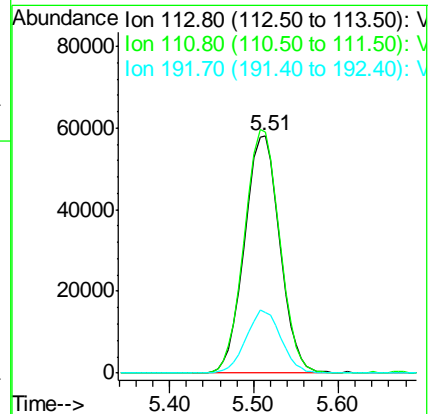
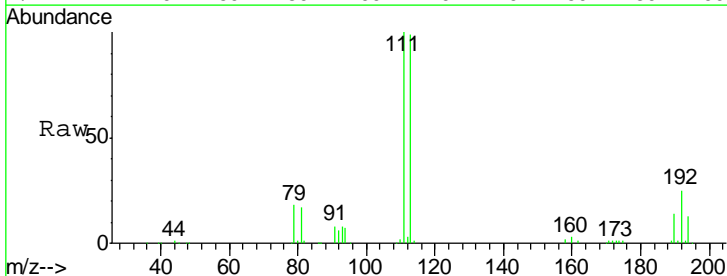
Instrument :  
 MSVOA\_X  
 ClientSampled :  
 M-19-180501DL

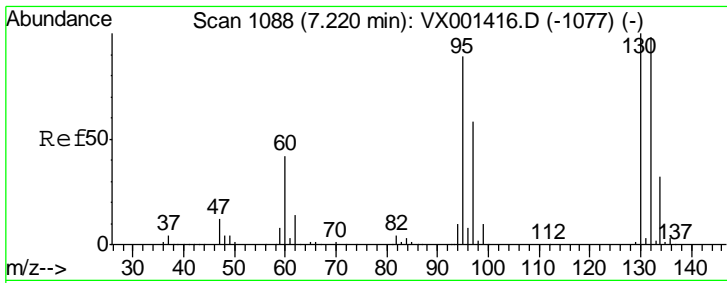
Tgt Ion	Resp	Lower	Upper
114	348505		
63	20.3	0.0	38.6
88	15.2	0.0	30.8



#35  
 Dibromofluoromethane  
 Concen: 53.38 ug/l  
 RT: 5.51 min Scan# 808  
 Delta R.T. 0.01 min  
 Lab File: VX001669.D  
 Acq: 12 May 2018 16:16

Tgt Ion	Resp	Lower	Upper
113	165472		
111	102.5	82.2	123.2
192	26.3	21.4	32.0

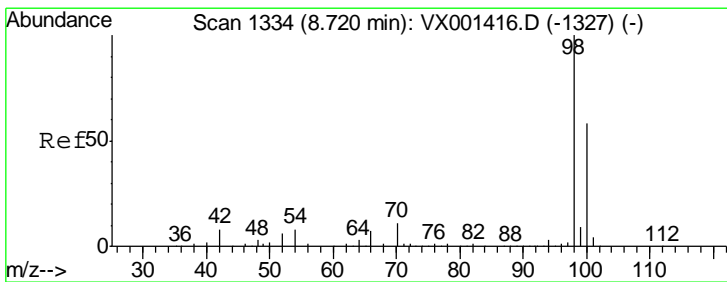
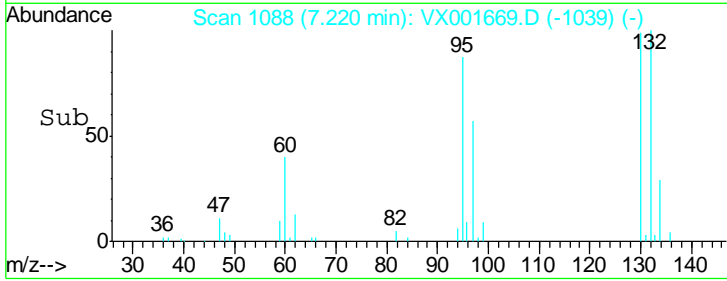
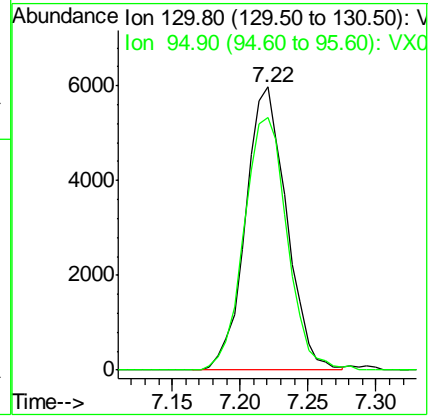
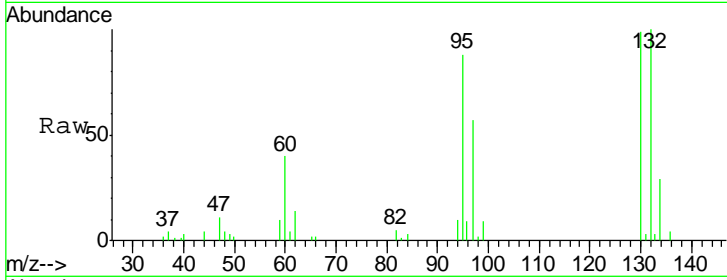




#44  
 Trichloroethene  
 Concen: 3.17 ug/l  
 RT: 7.22 min Scan# 1088  
 Delta R.T. 0.00 min  
 Lab File: VX001669.D  
 Acq: 12 May 2018 16:16

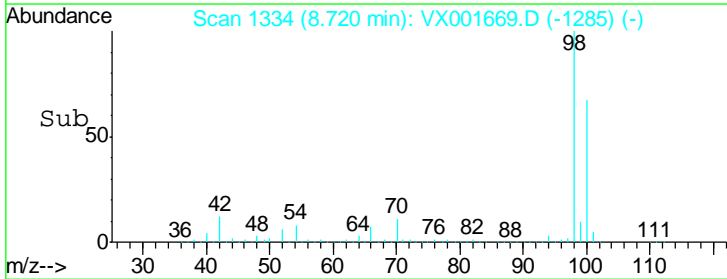
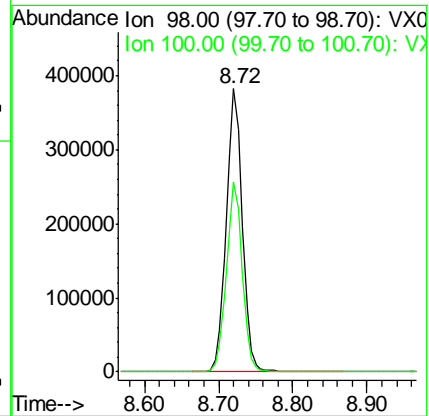
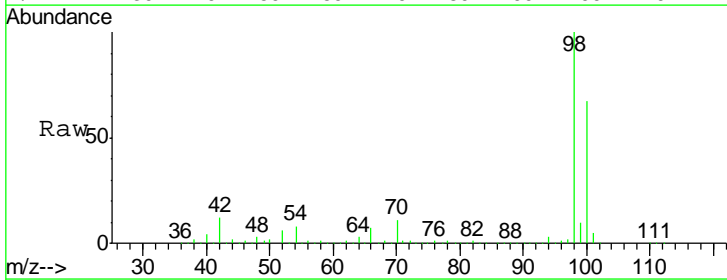
Instrument : MSVOA\_X  
 ClientSampled : M-19-180501DL

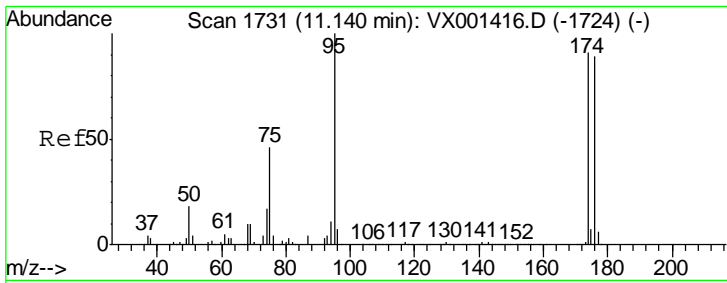
Tgt Ion: 130 Resp: 12536  
 Ion Ratio Lower Upper  
 130 100  
 95 89.2 0.0 178.4



#50  
 Toluene-d8  
 Concen: 50.77 ug/l  
 RT: 8.72 min Scan# 1334  
 Delta R.T. 0.00 min  
 Lab File: VX001669.D  
 Acq: 12 May 2018 16:16

Tgt Ion: 98 Resp: 574435  
 Ion Ratio Lower Upper  
 98 100  
 100 66.4 54.0 81.0

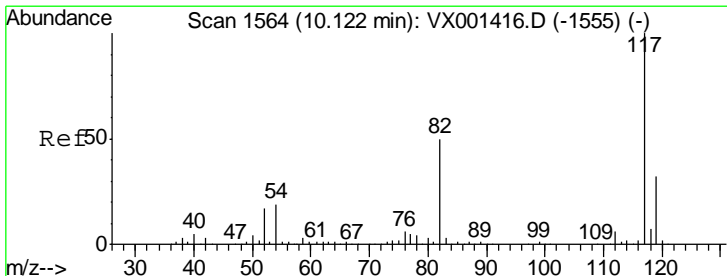
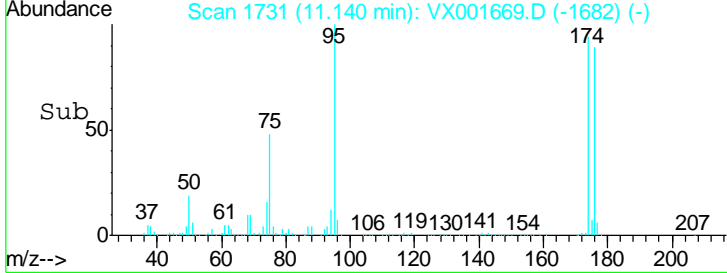
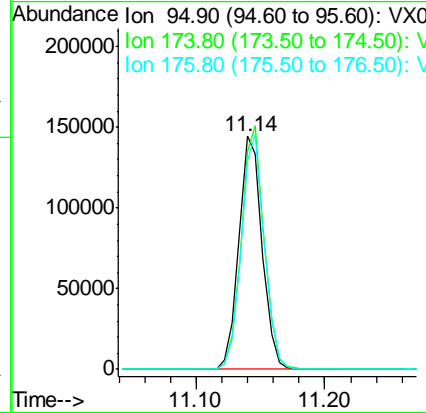
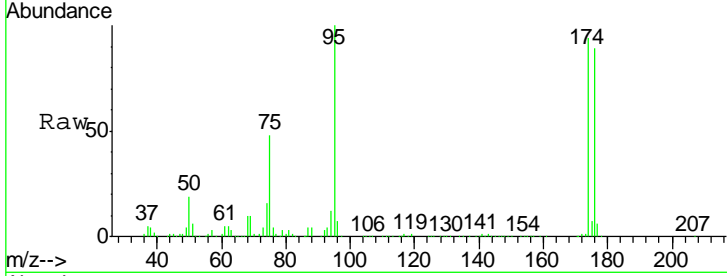




#62  
 4-Bromofluorobenzene  
 Concen: 41.91 ug/l  
 RT: 11.14 min Scan# 1731  
 Delta R.T. 0.00 min  
 Lab File: VX001669.D  
 Acq: 12 May 2018 16:16

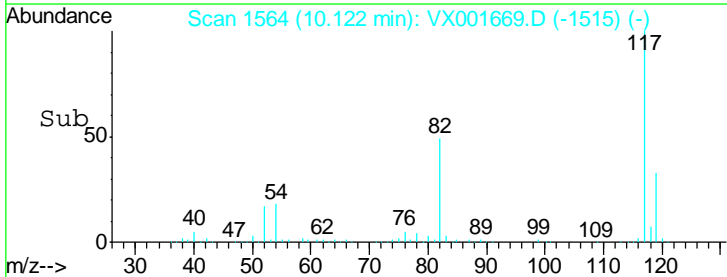
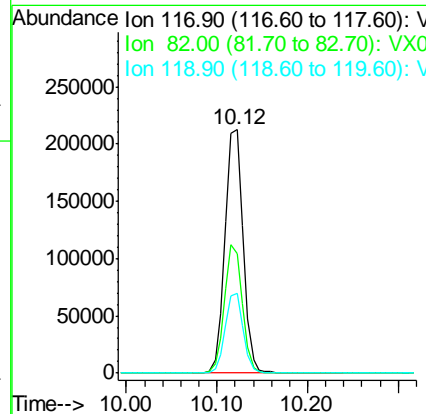
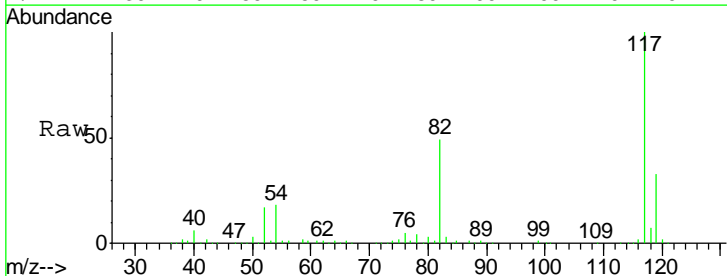
Instrument : MSVOA\_X  
 ClientSampled : M-19-180501DL

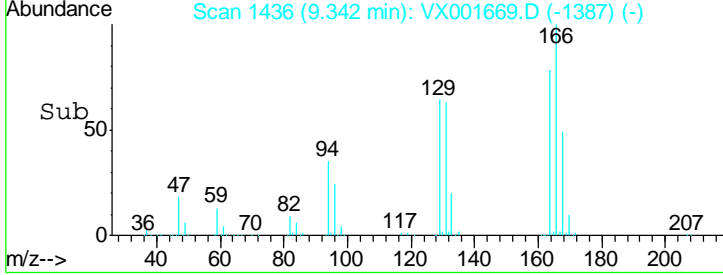
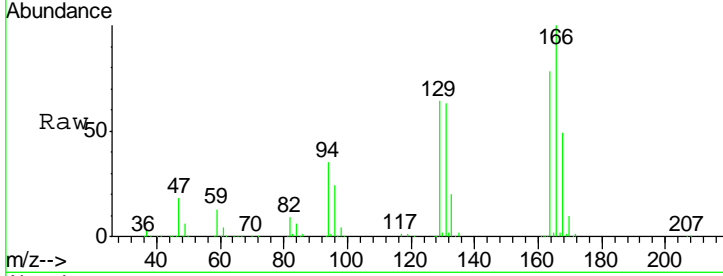
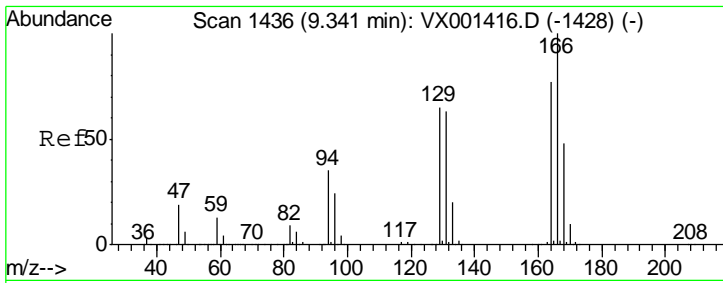
Tgt Ion	Resp	Lower	Upper
95	182031		
174	102.2	0.0	202.0
176	98.4	0.0	197.4



#63  
 Chlorobenzene-d5  
 Concen: 50.00 ug/l  
 RT: 10.12 min Scan# 1564  
 Delta R.T. 0.00 min  
 Lab File: VX001669.D  
 Acq: 12 May 2018 16:16

Tgt Ion	Resp	Lower	Upper
117	298478		
82	48.8	40.0	60.0
119	32.7	25.8	38.8

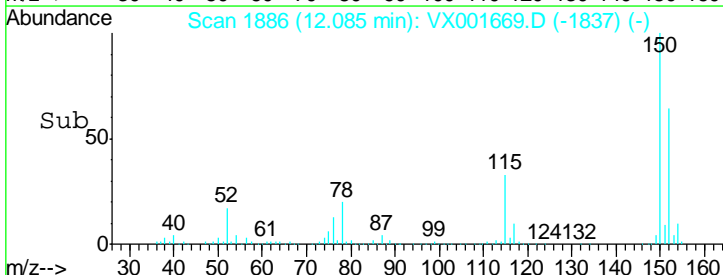
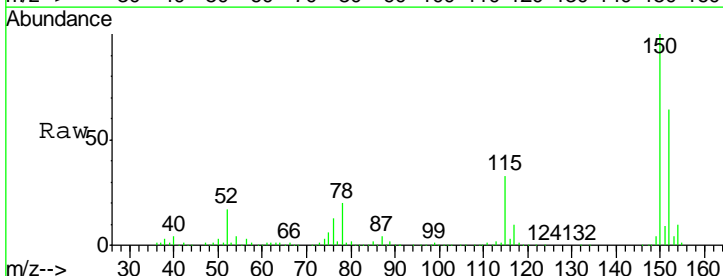
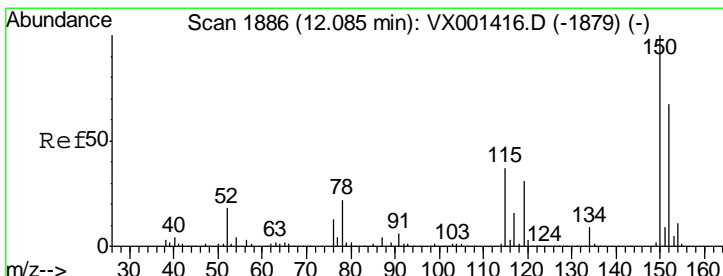
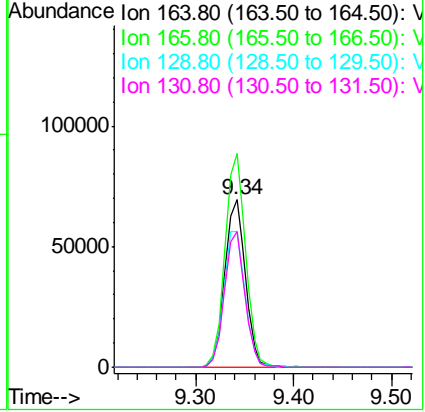




#64  
 Tetrachloroethene  
 Concen: 24.45 ug/l  
 RT: 9.34 min Scan# 1436  
 Delta R.T. 0.00 min  
 Lab File: VX001669.D  
 Acq: 12 May 2018 16:16

**Instrument :**  
 MSVOA\_X  
**ClientSampled :**  
 M-19-180501DL

Tgt Ion	Resp	Lower	Upper
164	100		
166	127.7	103.5	155.3
129	81.3	66.7	100.1
131	80.9	64.9	97.3



#72  
 1,4-Dichlorobenzene-d4  
 Concen: 50.00 ug/l  
 RT: 12.09 min Scan# 1886  
 Delta R.T. 0.00 min  
 Lab File: VX001669.D  
 Acq: 12 May 2018 16:16

Tgt Ion	Resp	Lower	Upper
152	100		
115	51.6	37.7	113.1
150	156.0	0.0	349.4

