

Data Path : W:\HPCHEM1\MSVOA X\DATA\VX051218\
 Data File : VX001670.D
 Acq On : 12 May 2018 16:43
 Operator : JC/MD
 Sample : J2741-06DL 5X
 Misc : 5.0mL/MSVOA X/WATER
 ALS Vial : 13 Sample Multiplier: 1

Instrument :
 MSVOA_X
 ClientSampleId :
 DUP-0453-180501DL

Quant Time: May 14 07:14:46 2018
 Quant Method : W:\HPCHEM1\MSVOA_X\METHOD\82X050518W.M
 Quant Title : SW846 8260
 QLast Update : Sun May 06 07:59:25 2018
 Response via : Initial Calibration

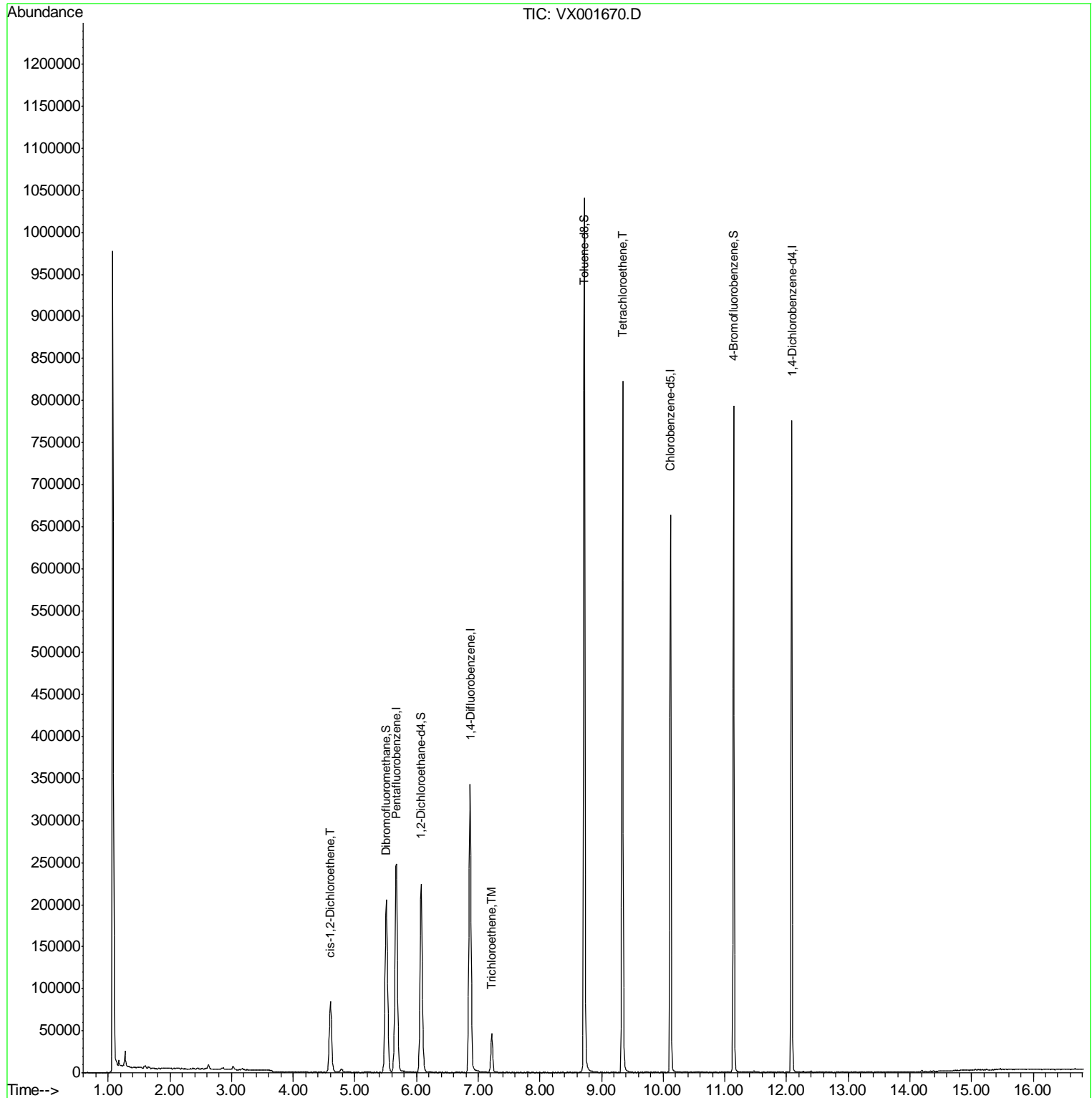
Internal Standards	R.T.	QIon	Response	Conc	Units	Dev(Min)
1) Pentafluorobenzene	5.67	168	263652	50.00	ug/l	0.00
34) 1,4-Difluorobenzene	6.87	114	357018	50.00	ug/l	0.00
63) Chlorobenzene-d5	10.12	117	316155	50.00	ug/l	0.00
72) 1,4-Dichlorobenzene-d4	12.09	152	172314	50.00	ug/l	0.00
System Monitoring Compounds						
33) 1,2-Dichloroethane-d4	6.07	65	212656	56.12	ug/l	0.00
Spiked Amount	50.000		Recovery	=	112.24%	
35) Dibromofluoromethane	5.51	113	168809	53.16	ug/l	0.00
Spiked Amount	50.000		Recovery	=	106.32%	
50) Toluene-d8	8.72	98	601887	51.92	ug/l	0.00
Spiked Amount	50.000		Recovery	=	103.84%	
62) 4-Bromofluorobenzene	11.14	95	196783	44.22	ug/l	0.00
Spiked Amount	50.000		Recovery	=	88.44%	
Target Compounds						
27) cis-1,2-Dichloroethene	4.60	96	53176	15.34	ug/l	88
44) Trichloroethene	7.22	130	18924	4.67	ug/l	92
64) Tetrachloroethene	9.34	164	179855	40.81	ug/l	99

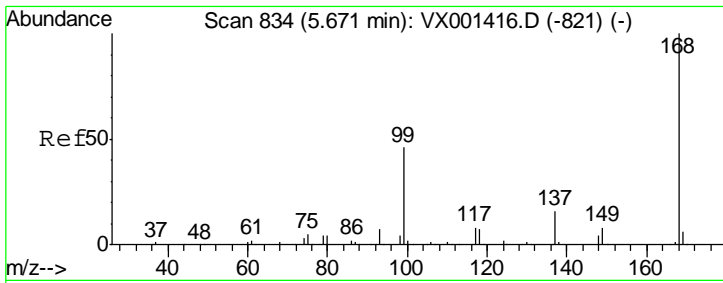
(#) = qualifier out of range (m) = manual integration (+) = signals summed

Data Path : W:\HPCHEM1\MSVOA X\DATA\VX051218\
Data File : VX001670.D
Acq On : 12 May 2018 16:43
Operator : JC/MD
Sample : J2741-06DL 5X
Misc : 5.0mL/MSVOA X/WATER
ALS Vial : 13 Sample Multiplier: 1

Instrument :
MSVOA_X
ClientSampled :
DUP-0453-180501DL

Quant Time: May 14 07:14:46 2018
Quant Method : W:\HPCHEM1\MSVOA_X\METHOD\82X050518W.M
Quant Title : SW846 8260
QLast Update : Sun May 06 07:59:25 2018
Response via : Initial Calibration

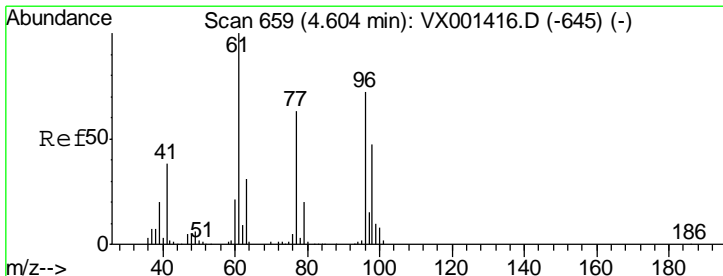
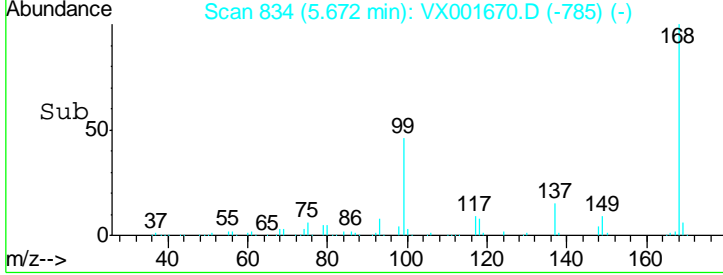
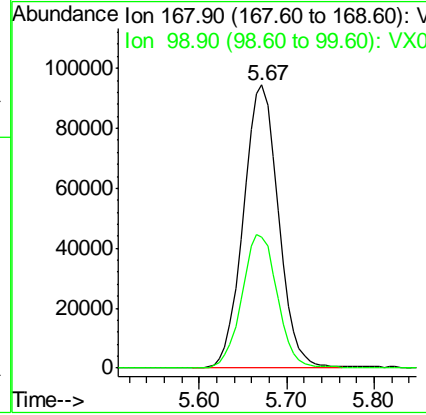
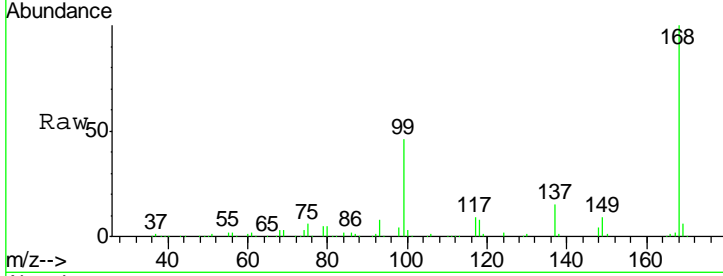




#1
 Pentafluorobenzene
 Concen: 50.00 ug/l
 RT: 5.67 min Scan# 834
 Delta R.T. 0.00 min
 Lab File: VX001670.D
 Acq: 12 May 2018 16:43

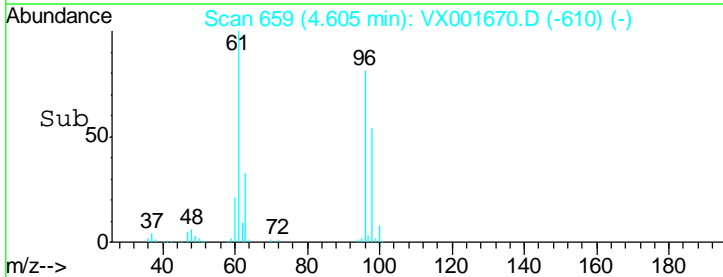
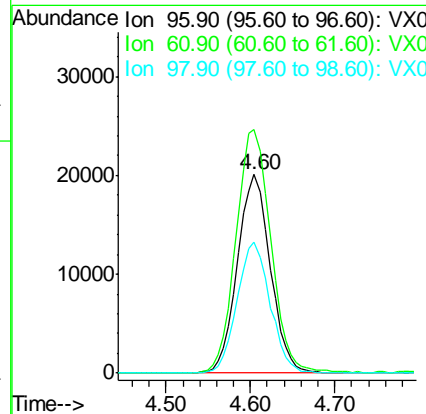
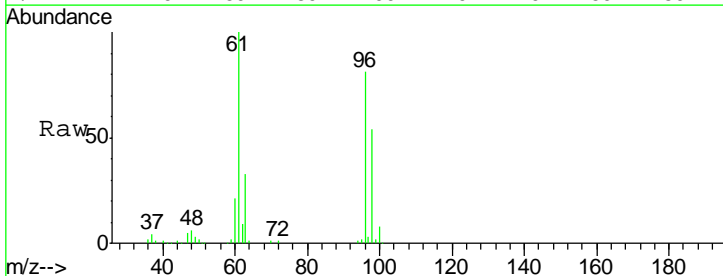
Instrument : MSVOA_X
 ClientSampled : DUP-0453-180501DL

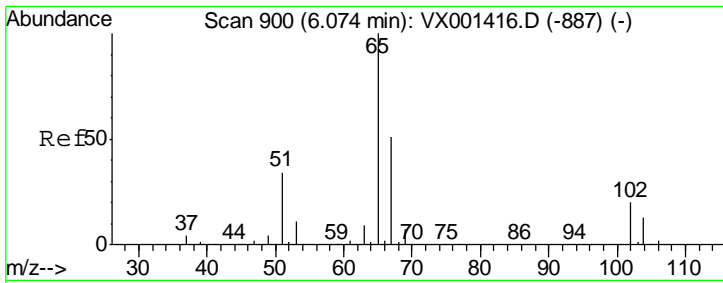
Tgt Ion	Resp	Lower	Upper
168	100		
99	46.3	36.6	54.8



#27
 cis-1,2-Dichloroethene
 Concen: 15.34 ug/l
 RT: 4.60 min Scan# 659
 Delta R.T. 0.00 min
 Lab File: VX001670.D
 Acq: 12 May 2018 16:43

Tgt Ion	Resp	Lower	Upper
96	100		
61	129.8	0.0	301.6
98	65.9	0.0	131.6

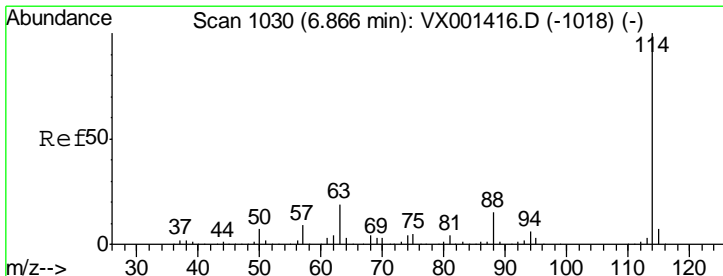
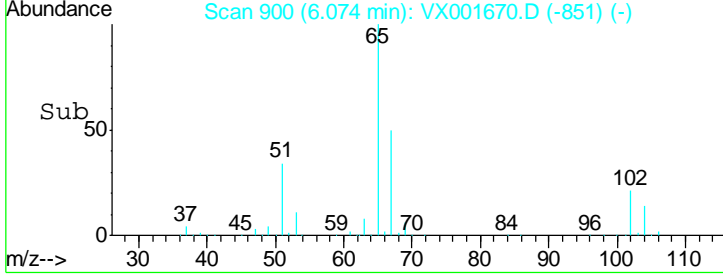
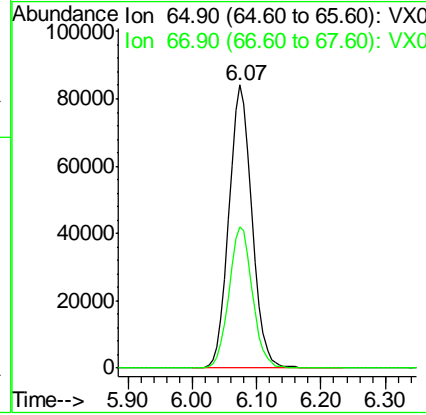
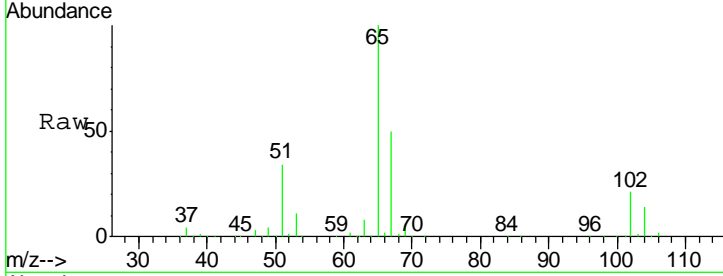




#33
 1,2-Dichloroethane-d4
 Concen: 56.12 ug/l
 RT: 6.07 min Scan# 900
 Delta R.T. 0.00 min
 Lab File: VX001670.D
 Acq: 12 May 2018 16:43

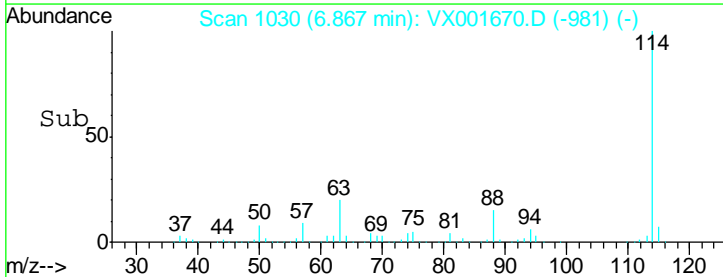
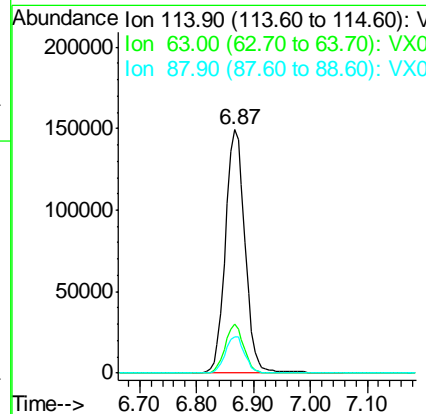
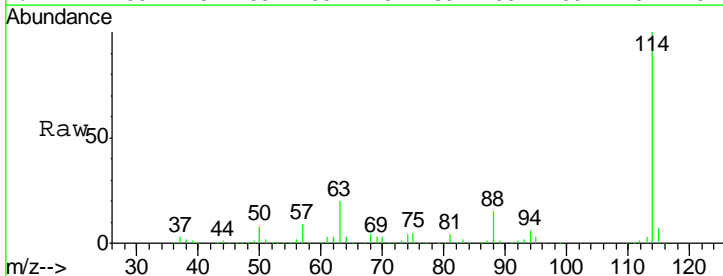
Instrument :
 MSVOA_X
ClientSampleID :
 DUP-0453-180501DL

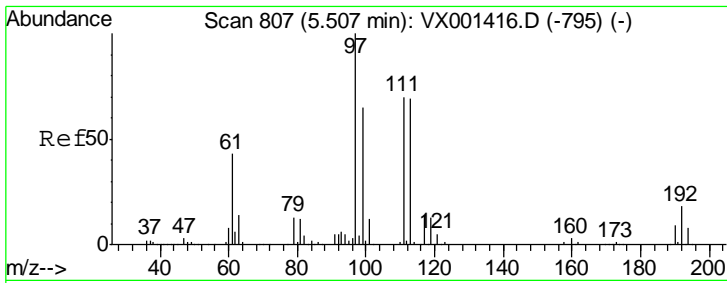
Tgt Ion: 65 Resp: 212656
 Ion Ratio Lower Upper
 65 100
 67 50.6 0.0 101.8



#34
 1,4-Difluorobenzene
 Concen: 50.00 ug/l
 RT: 6.87 min Scan# 1030
 Delta R.T. 0.00 min
 Lab File: VX001670.D
 Acq: 12 May 2018 16:43

Tgt Ion: 114 Resp: 357018
 Ion Ratio Lower Upper
 114 100
 63 20.3 0.0 38.6
 88 15.1 0.0 30.8

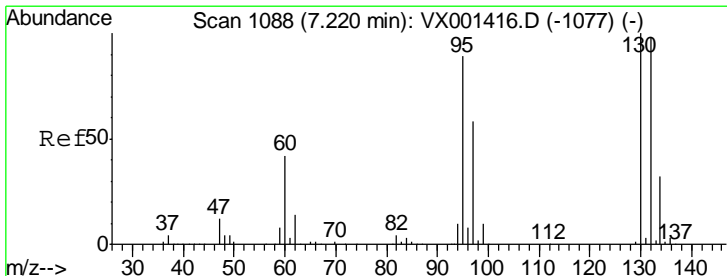
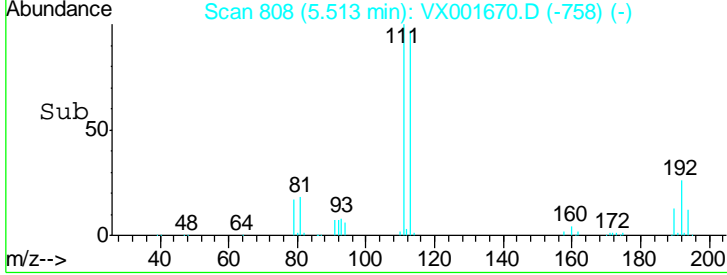
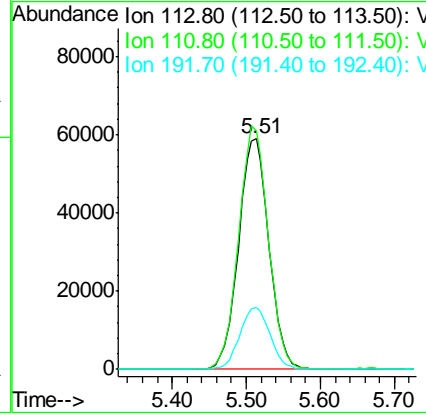
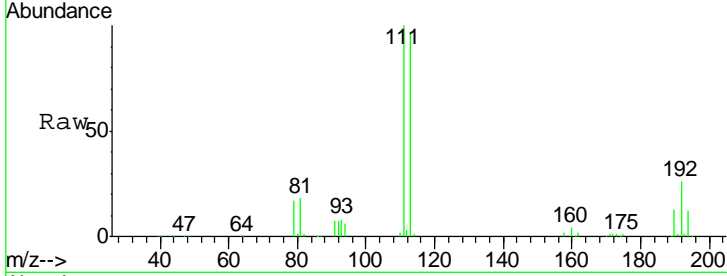




#35
 Dibromofluoromethane
 Concen: 53.16 ug/l
 RT: 5.51 min Scan# 808
 Delta R.T. 0.01 min
 Lab File: VX001670.D
 Acq: 12 May 2018 16:43

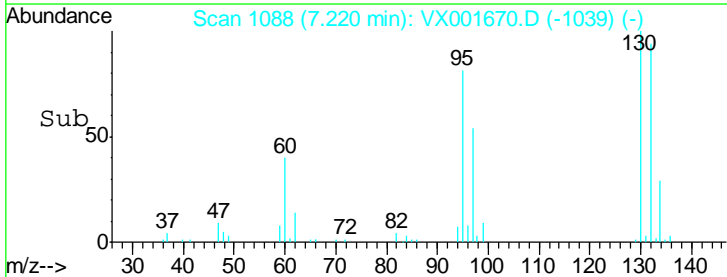
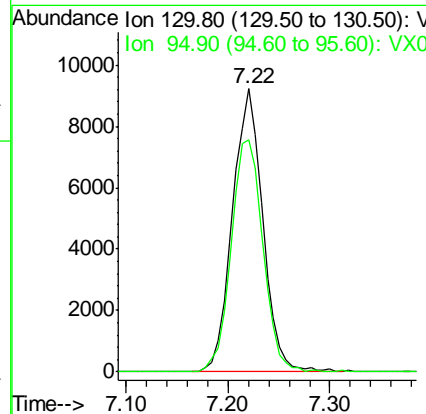
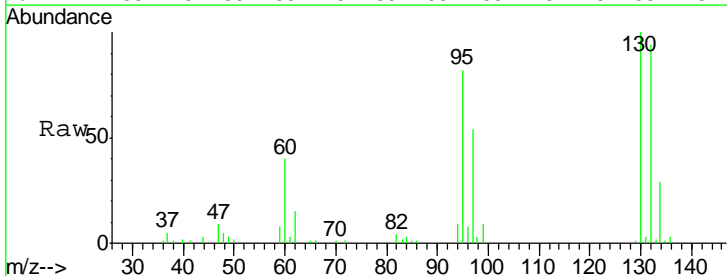
Instrument :
 MSVOA_X
 ClientSampled :
 DUP-0453-180501DL

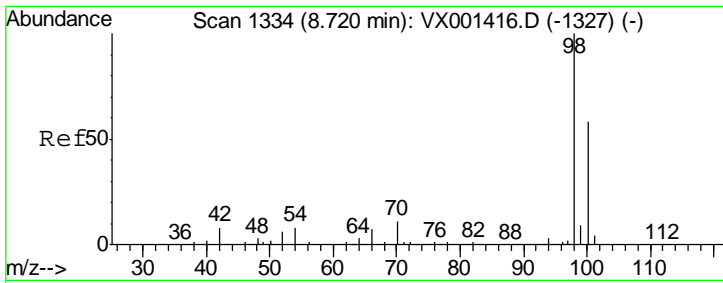
Tgt Ion	Resp	Lower	Upper
113	168809		
113	100		
111	102.9	82.2	123.2
192	26.8	21.4	32.0



#44
 Trichloroethene
 Concen: 4.67 ug/l
 RT: 7.22 min Scan# 1088
 Delta R.T. 0.00 min
 Lab File: VX001670.D
 Acq: 12 May 2018 16:43

Tgt Ion	Resp	Lower	Upper
130	18924		
130	100		
95	81.9	0.0	178.4

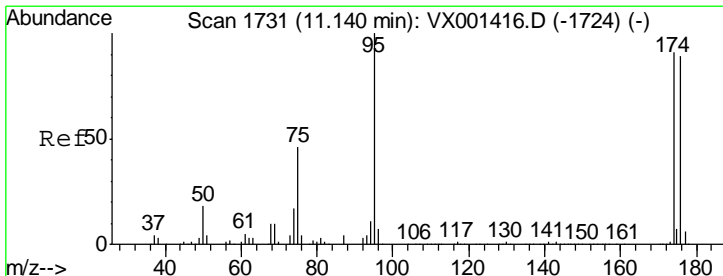
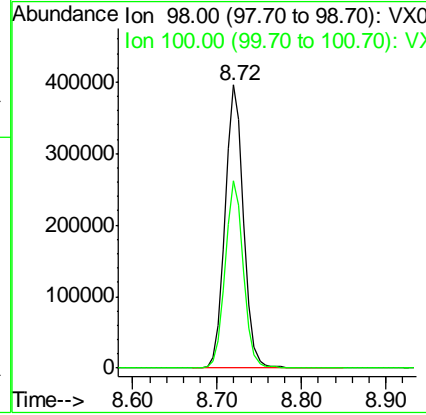
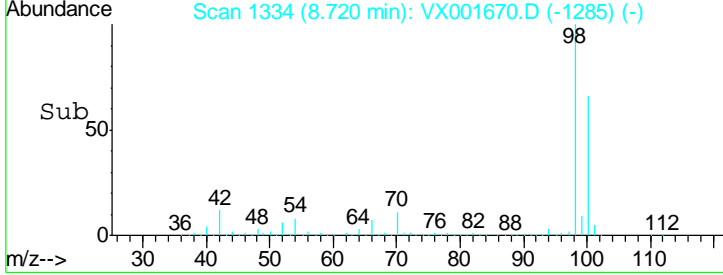
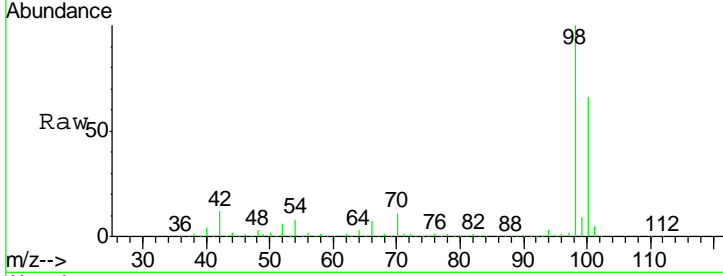




#50
 Toluene-d8
 Concen: 51.92 ug/l
 RT: 8.72 min Scan# 1334
 Delta R.T. 0.00 min
 Lab File: VX001670.D
 Acq: 12 May 2018 16:43

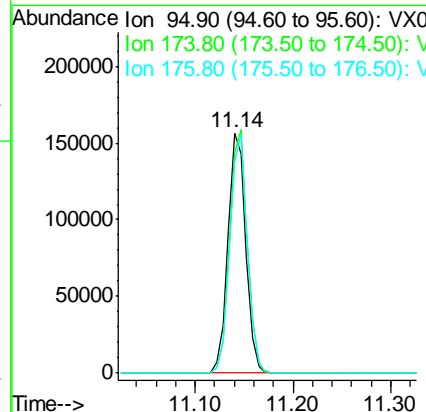
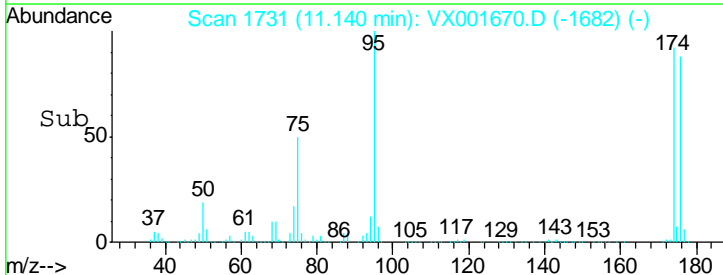
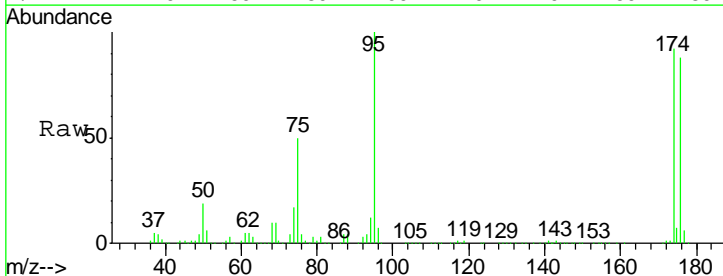
Instrument :
 MSVOA_X
ClientSampled :
 DUP-0453-180501DL

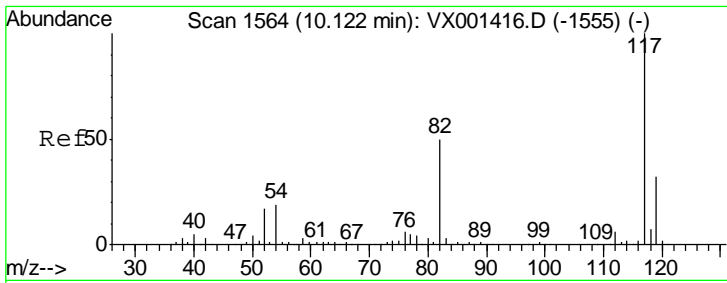
Tgt Ion	Resp	Lower	Upper
98	601887		
100	100		
100	65.4	54.0	81.0



#62
 4-Bromofluorobenzene
 Concen: 44.22 ug/l
 RT: 11.14 min Scan# 1731
 Delta R.T. 0.00 min
 Lab File: VX001670.D
 Acq: 12 May 2018 16:43

Tgt Ion	Resp	Lower	Upper
95	196783		
95	100		
174	101.0	0.0	202.0
176	97.6	0.0	197.4

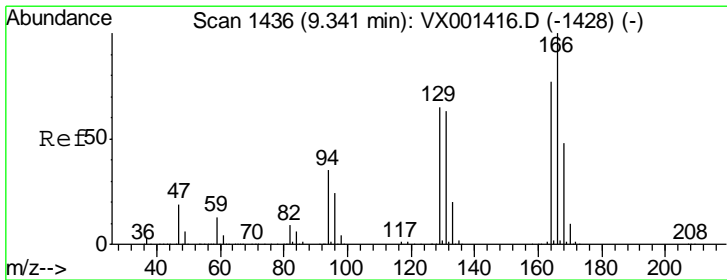
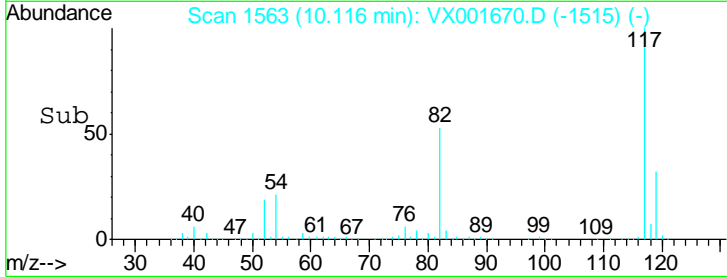
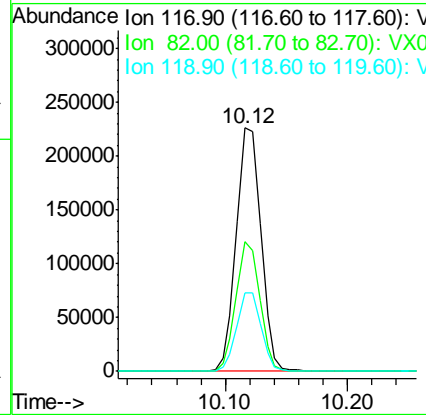
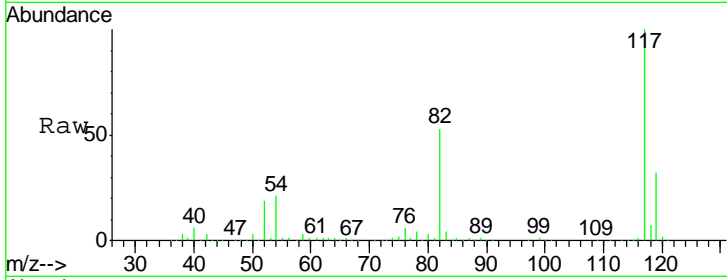




#63
 Chlorobenzene-d5
 Concen: 50.00 ug/l
 RT: 10.12 min Scan# 1563
 Delta R.T. -0.01 min
 Lab File: VX001670.D
 Acq: 12 May 2018 16:43

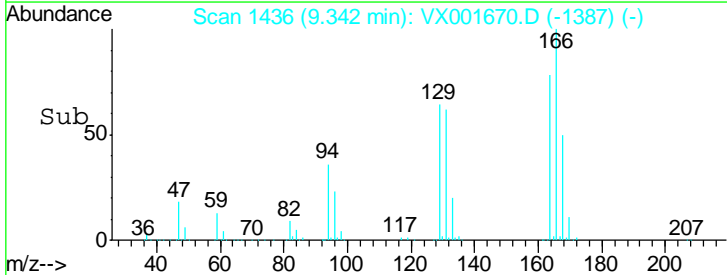
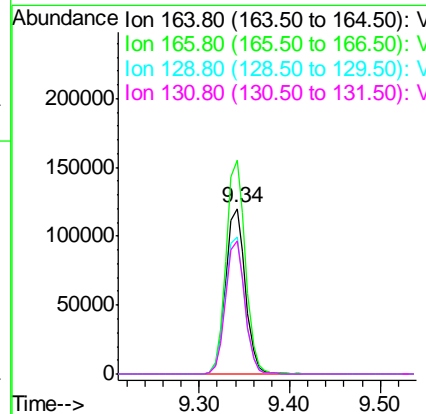
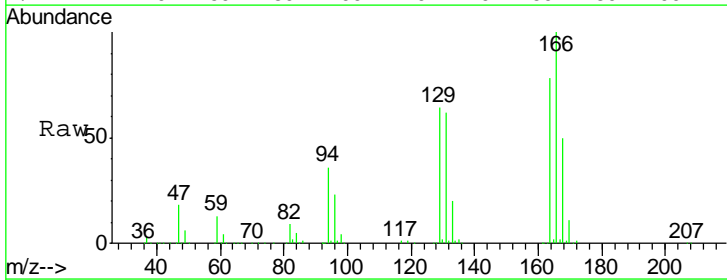
Instrument :
 MSVOA_X
 ClientSampleID :
 DUP-0453-180501DL

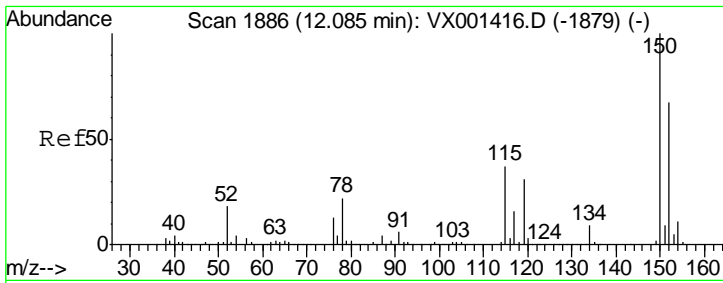
Tgt Ion	Resp	Lower	Upper
117	100		
82	53.4	40.0	60.0
119	32.4	25.8	38.8



#64
 Tetrachloroethene
 Concen: 40.81 ug/l
 RT: 9.34 min Scan# 1436
 Delta R.T. 0.00 min
 Lab File: VX001670.D
 Acq: 12 May 2018 16:43

Tgt Ion	Resp	Lower	Upper
164	100		
166	129.0	103.5	155.3
129	83.1	66.7	100.1
131	80.2	64.9	97.3





#72
 1,4-Dichlorobenzene-d4
 Concen: 50.00 ug/l
 RT: 12.09 min Scan# 1886
 Delta R.T. 0.00 min
 Lab File: VX001670.D
 Acq: 12 May 2018 16:43

Instrument :
 MSVOA_X
ClientSampleId :
 DUP-0453-180501DL

Tot Ion	152	Resp	172314
Ion Ratio	Lower	Upper	
152	100		
115	51.9	37.7	113.1
150	153.5	0.0	349.4

