

Data Path : W:\HPCHEM1\MSVOA X\DATA\VX051218\
 Data File : VX001662.D
 Acq On : 12 May 2018 13:09
 Operator : JC/MD
 Sample : J2741-18
 Misc : 5.0mL/MSVOA X/WATER
 ALS Vial : 5 Sample Multiplier: 1

Instrument :
 MSVOA_X
 ClientSampleId :
 SS037MW110-180502

Integration Parameters: RTEINT.P
 Integrator: RTE
 Smoothing : ON Filtering: 5
 Sampling : 1 Min Area: 3 % of largest Peak
 Start Thrs: 0.2 Max Peaks: 100
 Stop Thrs : 0 Peak Location: TOP

If leading or trailing edge < 100 prefer < Baseline drop else tangent >
 Peak separation: 5

Method : W:\HPCHEM1\MSVOA_X\METHOD\82X050518W.M
 Title : SW846 8260

Signal : TIC

peak #	R.T. min	first scan	max scan	last scan	PK TY	peak height	corr. area	corr. % max.	% of total
1	1.075	76	80	93	rBV	1488979	1778692	100.00%	19.282%
2	1.270	108	112	118	rVB	13765	18216	1.02%	0.197%
3	4.605	648	659	672	rBV	41160	114809	6.45%	1.245%
4	5.513	795	808	823	rBV2	206529	594870	33.44%	6.449%
5	5.671	823	834	850	rVV	254427	715852	40.25%	7.760%
6	6.074	889	900	918	rBV	225600	587837	33.05%	6.372%
7	6.866	1019	1030	1047	rBV	349458	828705	46.59%	8.984%
8	7.220	1080	1088	1097	rBV2	18246	39936	2.25%	0.433%
9	8.720	1326	1334	1357	rBV	1032998	1617823	90.96%	17.538%
10	9.342	1429	1436	1449	rBV	147269	219558	12.34%	2.380%
11	10.116	1557	1563	1574	rBV	643214	880625	49.51%	9.546%
12	11.146	1726	1732	1742	rBV	754583	976563	54.90%	10.586%
13	12.085	1880	1886	1897	rVB	699521	851171	47.85%	9.227%

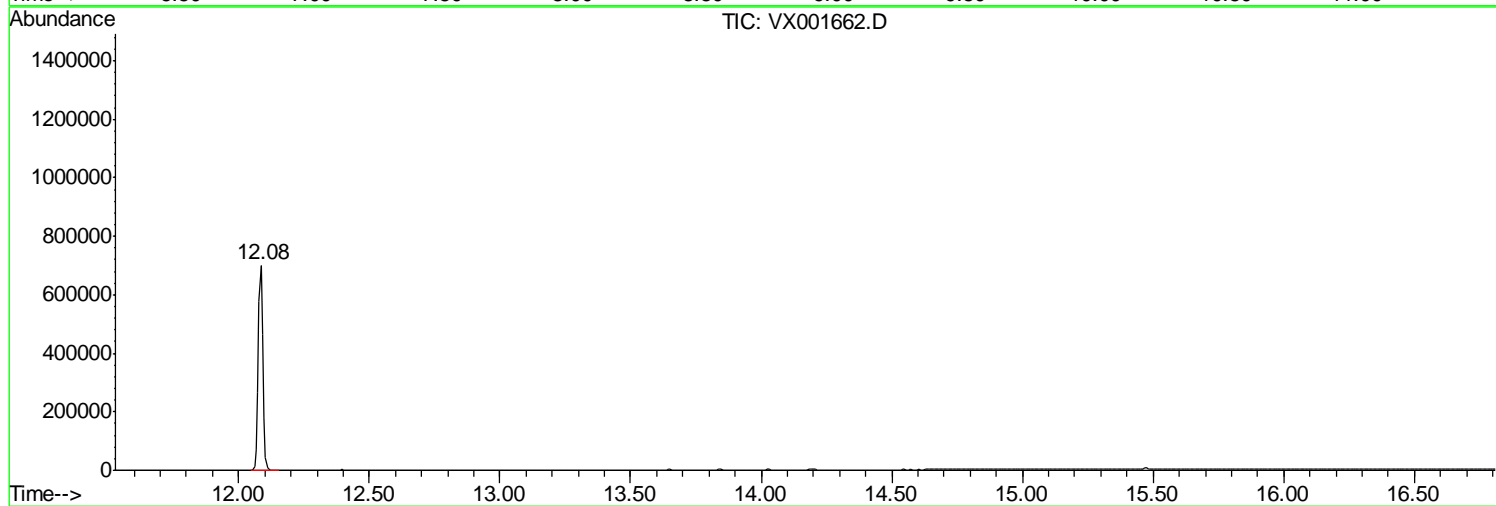
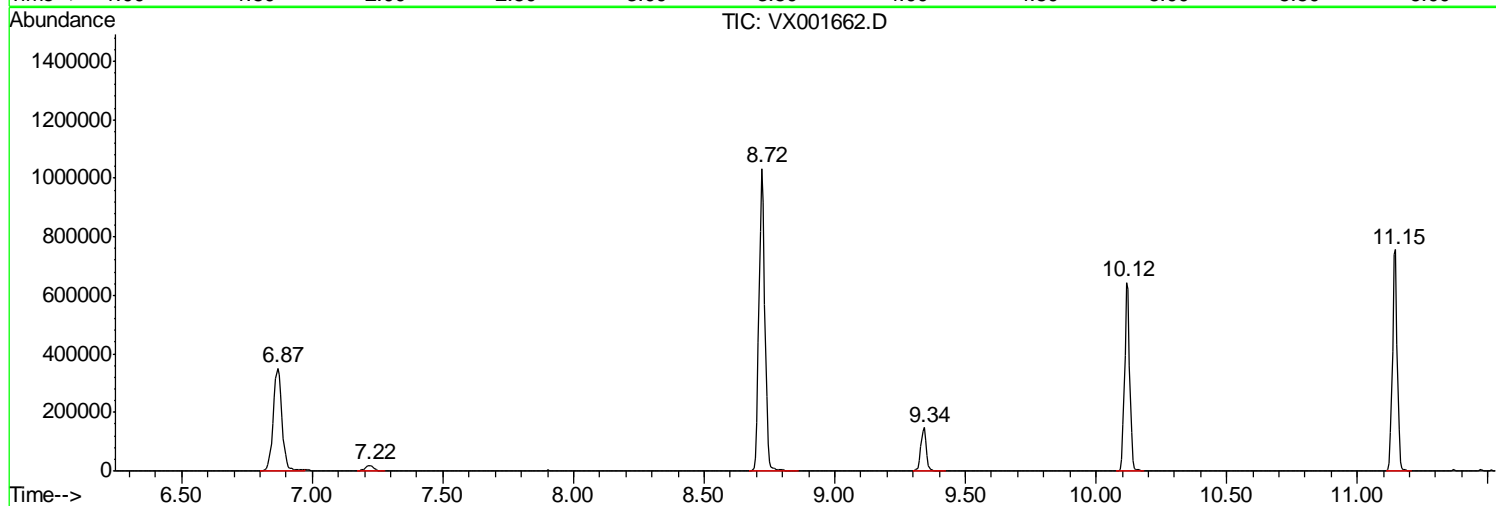
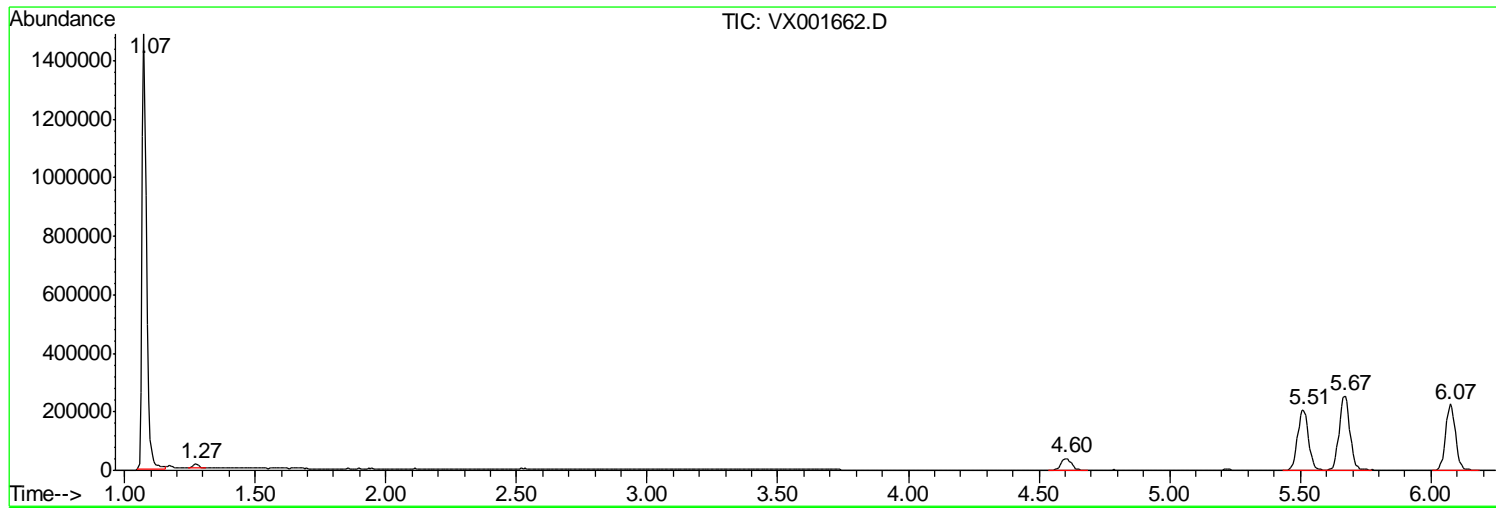
Sum of corrected areas: 9224657

Data Path : W:\HPCHEM1\MSVOA X\DATA\VX051218\
Data File : VX001662.D
Acq On : 12 May 2018 13:09
Operator : JC/MD
Sample : J2741-18
Misc : 5.0mL/MSVOA X/WATER
ALS Vial : 5 Sample Multiplier: 1

Instrument :
MSVOA_X
ClientSampleId :
SS037MW110-180502

Quant Method : W:\HPCHEM1\MSVOA_X\METHOD\82X050518W.M
Quant Title : SW846 8260

TIC Library : C:\DATABASE\NIST11.L
TIC Integration Parameters: LSCINT.P



Data Path : W:\HPCHEM1\MSVOA_X\DATA\VX051218\
Data File : VX001662.D
Acq On : 12 May 2018 13:09
Operator : JC/MD
Sample : J2741-18
Misc : 5.0mL/MSVOA_X/WATER
ALS Vial : 5 Sample Multiplier: 1

Instrument :
MSVOA_X
ClientSampleId :
SS037MW110-180502

Quant Method : W:\HPCHEM1\MSVOA_X\METHOD\82X050518W.M
Quant Title : SW846 8260

TIC Library : C:\DATABASE\NIST11.L
TIC Integration Parameters: LSCINT.P

No Library Search Compounds Detected

Data Path : W:\HPCHEM1\MSVOA_X\DATA\VX051218\
Data File : VX001662.D
Acq On : 12 May 2018 13:09
Operator : JC/MD
Sample : J2741-18
Misc : 5.0mL/MSVOA_X/WATER
ALS Vial : 5 Sample Multiplier: 1

Instrument :
MSVOA_X
ClientSampleId :
SS037MW110-180502

Quant Method : W:\HPCHEM1\MSVOA_X\METHOD\82X050518W.M
Quant Title : SW846 8260

TIC Library : C:\DATABASE\NIST11.L
TIC Integration Parameters: LSCINT.P

TIC Top Hit name	RT	EstConc	Units	Response	--Internal Standard--			
					#	RT	Resp	Conc
