

Data File : VX001749.D
 Acq On : 15 May 2018 16:55
 Operator : JC/MD
 Sample : J2737-01
 Misc : 5.0mL/MSVOA_X/WATER
 ALS Vial : 16 Sample Multiplier: 1

Instrument :
 MSVOA_X
 ClientSampleId :
 KY062MW145-180503

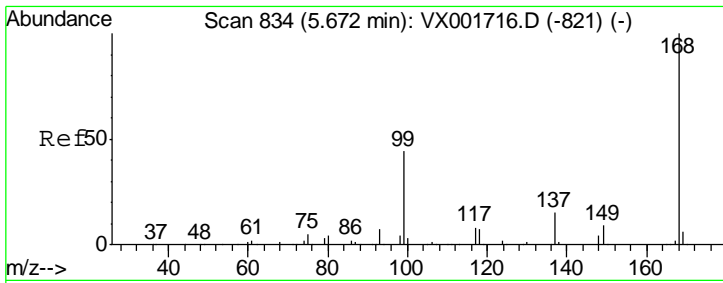
Quant Time: May 16 04:13:18 2018
 Quant Method : W:\HPCHEM1\MSVOA_X\METHOD\82X051518W.M
 Quant Title : SW846 8260
 QLast Update : Tue May 15 01:36:22 2018
 Response via : Initial Calibration

Internal Standards	R.T.	QIon	Response	Conc	Units	Dev(Min)
1) Pentafluorobenzene	5.67	168	238348	50.00	ug/l	0.00
34) 1,4-Difluorobenzene	6.87	114	320166	50.00	ug/l	0.00
63) Chlorobenzene-d5	10.12	117	261288	50.00	ug/l	0.00
72) 1,4-Dichlorobenzene-d4	12.08	152	129290	50.00	ug/l	0.00

System Monitoring Compounds	R.T.	QIon	Response	Conc	Units	Dev(Min)
33) 1,2-Dichloroethane-d4	6.08	65	180779	56.59	ug/l	0.00
Spiked Amount				50.000		
Recovery				=	113.18%	
35) Dibromofluoromethane	5.51	113	146239	54.12	ug/l	0.00
Spiked Amount				50.000		
Recovery				=	108.24%	
50) Toluene-d8	8.72	98	488615	50.49	ug/l	0.00
Spiked Amount				50.000		
Recovery				=	100.98%	
62) 4-Bromofluorobenzene	11.15	95	148242	42.55	ug/l	0.00
Spiked Amount				50.000		
Recovery				=	85.10%	

Target Compounds	R.T.	QIon	Response	Conc	Units	Qvalue
3) Chloromethane	1.32	50	1644	0.64	ug/l	91
5) Bromomethane	1.65	94	1368	Below Cal	#	80
6) Chloroethane	1.73	64	361	0.21	ug/l	90
9) 1,1,2-Trichlorotrifluoroet	2.39	101	622	0.25	ug/l	94
10) Methyl Iodide	2.51	142	983	0.44	ug/l	89
11) Tert butyl alcohol	3.02	59	1043	1.84	ug/l #	72
16) Acetone	2.45	43	1746	1.39	ug/l #	88
27) cis-1,2-Dichloroethene	4.60	96	6477	2.19	ug/l	86
31) Cyclohexane	5.67	56	3897	0.97	ug/l #	24
36) 1,1-Dichloropropene	5.67	75	14188	3.85	ug/l #	49
38) Carbon Tetrachloride	5.67	117	20264	5.25	ug/l #	16
44) Trichloroethene	7.22	130	2969	0.88	ug/l	94
60) Dibromochloromethane	9.34	129	18223	6.67	ug/l #	11
64) Tetrachloroethene	9.34	164	23182	6.82	ug/l	96
76) 1,2,3-Trichloropropane	11.14	75	70734	28.77	ug/l #	39
81) trans-1,4-Dichloro-2-buten	11.14	75	70734	83.38	ug/l #	10

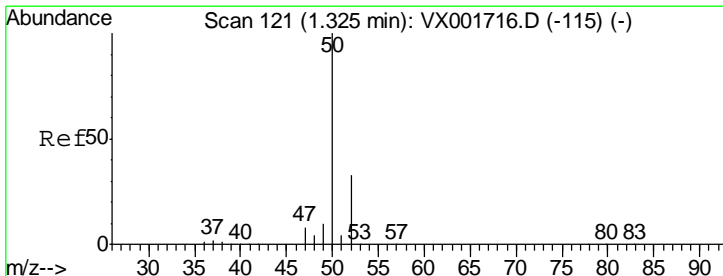
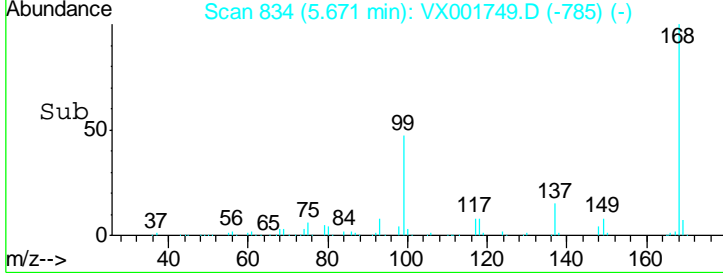
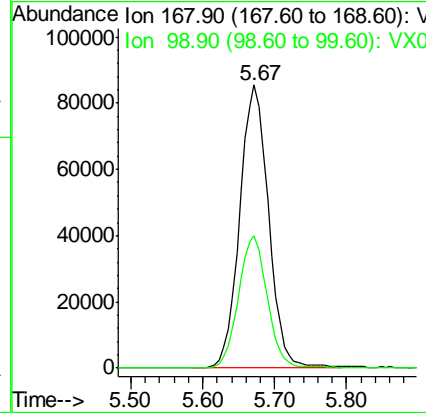
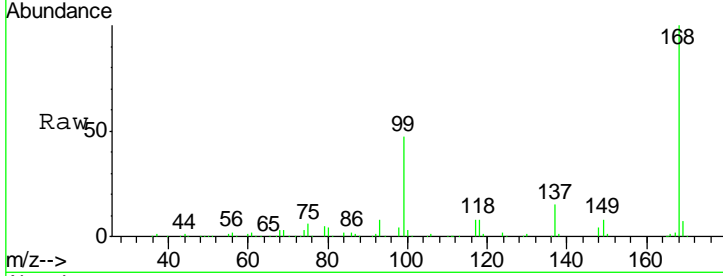
(#) = qualifier out of range (m) = manual integration (+) = signals summed



#1
 Pentafluorobenzene
 Concen: 50.00 ug/l
 RT: 5.67 min Scan# 834
 Delta R.T. -0.00 min
 Lab File: VX001749.D
 Acq: 15 May 2018 16:55

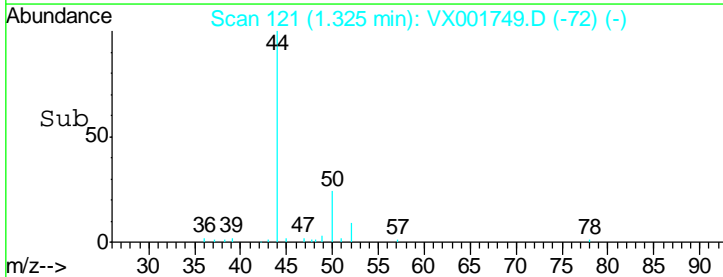
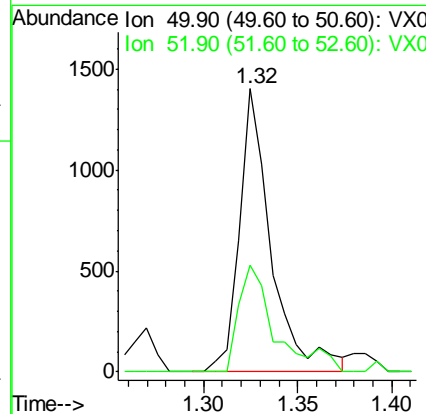
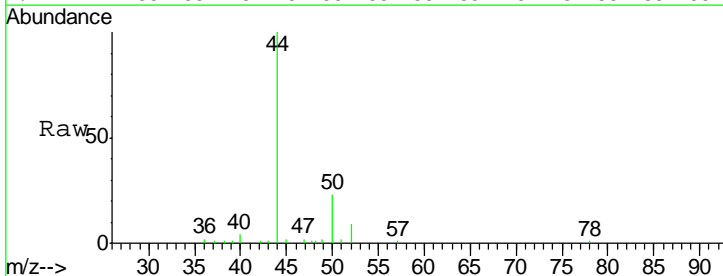
Instrument : MSVOA_X
 ClientSampleID : KY062MW145-180503

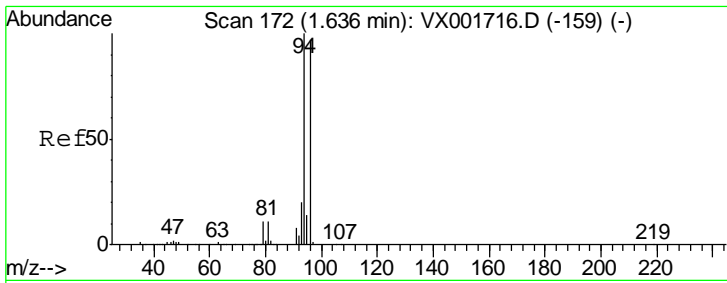
Tgt Ion: 168 Resp: 238348
 Ion Ratio Lower Upper
 168 100
 99 46.9 35.0 52.4



#3
 Chloromethane
 Concen: 0.64 ug/l
 RT: 1.32 min Scan# 121
 Delta R.T. -0.00 min
 Lab File: VX001749.D
 Acq: 15 May 2018 16:55

Tgt Ion: 50 Resp: 1644
 Ion Ratio Lower Upper
 50 100
 52 37.7 26.3 39.5

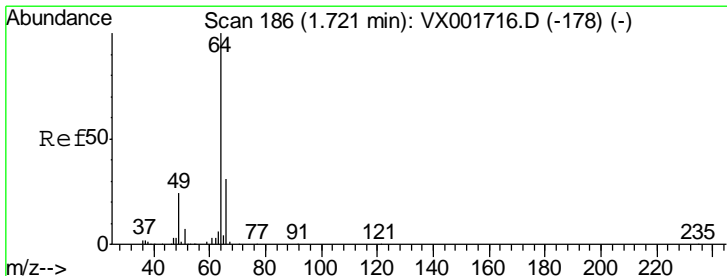
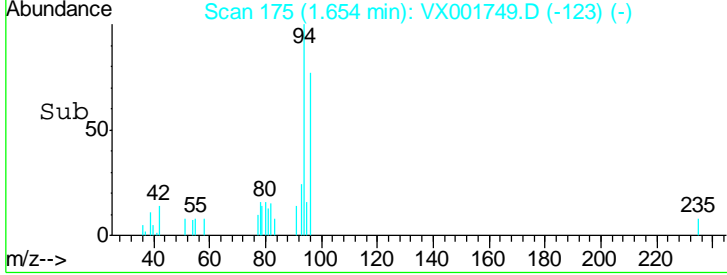
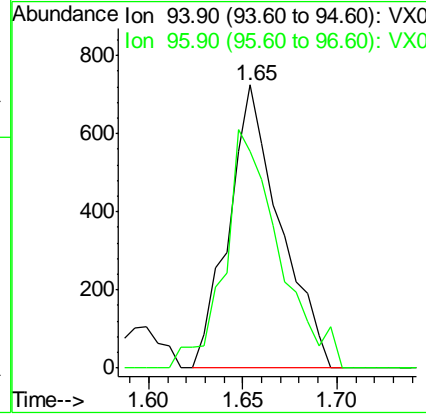
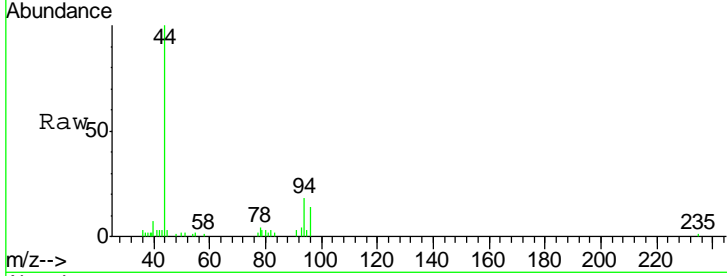




#5
 Bromomethane
 Concen: Below Cal
 RT: 1.65 min Scan# 175
 Delta R.T. 0.02 min
 Lab File: VX001749.D
 Acq: 15 May 2018 16:55

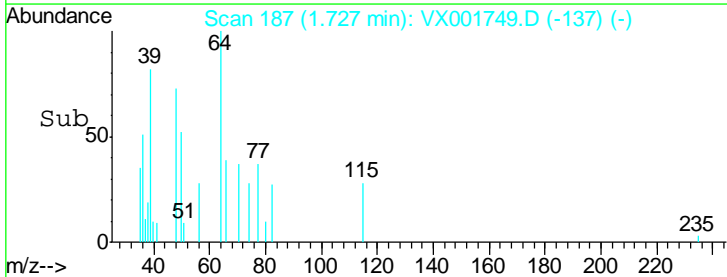
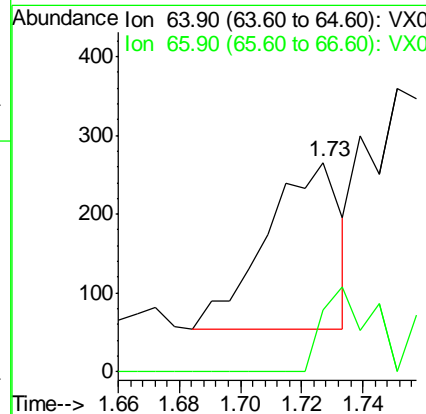
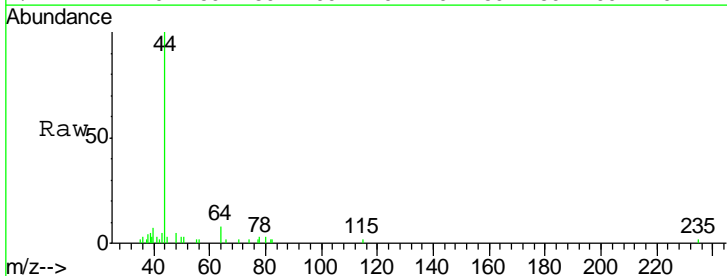
Instrument :
 MSVOA_X
ClientSampled :
 KY062MW145-180503

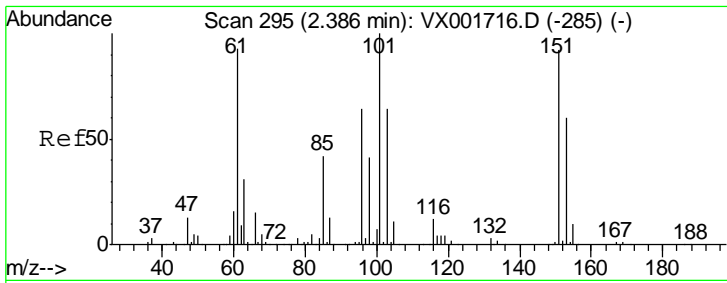
Tgt Ion: 94 Resp: 1368
 Ion Ratio Lower Upper
 94 100
 96 76.7 77.4 116.0#



#6
 Chloroethane
 Concen: 0.21 ug/l
 RT: 1.73 min Scan# 187
 Delta R.T. 0.01 min
 Lab File: VX001749.D
 Acq: 15 May 2018 16:55

Tgt Ion: 64 Resp: 361
 Ion Ratio Lower Upper
 64 100
 66 36.8 25.2 37.8

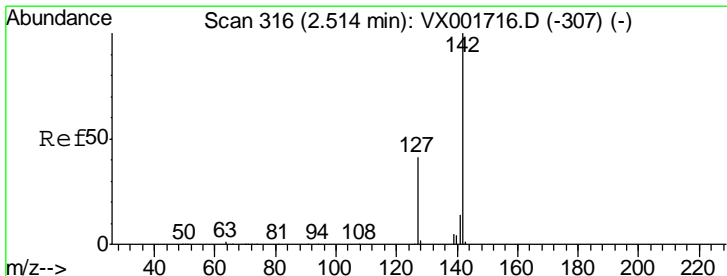
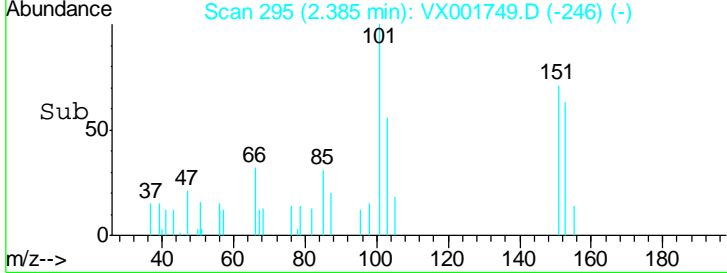
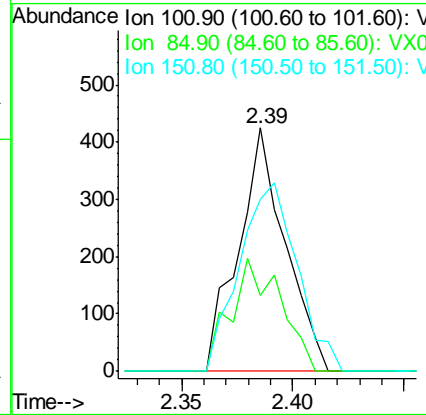
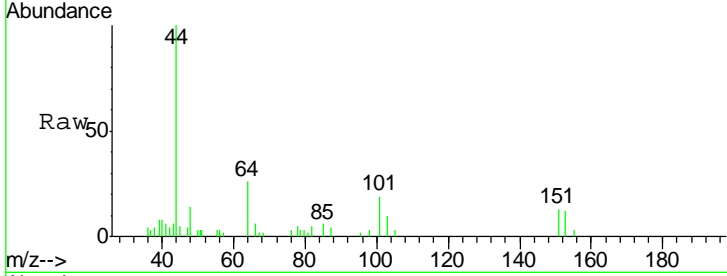




#9
 1,1,2-Trichlorotrifluoroethane
 Concen: 0.25 ug/l
 RT: 2.39 min Scan# 295
 Delta R.T. -0.00 min
 Lab File: VX001749.D
 Acq: 15 May 2018 16:55

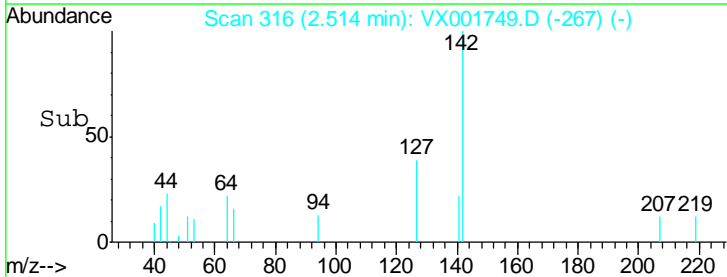
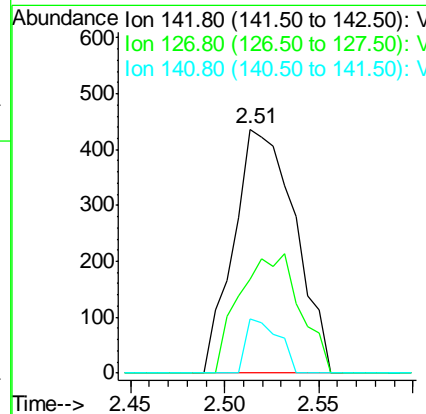
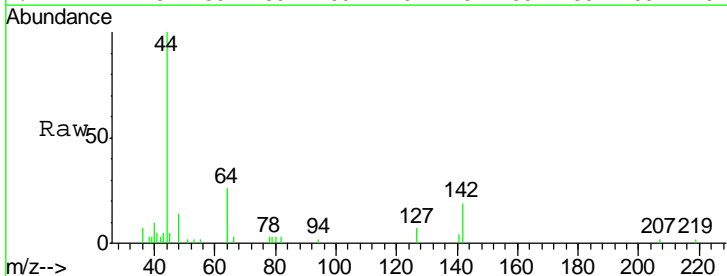
Instrument :
 MSVOA_X
 ClientSampleId :
 KY062MW145-180503

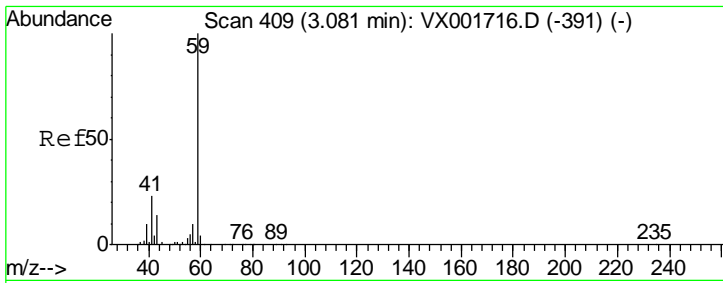
Tgt Ion	Resp	Lower	Upper
101	622		
85	49.4	33.7	50.5
151	95.2	73.0	109.6



#10
 Methyl Iodide
 Concen: 0.44 ug/l
 RT: 2.51 min Scan# 316
 Delta R.T. -0.00 min
 Lab File: VX001749.D
 Acq: 15 May 2018 16:55

Tgt Ion	Resp	Lower	Upper
142	983		
127	48.2	32.5	48.7
141	11.8	11.4	17.0

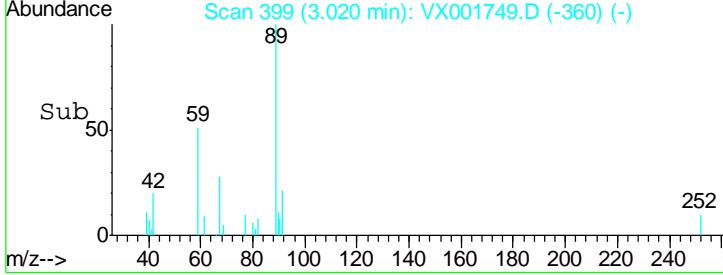
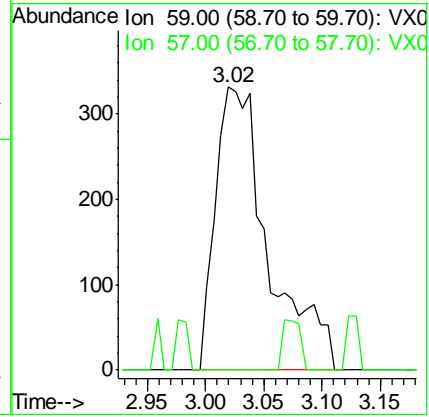
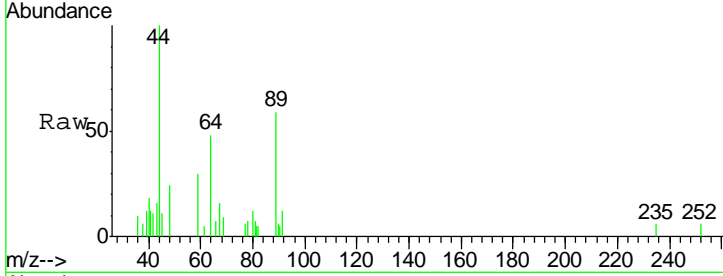




#11
 Tert butyl alcohol
 Concen: 1.84 ug/l
 RT: 3.02 min Scan# 399
 Delta R.T. -0.06 min
 Lab File: VX001749.D
 Acq: 15 May 2018 16:55

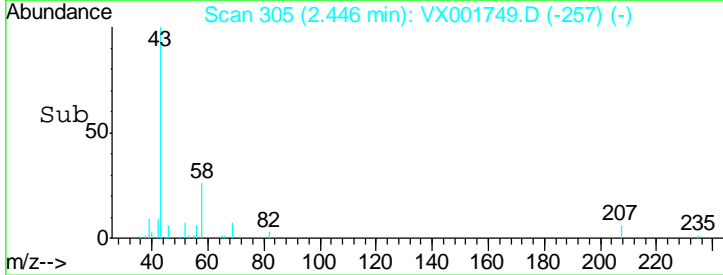
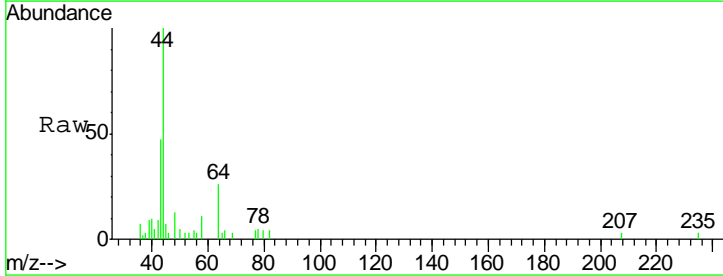
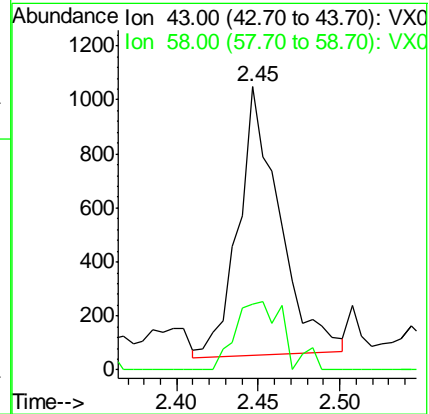
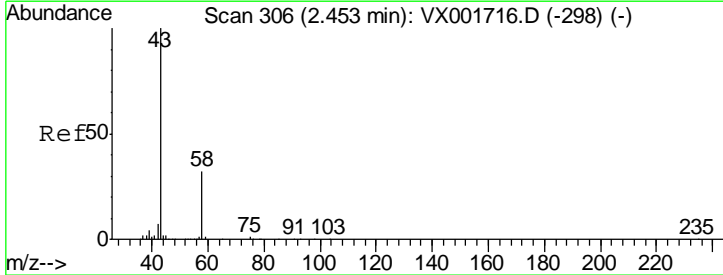
Instrument :
 MSVOA_X
ClientSampled :
 KY062MW145-180503

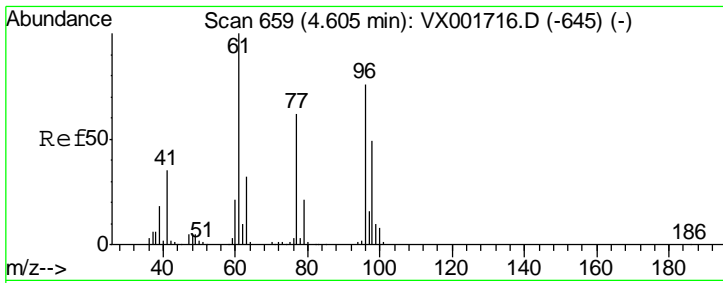
Tgt Ion: 59 Resp: 1043
 Ion Ratio Lower Upper
 59 100
 57 0.0 8.5 12.7#



#16
 Acetone
 Concen: 1.39 ug/l
 RT: 2.45 min Scan# 305
 Delta R.T. -0.01 min
 Lab File: VX001749.D
 Acq: 15 May 2018 16:55

Tgt Ion: 43 Resp: 1746
 Ion Ratio Lower Upper
 43 100
 58 25.1 25.3 37.9#

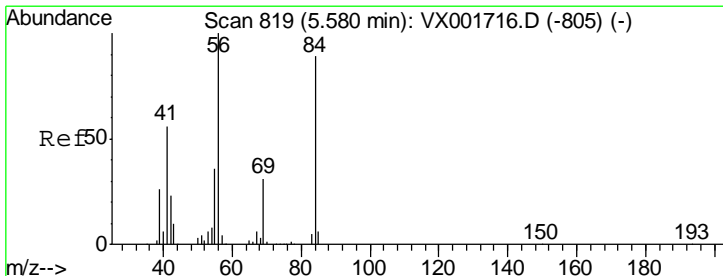
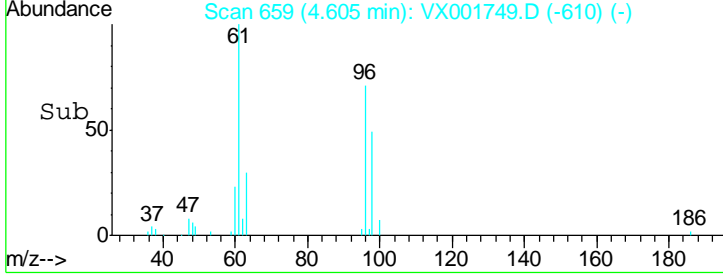
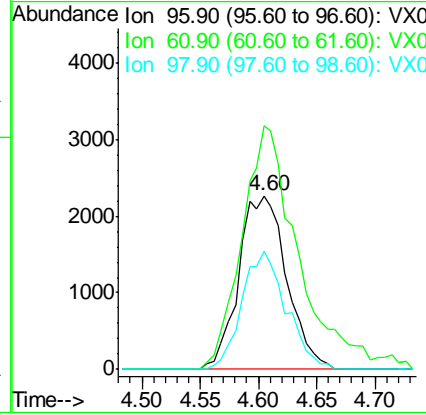
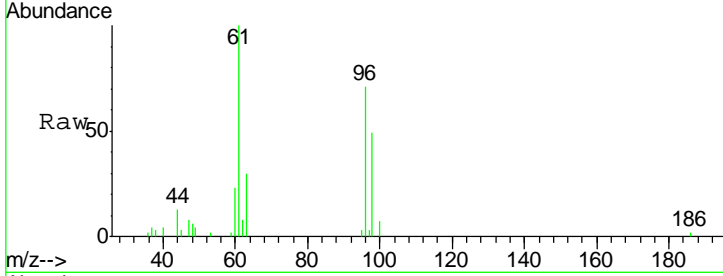




#27
 cis-1,2-Dichloroethene
 Concen: 2.19 ug/l
 RT: 4.60 min Scan# 659
 Delta R.T. -0.00 min
 Lab File: VX001749.D
 Acq: 15 May 2018 16:55

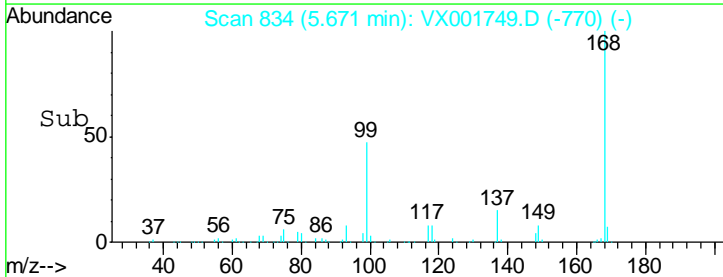
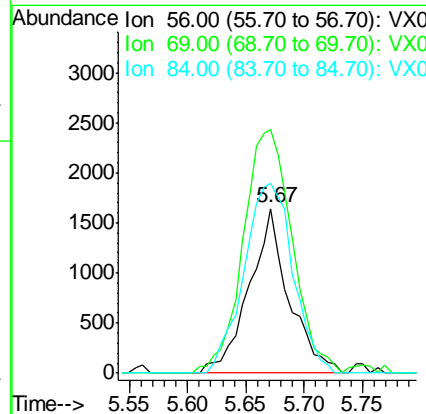
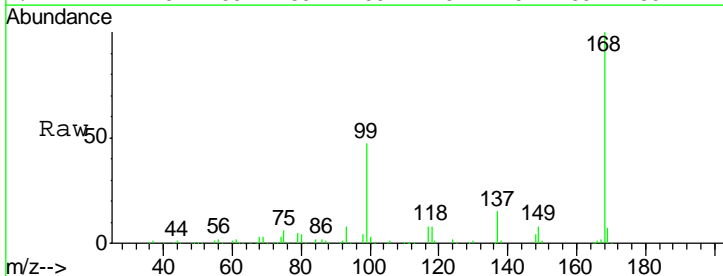
Instrument :
 MSVOA_X
ClientSampled :
 KY062MW145-180503

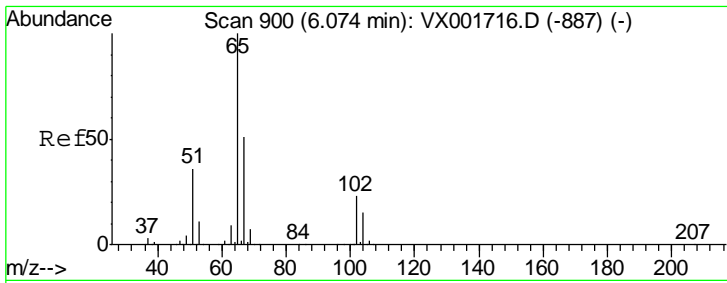
Tgt Ion	Resp	Lower	Upper
96	6477		
Ion Ratio			
96	100		
61	164.5	0.0	280.4
98	62.7	0.0	128.4



#31
 Cyclohexane
 Concen: 0.97 ug/l
 RT: 5.67 min Scan# 834
 Delta R.T. 0.09 min
 Lab File: VX001749.D
 Acq: 15 May 2018 16:55

Tgt Ion	Resp	Lower	Upper
56	3897		
Ion Ratio			
56	100		
69	148.0	25.0	37.6#
84	115.5	71.0	106.4#

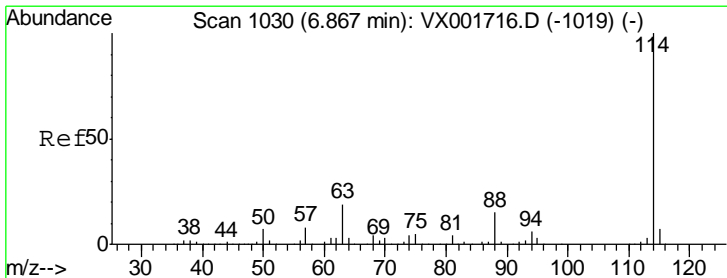
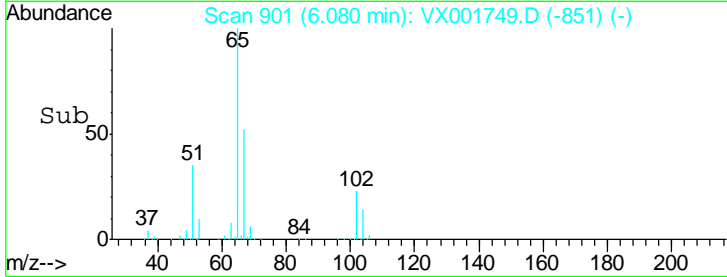
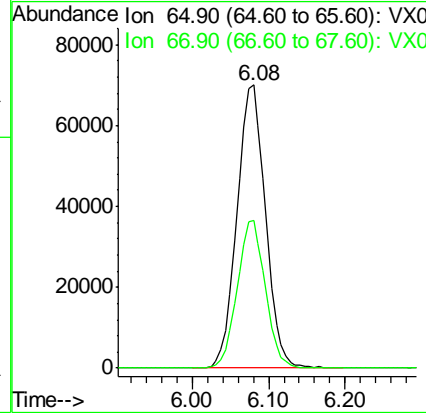
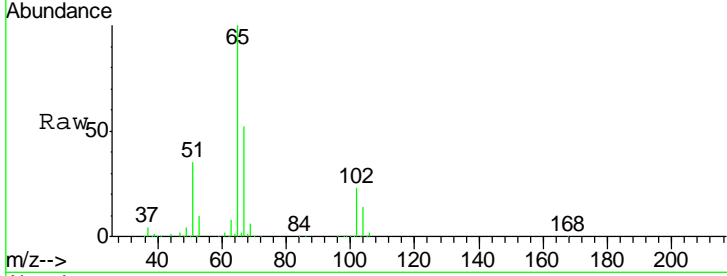




#33
 1,2-Dichloroethane-d4
 Concen: 56.59 ug/l
 RT: 6.08 min Scan# 901
 Delta R.T. 0.01 min
 Lab File: VX001749.D
 Acq: 15 May 2018 16:55

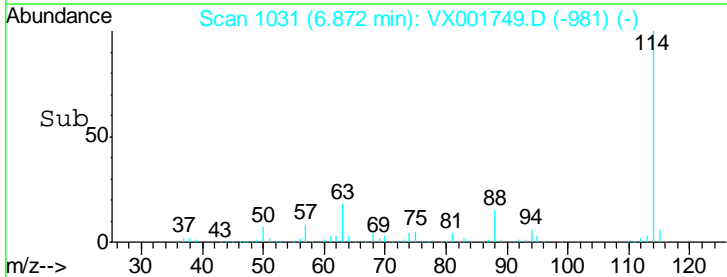
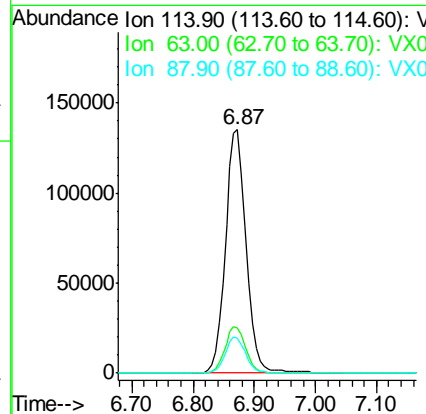
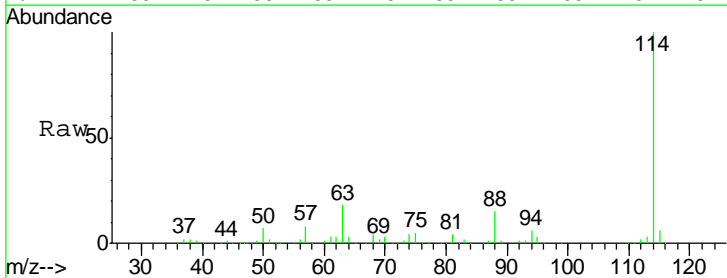
Instrument :
 MSVOA_X
ClientSampleId :
 KY062MW145-180503

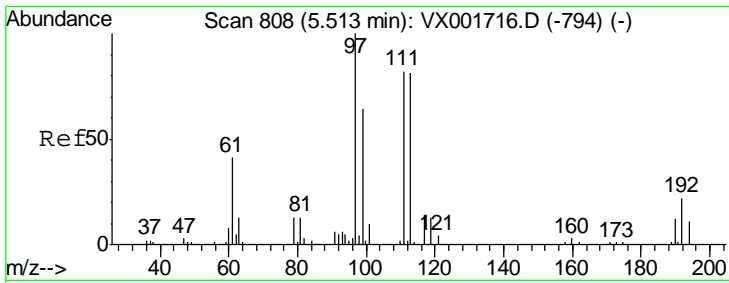
Tgt Ion: 65 Resp: 180779
 Ion Ratio Lower Upper
 65 100
 67 51.3 0.0 102.8



#34
 1,4-Difluorobenzene
 Concen: 50.00 ug/l
 RT: 6.87 min Scan# 1031
 Delta R.T. 0.01 min
 Lab File: VX001749.D
 Acq: 15 May 2018 16:55

Tgt Ion: 114 Resp: 320166
 Ion Ratio Lower Upper
 114 100
 63 18.4 0.0 37.0
 88 14.6 0.0 29.8

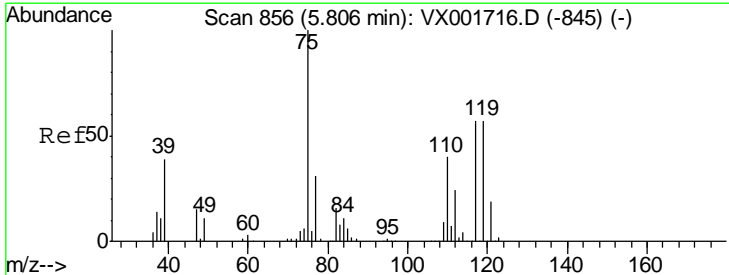
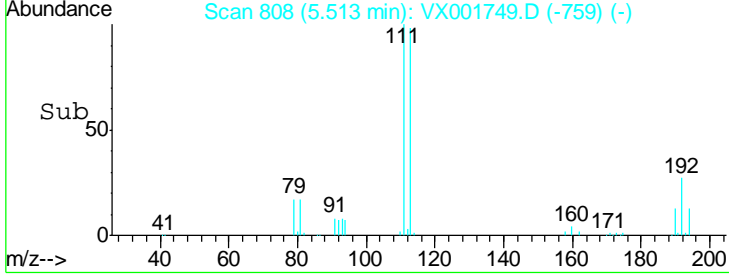
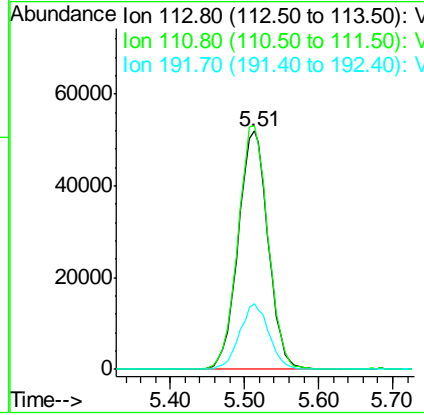
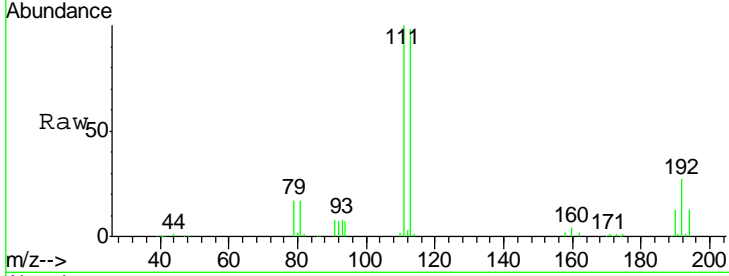




#35
 Dibromofluoromethane
 Concen: 54.12 ug/l
 RT: 5.51 min Scan# 808
 Delta R.T. -0.00 min
 Lab File: VX001749.D
 Acq: 15 May 2018 16:55

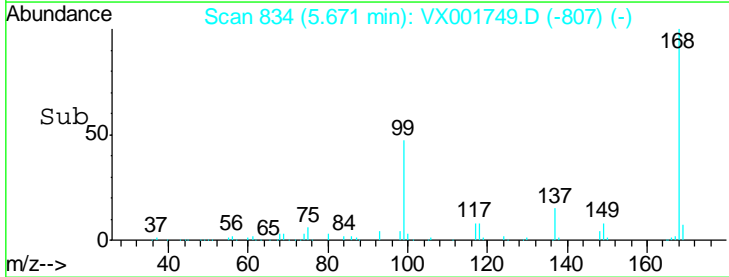
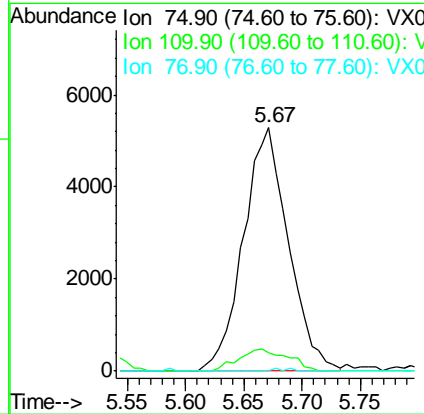
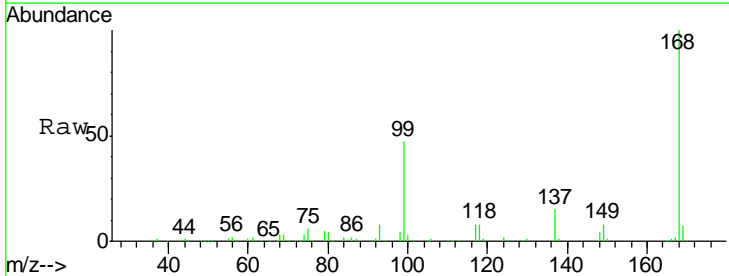
Instrument :
 MSVOA_X
ClientSampled :
 KY062MW145-180503

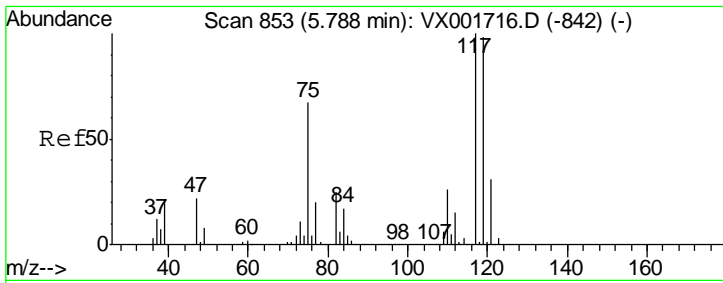
Tgt Ion	Resp	Lower	Upper
113	146239		
111	102.8	82.0	123.0
192	27.0	21.6	32.4



#36
 1,1-Dichloropropene
 Concen: 3.85 ug/l
 RT: 5.67 min Scan# 834
 Delta R.T. -0.13 min
 Lab File: VX001749.D
 Acq: 15 May 2018 16:55

Tgt Ion	Resp	Lower	Upper
75	14188		
110	9.9	19.1	57.1#
77	0.0	24.6	37.0#

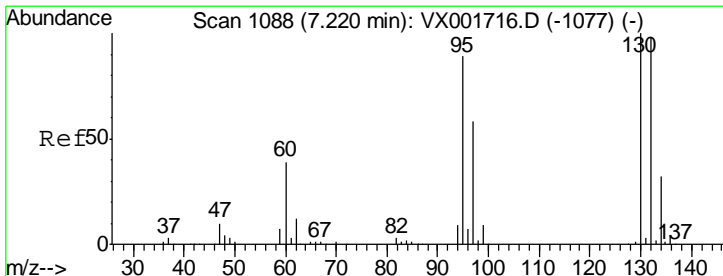
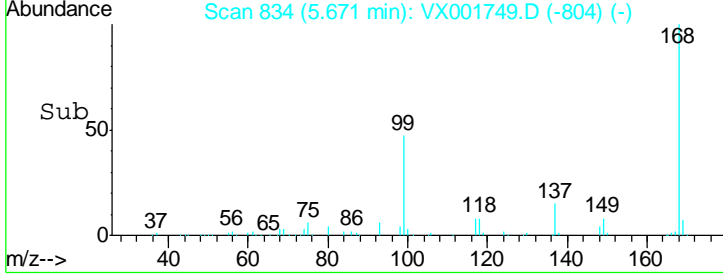
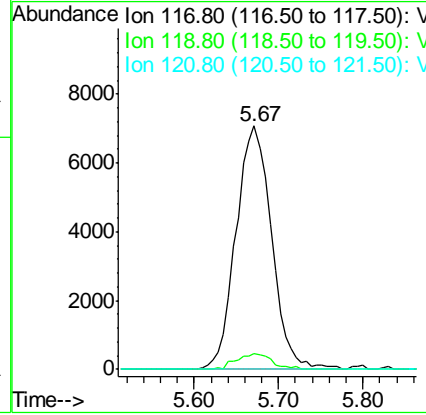
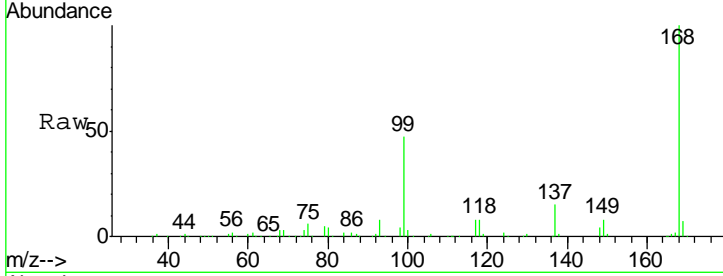




#38
 Carbon Tetrachloride
 Concen: 5.25 ug/l
 RT: 5.67 min Scan# 834
 Delta R.T. -0.12 min
 Lab File: VX001749.D
 Acq: 15 May 2018 16:55

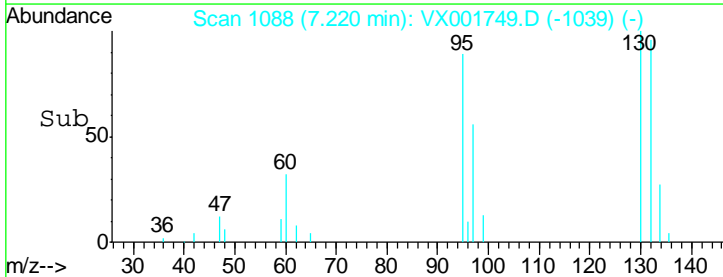
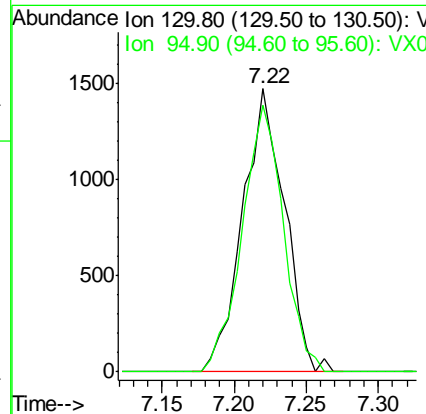
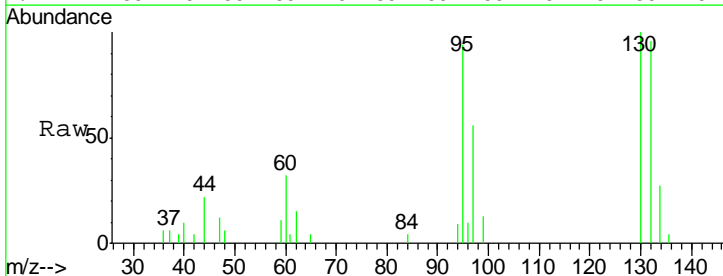
Instrument :
 MSVOA_X
ClientSampled :
 KY062MW145-180503

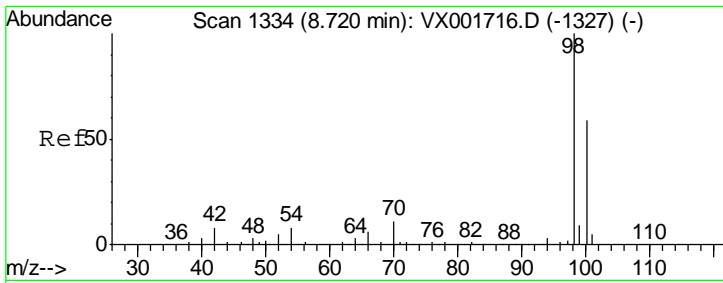
Tgt Ion	Resp	Lower	Upper
117	100		
119	6.4	77.6	116.4#
121	0.0	24.6	36.8#



#44
 Trichloroethene
 Concen: 0.88 ug/l
 RT: 7.22 min Scan# 1088
 Delta R.T. -0.00 min
 Lab File: VX001749.D
 Acq: 15 May 2018 16:55

Tgt Ion	Resp	Lower	Upper
130	100		
95	94.4	0.0	177.2

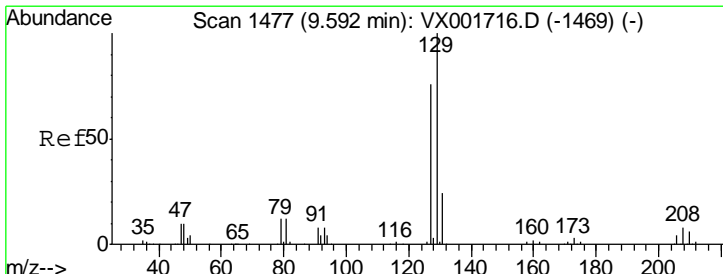
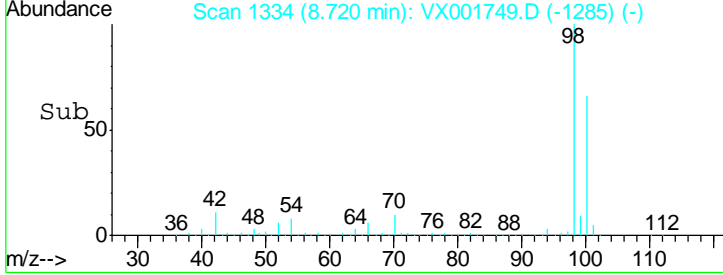
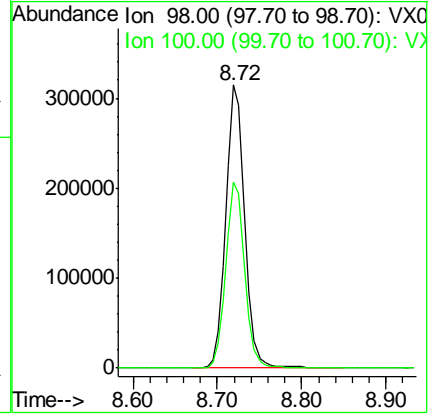
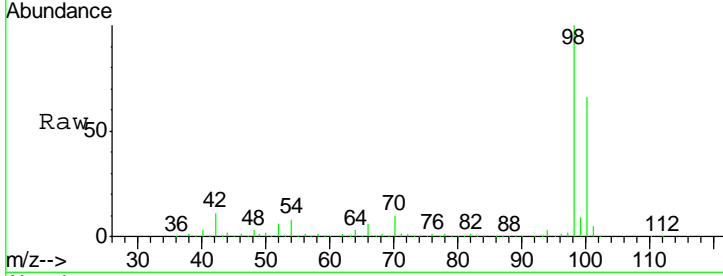




#50
 Toluene-d8
 Concen: 50.49 ug/l
 RT: 8.72 min Scan# 1334
 Delta R.T. -0.00 min
 Lab File: VX001749.D
 Acq: 15 May 2018 16:55

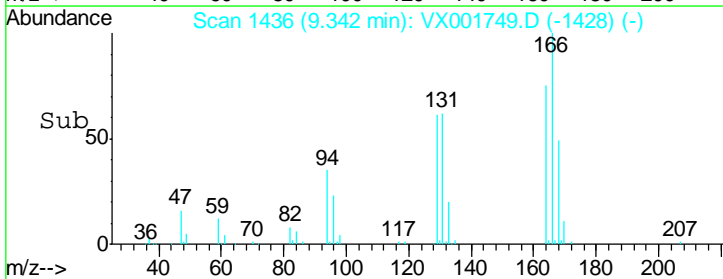
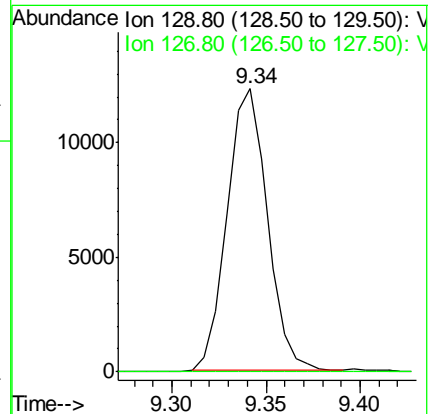
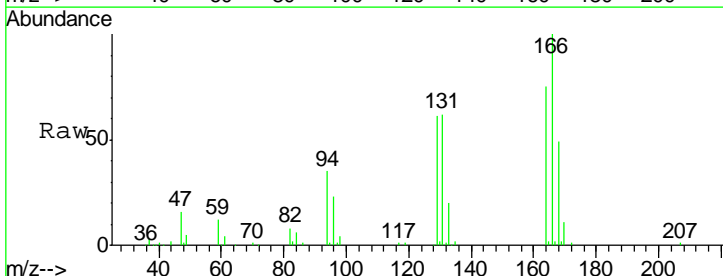
Instrument :
 MSVOA_X
 ClientSampled :
 KY062MW145-180503

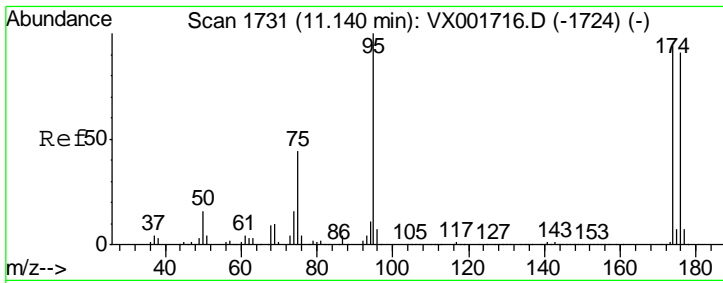
Tgt Ion: 98 Resp: 488615
 Ion Ratio Lower Upper
 98 100
 100 66.5 54.0 81.0



#60
 Dibromochloromethane
 Concen: 6.67 ug/l
 RT: 9.34 min Scan# 1436
 Delta R.T. -0.25 min
 Lab File: VX001749.D
 Acq: 15 May 2018 16:55

Tgt Ion: 129 Resp: 18223
 Ion Ratio Lower Upper
 129 100
 127 0.0 38.7 116.1#

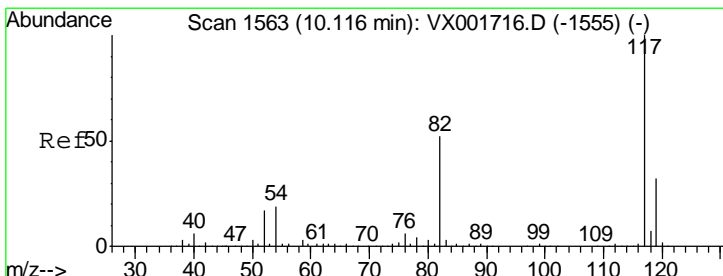
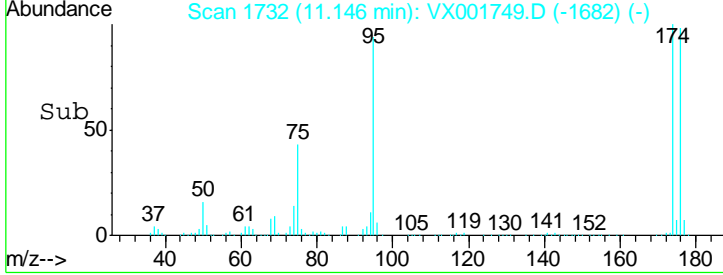
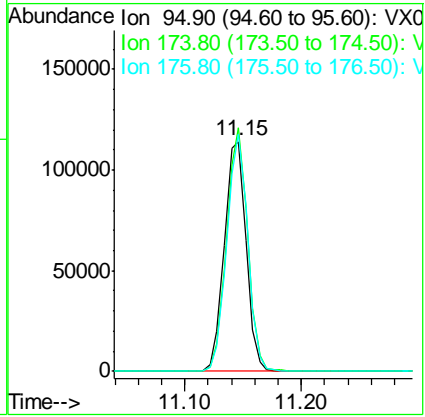
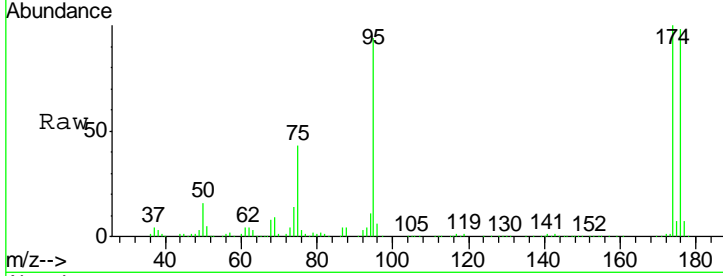




#62
 4-Bromofluorobenzene
 Concen: 42.55 ug/l
 RT: 11.15 min Scan# 1732
 Delta R.T. 0.01 min
 Lab File: VX001749.D
 Acq: 15 May 2018 16:55

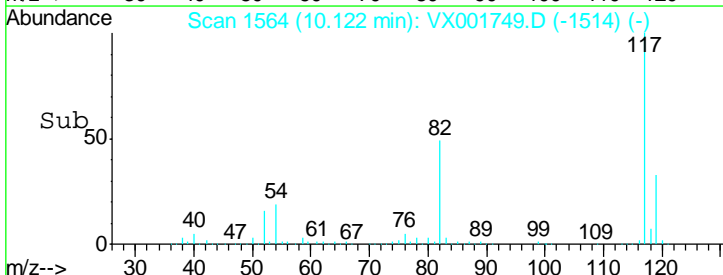
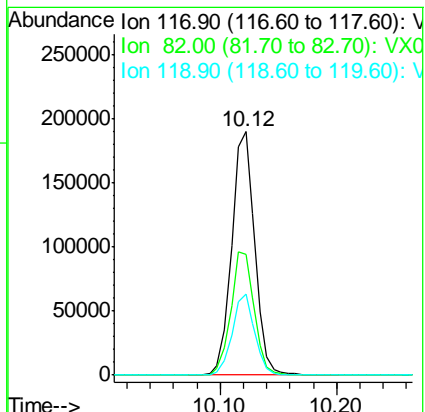
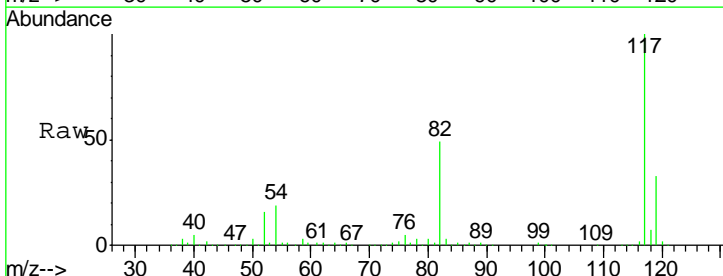
Instrument : MSVOA_X
 ClientSampled : KY062MW145-180503

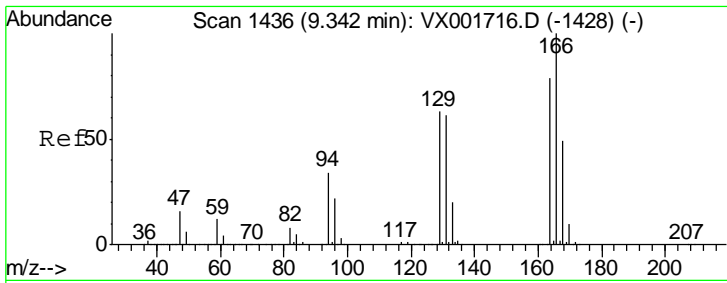
Tgt Ion	Resp	Lower	Upper
95	148242		
174	102.4	0.0	201.8
176	99.4	0.0	196.8



#63
 Chlorobenzene-d5
 Concen: 50.00 ug/l
 RT: 10.12 min Scan# 1564
 Delta R.T. 0.01 min
 Lab File: VX001749.D
 Acq: 15 May 2018 16:55

Tgt Ion	Resp	Lower	Upper
117	261288		
82	49.5	41.4	62.2
119	33.1	25.6	38.4

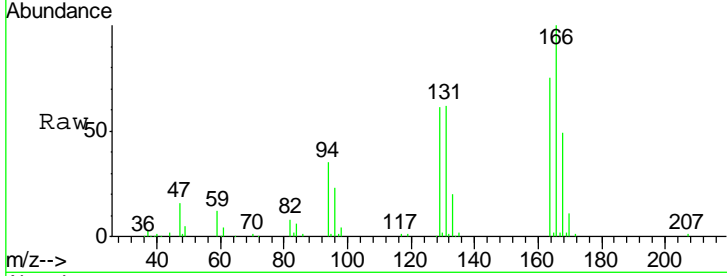




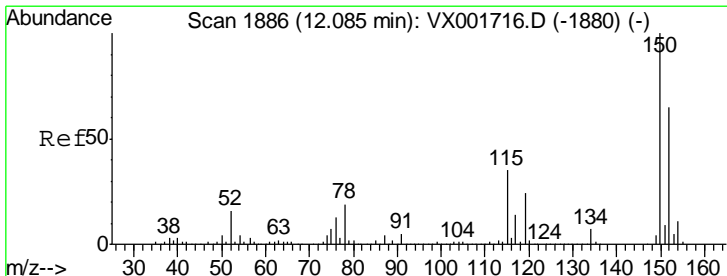
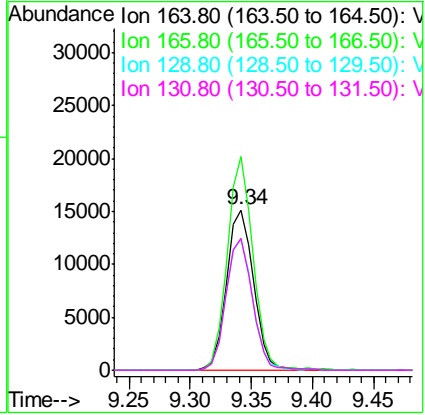
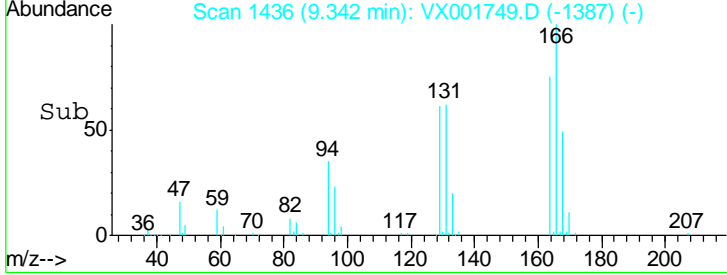
#64

Tetrachloroethene
 Concen: 6.82 ug/l
 RT: 9.34 min Scan# 1436
 Delta R.T. -0.00 min
 Lab File: VX001749.D
 Acq: 15 May 2018 16:55

Instrument : MSVOA_X
 ClientSampleId : KY062MW145-180503

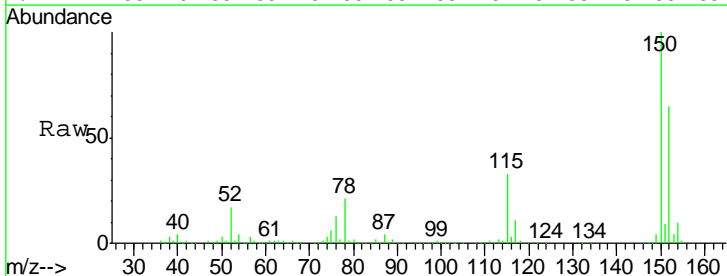


Tgt Ion	Resp	Lower	Upper
164	100		
166	133.2	101.8	152.8
129	81.5	63.8	95.6
131	82.4	62.2	93.2

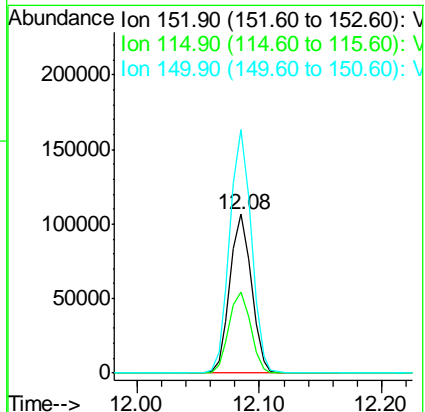
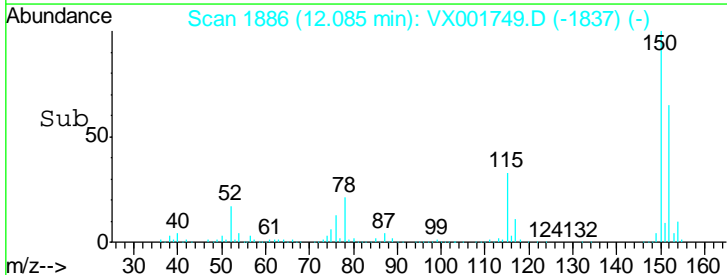


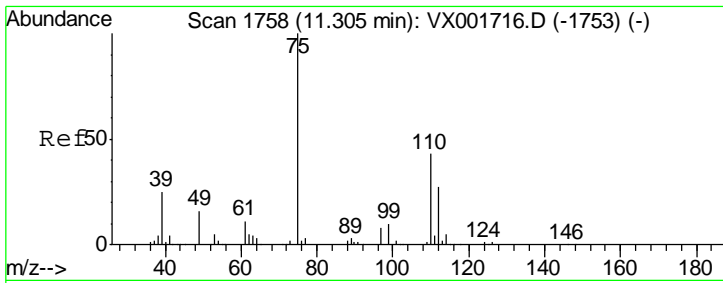
#72

1,4-Dichlorobenzene-d4
 Concen: 50.00 ug/l
 RT: 12.08 min Scan# 1886
 Delta R.T. -0.00 min
 Lab File: VX001749.D
 Acq: 15 May 2018 16:55



Tgt Ion	Resp	Lower	Upper
152	100		
115	51.6	37.4	112.2
150	154.3	0.0	344.8

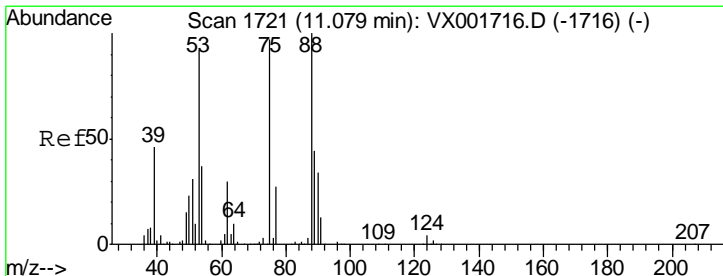
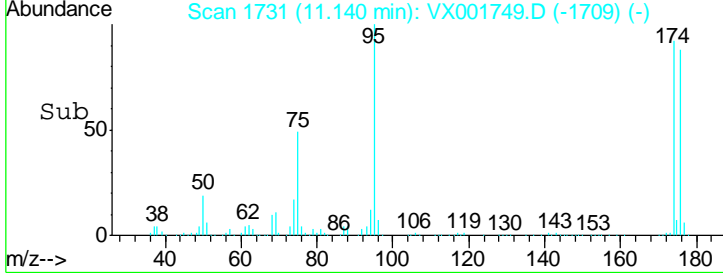
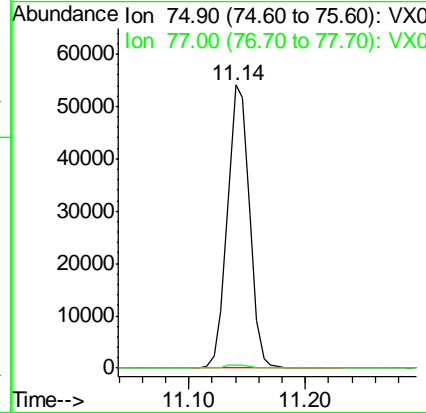
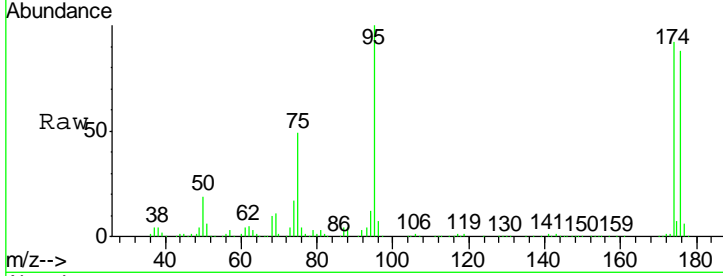




#76
 1,2,3-Trichloropropane
 Concen: 28.77 ug/l
 RT: 11.14 min Scan# 1731
 Delta R.T. -0.16 min
 Lab File: VX001749.D
 Acq: 15 May 2018 16:55

Instrument :
 MSVOA_X
 ClientSampled :
 KY062MW145-180503

Tgt Ion: 75 Resp: 70734
 Ion Ratio Lower Upper
 75 100
 77 1.3 18.9 56.7#



#81
 trans-1,4-Dichloro-2-butene
 Concen: 83.38 ug/l
 RT: 11.14 min Scan# 1731
 Delta R.T. 0.06 min
 Lab File: VX001749.D
 Acq: 15 May 2018 16:55

Tgt Ion: 75 Resp: 70734
 Ion Ratio Lower Upper
 75 100
 53 0.2 79.4 119.2#
 89 0.0 38.8 58.2#

