

Data Path : W:\HPCHEM1\MSVOA X\DATA\VX051518\
 Data File : VX001720.D
 Acq On : 14 May 2018 20:30
 Operator : JC/MD
 Sample : VX0515WBL01
 Misc : 5.0mL/MSVOA X/WATER
 ALS Vial : 17 Sample Multiplier: 1

Instrument :
 MSVOA_X
 ClientSampleId :
 VX0515WBL01

Integration Parameters: RTEINT.P
 Integrator: RTE
 Smoothing : ON Filtering: 5
 Sampling : 1 Min Area: 3 % of largest Peak
 Start Thrs: 0.2 Max Peaks: 100
 Stop Thrs : 0 Peak Location: TOP

If leading or trailing edge < 100 prefer < Baseline drop else tangent >
 Peak separation: 5

Method : W:\HPCHEM1\MSVOA_X\METHOD\82X051518W.M
 Title : SW846 8260

Signal : TIC

peak #	R.T. min	first scan	max scan	last scan	PK TY	peak height	corr. area	corr. % max.	% of total
1	1.075	76	80	94	rBV	1135118	1412570	100.00%	17.030%
2	5.513	795	808	822	rBV	168338	479704	33.96%	5.783%
3	5.672	822	834	849	rVV	257638	726562	51.44%	8.759%
4	6.074	890	900	919	rBV	182774	472387	33.44%	5.695%
5	6.867	1020	1030	1047	rBV	363620	852623	60.36%	10.279%
6	8.720	1327	1334	1343	rBV	870663	1350594	95.61%	16.282%
7	10.116	1557	1563	1578	rBV	676440	946543	67.01%	11.411%
8	11.146	1726	1732	1747	rBV	684626	899609	63.69%	10.845%
9	12.085	1880	1886	1898	rVB	905031	1118936	79.21%	13.490%
10	12.396	1933	1937	1944	rVB	14539	18952	1.34%	0.228%
11	13.652	2138	2143	2147	rBV	13249	16355	1.16%	0.197%

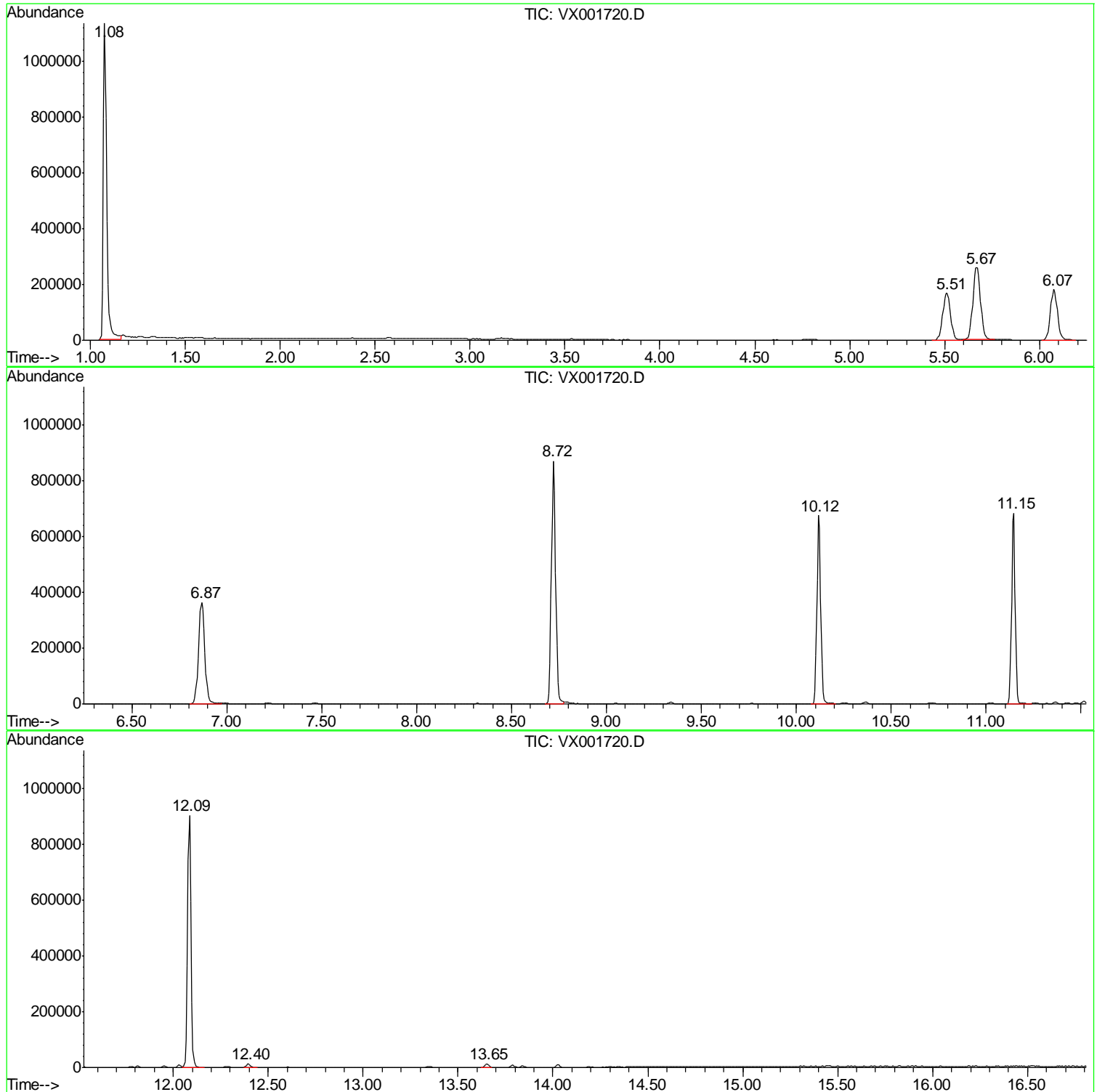
Sum of corrected areas: 8294835

Data Path : W:\HPCHEM1\MSVOA X\DATA\VX051518\
Data File : VX001720.D
Acq On : 14 May 2018 20:30
Operator : JC/MD
Sample : VX0515WBL01
Misc : 5.0mL/MSVOA X/WATER
ALS Vial : 17 Sample Multiplier: 1

Instrument :
MSVOA_X
ClientSampled :
VX0515WBL01

Quant Method : W:\HPCHEM1\MSVOA_X\METHOD\82X051518W.M
Quant Title : SW846 8260

TIC Library : C:\DATABASE\NIST11.L
TIC Integration Parameters: LSCINT.P



Data Path : W:\HPCHEM1\MSVOA_X\DATA\VX051518\
Data File : VX001720.D
Acq On : 14 May 2018 20:30
Operator : JC/MD
Sample : VX0515WBL01
Misc : 5.0mL/MSVOA_X/WATER
ALS Vial : 17 Sample Multiplier: 1

Instrument :
MSVOA_X
ClientSampleId :
VX0515WBL01

Quant Method : W:\HPCHEM1\MSVOA_X\METHOD\82X051518W.M
Quant Title : SW846 8260

TIC Library : C:\DATABASE\NIST11.L
TIC Integration Parameters: LSCINT.P

No Library Search Compounds Detected

Data Path : W:\HPCHEM1\MSVOA_X\DATA\VX051518\
Data File : VX001720.D
Acq On : 14 May 2018 20:30
Operator : JC/MD
Sample : VX0515WBL01
Misc : 5.0mL/MSVOA_X/WATER
ALS Vial : 17 Sample Multiplier: 1

Instrument :
MSVOA_X
ClientSampleId :
VX0515WBL01

Quant Method : W:\HPCHEM1\MSVOA_X\METHOD\82X051518W.M
Quant Title : SW846 8260

TIC Library : C:\DATABASE\NIST11.L
TIC Integration Parameters: LSCINT.P

TIC Top Hit name	RT	EstConc	Units	Response	--Internal Standard--			
					#	RT	Resp	Conc
