

Data Path : W:\HPCHEM1\MSVOA X\DATA\VX051618\  
 Data File : VX001772.D  
 Acq On : 16 May 2018 18:44  
 Operator : JC/MD  
 Sample : J2853-02  
 Misc : 5.0mL/MSVOA X/WATER  
 ALS Vial : 14 Sample Multiplier: 1

Instrument :  
 MSVOA\_X  
 ClientSampleId :  
 KY074MW067-180507

Quant Time: May 17 04:12:39 2018  
 Quant Method : W:\HPCHEM1\MSVOA\_X\METHOD\82X051518W.M  
 Quant Title : SW846 8260  
 QLast Update : Tue May 15 01:36:22 2018  
 Response via : Initial Calibration

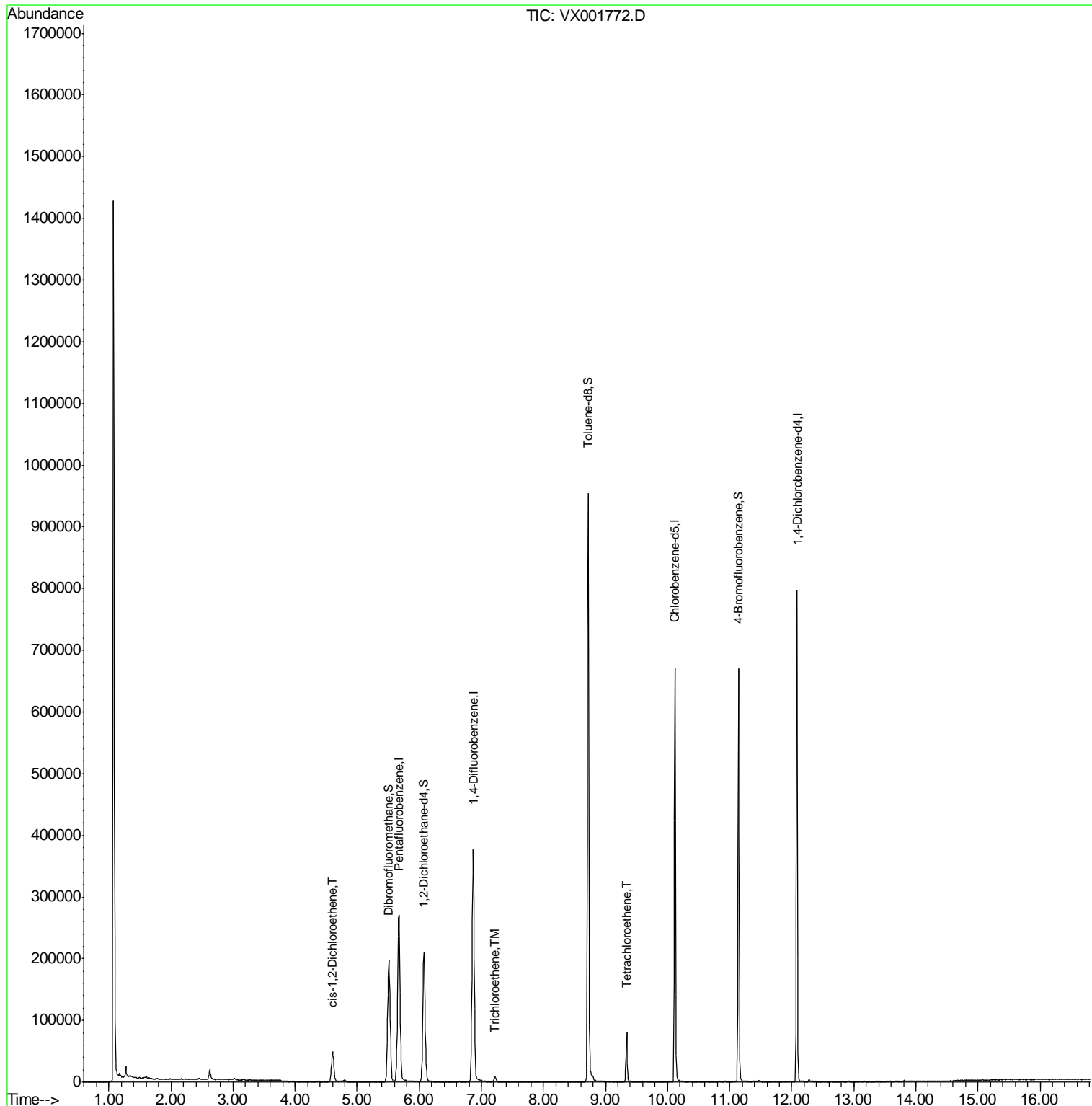
Internal Standards	R.T.	QIon	Response	Conc	Units	Dev(Min)
1) Pentafluorobenzene	5.67	168	294024	50.00	ug/l	0.00
34) 1,4-Difluorobenzene	6.87	114	401262	50.00	ug/l	0.00
63) Chlorobenzene-d5	10.12	117	330558	50.00	ug/l	0.00
72) 1,4-Dichlorobenzene-d4	12.09	152	172015	50.00	ug/l	0.00
System Monitoring Compounds						
33) 1,2-Dichloroethane-d4	6.07	65	199597	50.65	ug/l	0.00
Spiked Amount	50.000		Recovery	=	101.30%	
35) Dibromofluoromethane	5.51	113	162007	47.84	ug/l	0.00
Spiked Amount	50.000		Recovery	=	95.68%	
50) Toluene-d8	8.72	98	574774	47.39	ug/l	0.00
Spiked Amount	50.000		Recovery	=	94.78%	
62) 4-Bromofluorobenzene	11.15	95	167805	38.43	ug/l	0.00
Spiked Amount	50.000		Recovery	=	76.86%	
Target Compounds						
27) cis-1,2-Dichloroethene	4.60	96	30260	8.31	ug/l	93
44) Trichloroethene	7.22	130	3155	0.75	ug/l	78
64) Tetrachloroethene	9.34	164	17477	4.06	ug/l	98

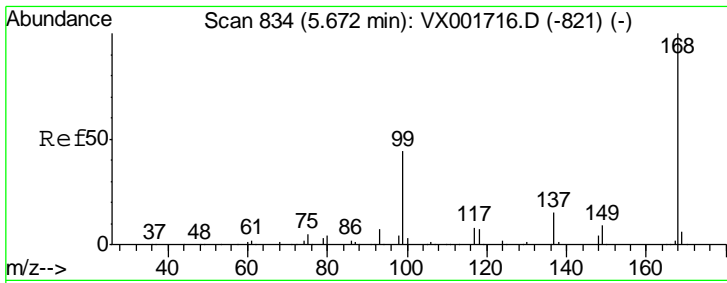
(#) = qualifier out of range (m) = manual integration (+) = signals summed

Data Path : W:\HPCHEM1\MSVOA X\DATA\VX051618\  
 Data File : VX001772.D  
 Acq On : 16 May 2018 18:44  
 Operator : JC/MD  
 Sample : J2853-02  
 Misc : 5.0mL/MSVOA X/WATER  
 ALS Vial : 14 Sample Multiplier: 1

**Instrument :**  
 MSVOA\_X  
**ClientSampleId :**  
 KY074MW067-180507

Quant Time: May 17 04:12:39 2018  
 Quant Method : W:\HPCHEM1\MSVOA\_X\METHOD\82X051518W.M  
 Quant Title : SW846 8260  
 QLast Update : Tue May 15 01:36:22 2018  
 Response via : Initial Calibration

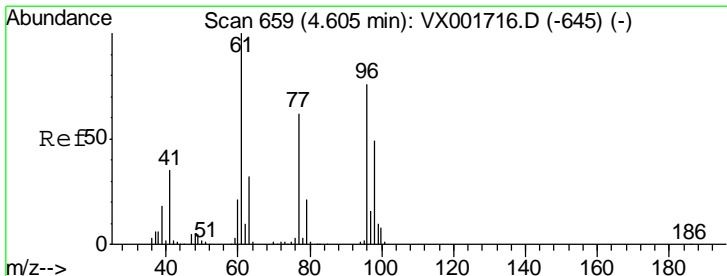
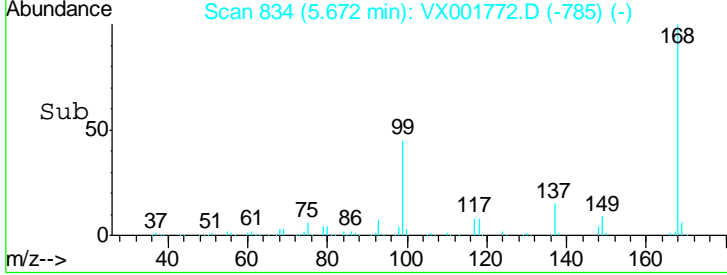
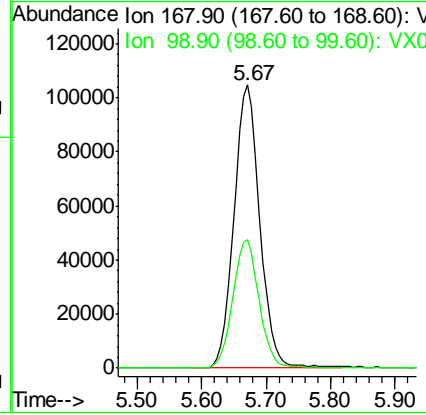
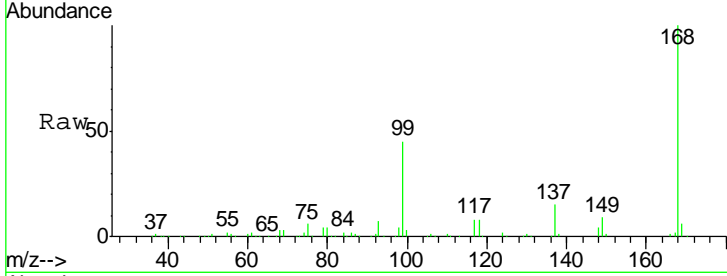




#1  
 Pentafluorobenzene  
 Concen: 50.00 ug/l  
 RT: 5.67 min Scan# 834  
 Delta R.T. -0.00 min  
 Lab File: VX001772.D  
 Acq: 16 May 2018 18:44

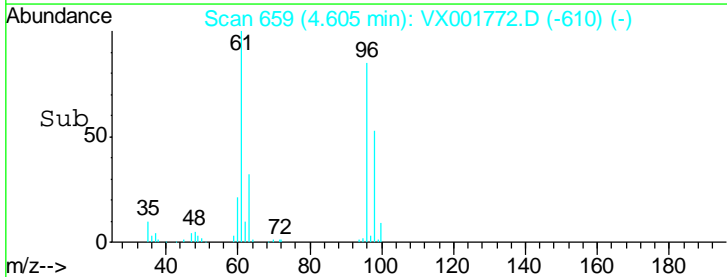
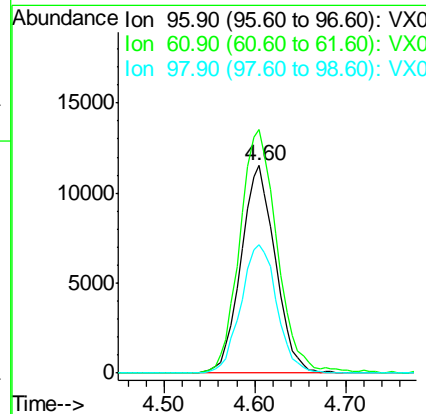
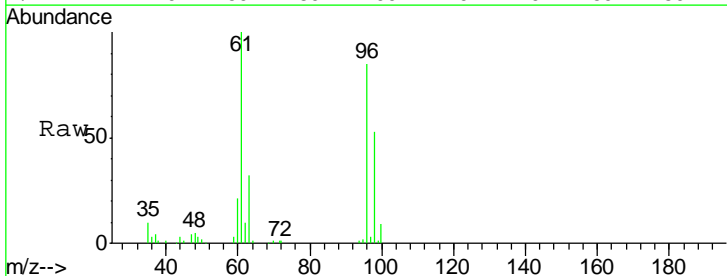
Instrument : MSVOA\_X  
 ClientSampleId : KY074MW067-180507

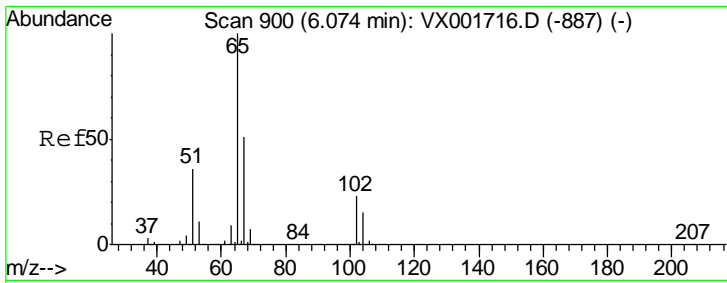
Tgt Ion	Resp	Lower	Upper
168	100		
99	45.2	35.0	52.4



#27  
 cis-1,2-Dichloroethene  
 Concen: 8.31 ug/l  
 RT: 4.60 min Scan# 659  
 Delta R.T. -0.00 min  
 Lab File: VX001772.D  
 Acq: 16 May 2018 18:44

Tgt Ion	Resp	Lower	Upper
96	100		
61	128.7	0.0	280.4
98	64.5	0.0	128.4

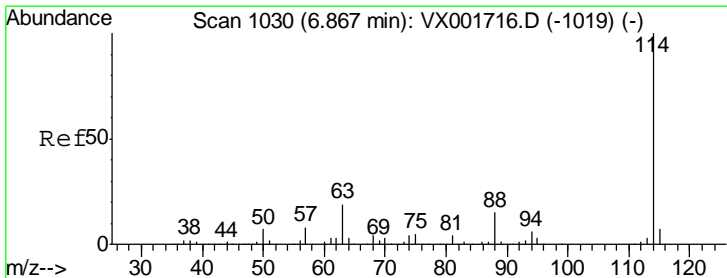
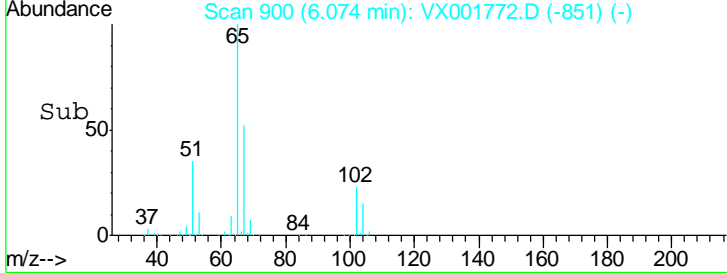
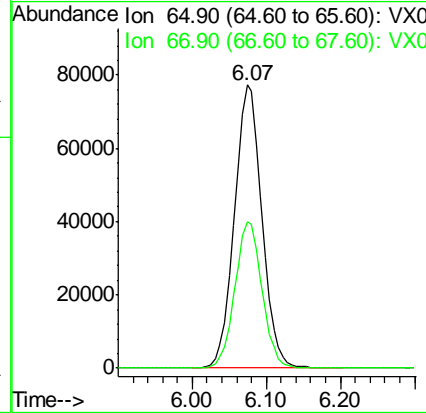
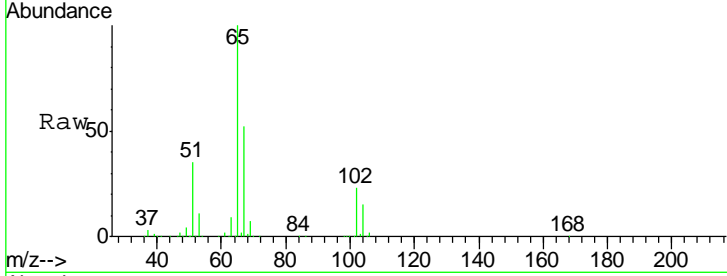




#33  
 1,2-Dichloroethane-d4  
 Concen: 50.65 ug/l  
 RT: 6.07 min Scan# 900  
 Delta R.T. -0.00 min  
 Lab File: VX001772.D  
 Acq: 16 May 2018 18:44

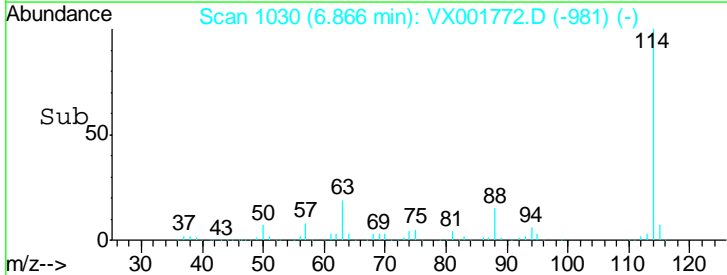
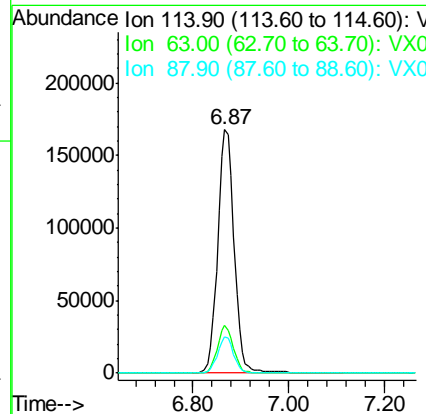
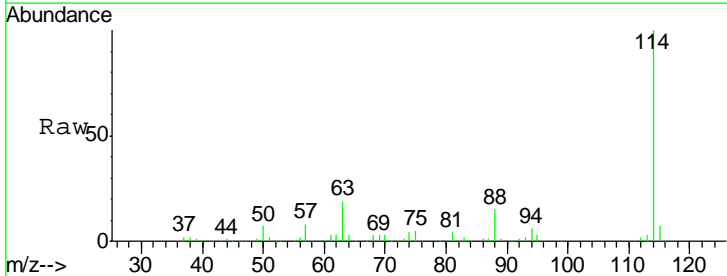
**Instrument :**  
 MSVOA\_X  
**ClientSampled :**  
 KY074MW067-180507

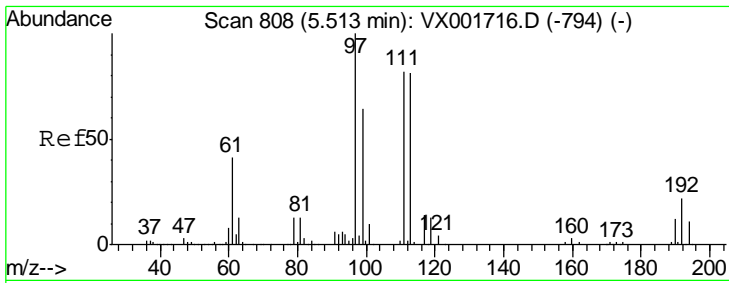
Tgt Ion	Resp	Lower	Upper
65	199597		
67	51.1	0.0	102.8



#34  
 1,4-Difluorobenzene  
 Concen: 50.00 ug/l  
 RT: 6.87 min Scan# 1030  
 Delta R.T. -0.00 min  
 Lab File: VX001772.D  
 Acq: 16 May 2018 18:44

Tgt Ion	Resp	Lower	Upper
114	401262		
63	19.4	0.0	37.0
88	14.7	0.0	29.8

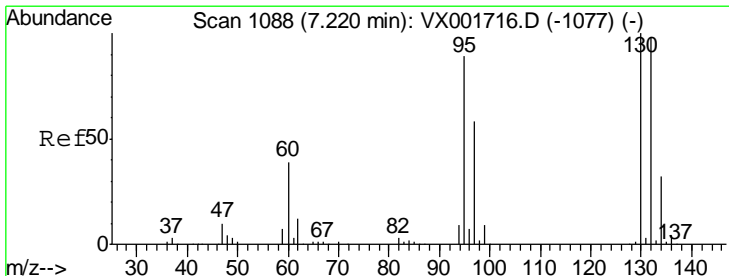
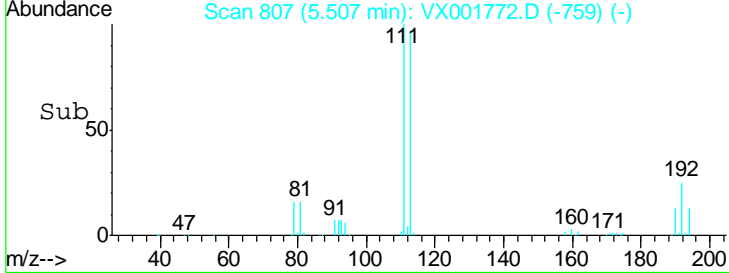
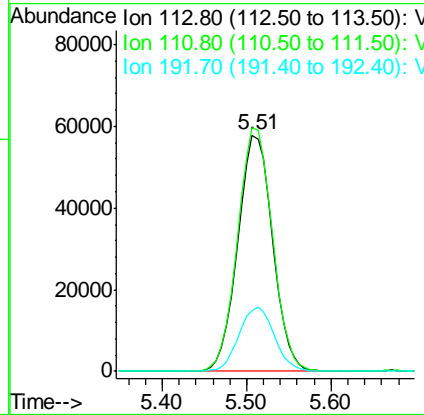
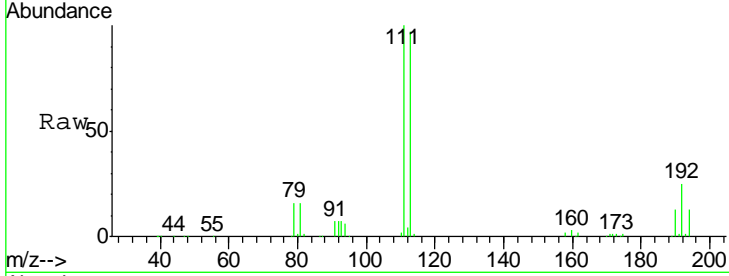




#35  
 Dibromofluoromethane  
 Concen: 47.84 ug/l  
 RT: 5.51 min Scan# 807  
 Delta R.T. -0.01 min  
 Lab File: VX001772.D  
 Acq: 16 May 2018 18:44

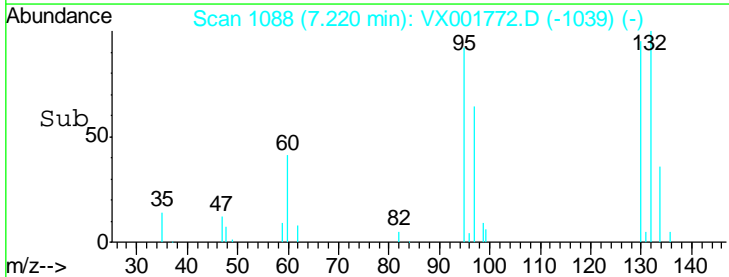
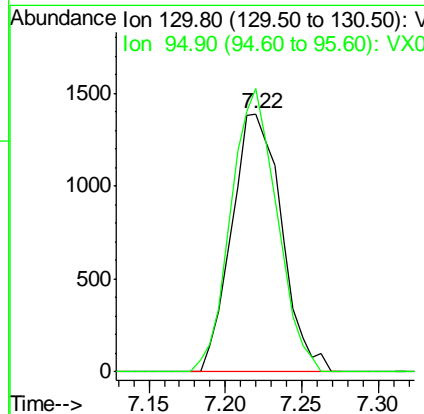
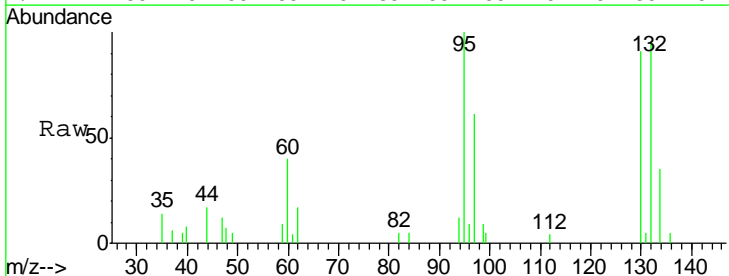
**Instrument :**  
 MSVOA\_X  
**ClientSampled :**  
 KY074MW067-180507

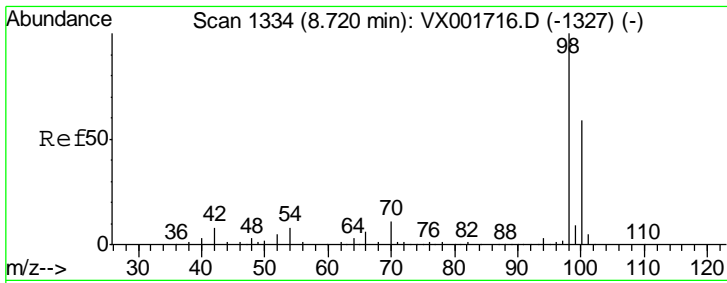
Tgt Ion	Resp	Lower	Upper
113	162007		
111	103.1	82.0	123.0
192	27.5	21.6	32.4



#44  
 Trichloroethene  
 Concen: 0.75 ug/l  
 RT: 7.22 min Scan# 1088  
 Delta R.T. -0.00 min  
 Lab File: VX001772.D  
 Acq: 16 May 2018 18:44

Tgt Ion	Resp	Lower	Upper
130	3155		
130	100		
95	109.6	0.0	177.2

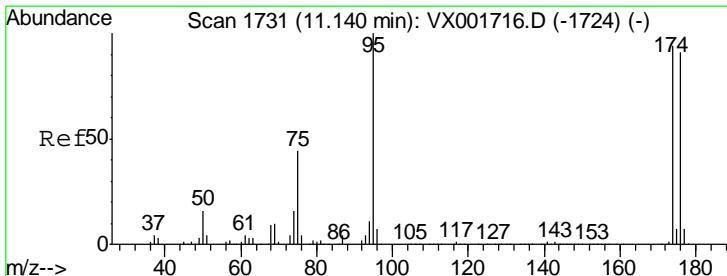
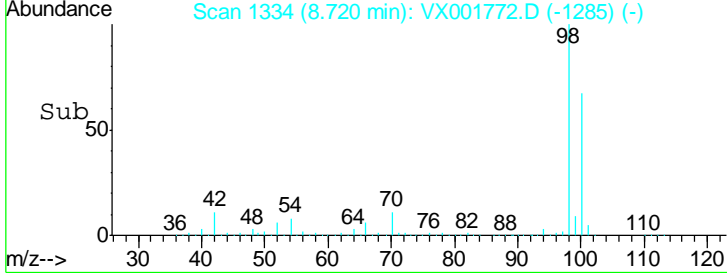
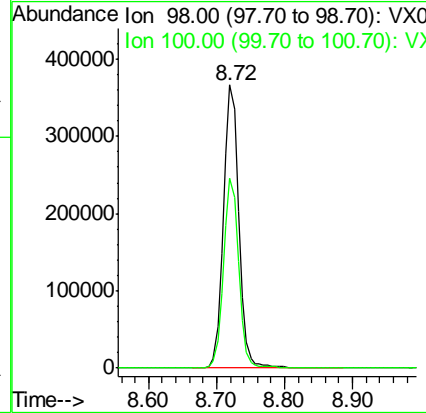
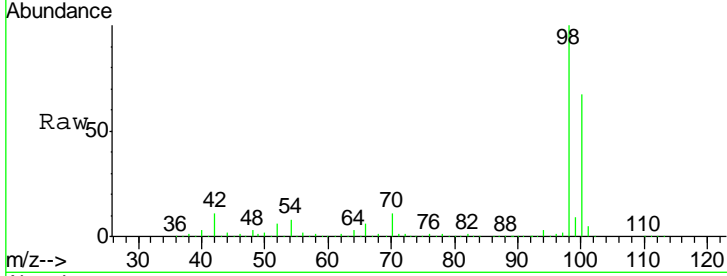




#50  
 Toluene-d8  
 Concen: 47.39 ug/l  
 RT: 8.72 min Scan# 1334  
 Delta R.T. -0.00 min  
 Lab File: VX001772.D  
 Acq: 16 May 2018 18:44

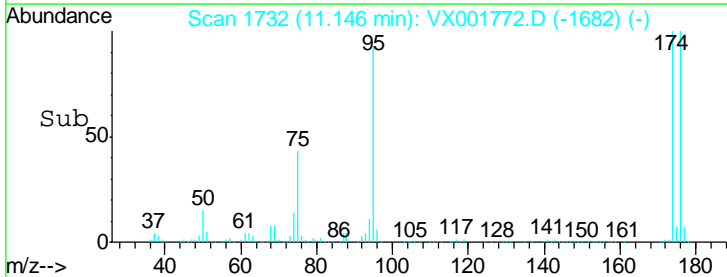
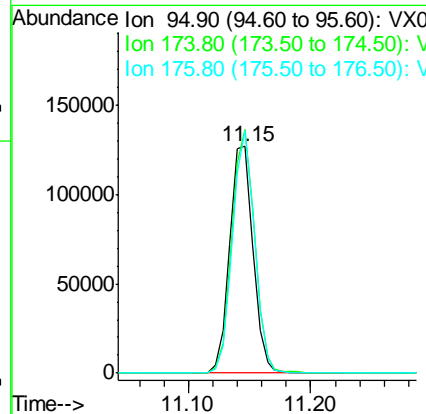
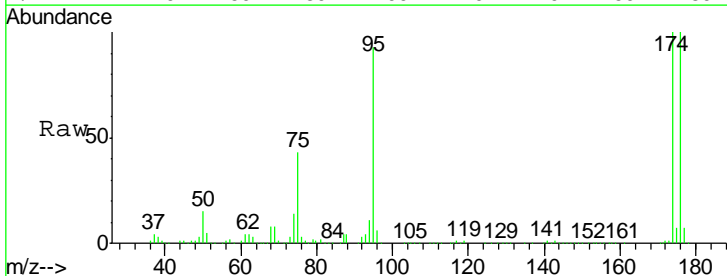
**Instrument :**  
 MSVOA\_X  
**ClientSampled :**  
 KY074MW067-180507

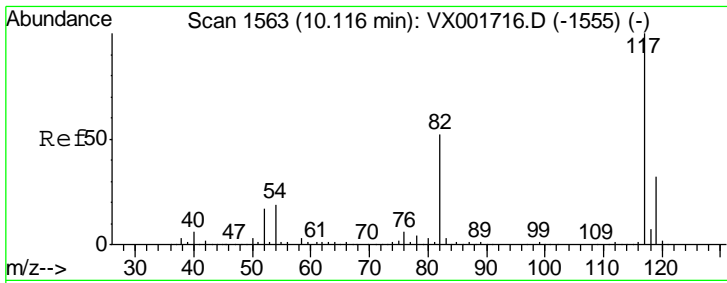
Tgt Ion: 98 Resp: 574774  
 Ion Ratio Lower Upper  
 98 100  
 100 66.5 54.0 81.0



#62  
 4-Bromofluorobenzene  
 Concen: 38.43 ug/l  
 RT: 11.15 min Scan# 1732  
 Delta R.T. 0.01 min  
 Lab File: VX001772.D  
 Acq: 16 May 2018 18:44

Tgt Ion: 95 Resp: 167805  
 Ion Ratio Lower Upper  
 95 100  
 174 104.0 0.0 201.8  
 176 100.7 0.0 196.8

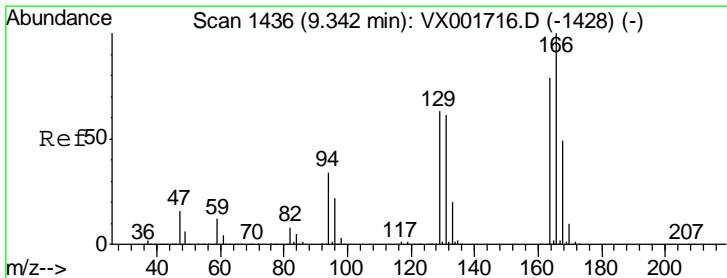
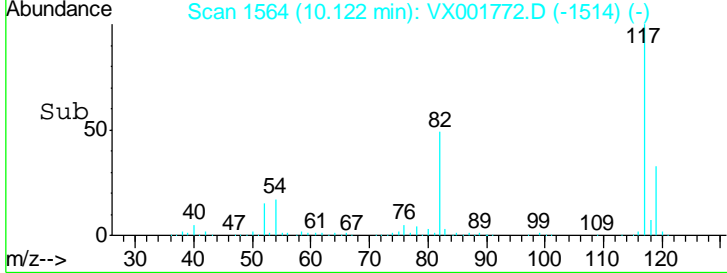
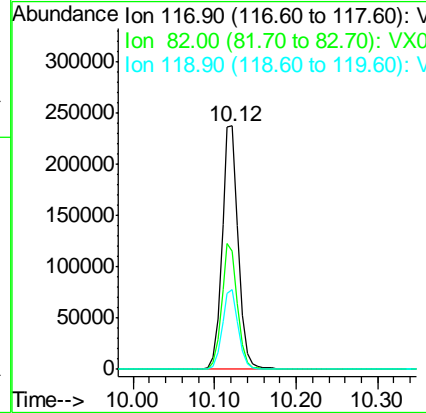
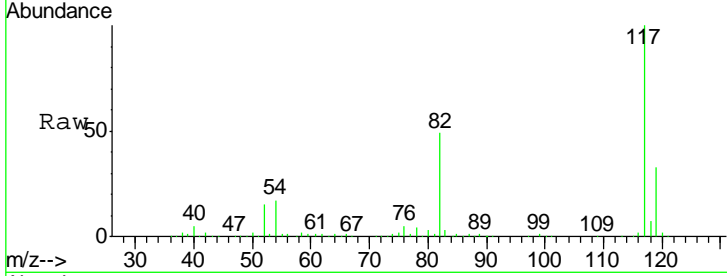




#63  
 Chlorobenzene-d5  
 Concen: 50.00 ug/l  
 RT: 10.12 min Scan# 1564  
 Delta R.T. 0.01 min  
 Lab File: VX001772.D  
 Acq: 16 May 2018 18:44

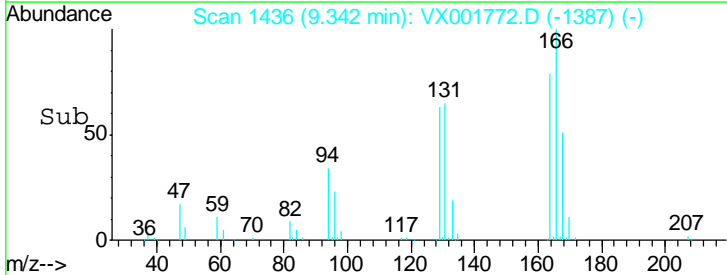
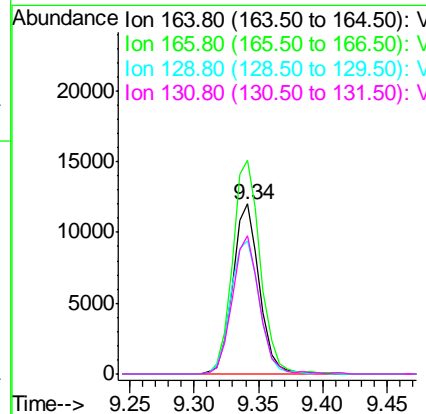
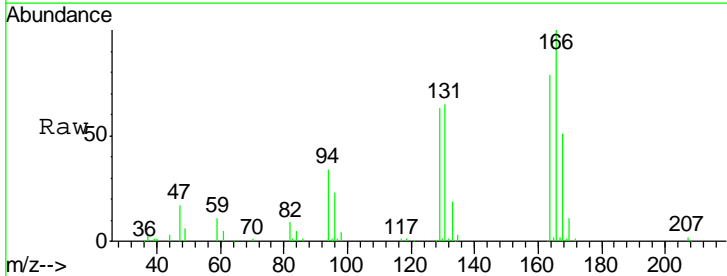
Instrument : MSVOA\_X  
 ClientSampled : KY074MW067-180507

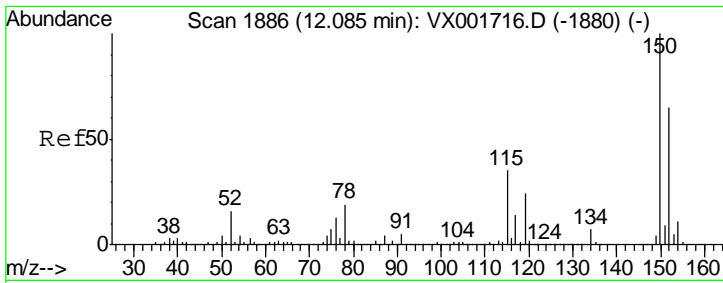
Tgt Ion	Resp	Lower	Upper
117	330558		
82	48.6	41.4	62.2
119	32.6	25.6	38.4



#64  
 Tetrachloroethene  
 Concen: 4.06 ug/l  
 RT: 9.34 min Scan# 1436  
 Delta R.T. -0.00 min  
 Lab File: VX001772.D  
 Acq: 16 May 2018 18:44

Tgt Ion	Resp	Lower	Upper
164	17477		
166	125.9	101.8	152.8
129	78.7	63.8	95.6
131	81.4	62.2	93.2





#72  
 1,4-Dichlorobenzene-d4  
 Concen: 50.00 ug/l  
 RT: 12.09 min Scan# 1886  
 Delta R.T. -0.00 min  
 Lab File: VX001772.D  
 Acq: 16 May 2018 18:44

Instrument : MSVOA\_X  
 ClientSampleId : KY074MW067-180507

Tot Ion	Resp	Lower	Upper
152	172015		
115	51.9	37.4	112.2
150	155.2	0.0	344.8

