

Data Path : W:\HPCHEM1\MSVOA_X\DATA\VX051718\
 Data File : VX001795.D
 Acq On : 17 May 2018 17:20
 Operator : JC/MD
 Sample : J2853-18
 Misc : 5.0mL/MSVOA_X/WATER
 ALS Vial : 15 Sample Multiplier: 1

Instrument :
 MSVOA_X
 ClientSampleId :
 ST008MW157-180508

Quant Time: May 18 03:59:11 2018
 Quant Method : W:\HPCHEM1\MSVOA_X\METHOD\82X051518W.M
 Quant Title : SW846 8260
 QLast Update : Tue May 15 01:36:22 2018
 Response via : Initial Calibration

Internal Standards	R.T.	QIon	Response	Conc	Units	Dev(Min)
1) Pentafluorobenzene	5.67	168	279040	50.00	ug/l	0.00
34) 1,4-Difluorobenzene	6.87	114	378673	50.00	ug/l	0.00
63) Chlorobenzene-d5	10.12	117	303484	50.00	ug/l	0.00
72) 1,4-Dichlorobenzene-d4	12.09	152	155162	50.00	ug/l	0.00

System Monitoring Compounds

33) 1,2-Dichloroethane-d4	6.08	65	214148	57.26	ug/l	0.00
Spiked Amount	50.000		Recovery	=	114.52%	
35) Dibromofluoromethane	5.51	113	182809	57.21	ug/l	0.00
Spiked Amount	50.000		Recovery	=	114.42%	
50) Toluene-d8	8.72	98	635915	55.56	ug/l	0.00
Spiked Amount	50.000		Recovery	=	111.12%	
62) 4-Bromofluorobenzene	11.14	95	183257	44.47	ug/l	0.00
Spiked Amount	50.000		Recovery	=	88.94%	

Target Compounds

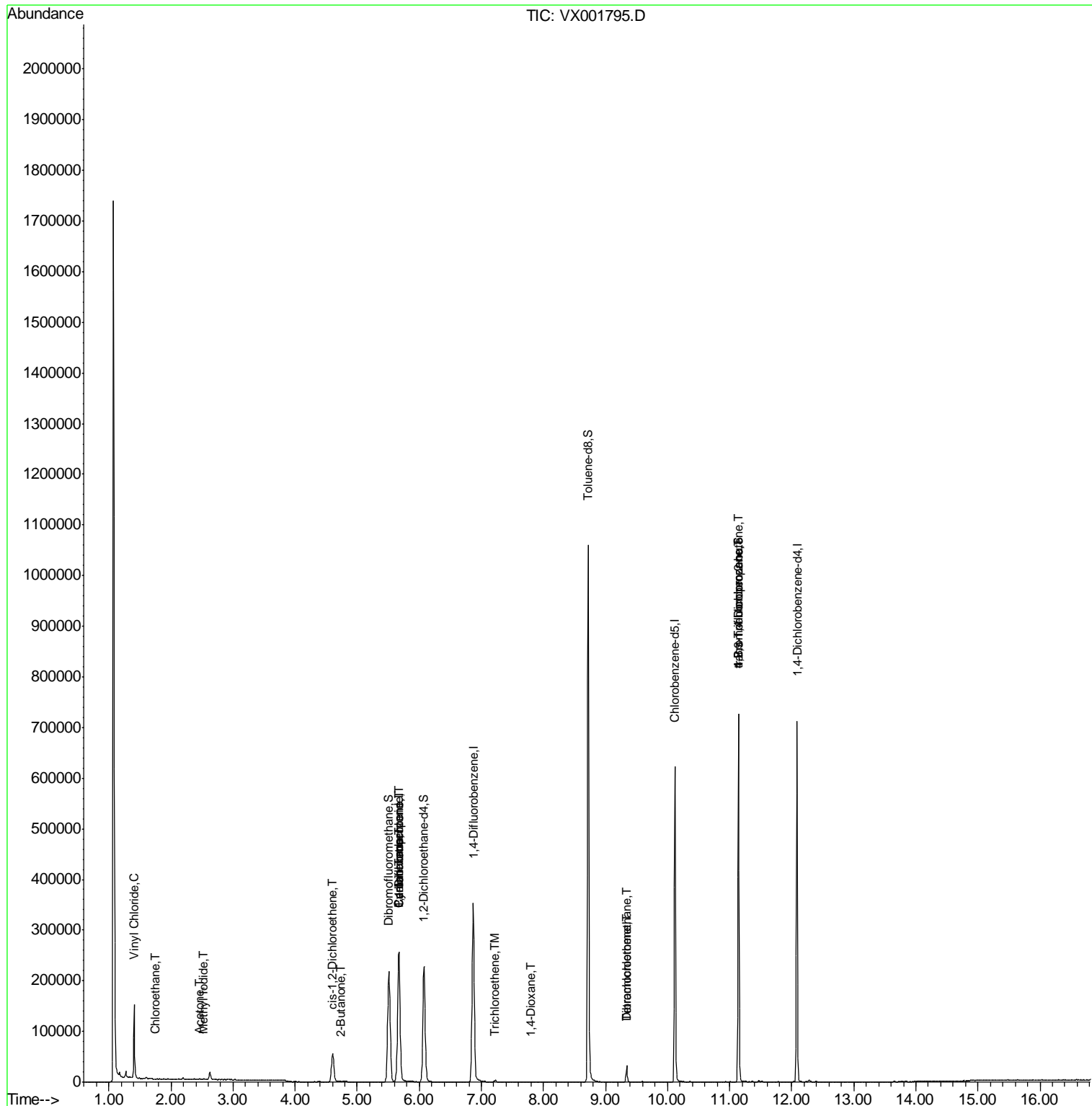
						Qvalue
4) Vinyl Chloride	1.40	62	92102	28.16	ug/l	99
5) Bromomethane	1.65	94	1379	Below	Cal	94
6) Chloroethane	1.74	64	1174	0.57	ug/l #	43
10) Methyl Iodide	2.53	142	1324	0.50	ug/l #	89
16) Acetone	2.45	43	2536	1.73	ug/l #	88
25) 2-Butanone	4.74	43	1062	0.47	ug/l #	78
27) cis-1,2-Dichloroethene	4.60	96	37029	10.71	ug/l	91
31) Cyclohexane	5.67	56	4265	0.91	ug/l #	1
36) 1,1-Dichloropropene	5.67	75	16315	3.74	ug/l #	49
38) Carbon Tetrachloride	5.67	117	22756	4.98	ug/l #	16
44) Trichloroethene	7.23	130	1349	0.34	ug/l	81
49) 1,4-Dioxane	7.79	88	42	0.58	ug/l #	58
60) Dibromochloromethane	9.34	129	5954	1.84	ug/l #	11
64) Tetrachloroethene	9.34	164	7262	1.84	ug/l	96
76) 1,2,3-Trichloropropane	11.14	75	86239	29.23	ug/l #	39
81) trans-1,4-Dichloro-2-buten	11.14	75	86239	84.65	ug/l #	10

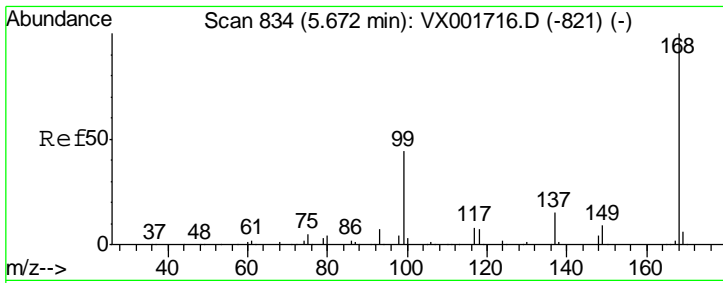
(#) = qualifier out of range (m) = manual integration (+) = signals summed

Data Path : W:\HPCHEM1\MSVOA_X\DATA\VX051718\
 Data File : VX001795.D
 Acq On : 17 May 2018 17:20
 Operator : JC/MD
 Sample : J2853-18
 Misc : 5.0mL/MSVOA_X/WATER
 ALS Vial : 15 Sample Multiplier: 1

Instrument :
 MSVOA_X
ClientSampleId :
 ST008MW157-180508

Quant Time: May 18 03:59:11 2018
 Quant Method : W:\HPCHEM1\MSVOA_X\METHOD\82X051518W.M
 Quant Title : SW846 8260
 QLast Update : Tue May 15 01:36:22 2018
 Response via : Initial Calibration

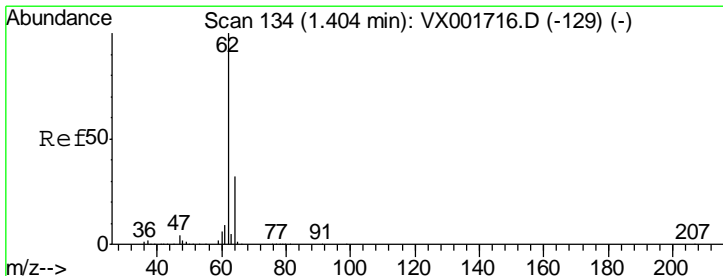
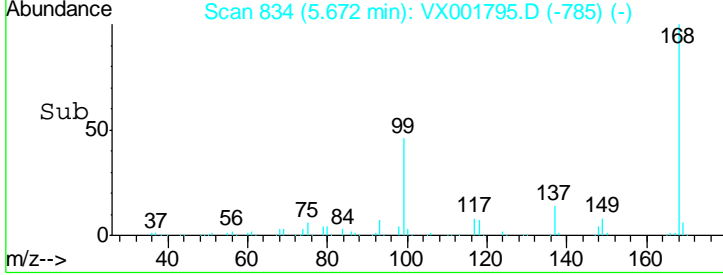
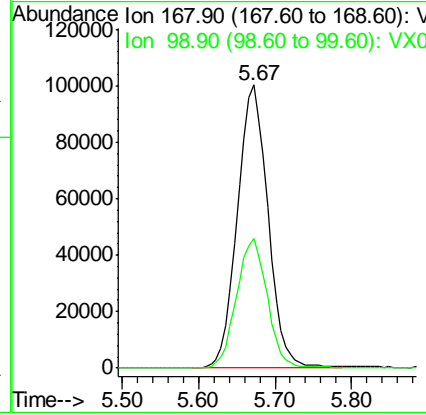
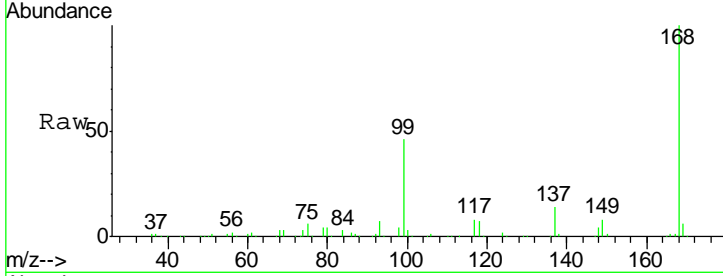




#1
 Pentafluorobenzene
 Concen: 50.00 ug/l
 RT: 5.67 min Scan# 834
 Delta R.T. 0.00 min
 Lab File: VX001795.D
 Acq: 17 May 2018 17:20

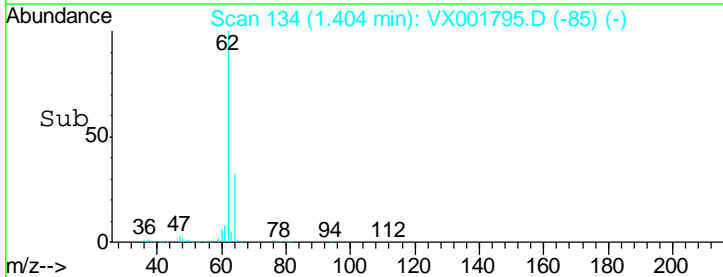
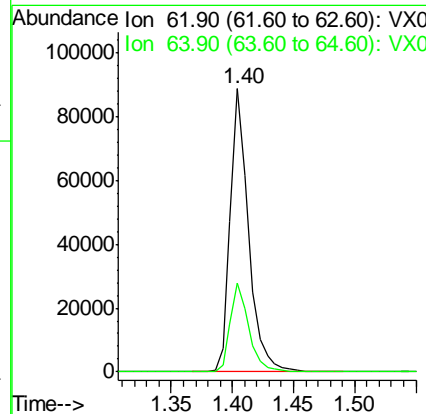
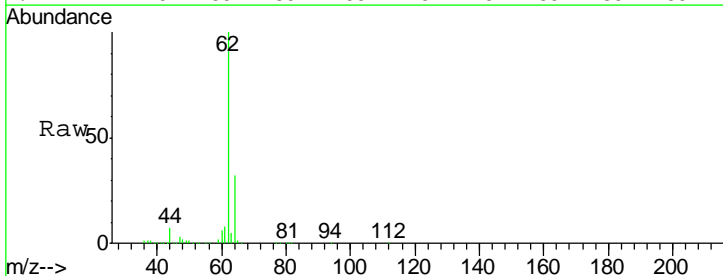
Instrument : MSVOA_X
 ClientSampleId : ST008MW157-180508

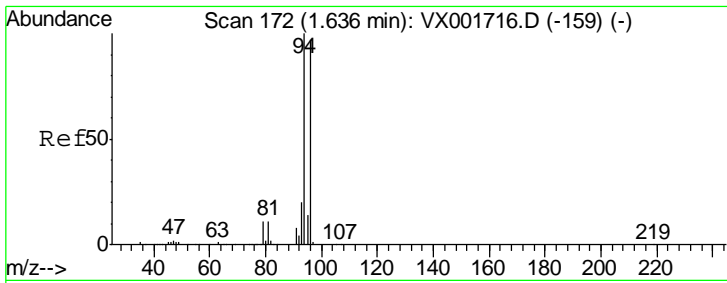
Tgt Ion: 168 Resp: 279040
 Ion Ratio Lower Upper
 168 100
 99 45.7 35.0 52.4



#4
 Vinyl Chloride
 Concen: 28.16 ug/l
 RT: 1.40 min Scan# 134
 Delta R.T. 0.00 min
 Lab File: VX001795.D
 Acq: 17 May 2018 17:20

Tgt Ion: 62 Resp: 92102
 Ion Ratio Lower Upper
 62 100
 64 31.5 25.6 38.4

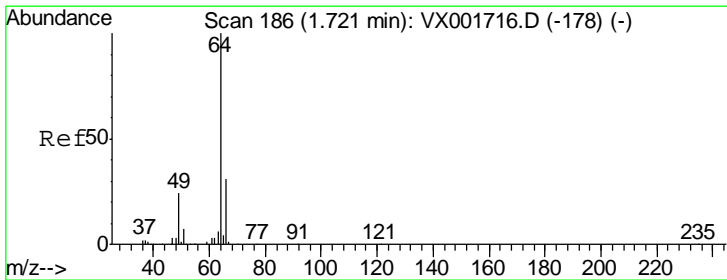
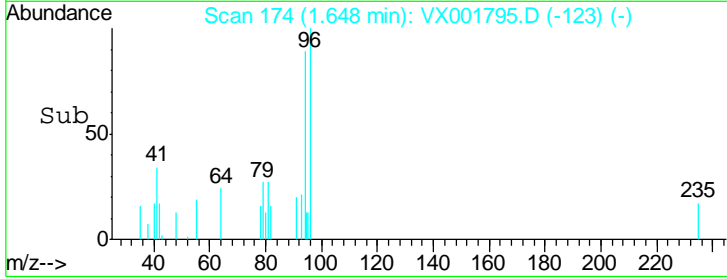
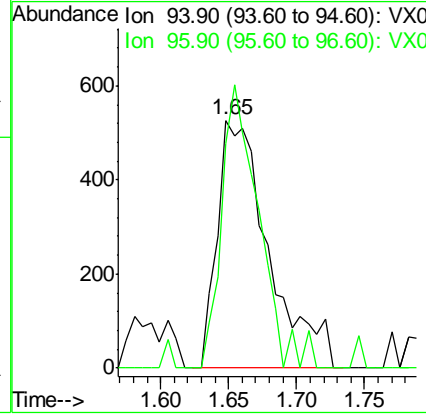
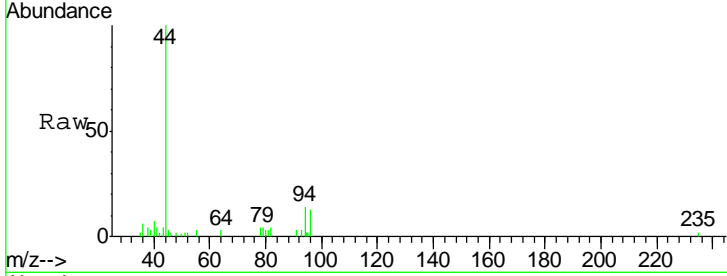




#5
 Bromomethane
 Concen: Below Cal
 RT: 1.65 min Scan# 174
 Delta R.T. 0.01 min
 Lab File: VX001795.D
 Acq: 17 May 2018 17:20

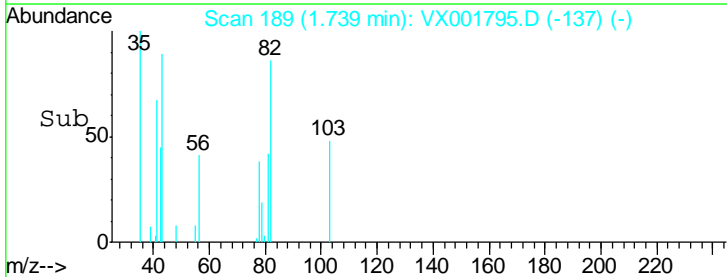
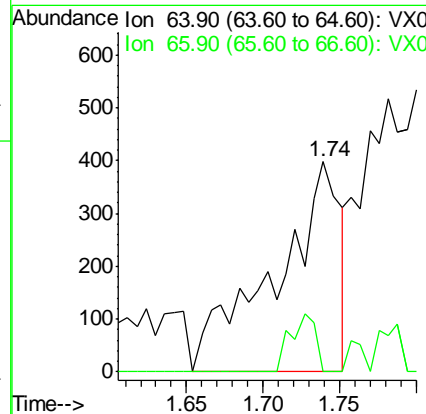
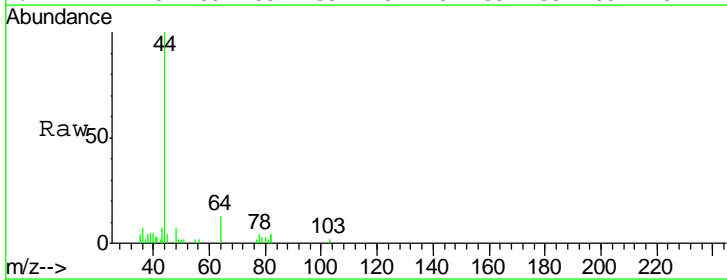
Instrument :
 MSVOA_X
ClientSampled :
 ST008MW157-180508

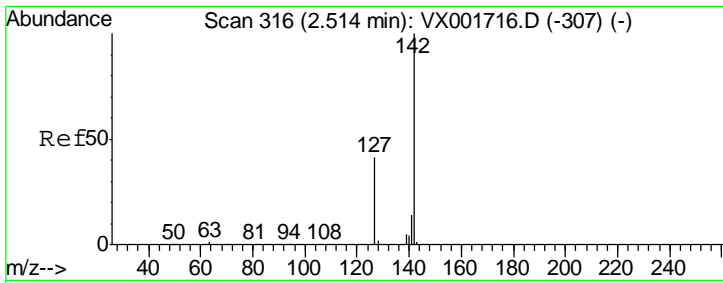
Tgt Ion: 94 Resp: 1379
 Ion Ratio Lower Upper
 94 100
 96 90.5 77.4 116.0



#6
 Chloroethane
 Concen: 0.57 ug/l
 RT: 1.74 min Scan# 189
 Delta R.T. 0.02 min
 Lab File: VX001795.D
 Acq: 17 May 2018 17:20

Tgt Ion: 64 Resp: 1174
 Ion Ratio Lower Upper
 64 100
 66 0.0 25.2 37.8#

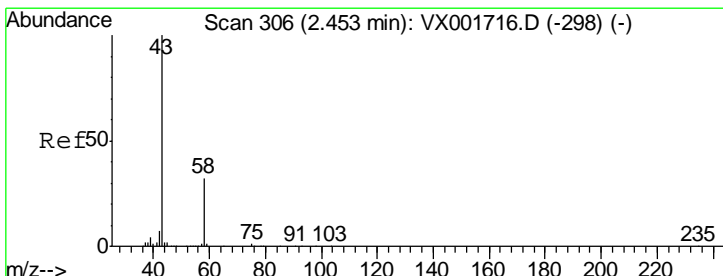
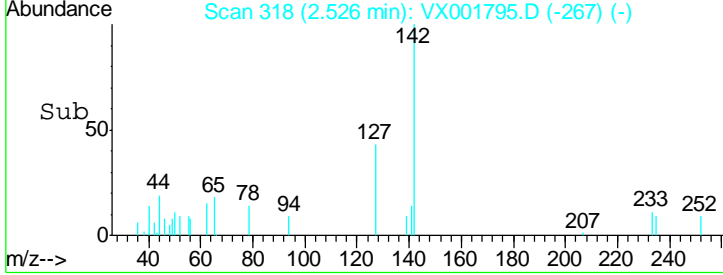
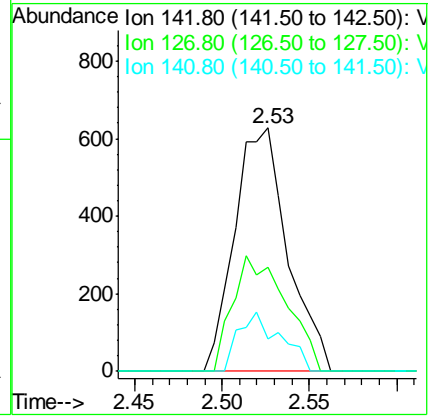
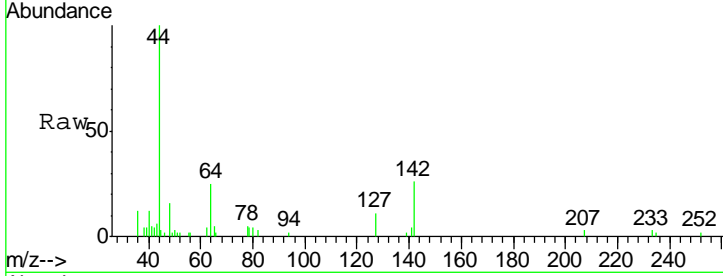




#10
Methyl Iodide
Concen: 0.50 ug/l
RT: 2.53 min Scan# 318
Delta R.T. 0.01 min
Lab File: VX001795.D
Acq: 17 May 2018 17:20

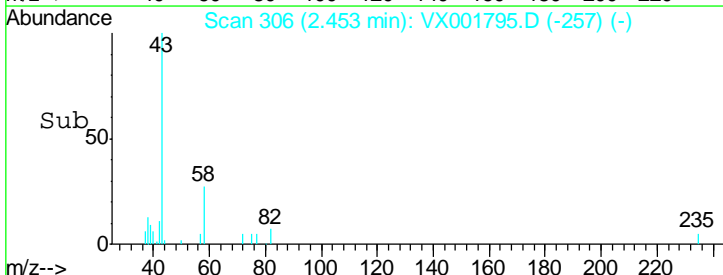
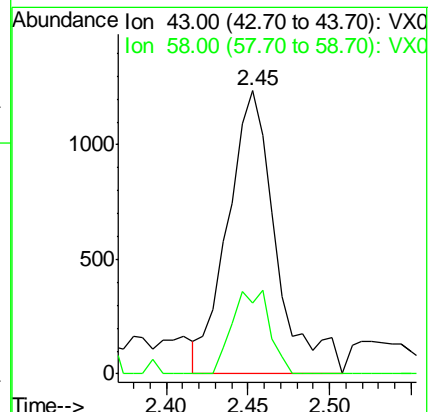
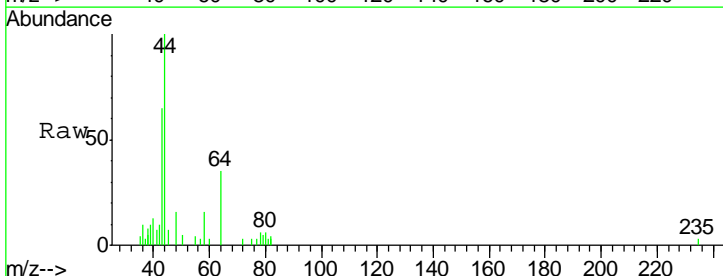
Instrument : MSVOA_X
ClientSampleId : ST008MW157-180508

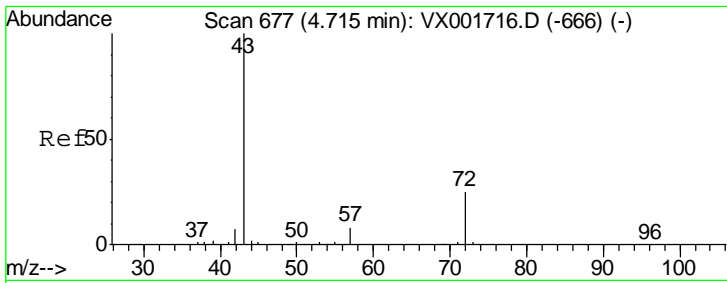
Tgt Ion	Resp	Lower	Upper
142	1324		
127	47.4	32.5	48.7
141	19.0	11.4	17.0



#16
Acetone
Concen: 1.73 ug/l
RT: 2.45 min Scan# 306
Delta R.T. 0.00 min
Lab File: VX001795.D
Acq: 17 May 2018 17:20

Tgt Ion	Resp	Lower	Upper
43	2536		
58	24.8	25.3	37.9

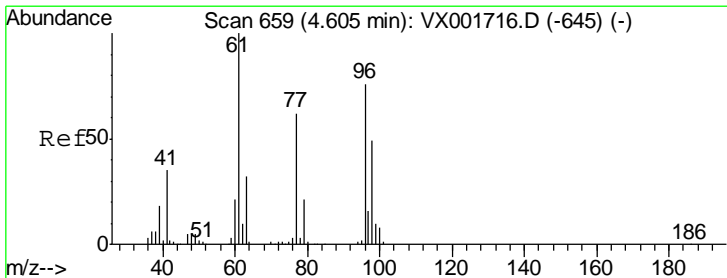
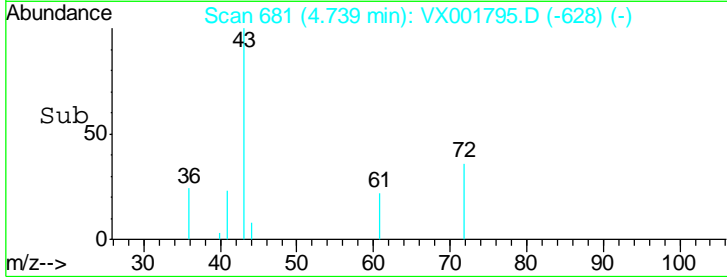
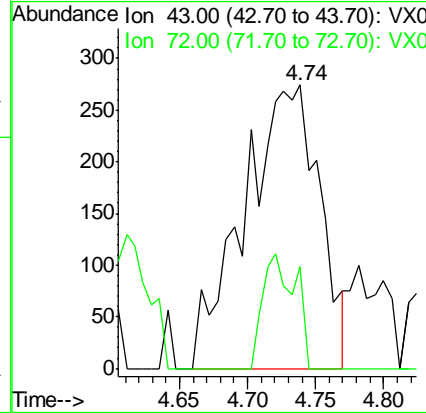
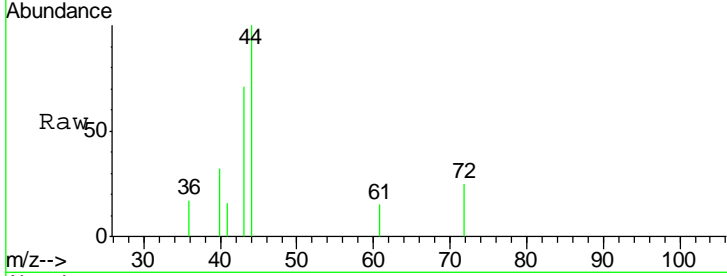




#25
 2-Butanone
 Concen: 0.47 ug/l
 RT: 4.74 min Scan# 681
 Delta R.T. 0.02 min
 Lab File: VX001795.D
 Acq: 17 May 2018 17:20

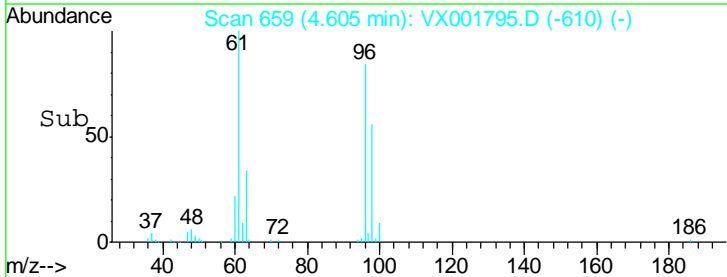
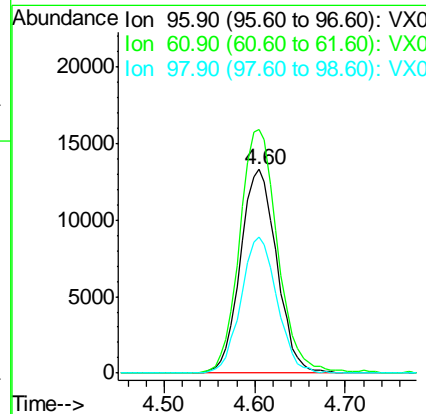
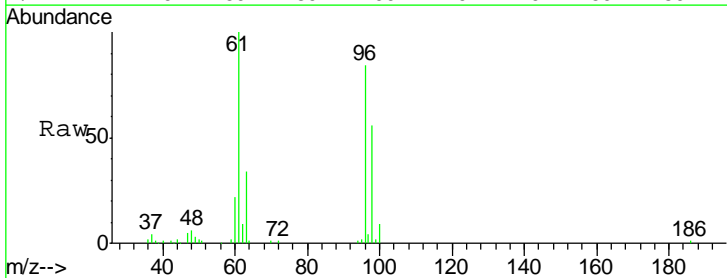
Instrument :
 MSVOA_X
 ClientSampled :
 ST008MW157-180508

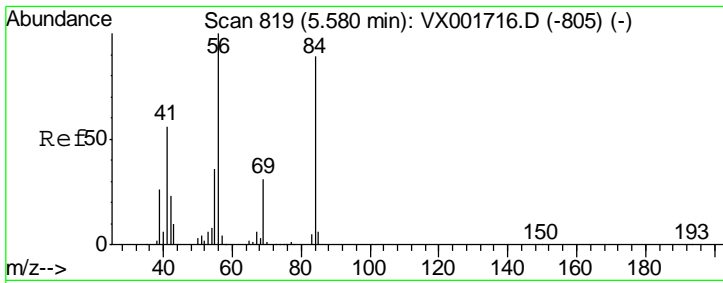
Tgt Ion: 43 Resp: 1062
 Ion Ratio Lower Upper
 43 100
 72 35.8 19.8 29.6#



#27
 cis-1,2-Dichloroethene
 Concen: 10.71 ug/l
 RT: 4.60 min Scan# 659
 Delta R.T. 0.00 min
 Lab File: VX001795.D
 Acq: 17 May 2018 17:20

Tgt Ion: 96 Resp: 37029
 Ion Ratio Lower Upper
 96 100
 61 125.4 0.0 280.4
 98 66.4 0.0 128.4

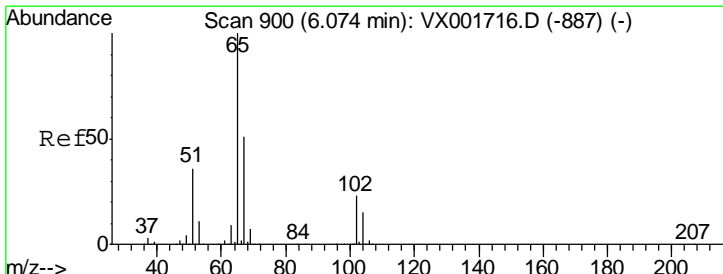
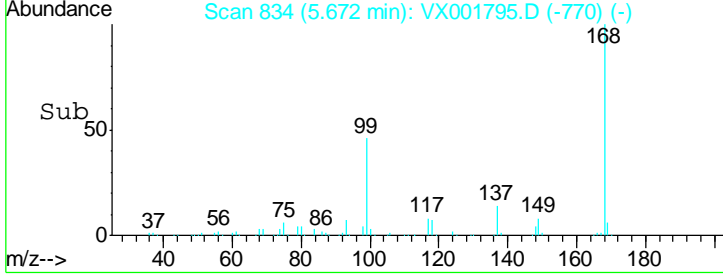
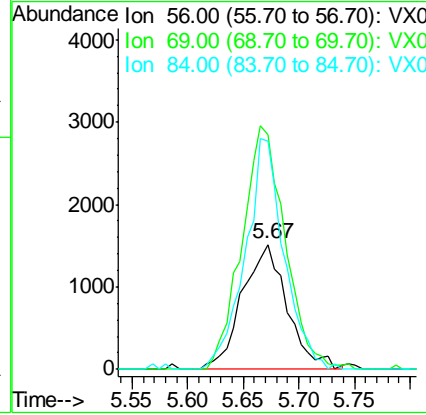
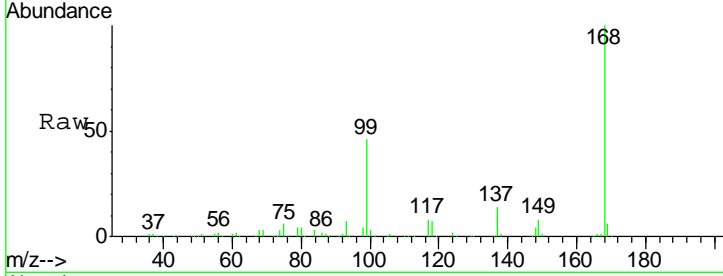




#31
 Cyclohexane
 Concen: 0.91 ug/l
 RT: 5.67 min Scan# 834
 Delta R.T. 0.09 min
 Lab File: VX001795.D
 Acq: 17 May 2018 17:20

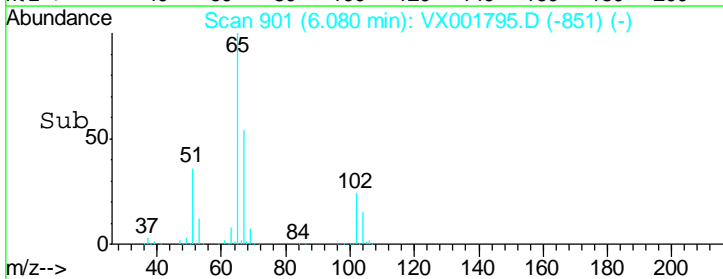
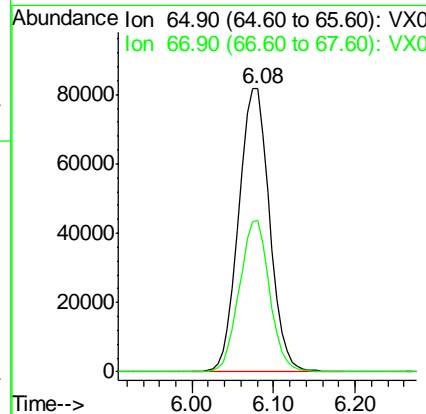
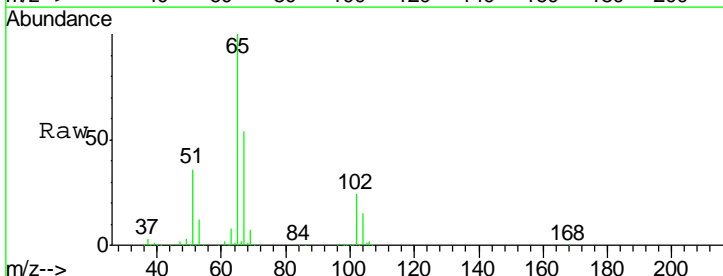
Instrument : MSVOA_X
 ClientSampleId : ST008MW157-180508

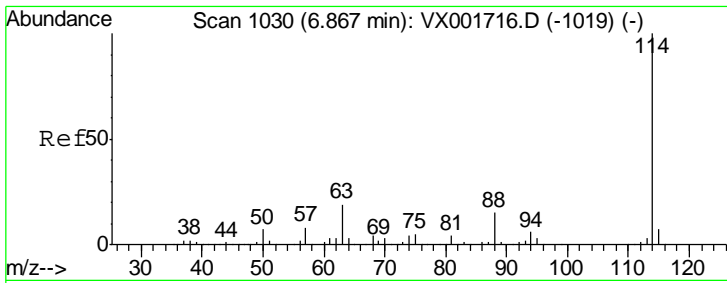
Tgt Ion	Resp	Lower	Upper
56	100		
69	188.4	25.0	37.6#
84	183.5	71.0	106.4#



#33
 1,2-Dichloroethane-d4
 Concen: 57.26 ug/l
 RT: 6.08 min Scan# 901
 Delta R.T. 0.01 min
 Lab File: VX001795.D
 Acq: 17 May 2018 17:20

Tgt Ion	Resp	Lower	Upper
65	100		
67	52.3	0.0	102.8

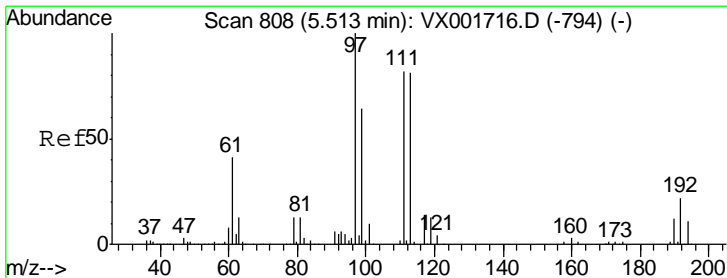
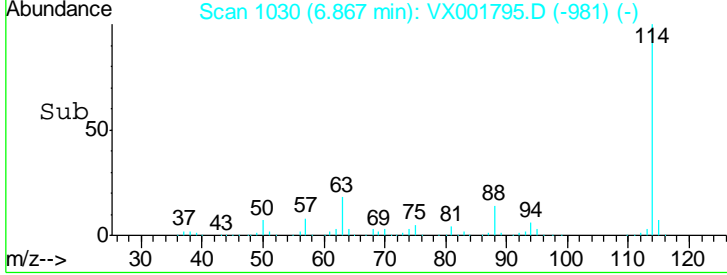
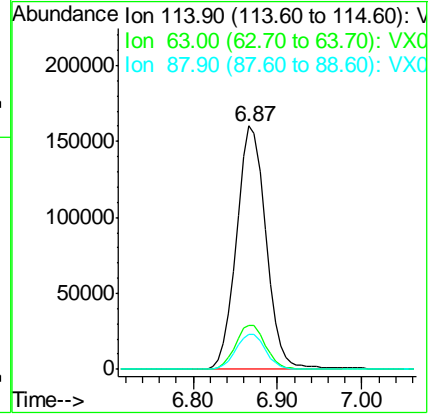
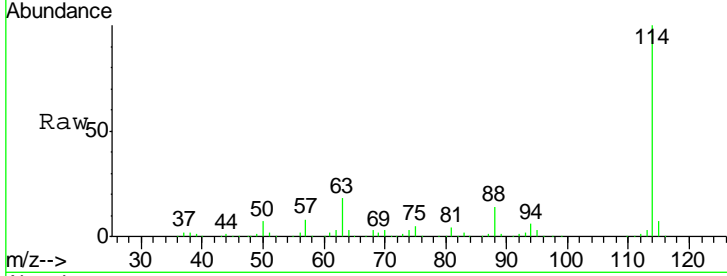




#34
 1,4-Difluorobenzene
 Concen: 50.00 ug/l
 RT: 6.87 min Scan# 1030
 Delta R.T. 0.00 min
 Lab File: VX001795.D
 Acq: 17 May 2018 17:20

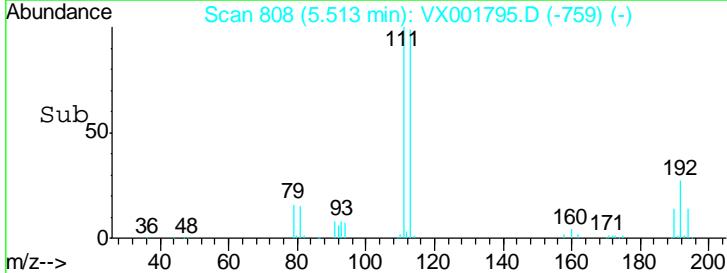
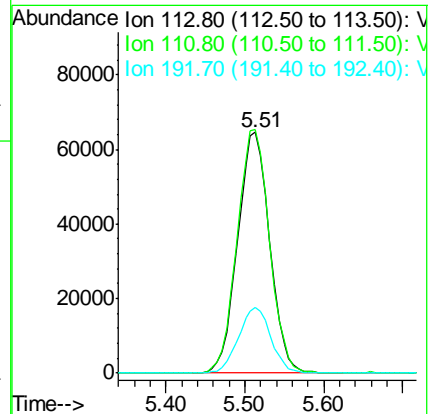
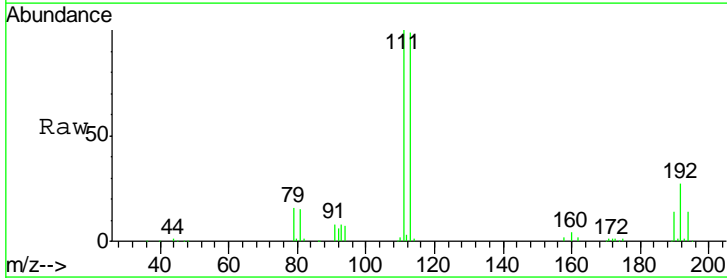
Instrument : MSVOA_X
 ClientSampleId : ST008MW157-180508

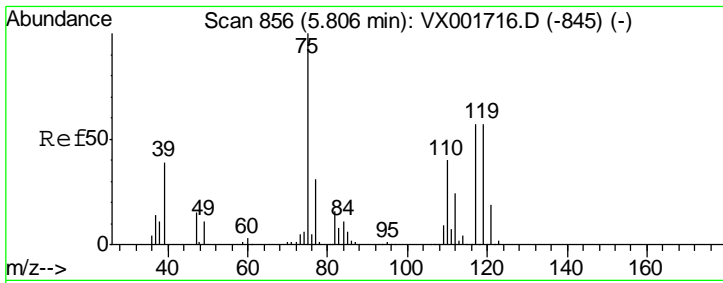
Tgt Ion	Resp	Lower	Upper
114	378673		
63	18.2	0.0	37.0
88	14.5	0.0	29.8



#35
 Dibromofluoromethane
 Concen: 57.21 ug/l
 RT: 5.51 min Scan# 808
 Delta R.T. 0.00 min
 Lab File: VX001795.D
 Acq: 17 May 2018 17:20

Tgt Ion	Resp	Lower	Upper
113	182809		
111	102.1	82.0	123.0
192	27.5	21.6	32.4

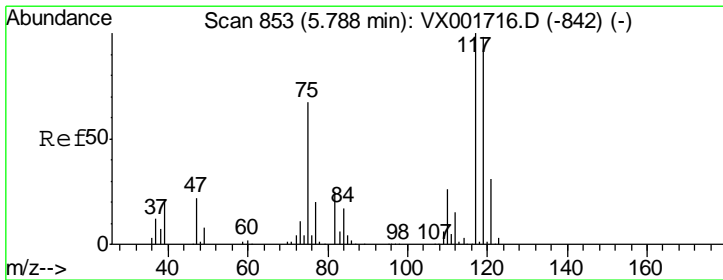
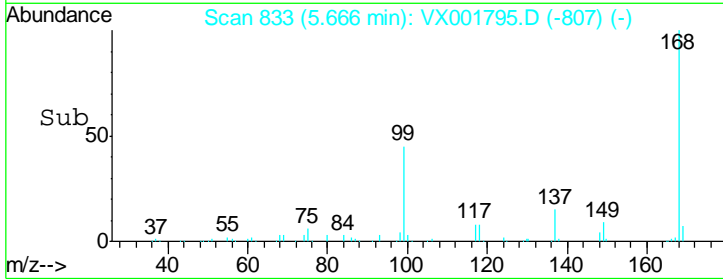
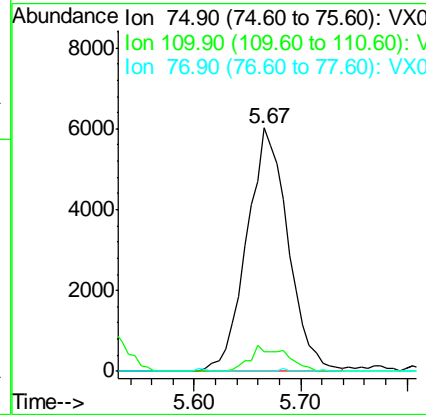
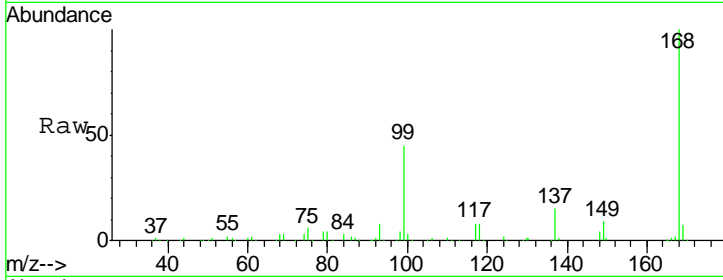




#36
 1,1-Dichloropropene
 Concen: 3.74 ug/l
 RT: 5.67 min Scan# 833
 Delta R.T. -0.14 min
 Lab File: VX001795.D
 Acq: 17 May 2018 17:20

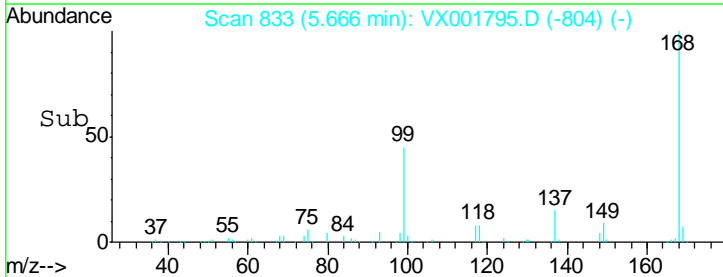
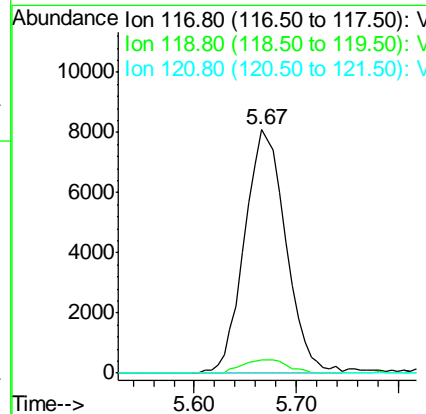
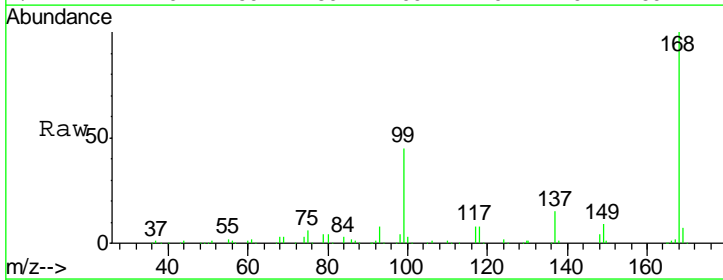
Instrument :
 MSVOA_X
 ClientSampled :
 ST008MW157-180508

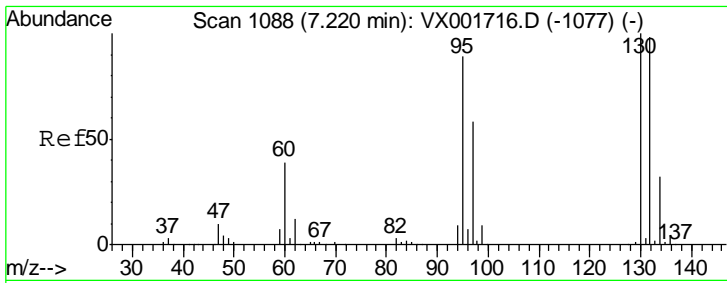
Tgt Ion	Resp	Lower	Upper
75	16315		
110	9.4	19.1	57.1#
77	0.0	24.6	37.0#



#38
 Carbon Tetrachloride
 Concen: 4.98 ug/l
 RT: 5.67 min Scan# 833
 Delta R.T. -0.12 min
 Lab File: VX001795.D
 Acq: 17 May 2018 17:20

Tgt Ion	Resp	Lower	Upper
117	22756		
119	5.6	77.6	116.4#
121	0.0	24.6	36.8#

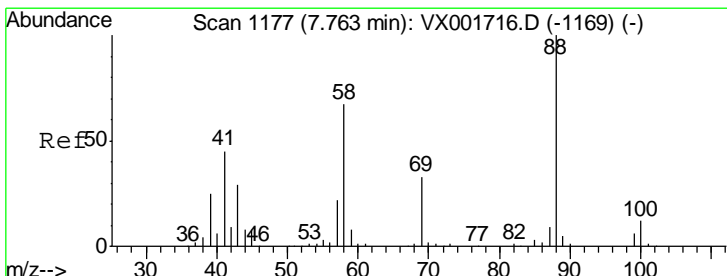
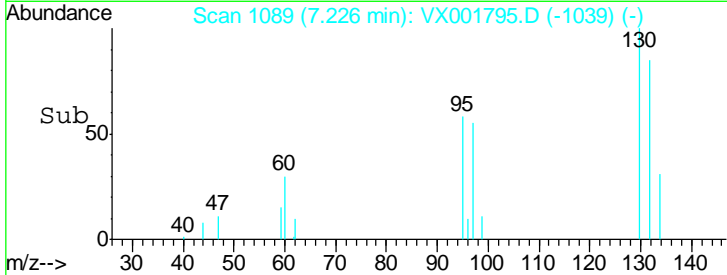
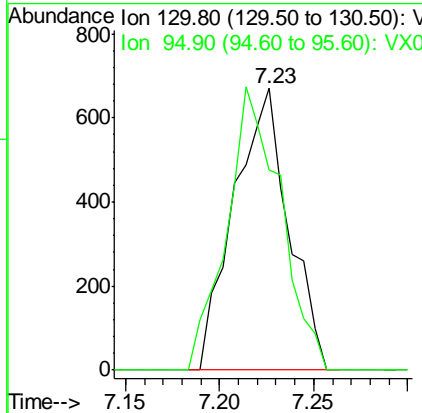
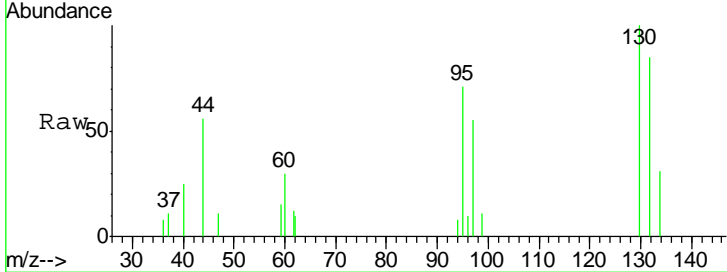




#44
 Trichloroethene
 Concen: 0.34 ug/l
 RT: 7.23 min Scan# 1089
 Delta R.T. 0.01 min
 Lab File: VX001795.D
 Acq: 17 May 2018 17:20

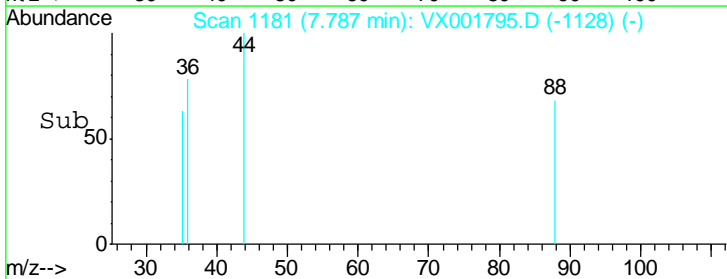
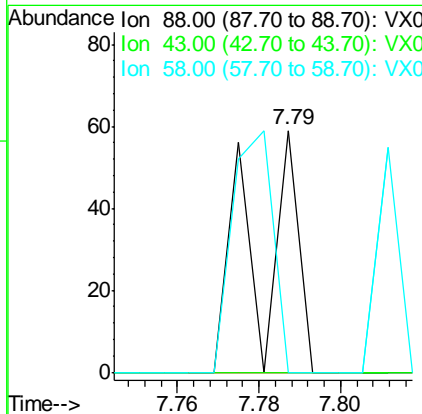
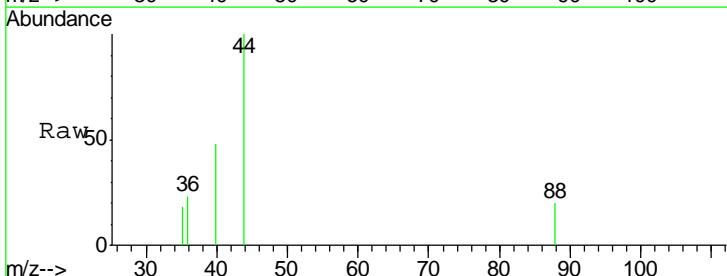
Instrument :
 MSVOA_X
ClientSampled :
 ST008MW157-180508

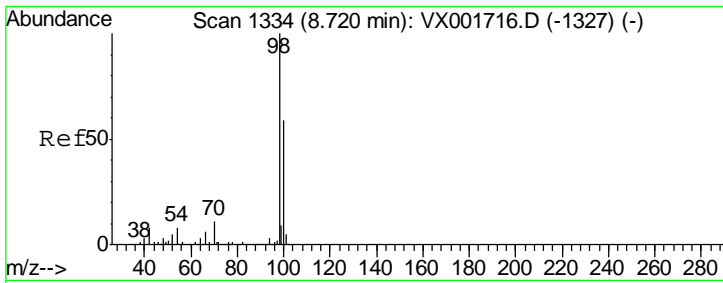
Tgt Ion	Resp	Lower	Upper
130	100		
95	70.9	0.0	177.2



#49
 1,4-Dioxane
 Concen: 0.58 ug/l
 RT: 7.79 min Scan# 1181
 Delta R.T. 0.02 min
 Lab File: VX001795.D
 Acq: 17 May 2018 17:20

Tgt Ion	Resp	Lower	Upper
88	100		
43	0.0	27.3	40.9#
58	97.6	55.9	83.9#

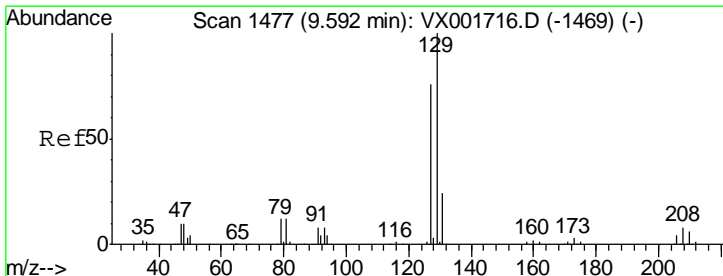
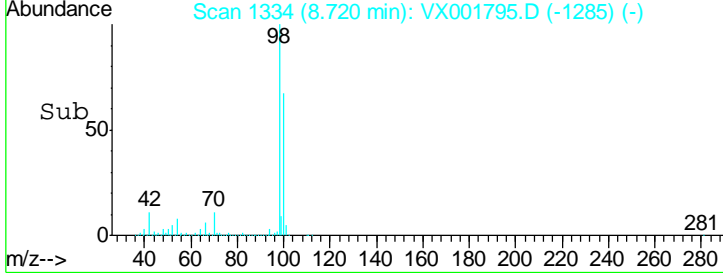
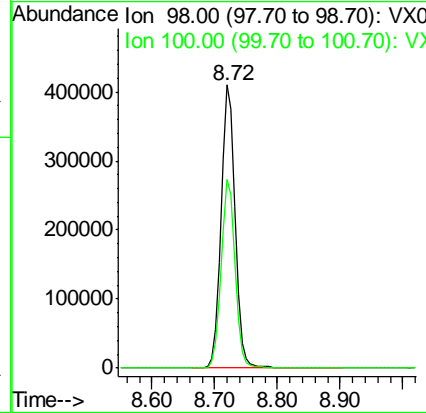
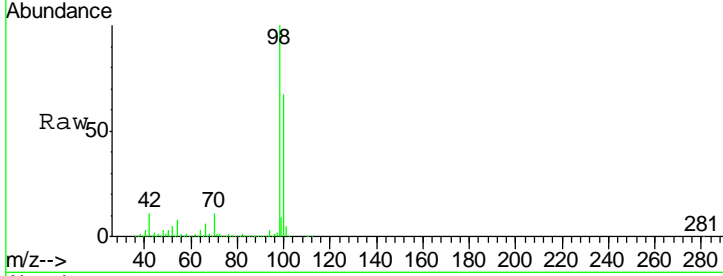




#50
 Toluene-d8
 Concen: 55.56 ug/l
 RT: 8.72 min Scan# 1334
 Delta R.T. 0.00 min
 Lab File: VX001795.D
 Acq: 17 May 2018 17:20

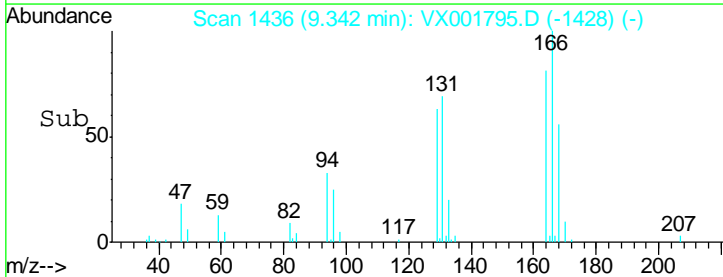
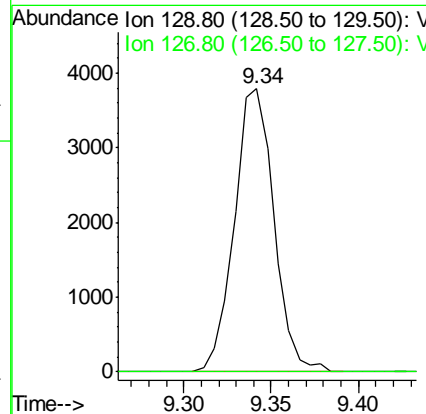
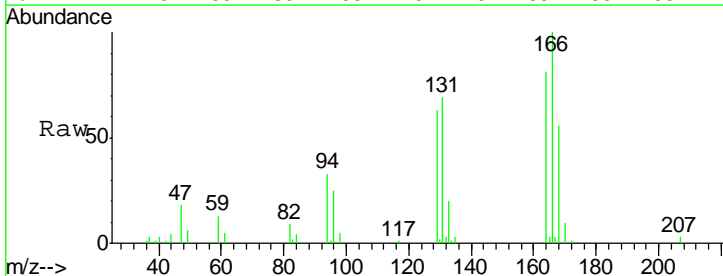
Instrument : MSVOA_X
 ClientSampleId : ST008MW157-180508

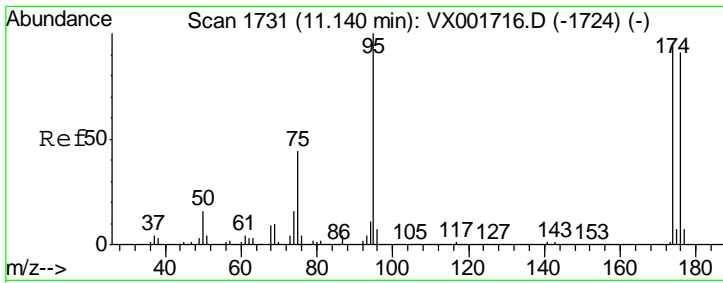
Tgt Ion: 98 Resp: 635915
 Ion Ratio Lower Upper
 98 100
 100 66.4 54.0 81.0



#60
 Dibromochloromethane
 Concen: 1.84 ug/l
 RT: 9.34 min Scan# 1436
 Delta R.T. -0.25 min
 Lab File: VX001795.D
 Acq: 17 May 2018 17:20

Tgt Ion: 129 Resp: 5954
 Ion Ratio Lower Upper
 129 100
 127 0.0 38.7 116.1#

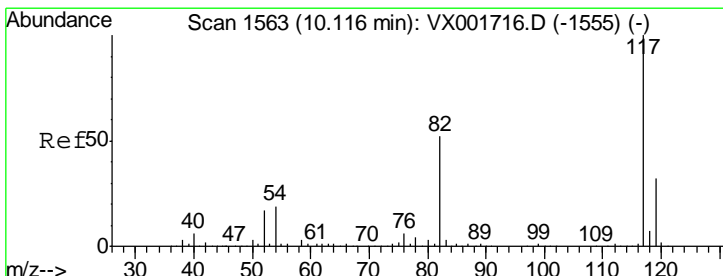
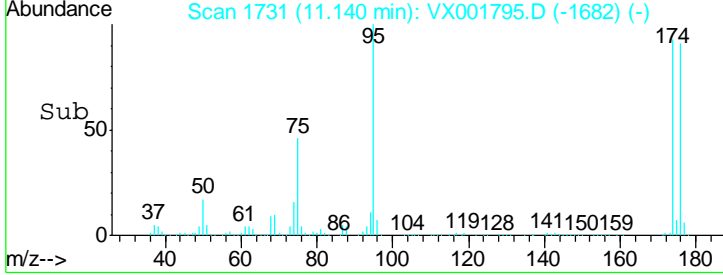
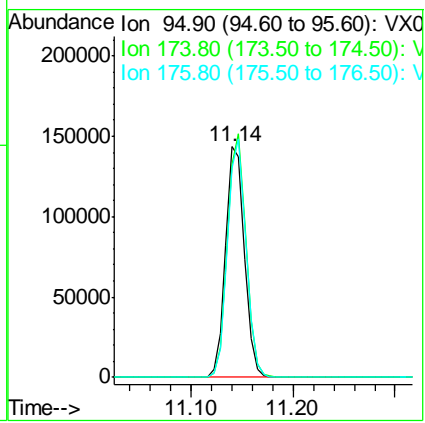
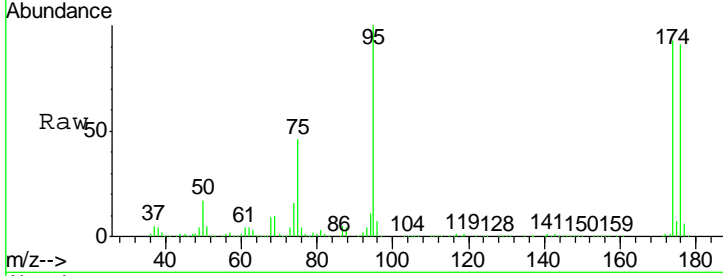




#62
 4-Bromofluorobenzene
 Concen: 44.47 ug/l
 RT: 11.14 min Scan# 1731
 Delta R.T. 0.00 min
 Lab File: VX001795.D
 Acq: 17 May 2018 17:20

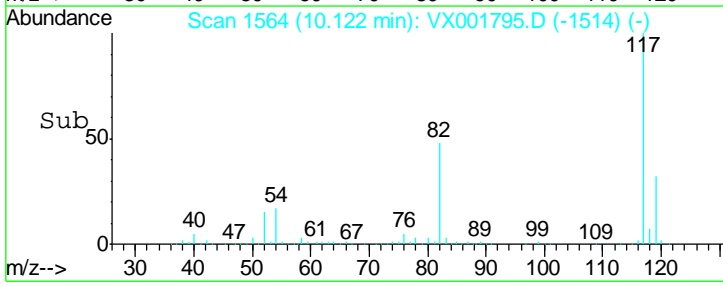
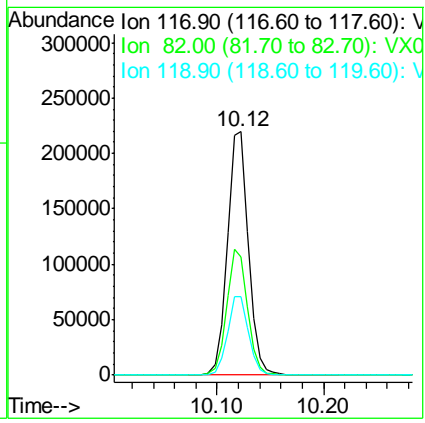
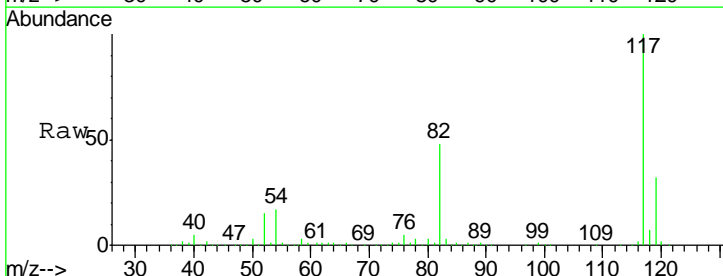
Instrument : MSVOA_X
 ClientSampleId : ST008MW157-180508

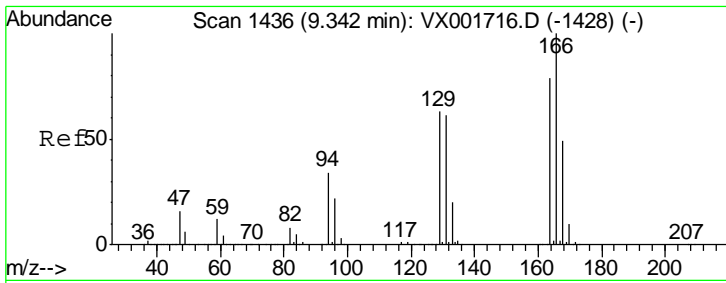
Tgt Ion	Resp	Lower	Upper
95	183257		
174	103.3	0.0	201.8
176	101.2	0.0	196.8



#63
 Chlorobenzene-d5
 Concen: 50.00 ug/l
 RT: 10.12 min Scan# 1564
 Delta R.T. 0.01 min
 Lab File: VX001795.D
 Acq: 17 May 2018 17:20

Tgt Ion	Resp	Lower	Upper
117	303484		
82	48.3	41.4	62.2
119	32.1	25.6	38.4

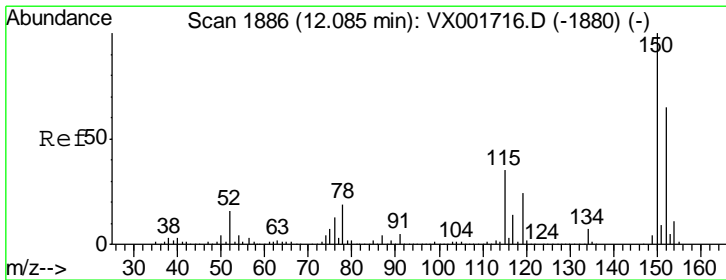
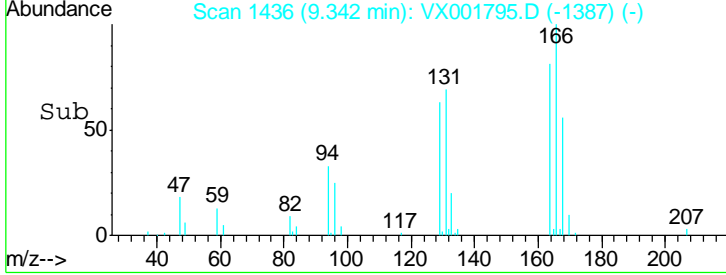
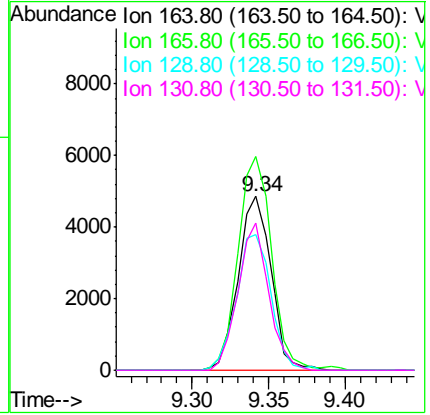
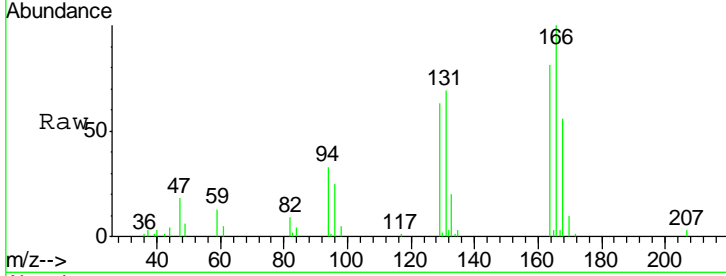




#64
 Tetrachloroethene
 Concen: 1.84 ug/l
 RT: 9.34 min Scan# 1436
 Delta R.T. 0.00 min
 Lab File: VX001795.D
 Acq: 17 May 2018 17:20

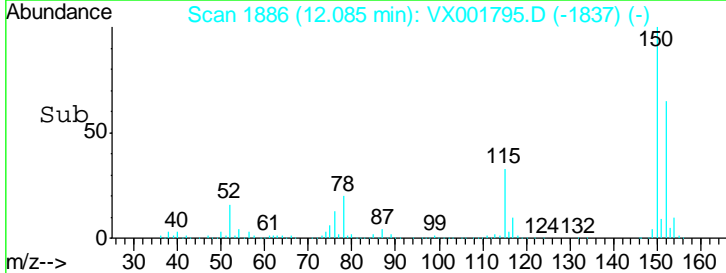
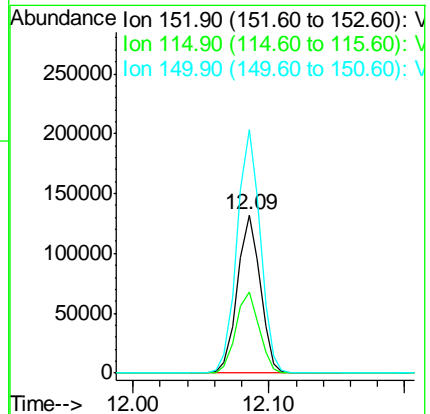
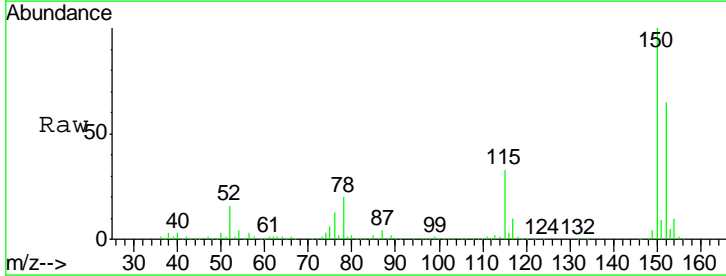
Instrument : MSVOA_X
 ClientSampleId : ST008MW157-180508

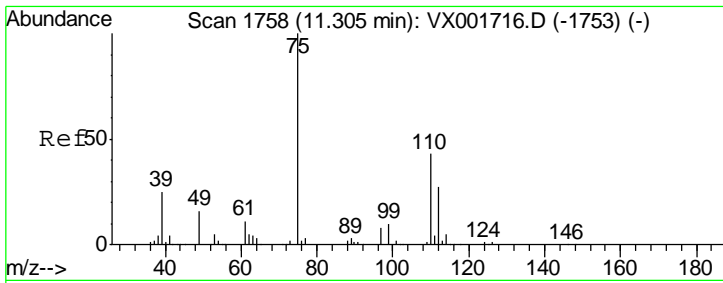
Tgt Ion	Resp	Lower	Upper
164	100		
166	122.7	101.8	152.8
129	77.9	63.8	95.6
131	84.2	62.2	93.2



#72
 1,4-Dichlorobenzene-d4
 Concen: 50.00 ug/l
 RT: 12.09 min Scan# 1886
 Delta R.T. 0.00 min
 Lab File: VX001795.D
 Acq: 17 May 2018 17:20

Tgt Ion	Resp	Lower	Upper
152	100		
115	52.3	37.4	112.2
150	156.6	0.0	344.8

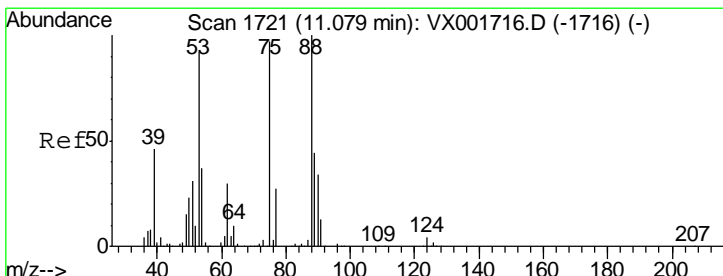
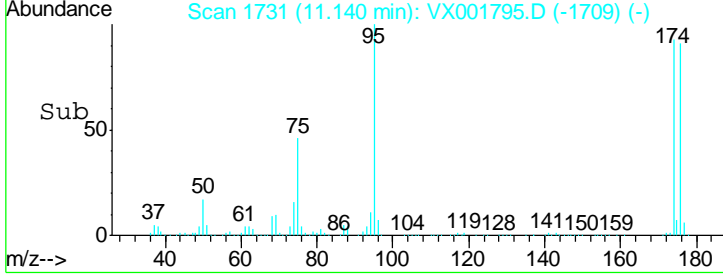
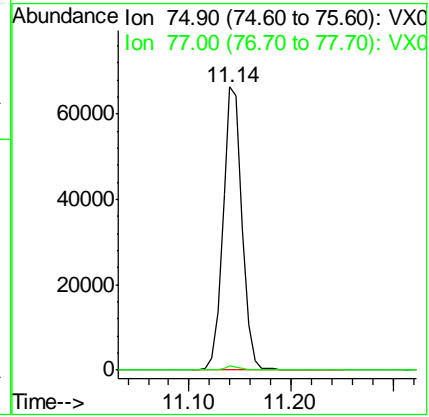
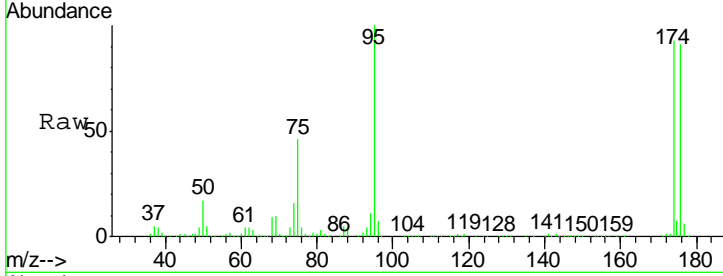




#76
 1,2,3-Trichloropropane
 Concen: 29.23 ug/l
 RT: 11.14 min Scan# 1731
 Delta R.T. -0.16 min
 Lab File: VX001795.D
 Acq: 17 May 2018 17:20

Instrument :
 MSVOA_X
ClientSampled :
 ST008MW157-180508

Tgt Ion	Resp	Lower	Upper
75	100		
77	1.3	18.9	56.7#



#81
 trans-1,4-Dichloro-2-butene
 Concen: 84.65 ug/l
 RT: 11.14 min Scan# 1731
 Delta R.T. 0.06 min
 Lab File: VX001795.D
 Acq: 17 May 2018 17:20

Tgt Ion	Resp	Lower	Upper
75	100		
53	0.1	79.4	119.2#
89	0.0	38.8	58.2#

