

Data Path : W:\HPCHEM1\MSVOA X\DATA\VX051818\
 Data File : VX001833.D
 Acq On : 18 May 2018 18:27
 Operator : JC/MD
 Sample : J2853-13
 Misc : 5.0mL/MSVOA X/WATER
 ALS Vial : 14 Sample Multiplier: 1

Instrument :
 MSVOA_X
 ClientSampleId :

Quant Time: May 19 02:25:47 2018
 Quant Method : W:\HPCHEM1\MSVOA_X\METHOD\82X051518W.M
 Quant Title : SW846 8260
 QLast Update : Tue May 15 01:36:22 2018
 Response via : Initial Calibration

Internal Standards	R.T.	QIon	Response	Conc	Units	Dev(Min)
1) Pentafluorobenzene	5.67	168	313334	50.00	ug/l	0.00
34) 1,4-Difluorobenzene	6.87	114	441559	50.00	ug/l	0.00
63) Chlorobenzene-d5	10.12	117	346747	50.00	ug/l	0.00
72) 1,4-Dichlorobenzene-d4	12.08	152	189714	50.00	ug/l	0.00

System Monitoring Compounds

33) 1,2-Dichloroethane-d4	6.07	65	222485	52.97	ug/l	0.00
Spiked Amount	50.000		Recovery	=	105.94%	
35) Dibromofluoromethane	5.51	113	189757	50.92	ug/l	0.00
Spiked Amount	50.000		Recovery	=	101.84%	
50) Toluene-d8	8.72	98	682874	51.17	ug/l	0.00
Spiked Amount	50.000		Recovery	=	102.34%	
62) 4-Bromofluorobenzene	11.14	95	196713	40.94	ug/l	0.00
Spiked Amount	50.000		Recovery	=	81.88%	

Target Compounds

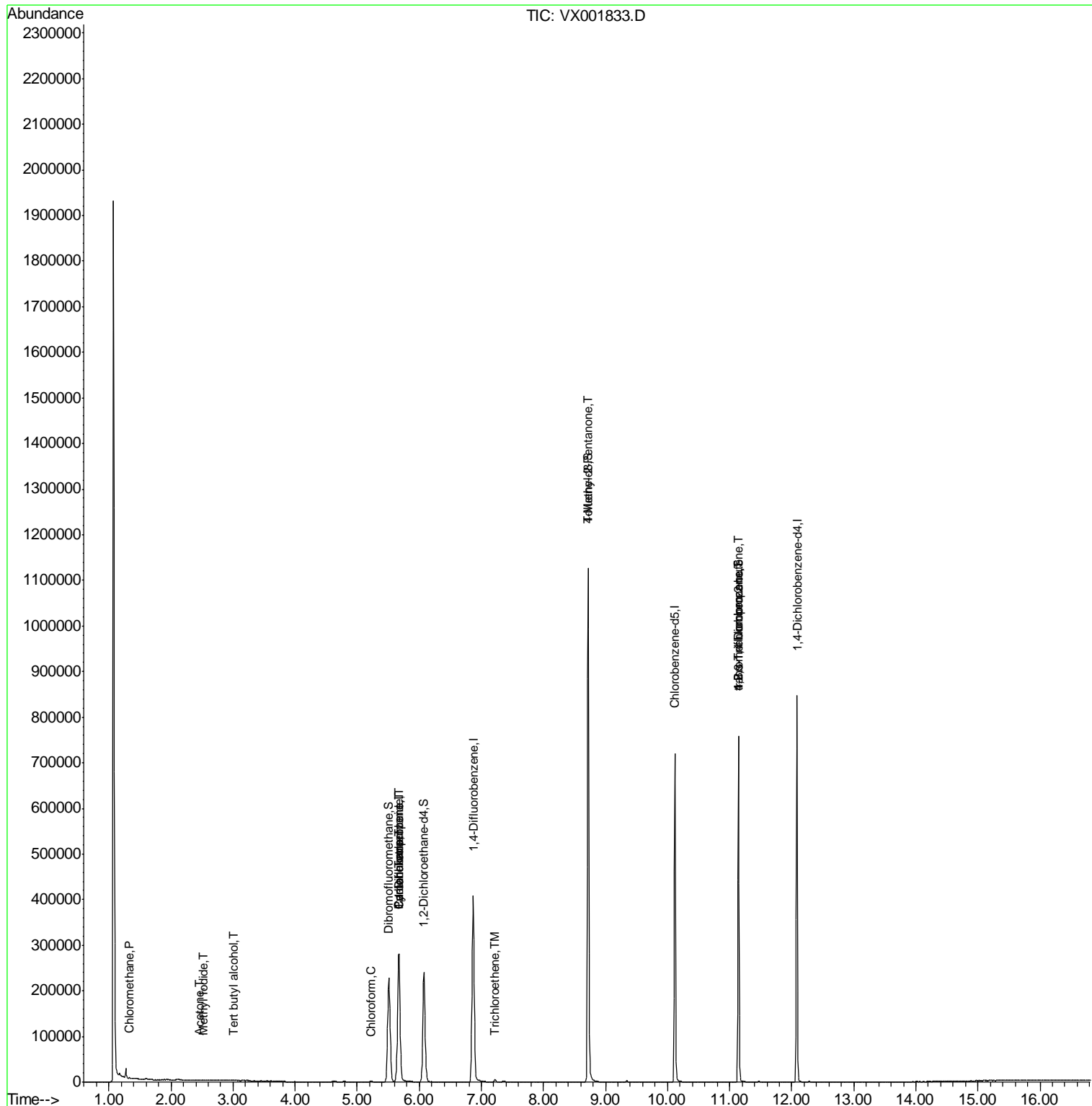
Target Compounds	R.T.	QIon	Response	Conc	Units	Qvalue
3) Chloromethane	1.32	50	889	0.26	ug/l	98
5) Bromomethane	1.61	94	219	Below Cal	#	66
10) Methyl Iodide	2.51	142	863	0.29	ug/l #	86
11) Tert butyl alcohol	3.02	59	637	0.85	ug/l #	81
16) Acetone	2.45	43	1082	0.66	ug/l	94
30) Chloroform	5.22	83	1699	0.27	ug/l	92
31) Cyclohexane	5.67	56	4684	0.89	ug/l #	1
36) 1,1-Dichloropropene	5.67	75	17632	3.47	ug/l #	48
38) Carbon Tetrachloride	5.67	117	25431	4.78	ug/l #	15
44) Trichloroethene	7.22	130	1940	0.42	ug/l	97
51) 4-Methyl-2-Pentanone	8.72	43	2629	0.50	ug/l #	1
76) 1,2,3-Trichloropropane	11.14	75	91740	25.43	ug/l #	39
81) trans-1,4-Dichloro-2-buten	11.14	75	91740	74.08	ug/l #	10

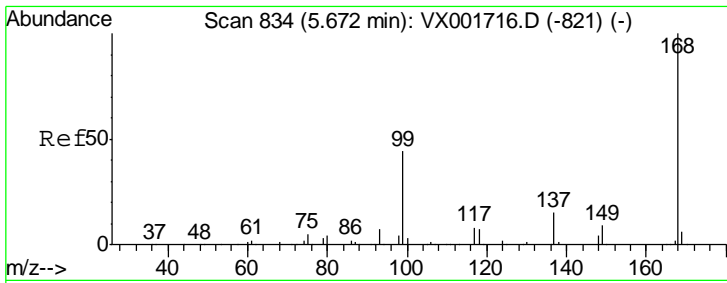
(#) = qualifier out of range (m) = manual integration (+) = signals summed

Data Path : W:\HPCHEM1\MSVOA X\DATA\VX051818\
 Data File : VX001833.D
 Acq On : 18 May 2018 18:27
 Operator : JC/MD
 Sample : J2853-13
 Misc : 5.0mL/MSVOA X/WATER
 ALS Vial : 14 Sample Multiplier: 1

Instrument :
 MSVOA_X
 Client Sampled :

Quant Time: May 19 02:25:47 2018
 Quant Method : W:\HPCHEM1\MSVOA_X\METHOD\82X051518W.M
 Quant Title : SW846 8260
 QLast Update : Tue May 15 01:36:22 2018
 Response via : Initial Calibration

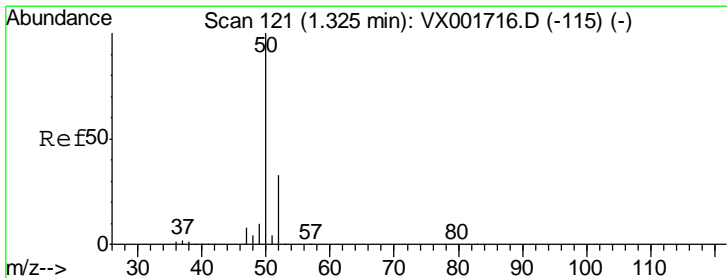
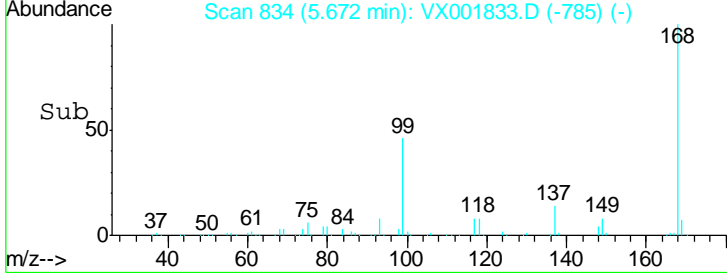
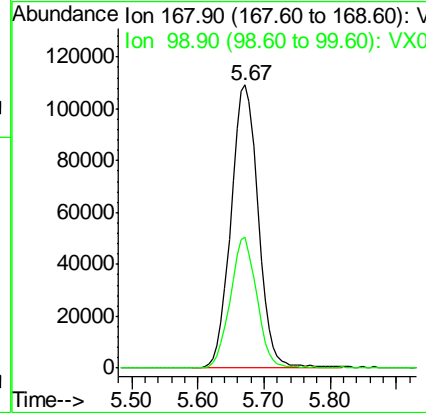
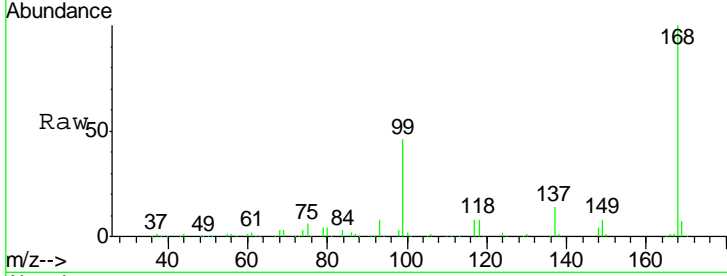




#1
 Pentafluorobenzene
 Concen: 50.00 ug/l
 RT: 5.67 min Scan# 834
 Delta R.T. -0.00 min
 Lab File: VX001833.D
 Acq: 18 May 2018 18:27

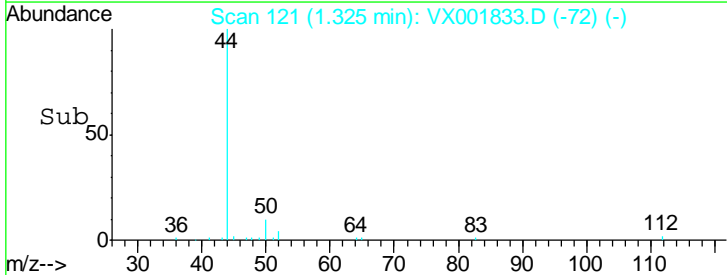
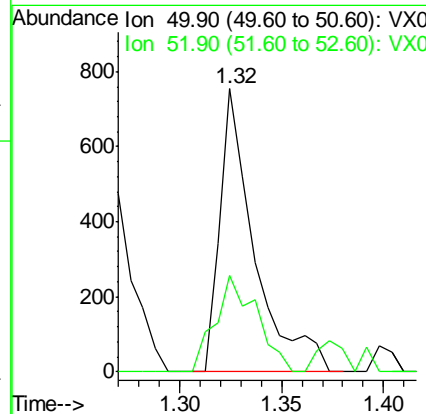
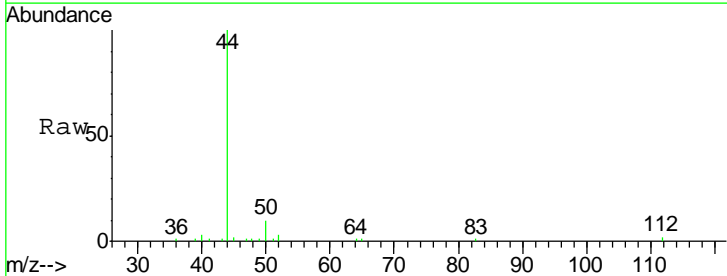
Instrument :
 MSVOA_X
 ClientSampled :

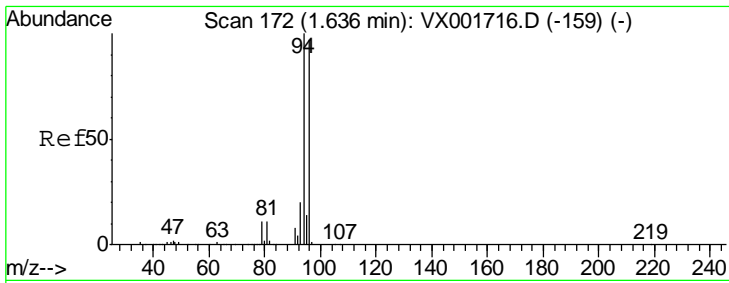
Tgt Ion	Resp	Lower	Upper
168	100		
99	46.4	35.0	52.4



#3
 Chloromethane
 Concen: 0.26 ug/l
 RT: 1.32 min Scan# 121
 Delta R.T. -0.00 min
 Lab File: VX001833.D
 Acq: 18 May 2018 18:27

Tgt Ion	Resp	Lower	Upper
50	100		
52	34.0	26.3	39.5

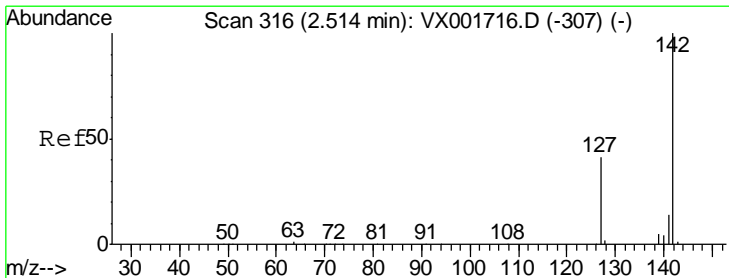
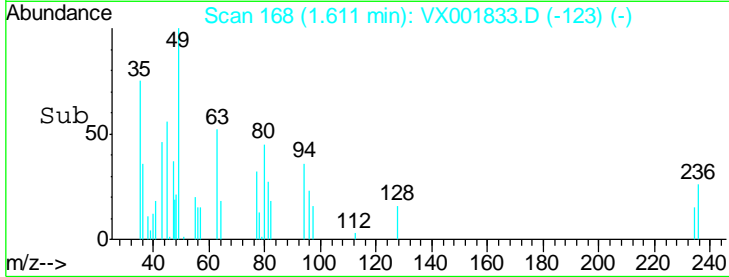
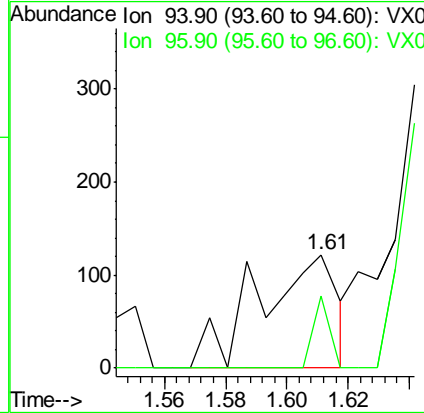
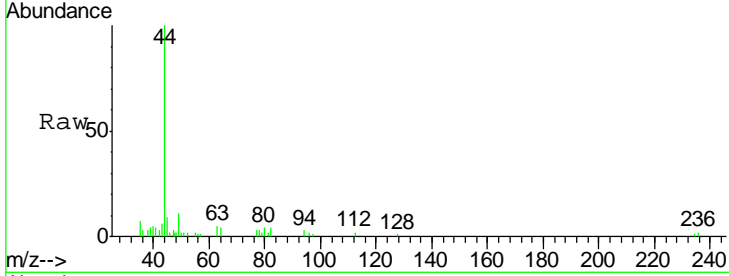




#5
 Bromomethane
 Concen: Below Cal
 RT: 1.61 min Scan# 168
 Delta R.T. -0.02 min
 Lab File: VX001833.D
 Acq: 18 May 2018 18:27

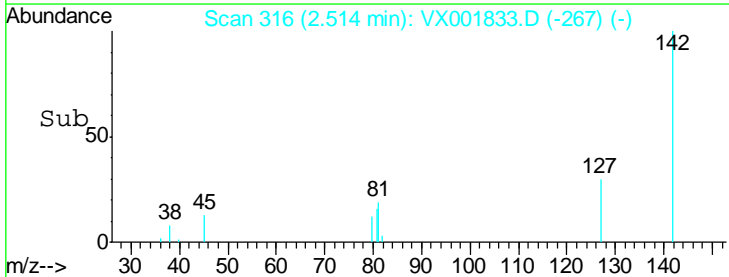
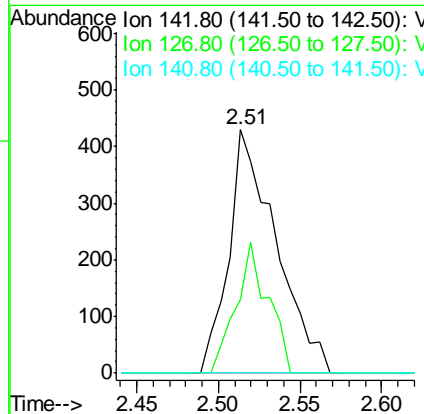
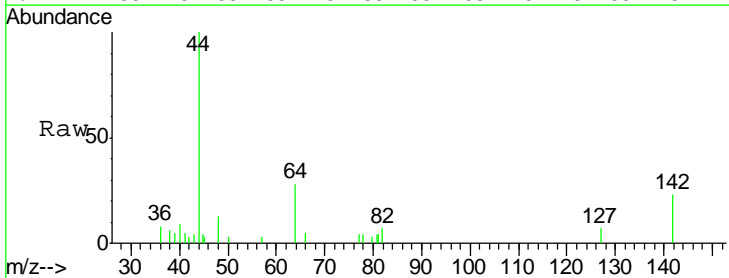
Instrument :
 MSVOA_X
 ClientSampled :

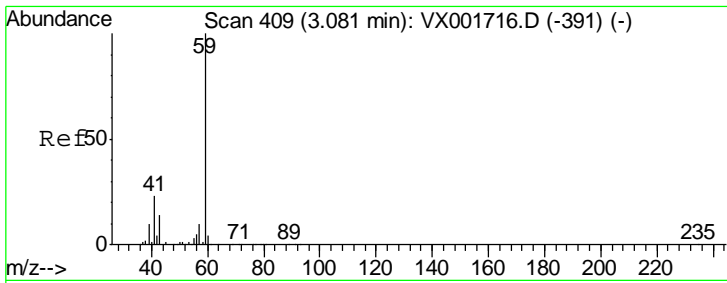
Tgt Ion: 94 Resp: 219
 Ion Ratio Lower Upper
 94 100
 96 63.1 77.4 116.0#



#10
 Methyl Iodide
 Concen: 0.29 ug/l
 RT: 2.51 min Scan# 316
 Delta R.T. -0.00 min
 Lab File: VX001833.D
 Acq: 18 May 2018 18:27

Tgt Ion: 142 Resp: 863
 Ion Ratio Lower Upper
 142 100
 127 36.6 32.5 48.7
 141 0.0 11.4 17.0#

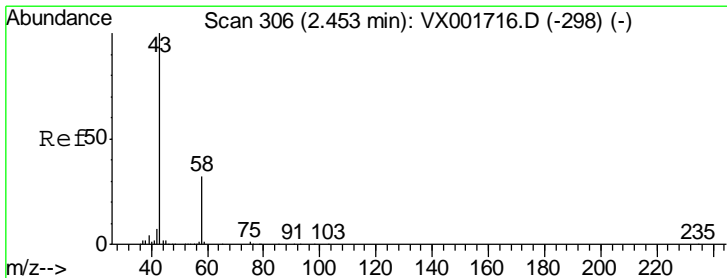
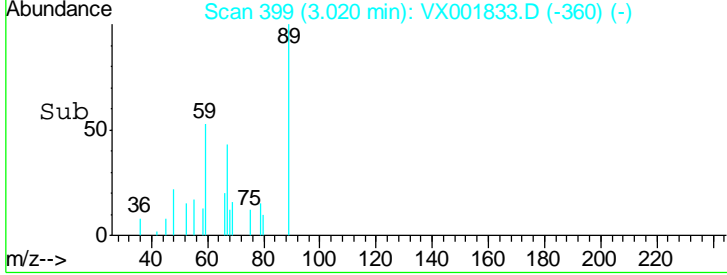
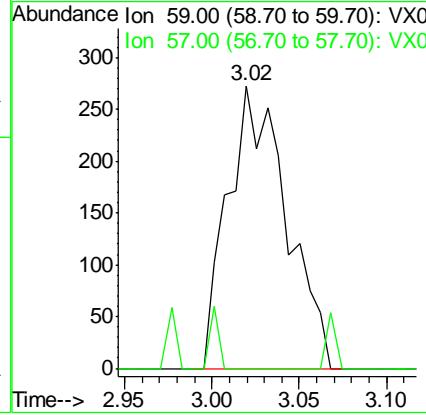
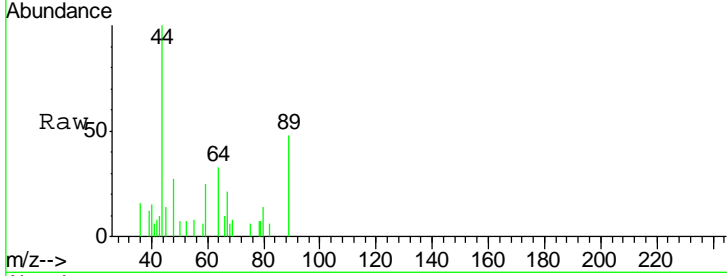




#11
 Tert butyl alcohol
 Concen: 0.85 ug/l
 RT: 3.02 min Scan# 399
 Delta R.T. -0.06 min
 Lab File: VX001833.D
 Acq: 18 May 2018 18:27

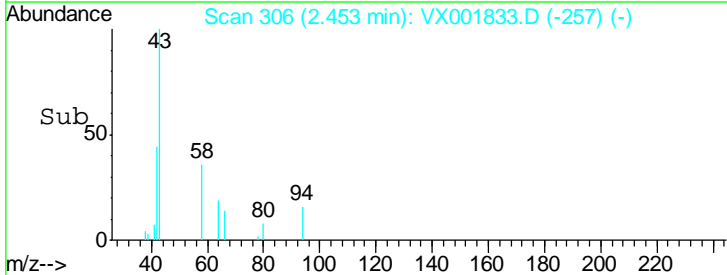
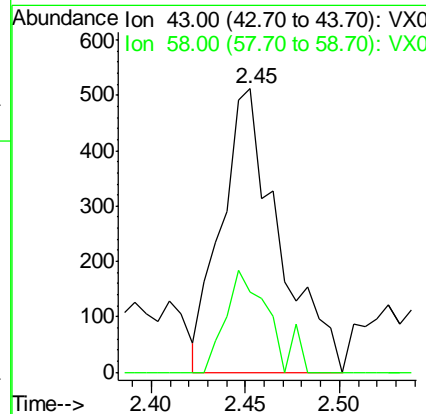
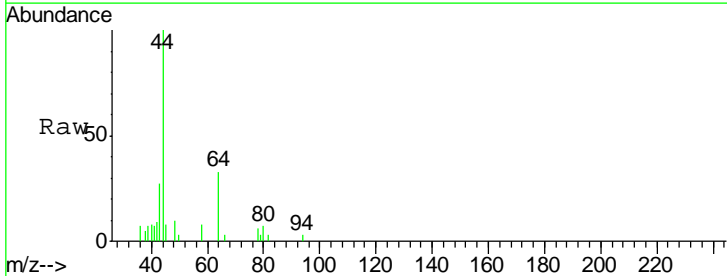
Instrument : MSVOA_X
 ClientSampled :

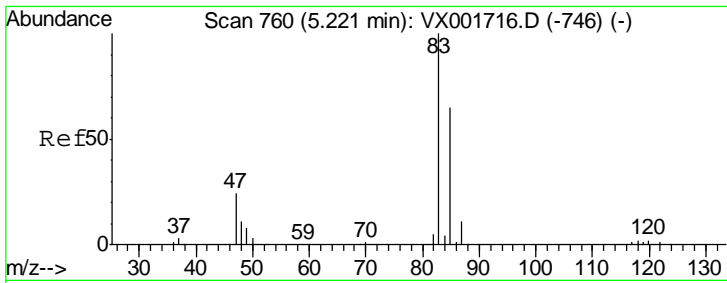
Tgt Ion	Resp	Lower	Upper
59	100		
57	3.5	8.5	12.7#



#16
 Acetone
 Concen: 0.66 ug/l
 RT: 2.45 min Scan# 306
 Delta R.T. -0.00 min
 Lab File: VX001833.D
 Acq: 18 May 2018 18:27

Tgt Ion	Resp	Lower	Upper
43	100		
58	28.3	25.3	37.9

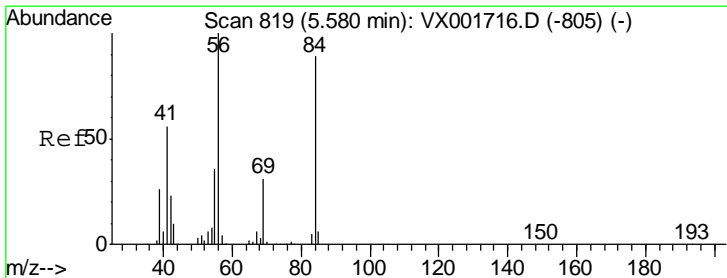
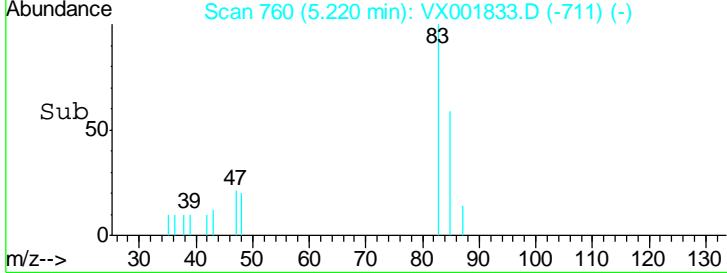
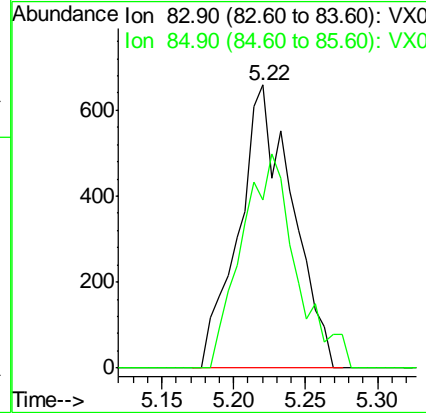
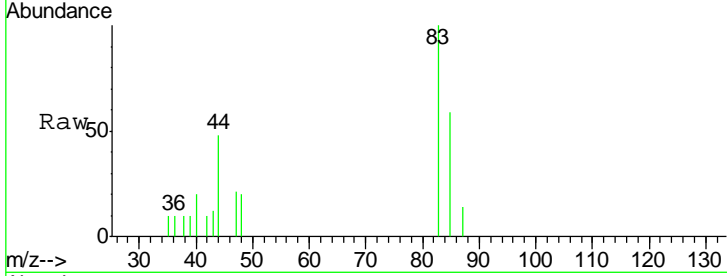




#30
 Chloroform
 Concen: 0.27 ug/l
 RT: 5.22 min Scan# 760
 Delta R.T. -0.00 min
 Lab File: VX001833.D
 Acq: 18 May 2018 18:27

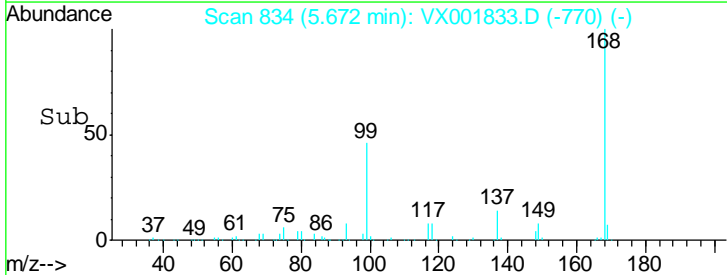
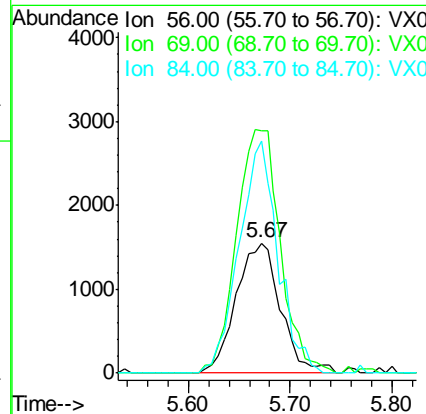
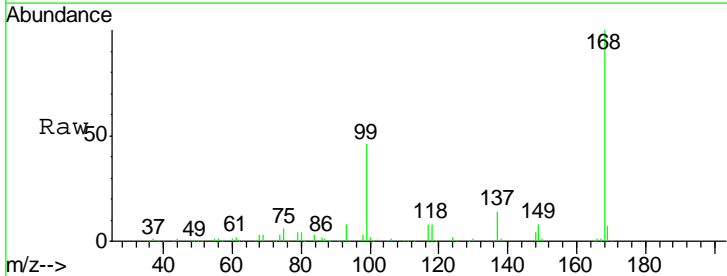
Instrument :
 MSVOA_X
 ClientSampled :

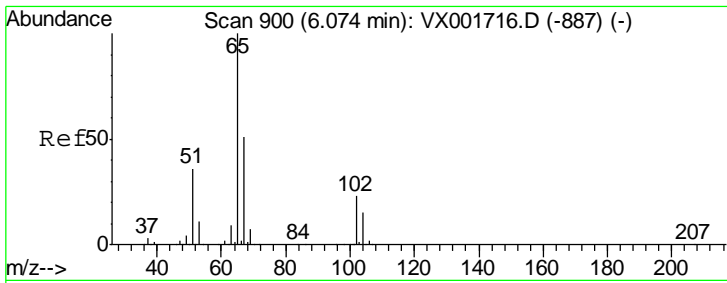
Tgt Ion	Resp	Lower	Upper
83	1699		
85	59.4	52.3	78.5



#31
 Cyclohexane
 Concen: 0.89 ug/l
 RT: 5.67 min Scan# 834
 Delta R.T. 0.09 min
 Lab File: VX001833.D
 Acq: 18 May 2018 18:27

Tgt Ion	Resp	Lower	Upper
56	4684		
69	186.7	25.0	37.6#
84	178.7	71.0	106.4#

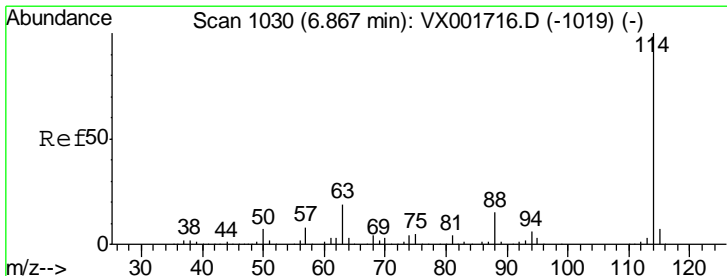
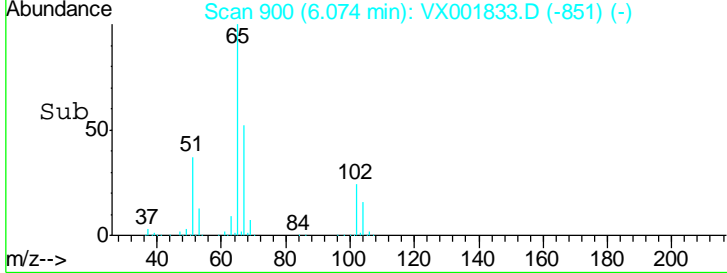
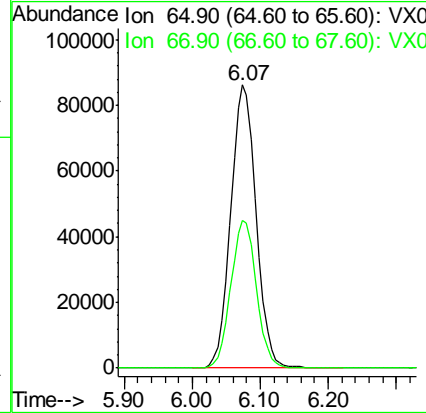
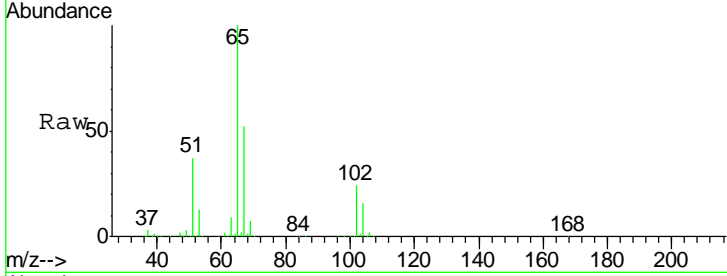




#33
 1,2-Dichloroethane-d4
 Concen: 52.97 ug/l
 RT: 6.07 min Scan# 900
 Delta R.T. -0.00 min
 Lab File: VX001833.D
 Acq: 18 May 2018 18:27

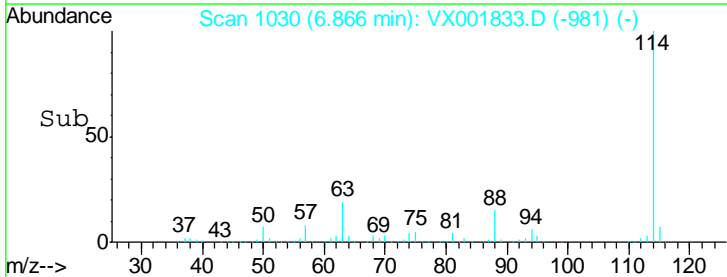
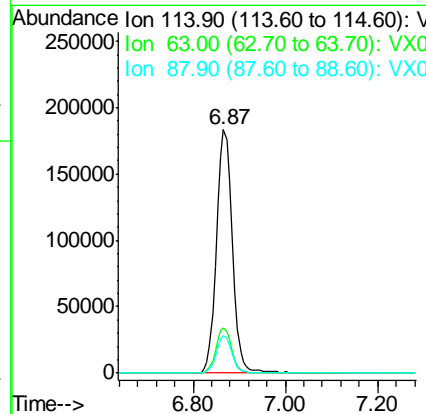
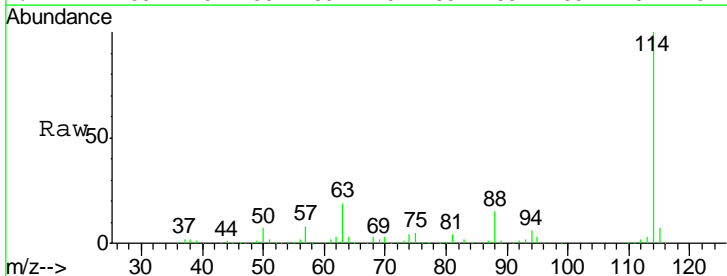
Instrument :
 MSVOA_X
 ClientSampled :

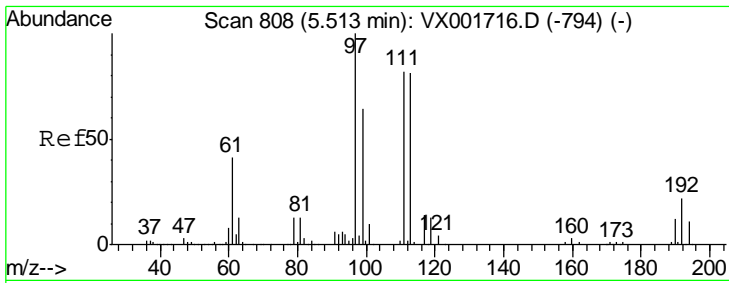
Tgt Ion	Resp	Lower	Upper
65	100		
67	52.7	0.0	102.8



#34
 1,4-Difluorobenzene
 Concen: 50.00 ug/l
 RT: 6.87 min Scan# 1030
 Delta R.T. -0.00 min
 Lab File: VX001833.D
 Acq: 18 May 2018 18:27

Tgt Ion	Resp	Lower	Upper
114	100		
63	18.7	0.0	37.0
88	15.4	0.0	29.8

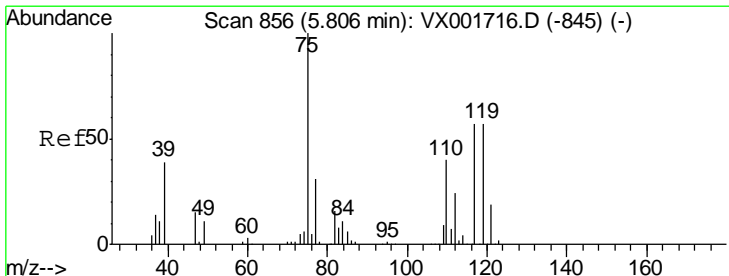
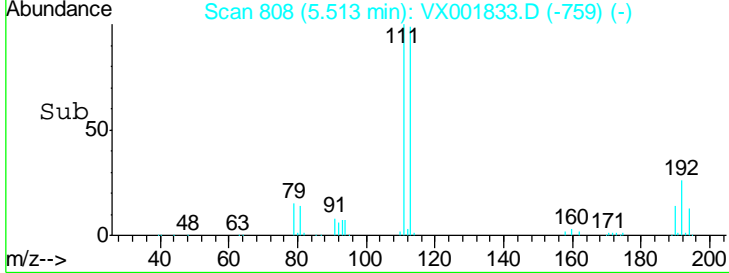
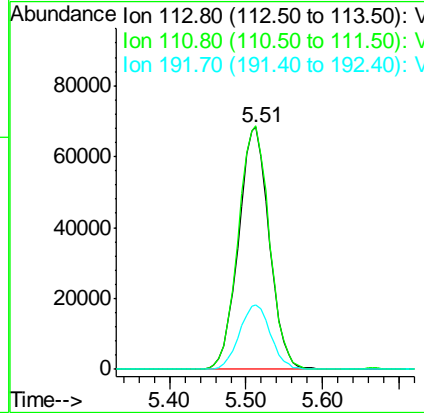
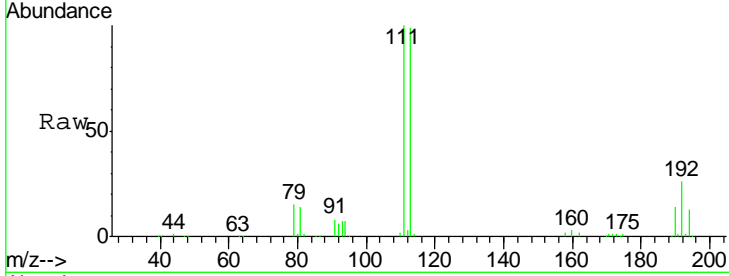




#35
 Dibromofluoromethane
 Concen: 50.92 ug/l
 RT: 5.51 min Scan# 808
 Delta R.T. -0.00 min
 Lab File: VX001833.D
 Acq: 18 May 2018 18:27

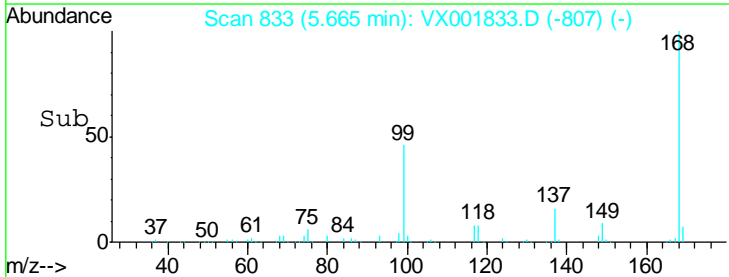
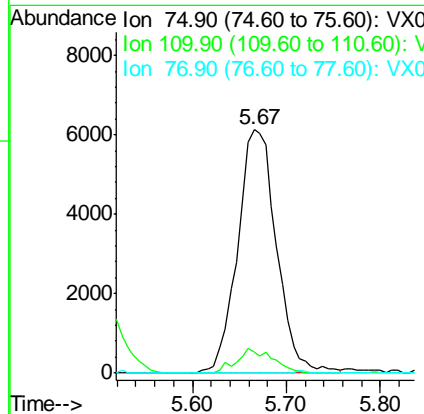
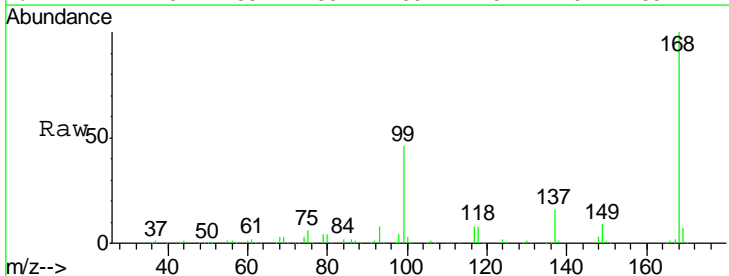
Instrument :
 MSVOA_X
 ClientSampled :

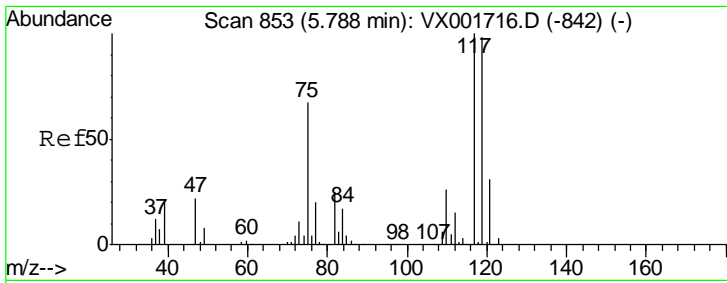
Tgt Ion	Resp	Lower	Upper
113	189757		
111	102.3	82.0	123.0
192	27.1	21.6	32.4



#36
 1,1-Dichloropropene
 Concen: 3.47 ug/l
 RT: 5.67 min Scan# 833
 Delta R.T. -0.14 min
 Lab File: VX001833.D
 Acq: 18 May 2018 18:27

Tgt Ion	Resp	Lower	Upper
75	17632		
110	9.3	19.1	57.1#
77	0.0	24.6	37.0#

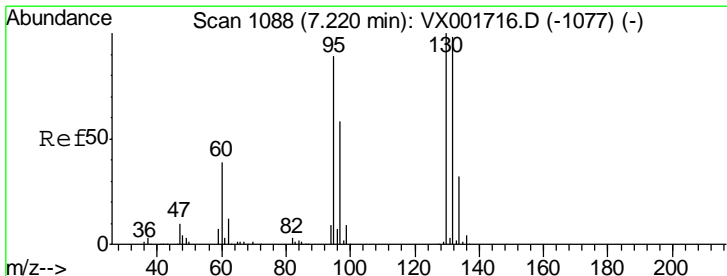
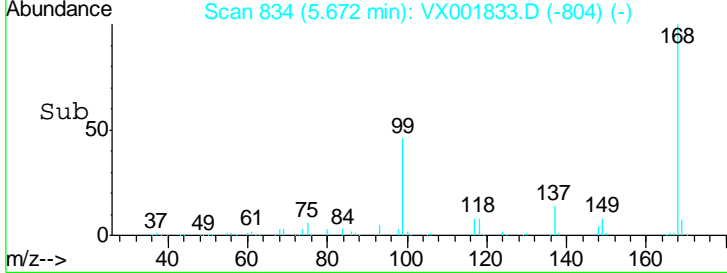
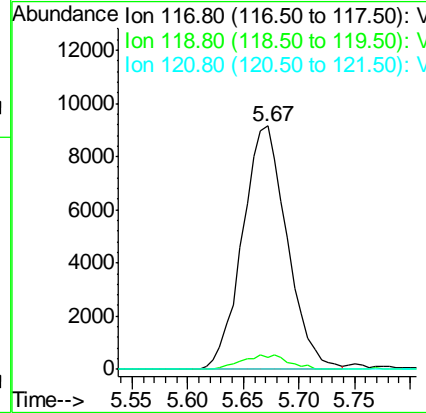
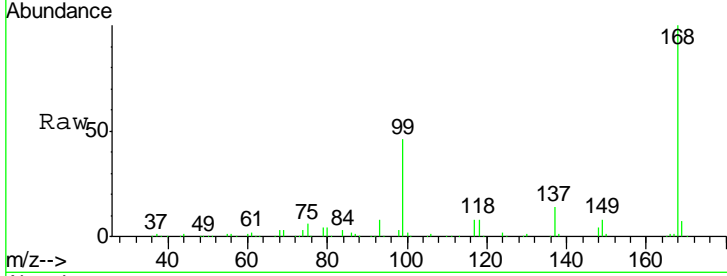




#38
 Carbon Tetrachloride
 Concen: 4.78 ug/l
 RT: 5.67 min Scan# 834
 Delta R.T. -0.12 min
 Lab File: VX001833.D
 Acq: 18 May 2018 18:27

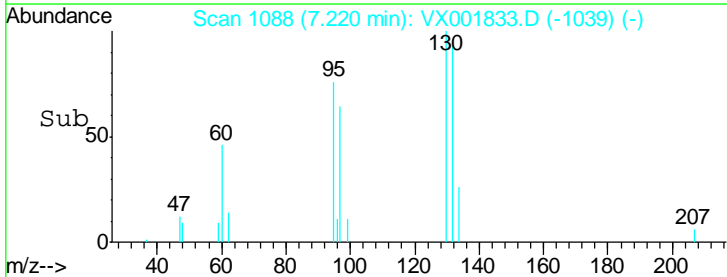
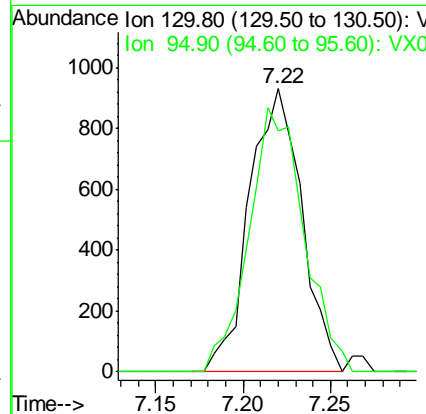
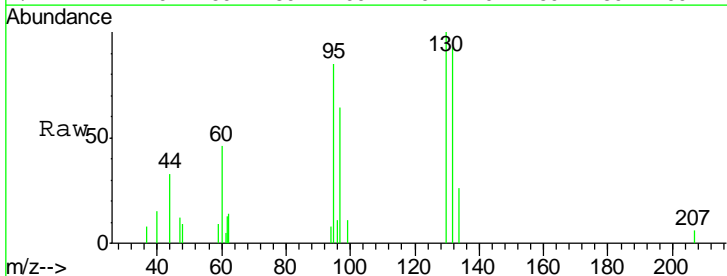
Instrument :
 MSVOA_X
 ClientSampled :

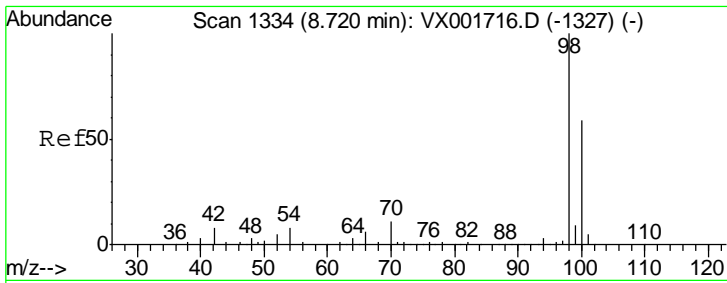
Tgt Ion	Resp	Lower	Upper
117	100		
119	5.0	77.6	116.4#
121	0.0	24.6	36.8#



#44
 Trichloroethene
 Concen: 0.42 ug/l
 RT: 7.22 min Scan# 1088
 Delta R.T. -0.00 min
 Lab File: VX001833.D
 Acq: 18 May 2018 18:27

Tgt Ion	Resp	Lower	Upper
130	100		
95	85.4	0.0	177.2

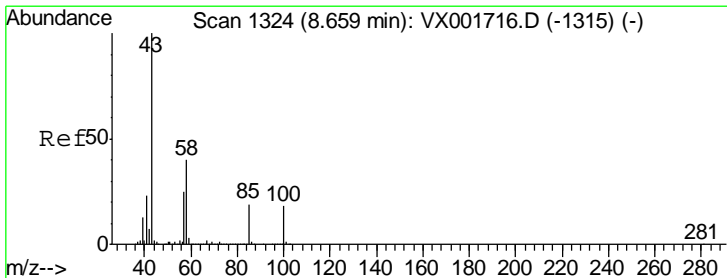
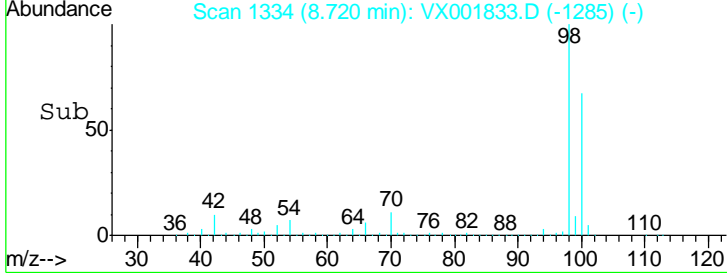
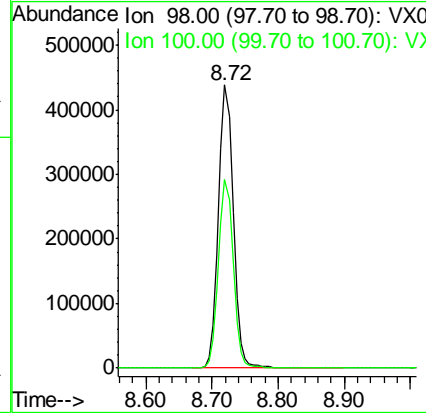
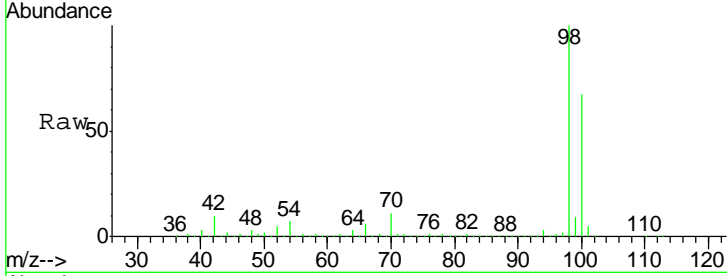




#50
 Toluene-d8
 Concen: 51.17 ug/l
 RT: 8.72 min Scan# 1334
 Delta R.T. -0.00 min
 Lab File: VX001833.D
 Acq: 18 May 2018 18:27

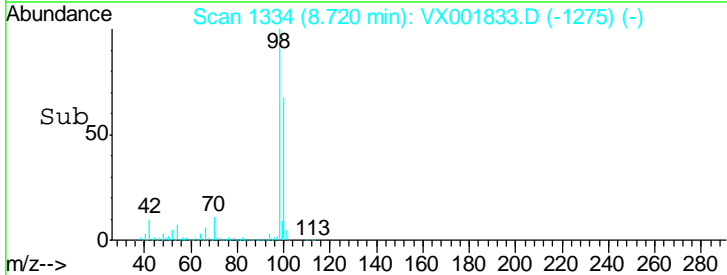
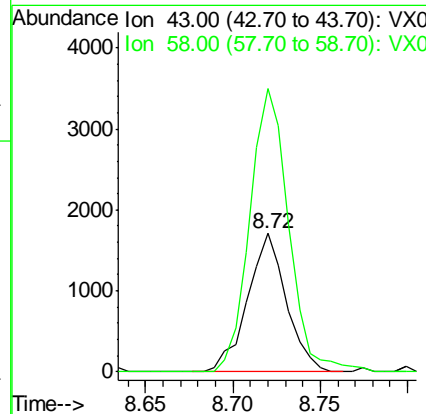
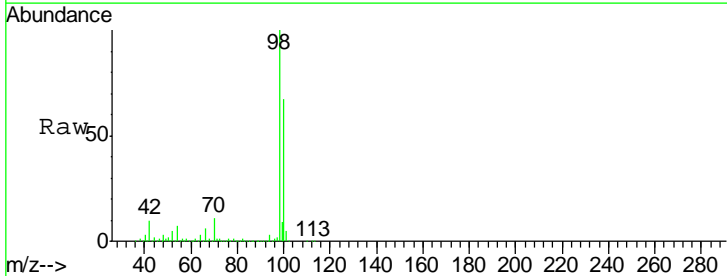
Instrument :
 MSVOA_X
 ClientSampled :

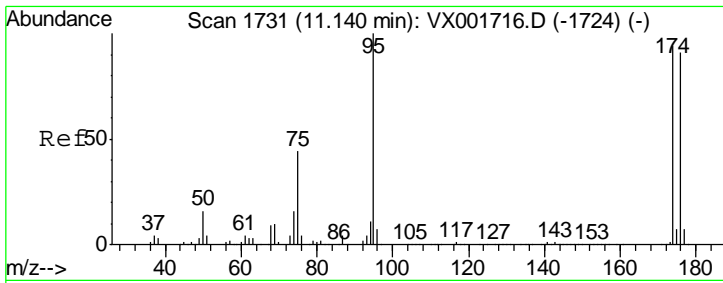
Tgt Ion	Resp	Lower	Upper
98	682874		
100	100		
100	66.6	54.0	81.0



#51
 4-Methyl-2-Pentanone
 Concen: 0.50 ug/l
 RT: 8.72 min Scan# 1334
 Delta R.T. 0.06 min
 Lab File: VX001833.D
 Acq: 18 May 2018 18:27

Tgt Ion	Resp	Lower	Upper
43	2629		
58	100		
58	205.6	31.4	47.0#

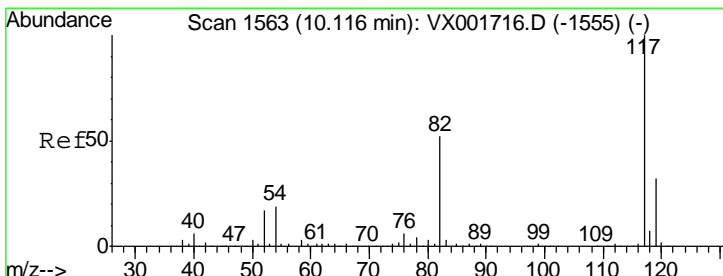
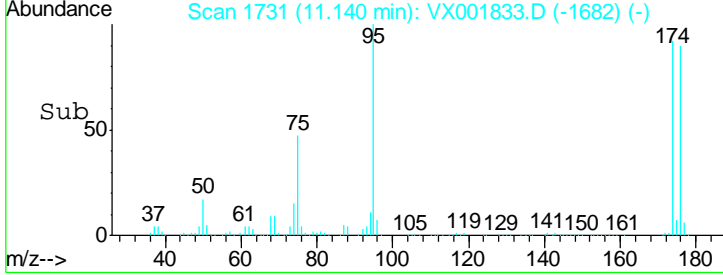
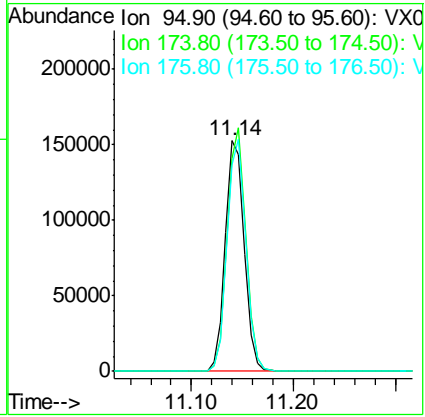
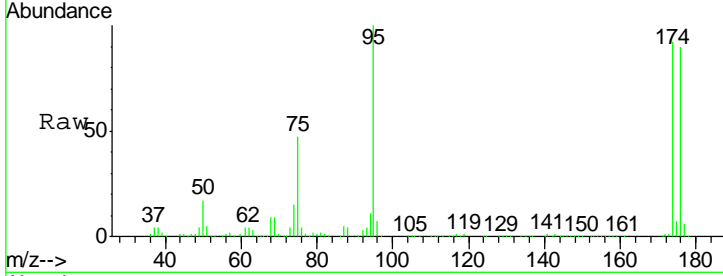




#62
 4-Bromofluorobenzene
 Concen: 40.94 ug/l
 RT: 11.14 min Scan# 1731
 Delta R.T. -0.00 min
 Lab File: VX001833.D
 Acq: 18 May 2018 18:27

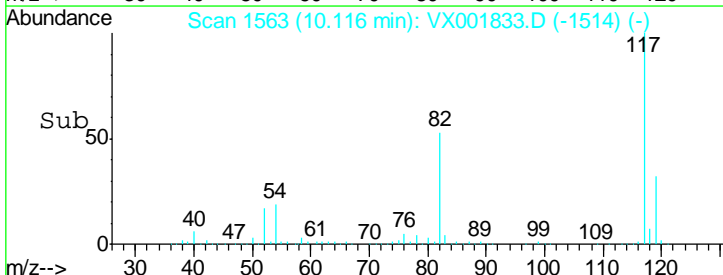
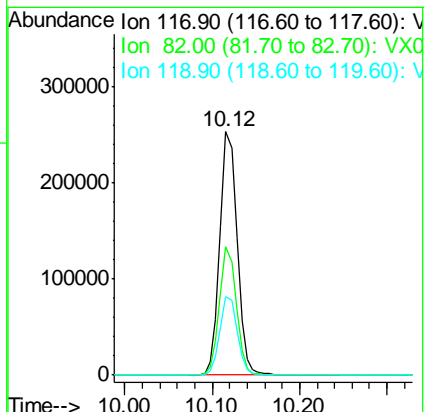
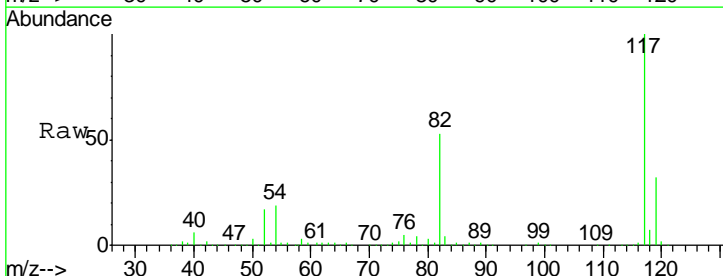
Instrument :
 MSVOA_X
 ClientSampled :

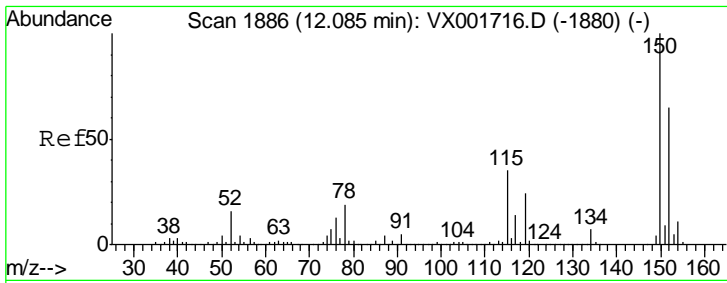
Tgt Ion	Resp	Lower	Upper
95	196713		
174	102.7	0.0	201.8
176	99.1	0.0	196.8



#63
 Chlorobenzene-d5
 Concen: 50.00 ug/l
 RT: 10.12 min Scan# 1563
 Delta R.T. -0.00 min
 Lab File: VX001833.D
 Acq: 18 May 2018 18:27

Tgt Ion	Resp	Lower	Upper
117	346747		
82	52.8	41.4	62.2
119	32.5	25.6	38.4

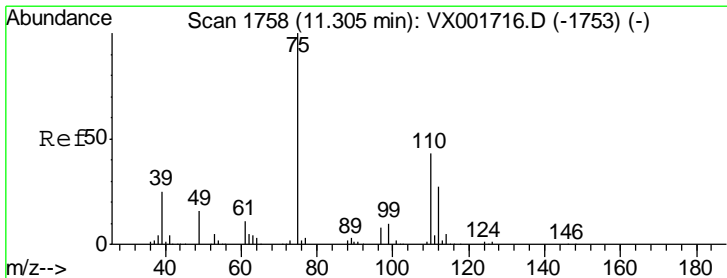
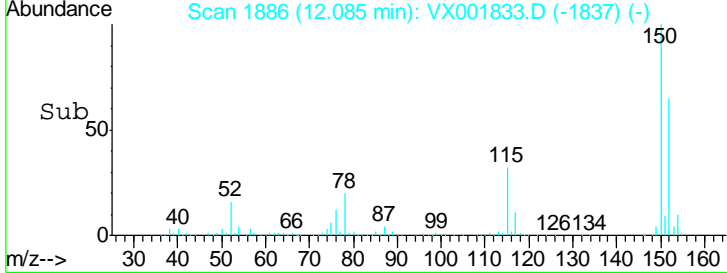
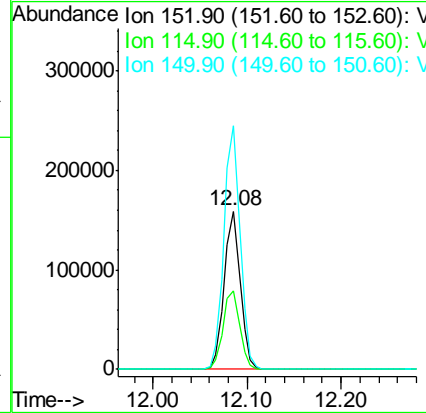
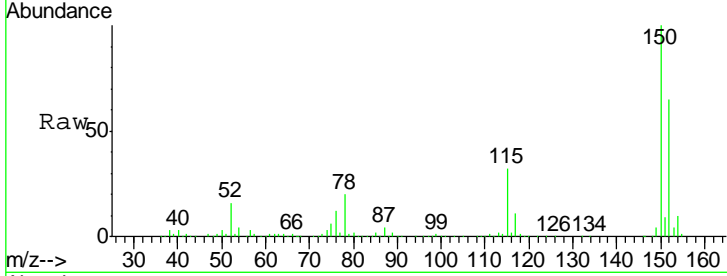




#72
 1,4-Dichlorobenzene-d4
 Concen: 50.00 ug/l
 RT: 12.08 min Scan# 1886
 Delta R.T. -0.00 min
 Lab File: VX001833.D
 Acq: 18 May 2018 18:27

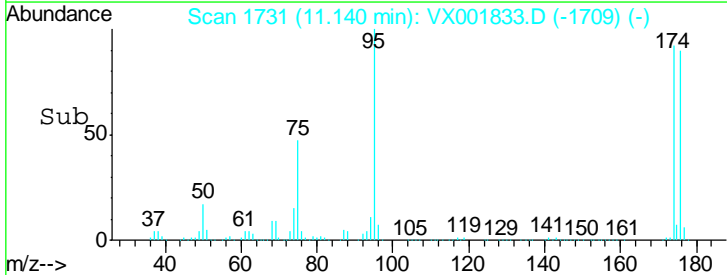
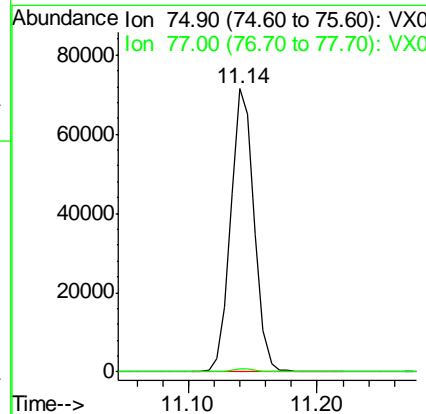
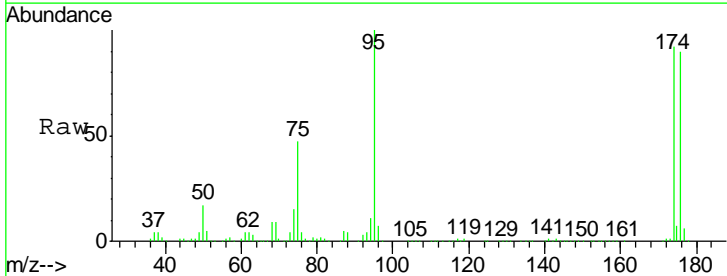
Instrument : MSVOA_X
 ClientSampled :

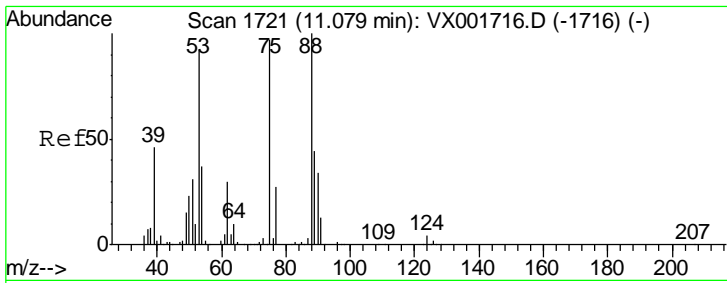
Tgt Ion	Resp	Lower	Upper
152	100		
115	51.6	37.4	112.2
150	155.4	0.0	344.8



#76
 1,2,3-Trichloropropane
 Concen: 25.43 ug/l
 RT: 11.14 min Scan# 1731
 Delta R.T. -0.16 min
 Lab File: VX001833.D
 Acq: 18 May 2018 18:27

Tgt Ion	Resp	Lower	Upper
75	100		
77	1.3	18.9	56.7#





#81
 trans-1,4-Dichloro-2-butene
 Concen: 74.08 ug/l
 RT: 11.14 min Scan# 1731
 Delta R.T. 0.06 min
 Lab File: VX001833.D
 Acq: 18 May 2018 18:27

Instrument :
 MSVOA_X
 ClientSampled :

Tot Ion	Resp	Lower	Upper
75	91740		
53	0.1	79.4	119.2#
89	0.0	38.8	58.2#

