

Data Path : W:\HPCHEM1\MSVOA X\DATA\VX052218\
 Data File : VX001908.D
 Acq On : 22 May 2018 21:52
 Operator : JC/MD
 Sample : PB109525ZHE#15
 Misc : 5.0mL/MSVOA X/WATER
 ALS Vial : 19 Sample Multiplier: 1

Instrument :
 MSVOA_X
 ClientSampleId :
 PB109525ZHE#15

Quant Time: May 23 02:28:46 2018
 Quant Method : W:\HPCHEM1\MSVOA_X\METHOD\82X051518W.M
 Quant Title : SW846 8260
 QLast Update : Tue May 15 01:36:22 2018
 Response via : Initial Calibration

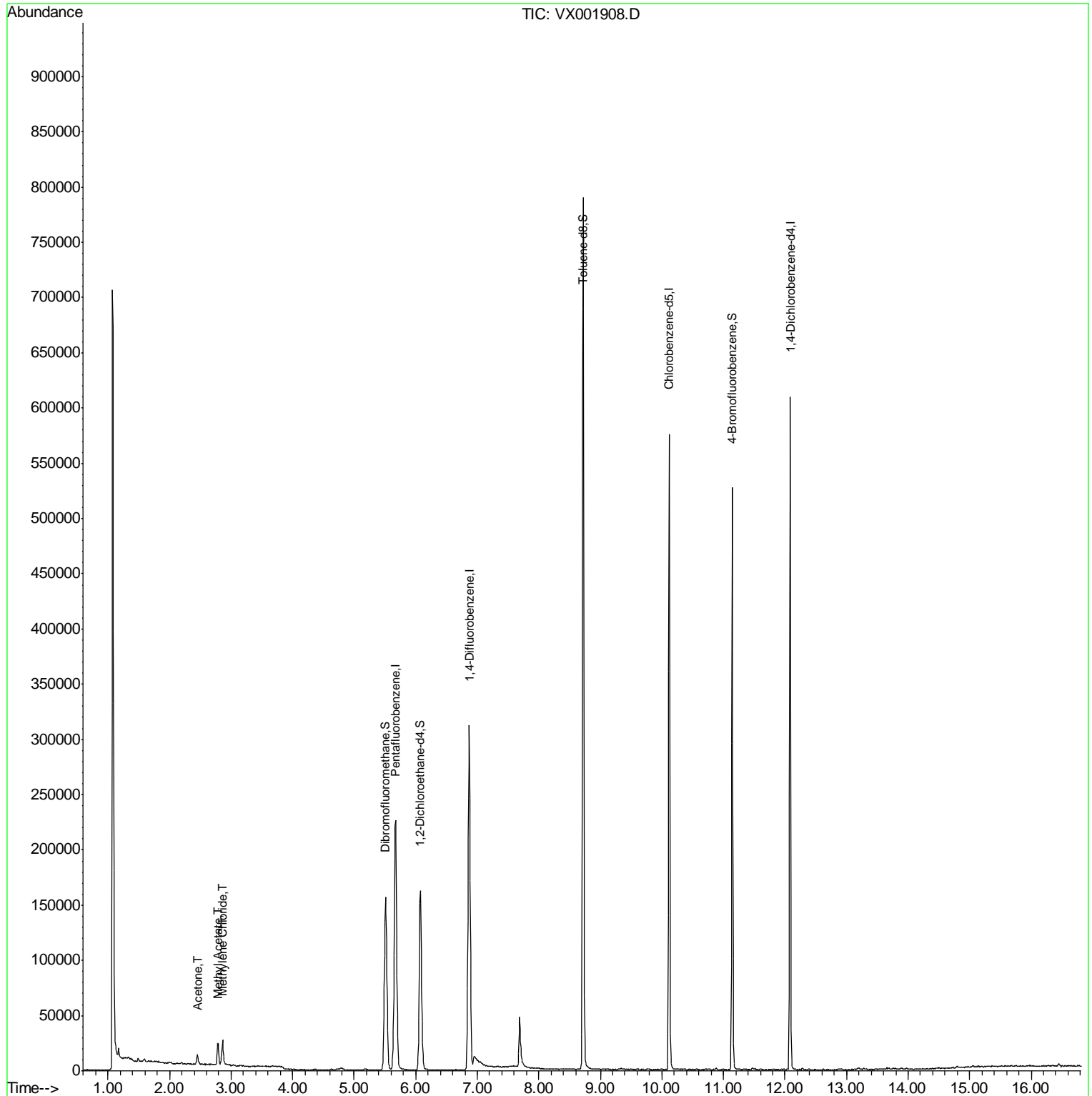
Internal Standards	R.T.	QIon	Response	Conc	Units	Dev(Min)
1) Pentafluorobenzene	5.67	168	238456	50.00	ug/l	0.00
34) 1,4-Difluorobenzene	6.87	114	319996	50.00	ug/l	0.00
63) Chlorobenzene-d5	10.12	117	271230	50.00	ug/l	0.00
72) 1,4-Dichlorobenzene-d4	12.09	152	133290	50.00	ug/l	0.00
System Monitoring Compounds						
33) 1,2-Dichloroethane-d4	6.07	65	155109	48.53	ug/l	0.00
Spiked Amount	50.000		Recovery	=	97.06%	
35) Dibromofluoromethane	5.51	113	128955	47.75	ug/l	0.00
Spiked Amount	50.000		Recovery	=	95.50%	
50) Toluene-d8	8.72	98	455420	47.09	ug/l	0.00
Spiked Amount	50.000		Recovery	=	94.18%	
62) 4-Bromofluorobenzene	11.14	95	132686	38.10	ug/l	0.00
Spiked Amount	50.000		Recovery	=	76.20%	
Target Compounds						
16) Acetone	2.45	43	9168	7.30	ug/l	90
18) Methyl Acetate	2.78	43	24457	6.66	ug/l	98
20) Methylene Chloride	2.86	84	10203	3.80	ug/l	96

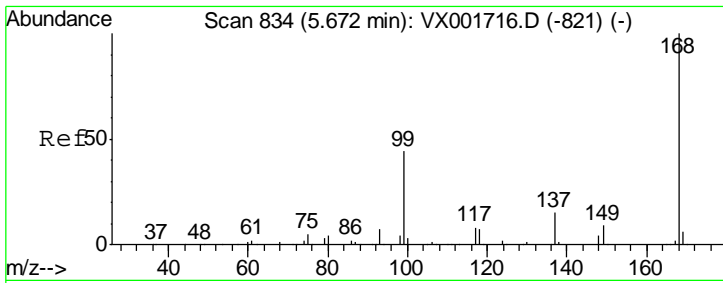
(#) = qualifier out of range (m) = manual integration (+) = signals summed

Data Path : W:\HPCHEM1\MSVOA X\DATA\VX052218\
Data File : VX001908.D
Acq On : 22 May 2018 21:52
Operator : JC/MD
Sample : PB109525ZHE#15
Misc : 5.0mL/MSVOA X/WATER
ALS Vial : 19 Sample Multiplier: 1

Instrument :
MSVOA_X
ClientSampleId :
PB109525ZHE#15

Quant Time: May 23 02:28:46 2018
Quant Method : W:\HPCHEM1\MSVOA_X\METHOD\82X051518W.M
Quant Title : SW846 8260
QLast Update : Tue May 15 01:36:22 2018
Response via : Initial Calibration

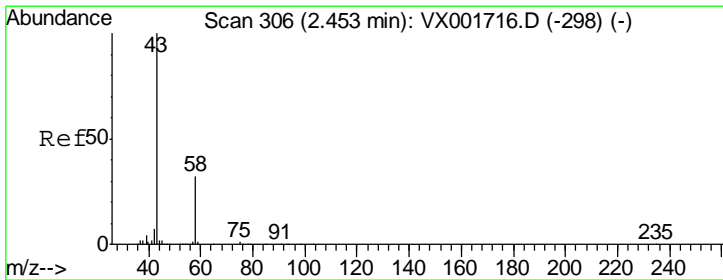
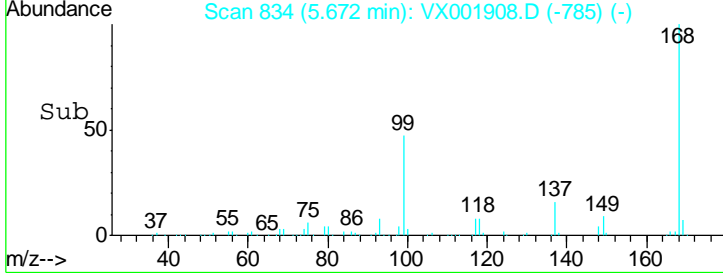
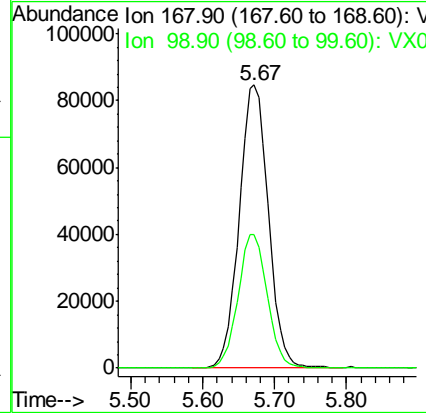
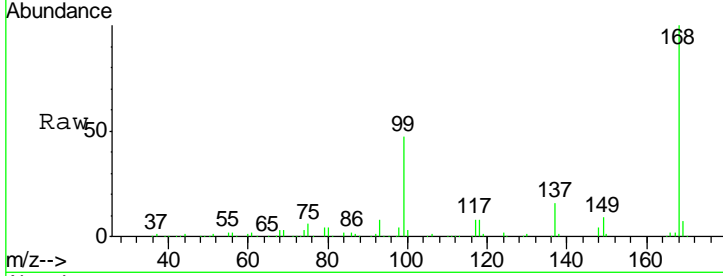




#1
 Pentafluorobenzene
 Concen: 50.00 ug/l
 RT: 5.67 min Scan# 834
 Delta R.T. -0.00 min
 Lab File: VX001908.D
 Acq: 22 May 2018 21:52

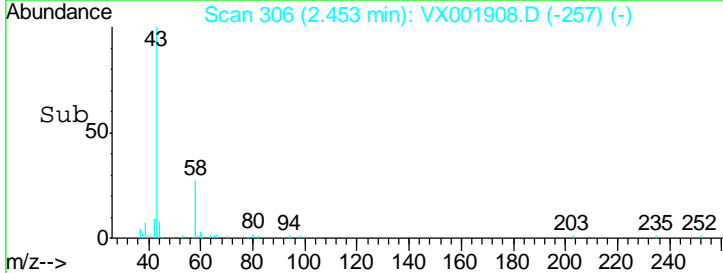
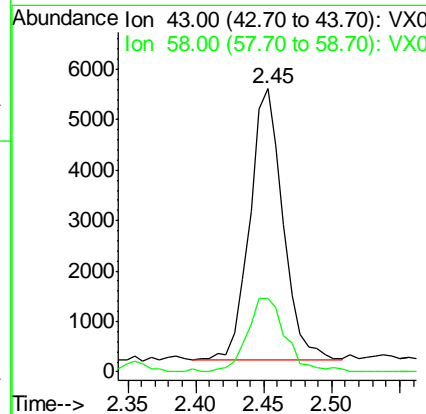
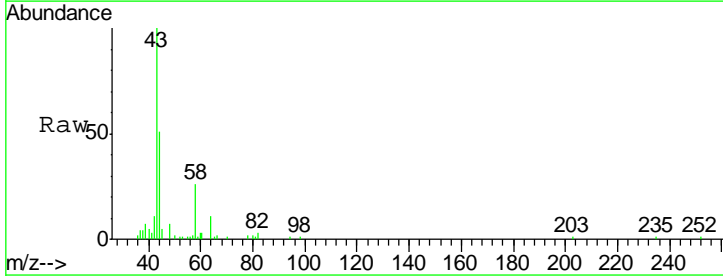
Instrument : MSVOA_X
 ClientSampleId : PB109525ZHE#15

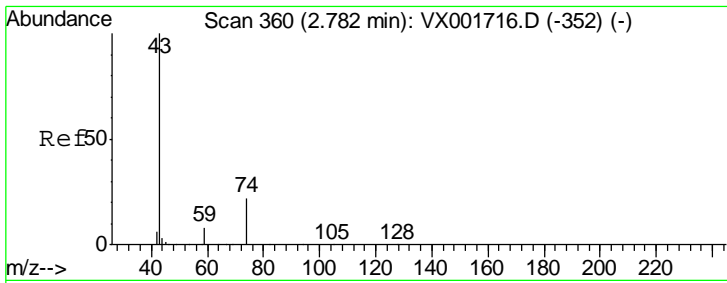
Tgt Ion	Resp	Lower	Upper
168	100		
99	47.1	35.0	52.4



#16
 Acetone
 Concen: 7.30 ug/l
 RT: 2.45 min Scan# 306
 Delta R.T. -0.00 min
 Lab File: VX001908.D
 Acq: 22 May 2018 21:52

Tgt Ion	Resp	Lower	Upper
43	100		
58	25.9	25.3	37.9

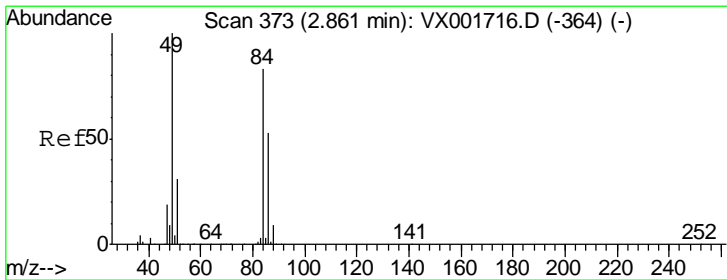
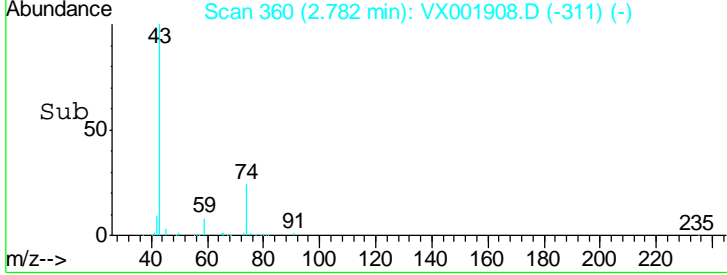
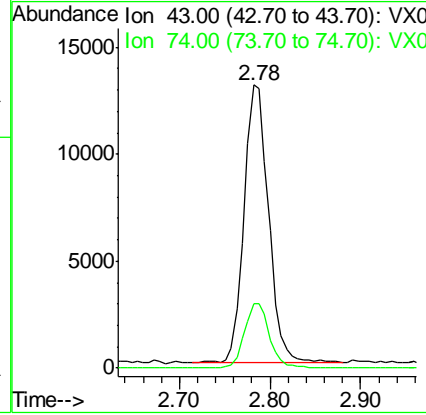
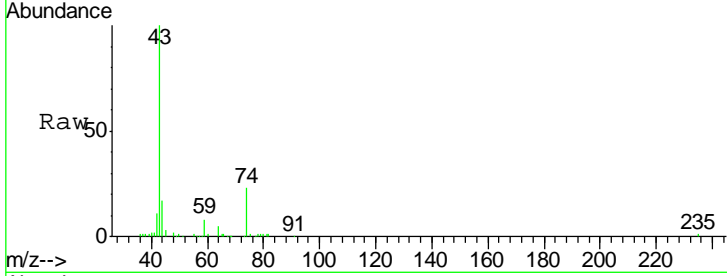




#18
Methyl Acetate
Concen: 6.66 ug/l
RT: 2.78 min Scan# 360
Delta R.T. -0.00 min
Lab File: VX001908.D
Acq: 22 May 2018 21:52

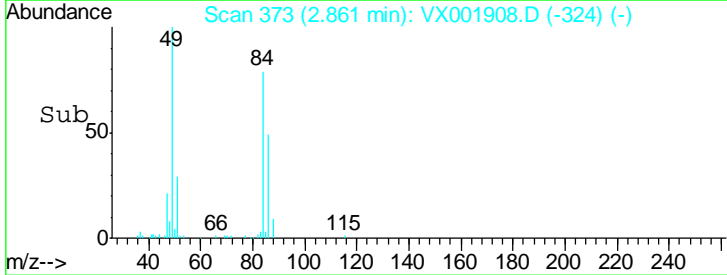
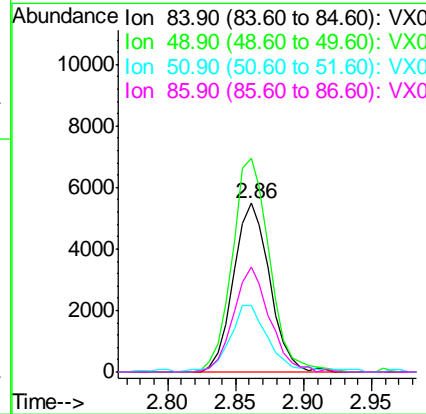
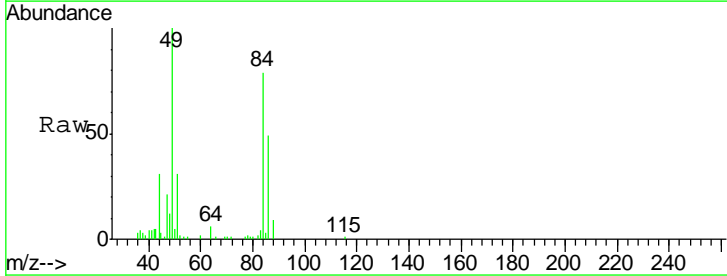
Instrument :
MSVOA_X
ClientSampled :
PB109525ZHE#15

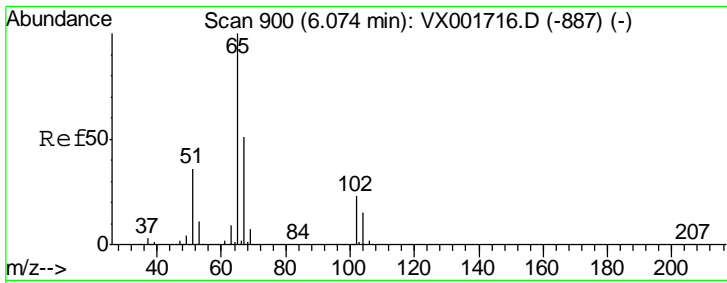
Tgt Ion	Resp	Lower	Upper
43	100		
74	23.5	18.2	27.2



#20
Methylene Chloride
Concen: 3.80 ug/l
RT: 2.86 min Scan# 373
Delta R.T. -0.00 min
Lab File: VX001908.D
Acq: 22 May 2018 21:52

Tgt Ion	Resp	Lower	Upper
84	100		
49	126.6	96.3	144.5
51	37.6	29.8	44.6
86	62.5	51.0	76.6

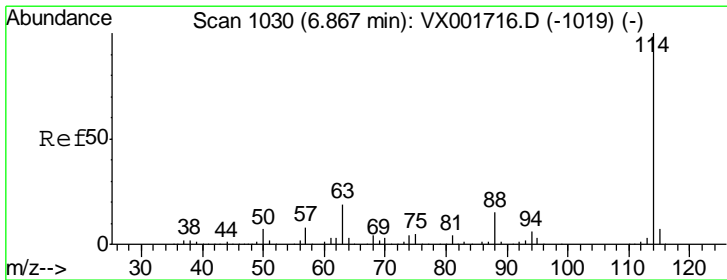
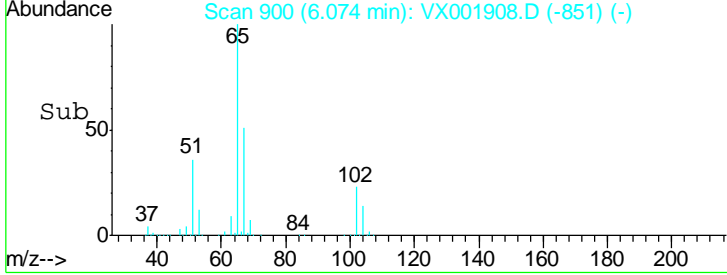
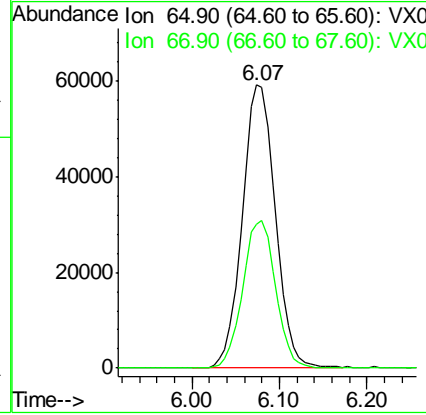
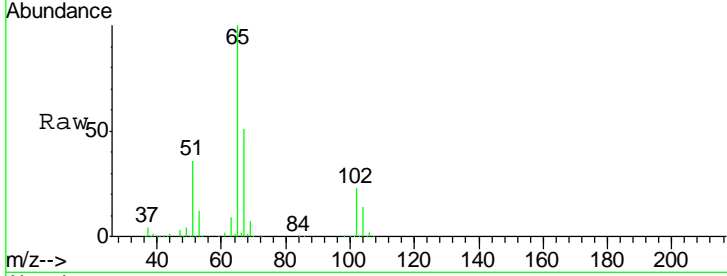




#33
 1,2-Dichloroethane-d4
 Concen: 48.53 ug/l
 RT: 6.07 min Scan# 900
 Delta R.T. -0.00 min
 Lab File: VX001908.D
 Acq: 22 May 2018 21:52

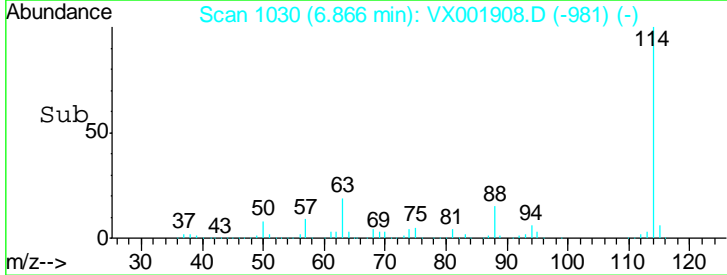
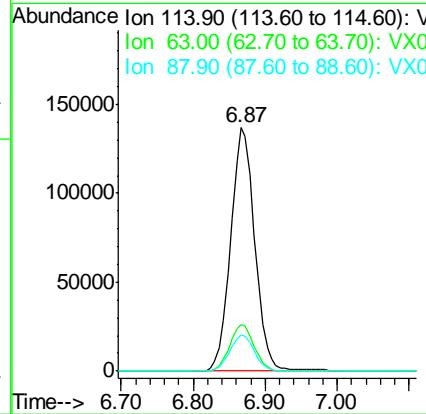
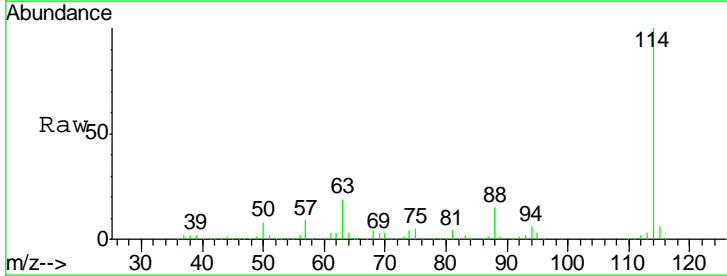
Instrument :
 MSVOA_X
ClientSampled :
 PB109525ZHE#15

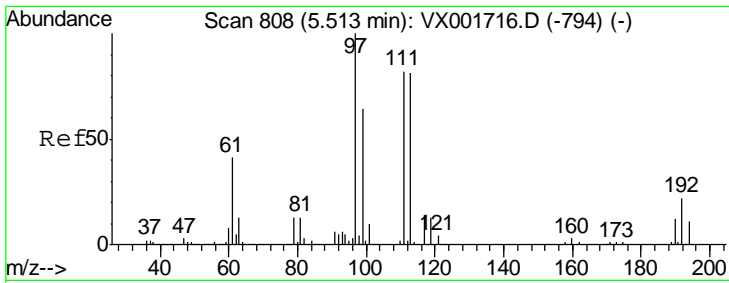
Tgt Ion	Resp	Lower	Upper
65	155109		
67	52.0	0.0	102.8



#34
 1,4-Difluorobenzene
 Concen: 50.00 ug/l
 RT: 6.87 min Scan# 1030
 Delta R.T. -0.00 min
 Lab File: VX001908.D
 Acq: 22 May 2018 21:52

Tgt Ion	Resp	Lower	Upper
114	319996		
63	19.2	0.0	37.0
88	14.8	0.0	29.8

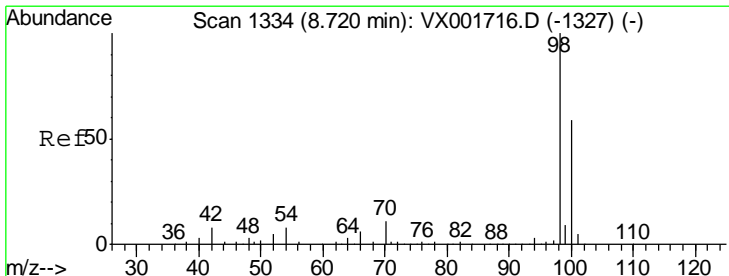
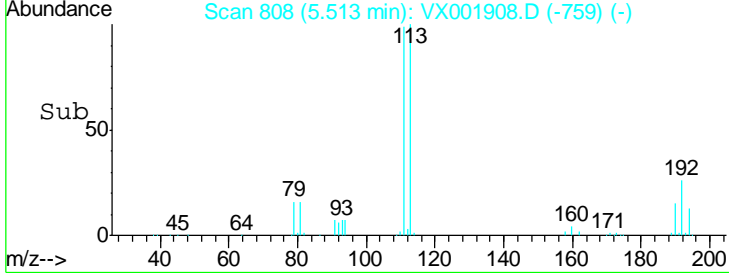
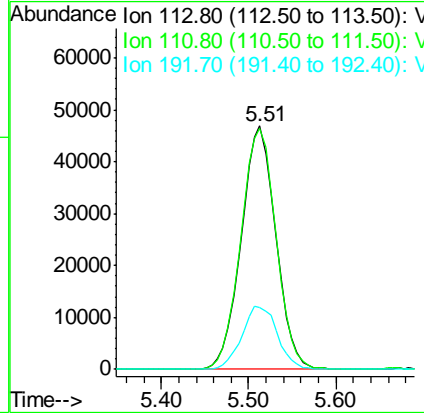
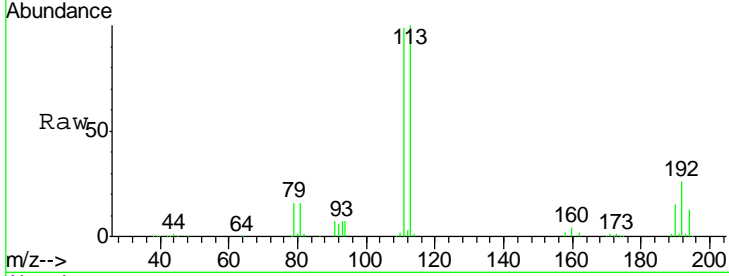




#35
 Dibromofluoromethane
 Concen: 47.75 ug/l
 RT: 5.51 min Scan# 808
 Delta R.T. -0.00 min
 Lab File: VX001908.D
 Acq: 22 May 2018 21:52

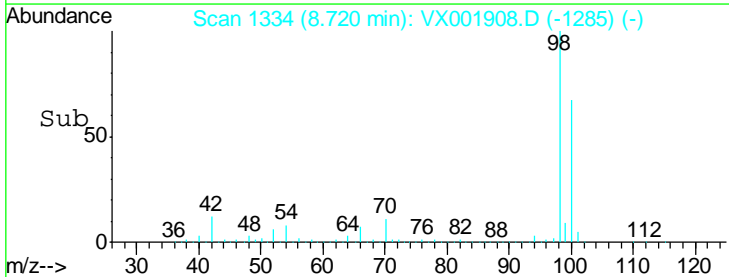
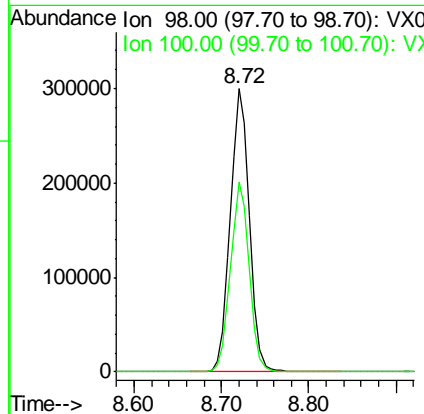
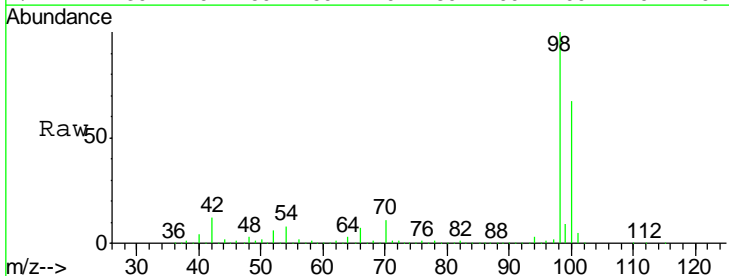
Instrument : MSVOA_X
 ClientSampled : PB109525ZHE#15

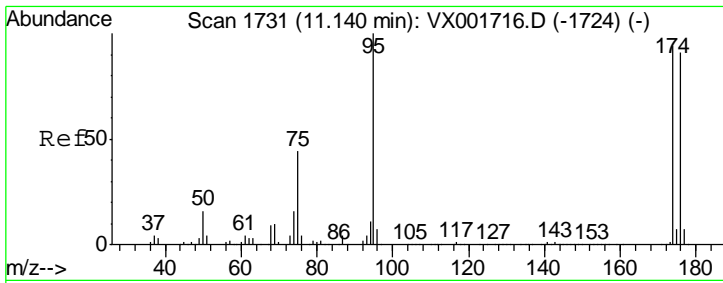
Tgt Ion	Resp	Lower	Upper
113	128955		
111	101.2	82.0	123.0
192	26.7	21.6	32.4



#50
 Toluene-d8
 Concen: 47.09 ug/l
 RT: 8.72 min Scan# 1334
 Delta R.T. -0.00 min
 Lab File: VX001908.D
 Acq: 22 May 2018 21:52

Tgt Ion	Resp	Lower	Upper
98	455420		
100	65.9	54.0	81.0

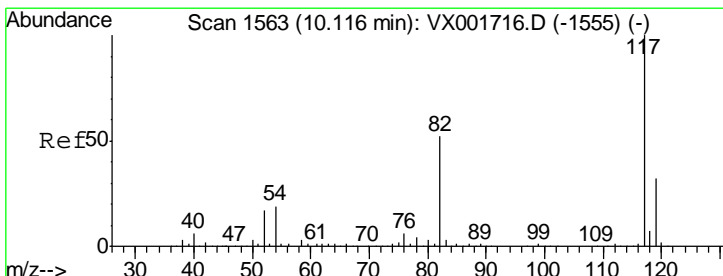
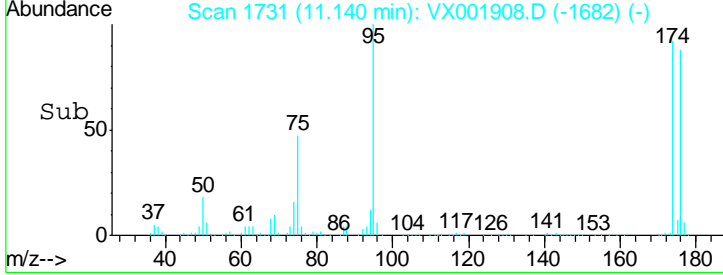
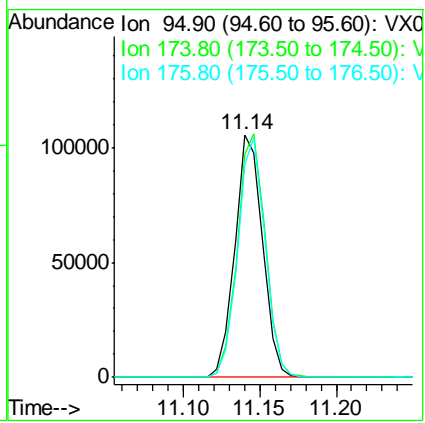
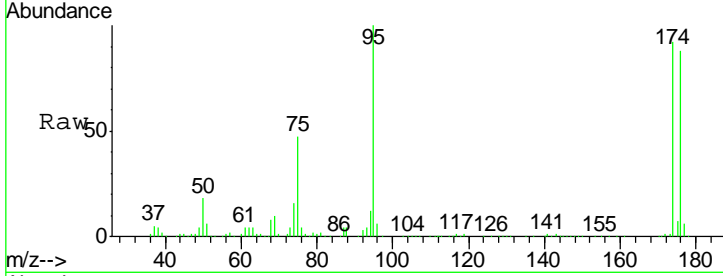




#62
 4-Bromofluorobenzene
 Concen: 38.10 ug/l
 RT: 11.14 min Scan# 1731
 Delta R.T. -0.00 min
 Lab File: VX001908.D
 Acq: 22 May 2018 21:52

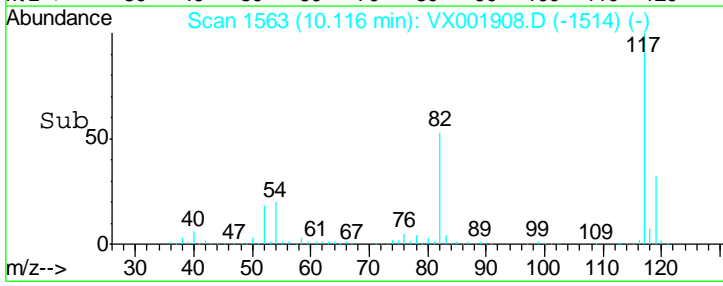
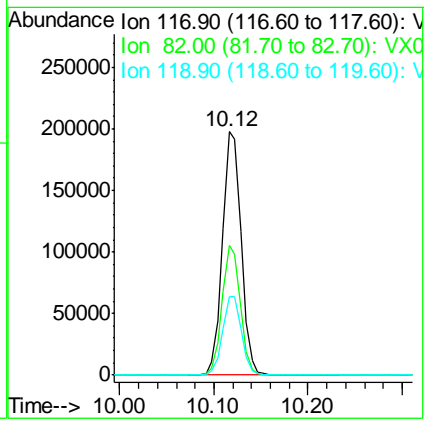
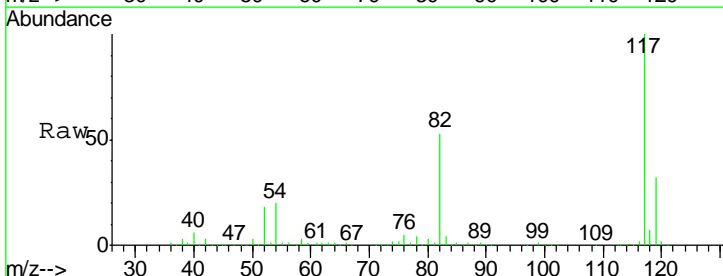
Instrument : MSVOA_X
 ClientSampled : PB109525ZHE#15

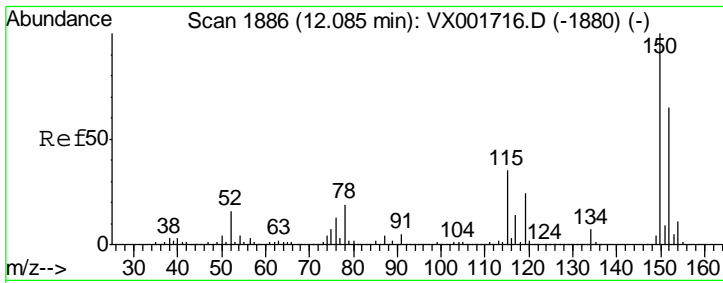
Tgt Ion	Resp	Lower	Upper
95	132686		
174	101.5	0.0	201.8
176	97.3	0.0	196.8



#63
 Chlorobenzene-d5
 Concen: 50.00 ug/l
 RT: 10.12 min Scan# 1563
 Delta R.T. -0.00 min
 Lab File: VX001908.D
 Acq: 22 May 2018 21:52

Tgt Ion	Resp	Lower	Upper
117	271230		
82	53.4	41.4	62.2
119	32.1	25.6	38.4





#72
 1,4-Dichlorobenzene-d4
 Concen: 50.00 ug/l
 RT: 12.09 min Scan# 1886
 Delta R.T. -0.00 min
 Lab File: VX001908.D
 Acq: 22 May 2018 21:52

Instrument :
 MSVOA_X
ClientSampled :
 PB109525ZHE#15

Tot Ion	Resp	Lower	Upper
152	133290		
115	51.5	37.4	112.2
150	153.7	0.0	344.8

