

Data File : VX001997.D
 Acq On : 26 May 2018 01:03
 Operator : JC/MD
 Sample : PB109661ZHE#05
 Misc : 5.0mL/MSVOA_X/WATER
 ALS Vial : 34 Sample Multiplier: 1

Instrument :
 MSVOA_X
 ClientSampleId :
 PB109661ZHE#05

Quant Time: May 26 04:24:41 2018
 Quant Method : W:\HPCHEM1\MSVOA_X\METHOD\82X052418W.M
 Quant Title : SW846 8260
 QLast Update : Thu May 24 13:09:03 2018
 Response via : Initial Calibration

Internal Standards	R.T.	QIon	Response	Conc	Units	Dev(Min)
1) Pentafluorobenzene	5.67	168	292828	50.00	ug/l	0.00
34) 1,4-Difluorobenzene	6.87	114	444440	50.00	ug/l	0.00
63) Chlorobenzene-d5	10.12	117	404791	50.00	ug/l	0.00
72) 1,4-Dichlorobenzene-d4	12.09	152	217085	50.00	ug/l	0.00

System Monitoring Compounds

33) 1,2-Dichloroethane-d4	6.07	65	276721	52.87	ug/l	0.00
Spiked Amount	50.000		Recovery	=	105.74%	
35) Dibromofluoromethane	5.51	113	212810	47.88	ug/l	0.00
Spiked Amount	50.000		Recovery	=	95.76%	
50) Toluene-d8	8.72	98	750264	46.63	ug/l	0.00
Spiked Amount	50.000		Recovery	=	93.26%	
62) 4-Bromofluorobenzene	11.14	95	275919	43.83	ug/l	0.00
Spiked Amount	50.000		Recovery	=	87.66%	

Target Compounds

						Qvalue
2) Dichlorodifluoromethane	1.19	85	61	Below Cal	#	41
5) Bromomethane	1.66	94	1216	Below Cal	#	55
10) Methyl Iodide	2.52	142	2043	0.41	ug/l	# 82
13) Acrolein	2.29	56	207	0.47	ug/l	# 1
16) Acetone	2.45	43	14684	7.27	ug/l	97
18) Methyl Acetate	2.79	43	29400	5.02	ug/l	100
21) trans-1,2-Dichloroethene	3.17	96	214	Below Cal	#	77
25) 2-Butanone	4.71	43	3910	1.06	ug/l	96
28) Bromochloromethane	5.01	49	29	Below Cal	#	14
29) Tetrahydrofuran	5.18	42	1651	0.69	ug/l	# 73
36) 1,1-Dichloropropene	5.67	75	20555	3.32	ug/l	# 52
38) Carbon Tetrachloride	5.67	117	26503	3.68	ug/l	# 15
41) Methacrylonitrile	5.06	41	198	Below Cal	#	55
74) N-amyl acetate	6.47	43	232	Below Cal	#	59
75) 1,1,2,2-Tetrachloroethane	11.27	83	199	Below Cal	#	47
76) 1,2,3-Trichloropropane	11.14	75	143777	27.57	ug/l	# 33
79) 2-Chlorotoluene	11.52	91	578	Below Cal		92
81) trans-1,4-Dichloro-2-buten	11.14	75	143777	66.27	ug/l	# 10

(#) = qualifier out of range (m) = manual integration (+) = signals summed

Data File : VX001997.D

Acq On : 26 May 2018 01:03

Operator : JC/MD

Sample : PB109661ZHE#05

Misc : 5.0mL/MSVOA_X/WATER

ALS Vial : 34 Sample Multiplier: 1

Instrument : MSVOA_X
Client Sampled : PB109661ZHE#05

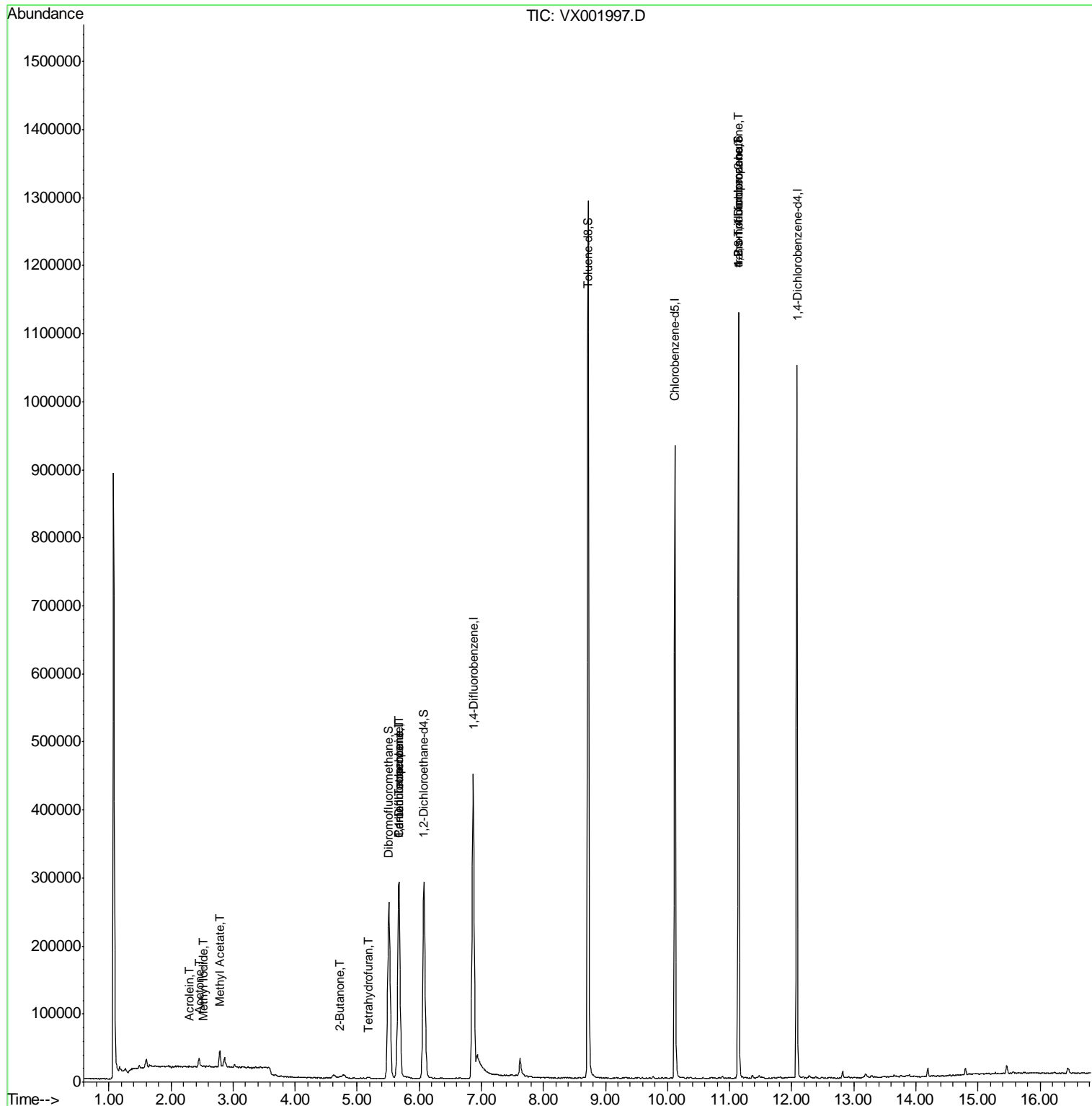
Quant Time: May 26 04:24:41 2018

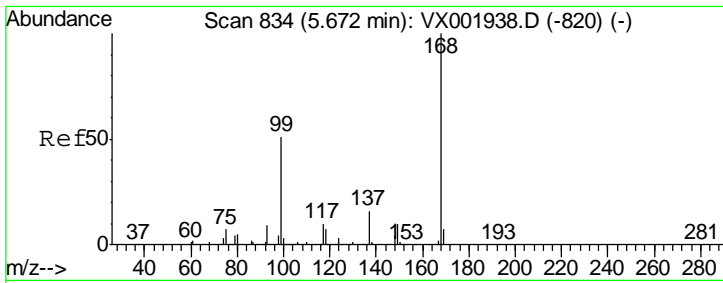
Quant Method : W:\HPCHEM1\MSVOA_X\METHOD\82X052418W.M

Quant Title : SW846 8260

QLast Update : Thu May 24 13:09:03 2018

Response via : Initial Calibration

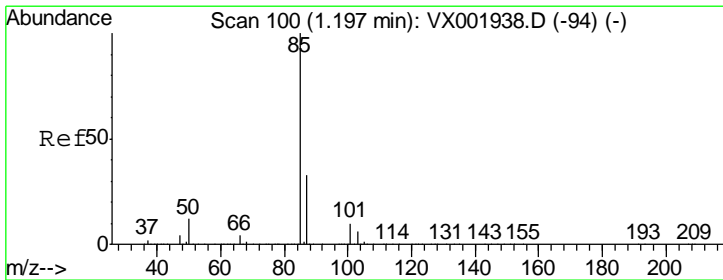
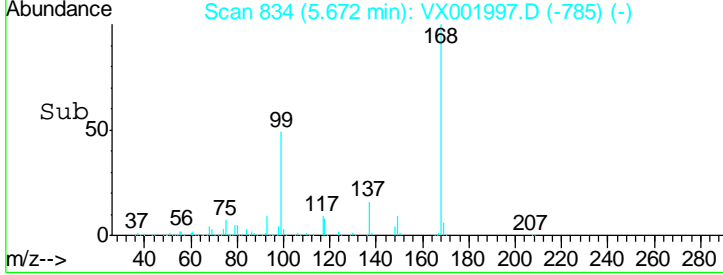
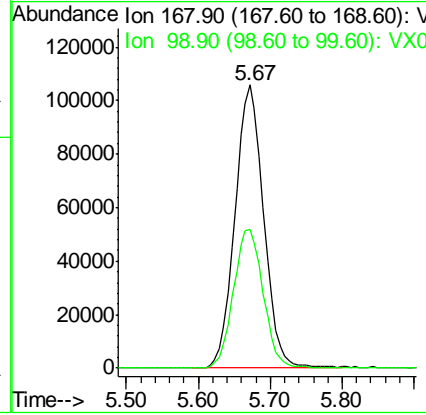
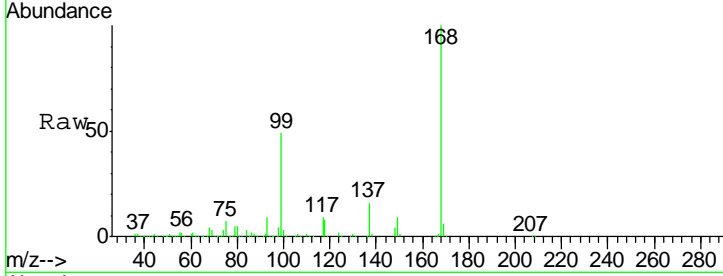




#1
 Pentafluorobenzene
 Concen: 50.00 ug/l
 RT: 5.67 min Scan# 834
 Delta R.T. -0.00 min
 Lab File: VX001997.D
 Acq: 26 May 2018 01:03

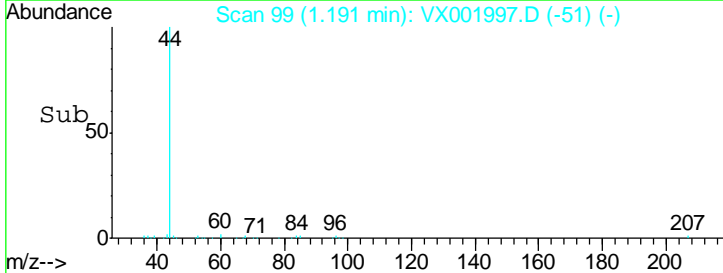
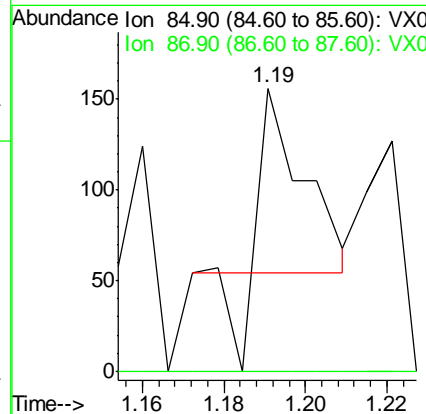
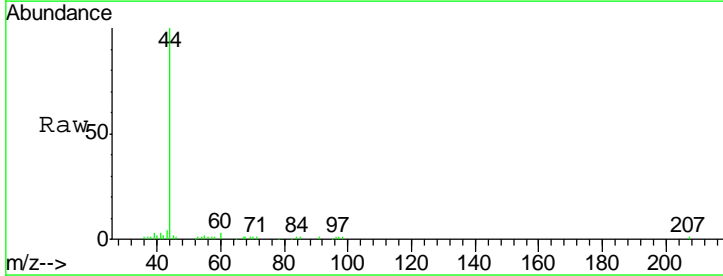
Instrument : MSVOA_X
 ClientSampleId : PB109661ZHE#05

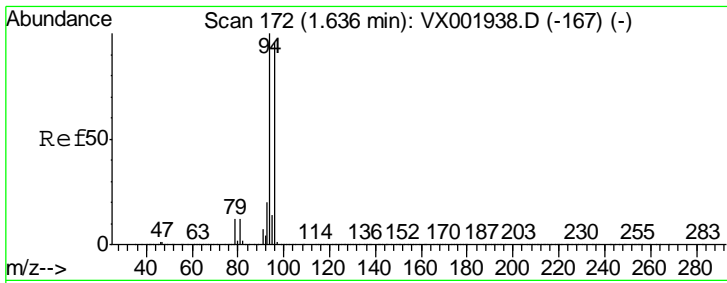
Tgt Ion	Resp	Lower	Upper
168	100		
99	49.2	41.0	61.4



#2
 Dichlorodifluoromethane
 Concen: Below Cal
 RT: 1.19 min Scan# 99
 Delta R.T. -0.01 min
 Lab File: VX001997.D
 Acq: 26 May 2018 01:03

Tgt Ion	Resp	Lower	Upper
85	100		
87	0.0	16.7	50.0#

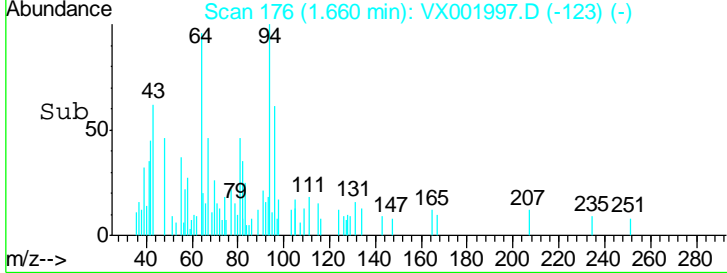
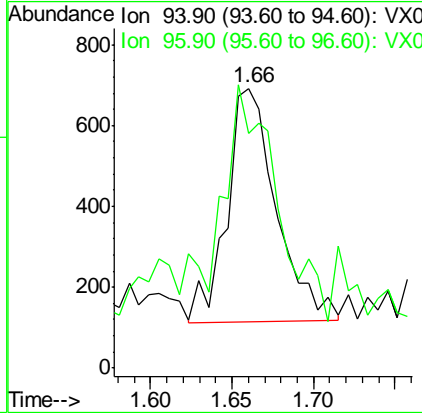
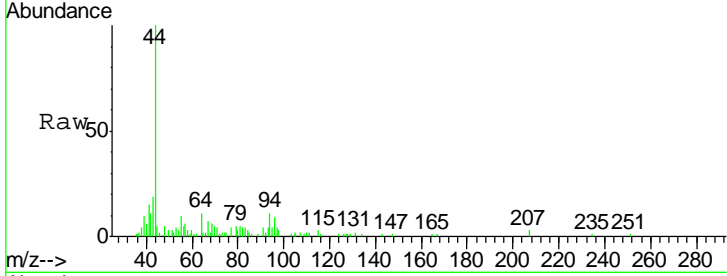




#5
 Bromomethane
 Concen: Below Cal
 RT: 1.66 min Scan# 176
 Delta R.T. 0.03 min
 Lab File: VX001997.D
 Acq: 26 May 2018 01:03

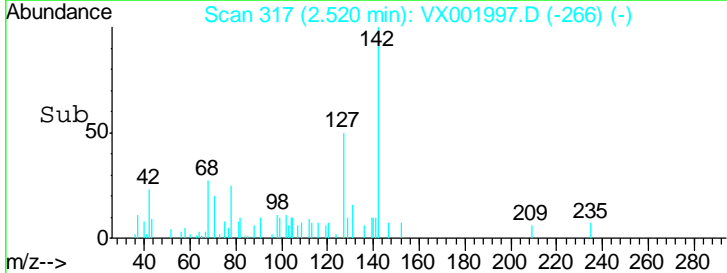
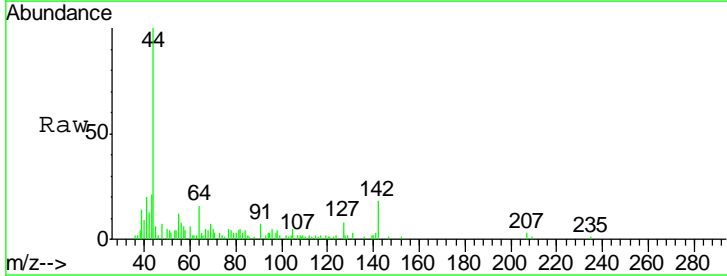
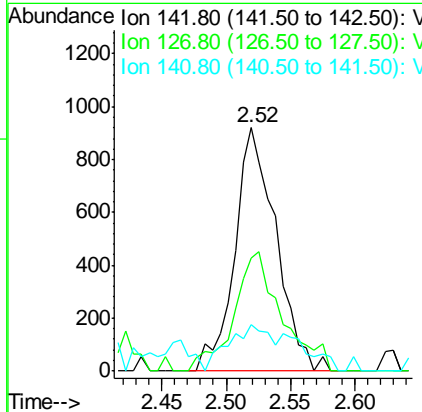
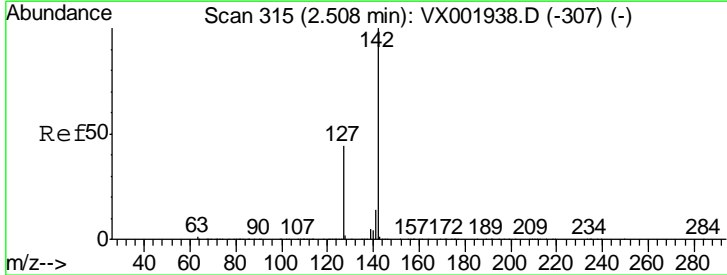
Instrument : MSVOA_X
 ClientSampleId : PB109661ZHE#05

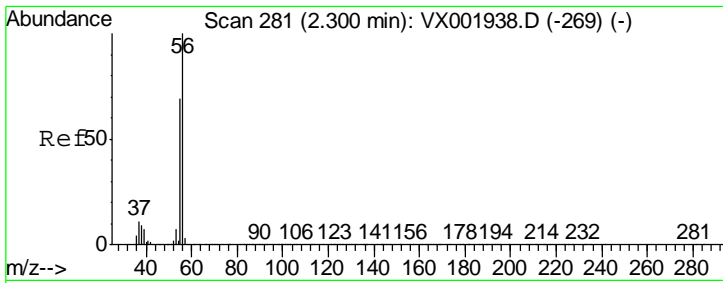
Tgt Ion: 94 Resp: 1216
 Ion Ratio Lower Upper
 94 100
 96 51.5 75.9 113.9#



#10
 Methyl Iodide
 Concen: 0.41 ug/l
 RT: 2.52 min Scan# 317
 Delta R.T. 0.01 min
 Lab File: VX001997.D
 Acq: 26 May 2018 01:03

Tgt Ion: 142 Resp: 2043
 Ion Ratio Lower Upper
 142 100
 127 56.9 35.5 53.3#
 141 19.5 11.3 16.9#

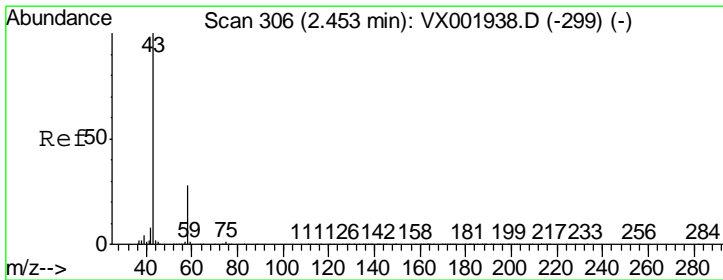
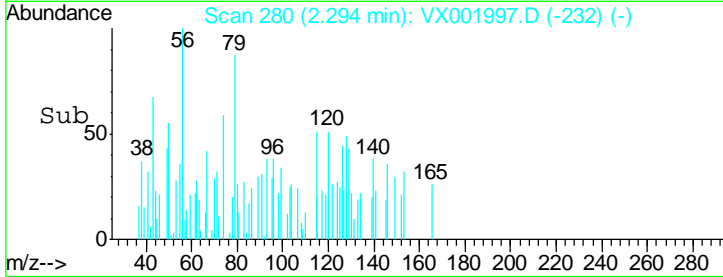
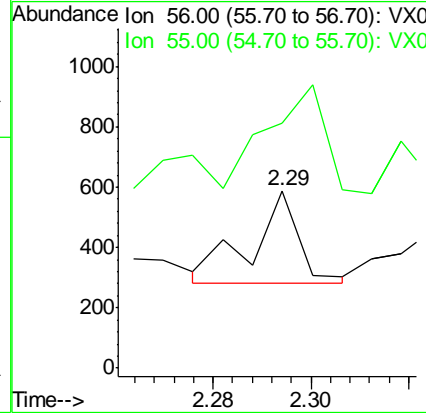
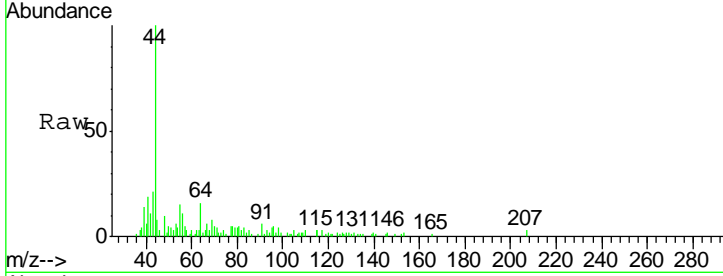




#13
 Acrolein
 Concen: 0.47 ug/l
 RT: 2.29 min Scan# 280
 Delta R.T. -0.01 min
 Lab File: VX001997.D
 Acq: 26 May 2018 01:03

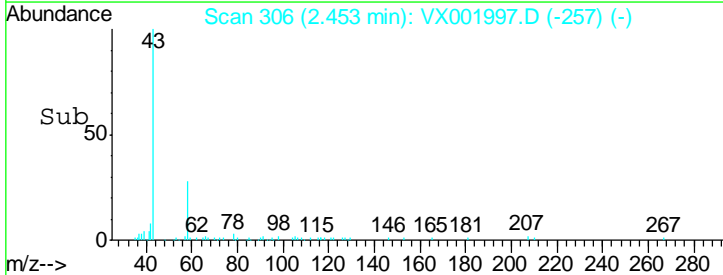
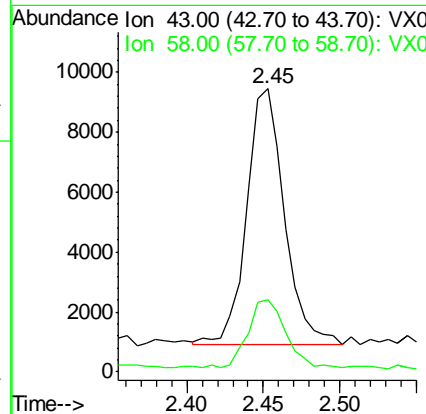
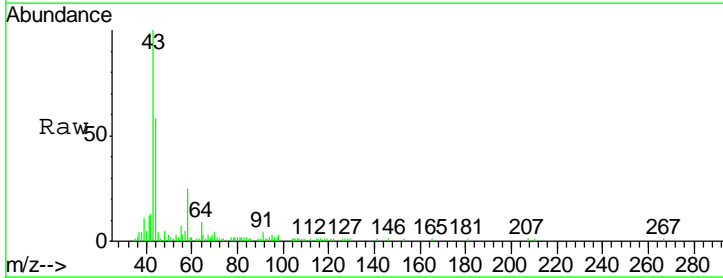
Instrument : MSVOA_X
 ClientSampled : PB109661ZHE#05

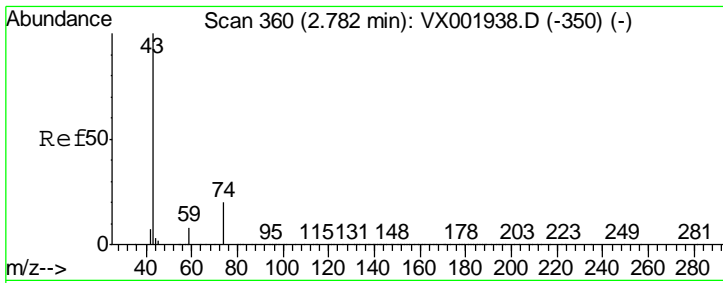
Tgt Ion: 56 Resp: 207
 Ion Ratio Lower Upper
 56 100
 55 315.0 56.8 85.2#



#16
 Acetone
 Concen: 7.27 ug/l
 RT: 2.45 min Scan# 306
 Delta R.T. -0.00 min
 Lab File: VX001997.D
 Acq: 26 May 2018 01:03

Tgt Ion: 43 Resp: 14684
 Ion Ratio Lower Upper
 43 100
 58 26.3 22.3 33.5

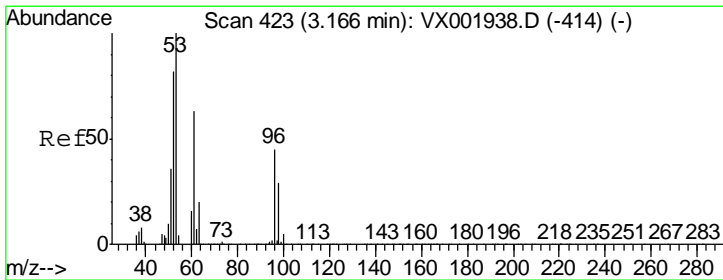
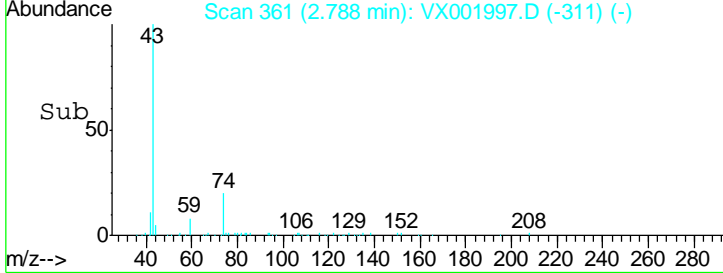
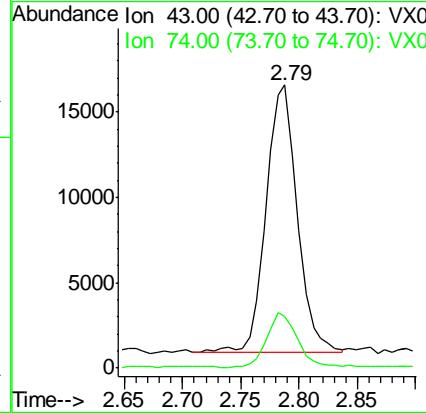
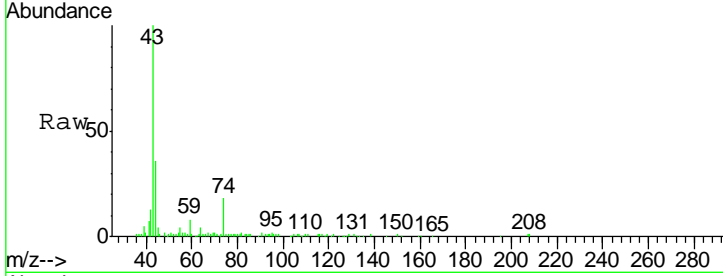




#18
 Methyl Acetate
 Concen: 5.02 ug/l
 RT: 2.79 min Scan# 361
 Delta R.T. 0.01 min
 Lab File: VX001997.D
 Acq: 26 May 2018 01:03

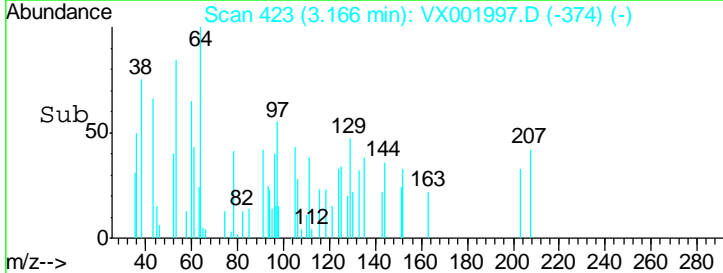
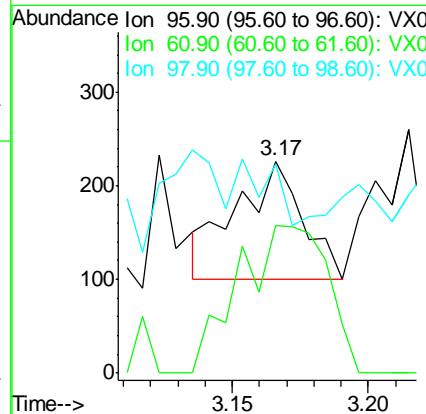
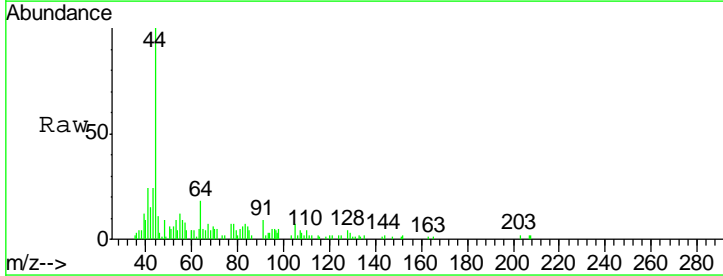
Instrument :
 MSVOA_X
ClientSampled :
 PB109661ZHE#05

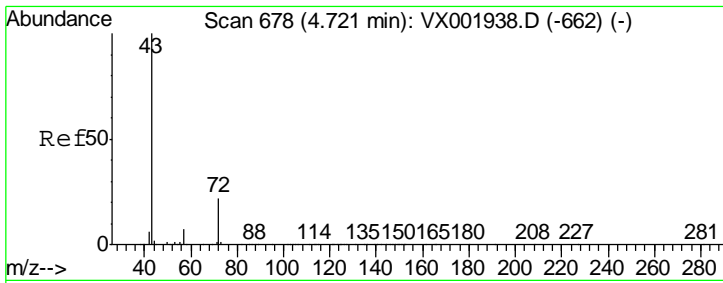
Tgt Ion	Resp	Lower	Upper
43	100		
74	21.2	16.8	25.2



#21
 trans-1,2-Dichloroethene
 Concen: Below Cal
 RT: 3.17 min Scan# 423
 Delta R.T. -0.00 min
 Lab File: VX001997.D
 Acq: 26 May 2018 01:03

Tgt Ion	Resp	Lower	Upper
96	100		
61	125.4	113.3	169.9
98	28.6	51.7	77.5#

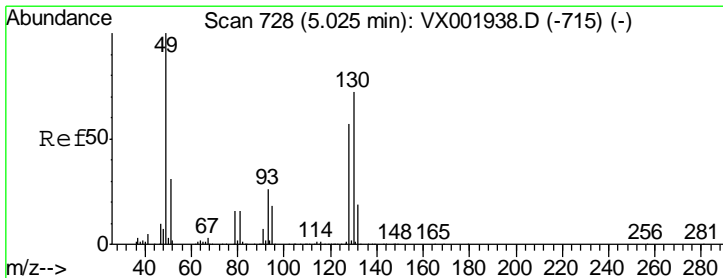
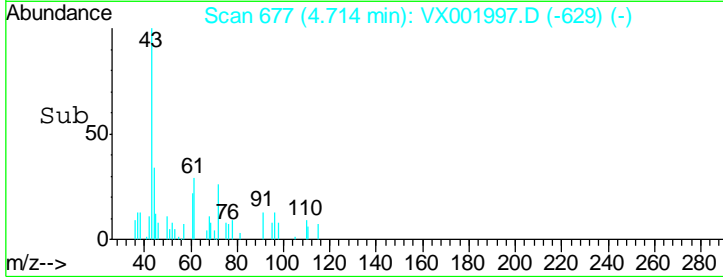
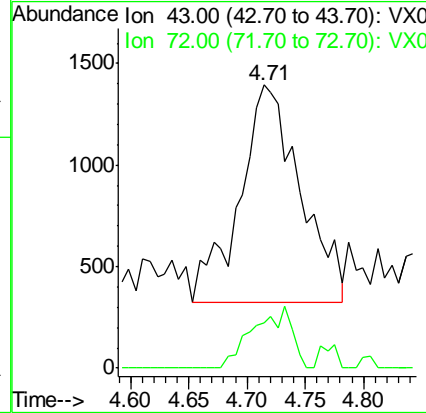
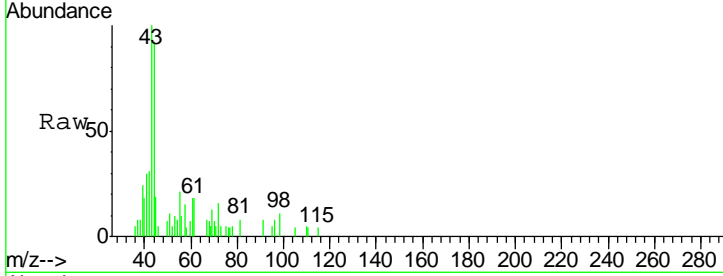




#25
 2-Butanone
 Concen: 1.06 ug/l
 RT: 4.71 min Scan# 677
 Delta R.T. -0.01 min
 Lab File: VX001997.D
 Acq: 26 May 2018 01:03

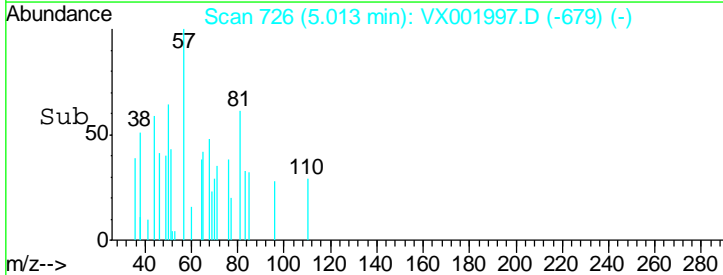
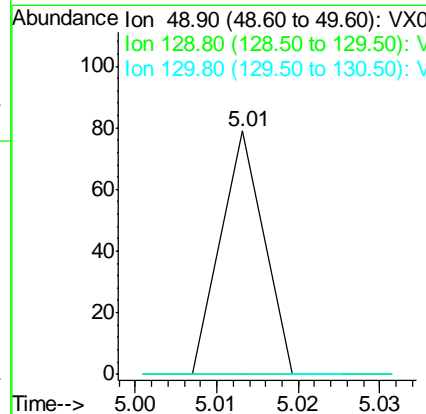
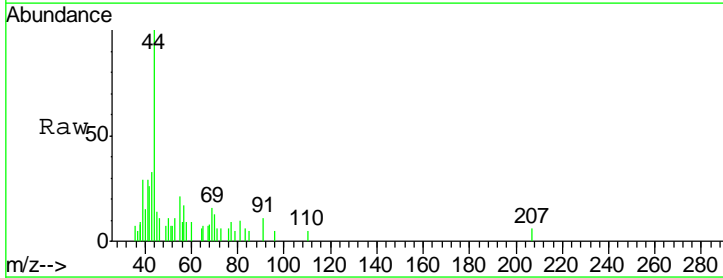
Instrument :
 MSVOA_X
 ClientSampled :
 PB109661ZHE#05

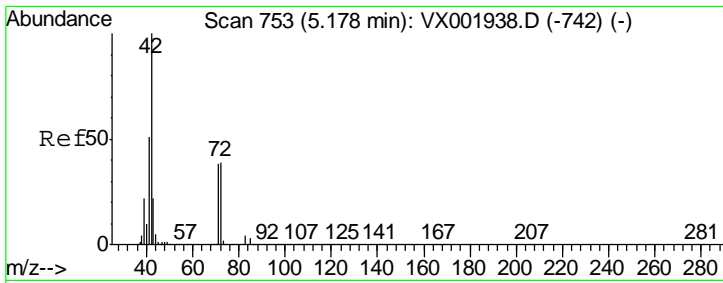
Tgt Ion	Resp	Lower	Upper
43	100		
72	20.5	17.9	26.9



#28
 Bromochloromethane
 Concen: Below Cal
 RT: 5.01 min Scan# 726
 Delta R.T. -0.01 min
 Lab File: VX001997.D
 Acq: 26 May 2018 01:03

Tgt Ion	Resp	Lower	Upper
49	100		
129	0.0	0.0	3.8
130	0.0	59.4	89.2#

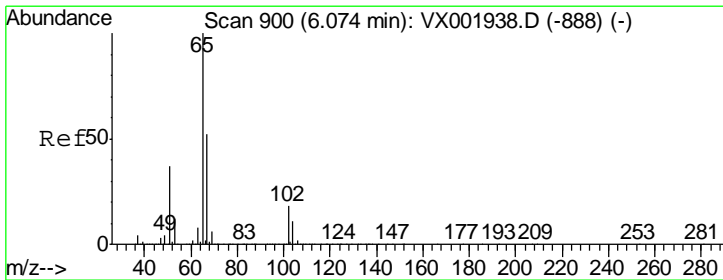
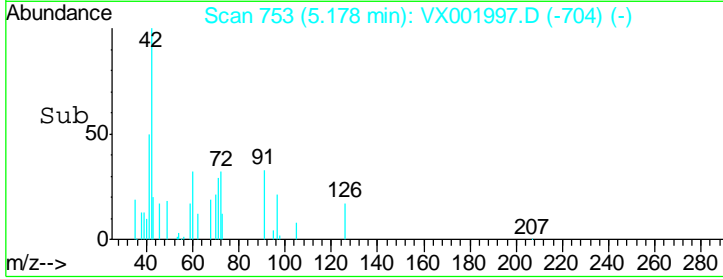
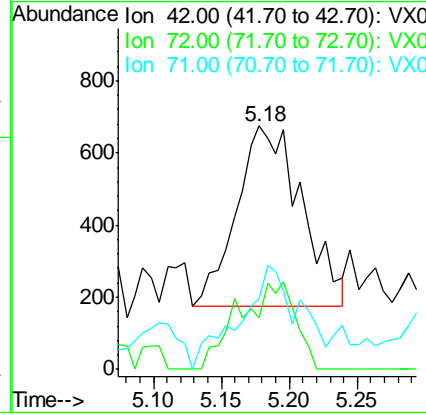
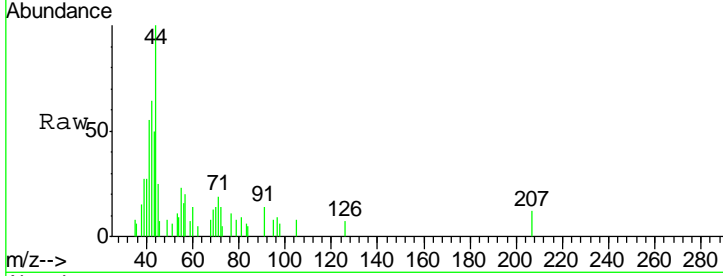




#29
 Tetrahydrofuran
 Concen: 0.69 ug/l
 RT: 5.18 min Scan# 753
 Delta R.T. -0.00 min
 Lab File: VX001997.D
 Acq: 26 May 2018 01:03

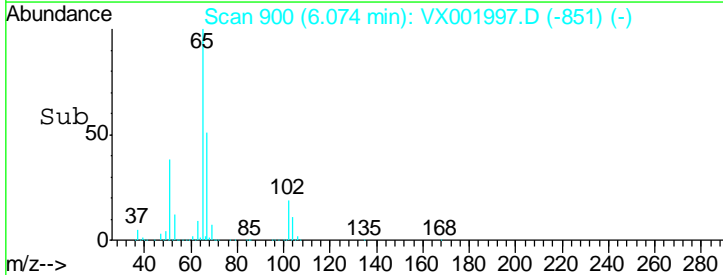
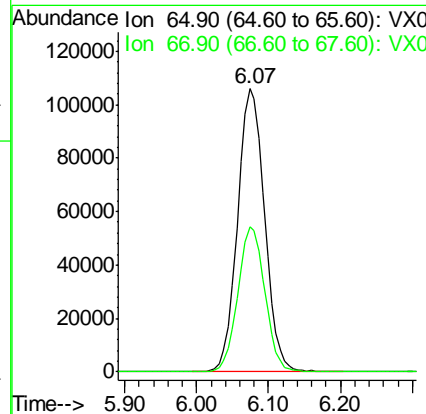
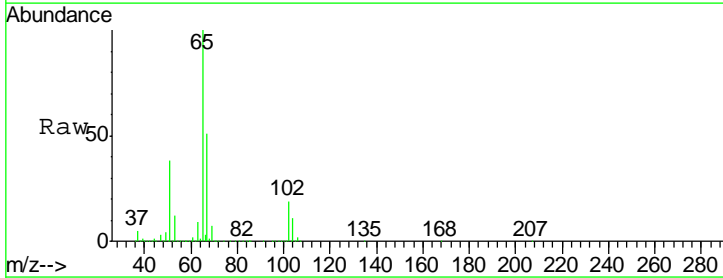
Instrument : MSVOA_X
 ClientSampled : PB109661ZHE#05

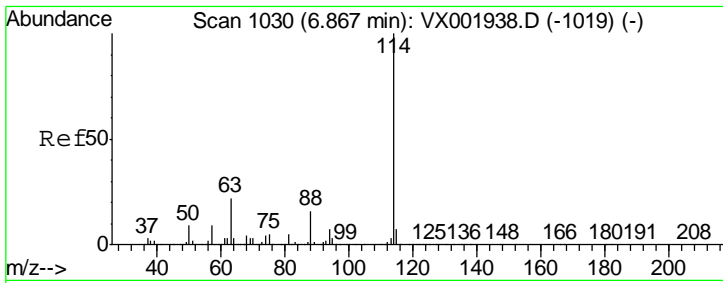
Tgt Ion	Resp	Lower	Upper
42	1651		
72	22.9	31.4	47.0#
71	53.7	29.5	44.3#



#33
 1,2-Dichloroethane-d4
 Concen: 52.87 ug/l
 RT: 6.07 min Scan# 900
 Delta R.T. -0.00 min
 Lab File: VX001997.D
 Acq: 26 May 2018 01:03

Tgt Ion	Resp	Lower	Upper
65	276721		
67	51.1	0.0	104.0

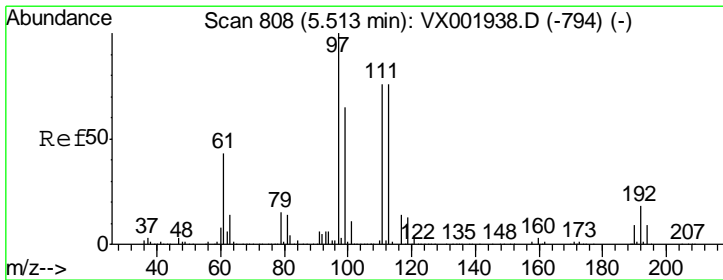
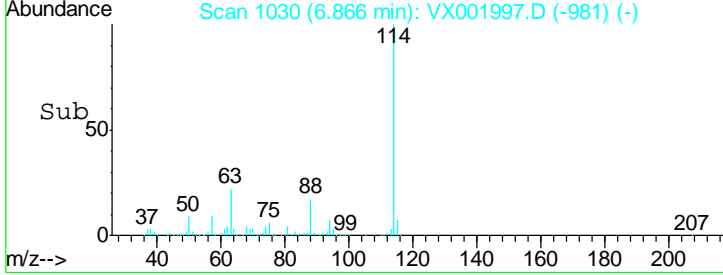
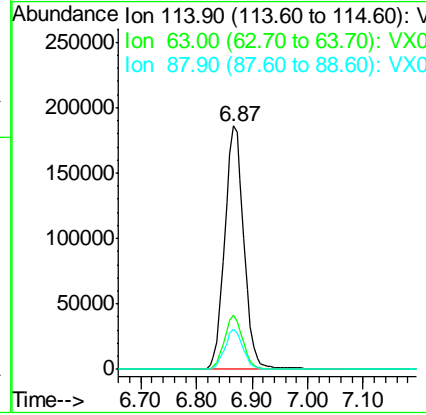
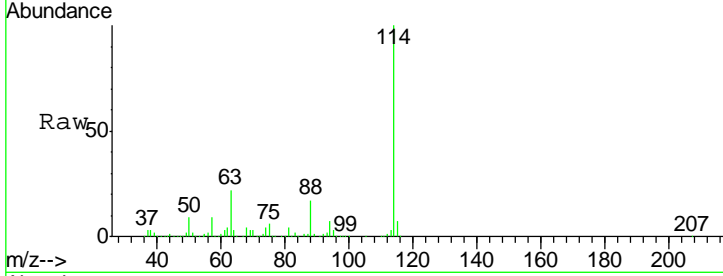




#34
 1,4-Difluorobenzene
 Concen: 50.00 ug/l
 RT: 6.87 min Scan# 1030
 Delta R.T. -0.00 min
 Lab File: VX001997.D
 Acq: 26 May 2018 01:03

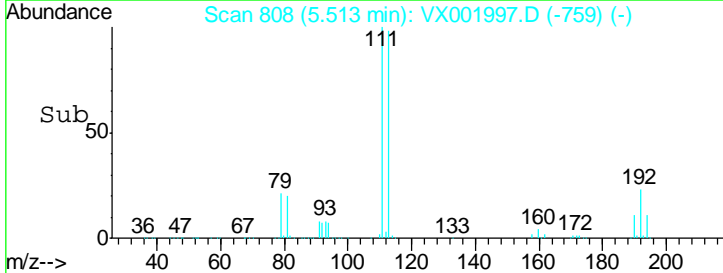
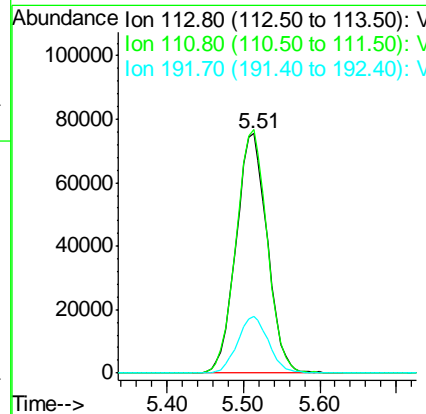
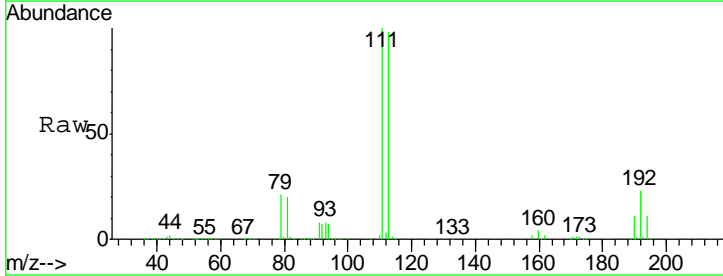
Instrument : MSVOA_X
 ClientSampleId : PB109661ZHE#05

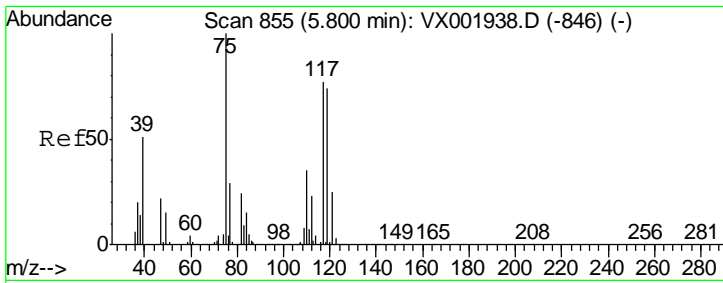
Tgt Ion	Resp	Lower	Upper
114	100		
63	22.2	0.0	43.2
88	16.6	0.0	31.6



#35
 Dibromofluoromethane
 Concen: 47.88 ug/l
 RT: 5.51 min Scan# 808
 Delta R.T. -0.00 min
 Lab File: VX001997.D
 Acq: 26 May 2018 01:03

Tgt Ion	Resp	Lower	Upper
113	100		
111	101.4	82.0	123.0
192	23.6	18.9	28.3

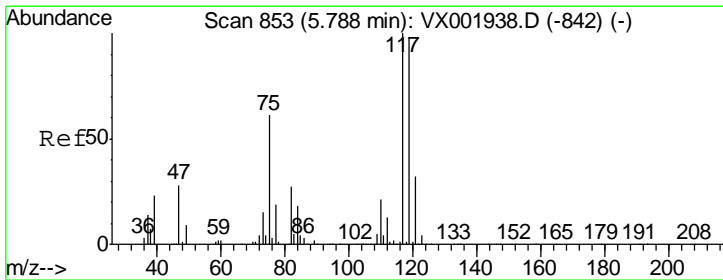
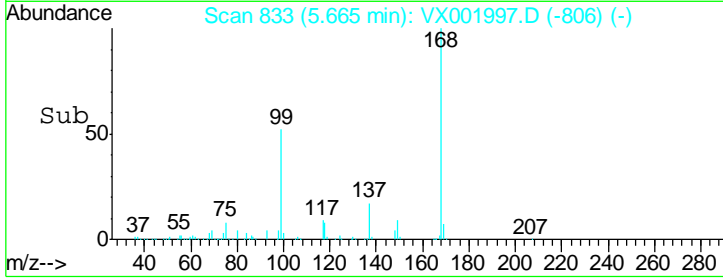
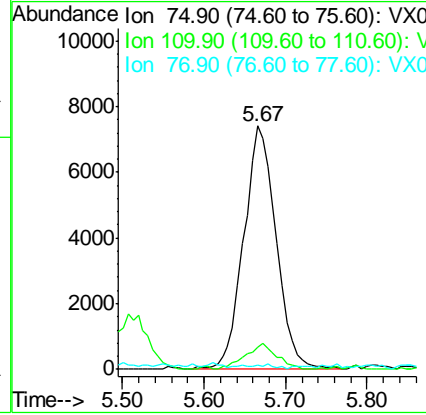
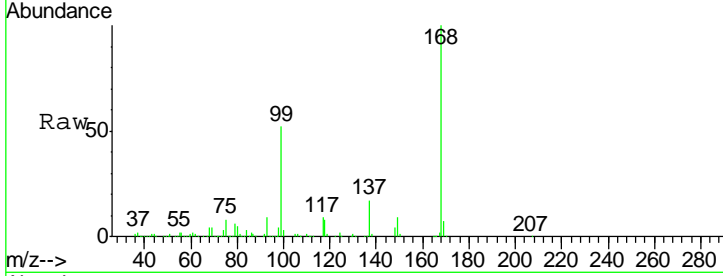




#36
 1,1-Dichloropropene
 Concen: 3.32 ug/l
 RT: 5.67 min Scan# 833
 Delta R.T. -0.13 min
 Lab File: VX001997.D
 Acq: 26 May 2018 01:03

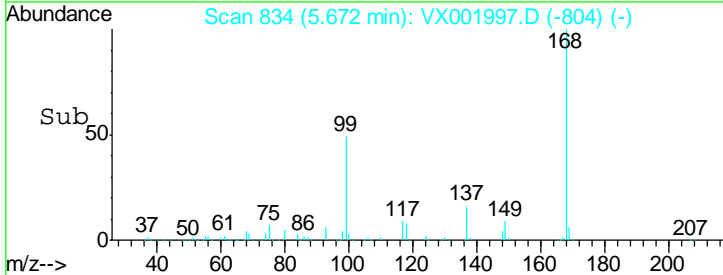
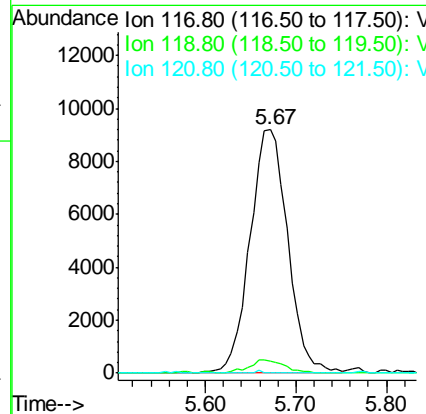
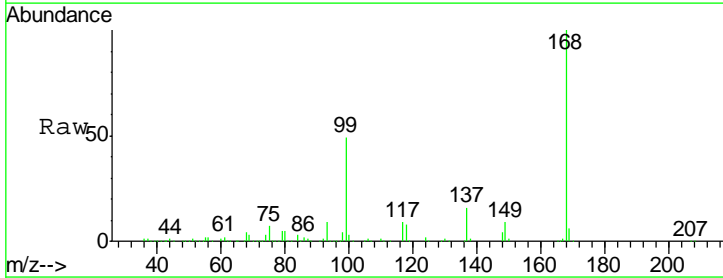
Instrument : MSVOA_X
 ClientSampled : PB109661ZHE#05

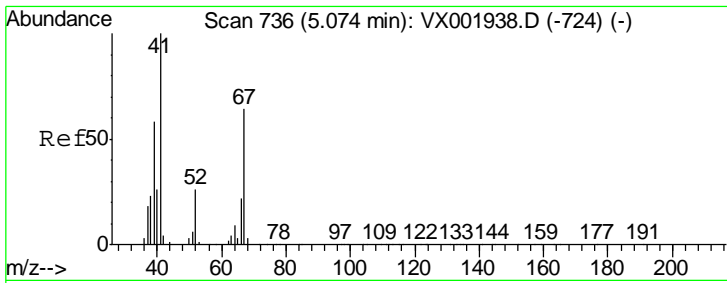
Tgt Ion	Resp	Lower	Upper
75	100		
110	10.3	17.4	52.2#
77	1.1	24.4	36.6#



#38
 Carbon Tetrachloride
 Concen: 3.68 ug/l
 RT: 5.67 min Scan# 834
 Delta R.T. -0.12 min
 Lab File: VX001997.D
 Acq: 26 May 2018 01:03

Tgt Ion	Resp	Lower	Upper
117	100		
119	4.8	78.5	117.7#
121	0.0	25.5	38.3#



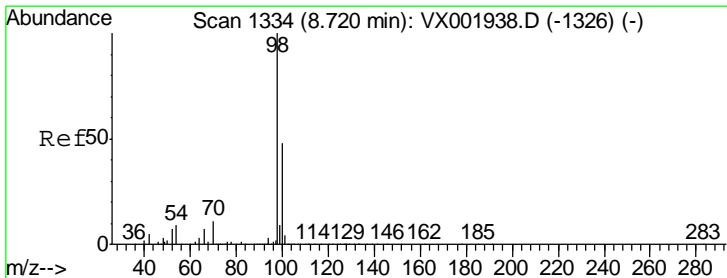
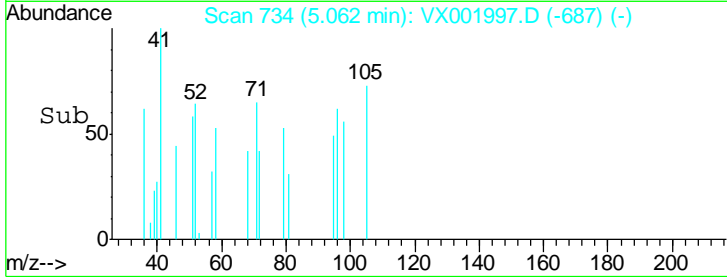
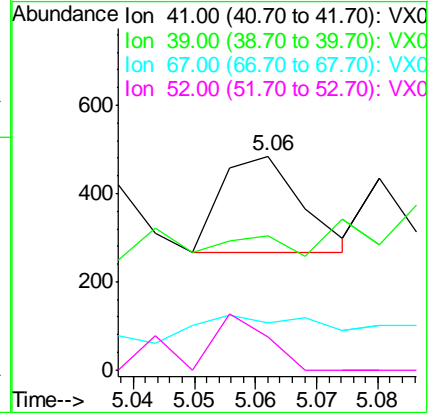
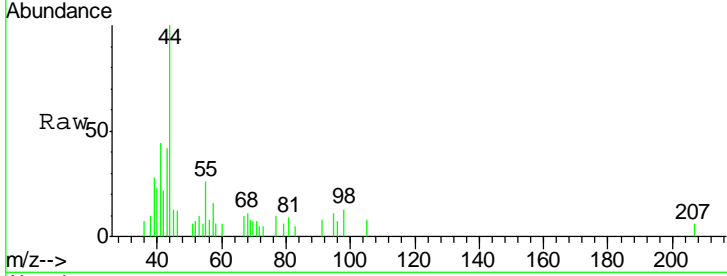


#41
 Methacrylonitrile
 Concen: Below Cal
 RT: 5.06 min Scan# 734
 Delta R.T. -0.01 min
 Lab File: VX001997.D
 Acq: 26 May 2018 01:03

Instrument :
 MSVOA_X
 ClientSampled :
 PB109661ZHE#05

Tgt Ion: 41 Resp: 198

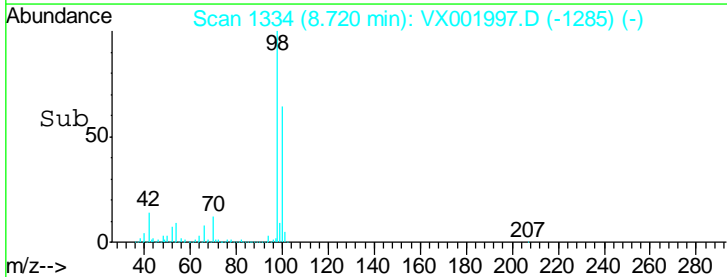
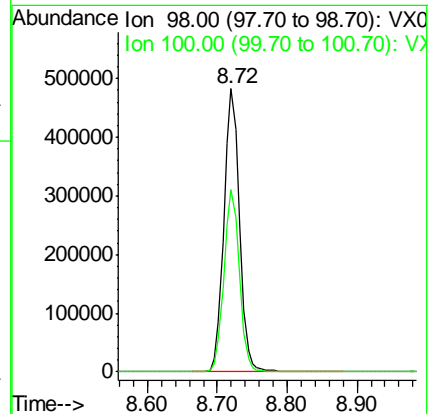
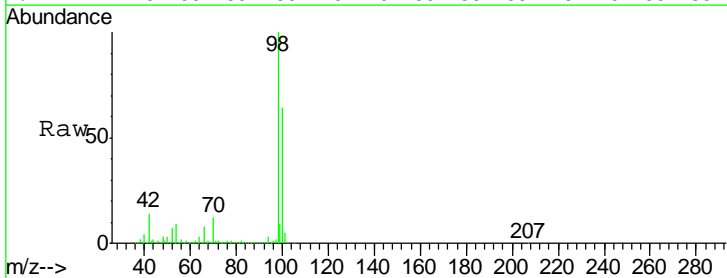
Ion	Ratio	Lower	Upper
41	100		
39	0.0	46.0	69.0#
67	73.7	50.6	75.8
52	51.5	21.9	32.9#

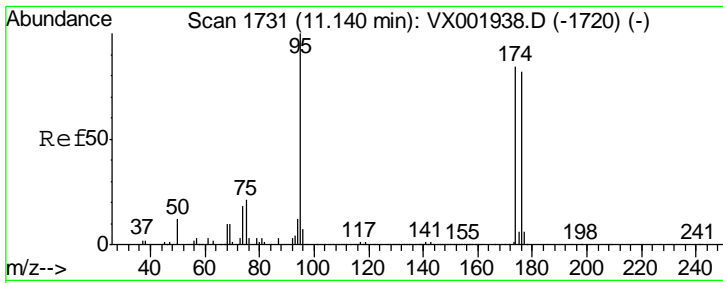


#50
 Toluene-d8
 Concen: 46.63 ug/l
 RT: 8.72 min Scan# 1334
 Delta R.T. 0.00 min
 Lab File: VX001997.D
 Acq: 26 May 2018 01:03

Tgt Ion: 98 Resp: 750264

Ion	Ratio	Lower	Upper
98	100		
100	63.8	51.5	77.3

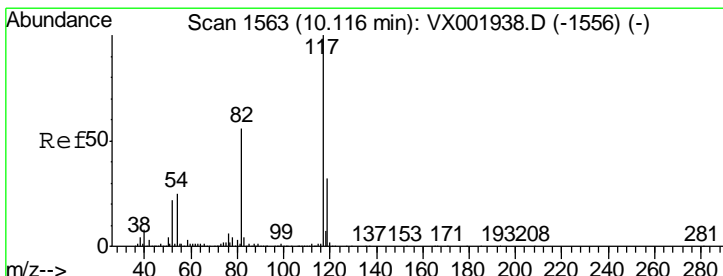
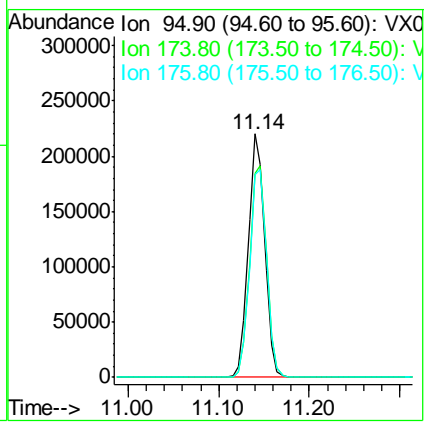
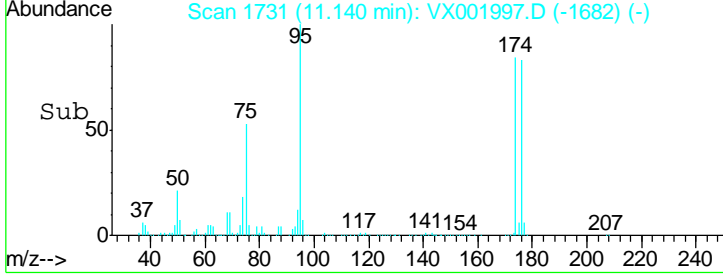
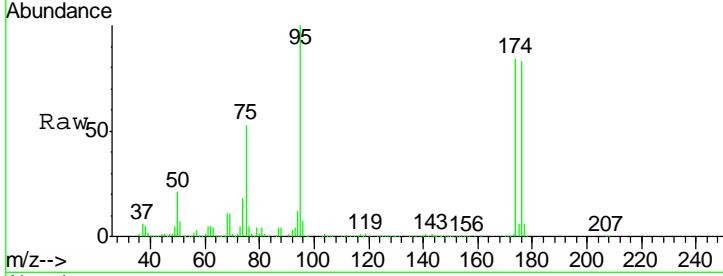




#62
 4-Bromofluorobenzene
 Concen: 43.83 ug/l
 RT: 11.14 min Scan# 1731
 Delta R.T. 0.00 min
 Lab File: VX001997.D
 Acq: 26 May 2018 01:03

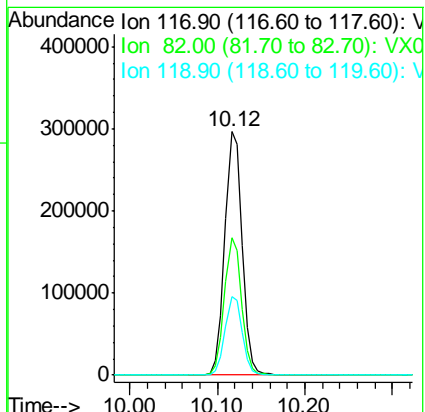
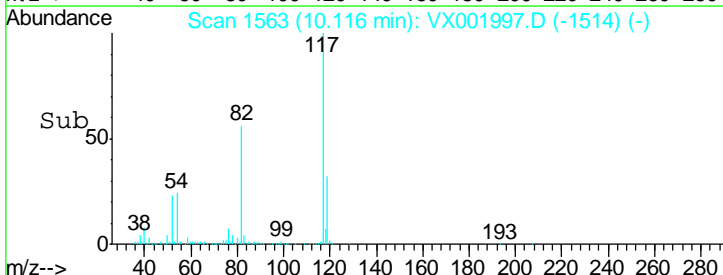
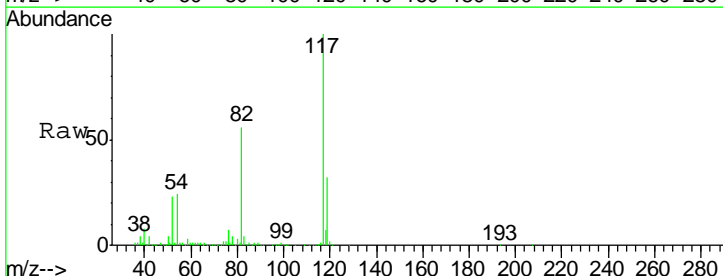
Instrument : MSVOA_X
 ClientSampleId : PB109661ZHE#05

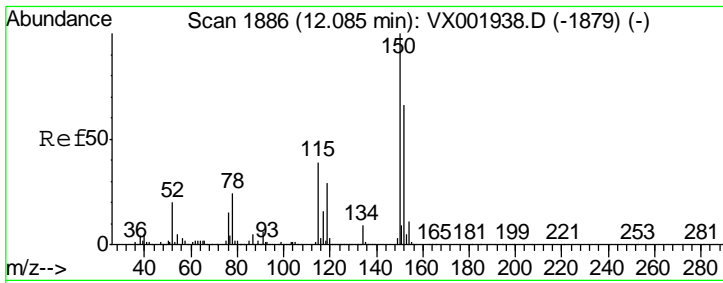
Tgt Ion	Resp	Lower	Upper
95	275919		
174	90.2	0.0	178.8
176	89.0	0.0	175.6



#63
 Chlorobenzene-d5
 Concen: 50.00 ug/l
 RT: 10.12 min Scan# 1563
 Delta R.T. -0.00 min
 Lab File: VX001997.D
 Acq: 26 May 2018 01:03

Tgt Ion	Resp	Lower	Upper
117	404791		
82	56.2	44.8	67.2
119	32.0	25.5	38.3

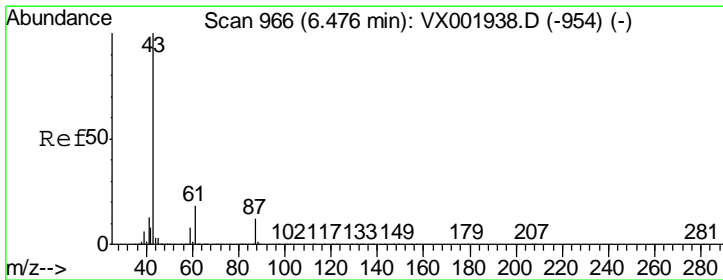
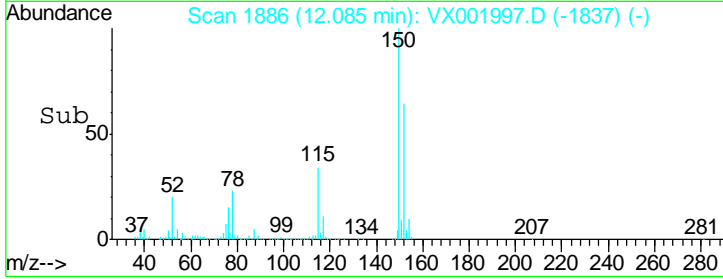
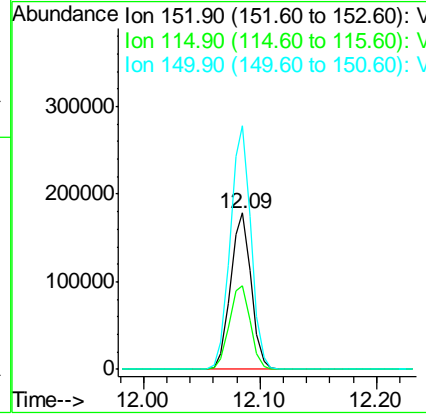
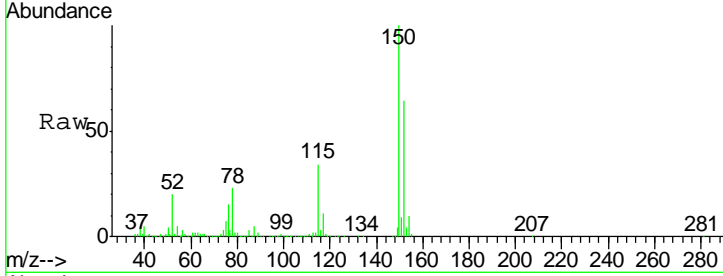




#72
 1,4-Dichlorobenzene-d4
 Concen: 50.00 ug/l
 RT: 12.09 min Scan# 1886
 Delta R.T. -0.00 min
 Lab File: VX001997.D
 Acq: 26 May 2018 01:03

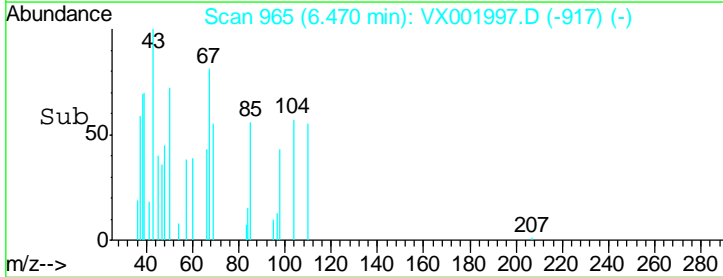
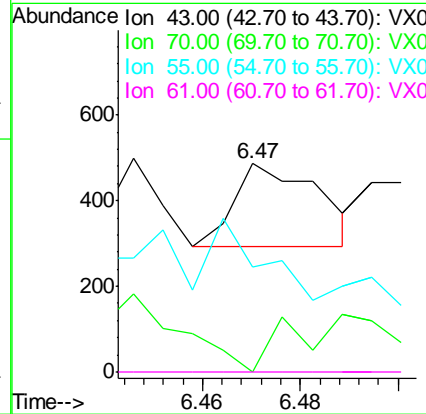
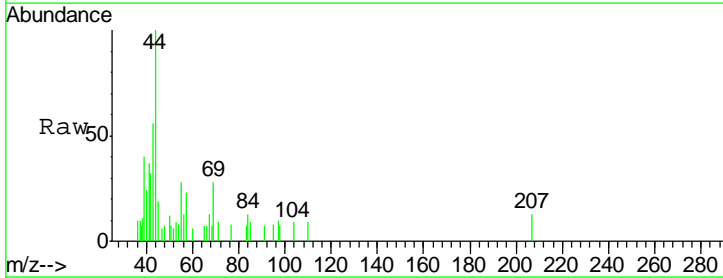
Instrument :
 MSVOA_X
 ClientSampled :
 PB109661ZHE#05

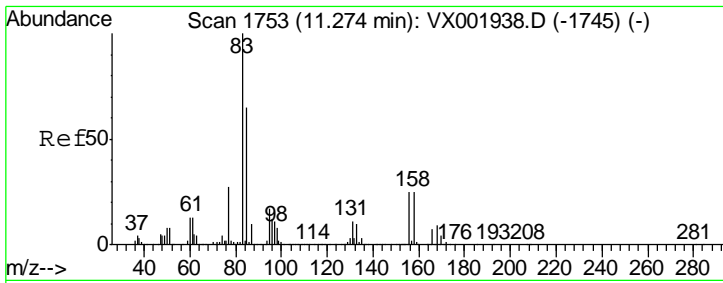
Tgt Ion	Resp	Lower	Upper
152	100		
115	55.0	42.3	126.8
150	156.8	0.0	351.0



#74
 N-amyl acetate
 Concen: Below Cal
 RT: 6.47 min Scan# 965
 Delta R.T. -0.01 min
 Lab File: VX001997.D
 Acq: 26 May 2018 01:03

Tgt Ion	Resp	Lower	Upper
43	100		
70	0.0	0.1	0.1#
55	44.0	0.1	0.1#
61	0.0	14.5	21.7#

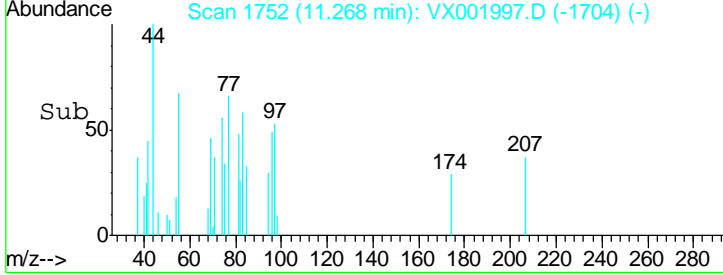
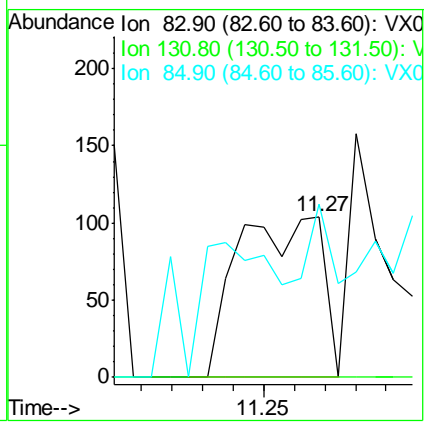
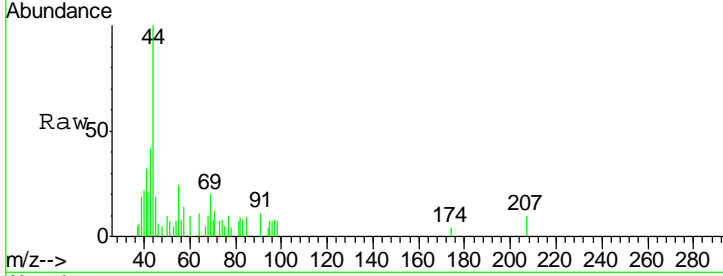




#75
 1,1,2,2-Tetrachloroethane
 Concen: Below Cal
 RT: 11.27 min Scan# 1752
 Delta R.T. -0.01 min
 Lab File: VX001997.D
 Acq: 26 May 2018 01:03

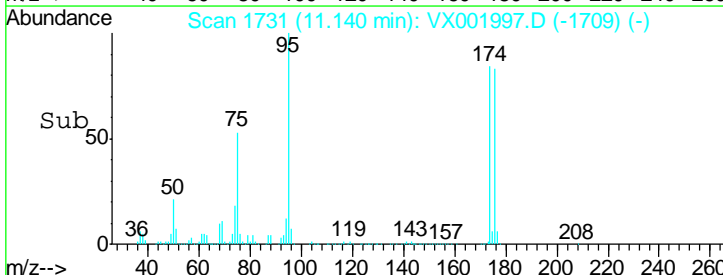
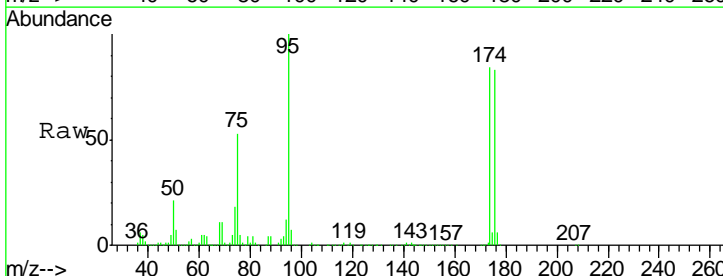
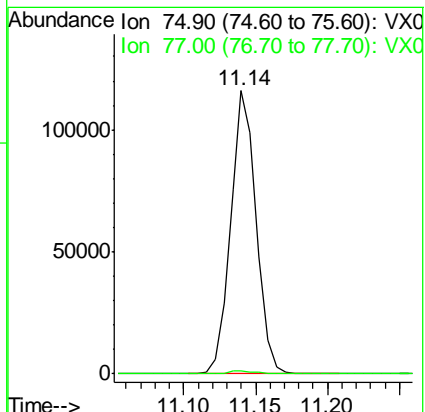
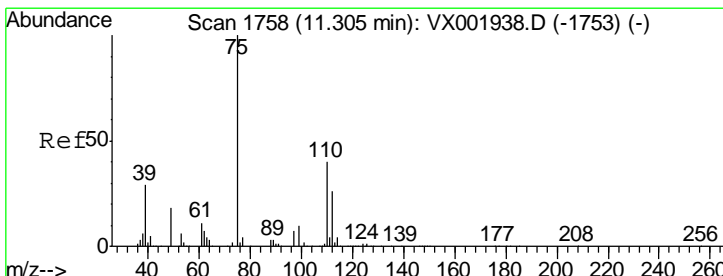
Instrument : MSVOA_X
 ClientSampleId : PB109661ZHE#05

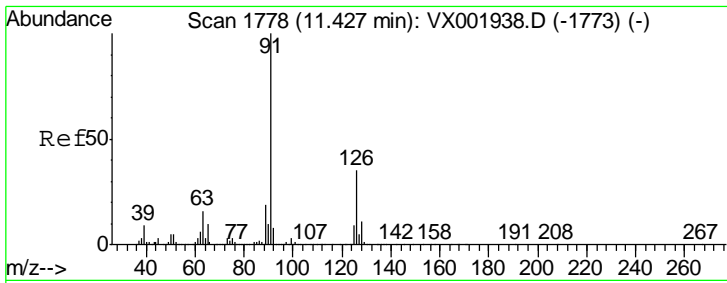
Tgt Ion	Resp	Lower	Upper
83	100		
131	0.0	5.7	17.0#
85	19.6	32.6	97.7#



#76
 1,2,3-Trichloropropane
 Concen: 27.57 ug/l
 RT: 11.14 min Scan# 1731
 Delta R.T. -0.16 min
 Lab File: VX001997.D
 Acq: 26 May 2018 01:03

Tgt Ion	Resp	Lower	Upper
75	100		
77	1.3	22.8	68.3#

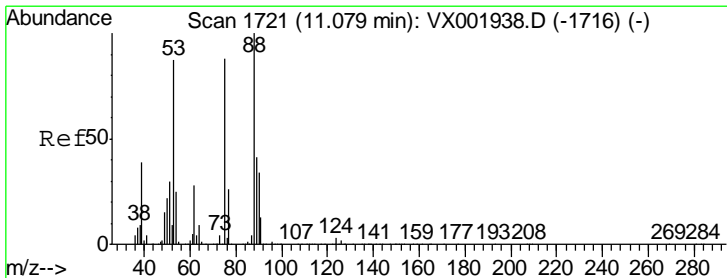
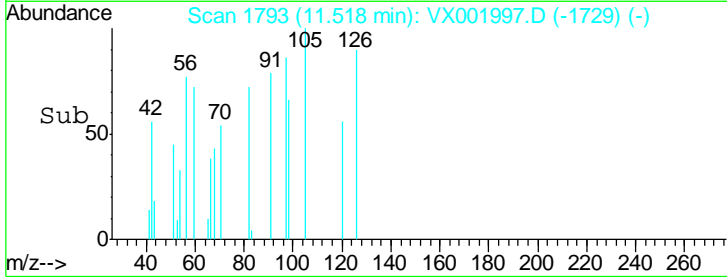
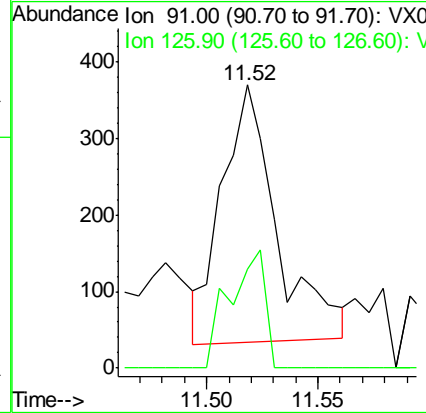
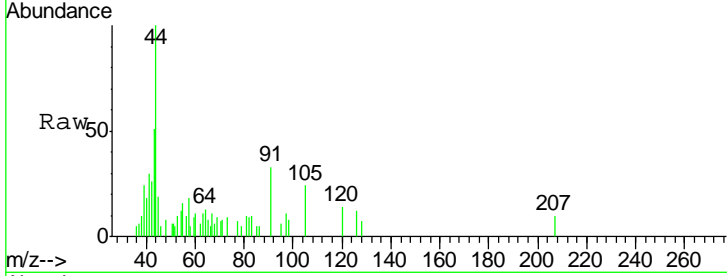




#79
 2-Chlorotoluene
 Concen: Below Cal
 RT: 11.52 min Scan# 1793
 Delta R.T. 0.09 min
 Lab File: VX001997.D
 Acq: 26 May 2018 01:03

Instrument : MSVOA_X
 ClientSampled : PB109661ZHE#05

Tgt Ion: 91 Resp: 578
 Ion Ratio Lower Upper
 91 100
 126 29.9 17.4 52.2



#81
 trans-1,4-Dichloro-2-butene
 Concen: 66.27 ug/l
 RT: 11.14 min Scan# 1731
 Delta R.T. 0.06 min
 Lab File: VX001997.D
 Acq: 26 May 2018 01:03

Tgt Ion: 75 Resp: 143777
 Ion Ratio Lower Upper
 75 100
 53 0.2 78.0 117.0#
 89 0.0 39.4 59.2#

