

Data Path : W:\HPCHEM1\MSVOA X\DATA\VX052518\  
 Data File : VX001988.D  
 Acq On : 25 May 2018 20:10  
 Operator : JC/MD  
 Sample : J3064-04  
 Misc : 5.0mL/MSVOA X/WATER  
 ALS Vial : 23 Sample Multiplier: 1

Instrument :  
 MSVOA\_X  
 ClientSampled :  
 MW-02

Quant Time: May 26 03:54:03 2018  
 Quant Method : W:\HPCHEM1\MSVOA\_X\METHOD\82X052418W.M  
 Quant Title : SW846 8260  
 QLast Update : Thu May 24 13:09:03 2018  
 Response via : Initial Calibration

Internal Standards	R.T.	QIon	Response	Conc	Units	Dev(Min)
1) Pentafluorobenzene	5.67	168	307424	50.00	ug/l	0.00
34) 1,4-Difluorobenzene	6.87	114	474558	50.00	ug/l	0.00
63) Chlorobenzene-d5	10.12	117	433424	50.00	ug/l	0.00
72) 1,4-Dichlorobenzene-d4	12.09	152	241083	50.00	ug/l	0.00

## System Monitoring Compounds

33) 1,2-Dichloroethane-d4	6.07	65	285381	51.93	ug/l	0.00
Spiked Amount	50.000		Recovery	=	103.86%	
35) Dibromofluoromethane	5.51	113	222913	46.97	ug/l	0.00
Spiked Amount	50.000		Recovery	=	93.94%	
50) Toluene-d8	8.72	98	810935	47.20	ug/l	0.00
Spiked Amount	50.000		Recovery	=	94.40%	
62) 4-Bromofluorobenzene	11.14	95	299882	44.61	ug/l	0.00
Spiked Amount	50.000		Recovery	=	89.22%	

## Target Compounds

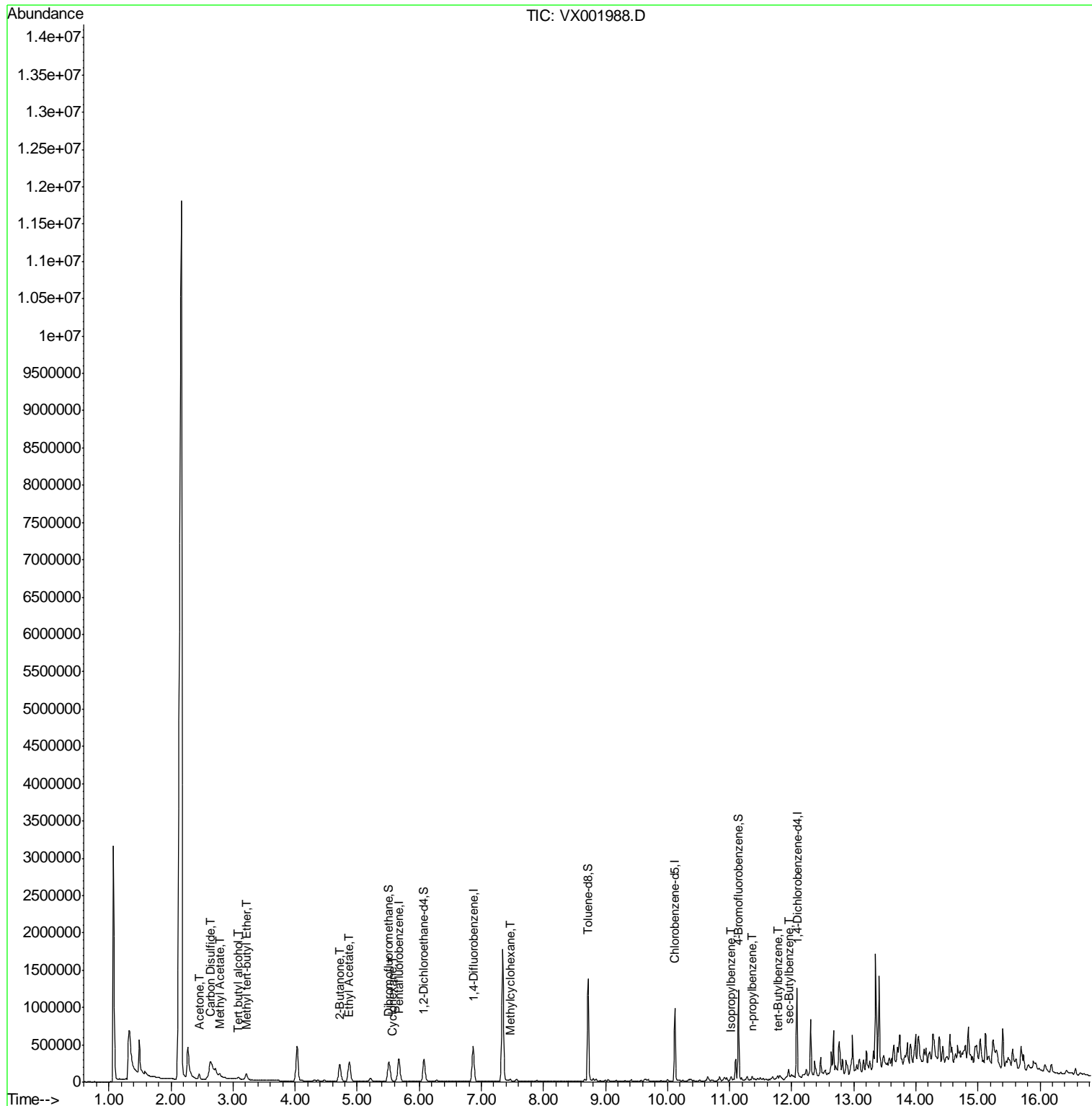
						Qvalue
11) Tert butyl alcohol	3.09	59	30270	28.062	ug/l	96
16) Acetone	2.45	43	75737	35.712	ug/l	99
17) Carbon Disulfide	2.64	76	1179439	114.367	ug/l	99
18) Methyl Acetate	2.79	43	45354	7.921	ug/l	99
19) Methyl tert-butyl Ether	3.21	73	81754	6.066	ug/l	99
25) 2-Butanone	4.71	43	427263	109.921	ug/l	98
31) Cyclohexane	5.57	56	3577	0.472	ug/l #	88
37) Ethyl Acetate	4.87	43	484747	56.329	ug/l	99
39) Methylcyclohexane	7.47	83	9068	1.118	ug/l	90
73) Isopropylbenzene	11.02	105	22979	1.126	ug/l	99
78) n-propylbenzene	11.37	91	27722	1.212	ug/l	95
83) tert-Butylbenzene	11.77	119	13529	0.790	ug/l	84
85) sec-Butylbenzene	11.95	105	28098	1.365	ug/l	88

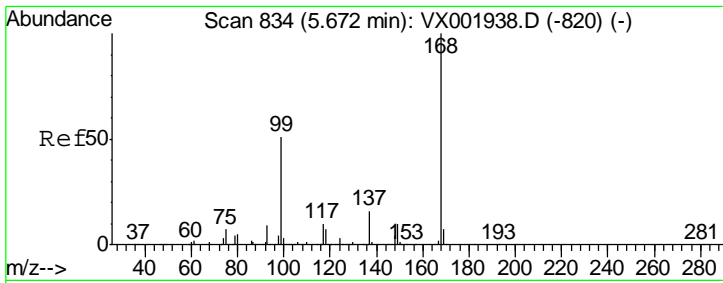
(#) = qualifier out of range (m) = manual integration (+) = signals summed

Data Path : W:\HPCHEM1\MSVOA X\DATA\VX052518\  
 Data File : VX001988.D  
 Acq On : 25 May 2018 20:10  
 Operator : JC/MD  
 Sample : J3064-04  
 Misc : 5.0mL/MSVOA X/WATER  
 ALS Vial : 23 Sample Multiplier: 1

Instrument :  
 MSVOA\_X  
 Client Sampled :  
 MW-02

Quant Time: May 26 03:54:03 2018  
 Quant Method : W:\HPCHEM1\MSVOA\_X\METHOD\82X052418W.M  
 Quant Title : SW846 8260  
 QLast Update : Thu May 24 13:09:03 2018  
 Response via : Initial Calibration

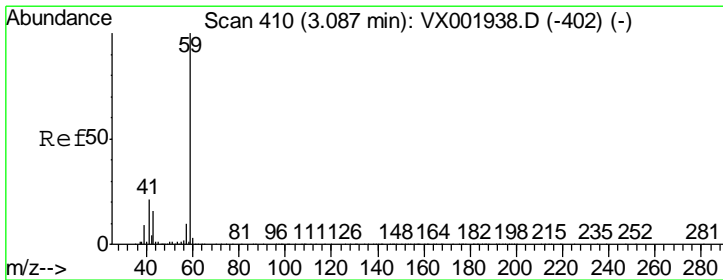
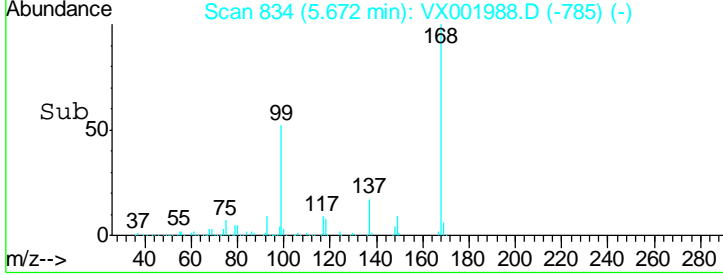
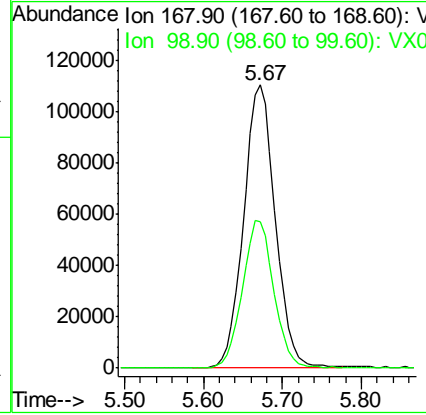
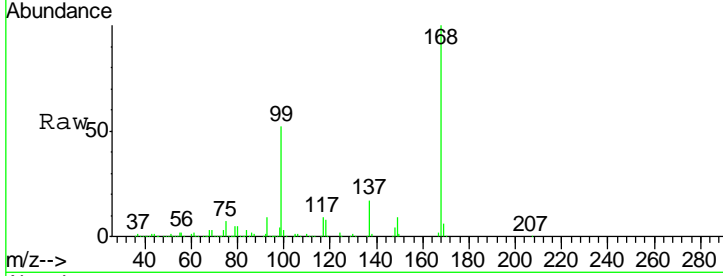




#1  
 Pentafluorobenzene  
 Concen: 50.000 ug/l  
 RT: 5.67 min Scan# 834  
 Delta R.T. 0.00 min  
 Lab File: VX001988.D  
 Acq: 25 May 2018 20:10

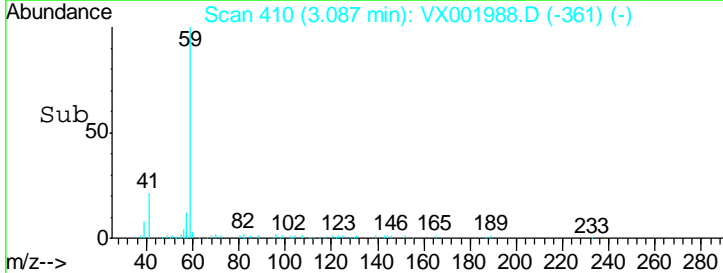
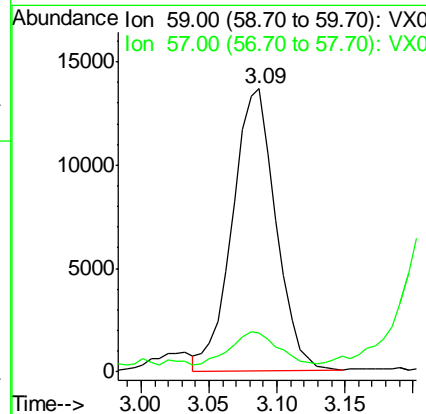
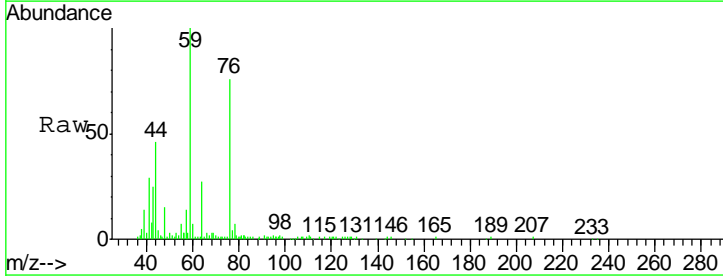
Instrument :  
 MSVOA\_X  
 ClientSampled :  
 MW-02

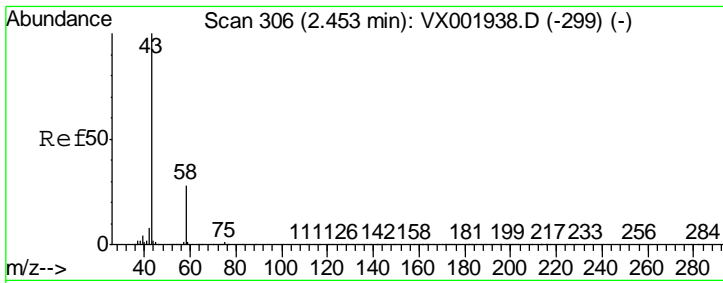
Tgt Ion: 168 Resp: 307424  
 Ion Ratio Lower Upper  
 168 100  
 99 51.6 41.0 61.4



#11  
 Tert butyl alcohol  
 Concen: 28.062 ug/l  
 RT: 3.09 min Scan# 410  
 Delta R.T. 0.00 min  
 Lab File: VX001988.D  
 Acq: 25 May 2018 20:10

Tgt Ion: 59 Resp: 30270  
 Ion Ratio Lower Upper  
 59 100  
 57 12.5 8.9 13.3

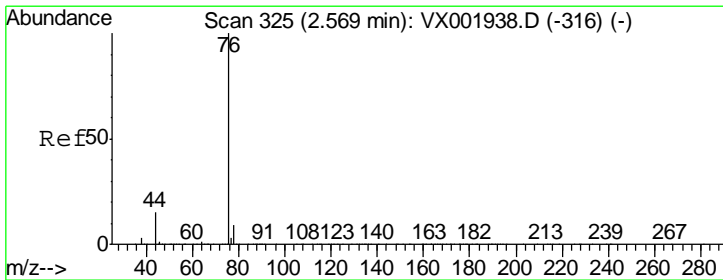
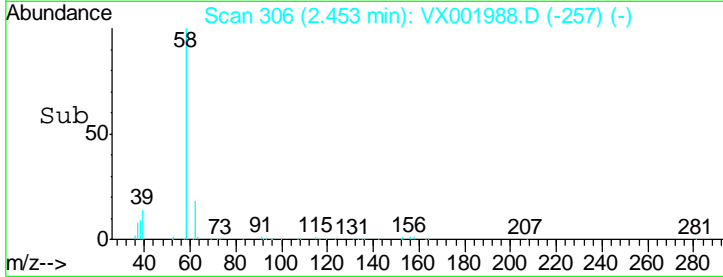
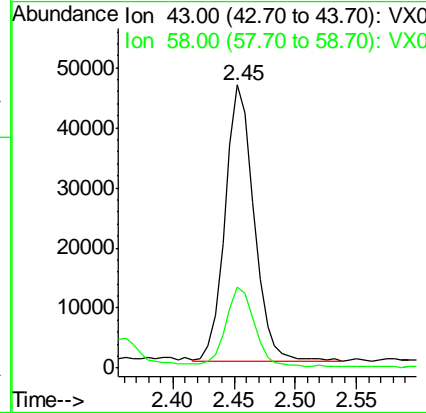
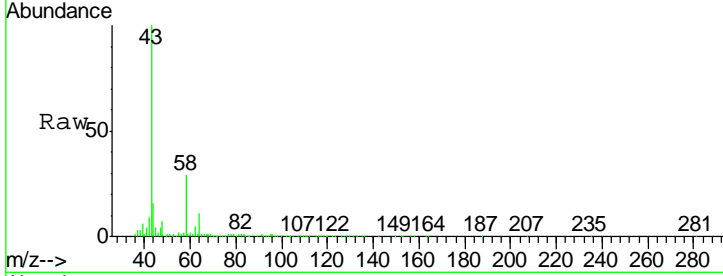




#16  
 Acetone  
 Concen: 35.712 ug/l  
 RT: 2.45 min Scan# 306  
 Delta R.T. 0.00 min  
 Lab File: VX001988.D  
 Acq: 25 May 2018 20:10

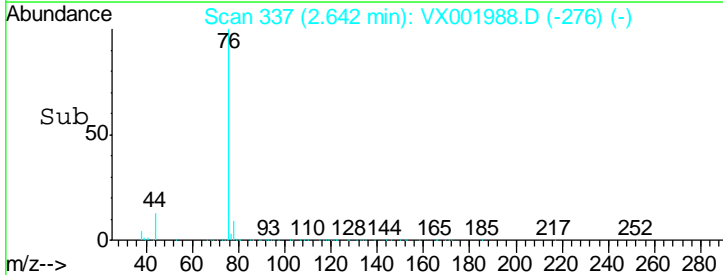
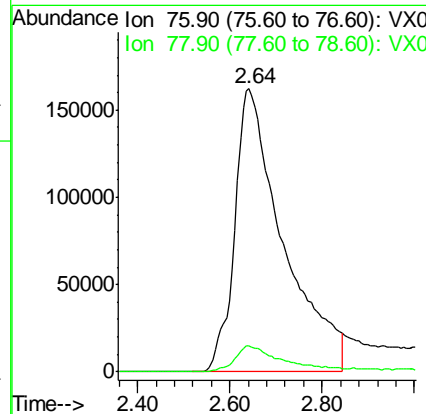
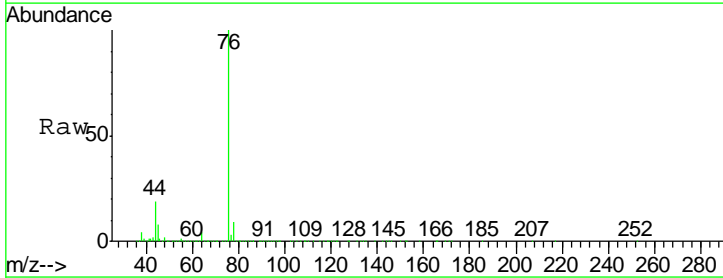
Instrument :  
 MSVOA\_X  
 ClientSampled :  
 MW-02

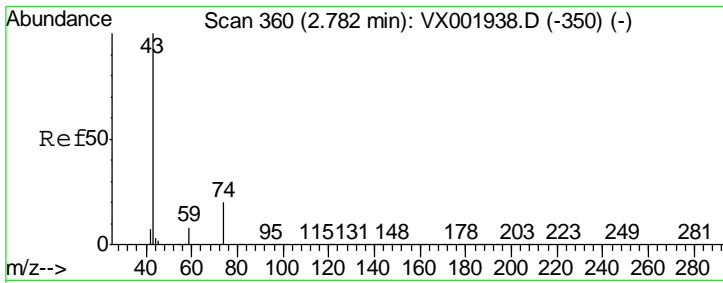
Tgt Ion	Resp	Lower	Upper
43	100		
58	28.5	22.3	33.5



#17  
 Carbon Disulfide  
 Concen: 114.367 ug/l  
 RT: 2.64 min Scan# 337  
 Delta R.T. 0.07 min  
 Lab File: VX001988.D  
 Acq: 25 May 2018 20:10

Tgt Ion	Resp	Lower	Upper
76	100		
78	8.9	7.4	11.2

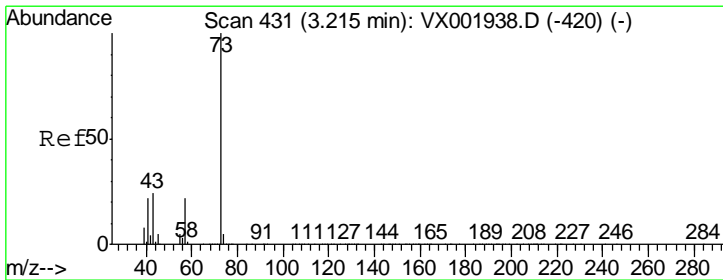
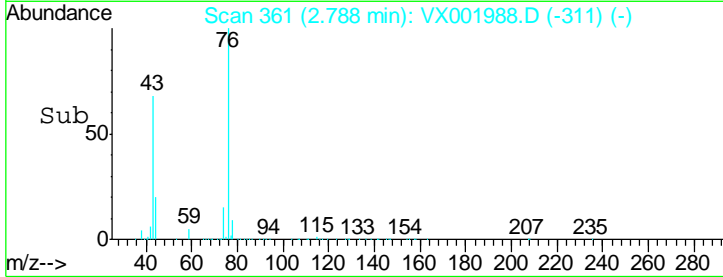
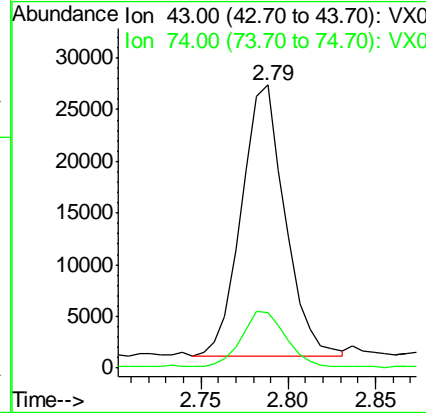
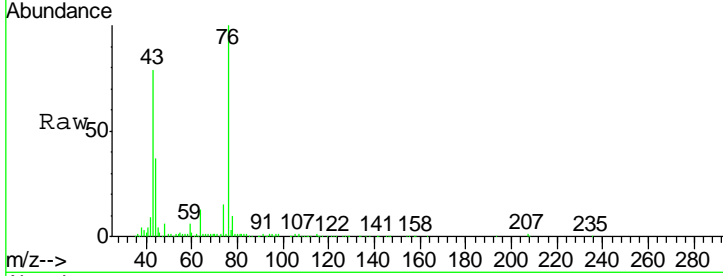




#18  
 Methyl Acetate  
 Concen: 7.921 ug/l  
 RT: 2.79 min Scan# 361  
 Delta R.T. 0.01 min  
 Lab File: VX001988.D  
 Acq: 25 May 2018 20:10

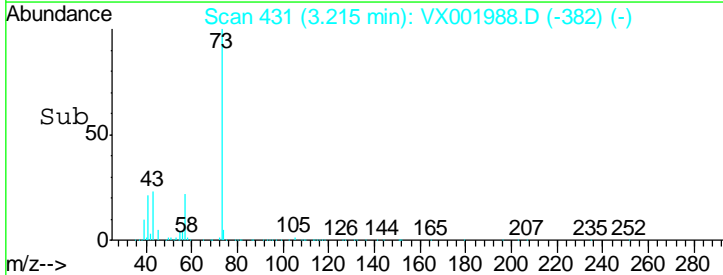
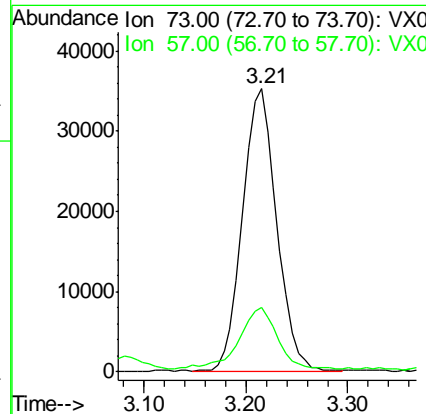
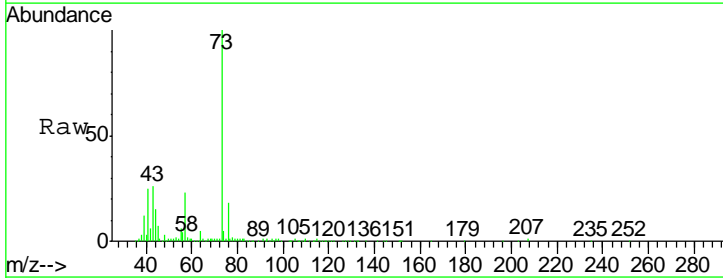
Instrument :  
 MSVOA\_X  
 ClientSampled :  
 MW-02

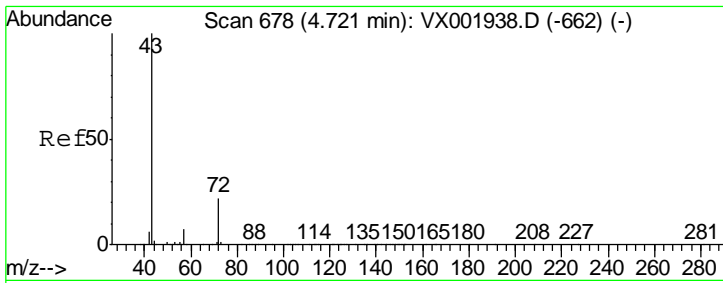
Tgt Ion	Resp	Lower	Upper
43	100		
74	21.5	16.8	25.2



#19  
 Methyl tert-butyl Ether  
 Concen: 6.066 ug/l  
 RT: 3.21 min Scan# 431  
 Delta R.T. 0.00 min  
 Lab File: VX001988.D  
 Acq: 25 May 2018 20:10

Tgt Ion	Resp	Lower	Upper
73	100		
57	22.0	17.4	26.0

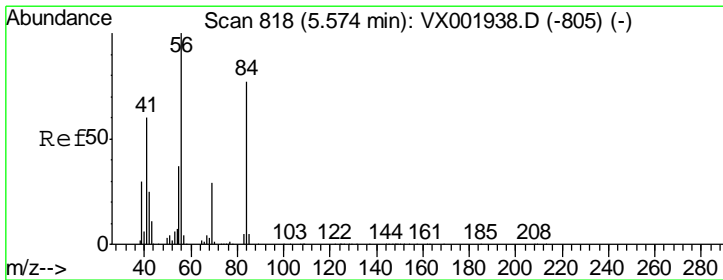
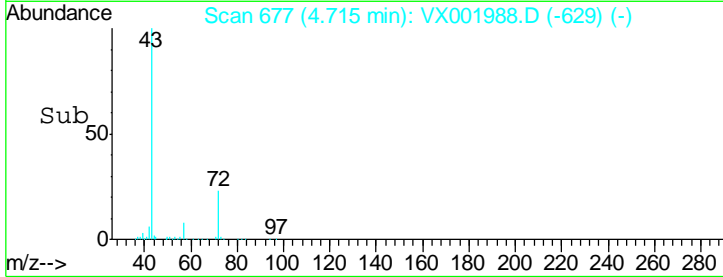
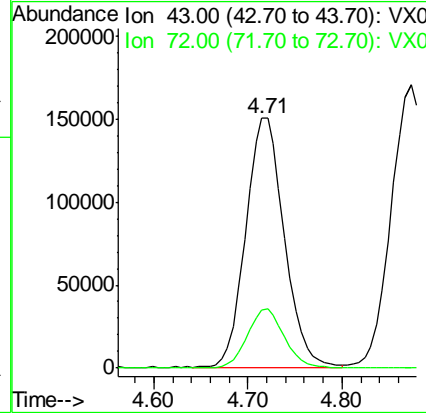
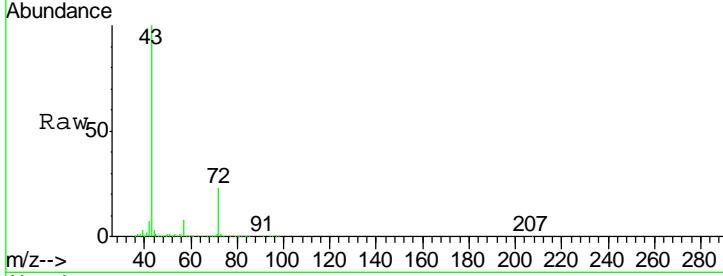




#25  
 2-Butanone  
 Concen: 109.921 ug/l  
 RT: 4.71 min Scan# 677  
 Delta R.T. -0.01 min  
 Lab File: VX001988.D  
 Acq: 25 May 2018 20:10

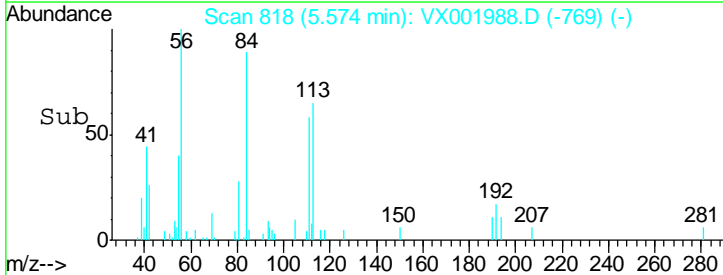
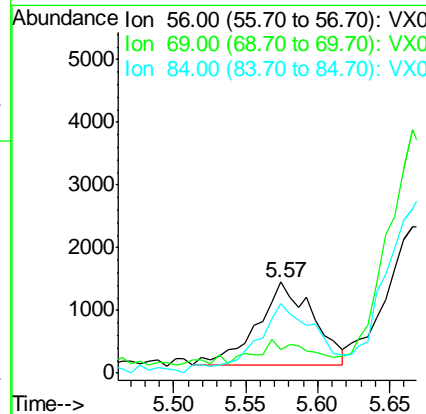
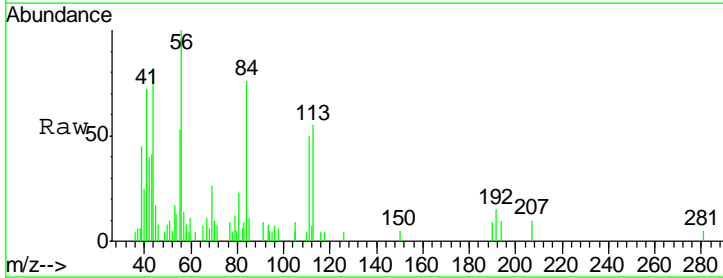
Instrument :  
 MSVOA\_X  
 ClientSampled :  
 MW-02

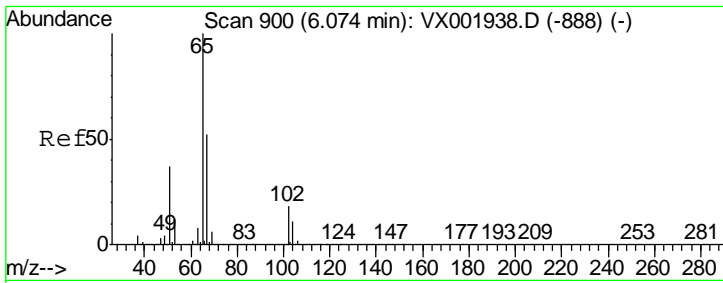
Tgt Ion	Resp	Lower	Upper
43	100		
72	23.2	17.9	26.9



#31  
 Cyclohexane  
 Concen: 0.472 ug/l  
 RT: 5.57 min Scan# 818  
 Delta R.T. 0.00 min  
 Lab File: VX001988.D  
 Acq: 25 May 2018 20:10

Tgt Ion	Resp	Lower	Upper
56	100		
69	12.0	23.1	34.7#
84	74.0	62.0	93.0

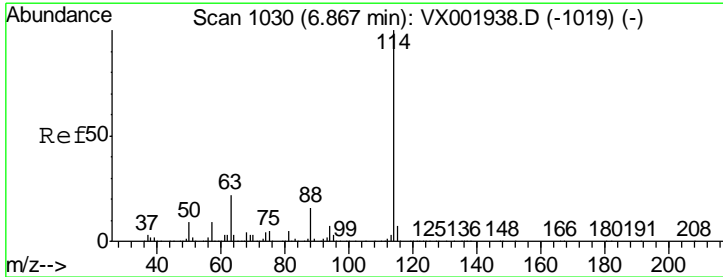
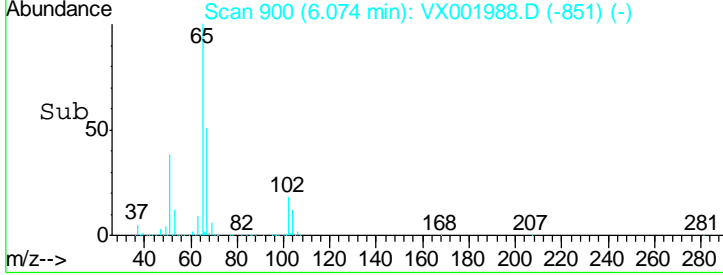
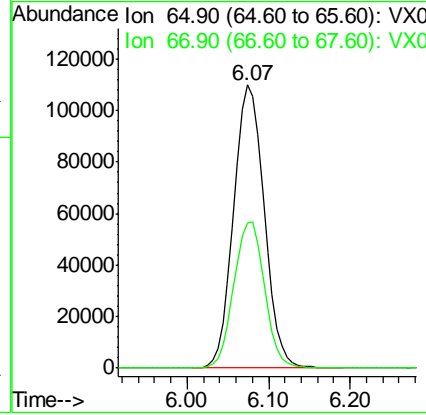
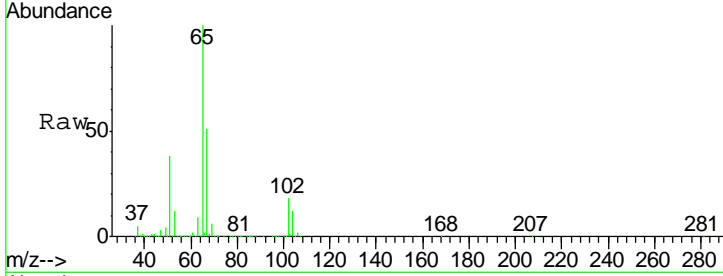




#33  
 1,2-Dichloroethane-d4  
 Concen: 51.933 ug/l  
 RT: 6.07 min Scan# 900  
 Delta R.T. 0.00 min  
 Lab File: VX001988.D  
 Acq: 25 May 2018 20:10

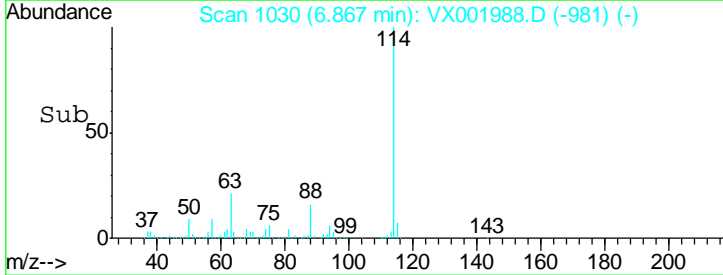
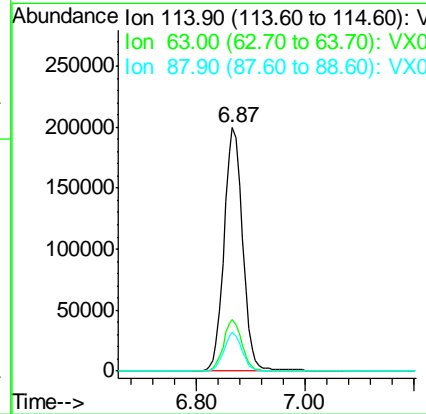
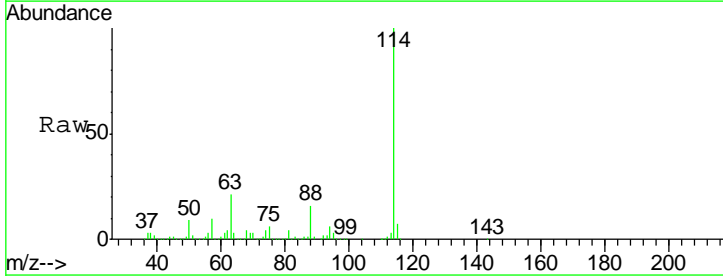
Instrument :  
 MSVOA\_X  
 ClientSampled :  
 MW-02

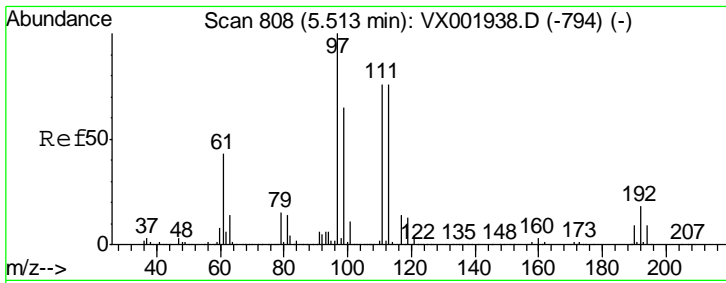
Tgt Ion: 65 Resp: 285381  
 Ion Ratio Lower Upper  
 65 100  
 67 52.0 0.0 104.0



#34  
 1,4-Difluorobenzene  
 Concen: 50.000 ug/l  
 RT: 6.87 min Scan# 1030  
 Delta R.T. 0.00 min  
 Lab File: VX001988.D  
 Acq: 25 May 2018 20:10

Tgt Ion: 114 Resp: 474558  
 Ion Ratio Lower Upper  
 114 100  
 63 21.2 0.0 43.2  
 88 15.8 0.0 31.6

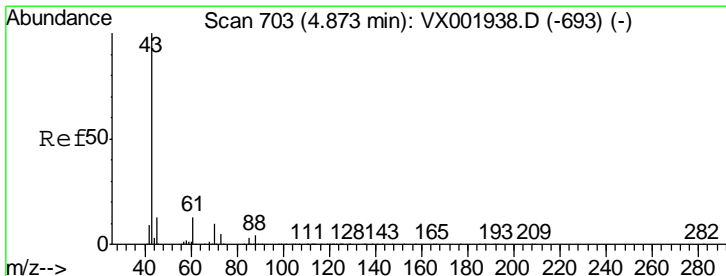
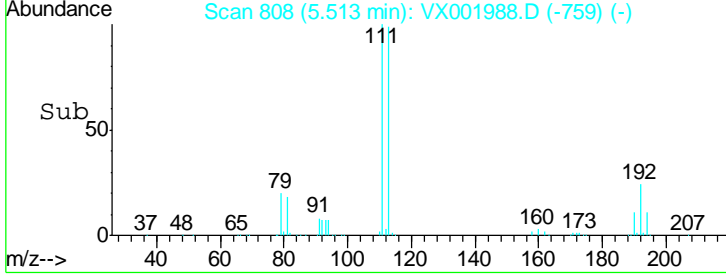
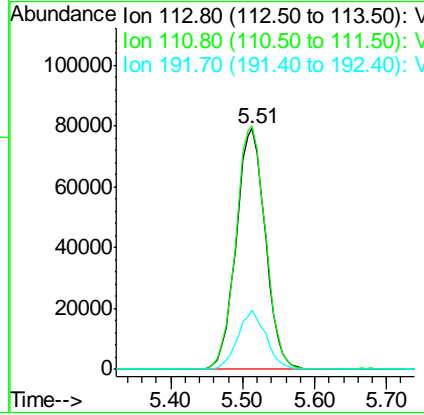
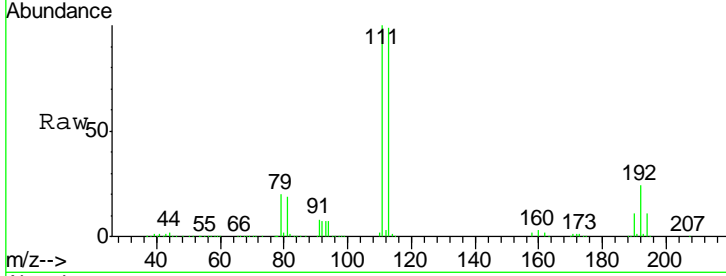




#35  
 Dibromofluoromethane  
 Concen: 46.973 ug/l  
 RT: 5.51 min Scan# 808  
 Delta R.T. 0.00 min  
 Lab File: VX001988.D  
 Acq: 25 May 2018 20:10

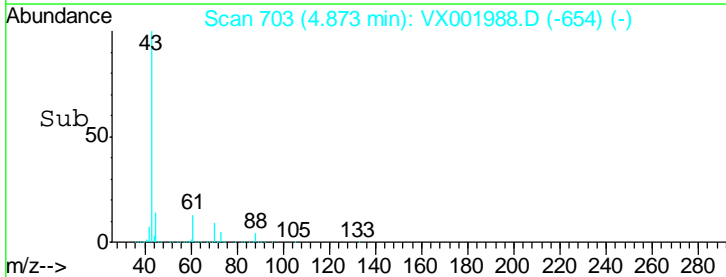
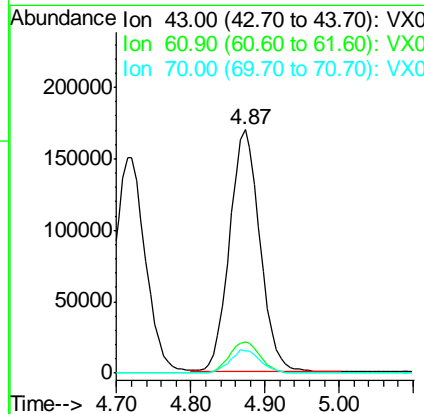
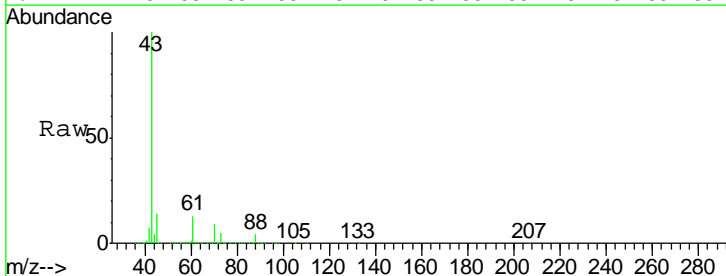
Instrument :  
 MSVOA\_X  
 ClientSampled :  
 MW-02

Tgt Ion	Resp	Lower	Upper
113	100		
111	102.2	82.0	123.0
192	23.6	18.9	28.3

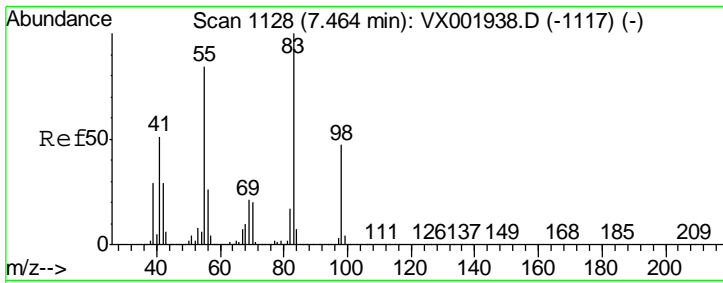


#37  
 Ethyl Acetate  
 Concen: 56.329 ug/l  
 RT: 4.87 min Scan# 703  
 Delta R.T. 0.00 min  
 Lab File: VX001988.D  
 Acq: 25 May 2018 20:10

Tgt Ion	Resp	Lower	Upper
43	100		
61	12.9	10.2	15.2
70	9.4	7.8	11.8



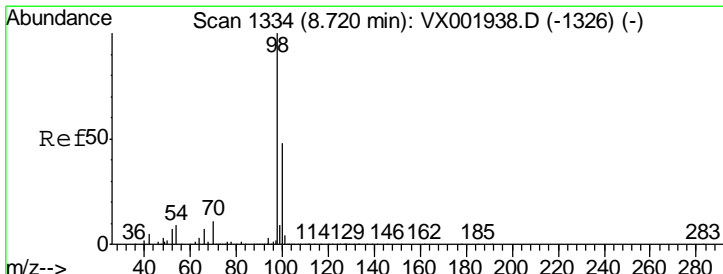
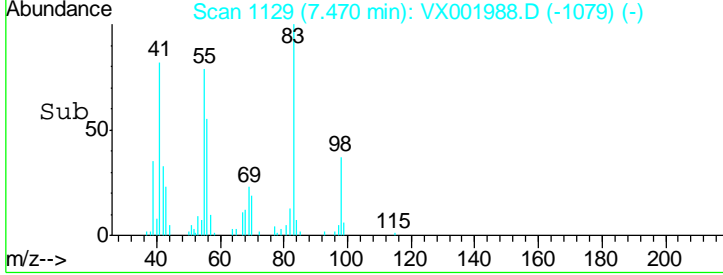
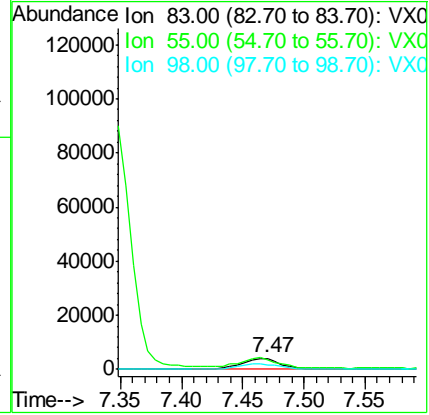
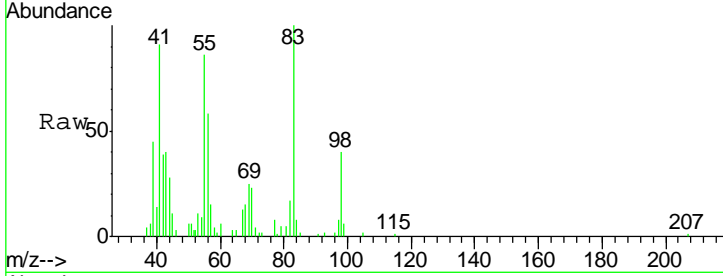




#39  
 Methylcyclohexane  
 Concen: 1.118 ug/l  
 RT: 7.47 min Scan# 1129  
 Delta R.T. 0.01 min  
 Lab File: VX001988.D  
 Acq: 25 May 2018 20:10

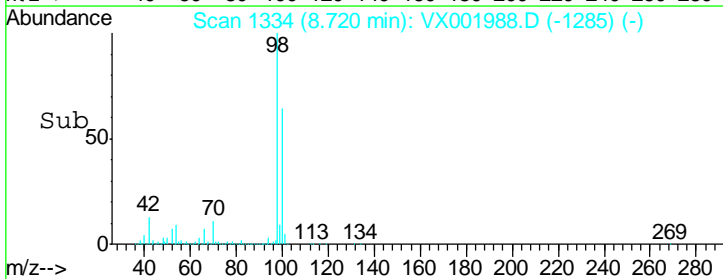
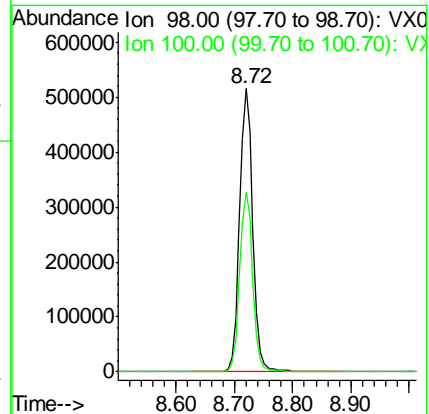
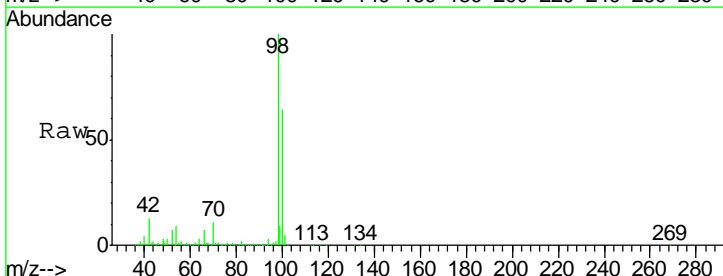
Instrument : MSVOA\_X  
 ClientSampled : MW-02

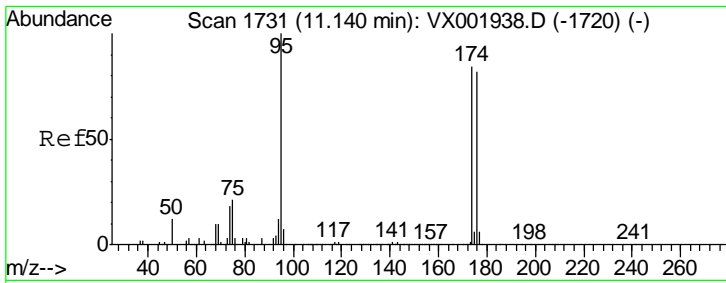
Tgt Ion	Resp	Lower	Upper
83	9068		
55	77.0	67.3	100.9
98	38.2	37.5	56.3



#50  
 Toluene-d8  
 Concen: 47.200 ug/l  
 RT: 8.72 min Scan# 1334  
 Delta R.T. 0.00 min  
 Lab File: VX001988.D  
 Acq: 25 May 2018 20:10

Tgt Ion	Resp	Lower	Upper
98	810935		
100	63.1	51.5	77.3

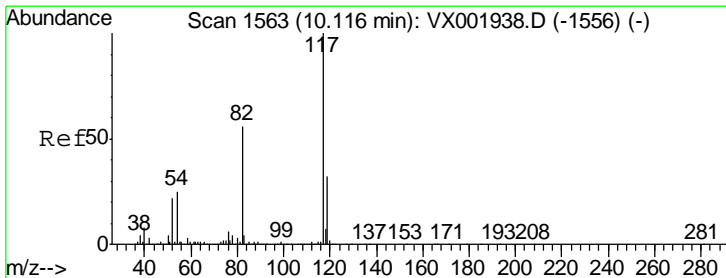
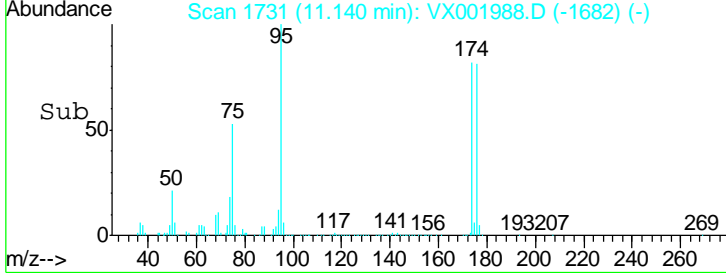
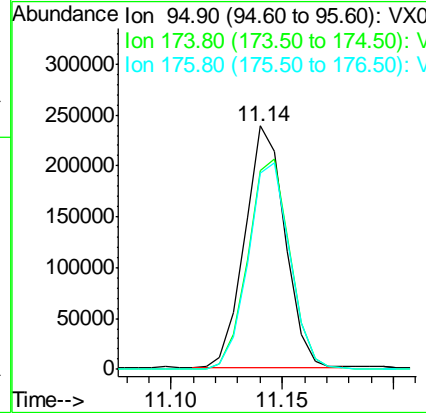
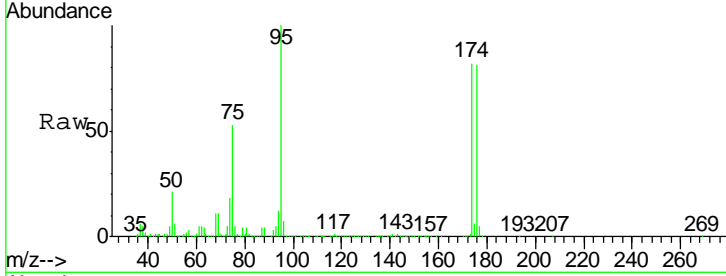




#62  
 4-Bromofluorobenzene  
 Concen: 44.612 ug/l  
 RT: 11.14 min Scan# 1731  
 Delta R.T. 0.00 min  
 Lab File: VX001988.D  
 Acq: 25 May 2018 20:10

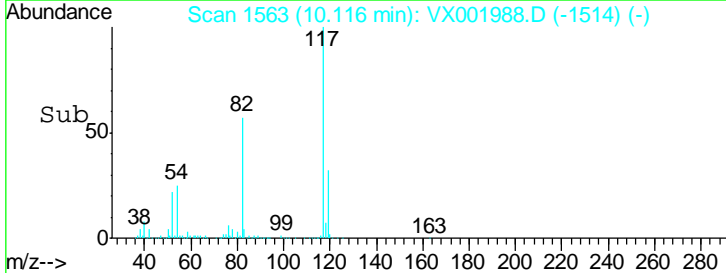
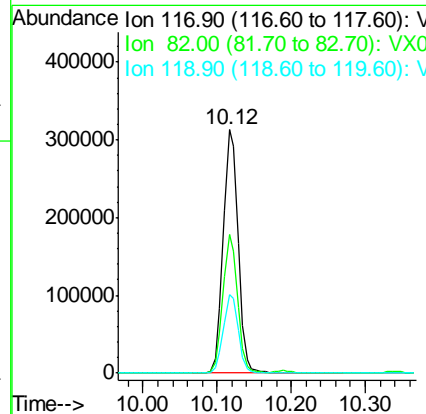
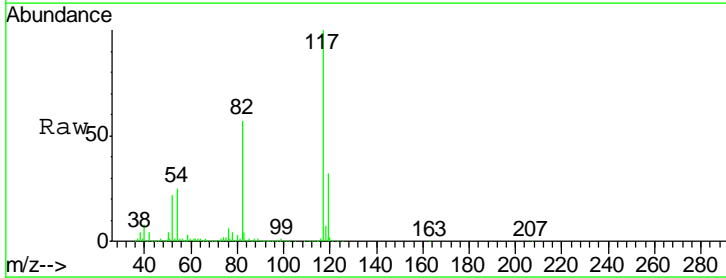
Instrument :  
 MSVOA\_X  
 ClientSampled :  
 MW-02

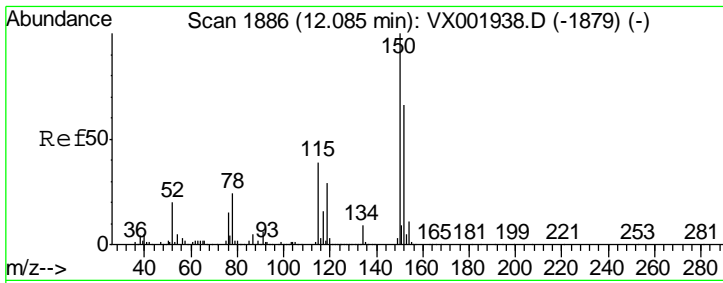
Tgt Ion	Resp	Lower	Upper
95	100		
174	90.9	0.0	178.8
176	89.0	0.0	175.6



#63  
 Chlorobenzene-d5  
 Concen: 50.000 ug/l  
 RT: 10.12 min Scan# 1563  
 Delta R.T. 0.00 min  
 Lab File: VX001988.D  
 Acq: 25 May 2018 20:10

Tgt Ion	Resp	Lower	Upper
117	100		
82	56.8	44.8	67.2
119	32.5	25.5	38.3

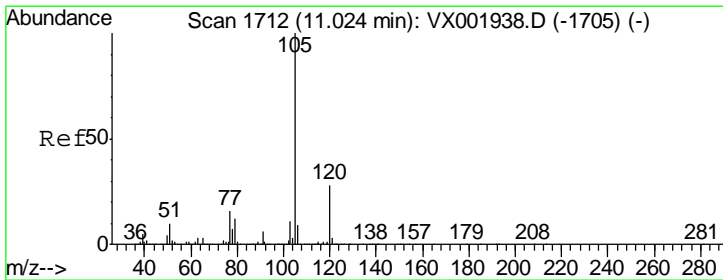
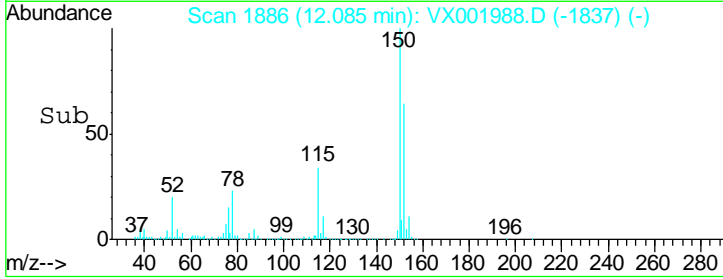
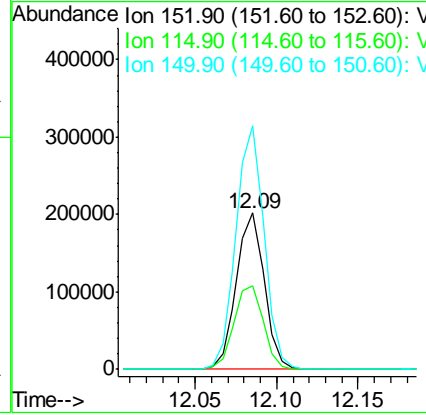
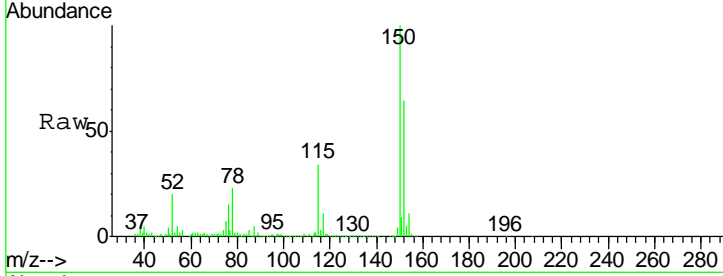




#72  
 1,4-Dichlorobenzene-d4  
 Concen: 50.000 ug/l  
 RT: 12.09 min Scan# 1886  
 Delta R.T. 0.00 min  
 Lab File: VX001988.D  
 Acq: 25 May 2018 20:10

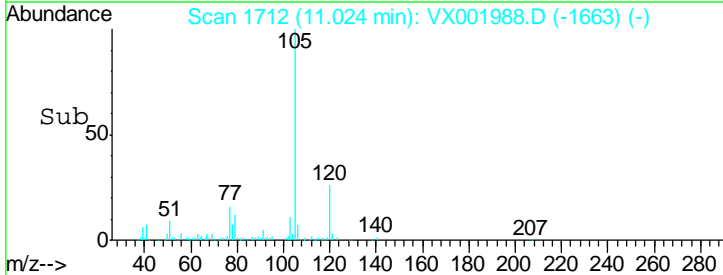
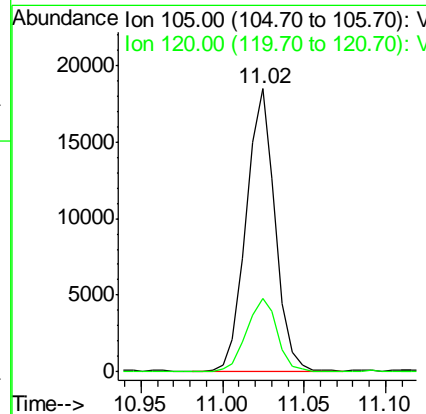
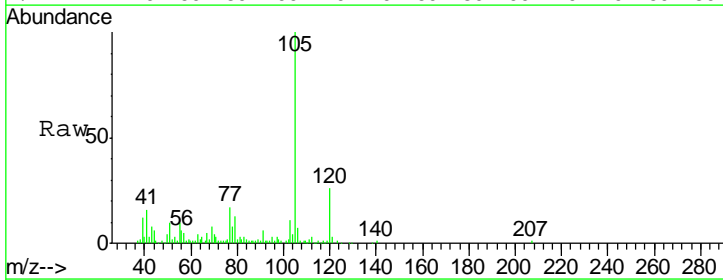
Instrument :  
 MSVOA\_X  
 ClientSampled :  
 MW-02

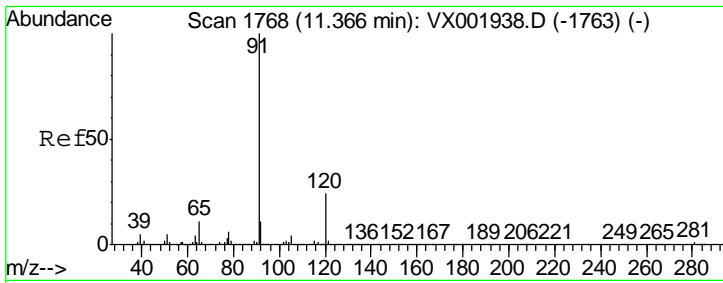
Tgt Ion	Resp	Lower	Upper
152	100		
115	56.2	42.3	126.8
150	156.9	0.0	351.0



#73  
 Isopropylbenzene  
 Concen: 1.126 ug/l  
 RT: 11.02 min Scan# 1712  
 Delta R.T. 0.00 min  
 Lab File: VX001988.D  
 Acq: 25 May 2018 20:10

Tgt Ion	Resp	Lower	Upper
105	100		
120	27.4	13.6	40.7

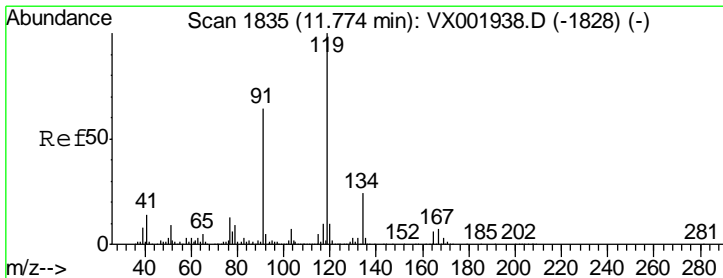
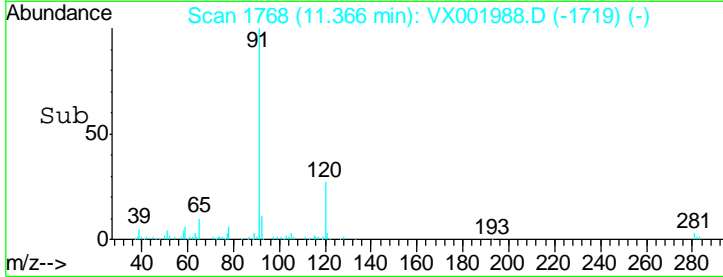
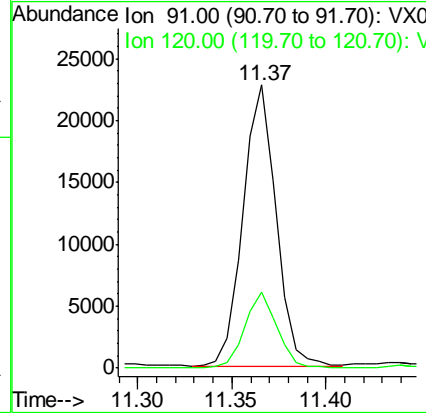
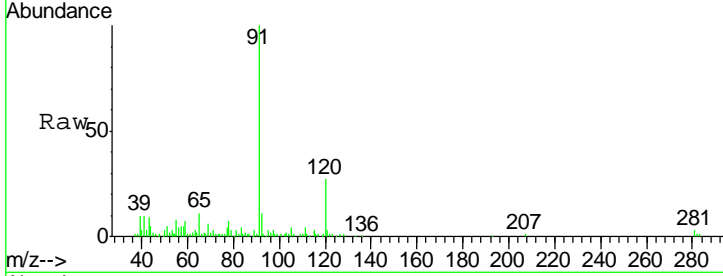




#78  
 n-propylbenzene  
 Concen: 1.212 ug/l  
 RT: 11.37 min Scan# 1768  
 Delta R.T. 0.00 min  
 Lab File: VX001988.D  
 Acq: 25 May 2018 20:10

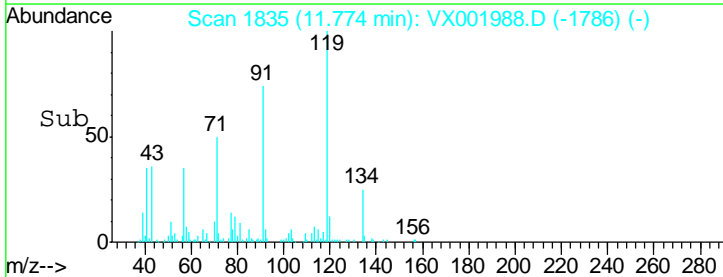
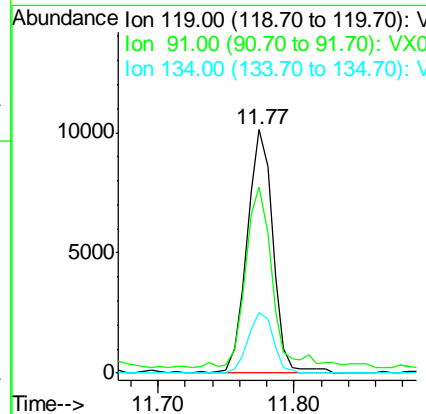
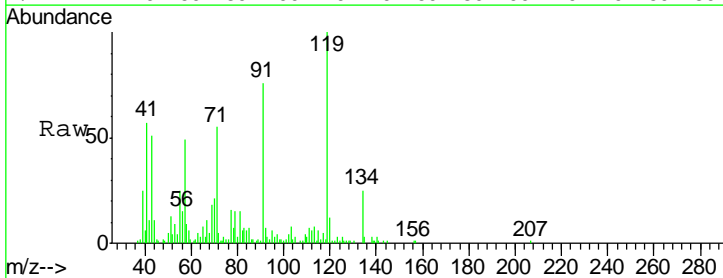
Instrument :  
 MSVOA\_X  
 ClientSampled :  
 MW-02

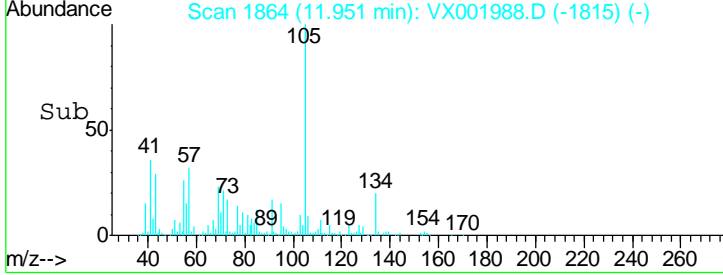
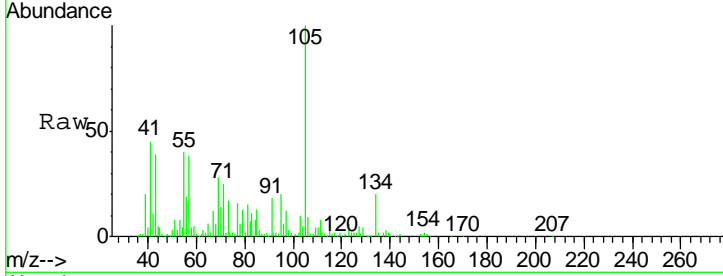
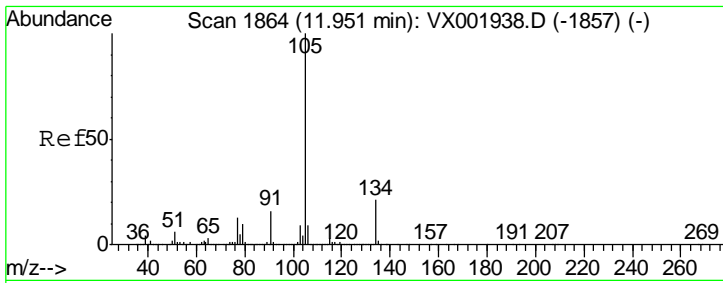
Tgt Ion	Resp	Lower	Upper
91	27722		
120	26.3	11.9	35.7



#83  
 tert-Butylbenzene  
 Concen: 0.790 ug/l  
 RT: 11.77 min Scan# 1835  
 Delta R.T. 0.00 min  
 Lab File: VX001988.D  
 Acq: 25 May 2018 20:10

Tgt Ion	Resp	Lower	Upper
119	13529		
91	77.3	30.6	91.8
134	24.0	11.7	35.0





#85  
 sec-Butylbenzene  
 Concen: 1.365 ug/l  
 RT: 11.95 min Scan# 1864  
 Delta R.T. 0.00 min  
 Lab File: VX001988.D  
 Acq: 25 May 2018 20:10

Instrument : MSVOA\_X  
 ClientSampled : MW-02

Tot Ion	Ratio	Lower	Upper
105	100		
134	26.4	10.4	31.4

