

Data Path : W:\HPCHEM1\MSVOA X\DATA\VX052618\
 Data File : VX002026.D
 Acq On : 26 May 2018 18:33
 Operator : JC/MD
 Sample : J3118-06
 Misc : 5.0mL/MSVOA X/WATER
 ALS Vial : 13 Sample Multiplier: 1

Instrument :
 MSVOA_X
ClientSampleId :
 SS037MW215-180522

Quant Time: May 28 02:09:24 2018
 Quant Method : W:\HPCHEM1\MSVOA_X\METHOD\82X052418W.M
 Quant Title : SW846 8260
 QLast Update : Thu May 24 13:09:03 2018
 Response via : Initial Calibration

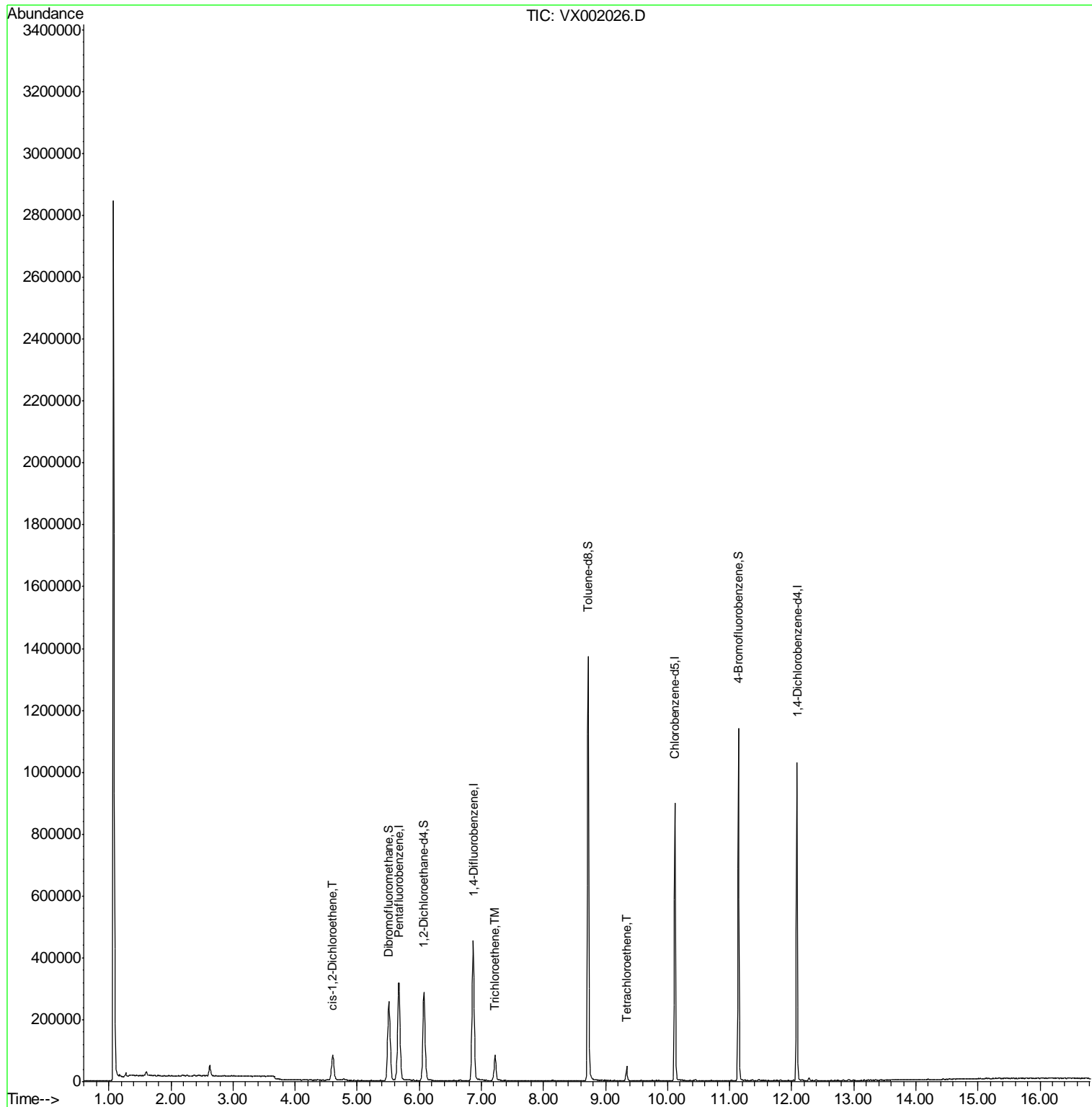
Internal Standards	R.T.	QIon	Response	Conc	Units	Dev(Min)
1) Pentafluorobenzene	5.67	168	320082	50.00	ug/l	0.00
34) 1,4-Difluorobenzene	6.87	114	449818	50.00	ug/l	0.00
63) Chlorobenzene-d5	10.12	117	398005	50.00	ug/l	0.00
72) 1,4-Dichlorobenzene-d4	12.09	152	212785	50.00	ug/l	0.00
System Monitoring Compounds						
33) 1,2-Dichloroethane-d4	6.07	65	270732	47.32	ug/l	0.00
Spiked Amount	50.000		Recovery	=	94.64%	
35) Dibromofluoromethane	5.51	113	209726	46.62	ug/l	0.00
Spiked Amount	50.000		Recovery	=	93.24%	
50) Toluene-d8	8.72	98	796849	48.93	ug/l	0.00
Spiked Amount	50.000		Recovery	=	97.86%	
62) 4-Bromofluorobenzene	11.14	95	280663	44.05	ug/l	0.00
Spiked Amount	50.000		Recovery	=	88.10%	
Target Compounds						
27) cis-1,2-Dichloroethene	4.60	96	46574	9.57	ug/l	96
44) Trichloroethene	7.22	130	31698	5.93	ug/l	97
64) Tetrachloroethene	9.34	164	8860	1.55	ug/l	97

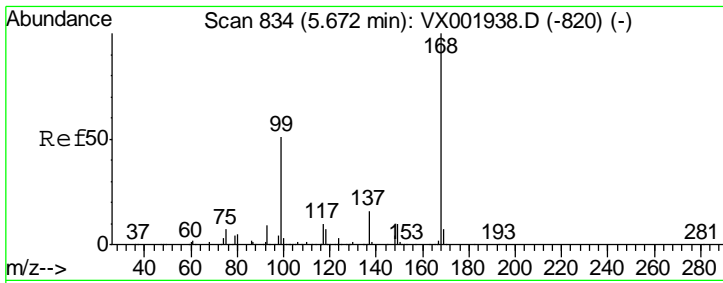
(#) = qualifier out of range (m) = manual integration (+) = signals summed

Data Path : W:\HPCHEM1\MSVOA X\DATA\VX052618\
 Data File : VX002026.D
 Acq On : 26 May 2018 18:33
 Operator : JC/MD
 Sample : J3118-06
 Misc : 5.0mL/MSVOA X/WATER
 ALS Vial : 13 Sample Multiplier: 1

Instrument :
 MSVOA_X
ClientSampleId :
 SS037MW215-180522

Quant Time: May 28 02:09:24 2018
 Quant Method : W:\HPCHEM1\MSVOA_X\METHOD\82X052418W.M
 Quant Title : SW846 8260
 QLast Update : Thu May 24 13:09:03 2018
 Response via : Initial Calibration

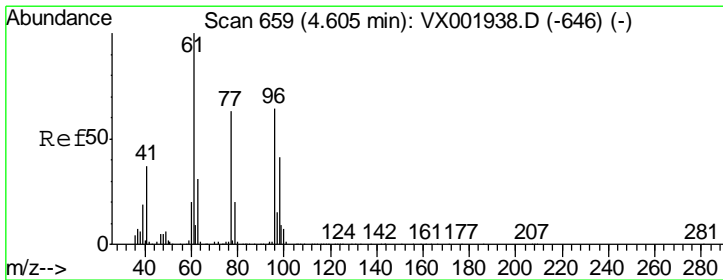
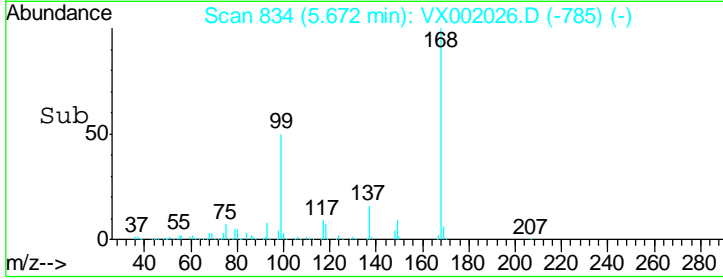
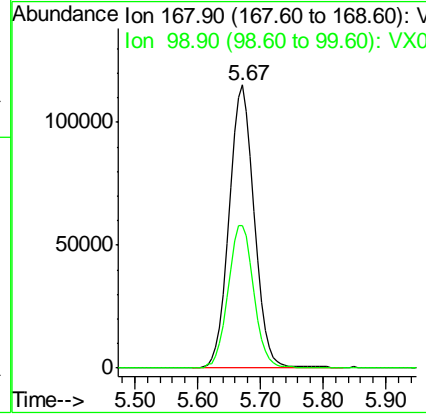
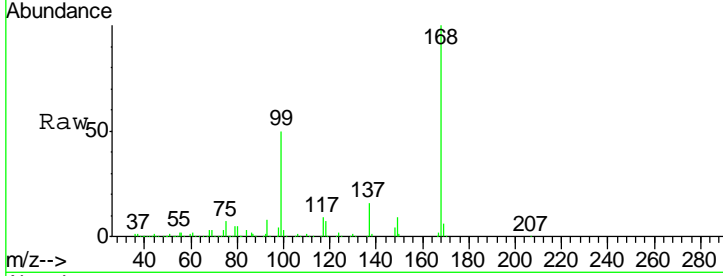




#1
 Pentafluorobenzene
 Concen: 50.00 ug/l
 RT: 5.67 min Scan# 834
 Delta R.T. -0.00 min
 Lab File: VX002026.D
 Acq: 26 May 2018 18:33

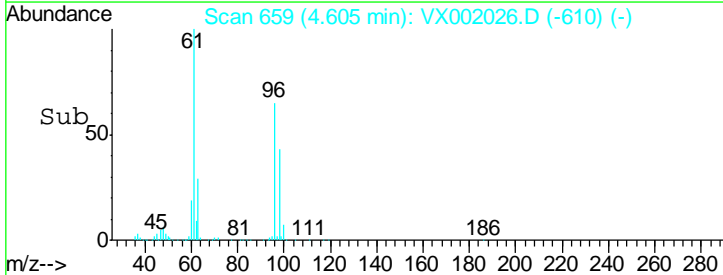
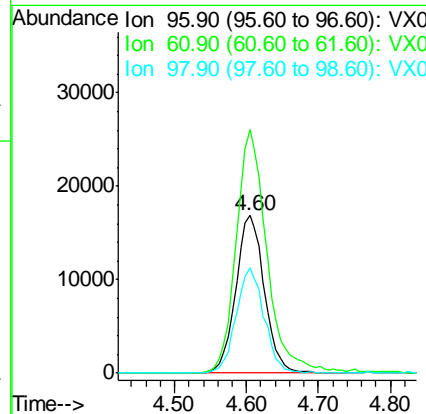
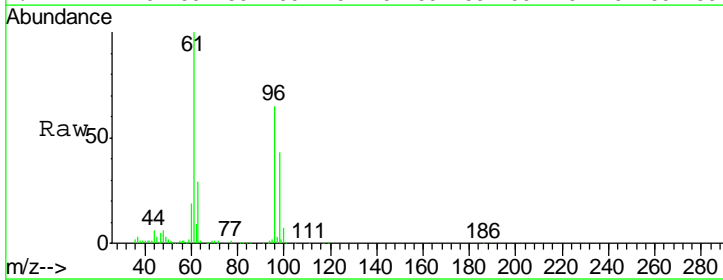
Instrument :
 MSVOA_X
 ClientSampleID :
 SS037MW215-180522

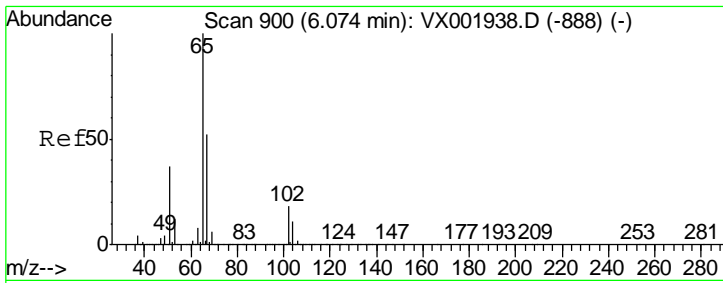
Tgt Ion	Resp	Lower	Upper
168	100		
99	50.4	41.0	61.4



#27
 cis-1,2-Dichloroethene
 Concen: 9.57 ug/l
 RT: 4.60 min Scan# 659
 Delta R.T. -0.00 min
 Lab File: VX002026.D
 Acq: 26 May 2018 18:33

Tgt Ion	Resp	Lower	Upper
96	100		
61	166.1	0.0	348.4
98	65.0	0.0	128.6

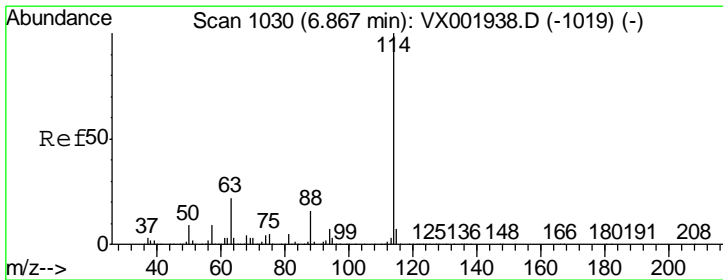
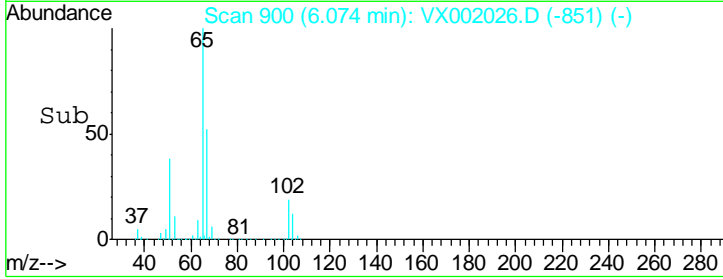
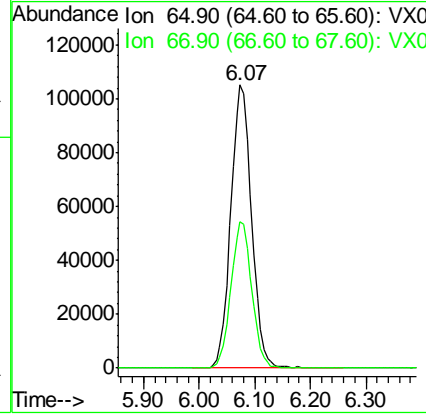
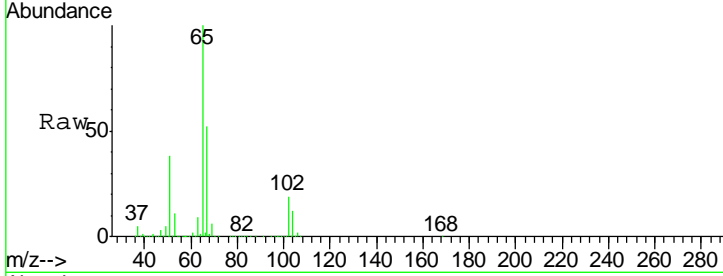




#33
 1,2-Dichloroethane-d4
 Concen: 47.32 ug/l
 RT: 6.07 min Scan# 900
 Delta R.T. -0.00 min
 Lab File: VX002026.D
 Acq: 26 May 2018 18:33

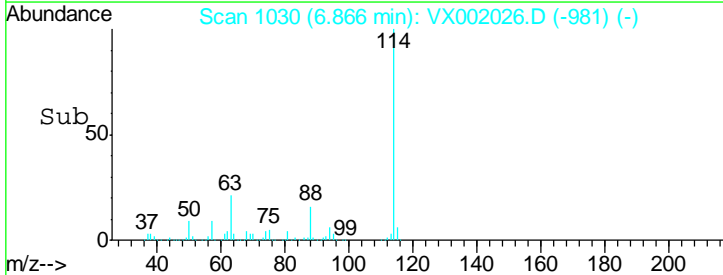
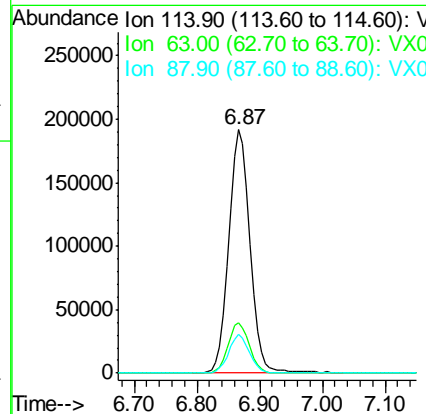
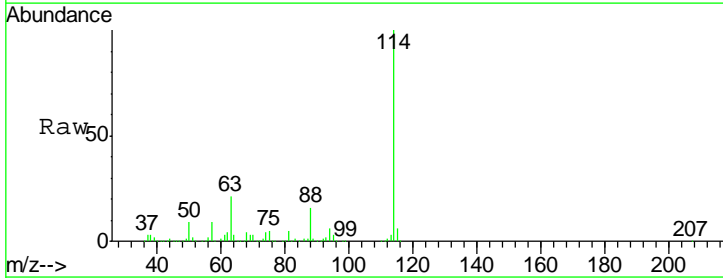
Instrument :
 MSVOA_X
 ClientSampleId :
 SS037MW215-180522

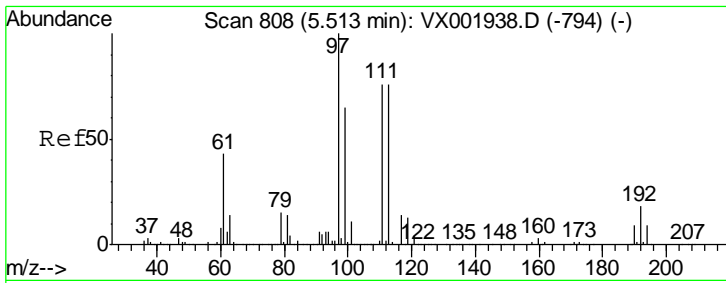
Tgt Ion	Resp	Lower	Upper
65	100		
67	51.8	0.0	104.0



#34
 1,4-Difluorobenzene
 Concen: 50.00 ug/l
 RT: 6.87 min Scan# 1030
 Delta R.T. -0.00 min
 Lab File: VX002026.D
 Acq: 26 May 2018 18:33

Tgt Ion	Resp	Lower	Upper
114	100		
63	20.7	0.0	43.2
88	16.1	0.0	31.6

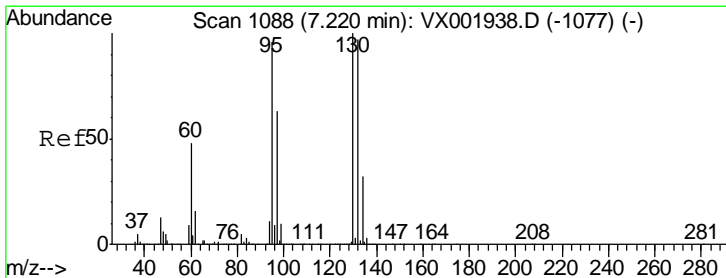
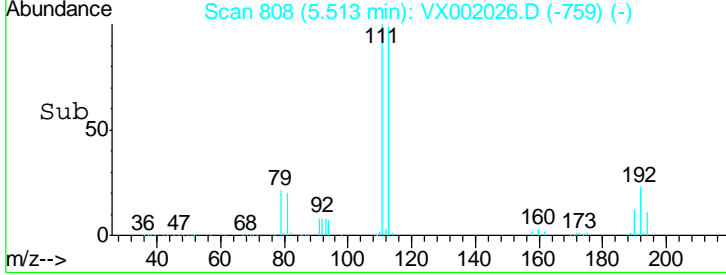
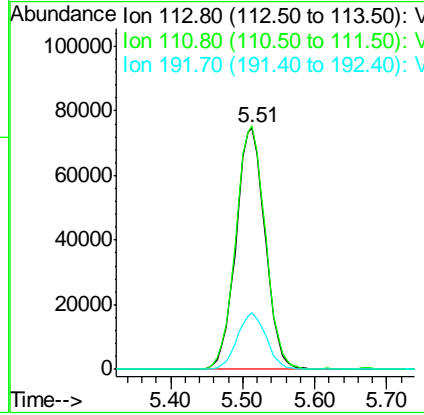
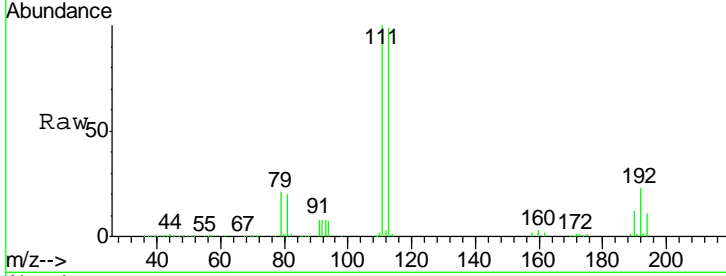




#35
 Dibromofluoromethane
 Concen: 46.62 ug/l
 RT: 5.51 min Scan# 808
 Delta R.T. -0.00 min
 Lab File: VX002026.D
 Acq: 26 May 2018 18:33

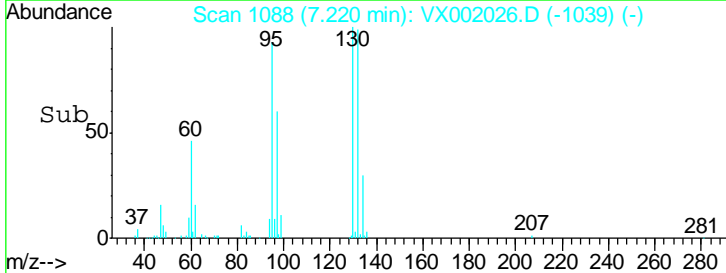
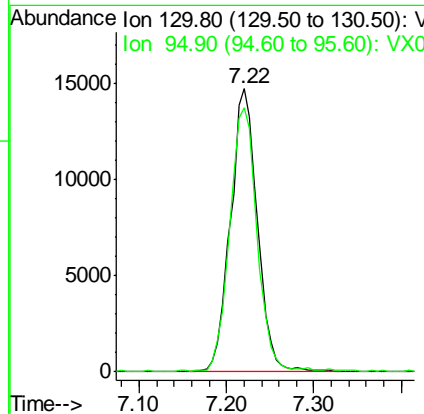
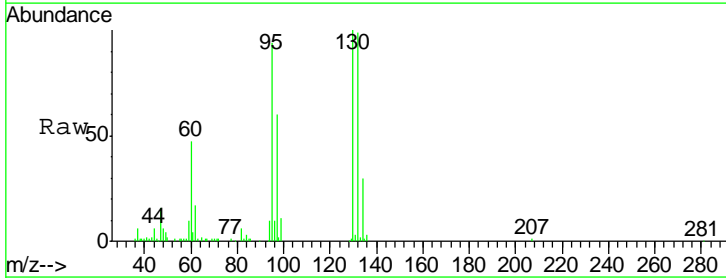
Instrument :
 MSVOA_X
 ClientSampleId :
 SS037MW215-180522

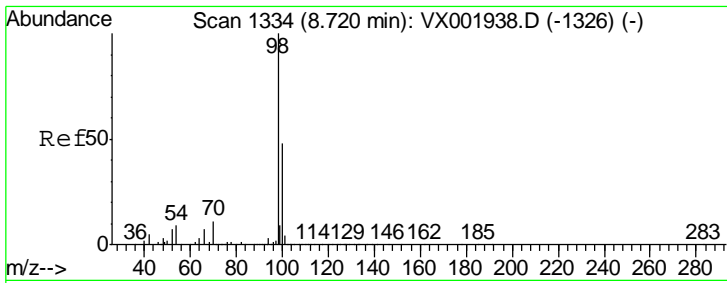
Tgt Ion	Resp	Lower	Upper
113	100		
111	102.1	82.0	123.0
192	23.2	18.9	28.3



#44
 Trichloroethene
 Concen: 5.93 ug/l
 RT: 7.22 min Scan# 1088
 Delta R.T. -0.00 min
 Lab File: VX002026.D
 Acq: 26 May 2018 18:33

Tgt Ion	Resp	Lower	Upper
130	100		
95	93.2	0.0	192.0

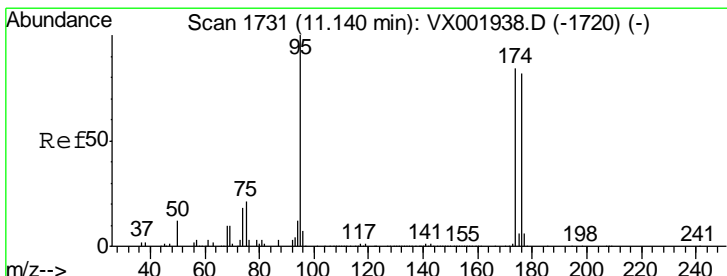
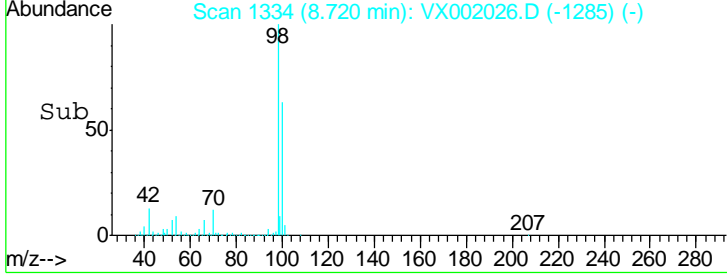
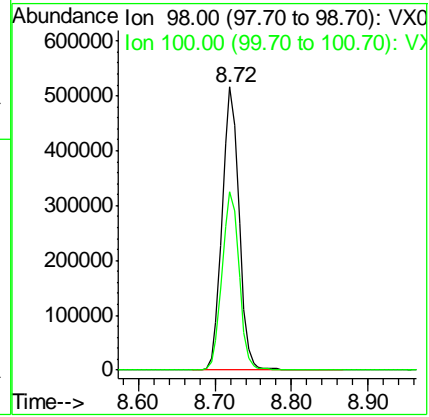
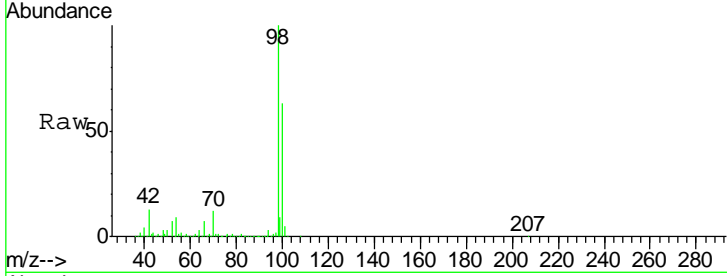




#50
 Toluene-d8
 Concen: 48.93 ug/l
 RT: 8.72 min Scan# 1334
 Delta R.T. 0.00 min
 Lab File: VX002026.D
 Acq: 26 May 2018 18:33

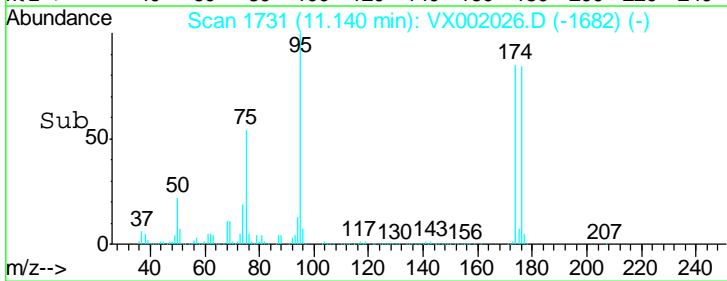
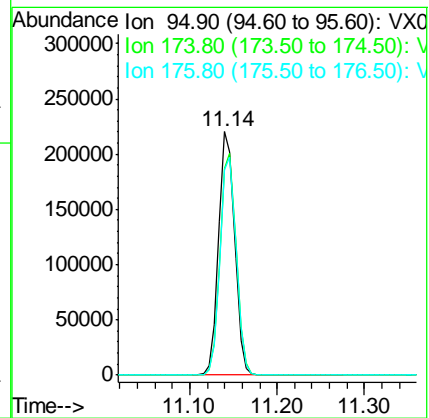
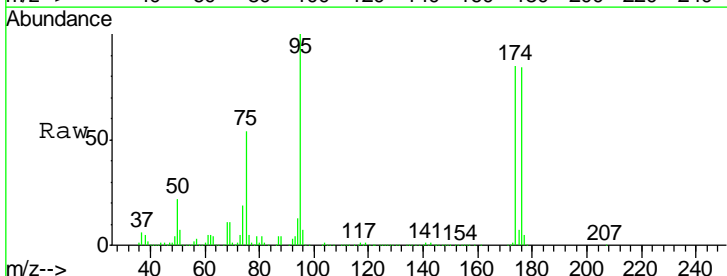
Instrument :
 MSVOA_X
ClientSampleId :
 SS037MW215-180522

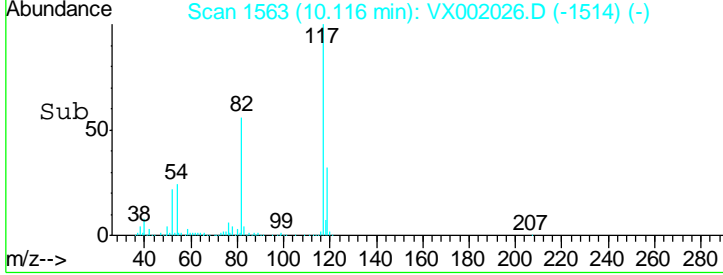
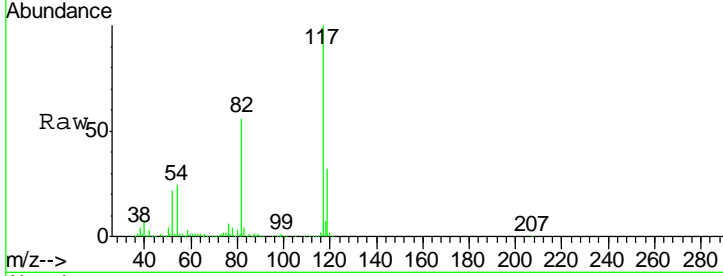
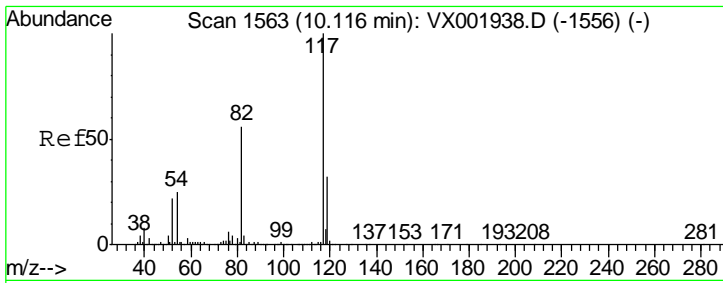
Tgt Ion	Resp	Lower	Upper
98	796849		
100	63.5	51.5	77.3



#62
 4-Bromofluorobenzene
 Concen: 44.05 ug/l
 RT: 11.14 min Scan# 1731
 Delta R.T. 0.00 min
 Lab File: VX002026.D
 Acq: 26 May 2018 18:33

Tgt Ion	Resp	Lower	Upper
95	280663		
174	90.9	0.0	178.8
176	89.6	0.0	175.6

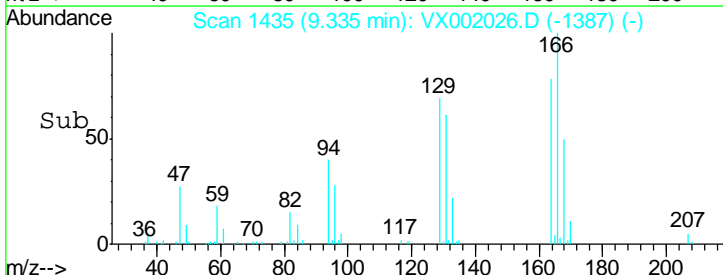
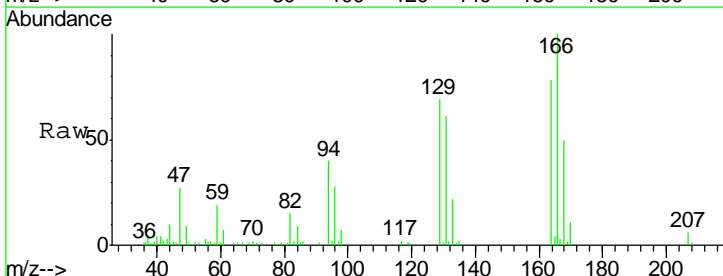
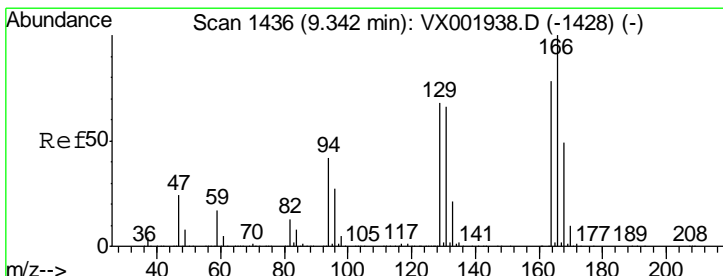
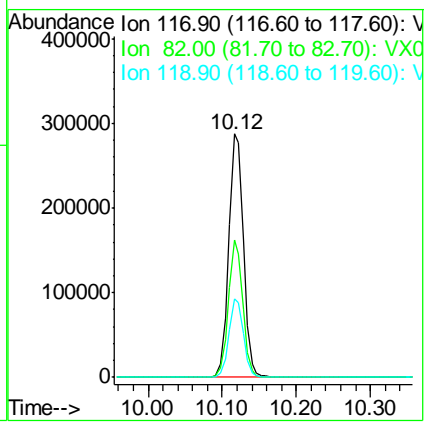




#63
 Chlorobenzene-d5
 Concen: 50.00 ug/l
 RT: 10.12 min Scan# 1563
 Delta R.T. -0.00 min
 Lab File: VX002026.D
 Acq: 26 May 2018 18:33

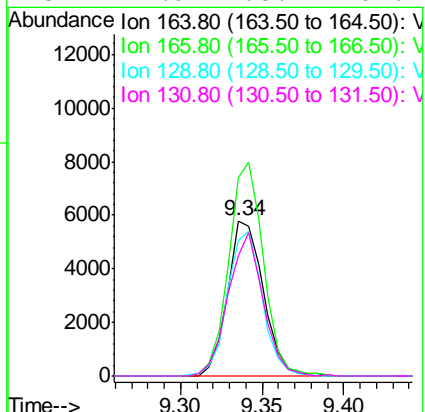
Instrument : MSVOA_X
 ClientSampled : SS037MW215-180522

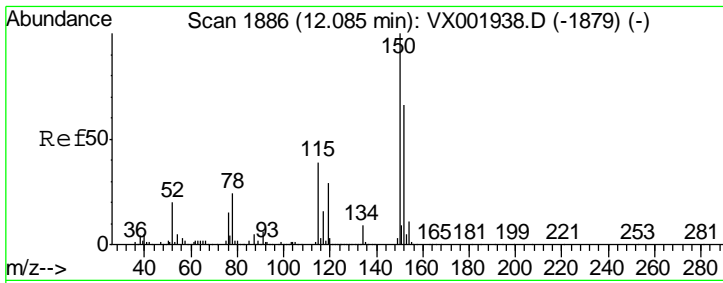
Tgt Ion	Resp	Lower	Upper
117	398005		
82	56.3	44.8	67.2
119	32.3	25.5	38.3



#64
 Tetrachloroethene
 Concen: 1.55 ug/l
 RT: 9.34 min Scan# 1435
 Delta R.T. -0.01 min
 Lab File: VX002026.D
 Acq: 26 May 2018 18:33

Tgt Ion	Resp	Lower	Upper
164	8860		
166	127.8	102.7	154.1
129	87.6	70.3	105.5
131	77.9	68.2	102.4





#72
 1,4-Dichlorobenzene-d4
 Concen: 50.00 ug/l
 RT: 12.09 min Scan# 1886
 Delta R.T. -0.00 min
 Lab File: VX002026.D
 Acq: 26 May 2018 18:33

Instrument : MSVOA_X
 ClientSampleId : SS037MW215-180522

Tot Ion	Resp	Lower	Upper
152	100		
115	55.9	42.3	126.8
150	156.8	0.0	351.0

