

Data Path : W:\HPCHEM1\MSVOA X\DATA\VX052718\  
 Data File : VX002083.D  
 Acq On : 27 May 2018 21:44  
 Operator : JC/MD  
 Sample : J3114-07  
 Misc : 5.0mL/MSVOA X/WATER  
 ALS Vial : 24 Sample Multiplier: 1

Instrument :  
 MSVOA\_X  
 ClientSampleId :  
 NYS-RBR-200035

Quant Time: May 29 08:56:17 2018  
 Quant Method : W:\HPCHEM1\MSVOA\_X\METHOD\82X052418W.M  
 Quant Title : SW846 8260  
 QLast Update : Thu May 24 13:09:03 2018  
 Response via : Initial Calibration

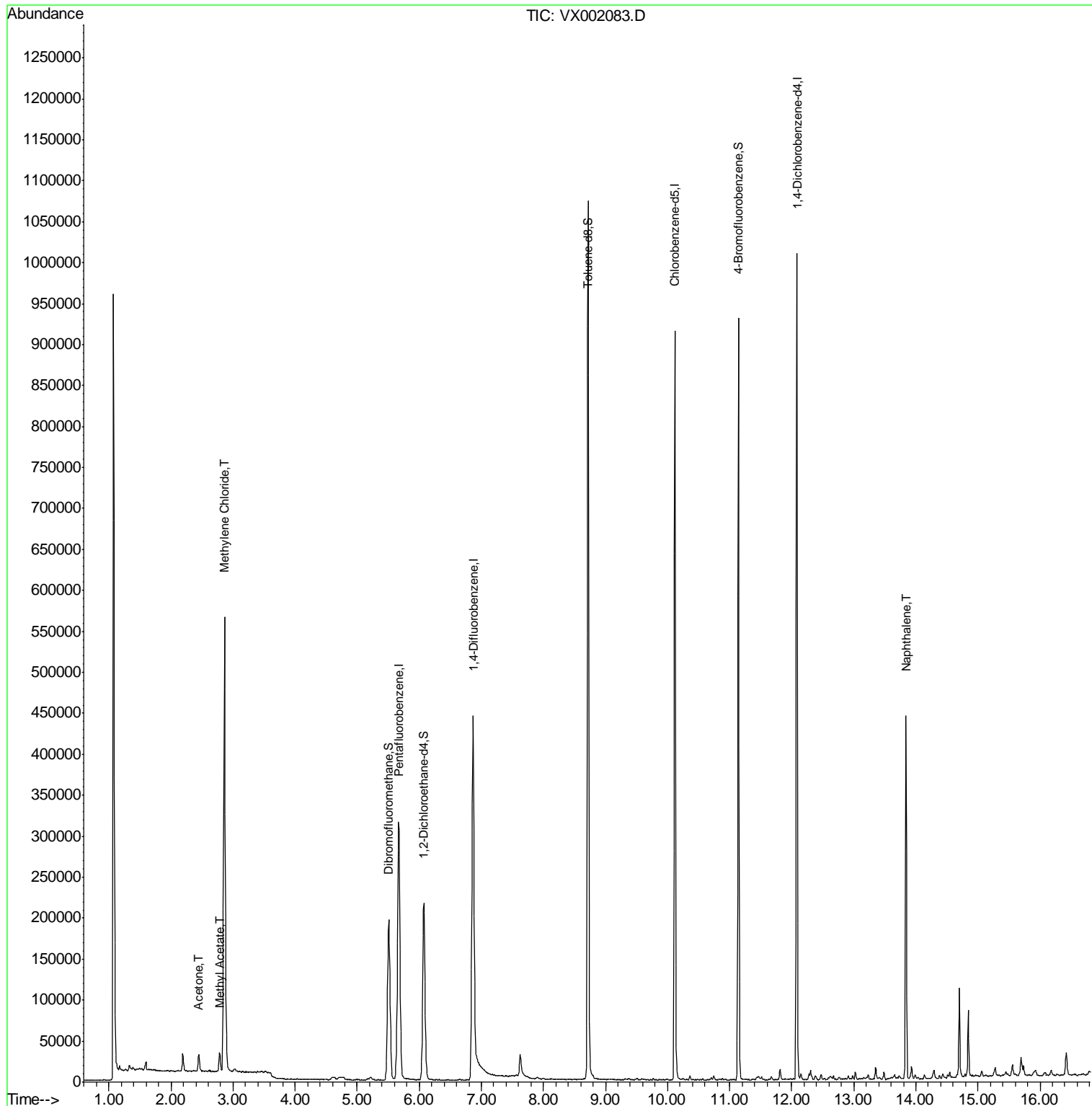
Internal Standards	R.T.	QIon	Response	Conc	Units	Dev(Min)
1) Pentafluorobenzene	5.67	168	313926	50.00	ug/l	0.00
34) 1,4-Difluorobenzene	6.87	114	440311	50.00	ug/l	0.00
63) Chlorobenzene-d5	10.12	117	391323	50.00	ug/l	0.00
72) 1,4-Dichlorobenzene-d4	12.09	152	216881	50.00	ug/l	0.00
System Monitoring Compounds						
33) 1,2-Dichloroethane-d4	6.07	65	207787	37.03	ug/l	0.00
Spiked Amount	50.000		Recovery	=	74.06%	
35) Dibromofluoromethane	5.51	113	161980	36.79	ug/l	0.00
Spiked Amount	50.000		Recovery	=	73.58%	
50) Toluene-d8	8.72	98	619271	38.85	ug/l	0.00
Spiked Amount	50.000		Recovery	=	77.70%	
62) 4-Bromofluorobenzene	11.14	95	221903	35.58	ug/l	0.00
Spiked Amount	50.000		Recovery	=	71.16%	
Target Compounds						
16) Acetone	2.45	43	23219	10.72	ug/l	98
18) Methyl Acetate	2.78	43	28459	4.42	ug/l	98
20) Methylene Chloride	2.86	84	252740	68.00	ug/l	98
95) Naphthalene	13.84	128	266993	13.63	ug/l	100

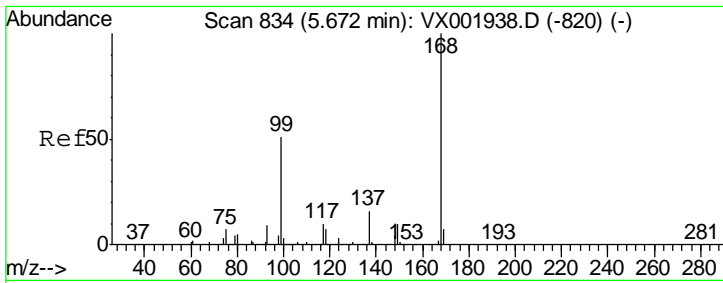
(#) = qualifier out of range (m) = manual integration (+) = signals summed

Data Path : W:\HPCHEM1\MSVOA X\DATA\VX052718\  
 Data File : VX002083.D  
 Acq On : 27 May 2018 21:44  
 Operator : JC/MD  
 Sample : J3114-07  
 Misc : 5.0mL/MSVOA X/WATER  
 ALS Vial : 24 Sample Multiplier: 1

Instrument :  
 MSVOA\_X  
 ClientSampleId :  
 NYS-RBR-200035

Quant Time: May 29 08:56:17 2018  
 Quant Method : W:\HPCHEM1\MSVOA\_X\METHOD\82X052418W.M  
 Quant Title : SW846 8260  
 QLast Update : Thu May 24 13:09:03 2018  
 Response via : Initial Calibration

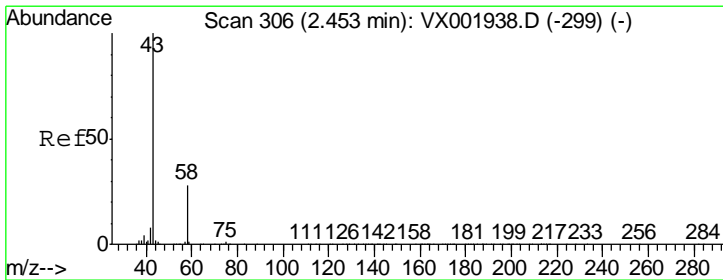
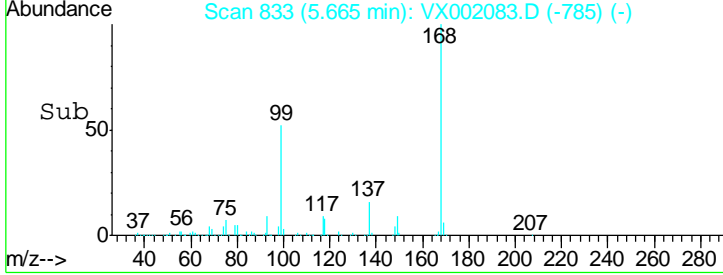
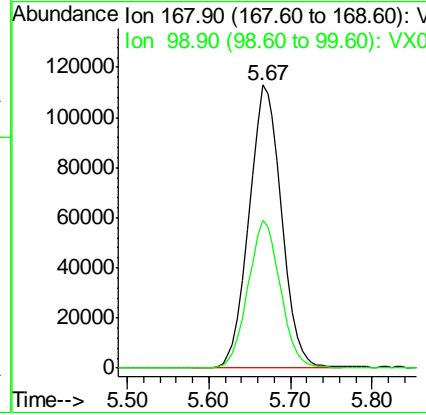
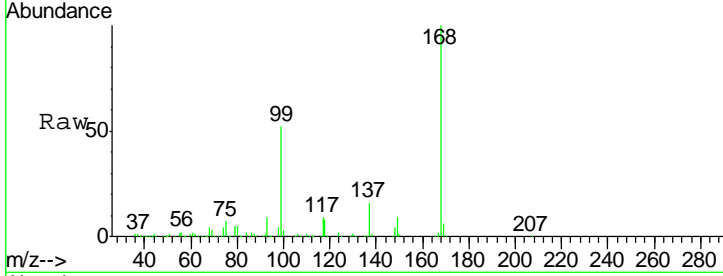




#1  
 Pentafluorobenzene  
 Concen: 50.00 ug/l  
 RT: 5.67 min Scan# 833  
 Delta R.T. -0.01 min  
 Lab File: VX002083.D  
 Acq: 27 May 2018 21:44

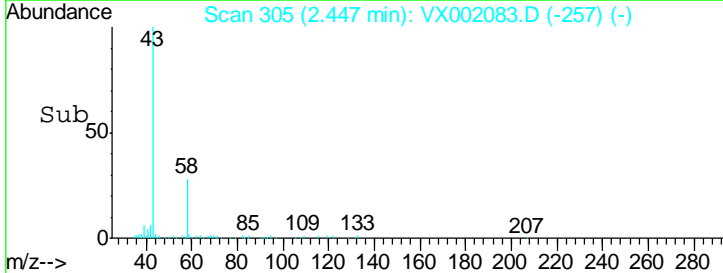
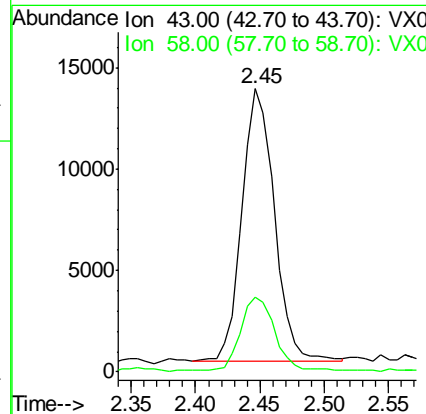
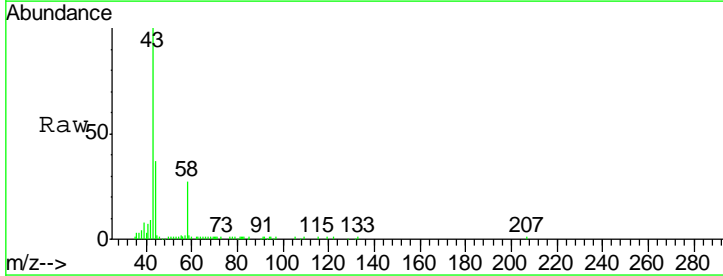
**Instrument :**  
 MSVOA\_X  
**ClientSampled :**  
 NYS-RBR-200035

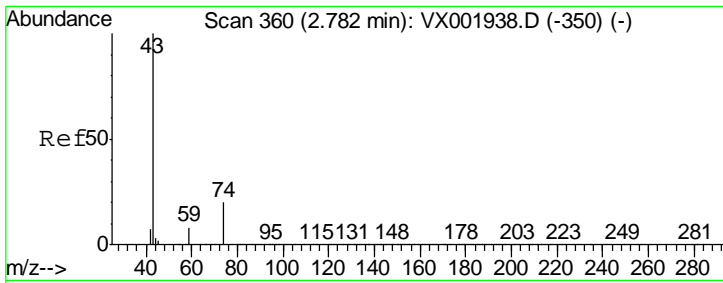
Tgt Ion	Resp	Lower	Upper
168	100		
99	52.3	41.0	61.4



#16  
 Acetone  
 Concen: 10.72 ug/l  
 RT: 2.45 min Scan# 305  
 Delta R.T. -0.01 min  
 Lab File: VX002083.D  
 Acq: 27 May 2018 21:44

Tgt Ion	Resp	Lower	Upper
43	100		
58	27.1	22.3	33.5

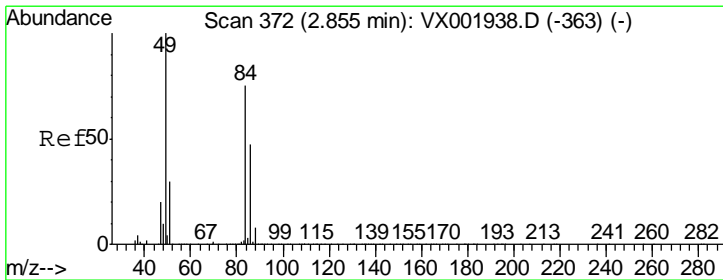
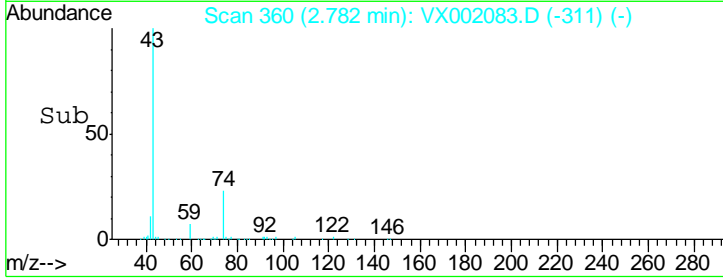
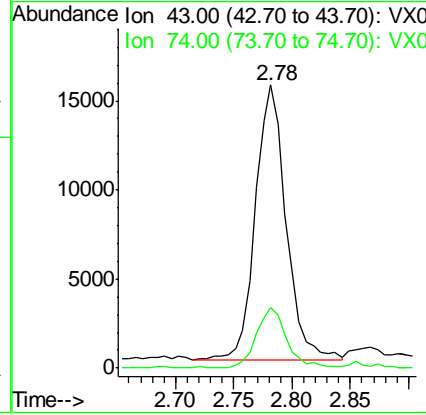
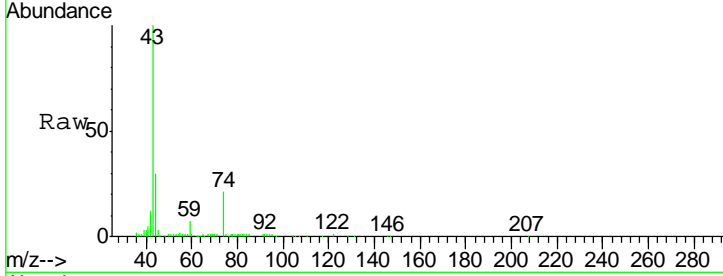




#18  
 Methyl Acetate  
 Concen: 4.42 ug/l  
 RT: 2.78 min Scan# 360  
 Delta R.T. 0.00 min  
 Lab File: VX002083.D  
 Acq: 27 May 2018 21:44

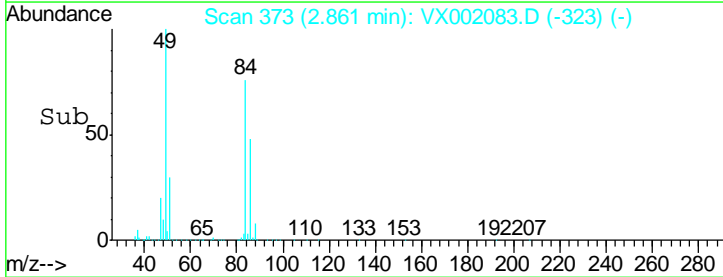
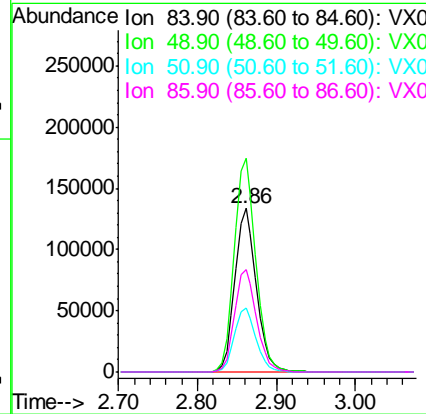
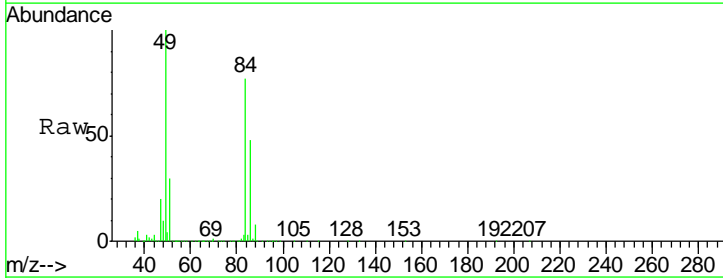
Instrument :  
 MSVOA\_X  
 ClientSampled :  
 NYS-RBR-200035

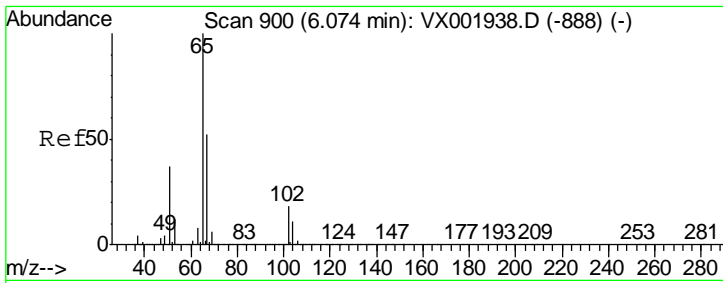
Tgt Ion	Resp	Lower	Upper
43	100		
74	21.9	16.8	25.2



#20  
 Methylene Chloride  
 Concen: 68.00 ug/l  
 RT: 2.86 min Scan# 373  
 Delta R.T. 0.01 min  
 Lab File: VX002083.D  
 Acq: 27 May 2018 21:44

Tgt Ion	Resp	Lower	Upper
84	100		
49	130.7	107.2	160.8
51	39.1	32.4	48.6
86	63.0	50.4	75.6

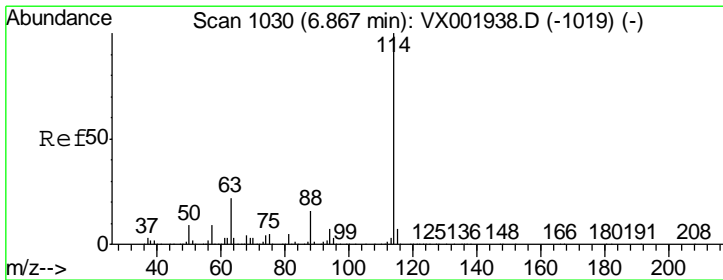
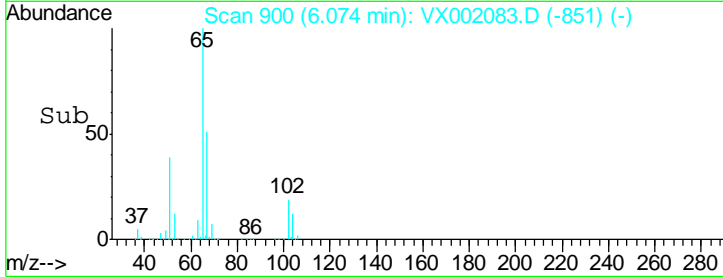
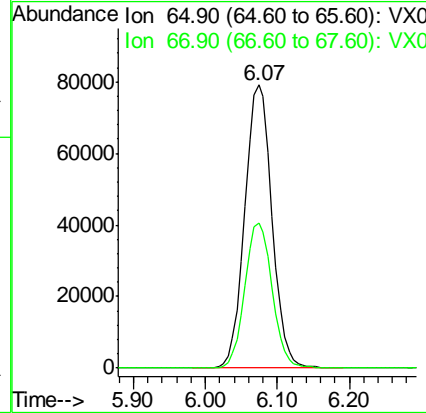
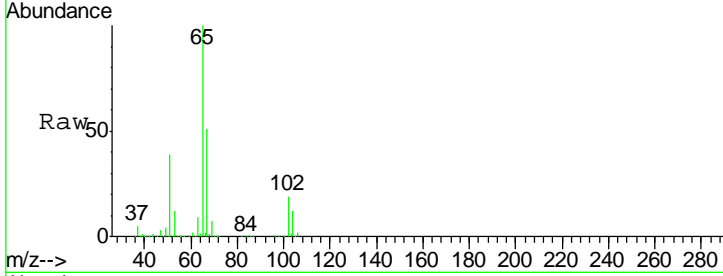




#33  
 1,2-Dichloroethane-d4  
 Concen: 37.03 ug/l  
 RT: 6.07 min Scan# 900  
 Delta R.T. -0.00 min  
 Lab File: VX002083.D  
 Acq: 27 May 2018 21:44

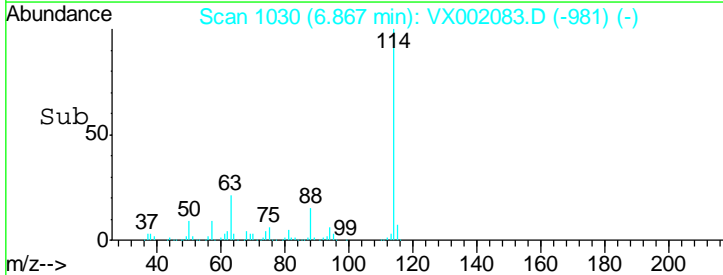
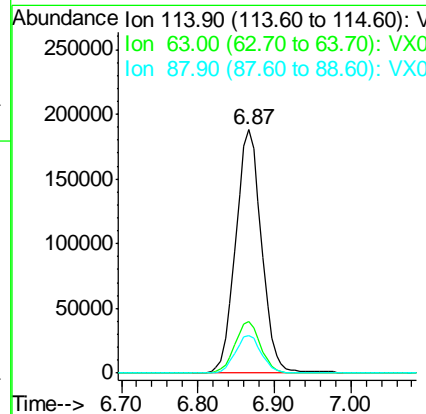
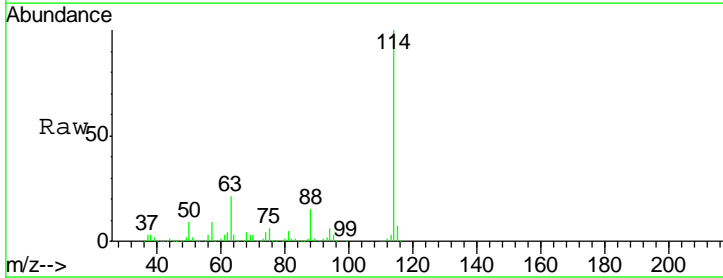
Instrument :  
 MSVOA\_X  
 ClientSampleId :  
 NYS-RBR-200035

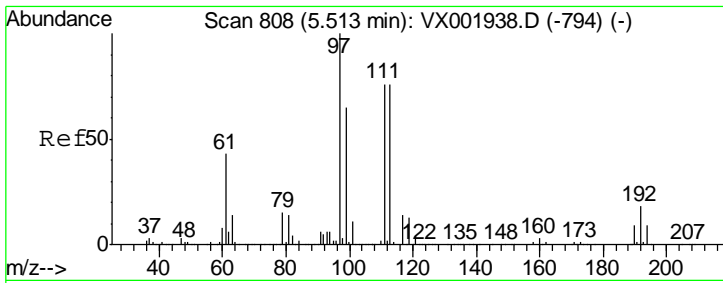
Tgt Ion	Resp	Lower	Upper
65	100		
67	51.5	0.0	104.0



#34  
 1,4-Difluorobenzene  
 Concen: 50.00 ug/l  
 RT: 6.87 min Scan# 1030  
 Delta R.T. -0.00 min  
 Lab File: VX002083.D  
 Acq: 27 May 2018 21:44

Tgt Ion	Resp	Lower	Upper
114	100		
63	21.1	0.0	43.2
88	15.5	0.0	31.6

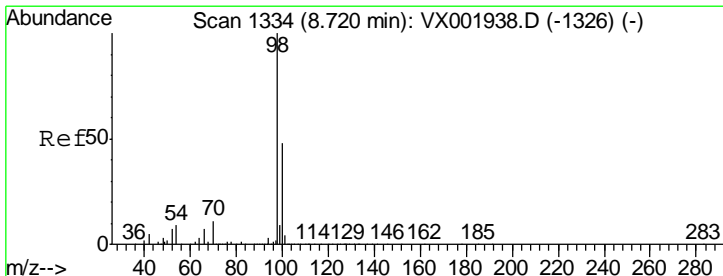
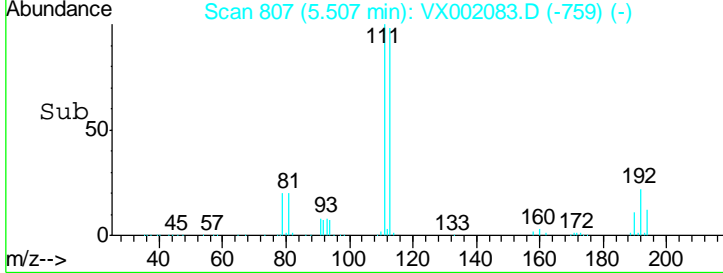
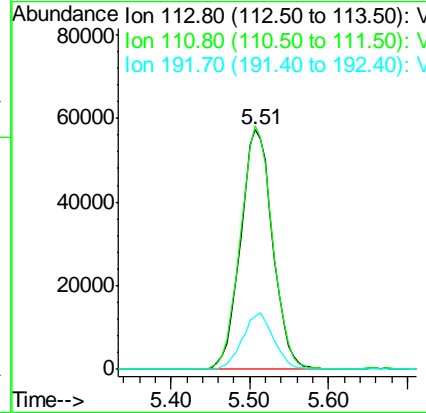
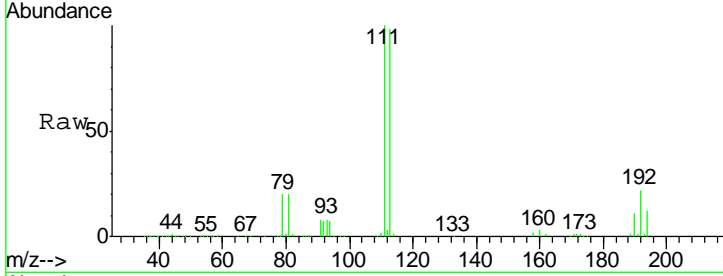




#35  
 Dibromofluoromethane  
 Concen: 36.79 ug/l  
 RT: 5.51 min Scan# 807  
 Delta R.T. -0.01 min  
 Lab File: VX002083.D  
 Acq: 27 May 2018 21:44

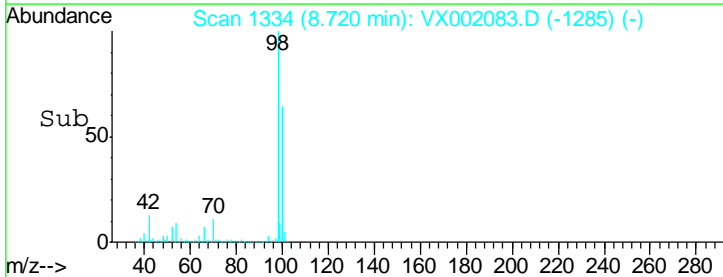
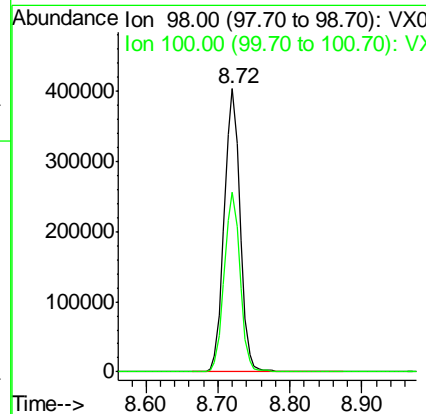
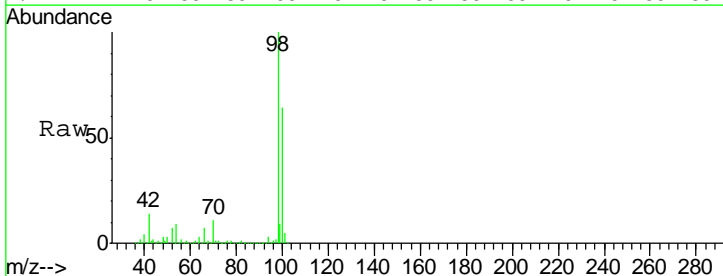
**Instrument :**  
 MSVOA\_X  
**ClientSampled :**  
 NYS-RBR-200035

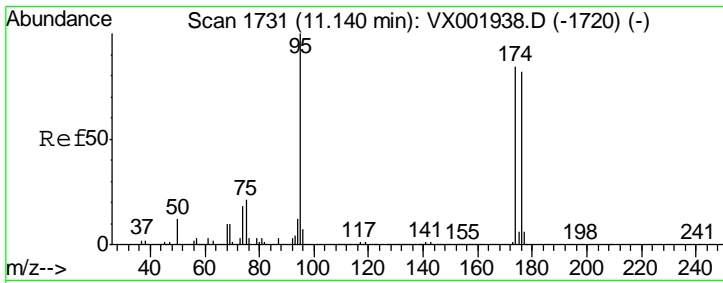
Tgt Ion	Resp	Lower	Upper
113	161980		
111	101.2	82.0	123.0
192	23.0	18.9	28.3



#50  
 Toluene-d8  
 Concen: 38.85 ug/l  
 RT: 8.72 min Scan# 1334  
 Delta R.T. 0.00 min  
 Lab File: VX002083.D  
 Acq: 27 May 2018 21:44

Tgt Ion	Resp	Lower	Upper
98	619271		
100	63.6	51.5	77.3

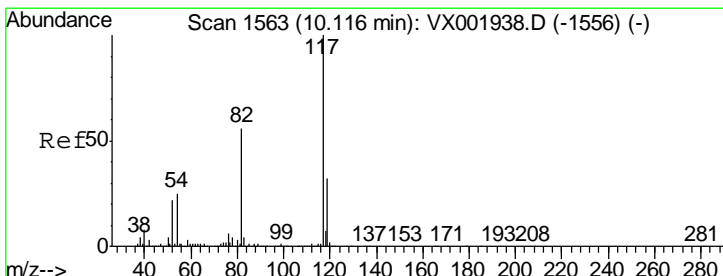
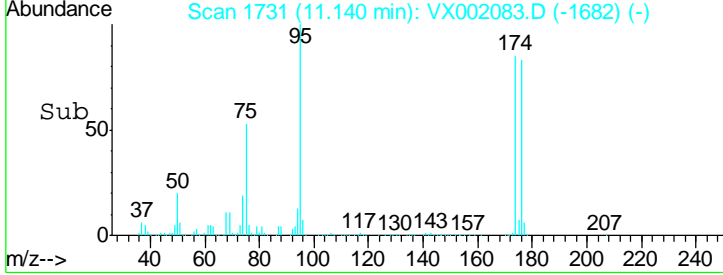
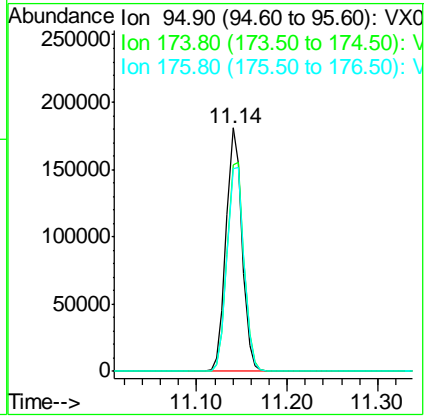
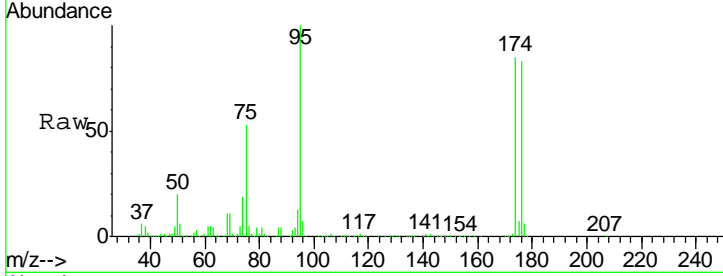




#62  
 4-Bromofluorobenzene  
 Concen: 35.58 ug/l  
 RT: 11.14 min Scan# 1731  
 Delta R.T. 0.00 min  
 Lab File: VX002083.D  
 Acq: 27 May 2018 21:44

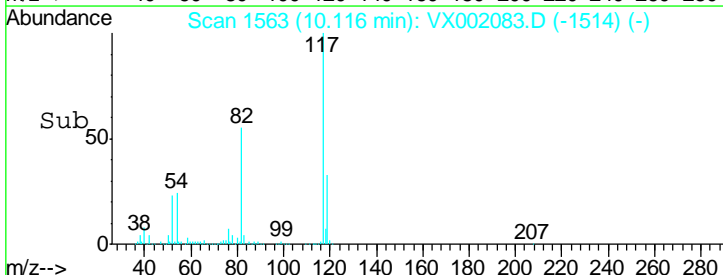
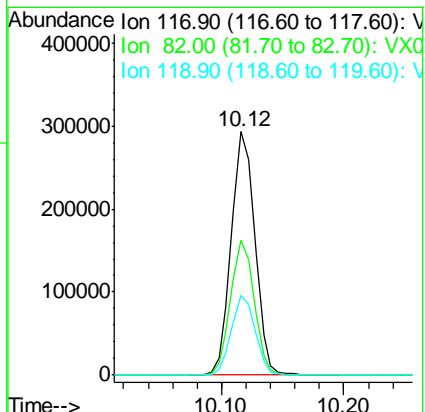
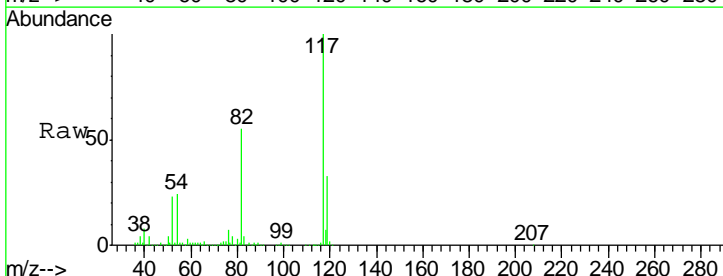
Instrument : MSVOA\_X  
 ClientSampled : NYS-RBR-200035

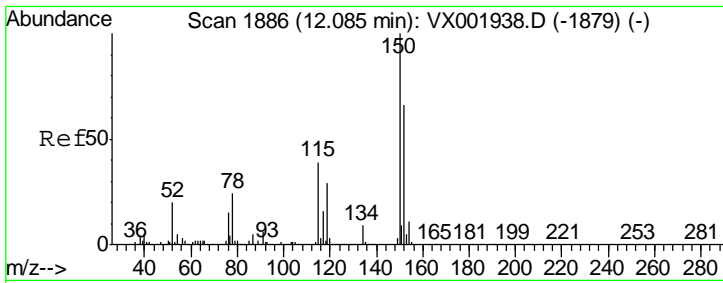
Tgt Ion	Resp	Lower	Upper
95	221903		
174	91.2	0.0	178.8
176	89.4	0.0	175.6



#63  
 Chlorobenzene-d5  
 Concen: 50.00 ug/l  
 RT: 10.12 min Scan# 1563  
 Delta R.T. -0.00 min  
 Lab File: VX002083.D  
 Acq: 27 May 2018 21:44

Tgt Ion	Resp	Lower	Upper
117	391323		
82	55.5	44.8	67.2
119	32.5	25.5	38.3

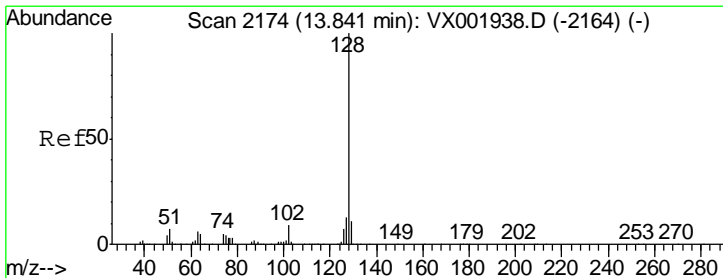
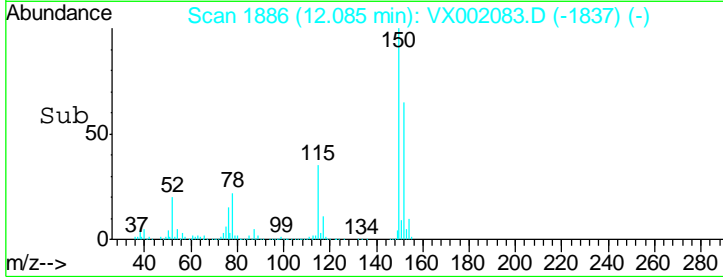
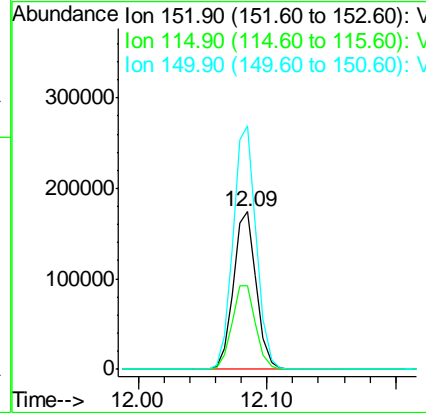
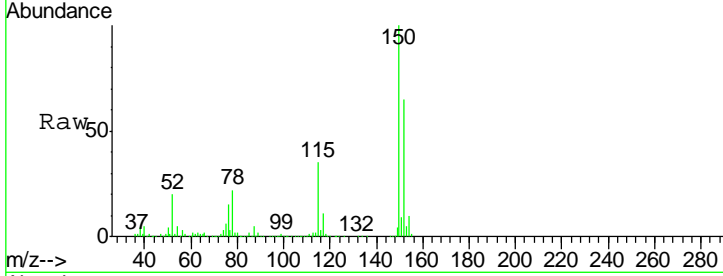




#72  
 1,4-Dichlorobenzene-d4  
 Concen: 50.00 ug/l  
 RT: 12.09 min Scan# 1886  
 Delta R.T. -0.00 min  
 Lab File: VX002083.D  
 Acq: 27 May 2018 21:44

Instrument :  
 MSVOA\_X  
 ClientSampled :  
 NYS-RBR-200035

Tgt Ion	Resp	Lower	Upper
152	100		
115	55.3	42.3	126.8
150	156.4	0.0	351.0



#95  
 Naphthalene  
 Concen: 13.63 ug/l  
 RT: 13.84 min Scan# 2174  
 Delta R.T. -0.00 min  
 Lab File: VX002083.D  
 Acq: 27 May 2018 21:44

Tgt Ion	Resp	Lower	Upper
128	100		
127	13.0	10.4	15.6
129	10.9	8.8	13.2

