

Data Path : Z:\voasrv\HPCHEM1\MSVOA\_X\Data\VX052825\  
 Data File : VX046380.D  
 Acq On : 28 May 2025 13:06  
 Operator : JC/MD  
 Sample : Q2128-04  
 Misc : 5.0mL/MSVOA\_X/WATER  
 ALS Vial : 9 Sample Multiplier: 1

Instrument :  
 MSVOA\_X  
 ClientSampleId :  
 TP03-MHM

Quant Time: May 29 03:35:11 2025  
 Quant Method : Z:\voasrv\HPCHEM1\MSVOA\_X\Method\82X050525W.M  
 Quant Title : SW846 8260  
 QLast Update : Tue May 06 07:12:22 2025  
 Response via : Initial Calibration

Compound	R.T.	QIon	Response	Conc	Units	Dev(Min)
Internal Standards						
1) Pentafluorobenzene	5.550	168	58821	50.000	ug/l	0.00
34) 1,4-Difluorobenzene	6.757	114	120109	50.000	ug/l	0.00
63) Chlorobenzene-d5	10.049	117	116923	50.000	ug/l	0.00
72) 1,4-Dichlorobenzene-d4	12.018	152	52090	50.000	ug/l	0.00
System Monitoring Compounds						
33) 1,2-Dichloroethane-d4	5.946	65	60849	55.488	ug/l	0.00
Spiked Amount	50.000	Range	74 - 125	Recovery	=	110.980%
35) Dibromofluoromethane	5.385	113	44100	50.988	ug/l	0.00
Spiked Amount	50.000	Range	75 - 124	Recovery	=	101.980%
50) Toluene-d8	8.647	98	155280	51.871	ug/l	0.00
Spiked Amount	50.000	Range	86 - 113	Recovery	=	103.740%
62) 4-Bromofluorobenzene	11.079	95	61105	53.214	ug/l	0.00
Spiked Amount	50.000	Range	77 - 121	Recovery	=	106.420%
Target Compounds						
						Qvalue
3) Chloromethane	1.307	50	40	0.046	ug/l #	43
5) Bromomethane	1.593	94	101	0.268	ug/l #	4
6) Chloroethane	1.666	64	37	0.085	ug/l #	44
11) Tert butyl alcohol	2.983	59	442	2.871	ug/l #	72
13) Acrolein	2.233	56	33	0.188	ug/l #	15
14) Allyl chloride	2.654	41	205	0.154	ug/l #	21
16) Acetone	2.386	43	52340	119.038	ug/l	99
17) Carbon Disulfide	2.514	76	106	0.064	ug/l #	76
18) Methyl Acetate	2.709	43	2219	2.175	ug/l	95
20) Methylene Chloride	2.788	84	6698	7.949	ug/l	94
23) Vinyl Acetate	3.568	43	164	0.072	ug/l #	74
25) 2-Butanone	4.587	43	4140	6.486	ug/l	92
29) Tetrahydrofuran	5.038	42	235	0.588	ug/l #	42
31) Cyclohexane	5.544	56	1946	1.489	ug/l #	50
36) 1,1-Dichloropropene	5.550	75	5910	5.086	ug/l #	50
37) Ethyl Acetate	4.587	43	4140	2.883	ug/l #	70
38) Carbon Tetrachloride	5.538	117	7348	5.628	ug/l #	16
41) Methacrylonitrile	5.056	41	122	0.162	ug/l #	33
42) 1,2-Dichloroethane	6.111	62	22	0.015	ug/l #	78
43) Isopropyl Acetate	6.342	43	10592	4.836	ug/l	98
48) Methyl methacrylate	7.793	41	46517	41.584	ug/l #	50
51) 4-Methyl-2-Pentanone	8.543	43	35602	24.487	ug/l #	53
53) t-1,3-Dichloropropene	8.952	75	212	0.181	ug/l #	43
54) cis-1,3-Dichloropropene	8.549	75	13663	10.578	ug/l #	61
56) Ethyl methacrylate	9.250	69	172	0.131	ug/l #	1
57) 1,3-Dichloropropane	9.482	76	1380	0.934	ug/l #	42
59) 2-Hexanone	9.482	43	22707	21.110	ug/l #	54
67) Ethyl Benzene	10.195	91	23	0.005	ug/l #	45
73) Isopropylbenzene	11.085	105	50	0.012	ug/l #	49
74) N-amyl acetate	10.903	43	171	0.085	ug/l #	46
75) 1,1,2,2-Tetrachloroethane	11.085	83	83	0.058	ug/l #	3
76) 1,2,3-Trichloropropane	11.079	75	35081	27.979	ug/l #	36
78) n-propylbenzene	11.317	91	68	0.014	ug/l #	54
79) 2-Chlorotoluene	11.317	91	68	0.022	ug/l #	44
80) 1,3,5-Trimethylbenzene	11.445	105	19	0.006	ug/l #	30
81) trans-1,4-Dichloro-2-b...	11.079	75	35081	91.091	ug/l #	1

Data Path : Z:\voasrv\HPCHEM1\MSVOA\_X\Data\VX052825\  
 Data File : VX046380.D  
 Acq On : 28 May 2025 13:06  
 Operator : JC/MD  
 Sample : Q2128-04  
 Misc : 5.0mL/MSVOA\_X/WATER  
 ALS Vial : 9 Sample Multiplier: 1

Instrument :  
 MSVOA\_X  
 ClientSampleId :  
 TP03-MHM

Quant Time: May 29 03:35:11 2025  
 Quant Method : Z:\voasrv\HPCHEM1\MSVOA\_X\Method\82X050525W.M  
 Quant Title : SW846 8260  
 QLast Update : Tue May 06 07:12:22 2025  
 Response via : Initial Calibration

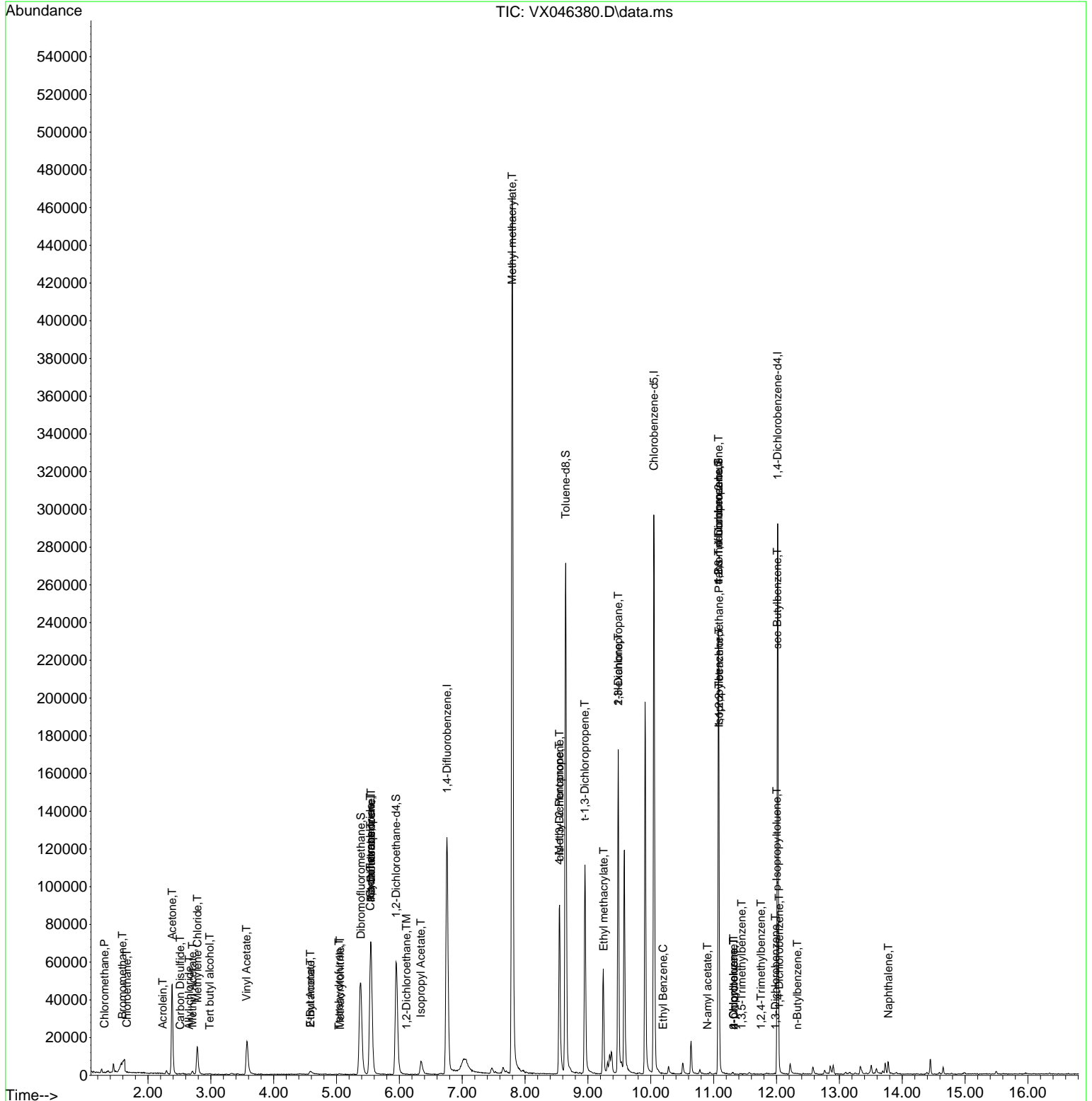
Compound	R.T.	QIon	Response	Conc	Units	Dev(Min)
82) 4-Chlorotoluene	11.317	91	68	0.020	ug/l #	48
84) 1,2,4-Trimethylbenzene	11.756	105	139	0.041	ug/l	100
85) sec-Butylbenzene	12.012	105	65	0.016	ug/l #	1
86) p-Isopropyltoluene	12.006	119	991	0.287	ug/l #	71
87) 1,3-Dichlorobenzene	11.982	146	26	0.015	ug/l #	24
88) 1,4-Dichlorobenzene	12.043	146	49	0.028	ug/l #	1
89) n-Butylbenzene	12.329	91	51	0.017	ug/l #	33
95) Naphthalene	13.780	128	4396	1.210	ug/l	99

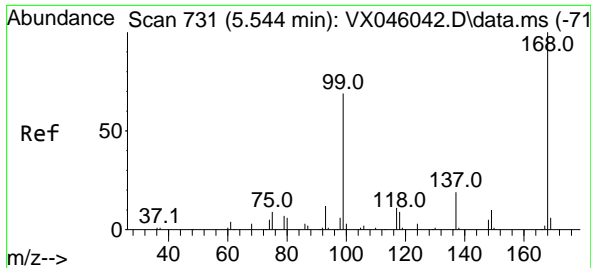
(#) = qualifier out of range (m) = manual integration (+) = signals summed

Data Path : Z:\voasrv\HPCHEM1\MSVOA\_X\Data\VX052825\  
 Data File : VX046380.D  
 Acq On : 28 May 2025 13:06  
 Operator : JC/MD  
 Sample : Q2128-04  
 Misc : 5.0mL/MSVOA\_X/WATER  
 ALS Vial : 9 Sample Multiplier: 1

Instrument :  
 MSVOA\_X  
 ClientSampleId :  
 TP03-MHM

Quant Time: May 29 03:35:11 2025  
 Quant Method : Z:\voasrv\HPCHEM1\MSVOA\_X\Method\82X050525W.M  
 Quant Title : SW846 8260  
 QLast Update : Tue May 06 07:12:22 2025  
 Response via : Initial Calibration

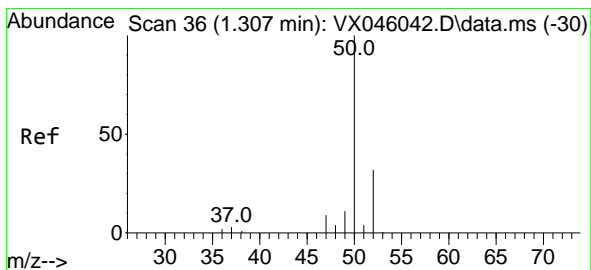
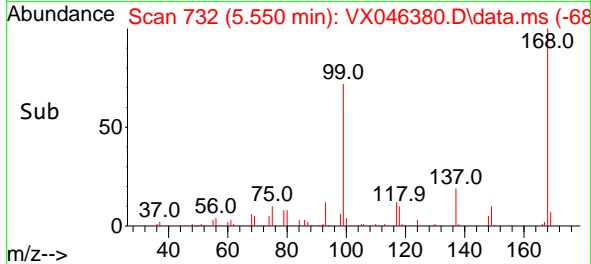
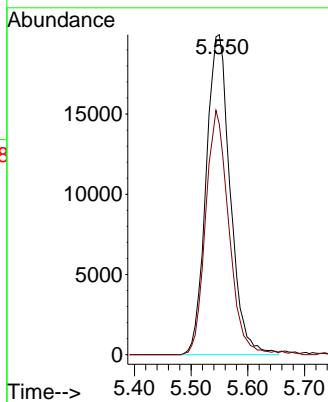
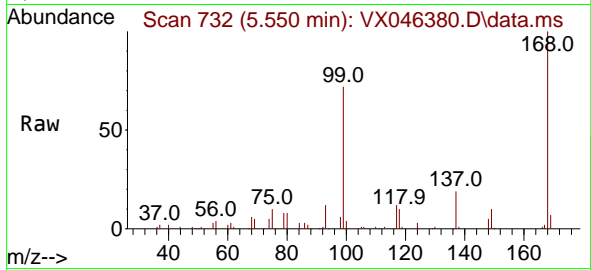




#1  
 Pentafluorobenzene  
 Concen: 50.000 ug/l  
 RT: 5.550 min Scan# 71  
 Delta R.T. 0.006 min  
 Lab File: VX046380.D  
 Acq: 28 May 2025 13:06

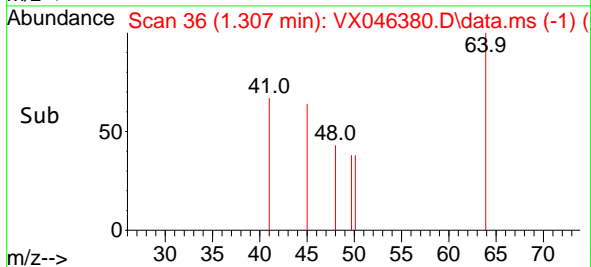
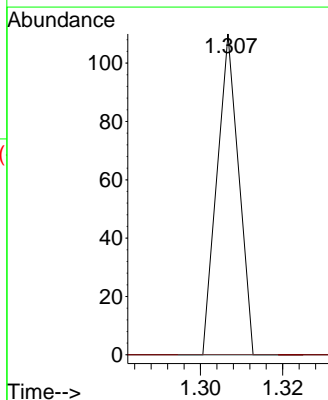
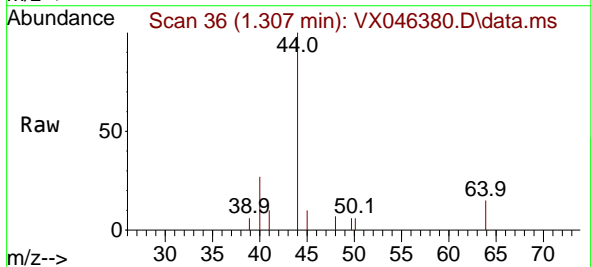
Instrument :  
 MSVOA\_X  
 ClientSampleId :  
 TP03-MHM

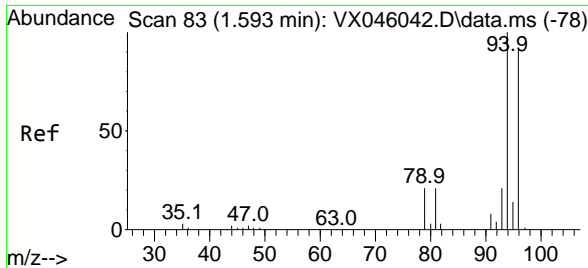
Tgt Ion:168 Resp: 58821  
 Ion Ratio Lower Upper  
 168 100  
 99 72.0 54.9 82.3



#3  
 Chloromethane  
 Concen: 0.046 ug/l  
 RT: 1.307 min Scan# 36  
 Delta R.T. 0.000 min  
 Lab File: VX046380.D  
 Acq: 28 May 2025 13:06

Tgt Ion: 50 Resp: 40  
 Ion Ratio Lower Upper  
 50 100  
 52 0.0 25.4 38.2#

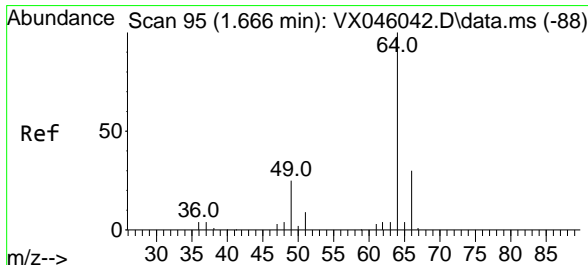
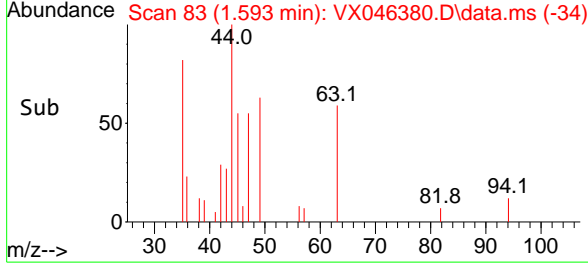
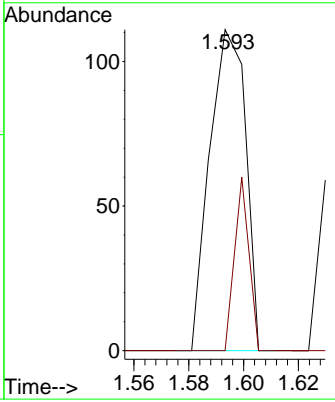
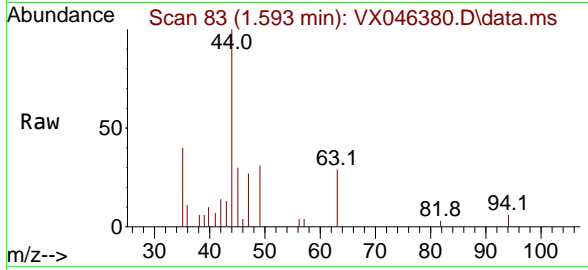




#5  
 Bromomethane  
 Concen: 0.268 ug/l  
 RT: 1.593 min Scan# 81  
 Delta R.T. 0.000 min  
 Lab File: VX046380.D  
 Acq: 28 May 2025 13:06

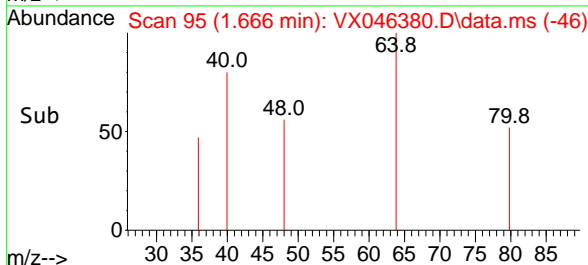
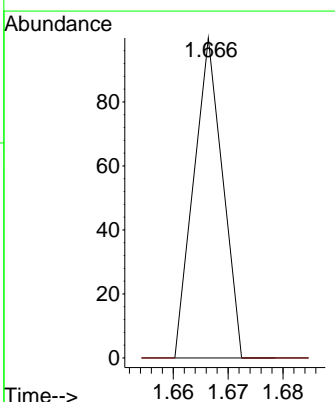
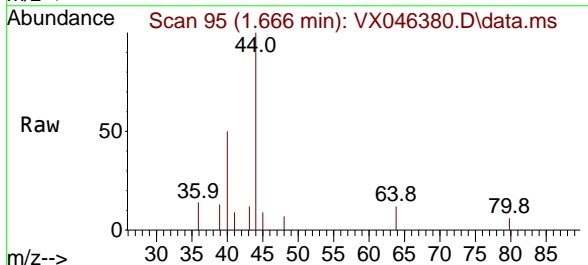
Instrument : MSVOA\_X  
 ClientSampleId : TP03-MHM

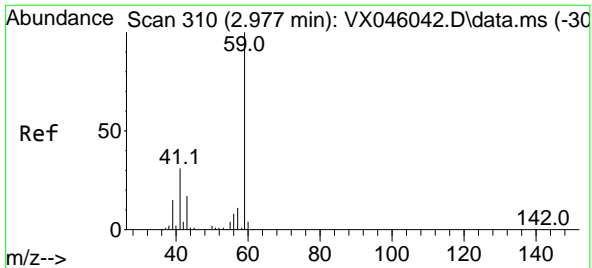
Tgt Ion: 94 Resp: 101  
 Ion Ratio Lower Upper  
 94 100  
 96 0.0 72.8 109.2#



#6  
 Chloroethane  
 Concen: 0.085 ug/l  
 RT: 1.666 min Scan# 95  
 Delta R.T. 0.000 min  
 Lab File: VX046380.D  
 Acq: 28 May 2025 13:06

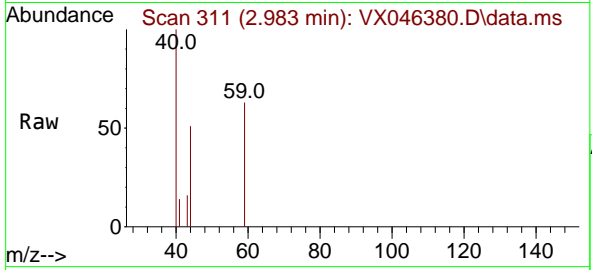
Tgt Ion: 64 Resp: 37  
 Ion Ratio Lower Upper  
 64 100  
 66 0.0 24.3 36.5#



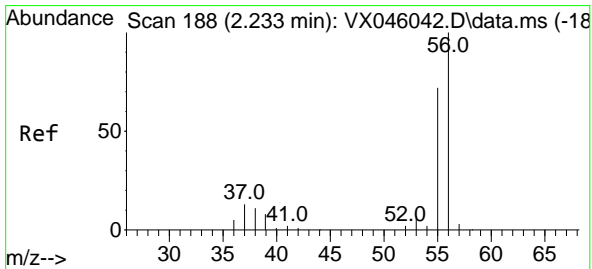
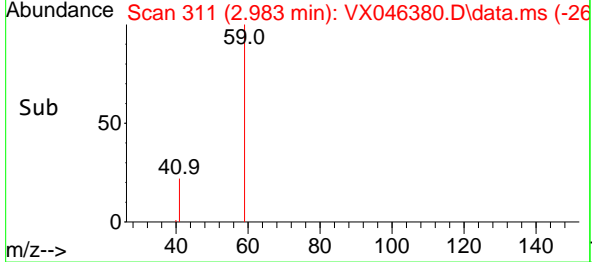
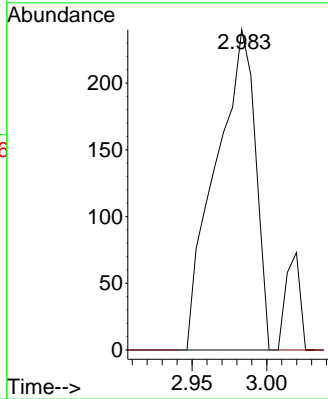


#11  
 Tert butyl alcohol  
 Concen: 2.871 ug/l  
 RT: 2.983 min Scan# 311  
 Delta R.T. 0.006 min  
 Lab File: VX046380.D  
 Acq: 28 May 2025 13:06

Instrument : MSVOA\_X  
 ClientSampleId : TP03-MHM

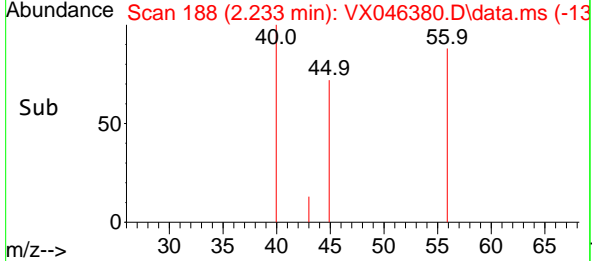
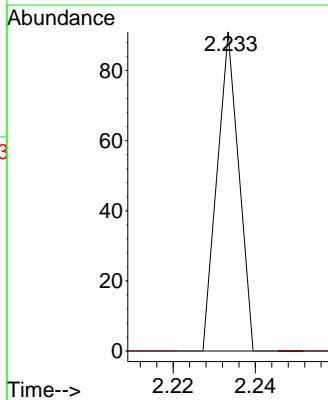
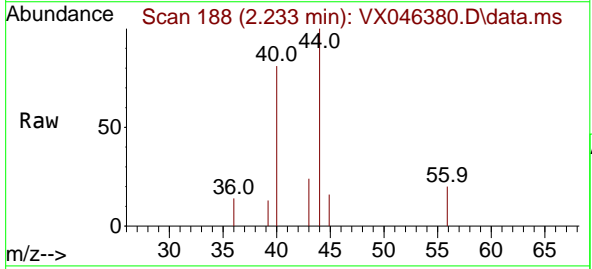


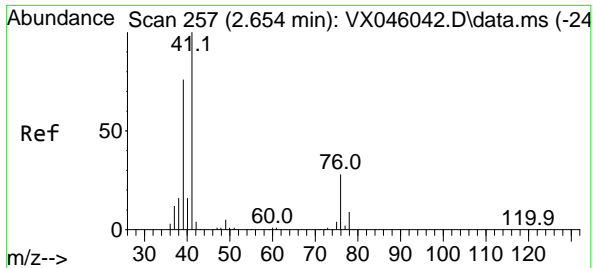
Tgt Ion: 59 Resp: 442  
 Ion Ratio Lower Upper  
 59 100  
 57 0.0 8.6 12.8#



#13  
 Acrolein  
 Concen: 0.188 ug/l  
 RT: 2.233 min Scan# 188  
 Delta R.T. 0.000 min  
 Lab File: VX046380.D  
 Acq: 28 May 2025 13:06

Tgt Ion: 56 Resp: 33  
 Ion Ratio Lower Upper  
 56 100  
 55 0.0 56.2 84.4#



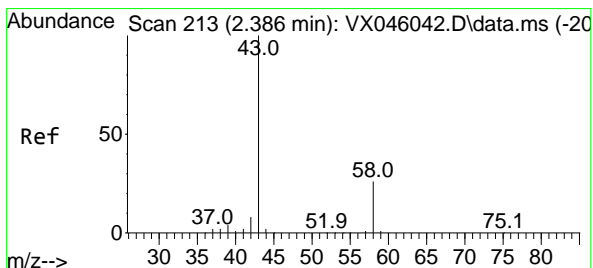
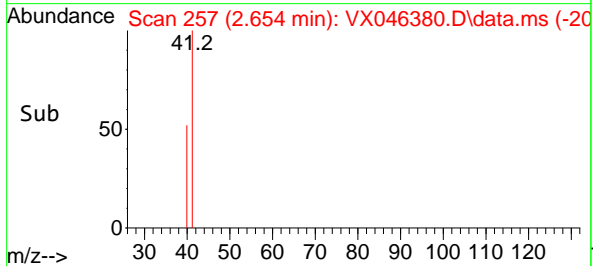
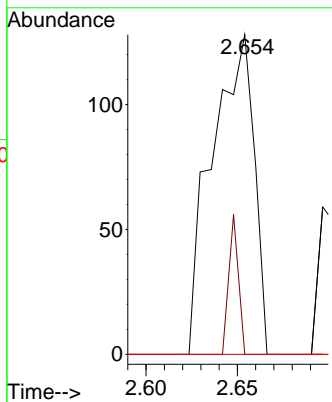
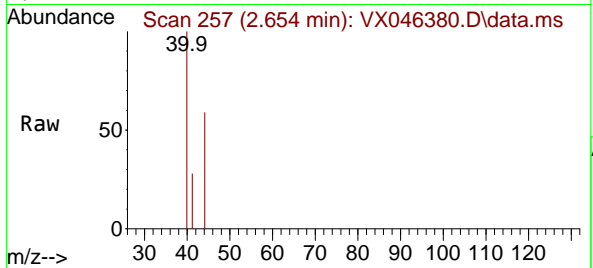


#14  
 Allyl chloride  
 Concen: 0.154 ug/l  
 RT: 2.654 min Scan# 213  
 Delta R.T. 0.000 min  
 Lab File: VX046380.D  
 Acq: 28 May 2025 13:06

Instrument : MSVOA\_X  
 ClientSampleId : TP03-MHM

Tgt Ion: 41 Resp: 205

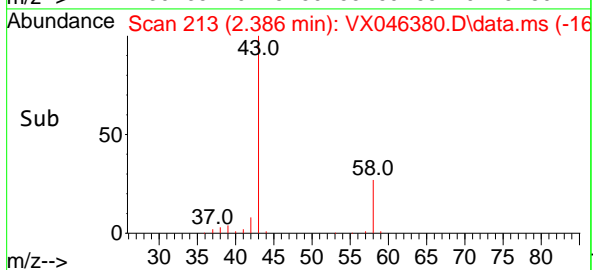
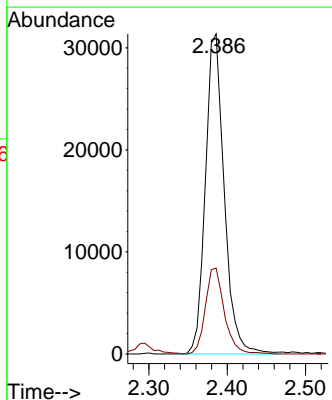
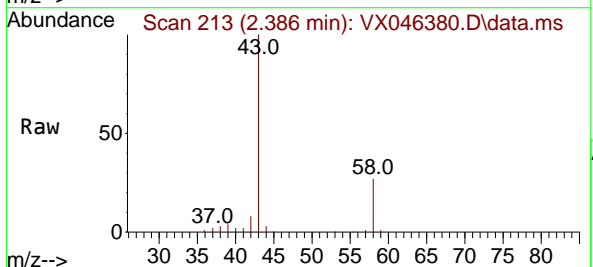
Ion	Ratio	Lower	Upper
41	100		
39	0.0	60.6	90.8#
76	0.0	24.9	37.3#

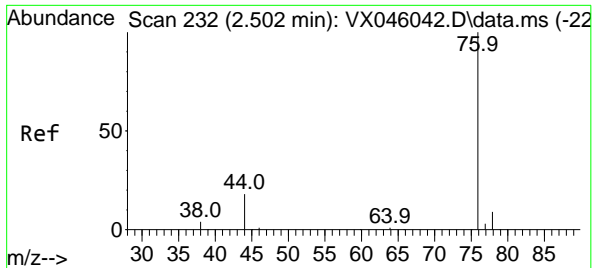


#16  
 Acetone  
 Concen: 119.038 ug/l  
 RT: 2.386 min Scan# 213  
 Delta R.T. 0.000 min  
 Lab File: VX046380.D  
 Acq: 28 May 2025 13:06

Tgt Ion: 43 Resp: 52340

Ion	Ratio	Lower	Upper
43	100		
58	26.8	21.2	31.8

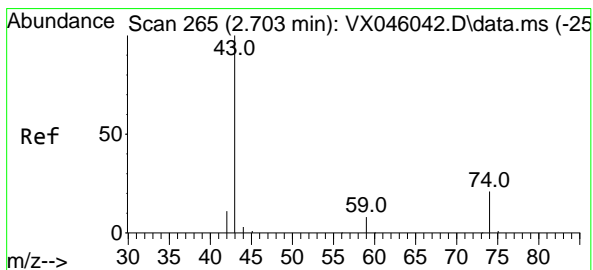
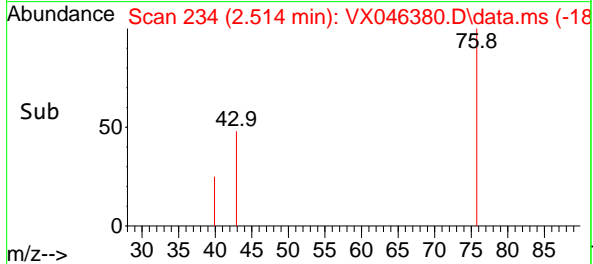
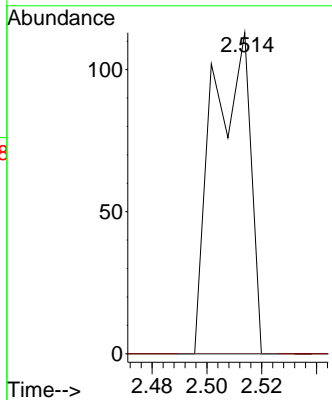
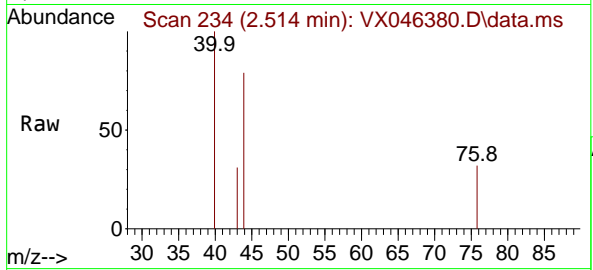




#17  
 Carbon Disulfide  
 Concen: 0.064 ug/l  
 RT: 2.514 min Scan# 21  
 Delta R.T. 0.012 min  
 Lab File: VX046380.D  
 Acq: 28 May 2025 13:06

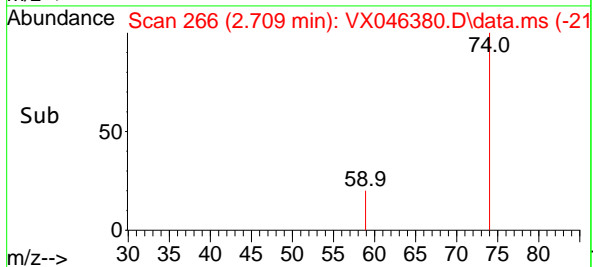
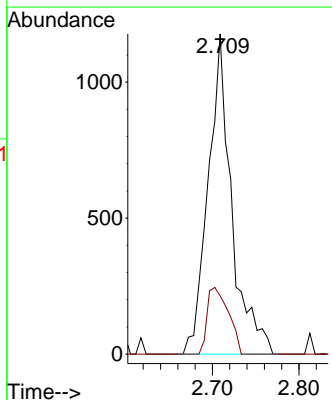
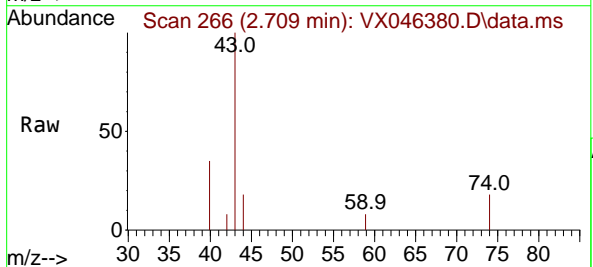
Instrument :  
 MSVOA\_X  
 ClientSampleId :  
 TP03-MHM

Tgt Ion: 76 Resp: 106  
 Ion Ratio Lower Upper  
 76 100  
 78 0.0 7.0 10.4#

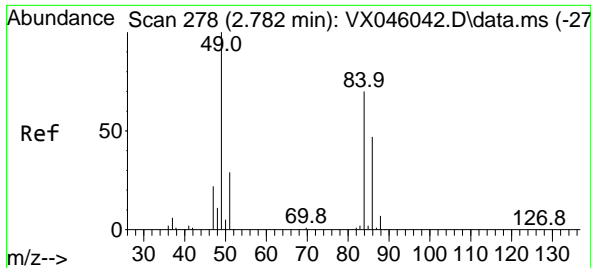


#18  
 Methyl Acetate  
 Concen: 2.175 ug/l  
 RT: 2.709 min Scan# 266  
 Delta R.T. 0.006 min  
 Lab File: VX046380.D  
 Acq: 28 May 2025 13:06

Tgt Ion: 43 Resp: 2219  
 Ion Ratio Lower Upper  
 43 100  
 74 18.8 16.7 25.1





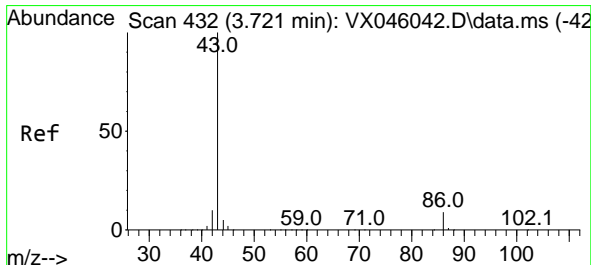
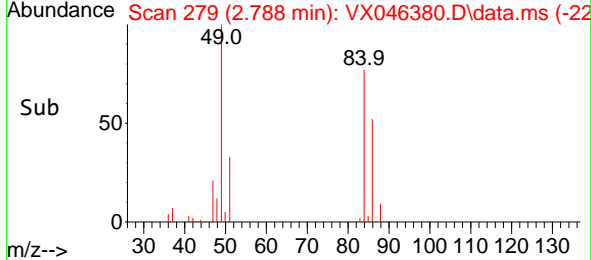
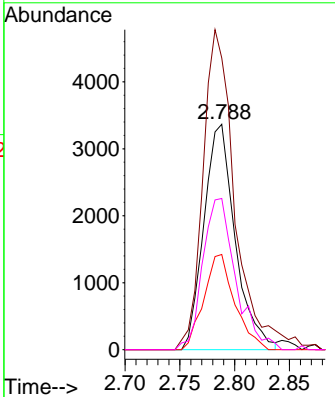
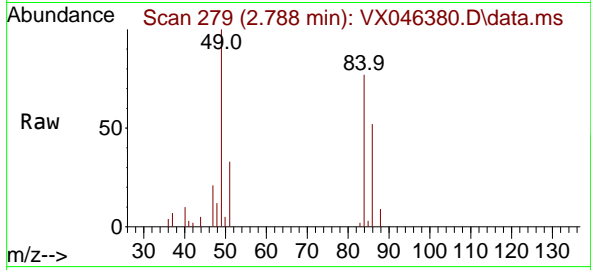


#20  
 Methylene Chloride  
 Concen: 7.949 ug/l  
 RT: 2.788 min Scan# 21  
 Delta R.T. 0.006 min  
 Lab File: VX046380.D  
 Acq: 28 May 2025 13:06

Instrument : MSVOA\_X  
 ClientSampleId : TP03-MHM

Tgt Ion: 84 Resp: 6698

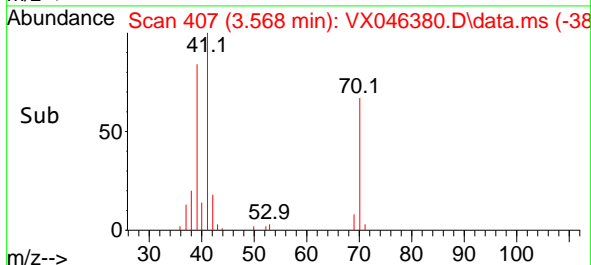
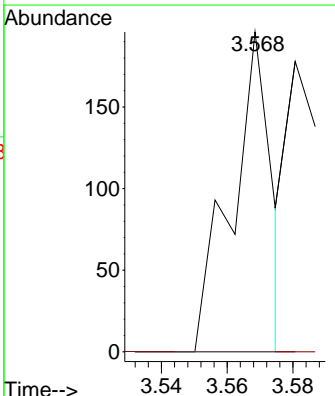
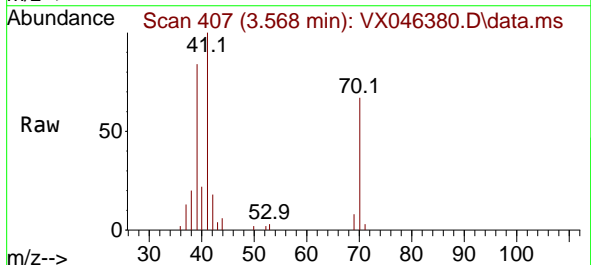
Ion	Ratio	Lower	Upper
84	100		
49	129.4	113.9	170.9
51	42.2	33.5	50.3
86	67.1	53.8	80.8

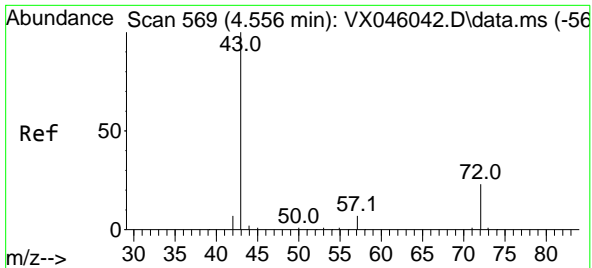


#23  
 Vinyl Acetate  
 Concen: 0.072 ug/l  
 RT: 3.568 min Scan# 407  
 Delta R.T. -0.152 min  
 Lab File: VX046380.D  
 Acq: 28 May 2025 13:06

Tgt Ion: 43 Resp: 164

Ion	Ratio	Lower	Upper
43	100		
86	0.0	7.5	11.3#

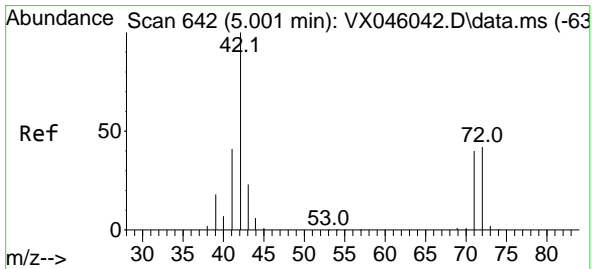
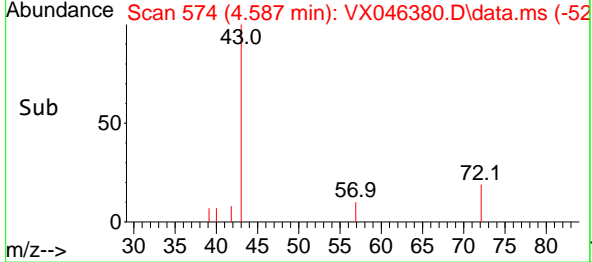
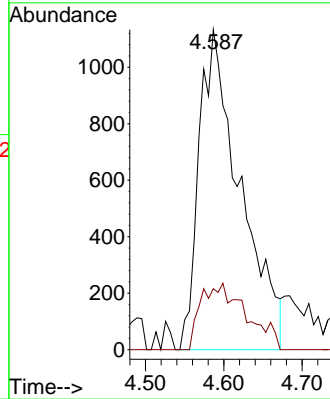
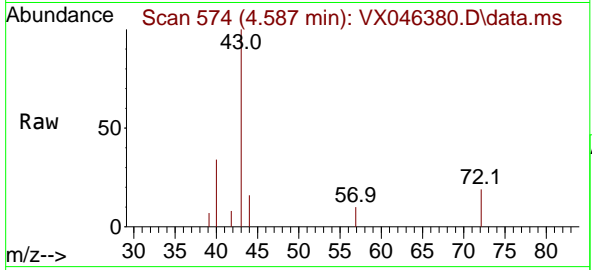




#25  
 2-Butanone  
 Concen: 6.486 ug/l  
 RT: 4.587 min Scan# 51  
 Delta R.T. 0.030 min  
 Lab File: VX046380.D  
 Acq: 28 May 2025 13:06

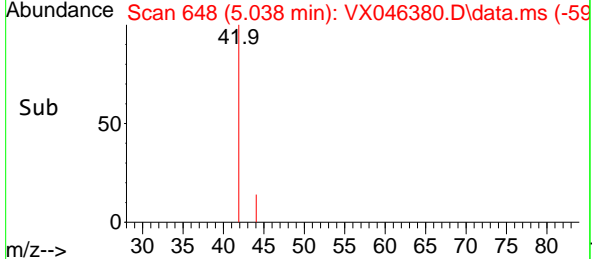
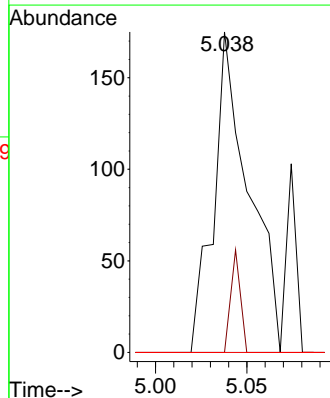
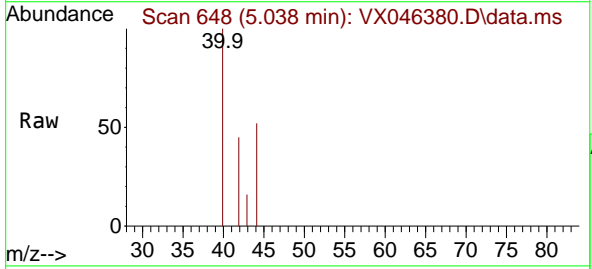
Instrument : MSVOA\_X  
 ClientSampleId : TP03-MHM

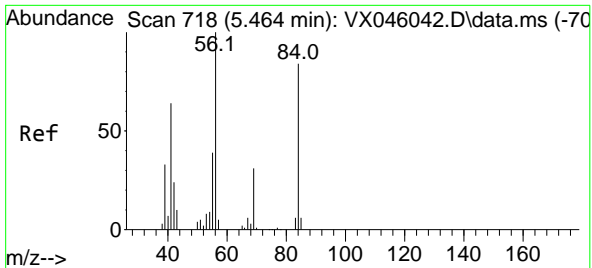
Tgt Ion	Resp	Ion Ratio	Lower	Upper
43	4140	100		
72	19.1	18.4	18.4	27.6



#29  
 Tetrahydrofuran  
 Concen: 0.588 ug/l  
 RT: 5.038 min Scan# 648  
 Delta R.T. 0.037 min  
 Lab File: VX046380.D  
 Acq: 28 May 2025 13:06

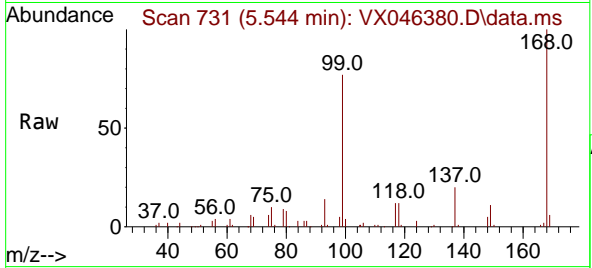
Tgt Ion	Resp	Ion Ratio	Lower	Upper
42	235	100		
72	8.5	33.7	33.7	50.5#
71	0.0	31.4	31.4	47.2#





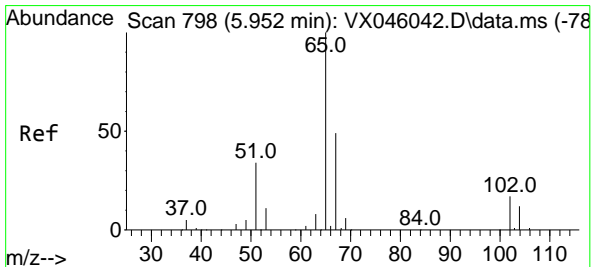
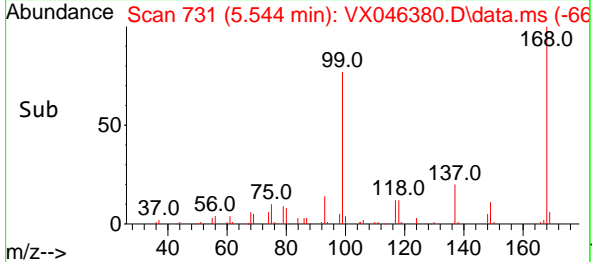
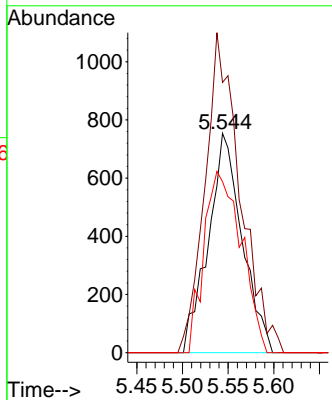
#31  
 Cyclohexane  
 Concen: 1.489 ug/l  
 RT: 5.544 min Scan# 718  
 Delta R.T. 0.079 min  
 Lab File: VX046380.D  
 Acq: 28 May 2025 13:06

Instrument : MSVOA\_X  
 ClientSampleId : TP03-MHM



Tgt Ion: 56 Resp: 1946

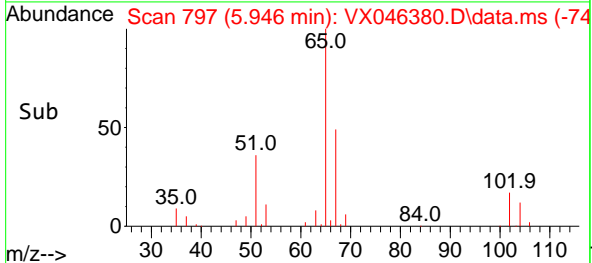
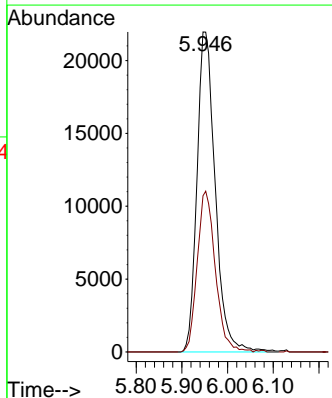
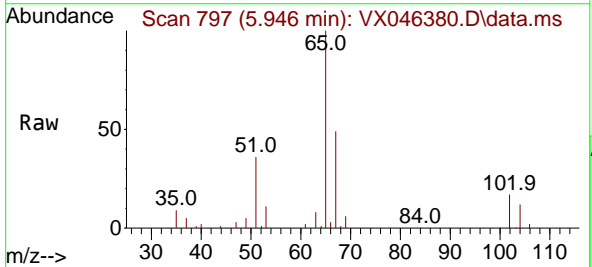
Ion	Ratio	Lower	Upper
56	100		
69	123.2	24.4	36.6#
84	78.0	66.9	100.3

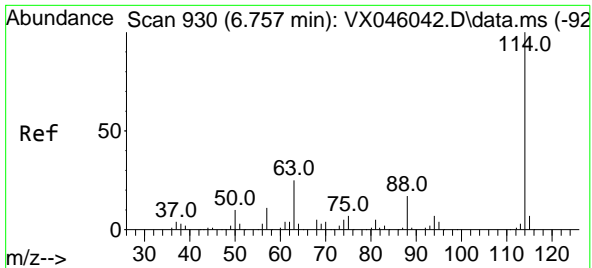


#33  
 1,2-Dichloroethane-d4  
 Concen: 55.488 ug/l  
 RT: 5.946 min Scan# 797  
 Delta R.T. -0.006 min  
 Lab File: VX046380.D  
 Acq: 28 May 2025 13:06

Tgt Ion: 65 Resp: 60849

Ion	Ratio	Lower	Upper
65	100		
67	49.8	0.0	99.0



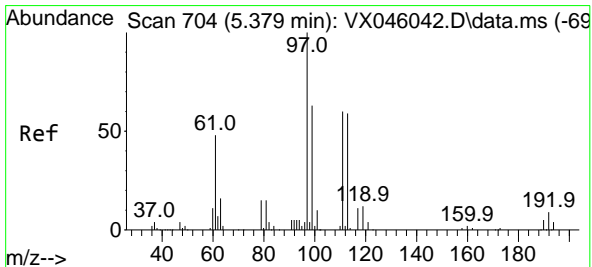
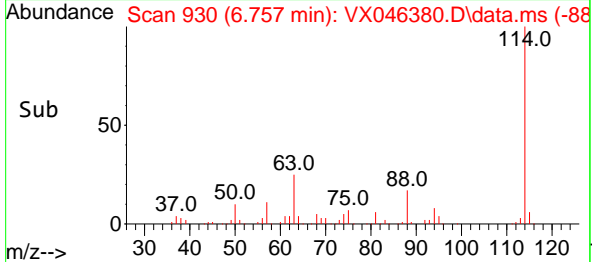
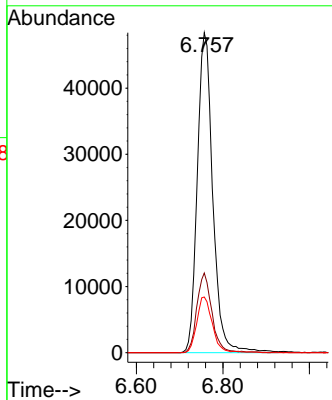
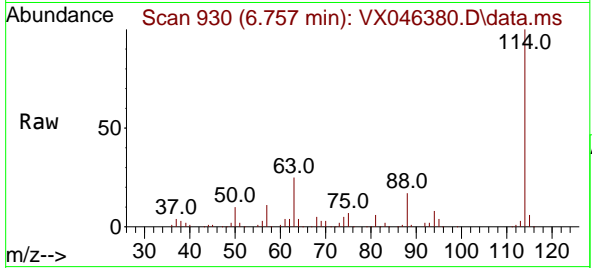


#34  
 1,4-Difluorobenzene  
 Concen: 50.000 ug/l  
 RT: 6.757 min Scan# 91  
 Delta R.T. -0.000 min  
 Lab File: VX046380.D  
 Acq: 28 May 2025 13:06

Instrument : MSVOA\_X  
 ClientSampleId : TP03-MHM

Tgt Ion:114 Resp: 120109

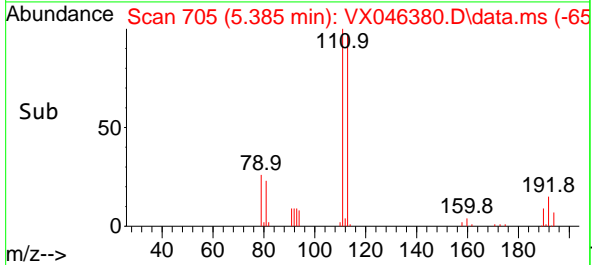
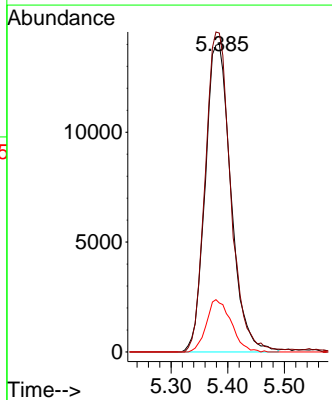
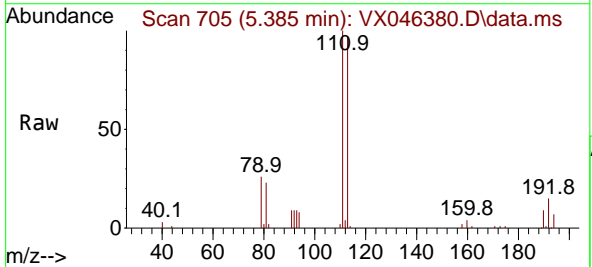
Ion	Ratio	Lower	Upper
114	100		
63	24.9	0.0	49.2
88	17.4	0.0	33.6

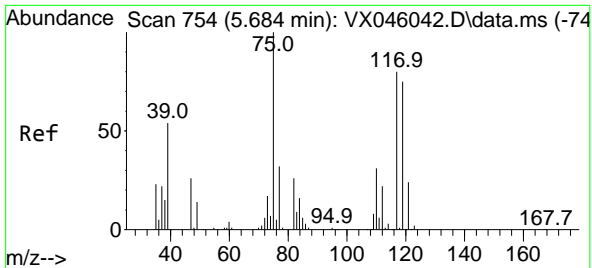


#35  
 Dibromofluoromethane  
 Concen: 50.988 ug/l  
 RT: 5.385 min Scan# 705  
 Delta R.T. 0.006 min  
 Lab File: VX046380.D  
 Acq: 28 May 2025 13:06

Tgt Ion:113 Resp: 44100

Ion	Ratio	Lower	Upper
113	100		
111	102.4	83.1	124.7
192	16.3	13.3	19.9

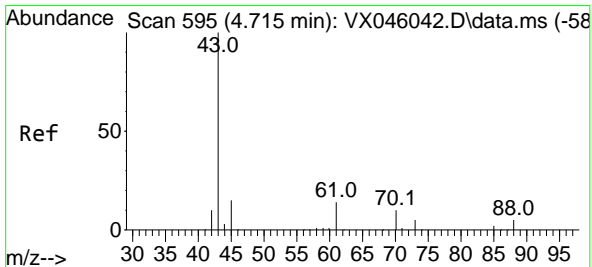
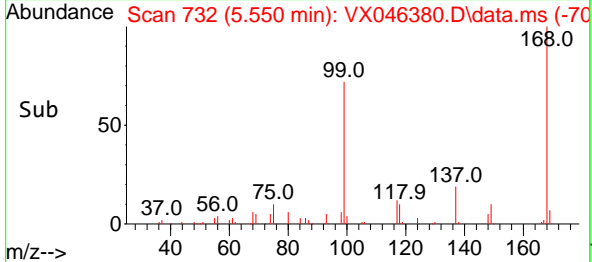
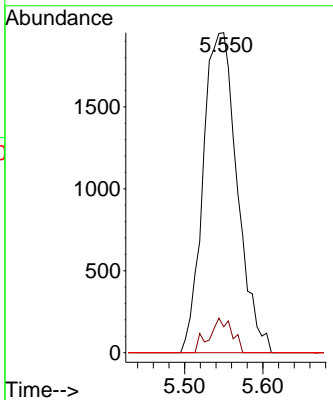
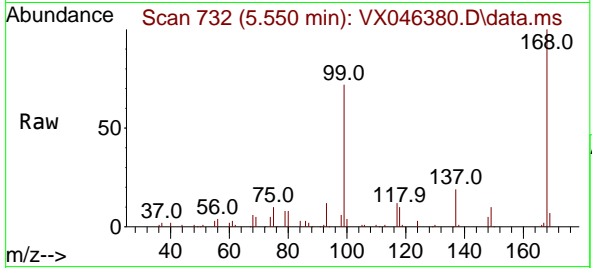




#36  
 1,1-Dichloropropene  
 Concen: 5.086 ug/l  
 RT: 5.550 min Scan# 71  
 Delta R.T. -0.134 min  
 Lab File: VX046380.D  
 Acq: 28 May 2025 13:06

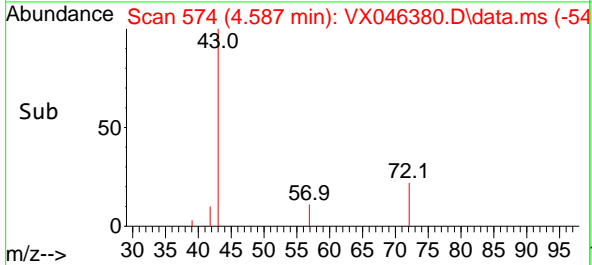
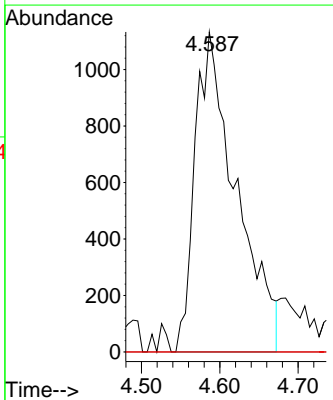
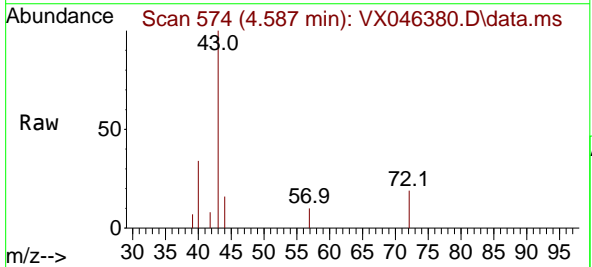
Instrument : MSVOA\_X  
 ClientSampleId : TP03-MHM

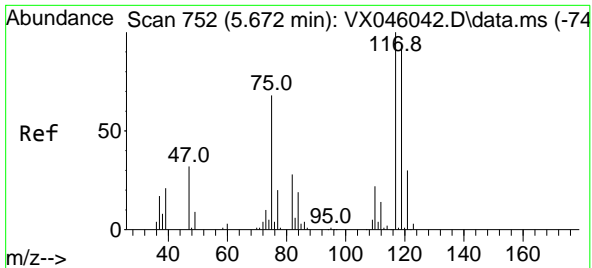
Tgt Ion	Resp	Lower	Upper
75	5910		
75	100		
110	7.2	16.3	48.9#
77	0.0	24.3	36.5#



#37  
 Ethyl Acetate  
 Concen: 2.883 ug/l  
 RT: 4.587 min Scan# 574  
 Delta R.T. -0.128 min  
 Lab File: VX046380.D  
 Acq: 28 May 2025 13:06

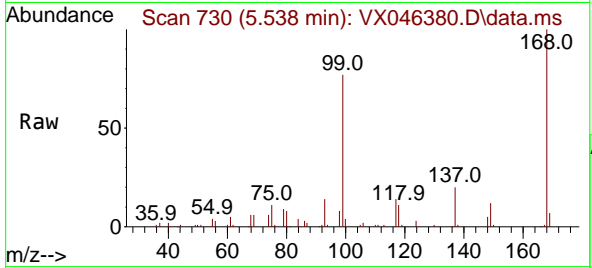
Tgt Ion	Resp	Lower	Upper
43	4140		
43	100		
61	0.0	10.3	15.5#
70	0.0	7.9	11.9#





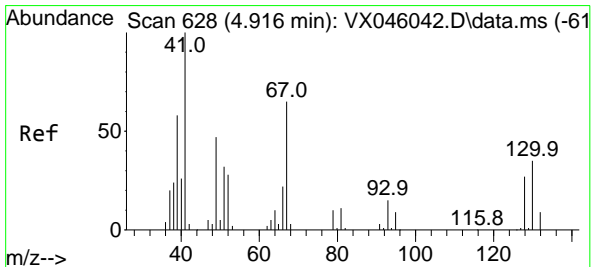
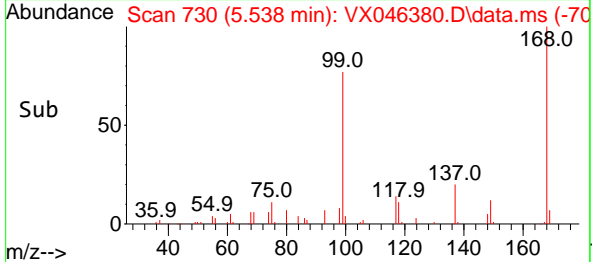
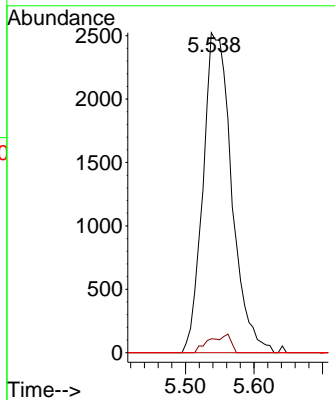
#38  
 Carbon Tetrachloride  
 Concen: 5.628 ug/l  
 RT: 5.538 min Scan# 711  
 Delta R.T. -0.134 min  
 Lab File: VX046380.D  
 Acq: 28 May 2025 13:06

Instrument : MSVOA\_X  
 Client Sample Id : TP03-MHM



Tgt Ion: 117 Resp: 7348

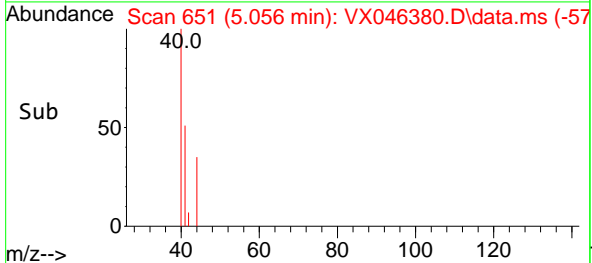
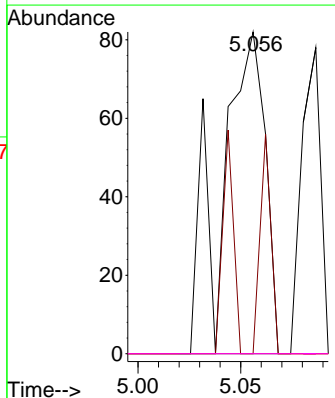
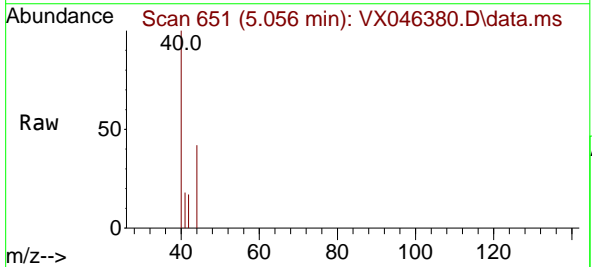
Ion	Ratio	Lower	Upper
117	100		
119	4.4	75.2	112.8#
121	0.0	24.2	36.4#

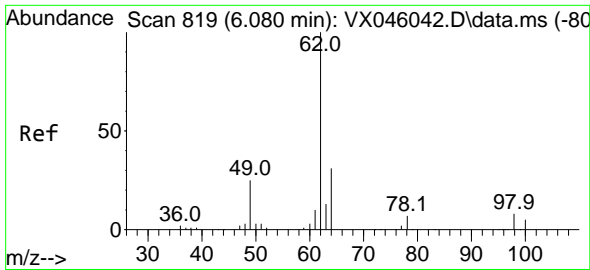


#41  
 Methacrylonitrile  
 Concen: 0.162 ug/l  
 RT: 5.056 min Scan# 651  
 Delta R.T. 0.140 min  
 Lab File: VX046380.D  
 Acq: 28 May 2025 13:06

Tgt Ion: 41 Resp: 122

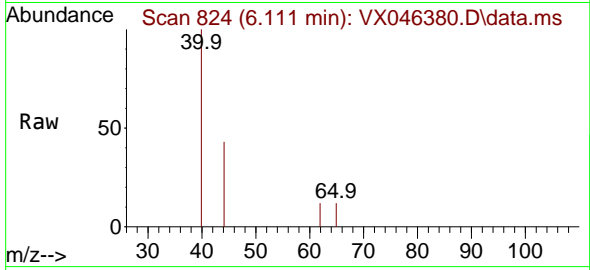
Ion	Ratio	Lower	Upper
41	100		
39	16.4	47.2	70.8#
67	0.0	50.7	76.1#
52	0.0	24.6	37.0#



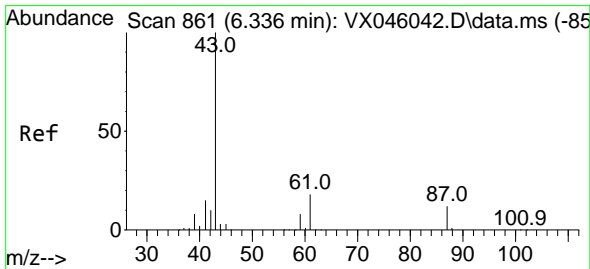
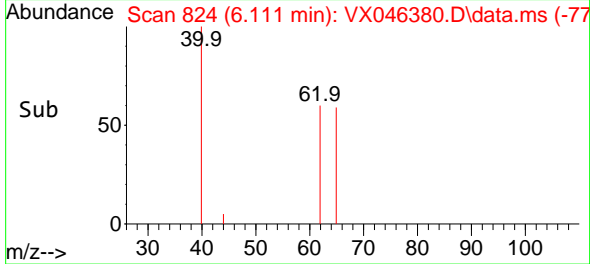
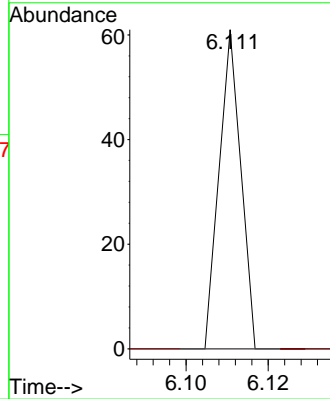


#42  
 1,2-Dichloroethane  
 Concen: 0.015 ug/l  
 RT: 6.111 min Scan# 819  
 Delta R.T. 0.030 min  
 Lab File: VX046380.D  
 Acq: 28 May 2025 13:06

Instrument :  
 MSVOA\_X  
 ClientSampleId :  
 TP03-MHM

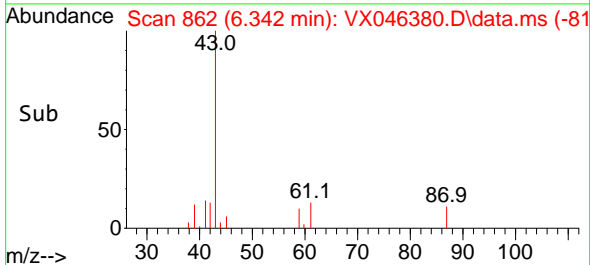
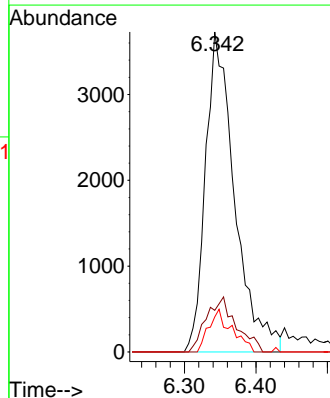
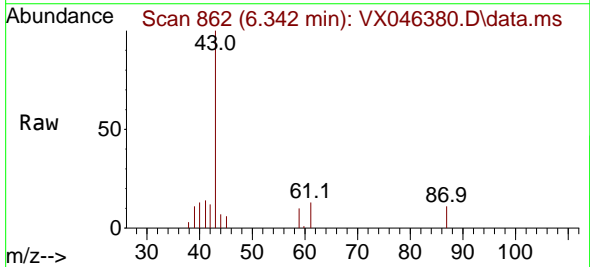


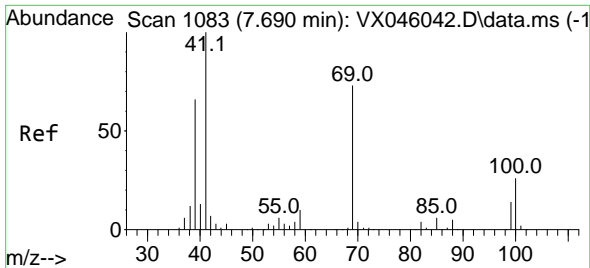
Tgt Ion: 62 Resp: 22  
 Ion Ratio Lower Upper  
 62 100  
 98 0.0 0.0 15.2



#43  
 Isopropyl Acetate  
 Concen: 4.836 ug/l  
 RT: 6.342 min Scan# 862  
 Delta R.T. 0.006 min  
 Lab File: VX046380.D  
 Acq: 28 May 2025 13:06

Tgt Ion: 43 Resp: 10592  
 Ion Ratio Lower Upper  
 43 100  
 61 17.5 14.3 21.5  
 87 10.4 9.5 14.3



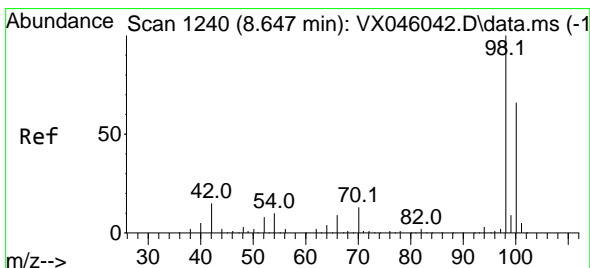
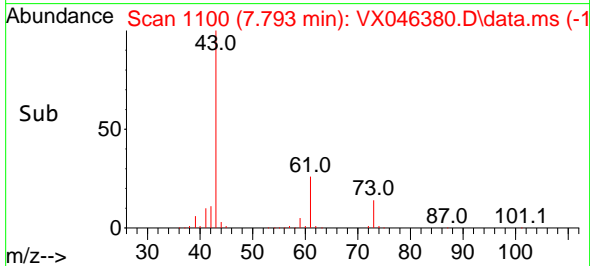
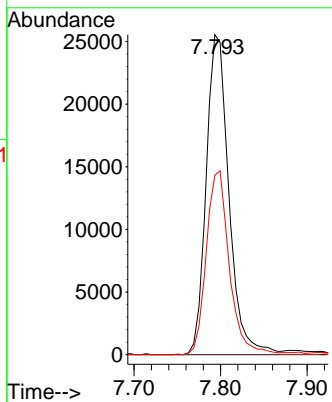
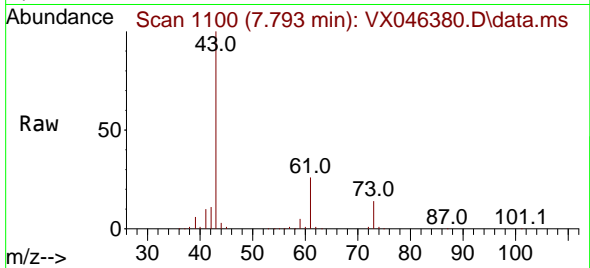


#48  
 Methyl methacrylate  
 Concen: 41.584 ug/l  
 RT: 7.793 min Scan# 1100  
 Delta R.T. 0.104 min  
 Lab File: VX046380.D  
 Acq: 28 May 2025 13:06

Instrument :  
 MSVOA\_X  
 ClientSampleId :  
 TP03-MHM

Tgt Ion: 41 Resp: 46517

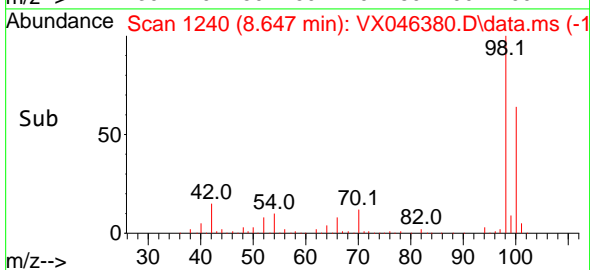
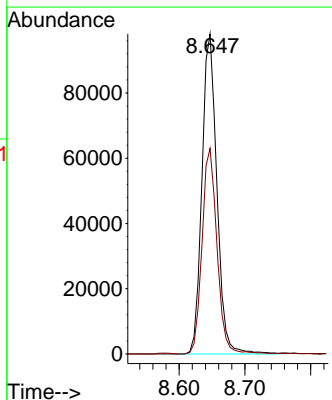
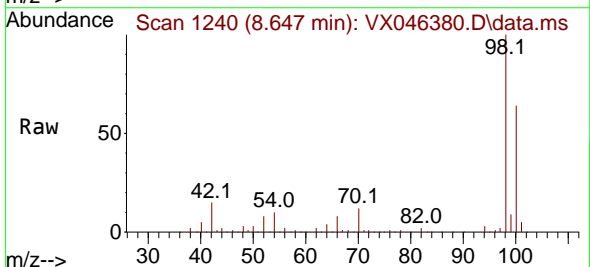
Ion	Ratio	Lower	Upper
41	100		
69	0.0	58.5	87.7#
39	58.5	51.7	77.5



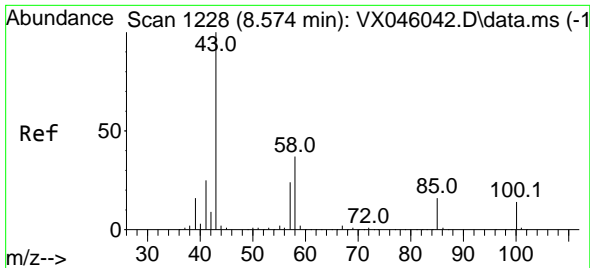
#50  
 Toluene-d8  
 Concen: 51.871 ug/l  
 RT: 8.647 min Scan# 1240  
 Delta R.T. 0.000 min  
 Lab File: VX046380.D  
 Acq: 28 May 2025 13:06

Tgt Ion: 98 Resp: 155280

Ion	Ratio	Lower	Upper
98	100		
100	64.2	53.5	80.3



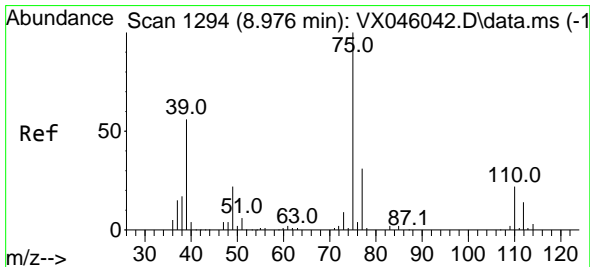
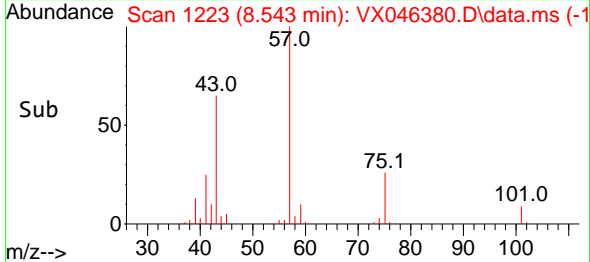
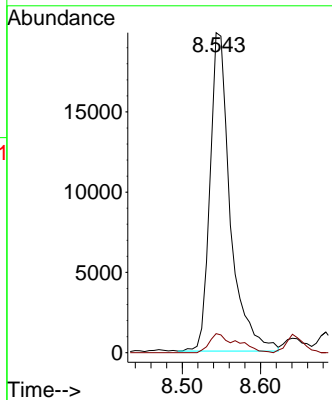
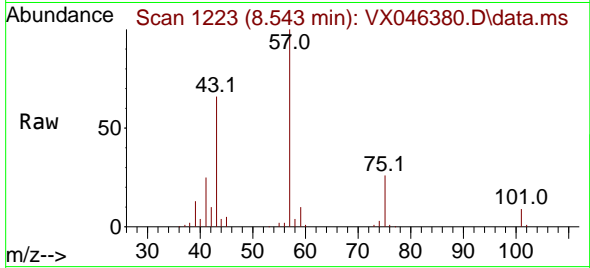




#51  
 4-Methyl-2-Pentanone  
 Concen: 24.487 ug/l  
 RT: 8.543 min Scan# 111  
 Delta R.T. -0.030 min  
 Lab File: VX046380.D  
 Acq: 28 May 2025 13:06

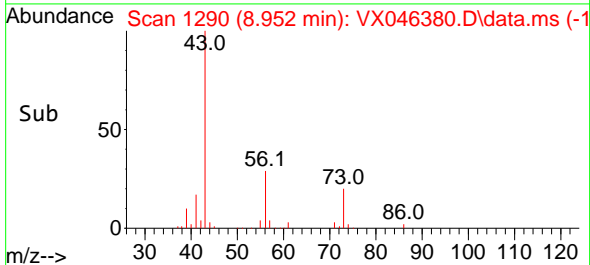
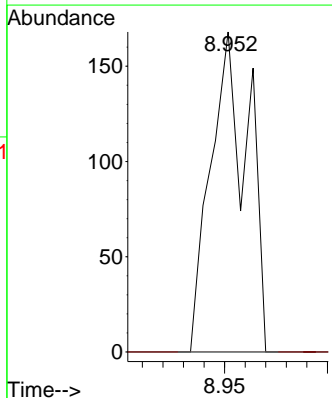
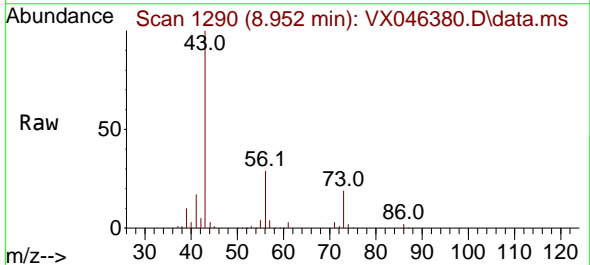
Instrument : MSVOA\_X  
 ClientSampleId : TP03-MHM

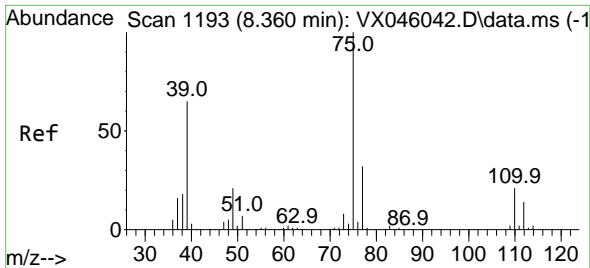
Tgt Ion: 43 Resp: 35602  
 Ion Ratio Lower Upper  
 43 100  
 58 8.1 28.9 43.3#



#53  
 t-1,3-Dichloropropene  
 Concen: 0.181 ug/l  
 RT: 8.952 min Scan# 1290  
 Delta R.T. -0.024 min  
 Lab File: VX046380.D  
 Acq: 28 May 2025 13:06

Tgt Ion: 75 Resp: 212  
 Ion Ratio Lower Upper  
 75 100  
 77 0.0 25.0 37.6#



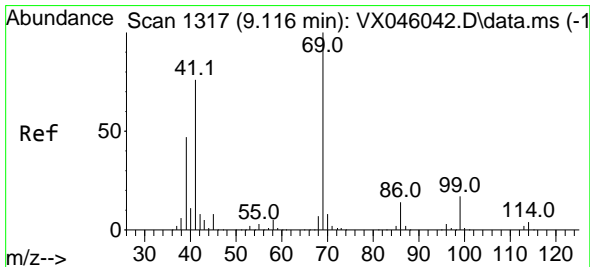
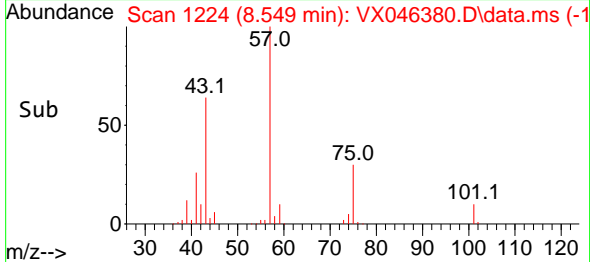
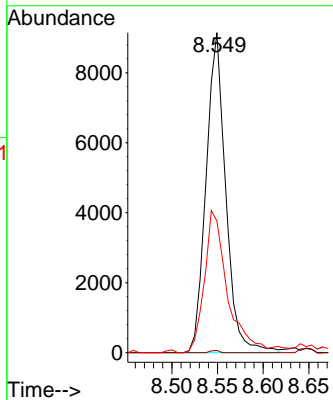
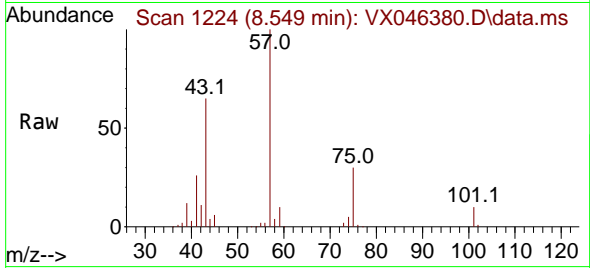


#54  
 cis-1,3-Dichloropropene  
 Concen: 10.578 ug/l  
 RT: 8.549 min Scan# 1193  
 Delta R.T. 0.189 min  
 Lab File: VX046380.D  
 Acq: 28 May 2025 13:06

Instrument : MSVOA\_X  
 ClientSampleId : TP03-MHM

Tgt Ion: 75 Resp: 13663

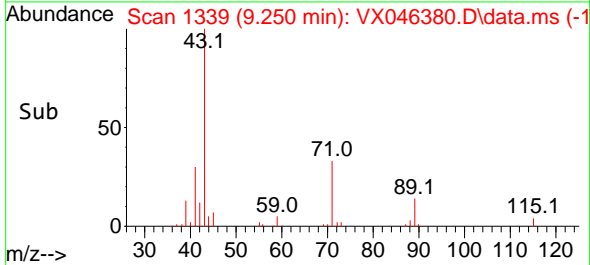
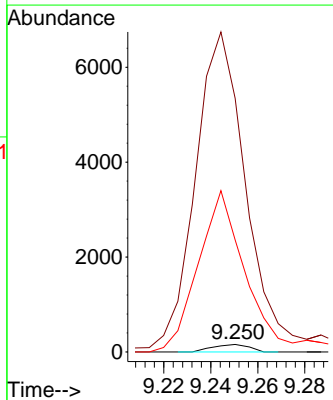
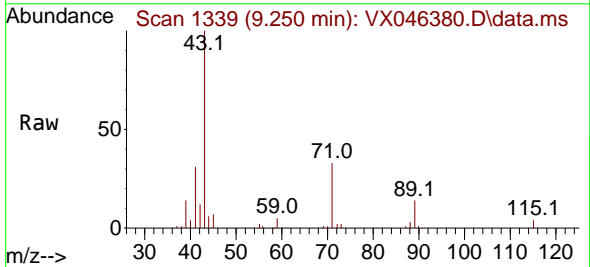
Ion	Ratio	Lower	Upper
75	100		
77	0.7	25.4	38.0#
39	41.1	52.2	78.4#

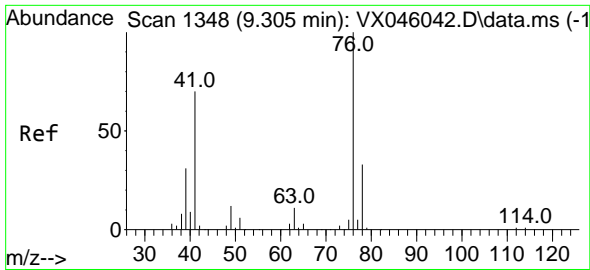


#56  
 Ethyl methacrylate  
 Concen: 0.131 ug/l  
 RT: 9.250 min Scan# 1339  
 Delta R.T. 0.134 min  
 Lab File: VX046380.D  
 Acq: 28 May 2025 13:06

Tgt Ion: 69 Resp: 172

Ion	Ratio	Lower	Upper
69	100		
41	5950.0	60.8	91.2#
39	2841.3	39.0	58.6#

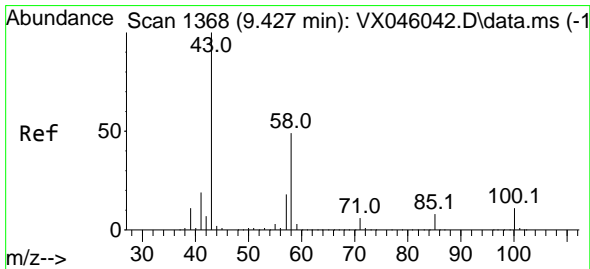
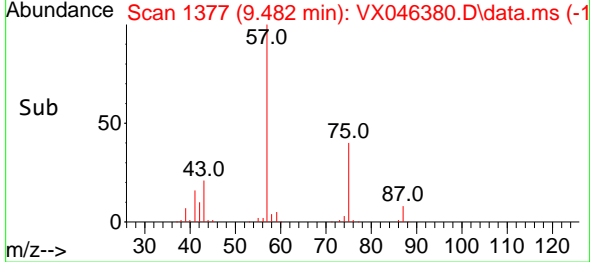
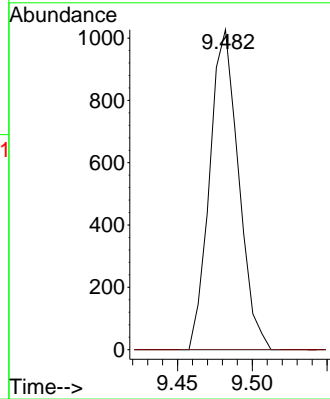
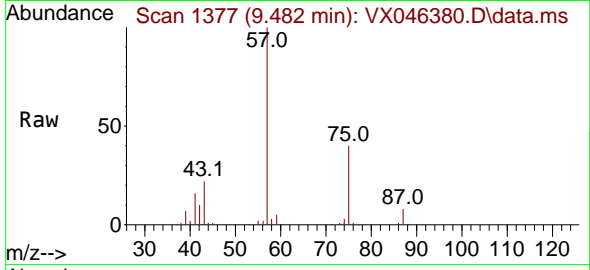




#57  
 1,3-Dichloropropane  
 Concen: 0.934 ug/l  
 RT: 9.482 min Scan# 1377  
 Delta R.T. 0.177 min  
 Lab File: VX046380.D  
 Acq: 28 May 2025 13:06

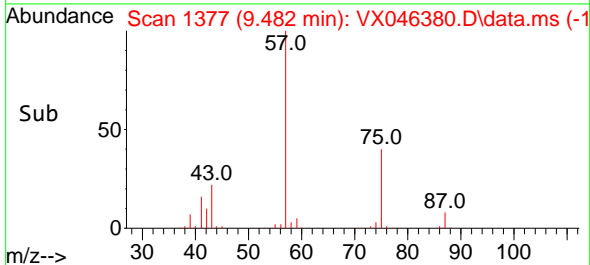
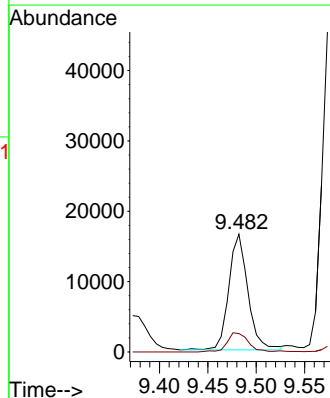
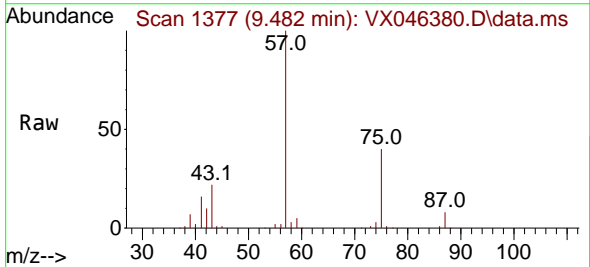
Instrument :  
 MSVOA\_X  
 ClientSampleId :  
 TP03-MHM

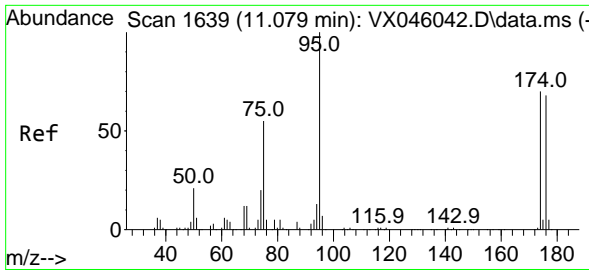
Tgt Ion: 76 Resp: 1380  
 Ion Ratio Lower Upper  
 76 100  
 78 0.0 26.3 39.5#



#59  
 2-Hexanone  
 Concen: 21.110 ug/l  
 RT: 9.482 min Scan# 1377  
 Delta R.T. 0.055 min  
 Lab File: VX046380.D  
 Acq: 28 May 2025 13:06

Tgt Ion: 43 Resp: 22707  
 Ion Ratio Lower Upper  
 43 100  
 58 18.2 24.9 74.6#

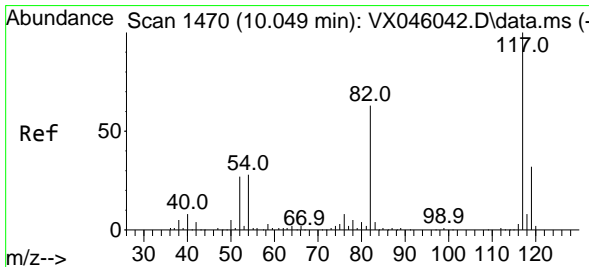
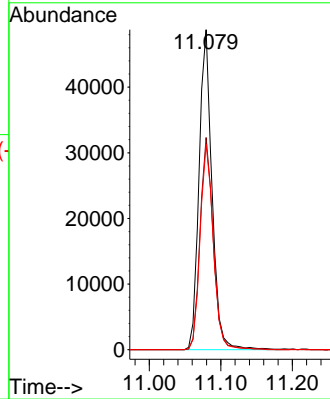
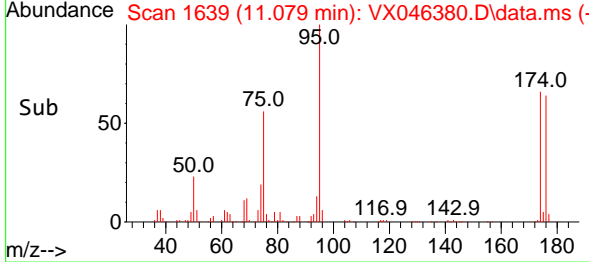
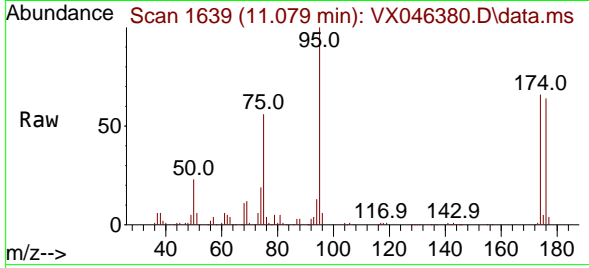




#62  
 4-Bromofluorobenzene  
 Concen: 53.214 ug/l  
 RT: 11.079 min Scan# 1639  
 Delta R.T. 0.000 min  
 Lab File: VX046380.D  
 Acq: 28 May 2025 13:06

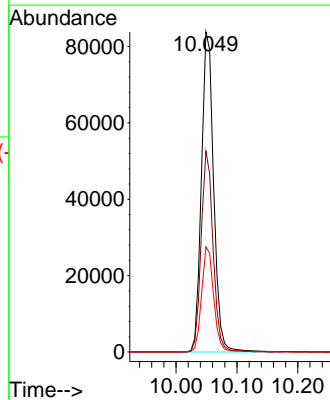
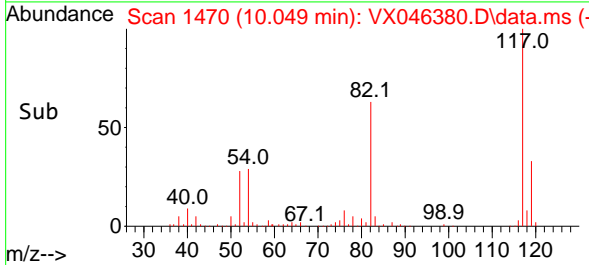
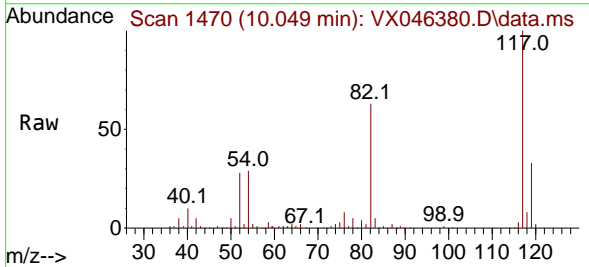
Instrument :  
 MSVOA\_X  
 ClientSampleId :  
 TP03-MHM

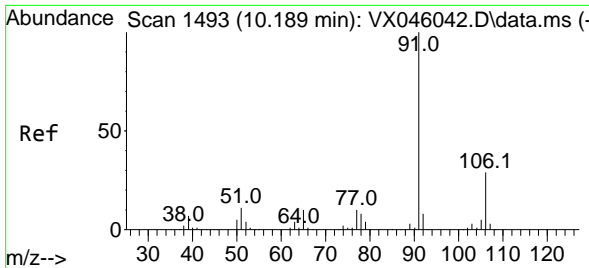
Tgt Ion	Resp	Lower	Upper
95	61105	100	
174	67.5	0.0	135.8
176	65.3	0.0	131.4



#63  
 Chlorobenzene-d5  
 Concen: 50.000 ug/l  
 RT: 10.049 min Scan# 1470  
 Delta R.T. 0.000 min  
 Lab File: VX046380.D  
 Acq: 28 May 2025 13:06

Tgt Ion	Resp	Lower	Upper
117	116923	100	
82	62.7	50.6	76.0
119	32.8	25.8	38.6

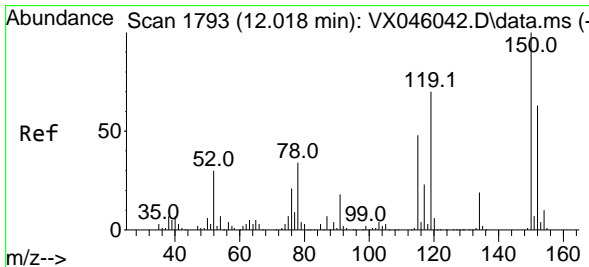
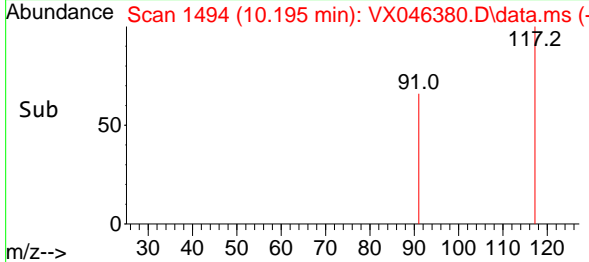
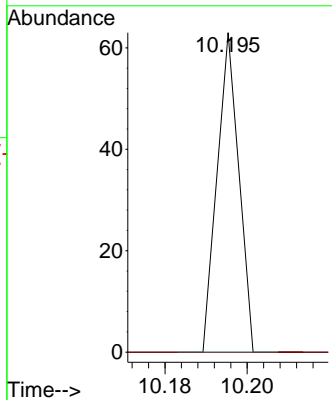
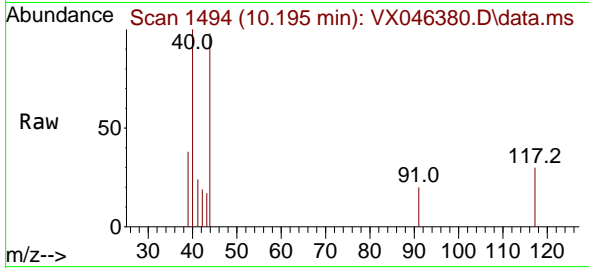




#67  
 Ethyl Benzene  
 Concen: 0.005 ug/l  
 RT: 10.195 min Scan# 1494  
 Delta R.T. 0.006 min  
 Lab File: VX046380.D  
 Acq: 28 May 2025 13:06

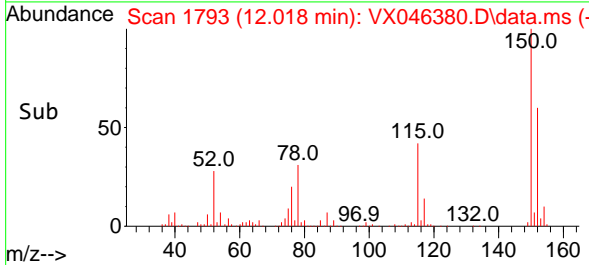
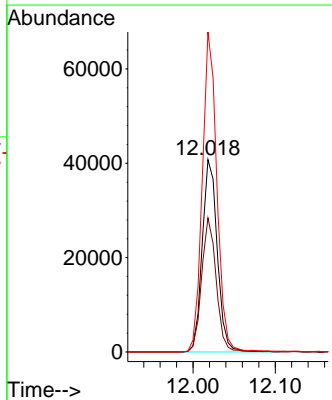
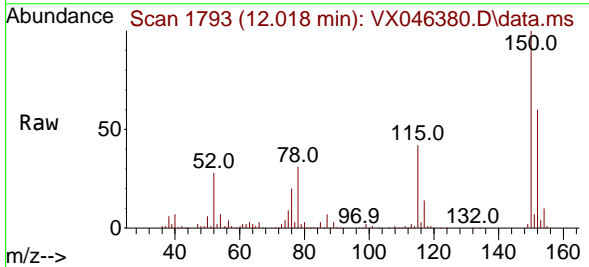
Instrument : MSVOA\_X  
 ClientSampleId : TP03-MHM

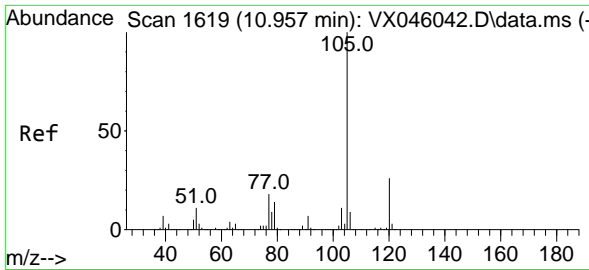
Tgt Ion: 91 Resp: 23  
 Ion Ratio Lower Upper  
 91 100  
 106 0.0 23.4 35.2#



#72  
 1,4-Dichlorobenzene-d4  
 Concen: 50.000 ug/l  
 RT: 12.018 min Scan# 1793  
 Delta R.T. -0.000 min  
 Lab File: VX046380.D  
 Acq: 28 May 2025 13:06

Tgt Ion:152 Resp: 52090  
 Ion Ratio Lower Upper  
 152 100  
 115 67.3 46.9 140.7  
 150 160.9 0.0 351.0

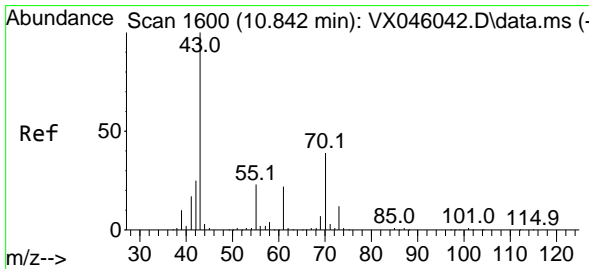
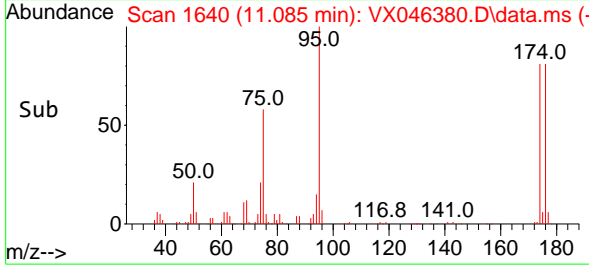
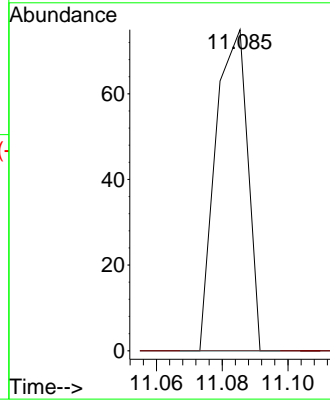
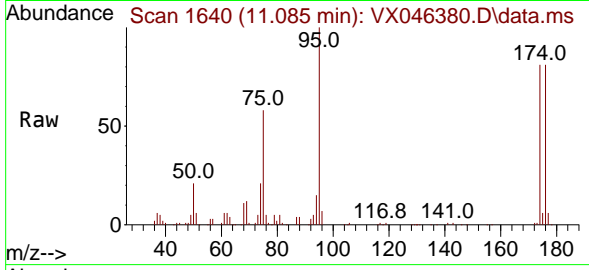




#73  
 Isopropylbenzene  
 Concen: 0.012 ug/l  
 RT: 11.085 min Scan# 1610  
 Delta R.T. 0.128 min  
 Lab File: VX046380.D  
 Acq: 28 May 2025 13:06

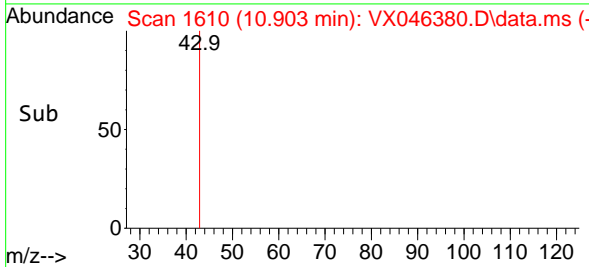
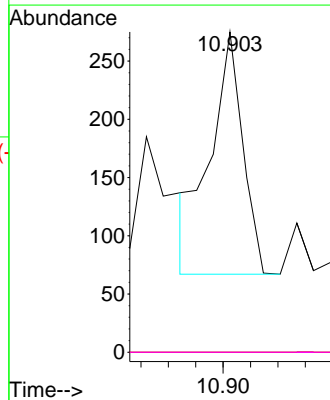
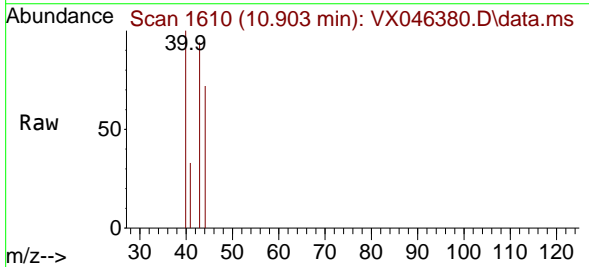
Instrument :  
 MSVOA\_X  
 ClientSampleId :  
 TP03-MHM

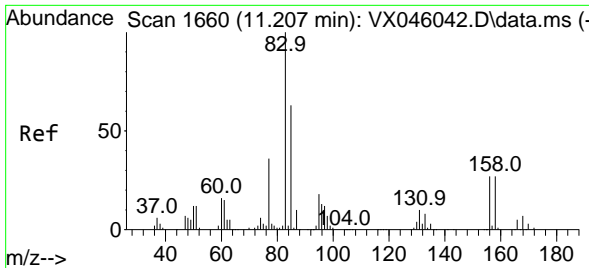
Tgt Ion:105 Resp: 50  
 Ion Ratio Lower Upper  
 105 100  
 120 0.0 12.8 38.4#



#74  
 N-amy1 acetate  
 Concen: 0.085 ug/l  
 RT: 10.903 min Scan# 1610  
 Delta R.T. 0.061 min  
 Lab File: VX046380.D  
 Acq: 28 May 2025 13:06

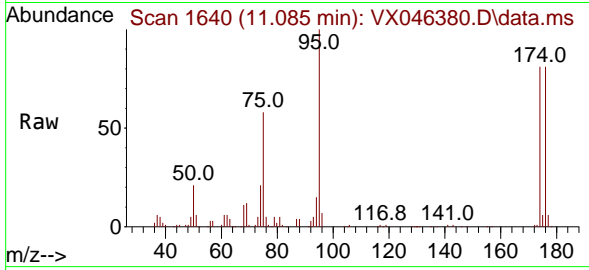
Tgt Ion: 43 Resp: 171  
 Ion Ratio Lower Upper  
 43 100  
 70 0.0 30.9 46.3#  
 55 0.0 18.7 28.1#  
 61 0.0 17.1 25.7#



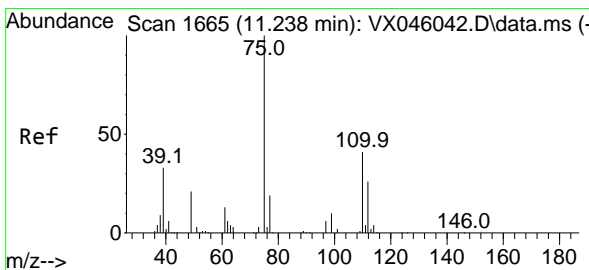
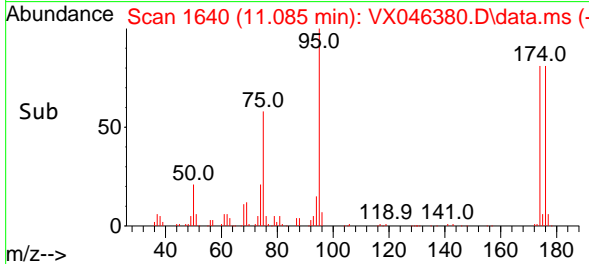
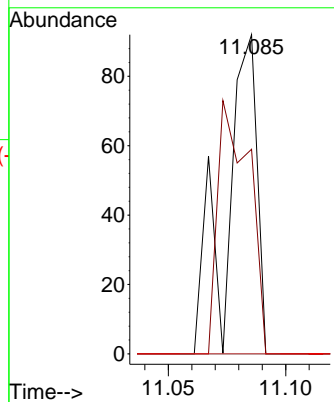


#75  
 1,1,2,2-Tetrachloroethane  
 Concen: 0.058 ug/l  
 RT: 11.085 min Scan# 1639  
 Delta R.T. -0.122 min  
 Lab File: VX046380.D  
 Acq: 28 May 2025 13:06

Instrument : MSVOA\_X  
 ClientSampleId : TP03-MHM

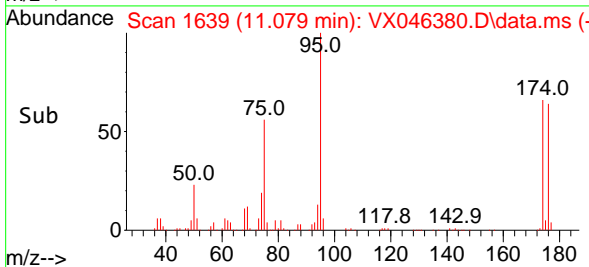
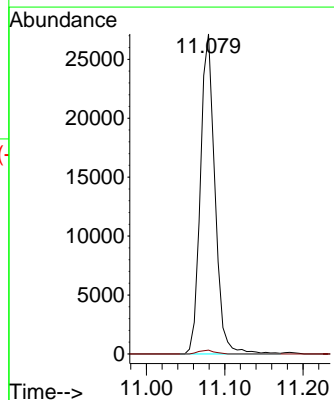
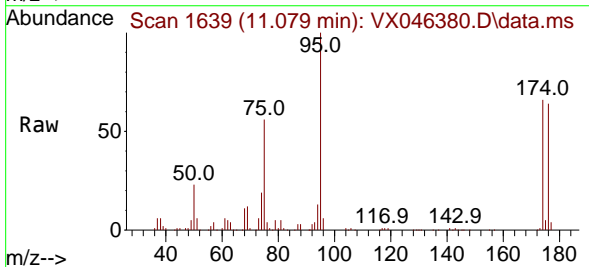


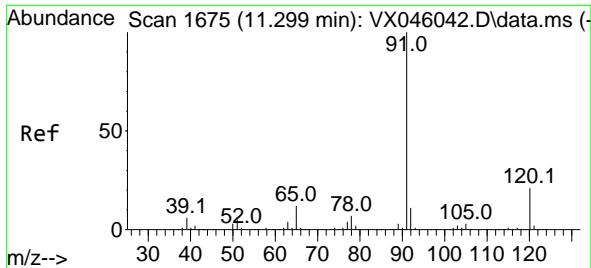
Tgt Ion: 83 Resp: 83  
 Ion Ratio Lower Upper  
 83 100  
 131 81.9 5.0 14.9#  
 85 0.0 31.9 95.7#



#76  
 1,2,3-Trichloropropane  
 Concen: 27.979 ug/l  
 RT: 11.079 min Scan# 1639  
 Delta R.T. -0.159 min  
 Lab File: VX046380.D  
 Acq: 28 May 2025 13:06

Tgt Ion: 75 Resp: 35081  
 Ion Ratio Lower Upper  
 75 100  
 77 1.3 20.5 61.5#

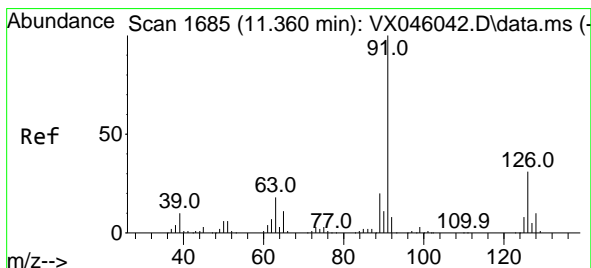
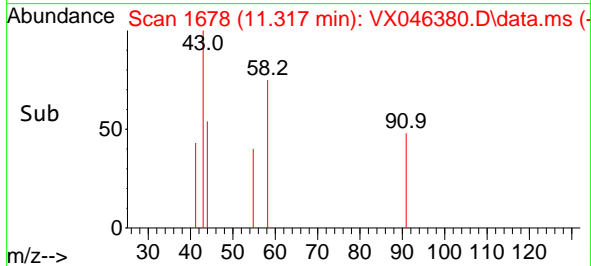
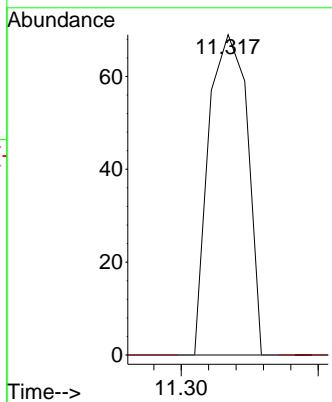
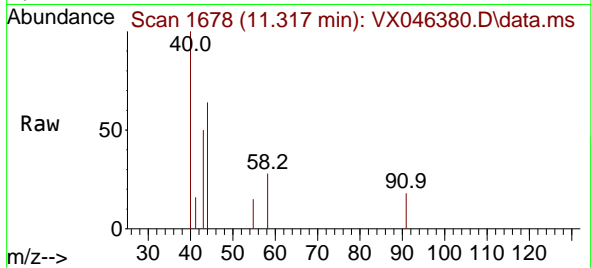




#78  
 n-propylbenzene  
 Concen: 0.014 ug/l  
 RT: 11.317 min Scan# 1678  
 Delta R.T. 0.018 min  
 Lab File: VX046380.D  
 Acq: 28 May 2025 13:06

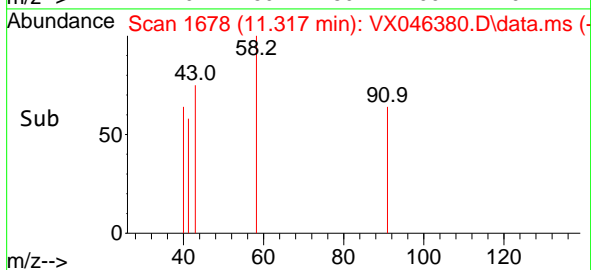
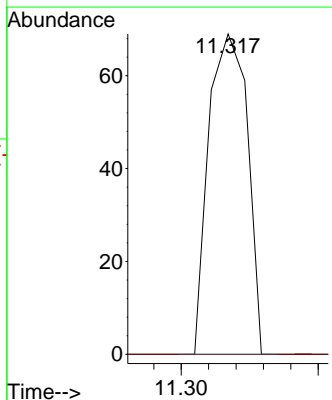
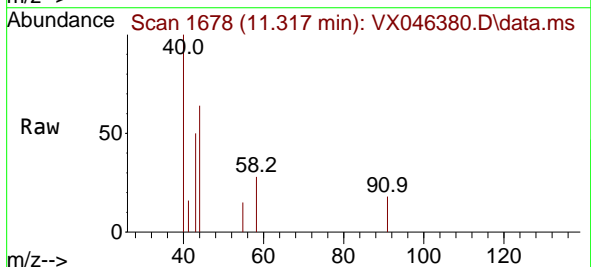
Instrument : MSVOA\_X  
 ClientSampleId : TP03-MHM

Tgt Ion: 91 Resp: 68  
 Ion Ratio Lower Upper  
 91 100  
 120 0.0 10.8 32.4#

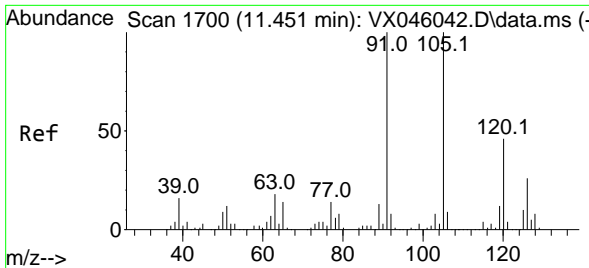


#79  
 2-Chlorotoluene  
 Concen: 0.022 ug/l  
 RT: 11.317 min Scan# 1678  
 Delta R.T. -0.043 min  
 Lab File: VX046380.D  
 Acq: 28 May 2025 13:06

Tgt Ion: 91 Resp: 68  
 Ion Ratio Lower Upper  
 91 100  
 126 0.0 15.6 46.7#



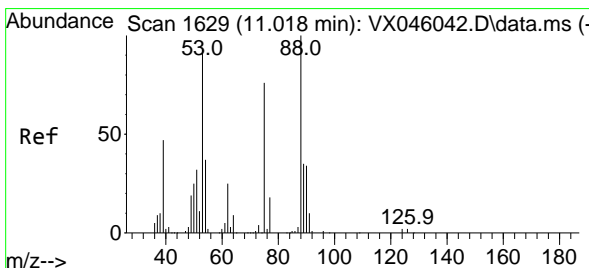
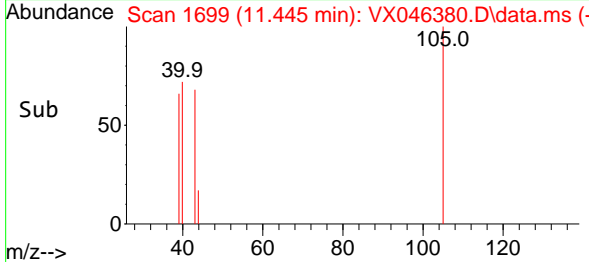
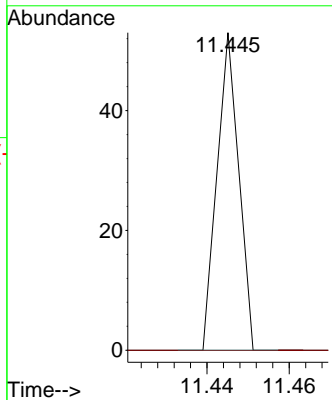
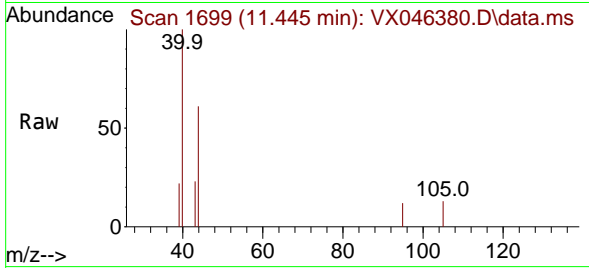




#80  
 1,3,5-Trimethylbenzene  
 Concen: 0.006 ug/l  
 RT: 11.445 min Scan# 1699  
 Delta R.T. -0.006 min  
 Lab File: VX046380.D  
 Acq: 28 May 2025 13:06

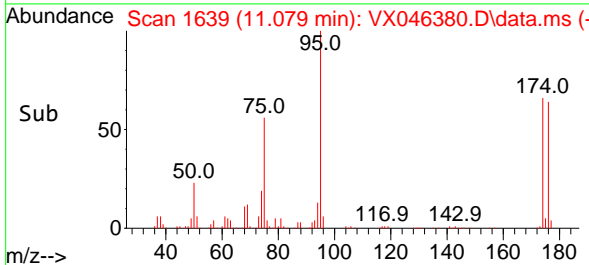
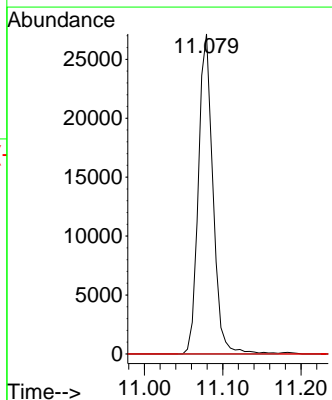
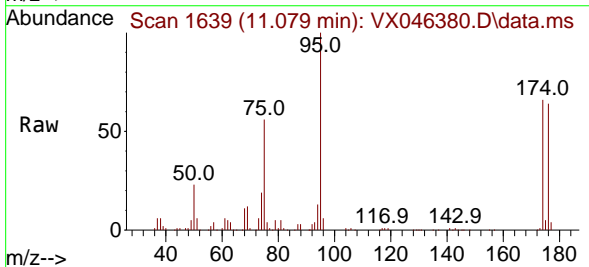
Instrument : MSVOA\_X  
 ClientSampleId : TP03-MHM

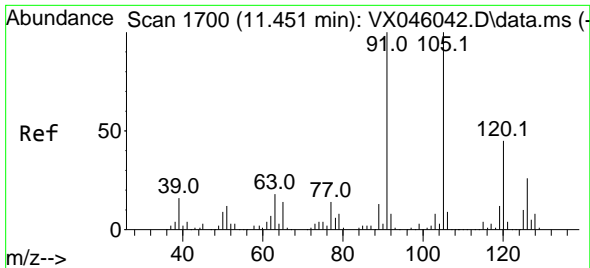
Tgt Ion:105 Resp: 19  
 Ion Ratio Lower Upper  
 105 100  
 120 0.0 23.1 69.2#



#81  
 trans-1,4-Dichloro-2-butene  
 Concen: 91.091 ug/l  
 RT: 11.079 min Scan# 1639  
 Delta R.T. 0.061 min  
 Lab File: VX046380.D  
 Acq: 28 May 2025 13:06

Tgt Ion: 75 Resp: 35081  
 Ion Ratio Lower Upper  
 75 100  
 53 0.0 100.5 150.7#  
 89 0.0 37.0 55.6#

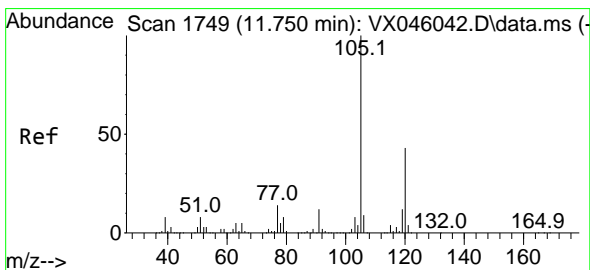
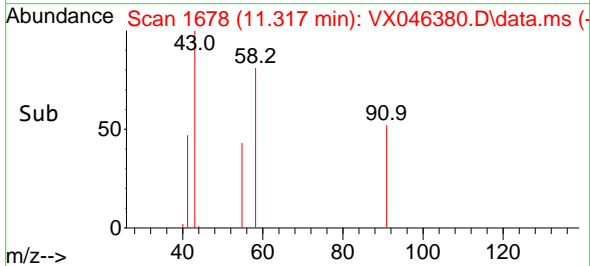
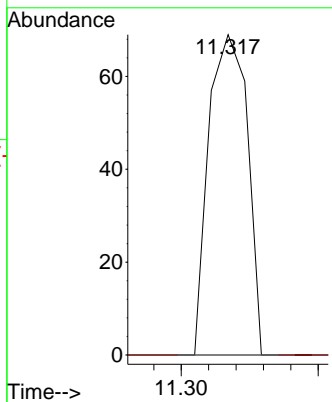
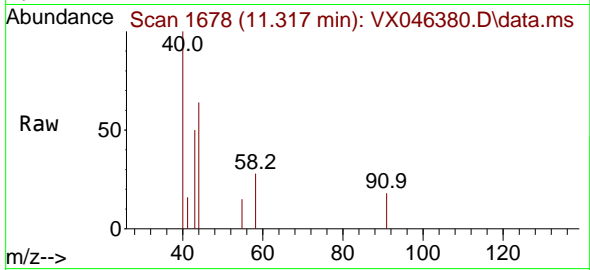




#82  
 4-Chlorotoluene  
 Concen: 0.020 ug/l  
 RT: 11.317 min Scan# 11  
 Delta R.T. -0.134 min  
 Lab File: VX046380.D  
 Acq: 28 May 2025 13:06

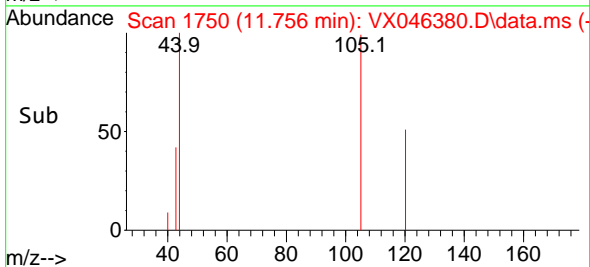
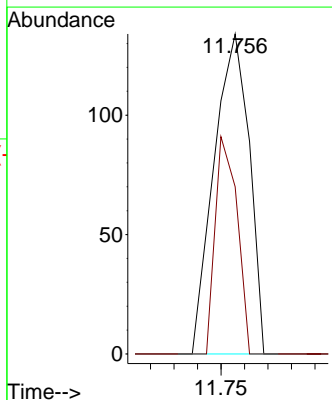
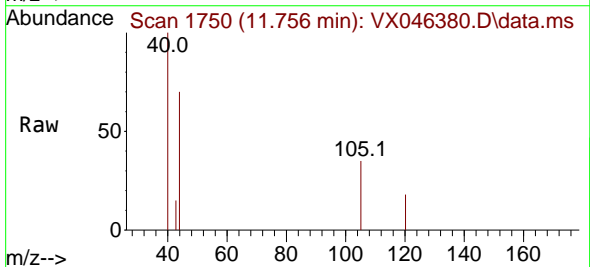
Instrument :  
 MSVOA\_X  
 ClientSampleId :  
 TP03-MHM

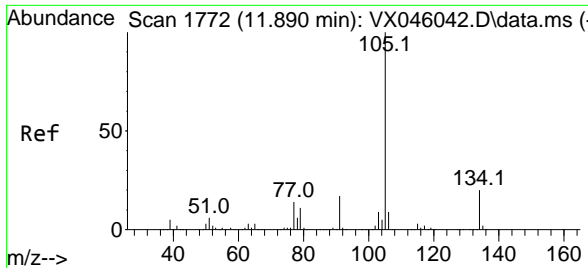
Tgt Ion: 91 Resp: 68  
 Ion Ratio Lower Upper  
 91 100  
 126 0.0 13.3 39.8#



#84  
 1,2,4-Trimethylbenzene  
 Concen: 0.041 ug/l  
 RT: 11.756 min Scan# 1750  
 Delta R.T. 0.006 min  
 Lab File: VX046380.D  
 Acq: 28 May 2025 13:06

Tgt Ion: 105 Resp: 139  
 Ion Ratio Lower Upper  
 105 100  
 120 42.4 21.2 63.6

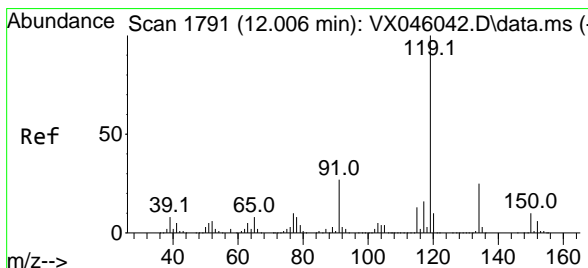
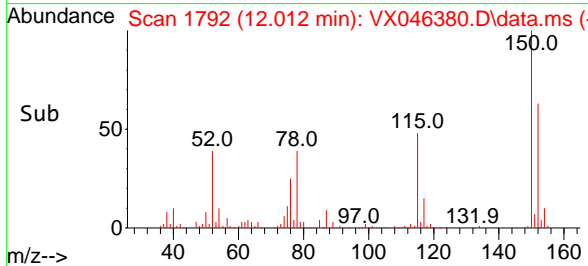
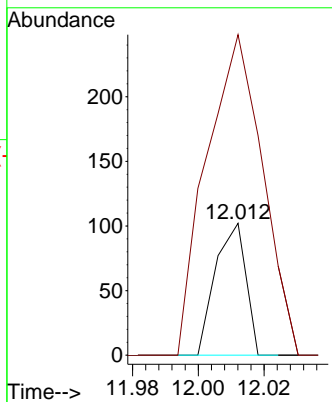
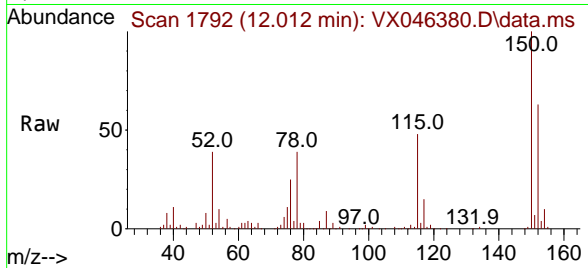




#85  
 sec-Butylbenzene  
 Concen: 0.016 ug/l  
 RT: 12.012 min Scan# 1792  
 Delta R.T. 0.122 min  
 Lab File: VX046380.D  
 Acq: 28 May 2025 13:06

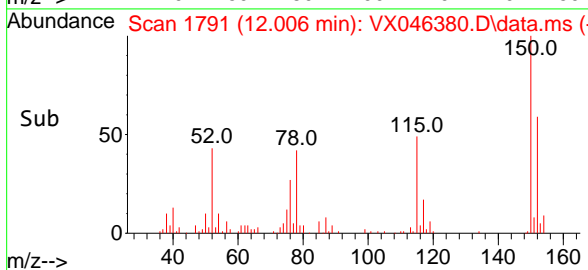
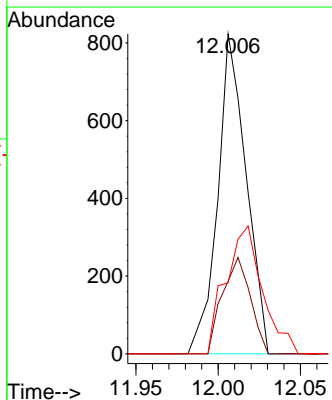
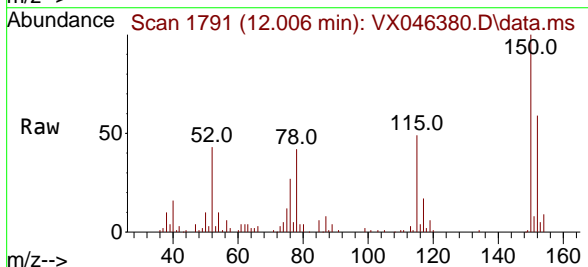
Instrument : MSVOA\_X  
 ClientSampleId : TP03-MHM

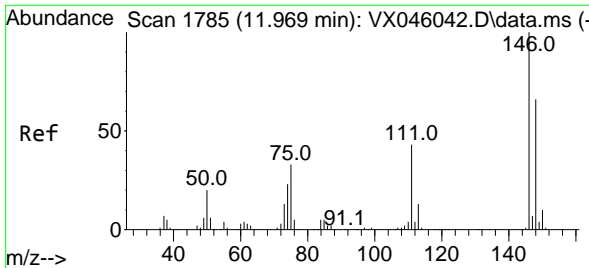
Tgt Ion:105 Resp: 65  
 Ion Ratio Lower Upper  
 105 100  
 134 452.3 9.7 29.1#



#86  
 p-Isopropyltoluene  
 Concen: 0.287 ug/l  
 RT: 12.006 min Scan# 1791  
 Delta R.T. 0.000 min  
 Lab File: VX046380.D  
 Acq: 28 May 2025 13:06

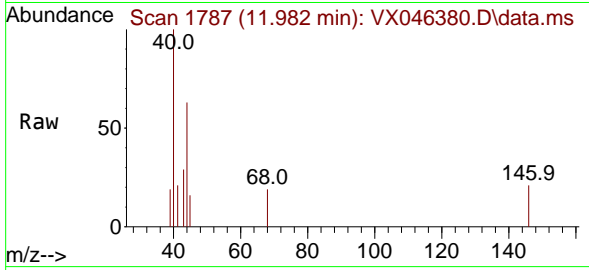
Tgt Ion:119 Resp: 991  
 Ion Ratio Lower Upper  
 119 100  
 134 29.7 12.5 37.5  
 91 51.8 13.8 41.4#



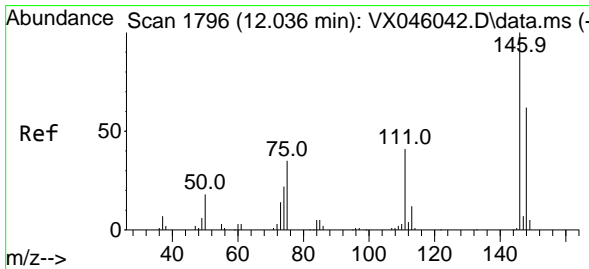
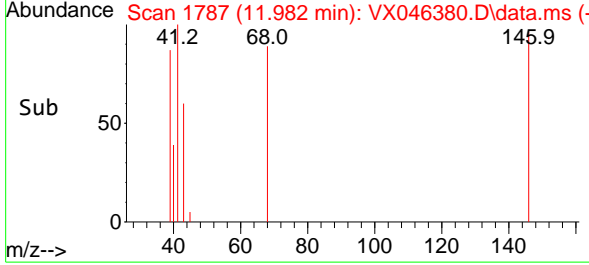
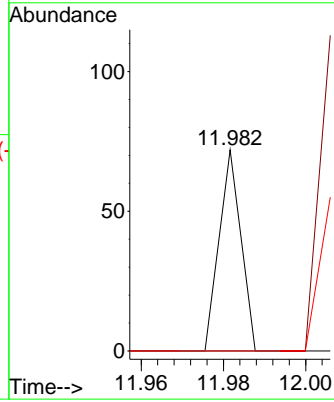


#87  
 1,3-Dichlorobenzene  
 Concen: 0.015 ug/l  
 RT: 11.982 min Scan# 1787  
 Delta R.T. 0.012 min  
 Lab File: VX046380.D  
 Acq: 28 May 2025 13:06

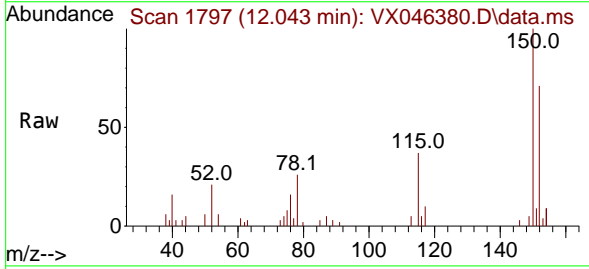
Instrument : MSVOA\_X  
 ClientSampleId : TP03-MHM



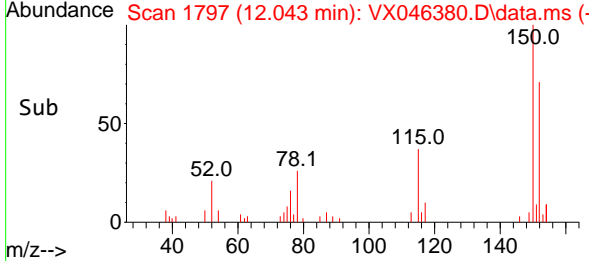
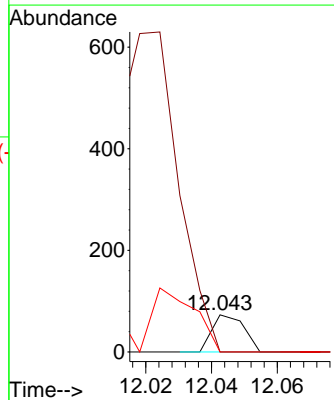
Tgt Ion:146 Resp: 26  
 Ion Ratio Lower Upper  
 146 100  
 111 0.0 22.1 66.3#  
 148 0.0 32.1 96.5#

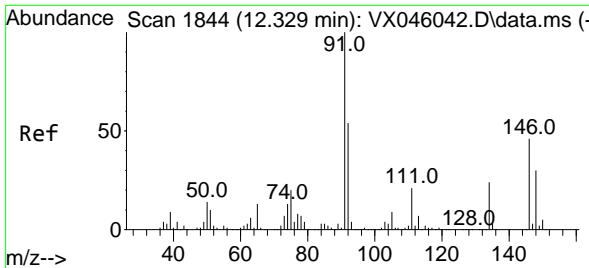


#88  
 1,4-Dichlorobenzene  
 Concen: 0.028 ug/l  
 RT: 12.043 min Scan# 1797  
 Delta R.T. 0.006 min  
 Lab File: VX046380.D  
 Acq: 28 May 2025 13:06



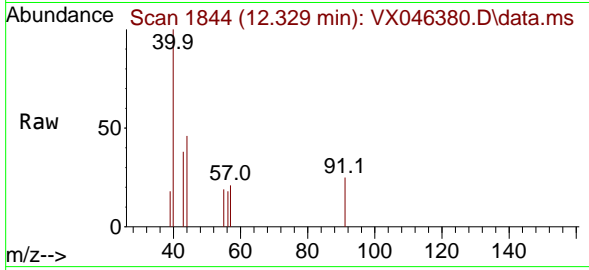
Tgt Ion:146 Resp: 49  
 Ion Ratio Lower Upper  
 146 100  
 111 1687.8 21.3 63.9#  
 148 322.4 31.9 95.5#





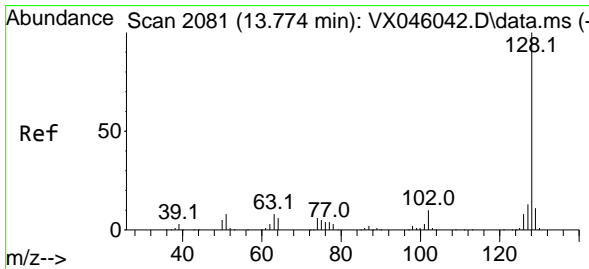
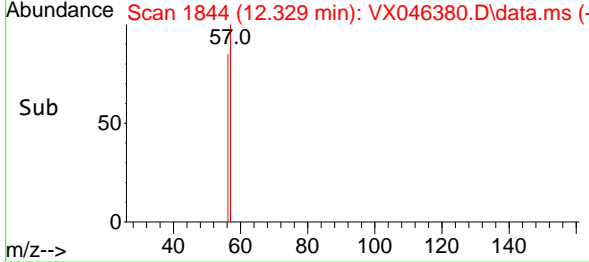
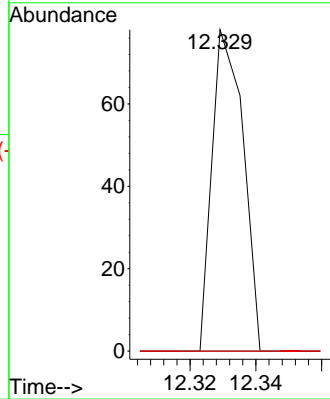
#89  
 n-Butylbenzene  
 Concen: 0.017 ug/l  
 RT: 12.329 min Scan# 1844  
 Delta R.T. 0.000 min  
 Lab File: VX046380.D  
 Acq: 28 May 2025 13:06

Instrument : MSVOA\_X  
 ClientSampleId : TP03-MHM

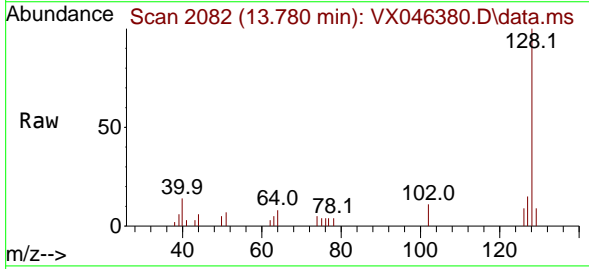


Tgt Ion: 91 Resp: 51

Ion	Ratio	Lower	Upper
91	100		
92	0.0	26.9	80.7#
134	0.0	11.8	35.3#



#95  
 Naphthalene  
 Concen: 1.210 ug/l  
 RT: 13.780 min Scan# 2082  
 Delta R.T. 0.006 min  
 Lab File: VX046380.D  
 Acq: 28 May 2025 13:06



Tgt Ion: 128 Resp: 4396

Ion	Ratio	Lower	Upper
128	100		
127	12.5	10.4	15.6
129	10.2	8.6	13.0

