

Data Path : W:\HPCHEM1\MSVOA X\DATA\VX052918\  
 Data File : VX002127.D  
 Acq On : 30 May 2018 07:19  
 Operator : JC/MD  
 Sample : PB109723ZHE#08  
 Misc : 5.0mL/MSVOA X/WATER  
 ALS Vial : 46 Sample Multiplier: 1

Instrument :  
 MSVOA\_X  
 ClientSampleId :  
 PB109723ZHE#08

Quant Time: May 30 11:36:32 2018  
 Quant Method : W:\HPCHEM1\MSVOA\_X\METHOD\82X052418W.M  
 Quant Title : SW846 8260  
 QLast Update : Thu May 24 13:09:03 2018  
 Response via : Initial Calibration

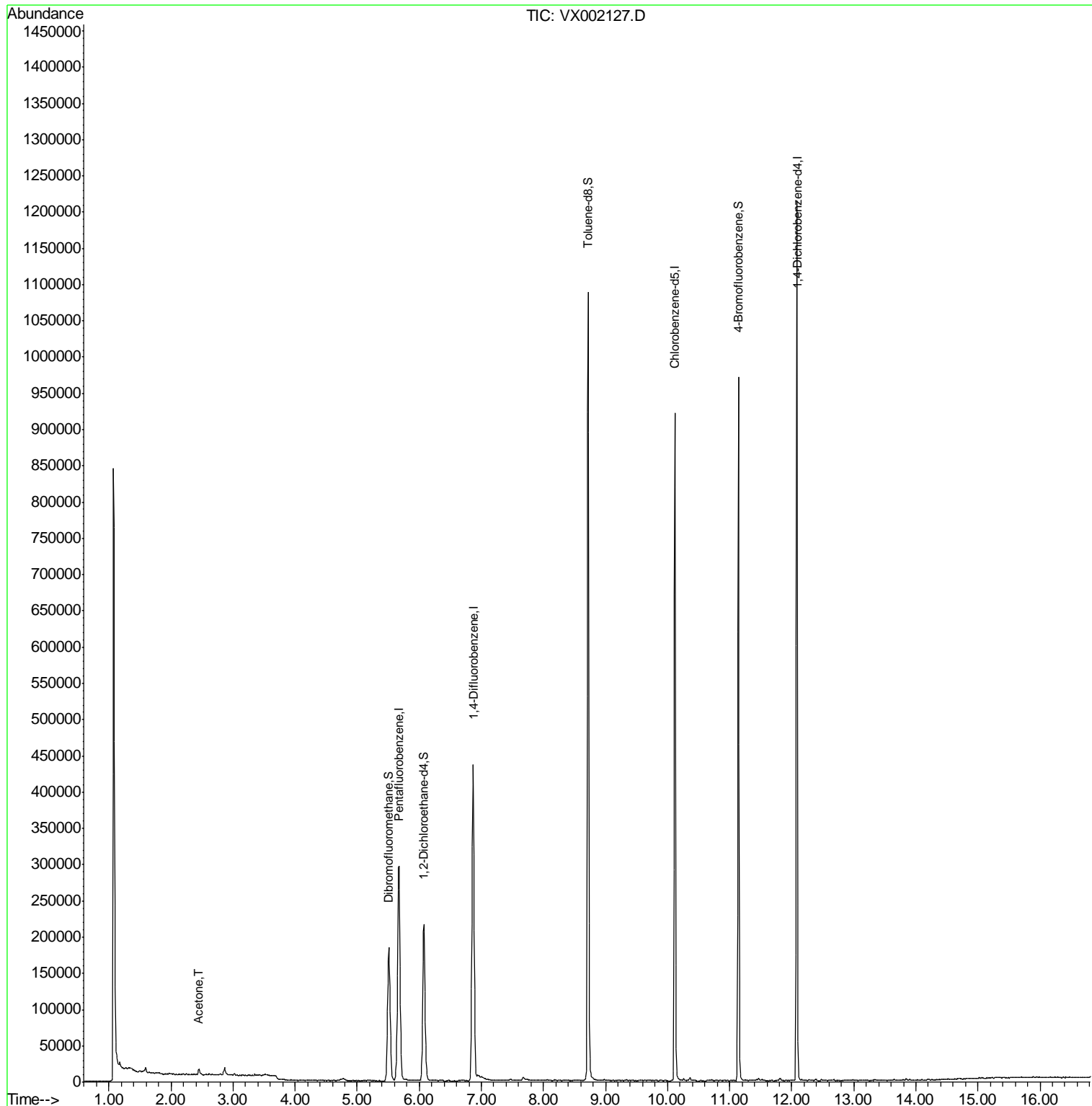
Internal Standards	R.T.	QIon	Response	Conc	Units	Dev(Min)
1) Pentafluorobenzene	5.67	168	295338	50.00	ug/l	0.00
34) 1,4-Difluorobenzene	6.87	114	428272	50.00	ug/l	0.00
63) Chlorobenzene-d5	10.12	117	409820	50.00	ug/l	0.00
72) 1,4-Dichlorobenzene-d4	12.09	152	249748	50.00	ug/l	0.00
System Monitoring Compounds						
33) 1,2-Dichloroethane-d4	6.07	65	205747	38.97	ug/l	0.00
Spiked Amount	50.000		Recovery	=	77.94%	
35) Dibromofluoromethane	5.51	113	150852	35.22	ug/l	0.00
Spiked Amount	50.000		Recovery	=	70.44%	
50) Toluene-d8	8.72	98	624049	40.25	ug/l	0.00
Spiked Amount	50.000		Recovery	=	80.50%	
62) 4-Bromofluorobenzene	11.14	95	237738	39.19	ug/l	0.00
Spiked Amount	50.000		Recovery	=	78.38%	
Target Compounds						
16) Acetone	2.45	43	8198	4.02	ug/l	98

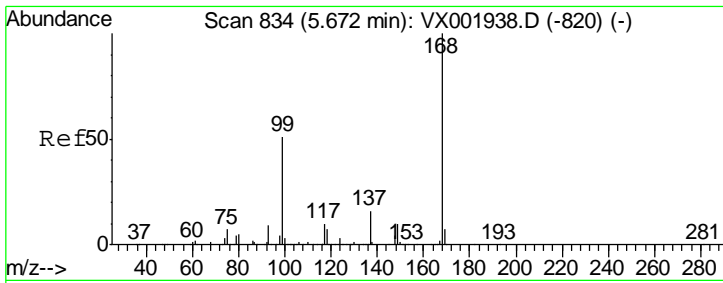
(#) = qualifier out of range (m) = manual integration (+) = signals summed

Data Path : W:\HPCHEM1\MSVOA X\DATA\VX052918\  
 Data File : VX002127.D  
 Acq On : 30 May 2018 07:19  
 Operator : JC/MD  
 Sample : PB109723ZHE#08  
 Misc : 5.0mL/MSVOA X/WATER  
 ALS Vial : 46 Sample Multiplier: 1

Instrument :  
 MSVOA\_X  
 ClientSampleId :  
 PB109723ZHE#08

Quant Time: May 30 11:36:32 2018  
 Quant Method : W:\HPCHEM1\MSVOA\_X\METHOD\82X052418W.M  
 Quant Title : SW846 8260  
 QLast Update : Thu May 24 13:09:03 2018  
 Response via : Initial Calibration

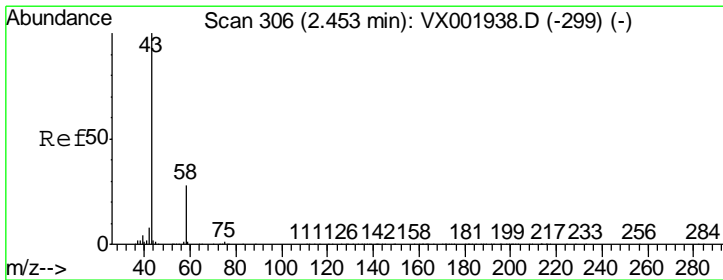
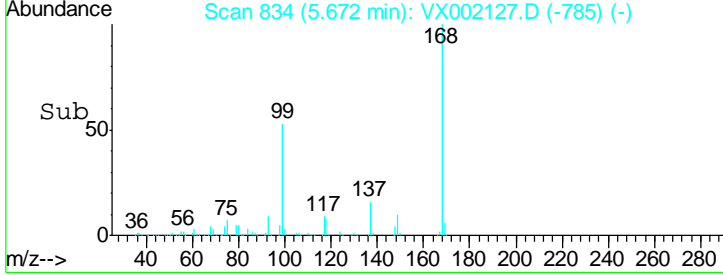
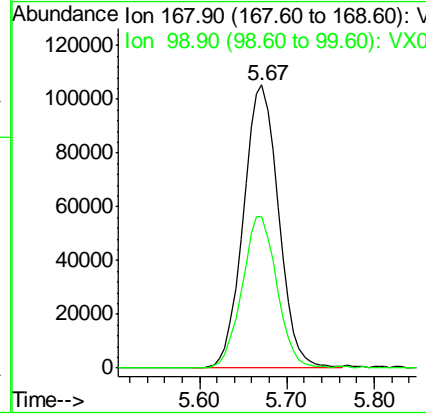
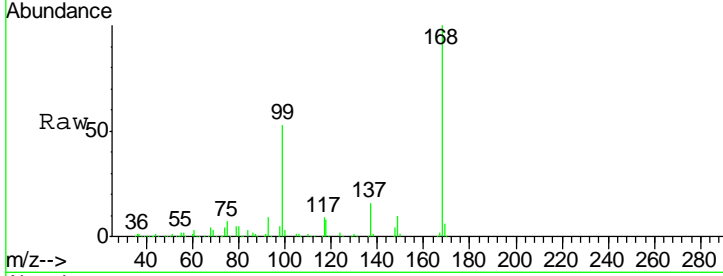




#1  
 Pentafluorobenzene  
 Concen: 50.00 ug/l  
 RT: 5.67 min Scan# 834  
 Delta R.T. -0.00 min  
 Lab File: VX002127.D  
 Acq: 30 May 2018 07:19

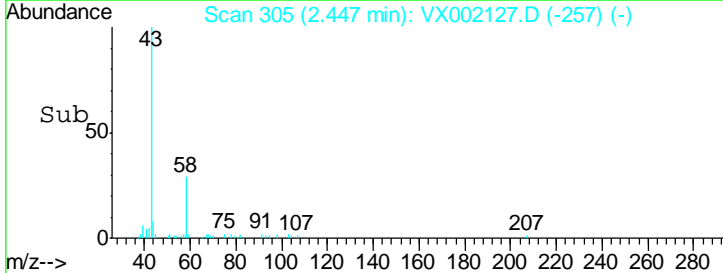
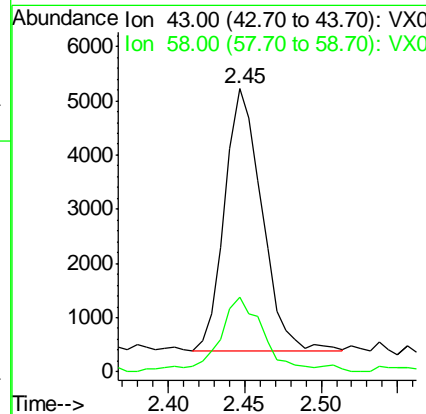
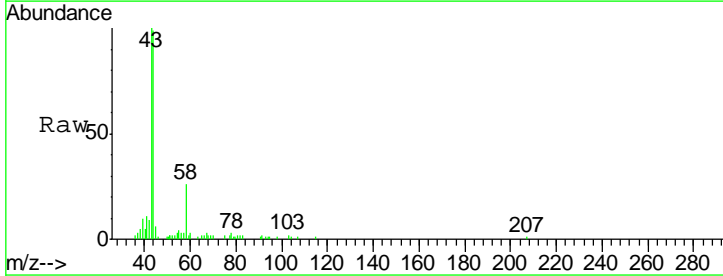
Instrument : MSVOA\_X  
 ClientSampleId : PB109723ZHE#08

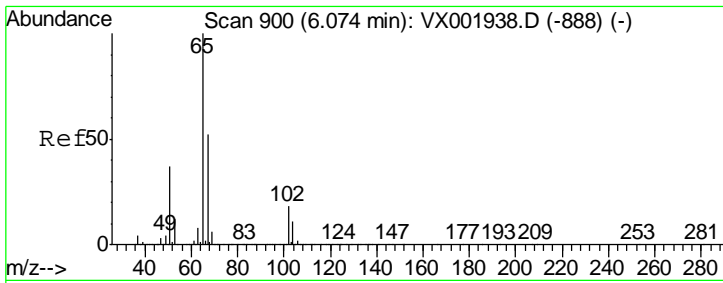
Tgt Ion	Resp	Lower	Upper
168	100		
99	53.4	41.0	61.4



#16  
 Acetone  
 Concen: 4.02 ug/l  
 RT: 2.45 min Scan# 305  
 Delta R.T. -0.01 min  
 Lab File: VX002127.D  
 Acq: 30 May 2018 07:19

Tgt Ion	Resp	Lower	Upper
43	100		
58	27.0	22.3	33.5

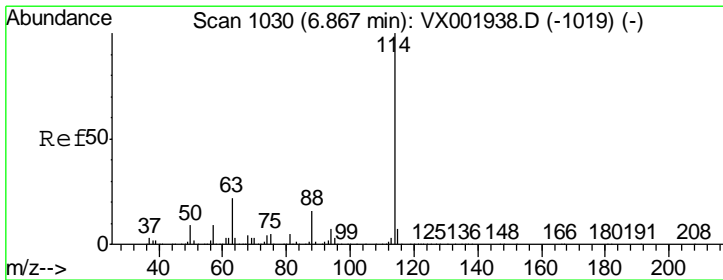
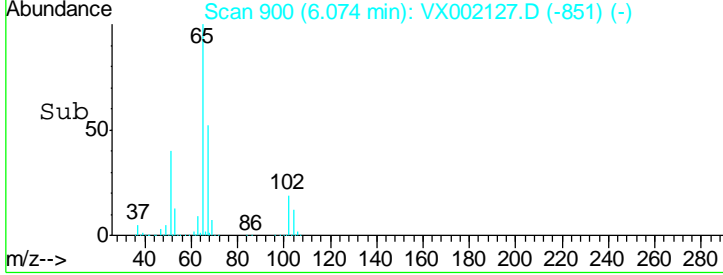
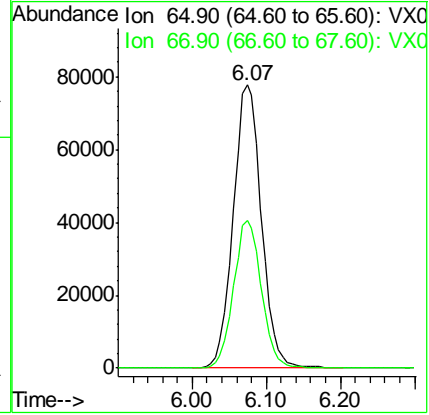
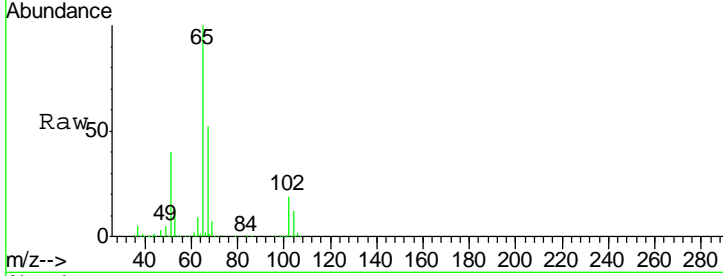




#33  
 1,2-Dichloroethane-d4  
 Concen: 38.97 ug/l  
 RT: 6.07 min Scan# 900  
 Delta R.T. -0.00 min  
 Lab File: VX002127.D  
 Acq: 30 May 2018 07:19

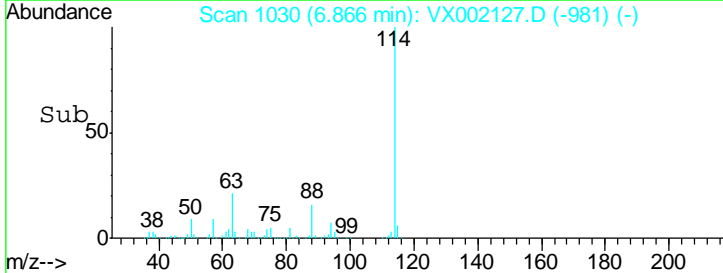
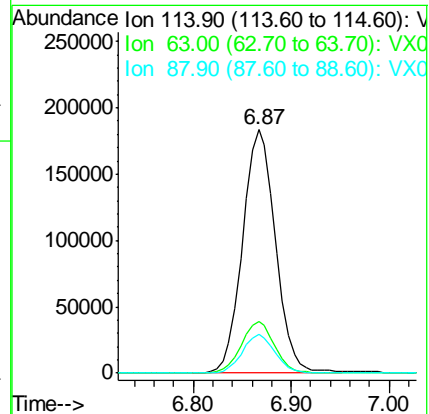
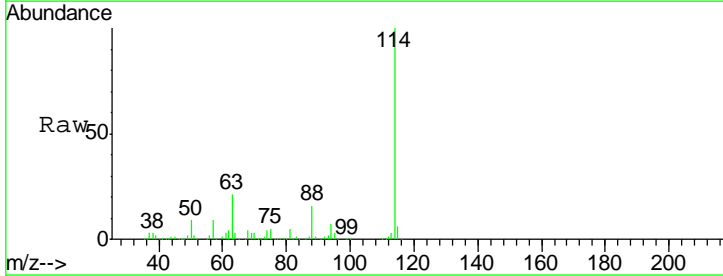
Instrument : MSVOA\_X  
 ClientSampleId : PB109723ZHE#08

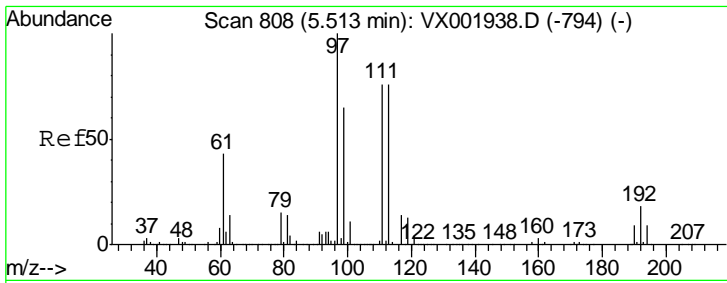
Tgt Ion	Resp	Lower	Upper
65	100		
67	51.8	0.0	104.0



#34  
 1,4-Difluorobenzene  
 Concen: 50.00 ug/l  
 RT: 6.87 min Scan# 1030  
 Delta R.T. -0.00 min  
 Lab File: VX002127.D  
 Acq: 30 May 2018 07:19

Tgt Ion	Resp	Lower	Upper
114	100		
63	21.0	0.0	43.2
88	15.8	0.0	31.6

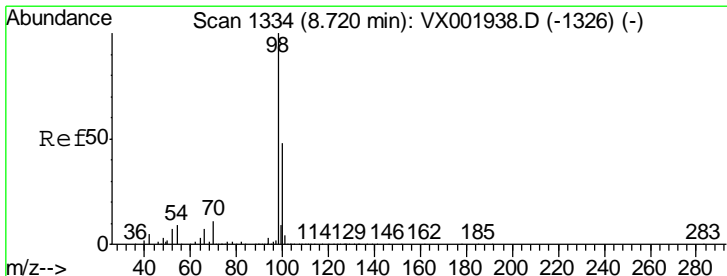
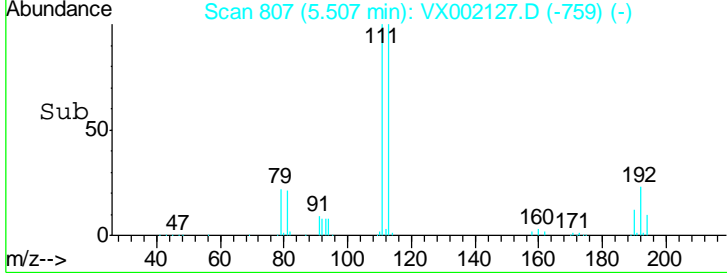
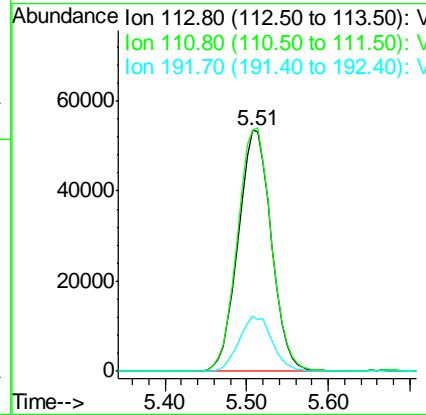
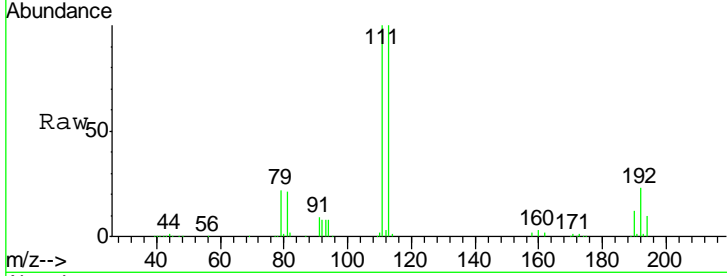




#35  
 Dibromofluoromethane  
 Concen: 35.22 ug/l  
 RT: 5.51 min Scan# 807  
 Delta R.T. -0.01 min  
 Lab File: VX002127.D  
 Acq: 30 May 2018 07:19

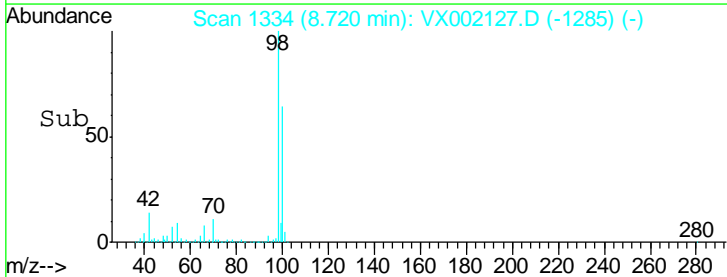
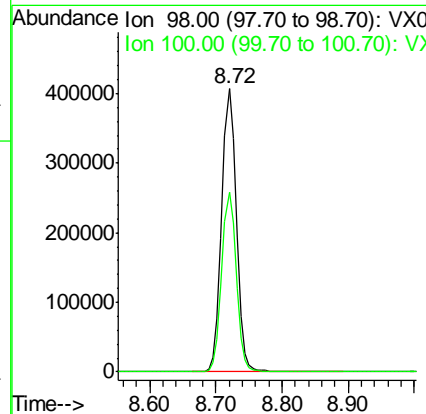
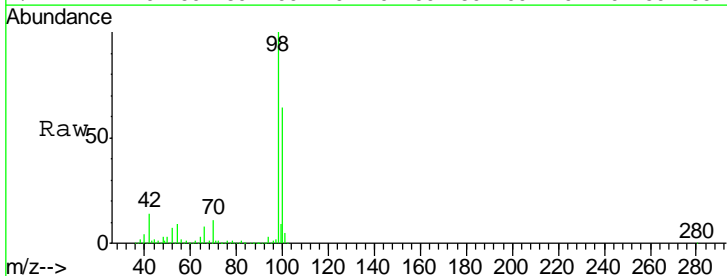
Instrument :  
 MSVOA\_X  
 ClientSampleId :  
 PB109723ZHE#08

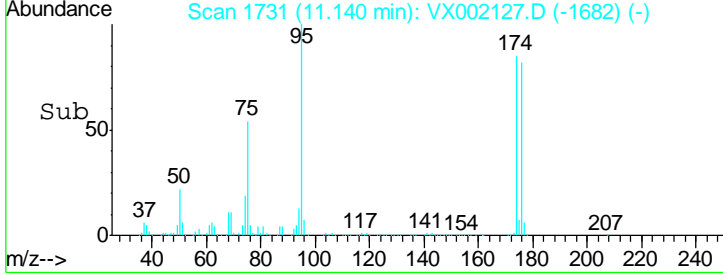
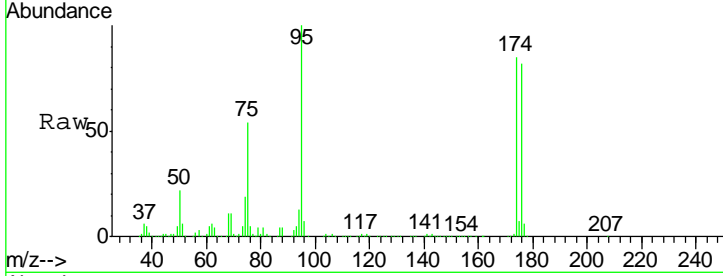
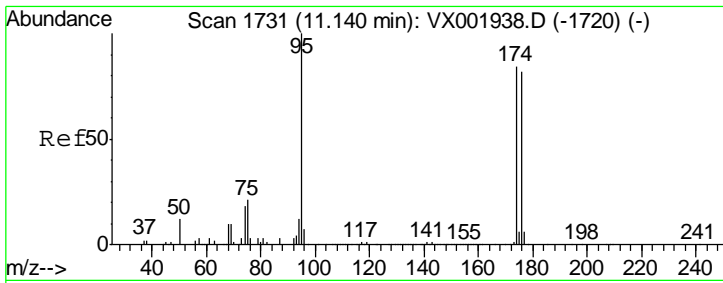
Tgt Ion	Resp	Lower	Upper
113	100		
111	102.8	82.0	123.0
192	22.9	18.9	28.3



#50  
 Toluene-d8  
 Concen: 40.25 ug/l  
 RT: 8.72 min Scan# 1334  
 Delta R.T. 0.00 min  
 Lab File: VX002127.D  
 Acq: 30 May 2018 07:19

Tgt Ion	Resp	Lower	Upper
98	100		
100	63.4	51.5	77.3

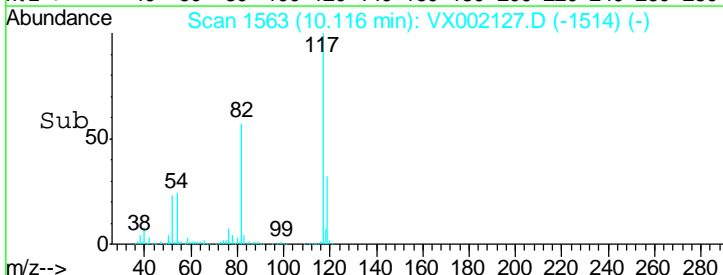
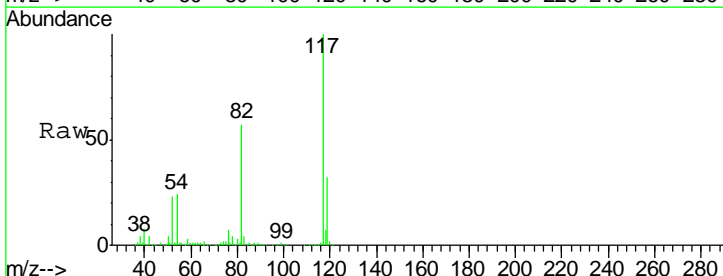
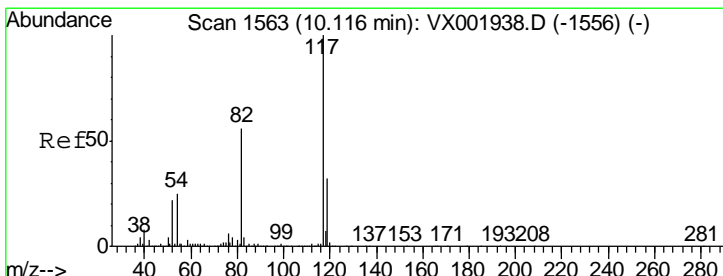
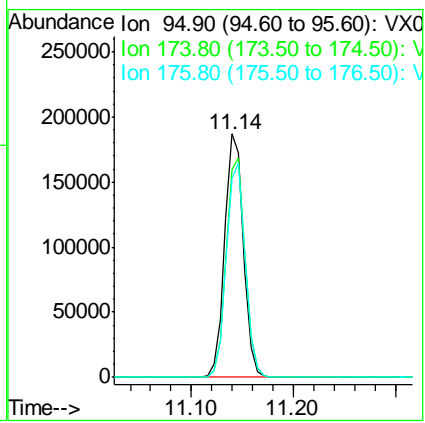




#62  
 4-Bromofluorobenzene  
 Concen: 39.19 ug/l  
 RT: 11.14 min Scan# 1731  
 Delta R.T. 0.00 min  
 Lab File: VX002127.D  
 Acq: 30 May 2018 07:19

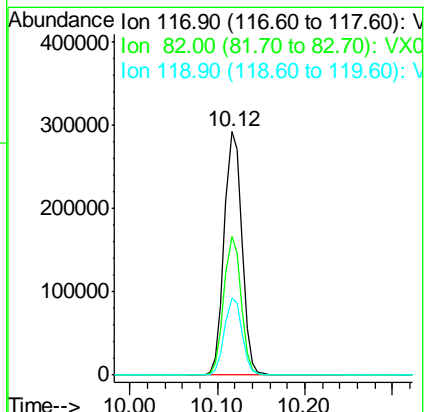
Instrument : MSVOA\_X  
 ClientSampled : PB109723ZHE#08

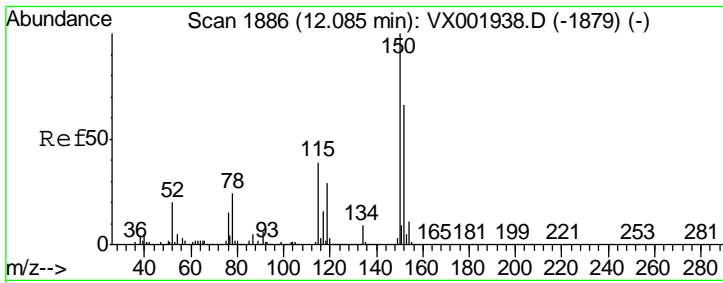
Tgt Ion	Resp	Lower	Upper
95	100		
174	90.9	0.0	178.8
176	88.4	0.0	175.6



#63  
 Chlorobenzene-d5  
 Concen: 50.00 ug/l  
 RT: 10.12 min Scan# 1563  
 Delta R.T. -0.00 min  
 Lab File: VX002127.D  
 Acq: 30 May 2018 07:19

Tgt Ion	Resp	Lower	Upper
117	100		
82	57.0	44.8	67.2
119	31.9	25.5	38.3





#72  
 1,4-Dichlorobenzene-d4  
 Concen: 50.00 ug/l  
 RT: 12.09 min Scan# 1886  
 Delta R.T. -0.00 min  
 Lab File: VX002127.D  
 Acq: 30 May 2018 07:19

Instrument : MSVOA\_X  
 ClientSampleId : PB109723ZHE#08

Tot Ion	Resp	Lower	Upper
152	100		
115	55.6	42.3	126.8
150	156.0	0.0	351.0

