

Data Path : W:\HPCHEM1\MSVOA_X\DATA\VX053018\
 Data File : VX002145.D
 Acq On : 30 May 2018 19:05
 Operator : JC/MD
 Sample : J3165-06
 Misc : 5.0mL/MSVOA_X/WATER
 ALS Vial : 13 Sample Multiplier: 1

Instrument :
 MSVOA_X
 ClientSampled :
 MW-22

Quant Time: May 31 02:17:03 2018
 Quant Method : W:\HPCHEM1\MSVOA_X\METHOD\82X052418W.M
 Quant Title : SW846 8260
 QLast Update : Thu May 24 13:09:03 2018
 Response via : Initial Calibration

Internal Standards	R.T.	QIon	Response	Conc	Units	Dev(Min)
1) Pentafluorobenzene	5.67	168	283043	50.00	ug/l	0.00
34) 1,4-Difluorobenzene	6.87	114	415045	50.00	ug/l	0.00
63) Chlorobenzene-d5	10.12	117	384339	50.00	ug/l	0.00
72) 1,4-Dichlorobenzene-d4	12.08	152	226606	50.00	ug/l	0.00

System Monitoring Compounds

33) 1,2-Dichloroethane-d4	6.07	65	186487	36.86	ug/l	0.00
Spiked Amount	50.000		Recovery	=	73.72%	
35) Dibromofluoromethane	5.51	113	141349	34.06	ug/l	0.00
Spiked Amount	50.000		Recovery	=	68.12%	
50) Toluene-d8	8.72	98	573952	38.20	ug/l	0.00
Spiked Amount	50.000		Recovery	=	76.40%	
62) 4-Bromofluorobenzene	11.14	95	213919	36.39	ug/l	0.00
Spiked Amount	50.000		Recovery	=	72.78%	

Target Compounds

						Qvalue
2) Dichlorodifluoromethane	1.20	85	46	Below Cal	#	41
3) Chloromethane	1.36	50	4859	1.12	ug/l #	55
5) Bromomethane	1.65	94	1356	Below Cal	#	76
10) Methyl Iodide	2.52	142	1311	0.27	ug/l	97
11) Tert butyl alcohol	3.07	59	1163	1.17	ug/l #	71
13) Acrolein	2.26	56	219	0.51	ug/l #	41
16) Acetone	2.45	43	1198	0.61	ug/l #	56
17) Carbon Disulfide	2.57	76	4551	0.48	ug/l #	92
18) Methyl Acetate	2.78	43	376	Below Cal	#	55
19) Methyl tert-butyl Ether	3.20	73	4157	0.34	ug/l #	83
20) Methylene Chloride	2.85	84	757	Below Cal	#	78
21) trans-1,2-Dichloroethene	3.16	96	218	Below Cal	#	28
28) Bromochloromethane	5.00	49	66	Below Cal	#	14
31) Cyclohexane	5.58	56	3587	0.51	ug/l #	90
36) 1,1-Dichloropropene	5.66	75	20121	3.49	ug/l #	52
38) Carbon Tetrachloride	5.67	117	26600	3.95	ug/l #	14
39) Methylcyclohexane	7.46	83	7547	1.06	ug/l	89
41) Methacrylonitrile	5.05	41	110	Below Cal	#	38
44) Trichloroethene	7.21	130	1937	0.39	ug/l	96
55) 1,1,2-Trichloroethane	9.17	97	6284	1.40	ug/l #	20
56) Ethyl methacrylate	9.16	69	1750	0.23	ug/l #	1
59) 2-Hexanone	9.56	43	3881	0.67	ug/l #	42
69) o-Xylene	10.70	106	1652	0.20	ug/l	91
73) Isopropylbenzene	11.02	105	58152	3.03	ug/l	100
74) N-amyl acetate	6.45	43	64	Below Cal	#	46
76) 1,2,3-Trichloropropane	11.14	75	114471	21.03	ug/l #	32
78) n-propylbenzene	11.37	91	33249	1.55	ug/l	97
79) 2-Chlorotoluene	11.37	91	33249	0.54	ug/l #	42
81) trans-1,4-Dichloro-2-buten	11.14	75	114471	50.55	ug/l #	11
83) tert-Butylbenzene	11.77	119	10694	0.66	ug/l	88
85) sec-Butylbenzene	11.95	105	78281	4.05	ug/l	82
86) p-Isopropyltoluene	12.24	119	36294	2.10	ug/l	95
89) n-Butylbenzene	12.39	91	20882	1.42	ug/l #	46
90) Hexachloroethane	12.67	117	4794	1.40	ug/l #	2

Data Path : W:\HPCHEM1\MSVOA_X\DATA\VX053018\
Data File : VX002145.D
Acq On : 30 May 2018 19:05
Operator : JC/MD
Sample : J3165-06
Misc : 5.0mL/MSVOA_X/WATER
ALS Vial : 13 Sample Multiplier: 1

Instrument :
MSVOA_X
ClientSampleId :
MW-22

Quant Time: May 31 02:17:03 2018
Quant Method : W:\HPCHEM1\MSVOA_X\METHOD\82X052418W.M
Quant Title : SW846 8260
QLast Update : Thu May 24 13:09:03 2018
Response via : Initial Calibration

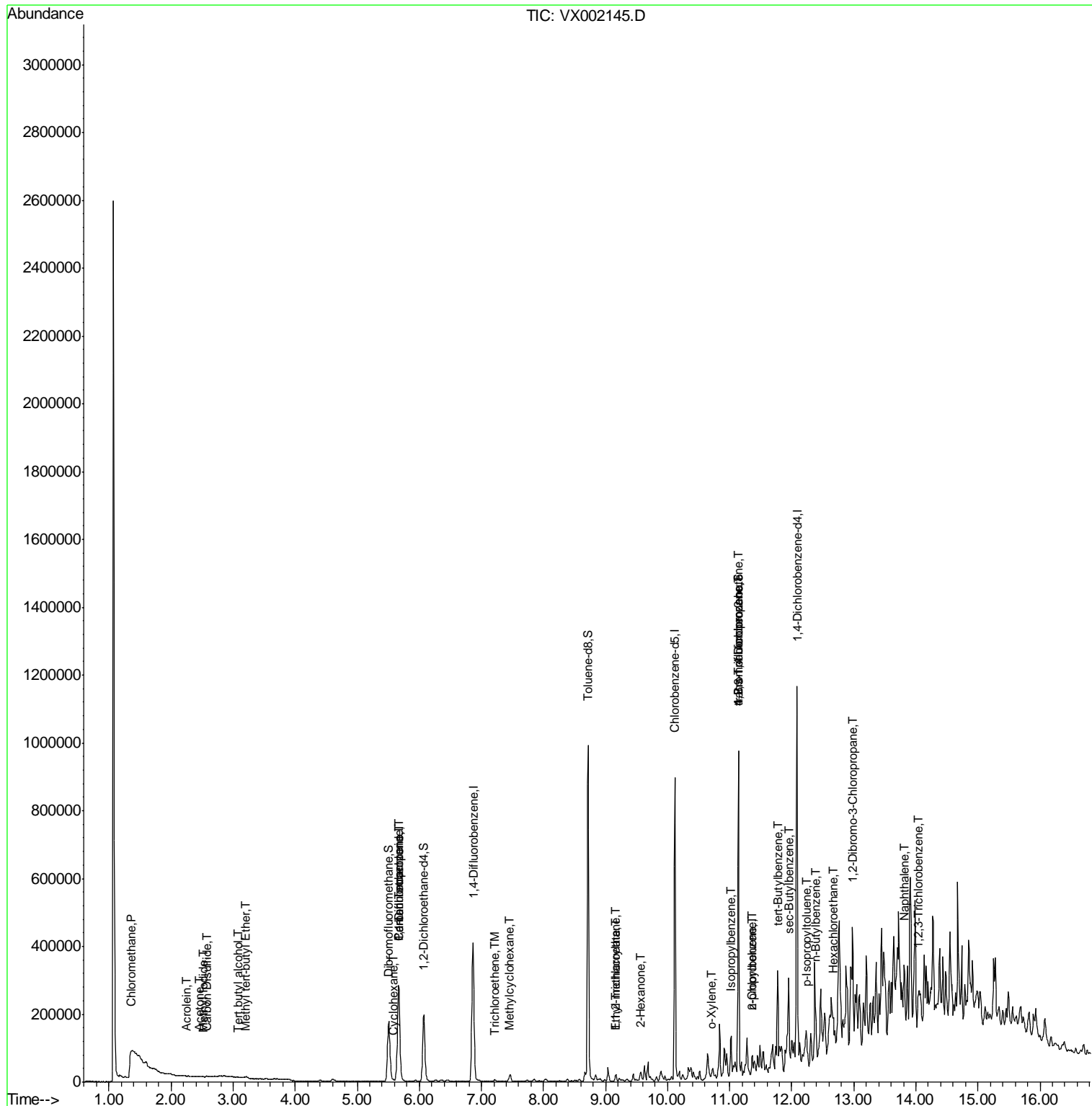
Internal Standards	R.T.	QIon	Response	Conc	Units	Dev(Min)
92) 1,2-Dibromo-3-Chloropropan	12.98	75	1800	1.06	ug/l #	1
95) Naphthalene	13.82	128	9917	0.48	ug/l #	8
96) 1,2,3-Trichlorobenzene	14.04	180	1505	0.22	ug/l #	1

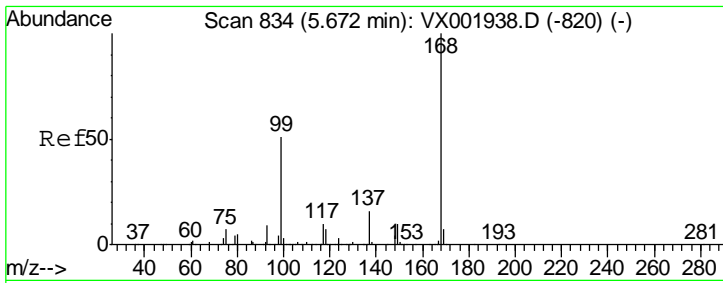
(#) = qualifier out of range (m) = manual integration (+) = signals summed

Data Path : W:\HPCHEM1\MSVOA_X\DATA\VX053018\
 Data File : VX002145.D
 Acq On : 30 May 2018 19:05
 Operator : JC/MD
 Sample : J3165-06
 Misc : 5.0mL/MSVOA_X/WATER
 ALS Vial : 13 Sample Multiplier: 1

Instrument :
 MSVOA_X
 Client Sampled :
 MW-22

Quant Time: May 31 02:17:03 2018
 Quant Method : W:\HPCHEM1\MSVOA_X\METHOD\82X052418W.M
 Quant Title : SW846 8260
 QLast Update : Thu May 24 13:09:03 2018
 Response via : Initial Calibration

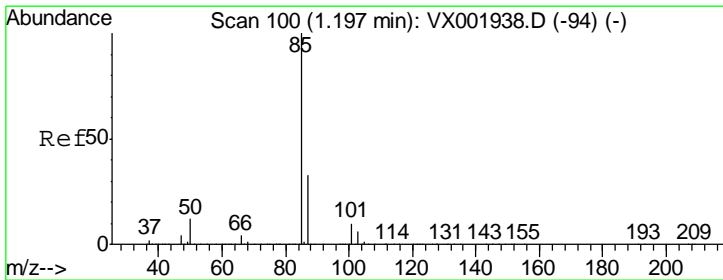
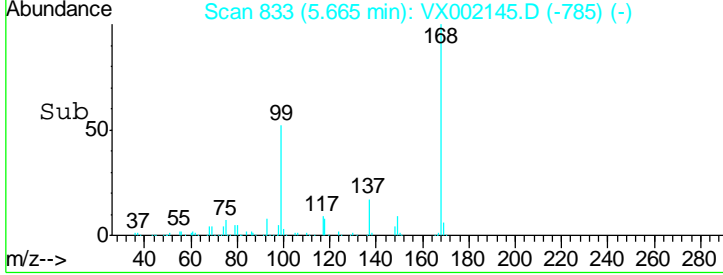
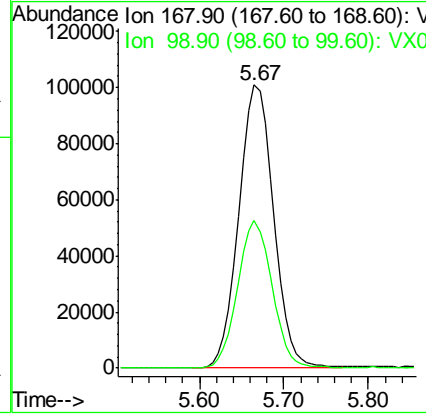
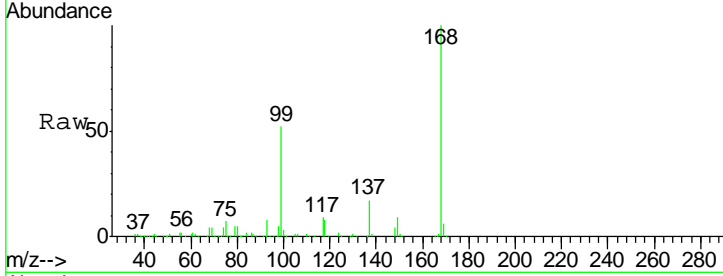




#1
 Pentafluorobenzene
 Concen: 50.00 ug/l
 RT: 5.67 min Scan# 833
 Delta R.T. -0.01 min
 Lab File: VX002145.D
 Acq: 30 May 2018 19:05

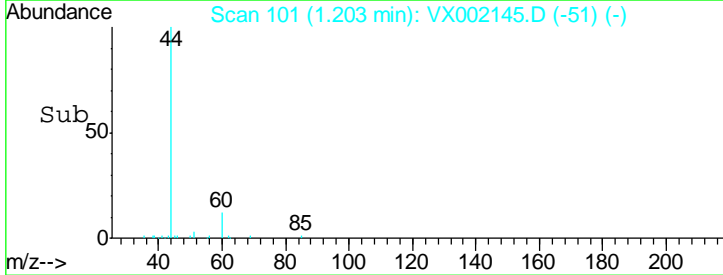
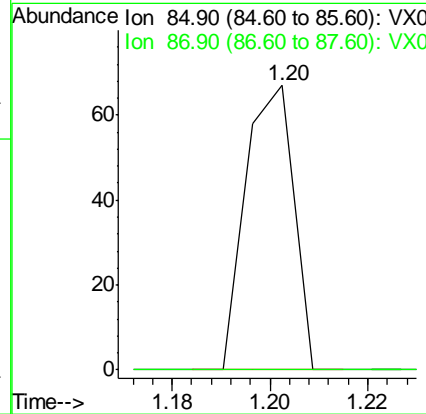
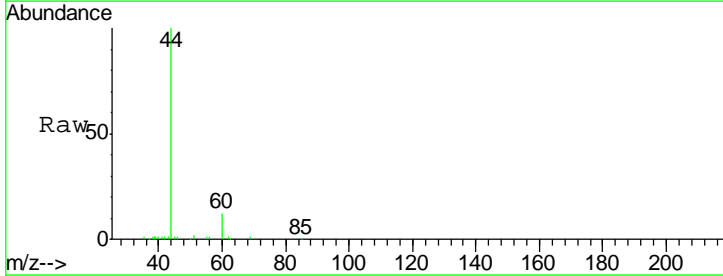
Instrument :
 MSVOA_X
 ClientSampled :
 MW-22

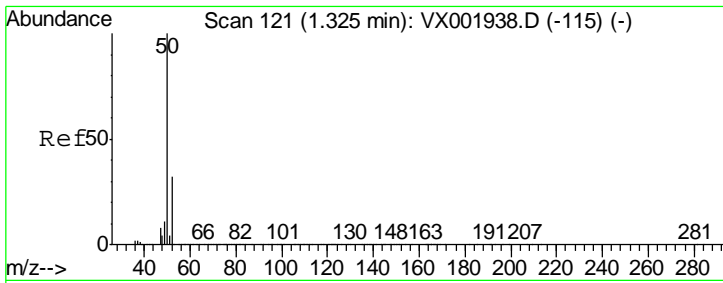
Tgt Ion	Resp	Lower	Upper
168	100		
99	51.9	41.0	61.4



#2
 Dichlorodifluoromethane
 Concen: Below Cal
 RT: 1.20 min Scan# 101
 Delta R.T. 0.01 min
 Lab File: VX002145.D
 Acq: 30 May 2018 19:05

Tgt Ion	Resp	Lower	Upper
85	100		
87	0.0	16.7	50.0#

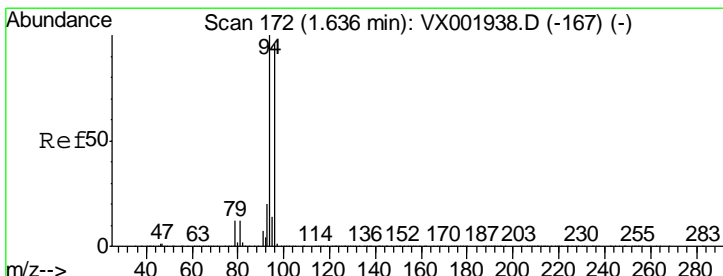
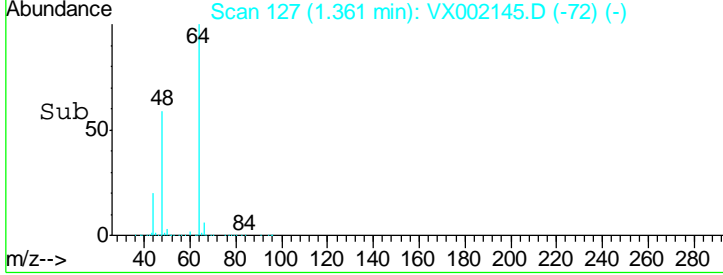
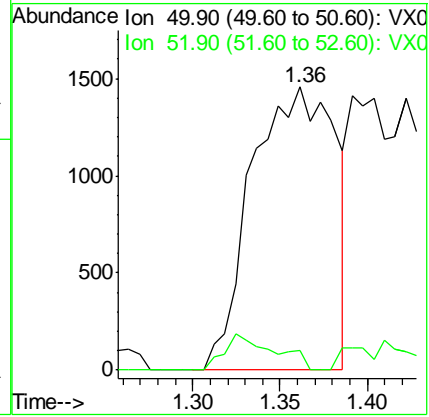
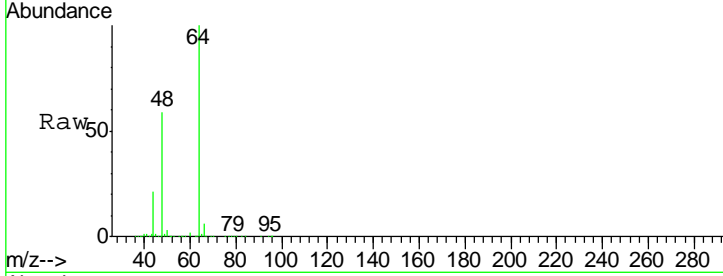




#3
 Chloromethane
 Concen: 1.12 ug/l
 RT: 1.36 min Scan# 127
 Delta R.T. 0.04 min
 Lab File: VX002145.D
 Acq: 30 May 2018 19:05

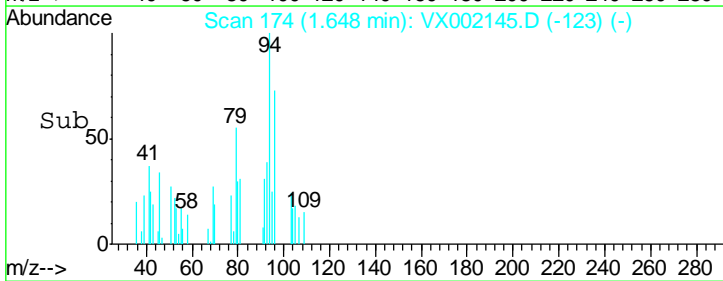
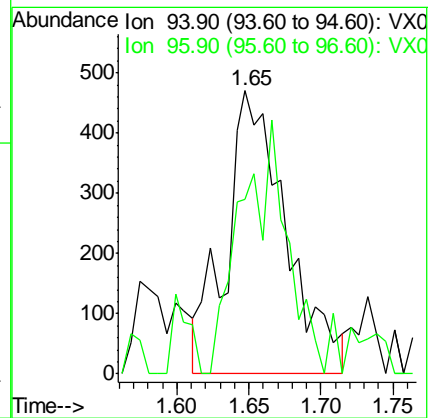
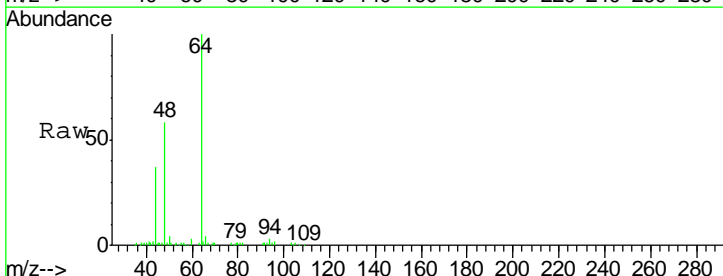
Instrument :
 MSVOA_X
ClientSampled :
 MW-22

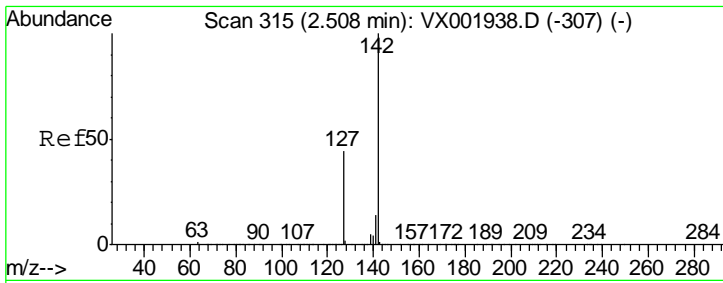
Tgt Ion: 50 Resp: 4859
 Ion Ratio Lower Upper
 50 100
 52 7.1 26.0 39.0#



#5
 Bromomethane
 Concen: Below Cal
 RT: 1.65 min Scan# 174
 Delta R.T. 0.01 min
 Lab File: VX002145.D
 Acq: 30 May 2018 19:05

Tgt Ion: 94 Resp: 1356
 Ion Ratio Lower Upper
 94 100
 96 72.0 75.9 113.9#

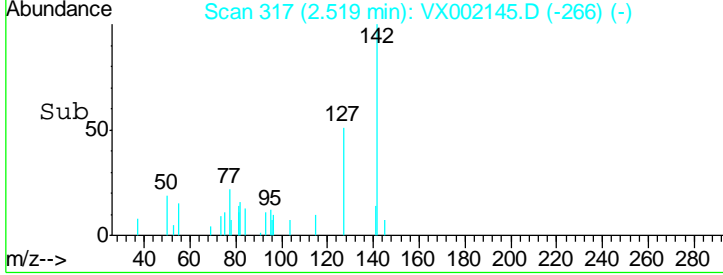
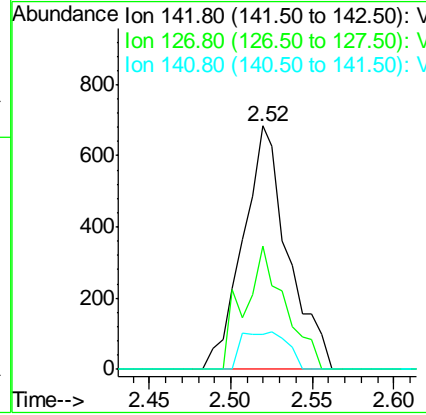
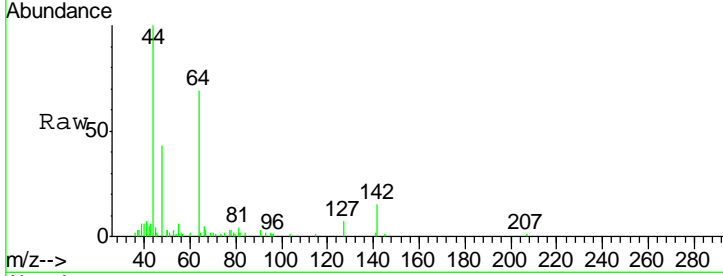




#10
 Methyl Iodide
 Concen: 0.27 ug/l
 RT: 2.52 min Scan# 317
 Delta R.T. 0.01 min
 Lab File: VX002145.D
 Acq: 30 May 2018 19:05

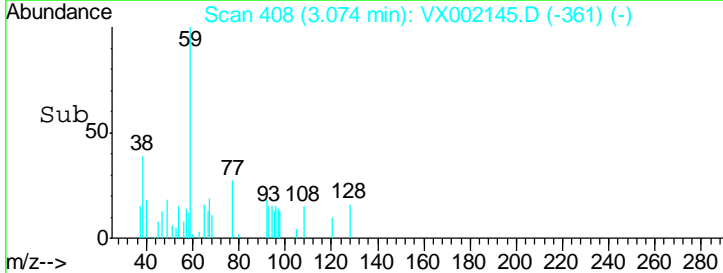
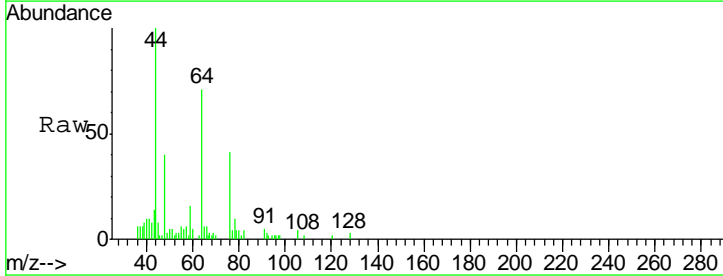
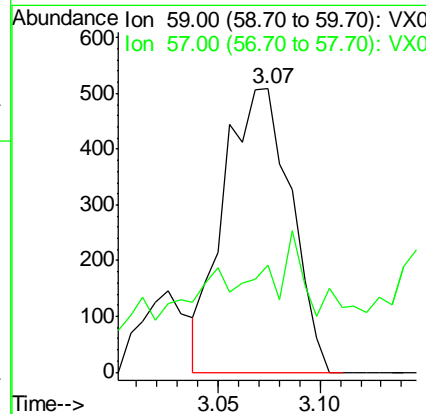
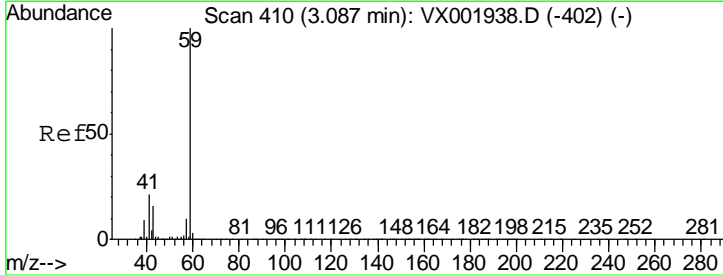
Instrument :
 MSVOA_X
 ClientSampled :
 MW-22

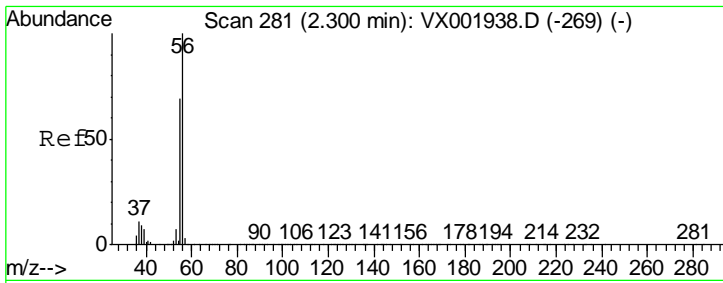
Tgt Ion	Resp	Lower	Upper
142	1311		
127	46.7	35.5	53.3
141	15.3	11.3	16.9



#11
 Tert butyl alcohol
 Concen: 1.17 ug/l
 RT: 3.07 min Scan# 408
 Delta R.T. -0.01 min
 Lab File: VX002145.D
 Acq: 30 May 2018 19:05

Tgt Ion	Resp	Lower	Upper
59	1163		
57	0.0	8.9	13.3#

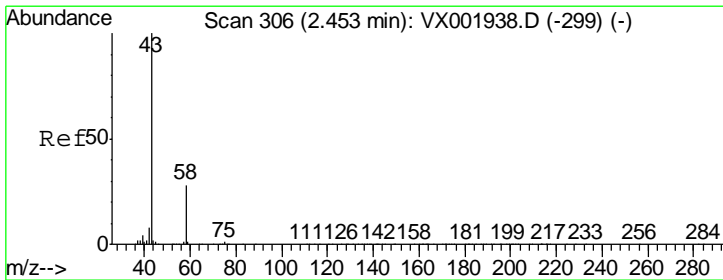
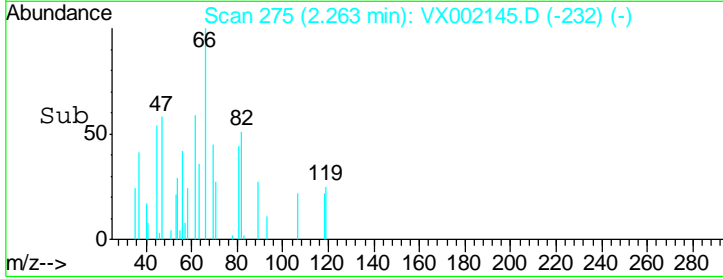
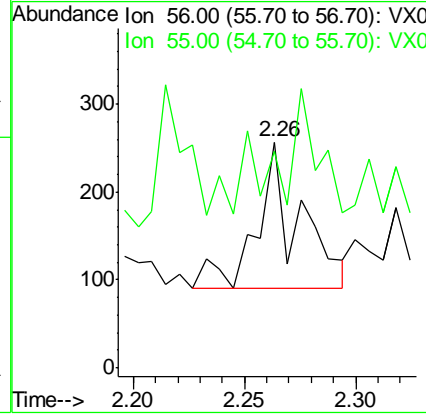
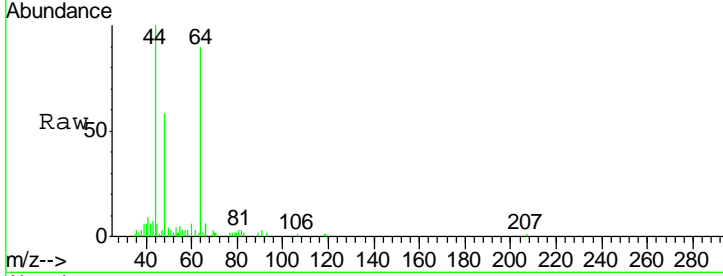




#13
 Acrolein
 Concen: 0.51 ug/l
 RT: 2.26 min Scan# 275
 Delta R.T. -0.04 min
 Lab File: VX002145.D
 Acq: 30 May 2018 19:05

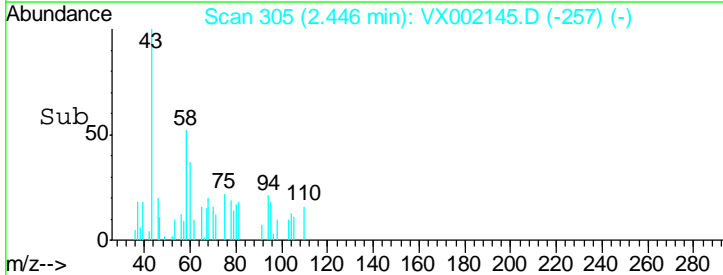
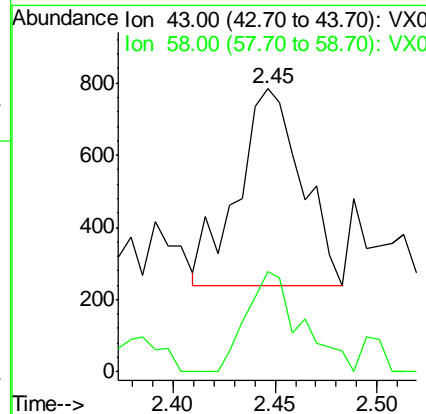
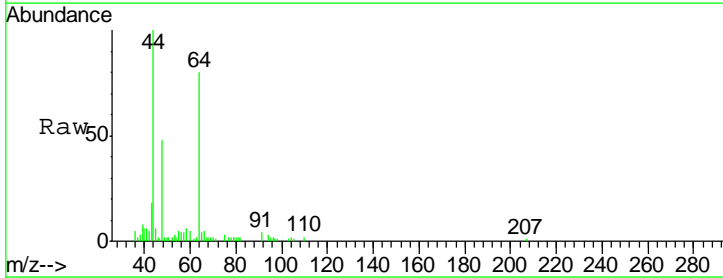
Instrument :
 MSVOA_X
 ClientSampled :
 MW-22

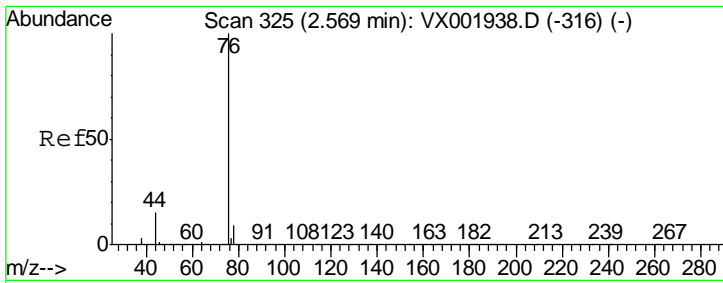
Tgt Ion: 56 Resp: 219
 Ion Ratio Lower Upper
 56 100
 55 21.9 56.8 85.2#



#16
 Acetone
 Concen: 0.61 ug/l
 RT: 2.45 min Scan# 305
 Delta R.T. -0.01 min
 Lab File: VX002145.D
 Acq: 30 May 2018 19:05

Tgt Ion: 43 Resp: 1198
 Ion Ratio Lower Upper
 43 100
 58 50.8 22.3 33.5#

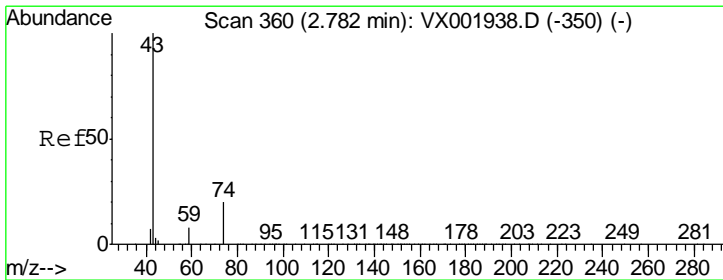
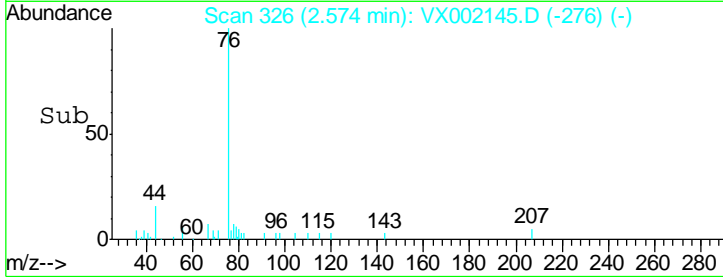
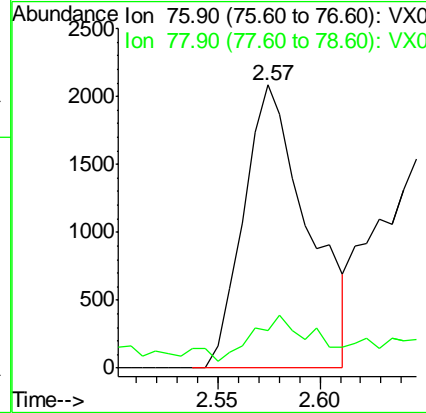
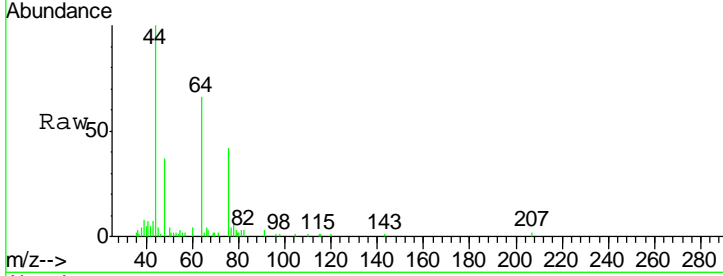




#17
 Carbon Disulfide
 Concen: 0.48 ug/l
 RT: 2.57 min Scan# 326
 Delta R.T. 0.01 min
 Lab File: VX002145.D
 Acq: 30 May 2018 19:05

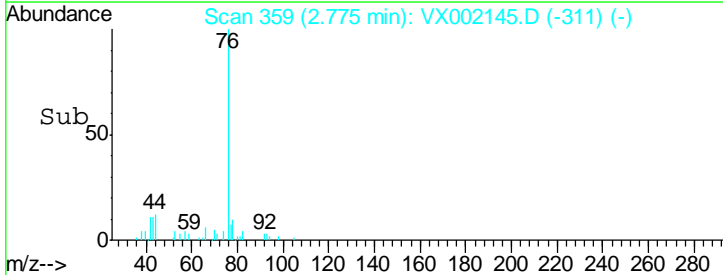
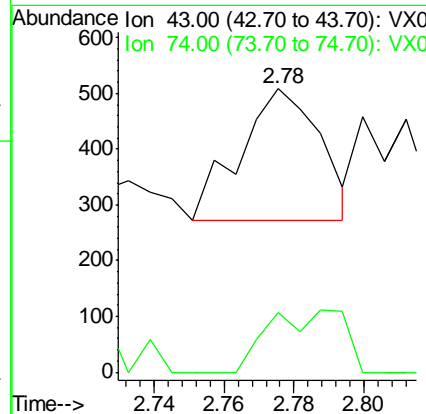
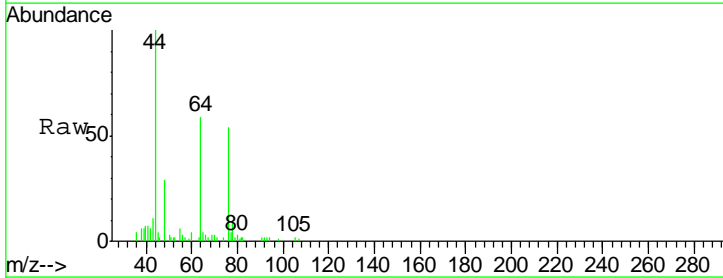
Instrument :
 MSVOA_X
 ClientSampled :
 MW-22

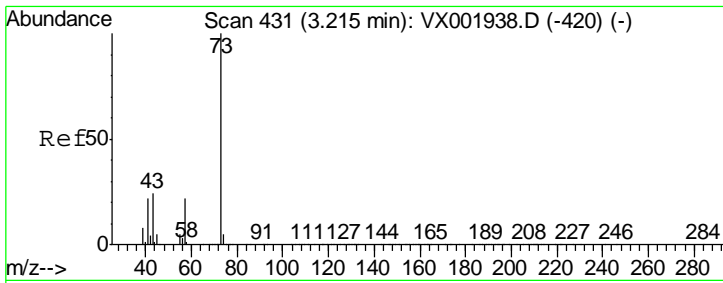
Tgt Ion: 76 Resp: 4551
 Ion Ratio Lower Upper
 76 100
 78 6.4 7.4 11.2#



#18
 Methyl Acetate
 Concen: Below Cal
 RT: 2.78 min Scan# 359
 Delta R.T. -0.01 min
 Lab File: VX002145.D
 Acq: 30 May 2018 19:05

Tgt Ion: 43 Resp: 376
 Ion Ratio Lower Upper
 43 100
 74 0.0 16.8 25.2#

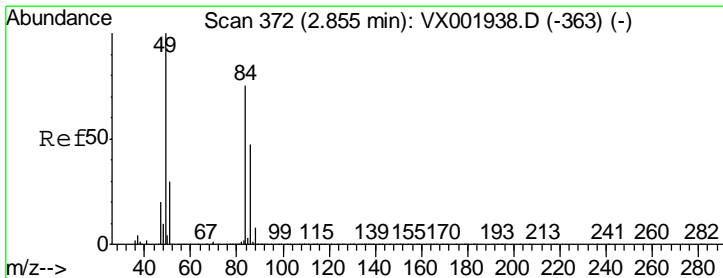
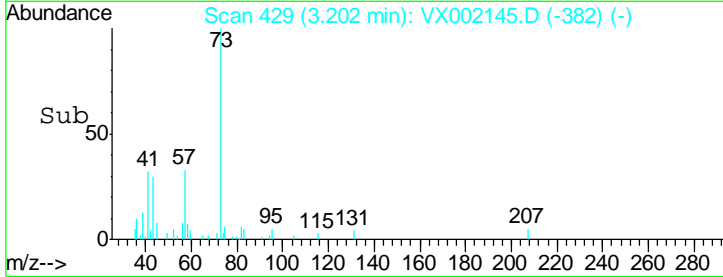
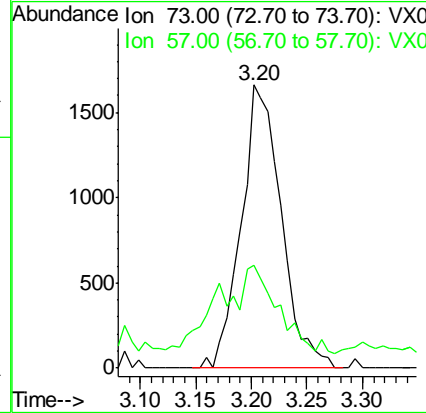
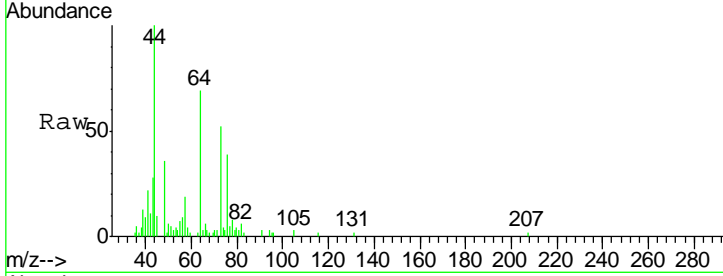




#19
 Methyl tert-butyl Ether
 Concen: 0.34 ug/l
 RT: 3.20 min Scan# 429
 Delta R.T. -0.01 min
 Lab File: VX002145.D
 Acq: 30 May 2018 19:05

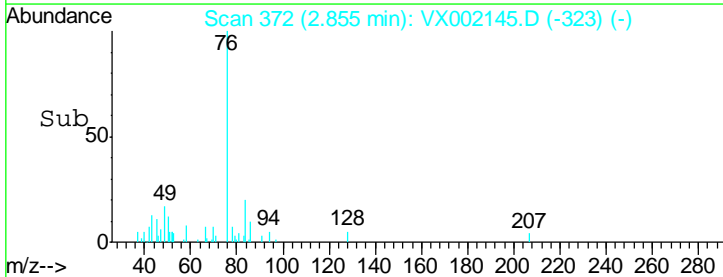
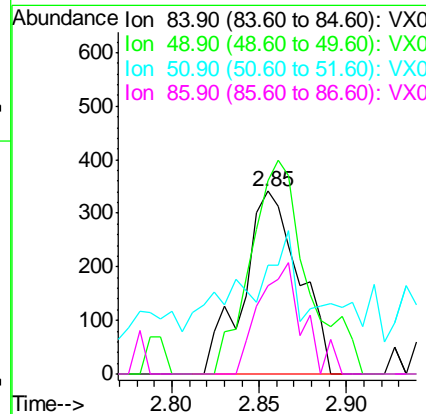
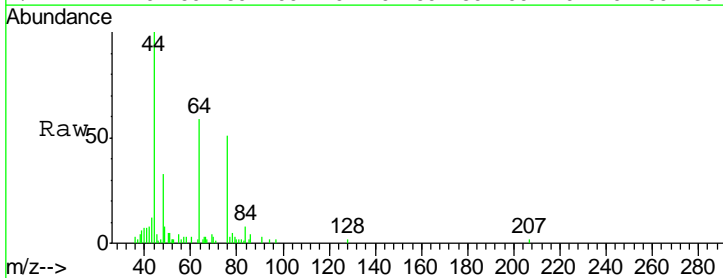
Instrument :
 MSVOA_X
 ClientSampled :
 MW-22

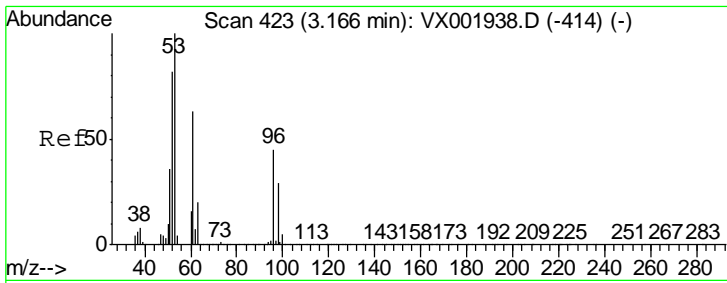
Tgt Ion: 73 Resp: 4157
 Ion Ratio Lower Upper
 73 100
 57 30.0 17.4 26.0#



#20
 Methylene Chloride
 Concen: Below Cal
 RT: 2.85 min Scan# 372
 Delta R.T. -0.00 min
 Lab File: VX002145.D
 Acq: 30 May 2018 19:05

Tgt Ion: 84 Resp: 757
 Ion Ratio Lower Upper
 84 100
 49 105.6 107.2 160.8#
 51 26.1 32.4 48.6#
 86 48.4 50.4 75.6#

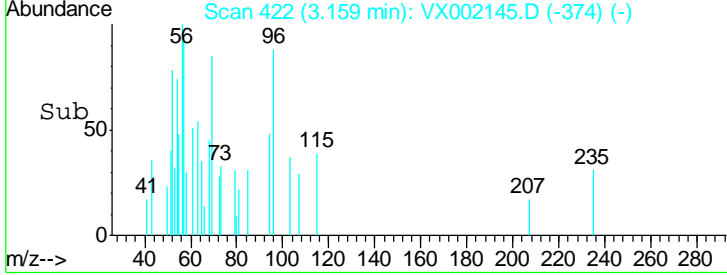
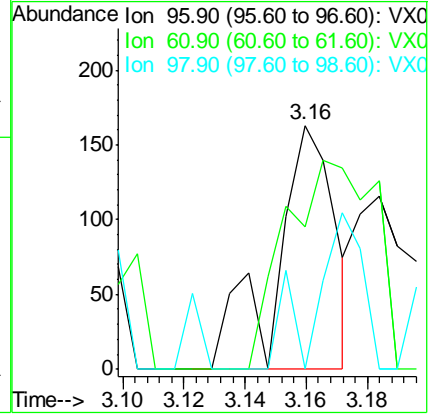
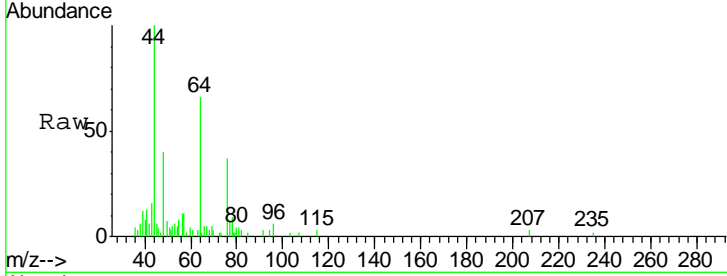




#21
 trans-1,2-Dichloroethene
 Concen: Below Cal
 RT: 3.16 min Scan# 422
 Delta R.T. -0.01 min
 Lab File: VX002145.D
 Acq: 30 May 2018 19:05

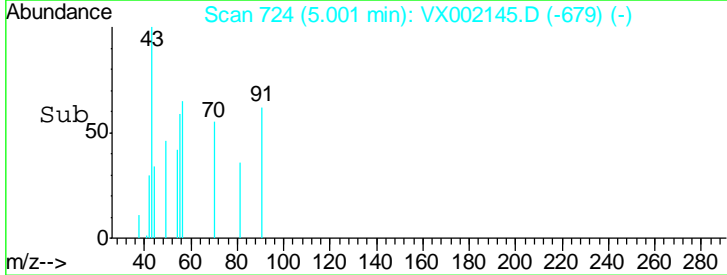
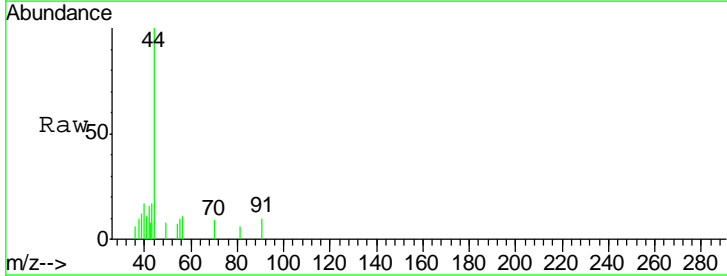
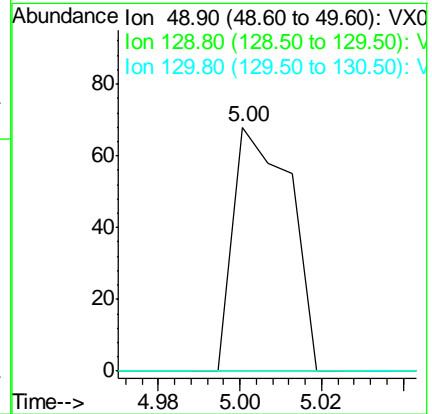
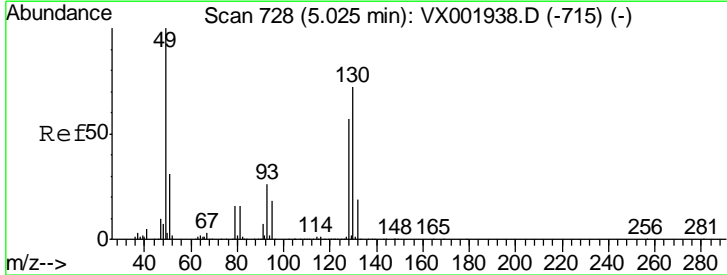
Instrument :
 MSVOA_X
ClientSampled :
 MW-22

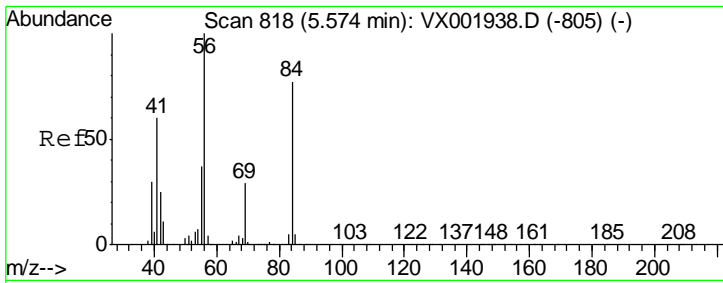
Tgt Ion	Resp	Lower	Upper
96	100		
61	58.3	113.3	169.9#
98	0.0	51.7	77.5#



#28
 Bromochloromethane
 Concen: Below Cal
 RT: 5.00 min Scan# 724
 Delta R.T. -0.02 min
 Lab File: VX002145.D
 Acq: 30 May 2018 19:05

Tgt Ion	Resp	Lower	Upper
49	100		
129	0.0	0.0	3.8
130	0.0	59.4	89.2#

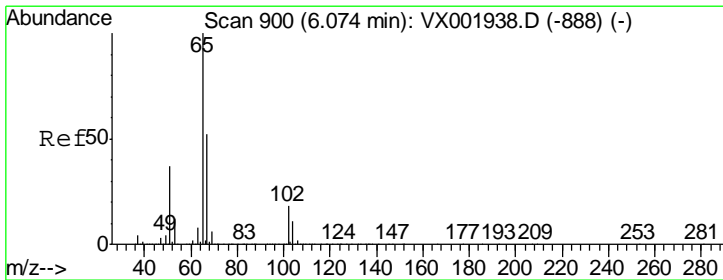
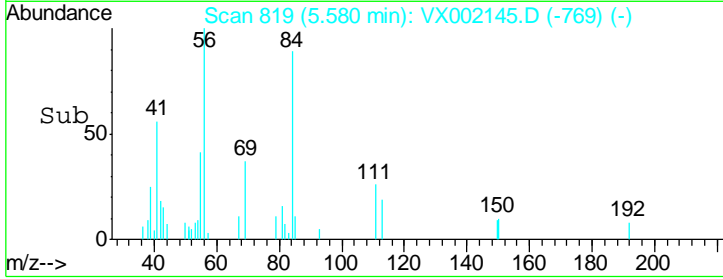
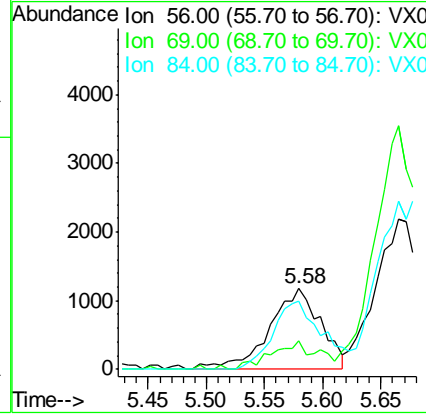
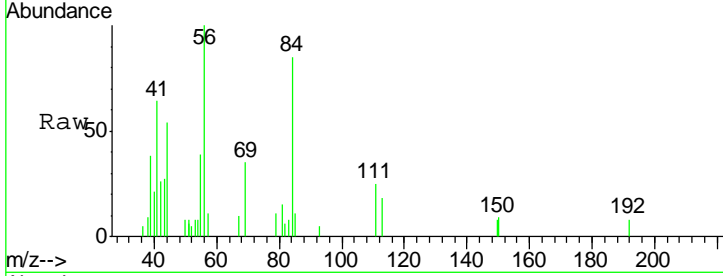




#31
 Cyclohexane
 Concen: 0.51 ug/l
 RT: 5.58 min Scan# 819
 Delta R.T. 0.01 min
 Lab File: VX002145.D
 Acq: 30 May 2018 19:05

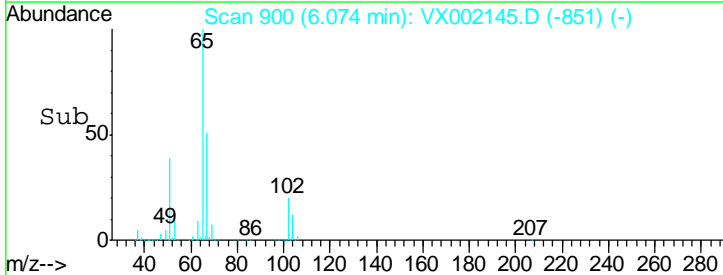
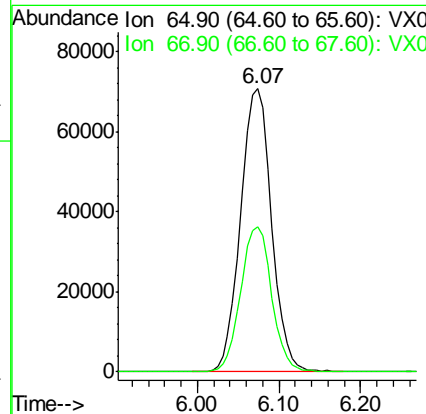
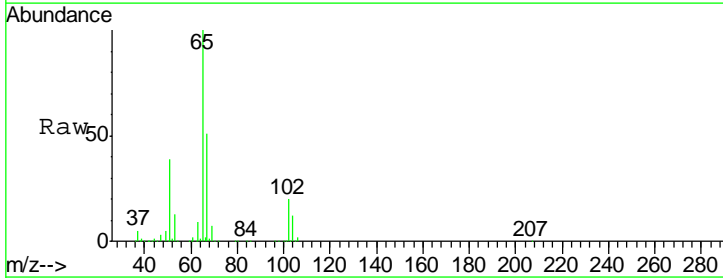
Instrument :
 MSVOA_X
 ClientSampled :
 MW-22

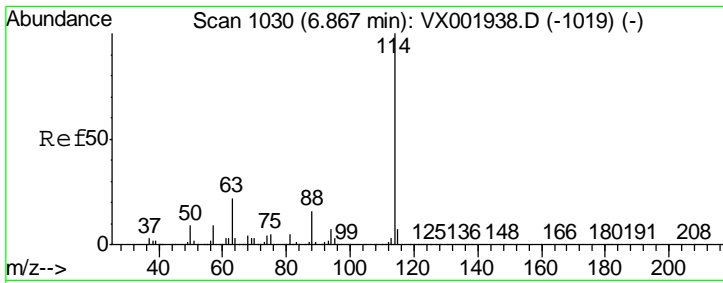
Tgt Ion	Resp	Lower	Upper
56	100		
69	35.1	23.1	34.7#
84	85.1	62.0	93.0



#33
 1,2-Dichloroethane-d4
 Concen: 36.86 ug/l
 RT: 6.07 min Scan# 900
 Delta R.T. -0.00 min
 Lab File: VX002145.D
 Acq: 30 May 2018 19:05

Tgt Ion	Resp	Lower	Upper
65	100		
67	51.4	0.0	104.0

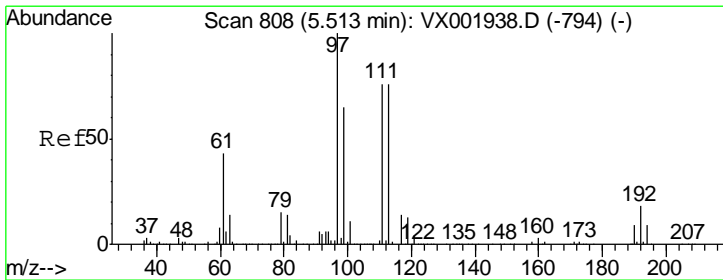
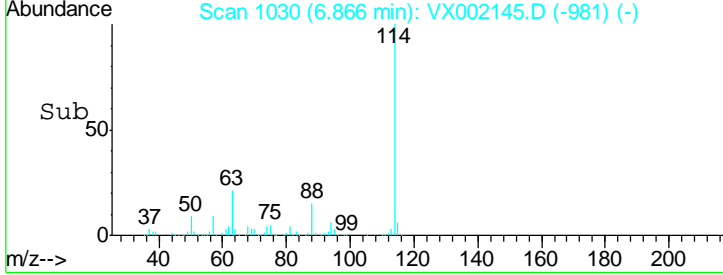
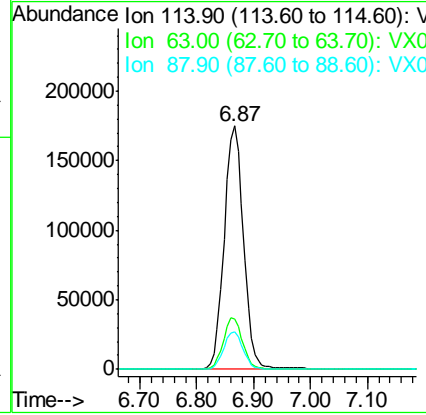
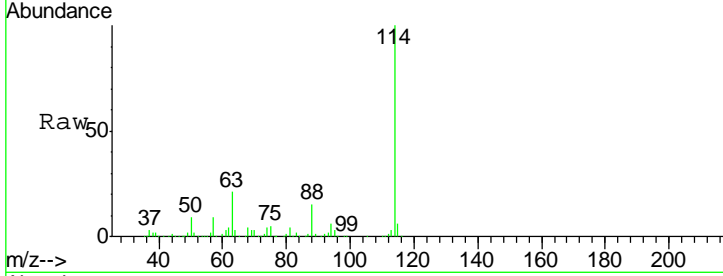




#34
 1,4-Difluorobenzene
 Concen: 50.00 ug/l
 RT: 6.87 min Scan# 1030
 Delta R.T. -0.00 min
 Lab File: VX002145.D
 Acq: 30 May 2018 19:05

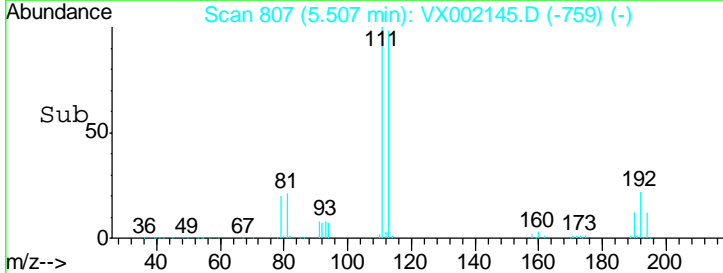
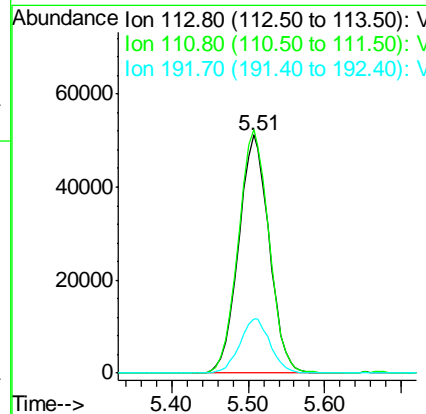
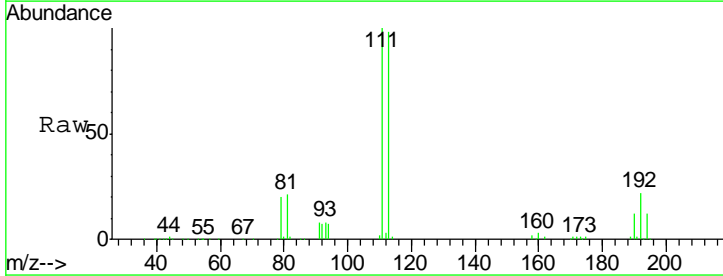
Instrument : MSVOA_X
 ClientSampled : MW-22

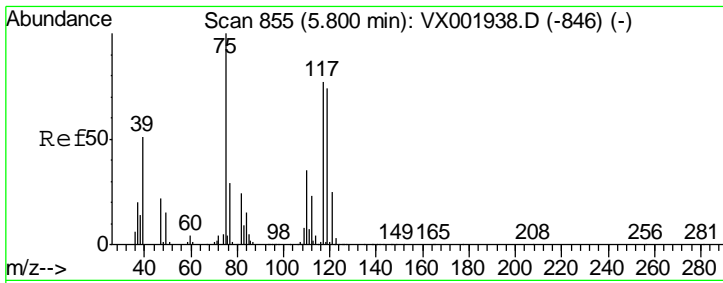
Tgt Ion	Resp	Lower	Upper
114	100		
63	20.6	0.0	43.2
88	15.2	0.0	31.6



#35
 Dibromofluoromethane
 Concen: 34.06 ug/l
 RT: 5.51 min Scan# 807
 Delta R.T. -0.01 min
 Lab File: VX002145.D
 Acq: 30 May 2018 19:05

Tgt Ion	Resp	Lower	Upper
113	100		
111	103.0	82.0	123.0
192	23.0	18.9	28.3

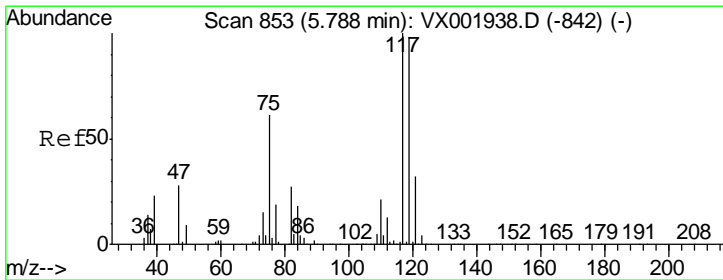
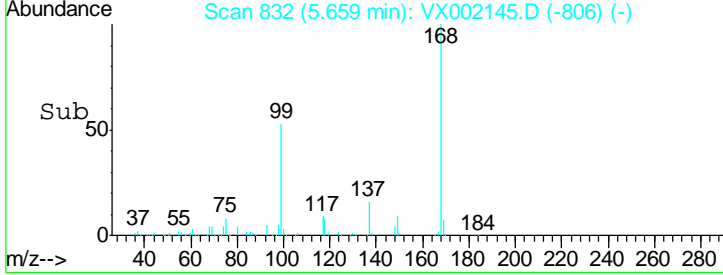
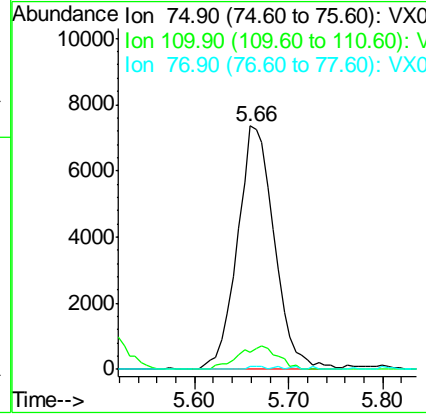
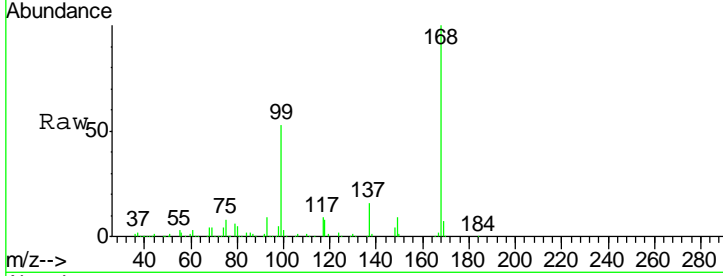




#36
 1,1-Dichloropropene
 Concen: 3.49 ug/l
 RT: 5.66 min Scan# 832
 Delta R.T. -0.14 min
 Lab File: VX002145.D
 Acq: 30 May 2018 19:05

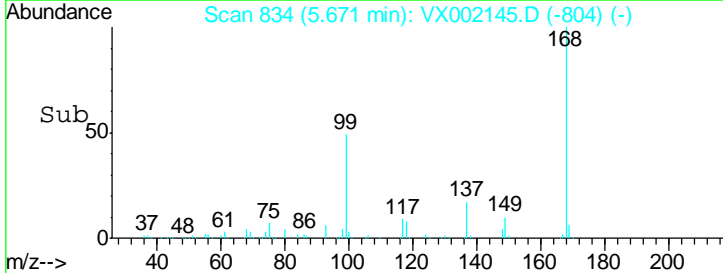
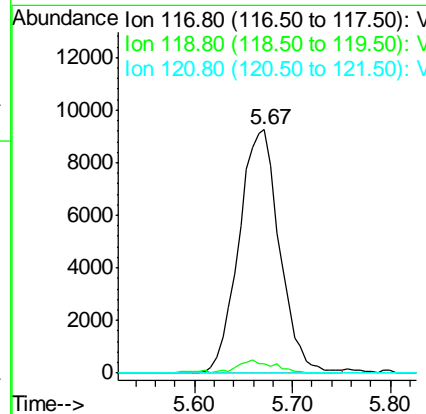
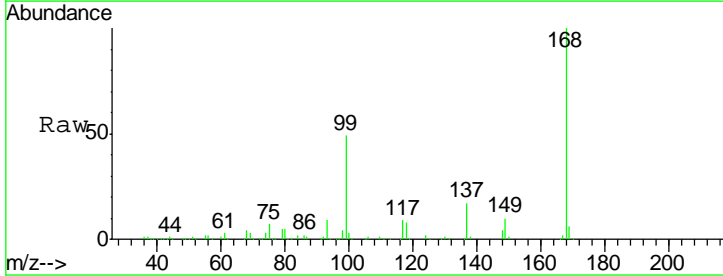
Instrument :
 MSVOA_X
ClientSampled :
 MW-22

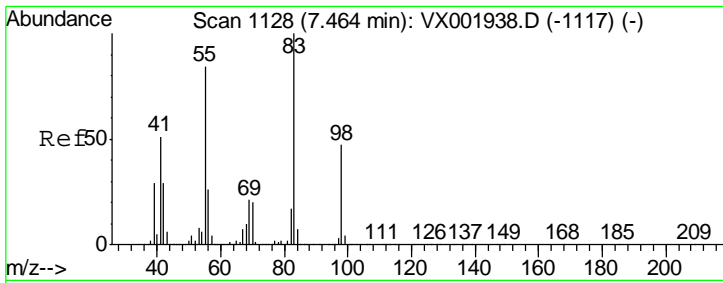
Tgt Ion	Resp	Lower	Upper
75	100		
110	10.2	17.4	52.2#
77	0.5	24.4	36.6#



#38
 Carbon Tetrachloride
 Concen: 3.95 ug/l
 RT: 5.67 min Scan# 834
 Delta R.T. -0.12 min
 Lab File: VX002145.D
 Acq: 30 May 2018 19:05

Tgt Ion	Resp	Lower	Upper
117	100		
119	3.7	78.5	117.7#
121	0.0	25.5	38.3#

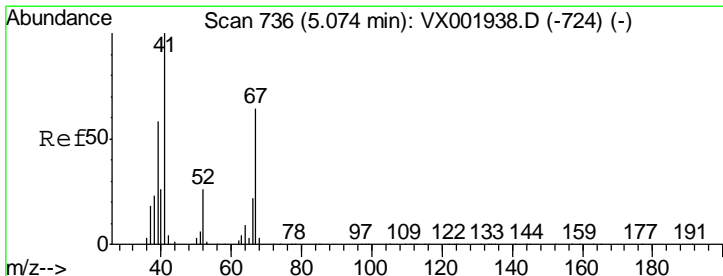
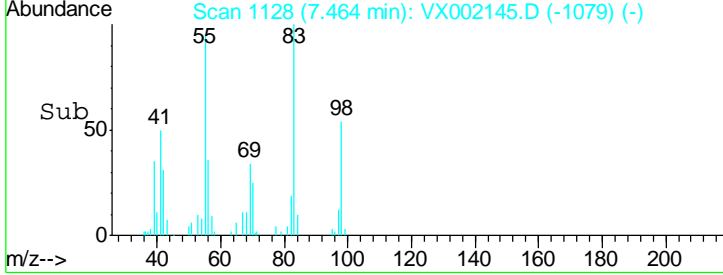
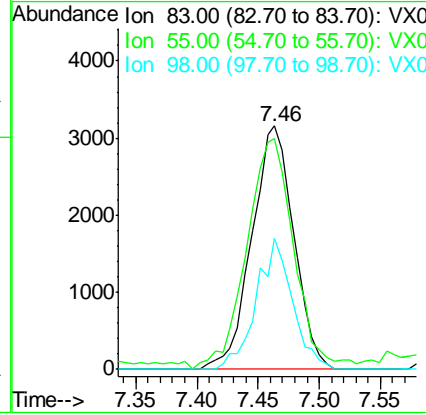
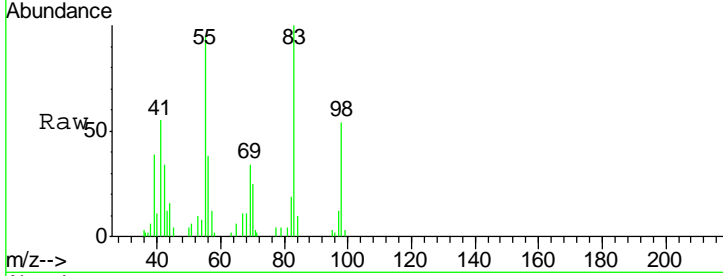




#39
 Methylcyclohexane
 Concen: 1.06 ug/l
 RT: 7.46 min Scan# 1128
 Delta R.T. -0.00 min
 Lab File: VX002145.D
 Acq: 30 May 2018 19:05

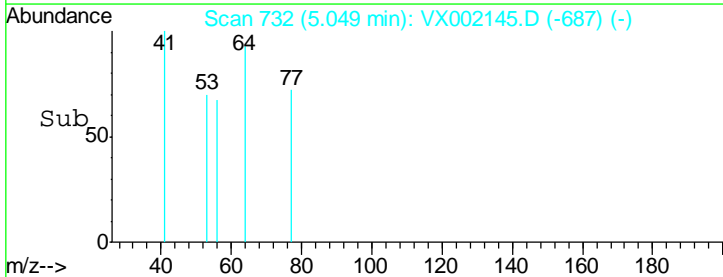
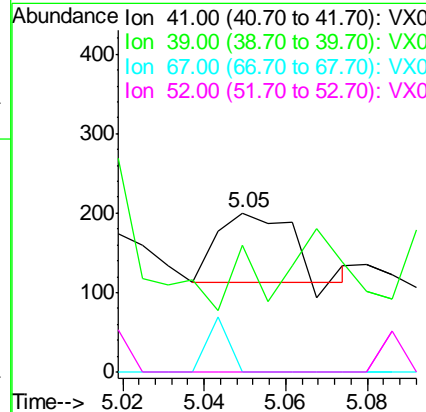
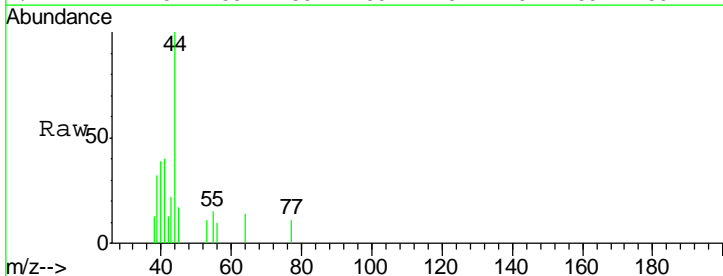
Instrument :
 MSVOA_X
 ClientSampled :
 MW-22

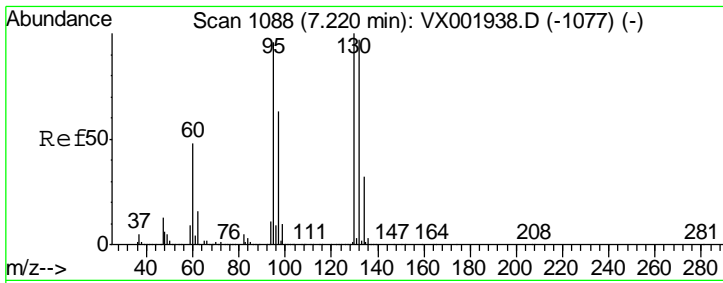
Tgt Ion	Resp	Lower	Upper
83	100		
55	95.0	67.3	100.9
98	53.7	37.5	56.3



#41
 Methacrylonitrile
 Concen: Below Cal
 RT: 5.05 min Scan# 732
 Delta R.T. -0.02 min
 Lab File: VX002145.D
 Acq: 30 May 2018 19:05

Tgt Ion	Resp	Lower	Upper
41	100		
39	0.0	46.0	69.0#
67	23.6	50.6	75.8#
52	0.0	21.9	32.9#

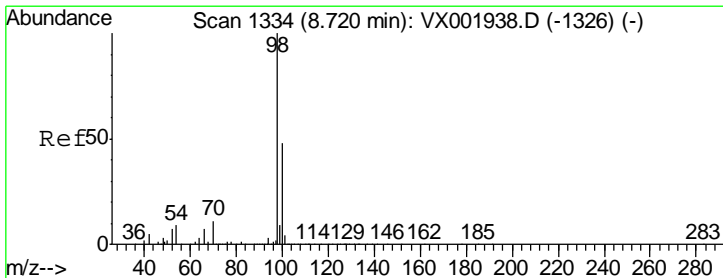
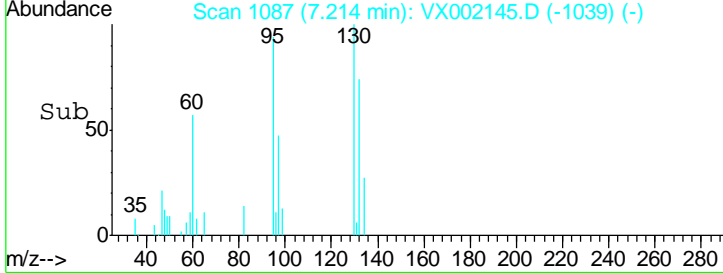
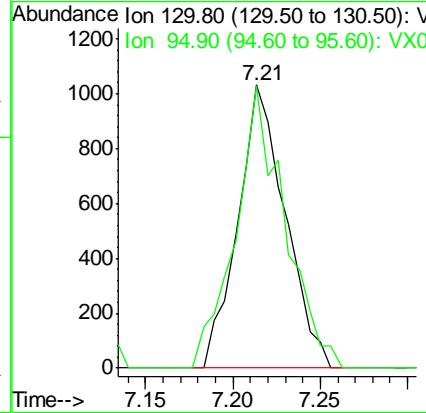
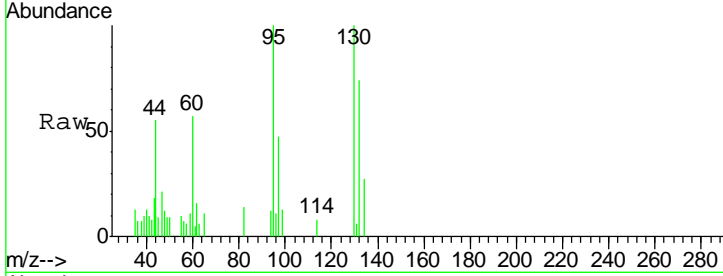




#44
 Trichloroethene
 Concen: 0.39 ug/l
 RT: 7.21 min Scan# 1087
 Delta R.T. -0.01 min
 Lab File: VX002145.D
 Acq: 30 May 2018 19:05

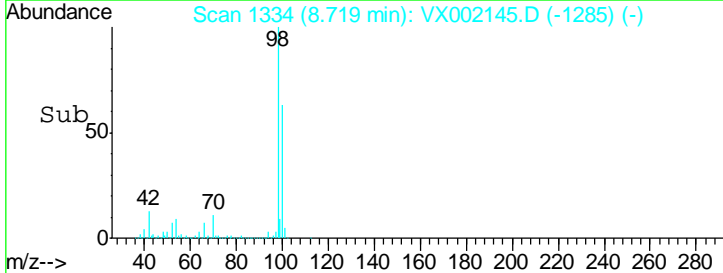
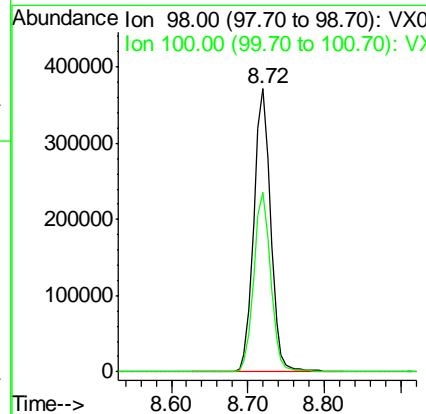
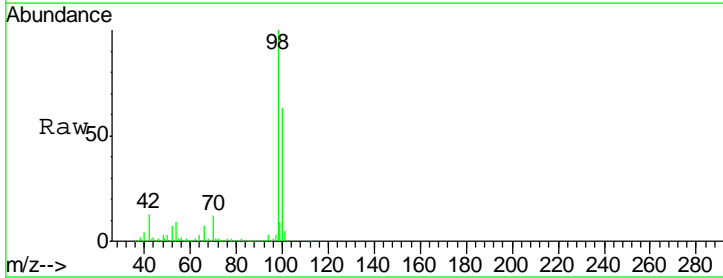
Instrument : MSVOA_X
 ClientSampled : MW-22

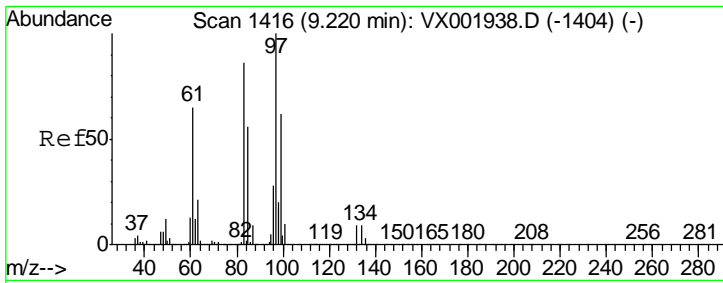
Tgt Ion: 130 Resp: 1937
 Ion Ratio Lower Upper
 130 100
 95 99.5 0.0 192.0



#50
 Toluene-d8
 Concen: 38.20 ug/l
 RT: 8.72 min Scan# 1334
 Delta R.T. 0.00 min
 Lab File: VX002145.D
 Acq: 30 May 2018 19:05

Tgt Ion: 98 Resp: 573952
 Ion Ratio Lower Upper
 98 100
 100 63.8 51.5 77.3

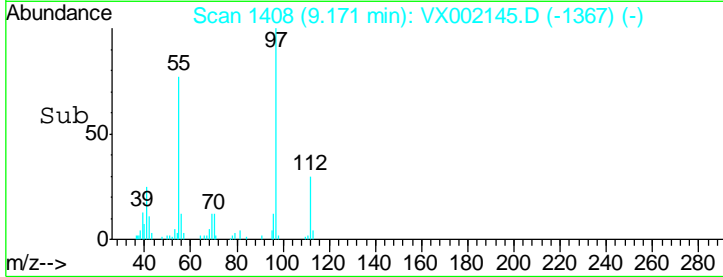
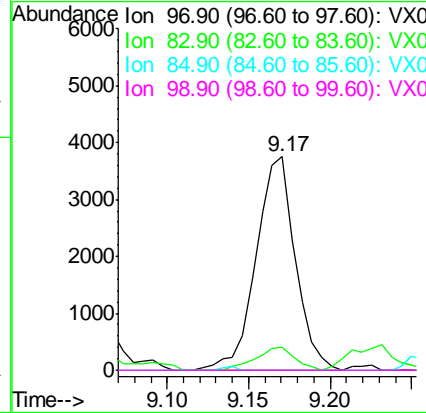
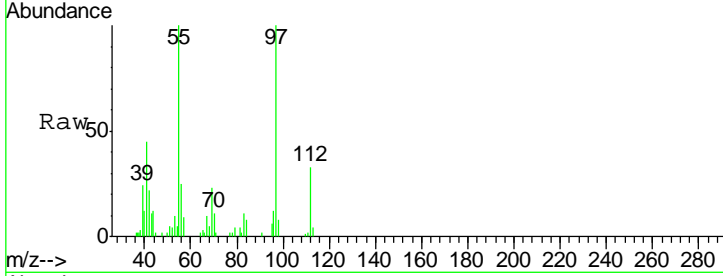




#55
 1,1,2-Trichloroethane
 Concen: 1.40 ug/l
 RT: 9.17 min Scan# 1408
 Delta R.T. -0.05 min
 Lab File: VX002145.D
 Acq: 30 May 2018 19:05

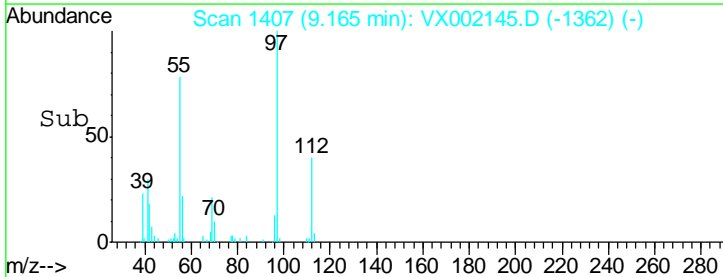
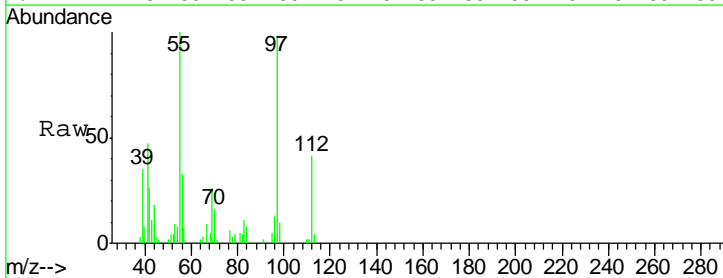
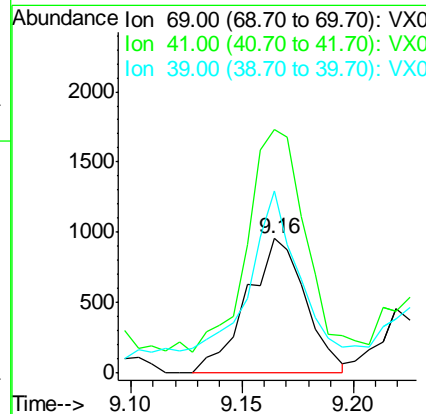
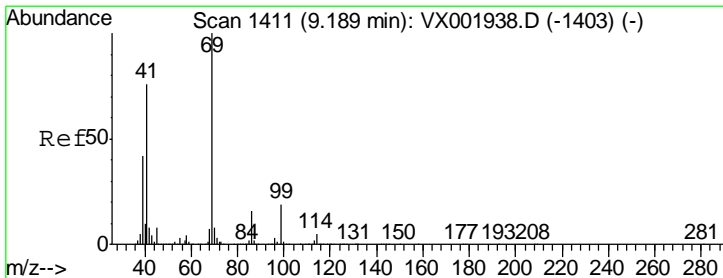
Instrument :
 MSVOA_X
ClientSampled :
 MW-22

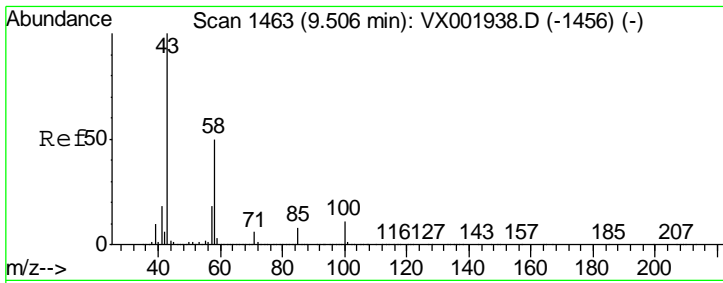
Tgt Ion	Resp	Lower	Upper
97	100		
83	11.1	69.1	103.7#
85	0.0	45.2	67.8#
99	0.0	49.6	74.4#



#56
 Ethyl methacrylate
 Concen: 0.23 ug/l
 RT: 9.16 min Scan# 1407
 Delta R.T. -0.02 min
 Lab File: VX002145.D
 Acq: 30 May 2018 19:05

Tgt Ion	Resp	Lower	Upper
69	100		
41	160.2	61.0	91.6#
39	110.1	34.4	51.6#

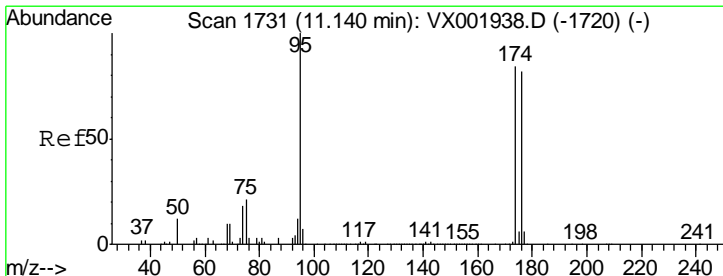
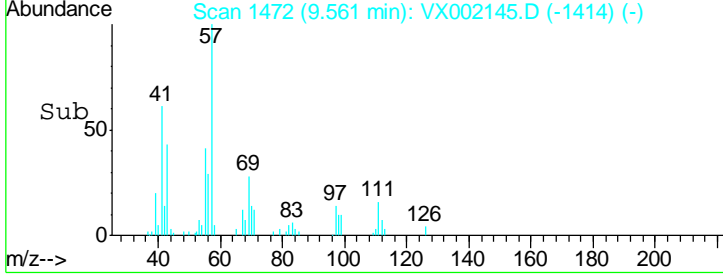
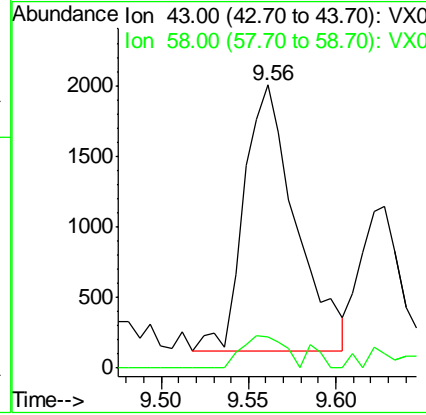
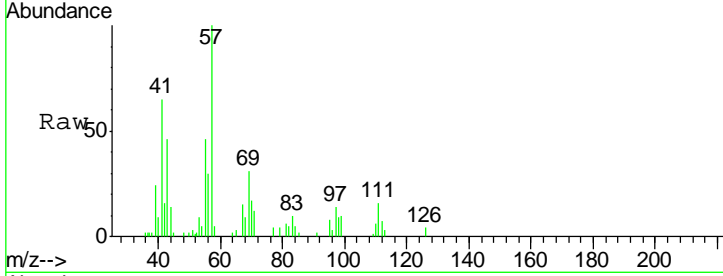




#59
 2-Hexanone
 Concen: 0.67 ug/l
 RT: 9.56 min Scan# 1472
 Delta R.T. 0.05 min
 Lab File: VX002145.D
 Acq: 30 May 2018 19:05

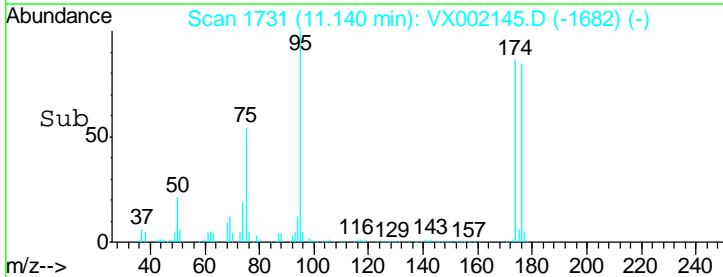
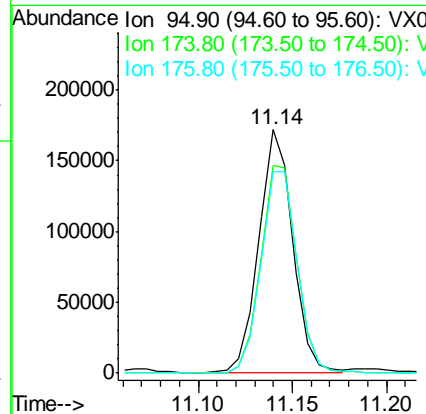
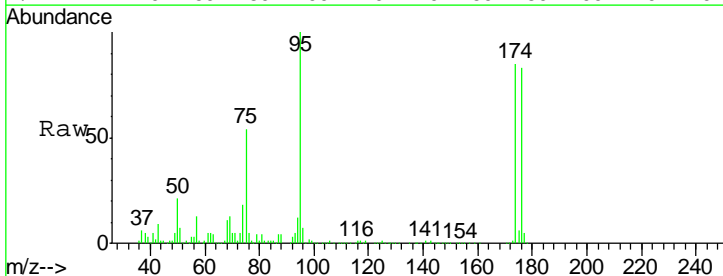
Instrument :
 MSVOA_X
 ClientSampled :
 MW-22

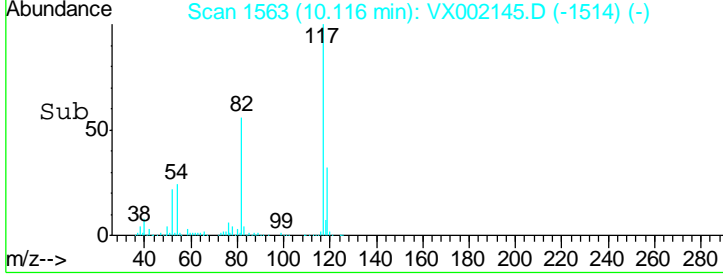
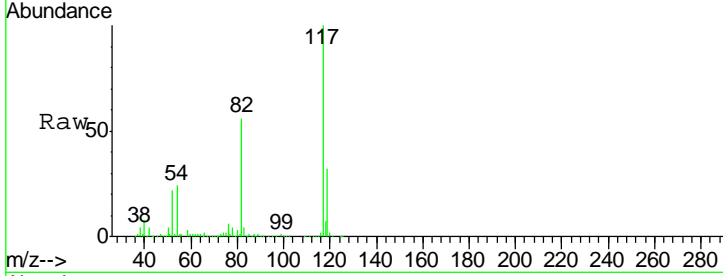
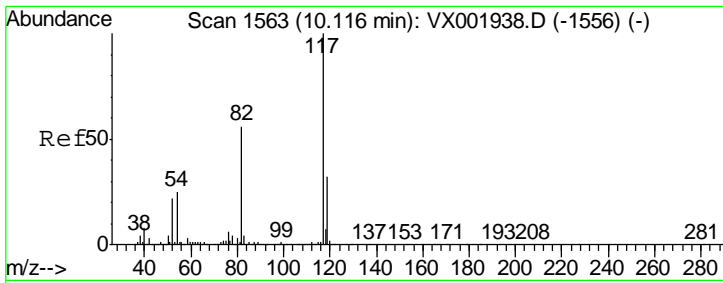
Tgt Ion: 43 Resp: 3881
 Ion Ratio Lower Upper
 43 100
 58 9.8 24.9 74.6#



#62
 4-Bromofluorobenzene
 Concen: 36.39 ug/l
 RT: 11.14 min Scan# 1731
 Delta R.T. -0.00 min
 Lab File: VX002145.D
 Acq: 30 May 2018 19:05

Tgt Ion: 95 Resp: 213919
 Ion Ratio Lower Upper
 95 100
 174 90.9 0.0 178.8
 176 88.9 0.0 175.6

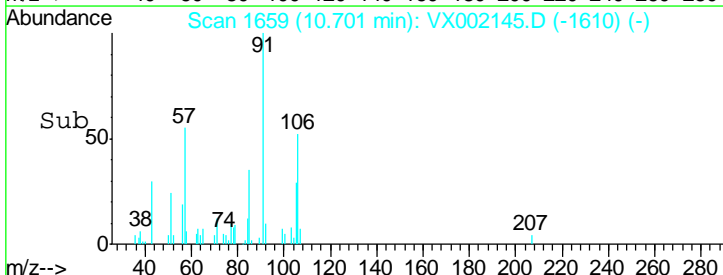
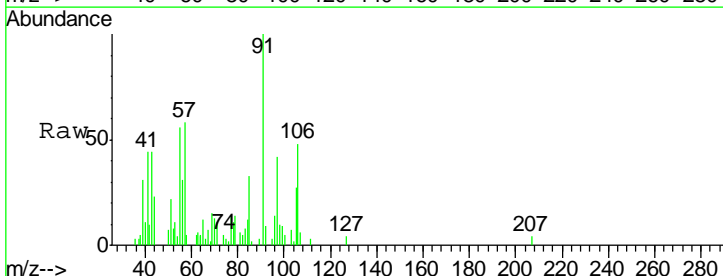
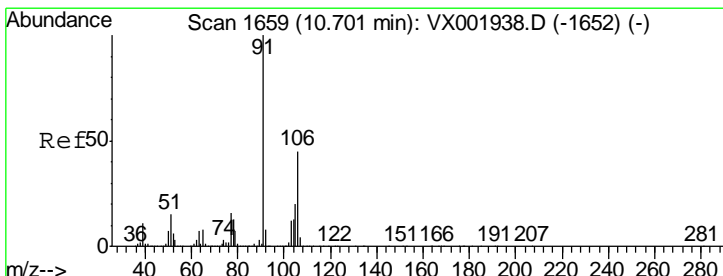
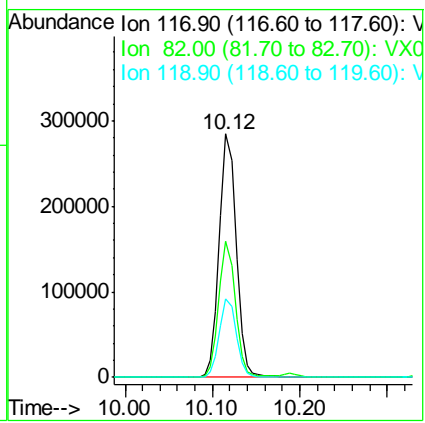




#63
 Chlorobenzene-d5
 Concen: 50.00 ug/l
 RT: 10.12 min Scan# 1563
 Delta R.T. -0.00 min
 Lab File: VX002145.D
 Acq: 30 May 2018 19:05

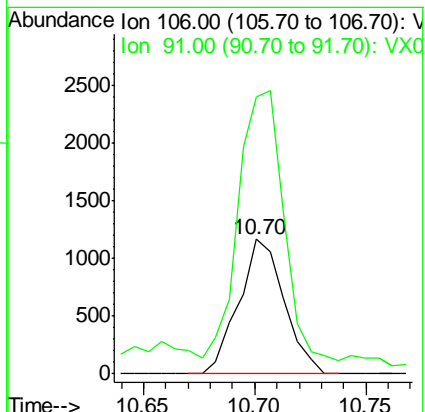
Instrument : MSVOA_X
 ClientSampled : MW-22

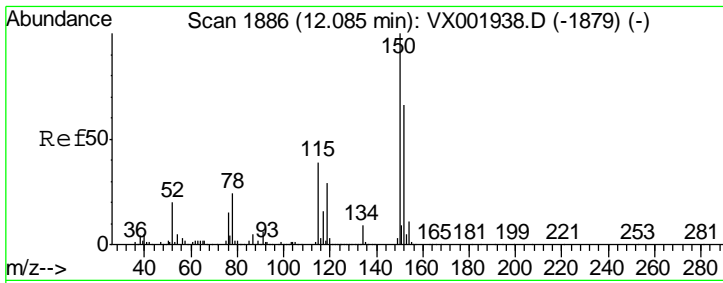
Tgt Ion	Resp	Lower	Upper
117	384339		
82	55.8	44.8	67.2
119	32.4	25.5	38.3



#69
 o-Xylene
 Concen: 0.20 ug/l
 RT: 10.70 min Scan# 1659
 Delta R.T. -0.00 min
 Lab File: VX002145.D
 Acq: 30 May 2018 19:05

Tgt Ion	Resp	Lower	Upper
106	1652		
91	203.7	108.7	325.9

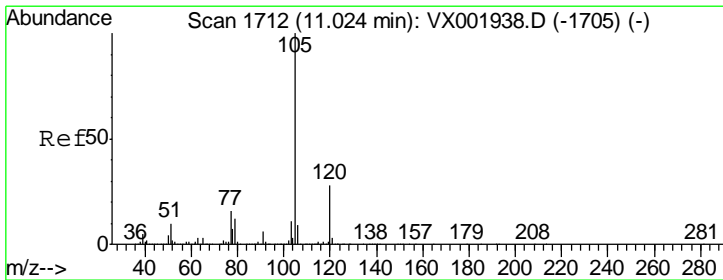
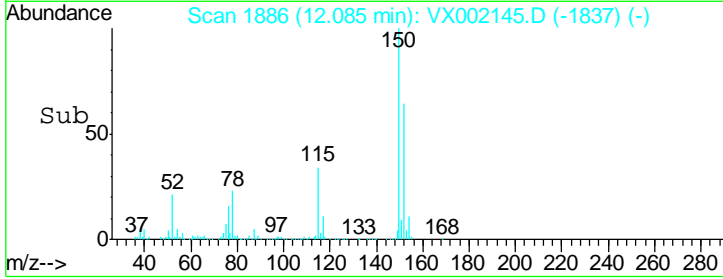
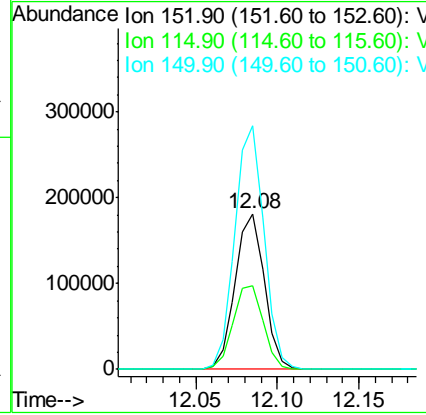
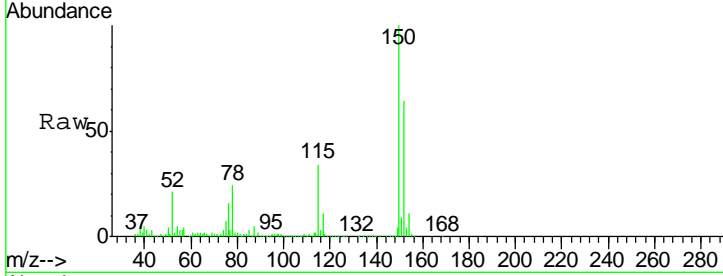




#72
 1,4-Dichlorobenzene-d4
 Concen: 50.00 ug/l
 RT: 12.08 min Scan# 1886
 Delta R.T. -0.00 min
 Lab File: VX002145.D
 Acq: 30 May 2018 19:05

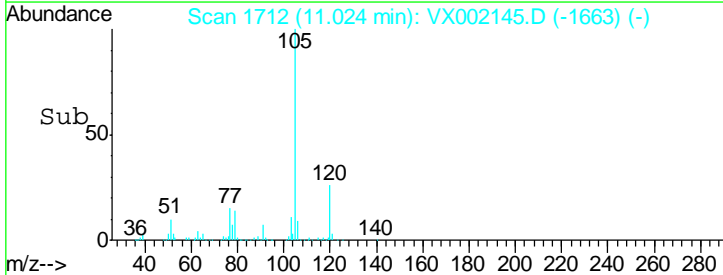
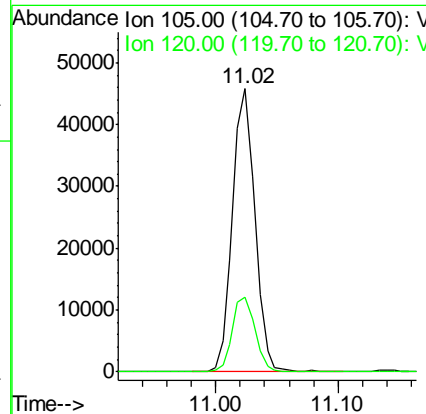
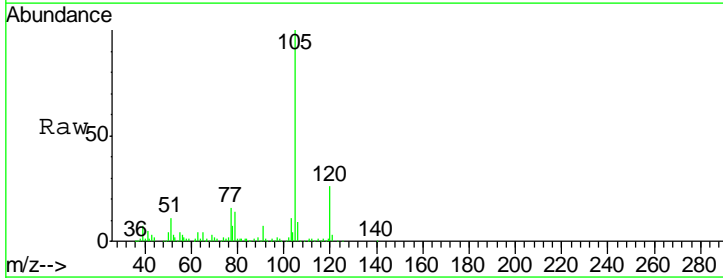
Instrument : MSVOA_X
 ClientSampled : MW-22

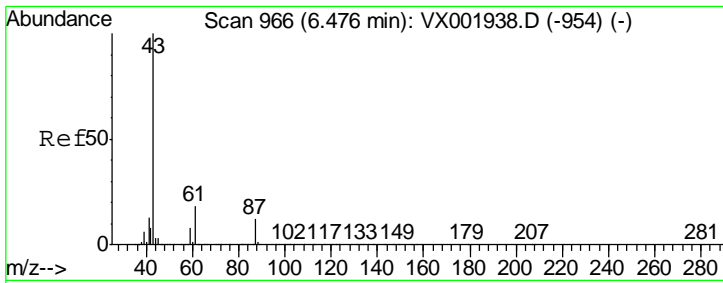
Tgt Ion	Resp	Lower	Upper
152	100		
115	55.7	42.3	126.8
150	156.0	0.0	351.0



#73
 Isopropylbenzene
 Concen: 3.03 ug/l
 RT: 11.02 min Scan# 1712
 Delta R.T. -0.00 min
 Lab File: VX002145.D
 Acq: 30 May 2018 19:05

Tgt Ion	Resp	Lower	Upper
105	100		
120	27.0	13.6	40.7

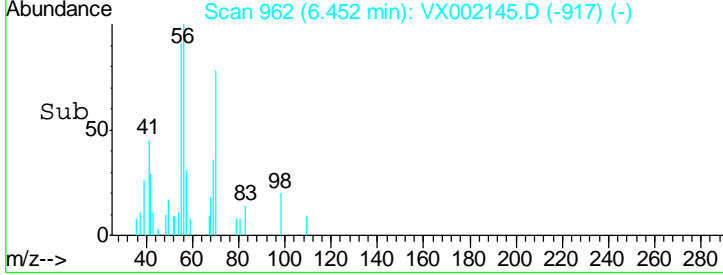
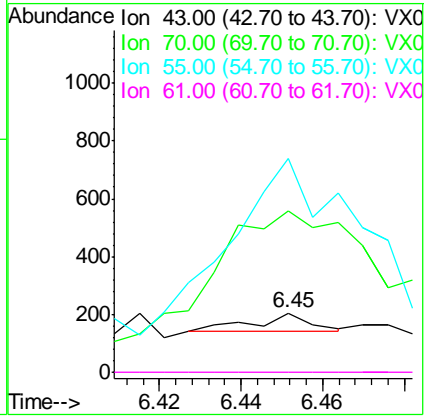
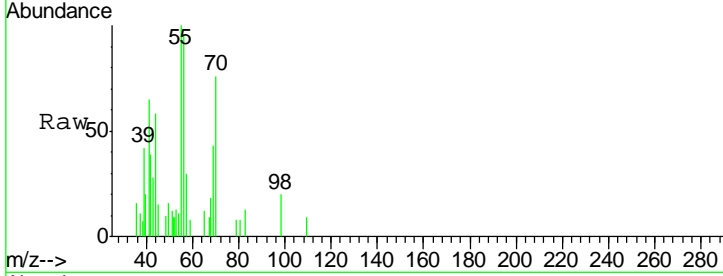




#74
 N-amyI acetate
 Concen: Below Cal
 RT: 6.45 min Scan# 962
 Delta R.T. -0.02 min
 Lab File: VX002145.D
 Acq: 30 May 2018 19:05

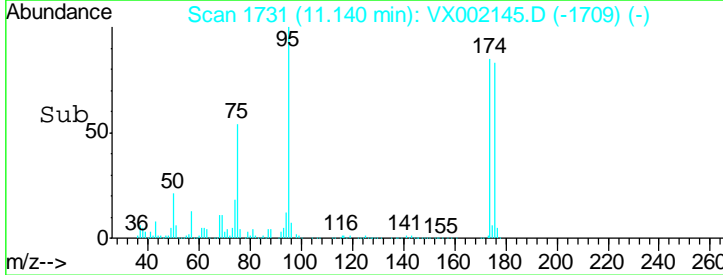
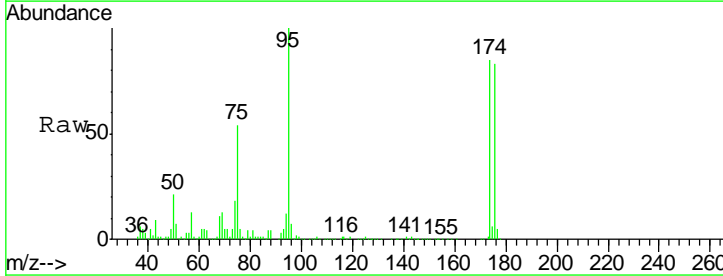
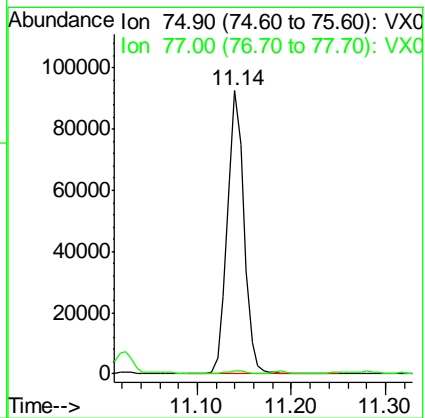
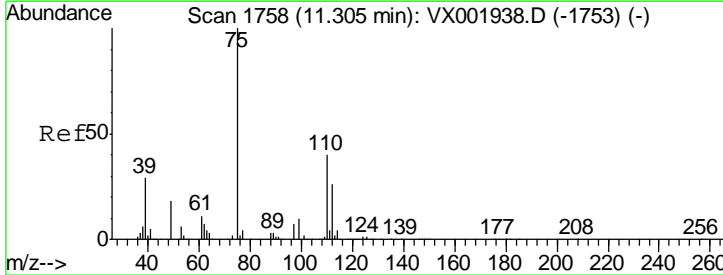
Instrument :
 MSVOA_X
ClientSampled :
 MW-22

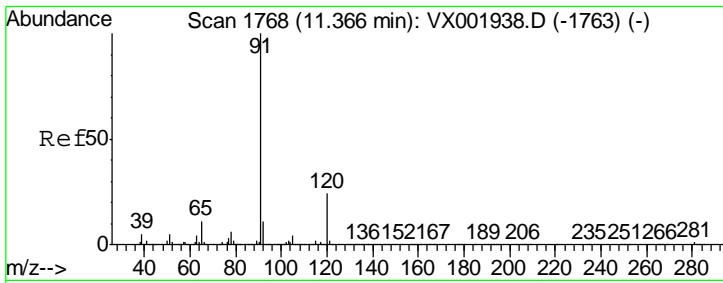
Tgt Ion	Resp	Lower	Upper
43	100		
70	2839.1	0.1	0.1#
55	2925.0	0.1	0.1#
61	0.0	14.5	21.7#



#76
 1,2,3-Trichloropropane
 Concen: 21.03 ug/l
 RT: 11.14 min Scan# 1731
 Delta R.T. -0.17 min
 Lab File: VX002145.D
 Acq: 30 May 2018 19:05

Tgt Ion	Resp	Lower	Upper
75	100		
77	1.1	22.8	68.3#

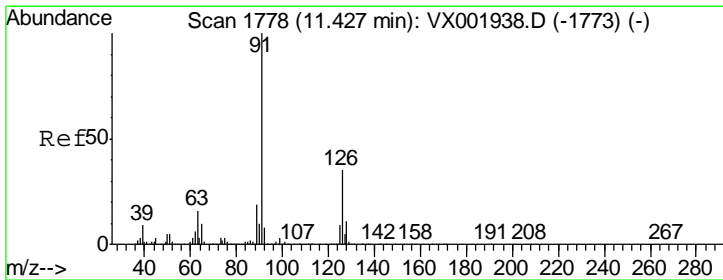
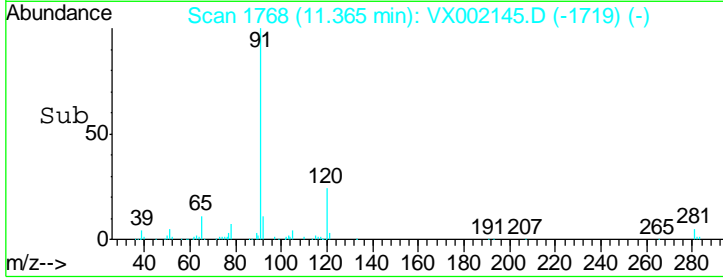
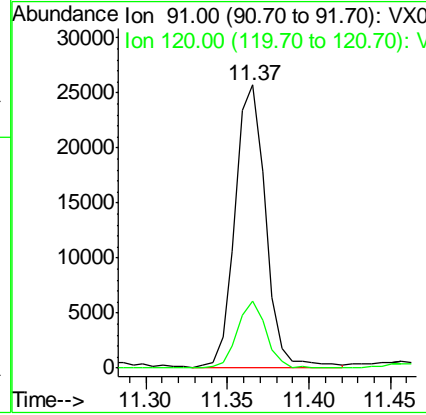
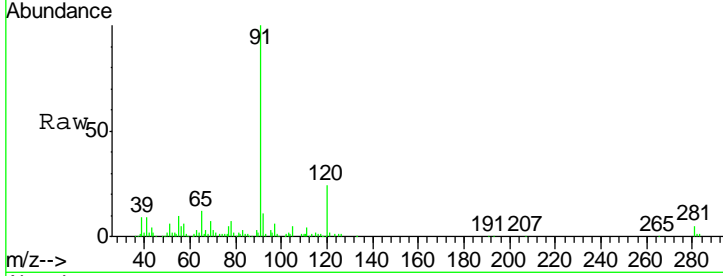




#78
 n-propylbenzene
 Concen: 1.55 ug/l
 RT: 11.37 min Scan# 1768
 Delta R.T. -0.00 min
 Lab File: VX002145.D
 Acq: 30 May 2018 19:05

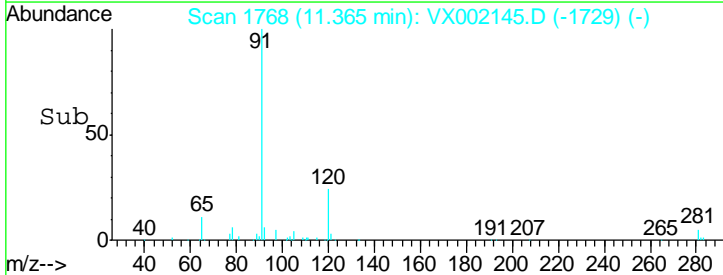
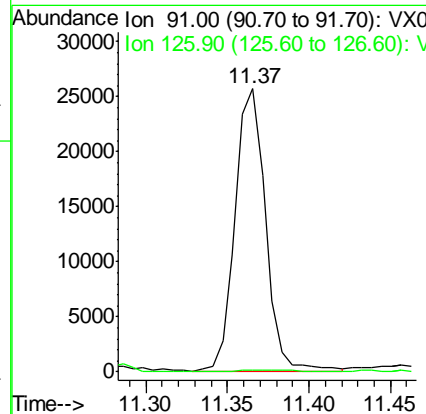
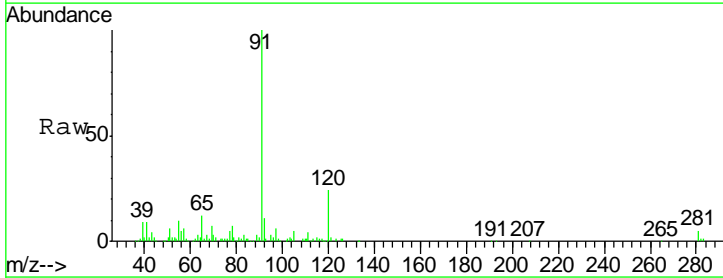
Instrument :
 MSVOA_X
 ClientSampled :
 MW-22

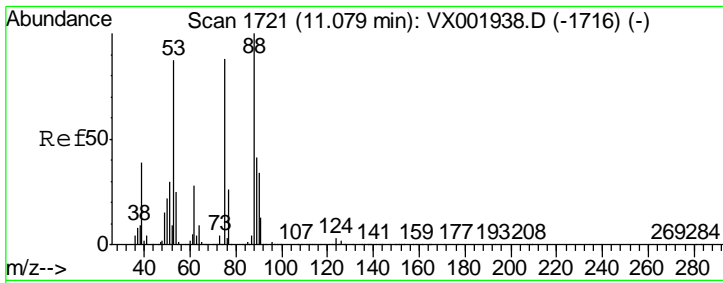
Tgt Ion: 91 Resp: 33249
 Ion Ratio Lower Upper
 91 100
 120 22.5 11.9 35.7



#79
 2-Chlorotoluene
 Concen: 0.54 ug/l
 RT: 11.37 min Scan# 1768
 Delta R.T. -0.06 min
 Lab File: VX002145.D
 Acq: 30 May 2018 19:05

Tgt Ion: 91 Resp: 33249
 Ion Ratio Lower Upper
 91 100
 126 1.1 17.4 52.2#

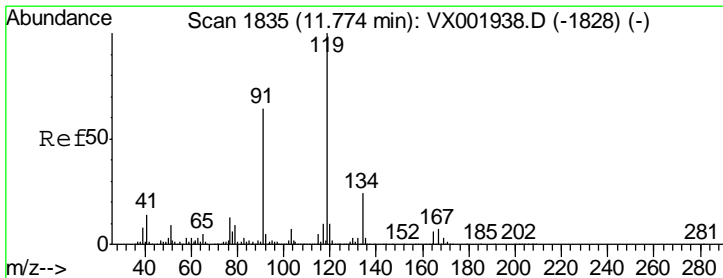
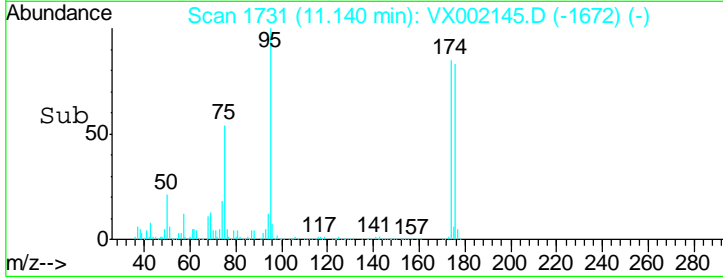
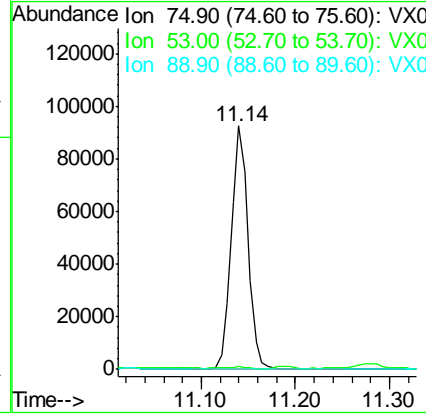
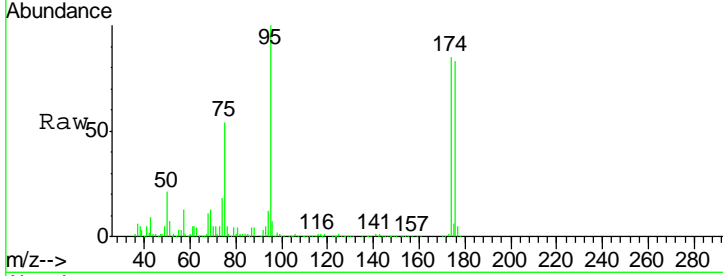




#81
 trans-1,4-Dichloro-2-butene
 Concen: 50.55 ug/l
 RT: 11.14 min Scan# 1731
 Delta R.T. 0.06 min
 Lab File: VX002145.D
 Acq: 30 May 2018 19:05

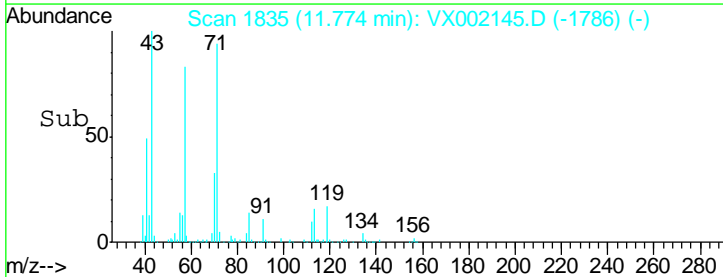
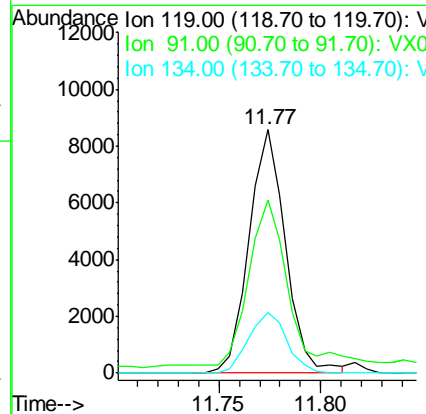
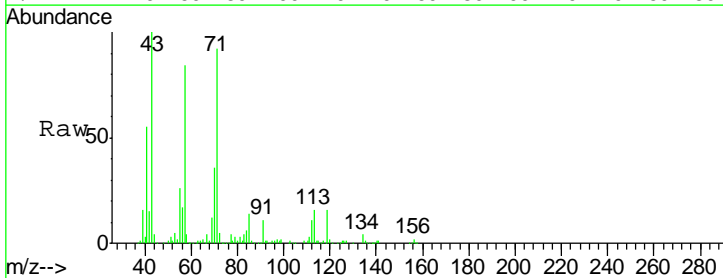
Instrument :
 MSVOA_X
 ClientSampled :
 MW-22

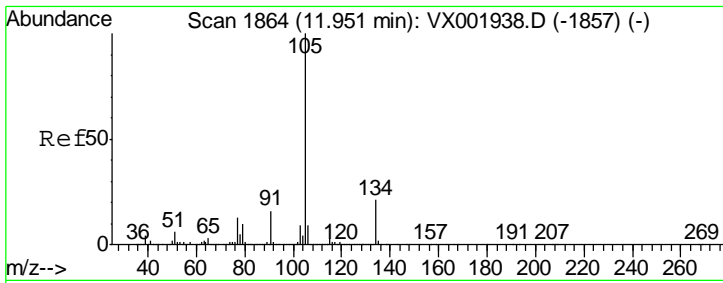
Tgt Ion	Resp	Lower	Upper
75	100		
53	1.1	78.0	117.0#
89	0.0	39.4	59.2#



#83
 tert-Butylbenzene
 Concen: 0.66 ug/l
 RT: 11.77 min Scan# 1835
 Delta R.T. -0.00 min
 Lab File: VX002145.D
 Acq: 30 May 2018 19:05

Tgt Ion	Resp	Lower	Upper
119	100		
91	71.8	30.6	91.8
134	26.0	11.7	35.0

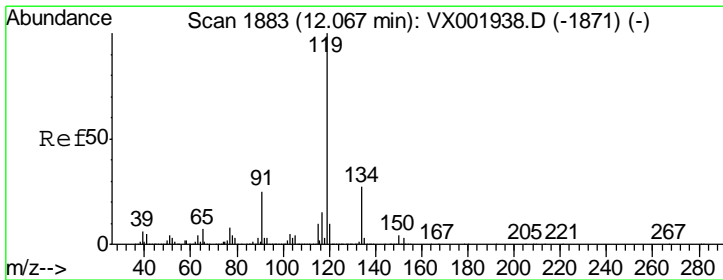
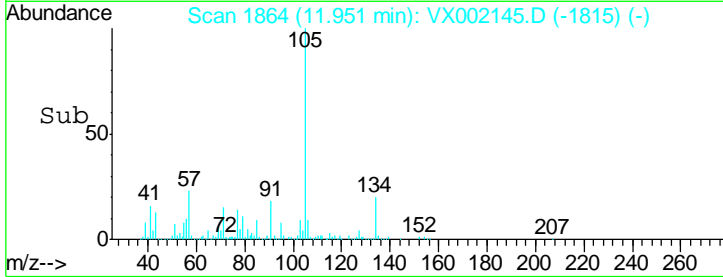
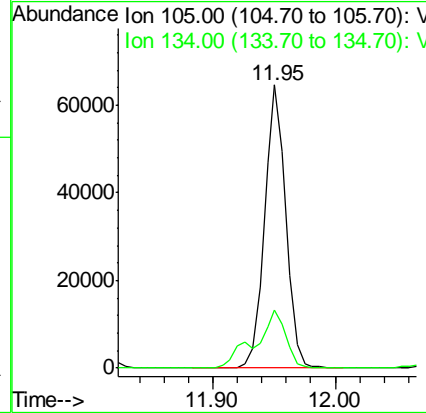
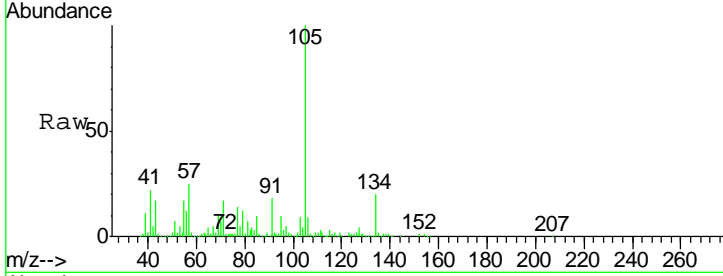




#85
 sec-Butylbenzene
 Concen: 4.05 ug/l
 RT: 11.95 min Scan# 1864
 Delta R.T. -0.00 min
 Lab File: VX002145.D
 Acq: 30 May 2018 19:05

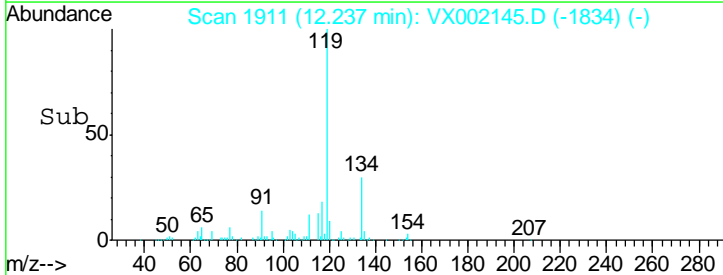
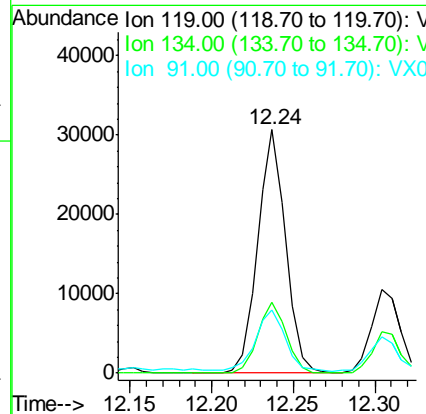
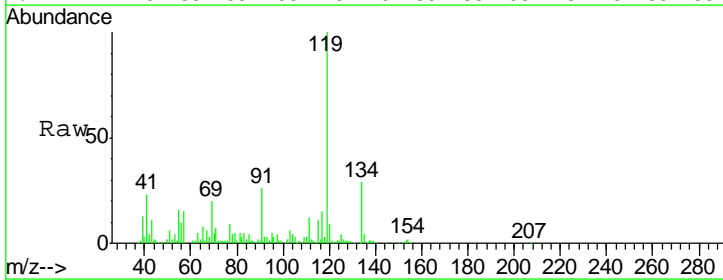
Instrument :
 MSVOA_X
 ClientSampled :
 MW-22

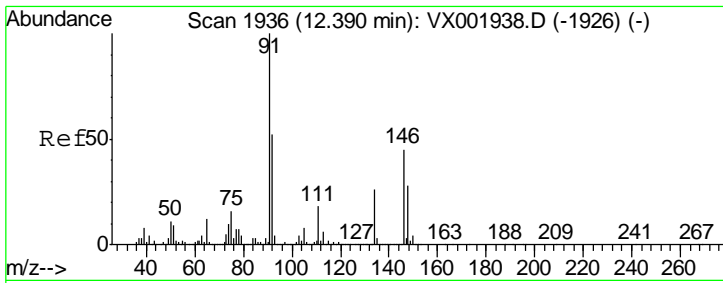
Tgt Ion: 105 Resp: 78281
 Ion Ratio Lower Upper
 105 100
 134 29.3 10.4 31.4



#86
 p-Isopropyltoluene
 Concen: 2.10 ug/l
 RT: 12.24 min Scan# 1911
 Delta R.T. 0.17 min
 Lab File: VX002145.D
 Acq: 30 May 2018 19:05

Tgt Ion: 119 Resp: 36294
 Ion Ratio Lower Upper
 119 100
 134 29.6 13.6 40.8
 91 26.5 12.2 36.4

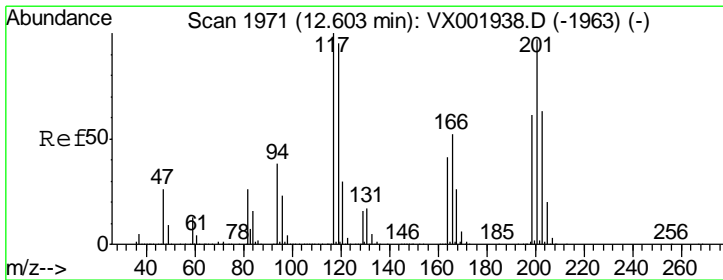
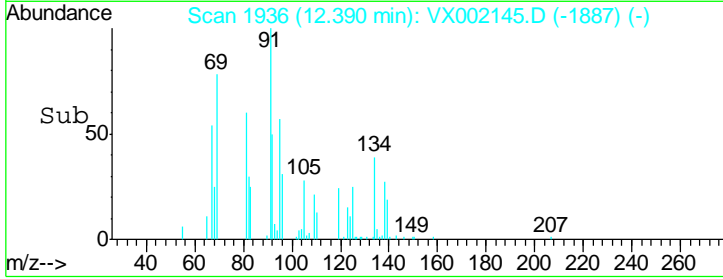
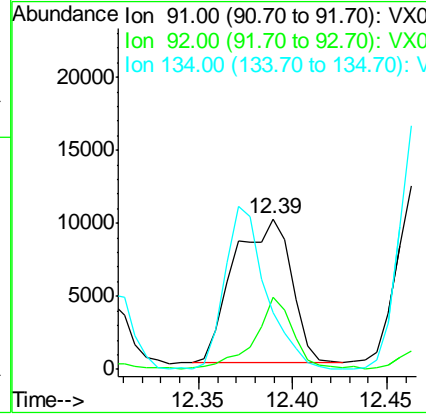
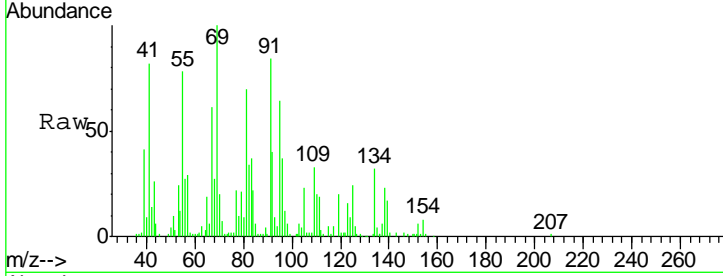




#89
 n-Butylbenzene
 Concen: 1.42 ug/l
 RT: 12.39 min Scan# 1936
 Delta R.T. -0.00 min
 Lab File: VX002145.D
 Acq: 30 May 2018 19:05

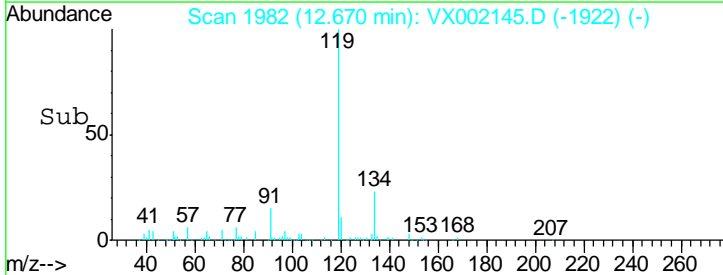
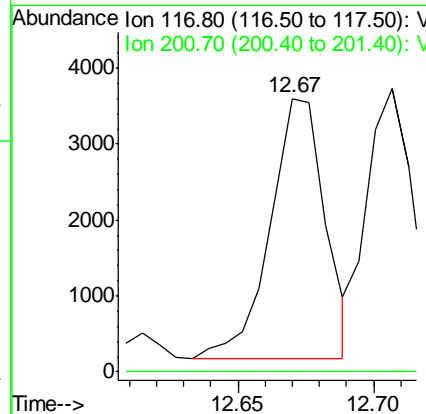
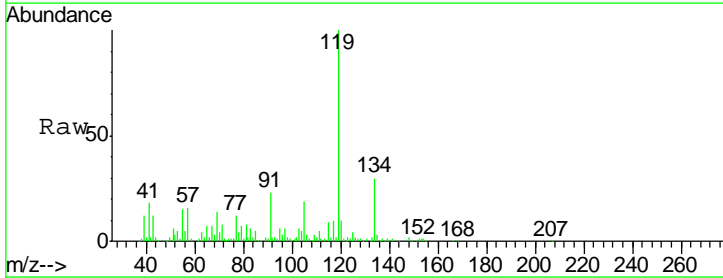
Instrument :
 MSVOA_X
 ClientSampled :
 MW-22

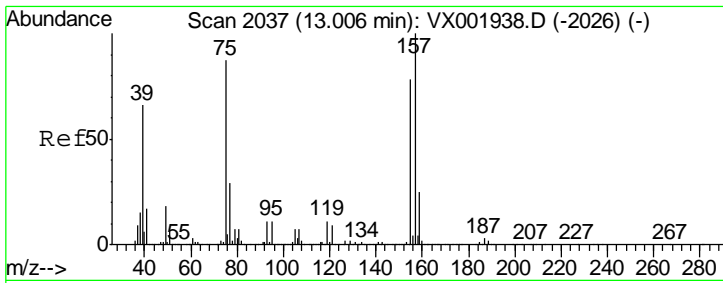
Tgt Ion	Resp	Lower	Upper
91	100		
92	32.7	26.3	78.9
134	81.7	13.6	40.7#



#90
 Hexachloroethane
 Concen: 1.40 ug/l
 RT: 12.67 min Scan# 1982
 Delta R.T. 0.07 min
 Lab File: VX002145.D
 Acq: 30 May 2018 19:05

Tgt Ion	Resp	Lower	Upper
117	100		
201	0.0	48.0	144.0#

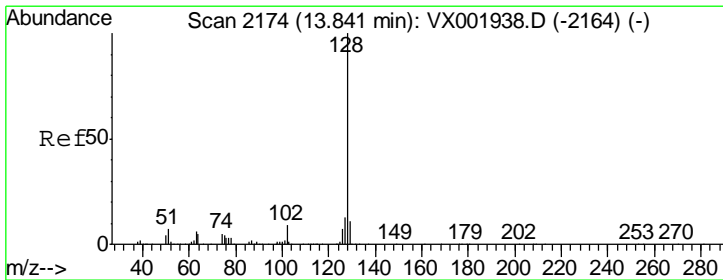
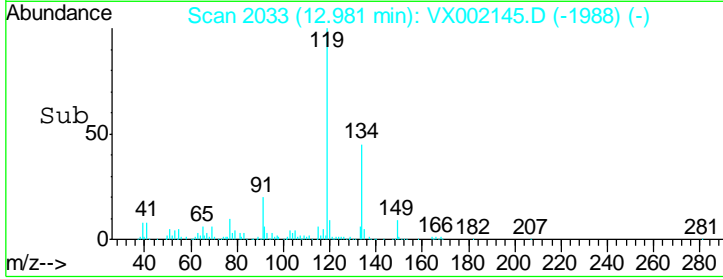
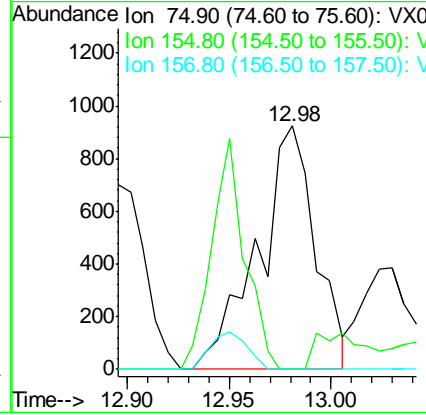
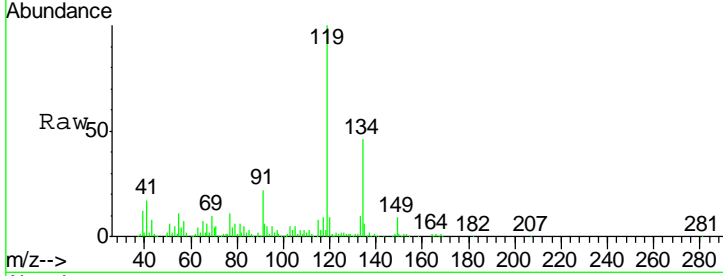




#92
 1,2-Dibromo-3-Chloropropane
 Concen: 1.06 ug/l
 RT: 12.98 min Scan# 2033
 Delta R.T. -0.02 min
 Lab File: VX002145.D
 Acq: 30 May 2018 19:05

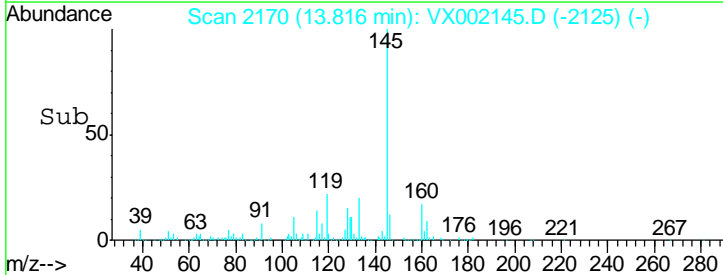
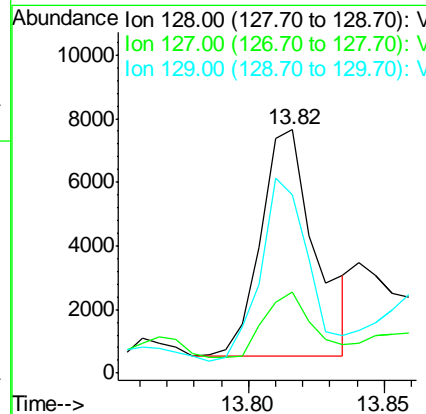
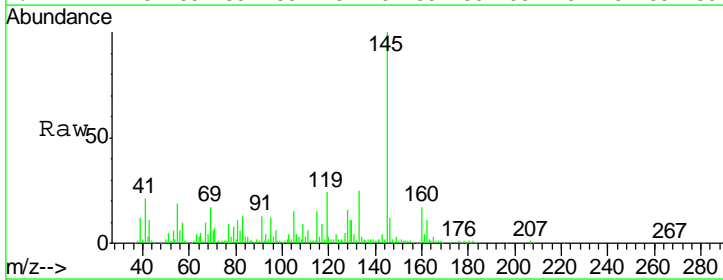
Instrument :
 MSVOA_X
 ClientSampled :
 MW-22

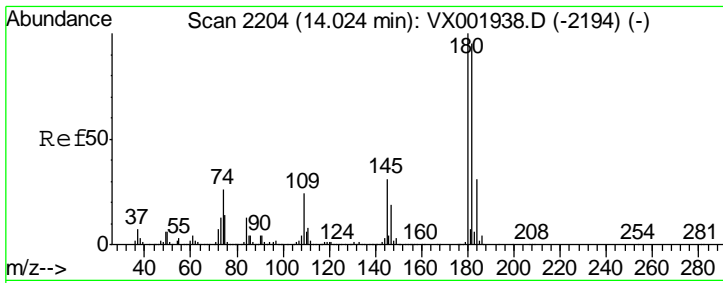
Tgt Ion: 75 Resp: 1800
 Ion Ratio Lower Upper
 75 100
 155 0.0 45.1 135.2#
 157 0.0 58.1 174.2#



#95
 Naphthalene
 Concen: 0.48 ug/l
 RT: 13.82 min Scan# 2170
 Delta R.T. -0.02 min
 Lab File: VX002145.D
 Acq: 30 May 2018 19:05

Tgt Ion: 128 Resp: 9917
 Ion Ratio Lower Upper
 128 100
 127 26.7 10.4 15.6#
 129 71.9 8.8 13.2#





#96
 1,2,3-Trichlorobenzene
 Concen: 0.22 ug/l
 RT: 14.04 min Scan# 2206
 Delta R.T. 0.01 min
 Lab File: VX002145.D
 Acq: 30 May 2018 19:05

Instrument : MSVOA_X
 ClientSampled : MW-22

Tgt Ion	Resp	Lower	Upper
180	1505		
180	100		
182	39.0	47.9	143.6#
145	2151.4	15.1	45.3#

