

Data Path : W:\HPCHEM1\MSVOA X\DATA\VX053118\  
 Data File : VX002203.D  
 Acq On : 01 Jun 2018 07:22  
 Operator : JC/MD  
 Sample : J3119-06  
 Misc : 5.0mL/MSVOA X/WATER  
 ALS Vial : 35 Sample Multiplier: 1

Instrument :  
 MSVOA\_X  
 ClientSampleId :  
 Z4TB03-180521

Quant Time: Jun 01 17:37:16 2018  
 Quant Method : W:\HPCHEM1\MSVOA\_X\METHOD\82X052418W.M  
 Quant Title : SW846 8260  
 QLast Update : Thu May 24 13:09:03 2018  
 Response via : Initial Calibration

Internal Standards	R.T.	QIon	Response	Conc	Units	Dev(Min)
1) Pentafluorobenzene	5.67	168	266813	50.00	ug/l	0.00
34) 1,4-Difluorobenzene	6.87	114	390205	50.00	ug/l	0.00
63) Chlorobenzene-d5	10.12	117	353597	50.00	ug/l	0.00
72) 1,4-Dichlorobenzene-d4	12.09	152	193667	50.00	ug/l	0.00

System Monitoring Compounds

33) 1,2-Dichloroethane-d4	6.07	65	228071	47.82	ug/l	0.00
Spiked Amount				50.000		
			Recovery	=	95.64%	
35) Dibromofluoromethane	5.51	113	167110	42.83	ug/l	0.00
Spiked Amount				50.000		
			Recovery	=	85.66%	
50) Toluene-d8	8.72	98	669871	47.42	ug/l	0.00
Spiked Amount				50.000		
			Recovery	=	94.84%	
62) 4-Bromofluorobenzene	11.14	95	235924	42.68	ug/l	0.00
Spiked Amount				50.000		
			Recovery	=	85.36%	

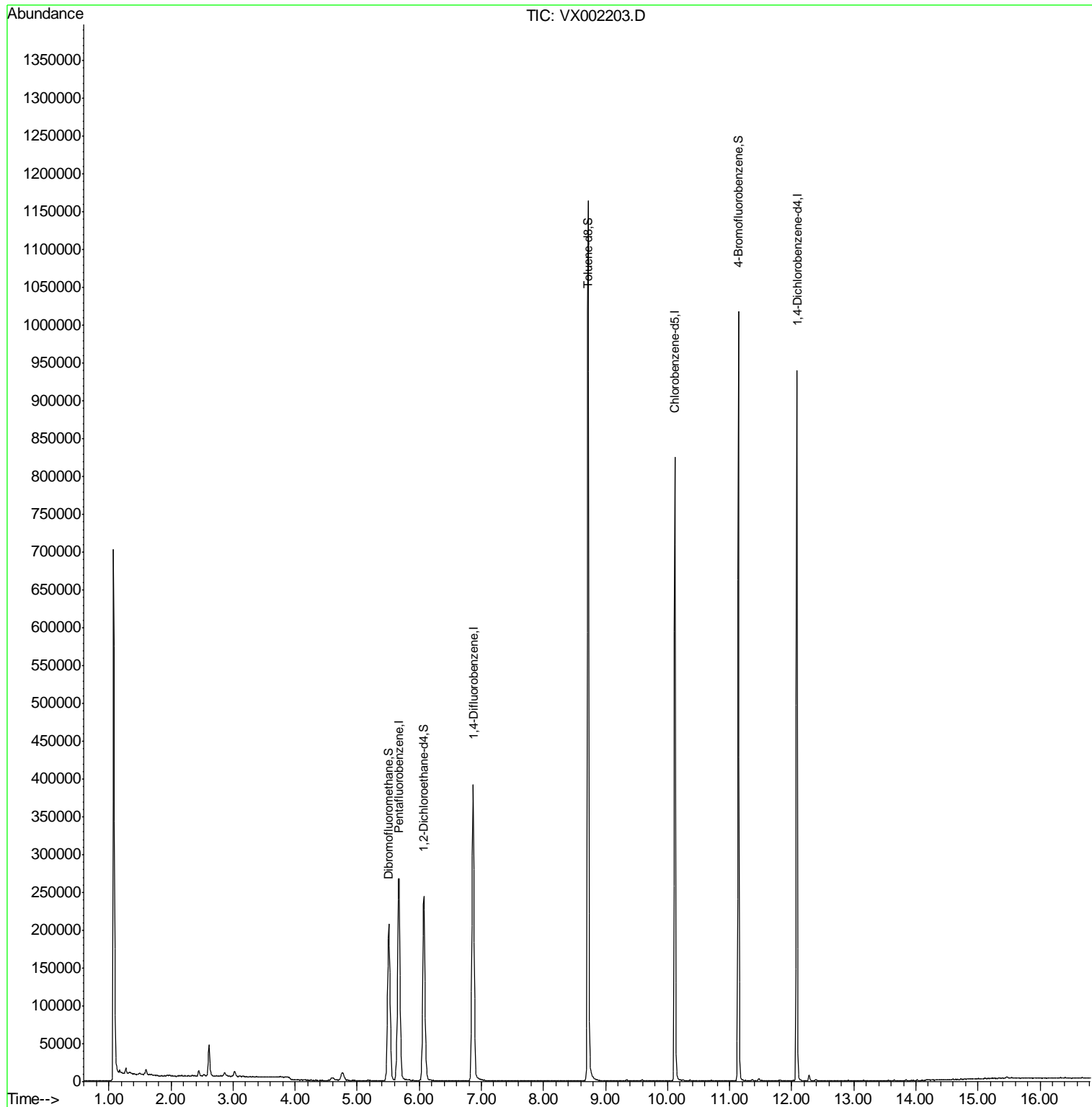
Target Compounds Qvalue

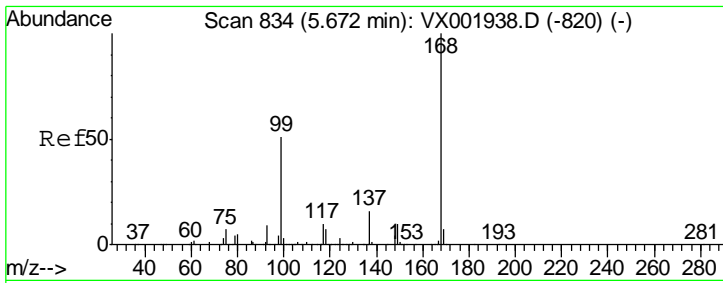
(#) = qualifier out of range (m) = manual integration (+) = signals summed

Data Path : W:\HPCHEM1\MSVOA X\DATA\VX053118\  
 Data File : VX002203.D  
 Acq On : 01 Jun 2018 07:22  
 Operator : JC/MD  
 Sample : J3119-06  
 Misc : 5.0mL/MSVOA X/WATER  
 ALS Vial : 35 Sample Multiplier: 1

Instrument :  
 MSVOA\_X  
 ClientSampleId :  
 Z4TB03-180521

Quant Time: Jun 01 17:37:16 2018  
 Quant Method : W:\HPCHEM1\MSVOA\_X\METHOD\82X052418W.M  
 Quant Title : SW846 8260  
 QLast Update : Thu May 24 13:09:03 2018  
 Response via : Initial Calibration

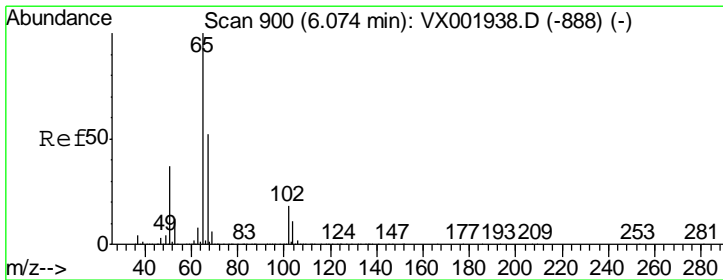
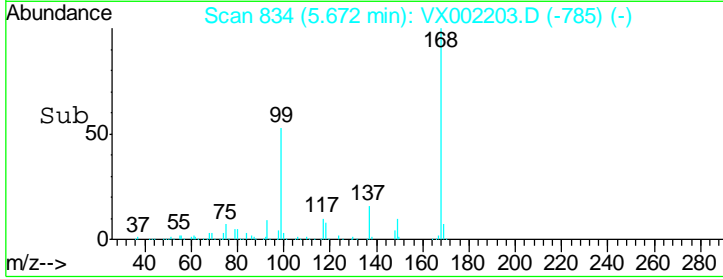
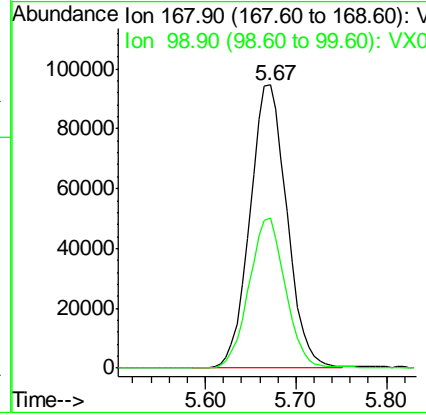
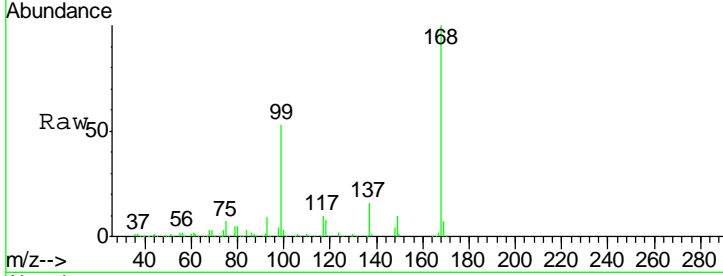




#1  
 Pentafluorobenzene  
 Concen: 50.000 ug/l  
 RT: 5.67 min Scan# 834  
 Delta R.T. -0.00 min  
 Lab File: VX002203.D  
 Acq: 01 Jun 2018 07:22

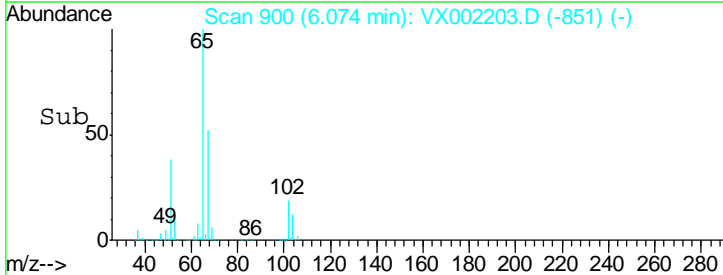
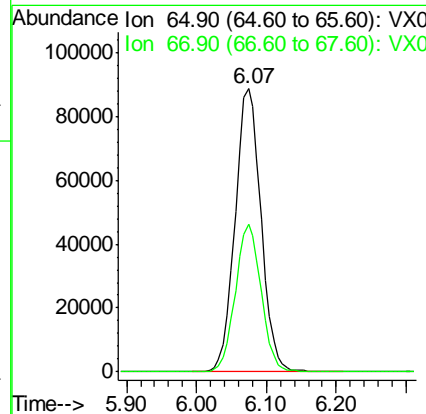
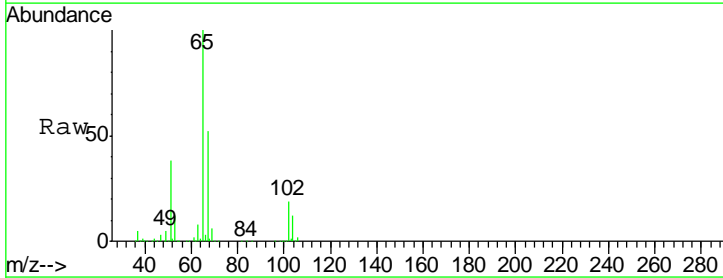
Instrument :  
 MSVOA\_X  
 ClientSampleId :  
 Z4TB03-180521

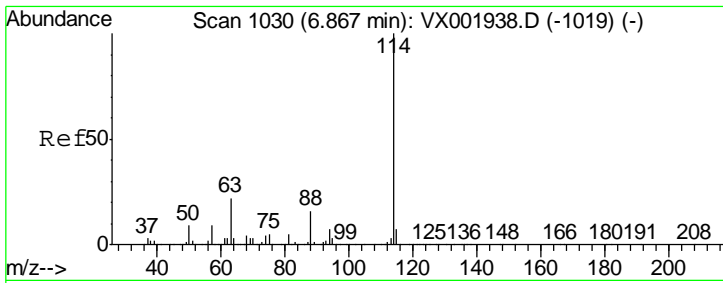
Tgt Ion: 168 Resp: 266813  
 Ion Ratio Lower Upper  
 168 100  
 99 53.0 41.0 61.4



#33  
 1,2-Dichloroethane-d4  
 Concen: 47.821 ug/l  
 RT: 6.07 min Scan# 900  
 Delta R.T. -0.00 min  
 Lab File: VX002203.D  
 Acq: 01 Jun 2018 07:22

Tgt Ion: 65 Resp: 228071  
 Ion Ratio Lower Upper  
 65 100  
 67 51.9 0.0 104.0

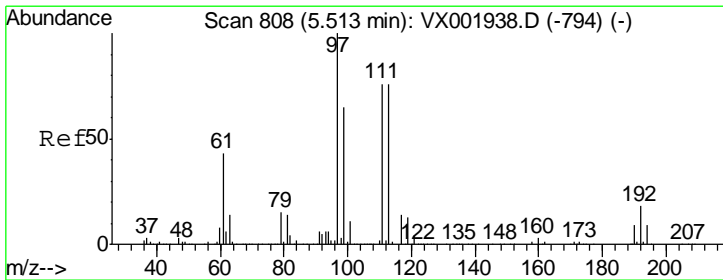
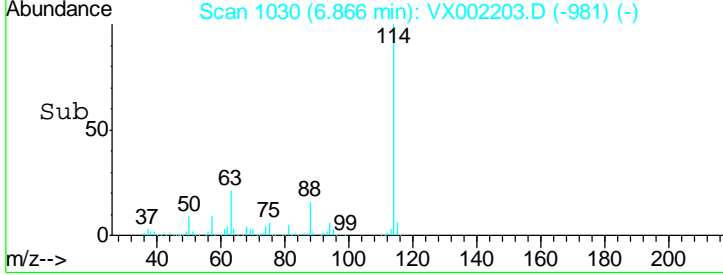
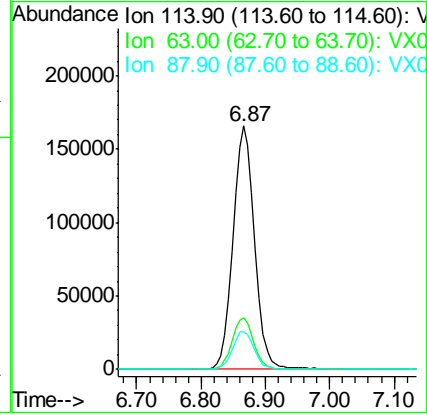
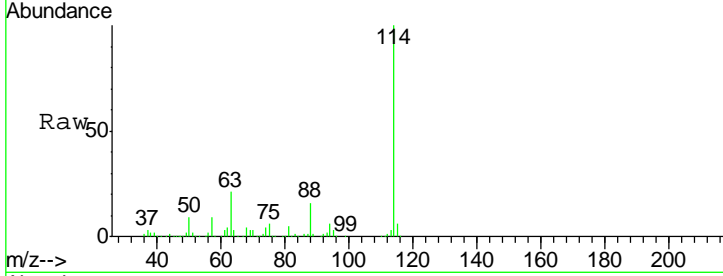




#34  
 1,4-Difluorobenzene  
 Concen: 50.000 ug/l  
 RT: 6.87 min Scan# 1030  
 Delta R.T. -0.00 min  
 Lab File: VX002203.D  
 Acq: 01 Jun 2018 07:22

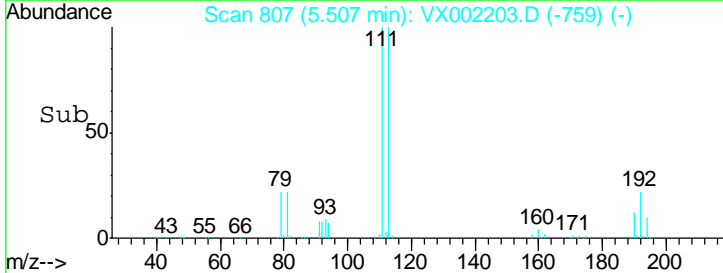
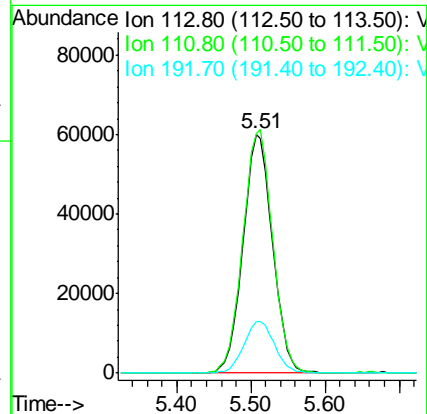
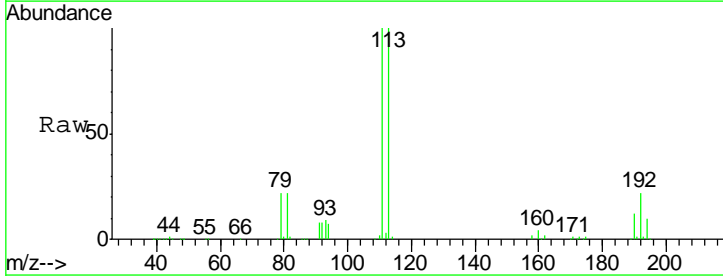
Instrument :  
 MSVOA\_X  
 ClientSampled :  
 Z4TB03-180521

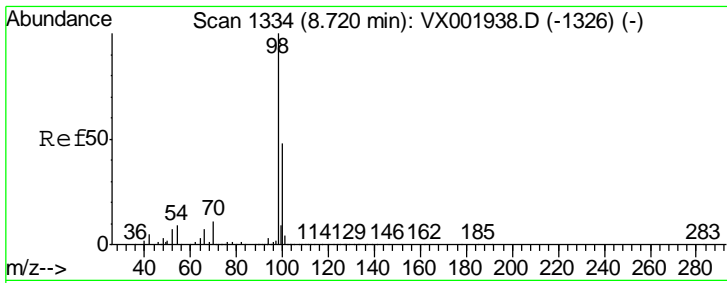
Tgt Ion	Resp	Lower	Upper
114	390205		
63	21.1	0.0	43.2
88	15.6	0.0	31.6



#35  
 Dibromofluoromethane  
 Concen: 42.826 ug/l  
 RT: 5.51 min Scan# 807  
 Delta R.T. -0.01 min  
 Lab File: VX002203.D  
 Acq: 01 Jun 2018 07:22

Tgt Ion	Resp	Lower	Upper
113	167110		
111	103.2	82.0	123.0
192	22.5	18.9	28.3

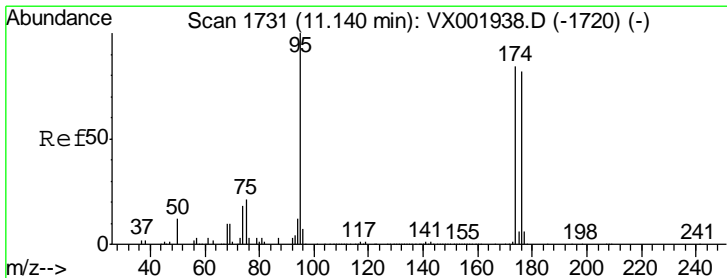
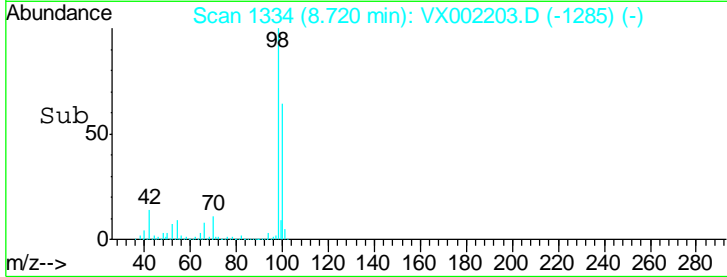
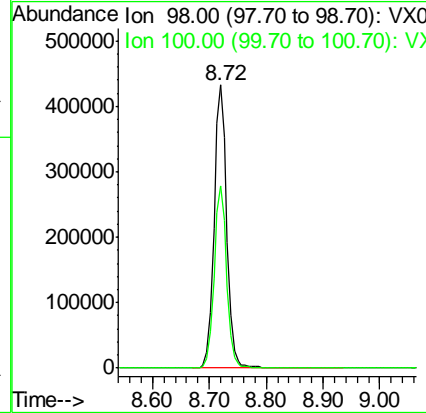
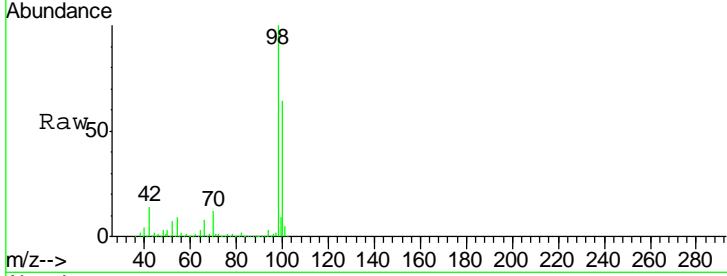




#50  
 Toluene-d8  
 Concen: 47.418 ug/l  
 RT: 8.72 min Scan# 1334  
 Delta R.T. 0.00 min  
 Lab File: VX002203.D  
 Acq: 01 Jun 2018 07:22

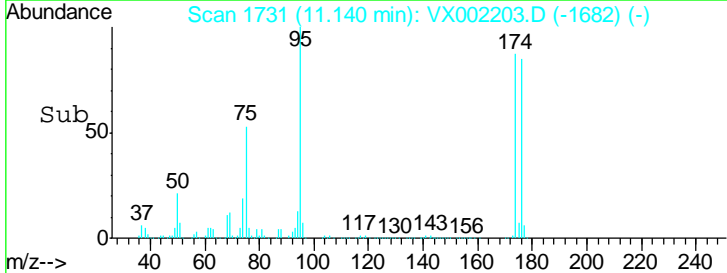
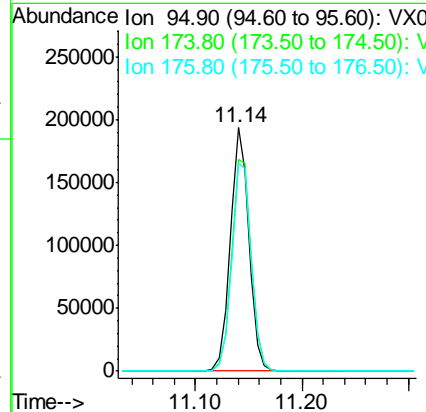
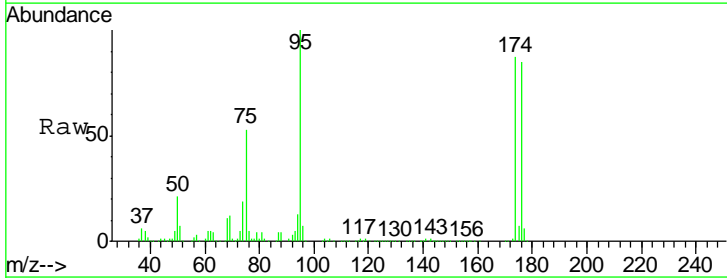
Instrument :  
 MSVOA\_X  
 ClientSampled :  
 Z4TB03-180521

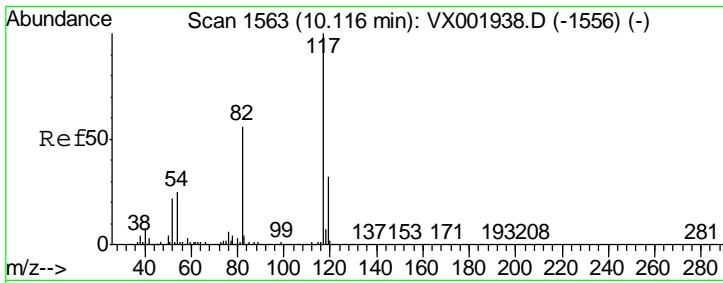
Tgt Ion: 98 Resp: 669871  
 Ion Ratio Lower Upper  
 98 100  
 100 63.7 51.5 77.3



#62  
 4-Bromofluorobenzene  
 Concen: 42.684 ug/l  
 RT: 11.14 min Scan# 1731  
 Delta R.T. 0.00 min  
 Lab File: VX002203.D  
 Acq: 01 Jun 2018 07:22

Tgt Ion: 95 Resp: 235924  
 Ion Ratio Lower Upper  
 95 100  
 174 92.3 0.0 178.8  
 176 89.8 0.0 175.6

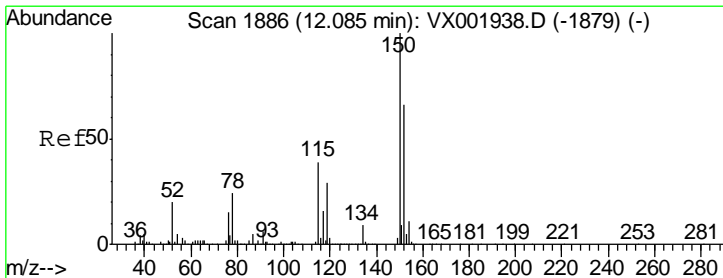
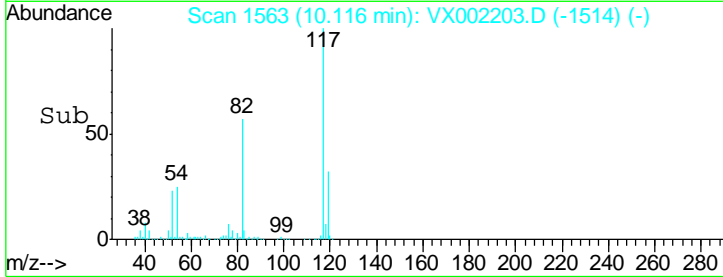
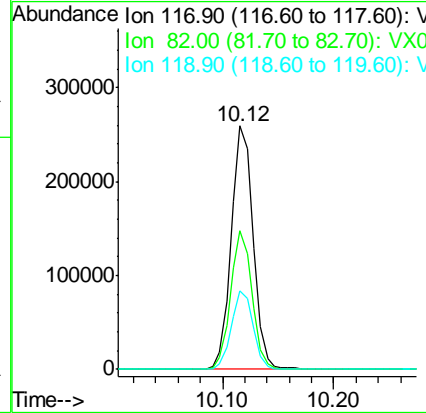
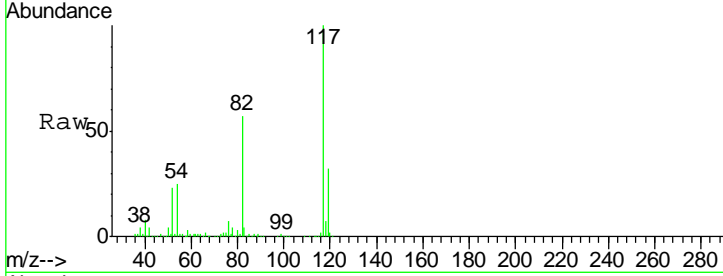




#63  
 Chlorobenzene-d5  
 Concen: 50.000 ug/l  
 RT: 10.12 min Scan# 1563  
 Delta R.T. -0.00 min  
 Lab File: VX002203.D  
 Acq: 01 Jun 2018 07:22

Instrument :  
 MSVOA\_X  
 ClientSampled :  
 Z4TB03-180521

Tgt Ion	Resp	Lower	Upper
117	353597		
82	57.2	44.8	67.2
119	32.0	25.5	38.3



#72  
 1,4-Dichlorobenzene-d4  
 Concen: 50.000 ug/l  
 RT: 12.09 min Scan# 1886  
 Delta R.T. -0.00 min  
 Lab File: VX002203.D  
 Acq: 01 Jun 2018 07:22

Tgt Ion	Resp	Lower	Upper
152	193667		
115	55.9	42.3	126.8
150	158.8	0.0	351.0

