

Data Path : W:\HPCHEM1\MSVOA_X\DATA\VX060118\
 Data File : VX002226.D
 Acq On : 01 Jun 2018 21:43
 Operator : JC/MD
 Sample : J3151-04
 Misc : 5.0mL/MSVOA_X/WATER
 ALS Vial : 13 Sample Multiplier: 1

Instrument :
 MSVOA_X
ClientSampleId :
 SS052MW274-180523

Quant Time: Jun 02 04:22:44 2018
 Quant Method : W:\HPCHEM1\MSVOA_X\METHOD\82X052418W.M
 Quant Title : SW846 8260
 QLast Update : Thu May 24 13:09:03 2018
 Response via : Initial Calibration

| Internal Standards | R.T. | QIon | Response | Conc | Units | Dev(Min) |
|----------------------------|-------|------|----------|-------|-------|----------|
| 1) Pentafluorobenzene | 5.67 | 168 | 218206 | 50.00 | ug/l | 0.00 |
| 34) 1,4-Difluorobenzene | 6.87 | 114 | 317705 | 50.00 | ug/l | 0.00 |
| 63) Chlorobenzene-d5 | 10.12 | 117 | 284923 | 50.00 | ug/l | 0.00 |
| 72) 1,4-Dichlorobenzene-d4 | 12.09 | 152 | 154923 | 50.00 | ug/l | 0.00 |

System Monitoring Compounds

| | | | | | | |
|---------------------------|--------|-----|----------|-----------|------|------|
| 33) 1,2-Dichloroethane-d4 | 6.07 | 65 | 204495 | 52.43 | ug/l | 0.00 |
| Spiked Amount | 50.000 | | Recovery | = 104.86% | | |
| 35) Dibromofluoromethane | 5.51 | 113 | 147984 | 46.58 | ug/l | 0.00 |
| Spiked Amount | 50.000 | | Recovery | = 93.16% | | |
| 50) Toluene-d8 | 8.72 | 98 | 586085 | 50.95 | ug/l | 0.00 |
| Spiked Amount | 50.000 | | Recovery | = 101.90% | | |
| 62) 4-Bromofluorobenzene | 11.14 | 95 | 199245 | 44.27 | ug/l | 0.00 |
| Spiked Amount | 50.000 | | Recovery | = 88.54% | | |

Target Compounds

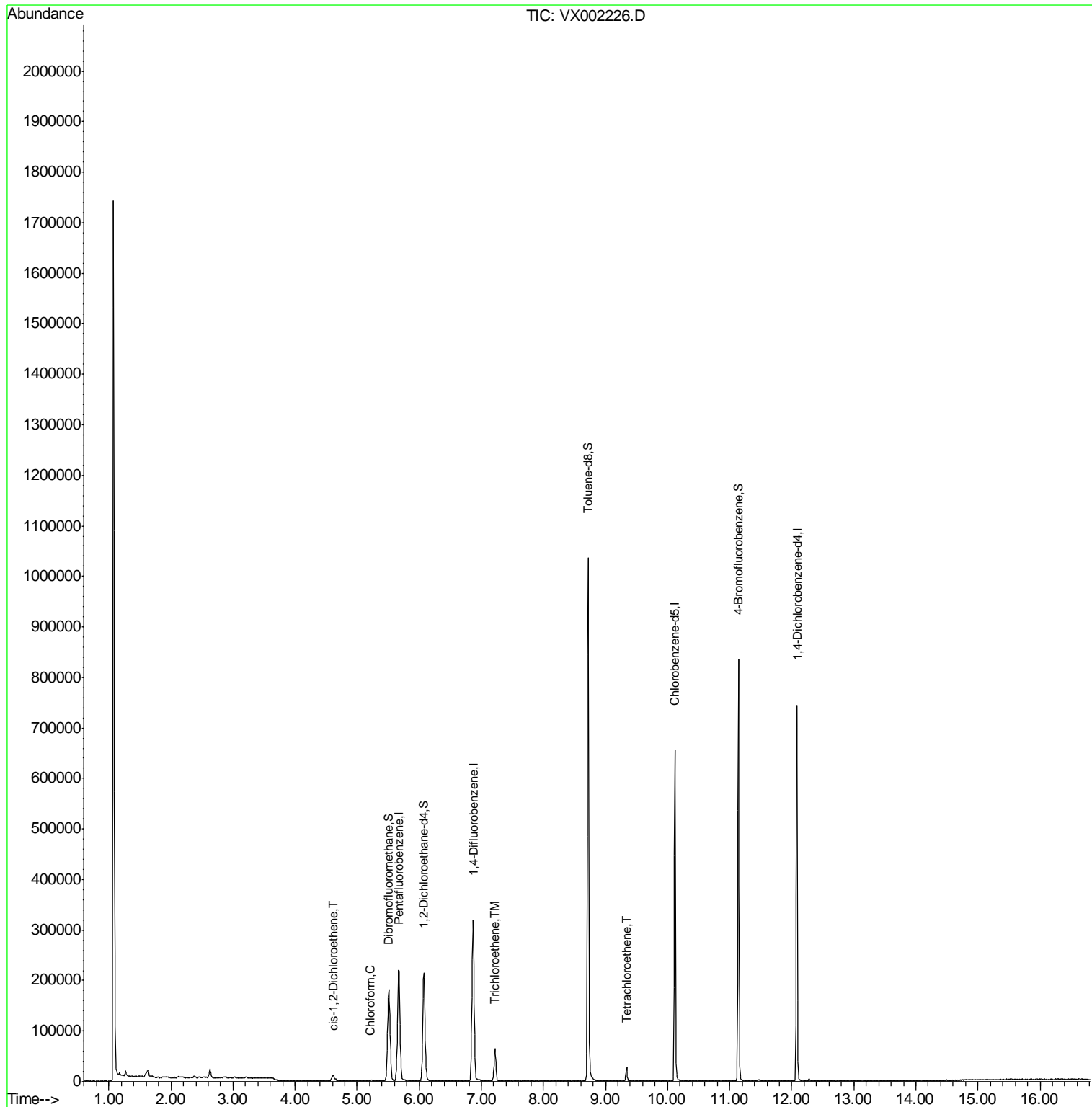
| | | | | | | Qvalue |
|----------------------------|------|-----|-------|-------|--------|--------|
| 27) cis-1,2-Dichloroethene | 4.61 | 96 | 4242 | 1.279 | ug/l # | 1 |
| 30) Chloroform | 5.22 | 83 | 1605 | 0.276 | ug/l | 92 |
| 44) Trichloroethene | 7.22 | 130 | 23457 | 6.217 | ug/l | 98 |
| 64) Tetrachloroethene | 9.34 | 164 | 5199 | 1.273 | ug/l | 95 |

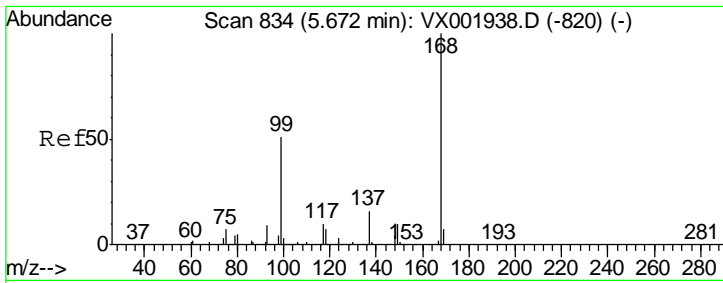
(#) = qualifier out of range (m) = manual integration (+) = signals summed

Data Path : W:\HPCHEM1\MSVOA_X\DATA\VX060118\
 Data File : VX002226.D
 Acq On : 01 Jun 2018 21:43
 Operator : JC/MD
 Sample : J3151-04
 Misc : 5.0mL/MSVOA_X/WATER
 ALS Vial : 13 Sample Multiplier: 1

Instrument :
 MSVOA_X
ClientSampleId :
 SS052MW274-180523

Quant Time: Jun 02 04:22:44 2018
 Quant Method : W:\HPCHEM1\MSVOA_X\METHOD\82X052418W.M
 Quant Title : SW846 8260
 QLast Update : Thu May 24 13:09:03 2018
 Response via : Initial Calibration

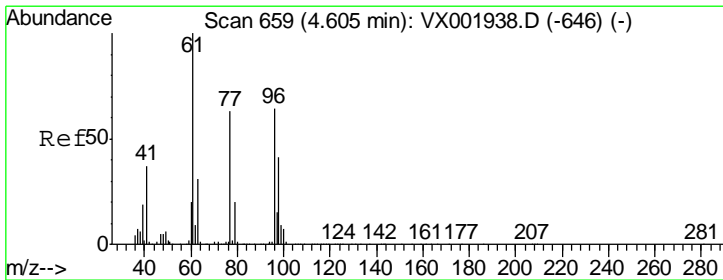
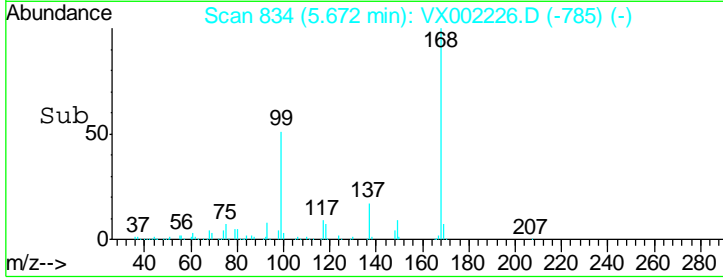
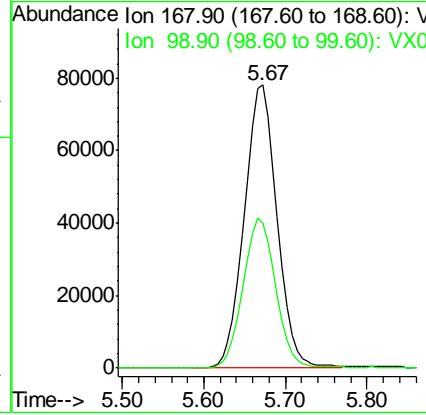
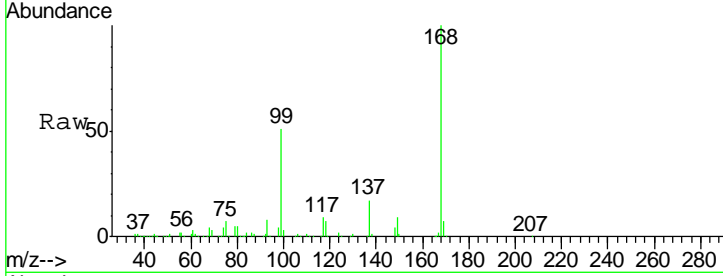




#1
 Pentafluorobenzene
 Concen: 50.000 ug/l
 RT: 5.67 min Scan# 834
 Delta R.T. 0.00 min
 Lab File: VX002226.D
 Acq: 01 Jun 2018 21:43

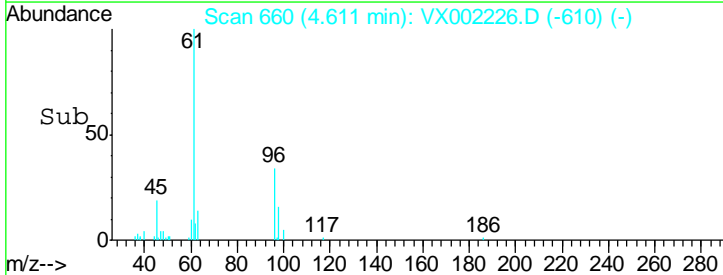
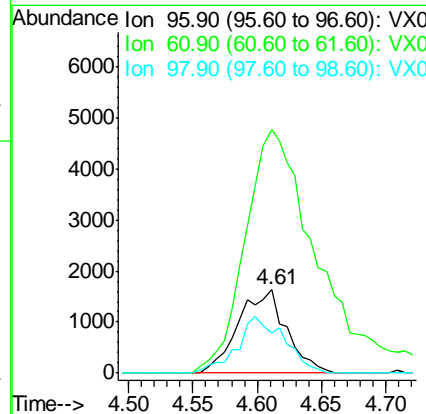
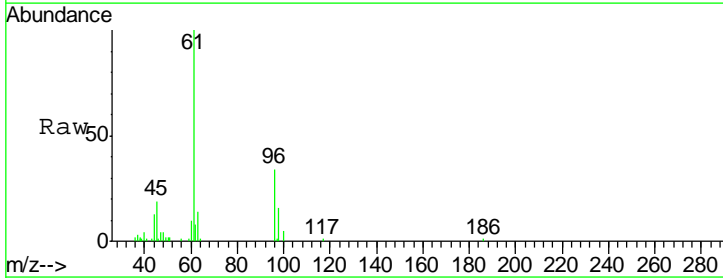
Instrument :
 MSVOA_X
 ClientSampleId :
 SS052MW274-180523

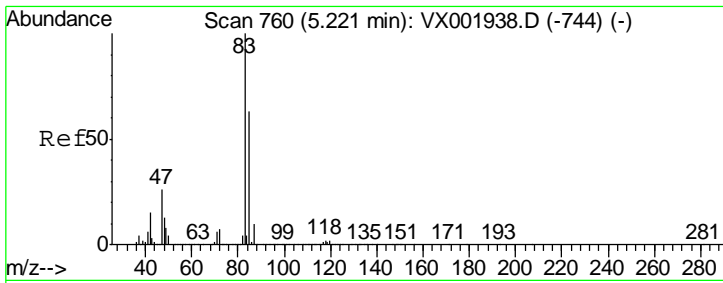
Tgt Ion: 168 Resp: 218206
 Ion Ratio Lower Upper
 168 100
 99 51.2 41.0 61.4



#27
 cis-1,2-Dichloroethene
 Concen: 1.279 ug/l
 RT: 4.61 min Scan# 660
 Delta R.T. 0.01 min
 Lab File: VX002226.D
 Acq: 01 Jun 2018 21:43

Tgt Ion: 96 Resp: 4242
 Ion Ratio Lower Upper
 96 100
 61 440.4 0.0 348.4#
 98 67.2 0.0 128.6

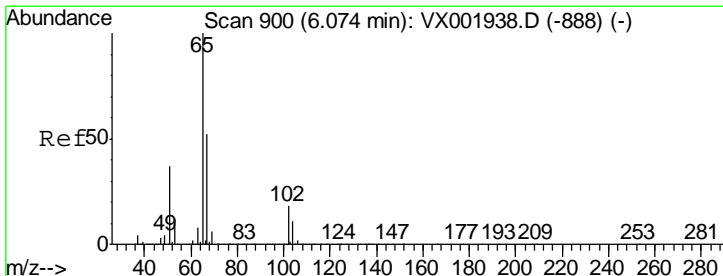
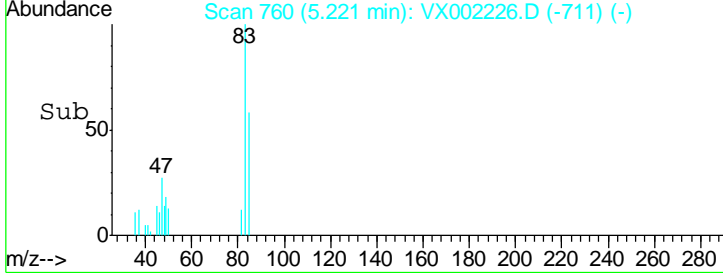
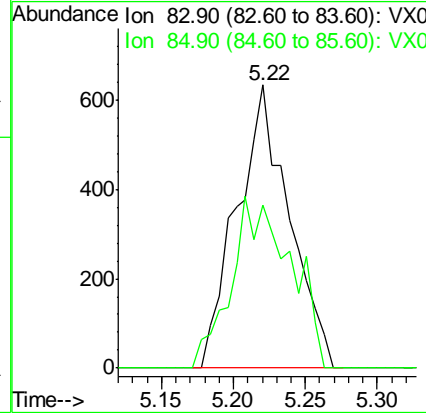
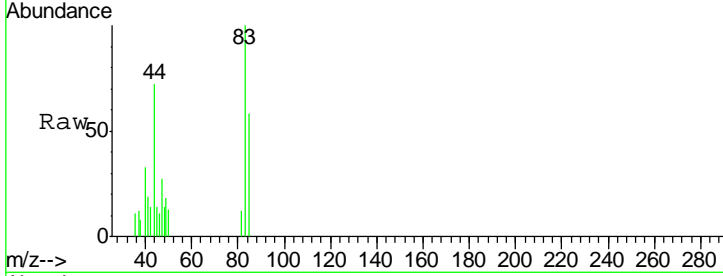




#30
 Chloroform
 Concen: 0.276 ug/l
 RT: 5.22 min Scan# 760
 Delta R.T. 0.00 min
 Lab File: VX002226.D
 Acq: 01 Jun 2018 21:43

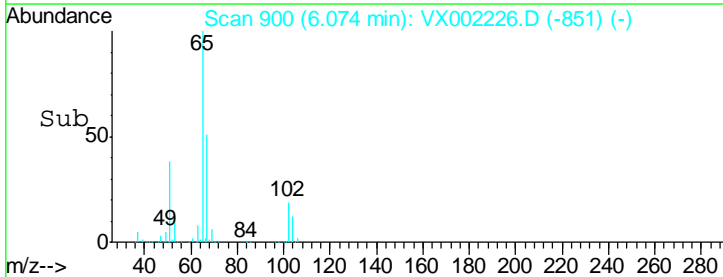
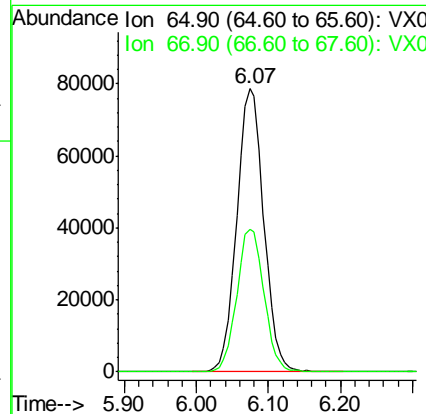
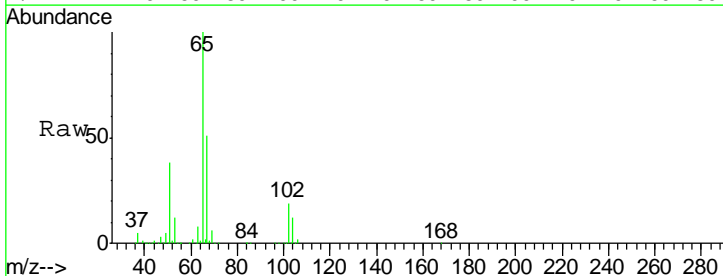
Instrument :
 MSVOA_X
ClientSampled :
 SS052MW274-180523

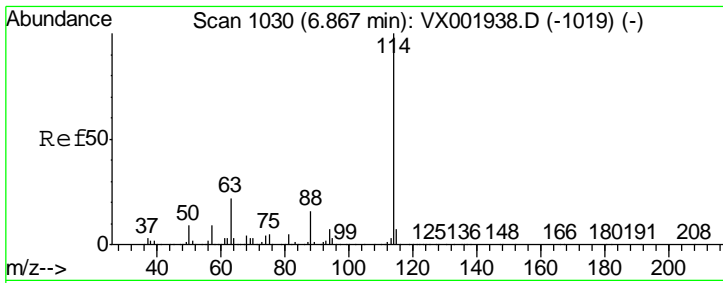
Tgt Ion: 83 Resp: 1605
 Ion Ratio Lower Upper
 83 100
 85 57.5 50.9 76.3



#33
 1,2-Dichloroethane-d4
 Concen: 52.429 ug/l
 RT: 6.07 min Scan# 900
 Delta R.T. 0.00 min
 Lab File: VX002226.D
 Acq: 01 Jun 2018 21:43

Tgt Ion: 65 Resp: 204495
 Ion Ratio Lower Upper
 65 100
 67 50.9 0.0 104.0

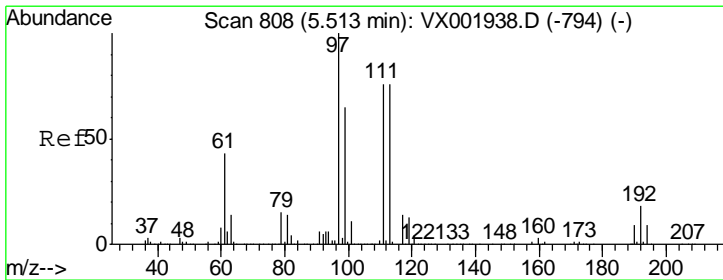
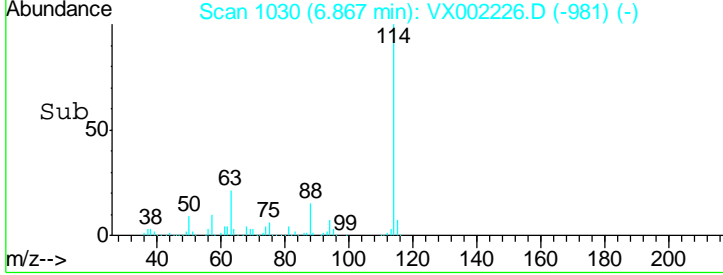
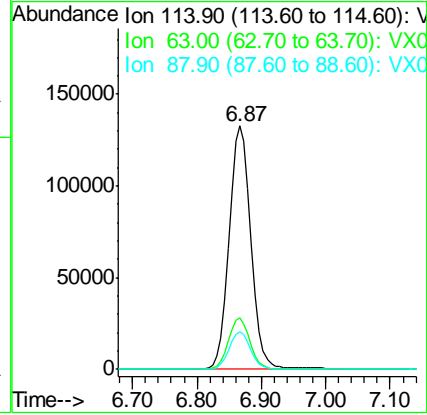
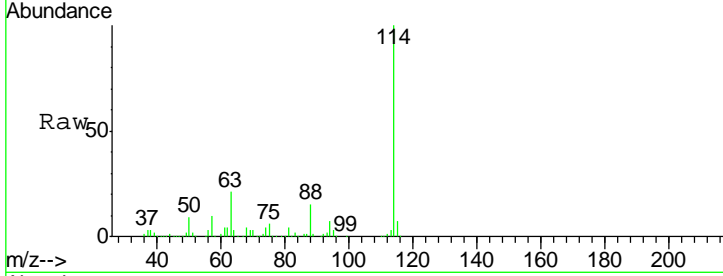




#34
 1,4-Difluorobenzene
 Concen: 50.000 ug/l
 RT: 6.87 min Scan# 1030
 Delta R.T. 0.00 min
 Lab File: VX002226.D
 Acq: 01 Jun 2018 21:43

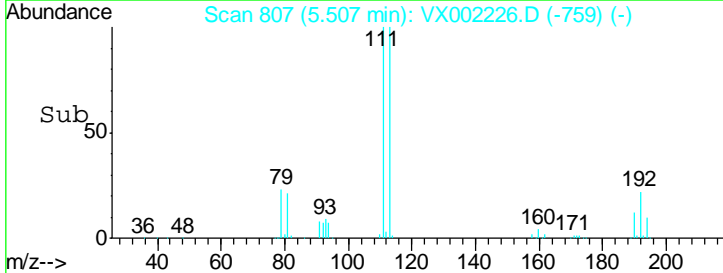
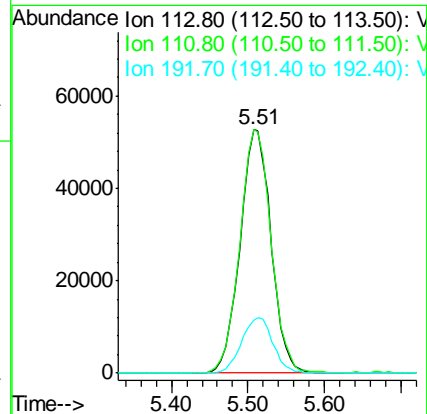
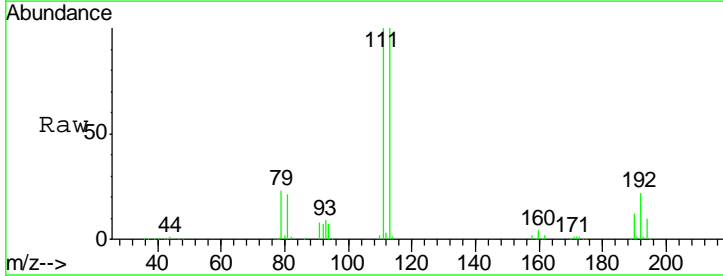
Instrument :
 MSVOA_X
 ClientSampled :
 SS052MW274-180523

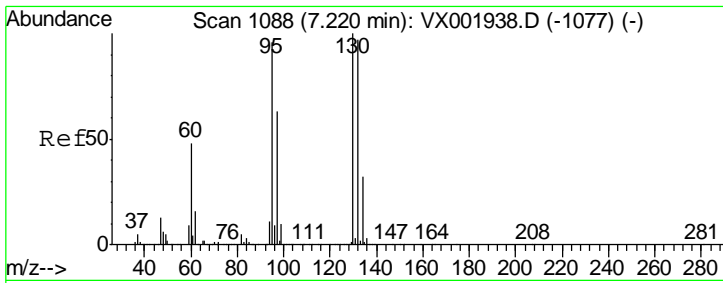
| Tgt Ion | Resp | Lower | Upper |
|---------|--------|-------|-------|
| 114 | 317705 | | |
| 63 | 21.1 | 0.0 | 43.2 |
| 88 | 15.2 | 0.0 | 31.6 |



#35
 Dibromofluoromethane
 Concen: 46.579 ug/l
 RT: 5.51 min Scan# 807
 Delta R.T. -0.01 min
 Lab File: VX002226.D
 Acq: 01 Jun 2018 21:43

| Tgt Ion | Resp | Lower | Upper |
|---------|--------|-------|-------|
| 113 | 147984 | | |
| 111 | 101.0 | 82.0 | 123.0 |
| 192 | 22.9 | 18.9 | 28.3 |

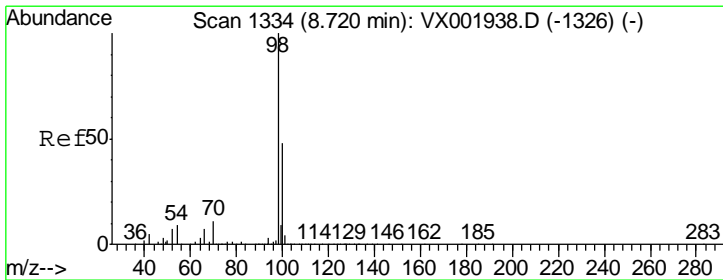
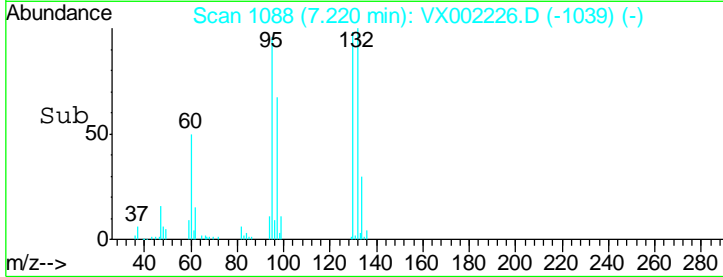
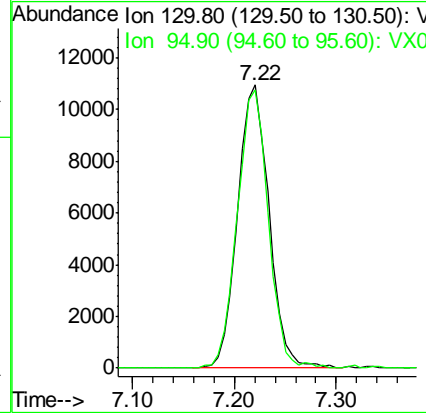
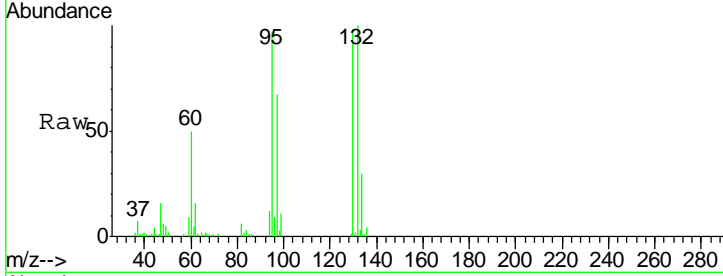




#44
 Trichloroethene
 Concen: 6.217 ug/l
 RT: 7.22 min Scan# 1088
 Delta R.T. 0.00 min
 Lab File: VX002226.D
 Acq: 01 Jun 2018 21:43

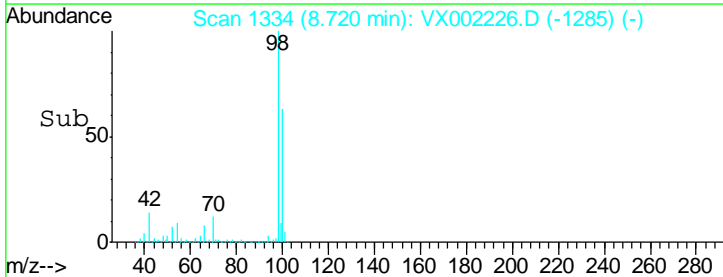
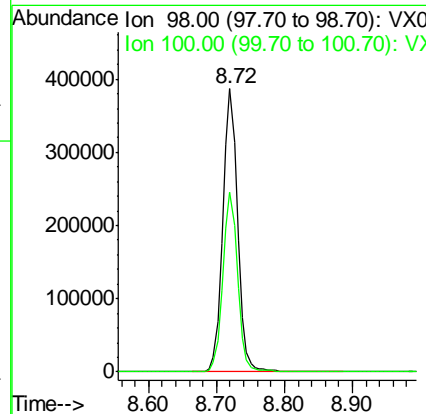
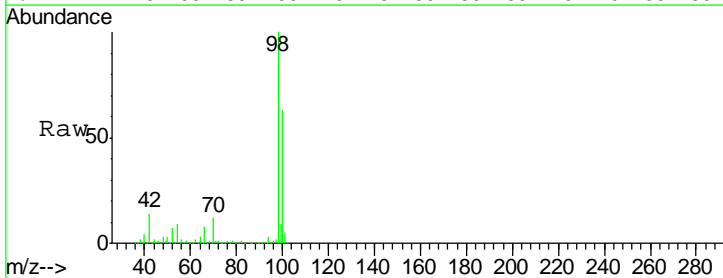
Instrument :
 MSVOA_X
 ClientSampled :
 SS052MW274-180523

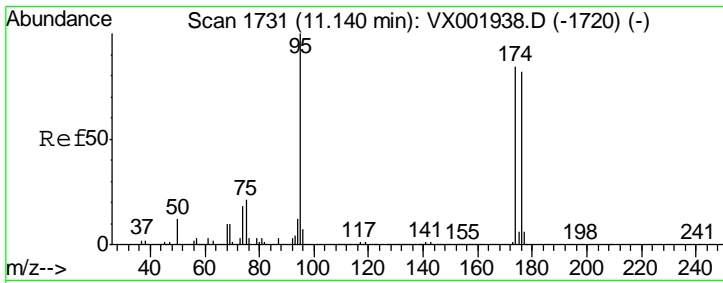
Tgt Ion: 130 Resp: 23457
 Ion Ratio Lower Upper
 130 100
 95 98.4 0.0 192.0



#50
 Toluene-d8
 Concen: 50.955 ug/l
 RT: 8.72 min Scan# 1334
 Delta R.T. 0.00 min
 Lab File: VX002226.D
 Acq: 01 Jun 2018 21:43

Tgt Ion: 98 Resp: 586085
 Ion Ratio Lower Upper
 98 100
 100 63.3 51.5 77.3

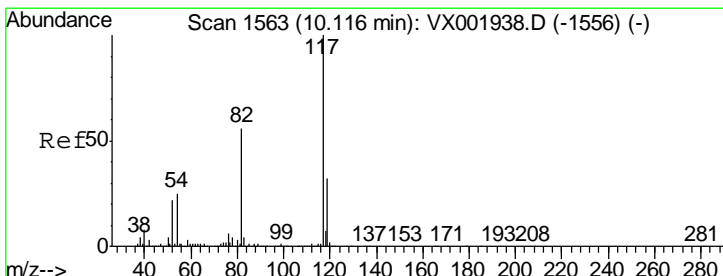
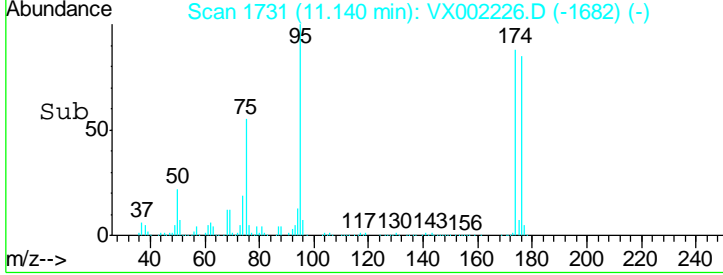
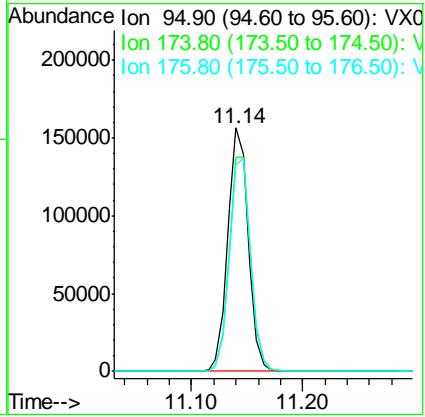
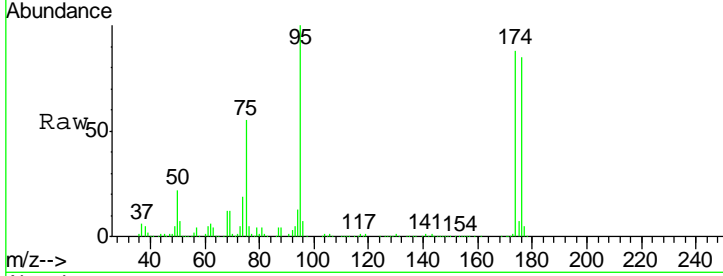




#62
 4-Bromofluorobenzene
 Concen: 44.274 ug/l
 RT: 11.14 min Scan# 1731
 Delta R.T. 0.00 min
 Lab File: VX002226.D
 Acq: 01 Jun 2018 21:43

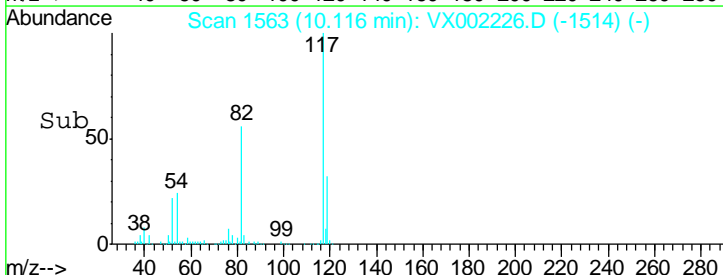
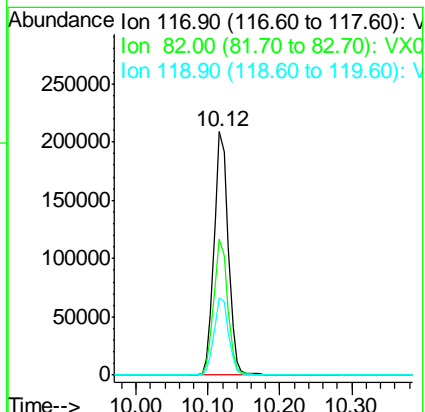
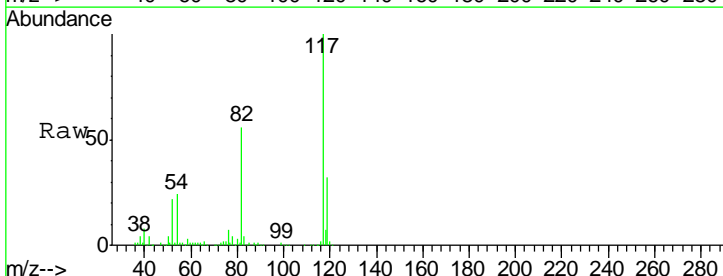
Instrument : MSVOA_X
 ClientSampled : SS052MW274-180523

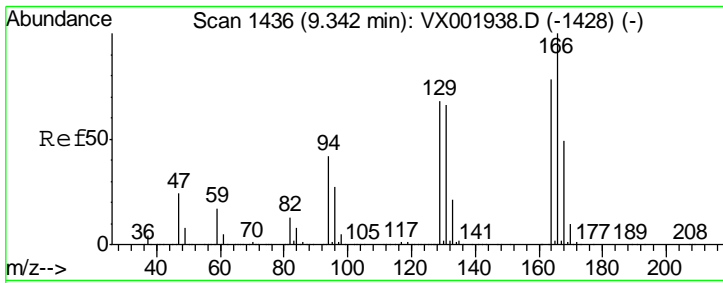
| Tgt Ion | Resp | Lower | Upper |
|---------|--------|-------|-------|
| 95 | 199245 | | |
| 174 | 91.8 | 0.0 | 178.8 |
| 176 | 89.9 | 0.0 | 175.6 |



#63
 Chlorobenzene-d5
 Concen: 50.000 ug/l
 RT: 10.12 min Scan# 1563
 Delta R.T. 0.00 min
 Lab File: VX002226.D
 Acq: 01 Jun 2018 21:43

| Tgt Ion | Resp | Lower | Upper |
|---------|--------|-------|-------|
| 117 | 284923 | | |
| 82 | 55.7 | 44.8 | 67.2 |
| 119 | 31.8 | 25.5 | 38.3 |

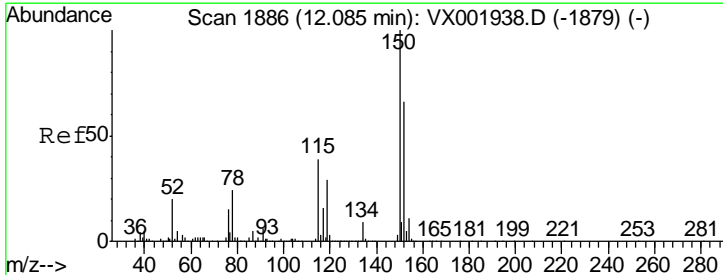
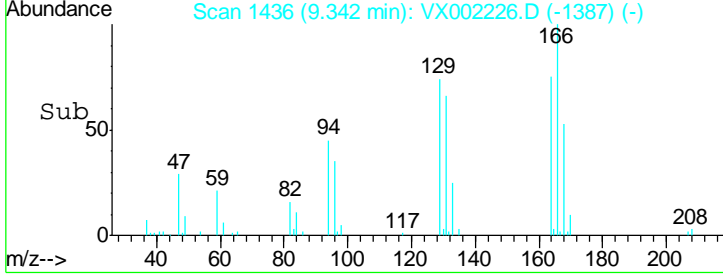
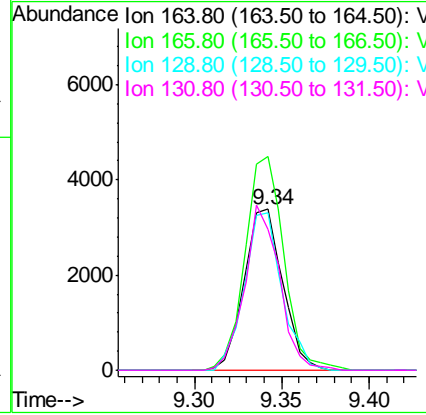
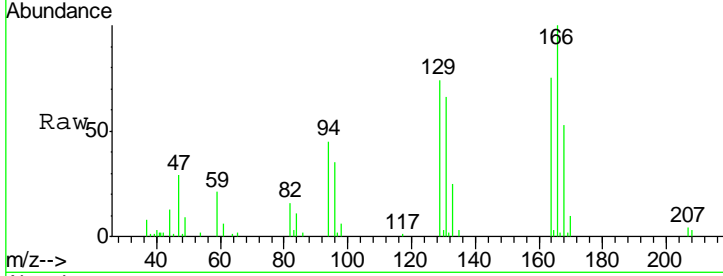




#64
 Tetrachloroethene
 Concen: 1.273 ug/l
 RT: 9.34 min Scan# 1436
 Delta R.T. 0.00 min
 Lab File: VX002226.D
 Acq: 01 Jun 2018 21:43

Instrument :
 MSVOA_X
 ClientSampled :
 SS052MW274-180523

| Tgt Ion | Resp | Lower | Upper |
|---------|-------|-------|-------|
| 164 | 100 | | |
| 166 | 132.8 | 102.7 | 154.1 |
| 129 | 97.7 | 70.3 | 105.5 |
| 131 | 87.5 | 68.2 | 102.4 |



#72
 1,4-Dichlorobenzene-d4
 Concen: 50.000 ug/l
 RT: 12.09 min Scan# 1886
 Delta R.T. 0.00 min
 Lab File: VX002226.D
 Acq: 01 Jun 2018 21:43

| Tgt Ion | Resp | Lower | Upper |
|---------|-------|-------|-------|
| 152 | 100 | | |
| 115 | 55.1 | 42.3 | 126.8 |
| 150 | 154.7 | 0.0 | 351.0 |

