

Data Path : Z:\voasrv\HPCHEM1\MSVOA_X\Data\VX060421\
 Data File : VX022434.D
 Acq On : 05 Jun 2021 00:04
 Operator : JC/MD
 Sample : PB136806ZHE#01
 Misc : 5.0mL/MSVOA_X/WATER
 ALS Vial : 29 Sample Multiplier: 1

Instrument :
 MSVOA_X
 ClientSampleId :

Quant Time: Jun 05 06:19:56 2021
 Quant Method : Z:\voasrv\HPCHEM1\MSVOA_X\Method\82X051921W.M
 Quant Title : SW846 8260
 QLast Update : Wed May 19 14:23:10 2021
 Response via : Initial Calibration

Compound	R.T.	QIon	Response	Conc	Units	Dev(Min)

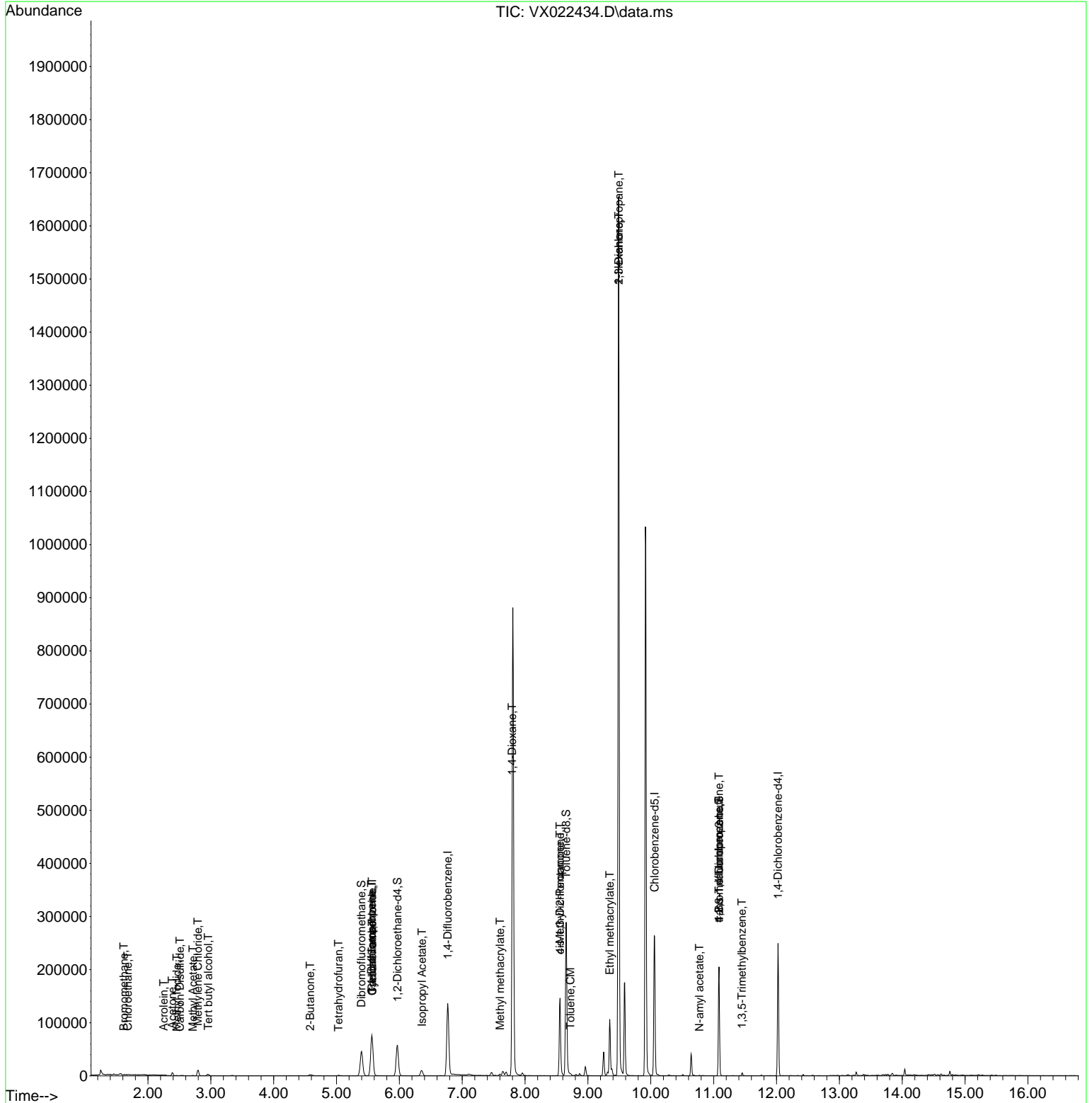
Internal Standards						
1) Pentafluorobenzene	5.562	168	64972	50.000	ug/l	0.00
34) 1,4-Difluorobenzene	6.769	114	131223	50.000	ug/l	0.00
63) Chlorobenzene-d5	10.061	117	116912	50.000	ug/l	0.00
72) 1,4-Dichlorobenzene-d4	12.024	152	44785	50.000	ug/l	0.00
System Monitoring Compounds						
33) 1,2-Dichloroethane-d4	5.970	65	52071	51.955	ug/l	0.00
Spiked Amount	50.000	Range 78 - 117	Recovery	=	103.900%	
35) Dibromofluoromethane	5.397	113	39369	47.310	ug/l	0.00
Spiked Amount	50.000	Range 75 - 124	Recovery	=	94.620%	
50) Toluene-d8	8.653	98	163960	51.149	ug/l	0.00
Spiked Amount	50.000	Range 92 - 112	Recovery	=	102.300%	
62) 4-Bromofluorobenzene	11.085	95	56580	47.754	ug/l	0.00
Spiked Amount	50.000	Range 83 - 123	Recovery	=	95.500%	
Target Compounds						
						Qvalue
5) Bromomethane	1.617	94	223	0.424	ug/l #	13
6) Chloroethane	1.678	64	294	0.548	ug/l #	43
10) Methyl Iodide	2.459	142	330	0.399	ug/l #	85
11) Tert butyl alcohol	2.958	59	1843	8.040	ug/l #	73
13) Acrolein	2.251	56	46	0.303	ug/l #	83
16) Acetone	2.385	43	5895	13.508	ug/l	96
17) Carbon Disulfide	2.507	76	429	0.220	ug/l #	75
18) Methyl Acetate	2.715	43	782	0.674	ug/l #	87
20) Methylene Chloride	2.794	84	4747	4.899	ug/l	90
25) 2-Butanone	4.580	43	2293	3.248	ug/l #	86
29) Tetrahydrofuran	5.031	42	733	1.744	ug/l #	70
31) Cyclohexane	5.568	56	1934	1.536	ug/l #	34
36) 1,1-Dichloropropene	5.556	75	6052	4.988	ug/l #	48
38) Carbon Tetrachloride	5.568	117	7366	6.206	ug/l #	17
43) Isopropyl Acetate	6.360	43	14277	5.868	ug/l #	93
48) Methyl methacrylate	7.604	41	4005	3.572	ug/l #	10
49) 1,4-Dioxane	7.793	88	66	3.023	ug/l #	24
51) 4-Methyl-2-Pentanone	8.555	43	52063	35.723	ug/l #	45
52) Toluene	8.720	92	799	0.338	ug/l	98
54) cis-1,3-Dichloropropene	8.555	75	24326	15.161	ug/l #	65
56) Ethyl methacrylate	9.348	69	432	0.278	ug/l #	1
57) 1,3-Dichloropropane	9.488	76	14400	8.787	ug/l #	42
59) 2-Hexanone	9.488	43	191566	174.769	ug/l #	44
74) N-amyl acetate	10.774	43	571	0.317	ug/l #	38
76) 1,2,3-Trichloropropane	11.085	75	30226	27.357	ug/l #	39
80) 1,3,5-Trimethylbenzene	11.451	105	2197	0.699	ug/l	87
81) trans-1,4-Dichloro-2-b...	11.085	75	30226	64.820	ug/l #	12

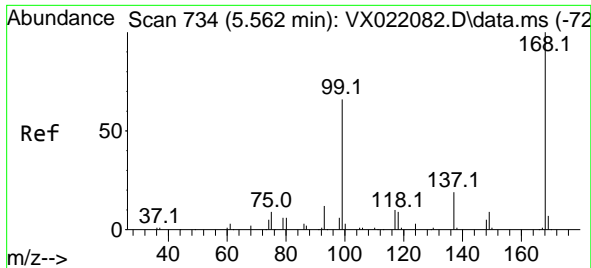
(#) = qualifier out of range (m) = manual integration (+) = signals summed

Data Path : Z:\voasrv\HPCHEM1\MSVOA_X\Data\VX060421\
Data File : VX022434.D
Acq On : 05 Jun 2021 00:04
Operator : JC/MD
Sample : PB136806ZHE#01
Misc : 5.0mL/MSVOA_X/WATER
ALS Vial : 29 Sample Multiplier: 1

Instrument :
MSVOA_X
ClientSampled :

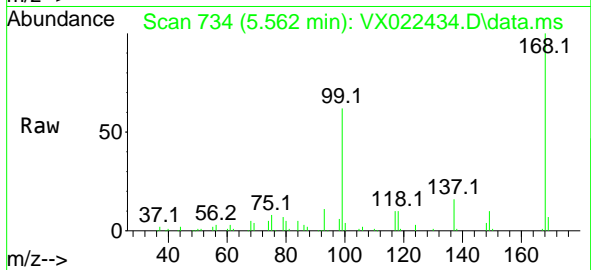
Quant Time: Jun 05 06:19:56 2021
Quant Method : Z:\voasrv\HPCHEM1\MSVOA_X\Method\82X051921W.M
Quant Title : SW846 8260
QLast Update : Wed May 19 14:23:10 2021
Response via : Initial Calibration



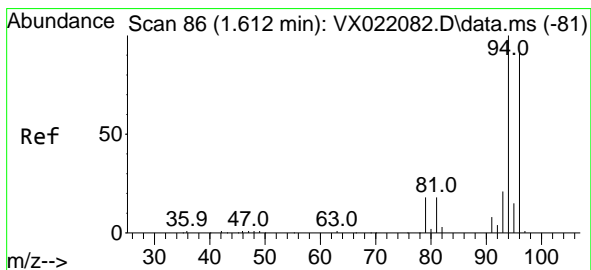
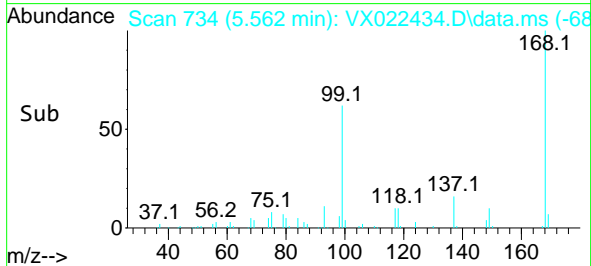
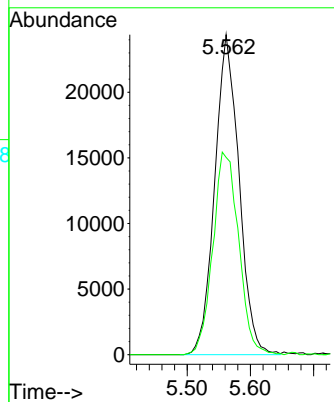


#1
 Pentafluorobenzene
 Concen: 50.000 ug/l
 RT: 5.562 min Scan# 734
 Delta R.T. -0.000 min
 Lab File: VX022434.D
 Acq: 05 Jun 2021 00:04

Instrument :
 MSVOA_X
 ClientSampled :

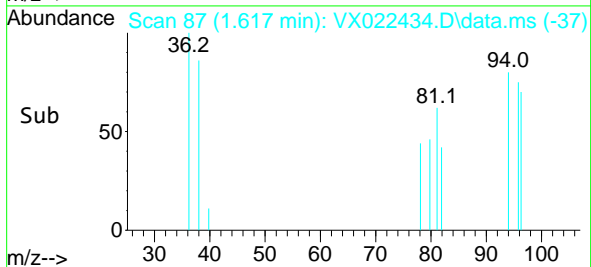
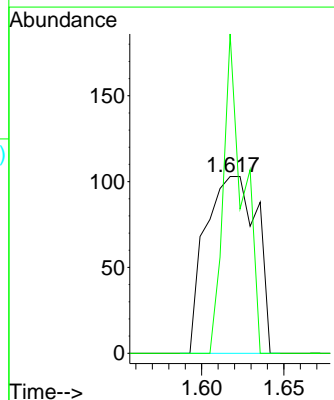
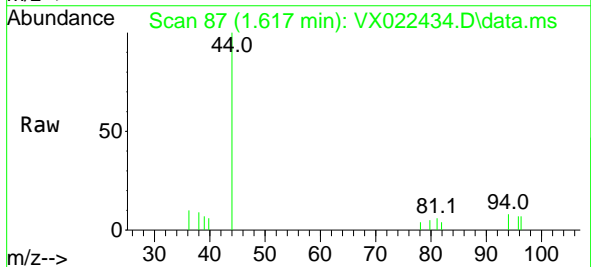


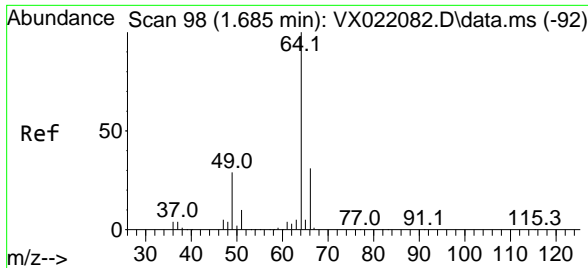
Tgt Ion:168 Resp: 64972
 Ion Ratio Lower Upper
 168 100
 99 61.7 45.8 68.6



#5
 Bromomethane
 Concen: 0.424 ug/l
 RT: 1.617 min Scan# 87
 Delta R.T. 0.005 min
 Lab File: VX022434.D
 Acq: 05 Jun 2021 00:04

Tgt Ion: 94 Resp: 223
 Ion Ratio Lower Upper
 94 100
 96 180.6 76.4 114.6#

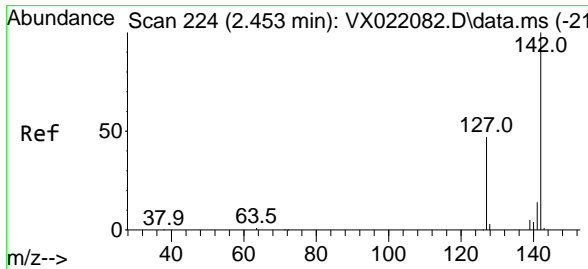
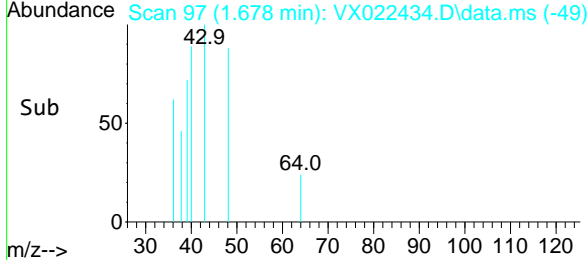
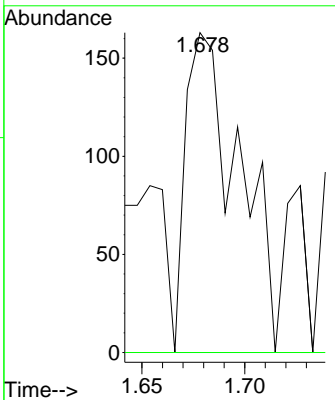
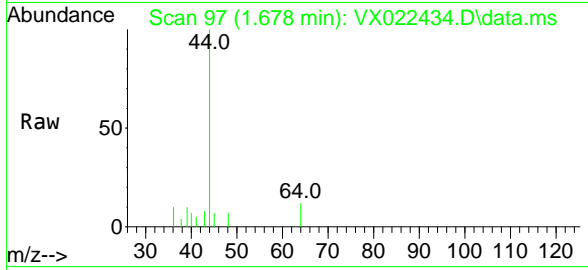




#6
 Chloroethane
 Concen: 0.548 ug/l
 RT: 1.678 min Scan# 97
 Delta R.T. -0.007 min
 Lab File: VX022434.D
 Acq: 05 Jun 2021 00:04

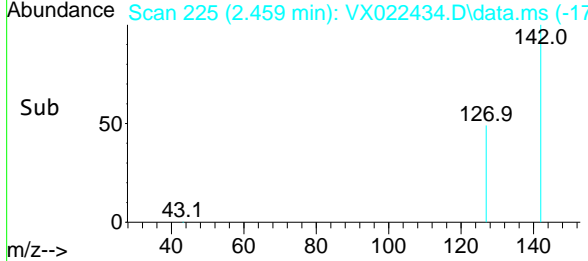
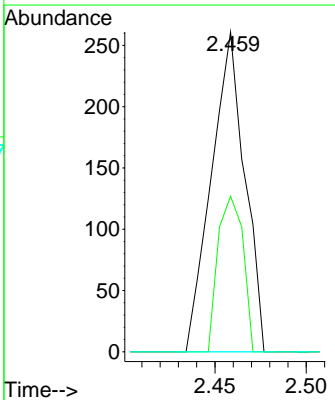
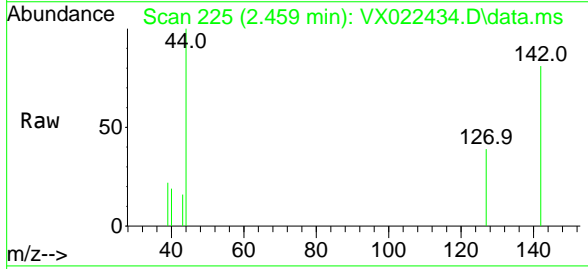
Instrument :
 MSVOA_X
 ClientSampled :

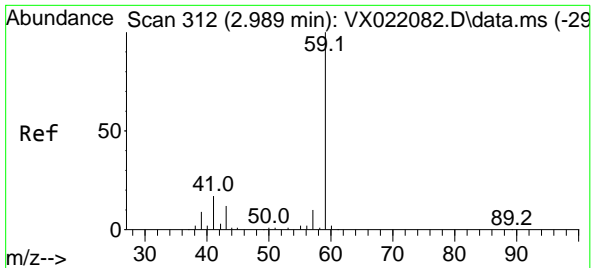
Tgt Ion: 64 Resp: 294
 Ion Ratio Lower Upper
 64 100
 66 0.0 25.4 38.0#



#10
 Methyl Iodide
 Concen: 0.399 ug/l
 RT: 2.459 min Scan# 225
 Delta R.T. 0.006 min
 Lab File: VX022434.D
 Acq: 05 Jun 2021 00:04

Tgt Ion:142 Resp: 330
 Ion Ratio Lower Upper
 142 100
 127 36.7 33.3 49.9
 141 0.0 11.4 17.0#

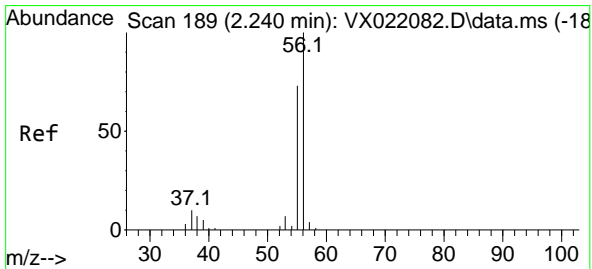
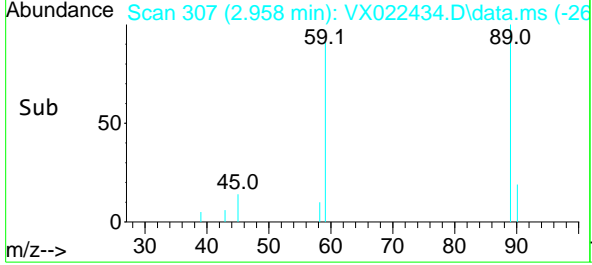
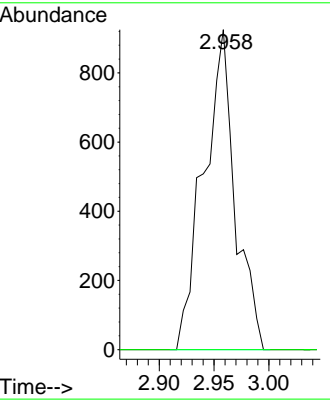
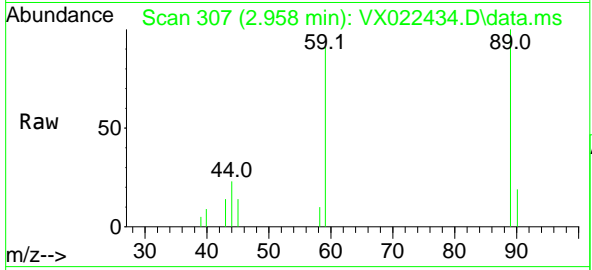




#11
 Tert butyl alcohol
 Concen: 8.040 ug/l
 RT: 2.958 min Scan# 307
 Delta R.T. -0.031 min
 Lab File: VX022434.D
 Acq: 05 Jun 2021 00:04

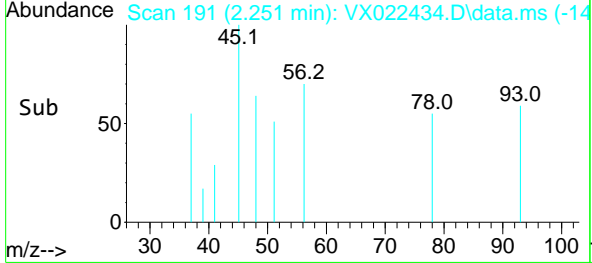
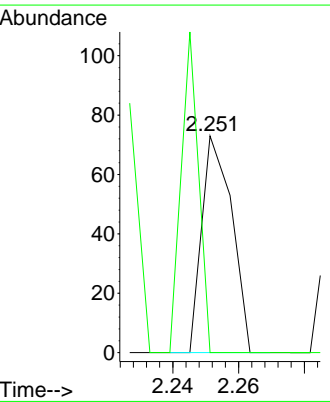
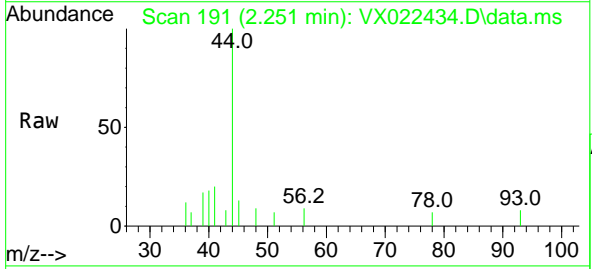
Instrument :
 MSVOA_X
 ClientSampled :

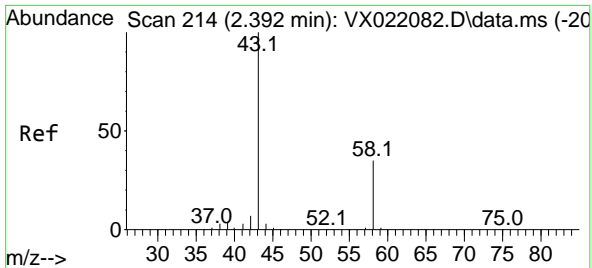
Tgt Ion: 59 Resp: 1843
 Ion Ratio Lower Upper
 59 100
 57 0.0 7.8 11.8#



#13
 Acrolein
 Concen: 0.303 ug/l
 RT: 2.251 min Scan# 191
 Delta R.T. 0.011 min
 Lab File: VX022434.D
 Acq: 05 Jun 2021 00:04

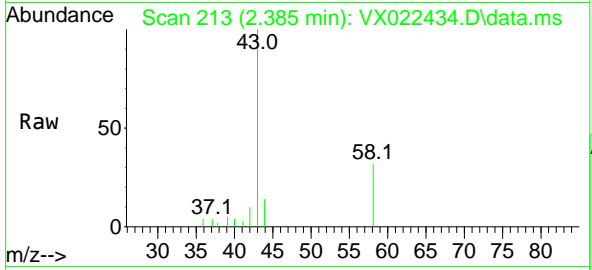
Tgt Ion: 56 Resp: 46
 Ion Ratio Lower Upper
 56 100
 55 84.8 56.4 84.6#



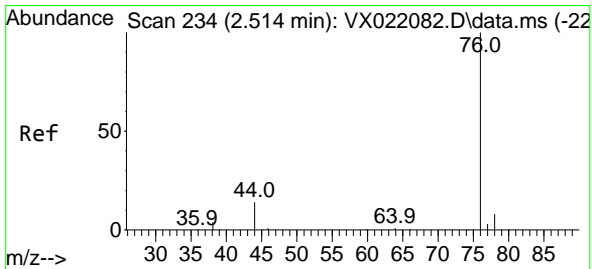
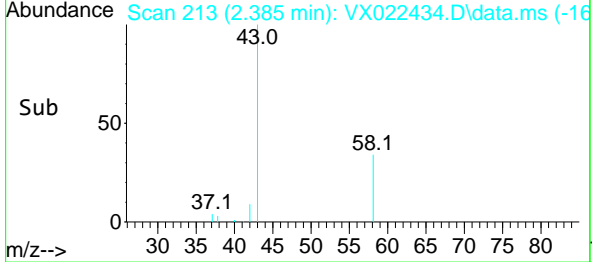
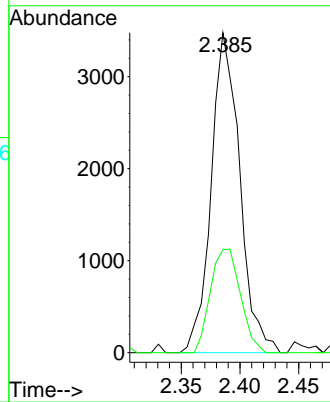


#16
 Acetone
 Concen: 13.508 ug/l
 RT: 2.385 min Scan# 213
 Delta R.T. -0.007 min
 Lab File: VX022434.D
 Acq: 05 Jun 2021 00:04

Instrument :
 MSVOA_X
 ClientSampled :

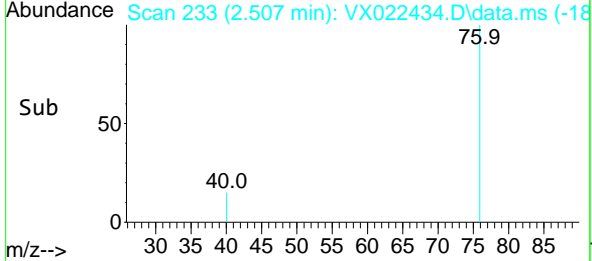
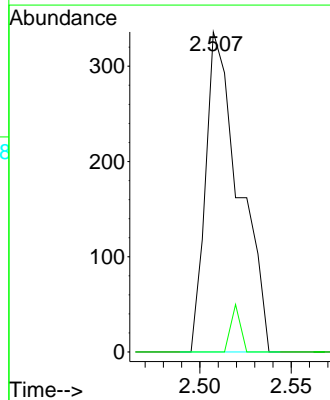
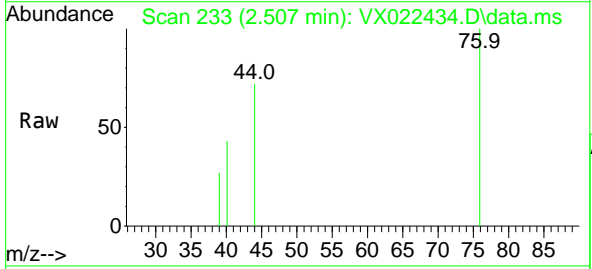


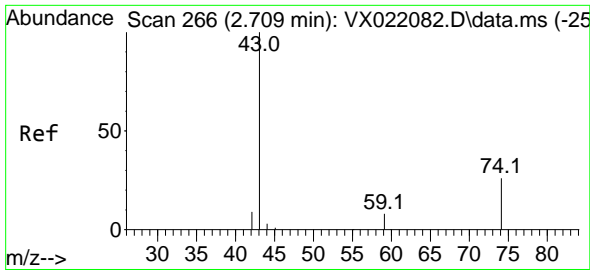
Tgt Ion: 43 Resp: 5895
 Ion Ratio Lower Upper
 43 100
 58 32.2 27.8 41.8



#17
 Carbon Disulfide
 Concen: 0.220 ug/l
 RT: 2.507 min Scan# 233
 Delta R.T. -0.007 min
 Lab File: VX022434.D
 Acq: 05 Jun 2021 00:04

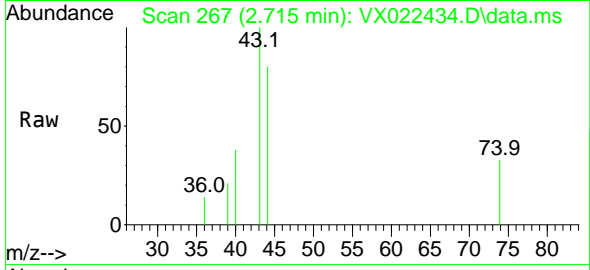
Tgt Ion: 76 Resp: 429
 Ion Ratio Lower Upper
 76 100
 78 0.0 7.2 10.8#



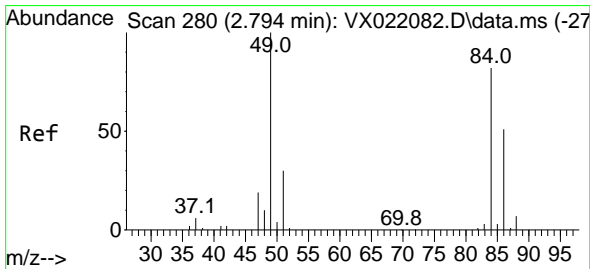
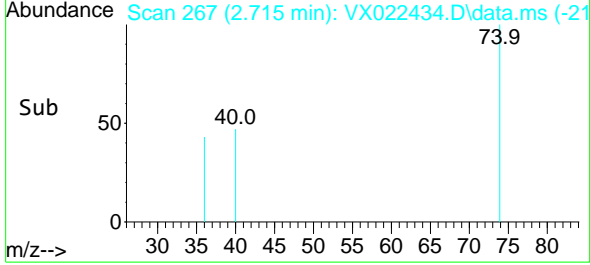
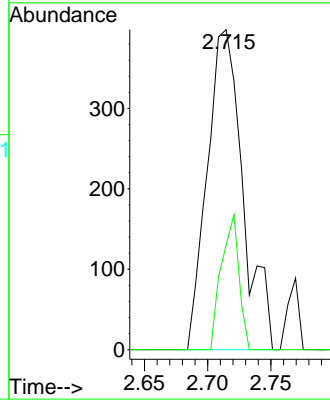


#18
 Methyl Acetate
 Concen: 0.674 ug/l
 RT: 2.715 min Scan# 267
 Delta R.T. 0.006 min
 Lab File: VX022434.D
 Acq: 05 Jun 2021 00:04

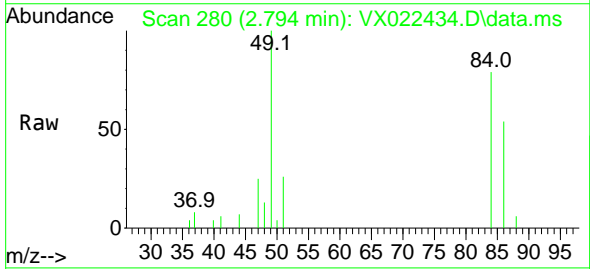
Instrument :
 MSVOA_X
 ClientSampled :



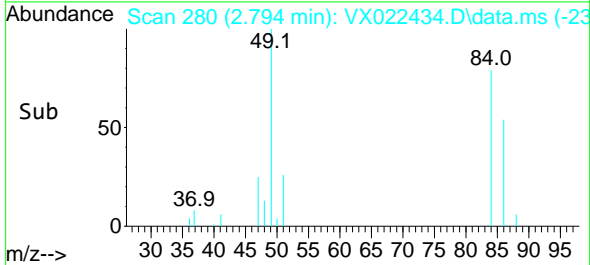
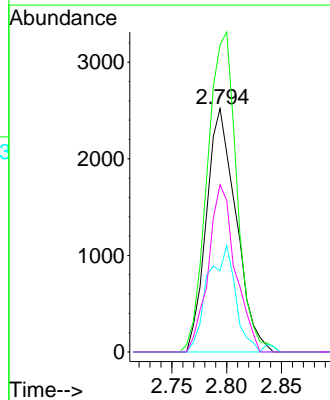
Tgt Ion: 43 Resp: 782
 Ion Ratio Lower Upper
 43 100
 74 20.7 21.9 32.9#

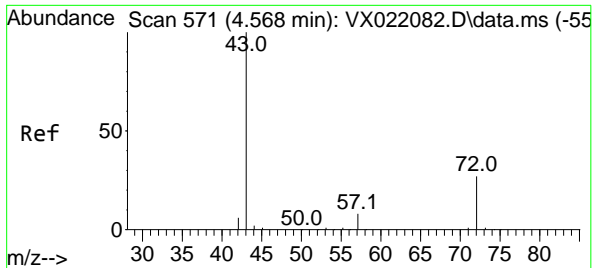


#20
 Methylene Chloride
 Concen: 4.899 ug/l
 RT: 2.794 min Scan# 280
 Delta R.T. -0.000 min
 Lab File: VX022434.D
 Acq: 05 Jun 2021 00:04



Tgt Ion: 84 Resp: 4747
 Ion Ratio Lower Upper
 84 100
 49 126.3 88.6 132.8
 51 33.4 27.0 40.6
 86 68.7 50.3 75.5

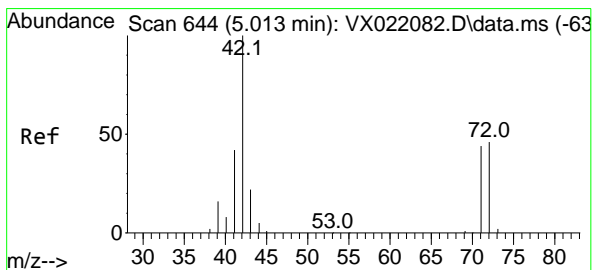
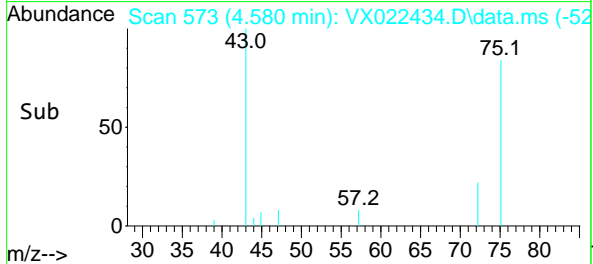
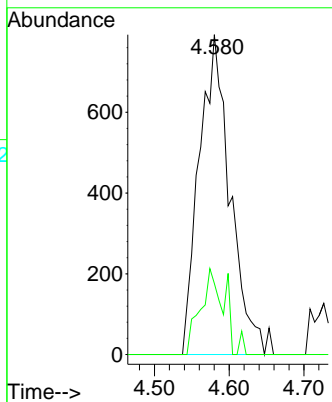
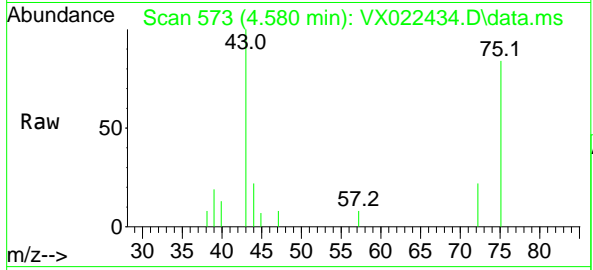




#25
 2-Butanone
 Concen: 3.248 ug/l
 RT: 4.580 min Scan# 573
 Delta R.T. 0.012 min
 Lab File: VX022434.D
 Acq: 05 Jun 2021 00:04

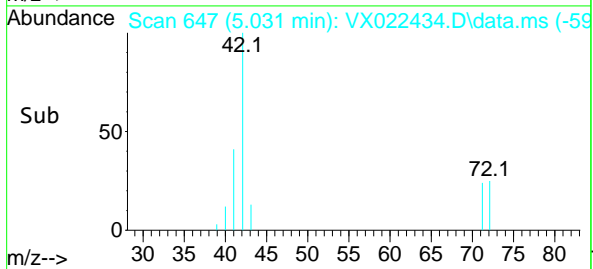
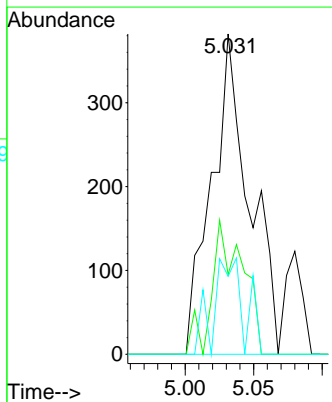
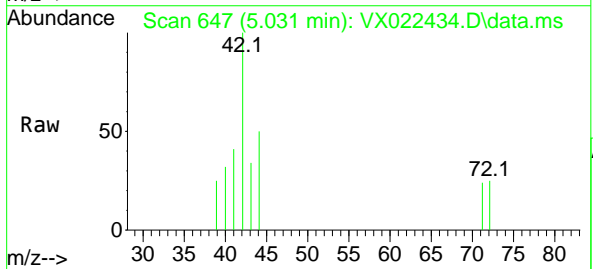
Instrument :
 MSVOA_X
 ClientSampled :

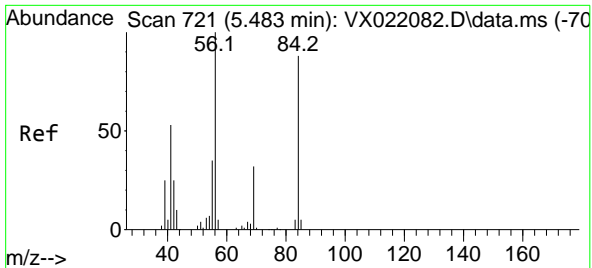
Tgt Ion: 43 Resp: 2293
 Ion Ratio Lower Upper
 43 100
 72 22.2 23.7 35.5#



#29
 Tetrahydrofuran
 Concen: 1.744 ug/l
 RT: 5.031 min Scan# 647
 Delta R.T. 0.018 min
 Lab File: VX022434.D
 Acq: 05 Jun 2021 00:04

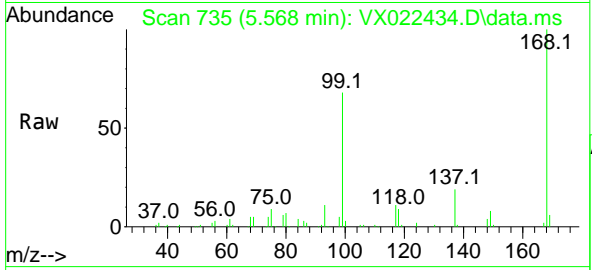
Tgt Ion: 42 Resp: 733
 Ion Ratio Lower Upper
 42 100
 72 34.5 41.7 62.5#
 71 24.6 38.4 57.6#





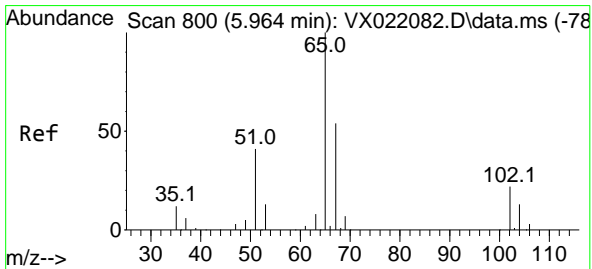
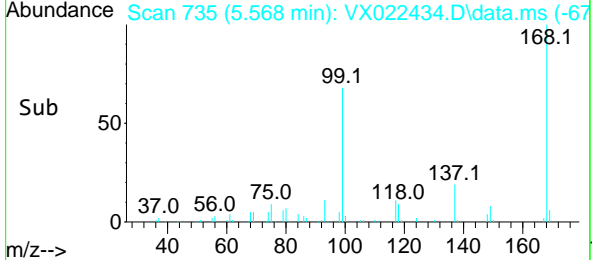
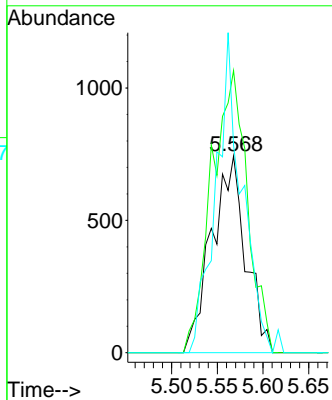
#31
 Cyclohexane
 Concen: 1.536 ug/l
 RT: 5.568 min Scan# 735
 Delta R.T. 0.085 min
 Lab File: VX022434.D
 Acq: 05 Jun 2021 00:04

Instrument :
 MSVOA_X
 ClientSampled :

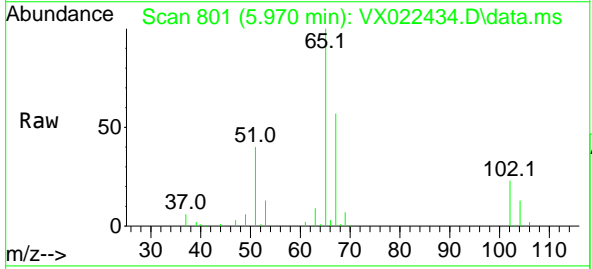


Tgt Ion: 56 Resp: 1934

Ion	Ratio	Lower	Upper
56	100		
69	143.5	25.3	37.9#
84	105.7	71.4	107.0

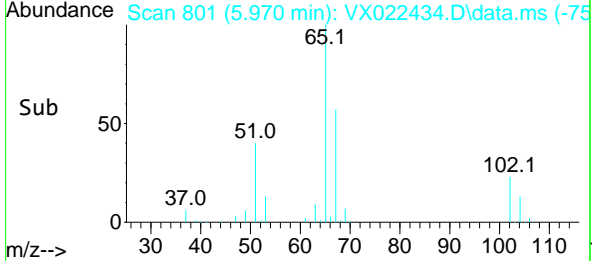
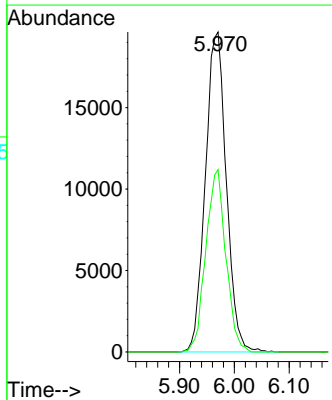


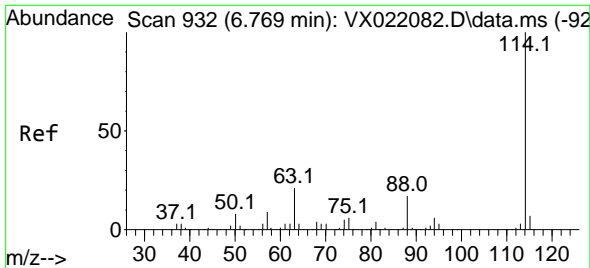
#33
 1,2-Dichloroethane-d4
 Concen: 51.955 ug/l
 RT: 5.970 min Scan# 801
 Delta R.T. 0.006 min
 Lab File: VX022434.D
 Acq: 05 Jun 2021 00:04



Tgt Ion: 65 Resp: 52071

Ion	Ratio	Lower	Upper
65	100		
67	54.5	0.0	105.4

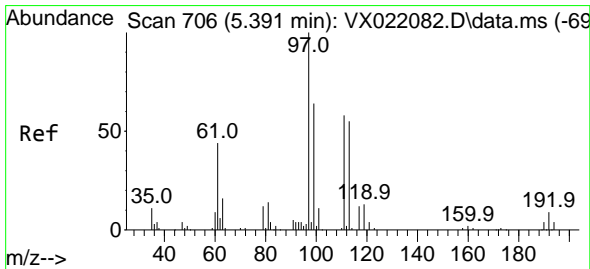
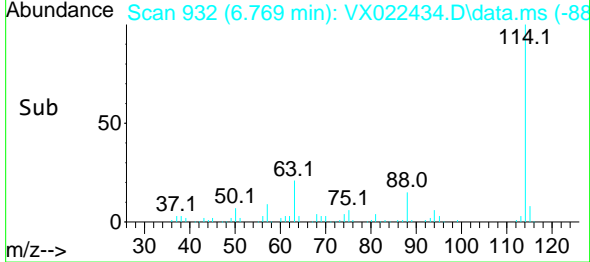
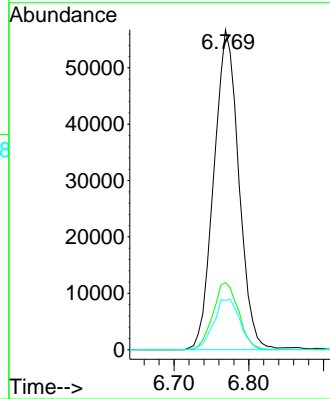
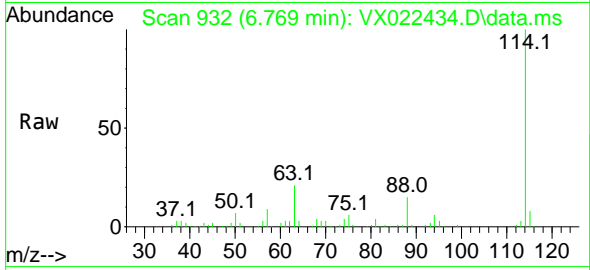




#34
 1,4-Difluorobenzene
 Concen: 50.000 ug/l
 RT: 6.769 min Scan# 932
 Delta R.T. -0.000 min
 Lab File: VX022434.D
 Acq: 05 Jun 2021 00:04

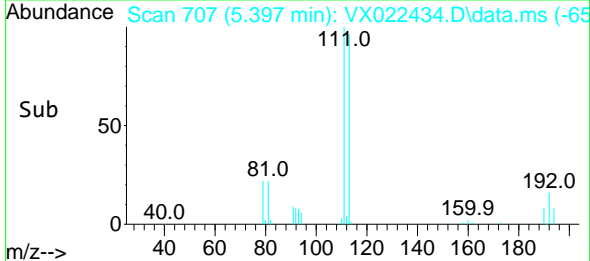
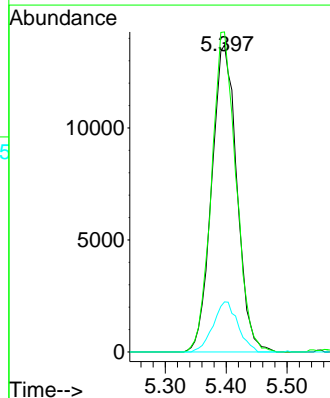
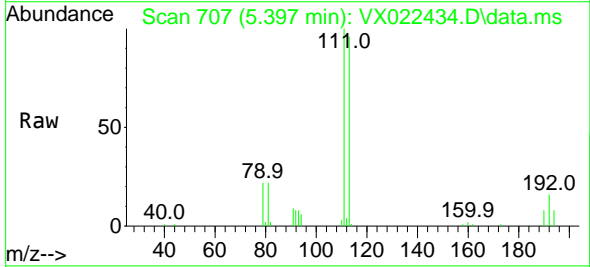
Instrument :
 MSVOA_X
 ClientSampled :

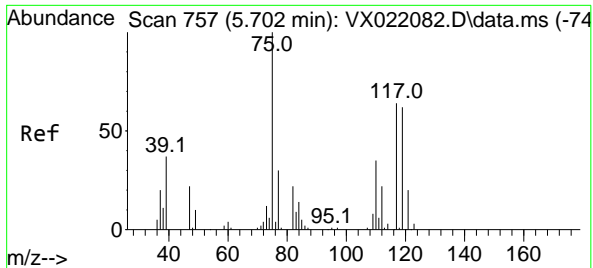
Tgt Ion	Resp	Lower	Upper
114	131223		
63	20.9	0.0	40.8
88	15.5	0.0	32.8



#35
 Dibromofluoromethane
 Concen: 47.310 ug/l
 RT: 5.397 min Scan# 707
 Delta R.T. 0.006 min
 Lab File: VX022434.D
 Acq: 05 Jun 2021 00:04

Tgt Ion	Resp	Lower	Upper
113	39369		
111	101.5	81.9	122.9
192	16.0	16.7	25.1#

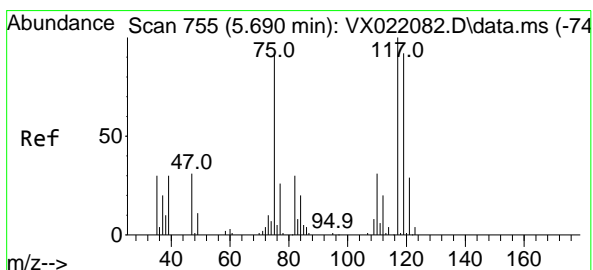
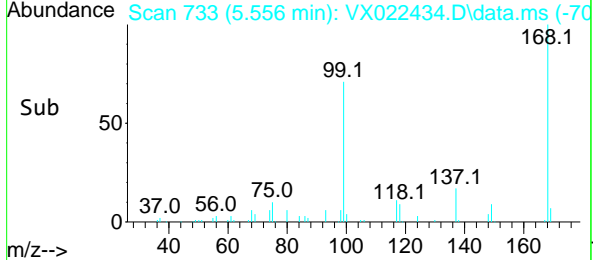
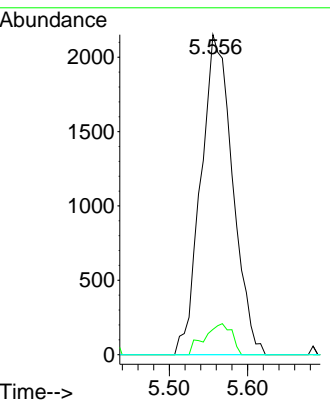
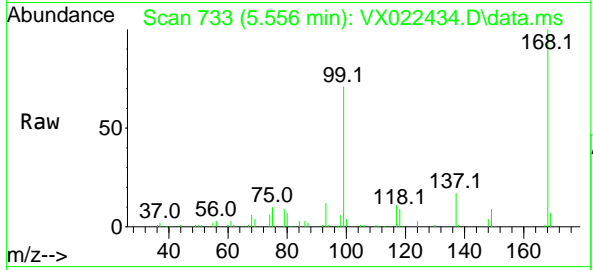




#36
 1,1-Dichloropropene
 Concen: 4.988 ug/l
 RT: 5.556 min Scan# 733
 Delta R.T. -0.146 min
 Lab File: VX022434.D
 Acq: 05 Jun 2021 00:04

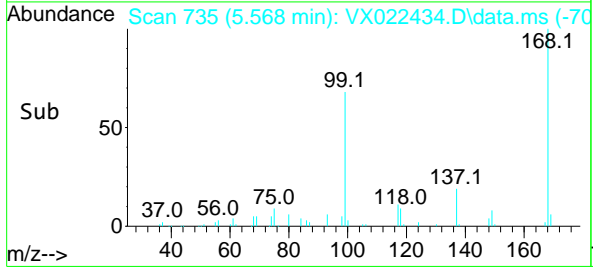
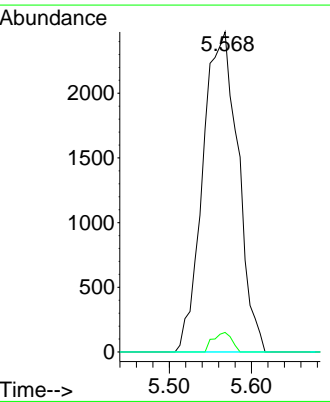
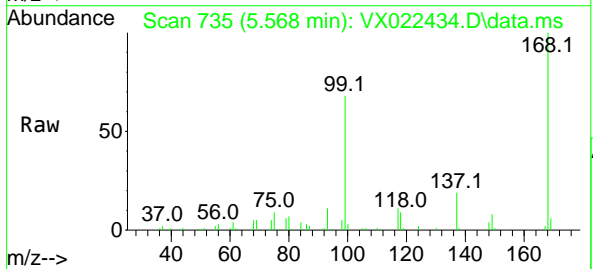
Instrument :
 MSVOA_X
 ClientSampled :

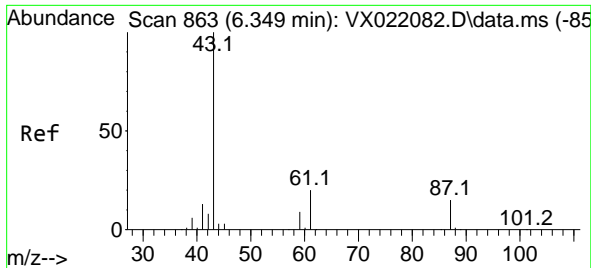
Tgt Ion	Resp	Lower	Upper
75	100		
110	8.3	18.1	54.4#
77	0.0	25.3	37.9#



#38
 Carbon Tetrachloride
 Concen: 6.206 ug/l
 RT: 5.568 min Scan# 735
 Delta R.T. -0.122 min
 Lab File: VX022434.D
 Acq: 05 Jun 2021 00:04

Tgt Ion	Resp	Lower	Upper
117	100		
119	6.1	76.2	114.2#
121	0.0	24.8	37.2#

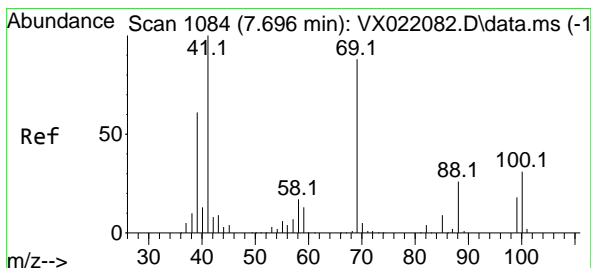
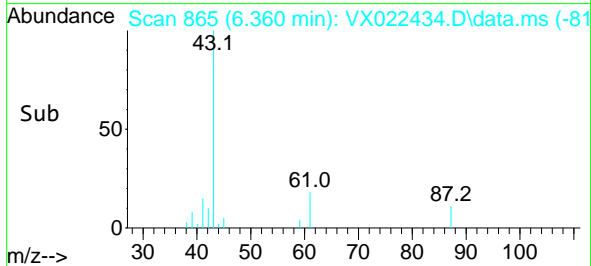
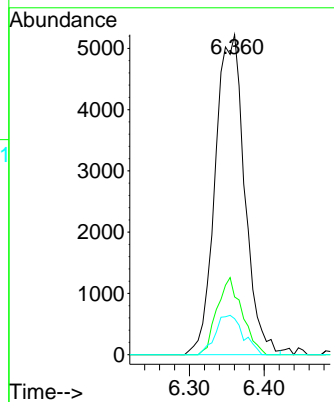
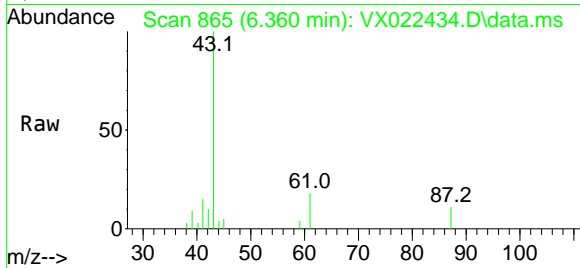




#43
 Isopropyl Acetate
 Concen: 5.868 ug/l
 RT: 6.360 min Scan# 865
 Delta R.T. 0.011 min
 Lab File: VX022434.D
 Acq: 05 Jun 2021 00:04

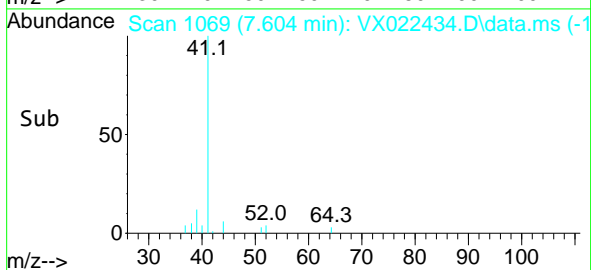
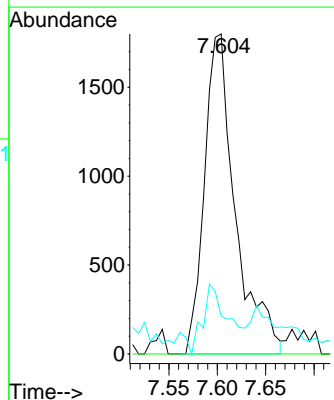
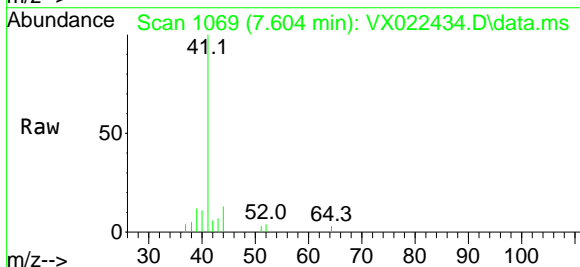
Instrument :
 MSVOA_X
 ClientSampled :

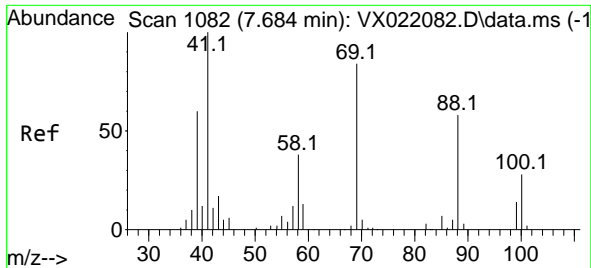
Tgt Ion	Resp	Lower	Upper
43	14277		
61	20.7	18.2	27.4
87	11.6	12.5	18.7#



#48
 Methyl methacrylate
 Concen: 3.572 ug/l
 RT: 7.604 min Scan# 1069
 Delta R.T. -0.092 min
 Lab File: VX022434.D
 Acq: 05 Jun 2021 00:04

Tgt Ion	Resp	Lower	Upper
41	4005		
69	0.0	76.0	114.0#
39	0.0	44.6	67.0#

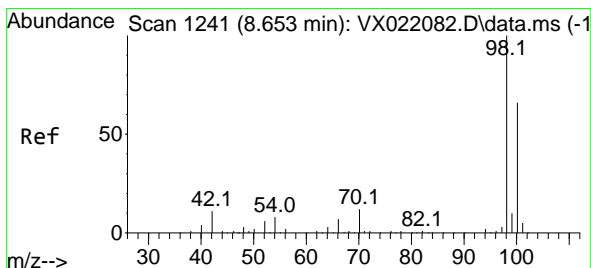
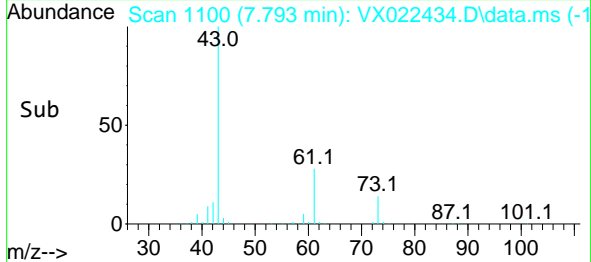
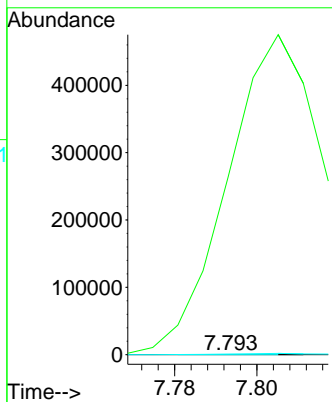
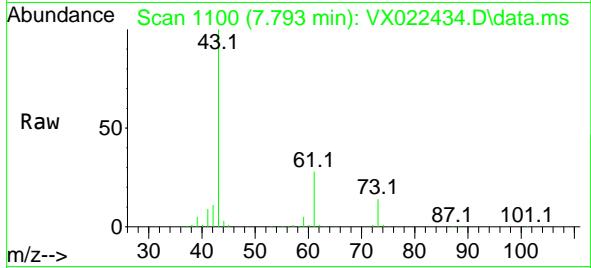




#49
 1,4-Dioxane
 Concen: 3.023 ug/l
 RT: 7.793 min Scan# 1100
 Delta R.T. 0.109 min
 Lab File: VX022434.D
 Acq: 05 Jun 2021 00:04

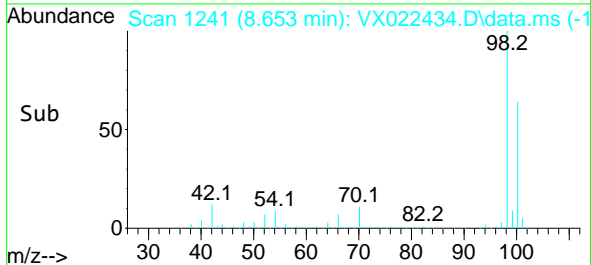
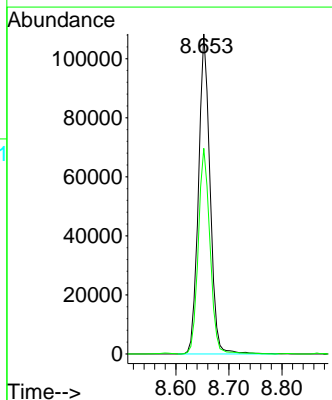
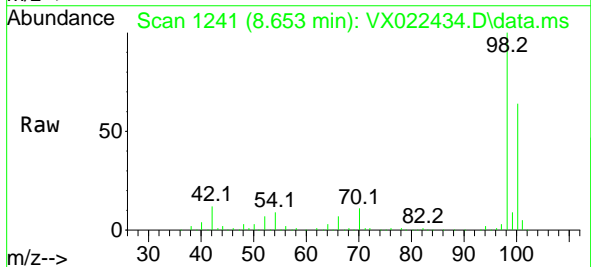
Instrument :
 MSVOA_X
 ClientSampled :

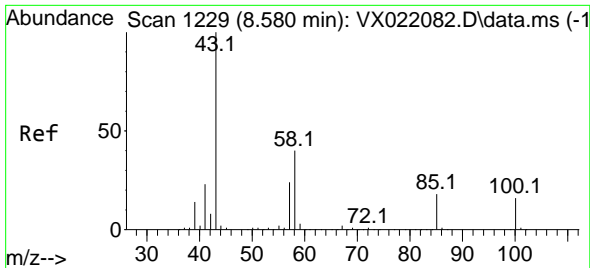
Tgt Ion	Resp	Lower	Upper
88	100		
43	0.0	23.2	34.8#
58	0.0	55.0	82.4#



#50
 Toluene-d8
 Concen: 51.149 ug/l
 RT: 8.653 min Scan# 1241
 Delta R.T. -0.000 min
 Lab File: VX022434.D
 Acq: 05 Jun 2021 00:04

Tgt Ion	Resp	Lower	Upper
98	100		
100	65.3	51.9	77.9

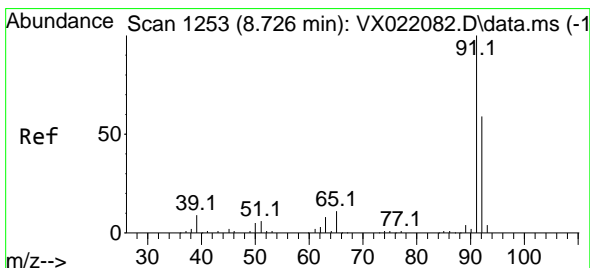
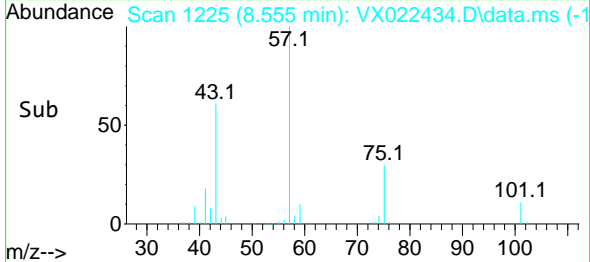
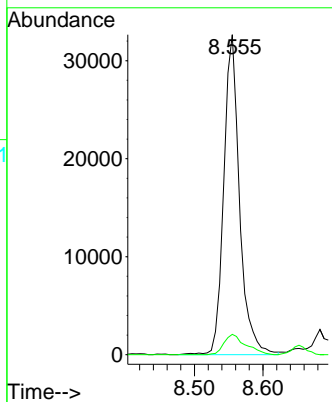
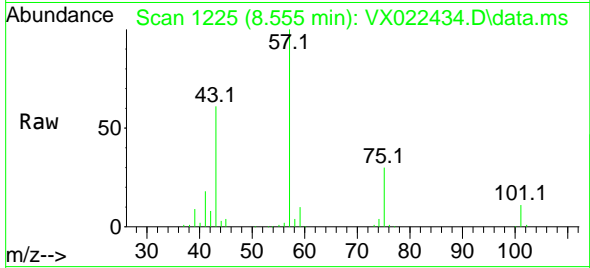




#51
 4-Methyl-2-Pentanone
 Concen: 35.723 ug/l
 RT: 8.555 min Scan# 1225
 Delta R.T. -0.025 min
 Lab File: VX022434.D
 Acq: 05 Jun 2021 00:04

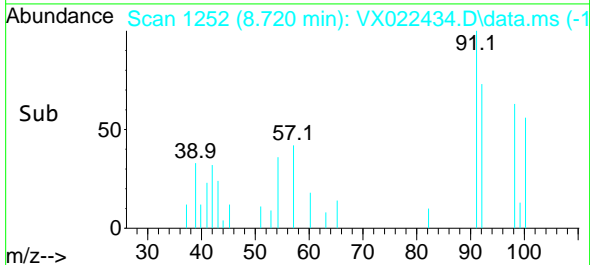
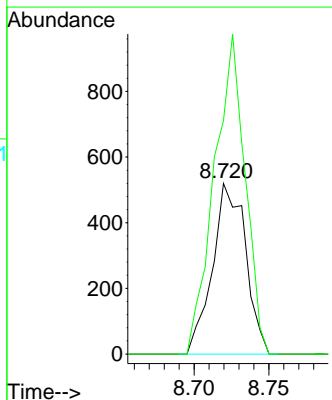
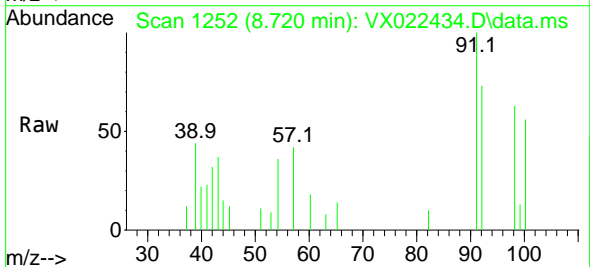
Instrument :
 MSVOA_X
 ClientSampled :

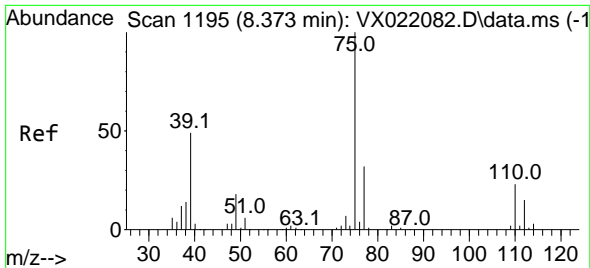
Tgt Ion: 43 Resp: 52063
 Ion Ratio Lower Upper
 43 100
 58 8.8 35.4 53.0#



#52
 Toluene
 Concen: 0.338 ug/l
 RT: 8.720 min Scan# 1252
 Delta R.T. -0.006 min
 Lab File: VX022434.D
 Acq: 05 Jun 2021 00:04

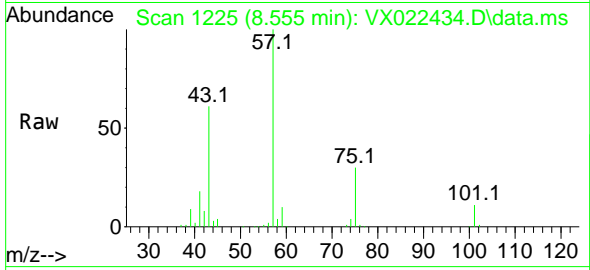
Tgt Ion: 92 Resp: 799
 Ion Ratio Lower Upper
 92 100
 91 174.6 137.1 205.7





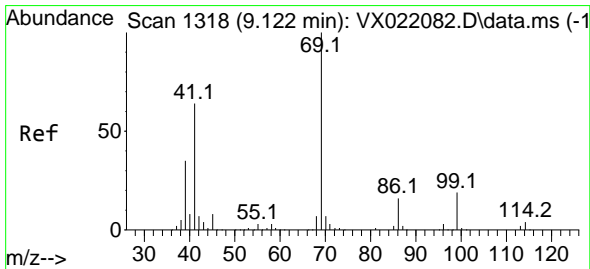
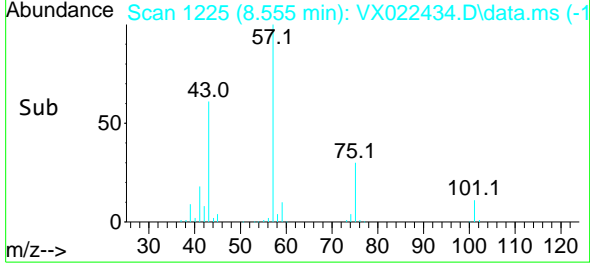
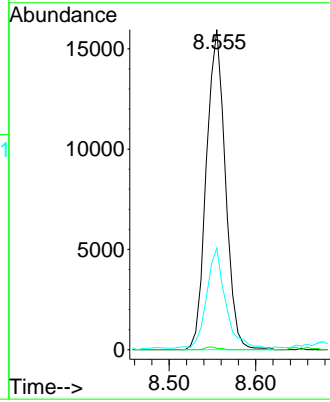
#54
 cis-1,3-Dichloropropene
 Concen: 15.161 ug/l
 RT: 8.555 min Scan# 1225
 Delta R.T. 0.182 min
 Lab File: VX022434.D
 Acq: 05 Jun 2021 00:04

Instrument :
 MSVOA_X
 ClientSampled :

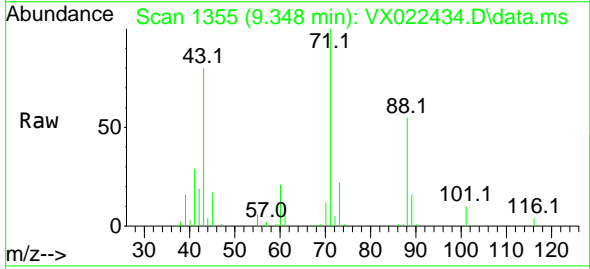


Tgt Ion: 75 Resp: 24326

Ion	Ratio	Lower	Upper
75	100		
77	0.4	25.7	38.5#
39	31.1	35.1	52.7#

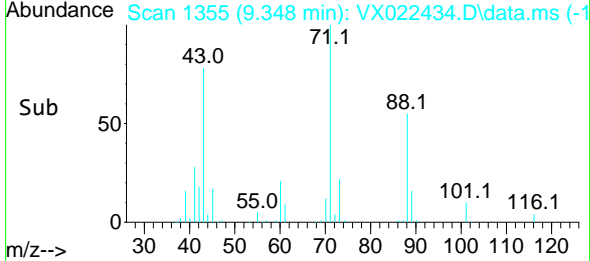
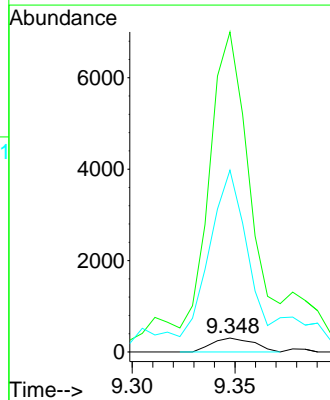


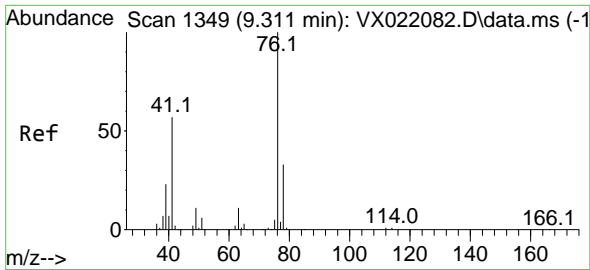
#56
 Ethyl methacrylate
 Concen: 0.278 ug/l
 RT: 9.348 min Scan# 1355
 Delta R.T. 0.226 min
 Lab File: VX022434.D
 Acq: 05 Jun 2021 00:04



Tgt Ion: 69 Resp: 432

Ion	Ratio	Lower	Upper
69	100		
41	2348.1	46.8	70.2#
39	1476.9	24.7	37.1#

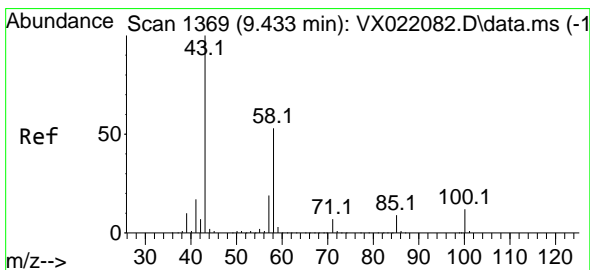
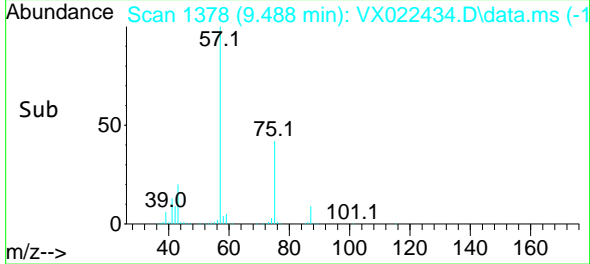
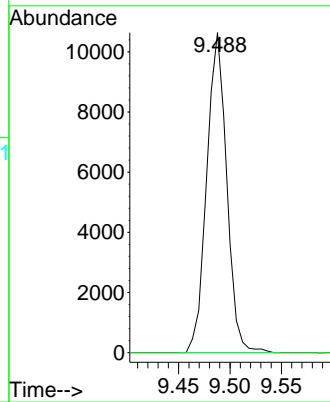
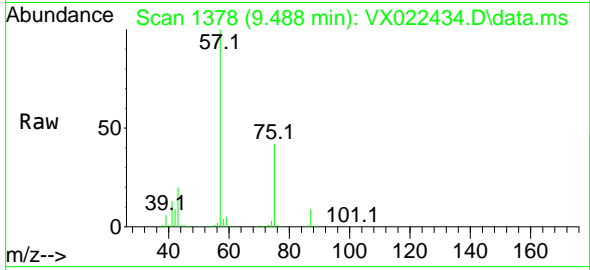




#57
 1,3-Dichloropropane
 Concen: 8.787 ug/l
 RT: 9.488 min Scan# 1378
 Delta R.T. 0.177 min
 Lab File: VX022434.D
 Acq: 05 Jun 2021 00:04

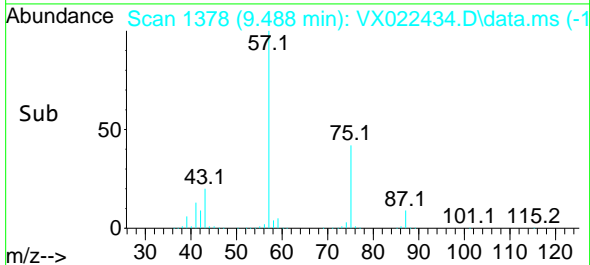
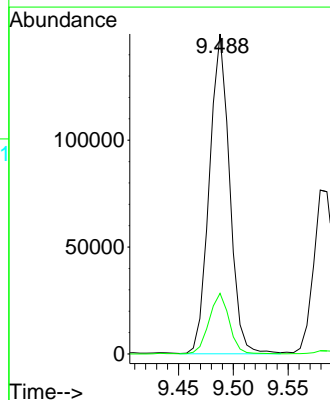
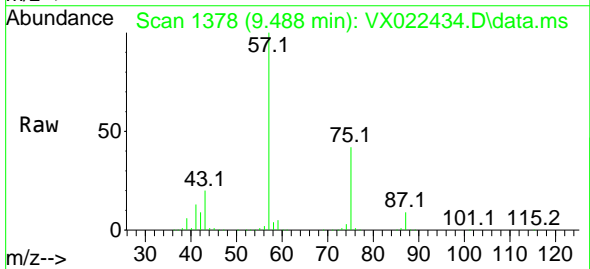
Instrument :
 MSVOA_X
 ClientSampled :

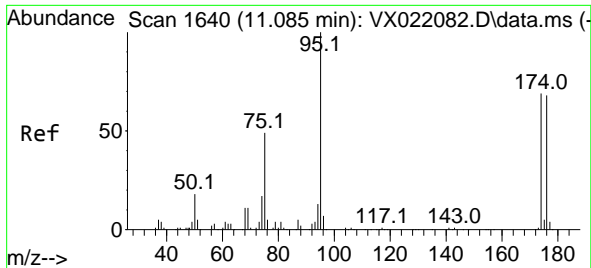
Tgt Ion: 76 Resp: 14400
 Ion Ratio Lower Upper
 76 100
 78 0.0 26.2 39.2#



#59
 2-Hexanone
 Concen: 174.769 ug/l
 RT: 9.488 min Scan# 1378
 Delta R.T. 0.055 min
 Lab File: VX022434.D
 Acq: 05 Jun 2021 00:04

Tgt Ion: 43 Resp: 191566
 Ion Ratio Lower Upper
 43 100
 58 18.9 30.9 92.8#

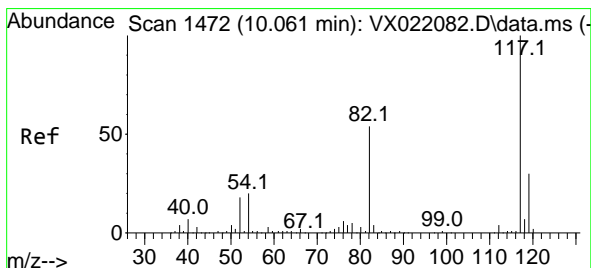
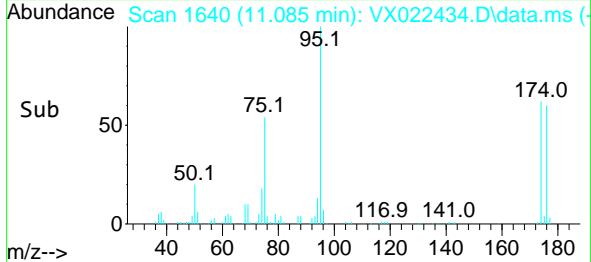
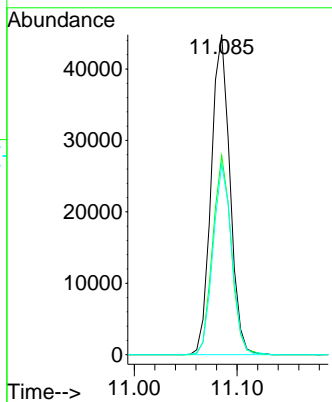
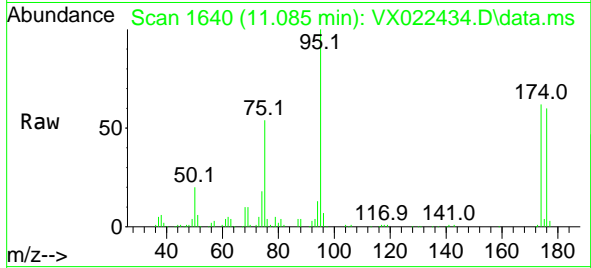




#62
 4-Bromofluorobenzene
 Concen: 47.754 ug/l
 RT: 11.085 min Scan# 1640
 Delta R.T. 0.000 min
 Lab File: VX022434.D
 Acq: 05 Jun 2021 00:04

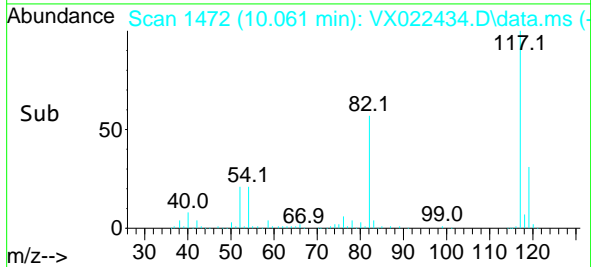
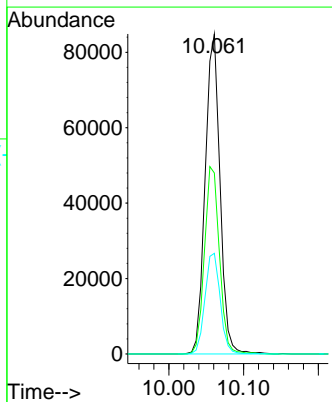
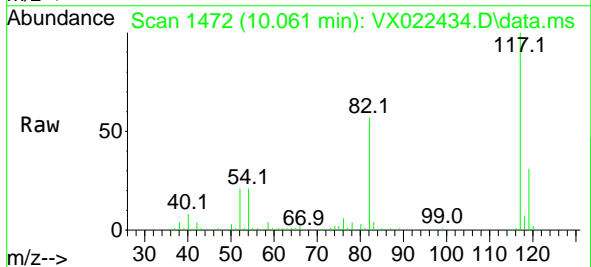
Instrument :
 MSVOA_X
 ClientSampled :

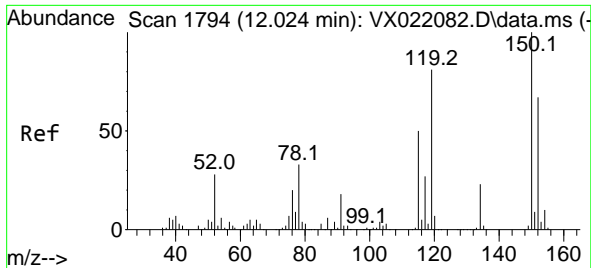
Tgt Ion	Resp	Lower	Upper
95	56580	100	
174	61.5	0.0	154.6
176	59.5	0.0	155.8



#63
 Chlorobenzene-d5
 Concen: 50.000 ug/l
 RT: 10.061 min Scan# 1472
 Delta R.T. -0.000 min
 Lab File: VX022434.D
 Acq: 05 Jun 2021 00:04

Tgt Ion	Resp	Lower	Upper
117	116912	100	
82	56.6	47.4	71.2
119	31.4	26.6	39.8

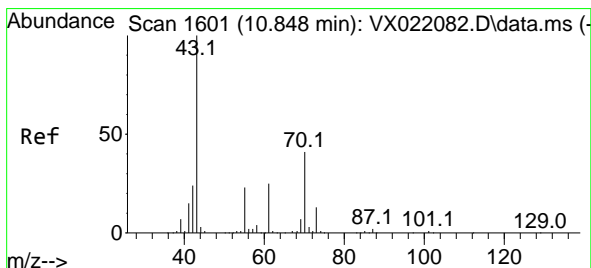
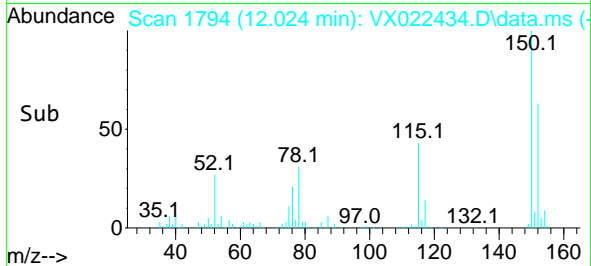
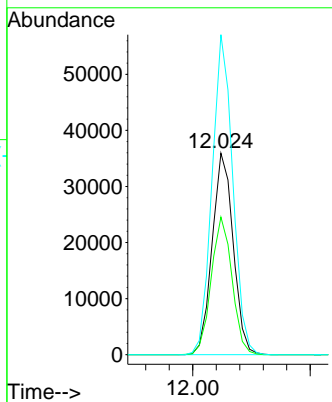
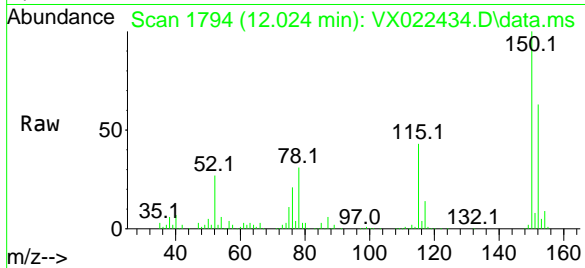




#72
 1,4-Dichlorobenzene-d4
 Concen: 50.000 ug/l
 RT: 12.024 min Scan# 1794
 Delta R.T. -0.000 min
 Lab File: VX022434.D
 Acq: 05 Jun 2021 00:04

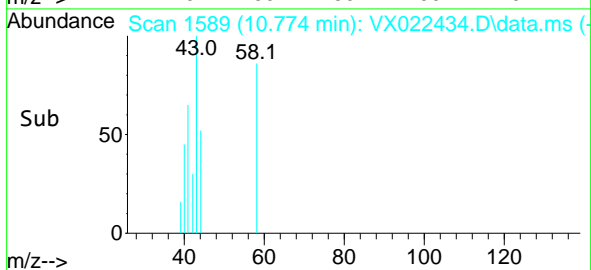
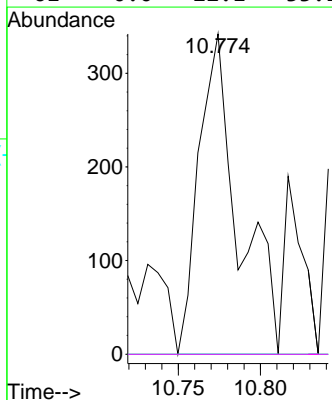
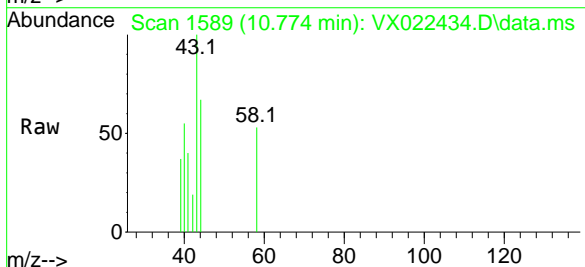
Instrument :
 MSVOA_X
 ClientSampled :

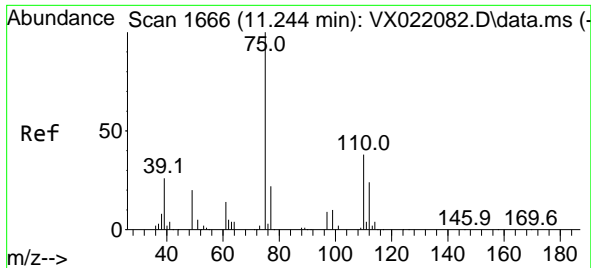
Tgt Ion	Resp	Lower	Upper
152	44785		
100			
115	67.4	41.1	123.3
150	156.1	0.0	349.0



#74
 N-amy1 acetate
 Concen: 0.317 ug/l
 RT: 10.774 min Scan# 1589
 Delta R.T. -0.074 min
 Lab File: VX022434.D
 Acq: 05 Jun 2021 00:04

Tgt Ion	Resp	Lower	Upper
43	571		
100			
70	0.0	39.0	58.6#
55	0.0	21.5	32.3#
61	0.0	22.1	33.1#

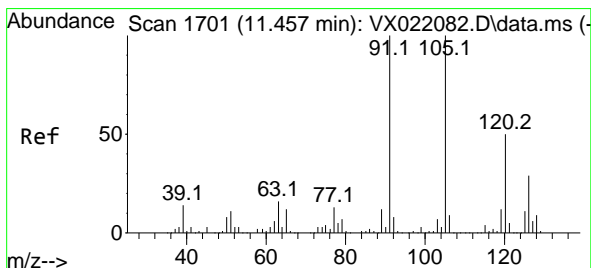
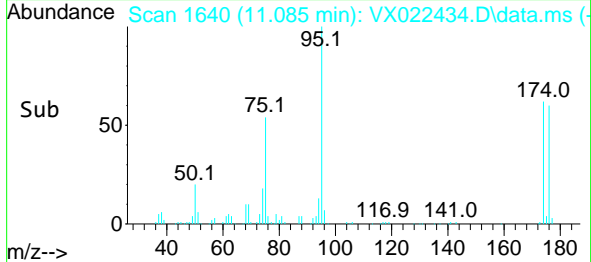
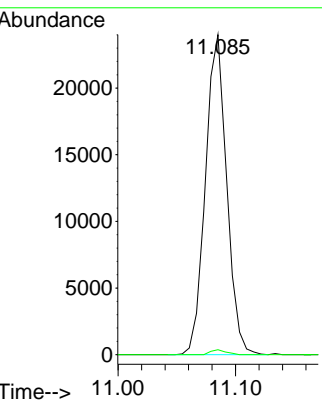
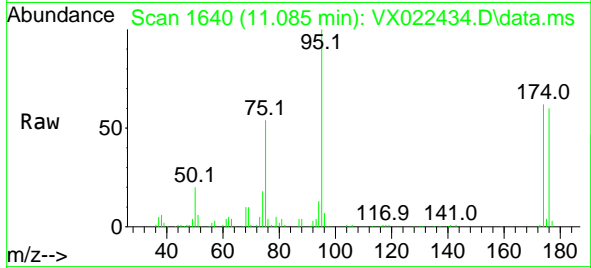




#76
 1,2,3-Trichloropropane
 Concen: 27.357 ug/l
 RT: 11.085 min Scan# 1640
 Delta R.T. -0.159 min
 Lab File: VX022434.D
 Acq: 05 Jun 2021 00:04

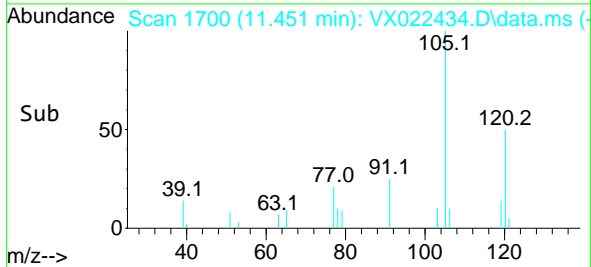
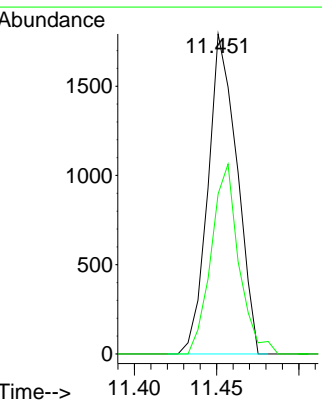
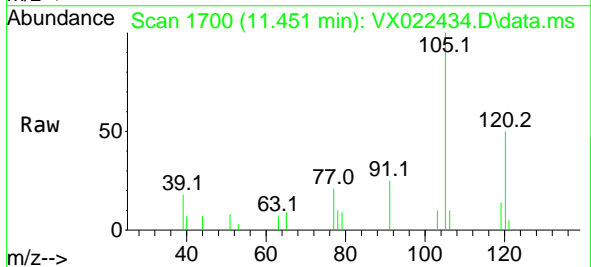
Instrument :
 MSVOA_X
 ClientSampled :

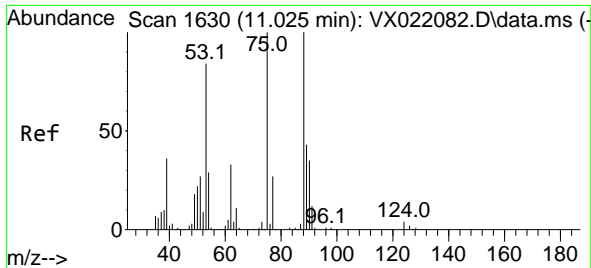
Tgt Ion: 75 Resp: 30226
 Ion Ratio Lower Upper
 75 100
 77 1.1 19.1 57.5#



#80
 1,3,5-Trimethylbenzene
 Concen: 0.699 ug/l
 RT: 11.451 min Scan# 1700
 Delta R.T. -0.006 min
 Lab File: VX022434.D
 Acq: 05 Jun 2021 00:04

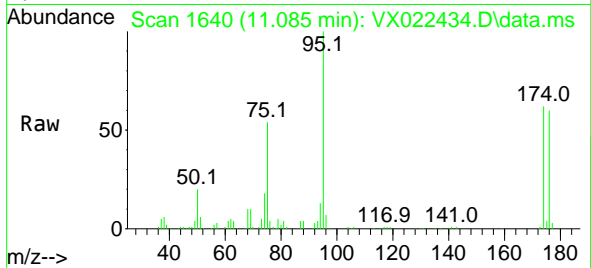
Tgt Ion:105 Resp: 2197
 Ion Ratio Lower Upper
 105 100
 120 56.5 23.8 71.5





#81
 trans-1,4-Dichloro-2-butene
 Concen: 64.820 ug/l
 RT: 11.085 min Scan# 1640
 Delta R.T. 0.060 min
 Lab File: VX022434.D
 Acq: 05 Jun 2021 00:04

Instrument :
 MSVOA_X
 ClientSampled :



Tgt Ion: 75 Resp: 30226
 Ion Ratio Lower Upper
 75 100
 53 0.0 74.5 111.7#
 89 0.0 37.9 56.9#

